

# Development of the Hanford Site Chronic Beryllium Disease Prevention Program

Prepared for the U.S. Department of Energy  
Assistant Secretary for Environmental Management

Contractor for the U.S. Department of Energy  
under Contract DE-AC06-08RL14788



**CH2MHILL**  
Plateau Remediation Company

P.O. Box 1600  
Richland, Washington 99352

**Approved for Public Release;  
Further Dissemination Unlimited**

# Development of the Hanford Site Chronic Beryllium Disease Prevention Program

S. A. Seydel  
CH2M HILL Plateau Remediation Company

Date Published  
July 2009

To Be Presented at  
Integrated Safety Management Summit

Department of Energy  
Knoxville, TN

August 24-27, 2009

Prepared for the U.S. Department of Energy  
Assistant Secretary for Environmental Management

Contractor for the U.S. Department of Energy  
under Contract DE-AC06-08RL14788



P.O. Box 1600  
Richland, Washington

## Copyright License

By acceptance of this article, the publisher and/or recipient acknowledges the U.S. Government's right to retain a nonexclusive, royalty-free license in and to any copyright covering this paper.

  
Release Approval 07/30/2009  
Date

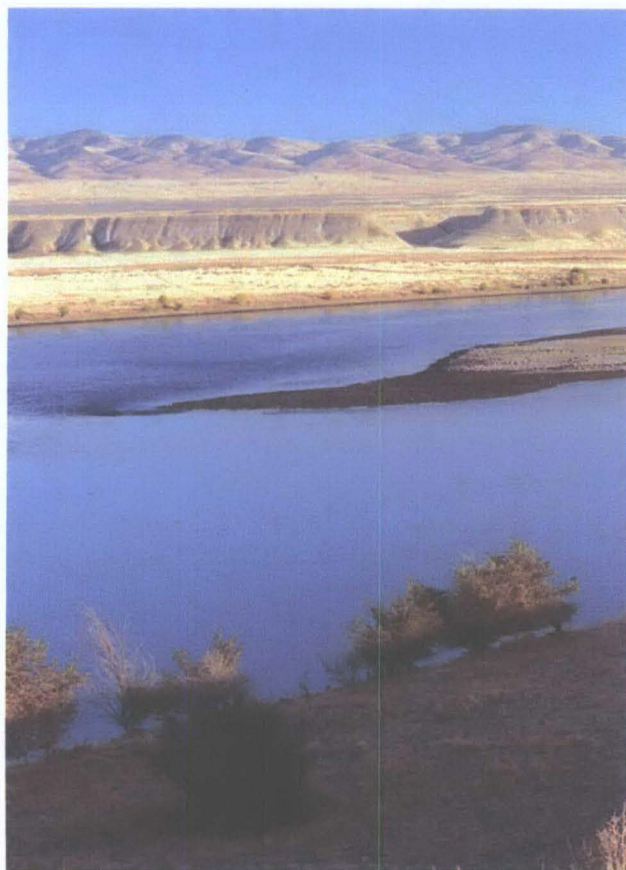
**Approved for Public Release;  
Further Dissemination Unlimited**

**LEGAL DISCLAIMER**

This report was prepared as an account of work sponsored by an agency of the United States Government. Neither the United States Government nor any agency thereof, nor any of their employees, nor any of their contractors, subcontractors or their employees, makes any warranty, express or implied, or assumes any legal liability or responsibility for the accuracy, completeness, or any third party's use or the results of such use of any information, apparatus, product, or process disclosed, or represents that its use would not infringe privately owned rights. Reference herein to any specific commercial product, process, or service by trade name, trademark, manufacturer, or otherwise, does not necessarily constitute or imply its endorsement, recommendation, or favoring by the United States Government or any agency thereof or its contractors or subcontractors. The views and opinions of authors expressed herein do not necessarily state or reflect those of the United States Government or any agency thereof.

This report has been reproduced from the best available copy.  
Available in paper copy.

Printed in the United States of America



# Development of the Hanford Site Chronic Beryllium Disease Prevention Program

Integrated Safety Management  
Summit

Knoxville TN

August 24-27, 2009

Presented by: Scott Seydel, CIH

# Biography

- **Scott Seydel is an Industrial Hygienist in the CH2M HILL Plateau Remediation Company Worker Protection Program. He was a member of the development team for the Hanford Site Chronic Beryllium Disease Prevention Program (CBDPP) and is currently the chair of the Hanford Site CBDPP Committee. Prior to his current job, Scott was the manager of Fluor Hanford's Industrial Hygiene and Chemical Management programs. Scott is a Certified Industrial Hygienist and is a professional member of the American Society of Safety Engineers. Scott has 20 years of environmental, health, and safety experience in a variety of industries, including environmental remediation, semiconductor fabrication, and aircraft manufacturing.**

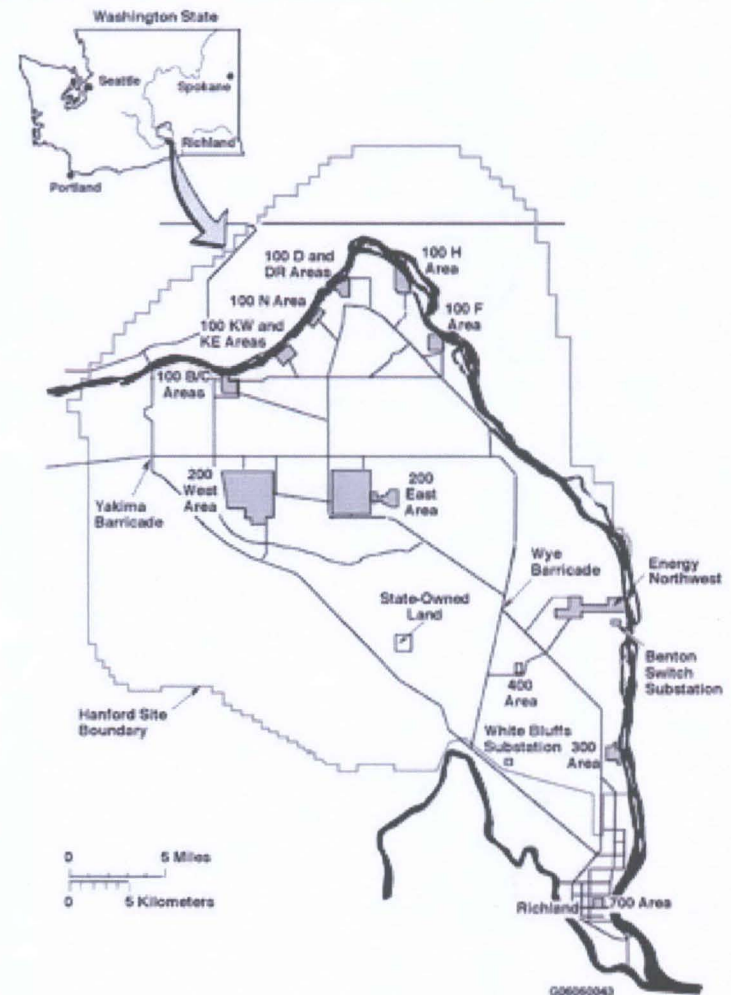


# 10 CFR 850 Overview

- Requires contractors to develop a Chronic Beryllium Disease Prevention Program (CBDPP)
- Contractor CBDPP's must be approved by DOE Field Office
- Regulation is performance based
- Threshold of “potential” exposure
- Meeting the expectations of “ensure”

# Beryllium at Hanford

- Limited beryllium mission activities
- Beryllium legacy contamination
  - Fuel production in 300 Area
  - Rocky Flats ash/oxide
  - Beryllium alloy components
- Distributed command structure
  - Three different DOE field offices
  - Currently eight “prime” contractors



# Purpose of Site-Wide Program

- **10 CFR 850 is a performance based standard**
  - Differences in contractor approaches
- **Mobility of the Hanford workforce**
- **Employee concerns**
  - Level of trust
  - Number of affected workers
  - Inability to determine exposure locations



# Original Contractor Participants

- **Fluor Hanford – Project Hanford Management Contract**
- **Washington Closure Hanford – River Corridor Contract**
- **CH2M HILL Hanford Group – Tank Farm Operations Contract**
- **AdvanceMed Hanford – Site Occupational Medical Contract**
- **Battelle – Pacific Northwest National Laboratory Operations**

# Other Participants

- **Hanford Atomic Metals Trade Council**
- **Beryllium Awareness Group**
- **DOE Richland Operations Office**
- **DOE Office of River Protection**
- **HAMMER Training Facility**

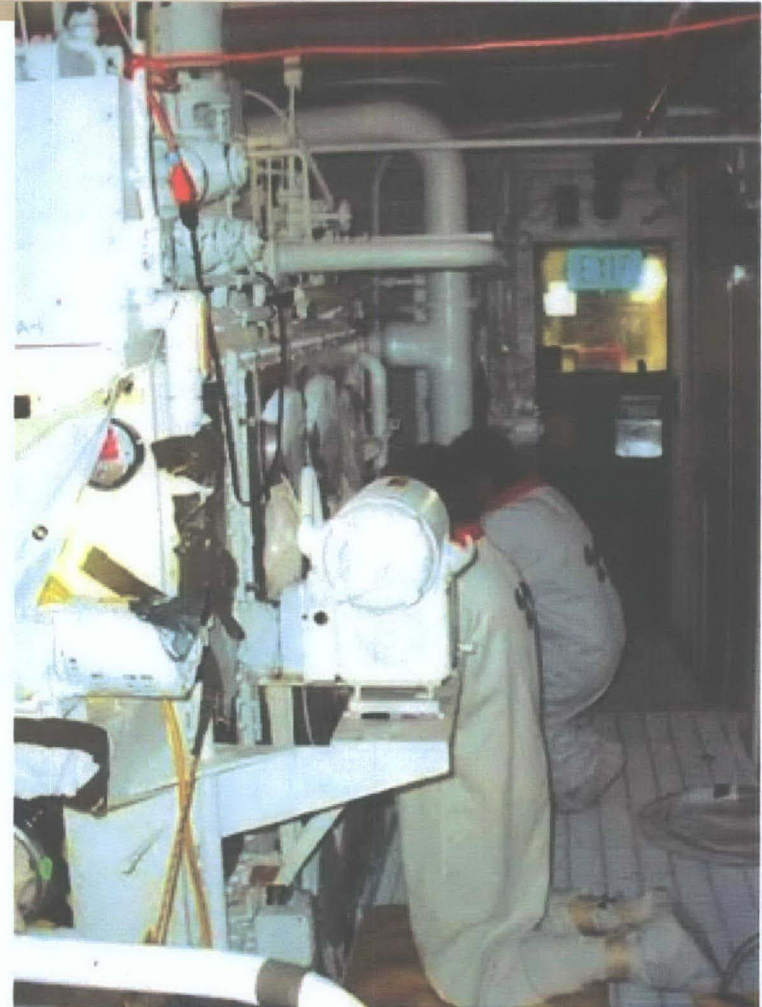
# Approach to Development

- All meetings facilitated by mediator
- Written ground rules
- “No thumbs down” method of consensus
- Scheduled meetings twice per week
- Special sessions scheduled as necessary



# Key Elements of Hanford Site CBDPP

- Definitions
- Building Assessment Process
- Beryllium Work Permits
- Exposure Monitoring Requirements
- Handling of Affected Workers
- Training





# Benefits to Employees

- **Standardization between contractors**
- **Improved clarity of Contractor expectations**
- **Employee exposure sampling protocols**
- **Processes to improve trust**
- **Involvement in the CBDPP Committee**

# Benefits To Contractors

- Clarified expectations
- Process for working through disputes
- Clear process for characterizing buildings



# Lessons Learned - People

- **Identify participants and commitment**
  - Delegates and alternates
- **Define committee authority**
- **Establish ground rules up front**
- **Institute consistent Group Leader/Facilitator throughout process**
- **Ensure Senior Management Teams involved**



# Lessons Learned - Paper

- **Clearly defined expectations from DOE Field Offices**
- **Benchmark all contractor procedures/processes**
- **Establish Charters early**
- **Produce timely meeting minutes and updated documents**
  - **Dedicated scribe**



# Lessons Learned - Process

- Consistent direction from all DOE Field Offices is vital
- Know whether you are creating a program or a procedure
- No hidden deadlines
- Keep set meeting times
- Engage DOE, Contractor Contracting Officers, and Legal throughout the process
- Drive communication back to the stakeholders