

LA-UR-

09-01535

Approved for public release;
distribution is unlimited.

Title: Bose-Einstein Condensation of Triplons in $\text{Ba}_3\text{Cr}_2\text{O}_8$

Author(s): Y. Kohama & M. Jaime, MPA-NHMF, LANL
A. Aczel, McMaster University of Ontario Canada
K. Ninios, University of Florida, Gainesville, FL
H. Chan, University of Florida, Gainesville, FL
L. Balicas, NHMFL, Tallahassee, FL
H. Dabkowska, Brockhouse Institute, McMaster U of Ontario
G. Luke, McMaster University & Canadian Institute of Ontario

Intended for: Physical Review B
Rapid Communication



Los Alamos National Laboratory, an affirmative action/equal opportunity employer, is operated by the Los Alamos National Security, LLC for the National Nuclear Security Administration of the U.S. Department of Energy under contract DE-AC52-06NA25396. By acceptance of this article, the publisher recognizes that the U.S. Government retains a nonexclusive, royalty-free license to publish or reproduce the published form of this contribution, or to allow others to do so, for U.S. Government purposes. Los Alamos National Laboratory requests that the publisher identify this article as work performed under the auspices of the U.S. Department of Energy. Los Alamos National Laboratory strongly supports academic freedom and a researcher's right to publish; as an institution, however, the Laboratory does not endorse the viewpoint of a publication or guarantee its technical correctness.

Bose-Einstein Condensation of Triplons in $\text{Ba}_3\text{Cr}_2\text{O}_8$

A. A. Aczel,^{1,*} Y. Kohama,² M. Jaime,² K. Ninios,³ H. B. Chan,³ L. Balicas,⁴ H. A. Dabkowska,⁵ and G. M. Luke^{1,5,6}

¹*Department of Physics and Astronomy, McMaster University, Hamilton, Ontario, Canada, L8S 4M1*

²*National High Magnetic Field Laboratory, Los Alamos National Laboratory, Los Alamos, New Mexico 87545, USA*

³*Department of Physics, University of Florida, Gainesville, Florida 32611, USA*

⁴*National High Magnetic Field Laboratory, Tallahassee, Florida 32310, USA*

⁵*Brockhouse Institute for Materials Research, McMaster University, Hamilton, Ontario, Canada, L8S 4M1*

⁶*Canadian Institute of Advanced Research, Toronto, Ontario, Canada, M5G 1Z8*

(Dated: March 3, 2009)

By performing heat capacity, magnetocaloric effect, torque magnetometry and force magnetometry measurements up to 33 T, we have mapped out the T-H phase diagram of the $S = 1/2$ spin dimer compound $\text{Ba}_3\text{Cr}_2\text{O}_8$. We found evidence for field-induced magnetic order between $H_{c1} = 12.52(2)$ T and $H_{c2} = 23.65(5)$ T, with the maximum transition temperature $T_c \sim 2.7$ K at $H \sim 18$ T. The lower transition can likely be described by Bose-Einstein condensation of triplons theory, and this is consistent with the absence of any magnetization plateaus in our magnetic torque and force measurements. In contrast, the nature of the upper phase transition appears to be quite different as our measurements suggest that this transition is actually first order.

PACS numbers: 73.43.Nq, 75.30.Kz, 75.30.Sg, 75.40.Cx

Quantum phase transitions (QPT) can be achieved by varying a non-thermal control parameter, such as pressure or applied magnetic field, while at a temperature of absolute zero^{1,2}. These transitions are driven by quantum fluctuations resulting from the uncertainty principle, as opposed to the thermal fluctuations that drive classical phase transitions. A particular type of QPT is realized in a Heisenberg spin dimer system, which possesses a non-magnetic spin-singlet ground state with a gap to the first triplet excited state³. The excited triplets (triplons) can be considered as bosons with a hard core on-site repulsion⁴. The repulsion condition is necessary in order to prevent more than one triplon from lying on a single dimer.

If one applies a magnetic field H to close the spin gap, a critical field H_{c1} is eventually reached which results in the generation of a macroscopic number of triplons. Above H_{c1} , the magnetic field can be varied to control the triplon density, and so it acts as a chemical potential. The system now consists of a series of interacting triplons with a ground state that critically depends on the balance between the kinetic energy and the repulsive interactions. Note that the kinetic energy of the interacting triplons arises from the xy-component of the Heisenberg interdimer interaction, while the nearest neighbour repulsive interaction (different from the on-site repulsion) arises from the Ising or z-component. The delicate balance between these two energies has led to interesting and diverse properties of QPTs in spin dimer systems.

If the repulsive interactions dominate, it is most crucial to minimize this contribution to the microscopic Hamiltonian. The easiest way to do this is to ensure that the triplon density per dimer is a simple rational fraction, as this allows the triplons to form a superlattice. These preferred fractional triplon densities result in plateaus in the magnetization as a function of field, and such behaviour has been observed in $\text{SrCu}_2(\text{BO}_3)_2$ (Ref. [5,6]).

When the kinetic energy terms dominate instead, this contribution will be minimized by allowing the triplons to have freedom to hop from dimer to dimer. The ground state then consists of a coherent superposition of singlets and triplets. No magnetization plateaus are observed in this case, but rather there is a continuous rise in the magnetization from H_{c1} until saturation at H_{c2} . In many cases, the phase boundary at H_{c1} satisfies a power law of the form: $T_c \propto (H - H_{c1})^{2/d}$ (d : dimensionality), which corresponds to a Bose-Einstein condensation (BEC) of triplons universality class⁵. This type of phase transition generates a staggered magnetization transverse to the external field, creating a canted antiferromagnetic state in the intermediate regime between H_{c1} and H_{c2} . This behaviour has been observed in $\text{BaCuSi}_2\text{O}_6$ (Ref. [7]), TlCuCl_3 (Ref. [8]), and $\text{NiCl}_2\cdot 4\text{SC}(\text{NH}_2)_2$ (Ref. [9]). An important property of these systems is that they must possess $U(1)$ rotational symmetry as required by BEC theory¹⁰, or at the very least the anisotropic spin terms must be small enough that they do not alter the universality class of the phase transition.

Recently, a new class of spin dimer compounds have been discovered with the general formula $\text{A}_3\text{M}_2\text{O}_8$ (Refs. [11-13]) where $A = \text{Ba}$ or Sr and $M = \text{Cr}$ or Mn . At room temperature, these compounds crystallize in the $R\bar{3}m$ space group, and the crystal structure consists of MO_4^{4-} tetrahedra and isolated A^{2+} ions. The magnetic M^{5+} ions may carry spins of either $S = 1/2$ or 1, and these are arranged in double-stacked triangular lattices with three-fold periodicity and so form dimers along the c-axis. These systems are all described well by interacting dimer models, and so they provide a new opportunity to study field-induced quantum phase transitions.

In this work, we focus on the particular $S = 1/2$ system $\text{Ba}_3\text{Cr}_2\text{O}_8$. We have completed magnetic torque, magnetocaloric effect (MCE), and specific heat measurements at the National High Magnetic Field Laboratory (NHMFL)

on single crystals 1-5 mg in size. We have also performed magnetic force measurements at NHMFL, using a very small $\sim 1.3 \mu\text{g}$ sample. These measurements allowed us to map out the phase diagram for $\text{Ba}_3\text{Cr}_2\text{O}_8$ and to investigate the associated quantum phase transitions. We observe only two phase transitions as a function of field, and so we find no evidence for magnetization plateaus between H_{c1} and H_{c2} in our torque and force measurements. We also find that the lower phase transition can likely be described by BEC triplon theory, while the upper phase transition appears to be first order.

Single crystals of $\text{Ba}_3\text{Cr}_2\text{O}_8$ were grown by the traveling solvent floating zone method¹⁴, and a detailed room temperature structure determination was completed as described in Ref. [15]. Fig. 1 depicts DC susceptibility measurements of our crystals for two different orientations. The large drop with decreasing temperature is characteristic of systems with non-magnetic spin-singlet ground states, and the small difference between the two curves indicates that this system has a nearly isotropic g-tensor. In accordance with previous work¹¹, we fit the data to an interacting dimer model:

$$\chi_M = \frac{N_A(\mu_B g)^2}{k_B T(3 + \exp(J_0/T) + J'/T)} + \chi_0 + \frac{A}{T} \quad (1)$$

where N_A is Avogadro's number, μ_B is the Bohr magneton, J_0 is the intradimer exchange constant, and J' is the sum of the interdimer exchange constants. The exact arrangement of the exchange constants is described elsewhere¹⁶. The last two terms represent susceptibility contributions from Van Vleck paramagnetism/core diamagnetism and impurity/defect spins respectively. In principle, this fitting method can be employed with g , J_0 , and J' all as separate fitting parameters. However, the fits are generally insensitive to the precise value of J' and furthermore, J' and g tend to trade off with one another. We note here that the exchange couplings J and J' have been determined by recent inelastic neutron scattering measurements to be $J_0 \sim 27.6(2)$ K and $|J'| \leq 6.0(2)$ K respectively¹⁶, and recent electron spin resonance measurements (ESR)¹⁷ suggest the orientation-dependent g-factors are less than 2. These conditions put serious constraints on our fits, and we find that they are consistent with our susceptibility data only if $J' < 0$ (ferromagnetic). For example, if we fix $J' = -6$ K in our fitting, then we find $J_0 \sim 25.2(1)$ K, $g_{ab} \sim 1.94(1)$, $g_c \sim 1.95(1)$, and a Curie constant which corresponds to only $\sim 1\%$ free Cr^{5+} spins.

Magnetic torque was measured as a function of applied field in a resistive magnet at NHMFL. The crystals were offset by a few degrees from the $H \parallel \hat{c}$ orientation so that it would be possible to measure a non-zero torque. A representative plot of torque/field (\propto magnetization) vs. field at 600 mK is depicted in Fig. 2(a). For low fields, only a small torque is measured as we are essentially in a non-magnetic state. However, for $H > 12.70$ T there is an abrupt upturn in the torque due to a strong anisotropy that develops in the susceptibility tensor of the system. This behaviour is consistent with what one would ex-

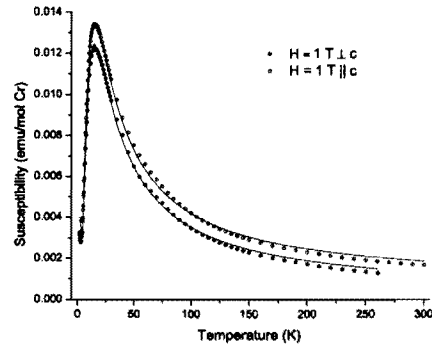


FIG. 1: DC susceptibility measurements of $\text{Ba}_3\text{Cr}_2\text{O}_8$ with an applied field of 1 T.

pect for a magnetically-ordered state. Torque/field then proceeds to increase almost linearly up to the saturation field of ~ 23.37 T. Note that these two critical fields were determined by finding extrema in the second derivative of torque/field (inset of Fig. 2(a)), similarly to what has been done in other cases^{18,19}. The presence of only two critical fields and the lack of magnetization plateaus in our data suggests that the triplons are highly delocalized in $\text{Ba}_3\text{Cr}_2\text{O}_8$ and the kinetic energy terms dominate in the relevant microscopic Hamiltonian. These observations are consistent with the possibility that the lower transition can be described by BEC triplon theory.

An additional feature of the data that is particularly interesting is the magnetic hysteresis observed in association with the upper transition at H_{c2} . This suggests that while the lower transition is likely of a second-order nature, the upper transition is more first-order-like and lattice coupling may play a crucial role there.

Magnetic force measurements were also performed in a resistive magnet at NHMFL using a Faraday balance micromechanical magnetometer²⁰. One advantage of this method over magnetic torque is that one can work with very small samples ($\sim 1 \mu\text{g}$). A plot of the resulting magnetization vs. field at 600 mK is depicted in Fig. 2(b), and it is apparent that the main qualitative features are in agreement with the torque measurement, including the magnetic hysteresis observed near the upper transition. Note that the critical fields were determined in an analogous way to the torque measurements - by locating extrema in the second derivative of the magnetization.

Further details of the phase transitions were uncovered by performing MCE and heat capacity measurements in a resistive magnet at NHMFL using a home-built calorimeter. All measurements were performed with $H \parallel \hat{c}$. Some representative MCE scans are shown in Fig. 3(a) and (b), for cases of sweeping the field both up (dotted lines) and down (solid lines) at 2 T/min. Since the MCE is a quasi-adiabatic process, an abrupt change in the sample temperature is observed upon crossing an order-

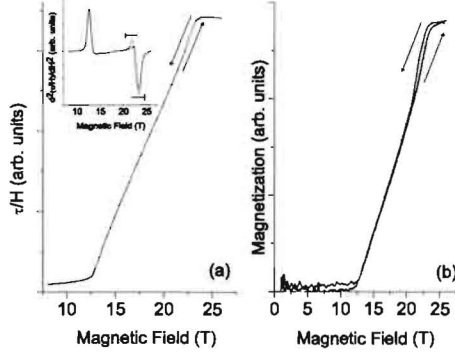


FIG. 2: (a) Magnetic torque measurement at 600 mK. The second derivative of torque/field, shown in the inset, shows two prominent extrema, indicative of the two transitions. (b) Force magnetometry measurement at 600 mK. This data is qualitatively similar to the torque measurement.

disorder transition to ensure entropy conservation²¹. If the phase transition is second order, this process should be reversible - the temperature will increase (decrease) by the same amount upon entering (leaving) the ordered state. However, if the phase transition is first order this will introduce a dissipative component to the temperature change that is always positive, and so the MCE will become irreversible. In the present case, we find the MCE traces are essentially reversible at the lower transition, but are highly irreversible at the upper transition, especially for lower temperatures. This provides further evidence that the lower transition is of a second-order nature, while the upper transition is first order. Note that the transition points were found by locating extrema in the first derivative of $T(H)$ in a similar way to what has been done previously for other systems^{9,18}.

Heat capacity measurements are shown for selected applied fields in Fig. 3(c) and (d). Both the standard thermal relaxation method (for 13, 22, and 23 T) and the dual slope method²² (for 15, 18, and 20 T) were used to estimate the heat capacity. In all cases, the zero field background contribution was subtracted. A large lambda anomaly is observed in the intermediate field cases, but as the field is decreased closer to H_{c1} or increased closer to H_{c2} this becomes much less prominent and the magnitude of the heat capacity drops off sharply. Finally, although the anomaly remains distinctly lambda-like even down to 13 T, at 23 T the anomaly starts to look more symmetric. This suggests that the phase transition becomes more first-order-like in this region, and is consistent with our other measurements.

Fig. 4 combines our results in a phase diagram. We attribute the small discrepancies in the phase boundaries amongst the various techniques to slight differences in sample orientation. The maximum transition temperature to the magnetically-ordered state was found to cor-

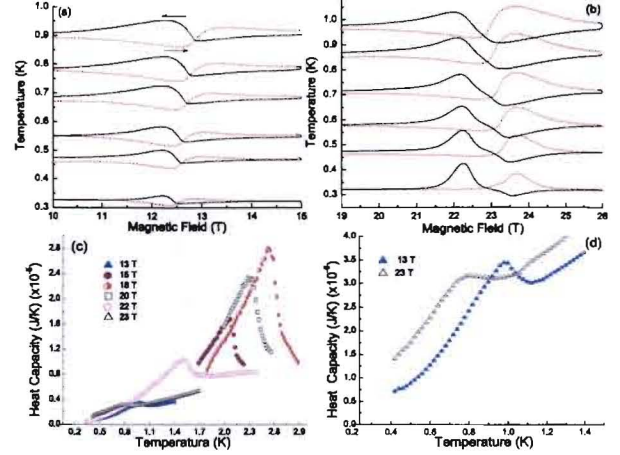


FIG. 3: (color online) (a),(b) MCE measurements showing the lower (upper) transition in $\text{Ba}_3\text{Cr}_2\text{O}_8$ by sweeping the field both up (dotted lines) and down (solid lines). (c) Heat capacity measurements for selected fields. (d) A close-up of the 13 T and 23 T heat capacity curves.

respond to ~ 2.7 K at $H \sim 18$ T. The phase diagram is also very nearly symmetric, as is expected for a system with a much larger intradimer than interdimer interaction (i.e. the present case), and is due to particle-hole symmetry that comes about from the effective Hamiltonian describing these systems²³. The small asymmetry in the phase diagram is likely due to lattice coupling associated with the upper phase transition and possible contributions from the $S_z = 0$ and -1 triplet states. The latter are neglected in the aforementioned Hamiltonian.

Dzyaloshinskii-Moriya (DM) interactions are often the source of spin anisotropy that leads to U(1) symmetry breaking and hence non-BEC behaviour in spin dimer systems. While recent elastic neutron scattering measurements¹⁶ have found evidence for a structural phase transition in $\text{Ba}_3\text{Cr}_2\text{O}_8$ at ~ 70 K from the highly symmetric space group R-3m to the monoclinic space group C2/c, it turns out that the dimer centers are inversion centers in both the low and high temperature structures of this material. This suggests that intradimer DM interactions should be negligible in $\text{Ba}_3\text{Cr}_2\text{O}_8$. However, ESR measurements¹⁷ were performed very recently to study the issue of spin anisotropy in $\text{Ba}_3\text{Cr}_2\text{O}_8$ further, and evidence was found for a weak DM interaction of less than 0.1 meV. The detection of this weak DM interaction suggests either that it is an interdimer effect or that the low temperature crystal structure of $\text{Ba}_3\text{Cr}_2\text{O}_8$ has an even lower symmetry than that of the space group C2/c. In any event, as a result of this finding the most important issue to address is whether the resulting spin anisotropy is negligible in the sense that the lower transition can still be described by BEC theory.

The best way to verify that the spin anisotropy is negligible is to ensure that the lower phase boundary obeys a

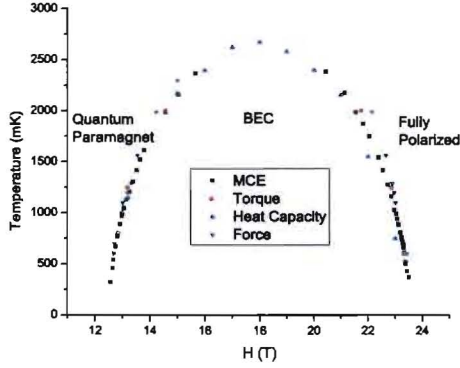


FIG. 4: (color online) The phase diagram of $\text{Ba}_3\text{Cr}_2\text{O}_8$ for the $H\parallel c$ orientation.

power law of the form: $T_c \propto (H - H_{c1})^\nu$ with $\nu = 2/d$. With this in mind, we calculated the critical exponent pertaining to our lower transition to determine whether or not our data satisfied this criterion. More specifically, we used a windowing analysis technique first introduced in Ref. [18]. Our narrowest fitting window contained data points in the range $333 \text{ mK} \leq T \leq 891 \text{ mK}$ and yielded a critical exponent of $0.49(2)$. This is substantially different from any exponent pertaining to a BEC universality class, and actually agrees with the expected exponent of 0.5 corresponding to the Ising universality class for easy-axis magnetic systems. However, determining accurate critical exponents reliably is often quite tricky, as one needs to ensure that the experimental data lies in the universal regime. To this end, recent elastic neutron scattering and heat capacity measurements¹⁷ have determined the lower phase boundary down to 30 mK and a

power law fit with $\nu = 2/3$ seems to reproduce the data well up to $\sim 1 \text{ K}$, suggesting that the lower transition is still well-described by BEC even in the presence of weak DM interactions. This is further supported by the observation of a canted antiferromagnetic state and gapless Goldstone mode in the neutron measurements for $H > H_{c1}$. Regarding the latter, significant anisotropic spin contributions would instead result in an ordered state between H_{c1} and H_{c2} with a gapped excitation mode²⁴.

In summary, we have determined the phase diagram for $\text{Ba}_3\text{Cr}_2\text{O}_8$ through a combination of magnetic torque, magnetic force, MCE, and heat capacity measurements. We have found evidence for only two field-induced quantum phase transitions in this system, as there are no magnetization plateaus in our torque and force magnetometry data for $H_{c1} < H < H_{c2}$. The lower transition appears to be second order and well-described by BEC theory, while the upper transition appears to be first order. The role of lattice involvement in the upper transition and how this may be incorporated within the framework of BEC theory remains an open question. ESR measurements performed in high magnetic fields near H_{c2} may be able to shed some light on this issue.

Acknowledgments

We acknowledge useful discussions with C.D. Batista and technical assistance from A.B. Dabkowski and E.S. Choi. We appreciate the hospitality at NHMFL where the majority of these experiments were performed. A.A.A. is supported by NSERC CGS, and research at McMaster University is supported by NSERC and CIFAR. K.N., H.B.C., and L.B. are supported by NHMFL UCGP.

* author to whom correspondences should be addressed: E-mail: [aczela@mcmaster.ca]

¹ S. Sachdev in *Quantum Phase Transitions*, Cambridge University Press, Cambridge, England (1999).

² M. Vojta, Rep. Prog. Phys. **66**, 2069 (2003).

³ T. Giamarchi, C. Ruegg, and O. Tchernyshyov, Nature Physics **4**, 198 (2008).

⁴ T.M. Rice, Science **298**, 760 (2002).

⁵ H. Kageyama *et al.*, Phys. Rev. Lett. **82**, 3168 (1999).

⁶ K. Onizuka *et al.*, J. Phys. Soc. Jpn. **69**, 1016 (2000).

⁷ S.E. Sebastian *et al.*, Nature **441**, 617 (2006).

⁸ F. Yamada *et al.*, J. Phys. Soc. Jpn. **77**, 013701 (2008).

⁹ V.S. Zapf *et al.*, Phys. Rev. Lett. **96**, 077204 (2006).

¹⁰ T. Giamarchi and A.M. Tsvelik, Phys. Rev. B **59**, 11398 (1999).

¹¹ T. Nakajima, H. Mitamura, and Y. Ueda, J. Phys. Soc. Jpn. **75**, 054706 (2006).

¹² Y. Singh and D.C. Johnston, Phys. Rev. B **76**, 012407 (2007).

¹³ M. Uchida, H. Tanaka, M.I. Bartashevich, and T. Goto, J. Phys. Soc. Japan **70**, 1790 (2001).

¹⁴ A.A. Aczel, H.A. Dabkowska, P.R. Provencher, and G.M. Luke, J. Crys. Growth **310**, 870 (2008).

¹⁵ A.A. Aczel *et al.*, Acta Crystallogr. Sect. E **63**, i196 (2007).

¹⁶ M. Kofu *et al.*, Phys. Rev. Lett. **102**, 037206 (2009).

¹⁷ M. Kofu *et al.*, arXiv:0902.4229 (unpublished).

¹⁸ S.E. Sebastian *et al.*, Phys. Rev. B **72**, 100404(R) (2005).

¹⁹ E.C. Samulon *et al.*, Phys. Rev. B **77**, 214441 (2008).

²⁰ H.B. Chan *et al.*, Mag Lab Reports **15**(1), p. 7 (2008).

²¹ A.V. Silhanek *et al.*, Phys. Rev. Lett. **96**, 136403 (2006).

²² S. Riegel and G. Weber, J. Phys. E: Sci. Instrum. **19**, 790 (1986).

²³ M. Jaime *et al.*, Phys. Rev. Lett. **93**, 087203 (2004).

²⁴ S.E. Sebastian *et al.*, Phys. Rev. B **74**, 180401 (2006).