

LA-UR- 08-4618

Approved for public release;
distribution is unlimited.

Title: Optimal approximation of harmonic growth clusters by
orthogonal polynomials

Author(s): Razvan Teodurescu/LANL/T-13/202489
Ferenc Balogh/Concordia University, Montreal

Intended for: Physical Review Letters



Los Alamos National Laboratory, an affirmative action/equal opportunity employer, is operated by the Los Alamos National Security, LLC for the National Nuclear Security Administration of the U.S. Department of Energy under contract DE-AC52-06NA25396. By acceptance of this article, the publisher recognizes that the U.S. Government retains a nonexclusive, royalty-free license to publish or reproduce the published form of this contribution, or to allow others to do so, for U.S. Government purposes. Los Alamos National Laboratory requests that the publisher identify this article as work performed under the auspices of the U.S. Department of Energy. Los Alamos National Laboratory strongly supports academic freedom and a researcher's right to publish; as an institution, however, the Laboratory does not endorse the viewpoint of a publication or guarantee its technical correctness.

Optimal approximation of harmonic growth clusters by orthogonal polynomials

Ferenc Balogh^{*,†} and Razvan Teodorescu[‡]

^{*}Center for Nonlinear Studies, LANL and

[†]Concordia University, Montréal

(Dated: July 3, 2008)

Interface dynamics in two-dimensional systems with a maximal number of conservation laws gives an accurate theoretical model for many physical processes, from the hydrodynamics of immiscible, viscous flows (zero surface-tension limit of Hele-Shaw flows, [1]), to the granular dynamics of hard spheres [2], and even diffusion-limited aggregation [3]. Although a complete solution for the continuum case exists [4, 5], efficient approximations of the boundary evolution are very useful due to their practical applications [6]. In this article, the approximation scheme based on orthogonal polynomials with a deformed Gaussian kernel [7] is discussed, as well as relations to potential theory.

PACS numbers: 05.70.-a, 02.10.Yn, 02.30.Tb, 05.30.-d, 05.40.-a, 05.50.+q

Introduction – A large class of two-dimensional processes, both deterministic and stochastic, have been mapped to a powerful mathematical model known as *harmonic* (or *Laplacian*) *growth* [8–16]. In this model, a domain $D_+(t_0)$ grows in time t , i.e. its area $t_0 = \pi^{-1} \int_{D_+} dx dy$ (areas are in units of π from now on) has a linear dependence $t_0 = Qt$, with Q the *pumping rate*.

This prescription is obtained as a consequence of the complete formulation as an *exterior* problem: if Γ represents the boundary of D_+ and D_- its complement, we seek the harmonic field p (which may represent pressure, concentration, etc) and the velocity field \vec{v} , such that:

$$\begin{cases} v_n = -\partial_n p, & p = 0 & \text{on } \Gamma, \\ \vec{v} = -\vec{\nabla} p, & \Delta p = 0 & \text{on } D_-, \\ p \sim -\log|z|, & z \rightarrow \infty, \end{cases} \quad (1)$$

with $v_n, \partial_n p$ their normal components on Γ , respectively.

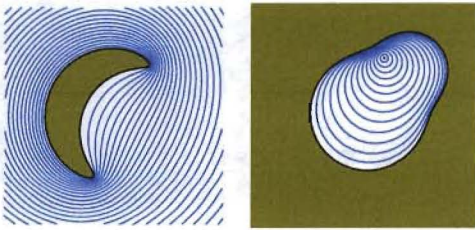


FIG. 1: Simply connected droplets and equipotential lines for the interior and the exterior domains.

An equivalent formulation of the *interior* problem was studied by S. Richardson [17], where the rôle of exterior and interior domains are interchanged: p is harmonic inside up to a finite number of isolated logarithmic singularities (*sources* and *sinks*). Assume for simplicity a single point source at the origin $z = 0$ with pumping rate Q , or, in terms of the pressure p , $\Delta p = \frac{Q}{2\pi} \delta^2(z)$. Richardson proved that for any function $h \in L^1(D_+)$ harmonic in a neighborhood of D_+ we have

$$\frac{d\langle h \rangle_+}{dt} = Qh(0), \quad (2)$$

where $\langle h \rangle_+ = \int_{D_+(t)} h(z) dx dy$. Therefore, taking $h(z) = z^k$ we have that the *interior harmonic moments*

$$v_k = \frac{1}{\pi} \int_{D_+(t)} z^k dx dy, \quad k = 1, 2, \dots \quad (3)$$

are preserved while the area grows linearly with t .

Mapping the interior problem by means of a simple coordinate change $\tilde{z} = 1/z$ and changing the source to a sink ($Q \rightarrow -Q$) implies that in the original exterior problem for D_- , $0 \in D_-$, the *exterior harmonic moments*

$$t_k = -\frac{1}{k\pi} \int_{D_-(t)} z^{-k} dx dy, \quad k = 1, 2, \dots \quad (4)$$

(the interior moments of D_- now) are preserved by the evolution and $dt_0/dt = Q$ [18], where $Q = 1$.

For a simply connected droplet D_+ , the solution of the problem is easily expressed through the conformal map taking the exterior of the unit disk $|\zeta| > 1$ univalently onto D_- , and matching the points at infinity,

$$z = f(\zeta) \equiv r\zeta + \sum_{k=0}^{\infty} u_k \zeta^{-k}, \quad r > 0, \quad (5)$$

with respect to which the pressure and normal component of boundary velocity read

$$p(z) = -\log|f^{-1}(z)|, \quad v_n = |\partial_z f^{-1}(z)|. \quad (6)$$

As shown in [5], conservation of exterior harmonic moments is equivalent to the statement that there is a canonical transformation from the variables z, z^\sharp ,

$$z = f(\zeta), \quad z^\sharp = \bar{f}(\zeta^{-1}), \quad (7)$$

to the variables $t_0, \log \zeta$, i.e. $\zeta \left[\frac{\partial z}{\partial \zeta} \frac{\partial z^\sharp}{\partial t_0} - \frac{z^\sharp}{\partial \zeta} \frac{\partial z}{\partial t_0} \right] = 1$. We note the alternative formulation $dz \wedge dz^\sharp = d \log \zeta \wedge dt_0$.

In this paper, we describe an optimal approximation procedure for the boundary $\Gamma(t)$, as well as for the Cauchy transform of D_+ ,

$$C_{D_+}(z) = \frac{1}{\pi} \int_{D_+} \frac{dx' dy'}{z - z'}, \quad z' = x' + iy', \quad z \in D_-. \quad (8)$$

An example – A superficial analysis of the model described here would lead to the conclusion that, given the integrability of the system, specifying a set of exterior harmonic moments $\{t_k\}$ at a given, initial area T_0 , should yield a solution for $t_0 > T_0$ without major analytical difficulties. In reality, reconstructing the conformal map (5) which corresponds to the data $T_0, \{t_k\}$ is typically a very difficult problem. There are few known correspondences, between classes of moments $\{t_k\}$ and classes of shapes (5) (see [7] for examples). An illustrative case occurs when the exterior harmonic moments form a simple sequence

$$t_k = -\frac{\beta}{k} a^{-k} \quad (k = 1, 2, \dots), \quad (9)$$

where $\beta \in \mathbb{R}^+$ and $a \in \mathbb{C} \setminus \{0\}$ are given parameters. Defining two radii

$$R_1 = \sqrt{\beta}, \quad R_2 = \sqrt{\frac{1+2\beta}{2}}, \quad (10)$$

we have two completely different cases: if $|a| + R_1 \leq R_2$ then we have a doubly connected domain bounded by circles and for $|a| + R_1 > R_2$ the domain is simply connected given by an exterior conformal map of the form

$$f(\zeta) = r\zeta + u + \frac{v}{\zeta - A}, \quad r > 0, |A| < 1. \quad (11)$$

(see FIG. 2). The parameters of $f(\zeta)$ are related to the deformation parameters as follows: setting $u = v/A$,

$$\begin{cases} \beta = T_0 - r^2 + \frac{r\bar{v}}{\bar{A}^2}, \\ a = \frac{r}{\bar{A}} + \frac{v}{A} + \frac{v\bar{A}}{1 - |A|^2}, \end{cases} \quad (12)$$

where $T_0 = r^2 - |v|^2/(1 - |A|^2)^2$ is the area. If $|a| + R_1 > R_2$ then the above equations have a unique solution for r, v and A in terms of β and a .

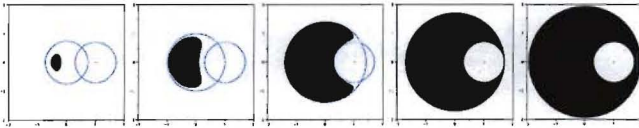


FIG. 2: Laplacian growth for the exterior moments (9).

Domain approximation via orthogonal polynomials– The fact that, even for a rather simple shape (11) the correspondence (12) is quite intricate shows the need for, and practical value of, efficient approximation methods. To that end, we define the following family of orthogonal polynomials: consider the domain specified by the exterior harmonic moments $\{t_k\}$ and t_0 . The function defined in a neighborhood of the origin by

$$V(z) = \sum_{k \geq 1} t_k z^k, \quad z \rightarrow 0, \quad (13)$$

is preserved by the harmonic growth. Now consider the function $W(z) = |z|^2 - 2\Re V(z)$, which we label *confining potential*, and suppose that

$$\int_{\mathbb{C}} |z|^n e^{-NW(z)} d^2 z < \infty \quad (n = 0, 1, 2, \dots)$$

for all for values of the scaling parameter $N > 0$. For fixed N , the orthogonal polynomials $\{P_n^{(N)}(z)\}$ of the weight function $e^{-NW(z)}$ are defined by

$$\int_{\mathbb{C}} P_n^{(N)}(z) \overline{P_m^{(N)}(z)} e^{-NW(z)} d^2 z = \delta_{nm}. \quad (14)$$

The approximation method presented in this work is based on the following statement: as

$$n \rightarrow \infty, \quad N \rightarrow \infty, \quad \frac{n}{N} \rightarrow t_0, \quad (15)$$

the weighted polynomials $|P_n^{(N)}(z)|^2 e^{-NW(z)}$ (which we denote by $\rho_n^{(N)}(z)$ in the following) converge to the conformal measure of the domain $D_+(t)$, with support $\Gamma(t)$:

$$\rho_n^{(N)}(z) = |\partial_z f^{-1}(z)| \left[1 + O\left(\frac{1}{N}\right) \right], \quad n, N \rightarrow \infty. \quad (16)$$

The proof of this result appeared first in [7]. We do not repeat the entire argument, as it would require too much space, but recollect the main ideas: starting from the differential equations satisfied by the weighted functions $\psi_n(z) = P_n^{(N)}(z) e^{-NW(z)/2}$, with respect to variables n/N and z , we integrate perturbatively in powers of N^{-1} , and obtain the expression ([7], equation (76)):

$$\psi(z) \sim \sqrt{[f^{-1}(z)]'} \exp \left[N \left(-\frac{|z|^2}{2} + \Re \int^z S(\zeta) d\zeta \right) \right],$$

where the *Schwarz function* $S(z)$ is defined by the identity $S(z) = \bar{z}$, $z \in \Gamma$. It is known to have the expansion

$$S(z) = V'(z) + \frac{1}{\pi} \int_{D_+} \frac{dx' dy'}{z - z'}, \quad z \rightarrow \infty \quad (17)$$

Since the exponent in the asymptotic expression of $\psi(z)$ vanishes on the boundary Γ and gives a Gaussian decay away from it, the weighted polynomials $\rho_n^{(N)}(z)$ are described, in the $n, N \rightarrow \infty$ limit, by the conformal measure (16). However, this asymptotic result says very little about the behavior of $\rho_n^{(N)}(z)$ for *finite* values of n, N .

In the remainder of this paper, we present numerical evidence for the convergence properties of $\rho_n^{(N)}(z)$ at finite values of their order. We show that the agreement between $\rho_n^{(N)}(z)$ and $|\partial_z f^{-1}(z)|$ is excellent for values of n as little as $n = 20$, and present potential applications of this property. One obvious consequence is related to reconstruction algorithms of domains in this class: assume that the Schwarz function of the domain

D_+ has a branch cut on $\gamma \in D_+$, with real, positive jump function $\rho_s(z)$. Obviously, this may include the case of meromorphic functions with poles in $z_p \in D_+$, for which $\rho_s(z) = \sum_p a_p \delta(z - z_p)$. Then from the asymptotic result

$$\frac{1}{N} \log |\rho_N^{(N)}(z)| \rightarrow W(z) + \frac{1}{\pi} \int_{D_+} \log |z - z'|^2 dx' dy', \quad (18)$$

it follows immediately that the asymptotic distribution of zeros of the orthogonal polynomials converges to $\rho_s(z)$:

$$\lim_{N \rightarrow \infty} \frac{1}{N} \sum_{i=1}^N \log |z - z_i|^2 = \int_{\gamma} \rho_s(z') \log |z - z'|^2 dz'. \quad (19)$$

In a forthcoming publication [19], we will give detailed proofs of (16, 19). In this Letter, we provide a thorough numerical analysis supporting the asymptotic results.

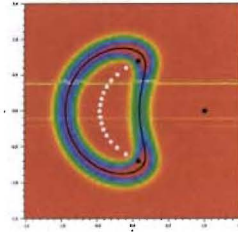


FIG. 3: Localization for the density for $n = 20$ and the conformal measure.

Simulations and numerical study – Let t_0 and the exterior harmonic moments be given through the potential $V(z)$. To fix the scaling limit, let $N(n) = n/t_0$. For fixed n , we have to calculate the entries of the Gram matrix

$$g_{ij}^{(n)} = \int_{\mathbb{C}} z^i \bar{z}^j e^{-n/t_0 W(z)} d^2 z \quad i, j = 0, \dots, n. \quad (20)$$

For potentials $W(z)$ that are converging rapidly enough to infinity as $|z| \rightarrow \infty$, the exponentially decaying weight makes the planar numerical integration a feasible task. The stabilized Gram-Schmidt Algorithm provides the orthogonal polynomials $P_{n,N}(z)$, which is known to be very sensitive to the accuracy of the Gram matrix and thus requires very precise computation of $\{g_{ij}^{(n)}\}$. Then the density $\rho_n^{(N)}(z)$ is obtained from the polynomial $P_n^{(N)}(z)$.

Of course, the usefulness of this approximation scheme relies on the rapidity of the convergence in (16), which may not seem to be very promising. However, our numerical experiment (FIG. 3) shows that in the example (9) above the 'shape' of the conformal measure (the blue curve) is recovered very accurately by the weighted polynomial density of a degree as low as $n = 20$.

The asymptotic behaviour of the zeroes of orthogonal polynomials in the scaling limit (15) was also investigated in the particular case (9). Since $f(\zeta)$ is a rational function

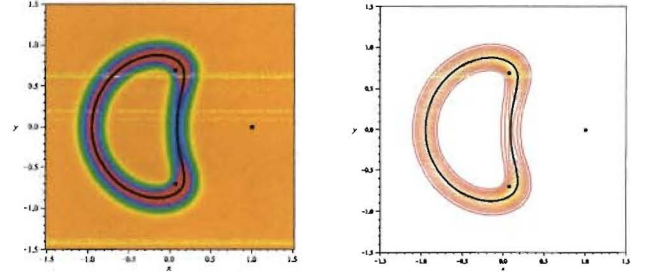


FIG. 4: Density plot and contour plot of the localized density

of order two, the Cauchy transform $C_{D_+}(z)$ (8) in the exterior domain D_- satisfies a quadratic equation

$$A(z)y^2 + B(z)y + C(z) = 0,$$

with rational coefficients in z depending on the parameters of $f(\zeta)$. Being an algebraic function, $C_{D_+}(z)$ can be analytically continued on a plane with a branch cut connecting up the branchpoints

$$z_{1,2} = \frac{v}{A} + Ar \pm 2\sqrt{rv} \quad (21)$$

of the inverse mapping $f^{-1}(z)$. This 'conjugate electric field' created by the uniformly charged domain D_+ is mimicked by the field generated by the normalized counting measure of the zeroes. However, these points seem to accumulate along some curve (as opposed to the 'ground state' configuration in the presence of the background potential $W(z)$ – the so-called *Fekete points* – which are distributed asymptotically uniformly). Since the asymptotic zero distribution must be *real and positive*, the natural choice is dictated by the *Sokhotski-Plemelj formula*: the *critical trajectory* γ is selected by the condition that the jump between the two solutions $y_{\pm} = (-B \pm \sqrt{B^2 - 4AC})/2A$ satisfies

$$\Re((y_+(z) - y_-(z))dz) = 0. \quad (22)$$

The critical trajectory can be found by calculating

$$\Phi(z) := \Re \left(\int_{z_1}^z (y_+(w) - y_-(w)) dw \right) \quad (23)$$

and then plotting the contour $\Phi(z) = 0$. Three trajectories are emanating from each branchpoint: there are two trajectories that connect z_1 and z_2 : the one inside the domain attracts the roots.

Applications – The method presented in this Letter allows to construct optimal approximations with high convergence rates for either the boundary or the branch cuts characterizing domains from the harmonic growth class. This may be used in a number of different situations; here we discuss two relevant examples:

(i) an outstanding problem in viscous two-dimensional flows is formation of boundary singularities (cusps).

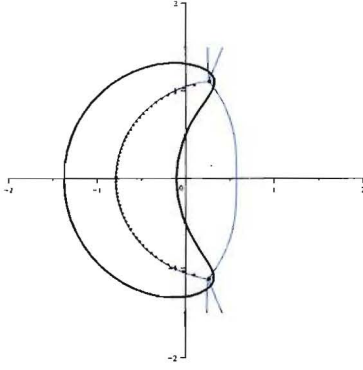


FIG. 5: The critical trajectory and the zeroes for $n = 50$

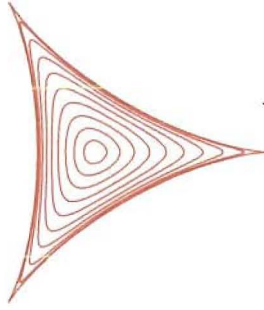


FIG. 6: Singular shape as a result of Laplacian growth

They are known to occur for finite values of the normalized area t_0 , and for many initial conditions [20]. For a particular class of such cusps, with local geometry given by the scaling $x^2 \sim y^{2k+1}$, $k = 1, 2, \dots$, it is not possible to continue the evolution of the boundary beyond the cusp formation, and a weaker type of solution is required.

The weak solution we propose here is based on the equivalence between the distribution of zeros of the orthogonal polynomials and the branch cut of the Schwarz function, (19). These two distributions generate the same Newtonian potential in D_- as the uniform distribution on D_+ (physical droplet), so they may be considered as equivalent solutions before singularity formation, FIG. 6. However, after a cusp is formed, smooth (uniform) solutions are not possible anymore, while the distribution of zeros of the polynomials remains well-defined. A working conjecture states that such a weak formulation will produce solutions which explain the famous fingering patterns observed in physical realizations of this model [21]. This will be substantiated in a forthcoming publication.

In particular, the approximation algorithm can be used to construct numerical solutions according to this prescription, and compare with real, physical patterns [22].

(ii) another practical application of the results presented in this Letter is an efficient algorithm for shape

(boundary) reconstruction when the domain D_+ is given through the reduced data $t_0, \{t_k\}$. For example, such (reduced) representations arise in satellite imaging data compression [6]. Shape reconstruction algorithms are then needed to find the boundary Γ , given the set of moments $t_0, \{t_k\}$, with particular emphasis of good convergence rates. Since the data $t_0, \{t_k\}$ is sufficient for constructing the family of orthogonal polynomials $P_n^{(N)}$ introduced here, we have a boundary approximation algorithm which gives excellent results already at $n = 20$.

Acknowledgments – This work was carried out under the auspices of the National Nuclear Security Administration of the U.S. Department of Energy at Los Alamos National Laboratory under Contract No. DE-AC52-06NA25396. R.T. acknowledges support from the LDRD Directed Research grant on *Physics of Algorithms*.

-
- [1] H. S. S. Hele-Shaw. *Nature*, 58(1489):34–36, 1898.
 - [2] X. Cheng, L. Xu, A. Patterson, H. M. Jaeger, and S. R. Nagel. *Nature Physics*, 4:234–237, March 2008.
 - [3] T. C. Halsey. *Physics Today*, 53:36–41, 2000.
 - [4] I. Krichever, M. Mineev-Weinstein, P. Wiegmann, and A. Zabrodin. *Physica D*, 198(1-2):1–28, 2004.
 - [5] M. Mineev-Weinstein, P.B. Wiegmann, and A. Zabrodin. *Physical Review Letters*, 84:5106, 2000.
 - [6] M. Putinar. *Numer. Math.*, 93(1):131–152, 2002.
 - [7] R. Teodorescu, E. Bettelheim, O. Agam, A. Zabrodin, and P. Wiegmann. *Nuclear Phys. B*, 704(3):407–444, 2005.
 - [8] J. Bear. *Dynamics of fluids in porous media*. Elsevier (New York), 1972.
 - [9] J. W. Cahn and J. E. Hilliard. *The Journal of Chemical Physics*, 28(2):258–267, 1958.
 - [10] T. A. Witten and L. M. Sander. *Phys. Rev. Lett.*, 47(19):1400–1403, 1981.
 - [11] Y. Sawada, A. Dougherty, and J. P. Gollub. *Phys. Rev. Lett.*, 56(12):1260–1263, 1986.
 - [12] J. S. Langer and H. Müller-Krumbhaar. *Phys. Rev. A*, 27(1):499–514, 1983.
 - [13] S. D. Howison. *SIAM J. Appl. Math.*, 46(1):20–26, 1986.
 - [14] M. D. Kruskal and H. Segur. *Stud. Appl. Math.*, 85(2):129–181, 1991.
 - [15] J. S. Langer. *Phys. Rev. Lett.*, 44(15):1023–1026, 1980.
 - [16] U. Nakaya. *Snow Crystals*. Harvard University Press, Cambridge, 1954.
 - [17] S. Richardson. *Journal of Fluid Mechanics*, 56:609–618, 1972.
 - [18] A.N. Varchenko and P.I. Etingof. *Why the boundary of a round drop becomes a curve of order four*. American Mathematical Society, 1992.
 - [19] F Balogh, E Saff, and R Teodorescu. in preparation.
 - [20] Y. E. Hohlov and S. D. Howison. *Quart. Appl. Math.*, 51(4):777–789, 1993.
 - [21] S-Y. Lee, R Teodorescu, and P Wiegmann, LA-UR 07-3622, unpublished.
 - [22] E. Sharon, M. G. Moore, W. D. McCormick, and H. L. Swinney. *Phys. Rev. Lett.*, 91(20):205504, 2003.