

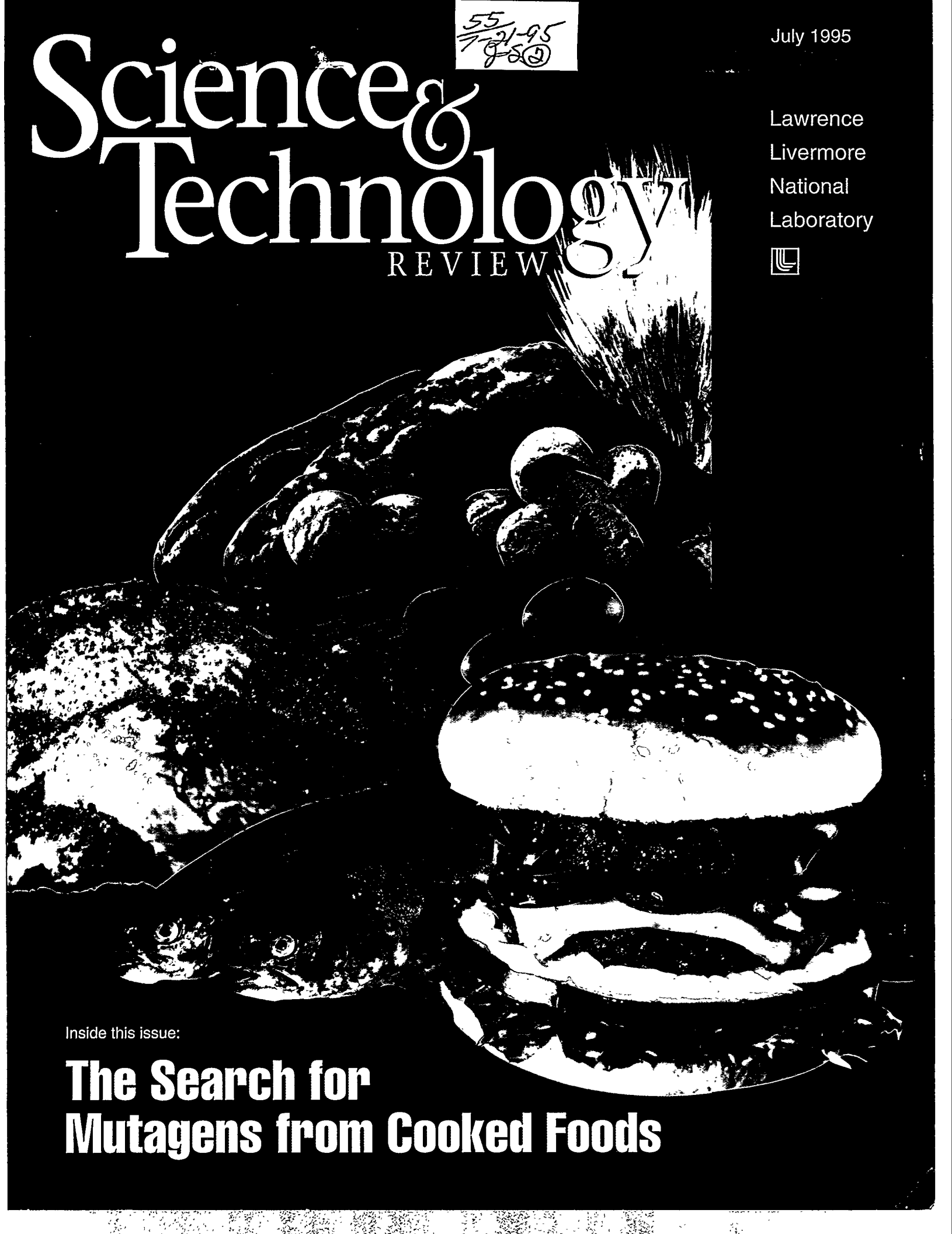
55  
7-21-95  
JSD

July 1995

# Science & Technology

REVIEW

Lawrence  
Livermore  
National  
Laboratory



Inside this issue:

## The Search for Mutagens from Cooked Foods

## About the Cover

This inaugural issue of *Science and Technology Review* features the first of two installments reporting the results of 17 years of Laboratory research on the identification of toxic mutagenic compounds in cooked foods. For the cover, George Kitrinos of the *S&TR* design staff and photographer Jim Stoots created a collage of the foods common in the Western diet that were the focus of this research. The story begins on p. 6.



Cover photo: James E. Stoots

## DISCLAIMER

This report was prepared as an account of work sponsored by an agency of the United States Government. Neither the United States Government nor any agency thereof, nor any of their employees, makes any warranty, express or implied, or assumes any legal liability or responsibility for the accuracy, completeness, or usefulness of any information, apparatus, product, or process disclosed, or represents that its use would not infringe privately owned rights. Reference herein to any specific commercial product, process, or service by trade name, trademark, manufacturer, or otherwise does not necessarily constitute or imply its endorsement, recommendation, or favoring by the United States Government or any agency thereof. The views and opinions of authors expressed herein do not necessarily state or reflect those of the United States Government or any agency thereof.

## Electronic Access

*S&TR* is available on the Internet at <http://www.llnl.gov/str/str.html>. As references become available on the Internet, they will be interactively linked to the footnote references at the end of each article. If you desire more detailed information about an article, click on any reference that is in color at the end of the article, and you will connect automatically with the reference. Available after August 1.

## About *S&TR*



The Lawrence Livermore National Laboratory, operated by the University of California for the United States Department of Energy, was established in 1952 to do research on nuclear weapons and magnetic fusion energy. *Science and Technology Review* (formerly *Energy and Technology Review*) is published monthly to communicate, to a broad audience, the Laboratory's scientific and technological accomplishments, particularly in the Laboratory's core mission areas—global security, energy and the environment, and bioscience and biotechnology. Rather than just inform people of these accomplishments, the publication's goal is to help readers understand them and appreciate their value to the individual citizen, the nation, and the world.

Please address any correspondence concerning *S&TR* (including name and address changes) to Mail Stop L-664, Lawrence Livermore National Laboratory, P.O. Box 808, Livermore, CA 94551, or telephone (510) 422-8961. *S&TR* is also available on the Internet at <http://www.llnl.gov/str/str.html>, and our electronic mail address is [hunter6@llnl.gov](mailto:hunter6@llnl.gov).



Prepared by LLNL under contract  
No. W-7405-Eng-48

## **DISCLAIMER**

**Portions of this document may be illegible in electronic image products. Images are produced from the best available original document.**

**SCIENTIFIC EDITOR**  
William A. Bookless

**PUBLICATION EDITOR**  
Dean Wheatcraft

**WRITERS**  
Lauren de Vore, Robert D. Kirvel, and  
Dale Sprouse

**ART DIRECTOR**  
Ray Marazzi

**DESIGNERS**  
George Kitrinos and Ray Marazzi

**GRAPHIC ARTIST**  
Treva Carey

**CONTRIBUTING ARTIST**  
John Maduell

**COMPOSITOR**  
Louisa Cardoza

**PROOFREADER**  
Catherine M. Williams

# Science & Technology REVIEW

July 1995

Lawrence  
Livermore  
National  
Laboratory

- 2 *S&TR's* Premier Issue
- 3 Commentary on Science and Technology
- 4 The Laboratory in the News

## Features

### Food Mutagens

Potent mutagens are found in cooked foods, such as fried beef. This report, the first of two installments, describes our efforts to identify and measure the abundance of more than a dozen potential cancer-causing byproducts in a variety of foods characteristic of the Western diet.

- 6 The Role of Cooked Food in Genetic Changes
- 11 The Challenge of Identification
- 18 The Cooking Makes a Difference

## Research Highlights

- 26 This Hybrid Vehicle Uses Hydrogen
- 28 Modeling for More Accurate Weather Forecasts
- 31 Patents and Awards
- 32 Abstract

Printed in the United States of America

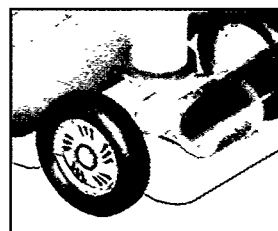
Available from  
National Technical Information Service  
U.S. Department of Commerce  
5285 Port Royal Road  
Springfield, Virginia 22161

UCRL-52000-95-7  
Distribution Category UC-700  
July 1995

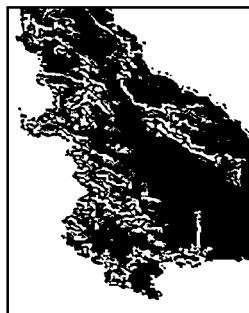
This publication is a continuation of *Energy and Technology Review*. The May and June issues were not published.



Page 6



Page 26



Page 28

DISTRIBUTION OF THIS DOCUMENT IS UNLIMITED

*mw*

MASTER

# Welcome to *Science and Technology Review*

**W**ELCOME to the first issue of *Science and Technology Review* (S&TR), Lawrence Livermore National Laboratory's monthly magazine. Part of our responsibility as a national laboratory is to inform the country about our work and accomplishments as we address science and technology problems of national importance. As many of our readers are aware, we published S&TR's predecessor *Energy and Technology Review* (E&TR) for two decades.

Over the years, E&TR evolved as we made changes in format, design, and style to enhance our ability to explain the Laboratory's work to an audience with, frequently, a more than basic scientific background. S&TR is a natural outgrowth of this evolutionary process. Upon the 20th anniversary of E&TR, we thought it fitting to examine the publication once again to see what could be done to make it still more effective. We confirmed that the journal reflected the wide variety of science and technology being explored at the Laboratory.

As part of this review, we prepared a mission statement that reflects the essence of the new publication's goal:

*The purpose of S&TR is to communicate, to a broad audience, the Laboratory's scientific and technological accomplishments, particularly in the core mission areas of the Laboratory. The publication does more than just inform people of these accomplishments: it helps readers understand them and appreciate their value to the individual citizen, the nation, and the world.*

We also recognized that, like everyone else these days, our readership is extremely busy and often does not have the time to read lengthy articles. Feature articles describing the Laboratory's major accomplishments, projects, and programs will continue to be the mainstay of the journal. We will endeavor, however, to always provide these descriptions in language understandable by educated, interested nonexperts. Feature articles will be supplemented with briefs and research highlights describing, in a few paragraphs or pages, progress in previously reported projects, recent achievements in ongoing programs, and the start of exciting new research efforts. Also included will be a list of recent patents awarded and licensing agreements signed, which will illustrate the scale and scope of the Laboratory's work. In addition, a new commentary column will provide a forum for members of the

Laboratory's top technical management to give their views on important institutional and programmatic issues and on external events affecting the Laboratory's current status and future direction.

Finally, we changed the name of our publication to *Science and Technology Review* to better reflect the Laboratory's mission of applying a broad range of science and technology in the national interest.

In addition to the changes in the journal, we have evaluated its availability and concluded that we could significantly improve the dissemination of technical information about Laboratory programs. During the next several months, we will be adding interested readers to the distribution list. We are also taking advantage of modern information technology by making S&TR available electronically on the Internet via the Laboratory's home page at <http://www.llnl.gov> or directly at <http://www.llnl.gov/str/str.html>. Electronic access will lead to a wider distribution for the journal and to increased technical interactions with researchers elsewhere. As the Laboratory's electronic library grows, we will include hypertext links to technical references in S&TR articles. In this way, we will be able to tailor our articles to a nonexpert audience while providing those readers who desire more specifics with easy access to the detailed technical information.

To help us assess whether we are reaching the goals set for S&TR, we encourage you to complete and return the survey printed on the inside back cover of the magazine. This survey will be a regular part of the journal and our way of staying in close touch with the opinions and desires of our readers. You may also e-mail comments to us by clicking on the [hunter6@llnl.gov](mailto:hunter6@llnl.gov) link at the bottom of our S&TR home page.

Once again, welcome to S&TR. We hope that you will enjoy the publication and find its information interesting and useful.

**William Bookless,**  
Scientific Editor  
*Science and Technology Review*

# Communicating the Worth of Our Work



Bill Lokke  
Acting Deputy Director for  
Science and Technology

**T**HIS past year and a half has been one of the most unsettled periods in the history of the Livermore Laboratory. Our laboratory, like all federal laboratories, has felt the winds of change from Washington. Various committees are questioning the way in which the federal government supports scientific research and the appropriateness of certain programs. Indeed, such questioning is inevitable and necessary in light of trillion-dollar budget deficits, continuing economic uncertainties, and widespread concern about health care, social security, crime and violence, education, and other basic survival issues.

At the same time, many of the problems facing the nation and the world today involve science and technology. For example:

- Ensuring national security, not only by maintaining the U.S. nuclear deterrent but also by stemming the proliferation of weapons of mass destruction.
- Understanding, remediating, and preventing damaging effects of human activities on the environment.
- Solving the mystery of the genetic code.
- Developing advanced technologies, processes, and products (particularly those related to energy production, biotechnology, and electronics) that enhance the quality of life while securing the nation's preeminence in the global marketplace.
- Improving the quality and reducing the cost of health care.

We believe that national laboratories like Livermore are as important now as they have ever been. Our overriding

mission of serving the nation through the application of science and technology remains unchanged. However, as the science and technology required to solve important national problems grows more complex, we must make sure that we explain our work—and the value of that work—in ways that are accessible and meaningful to a broad audience. And we must remember that the value of scientific research (particularly publically funded research) lies, to a large extent, in its ability to solve real-world problems.

No longer is it sufficient for scientists to communicate only with other scientists through professional journals or at technical conferences. Neither is it sufficient for laboratories to communicate primarily with each other and with their funding agencies. We must also reach the large numbers of interested, educated nonexperts—government representatives and congressional staffers, community leaders, and the general public—all of whom through their taxes contribute to the Laboratory's funding and therefore have a vested interest in the Laboratory's work.

*Science and Technology Review* is one of the principal mechanisms by which we inform and educate a broad readership about our research programs and accomplishments. Much of the Laboratory's research is at the cutting edge of science and technology, making it particularly challenging to describe state-of-the-art accomplishments and their significance in widely understood terms. Our goal is that the articles presented here represent the full range of projects at Livermore and convey the challenge and excitement of working at the frontiers of science and technology.

### Cutting system assists in Russian nuclear cleanup

The Laboratory is continuing its efforts to assist in the dismantlement of nuclear weapons in the former Soviet Union. In early April, Lab engineers packed a 6.4-m (21-ft) van with a portable "water knife" cutting system designed to permit safe access to warheads and other "hot" materials. The system will be used for standby response in the event of accidents involving the transport of nuclear materials.

Although water knives are not new, adapting a "portable" system is a unique application. The pressure generator alone weighs 771 kg (1700 lb) while the control panels needed for remote use weigh 136 kg (300 lb). To help move the pressure generator, the van has been fitted with a winch; many components have been adapted with lifts that allow assembly by just one person.

The van containing the cutting system was sent to a base near Moscow. Another van containing a second cutting system was shipped from Livermore in early June. In addition, a Laboratory team was dispatched to Russia to provide training in the use of the emergency cutting systems.

Assembly of the vans and cutters has been the work of the Disablement Technology Group in the Laboratory's Nonproliferation, Arms Control, and International Security directorate. The work is part of Department of Energy's efforts in the Safe Secure Dismantlement Program, an international agreement designed to provide assistance and equipment to Russia, Ukraine, Belarus, and Kazakhstan. *Contact: Norm Stewart (510) 243-7768 (stewart8@llnl.gov).*

### Study suggests aging, genetic damage connection

A study by Lawrence Livermore scientists has found that older people have more DNA damage than younger individuals. DNA is the molecule that carries the body's genetic code. On March 14, James Tucker, senior biomedical scientist, reported the results of the three-year study at the Environmental Mutagen Society's annual meeting in St. Louis, Missouri.

Tucker's research team studied chromosomes in blood samples from a group of individuals ranging in age from 20 to 80 as well as in blood taken from the umbilical cords of newborn infants. The scientists found that genetic damage increased with age and shot up dramatically after age 50. "We expected to observe more genetic damage in older people, and this seems to indicate that damage can accumulate through normal living," said Tucker.

The most common type of damage observed was translocations, where chromosomes break and recombine with other chromosomes. Translocations were found more than 10 times as often in people over the age of 50 than in newborns.

Tucker said the results will benefit researchers studying the effects of radiation on people by providing a baseline against which genetic damage in exposed individuals can be measured.

*Contact: James Tucker (510) 423-8154 (tucker5@llnl.gov).*

### Radar licensee, AlliedSignal, to develop auto system

Amerigon Inc. of Monrovia, California, has announced an agreement under which AlliedSignal Inc., one of the auto industry's largest electronics suppliers, will join in the development of an auto radar system based on LLNL technology.

Amerigon Inc. holds the license from the Lab to use the radar advance, called Micropower Impulse Radar, for automotive safety applications. Amerigon plans possible applications of the radar as a device to signal when vehicles are in a driver's blind spot, as a backup warning system, as a parking aid, and for triggering side-impact air bags.

The new technology was invented by Livermore engineer Tom McEwan in connection with his work for the Lab's Nova laser. The radar has been used as a part of a system to measure the balance and power output of the laser's 10 beams and as the heart of the diagnostics that measure neutrons from the fusion reactions.

For \$10 to \$15 in off-the-shelf components, the Micropower Impulse Radar can do the same tasks as equipment costing \$40,000. Since the new radar technology was announced in March 1994, the Laboratory has received over 2000 calls from businesses and individuals in at least 15 nations.

*Contact: Tom McEwan (510) 422-1621 (mcewan@llnl.gov).*

### Goal is to spot small, covert nuclear tests

Laboratory researchers are attempting to develop an improved method for identifying covert nuclear tests. Current identification techniques are efficient at identifying detonations of 150 kilotons or greater, the yield limit imposed by the Threshold Test Ban Treaty. They are not able, though, to differentiate effectively between small evasive nuclear tests and other seismic events, such as earthquakes or mining activity. Conceivably, proliferant nations might test with smaller nuclear devices to take advantage of the fact that small explosions are more difficult to identify.

One promising identification method being explored by Lab researchers compares two kinds of seismic waves—called P and S waves—generated by both earthquakes and nuclear explosions and looks for differences in the size of their spectral ratios at many frequencies. A spectral ratio is the ratio of the spectral amplitudes of two signals such as a P and S wave.

A weakness of the approach is that it probably would not be able to discriminate between large-scale concentrated chemical explosions and small nuclear detonations, according to Peter Goldstein, the principal investigator working on the detection technique for the Lab's Nonproliferation, Arms Control, and International Security directorate. However, efforts are under way to develop techniques for identifying such explosions. *Contact: Peter Goldstein (510) 423-1231 (peterg@llnl.gov).*

### Lab and MIT operate tokamak via Internet

Laboratory scientists teamed up with colleagues from the Massachusetts Institute of Technology recently to demonstrate the first transcontinental operation of a fusion experiment via the Internet. Using a Department of Energy subnet of the global Internet known as the Energy Sciences Network, managed from Livermore, MIT scientists successfully operated the Alcator C-Mod reactor in Cambridge over ESnet. On the first full day of remote experiments, 21 of 35 shots were controlled from Livermore.

Although aimed at proving the technical feasibility of running a tokamak remotely, the LLNL-MIT Internet collaboration also allowed scientists to learn more about managing the efforts of research groups working at the same time in different locations on joint equipment.

"This demonstration was the definitive test of controlling a large, complex physics experiment from a remote location,"

says physicist Tom Casper, who leads the Laboratory's effort in the collaboration. "This technology is important not only to fusion, but also to other scientific applications—such as medical systems or environmental work—where real-time access and control are needed from various locations around the country."

*Contact: Tom Casper (510) 422-0787 (casper1@llnl.gov).*

### Researchers explore MACHOs in dark matter

An international team of scientists reports that Massive Compact Halo Objects, or MACHOs, constitute less dark matter in the Milky Way than was previously thought possible. One conclusion is that some other unknown type of object makes up the dark matter. On the other hand, the findings may mean that the current model for the halo of dark matter in our galaxy is inaccurate. The findings are reported in the April 10 issue of *Physical Review Letters*.

In their search for MACHOs, the team observed three microlensing events instead of the 15 that were expected if MACHOs made up all of the ubiquitous dark matter. Microlensing is the brightening of a star that indicates the passage of a large object in front of it, thereby magnifying, as if through a lens, the light passing around the object. The September 20, 1993, issue of *Nature* called this group's first observation of microlensing, which garnered worldwide attention, the "footprint of dark matter."

The MACHO collaboration, which consists of 18 researchers from eight institutions, is funded in part by the Laboratory. For the past two years, the collaboration has monitored some 8.6 million stars in the Large Magellanic Cloud with sophisticated camera systems, each of which contains 16 million pictures. The search for dark matter will continue for at least three years at the great Melbourne Telescope at Mount Stromlo Observatory near Canberra, Australia.

*Contact: Charles Alcock (510) 423-0666 (alcock@igpp.llnl.gov).*



# FOOD MUTAGENS: The Role of Cooked Food



# in Genetic Changes

*When food derived from muscle is heated, potent mutagens are produced. For nearly two decades, LLNL researchers have studied the formation of toxic mutagenic compounds in red meats and other foods containing protein. This report, the first of two installments, focuses on the identification of food mutagens and measurement of their abundance in cooked foods as a function of cooking temperature and time.*



**A**CCORDING to a common, rather simplistic notion, we are what we eat. On a far more empirical level, epidemiological studies reveal a connection between diet and adverse health consequences. Many observed differences in cancer rates worldwide, including incidences of colon and breast cancer, are linked to variations in human diets.

Strong evidence suggests that mutations are the initiating events in the cancer process. In other words, the complex sequence of cellular changes ultimately leading to malignant tumors is thought to begin with structural changes—mutations—within the molecular units that make up the genes.

For 17 years, LLNL researchers have been investigating certain biologically active compounds in foods that can trigger tumors in animals, at least after exposure to high concentrations, by producing cellular mutations.

At first glance, identifying the mutagens that might put us at risk and understanding how they affect the body appear to be simple matters. In fact, the opposite is true. Consider just a few of the questions that must be addressed to understand the entire picture of diet-induced mutations and possible links to cancer. Exactly what compounds in foods are dangerous, how are the compounds formed during cooking, in what amounts are they

present after cooking, and how toxic or cancer-causing are they? What chemical changes take place metabolically at the molecular level after the mutagenic substances are consumed? For example, what role do metabolic enzymes play, how is DNA affected, and how might tumors be triggered in the body's somatic cells? What chemical, tissue, animal, and human models might be useful to estimate risk to the human population? Are all people affected similarly, or are some resistant to cancer-causing effects? If people vary in cancer incidence, what accounts for the differences in susceptibility?

**Table 1.** Some of the required interdisciplinary research, analytic methods, and tools needed to understand the possible connection of mutagens in cooked food to cancer.

Issues	Research required	Analytic methods and tools
<ul style="list-style-type: none"> <li>• What cooked foods contain mutagens?</li> <li>• What are the mutagenic compounds?</li> <li>• What amounts are produced?</li> </ul>	<ul style="list-style-type: none"> <li>• Chemical extraction and purification</li> <li>• Identification and quantification</li> <li>• Proof of structure</li> <li>• Synthesis of isomers</li> </ul>	<ul style="list-style-type: none"> <li>• Gas chromatography (GC)</li> <li>• Liquid chromatography (LC)</li> <li>• Mass spectrometry (MS)</li> <li>• High-resolution mass spectrometry (HRMS)</li> <li>• Nuclear magnetic resonance (NMR) spectrometry</li> <li>• Ames/<i>Salmonella</i> test</li> <li>• Monoclonal antibodies</li> </ul>
<ul style="list-style-type: none"> <li>• By what mechanism are mutagens formed during cooking?</li> </ul>	<ul style="list-style-type: none"> <li>• Study precursors and reaction conditions in chemical models</li> <li>• Aqueous vs dry heating</li> <li>• Vary cooking temperature</li> </ul>	<ul style="list-style-type: none"> <li>• Modeling mutagens from               <ul style="list-style-type: none"> <li>– creatine</li> <li>– creatinine</li> <li>– amino acids</li> <li>– sugars</li> </ul> </li> <li>• Heavy isotope incorporation</li> </ul>
<ul style="list-style-type: none"> <li>• How potent (mutagenic) are the compounds?</li> </ul>	<ul style="list-style-type: none"> <li>• Mutagenicity research (e.g., use chemical to induce mutations, and count frequency of mutant cells or chromosomal changes)</li> </ul>	<ul style="list-style-type: none"> <li>• High-performance liquid chromatography (HPLC)</li> <li>• Ames/<i>Salmonella</i> test</li> <li>• Animal mutation studies               <ul style="list-style-type: none"> <li>– Mice</li> <li>– Chinese hamster ovary (CHO) cell cultures</li> </ul> </li> </ul>
<ul style="list-style-type: none"> <li>• How are mutagens activated metabolically?</li> </ul>	<ul style="list-style-type: none"> <li>• Study chemical intermediates (bioactivation pathways)</li> <li>• Modulate metabolism in cell models</li> <li>• Radioactive labeling</li> </ul>	<ul style="list-style-type: none"> <li>• Cell models               <ul style="list-style-type: none"> <li>– Mammalian cell systems</li> <li>– Bacterial cell cultures</li> </ul> </li> <li>• Enzyme inhibitors</li> </ul>
<ul style="list-style-type: none"> <li>• How is DNA affected?</li> </ul>	<ul style="list-style-type: none"> <li>• DNA damage and repair</li> <li>• DNA binding analysis</li> <li>• Data adduct analysis</li> </ul>	<ul style="list-style-type: none"> <li>• Computational chemistry analysis</li> <li>• <sup>32</sup>P-postlabeling of DNA adducts</li> <li>• Accelerator mass spectrometry (AMS)</li> <li>• Models               <ul style="list-style-type: none"> <li>– Whole animals (<i>in vivo</i>)</li> <li>– Animal cells in culture (<i>in vitro</i>)</li> <li>– Bacterial assays</li> </ul> </li> </ul>
<ul style="list-style-type: none"> <li>• How are tumors induced?</li> </ul>	<ul style="list-style-type: none"> <li>• Carcinogenicity research (e.g., assess tumor induction in various tissues in laboratory animals)</li> </ul>	<ul style="list-style-type: none"> <li>• Animal models               <ul style="list-style-type: none"> <li>– Monkeys</li> <li>– Rats</li> <li>– Mice</li> </ul> </li> </ul>
<ul style="list-style-type: none"> <li>• What are the health risks from exposure?</li> <li>• What people are affected?</li> <li>• Who is most at risk?</li> </ul>	<ul style="list-style-type: none"> <li>• Dose-response assessment in humans</li> <li>• Adduct formation as an indicator of exposure</li> <li>• Risk assessment</li> <li>• Extrapolation from animal studies</li> </ul>	<ul style="list-style-type: none"> <li>• <sup>32</sup>P-postlabeling of DNA adducts</li> <li>• Accelerator mass spectrometry</li> <li>• Epidemiology</li> </ul>

Clearly then, isolating, identifying, and assessing the biological activity of mutagenic compounds in food is a difficult problem requiring extensive effort. Table 1 is an overview of some of the research issues addressed and analytic methods used in this field of investigation. This series of articles focuses on the first five questions under "Issues" listed in Table 1. A second installment in *Science and Technology Review* will address the remaining issues.

A simple analogy can help put a key feature of our work into perspective. The compounds we have been investigating for nearly two decades—the aromatic heterocyclic amines—are present in cooked foods at very low levels, in the range of about 0.1 to 50 parts per billion. Isolating material at the part-per-billion level is equivalent to pouring a jigger of Scotch into the hold of a full supertanker and then trying to retrieve it again. Although the compounds we study are present in very small amounts, they are also the most mutagenic compounds ever found, and they produce tumors in mice, rats, and monkeys. Such knowledge, combined with the fact that these compounds are present in many foods characteristic of the Western diet and that certain diets are known to influence tumors at several body sites, gives our research an extra sense of urgency.

## LLNL's Approach

The single aspect that best characterizes our research on food mutagens and carcinogens—and sets our work apart from almost all other efforts around the world—is its multidisciplinary nature. Biomedical scientists at LLNL routinely collaborate with investigators working in analytical chemistry, synthetic chemistry, quantum chemistry, physics, the

environmental sciences, and forensics (Figure 1). Our research requires tools such as accelerator mass spectrometry and nuclear magnetic resonance spectrometry, to name a few. The Laboratory is one of the few places that brings together the broad expertise and state-of-the-art analytic tools required to fully understand each important aspect of the problem of mutagens and carcinogens in the human diet. The way we became involved in this field of research has much to do with our role as a national laboratory with interdisciplinary research programs.

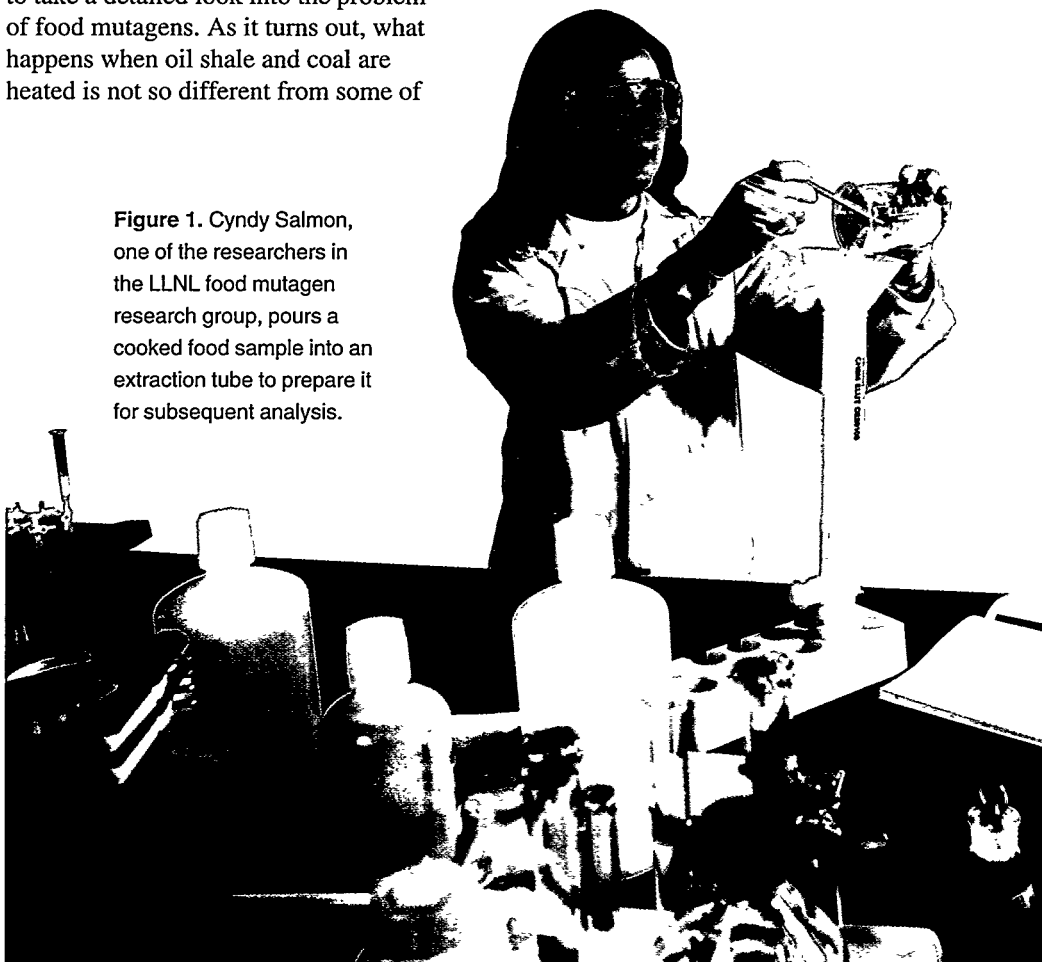
Mutagens are the damaging agents that can structurally change the molecular units that make up the genes (that is, the genetic material, DNA) or the relation of one chromosome to another. For many years, LLNL investigators have been studying some of the ways that x rays, ultraviolet light, and some chemicals in the environment can act as mutagens. Carcinogens are agents that incite the development of a cancerous tumor or other malignancy. Some 80 to 90% of mutagenic substances are also carcinogenic. More than 50 years ago, scientists painted the skin of mice with extracts from heated animal muscle and found that the extracts were carcinogenic, but the research went no further.

By the early 1970s, Bruce Ames at the University of California, Berkeley, had developed a biological test to measure the mutagenic potency (mutagenicity) of substances.<sup>1\*</sup> In the late 1970s, T. Sugimura, who directed research at the National Cancer Center in Tokyo, applied the Ames method and published the fact that smoke condensate from cooking and the charred surface of broiled fish and beef were mutagenic.<sup>2</sup> One year later, Barry Commoner, working at Washington University, St. Louis, used the Ames method to show that cooking

temperature and time affect the formation of mutagens in food.<sup>3</sup>

The news that cooking amino acids (the building blocks of proteins) and muscle-containing foods could be dangerous triggered considerable scientific interest around the world. In 1978, biomedical researchers at LLNL were working on the problem of mutagenic chemicals produced by oil shale retorting and coal gasification. Because of our combined expertise in chemical analysis (including different types of chromatography and spectrometry), biological analysis (including the Ames mutation assay), and our emerging program in genetics and toxicology, we received a multiyear contract from the National Institute of Environmental Health Science (NIEHS) to take a detailed look into the problem of food mutagens. As it turns out, what happens when oil shale and coal are heated is not so different from some of

Figure 1. Cyndy Salmon, one of the researchers in the LLNL food mutagen research group, pours a cooked food sample into an extraction tube to prepare it for subsequent analysis.



\*All references are at the conclusion of the third part of this installment on p. 25.

the chemical processes that occur when a hamburger is cooked.

Our work on food mutagens also parallels our interest in the mechanisms by which pesticides and many other toxic chemicals can elicit adverse biological responses. For example, benzo[a]pyrene is a widely studied pollutant found in combustion products, and it has been isolated from burned fat and cigarette smoke. However, this compound becomes carcinogenic only after it interacts with DNA following oxidation by metabolic enzymes. The production of such enzymes and their roles in changing the chemical reactivity of compounds are part of the body's normal biological response to certain foreign substances. We are learning that similar "metabolic activation" takes place before food mutagens become harmful.

Today, our research is funded primarily by the National Cancer Institute, with additional support from the Laboratory Directed Research and Development program and other sources. There are approximately 50 other prominent research teams worldwide studying the heterocyclic amines. However, except for one other program in Japan, ours is the only team that brings a truly multidisciplinary approach to the problem of understanding mutagens and carcinogens associated with cooked food and their consequences at the cellular, genetic, and molecular levels.

## A Problem of Strategy

Strictly speaking, it is inaccurate to say that cooked foods contain mutagens. More precisely, certain cooked foods contain premutagenic substances (promutagens) that are metabolized by enzymes naturally present in body tissues, leading to the formation of one or more reactive mutagenic substances. Conventionally, however, "promutagen" and "mutagen" are used synonymously, and we have followed that practice here unless the point being made about the research demands a precise distinction.

At the outset of our research, we were faced with problems of strategy. Studying substances that are present at very low concentrations imposes many research constraints. If we focused on only a few foods, as seemed wise, then our results and their implications for public health might be misinterpreted. Instead, we decided to examine the foods that are the principal sources of cooked protein: meats (any muscle-containing food, including fish), eggs, beans, cheese, and tofu. Whereas we initially focused on meats, especially fried beef, we have now expanded the range of foods to include cooked breads and grain products, heated flour from many different plant sources, and meat substitutes.

Over the years, our research has also evolved from relatively simple concepts and approaches to more sophisticated ones. Initially, we had to identify the mutagenic compounds in heated foods because many were not known (that is, neither synthesized nor analyzed). Thus, we focused our efforts on identifying the chemical composition and structure of mutagens, assessing how different

cooking procedures affect the formation of mutagens, and determining the amount (abundance) of the mutagenic products. Even though chemical identification and quantification are still important activities, our work has expanded to include many other aspects of the problem.

For example, we developed techniques to help us learn how mutagens are metabolized in the body. We use animals as models to understand complex metabolic pathways and are developing cell-culture methods that model human metabolic systems. One particularly important issue is how metabolites (the intermediate products formed by enzymes) interact with the genetic material. We need to know exactly what takes place at the molecular level, including covalent binding with and structural changes to specific components of DNA. This work taps the skills and facilities in several related research programs, including the Human Genome and DNA repair projects. (See the April/May 1992 and April 1993 issues of *Energy and Technology Review* for more background on these two programs.)

In assessing the effects of low-level exposure to food mutagens, we make use of Laboratory expertise in accelerator mass spectrometry (AMS). Yet another part of the story is the differences among humans in susceptibility to cancer, which has become our newest effort. In essence, our success in recent years is derived not so much from simply applying standard analytical methods by themselves as from combining biological analysis with state-of-the-art analytical tools available at LLNL to study all aspects of the health risks, ranging from dietary exposure to effects in model systems and humans.

# FOOD MUTAGENS: The Challenge of Identification

In the foods that make up the Western diet, the most common mutagens belong to a class collectively called the amino-imidazoazaarenes (AIAs). Not all the known food mutagens are AIAs, but the commonly found ones are. As shown in Figure 2, AIA compounds have one or two aromatic ring structures fused to the imidazole ring. They also have an amino group ( $\text{NH}_2$ ) on the number-2 position of the imidazole ring and can have methyl groups ( $\text{CH}_3$ ) of varying number and location.

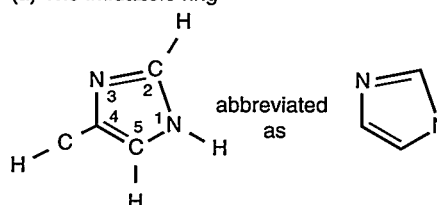
Of the list of toxic substances known to be produced during cooking, the most important may well be the AIAs. Also referred to as heterocyclic amines, these compounds are potent mutagens produced at normal cooking temperatures in beef, chicken, pork, and fish when fried, broiled, or grilled over an open flame. The pan residues that remain after frying also have high

mutagenic activity, indicating that meat gravies can be a source of exposure. Our research suggests that smoke from cooking muscle meats is mutagenic as well, but any such air exposure is likely to be far less than that from eating the cooked food. Other foods, such as cheese, tofu, and meats derived from organs other than animal muscle, have very low or undetectable levels of AIA mutagens after they are cooked.

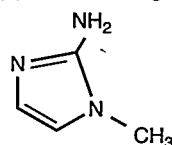
## Extraction

Analyzing cooked foods for mutagens requires many different methods (Figure 3). The toxic compounds in food must first be

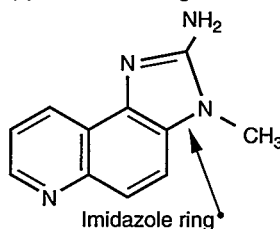
(a) The imidazole ring



(b) Imidazole ring with an amino and methyl group

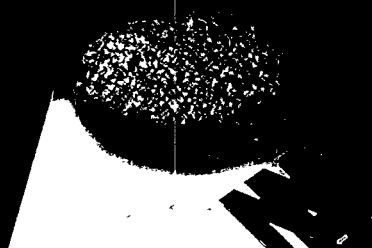


(c) The food mutagen IQ



**Figure 2.** Structure of the amino-imidazoazaarenes (AIAs), also called heterocyclic amines. (a) The imidazole ring is common to all AIAs. Numbers show the position of atoms on this ring. (b) In the AIAs, an amino group and one or more methyl groups are attached. (c) IQ, one of the potent AIAs found in cooked meats, has two aromatic rings attached to the imidazole ring. The mutagenic activity of the different heterocyclic amines varies by several orders of magnitude and can be increased when one or more additional methyl groups are present.

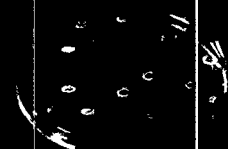
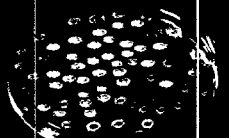
### Step 1. Extract mutagens from cooked food



Solid-phase extraction

### Step 3. Detect Mutagenic Activity

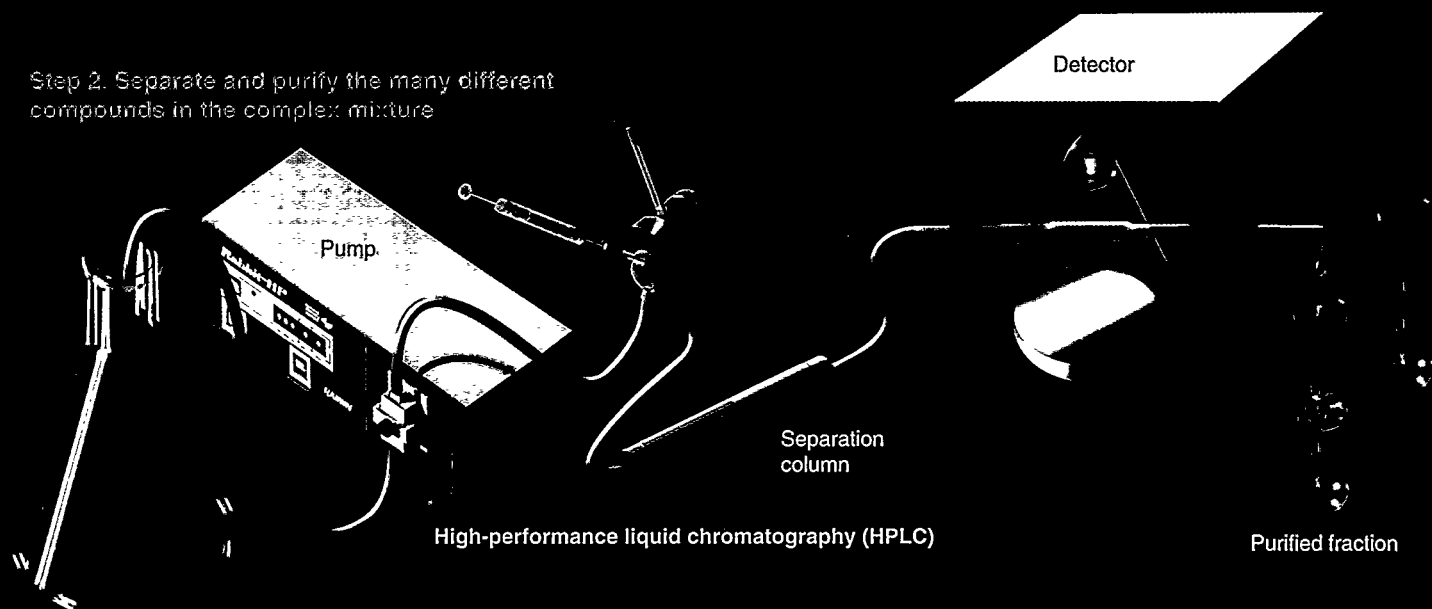
#### Ames/Salmonella Test

Combine food extract  
and bacteriaCombine food extract,  
bacteria, and enzymesCount revertant colonies  
(baseline measurement)

Count revertant colonies

Figure 3. Some of the steps required to extract, separate, purify, and confirm the potency and chemical structure of mutagens in cooked food. These steps show a typical sequence of events during research on a given mutagen. However, the sequence shown here can vary depending on whether our objective is to study a known mutagen or to assess the properties of a new candidate. Each of the steps is described in more detail in the text.

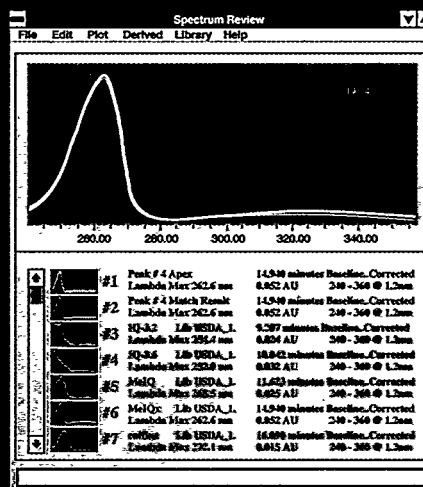
Step 2. Separate and purify the many different compounds in the complex mixture



Step 4. Subsequent Characterization

Mass spectrometry

Determine molecular weight (MW) and chemical composition



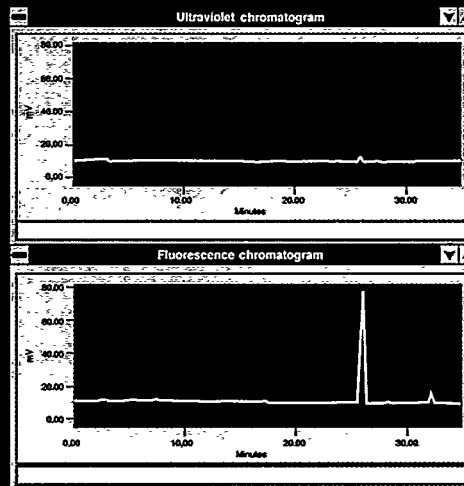
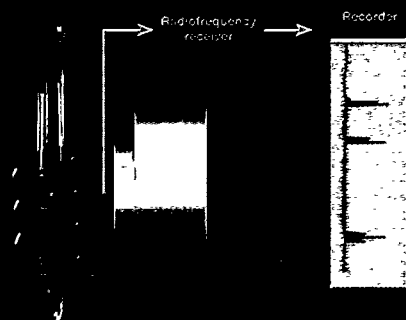
Spectrum review

Matching spectra

Confirm mutagen identity

Nuclear magnetic resonance (NMR) spectrometry

Determine definitive structure



Ultraviolet chromatogram

y axis = Absorbance  
x axis = Retention time

Detect peak absorbance at a particular retention time

Fluorescence chromatogram

y axis = Fluorescence  
x axis = Retention time

Increase sensitivity for fluorescence only





**Figure 4.** Researcher Cyndy Salmon uses solid-phase extraction to extract a sample by passing it through a series of small cylinders containing small amounts of organic particles.

chemically extracted before purification. Over the years, we and other researchers have dramatically improved on the original extraction techniques that required various acids or mixed organic solvents in multistep schemes.

We now use solid-phase extraction, which is based on a method first described by G. A. Gross in 1990.<sup>4</sup> After homogenizing cooked food in a blender to obtain a uniform sample, we can extract a sample quickly and efficiently by passing it through a series of small tapered tubes containing chemically activated particles (see step 1 in Figure 3 and Figure 4). The small amounts of organic solvents that are needed during this solid-phase extraction generate a minimum of hazardous waste.

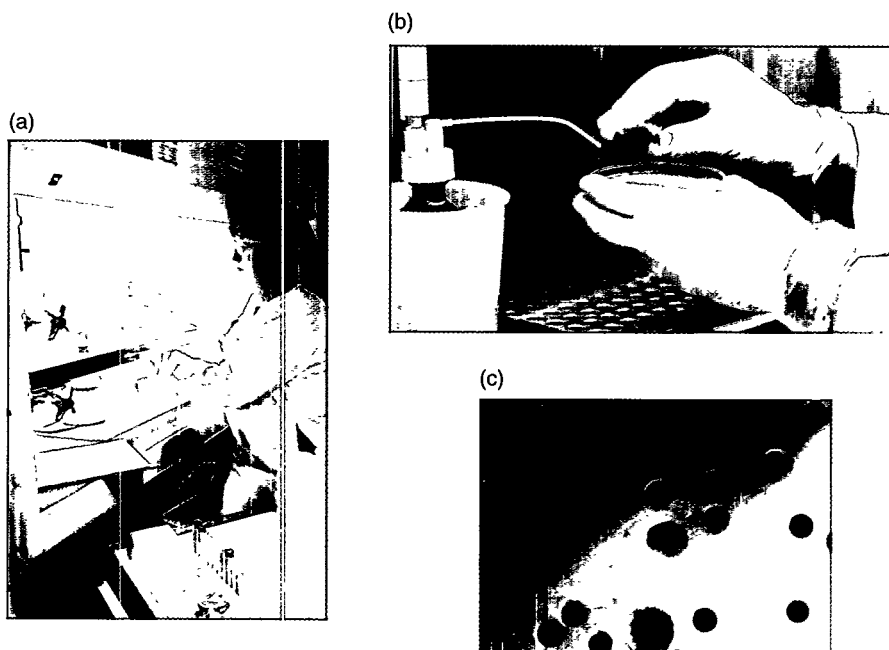
### Separation and Purification

We use high-performance liquid chromatography (HPLC) for final separation and purification of the extracted compounds in a food sample

(see step 2 in Figure 3). Liquid chromatography is a standard technique in chemistry labs. In HPLC, a liquid mixture is pumped under high pressure through a long, narrow tube filled with fine silica particles. This material differentially retards the passage of different molecular components so that each one exits after a characteristic delay or retention time. Our recent solid-phase extraction method together with HPLC allows excellent quantification from small samples (about a tenth of a hamburger patty, or one bite) and a 1- to 2-day turnaround time for results.

For unknown mutagens, a separation is carried out in several stages. We obtain about 100 fractions at the final stage, where a "fraction" is one portion of the sample material that is captured in a separate vial after exiting the HPLC detector. One fraction at the final stage of separation contains as little as a billionth of the starting material. However, because the extracts from meat and other food products cooked at elevated temperatures are tremendously potent, only a very small sample is

**Figure 5.** Julie Avila, one of the researchers in the LLNL food mutagen research group, tests mutagens in cooked beef using the Ames/*Salmonella* test. (a) The food sample is added to a mixture containing bacteria, nutrients, and enzymes needed for metabolism, and then (b) poured onto a petri plate. (c) Close up of growing bacterial colonies (called revertants) after 48 hours. Counting the colonies gives us a number that represents the sample's mutagenic activity.



needed for the next step—testing for mutagenic potency.

## Detection of Mutagenicity

The most widely used detection method for mutagenic potency is the Ames/*Salmonella* mutation test,<sup>1</sup> which is described in more detail in the box on p. 16. This test for mutagenic activity is exquisitely sensitive and relatively inexpensive. It is also convenient because each analysis requires only 48 hours, and many samples can be analyzed in parallel (Figure 5).

The essential point to remember is that the Ames test (step 3 in Figure 3) gives us a number by which we can express the mutagenic *activity* of a given compound or food extract. This number by itself for a single mutagen would have little meaning. However, we now have numbers for most of the known mutagens in cooked foods and for over a hundred additional mutagens from other sources, so we can compare the mutagenic activity of many different structural types. When the Ames test is

used during initial screening for new mutagens and carcinogens, it serves as a guide to the chemical purification of biologically active molecules. It can also be used to test and compare the potency of newly synthesized chemicals.

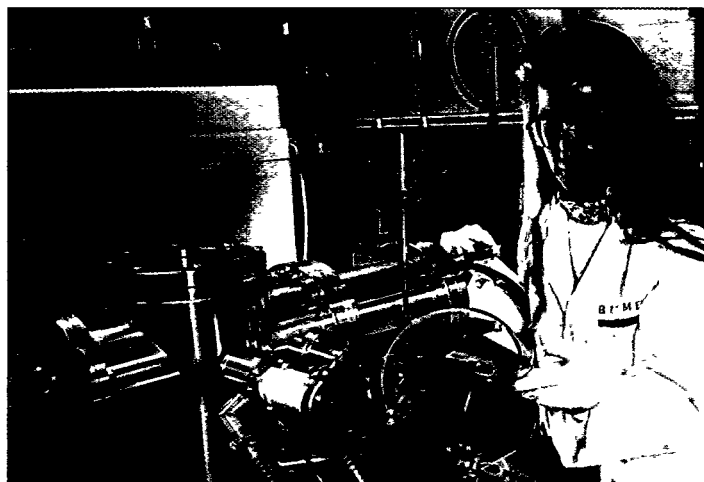
## Characterization

Once a mutagen has been detected, we can characterize it further through a variety of analytical methods (step 4 in Figure 3). The type and sequence of tests depend on our objective for a given mutagen (Figure 6). For example, we can routinely determine the molecular weight through mass spectrometry and study the detailed chemical composition (the number of hydrogen, carbon, and nitrogen atoms) by high-resolution mass spectrometry (HRMS). In mass spectrometry, complex compounds are broken up into ionized fragments, which are accelerated through a magnetic field until they strike a detector. Because the path of an ionized fragment through the

field is determined by its inertia, we can determine the mass of the various ions by their spatial distribution on the detector. Ultraviolet absorbance spectrometry and fluorescence spectrometry are other identification methods that are often combined with chromatography.

Substantially more effort is required if we want to identify a mutagen for the first time. For an unknown compound, we first need information on the atomic composition and the position of atoms in the molecule. This work requires HRMS and nuclear magnetic resonance (NMR) spectra (step 4 in Figure 3)

**Figure 6.** Kathleen Dewhirst combines methods, such as gas chromatography and mass spectrometry or liquid chromatography and mass spectrometry, to characterize the food mutagens in cooked meat. Mass spectrometry allows us to determine the molecular weight of a mutagen.



## The Ames/*Salmonella* Test: A Key to Our Research

Our success in detecting and identifying mutagens in cooked foods is made possible by the interplay of many different types of chemical analyses, including chromatography and mass spectrometry (Figure 3), and biological methods. The Ames test is an exquisitely sensitive biological method for measuring the mutagenic potency of chemical substances. The Ames test by itself does not demonstrate cancer risk; however, mutagenic potency in this test does correlate with the carcinogenic potency for many chemicals in rodents.

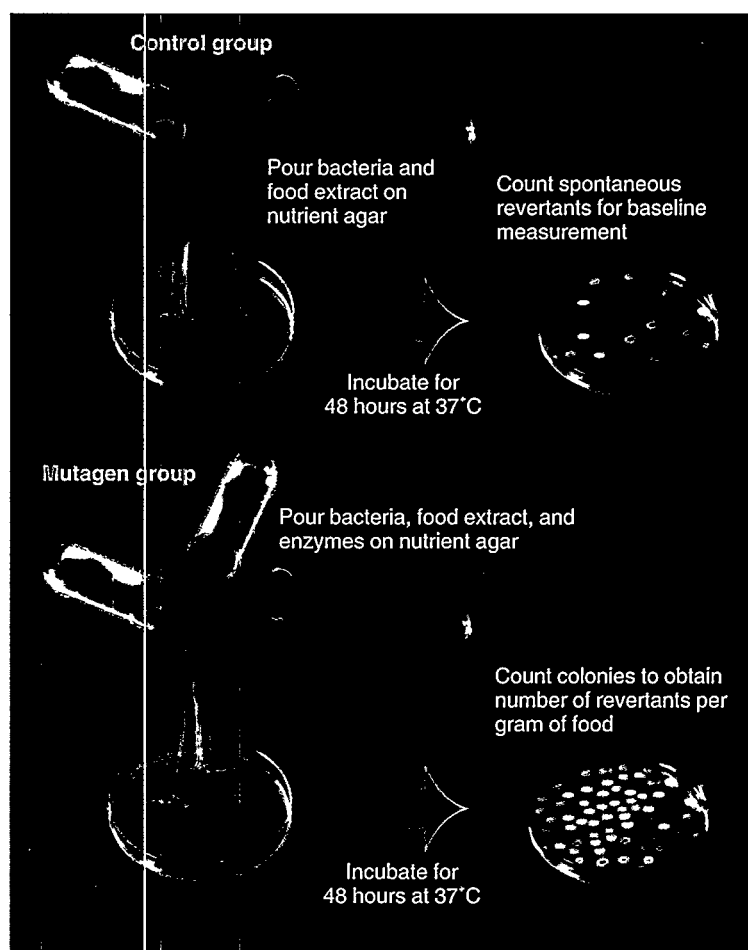
The test was developed in 1975 by Bruce Ames and his colleagues at The University of California at Berkeley. The Ames method is based on inducing growth in genetically altered strains of the bacterium *Salmonella typhimurium*. To grow, the special strains need the amino acid histidine. However, when the chemical agent (mutagen) that is being studied is given to bacteria, some of the altered *Salmonella* undergo mutations. Following a particular type of mutation, the bacteria can grow like the original "wild" (unaltered) strains without histidine. Because the mutant bacteria revert to their original character with regard to the nutrient histidine, they are called "revertants."

The Ames test yields a number—specifically, the number of growing bacterial colonies—which is a measure of the mutagenic activity (potency) of a treatment chemical. This value is often expressed as the number of revertants per microgram of a pure chemical (mutagen) or per gram of food containing that mutagen. Some pure mutagens result in hundreds of revertants per microgram, but many of the substances we have tested from cooked meat produce hundreds of thousands of revertants per microgram. For example, in one strain of bacterium, the PhIP mutagen results in about 2000 revertants per microgram, whereas another cooked food mutagen, IQ, results in 200,000. The illustration at the right shows how a food extract is tested for its mutagenic activity.

In brief, a test begins by placing about 100 million *Salmonella* bacteria in a petri dish containing a nutrient agar lacking histidine. A few bacteria will spontaneously revert in the absence of mutagens. Counting these revertant colonies gives us a baseline against which to check the validity of our complex laboratory procedures. In a separate but essentially identical histidine-deficient petri dish, another batch of

*Salmonella* bacteria are given a mutagen plus mammalian enzymes required for metabolism. (Adding such enzymes gives us a more realistic measure of the mutagenicity of a substance for mammals. The enzymes are typically supplied from liver cell extracts of rats given substances to increase levels of metabolizing enzymes.) Revertant bacteria grow into visible colonies. We simply count the colonies (equal to the number of revertants) after a standard time (48 hours) under standard growing conditions (37°C).

Different strains of altered *Salmonella* bacteria are available for the Ames test. The strains vary in sensitivity to specific mutagens. We used two strains, known as TA98 or TA100, for most of our recent work on fried beef and cooked grains. These strains were generously supplied by Bruce Ames.



together with synthesis of all possible isomers. Isomers are two molecules with the same number of atoms and molecular weight but different structures. NMR spectrometry requires the highest quantity and sample purity of all the analytical methods, but it gives us the most definitive information on chemical structure. The exact chemical structure of a given mutagen can be proven by comparing it with a known standard that is synthesized in the laboratory.

After the physical and chemical properties of a mutagen are known, we can use the information to determine whether that mutagen is present in other types of food. This approach gives us a way to determine the dose of a given compound in our diet and to assess the human risk associated with ingesting that compound.

## The Major Food Mutagens

Table 2 is a summary of the 14 major mutagens that have been identified in at least one type of heated food to date.<sup>5</sup> Notice that some of the compounds have the same molecular weights. For example, 4-MeIQx and 8-MeIQx are isomer pairs and so are Trp-P-2 and Me-AαC. The ultraviolet absorbance spectra of two different compounds may be identical when they are isomer pairs and differ only, for example, in the position of a methyl group on one of the rings. The similar properties of isomers make them difficult to separate using chromatography. Likewise, other analytic tools do not always differentiate between isomers. Additional mutagenic isomers have been synthesized for most of the food mutagens in Table 2. The presence of isomers means that we need to apply several different criteria for identification purposes because no single property, such as an absorbance

spectrum, can uniquely identify all of the mutagens.

The compounds listed in Table 2 are not the only mutagens or carcinogens in food. Researchers at LLNL and elsewhere have identified other biologically active compounds, including additional aromatic amines, nitrosamines, and hydrazines. However,

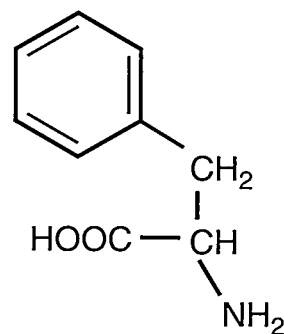
the heterocyclic amines we have been investigating are among the most abundant and potent substances detected to date. Because of their presence in cooked meats that are common in Western diets and their association with certain types of cancer in laboratory animals, they warrant detailed investigation.

**Table 2.** Major mutagens that have been identified in at least one type of heated food, such as fried beef or fish. The names of mutagens first identified at LLNL are in color.

Short name	Chemical name	Molecular weight
Phe-P-1	2-amino-5-phenylpyridine	170
TMIP	2-amino-n,n,n-trimethyl-imidazo[4,5-f]-pyridine	176
AαC	2-amino-9H-pyrido-[2,3-b]-indole	183
Glu-P-2	2-aminodipyrido-[1,2-a:3',2'-d]-imidazole	184
Trp-P-2	3-amino-1-methyl-5H-pyrido[4,3-b]-indole	197
Me-AαC	2-amino-3-methyl-9H-pyrido[2,3-b]-indole	197
IQ	2-amino-3-methyl-imidazo[4,5-f]-quinoline	198
IQx	2-amino-3-methyl-imidazo[4,5-f]-quinoxaline	199
Trp-P-1	3-amino-1,4-dimethyl-5H-pyrido[4,3-b]-indole	211
4-MeIQ	2-amino-3,4-dimethyl-imidazo[4,5-f]-quinoline	212
8-MeIQx	2-amino-3,8-dimethyl-imidazo[4,5-f]-quinoxaline	213
4-MeIQx	2-amino-3,4-dimethyl-imidazo[4,5-f]-quinoxaline	213
PhIP	2-amino-1-methyl-6-phenyl-imidazo[4,5-b]-pyridine	224
4,8-DiMeIQx	2-amino-3,4,8-trimethyl-imidazo[4,5-f]-quinoxaline	227

# Food Mutagens: The Cooking Makes a Difference

L-Phenylalanine



**C**OOKING practices can cause large variations in the total mutagenic activity and in the amount of specific mutagens present in muscle-containing foods. For example, the amount of mutagens in a cooked hamburger from a restaurant varies considerably from one vendor to another and is often several-fold *lower* than that in a hamburger prepared in our laboratory (and presumably at home). The variation has much to do with the details of food preparation, such as cooking temperature and cooking time. It is becoming increasingly clear that there can be many different routes and rates of formation for the different mutagens we are investigating. Thus, a major concern is to identify the precursors and specific reaction conditions that lead to the formation of mutagens during cooking. With this information, it may be possible to devise strategies to reduce or prevent the formation of mutagens.

## Precursors

The reactions that produce mutagens in cooked food are not merely the random coalescence of small fragments. We now know that the heterocyclic amines can be formed from single amino acids (the building blocks of proteins) or proteins when these precursors are heated alone. However, the temperatures required to produce mutagens from amino acids or proteins by themselves are higher than those normally used in cooking.

Muscle meats contain creatine and creatinine. At more typical cooking temperatures (greater than 150°C), one or both of these two precursors react with the free amino acids and, in some cases, sugars to form a series of heterocyclic amines more easily.

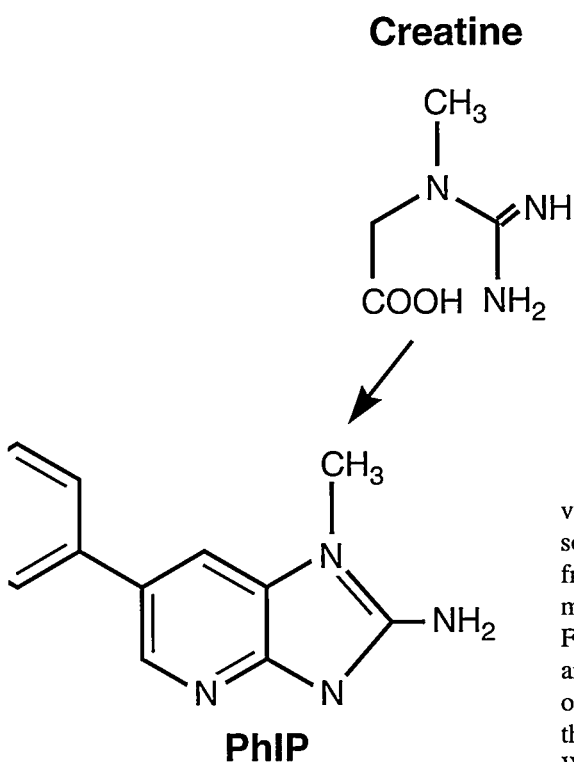
## Modeling the Formation

We have modeled the formation of the important mutagen, PhIP (pronounced

“fip”), starting with the amino acid phenylalanine mixed with either creatine or creatinine, both of which are found naturally in animal muscle. When phenylalanine and creatine are mixed in the proportion normally found in raw beef and dry heated at 200°C, PhIP is produced in amounts comparable to those found after cooking beef. Figure 7 shows the structures of phenylalanine and creatine and of the PhIP molecule that is produced.

We have modeled the formation of several other food mutagens in additional laboratory experiments. For example, the mutagen IQ can be formed with creatine, creatinine, and any of four different amino acids, again suggesting many different possible routes of formation.

Model reactions can help us identify new mutagens as well. In one case, dry heating three precursors known to be present in meat led us to identify a mutagen with two amino and two methyl groups and a molecular weight



**Figure 7.** Modeling the formation of the potent mutagen PhIP. We combined two precursors, phenylalanine and creatine, in amounts naturally found in raw beef. After simple dry heating, PhIP was produced in yields comparable to those we obtain in beef after the cooking process. We have also labeled the two precursors with heavy isotopes to track the incorporation of specific atoms within each precursor molecule into the PhIP molecule. Such work shows unequivocally the source of atoms that make up the mutagenic product.

of 244. However, the presence of this new mutagen in food has not been verified.

## Variations in Cooking

During the actual cooking of meat patties, water and precursors move to the hot, drying contact surfaces of the meat where reactions occur. Such migration, with water serving as the transport vehicle, may account for the concentration of precursors near the meat surface, which we have observed in several investigations. However, different cooking practices can lead to

very different results. For example, some mutagens are produced at all frying temperatures, whereas others may require higher temperatures. Furthermore, when hamburger patties are grilled at high temperature over an open flame, we can account for less than 30% of the mutagens in the meat. When cooking over an open flame, polycyclic aromatic hydrocarbons (different from AIA food mutagens) arise from fat that drips from the meat—this is an entirely different mechanism than those that produce heterocyclic amines from heated muscle tissue itself. Thus, the formation of mutagens is complex and highly dependent on the details of cooking.

## Preparation Principles

Given this complicated picture, what statements about food preparation can we make with any certainty? Here is a summary of some of the important

things we have learned about the cooking process:

- *Food mutagens can be produced both with and without water present.* Early reports suggested that water is essential to produce food mutagens. In later studies, dry heating actually gives a greater percentage of certain types of mutagens compared with aqueous heating. We know, for example, that the mutagen PhIP is formed relatively efficiently in dry heating reactions. We have also found that water tends to inhibit the formation of IQ-type mutagens.
- *Microwave pretreatment of meat can reduce the formation of heterocyclic amine mutagens.* When meat is microwaved for a few minutes, a clear liquid is released, which contains many of the precursors of mutagens. When the resulting liquid is drained off before frying, our studies show that mutagenic activity, as measured by the Ames test, and the amount of

heterocyclic amine are 90 to 95% lower than they are in meat samples that are not pretreated by microwave cooking.<sup>6</sup> The box below discusses this and other methods that have been tested to reduce the formation of mutagens.

• *Different cooking methods produce quite different results.* In general, frying, broiling, and flame grilling muscle meats produce more

heterocyclic amines and mutagenic activity than other methods. Stewing, steaming, and poaching produce little or no mutagenic activity. Roasting and baking have variable responses.

• *Heating temperature is extremely important as is the time of cooking at a given temperature.* Our extensive findings on this important topic are best discussed according to the type of food product.

**Cooked Muscle Meats**

Fried beef patties appear to be the most commonly eaten cooked meat with the highest mutagenic activity. Because of the high intake of fried beef (based on surveys from the U.S. Department of Agriculture and the Department of Health, Education, and Welfare), this food may be the most

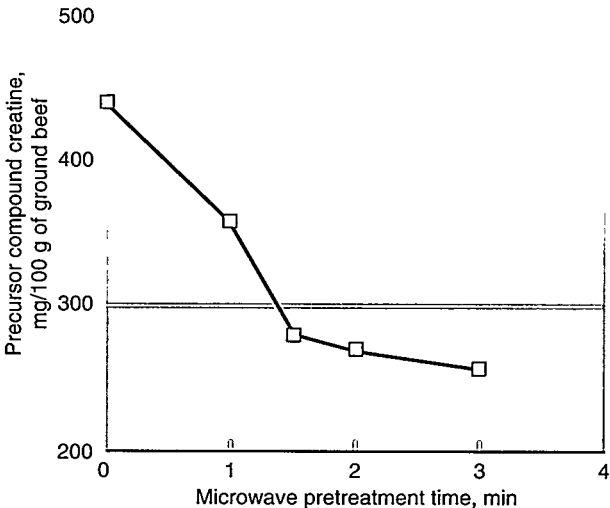
**Can the Mutagens in Cooked Beef Be Reduced?**

Since mutagens were first observed in cooked meats, researchers in several different laboratories have explored various ways to reduce the amounts produced during food preparation. They have found that mutagenic activity can be lowered by adding antioxidants, soy or cottonseed flour, tryptophan, and various other food additives or sugars either alone or with starch. However, none of these additives is widely used commercially or at home. Consumer acceptance and possible changes in the taste, texture, and nutritional content of the cooked food need to be explored further.

Surveys have shown that more than 90% of American homes have a microwave oven. As a practical way to reduce the mutagen and fat content of beef, we studied microwave pretreatment of hamburger for various times before conventional frying either at 200 or 250°C for 6 minutes per side. Our tests used a standard commercial microwave oven set at 80% power for 0 to 3 minutes. The results were dramatic.

We found that the mutagen precursors in hamburger (creatine, creatinine, amino acids, and glucose), water, and fat were reduced up to 30% in the microwaved patties. The graph shows the amount of creatine remaining in the meat as a function of microwave pretreatment times. The fairly rapid loss of water-soluble mutagen precursors and fat takes place in the clear liquid that is released after microwaving. When this liquid is discarded before frying, mutagens in the cooked meat are reduced up to approximately 90% following frying, as shown in the table.

How is it possible that 90% of the mutagens disappear when the precursors are reduced by only 30%? The difference can be explained by second-order reaction kinetics. For example, if two reactants are needed, and each is reduced by 30%, then the product would be reduced by about 50%. If three reactants are required and all are reduced by 30%, the product would be reduced by 70 to 80%. It is also possible that some threshold level of precursor is necessary to produce a mutagenic response or that some inhibitor is formed after microwave pretreatment. As with other techniques to reduce mutagen content, the palatability of food may ultimately govern consumer acceptance of microwave pretreatment.



Measured mutagenic activity, from the Ames test, in beef patties pretreated in a microwave oven and then fried for 6 minutes at 200 or 250°C.

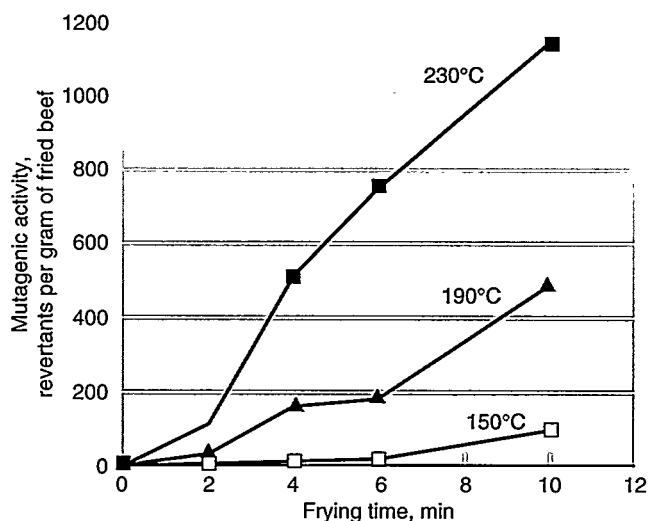
Microwave time, min	Mutagenic activity from the Ames test, revertants per gram	
	200°C	250°C
0	450	1400
1.0	220	369
1.5	130	216
2.0	47	67
3.0	16	41

important single source of heterocyclic amines in the typical American diet. However, several other popular cooked meats, including fish, chicken, and pork, have been shown to produce a potent response in the Ames test.

Of the several different heterocyclic amine mutagens now identified, we wanted to know which ones are most important (that is, most abundant by mass) in cooked muscle meats. To help answer this question, we compared the results of many studies from LLNL and elsewhere. Specifically, we compared the mass percentages of different mutagens in cooked muscle meats, including fried beef, broiled fish, and commercially prepared beef extract. We found that the results were generally consistent among different laboratories even when different analytical methods were used.

First, we did not detect significant levels of three mutagens, Trp-P-1, Trp-P-2, and Glu-P-1, in any of our meat samples. Second, we found that four compounds, IQ, 8-MeIQx, 4,8-DiMeIQx, and PhIP, contribute about 80% of the mutagenic activity in the cooked muscle foods that were studied. Third, we found that PhIP alone can account for a startling 83 to 93% of the mass of these four mutagenic compounds. Clearly, the analysis of PhIP is important because it appears to be, by far, the most abundant heterocyclic amine by mass in commonly eaten cooked meats. Because PhIP is as carcinogenic as the other mutagens, its analysis becomes even more essential.

We examined the production of PhIP and other mutagens in beef at different cooking temperatures and times. The box at the right gives the details on how we prepare our fried beef. Figure 8 shows the mutagenic activity, as measured by the Ames test, of all the mutagens combined in a gram of beef



**Figure 8.** A graph of the mutagenic activity in beef patties fried at three different temperatures. The essential point is that mutagenic activity increases with both frying temperature and time.

## How We Fried the Burgers We Studied

One major difficulty in our dose- and exposure-assessment work is that the content of mutagens can vary widely even in the same kind of food product when it is obtained from different suppliers or prepared by different restaurants. Although the relative amounts of the heterocyclic amines are generally consistent among different studies and laboratories, the precise amount of mutagen per gram in a given cooked food can span a tenfold range.

Hamburgers from fast-food restaurants generally have considerably lower levels of mutagens than those prepared at home. This result is probably due to the fact that many fast-food restaurants cook their meat at moderate temperatures on a grill or over open flames for a short time. Because the meat patties are thin, the products are not generally overcooked.

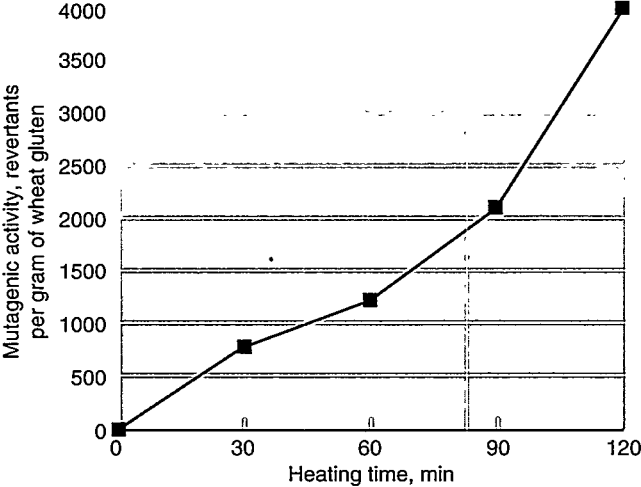
Because food-preparation practices vary, over the years we have attempted to approximate a range of cooking practices that are common in American households. In various experiments, foods were pan fried, oven broiled, baked, boiled, stewed, grilled over coals, or left raw. However, for the studies on red meat reported in this article (see Table 3), we purchased ground beef, sold as containing 15% fat, from a local market. We formed the meat into patties weighing 100 grams (a little less than a quarter of a pound) and fried them on a commercial, electric, stainless-steel griddle for 2 to 10 minutes per side and at surface temperatures of 150, 190, or 230°C. We monitored the griddle surface with a digital probe thermometer. After the meat was cooked, it was homogenized in a blender to produce a uniform sample. Samples were frozen at -4°C until extraction for subsequent testing and analysis.



patty fried at 150°, 190°, and 230°C. We found no detectable heterocyclic amines after frying at 150°C for 2 to 4 minutes. In general, increasing either the temperature or time of cooking (specifically, frying on a solid metal restaurant-type grill) causes a dramatic increase in both the mutagenic activity and the total amount of mutagens

produced, especially PhIP and 8-MeIQx. For the most part, as shown in Table 3, the amount of individual mutagens in fried beef increases proportionately with the cooking temperature. A clear exception to this trend is the compound PhIP, which is produced at much greater concentrations at higher temperatures relative to the other mutagens we have studied. When the cooking temperature and time are increased, the PhIP content of fried beef patties increases nearly exponentially.

**Figure 9.** The mutagenic activity of wheat gluten increases dramatically when heated at 210°C for up to 2 hours. This potent response tells us that one or more highly mutagenic chemicals, still unidentified, are formed with continued cooking at high temperature.



**Table 3.** Content of four different mutagens in fried beef patties (expressed as nanograms of mutagen per gram of beef) cooked at different times and temperatures.

Mutagen	Cooking time per side, min	Cooking temperature of grill, °C		
		150	190	230
IQ	2	none	0.1	none
	4	none	0.1	0.15
	6	0.1	0.45	0.6
	10	0.1	0.85	0.7
8-MeIQx	2	none	0.1	0.7
	4	none	0.25	0.4
	6	0.2	1.3	5.6
	10	0.6	1.3	7.3
4,8-DiMeIQx	2	none	none	1.6
	4	none	0.1	0.15
	6	0.2	0.55	1.2
	10	0.4	1.1	1.0
PhIP	2	none	none	1.3
	4	none	0.15	1.3
	6	0.25	1.9	7.8
	10	1.8	9.8	32.0

Mutagens from Grain?

We also recently used the Ames test to assess the mutagenic activity in many heated foods derived from grain products. Our studies include cooked breads (white, pumpernickel, crescent rolls, and pizza crust), breadsticks, heated flour from many different grain sources, breakfast cereals, graham crackers, and meat-substitute patties after frying. These foods were either tested as purchased without additional cooking (for example, graham crackers and a grain beverage powder) or were cooked according to package instructions. In some studies, we deliberately overcooked the grain products for twice the cooking time at the specified temperature setting to see if the mutagen content would increase with continued cooking, as it does in muscle meats.

Our studies generally demonstrate increased mutagenic activity in grain foods with cooking time, but the exact composition of the food is important. For example, when wheat gluten (the protein in wheat seed) is heated alone at 210°C in a beaker, it shows a potent, time-dependent mutagenic response (Figure 9). Because breadsticks are high in wheat gluten, they also show some activity when heated normally and much higher activity when overcooked.

In fact, the mutagenic activity of breadsticks cooked for double the regular heating time is 20% that of a hamburger fried 6 minutes per side at 210°C. In all cases, overcooking grain foods led to much higher mutagenic activity. Cooked garbanzo bean flour and the grain beverage powder, which we tested as purchased, had relatively high mutagenic activity. Cooked rice and rye flour (containing no gluten), on the other hand, showed no detectable activity, and rice cereal showed very little. Fried tofu (soy bean curd) was not mutagenic, and the measured level of activity in meat-substitute patties (which are made from vegetable proteins) after frying was about 10% or less than that of a beef patty cooked under the same conditions.

Table 4 summarizes the mutagenic activity, as measured by the Ames/*Salmonella* test, for a variety of cooked-grain food products. The results are expressed as mutagenic activity from the Ames test, so they cannot be directly compared with those in Table 3. (Recall that the numbers in Table 3 represent a different measure, namely the content by weight of individual mutagens expressed as nanograms of mutagen per gram of beef.) Because we do not yet know the identity of the mutagens present in cooked grain products, we cannot provide their content by weight. However, to allow for some comparison between cooked grains and meat, we have included the values of mutagenic activity for hamburger cooked for three different times at the end of Table 4.

Overall, the level of mutagenic activity measured in heated nonmeat foods is lower than that in cooked meats. It is important to recognize that the cooked grains we studied lack the creatine and creatinine levels that explain the formation of mutagens in muscle meats during cooking. We are currently investigating the question of

why foods high in gluten are quite mutagenic in the absence of creatine and creatinine. We suspect that the amino acid, arginine, can substitute for the creatine and creatinine precursors found in meat, but it may be a less

**Table 4.** Mutagenic activity of nonmeat food products (expressed as the number of revertants [mutants] per gram from the Ames/*Salmonella* test using the TA98 strain of bacteria). Results for hamburger are given for comparison.

Food sample	Mutagenic activity, revertants per gram
<b>Flour from plant sources heated to 210°C for 60 minutes</b>	
Chemical-grade gluten	1330
Food-grade wheat gluten	970
Commeal	180
Garbanzo flour	1890
Teff flour	420
Rice flour	none detected
Rye flour	none detected
Wheat flour for bread	320
<b>Cooked food samples tested as purchased or cooked as directed</b>	
White bread	2
Pumpnickel	6
Breadsticks	6
Crescent rolls	1
Pizza crust	3
Graham crackers	4
Grain beverage	320
<b>Food samples cooked double the time directed</b>	
White bread	5
Pumpnickel	28
Breadsticks	40
Crescent rolls	4
Pizza crust	8
<b>Toasted breakfast cereals tested as purchased</b>	
Rice-based	2.2
Corn-based	4.4
Wheat-based (various samples)	0 to 8.8
<b>Commercial meat substitutes fried at 210°C for 6 minutes per side</b>	
Gluten-based patties (various samples)	6 to 9.4
Tofu	none detected
Falafel	2.3
Tempeh burger	23
Tofu burger	non detected
Soy-based patties	6.6
Gluten, wheat, teff-based patties (230°C)	30
Hamburger fried at 210°C for 6 minutes per side	220
Hamburger fried at 230°C for 6 minutes per side	800
Hamburger fried at 250°C for 6 minutes per side	1400

efficient mutagen precursor in cooked grain products.

Before we can evaluate the risk associated with cooked grains, we need to determine the mass of mutagens in each food and to identify the specific mutagenic compounds that are present. Except for very low levels of PhIP in wheat gluten (accounting for only 4% of its mutagenic activity), our analysis did not reveal any of the other mutagens found in cooked meat or listed in Table 2. Because the mutagens in cooked grain appear to be as potent as the heterocyclic amines—and such potency is unusual, we suspect that the mutagenic compounds may be new heterocyclic amines similar to those we have found in cooked meats. However, more work needs to be done before we understand the entire picture.

## What About Fumes?

Some studies have suggested the possibility of an increased risk of respiratory tract cancer among cooks and bakers. When foods rich in protein are heated, the fumes that are generated sometimes contain many different known carcinogens, including polycyclic aromatic hydrocarbons and heterocyclic amines. Working with colleagues at the University of California at Davis, we recently studied the mutagenicity of fumes generated when beef is fried at high temperatures.

We collected smoke from cooking by using a special sampling system consisting of a condenser, Teflon filters, and absorbent tubes containing polyurethane foam and a resin. We found that the main volatile compounds generated during frying were alcohols, alkanes, aldehydes, ketones, phenols, and acids. Their presence—we measured 34 different components—may account for much of the toxicity of

fume samples in bacterial tests. Two mutagens, PhIP and A $\alpha$ C, were the most abundant of the heterocyclic amines we measured in smoke, with A $\alpha$ C accounting for 57% of the total weight of mutagens in the recovered samples. However, even though A $\alpha$ C seems to be the most volatile of our quantified heterocyclic amines in smoke, its actual contribution to the mutagenicity of fumes is negligible because its mutagenic potency is lower than that of some other heterocyclic amines in smoke. We also detected significant levels of MeIQx and DiMeIQx.

In a modified Ames test, one that is much more sensitive than our standard assay and uses two different strains of bacteria, the fried meat extracts had 30,700 revertants per gram (see box, p. 16 for a definition of “revertants”), whereas the fumes produced by frying had 10,400 revertants per gram of fried meat. Thus, the fumes generated during the cooking of meat represent about one-third of the mutagenic activity measured in the fried meat itself. It is important to recognize that the amount of mutagens inhaled is very low compared to consuming solid, cooked meat. Nevertheless, the presence of toxic compounds in meat fumes, even at relatively low levels, could pose some risk to food preparers who are exposed to them for long periods over many years.

## Cook to Manage Mutagens

Our research on food mutagens is not specifically designed to generate practical advice for diet- and health-conscious individuals. Many questions remain unanswered in this highly complex field of investigation. Although food mutagens are extremely potent, our preliminary estimates of risk are not alarming primarily because of

their low concentrations in food. Nevertheless, the amount of mutagens ingested can be reduced by choice of diet and by modifying cooking practices.

## Cooking Tips Summary

- Fried beef has very high mutagenic activity. Its popularity suggests that this food may be the most important source of heterocyclic amines in the typical Western diet.
- Most, but not all, of the mutagenic activity in fried beef can be accounted for by known heterocyclic amines. The single mutagen PhIP accounts for most of the combined mass of mutagens in fried beef cooked well-done.
- The fumes generated during the cooking of beef have about one-third the mutagenic activity measured in the fried meat itself. Occupational exposure over long periods could pose some risk, but probably much less than that from consuming the meat.
- The fat content and thickness of meat have little effect on mutagen content, whereas the method and extent of cooking have major effects. Frying, broiling, and barbecuing muscle meats produce more heterocyclic amines and mutagenic activity, whereas stewing, steaming, and poaching produce little or no mutagenic activity. Roasting and baking show variable responses.
- Both cooking temperature and time can be manipulated to minimize the formation of mutagens. Increasing the frying temperature of ground beef from 200 to 250°C increases mutagenic activity about six- to sevenfold. Reducing cooking temperature and time can significantly lower the amounts of mutagens generated and subsequently consumed in the diet.
- Microwave pretreatment of meat, followed by pouring off the clear liquid before further cooking, can substantially reduce the formation of heterocyclic

amine mutagens, even if the meat is cooked well-done.

- Most nonmeat foods, including cooked grain products, contain lower levels of mutagens than cooked meats.

At least in rodents, we know that food mutagens trigger cancer in several different target tissues, such as the liver, colon, breast, and pancreas. In a follow-up installment in *Science and Technology Review*, we will address the health risks to humans that may arise from exposure to heterocyclic amines. For this intriguing part of the story, we will show how these highly toxic compounds can react with the most critical macromolecule of all, DNA. With a connection established between food mutagens, DNA damage, and the potential for cancer, we will then try to make sense of what all the numbers on mutagenic activity and mutagen content in food mean for the average person.

**Key Words:** Ames/*Salmonella* assay; amino-imidazoazaarenes (AIAs); carcinogen; DNA adducts; heterocyclic amines; high-performance liquid chromatography (HPLC); mutagens—airborne, in cooked foods, in fried beef; mutagenicity; 2-amino-1-methyl-6-phenylimidazo[4,5-b]pyridine (PhIP); 2-amino-3-methyl-imidazo[4,5-f]quinoline (IQ); 2-amino-3,8-dimethyl-imidazo[4,5-f]quinoxaline (MeIQx).

#### References

1. B. N. Ames, J. McCann, and E. Yamasaki, "Method for Detecting Carcinogens and Mutagens with the *Salmonella*/Mammalian-Microsomal Mutagenicity Test," *Mutation Research* **31**, 347–364 (1975).
2. T. Sugimura *et al.*, "Mutagen-Carcinogens in Foods with Special Reference to Highly Mutagenic Pyrolytic Products in Broiled Foods," in *Origins of Human Cancer*, H. H. Hiatt, J. D. Watson, and J. A. Winsten, Eds., (Cold Spring Harbor Laboratory, Cold Spring Harbor, New York, 1977), pp. 1561–1577.
3. B. Commoner *et al.*, "Formation of Mutagens in Beef and Beef Extract During Cooking," *Science* **210**, 913–916 (1978).
4. G. A. Gross, "Simple Methods for Quantifying Mutagenic Heterocyclic Aromatic Amines in Food Products," *Carcinogenesis* **11**, 1597 (1990).
5. For a general review of research on food mutagens, see J. S. Felton and M. G. Knize, "Heterocyclic-Amine Mutagens/Carcinogens in Foods," *Handbook of Experimental Pharmacology*, Vol. 94/I, C. S. Cooper and P. L. Grover, Eds. (Springer-Verlag, Berlin, Germany, 1990), pp. 471–502.
6. J. S. Felton *et al.*, "Effect of Microwave Pretreatment on Heterocyclic Aromatic Amine Mutagens/Carcinogens in Fried Beef Patties," *Food Chemical Toxicology* **32** (10), 897–903 (1994). (UCRL-JC-116450)

To view this article with interactive links to these references, visit our Internet homepage at <http://www.llnl.gov/str/str.html>. After August 1, click on references in color for immediate access to additional specific information.

#### For further information contact

James S. Felton (510) 422-5656 ([felton1@llnl.gov](mailto:felton1@llnl.gov)) or  
Mark G. Knize (510) 422-8260 ([knize1@llnl.gov](mailto:knize1@llnl.gov)).

### About the Scientist



**JAMES FELTON** joined the Biomedical Sciences Division of Lawrence Livermore National Laboratory as a Senior Biomedical Scientist in 1976. He is currently the Group Leader of the Molecular Toxicology Group of the Biology and Biotechnology Program at the Laboratory. He received his A.B. in Zoology from the University of California, Berkeley, in 1967 and his Ph.D. in Molecular Biology from the State University of New York at Buffalo in 1973. From 1969 until 1976, he was a Fellow of the National Institute of Health, initially in New York and later in Maryland.

In more than 147 professional publications, James Felton has explored the role of diet in carcinogenesis and mutagenesis. He has been a part of the Laboratory's research on food mutagens since it began 17 years ago and has led it for the past 8 years.

# This Hybrid Vehicle Uses Hydrogen

**R**ECENTLY, the Clinton Administration's Partnership for a New Generation of Vehicles (PNGV) set an automobile fuel efficiency goal of 80 mpg (34 km/L) to achieve responsible energy and environmental conservation. Even before the goal was announced, researchers at LLNL had joined investigators at Los Alamos National Laboratory and Sandia National Laboratories, California, to design and test a hydrogen hybrid concept vehicle that will meet or exceed PNGV guidelines. The hydrogen piston engine they have designed gets mileage equivalent to the 80 mpg of a gasoline-powered vehicle on the combined city-highway driving cycle.

## Why Hydrogen Fuel?

Hydrogen has several features that make it a serious contender as an alternative fuel. It can be produced from various domestic sources, including renewable sources; it can reduce emissions to near zero while maintaining performance; and it can now be safely stored and transported. An immediate motive for moving to hydrogen is its potential to improve urban air quality. In the longer term, such a transition would also benefit the balance of payments and the energy security of the U.S. by reducing dependence on foreign oil.

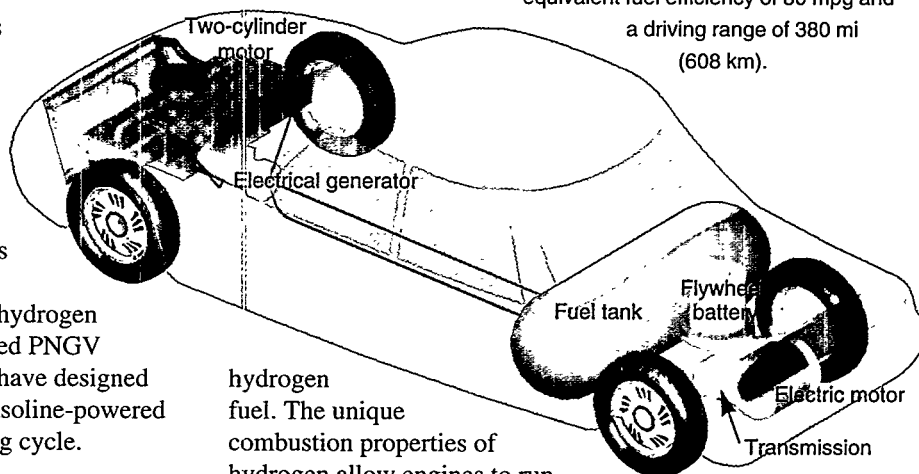
Because hydrogen is a manufactured fuel, it is likely to cost more than fossil fuels for at least several decades. The cost issue means that researchers need to exploit the use of hydrogen fuel in those applications that have the highest leverage or payoff. One obvious application is in transportation. The energy efficiency of today's automobiles is only about 18%.

Despite its many advantages, hydrogen has yet to become a significant transportation fuel, even in advanced countries. Several factors hinder a transition from gasoline to hydrogen, including the absence of available vehicles with engines that can use this resource efficiently and the lack of an adequate distribution infrastructure.

## Hydrogen Fuel Efficiency

Current engine designs have low energy efficiency. Small piston engines (in the range of about 40 kW or 54 horsepower) have not been optimized specifically for

Our conceptual design of a hydrogen hybrid vehicle features a large fuel tank for pressurized hydrogen. It has a gasoline-equivalent fuel efficiency of 80 mpg and a driving range of 380 mi (608 km).



hydrogen fuel. The unique combustion properties of hydrogen allow engines to run leaner and at a higher compression ratio than they do with hydrocarbon fuels. Energy efficiency is a serious problem if consumers want a driving range comparable to that of today's gasoline-powered vehicles. Thus, what we need are high-efficiency drive trains if we are to consider hydrogen seriously as an alternative fuel. Researchers at LLNL are showing that such drive trains are feasible and that hydrogen has a genuine opportunity to compete for the first time in the transportation sector.

Our studies demonstrate that considerable improvement over conventional automobile efficiency can be achieved through a hybrid-electric drive train. In this concept, all the chemical energy of the fuel is converted to electrical energy by means of a piston engine coupled to an electrical generator. The electrical energy can be stored in various ways, including an advanced battery, an ultracapacitor, or an electromechanical battery (EMB), also known as a flywheel battery. Of these three technologies, the EMB is closest to full-scale demonstration. The flywheel battery, which will be the subject of a forthcoming article in *Science and Technology Review*, has an energy recovery efficiency of more than 90% and a long lifetime. Compared to the EMB, today's electrochemical batteries have an energy recovery efficiency of about 70%.

## How the Hybrid Hydrogen Vehicle Works

In the hybrid concept vehicle we are developing (see the illustration), stored electrical energy is extracted as needed by the power demands for accelerating, cruising, and accessories.

The engine does not idle; rather, it shuts down each time the energy-storage device is fully charged. To complete the power train, an electric motor is coupled to the wheels by a single-speed transmission. By turning the electric motor into a generator during braking, our concept vehicle includes the feature of regenerative braking. Thus, kinetic energy returns to the storage device when the brakes are applied.

If the engine/generator in a hydrogen-powered vehicle supplies enough power for a fully loaded vehicle to climb hills at cruising speeds, then it performs much like today's gasoline-powered automobiles. However, if the engine/generator supplies just enough power for average energy consumption, then it can serve as a range extender. The difference in power required for cruising versus hill climbing is about a factor of four. We are designing a fully capable concept car that can cruise and climb hills.

### The Design Team's Challenges

LLNL researchers are working on the technical details of a new hydrogen piston engine with investigators at Los Alamos National Laboratory and Sandia National Laboratories, California. Essentially, LLNL is responsible for the initial system studies, engine design, and combustion kinetics. Los Alamos investigators perform the computational fluid-dynamics modeling (combustion modeling) and integrate this information into our vehicle simulation codes. Researchers at Sandia's Combustion Research Facility then do the engine-performance and emissions testing.

The need for a highly efficient vehicle and power train is driven by the associated problem of onboard storage of hydrogen fuel. Onboard fuel storage is perhaps the single most difficult task associated with our project. Table 1 shows two options we are considering for fuel storage: a cryogenic tank for liquid hydrogen or a high-pressure tank for hydrogen gas. Without increased efficiency, the onboard fuel tank would need to be about three times the volume listed in Table 1 and three times the size shown in the illustration; that is, the tank would become so large as to be impractical. We are applying the hybrid vehicle evaluation code (HVEC) developed at LLNL as a guide to select components that maximize efficiency and thus reduce fuel-tank volume and weight.

HVEC incorporates a wide range of details and complexity. The code calculates power-train dimensions, fuel economy, time to accelerate to 60 mph (96 km/h), hill-climbing performance, and emissions. Our basic premise is that we need to generate electrical energy at efficiencies of about 42%, based on a generator that is 95% efficient and an engine efficiency of about 46%.

Our calculations show that an empty vehicle weighing 2508 lb (1140 kg) (see Table 1 for additional specifications)

**Table 1.** Some basic specifications and calculated performance for the LLNL hydrogen hybrid vehicle.

<b>General description</b>	
Five-passenger, engine-flywheel hybrid vehicle	
Hydrogen internal combustion engine	
Cryogenic or pressurized hydrogen-storage system	
Principal accessory: air conditioning	
<b>Selected vehicle characteristics</b>	
Vehicle empty total weight	2508 lb (1140 kg)
Power-train weight	578.6 lb (263 kg)
Fuel-tank capacity	10.45 lb (4.75 kg)
	of hydrogen
Liquid-hydrogen tank volume @ 100 psi	28 gal (106 L)
Liquid-hydrogen tank weight @ 100 psi	79 lb (36 kg)
Pressurized-hydrogen tank volume @ 5000 psi	62 gal (235 L)
Pressurized-hydrogen tank weight @ 5000 psi	141 lb (64 kg)
Aerodynamic-drag coefficient	0.24
Rolling-friction coefficient	0.007
<b>Electric motor</b>	
Maximum continuous torque	100 N · m
Maximum speed motor	11,000 rpm
Transmission efficiency	95%
Hydrogen-engine efficiency	46%
<b>Calculated performance</b>	
Combined 55% urban, 45% highway gasoline-equivalent mileage	~80 mpg (34 km/L)
Driving range	380 mi (608 km)
Time to reach 96 km/h (60 mph)	9.7 s

would have a combined EPA urban/highway mileage of about 80 mpg (expressed as gasoline-equivalent fuel efficiency). Such a vehicle would require only about 10.45 lb (4.75 kg) of hydrogen for a driving range of 380 miles (608 km). For perspective, a kilogram of hydrogen has nearly the same energy content as a gallon of gasoline. Thus, our hydrogen-powered vehicle is extremely energy-efficient and has emissions equivalent to those of electric vehicles when the emissions from power plants are included. And its gasoline-equivalent fuel efficiency of 80 mpg meets the goal set by PNGV.

With current technology, we believe that a general-purpose, low-emission, long-range vehicle that uses a hydrogen internal combustion engine is now possible. Such a vehicle could become competitive in the marketplace if hydrogen production and distribution issues are addressed. These issues are being studied at the Laboratory and will be the subjects of *Science and Technology Review* articles in the future.

**For further information contact**  
**J. Ray Smith (510) 422-7802**  
**(jrsmith@llnl.gov).**

# Modeling for More Accurate Weather Forecasts

**W**EATHER is fickle, especially in the varied terrains and microclimates of the western United States. California and the other western states thrive or languish with their water supply, as the pendulum swings between drought and deluge. All too often, "average" precipitation is merely an artifact of arithmetic. Complicating the picture is the fact that the area receives its year's supply of water during the winter, and water for the dry summer must come almost entirely from reservoir storage and mountain snowpacks. At the start of each winter, everyone—water district official, fire fighter, ski resort operator, homeowner—wants to know if rainfall and snowfall will be above or below average. Accurate assessments of wintertime precipitation are particularly important for regional water management agencies as they attempt to manage reservoir capacity and balance the water demands of agricultural, industrial, urban, recreational, and environmental interests. In addition, since water supply is a limiting factor for urban and industrial development, regional planners are increasingly concerned about the effect of global climate change on local water resources.

Numerical simulation using general circulation models (GCMs) is one of the most important tools for understanding global climate and for projecting long-term climate change. Great strides have been made in recent years to couple models of atmospheric, terrestrial, and oceanic processes to provide more complete climate simulations. However, because of their coarse spatial resolution (typically 100 km), it is difficult to apply these GCMs directly to regional forecasts. In California, for example, precipitation is closely related to topographic features (e.g., the Coastal Range, the San Francisco Bay) with spatial scales of less than 100 km, too small to be resolved by a GCM. Increasing the resolution of the GCMs to provide regional simulations is beyond the capabilities of present and envisioned computational resources.

Mesoscale models, nested within GCMs, are being developed to assess regional climate. As part of an effort to investigate regional-scale atmospheric flow, precipitation, and hydrology over various time scales and spatial resolutions, four LLNL researchers—Jinwon Kim, Norman Miller, Donald Ermak, and William Dannevik—have developed the Coupled Atmosphere-Riverflow Simulation (CARS) system. The

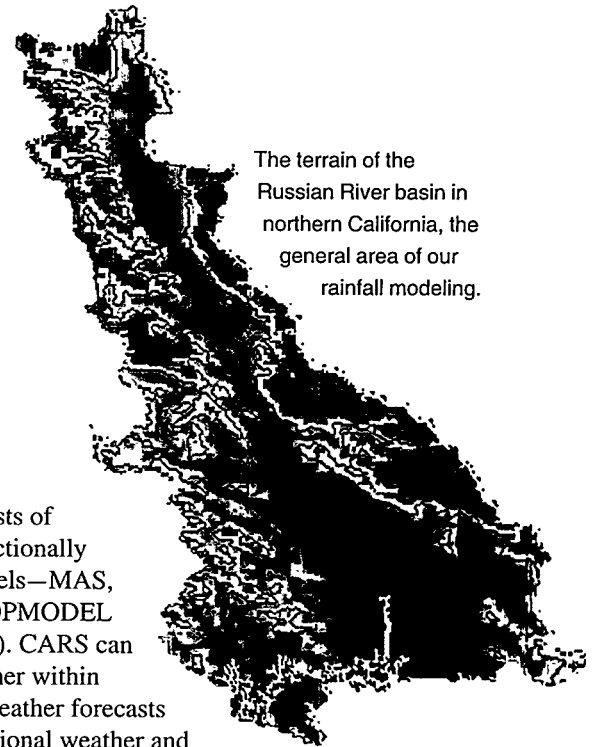
system consists of three unidirectionally coupled models—MAS, LAS, and TOPMODEL (see Figure 1). CARS can be nested either within large-scale weather forecasts to predict regional weather and river flow or within global climate analysis data to assess regional climate and long-term water resources.

The Mesoscale Atmospheric Simulation (MAS) model was developed jointly by LLNL and the University of California at Davis.<sup>1</sup> It models atmospheric processes, including those involved in storms, from which it computes local precipitation, wind velocity, and other atmospheric variables. MAS computes rainfall and snowfall separately (using a bulk cloud microphysics scheme<sup>2</sup>), an important capability because mountain snowpacks are major sources of summertime water for the western states.

The Land Analysis System (LAS) is a system of codes taken in part from software developed by the U.S. Geological Survey<sup>3</sup> and combined with numerous other codes and scripts developed at LLNL. It provides land surface characteristics (such as flow directions, topographic slopes, water channels, and hydrological characteristics) for individual watersheds, based on digital elevation data provided by LLNL's Atmospheric Release Advisory Capability group. The areas and locations of the LAS watersheds are nested within the grid points of the MAS model.

TOPMODEL is a hydrology model, developed originally in 1979 at Lancaster University, England,<sup>4</sup> and enhanced and expanded over the years. LLNL's version of TOPMODEL takes the watershed-averaged precipitation and atmospheric variables from MAS together with the land surface characteristics from LAS to simulate surface and subsurface hydrology and river flow for individual watersheds.

The series of storms that struck Northern California in January 1995 provided an effective test of CARS's ability to



make accurate short-term forecasts of precipitation and flooding. Between January 7 and January 11, three strong storms hit California. Several areas experienced extensive flooding as soils became saturated after the second and third storms came ashore. The Russian River basin was among the hardest-hit areas, with an estimated \$800 million in flood-related damage.

Large-scale forecast data (80-km resolution) from the National Weather Service were used as input to the CARS system, and MAS simulations (20-km resolution) were run producing precipitation fields for all of California for this time period. MAS's ability to calculate rainfall and snowfall separately was essential for predictions of river flow, since snowfall does not immediately affect river flow.

California's complex terrain can cause considerable differences in the precipitation received by areas only a few miles apart. As a result, accurate estimates of local precipitation are essential for accurate estimates of river flow in mountainous areas. To illustrate this dependence, CARS computations were made for the area-averaged daily rainfall for the entire Russian River basin (approximately 7000 km<sup>2</sup>) and compared with calculations of the Hopland watershed (a smaller area, about 660 km<sup>2</sup>) within the Russian River basin, north of the Hopland gauge station. The simulated daily rainfall for the two areas differs by factors of two to three (Figure 2a).

To evaluate CARS's ability to predict river flow and flooding, simulated precipitation values for the Hopland watershed were compared with the observed precipitation values for the first 12 days of January (which were used by the National Weather Service's California-Nevada River Forecast Center to model river flow). CARS

successfully simulated the amounts and timing of rainfall over the Hopland watershed, except on January 10, where the model overestimated precipitation by a factor of two (Figure 2b). Upon further examination, this overestimation was found to have resulted from excessive amounts of water vapor flux in the input data for the CARS simulation, clearly demonstrating the dependence of regional predictions on accurate large-scale data.

Figure 2c plots the observed and simulated daily-mean river flow volume of the Russian River at the Hopland gauge station from January 1 through January 12. CARS simulated the river flow rate to within 10% accuracy during the flood stage. The overestimation of modeled river flow for January 11 was due in part to the overpredicted rainfall for January 10, as noted above. For the low flow periods before flooding, simulated river flow exceeded the observed river flow mainly

because of uncertainties in the initial water content of the soils, a difficult variable to simulate.

These successful predictions of extreme precipitation and river flow demonstrate the applicability of the CARS system to short-term, local weather forecasting. Such modeling will not replace human weather forecasters; rather, modeling can provide another type of data to assist forecasters. As Jinwon Kim, one of CARS's developers, remarks, "The value of front-line forecasting is that the forecasters have the experience to interpret data from various sources. Our goal is to create a modeling system that can help improve the accuracy of a forecast and the time span for which it is valid."

Improving short-term weather forecasts is but one step toward the long-range goal of understanding and predicting global climate change and its regional impacts. Having successfully simulated the Russian River situation, CARS's developers are moving ahead on several fronts.

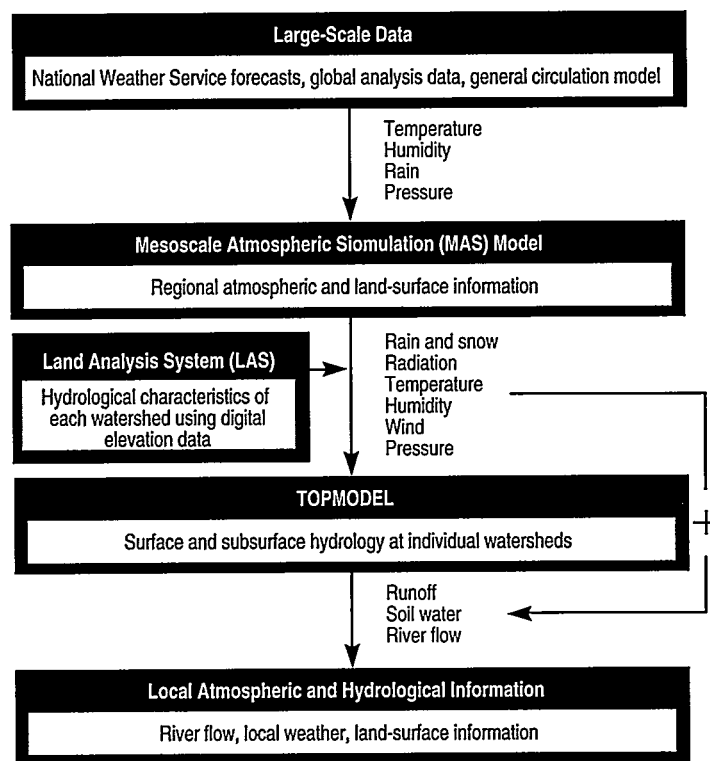
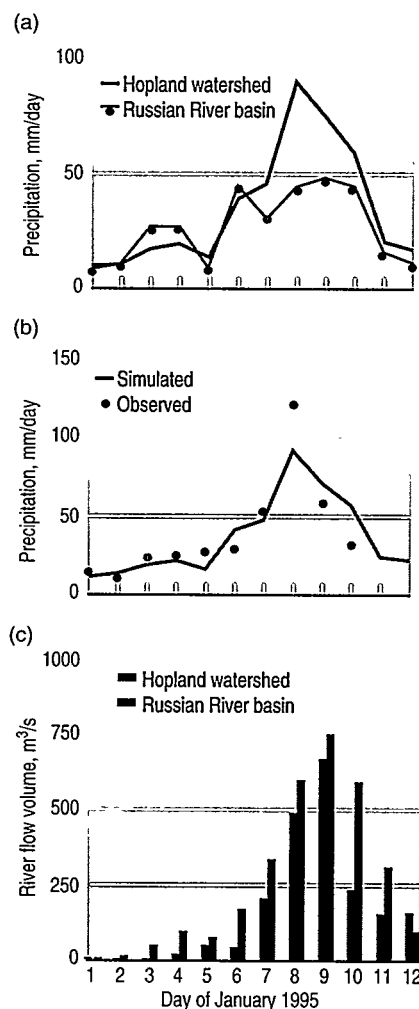


Figure 1. The CARS system. The MAS model takes large-scale input data and telescopes it down to simulate local precipitation and atmospheric variables, which are then averaged over individual watershed areas (obtained from LAS). LAS also computes topographic characteristics for the watersheds. TOPMODEL uses the precipitation and atmospheric variables simulated by MAS together with the land surface properties determined by LAS to compute river flow and hydrology for the specific watersheds.



Figure 2. (a) Simulated precipitation for the entire Russian River basin and for the Hopland watershed. (b) Observed and simulated precipitation for the Hopland watershed of the Russian River basin. (c) Observed and simulated river flow at the Hopland gauge station on the Russian River. The CARS simulations are in generally good agreement with observed precipitation and river flow, the discrepancies (overestimations) arising in large part from inaccuracies in the large-scale input data.



CARS's hydrology simulation model is being extended to include other major river systems in California, specifically the inflow to Lake Shasta, the Feather River, and the American River. This expansion will make it possible to use CARS for simulating local weather and river flows over northern California's major watersheds.

In collaboration with the National Weather Service, the CARS system is being used for experimental weather prediction for the southwestern United States. Simulations are also being run to test CARS's ability to assess water resources over seasonal, multiyear, and decadal time scales, to model the effect of such global phenomena as El Niño on regional climate, and to determine the effects of pollutants such as carbon dioxide and aerosols on climate change.

#### References

1. J. Kim and S.-T. Soong, "Simulation of a Precipitation Event in the Western United States," *Proceedings of the 6th Conference on Climate Variations* (January 1994), pp. 407-410. (UCRL-JC-114412)
2. H.-R. Cho *et al.*, "A Model of the Effect of Cumulus Clouds on the Redistribution and Transformation of Pollutants," *Journal of Geographical Research* **94** (ND10), 12,895-12,910 (1989).
3. S. K. Jenson and J. O. Domingue, "Extracting Topographic Structure from Digital Elevation Data for Geographic Information System Analysis," *Photogrammetric Engineering and Remote Sensing* **54** (11), 1593-1600 (1988).
4. K. J. Beven and M. J. Kirkby, "A Physically Based, Variable Contributing Area Model of Basin Hydrology," *Hydrological Science Bulletin* **24**, 43-69 (1979).

To view this article with interactive links to these references, visit our Internet homepage at <http://www.llnl.gov/str/str.html>. After August 1, click on references in color for immediate access to additional specific information.

#### For further information contact

Jinwon Kim (510) 422-1848 ([kim1@llnl.gov](mailto:kim1@llnl.gov)),  
 Norman Miller (510) 423-1283 ([norm@llnl.gov](mailto:norm@llnl.gov)),  
 Donald Ermak (510) 423-0146 ([ermak1@llnl.gov](mailto:ermak1@llnl.gov)), or  
 William Dannevik (510) 422-3132  
 ([dannevik1@llnl.gov](mailto:dannevik1@llnl.gov)).

*Each month in this space we report on the patents issued to and the awards received by Laboratory employees. Our goal is to showcase the distinguished scientific and technical achievements of our employees as well as to indicate the scale and scope of the work done at the Laboratory.*

## Patents

Patent issued to	Patent title, number, and date of issue	Summary of disclosure
Anthony M. McCarthy	"Method for Forming Silicon on a Glass Substrate" U.S. Patent 5,395,481 Issued March 7, 1995	A method by which single-crystal silicon microelectronics may be fabricated on glass substrates at low temperatures.
Michael W. Droege, Paul R. Coronado, and Lucy M. Hair	"Method for Making Monolithic Metal Oxide Aerogels" U.S. Patent 5,395,805 Issued March 7, 1995	A method in which a metal alkoxide solution and a catalyst solution are prepared separately and reacted to produce transparent, monolithic metal oxide aerogels of varying densities.
Earl R. Ault and Terry W. Alger	"Metal Vapor Laser Including Hot Electrodes and Integral Wick" U.S. Patent 5,396,513 Issued March 7, 1995	A specifically designed electrode and wicking associated with the plasma tube of metal vapor lasers.
Anthony M. McCarthy	"Method of Forming Crystalline Silicon Devices on Glass" U.S. Patent 5,399,231 Issued March 21, 1995	A method for fabricating single-crystal silicon microelectronic components on a silicon substrate and transferring them to a glass substrate.
Thomas C. Kuklo	"Kinematic High Bandwidth Mirror Mount" U.S. Patent 5,400,184 Issued March 21, 1995	An adjustable high bandwidth mount for mirrors used in optical systems. The mount is adjustable along two perpendicular axes.
Steven T. Mayer, James L. Kaschmitter, and Richard W. Pekala	"Aquagel Electrode Separator for Use in Batteries and Supercapacitors" U.S. Patent 5,402,306 Issued March 28, 1995.	An electrode separator formed of aquagel with electrolyte in its pores for electrochemical energy storage devices.

## Awards

**Dana Isherwood**, the Laboratory's legislative analyst, and **Dick Post**, a Laboratory Associate in the Energy Directorate, were elected fellows of the **American Association for the Advancement of Science (AAAS)** in recognition of their scientifically or socially distinguished efforts on behalf of the advancement of science or its applications.

**Ralph Jacobs**, director of New Technology Initiatives in the Laser Program at LLNL, was elected fellow of the **American Physical Society**. He was honored for "fundamental and applied contributions to the research and development for a wide variety of gaseous, solid, and liquid laser media."

**Tom McEwan** and his "radar on a chip" were honored in April by the **Federal Laboratory Consortium** for excellence in transferring technology from a laboratory to private business. The Consortium is an association of Department of Energy research facilities that assists the U.S. public and private sectors in using technologies developed by federal research laboratories.

Secretary of Energy **Hazel O'Leary** presented Laboratory representatives with the **Management and Operation Contractor of the Year Award** on

March 31 in recognition of its outstanding achievement in providing substantial contracting opportunities for small businesses. She cited our socioeconomic program assisting small, women- and minority-owned business in securing procurement contracts with the Laboratory as the best of its kind in the DOE complex.

The **1994 E. O. Lawrence Award** has been awarded to **Michael Campbell**, head of the Laboratory's lasers program, and **John Lindl**, scientific director for Inertial Confinement Fusion for distinguished leadership in helping to propel laser-driven inertial confinement fusion to the forefront of physics research. The award was established in 1959 in memory of Ernest O. Lawrence to recognize outstanding contributions in the field of atomic energy. Dr. Campbell was also the winner of the **1995 Edward Teller Medal**. This award was established in 1989 to commemorate Teller's contributions to fusion energy.

The **Northern California Section of the American Institute of Chemical Engineers** has named a hazardous explosives cleanup process developed at the Laboratory as **Project of the Year**. The award cited the project's principal investigators **Ravi Upadhye**, **Bruce Watkins**, **Cesar Pruneda**, and **Bill Brummond**. The process uses molten salt to safely dispose of waste explosives and explosive-like materials.

## Research on Food Mutagens

Of all the toxic substances produced during cooking, the most important are likely to be the heterocyclic amines. For 17 years, LLNL researchers have been identifying these food mutagens, measuring their abundance in cooked foods typical of the Western diet, working to understand how they can trigger malignant tumors in laboratory animals that have been exposed to high mutagen doses, and estimating the importance of human exposures. Our success is largely a function of the interdisciplinary approach we have taken to quantify food mutagens and to study their biological effects. LLNL investigators were the first to identify five of the most important mutagens in heated food, including PhIP and DiMeIQx. We have shown that fried beef may be the most important single source of heterocyclic amines in the human diet and that PhIP accounts for most of the combined mass of

mutagens in fried beef cooked well-done. Most nonmeat foods contain low or undetectable levels of these types of compounds, but some cooked protein-containing foods, such as those high in wheat gluten, have significant levels of unknown aromatic amine mutagens. Cooking time and temperature significantly affect the amounts of mutagens generated. For example, reducing the frying temperature of ground beef from 250 to 200°C lowers the mutagenic activity by six- to sevenfold. Microwave pretreatment of meat and discarding the liquid that is formed also greatly reduces the formation of heterocyclic amines. Our related work on dose and risk assessment will be described in a forthcoming article.

■ **Contacts:**

**James S. Felton (510) 422-5656 ([felton1@llnl.gov](mailto:felton1@llnl.gov)) or  
Mark G. Knize (510) 422-8260 ([knize1@llnl.gov](mailto:knize1@llnl.gov)).**