

**PROCEEDINGS  
SIXTEENTH WORKSHOP  
GEOTHERMAL RESERVOIR ENGINEERING**

**January 23-25, 1991**



**Henry J. Ramey, Jr., Roland N. Horne,  
Paul Kruger, Frank G. Miller,  
William E. Brigham, Jean W. Cook  
Stanford Geothermal Program  
Workshop Report SGP-TR-134**

## **DISCLAIMER**

**This report was prepared as an account of work sponsored by an agency of the United States Government. Neither the United States Government nor any agency Thereof, nor any of their employees, makes any warranty, express or implied, or assumes any legal liability or responsibility for the accuracy, completeness, or usefulness of any information, apparatus, product, or process disclosed, or represents that its use would not infringe privately owned rights. Reference herein to any specific commercial product, process, or service by trade name, trademark, manufacturer, or otherwise does not necessarily constitute or imply its endorsement, recommendation, or favoring by the United States Government or any agency thereof. The views and opinions of authors expressed herein do not necessarily state or reflect those of the United States Government or any agency thereof.**

## **DISCLAIMER**

**Portions of this document may be illegible in electronic image products. Images are produced from the best available original document.**

## RESERVOIR RESPONSE TO INJECTION IN THE SOUTHEAST GEYSERS

Steve Eney<sup>1</sup>, Kathy Eney<sup>2</sup>, John Maney<sup>3</sup>

1. Northern California Power Agency
2. Calpine Corporation
3. Unocal Geothermal

### ABSTRACT

A 20 megawatt (MW) increase in steam flow potential resulted within five months of the start-up of new injection wells in the Southeast Geysers. Flow rate increases were observed in 25 wells offset to the injectors, C-11 and 956A-1. This increased flowrate was sustained during nine months of continuous injection with no measurable decrease in offset well temperature until C-11 was shut-in due to wellbore bridging. The responding steam wells are located in an area of reduced reservoir steam pressure known as the Low Pressure Area (LPA). The cause of the flowrate increases was twofold 1) an increase in static reservoir pressure and 2) a decrease in interwell communication.

Thermodynamic and microseismic evidence suggests that most of the water is boiling near the injector and migrating to offset wells located "down" the static pressure gradient. However, wells showing the largest increase in steam flowrate are not located at the heart of the pressure sink. This indicates that localized fracture distribution controls the preferred path of fluid migration from the injection well. A decrease in non-condensable gas concentrations was also observed in certain wells producing injection derived steam within the LPA.

The LPA project has proven that steam suppliers can work together and benefit economically from joint efforts with the goal of optimizing the use of heat from The Geysers' reservoir. The sharing of costs and information led directly to the success of the project and introduces a new era of increased cooperation at The Geysers.

### BACKGROUND

Water injection into The Geysers geothermal field first began in 1969 with the start-up of well SB-1 in the Pacific Gas and Electric (PG&E) Units 1-6 area. Since 1982 throughout the Geyser field, approximately 450 billion pounds of water or 28% of the mass of steam produced has been reinjected with the remainder being evaporated in the power plant cooling process. Overall, injection has proven to be an environmentally safe method of disposing of the plant effluent since the injectate is contained in the reservoir and does not contaminate surface water (Crockett and Eney 1990). The steamfield

operators have experienced both positive and negative results with water injection (Barker et. al. 1989). Experience shows that water injection can lessen the rate of steam flow decline at The Geysers.

There are few examples in the literature of beneficial long-term reservoir response to injection at The Geysers due to the often subtle or delayed effects of injection on offset steam well flowrate. However, through the use of advanced decline curve analysis techniques, decreased rates of steam flow decline have been determined. For example, Ripperda and Bodvarsson (1987) found a slowing of the rate of steam decline on selected Geysers' wells "probably" due to injection which began in the "immediate vicinity" just prior to the change in flow behavior. In the Southeast Geysers, K. Eney (1989) found lower flowrate declines on producers located offset to an injector which were in part attributable to "water injection support". In both studies, type curves were used to aid in the decline curve analysis.

Further evidence that water injection can supplement steam production is based on tracer tests. Deuterium and tritium are two tracers used at The Geysers to estimate the injection derived component of steam production and to track fluid movement across the reservoir. In a 1975 tritium tracer test in well SB-1, approximately 18% of the injected tritium was recovered from 20 offset steam wells demonstrating that the injectate is boiling and being produced as steam within a few weeks of injection (Gulati, 1978). In the Southeast Geysers, a 1989 tritium test of NCPA's well Y-5 showed tritium recovery within one day of injection. Also, a total of 27% of the tritium was recovered within seven months from 33 steam wells. Beall, Eney and Box (1989) demonstrated that injectate recovery as steam peaked between 35% and 50% in the Southeast Geysers. These calculations were based on the elevated deuterium content of the injection derived steam. In a similar study for the Unocal-NEC-Thermal (U-N-T) joint venture, Gambill (1990) stated that the mass of injectate produced as steam in 1988 was roughly equivalent to 65% to 80% of the mass of liquid injected during that year.

### LOW PRESSURE AREA INJECTION PROJECT

High flowrate declines in the Southeast Geysers, starting in 1986, led to studies to augment

condensate injection with excess fresh water as a means to improve reservoir performance. In order to better understand the role of water injection in the Southeast Geysers, a joint injection project was conceived to quantify the ability of the reservoir to support and benefit from augmented water injection.

An agreement between NCPA, Calpine, and U-N-T delineated a general study area and called for the exchange of specific reservoir, geochemical, and geologic data within the Low Pressure Area (LPA) in August, 1989. In addition, U-N-T's microseismic monitoring system was expanded into the NCPA and Calpine leaseholds. The joint study area (Southeast Geysers Study Area) encompasses approximately 2,000 acres, and includes parts of PG&E's Units 13, 16, 18 and NCPA's Plants 1 and 2 (Figure 1). The LPA was defined as the area enclosed by the 220 psig (wellhead) contour based on the January, 1989, isobaric map. It contains approximately 790 acres. Figure 2 shows the outline of the LPA, the wellhead location of the data trade production wells, the mid-point of steam entries on the six injection wells, and the new microseismic stations within the study area.

NCPA and Calpine Corporation agreed to jointly deliver condensate to NCPA's C-Site. Well C-11 was chosen as the joint injector due to both its location within the heart of the low pressure area near the common lease line and its reservoir characteristics which were considered ideal to maximize the return of injectate as steam. A schematic of the joint injection system is shown in Figure 3. Note that there are currently eight wells available for injection of condensate from the combined NCPA and Unit 13 plant areas with two additional wells proposed for conversion to injection. This reflects the philosophy that water needs to be distributed throughout the reservoir and injected at relatively low rates.

#### STUDY AREA RESERVOIR DESCRIPTION

The two primary formations which host the geothermal reservoir within the Southeast Geysers Study Area are 1) the Franciscan Greywacke, which is a metamorphosed sandstone and 2) a silicic intrusive known as the Felsite, which underlies the entire study area. Greenstone segments within the

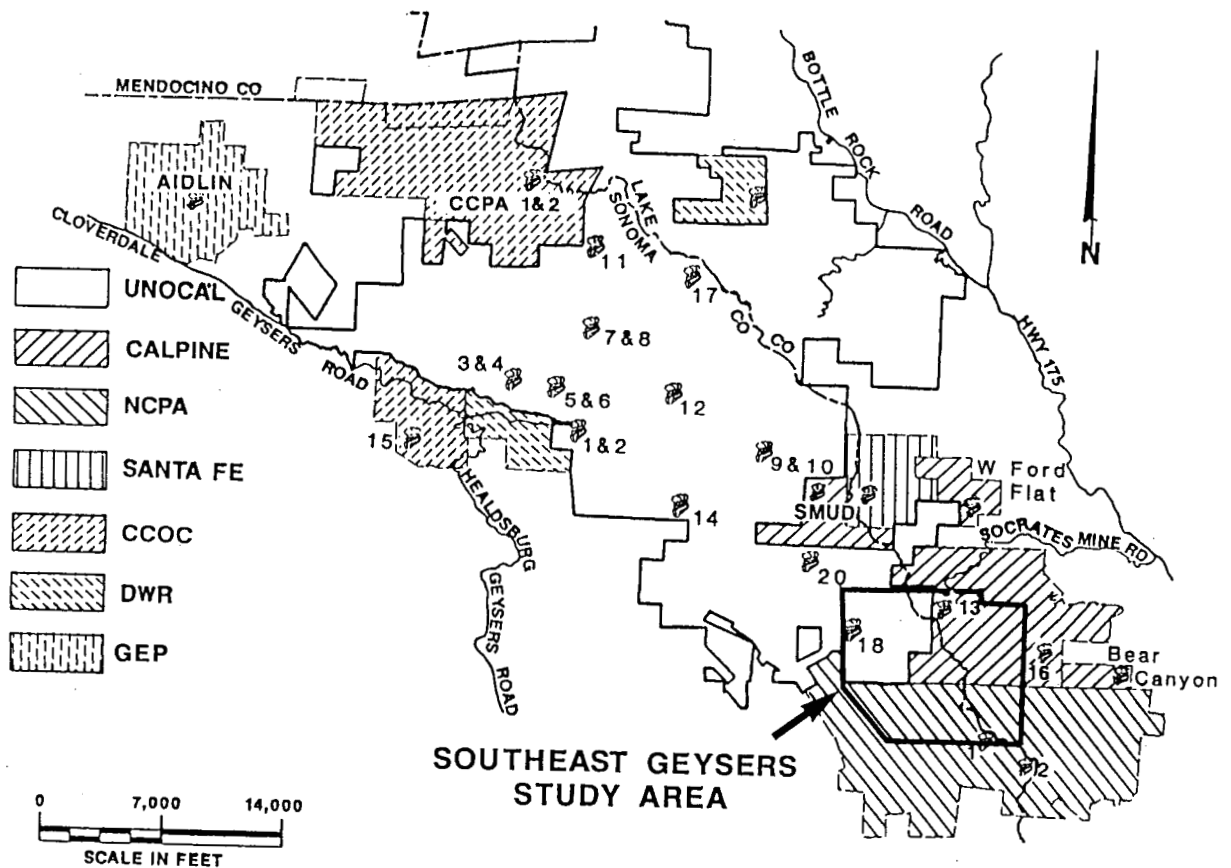


FIGURE 1: Geysers Development map.

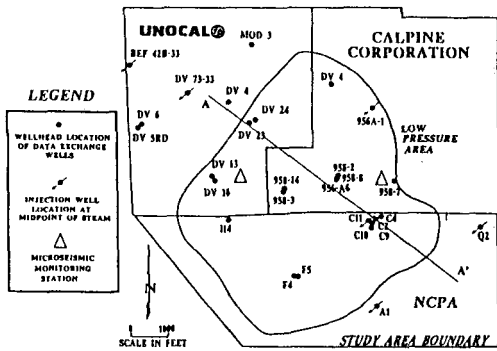


FIGURE 2: Southeast Geysers Study Area.

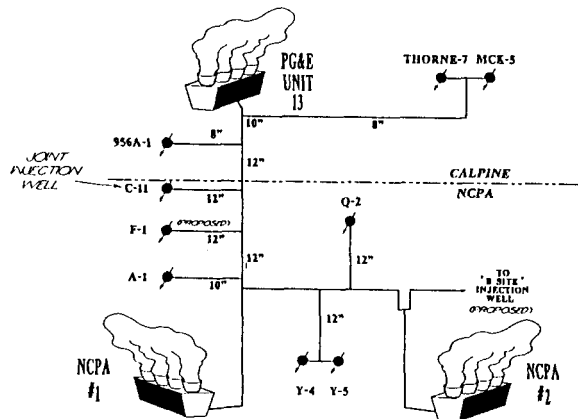


FIGURE 3: Injection schematic.

greywacke are a secondary host rock and can be of importance in specific areas. The main reservoir greywacke is overlain by a heterogeneous mixture of rock types which are normally set behind casing. Matrix permeability in these rocks is very low and extensive fracturing of these rocks has resulted in a high secondary permeability. Reservoir permeability-thickness product is a direct function of the size and distribution of fractures and faults open to steam flow and ranges between 20,000 and 200,000 md-ft. Although fracturing is extensive throughout the study area (especially within the LPA), the distribution is relatively random with large blocks of the formation containing no major steam-bearing fractures. The lower reservoir boundary appears to be gradational in nature, with fractures becoming more widely spaced with increasing depth. Producing wells offset the study area in all directions except to the southwest which is bounded by a fault zone. (Thompson and Gunderson 1989, Beall and Box 1989, Thompson 1989, Smith 1990, Bodvarsson et. al. 1989, Maney et. al. 1990)

The reservoir geology of the study area is distinguished from other portions of The Geysers by the relatively shallow depth of the felsite and the felsite's role as a major reservoir rock especially in

the northwest (Unit 18) area. The NW-SE trending felsite intrusion is shallowest within the study area where it reaches sea-level in the middle of Unit 18, and deepens to approximately 4300 feet below sea-level near injection well C-11 (Figure 12). The felsite and greywacke are in hydraulic communication due to their similar static pressure gradient.

### SELECTION CRITERIA

Through an ongoing reservoir testing and monitoring program, sufficient data were gathered to evaluate the spatial distribution of reservoir and fluid properties which led to the eventual selection of the LPA as an ideal target for water injection. C-11 was chosen as a joint injector due to both its location along the common lease boundary and the reservoir parameters listed in Table 1. These parameters are documented in a series of technical papers presented at the 1989 GRC Annual Meeting (See References).

TABLE 1  
Parameters Used To Select Injection Targets

Parameter	Source	Value
Reservoir Pressure	Based on PBU tests and P/T/S surveys	<220 psig-Feb89
Reservoir Temperature	Based on P/T/S surveys and geothermometers	> 450° F
Reservoir Enthalpy	Based on P/T/S surveys	> 1220 Btu/lbm
Fracture Distribution (Permeability)	Drilling history and P/T/S surveys	multiple entries (> 5 per well)
Amount of Injection Derived Steam	Based on Deuterium concentration	< 10 %

The most important criteria for selecting the LPA as an injection target was evidence of reduced or absent liquid saturation while substantial heat remained trapped in the reservoir rock. This data was supplied by a Pressure-Temperature-Spinner (P/T/S) logging program conducted over a three year period, which supplied a spatial and temporal evolution of both enthalpy and superheat within the LPA. (Eneedy, K.L. 1989).

Downhole superheat (SH) of up to 80°F was measured on well 956A-2 (Figure 4) in May, 1988, after eight years of production. As this well is completed in the LPA, the elevated SH indicates that the high rate of mass withdrawal is causing this portion of the reservoir to dry-out. Additional evidence of reduced water saturation within the LPA was the increasing trend of downhole enthalpy with time. A modified Mollier diagram, shown in Figure 5, traces the progression of the calculated enthalpy and shows that the LPA wells range between 1220 and 1250 Btu/lbm which is higher than the undisturbed portions of the reservoir (≈1205 Btu/lbm). Also, measured downhole temperatures of 450°F or greater indicate little or no temperature depletion. Other factors such as high flowrate

decline and elevated boron concentrations also confirmed that the LPA was a prime target for liquid injection.

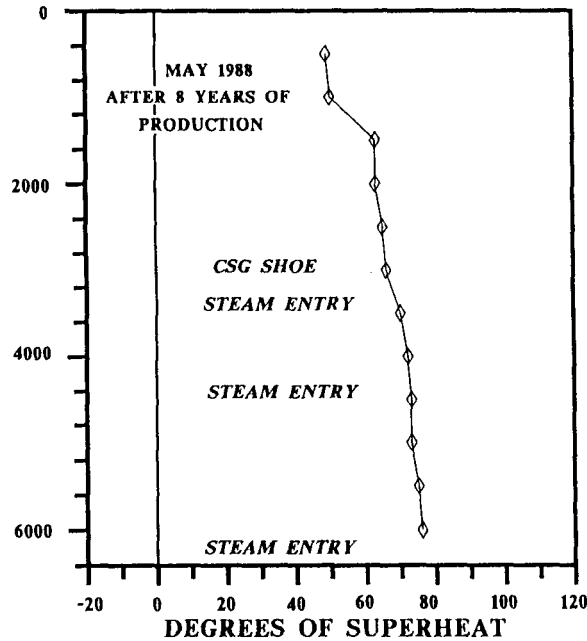


FIGURE 4: Superheat vs. Depth Calpine Well 956A-2.

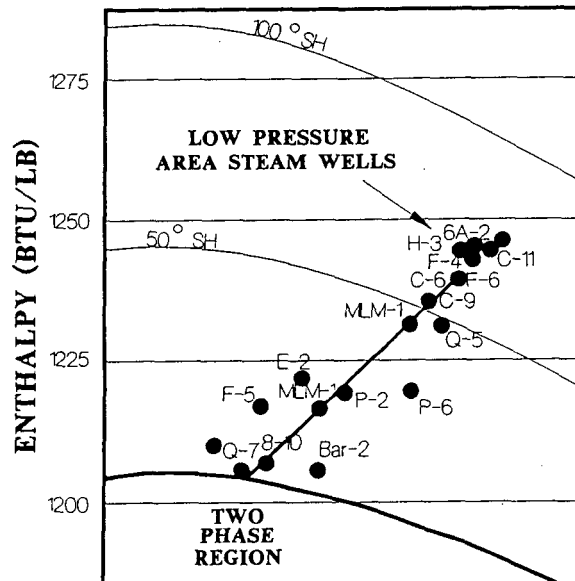


FIGURE 5: Modified Mollier Diagram Flowing steam enthalpy Southeast Geysers steam wells.

OPERATIONAL EXPERIENCE

During the next nine months subsequent to September 20, 1989, approximately two billion pounds of condensate were injected at a nominal rate of 800 GPM (Figure 6). However, C-11 was shut-in on June 4, 1990 due to thermal breakthrough with

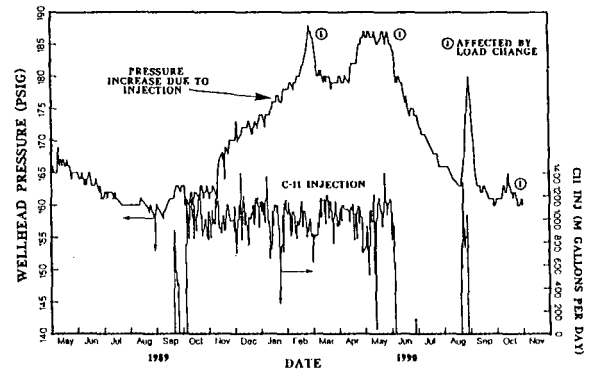


FIGURE 6: F-4 observation Well pressures with C-11 injection Rate.

production well C-8. It was later found that a shallow bridge had formed in the C-11 wellbore causing condensate to flow through a shallow fracture system to the offset production well. The injector remained shut-in until a drilling rig cleaned out the well and a casing liner was installed. Injection resumed on August 21, 1990. However, the casing liner hanger failed nine days later and the well remained shut-in until a second workover was successfully completed. Injection resumed at a nominal rate of 800 GPM on November 19, 1990.

C-11, the first joint injection well utilized at The Geysers, experienced no unusual operational problems due to its combined use by both Calpine and NCPA. Injection rates were held fairly constant thanks to the cooperation of both the NCPA and Calpine field operators (Figure 6). Liquid level surveys indicated that at moderate rates of 800 GPM or less, injection was confined to fractures located in the greywacke-greenstone reservoir between depths of 3800 and 5600 feet. Injection below that depth was limited by a bridge in the wellbore. The installation of the casing liner solved the thermal breakthrough problem with offset steam well C-8.

RESERVOIR RESPONSE

The reservoir responses to the start-up of injection into the LPA consisted of changes in various reservoir properties including static pressures, flowrates, microearthquake response, geochemical changes, and rock temperatures.

Static Pressure Increase

The observed reservoir pressures within the LPA increased in many of the offset NCPA and Calpine production wells due to injection into C-11 and 956A-1. Reservoir pressure on observation well F-4, which is located 2400 feet to the southwest of C-11, increased from 158 to 163 psig (+5 psi) within ten days and to 180 psig (+22 psi or 14%) within five months (Figure 6). This higher pressure level was sustained until C-11 was shut-in on June 4, 1990. The wellhead pressure then gradually declined to near the pre-injection level. Despite the five month

shut-in of injector C-11, F-4's shut-in pressure of 162 psig in October 1990, was 15 psi higher than the extrapolated decline without injection. The sustained pressure support is a long-term benefit obtained from injection.

Finally, during August 1990, after only eight days of injection, F-4's pressure increased from 165 psig to the previously observed maximum of 180 psig. The August pressure response was accelerated when contrasted with the initial pressure response. This effect most likely occurred because of a higher starting water saturation due to previous injection.

A second reservoir pressure response due to injection into C-11 was a decrease in interwell communication between the NCPA and Calpine steamfields. Specifically, during a seven week overhaul of Unit 13, prior to LPA injection, the shut-in pressure of F-4 increased from 168 to 191 psig or 23 psi (Figure 7). Immediately following plant start-up, the well's pressure started to decline and within five weeks returned to the original level. In contrast after seven months of continuous injection, only a 6 psi increase was measured following a four week Unit 13 curtailment associated with a plant cycling test. The elevated pressure level was maintained approximately two weeks following the unit's start-up. Also, the pre-injection outage response of 23 psi is similar to the 22 psi increase due to injection into C-11.

Analysis of the static pressure data indicates that water injection causes a change in the local reservoir boundary condition. Prior to injection, this area behaved like a closed, depleting system. Over short time periods, the post-injection behavior is like that of a constant pressure source system. The pressure support is supplied by the volumetric expansion of flashed injection water.

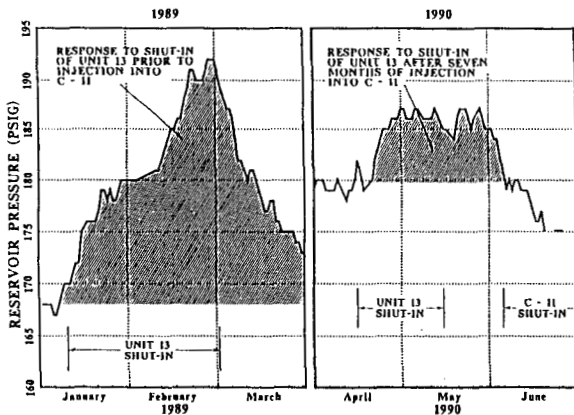


FIGURE 7: F-4 observation well pressure during offset unit shutdown.

Individual Well Flowrate Response

Increases in individual well steam flowrate potentials ranging between 5,000 and 30,000 lbm/hr

were observed from 25 wells located within the LPA after five months of injection. The well mid-points of steam and magnitude of the increases are shown on Figure 8. Although all the wells are within the pressure sink, those showing the largest increases are not in the center of the sink but are northwest and southwest of C-11. This indicates that the flow of flashed steam is controlled regionally by the static pressure distribution and locally by fracture orientation.

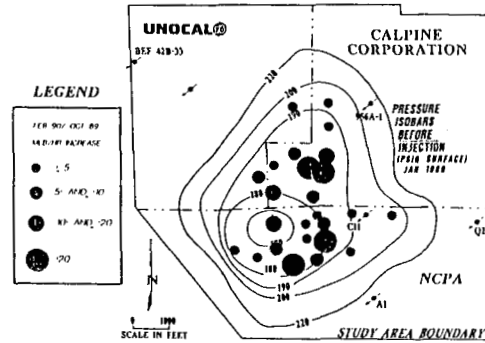


FIGURE 8: Location of wells with flowrate - increases due to injection.

A typical flowrate decline curve for a responding well located on each of the three leases is shown on Figure 9. Calpine's 958-14 and NCPA's F-7 are both located roughly 1,800 feet from C-11, to the northwest and southwest respectively. Both wells started to increase in flowrate by late October, only one month after the start of injection into C-11 and continued to increase for the next five months at similar incline rates of 58 and 61% respectively. Calpine's 958-14 increased from 95,000 to 125,000 lbm/hr or 30,000 lbm/hr. NCPA's F-7 increased from 22,000 to 30,000 lbm/hr or 8,000 lbm/hr.

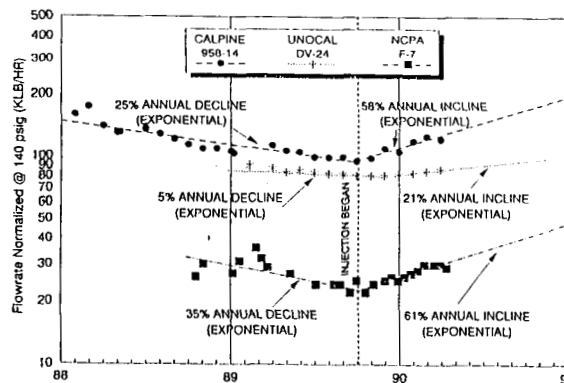


FIGURE 9: Historical monthly flowrate

U-N-T's DV-24 is located in the southeast corner of Unit 18 approximately 3200 feet northwest of C-11. In late November 1989, DV-24 production flowrates began responding favorably to injection from C-11

(Figure 9). For six months prior, the production history of the well indicated a steady decline rate of 5% per year. From December, 1989, through April, 1990, production flowrates in DV-24 increased 7% from 81,000 lbm/hr to approximately 87,000 lbm/hr.

**Total Flowrate Response**

An increase in total steam flowrate potential equivalent to 20 MW or 360,000 lbm/hr was measured from 23 NCPA and Calpine producers offset to the new injection wells after five months. Figure 10 shows a plot of the combined flowrate potential increase at 140 psig for 14 NCPA wells along with the monthly production from those wells and injection into C-11. Flowrate inclined at an annual exponential rate of 56% for five months. In comparison, the combined flowrate potential of seven responding Calpine wells inclined at a similar 54% annual exponential rate (Figure 11). The overall reservoir benefit obtained from injection into C-11 and 956A-1 has been split almost evenly between the NCPA and Calpine steamfields. U-N-T has observed less injection response due to the greater distance between C-11 and U-N-T producers.

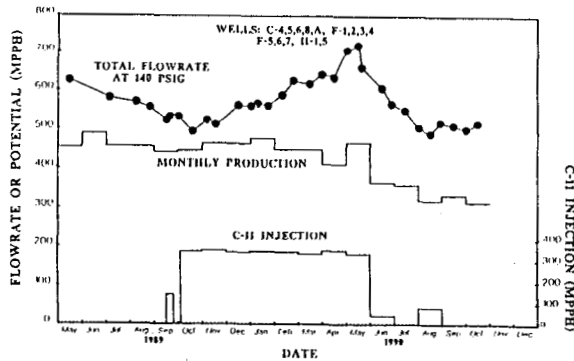


FIGURE 10: Total flowrate of NCPA wells, offset to injector C-11.

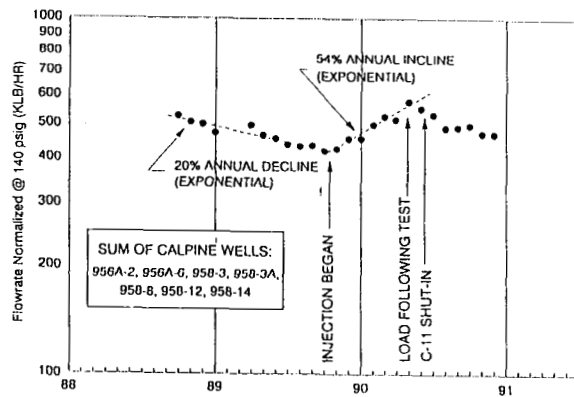


FIGURE 11: Total flowrate of Calpine wells offset to injector C-11.

The material balance of LPA incremental injection and production indicates that injection into both C-11 and 956A-1 brought about the observed flow response. The percent contribution from each injector is not clear at this time. An increase of 2.4 billion pounds of steam was measured during the first year of injection. This was greater than the mass injected into either well and approximately 54% of the total injected mass into both. Following the shut-in of C-11, 956A-1's continued injection induced relatively lower production declines from offset wells (Figure 11). According to geochemical studies, these offset wells also continued to produce injection derived steam.

**Microearthquake Response To C-11**

The microearthquake (MEQ) cross-section shown in Figure 12 was constructed on azimuth N 53° W through C-11 to show the seismic response to injection at C-11. All the MEQ's located horizontally within 1,000 feet of the section line were included. The data indicate that there were very few events in the area prior to the start of extended injection in early October 1989. After the start of injection, however, a MEQ cluster formed in an area close to the wellbore of C-11 between approximately 2,600 and 4,600 feet below sea level. Stark (1990) interpreted similar injection-related MEQ clusters on U-N-T leases as rough images of the presence of injected liquid. Therefore, Figure 12 would suggest that the injected fluids boil a short distance from the wellbore. In contrast, Stark's U-N-T examples showed MEQ clusters deeper and further away from the associated injection wellbore.

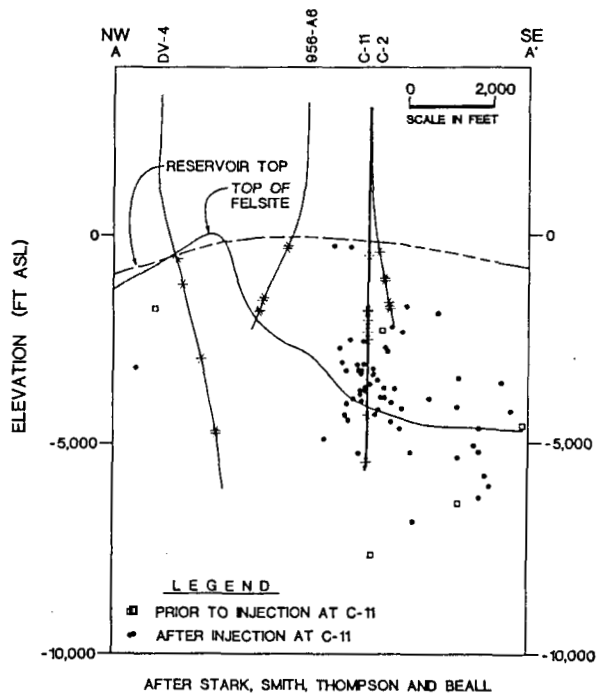


FIGURE 12: Microearthquake cross-section, Azimuth N 53° W through C-11, September, 1989 - April 1990.

Based on the distribution of microseismicity, the majority of the liquid injected into the greywacke appears not to migrate deep into the felsite. Lower fracture density within the felsite may be the limiting factor. Although boiling appears to be primarily in the greywacke, wells completed in both zones produce injection derived steam.

Geochemical Response

Additional evidence that injectate was boiling and being produced as steam is provided by shifts in both deuterium and non-condensable gas concentration. Figure 13 plots the deuterium values for two LPA wells and the injectate composition for C-11. NCPA's well H-4, near the edge of the LPA approximately 3,500 feet from C-11, continued to produce steam without an injection derived steam (IDS) component throughout the injection period. However, NCPA's well F-6, located approximately 1,500 feet from C-11, produced an IDS component within two months of injection start-up to C-11. The IDS component ranged between 65 and 88% during the injection period. After the shut-in of C-11 in June 1990, IDS component returned to near pre-injection levels.

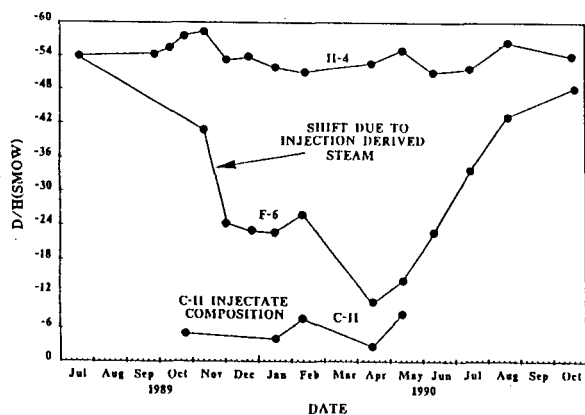


FIGURE 13: Deuterium shifts selected wells in low pressure area.

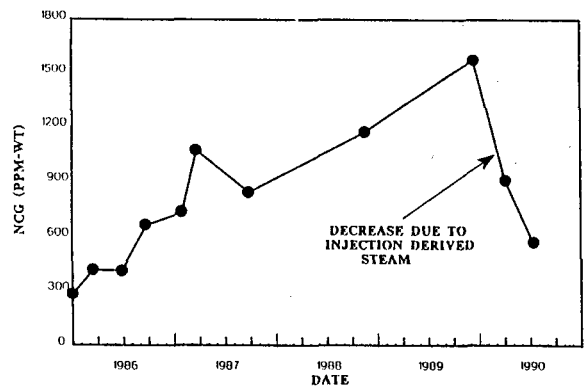


FIGURE 14: Well F-5, non-condensable gases vs. time.

Selected wells which produced injection derived steam within the LPA showed a decrease in non-condensable gas (NCG) concentrations. NCG concentrations had been increasing throughout the Southeast Geysers since 1986 (Maney et al., 1990). Figure 14 shows this increasing NCG trend in NCPA's well F-5 since 1986 through the start-up of C-11 in late 1989 which peaked at 1550 ppm. Soon after injection began, NCG concentrations returned to a mid-1986 value of 590 ppm.

Steam Temperatures

No decrease in reservoir temperatures were measured on steam wells offset to the injectors during the nine month injection period. This indicates that only a fraction of the total available heat capacity of the rock has been extracted. Figure 15 compares the downhole temperature profiles for well F-6 from pre- and post- injection P/T/S surveys. F-6 was stated in the previous section to have produced up to 88% IDS. The 1990 downhole temperatures measured seven months after injection are essentially the same as the 1986 pre-injection temperatures.

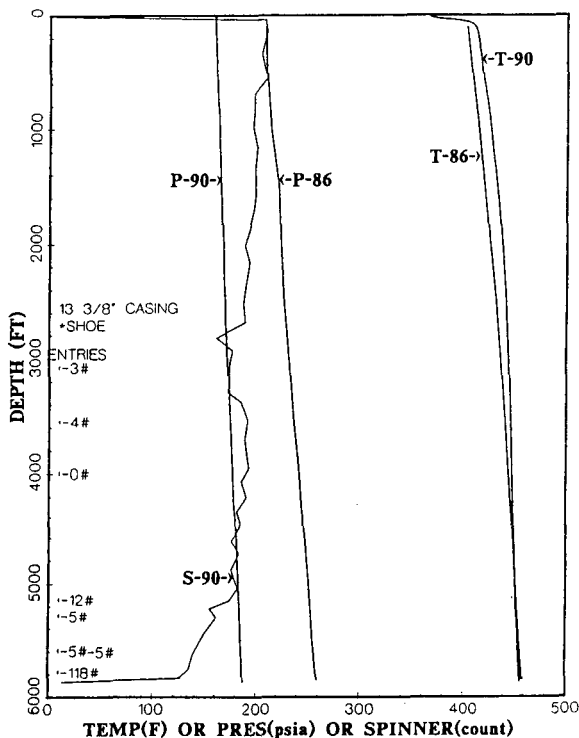


FIGURE 15: Pressure and temperature comparison, well F-6 1986 and 1990

The only measured decrease in downhole temperature occurred in the injector, C-11. Figure 16 contrasts the temperature profiles for C-11 just prior to the start of injection and ten weeks following the C-11 shut-in. A 60°F decrease was measured at the primary greywacke injection zone between 3,800 and 6,000 feet.

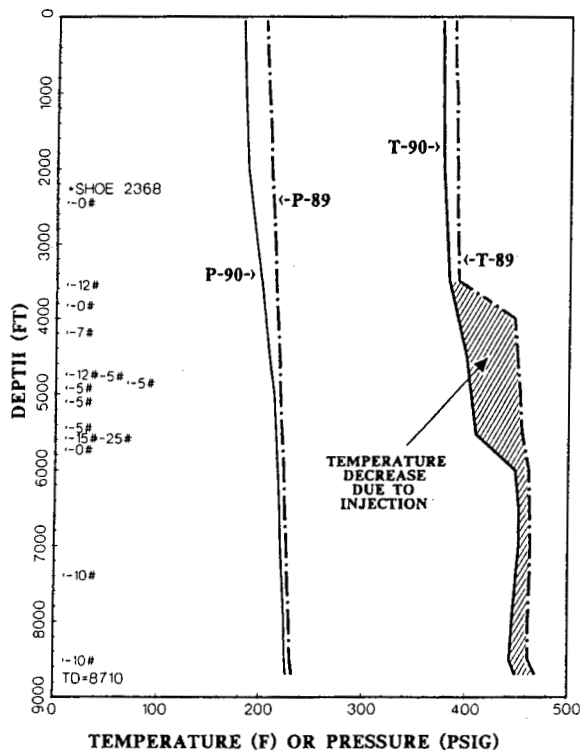


FIGURE 16: C-11 temperature and pressure survey on 9/20/89 - 1/2" vent, survey on 8/17/90 - 3" vent.

### CONCLUSIONS

The start-up of new injection wells in the Southeast Geysers resulted in a 20 MW increase in steam flow potential within five months from 25 wells offset to the injectors. These wells behave as if a constant pressure source has been introduced into the reservoir.

The Low Pressure Area Injection Project demonstrated that a properly planned injection project can "mine" or extract additional heat from the rock and positively impact both reservoir pressure and flowrate while minimizing thermal breakthrough to offset wells. These results suggest that further development of fresh water sources to enhance injection may well extend the life of the resource. Those injection projects found to be economically favorable would benefit the electrical consumer by increasing and extending power plant generating capacity.

### ACKNOWLEDGEMENTS

The authors would like to thank the members of the Southeast Geysers Study Committee who added both their insight to the data analysis and support for the concept of data sharing including: Unocal's Ben Barker, Mitch Stark, Ken Riedel, Kim Legg, Phil Molling, Debbie Wheeler; NCPA's Dick Yarter, Bill Smith, Steve Jones; Calpine's Tom Box, Joe Beall, Chris Dunkle. Graphics by Bud Schroeder, Ed Keppel. Manuscript was prepared by Judy Hathorn.

### REFERENCES

- Barker, B.J., M.A. Bryan, K.L. Riedel, (1989), "Geysers Reservoir Performance", GRC Meeting trans., Vol.13.
- Beall, J.J., S.L. Enedy, W.T. Box, (1989), "Recovery of Injected Condensate as Steam in the South Geysers Field," GRC Meeting trans., Vol.13 pg 351-358.
- Beall, J.J., W.T. Box, (1989), "The Nature of Steam Bearing Fractures in the South Geysers Reservoir", GRC Meeting trans., Vol.13 pg 441-448.
- Crockett, C.L., K.L. Enedy, (1990), "A Walk Through Time: Injection In The Southeast Geysers," paper presented at Underground Injection Practices Council Meeting, October 29, 1990, Santa Rosa, California.
- Enedy, K.L. (1989), "Downhole Enthalpy and Superheat Evolution in Geysers Steam Wells," GRC Meeting trans., Vol.13, pg 377-382.
- Enedy, K.L., (1989), "The Role of Decline Curve Analysis at the Geysers," GRC Meeting trans., Vol.13, pg 383-392.
- Enedy, S.L., M.A. Grande, J.L. Smith, (1990), "A Case History of Steamfield Development, Reservoir Evaluation and Power Generation in the Southeast Geysers," GRC Bulletin, October 1990, pg 232-248.
- Gambill, D.T., (1990) "The Recovery of Injected Water as Steam at The Geysers," GRC Meeting trans., Vol.14, pg 1655-1660.
- Gulati, M.S., S.C. Lipman, C.J. Stroebel, (1978), "Tritium Tracer Test at The Geysers," GRC Meeting trans., Vol. 2, pg 237-239.
- Kline, C., S.L. Enedy, (1989), "Effect of Condensate Reinjection on Steam Chemistry at The Geysers Field," GRC Meeting trans., Vol.13, pg 409-414.
- Maney, J.J., R.C. Thompson, B.A. Koenig, (1990), "The Geysers Unit 18, A Case History, GRC Geysers Monograph Proposed.
- Ripperda, M., G.S. Bodvarsson, (1987), "Decline Curve Analysis of Production Data From The Geysers Geothermal Field," Proceedings, Twelfth Workshop on Geothermal Reservoir Engineering, Stanford University, pg 23-27.
- Stark, M.A., (1990), "Imaging Injected Water in The Geysers Reservoir Using Microearthquake Data," GRC Meeting trans., Vol.14. pg 1697-1703.
- Thompson, R.C., (1989), "Structural Stratigraphy and Intrusive Rocks At The Geysers Geothermal Field," GRC Meeting trans., Vol.13, pg 481-485.
- Thompson, R.C., R.P. Gunderson, (1989), "The Orientation Of Steam-Bearing fractures at the Geysers Geothermal Field", GRC Meeting trans., Vol.13 pg 487-490.