

Cross-Roll Flow Forming of ODS Alloy Heat Exchanger Tubes For Hoop Creep Enhancement

*Quarterly Technical Progress Report
October 1st 2005 – December 31st 2005*

Principal Investigator:

Bimal K. Kad

Department of Structural Engineering

University of California-San Diego, La Jolla, CA 92093-0411

Tel: (858) 534 7059; Fax: (858) 534-6373; e-mail: bkad@ucsd.edu



Issue Date April 10th 2006

National Energy Technology Laboratory
Contract Award: DE-FC26-03NT41985

For

**Development of Technologies and Capabilities for
Developing Coal, Oil and Gas Energy Resources**

This report was prepared as an account of work sponsored by an agency of the United States Government. Neither the United States Government nor any agency thereof, nor any of their employees, makes any warranty, expressed or implied, or assumes any legal liability or responsibility for the accuracy, completeness, or usefulness of any information, apparatus, product, or process disclosed, or represents that its use would not infringe privately owned rights. Reference herein to any specific commercial product, process, or service by trade name, trademark, manufacturer, or otherwise, does not necessarily constitute or imply its endorsement, recommendation, or favoring by the United States Government or any agency thereof. The views and opinions of authors expressed herein do not necessarily state or reflect those of the United States Government or any agency thereof.

Cross-Roll Flow Forming of ODS Alloy Heat Exchanger Tubes For Hoop Creep Enhancement

Abstract

Mechanically alloyed oxide dispersion strengthened (ODS) Fe-Cr-Al alloy thin walled tubes and sheets, produced via powder processing and consolidation methodologies, are promising materials for eventual use at temperatures up to 1200°C in the power generation industry, far above the temperature capabilities of conventional alloys. Target end-uses range from gas turbine combustor liners to high aspect ratio (L/D) heat exchanger tubes. Grain boundary creep processes at service temperatures, particularly those acting in the hoop direction, are the dominant failure mechanisms for such components. The processed microstructure of ODS alloys consists of high aspect ratio grains aligned parallel to the tube axis, a result of dominant axial metal flow which aligns the dispersoid particles and other impurities in the longitudinal direction. The dispersion distribution is unaltered on a micro scale by recrystallization thermal treatments, but the high aspect ratio grain shape typically obtained limits transverse grain spacing and consequently the hoop creep response. Improving hoop creep in ODS-alloy components will require understanding and manipulating the factors that control the recrystallization behavior, and represents a critical materials design and development challenge that must be overcome in order to fully exploit the potential of ODS alloys.

The objectives of this program are to 1) increase creep-strength at temperature in ODS-alloy tube and liner components by 100% *via*, 2) preferential cross-roll flow forming and grain/particle fibering in the critical hoop direction. The research program outlined here is iterative in nature and is intended to systematically i) examine and identify post-extrusion forming methodologies to create hoop strengthened tubes, which will be ii) evaluated at 'in-service' loads at service temperatures and environments. This research program is being conducted in collaboration with the DOE's Oak Ridge National Laboratory and the vested industrial partner Special Metals Corporation.

In this ninth quarter of performance, program activities are continued for Tasks 2, 3 and 4 and are reported herein. Two sets of MA956 tube material samples rotary cross-rolled at rolling angles of $\beta=2^\circ$ and 8° are processed in Task 3 and available for mechanical property testing in the remainder of this project. These samples are at various stages of creep testing and evaluation in Task 4. The creep rigs are being upgraded to handle long term testing at 1000°C and above. Reduced test times at accelerated temperatures will allow for additional tests to be conducted resulting in overall robust creep data statistics. The creep performance enhancement in cross-rolled MA956 material samples versus the base creep property is elucidated. Additional creep enhancements are derived when flow formed tubes are flattened at 900°C and recrystallized. The Larsen-Miller parameter for the improvised thermo-mechanical processing now approaches 52. ***At least 2-3 orders of magnitude of improvement in creep rates/day are demonstrated for the cross-rolled samples versus the base reference tests.***

Cross-Roll Flow Forming of ODS Alloy Heat Exchanger Tubes For Hoop Creep Enhancement

Table of Contents

1. Executive Summary	1
2. Experimental Task Structure	3
3. Experimental Program Activity	3
4. Results and Discussion	9
5. Conclusions	9
6. References	10

§ 1. Executive Summary

Mechanically alloyed oxide dispersion strengthened (ODS) ferritic alloys based on FeCrAl and intermetallic Fe₃Al alloys are promising materials for high-temperature, high-pressure tubing, liner and shell applications on account of their creep strength at very high temperatures and excellent corrosion resistance in oxidizing, oxidizing/sulphidizing and oxidizing/chlorinating environments compared to available high-temperature alloys. Requirements for such a combination of properties are found in advanced systems being developed for utilization of fossil fuels, such as the DOE's **Vision 21** and **FutureGen** programs and in improved gas turbines being developed for power generation.

The creep strength of conventional high-temperature alloys decreases rapidly with increasing temperature, as shown in Fig. 1, since the thermodynamic stability of the various available strengthening phases also decreases with increasing temperature¹. Also shown in Fig. 1 is the significant increase in temperature capability afforded when a dispersion of inert oxide particles is used as the strengthening phase. A major feature of oxide dispersion-strengthened alloys is that the most successful route for their preparation appears to involve powder metallurgical processing²⁻⁶. Further, the critical need to maintain the fine size, volume fraction, and uniform distribution of the oxide particles in the alloy matrix, as well as the need to develop specific grain shapes, results in some significant differences in alloy fabricability and in the application of joining procedures, compared to conventional cast and wrought alloys. Hence, while ODS alloys offer a significant increase in temperature capability, they have a limited formability envelope, their mechanical properties are very anisotropic, and they cannot be joined by conventional fusion welding processes. Thus, the exploitation of the full capabilities of ODS alloys is limited until these critical hurdles are addressed and overcome.

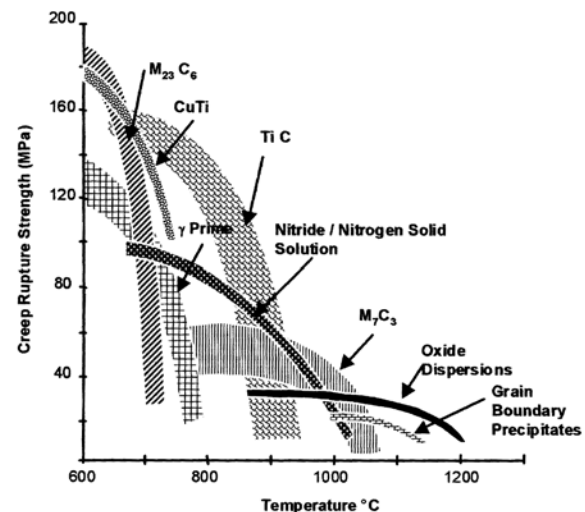


Figure 1. The creep performance envelope as a function of strengthening phase [1].

Our current program target is envisaged as a demonstration of the applicability of ferritic and Fe₃Al-based ODS alloys in the high temperature heat-exchanger tubing as proposed under the proposed DOE's **Advanced Power System** program metrics, intended to sustain internal pressures (P) of up to 1000psi at service temperatures of 1000-1200°C. Within the framework of this target application, the development of suitable mechanically alloyed ferritic FeCrAl and intermetallic Fe₃Al alloy materials and processes must strive to deliver a combination of high mechanical strength at temperature and prolonged creep-life in service. Such design requirements are often at odds with each other as strengthening measures severely limit the as-processed grain size detrimental to creep life. The extrusion consolidation processes currently employed cause material flow in the longitudinal direction, resulting in extreme dispersoid and powder surface impurity fibering in the axial direction in ODS materials. Thus, elongated grains are produced aligned parallel to the longitudinal direction, with a fine grain spacing in the hoop direction. The basic problem of limited hoop creep is illustrated in Figure 2a,b within the context of the existing underlying grain structure. Fortunately ODS-alloys do exhibit intrinsic creep

strength sufficient to meet design requirements albeit that this performance is only exhibited in the longitudinal direction. Ultimate failure in transverse (hoop) creep involves creep cavity concentration, Figure 2b, which strongly depends on the dominant grain boundary orientation with respect to the loading axis, Figure 4⁷. Such fibering, unless altered by post-flow forming, is expected to thwart attempts to arrive at the large transverse grain size^{3,8} considered essential for improved creep performance in the hoop direction. Clearly what is required is to devise a means of effecting material flow in directions other than longitudinal that would reorient the primary fibering axis of dispersoids and impurities in the hoop direction.

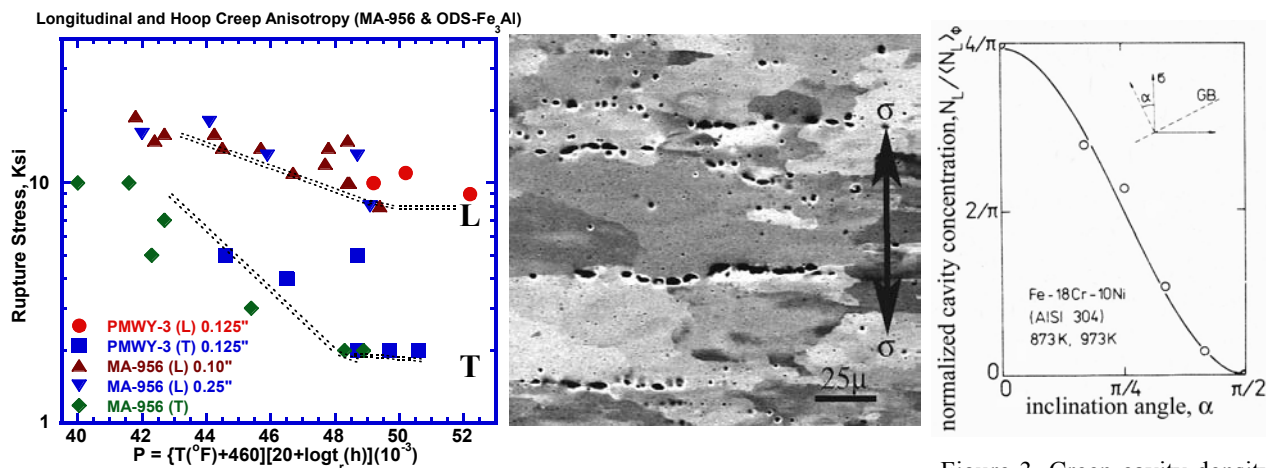


Figure 2. Longitudinal (L) vs. transverse (T) creep anisotropy in Fe₃Al (PMWY3) and MA-956 tubes. b) Creep cavitation observations in hoop creep loading tests.

Thus, our research objective is to modify tube-processing methodologies by incorporating cross-roll forming to create the underlying microstructure that will meet or exceed the design 'in-service' creep-life requirements of such ODS-alloy heat exchanger tubes. We are examining microscopic, microstructural and morphological issues with a view to addressing optimum material design for macroscopic components for a well prescribed 'in-service' loading criteria. This quarterly report summarizes our research activity up to the ninth quarter of performance period of September 1st 2005 - December 31st 2005. *For the benefit and clarity of presentation, these reports are cumulative in order of submission.*

In this quarterly performance period program work is continuing in Tasks 3 and 4. In Task 3, the capital equipment acquisition and installation at UCSD is complete. Additional hot cross-rolling trials of tube samples conducted at $\beta=2^{\circ}$ and 8° rolling angle were reported previously. These tubes have been recrystallized and creep test specimens have been spark machined and await further creep testing. In Task 4, samples obtained from Task 2.1 are being evaluated in transverse (hoop) creep tests. Initial results of MA956 tests reported here are compared with baseline creep performance data. The enhanced performance of cross-rolled MA956 is evident and consistent with ODS-Fe₃Al enhancements⁸. A revised thermo-mechanical process is applied to the ambient temperature flow-formed tubes. This revision has produced additional hoop creep strengthening with Larsen Miller parameter approaching 52 as reported herein. Such creep performance improvements require that test temperatures be incremented to keep the testing regime short while still yielding valuable results. Current creep rigs are being retrofitted with new pull rods and furnace hardware to conduct testing at 1000°C and higher. This improvement is currently in process and expected to be completed next quarter. Further accelerated creep test data collection will resume upon completion of this upgrade.

§ 2. Experimental Task Structure

The experimental work reported here is described in the context of the task structure outlined below. For the duration of this program activity through September 30th 2006 and required quarterly reporting we will refer to this task structure for clarity and precise reference.

Task 1: Extrusion Consolidations, Tube and Sheet Forms: Completed

- 1.1 ODS-Powder materials –milling studies, impurity evaluation*
- 1.2 Annular ODS-Alloy tube and sheet extrusions*

Task 2: Rolling Studies for Optimum Fiberling: Initiated & Continuing

- 2.1 Single vs. cross-rolling evaluation, Parametric studies*
- 2.2 Correlate cross-rolling strains and overall grain re-orientation*

Task 3: Post-Extrusion Cross-Roll Rolling of ODS-tubes & shells: Initiated & Continuing

- 3.1 Helical/cross rolling for grain fiberling*
- 3.2 Computer model verification for torsional flow predictions*

Task 4: Microstructure and Creep Performance Evaluation: Initiated & Continuing

- 4.1 Recrystallization annealing: static and gradient*
- 4.2 Microstructure characterization & evaluation*
- 4.3 Transverse creep and stress-rupture response*

§ 3. Experimental Program Activity

Task 2.1: Single vs. cross-rolling evaluation, parametric studies: Flat sections of initial uniaxially rolled/extruded coupons to be cross-rolled *via* parametric evaluations of cross-grain fiberling of the underlying grain structure.

Materials produced in Task 1.1 and 1.2 were sectioned and examined for microstructural details. No recrystallization was observed in either alloy materials as a result of this 900°C thermal-mechanical treatment. This flattened strip is the required material for the initial matrix of parametric cross-rolling studies. Based on the post-forging microstructural evaluation, and in the interest of narrowing experimental windows, all further cross-rolling studies are to be conducted at 900°C. Residual curvature in the forge-flattened specimens was eliminated via subsequent rolling as described here. Three separate rolling schemes were employed: 1) Rolling longitudinally in 0.01” steps till the sample was measurably flat, 2) Rolling transversely to the tube axis in 0.01” steps till the sample was measurably flat, and 3) Rolling transversely to effect a net 20-25% thickness reduction in the starting wall thickness. In the rolling schedule 3, this large deformation was accomplished in steps of 4-5% reduction per pass with the sample reheated to 900°C for 15 minutes in the air furnace. The rolled flat samples are removed from their stainless steel wraps and prepared for the recrystallization treatments. Additional levels of (cross-rolling) strains are evaluated iteratively on an as needed basis. The cross-rolled specimens are recrystallized to create abnormal grain growth in such ODS-alloy coupons. The heat

treatments are 1-hour at 1200°C in air for ODS-Fe₃Al and a 1-hour at 1375°C in air for FeCrAl (MA956). Microstructures reveal elongated grain shapes in the transverse orientation only for the sample cross-rolled 20-25% in the transverse orientation. It is likely that surface layers are affected in rolling schedule 1 and 2 but no changes are perceptible at the optical resolution level.

Task 3: Cross-Roll Rolling: As part of this task UCSD proposed to purchase and install a rotary cross-rolling set up for all cross-rolling operations of MA956 and ODS-Fe₃Al tubes under this program and any future needs. Figure 4 shows a Medart size ‘0’ straightener that was purchased, reconditioned and installed at UCSD. The size ‘0’ machine is capable of processing rod and bar in the size range of ¼” – 1½” and tubes in the size range ¼” – 2”. The machine is powered by a 30HP motor is suitable to perform cross-rolling operations at near ambient temperatures in MA956 alloys. The current roll configuration is concave-convex pair that needs to be retrofitted to convex-convex pair. Machine diagrams for this concave-convex conversion are in process. Initial efforts are on existing geometry on dummy 2” OD carbon steel tubes. By downsizing the roll diameter, we expect to cross-roll 2½” OD tube.



Figure 4 Cross-Rolling equipment currently installed at UCSD. The equipment is capable of rolling up to 1-1/2” bar/rod and up to 2-1/2” diameter alloy tubing in a continuous fashion

Initial cross-rolling trial experiments are performed employing two main variables. a) Rolling pressure and b) the rolling angle (α). The machine class and the size of the power plant turning the rolls under pressure dictate rolling pressure. The rolling angle provides the force bifurcation into the normal pressure component and the translation component affecting the movement of the tube through the roll gap geometry. Figure 5 describes the process, which is used in seamless tube manufacturing of conventional alloys. The rolls are set obliquely to each other and are inclined at small but equal angles (α) to the tube feed axis (z). The surface velocity of the roll (V_r) at any material contact point is decomposed into V_{tz} in the longitudinal direction, and $V_{t\theta}$ in the circumferential direction, as given by:

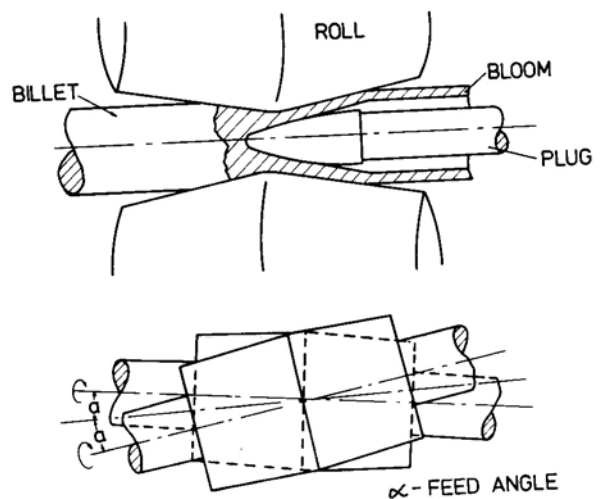


Figure 5. Tube cross-rolling schematic. The surface inclination of the rolls and the feed angle α dictate the overall circumferential strain and torsion.

$$V_{tz} = V_t \sin \alpha = \omega R_{\omega z} \sin \alpha \quad (1)$$

$$V_{t\theta} = V_t \cos \alpha = \omega R_{\omega z} \cos \alpha \quad (2)$$

where ω = angular velocity of the rolls, and $R_{\omega z}$ is the roll radius at the section of interest. The hollow tube is subjected to the action of frictional traction forces, whereby the axial component produces the forward movement of the tube, and the tangential component produces cross-rolling and is responsible for its torsional rotation¹³.

Two separate rolling angles of 2° and 8° were attempted for 12" long section of MA956 tube cross-rolled at 900°C . A total of 6-8 passes are given through the rolls reheating the tube after each pass for 10 minutes. Note that precise measurements of rolling pressure are not possible but the roll gap and subsequent roll gap increments are kept consistent over the series of experiments performed. Figure 6 shows the end view of the tube walls after the $\beta=2^\circ$ (top) and $\beta=8^\circ$ (bottom) deformation. A straight radial (dashed red line) notch was inscribed on the end of the tube wall to monitor material flow during the deformation process. The inclined image of the same notch (indicated by red arrows) provides a measure of the shear deformation induced by rotary cross rolling. We note that the sheared notch is remarkably straight for the $\beta=8^\circ$ rolling angle condition indicating that the shear deformation is rather uniform over the entire tube wall thickness. Shear deformation is non-uniform and confined to the middle of the tube wall section for $\beta=2^\circ$ rolling angle. The shear angle (γ) was measured as 35° (in Figure 6,

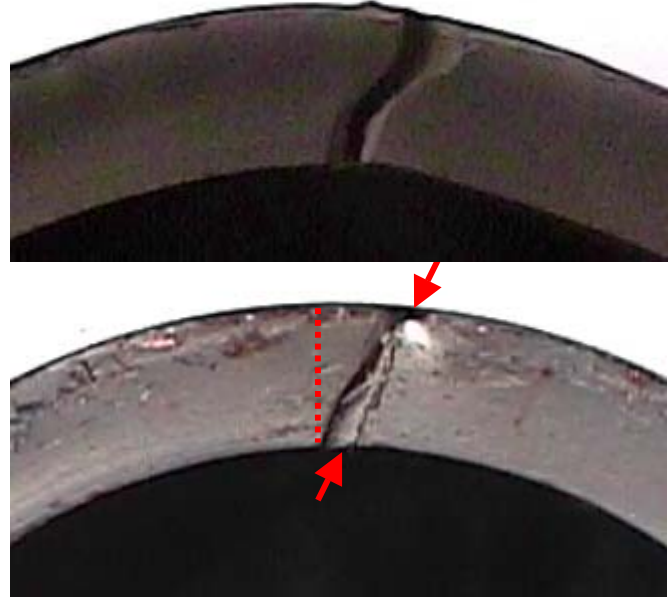


Figure 6. Cross rolling of MA956 tube via repeated passes at 900°C . Micrographs show rolling angle $\beta=2^\circ$ (Top) and 8° (Bottom). The red line indicates the notch as inscribed on the tube wall prior to testing. The angle between the red line and the sheared image (denoted by red arrows) gives the shear strain incurred via rotary cross-rolling process.

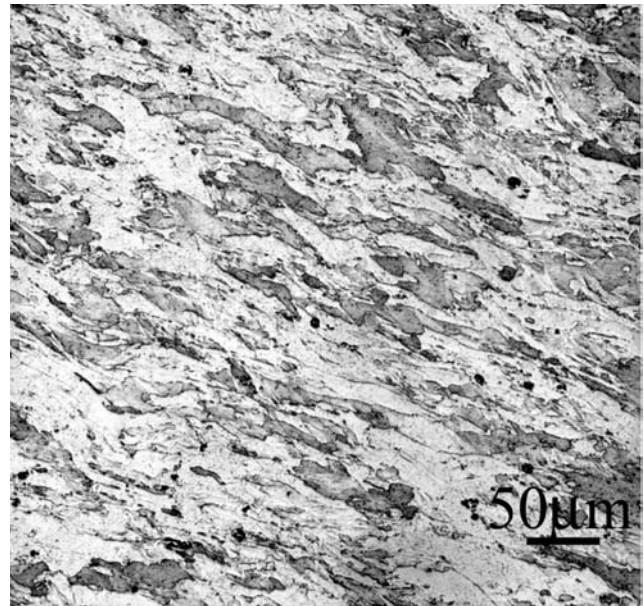
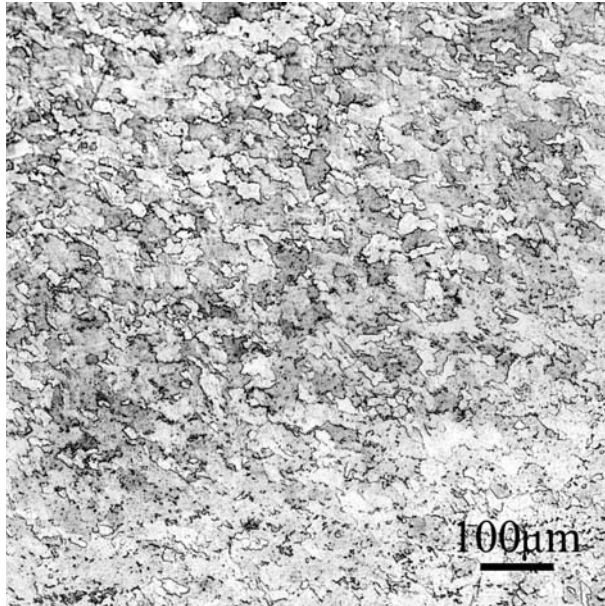


Figure 7. Cross-sectional view of a) as -received, recrystallized and b) cross-rolled and recrystallized MA956 tube ($\beta=8^\circ$). The grain shape is significantly modified, with the long axis now stretched along the hoop direction.

bottom) with a shear strain = 0.7. Figure 7 (a), (b) show the before and after tube cross-section views indicating grain realignment under such rotary deformation. The as received extruded cross-section 2-dimesional views shows equiaxed structure, which undergoes a shape change under rotary deformation. The grains, with aspect ratio significantly greater than unity and extended in the hoop direction are deemed beneficial for hoop creep performance.

Tube samples are being flattened at 900°C using a combination of hot pressing and rolling. ASTM E-8 specimens are to be extracted from the entire tube wall-thickness by spark machining for hoop creep testing in Task 4.

Task 4.1: Recrystallization Annealing: Recrystallization strategies for creating abnormal grain growth in ODS alloy materials cross-rolled in Task 2.1 (and from Task 3 in later periods) suitable for transverse creep enhancements are listed in Table 1.

Table 1: Recrystallization matrix for cross-rolled ODS-Fe₃Al and MA956 materials

HT Test#	Material	HT: Temperature, °C	HT: Time, Hrs	Environment
1	ODS-Fe ₃ Al	1200°C	1 hr	Air
2	ODS-Fe ₃ Al	1200°C	1 hr	Argon
3	ODS-MA956	1375°C	1hr	Air
4	ODS-MA956	1375°C	1hr	Argon
5	ODS-MA956	1400°C	1hr	Air
6	ODS-MA956	1400°C	1hr	Argon

The heat-treatment temperatures are based on prior DOE funded work²⁻⁵ performed by the PI. The introduction of inert environment HT was initially applied to ODS-Fe₃Al alloys^{3,8}, which produced significant improvements in transverse creep. In the current performance period HT tests 1, 2, 3 and 5 have been completed for all cross-rolled materials from Task 2.1. Additional tests 4 and 6 are to be conducted later following a furnace overhaul.

Task 4.2: Microstructure Evaluation: Microstructures reveal elongated grain shapes in the transverse orientation for samples cross-rolled, Figure 7(b) in the transverse orientation. It is likely that surface layers are affected in rolling schedule 1 and 2 of Task 2.1 but no changes were perceptible at the level of optical resolution.

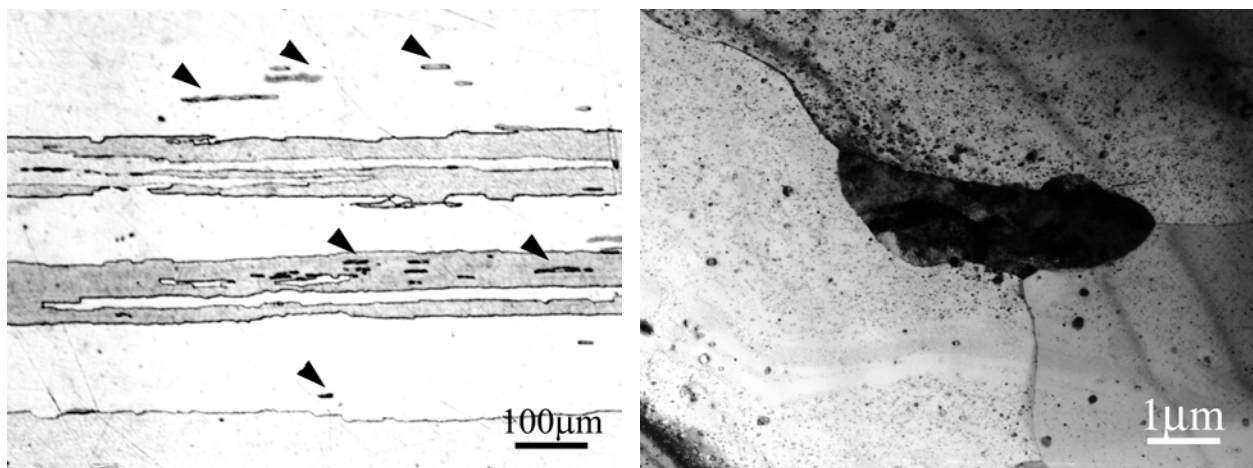


Figure 8 a) optical micrograph of as-extruded and recrystallized MA956 with a large number of unrecrystallized stringers, which are mitigated via secondary processing though b) not entirely eliminated, TEM view.

One beneficial aspect of post extrusion processing is to mitigate the existence of unrecrystallized stringers of fine-grained material dispersed through out the matrix. Figure 8(a) shows the stringers (indicated by arrows) stretched along the extrusion axis. These stringers are invariably present in as-extruded material and are detrimental to hoop creep performance. Such stringers are minimized (i.e. reduced in size and in numbers) via post processing working though not entirely eliminated. Figure 8(b) shows the remnant of such stringers in cross-rolled materials, where they exist at grain boundaries or within a single grain.

Task 4.3: Transverse Creep and Stress Rupture Response: The initial cross-rolled samples from Task 2, heat treated in Task 4.1 are spark machined to extract ASTM E-8 standard specimens from the transverse orientation. These are being evaluated in transverse creep tests initially being performed at dead load 1-2Ksi stresses over a temperature range of 800°C – 1000°C in air.

Figure 9 shows a typical response pattern of a MA956 cross-rolled sample (cross rolled 20%) in creep tests. The sample exhibits a brief primary regime, an extended steady state regime (creep rate= $9e^{-5}$ /day) followed by a tertiary regime. The y-axis gridline spacing denotes a creep strain of 2%. Note that the sample fails at an overall strain of about 3% with the largest component of strain (about 2%) occurring in the tertiary (failure) regime. The creep life (Larsen-Miller parameter) LMP = 48.87 based on 1381hrs test exposure) is of the order of about 1% creep strain in the steady-state regime.

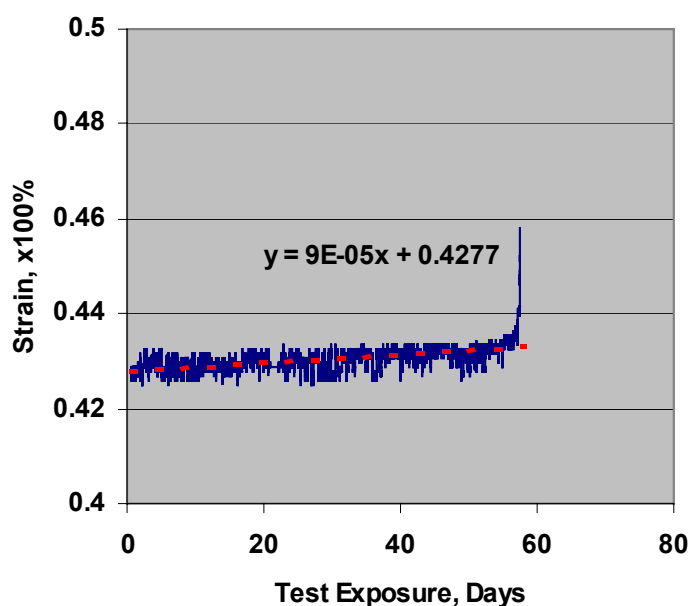


Figure 9. Creep test of a MA956 sample extracted from a 2 ½" OD, ¼" wall thickness tube and cross-rolled at 900°C to 20% reduction. Creep test conducted at 900°C at 2Ksi stress in air.

Table 2 lists selected creep data compiled for MA956 base material (Test# 1-3), hot cross-rolled samples (Test# 4-7) and ambient temperature flow formed (Test# 8-11) specimens. Samples for the base and cross-rolled conditions were extracted from the same 2 ½"OD, ¼" wall thickness MA956 tube. Similar MA956 tubes are used for flow forming where the wall thickness is reduced 75-80% in several reducing steps at ambient temperatures. Base material tests 1-3 were run at 900-950°C in air at a 1-2Ksi stress and the Larsen-Miller (L-M) Parameter for the base material is rather poor. In comparing tests 1-3 we note both an acute stress and temperature sensitivity in this upper limit temperature regime. For example, the creep rate at 900°C increases by three orders of magnitude from $2.0e^{-5}$ to $2.0e^{-2}$ when the stress is increased from 1Ksi to 2Ksi, and increases by about two orders of magnitude from $2.0e^{-5}$ to $1.5e^{-3}$ as temperature is increased from 900°C to 950°C. A peak value of L-M = 46.09 at a mean creep-rate of $2.0e^{-2}$ was observed for test# 1 loaded at 2Ksi and will be used for base comparisons. The mean creep rate/day (for tests 4-6) is estimated at $1.75e^{-4}$ with a mean Larsen Miller parameter = 48.67. Thus, at least 2 orders of magnitude improvement in creep rates is achieved for the cross-rolled tests in this initial evaluation. Test 7 indicates the strain rate sensitivity with respect to temperature. Thus strain rate drops by about 3 orders of magnitude from 10^{-4} range to 10^{-7} as the temperature is lowered from 900 to 800°C.

This test was terminated after 3400 hours as the creep-strain was observed to saturate at this temperature. Finally, tests 8-10 are creep results from flow formed specimens deformed 75-80%. These flow formed tubes are slit by spark machining and flattened at room temperature and recrystallized as per the schedule indicated in Table 2. The mean creep rate is about 4.0e^{-4} at 900°C and rises to 2.6e^{-3} at 950°C and 1.1e^{-2} at 1000°C . While there appears to be some scatter in the data, the test results suggest that L-M parameter is essentially similar over the 900-1000°C ranges and reconfirms the validity of accelerated creep tests.

Table 2. Summary of creep tests performed on cross-rolled and base MA956 alloy tubes

Test	MA956 Alloy Treatment & HT	Test Temp	Test Stress	L-M Para.	rate/day
1	Flattened@900C, HT: 1375°C-1hr, Air	900°C	2Ksi	46.09	2.00e^{-2}
2	Flattened@900C, HT: 1375°C-1hr, Air	900°C	1Ksi	48.81	2.00e^{-5}
3	Flattened@900C, HT: 1375°C-1hr, Air	950°C	1Ksi	49.20	1.50e^{-3}
4	CR-20%@900C, HT: 1375°C-1hr, Air	900°C	2Ksi	48.87	9.00e^{-5}
5	CR-20%@900C, HT: 1375°C-1hr, Air	900°C	2Ksi	48.24	6.00e^{-4}
6	CR-20%@900C, HT: 1400°C-1hr, Air	900°C	2Ksi	48.89	1.00e^{-4}
7	CR-20%@900C, HT: 1400°C-1hr, Air	800°C	2Ksi	—*	6.00e^{-7}
8	FlowForm@RT, HT: 1375°C-1hr, Air1	900°C	2Ksi	48.91	5.00e^{-4}
9	FlowForm@RT, HT: 1375°C-1hr, Air1	1000°C	2Ksi	48.77	1.14e^{-2}
10	FlowForm@RT, HT: 1375°C-1hr, Air1	950°C	2Ksi	48.60	2.60e^{-3}
11	FlowForm@RT, HT: 1375°C-1hr, Air1	950°C	2Ksi	49.83	4.00e^{-4}
12	FlowForm@RT, HT: 1375°C-1hr, Air1	900°C	2Ksi	49.00	4.00e^{-4}
13	FlowForm@RT, HT: 1375°C-1hr, Air2	1000°C	2Ksi	51.93	7.00e^{-4}
14	FlowForm@RT, HT: 1375°C-1hr, Air2	950°C	2Ksi	51.37 [#]	2.00e^{-5}

*Creep tests discontinued; [#]Test continuing.

We note that ambient temperature flattening of Flow Formed tubes always produced samples with some residual warp in them. In particular, some residual curvature is often observed in the gage section of the ASTM E-8 specimens in test# 8-12 in Table 2. Ambient temperature flattening is desirable to preserve the cold-forming induced strain energy into the material only to unlock it during recrystallization treatment to produce a large processed grain structure. However, there was some concern that the data yielded sufficient scatter and more importantly the curvature-induced effects were undermining or masking true material and microstructure performance. Thus, the thermo-mechanical flattening procedure is revised and conducted at 900°C (labeled Air2) in parity with other rolled specimens (i.e., in tests#1-3 and tests#4-7). This testing phase was commenced in the previous quarter and incremental results (test#13, 14, Table 2) are presented here. Test 13 was completed in the previous quarter. Test 14 is still continuing and has been suspended while the creep rigs and hardware is being upgraded to handle more aggressive test temperatures. We expect the LMP value for test#14 to ultimately exceed that recorded for test#13. Additionally tests will be conducted at 1050°C to consolidate this performance expectation of Flow Formed MA956 materials.

This revised flattening and recrystallization (HT2) scheme provides considerable gains in hoop creep enhancement. The revised HT specimens are being tested at more aggressive 950 - 1000°C range and comparisons only possible at 950°C . For example, the measured creep rate is 1.50e^{-3} for base material (test#3 at 1Ksi stress), 4.00e^{-4} for flow-formed HT1 and 4.00e^{-5} for flow-formed HT2 treatments. *The base material LMP = 46.09 has now been improved to 51.93.*

§ 4. Results and Discussion

Significant grain alignment was recorded (Task 2.1. cross-rolling of flat MA956 samples) in the transverse direction for samples cross-rolled 20%. In the initial rotary cross rolling of MA956 tube samples we note a similar material flow in the circumferential direction as illustrated macroscopically in Figure 6 and microscopically in Figure 7. Secondary deformation processes also seem to mitigate the occurrence of unrecrystallized fine-grained stringers, Figure 8(a), (b) that are extremely detrimental to hoop creep performance. We anticipate the material flow imposed in cross rolling and flow forming also acts to realign the remaining stringers in the hoop direction where their impact on creep void formation at these junctions can be mitigated as well.

This shear deformation and its precise characteristics across the wall thickness of the tube are process dependent. This shear is surprisingly uniform across the tube wall thickness at $\beta=8^\circ$ and very non-uniform at $\beta=2^\circ$ cross rolling angle. The leading direction of the tube was not precisely tracked between passes, and it is unknown if this affects the results as well. Nonetheless, the uniform shear observed at $\beta=8^\circ$ across the tube wall thickness illustrates the uniformity of the rotary rolling process under proper and well defined process parameters. The installation of an in-house rotary rolling apparatus at UCSD has been accomplished. The increased deformation capacity, on account of the larger power source, assures that materials can be rotary cross-rolled at ambient temperatures. This is beneficial in order to preserve the deformation strain energy that could produce large grains during its release upon recrystallization

Our initial intent was to compile creep data on cross-rolled samples to be compared to base data generated at ORNL. However, reference MA956 data from ORNL was compiled from samples with a different processing history. In an effort towards uniformity we are compiling our own base hoop creep data for 2 1/2"OD, 1/4" wall thickness tubes. In task 4, we have evaluated the performance of flat MA956 cross-rolled 20% that is deemed about 2 orders of magnitude better than the base reference samples in creep rates. The flow formed creep results obtained in the current performance period seem to have some scatter perhaps due to the residual curvature in the room-temperature flattened specimens. On occasion such specimens exhibited large creep rates (for example test# 10). Results from flow formed materials recrystallized under the revised heat treatment (HT2) exhibit further hoop creep enhancement till date suggesting that optimum effects may be achievable via increased deformation strains. Furthermore, it appears that a 900°C flattening treatment may not be detrimental as previously anticipated. This result is expected to modify our processing path selection as the ***base material LMP = 46.09 has now been improved to 51.93***. The MA956 material exhibits an extreme stress and temperature sensitivity both in the base as well as the cross-rolled and flow-formed condition. We expect similar results for the rotary cross-rolled tubes from Task 3.

§ 4. Conclusions

The current research program is concluding its ninth quarter of performance. The project progress is on schedule with work continuing in Tasks 2-4. MA956 tubes have been successfully rotary cross-rolled while inducing significant and near uniform shear strain across the tube wall thickness under appropriate conditions. The grain shape changes and realignment are consistent with prior evidence for the flat cross-rolled samples. We also note the mitigation of fine-grained stringers that can affect hoop creep rather significantly.

Creep tests of post processed samples both in the high temperature laboratory cross-rolling as well as the ambient temperature flow forming illustrate their significantly enhanced creep

response in terms of creep rate/day as well as overall Larsen-Miller parameter when compared to base samples. This is the original predicate of our proposed program now being realized in practice. Thus, post-processing methods may be employed to improve the vendor-supplied material. Test results on flow formed MA956 (reduced 75-80% in wall-thickness) indicate that the creep performance is significantly enhanced at larger deformation strains. This beneficial improvement is considerably larger than that achieved in cross-rolled samples deformed only 20% and is statistically significant. Contrary to earlier belief, present result suggests that while the beneficial effects of grain shape control may become apparent and achievable at low levels of deformation strain, these effects can be improved upon with incremental deformation up to 80%. We will explore the maximum performance improvement possible via such increased deformation and to narrowly define and characterize the processing window for such property enhancement. Process parameter issues will be fully explored in the remainder of this program.

The creep rig retrofit is to be completed in early 2006 and concerted data collection will commence at temperatures of 1000°C and above. Such accelerated testing will shorten the individual test duration and allow additional tests to improve overall creep data statistics.

References:

1. F. Starr, in *Materials for High-Temperature Power Generation and Process Plant Applications*, A. Strang, Ed., IOM Communications Ltd., Book No. 728, pp. 79-152 (2000).
2. V.K. Sikka, I.G. Wright, and B.K. Kad, "Processing of Oxide-Dispersion-Strengthened Fe₃Al-Based Alloy Tube" (1998) *12th Annual Fossil Energy Materials Conf.*, Knoxville, TN, May 12-14, 1998, p.11-19
3. B.K. Kad, C.G. McKamey, I.G. Wright and V.K. Sikka, "Optimization of ODS-Alloy Properties" (2002) *16th Annual Fossil Energy Materials Conf.*, Baltimore, MD, April 22nd–24th, 2002.
4. B.K. Kad, C.G. McKamey, I.G. Wright and V.K. Sikka, "High Temperature Mechanical Properties of ODS-Fe₃Al Tubes" (2001) *15th Annual Fossil Energy Materials Conf.*, Knoxville, TN, April 30th -May 2nd, 2001
5. B.K. Kad, V.K. Sikka, R.N. Wright and I.G. Wright, "Oxide Dispersion Strengthened Fe₃Al-Based Alloy Tubes" (2000) *14th Annual Fossil Energy Materials Conf.*, Knoxville, TN, April 24-26, 2000; *ibid* (1999) *13th Annual Fossil Energy Materials Conf.*, Knoxville, TN, May 11th–14th, 1999.
6. J. Ritherdon, A.R. Jones and I.G. Wright, "The Recovery and Recrystallization of a Mechanically Alloyed ODS-Fe₃Al Alloy" (2001) *Materials Science Forum*, **360-362**, pp.217-222, 2001
7. I.W. Chen and A.S. Argon, "Creep Cavitation in 304 Stainless Steel" (1981) *Acta Metallurgica*, **29**, p.1321, 1981; *ibid.* "Diffusive Growth of Grain-Boundary Cavities" *Acta Metallurgica*, **29**, p1759, 1981
8. B.K. Kad, I.G. Wright, V.K. Sikka and R.R. Judkins, (2004) "Optimization of Hoop Creep Response in ODS-Fe₃Al Tubes" *18th Annual Fossil Energy Materials Conf.*, Knoxville, TN, June 2nd–4th, 2004
9. T.Z. Blazynski, "Metal Forming – Tool Profiles and Flow" Macmillan Press, NY, 1976