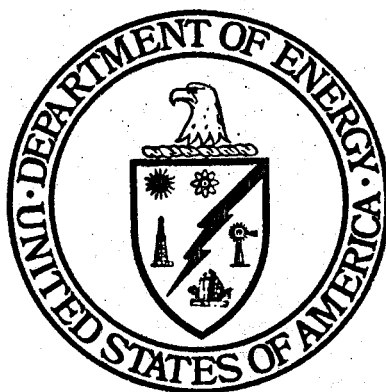


ENTINGH

GEOTHERMAL R&D PROGRAM SUMMARY FY 1988 PROJECT SHEETS



OCTOBER 1988

PREPARED FOR:
GEOTHERMAL TECHNOLOGY DIVISION
U.S. DEPARTMENT OF ENERGY
WASHINGTON, D.C. 20585

GEOHERMAL R&D PROGRAM SUMMARY FY 1988 PROJECT SHEETS

OCTOBER, 1988

**PREPARED FOR:
U.S. DEPARTMENT OF ENERGY
GEOHERMAL TECHNOLOGY DIVISION**

UNDER CONTRACT: DE-AC01-86CE-30844

**PREPARED BY:

MERIDIAN CORPORATION
4300 KING STREET
SUITE 400
ALEXANDRIA, VA 22302**

ACKNOWLEDGEMENTS

This document is the result of the collective efforts of the U.S. Department of Energy's Geothermal Technology Division (GTD) and staff of the Meridian Corporation's Technology Applications Group. Special appreciation is extended to Ralph Burr, Allan Jelacic, and David Lombard of GTD for their valuable guidance during the formative stages of this document. Individual DOE/GTD Program Managers and the Project Managers at the various national laboratories and research institutions are also acknowledged for their input and assistance. This document was edited by Deepak Kenkeremath; principal contributors included Fadia Farrell, James Kupa, and Mamo Haile-Mariam of the Meridian Corporation. Special thanks go to Claudia MacDonnell and Kelly Poe for their efforts in document production.

PREFACE

The Geothermal Technology Division of the U.S. Department of Energy is the lead Federal organization charged with the research and development of technologies to economically exploit the nation's vast geothermal resources. The Geothermal Technology Division (GTD) conducts a discrete portfolio of high-risk, high-payoff R&D projects in concert with U.S. industry's near-, mid-, and long-term needs. The objective of the Geothermal R&D Program Summary is to provide a "snapshot" in time of the ongoing R&D projects within GTD. The Geothermal R&D Program Summary highlights each individual project/contract performed by national laboratories or under contract by industrial, academic and other research institutions involved in GTD-funded geothermal energy technology development. It is designed to be an easily accessible reference that can inform the U.S. geothermal industry and other interested parties of the technological advances and progress achieved in the DOE Geothermal program, as well as to describe the thrust of the current R&D directions. The document also can be used to inform industry of potential technology transfer opportunities and future R&D needs.

The document contains two sections: 1) A brief program overview including the organizational structure and the outline of program funding; 2) Individual program component descriptions and individual project summary sheets for the FY88 Geothermal Research and Development Program. Appendix A is a directory of DOE HQ/GTD, Field Offices, and national laboratories managers involved in the Program, and a list of current contractors. Appendix B lists task names and associated projects and managers.

TABLE OF CONTENTS

	<u>Page</u>
PREFACE.....	iii
1.0 INTRODUCTION TO THE GEOTHERMAL PROGRAM.....	1
Legislative Mandate.....	3
Organization.....	3
Definition of Terms and Program Structure.....	5
Geothermal Research Funding.....	5
2.0 HYDROTHERMAL RESEARCH PROGRAM DESCRIPTIONS.....	11
2.1 Industrialization.....	14
2.2 Reservoir Technology.....	15
2.3 Hard Rock Penetration.....	59
2.4 Conversion Technology.....	85
3.0 GEOPRESSURED RESEARCH.....	117
4.0 HOT DRY ROCK RESEARCH.....	125
5.0 MAGMA RESEARCH.....	135
APPENDIX A: R&D PARTICIPANTS.....	A-1
APPENDIX B: TASK NAMES.....	B-1

SECTION 1.0
INTRODUCTION TO
THE GEOTHERMAL PROGRAM

1.0 PROGRAM OVERVIEW

Legislative Mandate

The Geothermal Research and Development Program was created in 1974 by the Geothermal Energy Research, Development, and Demonstration (RD&D) Act.

The Atomic Energy Commission (AEC) had been given an earlier mandate from Congress to conduct geothermal research and development, as had the National Science Foundation. While some ongoing geothermal R&D activities had their origins within those two agencies, the RD&D Act made the first "national commitment... to dedicate the necessary financial resources and enlist the cooperation of the private and public sectors in developing geothermal resources..."

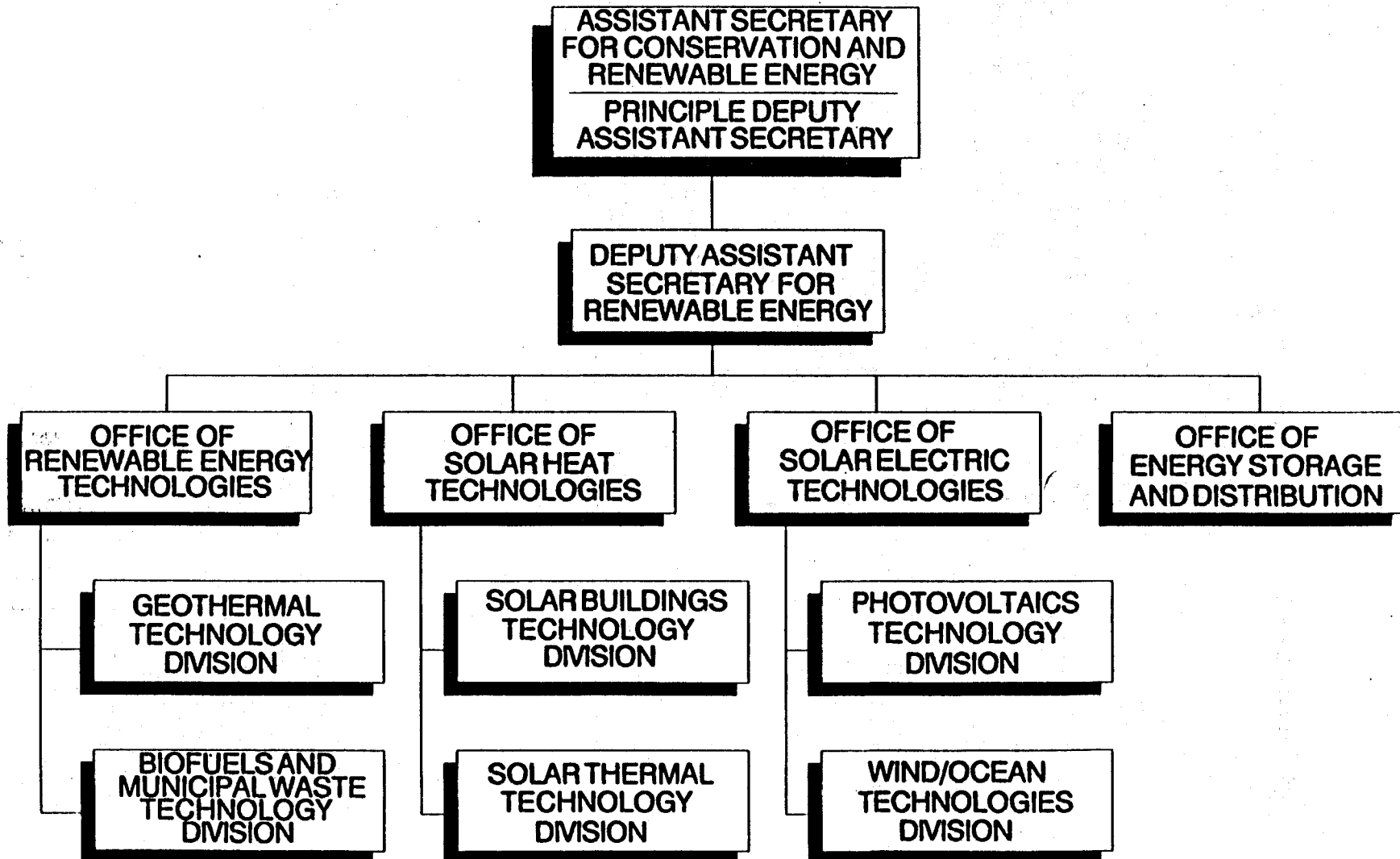
Organization

The lead responsibility for coordinating and managing the Federal geothermal R&D program was passed to the Department of Energy (DOE) when it was created in 1977 and is implemented by the Geothermal Technology Division.

Exhibit 1 shows the organizational structure of DOE's Office of Conservation and Renewable Energy (CE). The Geothermal Technology Division (GTD) lies within the Office of Renewable Energy Technologies (ORET). ORET in turn reports to the Deputy Assistant Secretary for Renewable Energy (DAS/RE) under the overall guidance from the Assistant Secretary for Conservation and Renewable Energy (AS/CE).

The overall strategy and objectives of GTD are contained in the Multi-Year Plan, which discusses the R&D effort and major milestones for the next five year period. Detailed information on the annual objectives and accomplishments of the research and development efforts of GTD are disseminated through the Division's Annual Operating Plan (AOP).

Exhibit 1.
**OFFICE OF CONSERVATION AND
RENEWABLE ENERGY**



Definition of Terms and Program Structure

To ensure proper detail for the individual project summary sheets, the following GTD definitions have been used:

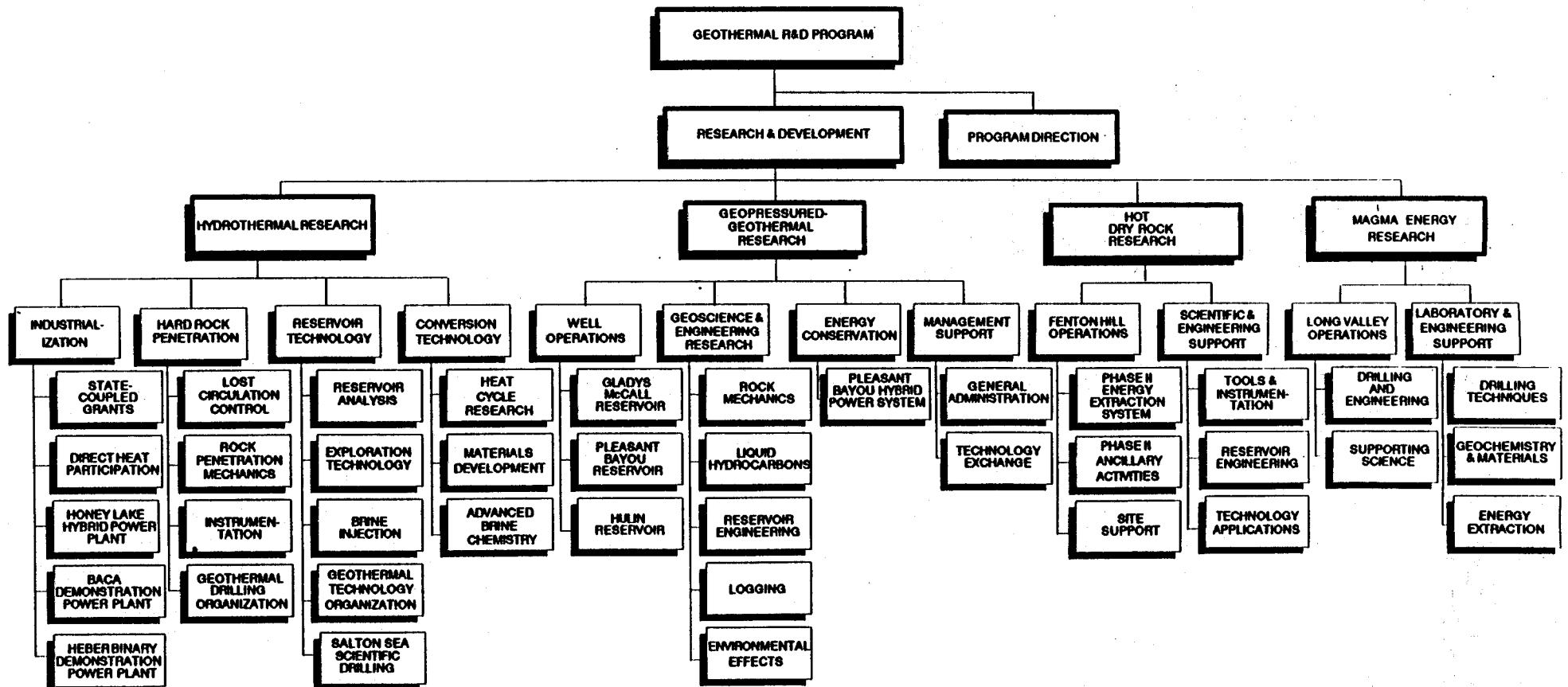
<u>Term</u>	<u>Definition</u>
Program	From a management and organizational perspective, there is only one program -- the Geothermal Research and Development Program--which is managed by the Geothermal Technology Division of DOE.
Category	These are the major divisions of the overall R&D Program. There are four efforts referred to as categories which parallel the resource types.
Task	Subdivisions of a category, each task is composed of an in-house and/or contracted effort which is managed by a field organization.
Project	Individual efforts, both in-house and under contract, that make up the task and category.
Activity	Separate efforts carried out in order to complete a Project.

The hierarchical structure of the Geothermal R&D Program is illustrated in Exhibit 2. The Program participants, identified in Exhibit 3, and 4, indicate which DOE field offices and national laboratories participate in each Category and Task of the Geothermal R&D Program.

Geothermal Research Funding

The funding history of the Department of Energy geothermal research activities is shown below.

Exhibit 2.
PROGRAM HIERARCHY
GEOTHERMAL R&D



ACTIVITIES

SUBACTIVITIES

**DEPARTMENT OF ENERGY
GEOTHERMAL RESEARCH FUNDING HISTORY (\$1000)**

	Actual 1984	Actual 1985	Actual 1986	Actual 1987	Actual 1988	Planned 1989
Geothermal Technology Program Budget	32,615	33,511	26,495	20,830	20,935	16,456

Overview of Projects

Each Project Summary Sheet contains: the title of the Project; the directing organization; the subcontractors; the point of contacts; recent funding; contract period; objectives; tasks; accomplishments; milestones; and titles of major topical reports.

Exhibit 3.
GEOHERMAL R&D PROGRAM PARTICIPANTS

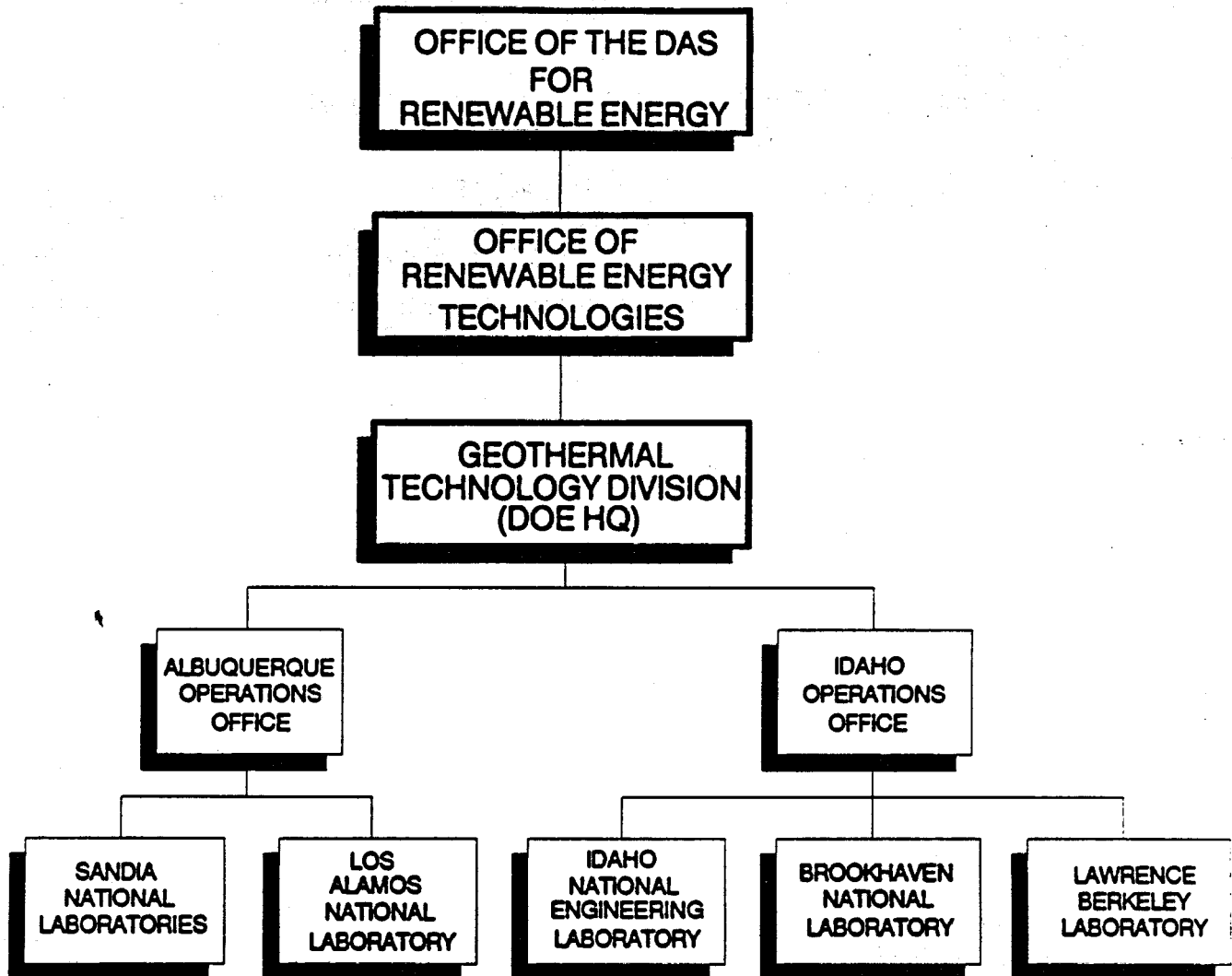


Exhibit 4. DOE OPERATIONS OFFICE AND NATIONAL LABORATORY PARTICIPATION IN THE GEOTHERMAL R&D PROGRAM

CATEGORY/ TASK	OPERATIONS OFFICE		NATIONAL LABORATORIES				
	ALO	IDO	BNL	INEL	LBL	LANL	SNL
HYDROTHERMAL							
Reservoir Technology		▲		●	○		
Hard Rock Penetration	▲		○				●
Conversion Technology		▲	○	●			
GEOPRESSURED		▲		●			
HOT DRY ROCK	▲					●	
MAGMA	▲						●

KEY

- ▲ Responsible Field Office
- Responsible National Laboratory
- Participant

OPERATIONS OFFICES

ALO -- Albuquerque
(Field Management Only)

IDO -- Idaho

NATIONAL LABORATORIES

BNL -- Brookhaven National Laboratory

INEL -- Idaho National Engineering Laboratory

LBL -- Lawrence Berkeley Laboratory

LANL -- Los Alamos National Laboratory

SNL -- Sandia National Laboratories

SECTION 2.0
HYDROTHERMAL RESEARCH
PROGRAM DESCRIPTIONS

2.0 HYDROTHERMAL RESEARCH PROGRAM DESCRIPTIONS

Description

The hydrothermal research category concentrates on improving technology associated with generating electricity from geothermal resources, especially liquid-dominated, moderate-temperature resources. Geothermal technology for low-temperature, direct-heat uses appears not to require a special research effort although many research tasks for hydrothermal electric systems have applications to direct-heat use.

The objective for hydrothermal research is to reduce the life-cycle cost of producing electricity from liquid-dominated, moderate- and high-temperature hydrothermal resources by today's standards 25 to 35 percent by 1992.

2.1 INDUSTRIALIZATION

Status

No new activities have been initiated, so all work is by carry-over funding.

Description

This task area supports ongoing reservoir studies in various states and provides technical assistance for direct heat project.

2.2 RESERVOIR TECHNOLOGY

Status

The three tasks include:

- a. **Reservoir Analysis:** Industry is using DOE-developed reservoir characterization techniques, but improvements are needed. A major impediment is the lack of reliable techniques for locating and mapping fractures.
- b. **Brine Injection Technology:** Injection is practiced by virtually all power plant operations, but industry remains concerned about reservoir cooling due to insufficient knowledge on siting injection wells. Removal of solids prior to injection creates large amounts of sludge for which hazardous waste disposal is required.
- c. **Exploration Technology:** Methods for locating and defining masked hydrothermal systems in young volcanic provinces are being developed. Although many geophysical techniques are promising, none have proven to be effective for locating hydrothermal systems in regions with abundant precipitation.

Description

Reservoir analysis research is designed to improve the techniques for characterizing reservoirs and mapping fractures. Several engineering techniques are being analyzed and refined to determine reservoir parameters, map reservoir boundaries and fractures, identify reservoir processes, and characterize boundary conditions. Reservoir modeling techniques are being improved to incorporate actual geothermal fluid properties in current computer codes.

Geothermal geoscience technologies were initially adapted from petroleum and mining industry exploration methods. In order to ensure prudent development decisions, better methods are needed for characterizing hot water reservoirs and predicting their behavior under both production and injection conditions.

Better reservoir definition is critical to obtaining reasonable-cost, long-term financing

for facilities that will provide a 20- to 30-year supply of energy. Application of the geosciences in conjunction with exploratory drilling and production testing has been very successful in characterizing hydrothermal areas such as the Imperial Valley and Cerro Prieto in Mexico.

The development and exploitation of a geothermal reservoir depends on an understanding of the reservoir's properties. The overall hydrogeological characteristics of the reservoir (e.g., lithology, structure, boundaries, fractured flow versus porous media, recharge) largely control the circulation of the geothermal fluids under natural conditions and during exploitation. The thermodynamic and geochemical properties of the formation fluids and mineral characteristics will govern, in large part, the processes occurring in the reservoir; however, the management of the energy resources (e.g., well locations and completions, rates of mass production and injection) is also an important factor controlling these processes, ultimately affecting the economic life of a geothermal field.

The primary focus of the Geothermal Program's R&D on reservoir analysis through FY 1987 has been:

- Characterization and mapping of reservoir parameters, processes, and spatial dimensions;
- Monitoring and prediction of reservoir changes during production lifetime;
- Fracture detection and mapping; and
- Field case studies.

The ability to control thermal and chemical effects of fluids injected into producing hydrothermal reservoirs is an established priority of the geothermal industry. Injection of spent geothermal fluid is required to maintain pressure in the producing zone of the reservoir and is usually dictated by environmental regulations. Injection plans must avoid premature breakthrough of cool fluids to producing wells. The Program places major emphasis on research which the geothermal industry has stated that it cannot perform.

Brine injection technology R&D addresses industry's needs by developing techniques to predict the chemical, thermal, and hydrologic effects of injection. These research activities will lead to more effective predictions of the effects of injection on a producing reservoir and efficient methods of heat extraction.

Existing geothermal exploration technologies leave a great many questions to be answered in their application to young volcanic environments. Some high-silica volcanic environments are believed to contain active subsurface magma chambers which would provide a heat source for geothermal systems. It is difficult with available technologies to locate and evaluate geothermal systems in young-volcanic environments. The objective of exploration technology is to develop analytical and interpretive tools for industry to use in locating and evaluating geothermal reservoirs within young volcanic regions.

During the past two years, this task has concentrated on the Cascades region of northwest U.S. where geothermal exploration is made difficult by shallow, cool ground water overlaying hot reservoirs. DOE has supported cost-shared research with industry in selected areas. Downhole geophysical well logs have been obtained from the projects, and the physical and chemical properties of the core retrieved have been analyzed. These data are being compared to surface geological, geochemical, and geophysical data for the purpose of developing and verifying new analytical tools and testing existing tools. Results to date indicate that more exact methods are needed for use in conjunction with surface electrical geophysical surveys because some of the low-resistivity zones found from surface surveys correlate with low-temperature alteration of volcanic rocks. A second important result is the measurement at three sites of the depth to which cold surface water circulates, which is the minimum depth that industry must drill to obtain reliable heat-flow measurements.

Task: Reservoir Technology
Project: Reservoir Analysis

GTD Manager: Marshall J. Reed

Predictive Modeling of Reservoir Behavior

Directing Organization:
Idaho Operations Office
785 DOE Place
Idaho Falls, ID 83402

Contractor:
Lawrence Berkeley Laboratory
Earth Science Div., Bldg. 50E
Berkeley, CA 94720

Project Manager:
Isamu Aoki

Principal Investigator:
Marcelo J. Lippmann

Telephone: (208) 526-0583(Com)
583-0583(FTS)

Telephone: (415) 486-5035(Com)
451-5035(FTS)

Contract Number: AC02-76SF00098

Contract Period: 10/17/83-Open

Contract Funding: FY 88 \$100,000.00

Description:

Develop modeling techniques for simulating the response of geothermal systems to different reservoir management programs, and to evaluate the generating capacity and longevity of these systems.

Activities/FY88 Milestones:

Develop a multi-feed zone wellbore simulator

Complete report on comparison of reservoir evaluations based on porous versus fractured medium representations

Further enhance numerical modeling capabilities for fluid and heat flow at conditions near the critical point of water, and for flow in fractured media

Carry out modeling studies of the Cerro Prieto and Los Azufres geothermal systems.

Accomplishments to Date:

Developed new numerical capabilities to study flow in fractured and porous media reservoirs, and to deal with the extreme nonlinearities of near-critical flows

Demonstrated the usefulness of computer modeling techniques in evaluating the impact of different production/injection scenarios on the short- and long-term behavior of geothermal systems

Developed methodologies to integrate geological, geophysical, geochemical and reservoir engineering data to establish the hydrogeologic regime in hydrothermal systems before and during exploitation.

Major Reports to Date:

Bjornsson, G., and Bodvarsson, G. S., 1987, "A Multi-Feedzone Wellbore Simulator". Geothermal Resources Council Trans., Vol. 11, pp. 503-507, LBL-23723.

Bodvarsson, G. S., 1988, "Reservoir Development Strategy for Hot Water Reservoirs with Emphasis on Reservoir Modeling," Geothermal Resources Council Bulletin, Vol. 17, No. 4, pp. 69-90.

Bodvarsson, G. S., Benson, S. M., Sigurdsson, OI, Stefansson, V., and Eliasson, e. T., 1984, "The Krafla Geothermal Field, Iceland: 1. Analysis of Well Test Data," Water Resour. Res., Vol. 38, No. 10, pp. 1007-1021, LBL-18268.

Bodvarsson, G. S., Pruess, K., Stefansson, V., Bjornsson, S., and Ojiambo, S. B., 1987, "The East Olkaria Geothermal Field, Kenya: 1. History Match with Production of Pressure Decline Data," Jour. Geophys. Res., Vol. 92, No. B1, pp. 521-539, LBL-20098.

Bodvarsson, G. S., Pruess, K., Stefansson, V., Bjornsson, S., and Ojiambo, s. B., 1987, "The East Olkaria Geothermal Field, Kenya: 2. Predictions of Well Performance and Reservoir Depletion," Jour. Geophys. Res., Vol. 92, No. B1, pp. 541-554, LBL-20099.

Bodvarsson, G. s., Pruess, K., Stefansson, V., Bjornsson, S., and Ojiambo, S. B., 1985, "A Summary of Modeling Studies of the East Olkaria Geothermal field, Kenya," Geothermal Resources Council 1985 International volume, pp. 295-301, LBL-19367.

Bodvarsson, G. S., Pruess, K., Stefansson, V., and Eliasson, e. T., 1984, "The Krafla Geothermal Field, Iceland: 2. The Natural State of the Reservoir," Water Resour. Res., Vol. 20, No. 11, pp. 1531-1544, LBL-16203.

Bodvarsson, G. S., Pruess, K., Stefansson, V., and Eliasson, E. T., 1984, "The Krafla Geothermal Field, Iceland: 3. The Generating Capacity of the Field," Water Resour. Res., vol. 20, No. 11, pp. 1545-1559, LBL-16203.

Cox, B. L., Pruess, K., and McKibbin, R., 1988, "Mathematical Modeling of Near-Critical Convection". Presented at 13th Workshop on Geothermal Reservoir Engineering, Stanford University, January 19-21, 1988.

Halfman, S.E., Lippmann, M. J., Bodvarsson, G. S., 1986, "Quantitative Model of the Cerro Prieto Field". Proc. Eleventh Workshop Geothermal Reservoir Engineering, Stanford, CA, report SGP-TR-92, pp. 127-134 LBL-20523.

Halfman, S. E., Lippmann, M. J., Zelwer, R., and Howard, J. H., 1984, "Geologic Interpretation of Geothermal Fluid Movement in Cerro Prieto Field, Baja California, Mexico". American Association of Petroleum Geologists Bull., Vol. 68, No. 1, pp. 18-30, LBL-15201.

Lai, C. H., Bodvarsson, G. S., and Witherspoon, P. A., 1986, "A second-Order Upwind Differencing Method for Non-Isothermal Chemical Transport in Porous Media," Jour. Numerical and Heat Transfer, Vol. 9, pp. 453-471 LBL-19998.

Lippmann, M. J., and Bodvarsson, G. S., 1983, "Numerical Studies of the Heat and Mass Transport in the Cerro Prieto Geothermal Field," Water Resour. Res., Vol. 19, No. 3, pp. 753-767, LBL-15509.

Lippmann, M. J., and Bodvarsson, G. S., 1985, "The Heber Geothermal Field, California: Natural State and Exploitation Modeling Studies," Jour. Geophys. Res., Vol. 90, No. B1, pp. 745-758, LBL-17572.

Pruess, K., 1988, "SHAFT, MULKOM, TOUGH: A Set of Numerical Simulators for Multiphase Fluid and Heat Flow," Geothermia, Rev. Mex. Geoenergia, Vol. 4, No. 1, pp. 185-202, LBL-24430.

Pruess, K., and Narasimhan, T. N., 1985, "A Practical Method for Modeling Fluid and Heat Flow in Fractured Porous Media," Soc. Pet. Engr. Jour., Vol. 25, No. 1, pp. 14-26, LBL-13487.

Pruess, K., Bodvarsson, G. S., Stefansson, V., and Eliasson, E. T., 1984, "The Krafla Geothermal Field, Iceland: 4. History Match and Prediction of Individual Well Performance," Water Resour. Res., Vol. 20, No. 11, pp. 1561-1584, LBL-16203.

Pruess, K., Wilt, M. J., Bodvarsson, G. S., and Goldstein, N. E., 1983, "Simulation and Resistivity Modeling of a Geothermal Reservoir with Waters of Different Salinity," Geothermics, Vol. 12, No. 4, pp. 291-307, LBL-14652.

Ripperda, M., and Bodvarsson, G. S., 1988, "Analysis of Internal Wellbore Flow". Presented at 13th Workshop on Geothermal Reservoir Engineering, Stanford University, January 19-21, 1988.

Sammel, E. A., and Benson, S. M., 1987, "An Analysis of the Hydrologic Effects of Proposed Test Drilling in the Winema National Forest near Crater Lake, Oregon," Geothermal Resources Council Trans., Vol. 11, pp. 293-303 LBL-23721.

Task: Reservoir Technology
Project: Reservoir Analysis

GTD Manager: Marshall Reed

Predictive Modeling of Reservoir Behavior

Directing Organization:
Idaho Operations Office
785 DOE Place
Idaho Falls, ID 83402

Contractor:
Department of Petroleum Engineering
Stanford Univ., 360 Mitchell Bldg
Stanford, CA 94305

Project Manager:
Isamu Aoki

Principal Investigator:
Roland Horne

Telephone: (208) 526-0583(Com)
583-0583(FTS)

Telephone: (415) 723-9595(Com)

Contract Number: AS07-84ID12529

Contract Period: 07/25/84-05/05/89

Contract Funding: FY 88 \$250,000.00

Description:

Development of modeling capability to predict reservoir performance from well testing and production history.

Activities/FY88 Milestones:

Development of well-testing techniques, and investigation into fundamental properties of reservoir behavior.

Accomplishments to Date:

Completed set of computer-generated type curves and used them extensively in fieldwide study.

Generated pressure transient models for several new reservoir configurations.

Adopted water influx methodology to geothermal reservoir analysis.

Major Reports to Date:

Aarstad, Knut, 1987, "Criteria for Determining Times for End of Transient Flow and Start of Pseudosteady State Flow," August 1987. SGP-TR-116

Ambastha, Anil K., and Jon S. Gudmundsson, Jon S., 1986, "Collection and Evaluation of Flowing Pressure and Temperature Data from Geothermal Wells," August 1986. SGP-TR-100

- Beal, Barry A., and Nunes, Craig S., 1984, "Velocity and Gravity Effects in Relative Permeability Measurements," June 1984. SGP-TR-82
- Brock, David C., 1986, "Compressibility Effects in Modeling Two-Phase Liquid Dominated Geothermal Reservoirs," June 1986. SGP-TR-102
- Dee, John, 1983, "A Reservoir Engineering Analysis of a Vapor-Dominated Geothermal Field," June 1983. SGP-TR-72
- del Socorro Salas, Beatriz, 1986, "Closed Chamber Well Test Including Frictional Effects," August 1986. SGP-TR-104
- Demski, Jay A., 1987, "Decline Curve Derivative Analysis for Homogeneous and Composite Reservoirs," June 1987. SGP-TR-110
- Economides, Michael, 1983, "Geothermal Reservoir Evaluation Considering Fluid Adsorption and Composition," September 1983. SGP-TR-68
- Eipper, Mary E., 1985, "Computer Generation of Type Curves," February 1985. SGP-TR-86
- Fox, Glenn, 1984, "Linear Boundary Detection Using Pressure Buildup Tests," June 1984. SGP-TR-83
- Granados, Eduardo, 1983, "Calcium Carbonate Deposition in Geothermal Wellbores: Miravalles Geothermal Field, Costa Rica," June 1983. SGP-TR-67
- Houze, Olivier P., 1983, "Infinite conductivity Fracture in a Naturally Fractured Reservoir". June 1983. SGP-TR-73
- Hunsbedt, A., Lam, S. T., and Kruger, Pl, 1984, "User's Manual for the 1-D Linear Heat Sweep Model," April 1984. SGP-TR-75
- Lam, Stephen T., Hunsbedt, Anstein, and Kruger, P., 1985, "Analysis of the Stanford Geothermal Reservoir Model Experiments Using the LBL reservoir Simulator," April 1985. SGP-TR-85
- Leaver, Jonathan D., 1986, "A Technical Review of Interference Testing with Application in the Ohaaki Geothermal Field," March 1986. SGP-TR-95
- Luetkehans, Jeralyn, 1988, "A Laboratory Investigation of Steam Adsorption in Geothermal Reservoir Rocks," March 1988. SGP-TR-115
- Macias-Chapa, Luis, 1985, "Multiphase, Multicomponent Compressibility in Petroleum Reservoir Engineering," March 1985. SGP-TR-88
- Marcou, John Andrew, 1985, "Optimizing Development Strategy for Liquid Dominated Geothermal Reservoirs," July 1985. SGP-TR-90
- Mateen, Khalid, 1983, "Slug Test Data Analysis in Reservoirs with Double Porosity Behaviour". September 1983. SGP-TR-70
- McLeroy, Priscilla G., 1986, "Transient Pressure Analysis in Strip Reservoirs with Linear Skin Discontinuities," January 1986. SGP-TR-97

Miller, Mark A., 1983, "Effect of Temperature on Oil-Water Relative Permeabilities of Unconsolidated and Consolidated Sands," June 1983. SGP-TR-64

Olsen, Gudmund, 1984, "Depletion Modeling of Liquid Dominated Geothermal Reservoirs," June 1984. SGP-TR-80

Ortiz-Ramirez, Jaime, 1983, "Two Phase Flow in Geothermal Wells: Development and Uses of a Computer Code," June 1983. SGP-TR-66

Sageev, Avrami, 1983, "Pressure Transient Analysis of Reservoirs with Linear or Internal Circular Boundaries," June 1983. SGP-TR-65

Saldana-Cortez, miguel-Angel, 1983, "Drillstem Test Data Analysis Considering Inertial and Frictional Wellbore Effects," November 1983. SGP-TR-69

Simmons, Jeffrey F., 1985, "Closed Chamber Well Test Analysis by Superposition of the Constant Pressure Cumulative Influx Solution to the Radial Diffusivity Equation," February 1985. GSP-TR-98

Sinner, Joseph r., 1986, "The Determination of a Volumetric Mixing Law for Use with the Neutron Porosity Logging Tool," June 1986. SgP-Tr-98

Surritt, Brenna L., 1986, "Computer Generation of Type Curves," June 1986. SGP-TR-105

Tavares, Carlos, 1986, "Discharge Analysis of Two-Phase Geothermal Well in Liquid-dominated Reservoirs". SGP-TR-101

Task: Reservoir Technology
Project: Reservoir Analysis

GTD Manager: Marshall J. Reed

Identification of Reservoir Processes

Directing Organization:
Idaho Operations Office
785 DOE Place
Idaho Falls, ID 83402

Contractor:
University of Utah Research Institute
391 Chipeta Way, Suite C
Salt Lake City, UT 84108

Project Manager:
Isamu Aoki

Principal Investigator:
P. Michael Wright

Telephone: (208) 526-0583(Com)
583-0583(FTS)

Telephone: (801) 524-3439(Com)
588-3439(FTS)

Contract Number: AC07-85ID12489

Contract Period: 10/25/87-Open

Contract Funding: FY 88 \$220,000.00

Description:

Objectives include identification and interpretation of geology, geophysics, geochemistry, and hydrology for the synthesis of knowledge about reservoir processes

Activities/FY88 Milestones:

Develop hydrogeochemical models of the fracture dominated geothermal systems at Coso, Heber, and Los Azufres from fluid inclusion, fluid chemistry and isotropic data.

Develop methods to interpret borehole breakouts to evaluate in-situ stresses and their origin in geothermal systems. Relate stress fields to fluid flow within the reservoir.

Calibrate thermally-induced transformation of smectite to illite for use as a mineral geothermometer.

Use of physical properties laboratory to characterize the electrical resistivity, magnetic susceptibility, and induced polarization response of geothermally-altered rocks.

Determine the location of major structures at Los Azufres from aeromagnetic data.

Accomplishments to Date:

Demonstrated use of injection-backflow method to investigate scaling process in reservoir.

Constructed physical properties laboratory for measurement of electrical and magnetic properties of geothermally altered rocks.

Developed hydrogeochemical model for low-permeability geothermal systems applicable to volcanic systems in the Cascade mountain ranges.

Produced detailed model of caprock development in the Salton Sea geothermal field.

Defined alteration mineralogy and structural model of the Valles Caldera geothermal system

Major Reports to Date:

Adams, M.C., Lemie, M., Moore, J.N., and Johnson, S.D., 1988, "Fluid Chemistry and Hydrology of the Heber Geothermal System, California". Transactions, Geothermal Resources Council, in press.

Adams, M.C., and Moore, J. N., 1985, "Geothermal Systems in Mountainous Terrains: An Example for Meager Mountain". American Jour. of Science, v. 287, p. 720-755.

Ballentyne, J., and Moore, J.M., 1988, "Arsenic Geochemistry in Geothermal Systems". *Geochemica et Cosmochemica Acta*, v. 52, p. 475-483.

Christensen, O.D., Capuano, R. C., and Moore, J.N., 1983, "Trace Element Distributions in an active Hydrothermal Systems, Roosevelt Hot Springs Thermal Area, Utah", *Journal of Volcanology and Geothermal Research*, v. 16, p. 99-129.

Cole, D.R., 1983, "Chemical and isotropic investigations of warm springs associated with normal faults". *Journal of Volcanology and Geothermal Research*, v. 16, p.65-98.

Hulen, J.B., and Nielson, D.L., 1986, "Hydrothermal Alteration in the Baca Geothermal System, Redondo Dome, Valles Caldera, New Mexico". *Journal Geophysical Research*, v. 91, p. 1867-1886.

Moore, J.N., and Adams, M.C., 1988, "Evolution of the Thermal Cap in Two Boreholes from the Salton Sea Geothermal System, California". *Geothermics*, in press.

Nielson, D.L., and Hulen, J. B., 1984, "Internal Geology and Evaluation of the Redondo Dome, Valles Caldera, New Mexico". *Journal of Geophysical Research*, v. 89, p.8695-8711.

Nielson, D.L., Evans, S.H., Jr., and Sibbett, B.S., 1985, "Magmatic, Structural, and Hydrothermal Evolution of the Mineral Mountains Intrusive Complex, Utah". *Geological Society of America Bulletin*, v.97, p.765-777.

Ross, H.P., and Moore, J.N., 1985, "Geophysical Investigations of the Cove Fort-Sulphurdale Geothermal System, Utah". *Geophysics*, v. 50, p.1732-1745.

Task: Reservoir Technology
Project: Reservoir Analysis

GTD Manager: Marshall Reed

Identification of Reservoir Processes

Directing Organization:
Idaho Operations Office
785 DOE Place
Idaho Falls, ID 83402

Contractor:
Lawrence Berkeley Laboratory
Earth Science Division, Bldg. 50E
Berkeley, CA 94720

Project Manager:
Isamu Aoki

Principal Investigator:
Marcelo Lippmann

Telephone: (208) 526-0583(Com)
583-0583(FTS)

Telephone: (415) 486-5035(Com)
451-5035(FTS)

Contract Number: AC03-76SF00098

Contract Period: 10/17/83-Open

Contract Funding: FY 88 \$225,000.00

Description:

Analyze and refine techniques for identifying reservoir processes and evaluating their impact on the behavior of hydrothermal systems.

Activities/FY88 Milestones:

Prepare report on fluid flow and heat transfer near the critical point of pure water

Analyze field data and model partitioning of oxygen-18 between vapor and liquid phases in geothermal reservoirs

Study the effects of liquid-steam counterflow on well testing data from boiling geothermal reservoirs and evaluate the effects of non-condensable gases in reservoirs with counterflow

Develop an analytical solution for internal flow in geothermal wells

Analyze well test data to identify processes that cause an increase in permeability during the injection of colder brines into geothermal reservoirs.

Complete self-potential resurvey of the East Mesa geothermal field to ascertain whether production/injection-related effects exist

Carry out high-frequency seismic monitoring of fluid injection at The Geysers

Accomplishments to Date:

Developed basic understanding of fluid, heat and chemical species transport in permeable (porous and fractured) media

Evaluated the relative importance of different reservoir phenomena (e.g., heat pipe effects, conductive enthalpy enhancement, relative permeability effects) under single-phase (compressed liquid, steam) or two-phase conditions, on the behavior of hydrothermal systems

Carried out field (geophysical and reservoir engineering) studies to test techniques and tools for identifying and quantifying subsurface processes associated with production and injection of geothermal fluids

Major Reports to Date:

Benson, S.M., and Bodvarsson, G.S., 1986, "Nonisothermal Effects during Injection and Falloff Tests", SPE Formation Evaluation, Vol. 1, No. 1, pp. 53-63, LBL-14270.

Benson, S.M., and Lai, C. H., 1986, "Analysis of Interference Data in a Highly Heterogeneous and Naturally Fractured Geothermal Reservoir". SPE Formation Evaluation, Vol. 1, No. 3, pp. 236-248, LBL-17450.

Benson, S.M., Daggett, J. S., Iglesias, E., Arellano, V., and Ortiz-Ramirez, J., 1987, "Analysis of Thermally Induced Permeability Enhancement in Geothermal Injection Wells". Proc. Twelfth Workshop Geothermal Reservoir Engineering, Stanford, CA, report SGP-TR-109, pp. 57-66, LBL-23022.

Bodvarsson, G. S., and Cox, B. L., 1986, "Numerical Studies of Gravity Effects in Two-Phase Reservoirs". Geothermal Resource Council Trans., Vol. 10, pp. 429-436, LBL-21935.

Bodvarsson, G.S., and Gaulke, S. W., 1987, "Effects of Noncondensable Gases on Fluid Recovery in Fractured Geothermal Reservoirs". SPE Reservoir Engineering, Vol. 2, No. 3, pp. 335-342, LBL-21112.

Bodvarsson, G. S., Cox, B. L., and Ripperda, M. A., 1988, "Effects of Steam-Liquid Counterflow on Pressure Transient Data from Two-Phase Geothermal Reservoirs". SPE Reservoir Engineering (in press).

Cox, B. L., and Bodvarsson, G. S., 1986, "Preliminary Studies of Two-Phase Effects on Pressure Transient Data". Proc. Eleventh Workshop Geothermal Reservoir Engineering, Stanford, CA, report SGP-TR-93, pp. 7-14, LBL-21249.

D'Amore, F., and Pruess, K., 1986, "Correlations Between Vapor Saturation, Fluid Composition, and Well Decline in Larderello". Geothermics, Vol. 15, No. 2, pp. 167-183, LBL-18899.

Gaulke, S. W., and Bodvarsson, G. S., 1987, "Analysis of Pressure, Enthalpy and CO₂ Transients in Well BR21, Ohaaki, New Zealand". Geothermal Resources Council Trans., Vol. 11, pp. 535-539, LBL 23718.

Goldstein, N.E., Sasaki, Y. and Wilt, M.J., 1985. "Two-dimensional inversion of resistivity monitoring data from the Cerro Prieto geothermal field". Trans. Geother. Resour. Council, V.9, pt. II, pp.17-25.

Lippmann, M. J., and Bodvarsson, G. S., 1988, "Convective Heat Transport in Geothermal Systems". Revista Brasileira de Geofisica (in press), LBL-21984.

McKibbin, R., and Pruess, K., 1988, "Some Effects of Non-Condensable Gas in Geothermal Reservoirs with Steam-Water Counterflow". Presented at 13th Workshop on Geothermal Reservoir Engineering, Stanford University, January 19-21, 1988.

Narasimhan, T. N., and Goyal, K. P., 1984, "Subsidence Due to Geothermal Fluid Withdrawal". Geol. Soc. Am. Review in Engineering Geology. Vol. VI, pp. 35-48, LBL-10967.

O'Sullivan, M. J., Bodvarsson, G. S., Pruess, K., and Blakeley, M. R., 1985, "Fluid and Heat Flow in Gas-Rich Geothermal Reservoirs". Soc. Pet. Engr. Jour., Vol. 25, No. 2, pp. 215-226, LBL-16329.

Pruess, K., 1985, "A Quantitative Model of Vapor-Dominated Geothermal Reservoirs as Heat Pipes in Fractured Porous Rock". Geothermal Resources Council Trans., Vol. 9, II, pp. 353-361, LBL-19366.

Pruess, K., Calore, C., Celati, R., and Wu, Y. S., 1987, "An Analytical Solution for Heat Transfer at a Boiling Front Moving through a Porous Medium". Int. Jour. of Heat and Mass Transf. Vol. 30, No. 12, pp. 2595-2602, LBL-22513.

Pruess, K., Celati, C., Calore, C., and Cappetti, G., 1987, "On Fluid and Heat Flow in Deep Zones of Vapor-Dominated Geothermal Reservoirs". Proc. Twelfth Workshop Geothermal Reservoir Engineering, Stanford, CA SGP-TP_109, pp. 89-96, LBL-22810.

Verma, A., and Pruess, K., 1986, "Enhancement of Steam Phase Relative Permeability Due to Phase Transformation Effects in Porous Media". Proc. Eleventh Workshop Geothermal Reservoir Engineering, Stanford, CA, report SGP-TR-93, pp. 223-224, LBL-21027.

Wilt, M.J. and Goldstein, N.E., 1984, "Interpretation of dipole-dipole resistivity monitoring data at Cerro Prieto". Geothermics, V. 13, pp. 13-26.

Task: Reservoir Technology
Project: Reservoir Analysis

GTD Manager: Marshall Reed

Fracture Detection and Mapping

Directing Organization:
Idaho Operations Office
785 DOE Place
Idaho Falls, ID 83402

Contractor:
University of Utah Research Institute
391 Chipeta Way, Suite C
Salt Lake City, UT 84108

Project Manager:
Isamu Aoki

Principal Investigator:
P. Michael Wright

Telephone: (208) 526-0583(Com)
583-0583(FTS)

Telephone: (801) 524-3439(Com)
588-3439(FTS)

Contract Number: AC07-85ID12489

Contract Period: 10/25/87-5/5/90

Contract Funding: FY 88 \$200,000.00

Description:

The objectives are the development and verification of computer-based methods to evaluate the use of borehole geophysical techniques for locating fractures and permeable zones in geothermal systems. Accomplishment of early objectives lead to design, development, and field testing of instrumentation for surface-to-borehole, borehole-to-surface, and borehole-to-borehole surveys.

Activities/FY88 Milestones:

Extend numerical model results for borehole arrays.

Complete second stage design for multi-array borehole fracture detection instrumentation.

Construct first generation model of field instrumentation.

Distribute technical reports.

Accomplishments to Date:

State-of-the-art review completed, evaluated.

Theoretical responses have been determined for the more promising electrical and electromagnetic methods.

Developed algorithms for numerical models and completed numerical calculations for most applicable methods and arrays, results published.

Design completed for multi-method, multi-array borehole geophysical instrumentation.

Major Reports to Date:

Beasley, C.W., and Ward, S.H., 1986, "Three-dimensional mise-a-la-masse modeling applied to mapping fracture zones". Geophysics, v.51, p.98-113.

Green, D.J., and Ward, S.H., 1986, "Report on preliminary design for multi-array borehole electrical geophysical method". DOE/SAN 1219623, ESL-TR.

LaBrecque, D.J., and Ward, S. H., 1988, "The effect of well casing on 3-D interpretation of borehole resistivity data". SEG ann. mtg. ext. abs. (in Press).

LaBrecque, D.J., 1988, "Design of a borehole-to-surface resistivity survey for the magma deep exploration well". GRC Trans, v. 12 (in press).

Ross, J.P., and Ward, S.H., 1984, "Borehole electrical geophysical methods- a review of the state-of-the-art and preliminary evaluation of the application to fracture mapping in geothermal systems". DOE/SAN/12196-2, ESL Rpt. No. 141, 61 p.

West, R.C., and Ward, S. H., 1988, "The borehole controlled source audiomagnetotelluric response of a three-dimensional fracture zone". Geophysics, v. 53, p. 215-230.

Wright, P.M., and Ward, S.H., 1986, "Borehole geophysical techniques for defining permeable zones in geothermal systems". Geothermal Resources Council, Trans., v. 10, p. 253-258.

Yang, F.W., and Ward, S. H., 1985, "Short Note: On sensitivity of surface-to-borehole resistivity measurements to the attitude and the depth to center of a three-dimensional spheroid". Geophysics, v. 50, p.1173-1178

Yang, F.W., and Ward, S.H., 1985, "Single borehole and cross-borehole resistivity anomalies of thin ellipsoids and spheroids". Geophysics, v. 50, p.637-655.

Zhao, J. X., Rijo, L., and Ward, S. H., 1986, "The effects of geologic noise on cross-borehole electrical surveys". Geophysics, v. 51, p. 1978-1991.

Task: Reservoir Technology
Project: Reservoir Analysis

GTD Manager: Marshall Reed

Fracture Detection and Mapping

Directing Organization:
Idaho Operations Office
785 DOE Place
Idaho Falls, ID 83402

Contractor:
Lawrence Berkeley Laboratory
Earth Science Division, Bldg 50E
Berkeley, CA 94720

Project Manager:
Isamu Aoki

Principal Investigator:
Marcelo J. Lippman

Telephone: (208) 526-0583(Com)
583-0583(FTS)

Telephone: (415) 486-5035(Com)
451-5035(FTS)

Contract Number: AC03-76SF00098

Contract Period: 10/17/83-Open

Contract Funding: FY 1988 \$175,000.00

Description:

Develop and test downhole-geophysical methods for detecting and mapping fractures in geothermal systems.

Activities/FY88 Milestones:

Complete the numerical evaluation for detecting and resolving single and multiple fracture zones by means of surface-to-borehole and crosshole electromagnetics in the audio frequency domain.

Accomplishments to Date:

Developed numerical codes to calculate the electromagnetic response due to thin fracture zones of arbitrary orientation and dimensions.

Evaluated geophysical and engineering constraints for crosshole electromagnetic systems.

Applied P- and S-wave vertical seismic profiling techniques to map fracture orientations at The Geysers and at the Salton Sea geothermal fields.

Major Reports to Date:

Daley, T.M., McEvilly, T.V. and Majer, E.L., 1988, "Analysis of S-wave data from the Salton Sea Scientific Drilling Project". Jour. Geophys. Res. (in press).

Dallal, S.L., 1985, "Electromagnetic scale modeling for the detection of fractures and cavities". Univ. of California at Berkeley, M.S. thesis, Engineering.

Majer, E.L., McEvilly, T.V., Eastwood, F.W., and Myer, L.R., 1988, "Fracture detection using P- and S-wave vertical seismic profiling at The Geysers". Geophysics, V. 53, No. 1, pp. 76-84.

Zhou, Q., et al., 1987. "Fracture detection using subsurface electromagnetic techniques, in Farmer, I.W." et al., eds., Rock Mechanics: Proc. 28th U.S. Symposium, A.A. Balkema, Rotterdam, pp. 5-17.

Task: Reservoir Technology
Project: Exploration Technology

GTD Manager: Marshall Reed

Geophysical Methods to Locate Reservoirs

Directing Organization:
Idaho Operations Office
785 DOE Place
Idaho Falls, ID 83402

Contractor:
University of Utah Research Institute
391 Chipeta Way, Suite C
Salt Lake City, UT 84108

Project Manager:
Isamu Aoki

Principal Investigator:
P. Michael Wright

Telephone: (208) 526-0583(Com)
583-0583(FTS)

Telephone: (801) 524-3439(Com)
588-3439(FTS)

Contract Number: AC07-85ID12489

Contract Period: 10/25/84-05/05/90

Contract Funding: FY 88 \$110,000.00

Description:

Objectives include the development of numerical modeling, development of techniques for noise reduction of magnetotelluric data, determination of electrical properties of drill core from the Cascades, and the integrated study of observed surface geophysical data, physical property results, and geologic data from the Cascade volcanic province.

Activities/FY88 Milestones:

Determine physical properties of Cascades drill core.

Refine 3-D magnetotelluric modeling algorithms.

Upgrade magnetotelluric field recording system.

Interpret Long Valley MT data.

Acquire and interpret aeromagnetic data at Los Azufres

Accomplishments to Date:

Determined electrical resistivity, magnetic susceptibility, and induced polarization properties for Cascade drill core.

Identified IP response as possible discriminator of geothermal vs low grade alteration in Cascades.

Completed interpretation of Long Valley MT data.

Completed development and deployment of UURI MT field system.

Completed new MT modeling techniques.

Completed fixed wing and helicopter aeromagnetic surveys at Los Azufres.

Major Reports to Date:

Ross, H. P., and Moore, J. N., 1985, "Geophysical investigations of the Cove Fort-Sulphurdale geothermal system, Utah", *Geophysics*, v. 50, p. 1732-1745.

Tripp, A. C., Lemieux, M. M., Wright, p. M., and Moore, J. N., 1988, "Induced polarization response of related Cascade core samples". *GRC Trans.*, v. 12, (in press).

Wannamaker, P. e., 1983, "Resistivity sturcture of the Northern Basin and Range," in *GRC Spec. Rept. 13*, "The role of heat in the development of energy and mineral resources in the northern Basin and Range Province," p. 345-362.

Wannamaker, P. E., Stodt, J. A., and Rijo, L., 1985, "PW2D Finite element program for solution of magnetotelluric responses of Two-dimensional earth resistivity structure:" *User Documentation: DOE/SAN/12196-13*, *ESL Rept. No. 158*, 40 p.

Wannamaker, P. E., 1988, "Magnetotelluric profile across Long Valley caldera", in *Proc. of the symposium on the Long Valley caldera: a pre-drilling data review*, ed. by N. L. Goldstein, *LBL Rept. 23940*, p. 150-158.

Ward, S. H., 1983, "Geophysical studies of active geothermal systems in the northern Basin and Range," in *GRC Spec. Rept. No. 13*, "The role of heat in the development of energy and mineral resources in the northern Basin and Range Province," p. 121-158.

Wright, P. M., 1985, "Application of geophysics for concealed hydrothermal systems in volcanic terrains". *GRC Trans.*, v. 9, p. 423-429.

Wright, P. M., Ward, S. H., Ross, H. P., and West, R., 1985, "State-of-the-art geophysical exploration for geothermal resources". *Geophysics*, v. 50, p. 2666-2699.

Wright, P. M., and Nielson, D. L., 1986, "Electrical resistivity anomalies at Newberry volcano, Oregon: Comparison with alteration mineralogy in GEO Corehole N-1," *GRC Trans.*, v.10, p. 247-252.

Task: Reservoir Technology
Project: Exploration Technology

GTD Manager: Marshall Reed

Integrated Model for Exploration

Directing Organization:
Idaho Operations Office
785 DOE Place
Idaho Falls, ID 83402

Contractor:
University of Utah Research Institute
391 Chipeta Way, Suite C
Salt Lake City, UT 84108

Project Manager:
Isamu Aoki

Principal Investigator:
P. Michael Wright

Telephone: (208) 526-0583(Com)
583-0583(FTS)

Telephone: (801) 524-3439(Com)
588-3439(FTS)

Contract Number: AC07-85ID12489

Contract Period: 10/25/87-05/05/90

Contract Funding: FY 88 \$160,000.00

Description:

Synthesis of geothermal knowledge to target the environment of hydrothermal systems.

Activities/FY88 Milestones:

Application of hydrogeochemical models developed through cooperative DOE-Industry programs to exploration.

Use results of rock property studies to define characteristics of geothermal targets in volcanic terrains.

Organize and edit a case-studies textbook on geothermal exploration and development.

Conduct workshops on geothermal exploration for third world countries

Conduct geothermal exploration in St. Lucia and Mexico.

Accomplishments to Date:

Successfully sited discovery well in St. Lucia based on integrated model approach.

Prepared case studies of Roosevelt Hot Springs, San Emidio, Cove Fort.

Analyzed several possible uses of exploration methods and strategies.

Major Reports to Date:

Sorey, M., Reed, M., Foley, D., and Renner, J., 1983, "Low-temperature geothermal resources in the central and eastern United States". USGS, Circular 892, p. 51-66. ESL-83005-TR.

Struhsacker, E., Smith, C., and Capuano, R. M., 1983, "An evaluation of exploration methods for low-temperature geothermal systems in the Artesian City Area, Idaho". Geological Society of American Bulletin, v. 94, p. 58-79.

Ward, S. H., 1983, "Geophysical Studies of active geothermal systems in the Basin and Range". Geothermal Resources Council Special Report No. 13, p. 121-157.

Wright, P. M., Ward, S. H., Ross, H. P., and West, R., 1985, "State-of-the-art geophysical exploration for geothermal resources". Geophysics, v. 50, p. 2666-2699.

Task: Reservoir Technology
Project: Exploration Technology

GTD Manager: Marshall J. Reed

Geophysical Methods to Locate Reservoirs

Directing Organization:
Idaho Operations Office
785 DOE Place
Idaho Falls, ID 83402

Contractor:
Lawrence Berkeley Laboratory
Earth Science Div., Bldg. 50E
Berkeley, CA 94720

Project Manager:
Isamu Aoki

Principal Investigator:
Marcelo J. Lippmann

Telephone: (208) 526-0583(Com)
583-0583(FTS)

Telephone: (415) 486-5035(Com)
451-5035(FTS)

Contract Number: AC03-76SF00???

Contract Period: 10/17/83-Open

Contract Funding: FY 88 \$200,000.00

Description:

Develop, test, and demonstrate surface geophysical techniques and interpretation methods for locating fractured hydrothermal systems

Activities/FY88 Milestones:

Complete analysis on 3-dimensional interpretation of gravity data

Accomplishments to Date:

Demonstrated the use of surface strain analysis to locate midcrustal heat sources

Conducted a major symposium on the Long Valley caldera

Demonstrated the use of active seismic and gravity to delineate faults and alteration related to geothermal fields.

Demonstrated the use of passive seismic (natural earthquakes) to map the two-phase zones at The Geysers

Demonstrated the use of controlled-source electromagnetics and magnetotellurics to locate reservoir rocks in the Basin and Range

Major Reports to Date:

Blakeslee, S., 1984, "Seismic discrimination of a geothermal field: Cerro Prieto," Trans. Geotherm. Resour. Council, V. 8, pp. 183-188.

Carle, S.F. and Goldstein, N.E., 1987, "Gravity and fault structures, Long Valley caldera, California," Trans. Geoth. Res. Council, V. 11, pp. 327-332.

Goldstein, N.E., ed., 1987, "Proceedings of the Symposium on the Long Valley caldera," Lawrence Berkeley Laboratory report LBL-23940, 195 p

Goldstein, N.E. and Carle S., 1986, "Faults and gravity anomalies over the East Mesa hydrothermal-geothermal system," Trans. Geoth. Res. Council, V.10, pp. 223-228.

O'Connell, D.R., 1986, "Seismic velocity structure and microearthquake source properties at The Geysers, California, geothermal area," Lawrence Berkeley Laboratory report LBL-22280.

Severson, L., 1987, "Interpretation of shallow crustal structure of the Imperial Valley, California, from seismic reflection profiles," Lawrence Berkeley Laboratory report LBL-23888.

Vasco, D.W, Johnson, L.R., and Goldstein, N.E., 1988, "Using surface displacement and strain to constrain deformation at depth, with an application to Long Valley caldera, CA", Jour. Geophys. Res., V. 93, pp. 3232-3242.

Wilt, M.J. et al., 1983, "Experience with the EM-60 electromagnetic system for geothermal exploration in Nevada," Geophysics, V. 48, pp. 1090-1101.

Task: Reservoir Technology
Project: Brine Injection Technology

GTD Manager: Marshall Reed

Tracer Development and Interpretation

Directing Organization:
Idaho Operations Office
785 DOE Place
Idaho Falls, ID 83402

Contractor:
Idaho National Engineering Laboratory
P.O. Box 1625
Idaho Falls, ID 83415

Project Manager:
Isamu Aoki

Principal Investigator:
Joel Renner

Telephone: (208) 526-0583(Com)
583-0583(FTS)

Telephone: (208) 526-9824(Com)
583-9824(FTS)

Contract Number: AC07-76ID01570

Contract Period: 01/01/82-Open

Contract Funding: FY 88 \$100,000.00

Description:

The objective of this project is to develop geothermal tracers and techniques for tracer injection, sampling and interpretation as applied to the determination of reservoir physical properties and fluid interactions in the reservoir.

Activities/FY88 Milestones:

Predict the range of tracer dispersion in tests at the Dixie Valley reservoir as a basis for design of tracer injection.

Accomplishments to Date:

Models have been used to estimate the dispersion of tracer in the Dixie Valley reservoir based on various production-injection well combinations and reservoir assumptions.

Studies related tracer returns in injection-backflow tests East Mesa and Raft River to injection volume, formation characteristics and background reservoir flow patterns.

Major Reports to Date:

Russel, B.F., Hull, L.C., and Downs, W.F., "Response of East Mesa and Raft River Reservoirs to Injection-Backflow Testing". Proceedings: Ninth Geothermal Reservoir Engineering Workshop, Stanford University, SGP-TR-74, Stanford, CA, 1983.

Task: Reservoir Technology
Project: Brine Injection Technology

GTD Manager: Marshall Reed

Tracer Development and Interpretation

Directing Organization:
Idaho Operations Office
785 DOE Place
Idaho Falls, ID 83402

Contractor:
University of Utah Research Institute
391 Chipeta Way, Suite C
Salt Lake City, UT 84108

Project Manager:
Isamu Aoki

Principal Investigator:
P. Michael Wright

Telephone: (208) 526-0583(Com)
583-0583(FTS)

Telephone: (808) 524-3439(Com)
588-3439(FTS)

Contract Number: AC07-85ID12489

Contract Period: 10/25/87-05/05/90

Contract Funding: FY 88 \$153,000.00

Description:

Development of tracers and interpretation methods to track transport of injected fluid.

Activities/FY88 Milestones:

Determine temperature dependence of fluorescein decay.

Develop enrichment techniques for lowering detection limits of hydrocarbon tracers.

Conduct laboratory experiments to define levels of preservatives needed to prevent biodegradation of tracers in sample bottles.

Prepare reports on analytical method development for tracers, tracer stabilities, and fluorescein kinetics.

Conduct field test of newly-developed tracers at the Pleasant Bayou geopressured well and the Dixie Valley geothermal field.

Accomplishments to Date:

Tested 39 hydrocarbon compounds as potential geothermal tracers. Compounds were tested to evaluate the effects of temperature, time, fluid composition, presence of oxygen, pH, and rock adsorption and catalysis.

Identified 15 compounds as stable under high-temperature conditions.

Tested all of the non-radioactive conventional tracers in an injection-backflow test at the East Mesa geothermal field.

Successfully used tracers to track the progress and efficiency of a scale-inhibitor injected into the geopressured Pleasant Bayou Well using fluorescein and benzenesulfonic acid.

Major Reports to Date:

Adams, M.C., 1985, "Tracer stability and Chemical Changes in an Injected Geothermal Fluid during East Mesa Injection Testing". Proceedings, 10th Workshop on Geothermal Reservoir Engineering, Stanford University, P. 247-252.

Adams, M.C., Ahn, J.H., Bentley, H., Moore, J.N., and Veggeberg, S., 1986, "Devirvitized Hydrocarbons as Geothermal Tracers". Geothermal Resources Council Transactions, v. 10, p. 415-420.

Adams, M.C., Ahn, J.H., Bentley, H., Moore, J.N., and Beggeberg, S., 1986, "Tracer Developments: Results of Experimental Studies". 11th Workshop on Geothermal Reservoir Engineering, Stanford University p. 97-102.

Capuano, R.M., Adams, M.C., and Wright, P.M., 1983, "Tracer Recovery and Mixing from two Geothermal Injection-Backflow Studies". Proceedings, 9th Workshop on Geothermal Reservoir Engineering, Stanford University, p. 299-304.

Wright, P.M., Capuano, R.M., Adams, M.C., and Moore, J.N., 1984, "Uses of Geochemistry with Injection-Backflow Testing in Geothermal Reservoir Studies". Geothermal Resources Council Transactions, v. 8, p. 349-354.

Task: Reservoir Technology
Project: Brine Injection Technology

GTD Manager: Marshall Reed

Geophysical Methods for Injection Monitoring

Directing Organization:
Idaho Operations Office
785 DOE Place
Idaho Falls, ID 83402

Contractor:
University of Utah Research Institute
391 Chipeta Way, Suite C
Salt Lake City, UT 84108

Project Manager:
Isamu Aoki

Principal Investigator:
P. Michael Wright

Telephone: (208) 526-0583(Com)
583-0583(FTS)

Telephone: (801) 524-3439(Com)
588-3439(FTS)

Contract Number: AC07-85ID12489

Contract Period: 10/25/87-05/05/90

Contract Funding: FY 88 \$30,000.00

Description:

The objective of this project is to examine the feasibility of using surface geophysical methods to monitor the flow of injected fluids. The two methods most appropriate to this study appear to be the self-potential and electrical resistivity methods.

Activities/FY88 Milestones:

Conduct SP field experiment during injection.

Planned experiment to measure the SP effect in detail at frequent intervals at a large number of field sites.

Accomplishments to Date:

Extended basic theory for self-potential fields resulting from cross-coupled fluid flow, establishing the state-of-the-art.

An advanced cross-coupled fluid flow model was developed for the modeling and interpretation of self-potential data.

Existing algorithms were used to predict electrical resistivity results.

Completed field self-potential and electrical resistivity surveys during injection studies at Raft River and East Mesa. Demonstrated that only very low-amplitude anomalies occur.

Major Reports to Date:

Sill, W. R., 1983, "Interpretation of SP measurements during injection tests at Raft River, Idaho". DOE/ID/12079-103, ESL Rept. No. 120, 20 p.

Sill, W.R., 1983, "Resistivity measurements before and after injection test No. 5 at Raft River KGRA, Idaho". DOE/ID/12079104, ESL Rept. No. 121, 14 p.

Sill, W.R., 1983, "Self-potential modeling from primary flows". Geophysics, v.48, p. 76-86.

Task: Reservoir Technology
Project: Brine Injection Technology

GTD Manager: Marshall Reed

Modeling Injected Fluid Migration

Directing Organization:
Idaho Operations Office
785 DOE Place
Idaho Falls, ID 83402

Contractor:
Department of Petroleum Engineering
Stanford Univ., 360 Mitchell Bld
Stanford, CA 94305

Project Manager:
Isamu Aoki

Principal Investigator:
Roland Horne

Telephone: (208) 526-0583(Com)
583-0583(FTS)

Telephone: (415) 723-9595(Com)

Contract Number: AS07-84ID12529

Contract Period: 07/25/84-05/05/89

Contract Funding: FY 88 \$125,000.00

Description:

Development of modeling capability to predict flow of injected fluid through reservoirs.

Activities/FY88 Milestones:

Experimental program to identify transport mechanisms governing flow of tracers through fractures.

Accomplishments to Date:

Completed experimental studies of tracer adsorption and dispersion.

Constructed a physical model to represent flow through fractured rock.

Major Reports to Date:

Al-Riyami, Yathrib M., 1986, "Thermal Stability of Fluorescent Dyes as Geothermal Tracers". December 1986. SGP-TR-106

Bouett, Lawrence W., 1986, "The Effect of Transverse Mixing on Tracer Dispersion in a Fracture". June 1986. SGP-TR-103

Chrysikopoulos, Constantinos Vassiliou, and Kruger, Paul, 1986, "Chelated Indium Activable Tracers for Geothermal Reservoirs." June 1986. SGP-TR-99

Gilardi, John R., 1984, "Experimental Determination of the Effective Taylor Dispersivity in a Fracture". June 1984. SGP-54-78

Johns, Robert Anthony, 1987, "Injection Through Fractures". May 1987.
SGP-TR-110

Pulskamp, J. Flint, 1985, "The Generation of Response Curves from
Laboratory Tracer Flow Experiments". December 1985. SGP-TR-94

Walkup, Gardner William, Jr., 1984, "Characterization of Retention
Processes and Their Effect on the Analysis of Tracer Tests in Fractured
Reservoirs". June 1984. SGP-TR-77

Task: Reservoir Technology
Project: Brine Injection Technology

GTD Manager: Marshall Reed

Modeling Injected Fluid Migration

Directing Organization:
Idaho Operations Office
785 DOE Place
Idaho Falls, ID 83402

Contractor:
Lawrence Berkeley Laboratory
Earth Science Div., Bldg. 50E
Berkeley, CA 94720

Project Manager:
Isamu Aoki

Principal Investigator:
Marcelo J. Lippmann

Telephone: (208) 526-0583(Com)
583-0583(FTS)

Telephone: (415) 486-5035(Com)
451-5035(FTS)

Contract Number: AC03-76SF00098

Contract Period: 10/17/83-Open

Contract Funding: FY 88 \$250,000.00

Description:

Develop and demonstrate modeling techniques for predicting and monitoring the movement of injected geothermal fluids in the subsurface

Activities/FY88 Milestones:

Evaluate the applicability of different well testing and analysis methods to actual field pressure transient injection test data

Investigate and develop numerical techniques that permit realistic modeling of the heat sweep associated with injection into fractured reservoirs

Develop solutions for heat transfer at a boiling front moving through a porous media reservoir

Analyze injection data from the Los Azufres geothermal field

Accomplishments to Date:

Developed techniques to model sharp (thermal, phase and compositional) fronts associated with injection of brines into geothermal reservoirs

Designed well testing procedures and data analysis methods for non-isothermal conditions associated with injection tests

Obtained analytical solutions for complex non-isothermal flow problems associated with injection into hydrothermal systems

Major Reports to Date:

Benson, S. M., 1984, "Analysis of Injection Tests in Liquid-Dominated Geothermal Reservoirs," M. S. Thesis, LBL-17953.

Benson, S. M., and Lai, C. H., 1985, "A New Method for Evaluating Composite Reservoir Systems," Geothermal Resources Council Trans., Vol. 9, II, pp. 487-492, LBL-19193.

Bodvarsson, G. S., and Lai, C. H., 1982, "Studies of Injection into Naturally Fractured Reservoirs," Geothermal Resources Council Trans., Vol. 6, pp. 245-248, LBL-14519.

Badvarsson, G. S., Pruess, K., and O'Sullivan, M. J., 1985, "Injection and Energy Recovery in Fractured Geothermal Reservoirs," Soc. Pet. Engr. Jour., Vol. 25, No. 2, pp. 303-312, LBL-15344.

Bodvarsson, G. S., and Stefansson, V., 1987, "Reinjection into Geothermal Reservoirs", to be published in the Proceedings of the NATO Course in Advanced Geothermal Reservoir Engineering, Antalya, Turkey, July 1-10, 1987.

Calore, C., Pruess, K., and Celati, R., 1986, "Modeling Studies of Cold Water Injection into Fluid-Depleted Vapor-Dominated Geothermal Reservoir," Proc. Eleventh Workshop Geothermal Reservoir Engineering, Stanford, CA, report SGP-TR-93, pp. 161-168, LBL-21252.

Pruess, K., and Bodvarsson, G. S., 1984, "Thermal Effects of Reinjection in Geothermal Reservoir with Major Vertical Fractures," Jour. Petr. Tech., Vol. 36, No. 10, pp. 1567-1578, LBL-16269.

Pruess, K., and Wu, Y. S., 1988, "A Semi-Analytical Method for Heat Sweep Calculations in Fractured Reservoirs." Presented at 13th Workshop on Geothermal Reservoir Engineering.

Task: Reservoir Technology **GTD Manager:** Marshall J. Reed
Project: Brine Injection Technology

Modeling Injected Fluid Migration

Directing Organization:
Idaho Operations Office
785 DOE Place
Idaho Falls, ID 83402

Contractor:
Idaho National Engineering Laboratory
P.O. Box 1625
Idaho Falls, ID 83415

Project Manager:
Isamu Aoki

Principal Investigator:
Joel Renner

Telephone: (208) 526-0583(Com)
583-0583(FTS)

Telephone: (208) 526-9824(Com)
583-9824(FTS)

Contract Number: AC07-76ID01570

Contract Period: / / -Open

Contract Funding: FY 88 \$350,000.00

Description:

The objective of this project is to develop computer modeling capability to predict flow, transport and thermal breakthrough of injected fluids in a fractured or complex geothermal reservoir.

Activities/FY88 Milestones:

Confirm FRACSL code capabilities with comparison to analytical and other numerical solutions.

Complete code conversion to a self-contained version which is operable on a microprocessor or a workstation.

Prepare code enhancements and documentation for transfer to industry, though a training session to be hold in early FY-1989.

Accomplishments to Date:

Analyses showed that injection-backflow tracer tests at East Mesa and Raft River prvided positive information on formation characteristics and mixing.

Physical models were successfully used to develop an understanding of fundamental processes occurring in single fractures and fracture networks, and demonstrated that common assumptions regarding tracer flow were in error.

The FRACSL code was successfully validated against data from laboratory models of fracture systems and from analytical studies.

Studies showed that the dual permeability approach can be used to represent the complete range of fractures in a reservoir-scale model.

The FRACSL code was used to demonstrate differences in predicted breakthrough curves for hydraulically equivalent reservoir representations.

The dual permeability approach was extended to three-dimensions.

Major Reports to Date:

Clemo, T.M., 1986, "Representative Element Modeling of Fracture Systems Based on Stochastic Analysis", Proceedings: eleventh workshop on Geothermal Reservoir Engineering, Stanford University, SGP-TR-93, pp. 71-76.

Downs, W.F., R.E. McAtee, R. M. Capuana, and W. Sill, 1982, "Hydrothermal Injection Experiments at the Raft River KGRA, Idaho", Proceedings: Eighth Workshop on Geothermal Reservoir Engineering, Stanford University, SGP-TR-60, pp. 275-278.

Hull, L.C., 1982, "Changes in Fluid Chemistry During Injection, Raft River KGRA," Geothermal Resources Council Bulletin, 114, pp. 11-14.

Hull, L.C., and K.N. Koslow, 1984, "Physical Model Studies of Dispersion in Fracture Networks", (Invited Paper), Penrose Conference on Transport in Fractured Rocks, Geological Society of America, Park City, UT.

Hull, L.C., and 1985, "Laboratory Validation of a Dual-Permeability Reservoir Code", Proceedings, Tenth Workshop on Geothermal Reservoir Engineering, Stanford University, SGP-TR-84, pp. 293-296.

Hull, L.C., and K.N. Koslow, 1986, "Streamline Routing Through Fracture Junctions," Water Resources Research, 22(12), pp. 1731-1734.

Hull, L.C., J.D. Millier and T.M. Clemo, 1987, "Laboratory and Simulation Studies of Solute Transport in Fracture Networks," Water Resources Research, 23(8), pp. 1505-1513.

Hull, L.C., T.M. Clemo, 1988, "Sensitivity Analysis of Dual-Permeability Systems", Proceedings: Twelfth Workshop on Geothermal Reservoir Engineering, Stanford University, in press.

Miller, J.D., 1983, "A Fundamental Approach to the Simulation of Flow and Dispersion in Fractured Media", Proceedings: Ninth Workshop on Geothermal Reservoir Engineering, Stanford University, SGP-TR-74, pp. 373-380.

Miller, J.D., and D.W. Allman, 1986, "Dual-Permeability Modeling of Flow in a Fractured Geothermal Reservoir", Proceedings: Eleventh Workshop on Geothermal Reservoir Engineering, Stanford University, SGP-TR-93, pp. 77-84.

Stiger, S.G. and J.L. Renner, 1987, "Reservoir Technology Research at the Idaho National Engineering Laboratory," Geothermal Resources Council Transactions, Vol. 11, pp. 565-569.

Task: Reservoir Technology
Project: Brine Injection Technology

GTD Manager: Marshall Reed

Tracer Development and Interpretation

Directing Organization:
Idaho Operations Office
785 DOE Place
Idaho Falls, ID 83402

Contractor:
Department of Petroleum Engineering
Stanford Univ., 360 Mitchell Bldg
Stanford, CA 94305

Project Manager:
Isamu Aoki

Principal Investigator:
Roland Horne

Telephone: (208) 526-0583(Com)
583-0583(FTS)

Telephone: (415) 723-9595(Com)

Contract Number: AS07-84ID12529

Contract Period: 07/25/84-05/05/89

Contract Funding: FY 88 \$115,000.00

Description:

Development of tracers and interpretation methods to track transport of injected fluid.

Activities/FY88 Milestones:

Development of reservoir flow models to be used for the interpretation of tracer tests.

Accomplishments to Date:

Completed models for the interpretation of tests in fractured reservoirs.

Developed technique to use tracer test results to design optional reinjection scheme.

Continued results of methodology in several field experiments.

Major Reports to Date:

Cindrich, R.B., 1984, "Application of Stable Isotope and Geochemical Techniques to Problems in Tracing Geothermal Recharge, The Reykjanes Peninsula." June 1984. SGP-TR-79.

Jensen, C.L., 1983, "Matrix Diffusion and Its Effect on the Modeling of Tracer Returns from the Fractured Geothermal Reservoir At Wairakei, New Zealand". December 1983. SGP-TR-71.

Johnson, S.E., 1984, "Tracer Test Analysis of the Klamath Falls Geothermal Resource: A Comparison of Models". June 1984, SGP-TR-81.

Kocabas, I., 1986, "Analysis of Injection-Backflow Tracer Tests" April 1986. SGP-TR-96.

Lovekin, J., 1987, "Optimization of Injection Scheduling in Geothermal Fields". May 1987. SGP-TR-114.

Task: Reservoir Technology **GTD Manager:** Marshall J. Reed
Project: Geothermal Technology Organization

Cooperative Research

Directing Organization:
Idaho Operations Office
785 DOE Place
Idaho Falls, ID 83402

Contractor:
Idaho National Engineering Laboratory
P.O. Box 1625
Idaho Falls, ID 83415

Project Manager:
Isamu Aoki

Principal Investigator:
Joel Renner

Telephone: (208) 526-0583(Com)
583-0583(FTS)

Telephone: (208) 526-9824(Com)
583-9824(FTS)

Contract Number: AC07-76ID01570

Contract Period: 10/25/87-Open

Contract Funding: FY 88 \$250,000.00

Description:

The objective of this project is to sponsor cooperative technological development with the geothermal industry through a cooperative research agreement between the DOE/Idaho Operations Office and the Geothermal Technology Organization (an industry group formed pursuant to the National Cooperative Research Act of 1984). The research selected for funding should have a high likelihood of yielding near-term benefits. INEL works with the industry group to select research projects and is responsible for conducting the selected research through contracts.

Activities/FY88 Milestones:

Deploy and record data from an advanced seismic array at The Geysers geothermal field.

Develop sophisticated seismic techniques for monitoring the effects of injection on a geothermal field.

Accomplishments to Date:

Seismic systems have been deployed and data collection has begun.

Major Reports to Date:

None to date.

... ..
... ..
... ..

... ..
... ..
... ..

... ..
... ..
... ..

... ..
... ..
... ..

... ..
... ..
... ..

... ..
... ..
... ..

... ..
... ..
... ..

... ..
... ..
... ..

2.3 HARD ROCK PENETRATION RESEARCH

Status

The capital costs for drilling production and injection wells are still a significant fraction (35 to 50%) of the costs of a typical, commercial geothermal project. This is due primarily to the heat, hard rock, and harsh fluid chemistry encountered during geothermal drilling.

Innovative drilling and well completion methods include wellbore fracture mapping tools, techniques from mapping interior features of boreholes, improved materials for lost circulation control and instruments to measure, record, and transmit critical downhole drilling parameters. The feasibilities of various advanced drilling concepts are being evaluated, and, in cooperation with industry, the components of a prototype system are being defined.

Description

A major effort is directed at developing lost circulation control, materials and practices. Lost circulation in the drilling fluid is, by industry consensus, the single most expensive consideration in geothermal drilling because of the time and expense incurred in recovering circulation. The R&D effort includes developing, through analyses and experiments, a basic understanding of the two-phase flow phenomena that control fracture plugging, evaluating the high-temperature plugging characteristics of specific lost circulation materials, and developing special downhole systems for sealing wellbores.

Rock penetration mechanics includes the development of insulated drill pipe for high-temperature deep drilling, and development of advanced technology for the hot, deep, hard rock conditions encountered by geothermal wells.

Instrumentation deals with research in the development of tools which will improve fracture mapping techniques, downhole pressure and flow rate measurements, and other procedures in the high temperature and corrosive fluid environment found downhole in geothermal wells.

Industry cost-shared research through the Geothermal Drilling Organization includes several projects which are being developed to the point

where joint industry and government support can be sought for final development and technology transfer. The most recent development projects in this area are drill string dynamics computer codes, a radar fracture mapping tool, borehole diagnostics, and geothermal stimulation.

An example of the innovations involved in these technologies is the use of directional antennas for both the transmitter and the receiver in a single fracture mapping tool that provides both the distance and the direction of a fracture in a downhole application. Unique downhole sampling and uphole data processing techniques are used to obtain high-frequency data using standard logging cable. In a recent test conducted in a lake, radar returns from a target were clearly observed.

Task: Hard Rock Penetration
Project: Lost Circulation Control

GTD Manager: Lew W. Pratsch

Lost Circulation Testing

Directing Organization:
Albuquerque Operations Office
P.O. Box 5400
Albuquerque, NM 87115

Contractor:
Sandia National Laboratories
P.O. Box 5800
Albuquerque, NM 87185

Project Manager:
George P. Tennyson

Principal Investigator:
James C. Dunn

Telephone: (505) 846-3219(Com)

Telephone: (505) 844-4715(Com)

Contract Number: 0728.000

Contract Period: 10/17/83-OPEN

Contract Funding: FY 88 \$200,000.00

Description:

The objective of the Lost Circulation Testing project is to evaluate plugging characteristics of high-temperature lost circulation materials under a range of temperature and pressure conditions.

Activities/FY88 Milestones:

Complete testing of lost circulation particulates in the Lost Circulation Test Facility at Sandia.

Document design changes of API slot tester and publish conclusions on particulate testing.

Collect data during drilling in the Geysers for characterization of lost circulation zones.

Accomplishments to Date:

Major Reports to Date:

Hinkebein, T. E., Behr, V. L., and Wilde, S. W., "Static Slot Testing Of Conventional Lost Circulation Materials". (SAND82-1080), Sandia National Laboratories, 1982.

Loeppke, G. E., and Caskey, B. C., "A Full-Scale Facility For Evaluating Lost Circulation Materials And Techniques". Sandia National Laboratories, Transactions of the Geothermal Resources Council, Vol. 7, October 1983.

Givler, R. C., "Plugging Mechanisms In A Lost Circulation Model". Sandia National Laboratories, Transactions Of 1985 Annual Meeting of Geothermal Resources Council, Vol. 9-Part I, August 1985.

Task: Hard Rock Penetration
Project: Lost Circulation Control

GTD Manager: Lew W. Pratsch

Lost Circulation Analysis

Directing Organization:
Albuquerque Operations Office
P.O. Box 5400
Albuquerque, NM 87115

Contractor:
Sandia National Laboratories
P.O. Box 5800
Albuquerque, NM 87185

Project Manager:
George P. Tennyson

Principal Investigator:
James C. Dunn

Telephone: (505) 846-3219(Com)

Telephone: (505) 844-4715(Com)

Contract Number: 0728.000

Contract Period: 10/17/83-OPEN

Contract Funding: FY 88 \$300,000.00

Description:

The objective of the Lost Circulation Analysis Project is to develop a basic understanding of the two-phase (solid/liquid) flow phenomenon that dictates fracture plugging mechanics for single particle, high temperature, and multiple constituent lost circulation materials.

Activities/FY88 Milestones:

Design and build two-phase decelerating flow experiment.

Develop numerical model of decelerating flow experiment.

Develop analysis of wellbore transient hydraulics during loss of circulation.

Accomplishments to Date:

Major Reports to Date:

Caskey, B. C., and Loeppke, G. E., "Lost Circulation In Geothermal Wells: Research And Development Status". Sandia National Laboratories, Transactions of The Geothermal Resources Council, Vol. 7, October 1983.

Caskey, B. C., Lost Circulation Technology Workshop, October 9-10, 1984, (SAND-85-0109), Sandia National Laboratories, March 1985.

...the ...
...the ...
...the ...

...the ...
...the ...
...the ...

...the ...
...the ...
...the ...

...the ...
...the ...
...the ...

...the ...
...the ...
...the ...

...the ...
...the ...
...the ...

...the ...
...the ...
...the ...

...the ...
...the ...
...the ...

Task: Hard Rock Penetration
Project: Rock Penetration Mechanics

GTD Manager: Lew W. Pratsch

High Temperature Drilling

Directing Organization:
Albuquerque Operations Office
P.O. Box 5400
Albuquerque, NM 87115

Contractor:
Sandia National Laboratories
P.O. Box 5800
Albuquerque, NM 87185

Project Manager:
George P. Tennyson

Principal Investigator:
James C. Dunn

Telephone: (505) 846-3219(Com)

Telephone: (505) 844-4715(Com)

Contract Number: 0728.000

Contract Period: 10/17/83-OPEN

Contract Funding: FY 88 \$210,000.00

Description:

To carry out a scientific investigation that will determine if the use of insulated drill pipe will keep fluids cool enough to limit problems in drill strings and hole stability.

Activities/FY88 Milestones:

Complete definition of test plan and procurement of prototype pipe.

Complete preliminary tests of thermal performance.

Accomplishments to Date:

Modeling of the formation temperatures and drilling fluid temperatures for general and specific magma-penetrating wells; used model to assess the effect of insulated drillpipe.

Issued contracts to two manufacturers of insulated tubulars for finished insulated drillpipe designs.

Major Reports to Date:

Finger, J. T., "Drilling Fluid Temperatures In a Magma-Penetrating Wellbore". Transactions of the Geothermal Resources Council Annual Meeting, October, 1986.

[illegible]

Phragmites australis (Cav.) Trin. ex Steud.

the 1990s, the number of people in the world who are under 15 years of age is expected to increase from 1.1 billion to 1.5 billion. The number of people aged 65 and over is expected to increase from 250 million to 450 million. The number of people aged 15 and over is expected to increase from 3.5 billion to 4.5 billion. The number of people aged 15 and over is expected to increase from 3.5 billion to 4.5 billion. The number of people aged 15 and over is expected to increase from 3.5 billion to 4.5 billion.

Journal of Management Inquiry 18(6)

the 1990s, the number of people in the world who are undernourished has declined from 1.1 billion to 800 million. The number of people who are malnourished has declined from 1.5 billion to 1 billion. The number of people who are obese has increased from 100 million to 300 million. The number of people who are overweight has increased from 100 million to 300 million. The number of people who are obese and overweight has increased from 100 million to 300 million. The number of people who are obese and overweight has increased from 100 million to 300 million.

Figure 1. The effect of the concentration of the *Agrobacterium* suspension on the transformation efficiency of *Agrobacterium* strains. The concentration of the *Agrobacterium* suspension was 10⁶ cells/ml (A), 10⁷ cells/ml (B), 10⁸ cells/ml (C), and 10⁹ cells/ml (D). The concentration of the *Agrobacterium* suspension was 10⁶ cells/ml (A), 10⁷ cells/ml (B), 10⁸ cells/ml (C), and 10⁹ cells/ml (D). The concentration of the *Agrobacterium* suspension was 10⁶ cells/ml (A), 10⁷ cells/ml (B), 10⁸ cells/ml (C), and 10⁹ cells/ml (D).

1. *Pharmaceutical industry* – The pharmaceutical industry is a major contributor to the economy of the United States. It is a highly competitive industry with a high barrier to entry. The industry is characterized by a high level of research and development (R&D) spending, which is necessary to develop new drugs. The industry is also characterized by a high level of marketing spending, which is necessary to promote new drugs. The industry is a major source of employment in the United States.

Task: Hard Rock Penetration
Project: Rock Penetration Mechanics

GTD Manager: Lew W. Pratsch

Analysis Of Drill String Dynamics

Directing Organization:
Albuquerque Operations Office
P.O. Box 5400
Albuquerque, NM 87115

Contractor:
Sandia National Laboratories
P.O. Box 5800
Albuquerque, NM 87185

Project Manager:
George P. Tennyson

Principal Investigator:
James C. Dunn

Telephone: (505) 846-3219(Com)

Telephone: (505) 844-4715(Com)

Contract Number: 0728.000

Contract Period: 10/17/83-OPEN

Contract Funding: FY 88 \$20,000.00

Description:

To accurately measure the severity of down-hole conditions with the aid of a computer program in order to select the most appropriate wellbore equipment.

Activities/FY88 Milestones:

Collect membership fees and signed User Group Charters from Sandia in order to officially start a user group for the program.

Accomplishments to Date:

Constructed finite-element model of bit/DHA/wellbore interaction.

Experimentally verified calculated values for vibration modes and frequencies in static and rotating Bottom Hole Assemblies.

Participated in cost-shared field test to acquire stress and acceleration data from a near-bit instrument package.

Distributed completed source code tape and Users' Manual to Sandia and four industry co-sponsors. (ARCO, Conoco, Mobil, and BP-America).

Major Reports to Date:

Baird, J. A., et al, "GEODYN: A Geologic Formation/Drillstring Dynamics Computer Program", Paper No. SPE 13023, 59th Annual Technical Conference and Exhibition of the Society of Petroleum Engineers of AIME, Houston, Texas, September 1984.

Stone, C. M., Carne, T. G., and Caskey, B. C., "Qualifications Of A Computer Program For Drill String Dynamics". Sandia National Laboratories, Transactions of the Geothermal Resources Council, Vol. 9, August 1985.

Baird, J. A., et al, "User Instruction Manual For GEODYN2: A Geological Formation - Bottom Hole Assembly Dynamic Interaction Finite Element Program". (SAND87-7163), June 1987.

Task: Hard Rock Penetration
Project: Rock Penetration Mechanics

GTD Manager: Lew W. Pratsch

Coring Technology Development

Directing Organization:
Albuquerque Operations Office
P.O. Box 5400
Albuquerque, NM 87115

Contractor:
Sandia National Laboratories
P.O. Box 5800
Albuquerque, NM 87185

Project Manager:
George P. Tennyson

Principal Investigator:
James C. Dunn

Telephone: (505) 846-3219(Com)

Telephone: (505) 844-4715(Com)

Contract Number: 0728.000

Contract Period: 10/17/83-OPEN

Contract Funding: FY 88 \$40,000.00

Description:

To successfully recover core at reasonable cost from relatively deep (6000+ feet) boreholes.

Activities/FY88 Milestones:

Hold coring technology workshop and identify needed development projects.

Publish results of coring systems study and coring workshop.

Prepare development plans for coring technology projects.

Accomplishments to Date:

Completed systems study of concepts for obtaining continuous core in deep thermal regions.

Held Sandia Coring Workshop.

Identified development projects which are key to improving coring capabilities.

Major Reports to Date:

"Coring Deep into Hard Rock Formations", DOE Geothermal Program Review, April 1987.

"Coring in Deep Hard Rock Formations", Sandia Report (In preparation).

Task: Hard Rock Penetration **GTD Manager:** Lew W. Pratsch
Project: Rock Penetration Mechanics

PDC Bit Development

Directing Organization:
Albuquerque Operations Office
P.O. Box 5400
Albuquerque, NM 87115

Contractor:
Sandia National Laboratories
P.O. Box 5800
Albuquerque, NM 87185

Project Manager:
George P. Tennyson

Principal Investigator:
James C. Dunn

Telephone: (505) 846-3219(Com)

Telephone: (505) 844-4715(Com)

Contract Number: 0728.000

Contract Period: 10/17/83-OPEN

Contract Funding: FY 88 \$20,000.00

Description:

To develop polycrystalline diamond compact (PDC) drill bits for use in geothermal drilling projects.

Activities/FY88 Milestones:

Publication of SAND Report on SANDIA's PDC development.

Accomplishments to Date:

Developed diffusion bonding technique for attaching cutters to mounting studs; transferred technology to industry.

Developed finite - element model of single cutter moving through rock; model predicted cutter forces as well as stresses in rock and in the cutter itself.

Extensive tests on single PDC cutters to measure cutter forces and friction coefficients.

Laboratory and field tests on full-scale bits to compare wear rates, weights on bit, torques, and rates of penetration.

Designed and built bit hydraulic test stand for study of fluid flow across bit face.

Demonstrated that high pressure jets impinging ahead of the cutter significantly reduce cutting forces.

Developed thermal analysis model of a cutter that can be used to predict temperatures in the cutter and to define a critical wearflat temperature that should not be exceeded.

Developed bit performance code that correlates rock properties, cutter placement, and operating parameters to define either an operating condition envelope or an optimum bit design.

Major Reports to Date:

Hoover, E. R., and Pope, E. L., "Failure Mechanisms Of PDC Drill Bits In Geothermal Environments". (SAND81-1404), Sandia National Laboratories, September 1981.

Hibbs, L. E., and Sogioian, "Wear Mechanisms For Polycrystalline Diamond Compacts As Utilized For Drilling In Geothermal Environments - Final Report". (SAND82-7213), Sandia National Laboratories, May 1983.

Glowka, D. A., and Stone, C. M., "The Thermal Response of Polycrystalline Diamond Compact Cutters Under Simulated Downhole Conditions". Paper No. SPE 11947, 58th annual Technical Conference and Exhibition of the Society of Petroleum Engineers of AIME, San Francisco, California, October 1983.

Glowka, D. A., and Stone, C. M., "Effects of Thermal and Mechanical Loading on PDC Bit Life". Sandia National Laboratories, Paper No. SPE 13257, 59th Annual Technical Conference and Exhibition of the Society of Petroleum Engineers of AIME, Houston, Texas, September 1984.

Glowka, D. A., "Design Considerations For A Hard-Rock PDC Drill Bit". Sandia National Laboratories, Transactions of 1985 Annual Meeting of Geothermal Resources Council, Vol 9-Part I, August 1985.

Glowka, D. A., "Implications of Thermal Wear Phenomena For PDC Bit Design and Operation". Sandia National Laboratories, Paper No. SPE 14222, 60th Annual Technical Conference and Exhibition of the Society of Petroleum Engineers, Las Vegas, Nevada, September 1985.

Glowka, D. A., "Development of A Method For Predicting The Performance And Wear of PDC Drill Bits". (SAND86-1745), Sandia National Laboratories, June 1987.

Ortega, A., Glowk, D.A., "Frictional Heating and Convective Cooling of Polycrystalline Diamond Drag Tools During Rock Cutting". Sandia National Laboratories, Society of Petroleum Engineers Journal, April 1984.

Zeuch, D.H., and Finger, J.T., "Rock Breakage Mechanisms with a PDC Cutter". Sandia National Laboratories, Paper No. SPE 14219, 60th Annual Technical Conference and Exhibition of the Society of Petroleum Engineers, Las Vegas, NV. September 1985.

Task: Hard Rock Penetration
Project: Instrumentation

GTD Manager: Lew W. Pratsch

Acoustical Data Telemetry

Directing Organization:
Albuquerque Operations Office
P.O. Box 5400
Albuquerque, NM 87115

Contractor:
Sandia National Laboratories
P.O. Box 5800
Albuquerque, NM 87185

Project Manager:
George P. Tennyson

Principal Investigator:
James C. Dunn

Telephone: (505) 846-3219(Com)

Telephone: (505) 844-4715(Com)

Contract Number: 0728.000

Contract Period: 10/17/83-OPEN

Contract Funding: FY 88 \$250,000.00

Description:

The objective of this project is to produce a reliable method for collecting the telemetry of data at the drill bit in order to reduce well costs and increase production. The collecting method currently being investigated is the recording and analysis of acoustical carrier waves transmitted through the drill string.

Activities/FY88 Milestones:

Complete analysis and issue a technical publication.

Complete construction of laboratory model and collect preliminary data on echoing and wave dispersion.

Issue technical publication on laboratory work.

Design comprehensive field tests.

Accomplishments to Date:

Theory completed; concept verified with analysis of field test.

Scale model constructed as testbed for transducers.

Patent disclosure submitted.

Technology transfer effort initiated.

Model transducers designed - fabrication in progress.

Major Reports to Date:

Drumheller, D. S., "Acoustical Properties of Drill Strings Part I: Theory". Journal of Acoustical Society of America, (in review).

Drumheller, D. S., "Acoustical Properties of Drill Strings Part II: Analysis of a Field Test". Journal of Acoustical Society of America, (in review).

Drumheller, D. S., "Acoustical Properties of Drill Strings Part III: Experiment". Journal of Acoustical Society of America, (in review).

Task: Hard Rock Penetration
Project: Instrumentation

GTD Manager: Lew W. Pratsch

Radar Fracture Mapping Tool

Directing Organization:
Albuquerque Operations Office
P.O. Box 5400
Albuquerque, NM 87115

Contractor:
Sandia National Laboratories
P.O. Box 5800
Albuquerque, NM 87185

Project Manager:
George P. Tennyson

Principal Investigator:
James C. Dunn

Telephone: (505) 846-3219(Com)

Telephone: (505) 844-4715(Com)

Contract Number: 0728.000

Contract Period: 10/17/83-OPEN

Contract Funding: FY 88 \$430,000.00

Description:

To build a wireline radar fracture mapping tool.

Activities/FY88 Milestones:

Complete mechanical design modifications and add a 5 kw transmitter.

Establish an in-house calibration facility.

Complete field testing of prototype tool in a rock quarry.

Report test results and evaluate performance of prototype tool.

Accomplishments to Date:

Major Reports to Date:

Bauman, T. J., "A Geothermal Lost Circulation Zone Mapping Tool", Sandia National Laboratories, Transactions of 1985 Annual Meeting of Geothermal Resources Council, Vol. 9-Part II, August 1985.

Chang, H.T., "Feasibility Of A Borehole VHF Radar Technique For Fracture Mapping". Sandia National Laboratories, Transactions of 1984 Annual Meeting of the Geothermal Resources Council. Vol. 9-Part II. August 1985.

Chang, H.T., "Feasibility Of An Acoustic Technique For Fracture Detection". Sandia National Laboratories, Transactions of 1985 Annual Meeting of Geothermal Resources Council. Vol. 9-Part II, August 1985.

Chang, H.T., "A Downhole Radar System For Fracture Detection". Sandia National Laboratories, Transactions of 1986 Annual Meeting of Geothermal Resources Council, Vol. 10, 1986.

Task: Hard Rock Penetration **GTD Manager:** Lew W. Pratsch
Project: Geothermal Drilling Organization

Borehole Televiewer

Directing Organization:
Albuquerque Operations Office
P.O. Box 5400
Albuquerque, NM 87115

Contractor:
Sandia National Laboratories
P.O. Box 5800
Albuquerque, NM 87185

Project Manager:
George P. Tennyson

Principal Investigator:
James C. Dunn

Telephone: (505) 846-3219(Com)

Telephone: (505) 844-4715(Com)

Contract Number: 0728.000

Contract Period: 10/17/83-OPEN

Contract Funding: FY 88 \$90,000.00

Description:

The objective of this project is to develop a commercially available acoustic borehole televiewer for use in geothermal wells.

Activities/FY88 Milestones:

Complete hot test of televiewer in geothermal well.

Place contract for logging phase of televiewer development.

Obtain field data in geothermal wells.

Accomplishments to Date:

Major Reports to Date:

Heard, F. E., and Bauman, T. J., "Development Of A Geothermal Acoustic Borehole Televiewer". (SAND83-0681), Sandia National Laboratories, August 1983.

THE HOUSE OF REPRESENTATIVES
COMMITTEE ON THE JUDICIARY

REPORT

ON THE
NOMINATION OF
JAMES H. HAYES
TO BE
JUDGE OF THE
SUPREME COURT OF THE DISTRICT OF COLUMBIA

IN SENATE, FEBRUARY 18, 1878.

WASHINGTON: GOVERNMENT PRINTING OFFICE: 1878.

1878-79.

1878-79.

1878-79.

1878-79.

1878-79.

1878-79.

1878-79.

1878-79.

1878-79.

1878-79.

Task: Hard Rock Penetration **GTD Manager:** Lew W. Pratsch
Project: Geothermal Drilling Organization

High Temperature Elastomer Development

Directing Organization:
Albuquerque Operations Office
P.O. Box 5400
Albuquerque, NM 87115

Contractor:
Sandia National Laboratories
P.O. Box 5800
Albuquerque, NM 87185

Project Manager:
George P. Tennyson

Principal Investigator:
James C. Dunn

Telephone: (505) 846-3219(Com)

Telephone: (505) 844-4715(Com)

Contract Number: 0728.000

Contract Period: 10/17/83-OPEN

Contract Funding: FY 88 \$30,000.00

Description:

The objective of this project is to develop high temperature elastomers that will extend the life, and improve the performance, of geothermal drilling equipment.

Activities/FY88 Milestones:

Place contract for the development of drill pipe protectors.

Place contract for the development of rotating head seals.

Place contract for the development of BOP rubbers.

Test drill pipe protectors in geothermal wells.

Accomplishments to Date:

Major Reports to Date:

Carson, C. C., "Geothermal Instrumentation Development Activities at Sandia". Sandia National Laboratories, Transactions of 1985 Annual Meeting of Geothermal Resources Council, Vol. 9-Part II, August 1985.

THE UNITED STATES OF AMERICA
DEPARTMENT OF THE ARMY
OFFICE OF THE ADJUTANT GENERAL
WASHINGTON, D. C.

MEMORANDUM FOR THE RECORD

SUBJECT: [Illegible]
REFERENCE: [Illegible]
ACTION: [Illegible]

1. [Illegible]
2. [Illegible]
3. [Illegible]

4. [Illegible]
5. [Illegible]

6. [Illegible]

7. [Illegible]
8. [Illegible]

9. [Illegible]
10. [Illegible]

11. [Illegible]
12. [Illegible]

13. [Illegible]
14. [Illegible]

15. [Illegible]
16. [Illegible]

17. [Illegible]
18. [Illegible]

Task: Hard Rock Penetration **GTD Manager:** Lew W. Pratsch
Project: Geothermal Drilling Organization

Foam Lost Circulation Tool

Directing Organization:
Albuquerque Operations Office
P.O. Box 5400
Albuquerque, NM 87115

Contractor:
Sandia National Laboratories
P.O. Box 5800
Albuquerque, NM 87185

Project Manager:
George P. Tennyson

Principal Investigator:
James C. Dunn

Telephone: (505) 846-3219(Com)

Telephone: (505) 844-4715(Com)

Contract Number: 0728.000

Contract Period: 10/17/83-OPEN

Contract Funding: FY 88 \$7,000.00

Description:

The objective of the Foam Lost Circulation Tool project is to develop both an expanding foam for plugging lost circulation zones and the tool for applying it.

Activities/FY88 Milestones:

Complete field testing of Foam Lost Circulation Tool.

Accomplishments to Date:

Major Reports to Date:

Blackwell, B. F., and Ortega, A., "A Quasi-Steady Model For Predicting Temperature Of Aqueous Foams Circulating In Geothermal Wellbores". (SAND82-0899C), Sandia National Laboratories, July 1983.

Kraynik, A. M., "Foam Drainage". (SAND83-0844), Sandia National Laboratories, November 1983.

Loeppke, G. E., Polk, G., Baughman, K., "Self-Contained, Rigid-Foam Placement Tool For Plugging Lost-Circulation Zones". Transactions of 1985 Annual Meeting of the Geothermal Resources Council, Vol. 9-Part I, August 1985.

Task: Hard Rock Penetration **GTD Manager:** Lew W. Pratsch
Project: Geothermal Drilling Organization

Downhole Air Turbine

Directing Organization:
Albuquerque Operations Office
P.O. Box 5400
Albuquerque, NM 87115

Contractor:
Sandia National Laboratories
P.O. Box 5800
Albuquerque, NM 87185

Project Manager:
George P. Tennyson

Principal Investigator:
James C. Dunn

Telephone: (505) 846-3219(Com)

Telephone: (505) 844-4715(Com)

Contract Number: 0728.000

Contract Period: 10/17/83-OPEN

Contract Funding: FY 88 \$23,000.00

Description:

The objective of the Downhole Air Turbine project is to develop a downhole air turbine for drilling geothermal wells.

Activities/FY88 Milestones:

Complete first phase field test in the Geysers.

Complete final field tests in the Geysers.

Accomplishments to Date:

Major Reports to Date:

42. 1970-1971
 43. 1971-1972
 44. 1972-1973
 45. 1973-1974
 46. 1974-1975
 47. 1975-1976
 48. 1976-1977
 49. 1977-1978
 50. 1978-1979
 51. 1979-1980
 52. 1980-1981
 53. 1981-1982
 54. 1982-1983
 55. 1983-1984
 56. 1984-1985
 57. 1985-1986
 58. 1986-1987
 59. 1987-1988
 60. 1988-1989
 61. 1989-1990
 62. 1990-1991
 63. 1991-1992
 64. 1992-1993
 65. 1993-1994
 66. 1994-1995
 67. 1995-1996
 68. 1996-1997
 69. 1997-1998
 70. 1998-1999
 71. 1999-2000
 72. 2000-2001
 73. 2001-2002
 74. 2002-2003
 75. 2003-2004
 76. 2004-2005
 77. 2005-2006
 78. 2006-2007
 79. 2007-2008
 80. 2008-2009
 81. 2009-2010
 82. 2010-2011
 83. 2011-2012
 84. 2012-2013
 85. 2013-2014
 86. 2014-2015
 87. 2015-2016
 88. 2016-2017
 89. 2017-2018
 90. 2018-2019
 91. 2019-2020
 92. 2020-2021
 93. 2021-2022
 94. 2022-2023
 95. 2023-2024
 96. 2024-2025
 97. 2025-2026
 98. 2026-2027
 99. 2027-2028
 100. 2028-2029
 101. 2029-2030
 102. 2030-2031
 103. 2031-2032
 104. 2032-2033
 105. 2033-2034
 106. 2034-2035
 107. 2035-2036
 108. 2036-2037
 109. 2037-2038
 110. 2038-2039
 111. 2039-2040
 112. 2040-2041
 113. 2041-2042
 114. 2042-2043
 115. 2043-2044
 116. 2044-2045
 117. 2045-2046
 118. 2046-2047
 119. 2047-2048
 120. 2048-2049
 121. 2049-2050
 122. 2050-2051
 123. 2051-2052
 124. 2052-2053
 125. 2053-2054
 126. 2054-2055
 127. 2055-2056
 128. 2056-2057
 129. 2057-2058
 130. 2058-2059
 131. 2059-2060
 132. 2060-2061
 133. 2061-2062
 134. 2062-2063
 135. 2063-2064
 136. 2064-2065
 137. 2065-2066
 138. 2066-2067
 139. 2067-2068
 140. 2068-2069
 141. 2069-2070
 142. 2070-2071
 143. 2071-2072
 144. 2072-2073
 145. 2073-2074
 146. 2074-2075
 147. 2075-2076
 148. 2076-2077
 149. 2077-2078
 150. 2078-2079
 151. 2079-2080
 152. 2080-2081
 153. 2081-2082
 154. 2082-2083
 155. 2083-2084
 156. 2084-2085
 157. 2085-2086
 158. 2086-2087
 159. 2087-2088
 160. 2088-2089
 161. 2089-2090
 162. 2090-2091
 163. 2091-2092
 164. 2092-2093
 165. 2093-2094
 166. 2094-2095
 167. 2095-2096
 168. 2096-2097
 169. 2097-2098
 170. 2098-2099
 171. 2099-2100
 172. 2100-2101
 173. 2101-2102
 174. 2102-2103
 175. 2103-2104
 176. 2104-2105
 177. 2105-2106
 178. 2106-2107
 179. 2107-2108
 180. 2108-2109
 181. 2109-2110
 182. 2110-2111
 183. 2111-2112
 184. 2112-2113
 185. 2113-2114
 186. 2114-2115
 187. 2115-2116
 188. 2116-2117
 189. 2117-2118
 190. 2118-2119
 191. 2119-2120
 192. 2120-2121
 193. 2121-2122
 194. 2122-2123
 195. 2123-2124
 196. 2124-2125
 197. 2125-2126
 198. 2126-2127
 199. 2127-2128
 200. 2128-2129
 201. 2129-2130
 202. 2130-2131
 203. 2131-2132
 204. 2132-2133
 205. 2133-2134
 206. 2134-2135
 207. 2135-2136
 208. 2136-2137
 209. 2137-2138
 210. 2138-2139
 211. 2139-2140
 212. 2140-2141
 213. 2141-2142
 214. 2142-2143
 215. 2143-2144
 216. 2144-2145
 217. 2145-2146
 218. 2146-2147
 219. 2147-2148
 220. 2148-2149
 221. 2149-2150
 222. 2150-2151
 223. 2151-2152
 224. 2152-2153
 225. 2153-2154
 226. 2154-2155
 227. 2155-2156
 228. 2156-2157
 229. 2157-2158
 230. 2158-2159
 231. 2159-2160
 232. 2160-2161
 233. 2161-2162
 234. 2162-2163
 235. 2163-2164
 236. 2164-2165
 237. 2165-2166
 238. 2166-2167
 239. 2167-2168
 240. 2168-2169
 241. 2169-2170
 242. 2170-2171
 243. 2171-2172
 244. 2172-2173
 245. 2173-2174
 246. 2174-2175
 247. 2175-2176
 248. 2176-2177
 249. 2177-2178
 250. 2178-2179
 251. 2179-2180
 252. 2180-2181
 253. 2181-2182
 254. 2182-2183
 255. 2183-2184
 256. 2184-2185
 257. 2185-2186
 258. 2186-2187
 259. 2187-2188
 260. 2188-2189
 261. 2189-2190
 262. 2190-2191
 263. 2191-2192
 264. 2192-2193
 265. 2193-2194
 266. 2194-2195
 267. 2195-2196
 268. 2196-2197
 269. 2197-2198
 270. 2198-2199
 271. 2199-2200
 272. 2200-2201
 273. 2201-2202
 274. 2202-2203
 275. 2203-2204
 276. 2204-2205
 277. 2205-2206
 278. 2206-2207
 279. 2207-2208
 280. 2208-2209
 281. 2209-2210
 282. 2210-2211
 283. 2211-2212
 284. 2212-2213
 285. 2213-2214
 286. 2214-2215
 287. 2215-2216
 288. 2216-2217
 289. 2217-2218
 290. 2218-2219
 291. 2219-2220
 292. 2220-2221
 293. 2221-2222
 294. 2222-2223
 295. 2223-2224
 296. 2224-2225
 297. 2225-2226
 298. 2226-2227
 299. 2227-2228
 300. 2228-2229
 301. 2229-2230
 302. 2230-2231
 303. 2231-2232
 304. 2232-2233
 305. 2233-2234
 306. 2234-2235
 307. 2235-2236
 308. 2236-2237
 309. 2237-2238
 310. 2238-2239
 311. 2239-2240
 312. 2240-2241
 313. 2241-2242
 314. 2242-2243
 315. 2243-2244
 316. 2244-2245
 317. 2245-2246
 318. 2246-2247
 319. 2247-2248
 320. 2248-2249
 321. 2249-2250
 322. 2250-2251
 323. 2251-2252
 324. 2252-2253
 325. 2253-2254
 326. 2254-2255
 327. 2255-2256
 328. 2256-2257
 329. 2257-2258
 330. 2258-2259
 331. 2259-2260
 332. 2260-2261
 333. 2261-2262
 334. 2262-2263
 335. 2263-2264
 336. 2264-2265
 337. 2265-2266
 338. 2266-2267
 339. 2267-2268
 340. 2268-2269
 341. 2269-2270
 342. 2270-2271
 343. 2271-2272
 344. 2272-2273
 345. 2273-2274
 346. 2274-2275
 347. 2275-2276
 348. 2276-2277
 349. 2277-2278
 350. 2278-2279
 351. 2279-2280
 352. 2280-2281
 353. 2281-2282
 354. 2282-2283
 355. 2283-2284
 356. 2284-2285
 357. 2285-2286
 358. 2286-2287
 359. 2287-2288
 360. 2288-2289
 361. 2289-2290
 362. 2290-2291
 363. 2291-2292
 364. 2292-2293
 365. 2293-2294
 366. 2294-2295
 367. 2295-2296
 368. 2296-2297
 369. 2297-2298
 370. 2298-2299
 371. 2299-2300
 372. 2300-2301
 373. 2301-2302
 374. 2302-2303
 375. 2303-2304
 376. 2304-2305
 377. 2305-2306
 378. 2306-2307
 379. 2307-2308
 380. 2308-2309
 381. 2309-2310
 382. 2310-2311
 383. 2311-2312
 384. 2312-2313
 385. 2313-2314
 386. 2314-2315
 387. 2315-2316
 388. 2316-2317
 389. 2317-2318
 390. 2318-2319
 391. 2319-2320
 392. 2320-2321
 393. 2321-2322
 394. 2322-2323
 395. 2323-2324
 396. 2324-2325
 397. 2325-2326
 398. 2326-2327
 399. 2327-2328
 400. 2328-2329
 401. 2329-2330
 402. 2330-2331
 403. 2331-2332
 404. 2332-2333
 405. 2333-2334
 406. 2334-2335
 407. 2335-2336
 408. 2336-2337
 409. 2337-2338
 410. 2338-2339
 411. 2339-2340
 412. 2340-2341
 413. 2341-2342
 414. 2342-2343
 415. 2343-2344
 416. 2344-2345
 417. 2345-2346
 418. 2346-2347
 419. 2347-2348
 420. 2348-2349
 421. 2349-2350
 422. 2350-2351
 423. 2351-2352
 424. 2352-2353
 425. 2353-2354
 426. 2354-2355
 427. 2355-2356
 428. 2356-2357
 429. 2357-2358
 430. 2358-2359
 431. 2359-2360
 432. 2360-2361
 433. 2361-2362
 434. 2362-2363
 435. 2363-2364
 436. 2364-2365
 437. 2365-2366
 438. 2366-2367
 439. 2367-2368
 440. 2368-2369
 441. 2369-2370
 442. 2370-2371
 443. 2371-2372
 444. 2372-2373
 445. 2373-2374
 446. 2374-2375
 447. 2375-2376
 448. 2376-2377
 449. 2377-2378
 450. 2378-2379
 451. 2379-2380
 452. 2380-2381
 453. 2381-2382
 454. 2382-2383
 455. 2383-2384
 456. 2384-2385
 457. 2385-2386
 458. 2386-2387
 459. 2387-2388
 460. 2388-2389
 461. 2389-2390
 462. 2390-2391
 463. 2391-2392
 464. 2392-2393
 465. 2393-2394
 466. 2394-2395
 467. 2395-2396
 468. 2396-2397
 469. 2397-2398
 470. 2398-2399
 471. 2399-2400
 472. 2400-2401
 473. 2401-2402
 474. 2402-2403
 475. 2403-2404
 476. 2404-2405
 477. 2405-2406
 478. 2406-2407
 479. 2407-2408
 480. 2408-2409
 481. 2409-2410
 482. 2410-2411
 483. 2411-2412
 484. 2412-2413
 485. 2413-2414
 486. 2414-2415
 487. 2415-2416
 488. 2416-2417
 489. 2417-2418
 490. 2418-2419
 491. 2419-2420
 492. 2420-2421
 493. 2421-2422
 494. 2422-2423
 495. 2423-2424
 496. 2424-2425
 497. 2425-2426
 498. 2426-2427
 499. 2427-2428
 500. 2428-2429
 501. 2429-2430
 502. 2430-2431
 503. 2431-2432
 504. 2432-2433
 505. 2433-2434
 506. 2434-2435
 507. 2435-2436
 508. 2436-2437
 509. 2437-2438
 510. 2438-2439
 511. 2439-2440
 512. 2440-2441
 513. 2441-2442
 514. 2442-2443
 515. 2443-2444
 516. 2444-2445
 517. 2445-2446
 518. 2446-2447
 519. 2447-2448
 520. 2448-2449
 521. 2449-2450
 522. 2450-2451
 523. 2451-2452
 524. 2452-2453
 525. 2453-2454
 526. 2454-2455
 527. 2455-2456
 528. 2456-2457
 529. 2457-2458
 530. 2458-2459
 531. 2459-2460
 532. 2460-2461
 533. 2461-2462
 534. 2462-2463
 535. 2463-2464
 536. 2464-2465
 537. 2465-2466
 538. 2466-2467
 539. 2467-2468
 540. 2468-2469
 541. 2469-2470
 542. 2470-2471
 543. 2471-2472
 544. 2472-2473
 545. 2473-2474
 546. 2474-2475
 547. 2475-2476
 548. 2476-2477
 549. 2477-2478
 550. 2478-2479
 551. 2479-2480
 552. 2480-2481
 553. 2481-2482
 554. 2482-2483
 555. 2483-2484
 556. 2484-2485
 557. 2485-2486
 558. 2486-2487
 559. 2487-2488
 560. 2488-2489
 561. 2489-2490
 562. 2490-2491
 563. 2491-2492
 564. 2492-2493
 565. 2493-2494
 566. 2494-2495
 567. 2495-2496
 568. 2496-2497
 569. 2497-2498
 570. 2498-2499
 571. 2499-2500
 572. 2500-2501
 573. 2501-2502
 574. 2502-2503
 575. 2503-2504
 576. 2504-2505
 577. 2505-2506
 578. 2506-2507
 579. 2507-2508
 580. 2508-2509
 581. 2509-2510
 582. 2510-2511
 583. 2511-2512
 584. 2512-2513
 585. 2513-2514
 586. 2514-2515
 587. 2515-2516
 588. 2516-2517
 589. 2517-2518
 590. 2518-2519
 591. 2519-2520
 592. 2520-2521
 593. 2521-2522
 594. 2522-2523
 595. 2523-2524
 596. 2524-2525
 597. 2525-2526
 598. 2526-2527
 599. 2527-2528
 600. 2528-2529
 601. 2529-2530
 602. 2530-2531
 603. 2531-2532
 604. 2532-2533
 605. 2533-2534
 606. 2534-2535
 607. 2535-2536
 608. 2536-2537
 609. 2537-2538
 610. 2538-2539
 611. 2539-2540
 612. 2540-2541
 613. 2541-2542
 614. 2542-2543
 615. 2543-2544
 616. 2544-2545
 617. 2545-2546
 618. 2546-2547
 619. 2547-2548
 620. 2548-2549
 621. 2549-2550
 622. 2550-2551
 623. 2551-2552
 624. 2552-2553
 625. 2553-2554
 626. 2554-2555
 627. 2555-2556
 628. 2556-2557
 629. 2557-2558
 630. 2558-2559
 631. 2559-2560
 632. 2560-2561
 633. 2561-2562
 634. 2562-2563
 635. 2563-2564
 636. 2564-2565
 637. 2565-2566
 638. 2566-2567
 639. 2567-2568
 640. 2568-2569
 641. 2569-2570
 642. 2570-2571
 643. 2571-2572
 644. 2572-2573
 645. 2573-2574
 646. 2574-2575
 647. 2575-2576
 648. 2576-2577
 649. 2577-2578
 650. 2578-2579
 651. 2579-2580
 652. 2580-2581
 653. 2581-2582
 654. 2582-2583
 655. 2583-2584
 656. 2584-2585
 657. 2585-2586
 658. 2586-2587
 659. 2587-2588
 660. 2588-2589
 661. 2589-2590
 662. 2590-2591
 663. 2591-2592
 664. 2592-2593
 665. 2593-2594
 666. 2594-2595
 667. 2595-2596
 668. 2596-2597
 669. 2597-2598
 670. 2598-2599
 671. 2599-2600
 672. 2600-2601
 673. 2601-2602
 674. 2602-2603
 675. 2603-2604
 676. 2604-2605
 677. 2605-2606
 678. 2606-2607
 679. 2607-2608
 680. 2608-2609
 681. 2609-2610
 682. 2610-2611
 683. 2611-2612
 684. 2612-2613
 685. 2613-2614
 686. 2614-2615
 687. 2615-2616
 688. 2616-2617
 689. 2617-2618
 690. 2618-2619
 691. 2619-2620
 692. 2620-2621
 693. 2621-2622
 694. 2622-2623
 695.

2.4 CONVERSION TECHNOLOGY

Status

a. **Heat Cycle Research:** Large binary technology has been tested at the government/industry 45-MWe plant in Heber, California. The costs of this research project are subeconomic for commercial application at this time.

b. **Advanced Brine Chemistry:** Enough has been learned about the complex chemistry of brines that it should be possible to identify cost-effective power cycles, equipment, and materials when a brine falls within well-defined chemical, experience, and technical bounds found at other sites. Brine-related problems are still a costly cause of undue maintenance requirements and downtime.

c. **Materials Development:** While considerable progress has been made in materials developed to withstand the hot, hostile geothermal environment, the expected lifetimes of certain surface and downhole components are not yet cost-effective.

Description

Because of the variable nature of geothermal energy, a variety of technologies are used to convert its heat to electricity. Dry steam conversion technology is mature and has been in commercial use for many years. The basic technology for flash steam plants is also well advanced, and at today's state-of-the-art, is usually used when the resource temperature is over 200°C (400°F). Binary cycles are more thermodynamically efficient than flash cycles in the 150-200°C (300-400°F) range. The larger size and higher costs of equipment required for lower temperature fluids, and the tendency of some brines to foul binary cycle heat exchangers and downhole pumps, have inhibited the use of binary systems in all but small units. R&D is underway in which advancements in binary technology will permit it to efficiently operate than flash steam technology on the more abundant moderate-temperature reservoirs.

Other areas of major concern to geothermal power producers are the problems associated with

handling highly saline brines within production wellbores, wellfield pipelines and steam separators, power plant plumbing and valves, and injection wells. Many costly problems are caused by precipitation of hard mineral scales from supersaturated brine as temperature falls and acidity changes with loss of dissolved carbon dioxide. In fact, mineral scaling is the dominant cause of increased costs associated with the operation of geothermal power plants that use highly saline hot brine reservoirs.

Another major problem related to brine chemistry, as well as to high temperatures, is the extraordinary demand these factors make on materials commonly used in other industries. The combined effects of thermal stress and corrosion and scaling on equipment and components limit their durability to such a degree that plant availability, lifetime, power output, and heat exchange capability may be seriously affected. Any of these problems decrease the cost-effectiveness of the operation through downtime and costly replacement.

The Program's heat cycle task is focused on the development of technology for effecting the improved utilization of moderate-temperature geothermal fluids. A major emphasis of the research, as suggested above, is improvement of the performance of geothermal binary cycles to levels approaching the practicable thermodynamic maximum. In pursuit of this goal, tests are being conducted at the Heat Cycle Research Facility located at East Mesa, California. The current testing involves the investigation of binary power cycle performance utilizing mixtures of nonadjacent hydrocarbons as the working fluids, with supercritical vaporization and in-tube condensation of the working fluid. In addition to the present program, preparations are being made to investigate the binary cycle performance improvements which can be achieved by allowing supersaturated vapor expansions in the turbine. These efforts are anticipated to verify that through the utilization of these advanced power cycle concepts and allowing the supersaturated turbine expansions, improvements of up to 28 percent in the net geofluid effectiveness (net watt hours plant output per pound of geofluid) over conventional binary power plants can be achieved. Results of recent testing, including those tests examining the performance of the countercurrent condenser at different tube

inclinations, support the assumptions used in projected performance improvements.

Future efforts will include examination of those concepts which will allow the base of resources that can be economically developed to be expanded through the use of innovative technology. Specific areas for investigation include heat rejection systems which will minimize the cooling water make-up requirements while retaining performance approaching that of conventional wet cooling systems.

Two approaches are being pursued to define the expensive operating problems associated with brine chemistry. First, numerical modeling of complex brines will allow improved prediction of the thermodynamic conditions under which problems occur in geothermal power plants from scale deposition, corrosion, and suspended solids. These predictions will in turn allow engineering design, material selection, and power plant operations to be modified to optimize the economic utilization of the resource.

Second, research is focused on detection and monitoring of constituents in the brine stream which can damage piping, valves, and wells as brine flows through the power plant and is injected back into the wellfield. Chemistry-monitoring instrumentation is inserted in the brine flow lines to detect serious corrosion, scaling, and particulate matter before these problems result in plant failure.

Another major problem engendered in geothermal development due to brine chemistry is the large volume of sludge created by treatment of hypersaline brines prior to injection. This step is necessary to avoid plugging of the injection well, but the resulting sludge is contaminated with trace toxic constituents of the brine itself, such as mercury, lead, and vanadium. The presence of these metals, though small in quantity, invokes federal/state environmental regulations requiring disposal in sites licensed to receive hazardous wastes. Before large scale development of hypersaline brines can occur, environmentally and economically acceptable methods for disposing of the wastes must be found.

Experiments are underway on the use of biochemical techniques to concentrate and remove

toxic metals from wastes. There are several mechanisms by which micro-organisms react with metals. Two mechanisms are being addressed. One method is the solubilization of metals by micro-organisms which leach out the metals; and the other is concentration and removal of the metals by their sorption on cellular materials. Both processes are applicable in situations where metals are present in large volumes of waste at concentrations unsuitable for conventional technology.

Geothermal materials development was initiated early in the Program to ensure that the private sector development of geothermal energy is not constrained by the availability of technologically and economically viable materials of construction. Major successes have been attained in the development of elastomers for high-temperature applications and in the use of polymer concrete liners for corrosion protection.

The development of the high-temperature Y-267 EPDM (ethylene, propylene, diene, methylene) elastomer can be classified as a technology breakthrough. Used in seals for well logging tools, packers, valves, and other equipment exposed to hostile high-temperature environments, the Y-267 EPDM elastomer has proven to be at the leading edge of technology. Tests performed for applications in the oil, gas, nuclear, and coal industries have given equally impressive results.

Cements represent another area where considerable progress has been made. The cementing of a well is considered to be one of the most critical items in geothermal development.

Task: Conversion Technology **GTD Manager:** Raymond LaSala
Project: Heat Cycle Research

Advanced Heat Rejection System

Directing Organization:
Idaho Operations Office
550 2nd Street
Idaho Falls, ID 83401

Contractor:
Idaho National Engineering Lab. (EG&G)
P.O. Box 1625
Idaho Falls, ID 83415

Project Manager:
Kenneth Taylor

Principal Investigator:
G. L. Mines

Telephone: (208) 526-9063(Com)
583-9063(FTS)

Telephone: (208) 526-0260(Com)

Contract Number: 7AC111

Contract Period: 06/01/88-Open

Contract Funding: FY 88 \$65,000.00

Description:

As part of the overall task objective of identifying, developing and applying new technologies for energy conversion systems the objective of the Advanced Heat Rejection task is to analyze and test condenser/cooling systems that have a lower requirement for clean make-up cooling water.

Activities/FY88 Milestones:

Complete system study for the advanced heat rejection system.

Complete research and report results for advanced heat rejection system.

Accomplishments to Date:

Major Reports to Date:

Bliem, C. J., "Preliminary Performance Estimates of Binary Geothermal Cycles Using Mixed-Halocarbon Working Fluids". July 1986.

Jacobs, H. R., and Eden, T. J., "Direct Contact Heat Transfer In A Sieve Tray Column". Eighth International Heat Transfer Conference, August 1986.

Bliem, C. J., et al, "Vaporization at Supercritical Pressures and Counterflow Condensing of Pure and Mixed-Hydrocarbon Working Fluids for Geothermal Power Plants". 21st Intersociety Energy Conversion Engineering Conference, August 1986.

Bliem, C. J., "Zeotropic Mixtures of Halocarbons as Working Fluids in Binary Geothermal Power Generation Cycles": 22nd Intersociety Energy Conversion Engineering Conference, August 1987.

Task: Conversion Technology
Project: Heat Cycle Research

GTD Manager: Raymond LaSala

Metastable Supersaturated Expansions

Directing Organization:
Idaho Operations Office
550 2nd Street
Idaho Falls, ID 83401

Contractor:
Idaho National Engineering Lab. (EG&G)
P.O. Box 1625
Idaho Falls, ID 83415

Project Manager:
Kenneth Taylor

Principal Investigator:
G. L. Mines

Telephone: (208) 526-9063(Com)
583-9063(FTS)

Telephone: (208) 526-0260(Com)

Contract Number:

Contract Period: 07/01/86-05/01/90

Contract Funding: FY 88 \$295,000.00

Description:

The Metastable Supersaturated Expansions project seeks to establish the degree of wetness that can be tolerated in hydrocarbon vapor expansions in radial inflow reaction turbines.

Activities/FY88 Milestones:

Complete the development and procurement of laser droplet illumination system.

Specify and receive a reaction turbine for testing of HCRF.

Complete the design of facility modifications for 2-D nozzle and reaction turbine.

Install the 2-D nozzle and reaction turbine at HCRF.

Complete testing of metastable supersaturated vapor expansions; report results.

Accomplishments to Date:

NCA&T developed and procured a LASER droplet illumination system to be utilized with a two- dimensional nozzle in determining whether condensate forms in the metastable supersaturated expansions.

Specified a new reaction turbine for testing at the HCRF.

Major Reports to Date:

Mines, G. L., and Bliem, C. J., "Effects of Mixtures and Supersaturated Turbine Expansions on Turbine Efficiency".

Bliem, C. J., Mines, G. L., Goswami, D. Y., "Investigation of Condensation Behavior of Metastable Supersaturated Vapor Expansions of Hydrocarbon Working Fluids".

Task: Conversion Technology
Project: Heat Cycle Research

GTD Manager: Raymond LaSala

Condenser Attitude Tests

Directing Organization:
Idaho Operations Office
550 2nd Street
Idaho Falls, ID 83401

Contractor:
Idaho National Engineering Lab. (EG&G)
P.O. Box 1625
Idaho Falls, ID 83415

Project Manager:
Kenneth Taylor

Principal Investigator:
G. L. Mines

Telephone: (208) 526-9063(Com)
583-1147(FTS)

Telephone: (208) 526-0260(Com)

Contract Number: 7AC111

Contract Period: 07/01/88-02/01/90

Contract Funding: FY 88 \$75,000.00

Description:

The objective of the Condenser Attitude Tests project is to characterize the performance of counterflow, in-tube condensers in a variety of operating conditions.

Activities/FY88 Milestones:

Complete supercritical testing with condenser oriented at final attitude with the isobutane-hexane family.

Complete supercritical cycle testing at final condenser attitude; prepare report.

Procure the reaction turbine.

Specify necessary instrumentation for two dimensional nozzle testing.

Prepare test plan for conducting two dimensional nozzle and reaction turbine testing.

Design the facility modifications to install the two dimensional test nozzle and reaction turbine.

Incorporate the testing of the two dimensional expansion nozzle and the reaction turbine into the supercritical cycle testing at the final condenser attitude.

Accomplishments to Date:

The accomplishments of the Heat Cycle Research Facility, HCRF, may also be accredited to the Condenser Attitude Test project as the condenser is part of HCRF.

The data collected at the near horizontal condenser attitude was evaluated in sufficient detail to assist in the identification of the final condenser attitude to be tested, as well as to determine the adequacy of the data being generated by the testing.

Major Reports to Date:

Bliem, C. J., Mines, G. L., Swank, W. D., "Geothermal Heat Cycle Research--Supercritical Cycle with Horizontal Counterflow Condenser". 22nd Intersociety Energy Conversion Engineering Conference, August 1987.

Bliem, C. J., Mines, G. L., "Countercurrent Flow, In-Tube Condensing Characteristics of Binary Hydrocarbon Mixtures at Three Condenser Attitudes".

Task: Conversion Technology
Project: Heat Cycle Research

GTD Manager: Raymond LaSala

Systems Analysis

Directing Organization:
Idaho Operations Office
550 2nd Street
Idaho Falls, ID 83401

Contractor:
Idaho National Engineering Lab. (EG&G)
P.O. Box 1625
Idaho Falls, ID 83415

Project Manager:
Kenneth Taylor

Principal Investigator:
G. L. Mines

Telephone: (208) 526-9063(Com)
583-9063(FTS)

Telephone: (208) 526-0260(Com)

Contract Number: 7AC111

Contract Period: 10/01/85-12/01/88

Contract Funding:

Description:

The objective of the Systems Analysis project is to analyze the theoretical and emperical performance of the various heat cycles and components under investigation.

Activities/FY88 Milestones:

Complete conceptual design and analysis of combined direct-contact heat exchanger and crystallizer; prepare report.

Complete preliminary estimate of binary geothermal cycle preformance using mixed-fluorocarbon or halocarbon working fluids and of applicability of modified Kalina Cycles; prepare report.

Accomplishments to Date:

The advanced binary system analysis focused on the completion of the evaluation of the Kalina Cycle for geothermal applications. Specifically INEL evaluated whether the potential gains from the Kalina Cycle offset the increased complexity of the system imposed by utilizing the Kalina cycle.

Major Reports to Date:

Bliem, C. J., "Kalina Cycles for Geothermal Power Production". May 1986.

1. The first part of the report is a general introduction to the subject of the study.

2. The second part of the report is a detailed description of the methods used in the study.

3. The third part of the report is a discussion of the results of the study and their implications for the field of research.

4. The fourth part of the report is a conclusion and a list of references.

5. The fifth part of the report is a list of appendices.

6. The sixth part of the report is a list of figures and tables.

7. The seventh part of the report is a list of footnotes.

8. The eighth part of the report is a list of abbreviations.

9. The ninth part of the report is a list of symbols.

10. The tenth part of the report is a list of definitions.

11. The eleventh part of the report is a list of acknowledgments.

12. The twelfth part of the report is a list of references.

13. The thirteenth part of the report is a list of appendices.

14. The fourteenth part of the report is a list of figures and tables.

15. The fifteenth part of the report is a list of footnotes.

16. The sixteenth part of the report is a list of abbreviations.

17. The seventeenth part of the report is a list of symbols.

18. The eighteenth part of the report is a list of definitions.

19. The nineteenth part of the report is a list of acknowledgments.

20. The twentieth part of the report is a list of references.

Task: Conversion Technology
Project: Heat Cycle Research

GTD Manager: Raymond LaSala

Heat Cycle Research Facility Testing

Directing Organization:
Idaho Operations Office
550 2nd Street
Idaho Falls, ID 83401

Contractor:
EG&G Idaho Inc.
P.O. Box 1625
Idaho Falls, ID 83415

Project Manager:
Susan Prestwich

Principal Investigator:
G. L. Mines

Telephone: (208) 526-1147(Com)
583-1147(FTS)

Telephone: (208) 526-0260(Com)

Contract Number: 7AC111

Contract Period: 09/01/85-12/01/88

Contract Funding: FY 88 \$430,000.00

Description:

The HCRF project has two main objectives. These are:

1) To develop high performance Rankine or Kalina cycles for moderate and/or high salinity resources, which are beyond the current state-of-the art, and which would result in net plant geofluid effectiveness increases of up to 28% relative to state-of-the-art technology plants.

2) To develop heat cycle working fluids with improved heat transfer and/or energy characteristics such as isobutane-hexane, R22-R114, or propane-benzene mixtures.

Activities/FY88 Milestones:

Complete supercritical cycle testing with impulse turbine, and report results on effects of mixtures and supersaturated turbine expansions on turbine efficiency.

Relocate the HCRF to an alternate location, in California's Imperial Valley. INEL and DOE-ID will identify the next test location and will negotiate an agreement with the owner which will allow the HCRF to operate at this site.

Install a two dimensional expansion nozzle and a reaction turbine during the relocation.

Evaluate data collected at the vertical and near vertical condenser positions to determine the effect of condenser orientation on the performance as well as adequacy of design methods.

Complete preliminary estimates of binary cycle performance with mixed-fluorocarbon working fluids and the applicability of utilizing the modified Kalina cycle.

Accomplishments to Date:

The operation of the Heat Cycle Research Facility, (HCRF), at the DOE Geothermal Test Facility has most recently yielded the following results (FY87):

- The testing of the HCRF at the near horizontal condenser attitude was completed with both the propane-isopentane and the isobutane-hexane working fluid families.
- The HCRF was modified to orient the condenser at the final attitude to be tested; an intermediate inclination, 60 degrees off the horizontal. Testing was then resumed using the isopentane working fluid family.

Major Reports to Date:

Bleim, C.J., et al. "Vaporization at Supercritical Pressures and Counterflow Condensing of Pure and Mixed-Hydrocarbon Working Fluids for Geothermal Power Plants". 21st Intersociety Energy Conversion Engineering Conference. August 1986.

Bleim, C.J., "Zeotropic Mixtures of Halocarbons as Working Fluids in Binary Geothermal Power Generation Cycles". 22nd Intersociety Energy Conversion Engineering Conference. August 1987.

Goswami, D.Y., and Sharpe, L., "Evaluation of Thermal Performance of Direct Contact Heat Exchangers for Vaporizing Mixed Hydrocarbon Working Fluids". May 1986.

Goswami, D.Y., Sharpe, L., Hingorani, S., "Analysis of Tray Thermal Efficiencies of Direct Contact Heat Exchangers for Vaporizing Hydrocarbon Mixtures". ASME/JSME Thermal Engineering Joint Conference. March 1987.

Jacobs, H.R., "Continued Research on Direct Contact Heat Exchangers - Effects of Crystallization". July 1987.

Task: Conversion Technology
Project: Materials Development

GTD Manager: Raymond LaSala

Advanced High Temperature Cements

Directing Organization:
San Francisco Operations Office
1333 Broadway
Oakland, CA 94612

Contractor:
Associated Universities, Inc.
Brookhaven National Laboratory
Upton, NY 11973

Project Manager:
Martin W. Molloy

Principal Investigator:
Lawrence E. Kukacka

Telephone: (415) 273-7945(Com)
536-7945(FTS)

Telephone: (516) 666-3065(Com)
666-3065(FTS)

Contract Number: AS-17-PSD

Contract Period: 04/01/88-09/01/88

Contract Funding: FY 88 \$360,000.00

Description:

The purpose of this project is to improve the durability of cement exposed to a high temperature environment.

Activities/FY88 Milestones:

Complete 1 year downhole exposure test at 300 degree C.

Complete property measurements.

Issue Annual Report.

Accomplishments to Date:

Cements developed that can withstand 250 degree C.

Major Reports to Date:

Milestine, N.B., Kukacka, L.E., Sugama, T., and Carciello, N., "Effects of Carbon Dioxide Attack on Geothermal Cement Grouts". Transactions of Geothermal Resources Council 1986 Annual Meeting. Palm Springs, California. September, 1986.

Sugama, T., Kukacka, L.E., and Galen, B.G., "Advanced High-Temperature Light Weight Foamed Cements for Geothermal Completions". Transactions of Geothermal Resources Council 1986 Annual Meeting. Palm Springs, California. September 1986.

Task: Conversion Technology
Project: Materials Research

GTD Manager: Raymond LaSala

Very High Temperature Well Completion Materials

Directing Organization:
San Francisco Operations Office
1333 Broadway
Oakland, CA 94612

Contractor:
Associated Universities Inc.
Brookhaven National Laboratory
Upton, NY 11973

Project Manager:
Martin W. Molloy

Principal Investigator:
Lawrence E. Kukacka

Telephone: (415) 273-7945(Com)

Telephone: (516) 666-3065(Com)

Contract Number: AS-17-PSD

Contract Period: 07/01/88-09/01/88

Contract Funding:

Description:

The objective of this project is to design durable cost-effective materials of construction for geothermal energy processes.

Activities/FY88 Milestones:

Identify potential systems of interest.

Complete short-term property measurements.

Accomplishments to Date:

Downhole testing of 300 degree C lightweight cements underway in New Zealand as part of a cost-shared effort with Department of Scientific and Industrial Research.

Major Reports to Date:

None.

aplicados, considerando o tempo de
atendimento e a qualidade do atendimento.

10-11-1964
 10-11-1964
 10-11-1964
 10-11-1964

[illegible]

1940-1941 100 (100) 1000000000

706295 03 (04) 10-0000

Figure 4. The effect of the concentration of the polymer on the α -transition temperature of the polymer.

the 1990s, the number of people in the world who are under 15 years of age is expected to increase from 1.1 billion to 1.5 billion. The number of people aged 65 and over is expected to increase from 200 million to 400 million. The number of people aged 15 and over is expected to increase from 3.5 billion to 4.5 billion. The number of people aged 15 and over is expected to increase from 3.5 billion to 4.5 billion. The number of people aged 15 and over is expected to increase from 3.5 billion to 4.5 billion.

the 1990s, the number of people in the world who are under 15 years of age is expected to increase from 1.1 billion to 1.5 billion. The number of people aged 65 and over is expected to increase from 200 million to 400 million. The number of people aged 15 and over is expected to increase from 3.5 billion to 4.5 billion. The number of people aged 15 and over is expected to increase from 3.5 billion to 4.5 billion. The number of people aged 15 and over is expected to increase from 3.5 billion to 4.5 billion.

Task: Conversion Technology
Project: Materials Research

GTD Manager: Raymond LaSala

Non-Mettalic Heat Exhanger Tubing

Directing Organization:
San Francisco Operations Office
1333 Broadway
Oakland, CA 94612

Contractor:
Associated Universities, Inc.
Brookhaven National Laboratory
Upton, NY 11973

Project Manager:
Martin W. Molloy

Principal Investigator:
Lawrence E. Kukacka

Telephone: (415) 273-7945(Com)

Telephone: (516) 666-3065(Com)

Contract Number: AS-17-PSD

Contract Period: 10/01/87-09/01/88

Contract Funding:

Description:

To develop low cost thermally conductive and corrosion resistant tubing for the binary process.

Activities/FY88 Milestones:

Select a location of an industry test site.

Complete prototype unit design.

Complete construction of the prototype unit.

Commence field testing.

Accomplishments to Date:

Conducted measurements of thermal conductivity.

Established wall thickness requirements.

Developed prototype tubes for corrosion rate, scaling factor, and heat transfer measurements.

Major Reports to Date:

None.

100-100000-100000

100-100000-100000

100-100000-100000

100-100000-100000

100-100000-100000

100-100000-100000

100-100000-100000

100-100000-100000

100-100000-100000

100-100000-100000

100-100000-100000

100-100000-100000

100-100000-100000

100-100000-100000

100-100000-100000

100-100000-100000

100-100000-100000

100-100000-100000

100-100000-100000

100-100000-100000

100-100000-100000

100-100000-100000

100-100000-100000

100-100000-100000

Task: Conversion Technology
Project: Materials Research

GTD Manager: Raymond LaSala

Chemical Systems for Lost-Circulation Control

Directing Organization:
San Francisco Operations Office
1333 Broadway
Oakland, CA 94612

Contractor:
Associated Universities, Inc.
Brookhaven National Laboratory
Upton, NY 11973

Project Manager:
Martin W. Molloy

Principal Investigator:
Lawrence E. Kukacka

Telephone: (415) 273-7945(Com)

Telephone: (516) 666-3065(Com)

Contract Number: AS-17-PSD

Contract Period: 02/01/88-09/01/88

Contract Funding:

Description:

This project seeks to develop particulate-filled high-temperature lightweight (approx. 1 gm/cc) materials to reduce the frequency of lost-circulation problems during drilling and well completion operations.

Activities/FY88 Milestones:

Complete laboratory optimization studies on particulate-filled systems.

Complete slot testing.

Complete large-scale flow test at the Sandia Lost Circulation Facility.

Accomplishments to Date:

Systems have been tested successfully at < 200 degrees C.

Major Reports to Date:

Sugama, T., Kukacka, L. E., Warren, J. B., and Galen, B. G., "Bentonite-based ammonium polyphosphate cementitious lost-circulation control materials". Journal of Material Science. 21, 2159-68 1986.

Sugama, T., Kukacka, L. E., Galen, B. G., and Milestone, N. B., "Characteristics of high temperature cementitious lost-circulation control materials for geothermal wells". Journal Of Material Science, in press.

Task: Conversion Technology
Project: Advanced Brine Chemistry

GTD Manager: Gladys Hooper

Advanced Monitoring Instruments

Directing Organization:

Pacific Northwest Laboratory
P.O.Box 999 Battelle Boulevard
Richland, WA 99352

Contractor:

Battelle Memorial Institute (PNL)
Battelle Boulevard
Richland, WA 99352

Project Manager:

Donald R. Segna

Principal Investigator:

Donald W. Shannon

Telephone: (509) 444-8989(Com)

Telephone: (509) 444-3139(Com)

Contract Number:

Contract Period: 10/01/79-OPEN

Contract Funding: FY 88 \$105,000.00

Description:

Development, testing, and application of advanced process chemistry techniques for in-line monitoring at geothermal power plants.

Activities/FY88 Milestones:

Conduct laboratory tests of prototype laser and ultrasonic particle meters using a high-temperature, high-pressure synthetic brine set-up at Pacific Northwest Laboratory prior to field tests.

Accomplishments to Date:

Developed and/or tested the following in-line monitoring instruments since the program began in 1979:

- Leak detectors for brine, hydrocarbon, and cooling water systems;
- Electrodeless conductivity probe to monitor brine quality and detect gases;
- Redox meter (ORP) to detect air intrusions;
- State-of-the-art pH meters to monitor the acidity that affects both corrosion and scaling; and
- Particle counters to monitor solids that could plug injection wells.

Completed a two-year cooperative testing program with Magma Electric Company at Magma's East Mesa power plant in which some serious chemical problems were detected before plant failure.

Developed an in-line monitoring system for the Heber Binary power plant based on field monitoring experience at the East Mesa plant

Entered into a Site Assessment Agreement with San Diego Gas and Electric Company, and carried out a host of process chemistry experiments at the Heber plant.

Developed experimental data to test a geothermal brine computer model being developed by the University of California at San Diego.

Assembled and published a comprehensive handbook of brine treatment processes and other factors associated with injection well longevity.

Major Reports to Date:

Robertus, R. J., Shannon, D. W., and Sullivan, R. G. "Report on Design, Construction and Testing of CO2 Breakout System for Geothermal Brines". PNL-5042, Pacific Northwest Laboratory, Richland, Washington, March 1984.

Robertus, R. J., Sullivan, R. G. and Shannon, D. W. "Operating Manual for Water in Hydrocarbon Leak Detector". PNL-5043, Pacific Northwest Laboratory, Richland, Washington, April 1984.

Robertus, R. J., Shannon, D. W., Sullivan, R. G. and Pool, K. H., "Operating Manual for Hydrocarbon in Water Leak Detector". PNL- 5132, Pacific Northwest Laboratory, Richland, Washington, June 1984.

Robertus, R. J., Shannon, D. W., and Sullivan, R. G. "Special Function Instruments for Binary Cycle Geothermal Power Plants". Geothermal Resources Council Transactions, Vol. 8, pp. 93-97, August, 1984.

Robertus, R. J., Pool, K. H., Kindle, C. H., Sullivan, R. G., Shannon, D. W., and Pierce, D. D. "Leak Detectors for Organic Rankine Cycle Power Plants: On-Line and Manual Methods". PNL-5261, Pacific Northwest Laboratory, Richland, Washington, October, 1984.

Robertus, R. J., Shannon, D. W., Sullivan, R. G., Kindle, C. H., and Pool, K. H. "Research on Geothermal Chemistry and Advanced Instrumentation". PNL-SA-13397. Proceedings of Fourth Annual DOE Geothermal Program Review, Washington, D.C. September 11-12, 1985.

Robertus, R. J., et al. "Field Tests of Corrosion and Chemical Sensors for Geothermal Power Plants". PNL-5782, Pacific Northwest Laboratory, Washington, March, 1986.

Robertus, R. J., Sullivan, R. G., and Shannon, D. W. "Scaling Tendency of Some Moderate Temperature Geothermal Brines". PNL-5991, Pacific Northwest Laboratory, Richland, Washington, September, 1986.

Pool, K.H., Raney, P.J., and Shannon, D.W., "Calcite Solubility in Simulated Geothermal Brines". PNL-6157. Pacific Northwest Laboratory. Richland Washington. February 1987.

Task: Conversion Technology
Project: Advanced Brine Chemistry

GTD Manager: Gladys Hooper

Advanced Monitoring Instruments

Directing Organization:
Richland Operations Office
P.O. Box 550; 825 Jadwin Avenue
Richland, WA 99352

Contractor:
Pacific Northwest Laboratory
P.O. Box 999, Battelle Boulevard
Richland, WA 99352

Project Manager:
Donald R. Segna

Principal Investigator:
Donald W. Shannon

Telephone: (509) 376-8989(Com)
444-8989(FTS)

Telephone: (509) 376-3139(Com)
444-3139(FTS)

Contract Number: AC06-76RL01830

Contract Period: 10/01/79-Open

Contract Funding: FY 88 \$182,000.00

Description:

Development, testing, and application of advanced process chemistry techniques for in-line monitoring at geothermal power plants.

Activities/FY88 Milestones:

Conduct laboratory tests of prototype laser and ultrasonic particle meters using a high-temperature, high-pressure synthetic brine set-up at Pacific Northwest Laboratory prior to field tests.

Accomplishments to Date:

Developed and/or tested the following in-line monitoring instruments since the program began in 1979:

Leak detectors for brine, hydrocarbon, and cooling water systems;

Electrodeless conductivity probe to monitor brine and detect gases;

Redox meter (ORP) to detect air intrusions;

State-of-the-art pH meters to monitor the acidity that affects both corrosion and scaling; and

Particle counters to monitor solids that could plug injection wells.

Completed a two-year cooperative testing program with Magma Electric Company at Magma's East Mesa Binary power plant in which some serious chemical problems were detected before plant failure.

Developed an in-line monitoring system for the Heber Binary power plant based on field monitoring experience at the East Mesa plant.

Entered into a Site Assessment Agreement with San Diego Gas and Electric Company, and carried out a host of process chemistry experiments at the Heber plant. One experiment was to use a filter test to look at scaling tendencies of the Heber plant brine if it were cooled below 150 F.

Developed experimental data to test a geothermal brine computer model being developed by the University of California at San Diego.

Assembled and published a comprehensive handbook of brine treatment processes and other factors associated with injection well longevity.

Major Reports to Date:

Robertus, R. J., Shannon, D. W., and Sullivan, R. G. Report on "Design Construction and Testing of CO₂ Breakout System for Geothermal Brines". PNL-5042, Pacific Northwest Laboratory, Richland, Washington, March 1984.

Robertus, R. J., Sullivan, R. G. and Shannon, D. W. "Operating Manual for Water in Hydrocarbon Leak Detector". PNL-5043, Pacific Northwest Laboratory, Richland, Washington, April 1984.

Robertus, R. J., Shannon, D. W., Sullivan, R. G. and Pool, K. H. "Operating Manual for Hydrocarbon in Water Leak Detector". PNL- 5132, Pacific Northwest Laboratory, Richland, Washington, June 1984.

Robertus, R. J., Shannon, D. W., and Sullivan, R. G. "Special Function Instruments for Binary Cycle Geothermal Power Plants." Geothermal Resources Council Transactions, Vol. 8, pp. 93-97, August 1984.

Robertus, R. J., Pool, K. H., Kindle, C. H., Sullivan, R. G., Shannon, D. W., and Pierce, D. D. "Leak Detectors for Organic Rankine Cycle Power Plants: On-Line and Manual Methods". PNL-5261, Pacific Northwest Laboratory, Richland, Washington, October 1984.

Robertus, R. J., Shannon, D. W., Sullivan, R. G., Kindle, C. H., and Pool, K. H. "Research on Geothermal Chemistry and Advanced Instrumentation." PNL-SA-13397. Proceedings of Fourth Annual DOE Geothermal Program Review, Washington, D.C. September 11-12, 1985.

Robertus, R. J., et al. "Field Tests of Corrosion and Chemical Sensors for Geothermal Power Plants". PNL-5782, Pacific Northwest Laboratory, Washington, March 1986.

Robertus, R. J., Sullivan, R. G., and Shannon, D. W. "Scaling Tendency of Some Moderate Temperature Geothermal Brines". PNL-5991, Pacific Northwest Laboratory, Richland, Washington, September 1986.

Pool, K. H., Raney, P.J., and Shannon, D. W., "Calcite Solubility in Simulated Geothermal Brines". PNL-6157, Pacific Northwest Laboratory, Richland, Washington, February 1987.

Task: Conversion Technology **GTD Manager:** Gladys Hooper
Project: Advanced Brine Chemistry

Biochemical Processes

Directing Organization:
Brookhaven Area Office
Brookhaven National Laboratory
Upton, NY 11973

Contractor:
Associated Universities, Inc.
Brookhaven National Laboratory
Upton, NY 11973

Project Manager:
Jerry Bellows

Principal Investigator:
Eugene T. Premuzic

Telephone: (516) 282-3424(Com)
666-3424(FTS)

Telephone: (516) 282-2893(Com)
666-2893(FTS)

Contract Number: AC06-76RL01830

Contract Period: 07/01/85-Open

Contract Funding: FY 88 \$123,000.00

Description:

Evaluation of biochemical techniques to concentrate and remove toxic metals from geothermal wates.

Activities/FY88 Milestones:

Initiate optimization experiments using Thermophilic Bacteria.

Continue optimization experiments using Acidophilic Bacteria.

Conduct a peer-review of BNL biochemical techniques developed to date.

Issue Annual Progress Report on biochemical processes.

Accomplishments to Date:

Conducted a detailed analyses of current geothermal waste disposal practices and regulations governing the State of California.

Demonstrated that certain micro-organisms can grow in the presence of high concentrations of toxic metals in geothermal sludge and are able to bioaccumulate heavy metals.

Successfully completed a Massachusetts Institute of Technology (MIT) Practice School Study on the economic feasibility of using biochemical processes to detoxify geothermal sludges.

Conducted a host of laboratory experiments with various micro-organisms to evaluate the effectiveness of using different an/or mixed species to remove toxic metals such as chromium, arsenic, nickel, and lead.

Major Reports to Date:

Royce, B. "An Analysis of Environmental Regulations Governing the Disposal of Geothermal Wastes in California". BNL 37577. September 1985.

Premuzic, E. T., Lin, M., Francis, A. J., and Subert, J. "Production of chelating agents by *Pseudomonas aeruginosa* grown in the presence of thorium and uranium". Proc. of the Speciation-85 Seminar, Oxford, England, April 1985, R. A. Bulman and J. R. Cooper, Editors, pp. 391-397, Elsevier, London and New York, 1986.

Premuzic, E. T., Lin, M., Zhu, H. L. and Gremme, A., "Selective absorption capacities for metals in different microorganisms". BNL 37973. Environ. Sci. and Technol. May 1986.

Dobryn, D. G., Brisson, A. L., Lee, C. M., and Roll, S.M., "Bio-leaching of toxic metals from geothermal waste, a preliminary engineering analysis". BNL 38523, February, 1986.

Henry, R.T., Chabria, S. P. and Lee, T. C., "Metal detoxification of aqueous waste by bioaccumulation". BNL 38778, August 1986.

Premuzic, E. T., Kwiatek, W. M., Lin, M., and Jones, K., "Regional variation in the metal composition of residual brine sludges derived from geothermal power plants". Geothermal Sci. and Tech. BNL 38699. 1986.

Task: Conversion Technology
Project: Advanced Brine Chemistry

GTD Manager: Gladys Hooper

Encapsulation Processes

Directing Organization:
Brookhaven Area Office
Brookhaven National Laboratory
Upton, NY 11973

Contractor:
Associated Universities, Inc.
Brookhaven National Laboratory
Upton, NY 11973

Project Manager:
Jerry Bellows

Principal Investigator:
Lawrence E. Kukacka

Telephone: (516) 282-3424(Com)
666-3424(FTS)

Telephone: (516) 282-3065(Com)
666-3065(FTS)

Contract Number: AC02-76CH00016

Contract Period: 07/01/85-Open

Contract Funding: FY 88 \$0.00

Description:

Studies of methods for utilizing waste constituents as non-leachable fillers in composites that can be used for general construction purposes.

Activities/FY88 Milestones:

Conduct preliminary experiments to determine if the silica-rich waste from the Hawaii Puna Facility can be used as a substitute for sand in a standard portland cement formulation.

Continue efforts to develop collaboration programs with industry and other governmental agencies.

Accomplishments to Date:

Established cost-shared efforts with geothermal plant operators in which brine residues from various sites in Imperial Valley, California and the Geysers were obtained.

Identified several portland cement-based mortar (PCM) and concrete (PCC) formulations containing up to 15% weight wet geothermal residues that could meet the State of California regulations required to classify the waste as "non-toxic".

Conducted long-term leach and property measurement tests of the new formulations, and published final results.

Major Reports to Date:

Webster, R. P. and Kukacka, L. E. "Report on Stabilization of Geothermal Residues by Encapsulation". BNL 40384. September, 1987.

SECTION 3.0

GEOPRESSURED RESEARCH

THE
FEDERAL BUREAU OF INVESTIGATION

3.0 GEOPRESSURED RESEARCH

Status

Long-term production tests have shown that the geopressured reservoir will produce more brine than conventional geothermal technology would predict. While this result is desirable in one sense, it is due to unknown causes, and some potential causes might result in reservoir failure despite the initial performance.

The geopressured research program is just entering the energy conversion phase. Previous field activity has centered on production testing of the wells. Some gas production occurred in conjunction with the testing but full utilization of the resource was not attempted. Now, however, the Pleasant Bayou well is being prepared for power generation experiments conducted cooperatively with the Electric Power Research Institute (EPRI). This will be the first electricity generated with geopressured brines.

Description

The geopressured R&D program is developing technology for estimating the size and magnitude of geopressured reservoirs and for producing and utilizing them. Tests are planned on three well operations--the Gladys McCall, the Pleasant Bayou, and the Hulin well.

The Gladys McCall in Louisiana is currently under test and has successfully produced over 27 million barrels of brine. The reservoir has proven larger than initial test data predicted, and research is concentrated on identifying reservoir drive mechanisms to help in developing improved test procedures. A comprehensive test program of variable flow rates, pressure recovery, logging, and coring is planned in the effort to understand the reservoir performance.

Testing will soon start on the Pleasant Bayou well near Houston, Texas. The DOE/EPRI hybrid electrical power generation system will be tested on this well, and work will continue to evaluate reservoir performance.

It is hoped that geopressured R&D can be completed with the testing of the Hulin well in 1992. Technology developed on the Gladys McCall and Pleasant Bayou wells will be used to plan and predict the performance of this well. The Hulin

well is a former gas well contributed by industry, and at 21,000 feet, it is much deeper than any other wells tested. It has the potential to be economical in the future, and will serve as a verification of the geopressured technology developed to date.

A major accomplishment of this program category was development of a successful procedure for scale control at the Gladys McCall. Prior to injection of the scale inhibitor into the reservoir, the well flow was limited to 15,000 barrels/day. With the new procedure, the well has flowed for over a year at a maximum rate. A similar treatment will be prepared for the Pleasant Bayou well.

Operators have been required at the Gladys McCall around the clock. The benign well performance indicates full-time operators are not required, and the Pleasant Bayou well is being instrumented for semiautomatic operation with an operator in attendance or immediately available. If this is successful, the Hulin well will be fully automated with operator requirements similar to oil and gas wells.

All geopressured production well sites have been monitored for subsidence, seismicity, and water quality. No adverse environmental effects have been detected, and it is planned to continue environmental monitoring for two to three years after well testing is completed.

The equipment to be used in the power generation experiments will incorporate both gas combustion and geothermal heat in a hybrid binary cycle. This type system can produce in excess of 15 percent more electricity than the same amount of fuel and geothermal fluid used in separate power plants. The first three months of operation will be a start-up, shakedown, and testing period. Following the intensive test, the facility is scheduled to be operated for nine months on a continuous basis. The intent of this long-term test is to evaluate system reliability and to obtain data over an extended period.

Task: Well Operations GTD Manager: Raymond Fortuna
Project: G.McCall/Pleasant Bayou/Hulin Reservoirs

Well Production Testing

Directing Organization:
Idaho Operations Office
550 2nd Street
Idaho Falls, ID 83401

Contractor:
Eaton Operating Company, Inc.
1980 Post Oak Blvd. Suite 2000
Houston, TX 77056

Project Manager:
Susan Prestwich

Principal Investigator:
Ben Eaton

Telephone: (208) 526-1147(Com)
583-1147(FTS)

Telephone: (713) 627-9764(Com)

Contract Number: AC07-85ID12578

Contract Period: 01/10/85-09/30/93

Contract Funding: FY 88 \$2,390,000.00

Description:

The overall objective of the geopressured research effort is to define the physical and chemical properties of the geopressured-geothermal resource, and to establish the technical feasibility of extracting and utilizing the chemical, thermal, and hydraulic energies contained in geopressured brines. As part of this objective, the well production testing project is designed to test identified geopressured-geothermal resources.

Activities/FY88 Milestones:

Shut in Gladys McCall well to monitor pressure recovery.

Install surface facilities and begin flow testing the Pleasant Bayou well.

Continue to monitor surface pressures at the Hulin well.

Accomplishments to Date:

Began long-term pressure build-up test at Gladys McCall on October 29, 1987.

Major Reports to Date:

Monthly progress reports from the Eaton Operating Company.

[illegible][illegible][illegible][illegible]

the 1990s, the number of people in the world who are illiterate has increased from 400 million to 600 million. The number of illiterate people in the world is expected to reach 700 million by the year 2015. The number of illiterate people in the world is expected to reach 800 million by the year 2020. The number of illiterate people in the world is expected to reach 900 million by the year 2025. The number of illiterate people in the world is expected to reach 1 billion by the year 2030. The number of illiterate people in the world is expected to reach 1.1 billion by the year 2035. The number of illiterate people in the world is expected to reach 1.2 billion by the year 2040. The number of illiterate people in the world is expected to reach 1.3 billion by the year 2045. The number of illiterate people in the world is expected to reach 1.4 billion by the year 2050. The number of illiterate people in the world is expected to reach 1.5 billion by the year 2055. The number of illiterate people in the world is expected to reach 1.6 billion by the year 2060. The number of illiterate people in the world is expected to reach 1.7 billion by the year 2065. The number of illiterate people in the world is expected to reach 1.8 billion by the year 2070. The number of illiterate people in the world is expected to reach 1.9 billion by the year 2075. The number of illiterate people in the world is expected to reach 2 billion by the year 2080. The number of illiterate people in the world is expected to reach 2.1 billion by the year 2085. The number of illiterate people in the world is expected to reach 2.2 billion by the year 2090. The number of illiterate people in the world is expected to reach 2.3 billion by the year 2095. The number of illiterate people in the world is expected to reach 2.4 billion by the year 2100.

Task: Geo. & Engineering Support
Project: Field Tests

GTD Manager: Raymond Fortuna

Field Testing of Geopressured Wells

Directing Organization:
Idaho Operations Office
550 2nd Street
Idaho Falls, ID 83401

Contractor:
University of Texas
Austin Campus
Austin, TX 78712

Project Manager:
Susan Prestwich

Principal Investigator:
Dr. Myron Darfman

Telephone: (208) 526-1147(Com)
583-1808(FTS)

Telephone: (512) 471-1267(Com)

Contract Number: AC07-85NV10412

Contract Period: 01/10/85-09/30/93

Contract Funding: FY 88 \$1,140,000.00

Description:

The objective of the research support program is to define the physical and chemical properties of geopressured-geothermal resources; monitor the environment near the well site, and archive data.

Activities/FY88 Milestones:

Continue research on subsidence, surface and ground water quality, rock mechanics, geology, well logging, reservoir analysis, and aromatic and aliphatic hydrocarbons.

Accomplishments to Date:

No indication of environmental effects caused by geopressured brine production.

Showed through rock mechanics work and reservoir analysis that irreversible rock compaction is not the primary pressure maintenance mechanism in the Gladys McCall reservoir.

Concluded tests that indicated that the production of aliphatic hydrocarbons is flow rate dependent.

Concluded tests that showed that the accuracy of resistivity and S&P log interpretations improved when the variation of the resistivity of the mud make-up water used in the well was minimized.

Major Reports to Date:

"Technical Support For Geopressured-Geothermal Well Activity In Louisiana", Louisiana State University. September 1987.

Monthly Progress Reports.

Task: Energy Conversion **GTD Manager:** Raymond Fortuna
Project: Pleasant Bayou Hybrid Power System

Geopressured Energy Conversion

Directing Organization:
Idaho Operations Office
550 2nd Street
Idaho Falls, ID 83401

Contractor:
Eaton Operating Company, Inc.
1980 Post Oak Blvd. Suite 2000
Houston, TX 77056

Project Manager:
Ken Taylor

Principal Investigator:
Tom Meahl

Telephone: (208) 526-9063(Com)
583-1808(FTS)

Telephone: (713) 224-2660(Com)

Contract Number: AC07-85ID12578

Contract Period: 10/15/85-10/15/90

Contract Funding: FY 88 \$500,000.00

Description:

The objective of the geopressured energy conversion project is to establish the technical feasibility of generating electricity from the chemical, thermal, and hydraulic energy contained in geopressured brines.

Activities/FY88 Milestones:

Begin construction of the hybrid power system.

Complete construction of hybrid power system.

Begin operation of the hybrid power system.

Accomplishments to Date:

Agreement with EPRI to construct and test the system in place.

Equipment on-site at Pleasant Bayou and system design completed.

Major Reports to Date:

None.

SECTION 4.0

HOT DRY ROCK RESEARCH

ALL ABOUT
WEDNESDAY 1988

4.0 HOT DRY ROCK RESEARCH

Status

The Hot Dry Rock (HDR) resource is known to be very large, but the characteristics and limits of the resource reservoir need to be more clearly understood. More cost-effective technology for creating heat exchange fractures and completing and logging HDR wells is needed to develop more economical HDR systems.

Description

Geothermal energy in the form of Hot Dry Rock is abundant and can be found in many states, not just a few geologically favored regions. At depths at which the formation temperatures are high enough to be commercially useful, the combination of temperature, pressure, and chemical processes usually has caused the hot dry rock to be nearly impermeable and very low in free water content. This condition is typical of hot dry rock. The HDR method for recovering heat from the earth's crust is to drill two wells and connect them through a series of cracks or fractures produced by pressurizing one of them. Water pumped down one well is heated as it circulates through the fractures and is brought to the surface through the other well under sufficient pressure to keep it from boiling. The useful heat is removed in heat exchangers, and the water is returned to recirculate and recover more heat. The removed heat can be used directly, or converted to electricity using conventional technology.

Several years ago Los Alamos completed the world's first hot dry rock system at Fenton Hill in the mountains of northern New Mexico. The year-long operation brought hot water to the surface at a temperature of about 140°C (280°F), and at a rate such that it could have heated several hundred houses. Los Alamos has since undertaken development of a larger, deeper and hotter system. Two wells were drilled at Fenton Hill to depths of about 4.3 km (14,000 ft), and they were hydraulically connected by pressurizing one of them. In the largest experiment, nearly 22,000 m³ (6,000,000 gals) of water were pumped into the rock at a pressure of about 48 MPa (7000 lbs/in²).

In May and June of 1986, Los Alamos conducted the 30-day-long Initial Closed Loop Flow

Test in which cold water was pumped down one well through the hot fractured rock, and then returned to the surface via the other well. The goal of this initial reservoir test was to provide preliminary technical information so that a longer and final test of the system can be properly designed. This 30-day-long test met all its objectives. At the conclusion, hot water was brought to the surface at a temperature of 192°C (375°F), and its temperature was still rising. At the end of the test, all parameters that govern successful, efficient energy extraction were improving favorably. The successful completion of this test resulted in international recognition. With this operating data in hand, Los Alamos is designing the equipment for the final, year-long Long Term Flow Test, to demonstrate the ultimate heat capability of the reservoir, and provide the design basis for commercial HDR development.

The Los Alamos HDR Program has pioneered in development of well-logging, sampling, and downhole monitoring instruments resistant to the temperatures, pressures, and corrosive environments of geothermal wells, and in collecting and interpreting information from them. This has been essential to HDR development at Fenton Hill (and directly useful of measurements in steam, hot water, and hot oil and gas wells). However, much remains to be done in continued improvement of the instruments themselves, techniques for using them, transmitting the information to the surface, and analyzing and interpreting that information. An immediate need is improvement of downhole geophones, particularly with regard to their acoustic coupling to the borehole wall. Improvement of the hodogram technique for determining the source locations of those signals will be important. The hodogram method differs from conventional seismic methods of locating fractures in that only one well is needed. Conventional methods use multiple wells, which must be expensively drilled. There is an urgent need for development of a downhole stress-measuring device, and for further improvement of the borehole televiewer.

A basic understanding of the thermal, hydraulic, and mechanical behavior of fractured HDR reservoirs will contribute greatly to successful development of geothermal energy systems in a wide variety of geologic environments. This will involve a combination of

theoretical, laboratory, and field studies with improved computer modeling to analyze, correlate, and interpret their results. To improve the economics of HDR systems by reducing pumping costs and increasing energy production rates, further development is needed of techniques to reduce flow impedance through the fracture system by hydraulic or chemical stimulation. The ability to control the chemistry of the circulating geothermal fluid makes possible important experiments in rock-water interactions, chemical mining, scaling and plugging by mineral deposition, and the incidence, nature, and control of corrosion in geothermal systems. Particularly for energy storage, the huff-puff operating mode (alternate injection of cool water and production of hot water or steam) should be investigated in large-scale field experiments.

The first of these is the fact that the
the second is the fact that the
the third is the fact that the
the fourth is the fact that the
the fifth is the fact that the
the sixth is the fact that the
the seventh is the fact that the
the eighth is the fact that the
the ninth is the fact that the
the tenth is the fact that the
the eleventh is the fact that the
the twelfth is the fact that the
the thirteenth is the fact that the
the fourteenth is the fact that the
the fifteenth is the fact that the
the sixteenth is the fact that the
the seventeenth is the fact that the
the eighteenth is the fact that the
the nineteenth is the fact that the
the twentieth is the fact that the
the twenty-first is the fact that the
the twenty-second is the fact that the
the twenty-third is the fact that the
the twenty-fourth is the fact that the
the twenty-fifth is the fact that the
the twenty-sixth is the fact that the
the twenty-seventh is the fact that the
the twenty-eighth is the fact that the
the twenty-ninth is the fact that the
the thirtieth is the fact that the
the thirty-first is the fact that the
the thirty-second is the fact that the
the thirty-third is the fact that the
the thirty-fourth is the fact that the
the thirty-fifth is the fact that the
the thirty-sixth is the fact that the
the thirty-seventh is the fact that the
the thirty-eighth is the fact that the
the thirty-ninth is the fact that the
the fortieth is the fact that the
the forty-first is the fact that the
the forty-second is the fact that the
the forty-third is the fact that the
the forty-fourth is the fact that the
the forty-fifth is the fact that the
the forty-sixth is the fact that the
the forty-seventh is the fact that the
the forty-eighth is the fact that the
the forty-ninth is the fact that the
the fiftieth is the fact that the
the fifty-first is the fact that the
the fifty-second is the fact that the
the fifty-third is the fact that the
the fifty-fourth is the fact that the
the fifty-fifth is the fact that the
the fifty-sixth is the fact that the
the fifty-seventh is the fact that the
the fifty-eighth is the fact that the
the fifty-ninth is the fact that the
the sixtieth is the fact that the
the sixty-first is the fact that the
the sixty-second is the fact that the
the sixty-third is the fact that the
the sixty-fourth is the fact that the
the sixty-fifth is the fact that the
the sixty-sixth is the fact that the
the sixty-seventh is the fact that the
the sixty-eighth is the fact that the
the sixty-ninth is the fact that the
the seventieth is the fact that the
the seventy-first is the fact that the
the seventy-second is the fact that the
the seventy-third is the fact that the
the seventy-fourth is the fact that the
the seventy-fifth is the fact that the
the seventy-sixth is the fact that the
the seventy-seventh is the fact that the
the seventy-eighth is the fact that the
the seventy-ninth is the fact that the
the eightieth is the fact that the
the eighty-first is the fact that the
the eighty-second is the fact that the
the eighty-third is the fact that the
the eighty-fourth is the fact that the
the eighty-fifth is the fact that the
the eighty-sixth is the fact that the
the eighty-seventh is the fact that the
the eighty-eighth is the fact that the
the eighty-ninth is the fact that the
the ninetieth is the fact that the
the ninety-first is the fact that the
the ninety-second is the fact that the
the ninety-third is the fact that the
the ninety-fourth is the fact that the
the ninety-fifth is the fact that the
the ninety-sixth is the fact that the
the ninety-seventh is the fact that the
the ninety-eighth is the fact that the
the ninety-ninth is the fact that the
the hundredth is the fact that the

Task: Fenton Hill Operations **GTD Manager:** James E. Rannels
Project: Phase II Energy Extraction System

Energy Extraction System/Ancillary Activities/Site Support

Directing Organization: Albuquerque Operations Office P.O. Box 5400 Albuquerque, NM 87115	Contractor: Los Alamos National Laboratory (UC) P.O. Box 1663 Los Alamos, NM 87545
Project Manager: George P. Tennyson	Principal Investigator: Hugh Murphy
Telephone: (505) 846-3219(com) 846-3219(FTS)	Telephone: (505) 667-7811(com) 842-7811(FTS)
Contract Number:	Contract Period: 10/01/83-Open
Contract Funding: FY 88 \$4,050,000.00	

Description:

The primary objective of the three projects under the Fenton Hill Operations Task is to create and control a multiple-fractured reservoir with extended longevity (20 years), and larger potential (20 to 35 MW).

Activities/FY88 Milestones:

- Complete final repair of EE-2 wellbore.
- Side track well to interact with man-made reservoir.
- Install 7-inch liner to the surface.
- Begin procurement of surface equipment for the Long Term Flow Test.

Accomplishments to Date:

- Completed the 30-day flow test in the reservoir.
- Created a large man-made reservoir using hydraulic fracturing.
- Created a large closed loop circulation system for power generation.

Major Reports to Date:

Fiscal Year 1985 Annual Report; Fiscal Year 1984 Annual Report; Fiscal Year 1983 Annual Report.

THE UNITED STATES OF AMERICA
DEPARTMENT OF JUSTICE
FEDERAL BUREAU OF INVESTIGATION

MEMORANDUM FOR THE DIRECTOR, FBI

SUBJECT: [Illegible]
DATE: [Illegible]
TO: [Illegible]
FROM: [Illegible]

[Illegible text block]

[Illegible text block]

[Illegible text block]

[Illegible text block]

[Illegible text block]

[Illegible text block]

[Illegible text block]

[Illegible text block]

[Illegible text block]

Task: Science & Engineering Support GTD Manager: James E. Rannels
Project: Instrumentation/Engineering/Applications

Tools & Instrument./Reservoir Engin./Technology Applications

Directing Organization:
Albuquerque Operations Office
P.O. Box 5400
Albuquerque, NM 87115

Contractor:
Los Alamos National Laboratory (UC)
P.O. Box 1663
Los Alamos, NM 87545

Project Manager:
George P. Tennyson

Principal Investigator:
Hugh Murphy

Telephone: (505) 846-3219(Com)
846-3219(FTS)

Telephone: (505) 667-7811(Com)
843-7811(FTS)

Contract Number:

Contract Period: 10/01/83-Open

Contract Funding: FY 88 \$1,150,000.00

Description:

The objectives of the project are as follows:

To provide both scheduled and unscheduled calibration and maintenance for the Fenton Hill Operations;

To develop chemical techniques for assessing the life of the reservoir, and evaluate the size of the reservoir.

Activities/FY88 Milestones:

Continue development of new techniques for microseismic analyses.

Develop chemical techniques for assessing the life of the reservoir during the Long Term Flow Test.

Accomplishments to Date:

Developed a set of high temperature-high pressure tools.

Developed microseismic techniques for estimating the size of newly created reservoirs.

Constructed a model for reservoir operations.

Major Reports to Date:

Fiscal Year 1985 Annual Report; Fiscal Year 1984 Annual Report; Fiscal Year 1983 Annual Report.

... ..
... ..
... ..

... ..

... ..
... ..
... ..

... ..
... ..

... ..
... ..

... ..

... ..

... ..

... ..

... ..
... ..

... ..
... ..

... ..

... ..

... ..
... ..

... ..

... ..

... ..
... ..

... ..

... ..

... ..

... ..

SECTION 5.0

MAGMA RESEARCH

1944-1945
1946-1947

5.0 MAGMA RESEARCH

Status

The scientific feasibility of extracting energy from molten rock has been proven by experiments at a shallow lava lake in Hawaii. The scientific and engineering technology to locate such chambers and to extract energy from them has yet to be developed and tested.

Description

The thermal energy contained in magmatic systems represents a huge potential resource. The thrust of the magma energy extraction R&D program is to determine the engineering feasibility of locating, accessing, and utilizing magma as a viable resource. This effort is a follow-on to the DOE/OBES-funded Magma Energy Research Project that determined the scientific feasibility of the magma energy concept.

The rate of energy extraction from magma has a direct influence on the economic viability of the concept. Therefore, ongoing research is directed at developing a fundamental understanding of the establishment and long-term operation of closed-loop and open-, direct-contact heat exchanges in a crustal magma body. An open heat exchanger, in which fluid is circulated through the interconnecting fissures and fractures in the solidified region around drilling tubing, offers the promise of very high rates of heat transfer. Studies show that an open heat exchanger can be formed by solidifying magma around a cooled borehole and that the resulting mass will be extensively fractured by thermally induced stresses. Numerical models indicate that high-quality thermal energy can be delivered at the wellhead at nominal rates from 25 to 30 MWe. It is known that optimum well circulation rates can be found that depend on the heat transfer characteristics of the magma heat exchanger and the thermodynamic power conversion efficiencies of the surface plant.

Previous heat extraction experiments indicated that most magma configurations are practical for utilization at energy extraction rates that are comparable to or better than those in conventional geothermal fields. The high temperatures of the magma resource and the corresponding high temperatures of the working fluid lead directly to efficient, conventional

techniques for generating electricity. Processes have also been considered for using this high-quality energy to generate transportable fuels in addition to electricity.

A primary long-range target of this effort is to conduct an energy extraction experiment directly in a molten, crustal magma body. Critical to determining engineering feasibility are several key technology tasks: (1) to obtain detailed geophysical definition of potential magma targets; (2) to characterize the magma environment and select compatible engineering materials; (3) to develop drilling and completion techniques for entry into a magma body; and (4) to develop heat extraction technology.

Task: Long Valley Operations
Project: Drilling and Engineering

GTD Manager: Gladys Hooper

Long Valley Well

Directing Organization:
Albuquerque Operations Office
P.O. Box 5400
Albuquerque, NM 87115

Contractor:
Sandia National Laboratories
P.O. Box 5800
Albuquerque, NM 87185

Project Manager:
George P. Tennyson

Principal Investigator:
James C. Dunn

Telephone: (505) 846-3219(Com)
846-3219(FTS)

Telephone: (505) 844-4715(Com)
844-4715(FTS)

Contract Number: AC04-76DP00789

Contract Period: 10/20/83-Open

Contract Funding: FY 88 \$745,000.00

Description:

Drill a multiphased deep observation well in the southern portion of the Long Valley Caldera to determine the nature of previously identified geophysical anomalies.

Activities/FY88 Milestones:

Establish an expert panel to:

- Assess the feasibility of drilling in the eastern moat of the Long Valley Caldera;
- Develop a scientific plan for the well
- Establish specific objectives for each drilling phase of the well.

Deliver letter of intent to the BLM and the Forest Service concerning the Long Valley Drilling project.

Select drilling engineer and drilling contractor for Long Valley Well.

Work with State and Federal agencies to obtain the necessary permits.

Spud the Long Valley Well and initiate the drilling of Phase I.

Accomplishments to Date:

Evaluated twenty-one potential magma sites in terms of suitability for conducting a long-term energy extraction experiment.

Selected two primary sites - Long Valley Caldera and Coso Hot Springs - for more detailed evaluations and surveys.

Selected Long Valley Caldera as the best candidate site, primarily on the extensive geophysical and geological studies completed in the area.

Entered into an agreement with Santa Fe Geothermal to utilize its drill site in the southern portion of the Long Valley Caldera.

Major Reports to Date:

Hardee, H. C., "Shallow Magma Targets in the Western U.S.", Sandia National Laboratories Report SAND83-1361, Albuquerque, NM. 1984.

Carson, C. C., "Selection of Promising Sites for Magma Energy Experiments", Sandia National Laboratories Report SAND84-2171, Albuquerque, NM. 1985.

Task: Long Valley Operations
Project: Supporting Science

GTD Manager: Gladys Hooper

Geophysics

Directing Organization:
Albuquerque Operations Office
P.O. Box 5400
Albuquerque, NM 87115

Contractor:
Sandia National Laboratories
P.O. Box 5800
Albuquerque, NM 87185

Project Manager:
George P. Tennyson

Principal Investigator:
James C. Dunn

Telephone: (505) 846-3219(Com)
846-3219(FTS)

Telephone: (505) 844-4715(Com)
844-4715(FTS)

Contract Number: AC04-76DP00789

Contract Period: 10/20/83-Open

Contract Funding: FY 88 \$75,000.00

Description:

The objective of the Geophysics project is to ensure that sufficient and accurate geophysical and geoscience measurements are carried out in conjunction with the drilling of the observation well.

Activities/FY88 Milestones:

Develop a scientific plan for geoscience measurements in the Long Valley Well at each drilling stage in conjunction with universities, national laboratories, and industry.

Accomplishments to Date:

Establish a magma energy science committee to develop a detailed science plan for the various stages of the observation well.

Major Reports to Date:

Rundle, J. B., et al, " Seismic Imaging in Long Valley, California, by Surface and Borehole Techniques: An Investigation of Active Tectonics", EOS V. 66, n 18, 1985.

Rundle, J. B., Carrigan, Hardee, and Luth. "Deep Drilling to the Magmatic Environment in Long Valley Caldera", EOS, V. 67, n 21, 1986.

Elbring, G. J., and Rundle, J. B., "Analysis of Borehole Seismograms from Long Valley, California: Implications for Caldera Structure", J. of Geophys. Res., V. 91, n B12, 1986.

Task: Lab. & Engineering Support
Project: Geochemistry & Materials

GTD Manager: Gladys Hooper

Geochemistry/Materials

Directing Organization:
Albuquerque Operations Office
P.O. Box 5400
Albuquerque, NM 87115

Contractor:
Sandia National Laboratories
P.O. Box 5800
Albuquerque, NM 87185

Project Manager:
George P. Tennyson

Principal Investigator:
James C. Dunn

Telephone: (505) 846-3219(Com)
846-3219(FTS)

Telephone: (505) 844-4715(Com)
844-4715(FTS)

Contract Number: ACO4-76DP00789

Contract Period: 10/20/83-Open

Contract Funding: FY 88 \$200,000.00

Description:

The objective of the Geochemistry/Materials project is to conduct experiments aimed at characterizing magma at the primary site and defining its 'compatibility' with commercially available materials.

Activities/FY88 Milestones:

Experimentally determine importance of several mechanisms, (pH, solution composition, mineral defects), on Feldspar dissolution in aqueous solutions.

Measure quartz dissolution as a function of temperature, pressure, and orientation using rotating disc autoclaves.

Accomplishments to Date:

Evaluated 17 commercially available materials and determined that nickel, iron, and cobalt-based super alloys have very good chemical resistance and strengths in a rhyolitic magma environment.

Compositions of the Long Valley and Coso magma chambers were estimated from analyses of rhyolite glass at the surface.

Volatile concentrations were obtained by analyzing glass inclusions in rapidly quenched tephra.

An experimental procedure for testing magma/metal compatibility was developed.

Major Reports to Date:

Westrich, H. R., Weirick, Cygan, Reece, Hlava, Stockman, and Gerlach.
"FY1984 and FY1985 Geochemistry and Materials Studies in Support of the Magma
Energy Extraction Program", Sandia National Laboratories Report SAND85-2843,
Albuquerque, NM, 1986.

Task: Lab. & Engineering Support
Project: Energy Extraction

GTD Manager: Gladys Hooper

Energy Extraction

Directing Organization:
Albuquerque Operations Office
P.O. Box 5400
Albuquerque, NM 87115

Contractor:
Sandia National Laboratories
P.O. Box 5800
Albuquerque, NM 87185

Project Manager:
George P. Tennyson

Principal Investigator:
James C. Dunn

Telephone: (505) 846-3219(Com)
846-3219(FTS)

Telephone: (505) 844-4715(Com)
846-4715(FTS)

Contract Number: AC04-76DP00789

Contract Period: 10/20/83-Open

Contract Funding: FY 88 \$200,000.00

Description:

The objective of the Energy Extraction project is to formulate methodology for the efficient extraction of energy from magma by conducting system studies and experiments.

Activities/FY88 Milestones:

- Measure nucleation rates for experimentally vesiculated glasses.
- Report initial results of thermodynamic power cycle analysis.
- Complete basic magma chamber convection experiment.
- Report results of secondary fracturing experiments.
- Complete direct contact heat exchanger experiments at Univ. of Utah.

Accomplishments to Date:

Conducted a series of system analyses to evaluate the economics of magma power generation.

Numerical simulation of an energy extraction process completed using a simplified mathematical model of open and closed extraction systems.

Fracturing experiments were initiated to provide qualitative fracturing behavior and thermal stress fracturing data for validation of analytical models; and for reproducing the conditions of cooling with phase change that occur in magma.

Major Reports to Date:

Dunn, J. C., "Energy Extraction from Crustal Magma Bodies", ASME/JSME Thermal Engineering Joint Conference Proceedings, V. II.

APPENDIX A

GEOHERMAL R&D PROGRAM

PARTICIPANTS

1. 1111. 18

2. 1111. 18

3. 1111. 18

DOE HEADQUARTERS

U.S. Department of Energy
CE-324 Room 5F067
1000 Independence Ave., S.W.
Washington, DC 20585
Phone (202) 586 - (ext.)
FTS 896 - (ext.)

Office of Renewable Energy

Robert L. San Martin	9275	<u>Deputy Assistant Secretary</u> for Conservation and Renewable Energy
Ronald R. Loose	8084	<u>Director</u> , Office of Renewable Energy Technologies

Geothermal Technology Division

John E. Mock	5340	<u>Director</u> , Geothermal Technology Division
Allan J. Jelacic	6054	<u>Team Leader</u> , Geothermal Geosciences Research
David B. Lombard	4952	<u>Team Leader</u> , Geothermal Conversion Research
Ralph E. Burr	5335	<u>Manager</u> , Geothermal Loan Guaranty Program, Technology Transfer
Raymond Fortuna	1711	<u>Manager</u> , Geopressured Resources
Gladys Hooper	1146	<u>Manager</u> , Advanced Brine Chemistry, Instrumentation, Magma Energy Extraction
Raymond J. LaSala	4198	<u>Manager</u> , Heat Cycle Research, Materials
Lew W. Pratsch	1512	<u>Manager</u> , Hard Rock Penetration Research
James E. Rannels	8070	<u>Manager</u> , Hot Dry Rock
Marshall Reed	8076	<u>Manager</u> , Hydrothermal Reservoir Research, Brine Injection Technology

DOE OPERATIONS OFFICES (WITH GEOTHERMAL PROGRAMS)

George Tennyson	U.S. Department of Energy Albuquerque Operations Office P.O. Box 5400 Albuquerque, NM 87115 (505) 846-3219	Senior Program Manager
Peggy Brookshier	U.S. Department of Energy Idaho Operations Office 550 2nd Street Idaho Falls, ID 83401 (208) 526-1403	Geothermal Project Manager

NATIONAL LABORATORIES (GEOTHERMAL RESEARCH)

Larry Kukacka	Brookhaven National Laboratory Upton, NY 11973 (516) 282-3065	Advanced Materials Research
Marcelo Lippman	University of California Lawrence Berkeley Laboratory Berkeley, CA 94720 (415) 486-5035	Reservoir Research
John Whetten	University of California Los Alamos National Laboratory P.O. Box 1663 Los Alamos, NM 87545 (505) 667-6722	Hot Dry Rock Research
James Dunn	Sandia National Laboratories P.O. Box 5800 Albuquerque, NM 87185 (505) 844-4715	Geothermal Drilling Organization, Hard Rock Penetration, Permeability En- hancement, Magma Resources
Susan Steiger	Idaho National Engineering Laboratory P.O. Box 1625 Idaho Falls, ID 83415	Geopressured Resources
Jud Whitbeck	(208) 528-1879	Energy Conversion

SUBCONTRACTORS

Universities

- Stanford University
- Massachusetts Institute of Technology (MIT)
- Louisiana State University (LSU)
- University of Southwestern Louisiana (USL)
- University of Texas at Austin (UTA)
- Pennsylvania State University
- North Carolina Agricultural and Technical State University (NCA&T)
- San Diego State University (SDSU)

Private Contractors

- Meridian Corporation
- Oregon Institute of Technology (OIT)

APPENDIX B

PROJECTS BY TASK NAMES

REPORT

LINE WAT - 30-105

PROJECTS BY TASK NAMES

PROJECT TASK NAME	GTD PROJECT MANAGER	PROJECT TITLE
Advanced Brine Chemistry	Gladys Hooper	Advanced Monitoring Instruments
Advanced Brine Chemistry	Gladys Hooper	Biochemical Processes
Advanced Brine Chemistry	Gladys Hooper	Encapsulation Processes
Brine Injection Technology	Marshall Reed	Tracer Development and Interpretation
Brine Injection Technology	Marshall Reed	Geophysical Methods for Injection Monitoring
Brine Injection Technology	Marshall Reed	Modeling Injected Fluid Migration
Drilling and Engineering	Gladys Hooper	Long Valley Well
Energy Extraction	Gladys Hooper	Energy Extraction
Exploration Technology	Marshall Reed	Geophysical Methods to Locate Reservoirs
Field Tests	Raymond Fortuna	Field Testing of Geopressured Wells
Gladys McCall/Pleasant Bayou/Hulin	Raymond Fortuna	Well Production Testing
Reservoirs Geochemistry & Materials	Gladys Hooper	Geochemistry/Materials
Geothermal Drilling Organization	Lew Pratsch	Borehole Televiewer
Geothermal Drilling Organization	Lew Pratsch	Foam Lost Circulation Tool
Geothermal Drilling Organization	Lew Pratsch	Downhole Air Turbine
Geothermal Drilling Organization	Lew Pratsch	High Temperature Elastomer Development
Geothermal Technology Organization	Marshall Reed	Cooperative Research
Heat Cycle Research	Raymond LaSala	Heat Cycle Research Facility Testing
Heat Cycle Research	Raymond LaSala	System Analysis
Heat Cycle Research	Raymond LaSala	Condenser Attitude Tests
Heat Cycle Research	Raymond LaSala	Metastable Supersaturated Expansion
Heat Cycle Research	Raymond LaSala	Advanced Heat Rejection System
Instrumentation	Lew Pratsch	Radar Fracture Mapping Tool
Instrumentation	Lew Pratsch	Acoustical Data Telemetry
Instrumentation/Engineering/Applications	James Rannels	Tools & Instrumentation/Reservoir Engineering/Technology Applications

PROJECT TASK NAME	GTD PROJECT MANAGER	PROJECT TITLE
Lost Circulation Control	Lew Pratsch	Lost Circulation Analysis
Lost Circulation Control	Lew Pratsch	Lost Circulation Testing
Materials Development	Raymond LaSala	Advanced High Temperature Cements
Materials Research	Raymond LaSala	Non-Metallic Heat Exchanger Tubing
Materials Research	Raymond LaSala	Chemical Systems for Lost-Circulation Control
Materials Research	Raymond LaSala	Very High Temperature Well Completion Materials
Phase II Energy Extraction System	James Rannels	Energy Extraction System/Ancillary Activities/Site Support
Pleasant Bayou Hybrid Power System	Raymond Fortuna	Geopressured Energy Conversion
Reservoir Analysis	Marshall Reed	Fracture Detection and Mapping
Reservoir Analysis	Marshall Reed	Identification of Reservoir Processes
Reservoir Analysis	Marshall Reed	Predictive Modeling of Reservoir Behavior
Rock Penetration Mechanics	Lew Pratsch	PDC Bit Development
Rock Penetration Mechanics	Lew Pratsch	High Temperature Drilling
Rock Penetration Mechanics	Lew Pratsch	Analysis of Drill String Dynamics
Rock Penetration Mechanics	Lew Pratsch	Coring Technology Development
Supporting Science	Gladys Hooper	Geophysics