

## DISTRIBUTION SHEET

To Distribution	From Characterization Plans and Reports	Page 1 of 2 Date 5-15-95
Project Title/Work Order Tank 241-B-203 Push Mode Core Sampling and Analysis Plan (WHC-SD-WM-TSAP-003), Revision 0		EDT No. 610045 ECN No. N/A

Name	MSIN	Text With All Attach.	Text Only	Attach./Appendix Only	EDT/ECN Only
------	------	-----------------------	-----------	-----------------------	--------------

ONSITE

U. S. Department of Energy -  
Richland Field Office

C. A. Babel	S7-54	X			
P. R. Hernandez	S7-54	X			
W. Liou	S7-54	X			
N. W. Willis	S7-54	X			

MACTEC

J. P. Haney	S7-73	X			
-------------	-------	---	--	--	--

Westinghouse Hanford Company

R. N. Campeau	S7-04	X			
A. B. Cockrell	S7-12	X			
T. F. Dale	T6-20	X			
S. J. Eberlein	R2-12	X			
G. D. Forehand	S7-31	X			
R. K. Fuller	T6-31	X			
V. W. Hall	H4-19	X			
J. Jo (2)	R2-12	X			
W. J. Kennedy	S7-03	X			
J. G. Kristofzski	T6-06	X			
J. S. Lee	S7-03	X			
A. D. Olguin	S7-04	X			
A. D. Rice	T6-06	X			
R. H. Stubbs	S7-12	X			
C. L. Thomas	H4-19	X			
T. C. Tribble	S1-57	X			
Central Files	L8-04	X			
O.S.T.I. (2)	L8-07	X			
TCRC (2)	R2-12	X			

OFFSITE

U. S. Department of Energy - Headquarters  
Office of Environmental Restoration and  
Waste Management EM-563  
12800 Middlebrook Road  
Germantown, MD 20874

K. T. Lang X  
J. A. Poppiti X

Los Alamos Technical Associates  
750 Swift, Suite 14  
Richland, WA 99352

A. T. Dicenso X  
C. J. Lindquist X  
T. T. Tran X  
G. P. Westleigh X

5

Sta. 4  
MAY 16 1995

ENGINEERING DATA TRANSMITTAL

2. To: (Receiving Organization) SAMPLING OPERATIONS	3. From: (Originating Organization) TWRS/CHARACTERIZATION PLANS AND REPORTS	4. Related EDT No.: N/A
5. Proj./Prog./Dept./Div.: TWRS ENG/CPR	6. Cog. Engr.: J. Jo	7. Purchase Order No.: N/A
8. Originator Remarks: FOR ORIGINAL RELEASE		9. Equip./Component No.: N/A
		10. System/Bldg./Facility: TANK FARMS
11. Receiver Remarks:		12. Major Assm. Dwg. No.: N/A
		13. Permit/Permit Application No.: N/A
		14. Required Response Date: 5-15-95

15. DATA TRANSMITTED					(F)	(G)	(H)	(I)
(A) Item No.	(B) Document/Drawing No.	(C) Sheet No.	(D) Rev. No.	(E) Title or Description of Data Transmitted	Approval Designator	Reason for Transmittal	Originator Disposition	Receiver Disposition
1	WHC-SD-WM-TSAP-003		0	TANK 241-B-203 PUSH MODE CORE SAMPLING AND ANALYSIS	Q	1,2	1	

16. KEY					
Approval Designator (F)		Reason for Transmittal (G)		Disposition (H) & (I)	
E, S, Q, D or N/A (see WHC-CM-3-5, Sec.12.7)		1. Approval	4. Review	1. Approved	4. Reviewed no/comment
		2. Release	5. Post-Review	2. Approved w/comment	5. Reviewed w/comment
		3. Information	6. Dist. (Receipt Acknow. Required)	3. Disapproved w/comment	6. Receipt acknowledged

17. SIGNATURE/DISTRIBUTION (See Approval Designator for required signatures)											
(G)	(H)	(J) Name	(K) Signature	(L) Date	(M) MSIN	(J) Name	(K) Signature	(L) Date	(M) MSIN	(G)	(H)
2	1	Cog. Eng. J. Jo	<i>J. Jo</i>	5-15-95							
2	1	Cog. Mgr. J.G. Kristofzski	<i>J.G. Kristofzski</i>	5/15/95							
2	1	QA T.C. Tribble	<i>T.C. Tribble</i>	5/15/95							
		Safety									
		Env.									
2	1	J.S. Lee	<i>J.S. Lee</i>	5-16-95							

18. J. Jo <i>J. Jo</i> Signature of EDT Originator Date 5-15-95	19. J.S. Lee <i>J.S. Lee</i> Authorized Representative Date for Receiving Organization Date 5-15-95	20. J.G. Kristofzski <i>J.G. Kristofzski</i> Cognizant Manager Date Date 5/15/95	21. DOE APPROVAL (if required) Ctrl. No. <input type="checkbox"/> Approved <input type="checkbox"/> Approved w/comments <input type="checkbox"/> Disapproved w/comments
--------------------------------------------------------------------------	--------------------------------------------------------------------------------------------------------------	-------------------------------------------------------------------------------------------	-------------------------------------------------------------------------------------------------------------------------------------------------------------------------------------

## RELEASE AUTHORIZATION

Document Number: WHC-SD-WM-TSAP-003, REV 0

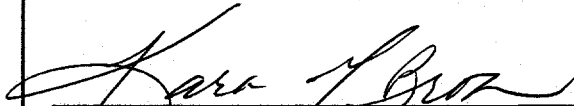
Document Title: Tank 241-B-203 Push Mode Core Sampling and Analysis Plan

Release Date: 5/15/95

This document was reviewed following the procedures described in WHC-CM-3-4 and is:

**APPROVED FOR PUBLIC RELEASE**

WHC Information Release Administration Specialist:

  
Kara M. Broz

May 15, 1995

TRADEMARK DISCLAIMER. Reference herein to any specific commercial product, process, or service by trade name, trademark, manufacturer, or otherwise, does not necessarily constitute or imply its endorsement, recommendation, or favoring by the United States Government or any agency thereof or its contractors or subcontractors.

This report has been reproduced from the best available copy. Available in paper copy and microfiche. Printed in the United States of America. Available to the U.S. Department of Energy and its contractors from:

U.S. Department of Energy  
Office of Scientific and Technical Information (OSTI)  
P.O. Box 62  
Oak Ridge, TN 37831  
Telephone: (615) 576-8401

Available to the public from: U.S. Department of Commerce  
National Technical Information Service (NTIS)  
5285 Port Royal Road  
Springfield, VA 22161  
Telephone: (703) 487-4650

**SUPPORTING DOCUMENT**

1. Total Pages **19**

2. Title

Tank 241-B-203 Push Mode Core Sampling and Analysis Plan

3. Number

**WHC-SD-WM-TSAP-003**

4. Rev No.

**0**

5. Key Words

Tank 241-B-203, Push Mode Core Sampling and Analysis Plan

6. Author

Name: **Jaiduk Jo**

Signature *Jaiduk Jo*

Organization/Charge code **8E480/MDR21**

7. Abstract

N/A

8. RELEASE STAMP

OFFICIAL RELEASE  
BY WHC **5**  
DATE **MAY 16 1995**  
*sta. 4*

## **DISCLAIMER**

**Portions of this document may be illegible in electronic image products. Images are produced from the best available original document.**

# Tank 241-B-203 PUSH MODE CORE SAMPLING AND ANALYSIS PLAN

## DISCLAIMER

This report was prepared as an account of work sponsored by an agency of the United States Government. Neither the United States Government nor any agency thereof, nor any of their employees, makes any warranty, express or implied, or assumes any legal liability or responsibility for the accuracy, completeness, or usefulness of any information, apparatus, product, or process disclosed, or represents that its use would not infringe privately owned rights. Reference herein to any specific commercial product, process, or service by trade name, trademark, manufacturer, or otherwise does not necessarily constitute or imply its endorsement, recommendation, or favoring by the United States Government or any agency thereof. The views and opinions of authors expressed herein do not necessarily state or reflect those of the United States Government or any agency thereof.

---

Prepared for the U.S. Department of Energy  
Office of Environmental Restoration  
and Waste Management

by

Los Alamos Technical Associates  
8633 Gage Boulevard  
Kennewick, Washington 99336

TABLE OF CONTENTS

1.0 SAMPLING AND ANALYSIS OBJECTIVES . . . . . 1

2.0 SAMPLING EVENT REQUIREMENTS . . . . . 1

    2.1 SAMPLING PREPARATION . . . . . 1

    2.2 SAMPLING REQUIREMENTS . . . . . 1

3.0 LABORATORY ANALYSIS REQUIREMENTS . . . . . 2

    3.1 ANALYSIS SCHEME . . . . . 2

    3.2 SPECIFIC METHODS AND ANALYSES . . . . . 8

    3.3 INSUFFICIENT SEGMENT RECOVERY . . . . . 8

    3.4 PRIORITIES OF REQUESTED ANALYSES . . . . . 8

4.0 QUALITY ASSURANCE . . . . . 11

    4.1 LABORATORY OPERATIONS . . . . . 11

    4.2 SAMPLE COLLECTION . . . . . 11

    4.3 SAMPLE CUSTODY . . . . . 11

5.0 ORGANIZATION . . . . . 12

6.0 EXCEPTIONS, CLARIFICATIONS, AND ASSUMPTIONS . . . . . 12

    6.1 EXCEPTIONS TO DQO REQUIREMENTS . . . . . 12

    6.2 CLARIFICATIONS AND ASSUMPTIONS . . . . . 12

7.0 DELIVERABLES . . . . . 13

    7.1 PROGRESS REPORTS . . . . . 13

    7.2 FORMAT I REPORTING . . . . . 14

    7.3 FORMAT III REPORTING . . . . . 14

8.0 CHANGE CONTROL . . . . . 14

9.0 REFERENCES . . . . . 15

LIST OF TABLES

1: Tank B-203 Chemical, Radiological, and Physical Analytical Requirements . . .	9
2: Tank B-203 Project Key Personnel List . . . . .	12

LIST OF FIGURES FOR APPENDIX A

1: Solid Analysis Flowchart . . . . .	5
2: Liquid Analysis Flowchart . . . . .	6
3: Sample Analysis and Reporting Flowchart . . . . .	7

LIST OF ABBREVIATIONS FOR APPENDIX A

ACL	Analytical Chemistry Laboratory
B-203	Tank 241-B-203
DOE	Department of Energy
DQO	data quality objective
DSC	Differential Scanning Calorimetry
DST	double-shell tank
HHF	hydrostatic head fluid
IC	ion chromatography
ICP	inductively coupled plasma (atomic emission spectroscopy)
LiBr	lithium bromide
NCPLX	non-complexed
RCRA	<i>Resource Conservation and Recovery Act of 1976</i>
RSST	Reactive System Screening Tool
SAP	Sampling and Analysis Plan
SARP	Safety and Analysis Report Packaging
SST	single-shell tank
TCP	Tank Characterization Plan
TGA	thermogravimetric analysis
TOC	total organic carbon
TWRS	Tank Waste Remediation System
WHC	Westinghouse Hanford Company

## 1.0 SAMPLING AND ANALYSIS OBJECTIVES

This Sampling and Analysis Plan (SAP) will identify characterization objectives pertaining to sample collection, laboratory analytical evaluation, and reporting requirements in accordance with the *Tank Safety Screening Data Quality Objective* (Babad and Redus 1994). This Data Quality Objective (DQO) is described in the Tank Characterization Plan (Jo, 1995) for tank 241-B-203 (B-203). This SAP will also identify procedures and requirements for collecting and characterizing samples from tank B-203 by the core sampling method.

## 2.0 SAMPLING EVENT REQUIREMENTS

### 2.1 SAMPLING PREPARATION

Before push core sampling can be performed on tank B-203, available risers must be identified for use in this sampling event. The selected risers must be inspected and prepared to confirm their ability to be used in sampling. Safety hazards must be identified for which special precautions must be made.

### 2.2 SAMPLING REQUIREMENTS

As of January 31, 1995, tank B-203 stored 193 kL (51 kgal) of waste, which corresponds to a waste height of 668 cm (263 inches). The waste was comprised of 3.8 kL (1 kgal) of supernatant, and 190 kL (50 kgal) of sludge with no saltcake or pumpable liquid (Brevick et al. 1994). This coincides with the current Hanlon document which states the same content volumes (Hanlon 1994).

Tank B-203 is currently scheduled to be core sampled. Two core samples shall be collected from 2 of 3 risers (2, 6, or 7) of the tank. If a different riser is capable of meeting the intent of other requirements in the DQO, it may be used if the riser number is recorded and approved in writing in advance by the sampling cognizant engineer. Risers used may be recorded on a permanent data sheet, or recorded directly in the work package.

Based on current waste volume information, each of the core samples is expected to consist of fourteen segments. Segments two through fourteen are expected to be 48 cm (19 inches). Segment one is expected to be 41 cm (16 inches). It should be noted that the sampling objective is to obtain a vertical profile of the waste; therefore, more or less segments may need to be taken depending on the accuracy of the current waste volume records. For detailed information regarding the sampling activities, refer to work package ES-95-00241. This document contains the operating procedures and the chain-of-custody records for this sampling event.

One field blank for this tank shall be obtained by filling a sampler with deionized water. This field blank is to accompany the samples to the laboratory hot cell. All collected samples shall be shipped to the laboratory according to procedure TO-080-090 ("*Load/Transport Sample Cask(s)*"). Core samples shall be transported to the laboratory within three calendar days of each segment's removal from the tank.

Occasionally, hydrostatic head fluid (HHF), with lithium bromide (LiBr) as a tracer, may be used to aid in the collection of the core samples. If HHF is used, Sampling Operations must state this in the chain-of-custody form that accompanies the sample to the laboratory, and must also provide an HHF blank for the laboratory. The HHF blank shall consist of a container filled with HHF (with LiBr tracer) from the same batch of HHF used during the sampling. It shall be analyzed for Li (and Br if the Li notification limit is exceeded) in order to determine the concentration of the tracer at the time the core was taken. Only one HHF blank per tank is required in addition to the field/trip blank (sampler filled with water).

### 3.0 LABORATORY ANALYSIS REQUIREMENTS

#### 3.1 ANALYSIS SCHEME

Flowcharts depicting the general safety screening sample breakdown and analysis scheme are presented in Figures 1, 2, and 3. These steps are described in detail to provide the hot cell and laboratory chemists with guidance for the breakdown or analysis of the segments and may be altered as appropriate by the performing laboratory. Several analyses listed in Table 1 require a 45-day reporting time, as noted. The 45-day reporting format, Format III, is explained in Section 7.3.

As a precautionary measure, the Safety and Analysis Report for Packaging (SARP) in the tank procedure T0-080-090 ("Load/Transport Sample Cask(s)") has been reviewed for any safety issues involved with transportation of core samples from tank B-203. For core samples from tank B-203, the shipping containers must be vented every 47 days to release retained gas.

Any decisions, observations, or deviations made to this work plan or during the sample breakdown shall be documented in writing with justifications. These decisions and observations shall also be reported in the data report. The reporting formats for analyses are contained in Table 1.

- Step 1      Receive core samples at the laboratory in accordance with approved procedures.
- Step 2      Conduct the following on the material from each extruded segment:
- ▶      Perform a visual examination of the segment(s).
  - ▶      Record observations. This may include a sketch of the extruded core sample in addition to written documentation of pertinent descriptive information such as color, texture, homogeneity, and consistency.
  - ▶      Take color photographs and/or a videotape to visually document the extruded core segments.
- Step 3      Does the segment contain drainable liquids?
- Yes: Proceed to Step 4A
- No: Proceed to Step 5

- Step 4A Separate any drainable liquid from the solids. Measure and record the volume. Retain drainable liquids for further processing.
- Step 4B Is the segment 100% drainable liquid?
- Yes: Proceed to Step 11  
No: Proceed to Step 5

**SOLIDS PATH**

- Step 5 Divide each extruded core segment into half-segments.
- Step 6 Homogenize each half-segment using the appropriate, approved procedure.
- Step 7 Will a homogenization test be performed?
- Yes: Proceed to Step 8  
No: Proceed to Step 9

**NOTE:** One half-segment per core, at a minimum, should be used if a homogenization test is to be performed. Additional tests may be performed at the laboratory's discretion.

- Step 8 Conduct the homogenization test by taking 1 to 2 g aliquots from widely separated locations of the homogenized subsample. Conduct the homogenization test in accordance with Bell (1993).
- Step 9 Collect sufficient aliquots from each homogenized subsample to perform the appropriate preparations and analyses listed in Table 1 in duplicate.

**NOTE:** If there is an insufficient amount of sample available in any subsample to perform all required analyses on the half-segment, notify the Characterization Program within one business day and follow the prioritization of analyses given in Section 3.4.

- Step 10 Remove at least 20 mL and up to 40 mL of each homogenized subsample for the archive sample (Bratzel 1994).

**LIQUIDS PATH**

- Step 11 Closely inspect the liquid sample for the presence and approximate volume of any potential organic layers. Does the sample contain any immiscible (potentially organic) layers?
- Yes: Proceed to Step 12A  
No: Proceed to Step 13
- Step 12A Report any visually observed immiscible (potential organic) layer immediately by the early notification system (Section 7.2).

WHC-SD-WM-TSAP-003, REV. 0

Step 12B Separate and retain the potential organic layer for possible future analysis.

NOTE: Steps 13 through 17 shall be performed on the remaining (probable aqueous) liquid layer only.

Step 13 Filter the remaining liquid sample through a 0.45 micron filter.

Step 14 Is there greater than 1 gram of solid on the filter?

Yes: Proceed to Step 15

No: Proceed to Step 16

Step 15 Archive the solids for possible future analysis (Bratzel 1994).

Step 16 Remove sufficient aliquots from the sample to perform the appropriate analyses listed in Table 1 in duplicate.

Step 17 Archive at least 20 mL and up to 40 mL of the drainable liquid as the liquid archive (Bratzel 1994).

**PRIMARY ANALYSIS PATH**

Step 18 Perform primary analyses as listed in Table 1.

Step 19 Compare the primary analysis data with notification limits.

Step 20A Do the results exceed the notification limits (Table 1)?

Yes: Proceed to Step 20B

No: Proceed to Step 23

Step 20B Report results exceeding the notification limits using Format I reporting deliverable requirements as listed in Section 7.2.

**SECONDARY ANALYSIS PATH**

Step 21 Perform secondary analyses according to Table 1.

Step 22A Do the secondary analyses exceed the notification limits?

Yes: Proceed to Step 22B

No: Proceed to Step 23

Step 22B Report results exceeding the notification limits using Format I reporting deliverable requirements as listed in Section 7.2.

Step 23 Report results as listed in Section 7.0.

Figure 1: Solid Analysis Flowchart

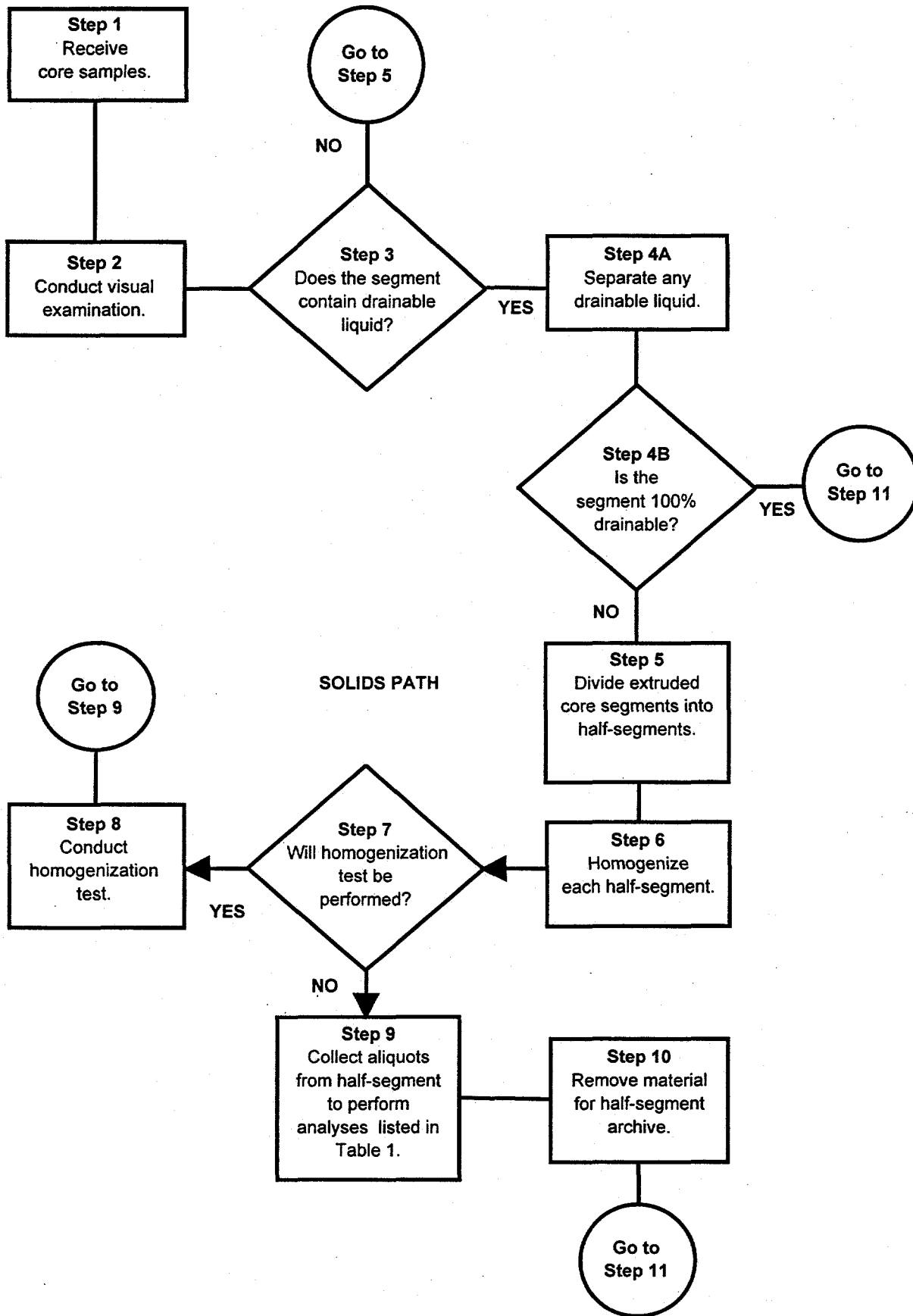


Figure 2: Liquid Analysis Flowchart

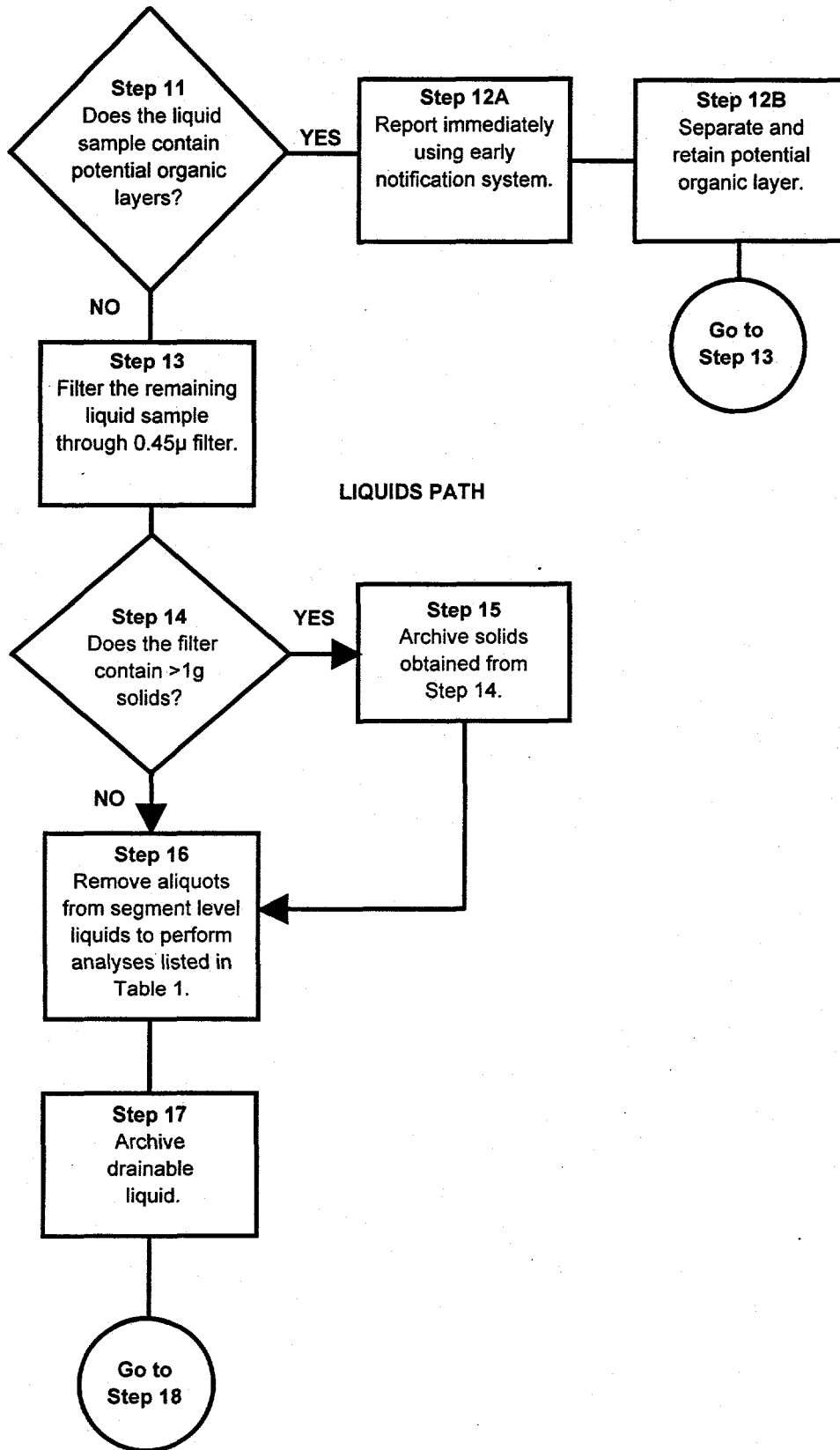
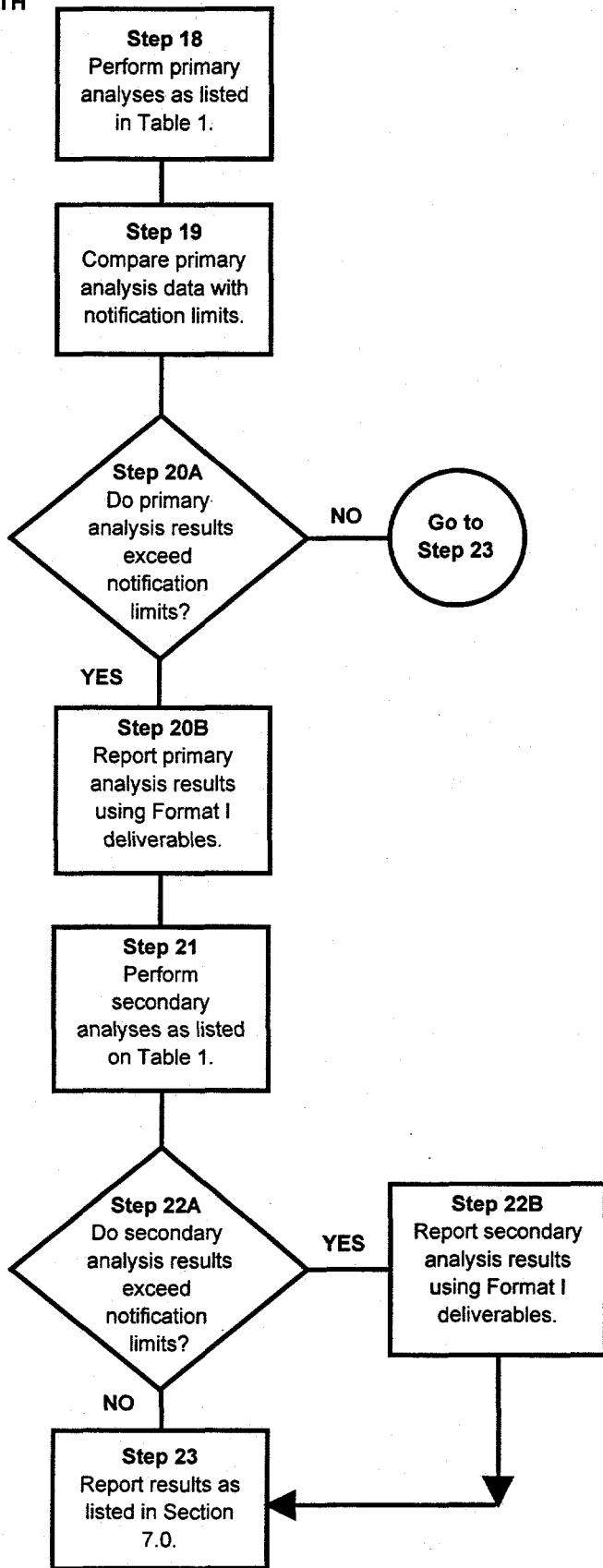


Figure 3: Sample Analysis and Reporting Flowchart  
ANALYSES PATH



### 3.2 SPECIFIC METHODS AND ANALYSES

The analyses in Table 1, to be performed on the tank B-203 core samples, are based on the safety screening DQO referenced in Section 1.0. The laboratory procedure numbers, which shall be used for the analyses, are included in the table.

### 3.3 INSUFFICIENT SEGMENT RECOVERY

If the amount of material recovered from core samples taken from tank B-203 is insufficient to perform the analyses requested and to permit a minimum 20 mL archive per segment, the laboratory shall notify the Tank Cognizant Engineer, listed in Table 2, within one working day. A prioritization of the analyses requested in this document is given in Section 3.4. Any analyses prescribed by this document, but not performed, shall be identified in the appropriate data report, with justification for non-performance.

### 3.4 PRIORITIES OF REQUESTED ANALYSES

Confirmation of prioritization levels, or revision of sample breakdown procedures may be provided by the Characterization Program based upon the sample recovery, readily observable physical property distinctions within the sample, and the requested breakdown procedures as provided in Section 3.1. The priority of an analysis is specified by its designation as a primary or secondary analysis. Further prioritization will be determined by the program on a DQO basis.

Table 1: Tank B-203 Chemical, Radiological, and Physical Analytical Requirements

SOLID ANALYSES														
Project Name	B-203 Push Mode Core Sample					COMMENTS					REPORTING LEVELS			
Plan Number	WHC-SD-WM-TSAP-003, REV. 0					Homogenization Test - Per Laboratory Discretion					FORMAT I			
PROGRAM	PROGRAM CONTACTS					Field Blank - Required					FORMAT II			
A. Safety Screening	Safety Screening E. J. Lipke					Hot Cell Blank - Not Required					FORMAT III			
TWRS	J. Jo					HHF Blank - Required					FORMAT IV			
						TANK					FORMAT V			
						B-203					FORMAT VI			
						#CORES					Special			
						2								
PROGRAM	PRIMARY ANALYSES		SAMPLE <sup>1</sup>	PREP <sup>2</sup>	QUALITY CONTROL <sup>3</sup>					CRITERIA		FOR-MAT		
	METHOD	ANAL.			WHC PROCEDURE	½ SEG SLDG	DUP	SPK/MSD	BLK	CALIB STD	PR		AC	UNITS
A	DSC	Energy	X	d	ea smpl	N/A	N/A	ea AB	±10	90-110	J/g <sup>5</sup>	> 481	unknown	I, III
A	TGA	% H <sub>2</sub> O	X	d	ea smpl	N/A	N/A	ea AB	±10	90-110	wt%	< 17	unknown	I, III
A	Alpha	Total Alpha	X	f or a	ea smpl	1/mtrx	ea PB	ea AB	±10	90-110	µCi/g	> 41	unknown	I, III
A	ICP <sup>11</sup>	Li	X <sup>11</sup>	f or a	ea smpl	see 7	ea PB	ea AB	±10	90-110	µg/g	> 100	unknown	I, III
PROGRAM	SECONDARY ANALYSES		SAMPLE <sup>1</sup>	PREP <sup>2</sup>	QUALITY CONTROL <sup>3</sup>					CRITERIA		FOR-MAT		
	METHOD	ANAL.			WHC PROCEDURE	½ SEG SLDG	DUP	SPK/MSD	BLK	CALIB STD	PR		AC	UNITS
A	Distillation <sup>8</sup>	CN	X	d	ea smpl	1/mtrx	ea AB	ea AB	±10	90-110	µg/g	> 39,000	unknown	I, III
A	Sep. & α counting <sup>9</sup>	Pu-239/240	X	f	ea smpl	1/mtrx <sup>6</sup>	ea PB	ea AB	±10	90-110	µCi/g	> 41	unknown	I, III
A	ICP <sup>9</sup>	Fe	X	f or a	ea smpl	see 7	ea PB	ea AB	±10	90-110	µg/g	none	unknown	III
A	ICP <sup>9</sup>	Mn	X	f or a	ea smpl	see 7	ea PB	ea AB	±10	90-110	µg/g	none	5,770	III
A	ICP <sup>9</sup>	U	X	f or a	ea smpl	see 7	ea PB	ea AB	±10	90-110	µg/g	none	unknown	III
A	IC <sup>10</sup>	Br	X	w	ea smpl	1/mtrx	ea PB	ea AB	±10	90-110	µg/g	> 1200	unknown	I, III
A	RSST <sup>8</sup>	Energy	X	d	N/A	N/A	N/A	ea AB	±10	90-110	J/g <sup>5</sup>	> 481	unknown	I, III
A	Hot Persulfate <sup>6</sup>	TOC	X	d	ea smpl	1/mtrx	ea AB	ea AB	±10	90-110	µg C/g	> 30,000	unknown	I, III

<sup>1</sup>½ SEG SLDG-½ segment, sludge  
<sup>2</sup>d-direct, f-fusion, a-acid, w-water  
<sup>3</sup>PR-precision, AC-accuracy, ea-each, smpl-sample, DUP-duplicate, SPK/MSD-spike and matrix spike duplicate, AB-analytical batch, PB-preparation blank, N/A-not applicable, mtrx-matrix  
<sup>4</sup>Units for notification limits and expected range are those listed in the "units" column.  
<sup>5</sup>Dry weight basis.  
<sup>6</sup>Tracer or carrier may be used in place of a spike and results corrected for recovery.  
<sup>7</sup>Either serial dilutions or matrix spikes will be performed.  
<sup>8</sup>These analyses required if DSC exceeds notification limits. The RSST method, yet to be proceduralized, may be found in WHC-SD-WM-TP-104.  
<sup>9</sup>Performed only if total alpha exceeds notification limit.  
<sup>10</sup>Performed only if Li exceeds notification limit.  
<sup>11</sup>If the chain-of-custody form indicates that HHF fluid with LiBr tracer was used to obtain the segment, Li analysis is to be performed on that segment.

Table 1: Tank B-203 Chemical, Radiological, and Physical Analytical Requirements

LIQUID ANALYSES															
Project Name	COMMENTS					REPORTING LEVELS									
B-203 Push Mode Core Sample	Homogenization Test - Per Laboratory Discretion					FORMAT I		Early Notify							
WHC-SD-WM-TSAP-003 REV. 0	Field Blank - Required					FORMAT II		Process Control							
PROGRAM		PROGRAM CONTACTS			Safety Screening							FORMAT III		Safety Screening	
A. Safety Screening		E. J. Lipke			HHF Blank - Required							FORMAT IV		Waste Management	
TWRS		J. Jo			TANK							FORMAT V		RCRA Compliance	
					B-203							FORMAT VI		Special	
					2										
PROGRAM	PRIMARY ANALYSES		SAMPLE <sup>1</sup>	PREP <sup>2</sup>	QUALITY CONTROL <sup>3</sup>				CRITERIA		FOR-MAT				
	METHOD	ANAL.			WHC PROCEDURE	FB & S-LEV LIQ	DUP	SPK/MSD	BLK	CALIB STD		PR	AC	UNITS	NOTIFICATION LIMIT <sup>4</sup>
A	DSC	Energy	LA-514-113	X	d	ea smpl	N/A	N/A	ea AB	±10	90-110	J/g <sup>5</sup>	> 481	unknown	I, III
A	TGA	% H <sub>2</sub> O	LA-560-112	X	d	ea smpl	N/A	N/A	ea AB	±10	90-110	wt%	< 17	unknown	I, III
A	ICP <sup>11</sup>	Li	LA-505-151	X <sup>11</sup>	d <sup>6</sup>	ea smpl	see 7	ea AB	ea AB	±10	90-110	µg/mL	> 100 <sup>10</sup>	unknown	I, III
A	Visual	Organic Layer	LA-519-151	X	d	N/A	N/A	N/A	N/A	N/A	N/A		presence	unknown	I, III
PROGRAM	SECONDARY ANALYSES		SAMPLE <sup>1</sup>	PREP <sup>2</sup>	QUALITY CONTROL <sup>3</sup>				CRITERIA		FOR-MAT				
	METHOD	ANAL.			WHC PROCEDURE	FB & S-LEV LIQ	DUP	SPK/MSD	BLK	CALIB STD		PR	AC	UNITS	NOTIFICATION LIMIT <sup>4</sup>
A	Distillation <sup>8</sup>	CN	LA-695-102	X	d <sup>6</sup>	ea smpl	1/mtrix	ea AB	ea AB	±10	90-110	µg/mL	> 39,000 <sup>10</sup>	unknown	I, III
A	IC <sup>9</sup>	Br	LA-533-105	X	d <sup>6</sup>	ea smpl	1/mtrix	ea AB	ea AB	±10	90-110	µg/mL	> 1,200 <sup>10</sup>	unknown	I, III
A	RSST <sup>8</sup>	Energy	see 8 below	X	d	N/A	N/A	ea AB	ea AB	±10	90-110	J/g <sup>5</sup>	> 481	unknown	I, III
A	Hot Persulfate <sup>8</sup>	TOC	LA-342-100	X	d <sup>6</sup>	ea smpl	1/mtrix	ea AB	ea AB	±10	90-110	µg C/m	> 30,000 <sup>10</sup>	unknown	I, III

<sup>1</sup>S-LEV LIQ-liquid taken from the segment level, FB-field blank

<sup>2</sup>d-direct, f-fusion, a-acid, w-water

<sup>3</sup>PR-precision, AC-accuracy, ea-each, smpl-sample, DUP-duplicate, SPK/MSD-spike and matrix spike duplicate, AB-analytical batch, PB-preparation blank, N/A-not applicable, mtrix-matrix

<sup>4</sup>Units for notification limits and expected range are those listed in the "units" column.

<sup>5</sup>Dry weight basis.

<sup>6</sup>Direct liquid samples may be diluted in acid or water to adjust to proper sample size and/or pH.

<sup>7</sup>Either serial dilutions or matrix spikes will be performed.

<sup>8</sup>These analyses required if DSC exceeds notification limits. The RSST method, yet to be proceduralized, may be found in WHC-SD-WM-TP-104.

<sup>9</sup>Performed only if Li exceeds notification limit.

<sup>10</sup>Converted from µg/g limit assuming a liquid density of 1.0 g/mL.

<sup>11</sup>If the chain-of-custody form indicates that HHF fluid with LiBr tracer was used to obtain the segment, Li analysis is to be performed on that segment.

4.0 QUALITY ASSURANCE

4.1 LABORATORY OPERATIONS

The WHC 222-S Laboratory has a quality assurance program plan (Meznarich 1994) and a quality assurance project plan (Taylor 1993) that shall provide the primary direction for the quality assurance when analyzing the waste tank core samples at the WHC 222-S Laboratory. Additionally, the *Hanford Analytical Services Quality Assurance Plan* (DOE 1994), when implemented (currently scheduled for August 31, 1995), shall be used as quality assurance requirements.

Method-specific quality control such as calibrations and blanks are also found in the analytical procedures. Sample quality control (duplicates, spikes, standards) are identified in Table 1. If no criteria are provided in Table 1, the performing laboratory shall perform to its quality assurance plan(s).

4.2 SAMPLE COLLECTION

Two core samples are to be taken from tank B-203 and shipped to the performing laboratory by Sampling Operations in accordance with work package ES-95-00241. This work package shall also initiate the chain-of-custody for the samples. Approved procedure TO-080-090 ("Load/Transport Sample Cask(s)") is to be used during the sampling event. Samples shall be identified by a unique number before being shipped to the performing laboratory. The sampling team is responsible for documenting any problems and procedural changes affecting the validity of the sample in a field notebook. Sampling Operations shall enter this information in the comment section of the chain-of-custody form for addition to the data reports. As part of this sampling event, a field blank and occasionally a HHF blank are required (Section 2.2).

Sampling Operations should transport each segment collected to the performing laboratory within 1 working day of removing the segment from the tank, but must transport each segment within 3 calendar days. The field blank and HHF blank shall each count as a segment. Sampling Operations is responsible for verbally notifying the WHC 222-S Laboratory (373-2435) at least 24 hours in advance of an expected shipment.

4.3 SAMPLE CUSTODY

The chain-of-custody form is initiated by the sampling team as described in work package ES-95-00241. Core samples are shipped in a cask and sealed with a Waste Tank Sample Seal.

WASTE TANK SAMPLE SEAL	
Supervisor:	Sample No.:
Date of Sampling:	Time of Sampling:
Shipment No.:	Serial No.:

The sealed and labeled samples are shipped to the laboratory along with the chain-of-custody form. The receipt and control of samples in the WHC 222-S Laboratory are described in laboratory procedure LO-090-101.

## 5.0 ORGANIZATION

The organization and responsibility of key personnel involved with this tank B-203 characterization project are listed in Table 2.

Table 2: Tank B-203 Project Key Personnel List

Individual	Organization	Responsibility
J. Jo	TWRS Characterization Plans and Reports	Tank B-203 Tank Characterization Plan Cognizant Engineer
E. J. Lipke	WHC Safety Program	Safety Screening Point of Contact
East Tank Farm Operations Shift Manager	Tank Farm Operations	200 East Tank Farm Point of Contact if Action Limit is Exceeded (373-2689)

## 6.0 EXCEPTIONS, CLARIFICATIONS, AND ASSUMPTIONS

### 6.1 EXCEPTIONS TO DQO REQUIREMENTS

In the safety screening DQO, it is specified that cyanide analyses are to be run on a quarter-segment level and that the notification limit for the DSC analysis is 125 cal/g (523 J/g). The revised ferrocyanide DQO (Meacham et al. 1994) has changed the requirements such that the cyanide analysis is now to be run on a half-segment level and the DSC notification limit is 115 cal/g (dry weight basis). The next revision to the safety screening DQO will incorporate this change. This Sampling and Analysis Plan specifies that cyanide is to be run on a half-segment basis and that notification shall be made if the DSC value exceeds 481 J/g dry weight basis (115 cal/g).

### 6.2 CLARIFICATIONS AND ASSUMPTIONS

A number of clarifications and assumptions relating to the notification limits or decision thresholds identified in the applicable DQO efforts need to be made with respect to the analyses in Table 1. Each of these issues are discussed as follows:

- ▶ Any exotherm (in J/g or cal/g) determined by DSC must be reported on a dry weight basis as shown in equation (1) using the weight percent water determined from thermogravimetric analysis.

$$\text{Exotherm (dry wt)} = \frac{[\text{exotherm (wet wt)} \times 100]}{(100 - \% \text{ water})} \quad (1)$$

NOTE: If there is greater than 90 percent water in a sample, converting to a dry weight basis may lead to a large error in the DSC value. However, the conversion is still required.

- ▶ The safety screening DQO (Babad and Redus 1994) requires that additional analyses be performed if total alpha activity measures greater than 1 g/L. Total alpha is measured in  $\mu\text{Ci/g}$  rather than g/L. To convert the notification limit for total alpha into a number more readily usable by the laboratory, it was assumed that all alpha decay originates from Pu-239. The notification limit may then be calculated as shown in equation (2):

$$\left(\frac{1 \text{ g}}{\text{L}}\right) \left(\frac{1 \text{ L}}{10^3 \text{ mL}}\right) \left(\frac{1 \text{ mL}}{\text{density g}}\right) \left(\frac{0.0615 \text{ Ci}}{1 \text{ g}}\right) \left(\frac{10^6 \mu\text{Ci}}{1 \text{ Ci}}\right) = \frac{61.5 \mu\text{Ci}}{\text{density g}} \quad (2)$$

NOTE: If a density of 1.5 g/mL is assumed for solid material, the notification limit becomes 41  $\mu\text{Ci/g}$ .

- ▶ The safety screening DQO, upon which the analyses in Table 1 are based, does not sufficiently address the analyses of the field blank or any drainable liquid present. In order to characterize the tank waste adequately, all analyses performed on the solids for the safety screening DQO, with the exception of total alpha analyses, shall also be performed on any drainable liquids. To adequately determine if any contamination of the sample material has occurred, the field blank shall be analyzed for those primary analyses preferred on segment-level liquids.

## 7.0 DELIVERABLES

All analyses of tank B-203 waste material shall be reported as Format I and/or III as indicated in Table 1. Additional information regarding reporting formats is given in "Revised Interim Tank Characterization Plan Guidance" (Schreiber 1994a).

### 7.1 PROGRESS REPORTS

Each laboratory performing analyses on tank B-203 waste material from this core sampling project shall provide monthly status reports to the Characterization Program. This report shall contain 1) a summary of the activities on the analysis of tank B-203, 2) preliminary results to the program, and 3) schedule and cost information on a DQO basis.

Monthly and accumulative costs will be compared to the base as part of the progress report. Monthly variances greater than 10% or \$10,000, and accumulative variances greater than \$50,000 from the estimated costs or schedule must be explained in the report. Cost reporting shall consist of the following:

1. budgeted cost of work scheduled
2. monthly cost (actual cost of work performed)
3. year-to-date costs (actual cost of work performed)

Schedule reporting shall consist of the following:

1. monthly schedule
2. year-to-date schedule

## 7.2 FORMAT I REPORTING

Table A-1 contains the notification limits for each analyte. Any results exceeding their notification limits shall be reported by calling the East Tank Farm Operations Shift Manager at 373-2689 and the Characterization Program Office (Schreiber 1994b). This verbal notification must be followed within 1 working day by written communication, documenting the observations, to Characterization Plans and Reports, Characterization Program Office, Safety Screening Representative, and Process Control (Schreiber 1995). Additional analyses for verification purposes may be contracted between the performing laboratory and the contacts above by a revision to this document, or by a letter of instruction.

## 7.3 FORMAT III REPORTING

A Format III report, containing the results of the primary safety screening analyses shall be issued to the Safety Screening Representative, Characterization Plans and Reports, Characterization Program Office, Los Alamos Technical Associates, Tank Characterization Resource Center, Process Control, and the Tank Characterization Database representative (Schreiber 1995) within 45 days of receipt of the last segment of the last core sample at the laboratory loading dock. The DSC and TGA scans have been requested due to the interpretive nature of the analysis. If analyses for the safety screening secondary analytes are required, these results shall be provided within 90 days of receipt of the last segment of the last core sample at the laboratory loading dock. No calibration data are requested for these reports. Detailed information regarding the contents of this reporting format are given in Schreiber (1994a).

## 8.0 CHANGE CONTROL

Under certain circumstances, it may become necessary for the performing laboratory to make decisions concerning a sample without review of the data by the customer or the Characterization Program. These changes shall be documented through the use of internal characterization change notices or analytical deviation reports for minor low-impact changes and documented in applicable laboratory records. All significant changes (such as changes in scope) shall be documented by Characterization Plans and Reports via an Engineering Change Notice to this plan. All changes shall also be clearly documented in the final data package.

Additional analysis of sample material from this characterization project at the request of the Characterization Program shall be performed according to a revision of this Tank Characterization Plan.

9.0 REFERENCES

- Babad, H. and K. S. Redus, 1994, *Tank Safety Screening Data Quality Objective*, WHC-SD-WM-SP-004, Rev 0, Westinghouse Hanford Company, Richland, Washington.
- Bell, K. E., 1993, *Tank Waste Remediation System Tank Waste Characterization Plan*, WHC-SD-WM-PLN-047, Rev. 1, Westinghouse Hanford Company, Richland, Washington.
- Bratzel, D. R., 1994, Letter to S. M. Joyce, "Archiving Requirements", 7E720-94-125, dated June 23, 1994.
- Brevick, C. H., L. A. Gaddis, and W. W. Pickett, 1994, *Historical Tank Content Estimate for the Northeast Quadrant of the Hanford 200 East Areas*, WHC-SD-WM-ER-349, Rev. 0, ICF Kaiser Hanford Company, Richland, Washington.
- DOE, 1994, *Hanford Analytical Services Quality Assurance Plan*, DOE/RL-94-55, Rev. 0, U. S. Department of Energy, Richland Field Office, Richland, Washington.
- Haller, C. S., 1994, *Fiscal Year 1995 Tank Waste Remediation System Tank Waste Analysis Plan*, WHC-SD-WM-PNL-091, Rev. 0, Westinghouse Hanford Company, Richland, Washington.
- Hanlon, B. M., 1995, *Waste Tank Summary for Month Ending January 31, 1994*, WHC-EP-0182-82, Westinghouse Hanford Company, Richland, Washington.
- Jo, J., 1995, *Tank 241-B-203 Tank Characterization Plan*, WHC-SD-WM-TP-358, Westinghouse Hanford Company, Richland, Washington.
- Meacham, J. E., R. J. Cash, G. T. Dukelow, H. Babad, J.W. Buck, C. M. Anderson, B. A. Pulsipher, J. J. Toth, P. J. Turner, 1994, *Data Requirements for the Ferrocyanide Safety Issue Developed through the Data Quality Objectives Process*, WHC-SD-WM-DQO-007, Rev. 0, Westinghouse Hanford Company, Richland, Washington.
- Mezmarich, H. K., 1994, *Quality Assurance Program Plan for Laboratory Analysis and Process Testing*, WHC-SD-CP-QAPP-003, Rev. 1, Westinghouse Hanford Company, Richland, Washington.
- Schreiber, R. D., 1994a, Letter to C. S. Haller, "Revised Interim Tank Characterization Plan Guidance", 7E720-94-121, dated May 13, 1994.
- Schreiber, R. D., 1994b, Letter to J. G. Kristofzski, "Format I Reporting Requirement", 7E720-94-128, dated August 15, 1994.
- Schreiber, R. D., 1995, Letter to J. G. Kristofzski, "REVISION Point of Contact/Distribution List", 71520-95-108 REISSUE, dated March 23, 1995.
- Taylor, L.H., 1993, *Quality Assurance Project Plan for Chemical Analysis of Highly Radioactive Mixed Waste Samples in Support of Environmental Activities on the Hanford Site*, WHC-SD-CP-QAPP-002 Rev. 0A, Westinghouse Hanford Company, Richland, Washington.
- Whelan, T. E., 1994, *TWRS Characterization Program Quality Assurance Program Plan*,