

Los Alamos National Laboratory is operated by the University of California for the United States Department of Energy under contract W-7405-ENG-36

LA-UR--83-773

DE83 009992

TITLE CW SIDE-COUPLED LINAC FOR THE LOS ALAMOS - NBS RACETRACK MICROTRON

AUTHOR(S) L(oyd) M. Young and J(ames) M. Potter

SUBMITTED TO 1983 Particle Accelerator Conference,
March 21-23, Santa Fe, NM

DISCLAIMER

This report was prepared as an account of work sponsored by an agency of the United States Government. Neither the United States Government nor any agency thereof, nor any of their employees, makes any warranty, express or implied, or assumes any legal liability or responsibility for the accuracy, completeness, or usefulness of any information, apparatus, product, or process disclosed, or represents that its use would not infringe privately owned rights. Reference herein to any specific commercial product, process, or service by trade name, trademark, manufacturer, or otherwise does not necessarily constitute or imply its endorsement, recommendation, or favoring by the United States Government or any agency thereof. The views and opinions of authors expressed herein do not necessarily state or reflect those of the United States Government or any agency thereof.

By acceptance of this article, the publisher recognizes that the U.S. Government retains a nonexclusive, royalty-free license to publish or reproduce the published form of this contribution, or to allow others to do so, for U.S. Government purposes.

The Los Alamos National Laboratory requests that the publisher identify this article as work performed under the auspices of the U.S. Department of Energy.

Los Alamos Los Alamos National Laboratory
Los Alamos, New Mexico 87545

FORM NO 836 94
ST NO 2078 3/81

MASTER

STANDARD D. 1000 1000 1000 1000 1000

EX-10

CW SIDE-COUPLED LINAC FOR THE LOS ALAMOS/NBS RACETRACK MICROTRON*

L. M. Young and J. M. Potter, AT-1, MS H817
Los Alamos National Laboratory, Los Alamos, NM 87545

Summary

A 2.7-m side-coupled linac has been built as part of the 5-MeV injector for the cw room-temperature racetrack microtron (RTM) being constructed in collaboration with the National Bureau of Standards (NBS).¹ The linac is designed to accelerate the electron beam from 1 to 5 MeV with an accelerating gradient of 1.5 MeV/m. Fabrication of the structure started October 4, 1982 and was completed February 28, 1983, when it was tested with a cw power level of 82 kW. The structure has an effective shunt impedance (ZT^2) of 82.5 M Ω /m. No change in field distribution was detected at any power level. The operating frequency is 2380 MHz.

Introduction

Four different types of standing-wave, coupled-cavity rf linear accelerator structures have been investigated in a search for the best candidates for the RTM: disk-and-washer (DAW), annular-ring coupled structure (ACS), on-axis coupled structure (OCS), and side-coupled structure (SCS).² Our goal has been to develop a structure with five properties: (1) a high efficiency ($ZT^2 \geq 80$ M Ω /m) to reduce the rf power consumption; (2) an ability to support high accelerating fields (>1.5 MeV/m); (3) sufficient water cooling to permit 100% duty factor operation; (4) freedom from interfering modes that could cause beam breakup or could compromise structure efficiency; (5) enough coupling ($>10\%$) to ensure good stability with long assemblies of many cells to optimize match to rf amplifier size.

From our studies, we conclude that an advanced SCS structure with 5% coupling would meet objectives in items 1-4 but would not be optimum for the objective in item 5. However, 3% coupling is adequate for 4-m-long structures at 2380 MHz. Therefore, the RTM requirements can be met by using two 4-m structures to provide the 8 m of accelerating structure needed.

The recently completed 2.7-m section meets our design objectives. The shunt impedance is 82.5 M Ω /m, which satisfies Goal 1. After we conditioned the structure for 3 h, it accepted 82 kW of cw rf power, corresponding to a 1.54-MeV/m accelerating gradient. This power level was achieved with only 70% of the design water flow; thus, Goals 2 and 3 are satisfied. Goal 4 is satisfied because no interfering modes are found near the operating frequency f_0 . The lowest beam-blowup modes occur in a band between $3/2 f_0$ and $2 f_0$, which avoids ratios of small integers. Therefore, no serious problem is expected with these modes. Goal 5 is satisfied to the extent that the 2.7-m structure has a 0.04R coupling factor and is stable at least up to 30 kW/m. No power-induced field tilt was observed. Field distribution has an rms amplitude fluctuation about the mean of 2.1% and a $\pm 0.5\%$ field tilt. The stop band, which was preset to ± 400 kHz to avoid thermal runaway that is possible with a negative stop band, increased with power at a rate of 12 kHz/kW/m to a value of ± 770 kHz at 30 kW/m. Thus, there is no possibility of the stop band going negative at higher power levels. The frequency of the

accelerating mode drops at a rate of 21 kHz/kW/m with increasing power levels when water temperature remains constant. To maintain constant frequency, the water temperature must be reduced as power is increased.

The 2380-MHz Side-Coupled Structure

For the free-electron-laser/LAMPF cell geometry scaled to the RTM 2380-MHz frequency, the predicted ZT^2 , including losses from surface finish, is 70 M Ω /m. This is unacceptably low, both because of length constraints imposed by available space at NBS and because of klystron power limitations. A study of shunt impedance versus parameters made for LAMPF suggests that slight improvements to the shunt impedance could be made by decreasing the beam aperture and by sharpening the nose angle of the cavity (see Fig. 1).³ The desired beam aperture size is 1 cm, which is 78% of the scaled LAMPF beam hole. The nose angle was decreased from 30° to 10° . This decrease, together with the reduction in beam aperture, increased the theoretical shunt impedance by 18%, to 99 M Ω /m. The peak surface field is still well below the Kilpatrick limit. The actual measured shunt impedance in the 2.7-m structure for the RTM program is 82.5 ± 1 M Ω /m. The reduction from theoretical is due entirely to decreased Q because of surface-finish effects and redistribution of current by the coupling slots. The measured value of ZT^2/Q , which is independent of cavity Q , was within 1% of the SUPERFISH value, 5397 Ω /m.

The unloaded Q (Q_u) measurement for the almost completely brazed structure (only the drive cell was not brazed) yielded a 15 300 Q compared to the 18 340 SUPERFISH value. The loaded Q (Q_l) was measured after the iris was cut with a match of $\beta = 1.04$. Q_l is related to Q_u by the relation

$$Q_l = \frac{Q_u}{1 + \beta}$$

The Q measurements, made before and after the iris slot was cut, agreed within 1% using this relation. The measured values of Q and ZT^2/Q yield 82.5 M Ω /m for the shunt impedance, ZT^2 .

Using a least squares fit of the measured mode spectrum to the predicted mode spectrum, we calculated the derived parameters of the SCS, given in Table I, from the coupled-circuit model.⁴ The measured mode spectrum was obtained from the 2.7-m section consisting of 43 accelerating cells and 42 coupling cells.

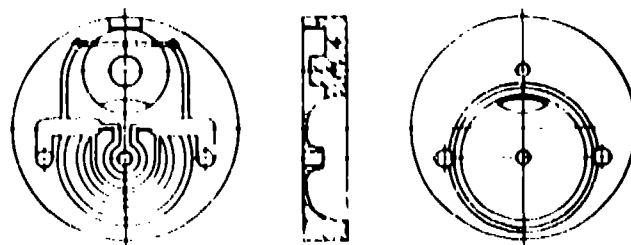


Fig. 1. Three views of the SCS half-cell.

*Work supported by US Department of Energy.

to apportion water flow to minimize temperature gradients. These designs are depicted in Fig. 1. These water passages are based on 2.56 gpm/cell and a velocity not in excess of 12 ft/s.

The machining-finish roughness for all inner contours has been set at 63-rms-microinch roughness, maximum. This finish is attainable with "off-the-shelf" carbide insert-type tools that normally are used for tracer lathe machining. Some surfaces were checked by profilometer and found to be in the 51- to 58-rms-microinch range. This seems to be the range of surface finish that can be expected of commercially ground tool inserts. Measurements on a single, brazed cell with no coupling slots, machined with this method, yielded a Q value of 17 800 at 2380 MHz, which is 95% of theoretical.

Accelerating and coupling half-cells are tuned in place on a lathe to within 300 kHz and 1 MHz, respectively, by machining to an accuracy of approximately ± 0.0003 in. The frequency to which the cells are tuned has been estimated to correct for the effects of vacuum and temperature on the assembled structure and the desired stop band. Final tuning of the accelerating cells after brazing is accomplished by deforming the cell walls slightly at access points provided by drilling the structure to reduce the wall thickness at four locations on each cell. The accelerating cell frequencies can be only raised; whereas, the coupling cells can be lowered by squeezing the gap or raised by spreading the gap with a wedge. For this reason, in the lathe the accelerating cells are tuned ~ 300 kHz lower than required. To obtain the desired operating frequency, the final tuning of the accelerating cells requires the cells only to be raised in frequency.

Coupling Iris

A short brazed section was used to determine the approximate size of the coupling iris required for a full-length accelerator section. The coupling factor B_2 , obtained when a structure has N_2 accelerating cells of $Q = Q_2$ when the coupling factor is B_1 for a geometrically identical structure of N_1 accelerating cells of $Q = Q_1$, is

$$B_2 = B_1 \frac{Q_2 N_1}{Q_1 N_2}$$

assuming the fields are uniformly distributed in each case.

The product $B_2 \cdot N_2$ for $Q_2 = 15\ 000$ is plotted in Fig. 3. The solid line represents data from the six-cell test cavity. The \circ represents the data obtained from cutting the iris on the preaccelerator. The iris was 13 mm wide on the six-cell test cavity, and the edges were left square; whereas, on the preaccelerator, the iris was 9.5 mm wide with all edges rounded off. The length of the slot has the predominant effect on the coupling. The slot width virtually has no effect. The fact that the edges were rounded on the preaccelerator coupling irises probably accounts for the slightly greater coupling than that observed with the test cavity.

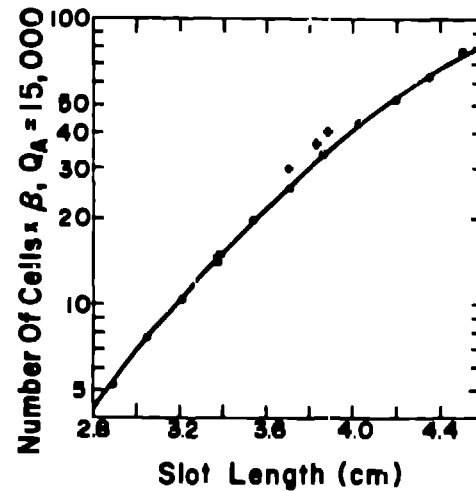


Fig. 3. Coupling factor versus iris slot length.

Acknowledgments

The authors would like to thank W. L. Clark, R. F. DePaula, and F. A. Martinez for the long hours of work machining and assembling the side-coupled structure so quickly. Also, we would like to thank L. C. Wilkerson, P. L. Roybal, D. J. Kennedy, P. B. Bradley, K. J. Lovell, and J. F. Martinez for their participation in either designing, drafting, or brazing of the structure. Finally, we would like to thank F. J. Humphry for help with the bead-pull measurements.

References

1. P. H. Debenham, S. Penner, R. L. Ayres, R. I. Cutler, E. R. Lindstrom, D. L. Mohr, J. I. Rose, M. A. D. Wilson, and N. R. Yoder; L. M. Young, E. R. Martin, A. Mitra, J. M. Potter, R. H. Stokes, P. J. Tallerico, and L. Wilkerson, "Progress on the NBS-LANL CW Microtron," IIII Trans. Nucl. Sci. 30, No. 2, to be published April 1983.
2. R. K. Cooper, Y. Iwashita, J. M. Potter, S. O. Schriber, D. A. Swenson, J. M. Watson, L. C. Wilkerson, and L. M. Young, "Radio-Frequency Structure Development for the Los Alamos/NBS Racetrack Microtron," Los Alamos National Laboratory document LA-UR-83-95 (January 1983).
3. "Quarterly Status Report on the Medium-Energy Physics Program for the Period Ending April 30, 1967," Los Alamos Scientific Laboratory report LA-3712-MS, p. 8 (May 1967).
4. E. A. Knapp, B. C. Knapp, and J. M. Potter, "Standing-Wave High Energy Linear Accelerator Structure," Rev. Sci. Instrum. 39, p. 979 (1968).