

LA-9330-MS

UC-70

Issued: August 1986

LA--9330-MS

DE87 000791

**Effects of Long-Term Exposure  
of Tuffs to High-Level  
Nuclear Waste Repository Conditions:  
Final Report**

J. D. Blacic  
D. T. Vaniman  
D. L. Bish  
C. J. Duffy  
R. C. Gooley

**MASTER**

**Los Alamos** Los Alamos National Laboratory  
Los Alamos, New Mexico 87545

DISTRIBUTION OF THIS DOCUMENT IS UNLIMITED

*EAB*

## CONTENTS

ABSTRACT . . . . .	1
I. INTRODUCTION . . . . .	1
II. PREVIOUS RESULTS . . . . .	2
A. Test Method . . . . .	2
B. Summary of Previous Results . . . . .	4
III. INVESTIGATION OF POSSIBLE PETROLOGIC AND MINERALOGIC CHANGES AT HIGH-LEVEL NUCLEAR WASTE REPOSITORY CONDITIONS . . . . .	5
A. Methods . . . . .	6
B. Results of Petrologic and Mineralogic Studies . . . . .	8
C. Summary of Observations . . . . .	16
IV. INVESTIGATION OF POSSIBLE MATRIX PERMEABILITY CHANGES . . . . .	18
A. Introduction . . . . .	18
B. Test Method . . . . .	19
C. Results . . . . .	19
D. Conclusions . . . . .	25
V. FINAL SUMMARY AND CONCLUSIONS . . . . .	25
ACKNOWLEDGMENTS . . . . .	27
REFERENCES . . . . .	27
APPENDIX: ELECTRON PROBE ANALYSES OF ZEOLITES AND CLAYS . . . . .	29

# EFFECTS OF LONG-TERM EXPOSURE OF TUFFS TO HIGH-LEVEL NUCLEAR WASTE REPOSITORY CONDITIONS: FINAL REPORT

by

J. D. Blacic, D. T. Vanniman, D. L. Bish, C. J. Duffy, and R. C. Gooley

## ABSTRACT

We have performed exploratory tests to investigate the effects of extended exposure of tuffs from Yucca Mountain, Nevada, to temperatures and pressures similar to those that will be encountered in a high-level nuclear waste repository. In a preliminary report we described statistically significant changes in strength properties and generally minor changes in porosity and grain density. In the present report we describe additional measurements that indicate possible changes in permeability (in one tuff type) after exposure for 2 to 6 months at temperatures from 80 to 180°C, confining pressures of 9.7 and 19.7 MPa, and water pore pressures of 0.5 and 19.7 MPa. Mineralogic examinations have established reactions involving dissolution of silica and feldspar minerals and possible conversion of clinoptilolite to mordenite. We conclude that rock properties important to the operation of a nuclear waste repository in tuff are likely to change over time when exposed to simulated repository conditions, and the details of these time-dependent processes should be investigated further.

---

## I. INTRODUCTION

The rock environment of a high-level nuclear waste repository will be subjected to elevated temperature and stress in the presence of water. These hot, wet conditions have the potential of causing irreversible changes in the thermomechanical properties of the host rock that are likely to occur only slowly over time: in effect, a low-grade metamorphism. The thermomechanical properties of the host rock are essential inputs to the design of a repository, and therefore, some estimate of how these properties may change as a result of the conditions induced by the waste heat source is needed. The structural and mineralogic changes that we suspect may occur are very complicated and ultimately may require more sophisticated investigations.

Nevertheless, it is advisable to carry out exploratory tests in order to focus more detailed studies at a later stage.

The evaluation of tuff as a repository host rock is being performed by the Nevada Nuclear Waste Storage Investigations (NNWSI) and is managed by the US Department of Energy's Nevada Operations Office. The tuffs specifically under study are those of Yucca Mountain, located near the southwestern edge of the Nevada Test Site (NTS) in Nye County, south-central Nevada. Yucca Mountain is one of several sites in the country being considered for the development of a mined repository to store high-level radioactive waste. Descriptions of this site and of the drill cores discussed in this report can be found in Blacic et al.,<sup>1</sup> Spengler et al.,<sup>2</sup> Bish et al.,<sup>3</sup> and Caporuscio et al.<sup>4</sup>

## II. PREVIOUS RESULTS

We designed an experiment to test a large number of samples at one time by an extended exposure to conditions expected near a waste repository. Preliminary results of these experiments were summarized by Blacic et al.<sup>1</sup> The individual tests were designed to cover a range of temperature and pressure conditions simulating varying distances from the waste canister. Because the properties of tuffs vary substantially with lithology, a range of tuff "types" covering varying degrees of welding and postdeposition mineralization were chosen. The types chosen represent two major tuff mineralogies. Devitrified tuff (tuff formed mostly of feldspar and silica minerals) is represented mostly by samples from the Topopah Spring Member of the Paintbrush Tuff but also by samples from the Bullfrog and Tram Members of the Crater Flat Tuff, with the Tram Member containing minor amounts of zeolite as well as the devitrification minerals. Zeolitized tuff is represented by the clinoptilolite-mordenite tuff of Calico Hills.

### A. Test Method

Details of the test method are given in the preliminary report.<sup>1</sup> A brief description follows. Samples were 2.54-cm-diam by 6.5-cm-long cylinders taken from core holes UE-25a#1 and USW G-1 from Yucca Mountain at the Nevada Test Site. Samples were taken from the four stratigraphic units mentioned above: (1) Topopah Spring Member of the Paintbrush Tuff in drill hole UE-25a#1; (2) tuffaceous beds of Calico Hills in drill hole UE-25a#1; (3) Bullfrog Member of the Crater Flat Tuff in drill hole USW G-1; and (4) Tram Member of the Crater Flat Tuff in drill hole USW G-1. See Refs. 2 and 3 for a description of the

general lithology and mineralogy/petrology of these units. Control samples came from the same piece of core as the test sample, in most cases cut side-by-side. Each test sample was contained in an individual pressure vessel and subjected to the following range of conditions: temperature, 80-180°C; confining pressure, 9.7-19.7 MPa; water pore pressure, 0.5-19.7 MPa; duration, 2-6 months. Table I, reproduced from the preliminary report,<sup>1</sup> gives the combinations of test variables used for each sample.

The test times of 2-6 months were selected arbitrarily as being hopefully long enough to establish some of the sluggish mineralogic reactions that we anticipated might occur. In retrospect, as will be made clear below, some reactions for which we only obtained the barest indications will undoubtedly be more extensive at extended times. Also, there is no guarantee, of course, that properties that did not change in these tests will not at later times. This problem is discussed in the summary.

As noted above, the procedure was to measure a range of thermomechanical properties in control samples and then to measure the same properties in the samples exposed to the test conditions. These are designated as "before" and "after" measurements. All properties were measured at ambient conditions (room temperature and pressure). This procedure was dictated by the philosophy of the test, namely to look for irreversible changes in key properties. However, as a result, these measurements should not be considered as substitutes for measurements at higher temperature and pressure conditions required for engineering data. More detailed measurements at test conditions are required for this. In the preliminary report<sup>1</sup> we give the results for tensile

TABLE I  
KEY TO TEST CONDITIONS

Test #	Temperature (°C)	Confining Pressure (MPa)	Pore Pressure (MPa)	Duration (mo)
1	80	19.7	5.0	6
2	80	9.7	0.5	6
3	120	19.7	19.7	5.5
4	120	9.7	0.5	5.5
5	120	19.7	19.7	2.5
6	120	9.7	9.7	2.5
7	180	9.7	9.7	3.5
8	180	9.7	9.7	3.5
9	120	19.7	19.7	2
10	120	9.7	9.7	2

strength, uniaxial compressive strength, grain density, and porosity. These results are summarized in Section II.B. In the present report we detail the results for permeability, mineralogic, and petrologic changes.

#### B. Summary of Previous Results

The previous results are summarized below in terms of the individual rock units. A problem inherent in the evaluation of the properties of tuffs is sample inhomogeneity. We tried to reduce this problem by taking samples for "before" and "after" comparisons side-by-side from the same section of core in the belief that this would compensate for the large vertical variations in properties that are apparent from the measurements. However, for the relatively small samples used in this study, local inhomogeneities (for example, small lithic or pumice fragments) can affect the validity of any apparent changes. Ideally, a large number of repeat measurements are desirable. An attempt to do this in the preliminary report was carried out by using a t-significance test. But in view of the small number of repeat measurements, the conclusions are, to a degree, subjective.

Topopah Spring Member: After exposure to the range of conditions used, tensile strength decreased up to 45% and uniaxial compressive strength decreased up to 25%. Porosity increased up to 20% after exposure at 80°C but decreased up to 25% after exposure to higher temperatures. Grain densities remained virtually unchanged.

Calico Hills Unit: After exposure to the range of conditions used, tensile strength increased up to 16% and uniaxial compressive strength decreased up to 25%. Both porosity and grain density increased up to 20%.

Bullfrog Member: Tensile strength decreased slightly after exposure at 120°C and increased slightly after exposure to 180°C. Uniaxial compressive strength decreased up to 17% after 120°C exposure but unexpectedly increased up to 31% in samples exposed to 180°C. Porosity increased slightly after 120°C but decreased slightly after 180°C. Grain densities were unchanged.

Tram Member: Tensile strength decreased up to 30% after exposure at 120°C but instead increased up to 36% after 180°C exposure. Uniaxial compressive strength changes were similar to those observed for Bullfrog tuff but were judged to be statistically inconclusive. Porosity decreased slightly and grain densities were unchanged.

The overall conclusion reached in the preliminary report was that there appear to be large and statistically significant (i.e., nonrandom according to

the t test) changes in tensile and uniaxial compressive strength after extended exposure to temperature and pressure conditions possible in the near-field region of a repository. With the exception of the Calico Hills tuff, porosities and grain densities were essentially unaffected. There appears, however, to be a qualitative change in behavior at 120°C. In several instances the sign of the observed changes after exposure at or below 120°C was reversed after exposure at 180°C. We speculate that this may reflect some as yet unidentified change in the mechanisms responsible for the changes. It must be noted that all tests described here were performed at sufficiently high fluid pressures to maintain pore fluids in the liquid state. Since local boiling may occur in the near field even above the water table where tuffs at Yucca Mountain are 80% saturated or greater, these tests are conservative in the sense that near-field dehydration effects are not considered.

### III. INVESTIGATION OF POSSIBLE PETROLOGIC AND MINERALOGIC CHANGES AT HIGH-LEVEL NUCLEAR WASTE REPOSITORY CONDITIONS

Petrologic and mineralogic studies of samples exposed to simulated high-level nuclear waste repository conditions may help to explain the changes in bulk mechanical properties noted in the preliminary report. In many cases the mechanical test results indicate a statistically significant change in properties in side-by-side samples, even though there is no apparent change in sample mineralogy or visible grain-boundary relations. The abundance of such cases suggests that the causative changes are either too subtle or too localized to be observed by the methods utilized in this study. Subtlety of change is not unlikely in experiments run at low temperatures over periods of a few months since, under such conditions, the changes in mechanical properties may be due to modification of the surface properties of mineral grains, rather than to gross dissolution and/or recrystallization. In the silicic tuffs studied here, grains affected occur in a vast matrix of submicron-sized crystals, difficult to investigate by microscope or even by electron microbeam techniques.

The possibility of localized changes presents a different problem. Tuff is a complex rock type, composed of pyroclastic particles of widely varying grain size and composition. In the tuffs of interest here, these particles include pumice fragments that range up to 2 to 3 cm in diameter. Pumice fragments this large could be an obvious problem in test samples that are 2.5

cm in diameter and 6.5 cm long. As mentioned previously, one well-placed pumice or lithic fragment could greatly alter the physical properties of a small tuff sample. Localized fractures or lithophysal cavities may lead to similar problems. These problems have been considered and handled by the t-test methods described earlier.<sup>1</sup> Extensive statistical testing, however, was not possible and the after-test occurrence of means for physical properties outside the 90% t-test probability limits cannot be ruled out.

Some differences in strength between major tuff units before hydrothermal exposure are explained by differences in welding. For example, the densely welded Topopah Spring unit has tensile and compressive strengths that are roughly 900% and 500% greater, respectively, than the tensile and compressive strengths of the poorly welded Bullfrog unit.<sup>1</sup> Differences in mechanical properties between units may also be related to secondary mineralization. For example, the zeolitized Calico Hills unit has compressive and tensile strengths that are roughly 100% greater than in the Bullfrog unit, even though both units are poorly welded to non-welded. On a finer scale, differences in mechanical properties within a single tuff unit can be related to groundmass textures. The Tram unit at 2944.6 to 2945.0 ft has a tensile strength 300% greater and a compressive strength 100% greater than the same rock at 2772.7 to 2773.3 ft.<sup>1</sup> The rocks at both depths are partially welded and have similar mineralogy and pumice content. The difference between the samples from these two depths apparently results from the relations between groundmass crystals. The relatively weak sample at 2772.7 to 2773.3 ft has veinlets of fine-grained (<5  $\mu\text{m}$ ) polygonal polycrystalline quartz throughout the groundmass (Fig. 1a). In the stronger sample at 2944.6 to 2945.0 ft, veinlets of the same scale contain fewer and coarser quartz grains that are intergrown with spherulitic structures in the groundmass (Fig. 1b). The tightly interlocked structure of the second sample is apparently stronger than the rounded grain facings of the first sample. Petrographic observations can potentially explain property differences, such as these, that vary by 100% or more. The results of our examinations of the test samples, however, suggest that petrologic changes leading to 30 to 70% differences in sample strength may not require fabric modifications that can be observed petrographically.

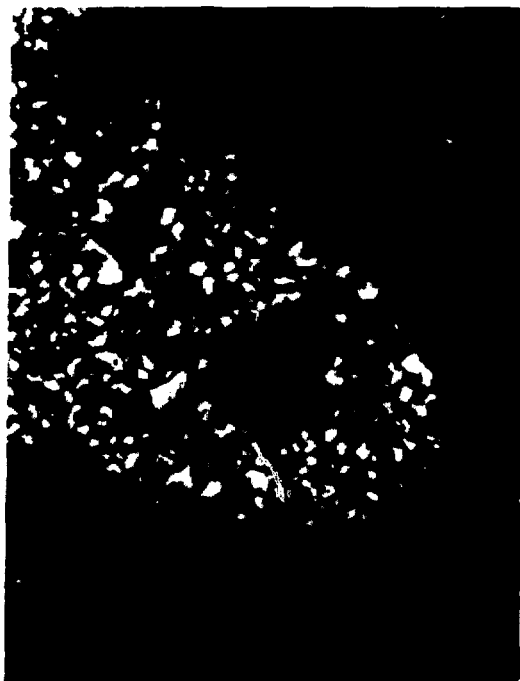
#### A. Methods

Seven samples showing significant changes in mechanical properties were studied by optical petrographic, x-ray diffraction, electron microbeam, or





a



b



Fig. 1.

A comparison of the fine-grained polygonal texture of groundmass quartz in the Tram unit at 2773-ft depth (a) and coarse intergrowths of groundmass quartz in the Tram unit at 2945-ft depth (b). All photographs are 1 by 1.5 mm, taken with crossed polarizers. Note in particular the strengthening intergrowth of fine-grained acicular groundmass crystals within coarse single quartz crystals at 2945-ft depth (b). Both pictures are of samples before testing.

scanning electron microscopy methods. Seven before-test samples and eight of the after-test samples (total fifteen) were studied. X-ray diffraction studies were made by taking splits of six before- and six after-test samples and grinding them to ~50-100 mesh (0.15 to 0.3 mm). A portion of this powder was then ground under acetone to ~300 mesh (50  $\mu$ m). The ground powder was analyzed on a Siemens D-5000 powder diffractometer using a copper-target x-ray tube and a diffracted-beam monochromator. The diffractometer was run between 2° and 32° 2 $\theta$  at a scanning rate of 2° 2 $\theta$  per minute. Examples of x-ray diffraction patterns are shown in Fig. 2. Mineral identification was accomplished by comparison of observed patterns to standards from the Joint Committee on Powder Diffraction Standards (JCPDS). Estimation of concentrations of the various minerals present was accomplished through comparison to in-lab standard patterns of known mixtures. Further details of x-ray diffraction methods can be found in Refs. 3 and 4. The results of x-ray diffraction analysis are summarized in Table 11.

Electron microprobe analyses of clays and zeolites were made on an automated Cameca model MBX electron microprobe with accelerating potential fixed at 15 keV and sample current at 0.015  $\mu$ A on thorium oxide. Analyses were made for either 10 s or 30 000 counts for each element. In the Appendix, data are listed in Table A-1 for before-test and after-test zeolites in the sample from the Calico Hills unit and in Table A-11 for after-test clays in the sample from the Bullfrog Member.

Imaging and qualitative composition studies were made on an ISI model DS-130 scanning electron microscope, operated at variable keV (up to 40 keV). Semiquantitative and qualitative analyses from primary x-ray signals were obtained on a Kevex model 7000 energy-dispersive system with the electron beam operating at 15 keV. Back-scattered and secondary-electron images are described in this report.

## B. Results of Petrologic and Mineralogic Studies

1. Topopah Spring Member of the Paintbrush Tuff. Samples from 1089.7 to 1090.3 ft, from 1100.6 to 1101.6 ft, and from 1105.8 to 1106.8 ft tested at 120°C (5.5 months), 180°C (3.5 months), and 80°C (6 months) (tests #3, #7, and #1, Table 1, respectively).

These three samples from the Topopah Spring unit are all from drill hole UE-25a#1 within the 997- to 1199-ft densely welded devitrified subunit as described for USW G-1 by Spengler et al.<sup>2</sup> All samples are phenocryst poor

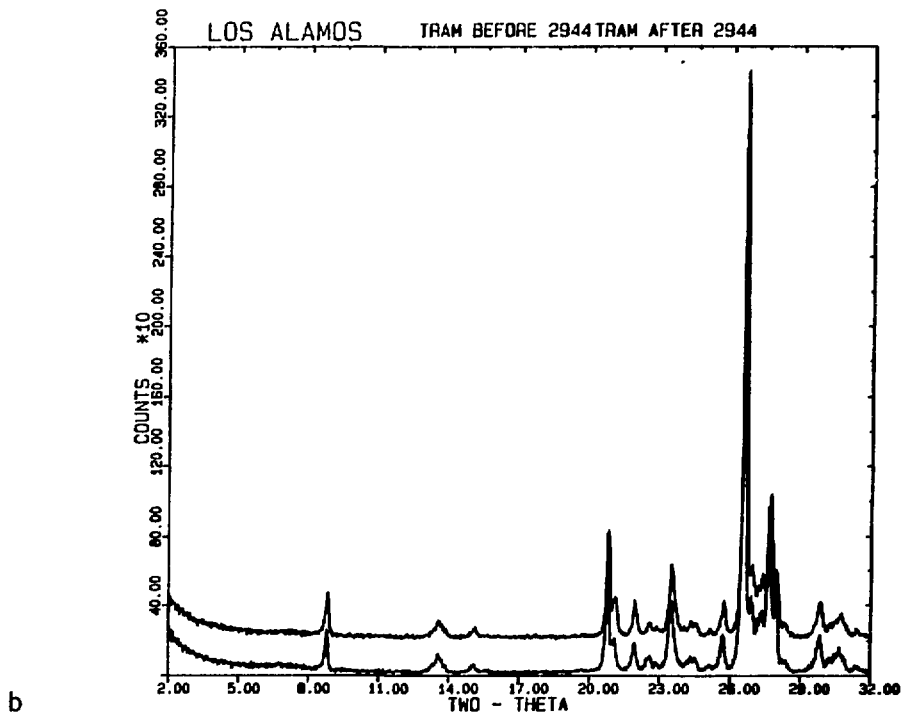
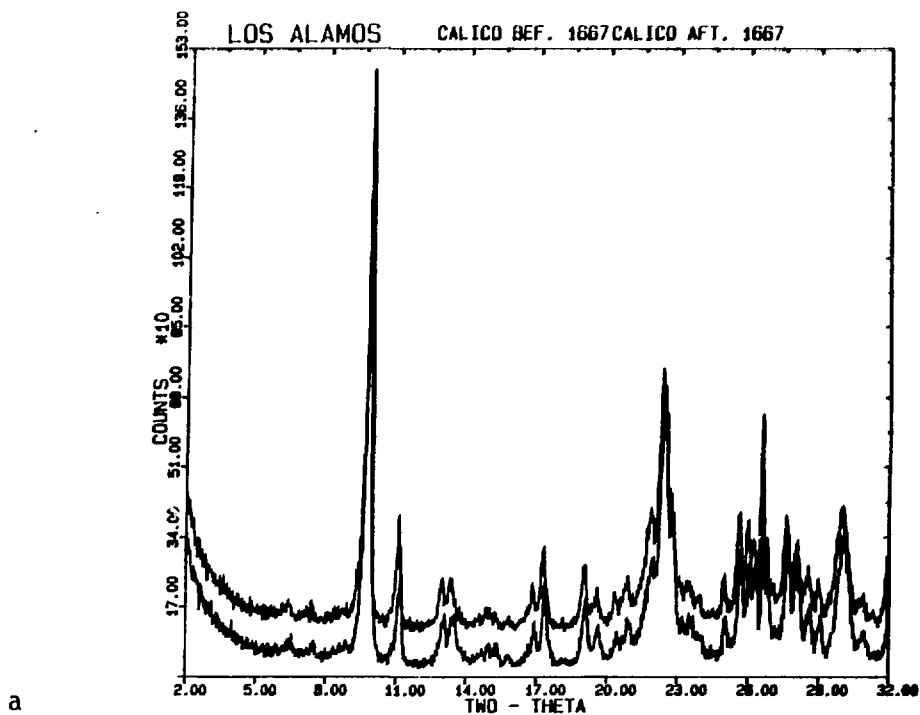


Fig. 2.

(a) X-ray diffraction patterns of Calico Unit (1667-ft depth) before (lower pattern) and after (upper pattern) treatment at 120°C for 2.5 months. (b) Tram unit (2944-ft depth) before (lower pattern) and after (upper pattern) treatment at 180°C for 3.5 months.

TABLE II

## RESULTS OF X-RAY DIFFRACTION STUDIES OF SOAK TEST SAMPLES

Sample (Depth in ft)	Mineralogy	Temp (°C)	Observed Change <sup>a</sup>				
			2 <sup>b</sup>	2.5	3.5	5	6
Topopah Springs							
(1090) <sup>i</sup>	alkali feldspar, mica, quartz, cristobalite	120		n.c.		n.c.	
(1101)	alkali feldspar, mica, quartz, cristobalite	180			n.c.		
(1106)	alkali feldspar, mica, quartz, cristobalite	80					n.c.
Calico Hills							
(1668)	clinoptilolite, mordenite, cristobalite, quartz	120		mordenite			
Bullfrog <sup>c</sup>							
(2381)	alkali feldspar, quartz, smectite, mica	180			feldspar mica		
Tram							
(2773)	alkali feldspar, quartz, mica, cristobalite, clinoptilolite	120	feldspar SMECTITE				

<sup>a</sup>Symbol n.c. stands for no observable change in x-ray diffraction pattern.  
Lower case mineral names indicate relative decrease of that mineral abundance; upper case mineral name indicates relative increase in that mineral abundance.

<sup>b</sup>Duration of experiment in months.

<sup>c</sup>This sample alone was run in well J-13 water; all others in pure water.

(~1%) with plagioclase dominant. Listed in order of decreasing relative abundance, the phenocrysts in the 1089.7- to 1090.3-ft sample are plagioclase-sanidine-biotite, those in the 1100.6- to 1101.6-ft sample are plagioclase-sanidine-quartz, and those in the 1105.8- to 1106.8-ft sample are plagioclase-quartz-sanidine-magnetite. The small amount of phenocrysts in all of these samples and the lack of any notable changes in phenocryst composition, morphology, or Fe-Ti oxides suggest that any modifications of the phenocrysts in these tests have trivial effects on mechanical properties.

The groundmass textures in all three samples are largely the product of dense welding followed by devitrification. Pumices are flattened and well

foliated, and the groundmass is dominated by subequant granular intergrowths of quartz (and/or cristobalite) and feldspar with minor clay, all commonly with grain sizes  $<5\text{ }\mu\text{m}$ . Veinlets of granular quartz are common throughout all three samples.

X-ray diffraction studies indicate no discernible differences between any of the three before-test and after-test paired samples from the Topopah Spring unit. Petrographic study reveals no visible differences in grain population or morphology, and this conclusion is reinforced by the comparable lack of any notable changes as a result of scanning electron microscope studies. The only possible mineralogical modification noted by optical microscope studies occurs in the sample at 1105.8 to 1106.8 ft, which was held at the lowest temperature ( $80^{\circ}\text{C}$ ) for the longest time (6 months). Pumices in this after-test sample appear to have lost some silica, probably by dissolution. Dissolution of quartz may correlate with the observed slight porosity increase (1%).

The other two samples analyzed from the Topopah Spring Member had significant increase in compressive strength (69%) at  $120^{\circ}\text{C}$  for 5.5 months (1089.7 to 1090.3 ft) and decreases in both compressive strength (14%) and tensile strength (46%) after 3.5 months at  $180^{\circ}\text{C}$  (1100.6 to 1101.6 ft). These opposed differences cannot be correlated with any observable change in mineral type, form, abundance, or fabric. Highly variable results such as this suggest either that grain-boundary transformations are taking place on a very fine scale, possibly due to variations in solution and redeposition of silica at various temperatures, or that the results are complicated by sample heterogeneity. Heterogeneity in mechanical properties may be an important aspect of the Topopah Spring samples, where lithophysae may form 15% or more of the rock.<sup>2</sup> The samples chosen for testing were selected to avoid lithophysae, but it is difficult to recognize the diffuse textural boundaries of the larger lithophysae and it is not always possible to avoid smaller and more widely dispersed lithophysae-like vapor crystallization features. Small pockets of vapor-phase crystallization can be seen in some of the pumices from the sample at 1105.8 to 1106.8 ft.

2. Tuff of Calico Hills. Sample from 1667.3 to 1668.4 ft tested at  $120^{\circ}\text{C}$  (2.5 months) and  $180^{\circ}\text{C}$  (3.5 months) (tests #5 and #7, respectively, Table I).

Samples from the zeolitized tuff of Calico Hills show a significant increase in tensile strength (22%) and slight porosity and grain-density

increases (5 to 19%) when held at 120°C for 2.5 months. There were only slight changes at 180°C (statistically insignificant). These samples were analyzed petrographically and by x-ray diffraction because the Calico Hills unit is highly zeolitized in holes UE-25a#1 and USW G-1, and the sorptive properties of zeolites are important to any potential repository at Yucca Mountain. The part of the Calico Hills unit tested consists largely of nonwelded phenocryst-poor ash-flow tuff and thin intervening bedded/reworked zones.<sup>2</sup> The nonwelded ash flows contain abundant small pumice fragments (0.5 to 1 cm) and rare large pumices (~3 cm). The samples tested contain less than 2% phenocrysts, which are, in decreasing order of abundance, plagioclase-quartz-sanidine-biotite. The groundmass texture of the ash-flow tuffs in the Calico Hills is dominated by interlocking zeolite, silica and K-feldspar growth, commonly to the exclusion of clay.<sup>3</sup> Poorly connected cavities in pumice fragments may be lined by euhedral clinoptilolite and K-feldspar or (less commonly) by both clinoptilolite and opal.

We have attempted to determine whether the clinoptilolite crystals are destabilized by hydrothermal exposure at temperatures of 120 and 180°C, and whether these zeolites undergo any significant change in cation composition at those temperatures. The Calico Hills samples studied also contain abundant mordenite which occurs as small fibrous crystals less than 1  $\mu$ m in diameter. Such small crystals cannot be analyzed by electron microprobe for evidence of change in cation composition. Electron microprobe studies indicate that no significant compositional change has occurred in the clinoptilolites subjected to temperatures of 120 or 180°C. Table A-I lists 12 before-test zeolite analyses, 25 after-test zeolite analyses for 120°C/2.5-month conditions (16 analyses from the center of the after-test sample and 9 analyses from the exposed sample rim), and 13 after-test zeolite analyses for 180°C/3.5-month conditions. The test results are summarized in Table III and in Fig. 3. Table III shows the mean  $\text{SiO}_2$ ,  $\text{Al}_2\text{O}_3$ ,  $\text{CaO}$ ,  $\text{Na}_2\text{O}$  and  $\text{K}_2\text{O}$  values (as well as the mean normalized Ca-Na-K cation composition) for all before-test and after-test conditions, as well as the ( $1\sigma$ ) standard deviation for each listing. Figure 3 compares the before-test normalized Ca-Na-K compositions of zeolites with compositions after the tests. The before-test sample (Fig. 3a) includes the average composition (small open circle) as well as the  $2\sigma$  area (circled) within which 98% of the analyses within this particular sample are expected to fall. The means of all after-test analyses fall well within the  $2\sigma$  circle for

TABLE III  
COMPARISONS OF AVERAGE CALICO CLINOPTILOLITE COMPOSITIONS  
BEFORE AND AFTER TESTING<sup>a</sup>

	Calico Before	After Test #5: Calico at 120°C <sup>a</sup>		Calico at 180°C <sup>a</sup>
		Center	Rim	
SiO <sub>2</sub>	65.0 ± 2.7	67.3 ± 1.9	67.1 ± 2.1	65.2 ± 2.9
Al <sub>2</sub> O <sub>3</sub>	11.6 ± 0.5	11.8 ± 0.5	11.8 ± 0.4	11.8 ± 0.7
CaO	3.58 ± 0.19	3.79 ± 0.36	3.60 ± 0.25	3.65 ± 0.34
Na <sub>2</sub> O	0.77 ± 0.15	0.68 ± 0.22	0.88 ± 0.15	0.79 ± 0.23
K <sub>2</sub> O	2.55 ± 0.42	2.31 ± 0.39	2.20 ± 0.30	2.40 ± 0.40
Ca	44 ± 4	49 ± 7	46 ± 4	46 ± 4
Na	17 ± 3	16 ± 4	20 ± 2	18 ± 4
K	38 ± 4	35 ± 4	33 ± 3	36 ± 2

<sup>a</sup>All data, both "before" and "after" test, are from zeolitized samples from the 1667.3 - 1668.4-ft depth of drill core UE-25a#1.

the before-test sample (Fig. 3b, c). Although individual data points in some of the after-test samples fall outside of the before-test 2σ area, we interpret those variations as sample-to-sample heterogeneity rather than test-induced cation exchange. We base this interpretation on the fact that there is no systematic shift between the compositions of zeolites exposed at 120°C and those exposed at 180°C and on the assumption that, although the zeolites in all samples fall near a common compositional range, they are not necessarily at equilibrium. There are large local variations in minor element content (particularly barium, see Table A-I) of clinoptilolite in the tuff of Calico Hills. The average after-test zeolite compositions are all slightly more calcium-rich than the average before-test zeolite composition, but it is not known whether this shift may become significant if the test conditions were prolonged.

3. Bullfrog Member of the Crater Flat Tuff. Sample from 2380.6 to 2381.2 ft tested at 180°C (3.5 months) (test #8, Table I).

This sample had significant increases in tensile strength (14%) and compressive strength (31%) after testing. The sample is of slightly welded tuff with some vapor-phase crystallization. Phenocrysts are abundant (12%) and include plagioclase-sanidine-quartz-biotite-magnetite in order of decreasing abundance. Pumices are generally less than 1 cm long and poorly flattened, and scattered silicic volcanic fragments are ~0.5 cm in diameter.

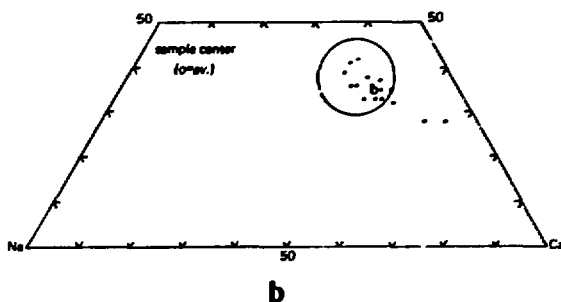
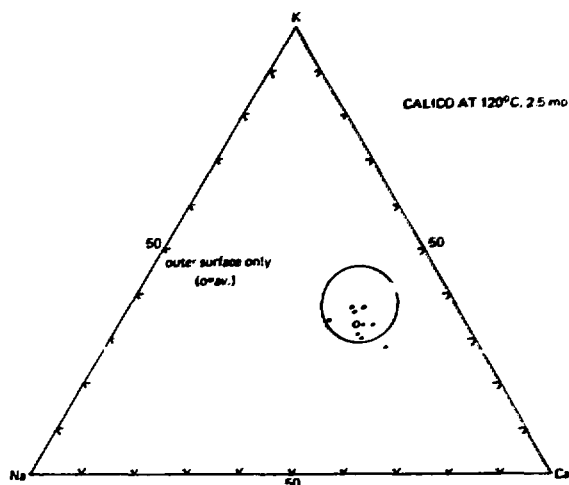
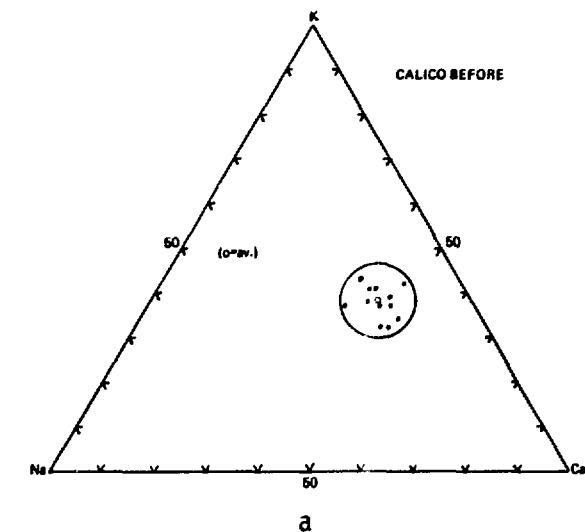


Fig. 3.

Clinoptilolite compositions in the Calico Unit before testing (a), along the exposed outer surface and with a core tested at 120°C for 2.5 months (b), and from a core tested at 180°C for 3.5 months (c). The average clinoptilolite composition for each figure is shown as a small open circle. In none of the tests do the average compositions fall outside the large open circle that represents the 2σ area of expected variation in clinoptilolite compositions before testing.



The before-test sample contains dark opaque veins of amorphous manganese oxides or hydrates with small amounts of BaO (3% weight) and FeO (3% weight). These manganese-rich vein fillings are not found in the after-test samples. Groundmass textures are dominated by quartz and feldspar intergrowths with abundant, very fine-grained birefringent clay.

X-ray diffraction analysis indicates no significant change in mineral type or abundance between the before-test and after-test samples. Petrographic observation, however, shows that the manganese-rich veins are not present in the after-test samples and the clays appear to be coarser in the after-test samples. Clay crystals in the before-test samples are far too fine-grained ( $<2\text{ }\mu\text{m}$ ) to analyze by electron microprobe, but the clay crystals in the after-test sample are as much as 20 to 30  $\mu\text{m}$  long and are large enough to analyze (Table A-II). These clays are Na-Ca-saturated expandable smectites. The coarsening of clay crystals at 180°C with intergrowth around groundmass quartz and feldspar may account for the increased strength of the after-test samples. Clay growth may also account for the slight porosity decrease in the after-test sample.

4. Tram Member of the Crater Flat Tuff. Samples from 2772.7 to 2773.3 ft and from 2944.6 to 2945.0 ft tested at 120°C (2 months) and 180°C (3.5 months) (tests #10 and #8, Table I) respectively.

These samples are both from a single subunit of the Tram Member in hole USW G-1, which extends from 2639 to 3083 ft.<sup>2</sup> This subunit is partially welded and devitrified to a groundmass of quartz, feldspar, and clay intergrowths with small (5 mm) veins of quartz. These veins of quartz were described above (Fig. 1a,b) to explain the great variability in strength within the Tram unit: coarsely crystalline quartz veins interlock with adjacent spherulitic structures, whereas fine-grained polygonal quartz without crystal intergrowths provides a weaker matrix. These samples are otherwise similar in composition, and rare zeolites ( $<3\%$ ) occur in voids in both samples. Both the sample from 2772.7 to 2773.3 ft and the sample from 2944.6 to 2945.0 ft are phenocryst rich (10 to 13% phenocrysts) and both have plagioclase-sanidine-biotite phenocrysts (in decreasing order of abundance), although the sample from 2944.6 to 2945.0 ft has about 2% quartz phenocrysts as well. Pumice fragments and fragments of siliceous volcanic rocks, slightly less than 1 cm in diameter, are common to both samples. The most notable

difference between samples is the differing grain size within their small quartz veins, a feature that was not affected by the test procedures.

Scanning electron microscope images indicate that the clinoptilolite grains projecting into vugs may undergo some surface modification at 120°C. The well-developed euhedral clinoptilolite forms that occur in the before-test samples (Fig. 4a) are degraded in the after-test samples at 120°C (Fig. 4b). Moreover, mordenite fibers seem to be coarser and better formed in the after-test samples (120 and 180°C) than in the before-test samples. X-ray diffraction studies, however, suggest no significant decrease in clinoptilolite abundance and no significant increase in mordenite abundance (Table I). This conclusion is corroborated by petrographic observations that show no decrease in the abundance of clinoptilolite crystals, even though their exterior surfaces may be slightly modified. The growth of mordenite in cavities under hydrothermal conditions does seem to be well documented by the scanning electron microscope analysis, but the quantities formed are so small (<<1%) that no changes other than those attributable to sample heterogeneity can be seen in the x-ray diffraction analysis (Fig. 2b). Nevertheless, definite mineralogic changes are evident in the after-test samples, and such changes in zeolitized tuff held at these or even lower temperatures for many years may be very important to the repository environment.

The Tram samples treated at 120°C for 2 months and at 180°C for 3.5 months both experienced a decrease in porosity of 8 to 9%. The one sample held at 120°C for 2 months showed a significant decrease in tensile strength (30%) and a marginally significant decrease in compressive strength (25%). The sample held at 180°C/3.5 months showed no statistically significant change in strength. No petrographic evidence was found to explain the decreased porosity. It is important to note that x-ray diffraction study indicates a possibly significant decrease in feldspar content and an increase of smectite clay content in the after-test sample that was held for 2 months at a temperature of 120°C. Petrographic examination shows a slight increase in intergranular clay, although it is very fine-grained and cannot be analyzed by electron microprobe. These changes may explain the reduction in strength.

### C. Summary of Observations

Petrographic, electron microprobe, x-ray diffraction, and scanning electron microscope studies of samples from seven depth levels in UE-25a#1 and USW G-1 cores reveal only three mineralogic changes that may be correlated



a



b

Fig. 4.

Euhedral clinoptilolite crystals in the Tram unit at 2772.7- to 2773.3-ft depth (a), contrasted with degraded clinoptilolite grains that occur in the sample after testing at 120°C for two months (b). Note that (b) was photographed at a scale 25% larger than (a).

with changes in mechanical properties due to elevated temperatures. All of these changes could occur in each of the units, but we have only been able to demonstrate them in specific samples summarized below. One sample from the Topopah Spring unit exposed at 80°C for 6 months had an increase in porosity that may be correlated to dissolution of silica, and a sample from the Bullfrog unit exposed at 180°C for 3.5 months had significant increases in tensile and compressive strength that may be correlated with a coarsening of clay crystals. One sample from the Tram unit exposed at 120°C for 2 months had a loss of feldspar and an increase in fine-grained clay content that might correlate with a slight decrease in tensile strength.

Hydrothermal exposures at 120 and 180°C lead to a slight degradation of surface morphology in euhedral clinoptilolite crystals and suggest a recrystallization of fibrous mordenite crystals in void spaces. The loss or gain of either mordenite or clinoptilolite was not great enough to be observed in x-ray diffraction studies, but the morphological changes observed suggest that loss of clinoptilolite and increase in mordenite may be the consequence of more prolonged exposure. No significant cation exchange was observed in clinoptilolite at either 120°C or at 180°C.

Changes in mechanical properties that do not correlate with observed petrologic and mineralogic changes may be due to small-scale grain-boundary changes or may simply reflect the complex heterogeneities in tuff. Pumice fragments, lithic fragments, fractures, and lithophysae are large discontinuous features that may introduce highly variable mechanical behavior in test samples that are limited to 2.5-cm diameter. Petrographic observations to date are more useful in explaining major differences in mechanical properties between and within units, as in the explanation of variable strength within the Tram unit as due to the grain size and morphologies of quartz veinlet and groundmass intergrowths.

#### IV. INVESTIGATION OF POSSIBLE MATRIX PERMEABILITY CHANGES

##### A. Introduction

The dominant means of migration of hazardous material associated with a high-level nuclear waste repository will be due to transport in groundwater. Therefore, it is very important to know the hydraulic properties of the host rock mass. Part of the flow will likely be along discontinuities such as fractures and joints, with a variable amount of transport through the porous

matrix, especially in the unsaturated zone. It is conceivable that in the thermal and stress field of a repository, mineralogic changes such as dissolution and redeposition could alter the flow channels to such an extent as to grossly change the local hydraulic properties. Any such changes would develop slowly over time; therefore, we made a few preliminary matrix permeability measurements on selected samples before and after extended temperature and pressure exposure to evaluate this possibility.

## B. Test Method

All tests were conducted at room temperature (about 20°C) on saturated samples. Both permeability and storage capacity were determined at values of effective confining pressure (confining pressure minus pore pressure) between 0.5 and 30 MPa. Storage capacity is the additional volume of fluid that can be stored in a unit volume of rock by a unit increase in the pore fluid pressure. Connected porosity was also determined from the dry and wet weights of the samples. Because there was some doubt that all the pore volume was filled with water, average mineral densities were also calculated. They agree quite well with those expected from the mineralogies of the rocks.

A detailed discussion of the method is given in Appendix F of the preliminary report.<sup>1</sup> In brief, the method involves applying a pore pressure pulse across the sample and observing the exponential decay of the pressure difference as water flows into the sample. The permeability and storage capacity were calculated using the method presented by Hsieh et al.<sup>5</sup>

## C. Results

Tables IV and V list the results for the two rock units tested.

1. Topopah Spring Member. Sample from 1087.3-1087.8 ft tested at 120°C, 19.7-MPa confining pressure, and 19.7-MPa pore pressure (2.5 months) (test #5, Table I). Sample from 1100.6-1101.6 ft tested at 120°C, 9.7-MPa confining pressure, and 0.5-MPa pore pressure (5.5 months) (test #4, Table I).

There is a large (~22%) increase in matrix permeability for both side-by-side samples after exposure. Whether these differences are a reflection of original sample inhomogeneity or result from the exposure conditions of the tests cannot be determined without further testing. There is also a significant difference in storage capacity of the before and after samples of 1100.6 to 1101.6 ft.

2. Calico Hills Unit. Sample from 1370.8 to 1371.4 ft, 120°C, 9.7-MPa confining pressure, 0.5-MPa pore pressure (5.5 months) (test #4, Table I).

TABLE IV  
HYDRAULIC PROPERTIES OF TOPOPAH SPRING TUFF

- A. Sample Number: 1087.3 to 1087.8 Before.  
 Length: 2.375 cm  
 Volume: 12.03 cm<sup>3</sup>  
 Wet weight: 28.568 g    Dry weight: 27.221 g  
 Porosity: 11.2%  
 Average Mineral Density: 2.55 g/cm<sup>3</sup>

Effective Confining Pressure (MPa)	Permeability (m <sup>2</sup> )	Storage Capacity (1/MPa)
1.45	1.37E-19	4.1E-04
2.09	1.34E-19	3.2E-04
2.72	1.60E-19	2.0E-04
3.44	1.71E-19	1.6E-04
4.14	1.55E-19	1.6E-04
4.95	1.56E-19	1.4E-04
5.66	1.66E-19	1.2E-04
6.37	1.59E-19	1.2E-04
7.07	1.61E-19	1.1E-04
8.47	1.42E-19	1.0E-04
8.54	1.45E-19	1.1E-04
9.77	1.45E-19	1.1E-04
13.19	1.33E-19	1.0E-04

- B. Sample Number: 1087.3 to 1087.8 After.  
 Length: 2.662 cm  
 Volume: 13.49 cm<sup>3</sup>  
 Wet Weight: 31.458 g    Dry Weight: 29.586 g  
 Porosity: 13.8%  
 Average Mineral Density: 2.54 g/cm<sup>3</sup>

Effective Confining Pressure (MPa)	Permeability (m <sup>2</sup> )	Storage Capacity (1/MPa)
1.26	5.23E-19	2.8E-04
1.83	5.20E-19	2.0E-04
2.45	5.37E-19	1.6E-04
3.07	5.53E-19	1.5E-04
3.71	5.90E-19	1.3E-04
4.36	6.52E-19	1.2E-04
4.98	4.99E-19	1.4E-04
5.56	5.70E-19	1.2E-04
6.21	6.25E-19	1.1E-04
6.80	6.30E-19	1.1E-04
7.46	6.15E-19	1.1E-04
8.82	6.06E-19	1.1E-04
12.20	5.97E-19	1.1E-04
15.59	6.92E-19	1.0E-04
19.03	6.12E-19	1.0E-04
22.49	6.73E-19	1.0E-04
25.93	6.76E-19	9.3E-05
29.25	7.11E-19	9.5E-05

TABLE IV (cont)

## C. Sample Number 1100.6 to 1101.6 Before.

Length: 2.388 cm

Volume: 12.10 cm<sup>3</sup>

Wet Weight: 28.909 g      Dry Weight: 27.701 g

Porosity: 10.0%

Average Mineral Density: 2.54 g/cm<sup>3</sup>

Effective Confining Pressure (MPa)	Permeability (m <sup>2</sup> )	Storage Capacity (1/MPa)
0.50	6.45E-19	3.6E-04
1.02	4.74E-19	3.1E-04
1.74	3.36E-19	2.4E-04
2.48	3.13E-19	1.8E-04
3.20	2.98E-19	1.6E-04
3.89	2.90E-19	1.4E-04
4.46	2.89E-19	1.4E-04
5.16	2.75E-19	1.4E-04
5.92	2.59E-19	1.4E-04
6.56	2.53E-19	1.4E-04
7.23	2.55E-19	1.4E-04
8.64	2.36E-19	1.4E-04
11.99	2.21E-19	1.4E-04
15.27	1.97E-19	1.5E-04

## D. Sample Number: 1100.6 to 1101.6 After.

Length: 3.091 cm

Volume: 15.66 cm<sup>3</sup>

Wet Weight: 37.960 g      Dry Weight: 36.739 g

Porosity: 7.7%

Average Mineral Density: 2.54 g/cm<sup>3</sup>

Effective Confining Pressure (MPa)	Permeability (m <sup>2</sup> )	Storage Capacity (1/MPa)
0.38	2.37E-18	1.5E-04
0.76	1.36E-18	2.1E-04
1.39	9.16E-19	1.7E-04
2.08	7.07E-19	1.2E-04
2.67	6.50E-19	9.9E-05
3.28	6.13E-19	8.7E-05
3.99	5.86E-19	8.0E-05
4.54	5.57E-19	7.9E-05
5.21	5.71E-19	7.3E-05
6.00	5.32E-19	7.2E-05
6.85	4.93E-19	7.1E-05
7.67	4.87E-19	6.7E-05
9.23	4.60E-19	6.4E-05
16.19	3.73E-19	5.6E-05
22.23	3.64E-19	5.8E-05
25.43	3.53E-19	5.8E-05
28.23	3.34E-19	5.8E-05

TABLE V

## HYDRAULIC PROPERTIES OF CALICO HILLS TUFF

## A. Sample Number: 1370.8 to 1371.4 Before.

Length: 2.306 cm

Volume: 11.69 cm<sup>3</sup>

Wet Weight: 22.422 g      Dry Weight: 19.931 g

Porosity: 21.3%

Average Mineral Density: 2.17 g/cm<sup>3</sup>

Effective Confining Pressure (MPa)	Permeability (m <sup>2</sup> )	Storage Capacity (1/MPa)
0.51	5.29E-19	8.0E-04
0.97	5.93E-19	7.3E-04
1.53	6.93E-19	5.9E-04
2.06	8.74E-19	5.6E-04
2.69	9.63E-19	4.9E-04
3.32	8.83E-19	4.2E-04
3.94	9.84E-19	4.1E-04
4.53	9.68E-19	4.0E-04
5.18	9.44E-19	3.8E-04
5.87	8.88E-19	3.6E-04
6.60	9.03E-19	3.7E-04
8.03	8.40E-19	3.6E-04
11.47	8.95E-19	3.3E-04
14.94	8.91E-19	3.4E-04
18.37	9.34E-19	3.1E-04
21.57	1.03E-18	2.9E-04
25.12	9.00E-19	3.1E-04
28.02	2.58E-19	2.9E-04

## B. Sample Number: 1370.8 to 1371.4 After.

Length: 3.137 cm

Volume: 15.90 cm<sup>3</sup>

Wet Weight: 30.807 g      Dry Weight: 26.751 g

Porosity: 25.5%

Average Mineral Density: 2.26 g/cm<sup>3</sup>

Effective Confining Pressure (MPa)	Permeability (m <sup>2</sup> )	Storage Capacity (1/MPa)
0.78	7.04E-19	6.7E-04
1.29	7.07E-19	5.6E-04
1.89	1.03E-19	3.5E-04
2.46	1.14E-18	3.2E-04
3.09	1.03E-18	3.3E-04
3.81	9.57E-19	3.4E-04
4.45	1.09E-18	3.2E-04
5.18	9.15E-19	3.4E-04
5.83	9.59E-19	3.2E-04
6.49	9.79E-19	3.1E-04
7.04	8.34E-19	3.5E-04
8.37	9.11E-19	3.1E-04
11.55	9.02E-19	2.9E-04
14.41	9.70E-19	2.8E-04
18.11	8.96E-19	2.8E-04
21.63	8.39E-19	2.8E-04
24.95	8.34E-19	2.8E-04
28.25	8.28E-19	2.8E-04



TABLE V (cont)

C. Sample Number: 1370.8 to 1371.4 After.

Length: 3.137 cm

Volume: 15.90 cm<sup>3</sup>

Wet Weight: 30.807 g Dry Weight: 26.751 g

Porosity: 25.5%

Average Mineral Density: 2.26 g/cm<sup>3</sup>

Effective Confining Pressure (MPa)	Permeability (m <sup>2</sup> )	Storage Capacity (1/MPa)
7.34	1.03E-18	2.9E-04
8.03	9.65E-19	3.0E-04
8.57	8.89E-19	3.3E-04
9.17	9.92E-19	2.9E-04
10.49	9.68E-19	2.8E-04
13.60	9.60E-19	2.7E-04
16.69	9.02E-19	2.9E-04
19.92	9.56E-19	2.7E-04
23.06	9.31E-19	2.7E-04
26.14	8.53E-19	2.9E-04
28.49	8.10E-19	3.0E-04

D. Sample Number: 1640.9 to 1642.1 Before.

Length: 2.337 cm

Volume: 11.84 cm<sup>3</sup>

Wet Weight: 22.434 g Dry Weight: 19.000 g

Porosity: 29.0%

Average Mineral Density: 2.26 g/cm<sup>3</sup>

Effective Confining Pressure (MPa)	Permeability (m <sup>2</sup> )	Storage Capacity (1/MPa)
0.97	1.34E-18	7.2E-04
1.41	1.39E-18	6.4E-04
1.97	1.45E-18	5.6E-04
2.64	1.42E-18	5.3E-04
3.37	1.37E-18	5.2E-04
4.13	1.37E-18	4.8E-04
4.89	1.32E-18	4.5E-04
5.61	1.39E-18	4.2E-04
6.30	1.42E-18	4.0E-04
7.00	1.46E-18	3.9E-04
7.75	1.37E-18	4.1E-04
9.17	1.42E-18	3.7E-04
12.50	1.33E-18	3.6E-04
15.84	1.47E-18	3.5E-04
19.22	1.54E-18	3.2E-04
22.57	1.61E-18	3.2E-04
25.83	1.72E-18	3.1E-04
28.51	1.43E-18	3.3E-04

TABLE V (cont)

E. Sample Number: 1640.9 to 1642.1 After.

Length: 3.101 cm

Volume: 15.72 cm<sup>3</sup>

Wet Weight: 29.523 g Dry Weight: 24.984 g

Porosity: 28.9%

Average Mineral Density: 2.24 g/cm<sup>3</sup>

Effective Confining Pressure (MPa)	Permeability (m <sup>2</sup> )	Storage Capacity (1/MPa)
1.38	1.98E-18	4.4E-04
2.46	1.95E-18	3.6E-04
3.61	1.93E-18	3.5E-04
4.12	1.98E-18	3.5E-04
4.65	2.07E-18	3.6E-04
5.31	1.99E-18	3.4E-04
5.91	1.98E-18	3.4E-04
7.24	1.96E-18	3.3E-04
7.88	2.01E-18	3.3E-04
10.13	1.94E-18	3.3E-04
13.41	1.97E-18	3.2E-04
16.70	2.00E-18	3.1E-04
20.06	1.96E-18	3.1E-04
23.43	1.95E-18	3.1E-04
26.77	2.15E-18	3.6E-04
29.81	1.86E-18	3.1E-04

F. Sample Number: 1640.9 to 1642.1 After.

Length: 3.101 cm

Volume: 15.72 cm<sup>3</sup>

Wet Weight: 29.523 g Dry Weight: 24.984 g

Porosity: 28.9%

Average Mineral Density: 2.24 g/cm<sup>3</sup>

Effective Confining Pressure (MPa)	Permeability (m <sup>2</sup> )	Storage Capacity (1/MPa)
0.60	2.01E-18	2.9E-04
1.11	1.79E-18	4.0E-04
1.68	1.65E-18	3.8E-04
2.37	1.72E-18	3.3E-04
3.01	1.62E-18	3.1E-04
3.81	1.61E-18	3.0E-04
5.31	1.61E-18	2.9E-04
6.06	1.64E-18	2.9E-04
6.68	1.60E-18	2.8E-04
7.29	1.66E-18	2.8E-04
8.18	1.55E-18	2.6E-04
8.92	1.62E-18	2.7E-04
10.43	1.52E-18	2.7E-04
13.66	1.56E-18	2.5E-04
17.00	1.56E-18	2.5E-04
20.26	1.62E-18	2.5E-04
23.45	1.57E-18	2.5E-04
26.54	1.61E-18	2.5E-04
29.41	1.67E-18	2.6E-04

Sample from 1640.9 to 1642.1 ft, 120°C, 19.7-MPa confining pressure, 19.7-MPa pore pressure (2.5 months) (test #5, Table I).

Permeability of both of these samples decreased very slightly after exposure, but the changes are so small as to be insignificant. Storage capacity also remained virtually unchanged.

#### D. Conclusions

Permeability of the highly zeolitized Calico Hills tuff is essentially unchanged after elevated temperature and pressure exposure for times up to 5.5 months. However, the nonzeolitized, devitrified tuff from the Topopah Spring Member, with nearly the same initial permeability, showed what may be a real permeability increase in as little as 2.5 months. Recall that the major mineralogic changes observed above were dissolution of silica or feldspar minerals in devitrified tuffs but only surface modification of zeolites. These changes are consistent with changes in permeability of samples from the Topopah Spring Member, which consists mostly of silica and feldspar minerals, and lack of changes in the highly zeolitized Calico Hills samples.

The vertical variation in matrix permeability is as large or larger than the changes we observed in side-by-side samples before and after hydrothermal exposure. Therefore, we cannot rule out the possibility that residual sample inhomogeneity is responsible for the apparent changes we observed. Additional testing is needed in which permeability is measured as a function of time in the same sample held at constant temperature and pressure. Some testing of this nature has been performed (Morrow et al.),<sup>6</sup> but for short timespans (<1 month). Further tests of this type would indicate whether any changes noted are real. We believe that the mineralogic reactions identified above will cause changes in hydraulic transport properties of tuff. The important questions are what are the magnitudes and rates of such changes. We cannot answer these questions with certainty based on the results of this exploratory program, but it seems possible to do so with more extensive tests as described above.

#### V. FINAL SUMMARY AND CONCLUSIONS

The purpose of our test was to explore possible changes in important thermomechanical and transport properties of a range of tuff types from the Yucca Mountain site at NTS after extended exposure to conditions in a rough

way simulating those expected in the near-field environment of a repository in tuff. These conditions are not mirrored exactly since the temperatures used here generally exceed those expected in a repository. On the other hand, it was necessary to make preliminary interpretations of potential long-term changes on the basis of relatively short experiments, which we accelerated by somewhat higher test temperatures. It should be kept in mind that the thermal pulse of a repository will last for hundreds of years. During this time slow processes of the type we have identified could cause significant changes in the thermomechanical properties of the host rock. These should be taken into account and allowed for through studies of the kinetics of such processes.

We have observed relatively large differences in tensile strength, compressive strength, and permeability between control and altered samples. However, with a few exceptions, porosity and grain density were observed to be unaffected. Thermal properties of these samples were tested by coworkers at Sandia National Laboratories and were also found to be unaffected by the hydrothermal exposure.\* Mineralogic and petrologic examination of the test samples indicated the possible operation of reactions involving the dissolution of silica and feldspar, formation of clays, and conversion of clinoptilolite to mordenite. However, we have not been able to establish a one-to-one correlation of mineralogic and structural changes with physical properties changes. Changes in the relative amounts of minerals involved in these reactions were observed to be very small, reflecting the sluggish nature of the reactions. This can explain, in a qualitative way, why some properties were unchanged. For example, thermal properties are dominantly determined by the inherent thermal properties of the constituent mineral phases. Unless there are substantial changes in the amounts of minerals with significantly different thermal properties, the thermal properties of the rock are not expected to change. We believe that the strength changes we observed are related to the subtle surface modifications of minerals we observed, probably most active along grain boundaries and fracture surfaces where the catalytic action of water is effective. We expect that these same processes will be important in controlling the mechanics of discontinuities such as joints. Indeed, there is evidence that rock friction is time dependent, reflecting viscoplastic processes at point contacts of the surfaces.<sup>7</sup> It thus appears

---

\*Information provided by M. M. Moss, Sandia National Laboratories (1984).

that large changes in tuff mechanical properties may result from hydrothermal alteration, without correlated large changes in mineralogy or thermal properties. It is not clear if the rates of strength reduction implied by our tests can be extrapolated to long times.

A quantitative determination of these time-dependent phenomena will require careful measurements on target-horizon tuff samples held at simulated repository conditions for long time periods. For example, it is not known what effects might be anticipated during heating and cooling cycles in unsaturated devitrified tuff such as the Topopah Spring Member, which is the potential host rock at Yucca Mountain. Detailed examination of tested samples should identify the physical-chemical mechanisms involved. In addition, the difficult task of determining the rates of the processes leading to changes in mechanical properties will be required. Once these rates (or at least reasonable estimates) are determined, they can be incorporated in design and performance models to predict or bound the mechanical response of the host rock mass over both the operational time of the repository and after closure.

#### ACKNOWLEDGMENTS

The work described here was carried out as part of the NNWSI managed by the Nevada Operations office of the U.S. DOE.

#### REFERENCES

1. J. D. Blacic, J. Carter, P. Halleck, P. Johnson, T. Shankland, R. Andersen, K. Spicchi, and A. Heller, "Effects of long-term exposure of tuff to high-level nuclear waste-repository conditions: Preliminary report," Los Alamos National Laboratory report LA-9174-PR, (February 1982).
2. R. W. Spengler, F. M. Byers, and J. B. Warner, "Stratigraphy and structure of volcanic rocks in drill hole USW-G1, Yucca Mountain, Nye County, Nevada," U.S. Geological Survey open-file report 81-1349 (1981).
3. D. L. Bish, F. A. Caporuscio, J. F. Copp, B. M. Crowe, J. D. Purson, J. R. Smyth, and R. G. Warren, "Preliminary stratigraphic and petrologic characterization of core samples from USW-G1, Yucca Mountain, Nevada," Los Alamos National Laboratory report LA-8840-MS (November 1981).
4. F. Caporuscio, D. Vaniman, D. Bish, D. Broxton, B. Arney, G. Heiken, F. Byers, R. Gooley, and E. Semarge, "Petrologic studies of drill cores USW-G2 and UE25b-1H, Yucca Mountain, Nevada," Los Alamos National Laboratory report LA-9255-MS (July 1982).

5. J. V. Tracy Hsieh, C. B. Neuzil, J. D. Bredehoeft, and S. E. Silliman, "A transient laboratory method for determining the hydraulic properties of 'tight' rocks -- I. Theory," Int. J. Rock Mech. Min. Sci. Geomech. Abstr. 18, 245-252 (1981).
6. C. A. Morrow, D. E. Moore, and J. D. Byerlee, "Permeability and pore-fluid chemistry of the Topopah Spring Member of the Paintbrush Tuff, Nevada Test Site, in a temperature gradient-application to nuclear waste storage," Mat. Res. Soc. Symp. Proc. Vol. 26, 883-890 (1984).
7. J. H. Dieterich, "Time-dependent friction and the mechanics of stick-slip," Pageoph. 116, 790-806 (1978).

# APPENDIX

## ELECTRON PROBE ANALYSES OF ZEOLITES AND CLAYS

TABLE A-I  
ZEOLITE ANALYSES

Representative zeolite analyses in Calico Hills  
sample from the 1667.3 to 1668.4 ft depth of  
UE-25a#1, before heating.

Zeolites in Calico Hills from  
the 1667.3 to 1668.4 ft depth  
of UE-25a#1, before heating.

SiO <sub>2</sub>	64.2	66.7	63.1	63.3
Al <sub>2</sub> O <sub>3</sub>	11.2	11.5	11.2	10.8
FeO	0.00	0.01	0.00	0.00
MgO	0.00	0.00	0.00	0.00
CaO	3.70	3.51	3.46	3.47
Na <sub>2</sub> O	0.47	0.95	0.78	0.79
K <sub>2</sub> O	2.78	3.05	2.87	2.40
BaO	0.00	0.00	0.00	0.00
Σ	82.3	85.7	81.4	80.8

SiO <sub>2</sub>	69.1	68.3
Al <sub>2</sub> O <sub>3</sub>	12.3	11.8
FeO	0.00	0.00
MgO	0.00	0.00
CaO	4.07	3.50
Na <sub>2</sub> O	0.80	1.00
K <sub>2</sub> O	2.70	3.30
BaO	0.00	0.00
Σ	89.0	87.9

Si	14.96	14.97	14.92	15.02
Al	3.07	3.05	3.11	3.01
Σtet	18.03	18.02	18.03	18.03
Fe	0.00	0.00	0.00	0.00
Mg	0.00	0.00	0.00	0.00
Ca	0.92	0.84	0.87	0.88
Na	0.21	0.41	0.35	0.36
K	0.82	0.87	0.86	0.72
Ba	0.00	0.00	0.00	0.00
Σlarge				
cations	1.95	2.12	2.08	1.96
Σcations	19.98	20.14	20.11	19.99

Si	14.91	14.97
Al	3.12	3.04
Σtet	18.03	18.01
Fe	0.00	0.00
Mg	0.00	0.00
Ca	0.94	0.82
Na	0.33	0.42
K	0.74	0.92
Ba	0.00	0.00
Σlarge		
cations	2.01	2.16
Σcations	20.04	20.17

Ca	47	40	42	45
Na	11	19	17	18
K	42	41	41	37

Ca	47	38
Na	16	20
K	37	43

TABLE A-I (cont)

Zeolites in Calico Hills from the 1667.3 to 1668.4 ft depth of UE-25a#1, after 120°C for 2.5 months (Test #5, Table I).

Sample Center	
SiO <sub>2</sub>	68.2
Al <sub>2</sub> O <sub>3</sub>	12.4
FeO	0.00
MgO	0.00
CaO	4.29
Na <sub>2</sub> O	0.85
K <sub>2</sub> O	2.38
BaO	0.00
Σ	88.1
Si	14.84
Al	3.19
Σtet	18.03
Fe	0.00
Mg	0.00
Ca	1.00
Na	0.36
K	0.66
Ba	0.00
Σlarge cations	2.02
Σcations	20.05
Ca	50
Na	18
K	33

Zeolites in Calico Hills from the 1667.3 to 1668.4 ft depth of UE-25a#1, after heating at 120°C for 2.5 months (Test #5, Table I).

Sample Center			
SiO <sub>2</sub>	68.8	66.5	68.2
Al <sub>2</sub> O <sub>3</sub>	12.3	12.0	11.4
FeO	0.00	0.00	0.00
MgO	0.00	0.00	0.00
CaO	3.92	4.02	3.50
Na <sub>2</sub> O	0.79	0.88	0.96
K <sub>2</sub> O	2.71	2.31	2.75
BaO	0.00	0.00	0.00
Σ	88.6	85.7	86.9
Si	14.90	14.88	15.05
Al	3.14	3.17	2.97
Σtet	18.04	18.05	18.02
Fe	0.00	0.00	0.00
Mg	0.00	0.00	0.00
Ca	0.91	0.96	0.82
Na	0.32	0.37	0.41
K	0.74	0.65	0.77
Ba	0.00	0.00	0.00
Σlarge cations	1.97	1.99	2.00
Σcations	20.01	20.04	20.02
Ca	46	48	41
Na	16	19	20
K	38	33	39



TABLE A-I (cont)

Zeolites in Calico Hills from the 1667.3 to 1668.4 ft depth of UE-25a#1, after heating at 120°C for 2.5 months (Test #5, Table I).

	<u>Sample Center</u>		<u>Sample Rim</u>
SiO <sub>2</sub>	68.4	66.2	67.2
Al <sub>2</sub> O <sub>3</sub>	12.1	10.9	11.9
FeO	0.00	0.19	0.00
MgO	0.00	0.00	0.00
CaO	3.82	3.30	3.57
Na <sub>2</sub> O	1.01	0.66	1.23
K <sub>2</sub> O	2.61	2.77	2.56
BaO	0.00	0.00	0.00
$\Sigma$	88.0	84.0	86.5
Si	14.93	15.11	14.93
Al	3.10	2.92	3.11
$\Sigma$ tet	18.03	18.03	18.04
Fe	0.00	0.03	0.00
Mg	0.00	0.00	0.00
Ca	0.89	0.80	0.85
Na	0.42	0.29	0.53
K	0.72	0.80	0.72
Ba	0.00	0.00	0.00
$\Sigma$ large cations	2.03	1.92	2.10
$\Sigma$ cations	20.06	19.95	20.14
Ca	44	42	40
Na	21	15	25
K	36	42	34

Zeolites in Calico Hills from the 1667.3 to 1668.4 ft depth of UE-25a#1, after heating at 120°C for 2.5 months (Test #5, Table I).

	<u>Sample Rim</u>
SiO <sub>2</sub>	65.9
Al <sub>2</sub> O <sub>3</sub>	11.4
FeO	0.03
MgO	0.00
CaO	3.87
Na <sub>2</sub> O	0.96
K <sub>2</sub> O	2.07
BaO	0.00
$\Sigma$	84.2
Si	14.96
Al	3.06
$\Sigma$ tet	18.02
Fe	0.00
Mg	0.00
Ca	0.94
Na	0.42
K	0.59
Ba	0.00
$\Sigma$ large cations	1.95
$\Sigma$ cations	19.97
Ca	48
Na	22
K	30

TABLE A-I (cont)

Zeolites in Calico Hills from the 1667.3 to 1668.4 ft depth of UE-25a#1, after 180°C for 3.5 months (Test #7, Table I).

SiO <sub>2</sub>	62.2	65.5	69.3	63.8
Al <sub>2</sub> O <sub>3</sub>	11.1	12.1	12.0	10.7
FeO	0.01	0.03	0.00	0.00
MgO	0.00	0.00	0.00	0.00
CaO	3.42	3.82	3.90	3.68
Na <sub>2</sub> O	0.76	1.03	1.27	0.69
K <sub>2</sub> O	2.30	2.69	2.90	2.16
BaO	0.63	0.00	0.00	0.00
Σ	80.4	85.2	89.4	81.0

Si	14.92	14.81	14.92	15.06
Al	3.14	3.22	3.05	2.97
Σtet	18.06	18.03	17.97	18.03
Fe	0.00	0.00	0.00	0.00
Mg	0.00	0.00	0.00	0.00
Ca	0.87	0.92	0.90	0.93
Na	0.35	0.45	0.52	0.31
K	0.70	0.78	0.80	0.65
Ba	0.06	0.00	0.00	0.00

Σlarge cations	1.98	2.15	2.22	1.89
Σcations	20.04	20.18	20.19	19.92

Ca	45	43	40	49
Na	18	21	24	16
K	36	36	36	34

Zeolites in Calico Hills from the 1667.3 to 1668.4 ft depth of UE-25a#1, after 180°C for 3.5 months (Test #7, Table I).

SiO <sub>2</sub>	67.2
Al <sub>2</sub> O <sub>3</sub>	12.5
FeO	0.00
MgO	0.00
CaO	4.06
Na <sub>2</sub> O	1.03
K <sub>2</sub> O	3.04
BaO	0.00
Σ	87.8

Si	14.76
Al	3.24
Σtet	18.00
Fe	0.00
Mg	0.00
Ca	0.95
Na	0.43
K	0.84
Ba	0.00

Σlarge cations	2.22
Σcations	20.22

Ca	43
Na	20
K	38

TABLE A-II  
CLAY ANALYSES

Clay analyses in Bullfrog sample from the 2380.6 to 2381.2 ft depth of USW G-1, after soaking in J-13 well water at 180°C for 3.5 months (Test #8, Table I).

$\text{SiO}_2$	55.0	59.7	55.9	56.3	55.4
$\text{TiO}_2$	0.02	0.01	0.09	0.00	0.04
$\text{Al}_2\text{O}_3$	21.6	23.0	21.7	21.6	22.0
FeO	3.70	4.26	4.41	4.14	3.80
MnO	0.20	0.17	0.25	0.19	0.20
MgO	2.16	2.37	2.22	2.39	2.20
CaO	1.37	1.45	1.40	1.52	1.46
$\text{Na}_2\text{O}$	1.77	2.20	1.84	1.92	1.83
$\text{K}_2\text{O}$	0.44	0.31	0.53	0.44	0.61
$\Sigma$	86.2	93.5	88.4	88.5	87.4
Si	7.64	7.67	7.63	7.65	7.61
IV <sub>AL</sub>	0.36	0.33	0.36	0.35	0.39
$\Sigma_{\text{tet}}$	8.00	8.00	8.00	8.00	8.00
VI <sub>AL</sub>	3.18	3.16	3.13	3.11	3.16
Ti	0.00	0.00	0.01	0.00	0.00
Fe	0.43	0.46	0.50	0.47	0.44
Mn	0.02	0.01	0.03	0.02	0.02
Mg	0.44	0.45	0.45	0.48	0.45
$\Sigma_{\text{oct}}$	4.10	4.08	4.11	4.08	4.07
Ca	0.20	0.20	0.20	0.22	0.21
Na	0.47	0.55	0.48	0.51	0.49
K	0.08	0.05	0.09	0.08	0.10
$\Sigma_{\text{inter-layer}}$	0.75	0.80	0.77	0.81	0.80