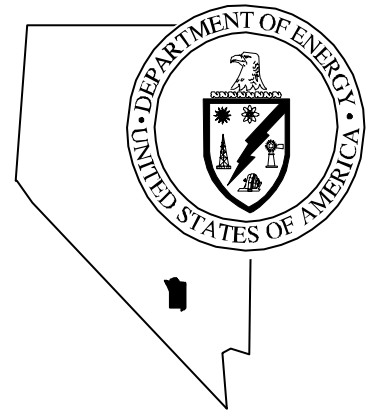


Nevada  
Environmental  
Restoration  
Project

DOE/NV--523



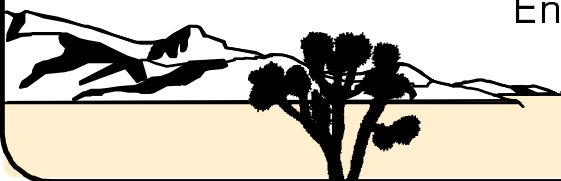
Corrective Action  
Investigation Plan for  
Corrective Action Unit 486:  
Double Tracks RADSAFE Area  
Nellis Air Force Range, Nevada

Controlled Copy No.:  
Revision No.: 0

October 1998

Approved for public release; further dissemination unlimited

Environmental Restoration  
Division



U.S. Department of Energy  
Nevada Operations Office

Available to the public from -  
U.S. Department of Commerce  
National Technical Information Service  
5285 Port Royal Road  
Springfield, VA 22161  
(703) 487-4650

Available electronically at <http://www.doe.gov/bridge>. Available to  
U.S. Department of Energy and its contractors in paper from -  
U.S. Department of Energy  
Office of Scientific and Technical Information  
P.O. Box 62  
Oak Ridge, TN 37831-0062  
(423) 576-8401



**CORRECTIVE ACTION INVESTIGATION PLAN FOR  
CORRECTIVE ACTION UNIT 486:  
DOUBLE TRACKS RADSAFE AREA  
NELLIS AIR FORCE RANGE, NEVADA**

DOE Nevada Operations Office  
Las Vegas, Nevada

Controlled Copy No.:

Revision No.: 0

October 1998

Approved for public release; further dissemination unlimited

**CORRECTIVE ACTION INVESTIGATION PLAN FOR  
CORRECTIVE ACTION UNIT 486:  
DOUBLE TRACKS RADSAFE AREA  
NELLIS AIR FORCE RANGE, NEVADA**

Approved by: Kevin Calkh

Date: 10-8-98

Janet Appenzeller-Wing, Project Manager  
Industrial Sites Subproject

for Approved by: Robert M. Wycoff Jr.

Date: 10/8/98

Runore C. Wycoff, Project Manager  
Nevada Environmental Restoration Project

## Table of Contents

---

List of Figures .....	iii
List of Tables .....	iv
List of Acronyms and Abbreviations .....	v
Executive Summary .....	ES-1
1.0 Introduction .....	1
1.1 Purpose .....	4
1.2 Scope .....	4
1.3 CAIP Contents .....	5
2.0 Facility Description .....	7
2.1 Physical Setting .....	7
2.2 Operational History .....	7
2.3 Waste Inventory .....	10
2.4 Release Information .....	11
2.5 Investigative Background .....	11
2.6 <i>National Environmental Policy Act (NEPA) Requirements</i> .....	16
3.0 Objectives .....	17
3.1 Conceptual Site Model .....	17
3.2 Contaminants of Potential Concern .....	18
3.3 Preliminary Action Levels .....	18
3.3.1 Field Screening Levels .....	18
3.3.2 Chemical Preliminary Action Levels .....	19
3.3.3 Radiological Preliminary Action Levels .....	19
3.4 DQO Process Discussion .....	20
4.0 Field Investigation .....	22
4.1 Technical Approach .....	23
4.2 Excavation Activities .....	23
4.3 Subsurface Sampling .....	27
4.3.1 Field Screening .....	28
4.3.2 Sampling Criteria .....	29
4.4 Quality Control Samples .....	30
4.5 Background Samples .....	31
4.6 Geotechnical Samples .....	31
5.0 Waste Management .....	33
5.1 Waste Minimization .....	33
5.2 Potential Waste Streams .....	34

## **Table of Contents** *(Continued)*

---

5.3	Investigation-Derived Waste Management .....	34
5.3.1	Sanitary Wastes .....	35
5.3.2	Low-Level Radioactive Waste .....	35
5.3.3	Hazardous Waste .....	36
5.3.4	Mixed Wastes.....	37
6.0	Duration and Records Availability .....	39
6.1	Duration .....	39
6.2	Records Availability .....	39
7.0	References.....	40

### **Appendix A - Data Quality Objectives Process**

A.1.0	DQO Kickoff Meeting .....	A-1
A.2.0	Problem Statement .....	A-2
A.2.1	State the Problem .....	A-2
A.2.1.1	Problem to be Resolved .....	A-2
A.2.1.2	Site History and Known or Suspected Sources of Contamination....	A-2
A.3.0	Conceptual Model.....	A-3
A.3.1	Contaminants of Potential Concern .....	A-3
A.3.2	Conceptual Site Model .....	A-3
A.4.0	Decisions, Input, and Strategy .....	A-7
A.4.1	Decisions to be Resolved by the Investigation.....	A-7
A.4.2	Inputs and Strategy .....	A-7
A.5.0	Decision Rules .....	A-9
A.6.0	Decision Error.....	A-10
A.7.0	Sampling Design.....	A-12

### **Appendix B - Project Organization**

B.1.0	Project Organization .....	B-1
-------	----------------------------	-----

### **Appendix C - NDEP Document Review Sheet**

## ***List of Figures***

---

<b><i>Number</i></b>	<b><i>Title</i></b>	<b><i>Page</i></b>
1-1	Nellis Air Force Range 71 North and Tonopah Test Range Location Map . . . . .	2
1-2	Location of CAU 486, Double Tracks RADSAFE Area Range 71 North, Nellis Air Force Range, Nye County, Nevada. . . . .	3
2-1	Potential Locations for the Areas of Concern at the DTRSA . . . . .	9
2-2	Double Tracks RADSAFE Area 1998 Geophysical Survey Location Map, Nellis Range 71N, Nye County, Nevada. . . . .	12
2-3	EM-61 Survey for Area 2 and Area 6 at the DTRSA . . . . .	14
2-4	Area 6 Ground Penetrating Radar (GPR) Anomaly DTRSA, Range 71N, Nye County, Nevada . . . . .	15
4-1	Proposed Trenching Lines. . . . .	24
4-2	Area 2 and Area 6 Geophysical Traverse Location Maps with Potential Soil Boring Locations . . . . .	26
A.7-1	Decision Diagram . . . . .	A-13
A.7-2	Proposed Trenching Locations . . . . .	A-14
A.7-3	Possible Borehole Locations and Proposed Grid Area for Possible Random Sampling. . . . .	A-16
A.7-4	Double Tracks RADSAFE Area CAS 71-23-001-71DT EM61 Top Coil . . . . .	A-18
A.7-5	Double Tracks RADSAFE Area GPR Excavation Examples . . . . .	A-19

## ***List of Tables***

---

<b><i>Number</i></b>	<b><i>Title</i></b>	<b><i>Page</i></b>
3-1	Laboratory Analytical Requirements . . . . .	21
4-1	Geotechnical Analyses . . . . .	32
A.3-1	Contaminants of Potential Concern. . . . .	A-4
A.3-2	Conceptual Model . . . . .	A-5
A.4-1	Decision/Input Table for CAU 486. . . . .	A-8

## ***List of Acronyms and Abbreviations***

---

ALARA	As low as reasonably achievable
Am	Americium
bgs	Below ground surface
CADD	Corrective Action Decision Document
CAIP	Corrective Action Investigation Plan
CAS	Corrective action site(s)
CAU	Corrective action unit(s)
COPC	Contaminant(s) of potential concern
DOE	U.S. Department of Energy
DOE/NV	U.S. Department of Energy, Nevada Operations Office
DOT	U.S. Department of Transportation
DQO	Data quality objective(s)
DTRSA	Double Tracks RADSAFE Area
DU	Depleted Uranium
EM	Electromagnetic
EPA	U.S. Environmental Protection Agency
FFACO	<i>Federal Facility Agreement and Consent Order</i>
FIDLER	Field instrument for the detection of low energy radiation
ft	Foot (feet)
ft <sup>2</sup>	Square foot (feet)
GPR	Ground-penetrating radar
HASP	Health and safety plan
IDW	Investigation-derived waste

## ***List of Acronyms and Abbreviations (Continued)***

---

IT	IT Corporation
km	Kilometer(s)
LLW	Low-level radioactive waste
m	Meter(s)
m <sup>2</sup>	Square meter(s)
MARSSIM	Multi-Agency Radiation Survey and Site Investigation Manual
MEK	Methyl ethyl ketone
mi	Mile(s)
mg/kg	Milligram(s) per kilogram
mg/L	Milligram(s) per liter
MS/MSD	Matrix spike/matrix spike duplicate
NAC	<i>Nevada Administrative Code</i>
NDEP	Nevada Department of Environmental Protection
NEPA	<i>National Environmental Policy Act</i>
NTS	Nevada Test Site
NTSWAC	<i>Nevada Test Site Waste Acceptance Criteria</i>
PAL	Preliminary action levels
PCB	Polychlorinated biphenyl(s)
pCi/g	Picocurie(s) per gram
pCi/L	Picocurie(s) per liter
PPE	Personal protective equipment
ppm	Part(s) per million
Pu	Plutonium
PRG	Preliminary Remediation Goal(s)

## ***List of Acronyms and Abbreviations (Continued)***

---

QA/QC	Quality assurance/quality control
QAPP	Quality assurance project plan
RADSAFE	Radiological safety
RCRA	<i>Resource Conservation and Recovery Act</i>
SAIC	Science Applications International Corporation
SSHASP	Site-specific health and safety plan
SVOC	Semivolatile organic compound(s)
TID	Tamper-indicating device(s)
TPH	Total petroleum hydrocarbon
TRU	Transuranic
TTR	Tonopah Test Range
VOC	Volatile organic compound(s)
µg/L	Microgram(s) per liter
UTM	Universal Transverse Mercator
UXO	Unexploded ordnance

## ***Executive Summary***

The Corrective Action Investigation Plan for Corrective Action Unit (CAU) 486, the Double Tracks Radiological Safety (RADSAFE) Area, has been developed in accordance with the *Federal Facility Agreement and Consent Order* that was agreed to by the U.S. Department of Energy, Nevada Operations Office; the Nevada Division of Environmental Protection; and the U.S. Department of Defense. Corrective Action Unit 486 consists of a single Corrective Action Site, 71-23-001-71DT.

The Double Tracks RADSAFE Area was used during May 1963 to decontaminate vehicles, personnel, and animals from the Double Tracks experiment. The site is one of three areas identified as a potential location for disposal of radioactively contaminated material from the Double Tracks experiment. The other two locations are the Cactus Spring Waste Trenches (CAU 426) and the Roller Coaster RADSAFE Area (CAU 407), both of which have been investigated. Liquid wastes from the decontamination operations were drained from a gravel decontamination pad to a sump. The gravel associated with the decontamination pad was removed and placed in the sump, possibly with other solid waste and contaminated debris. Radioactively contaminated material associated with animal decontamination activities may have been disposed of in a pit historically referred to as the “animal burial pit.” The sump and animal burial pit were backfilled.

Based on site history collected to support the Data Quality Objectives process, contaminants of potential concern for the site include plutonium, depleted uranium, methyl ethyl ketone, semivolatile organic compounds, and petroleum hydrocarbons. A conceptual site model for the Corrective Action Unit was developed as follows:

- Trench locations and boundaries for the decontamination facility and the animal burial pit are unknown. Historical investigations indicate that the vehicle and personnel decontamination area were located in the southern half of the site while the animal burial pit was located in the northern half.
- Contaminants of potential concern primarily associated with decontamination fluids were released into the soil at the decontamination facility (i.e., vehicle washdown pad, decontamination sump).
- Contaminants of potential concern in solid form were released into the soil primarily at the animal burial pit.

- Post-shot radionuclide concentrations measured on the animal wagons stationed on the arc arrays are low. These concentrations are assumed to be worst case for radiological contamination at both the decontamination facility and animal burial pit.
- Lateral migration of contaminants of potential concern is limited to within the trench dimensions.
- Vertical migration of contaminants of potential concern is limited to less than 6 meters (20 feet) from the ground surface or 3 meters (10 feet) from the bottom of the trench.
- Intrusion by site personnel working on range may be a hazard because the site is not posted with signs nor restricted by fences. Because of this, the potential for exposure to contaminated soil or to buried waste exists.
- Environmental conditions (i.e., arid climate) and depth to groundwater (250-270 meters) at the site make impact to groundwater by downward migration of contaminants of potential concern highly unlikely.
- There is a potential for surface water runoff to expose buried waste, if present, during significant rainfall events because drainage patterns on the alluvial fan surface dissect parts of the site in which the trenches are believed to exist.

A more detailed conceptual site model is presented in [Section 3.0](#) of this investigation plan. The conceptual model serves as the basis for the sampling strategy.

The technical approach for investigating this CAU consists of the following activities:

- Excavation of proposed trenching lines to delineate the site boundaries of the decontamination facility and animal burial pit
- Subsurface biased sampling within identified site boundaries using soil borings
- Subsurface random sampling if site boundaries cannot be identified for the decontamination facility

Field screening methods will be used to detect preliminary concentrations of volatile organics and radionuclides. Samples will be collected for laboratory analysis from within each site boundary.

Additional sampling and analytical details are presented in [Section 4.0](#) of the Corrective Action Investigation Plan. Details of the waste management strategy for the CAU are included in [Section 5.0](#) of the investigation plan.

Under the *Federal Facility Agreement and Consent Order*, the Corrective Action Investigation Plan will be submitted to the Nevada Department of Environmental Protection for approval. Field work will be conducted following approval of the plan. The results of the field investigation will support a defensible evaluation of corrective action alternatives in the Corrective Action Decision Document.

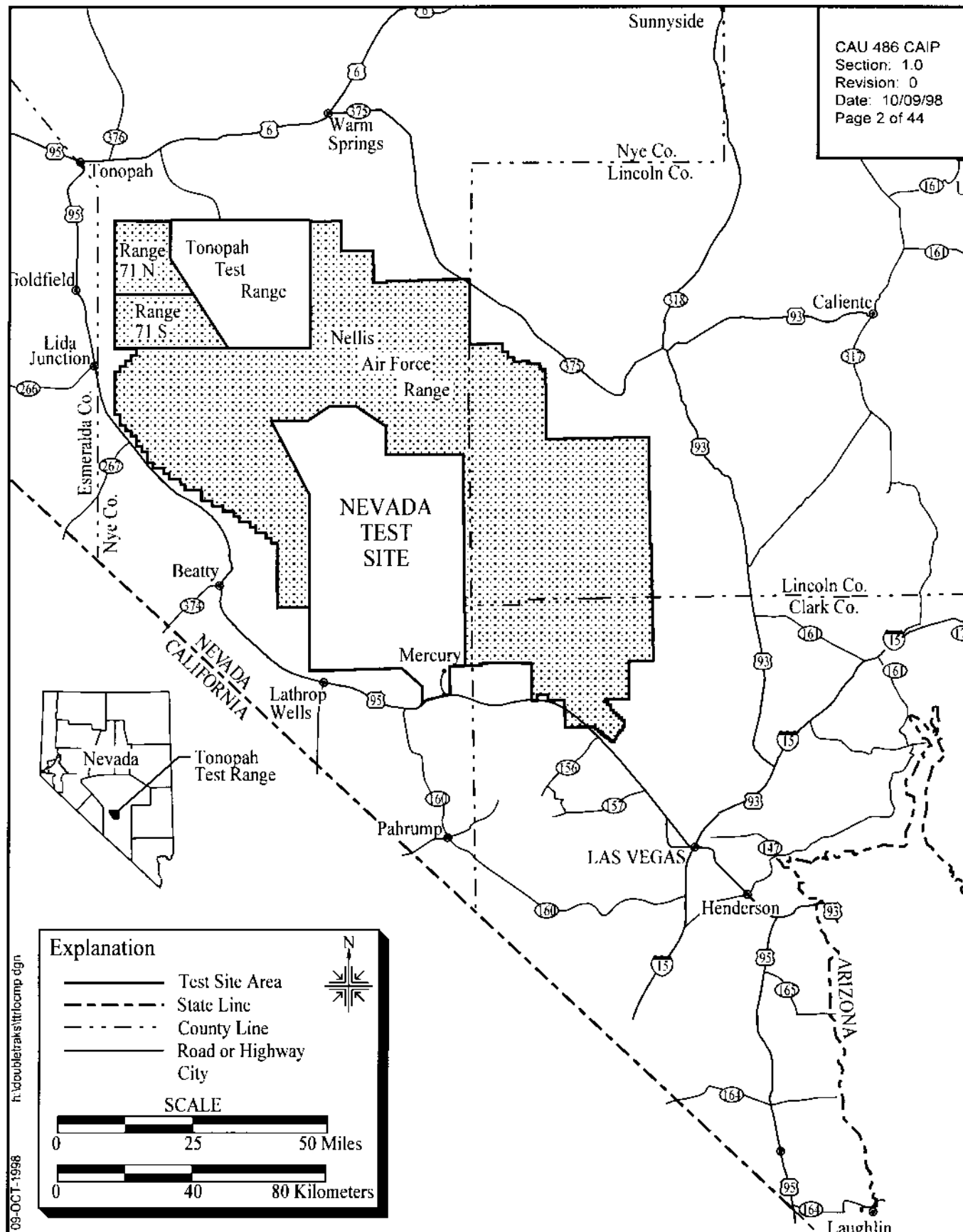
## 1.0 Introduction

---

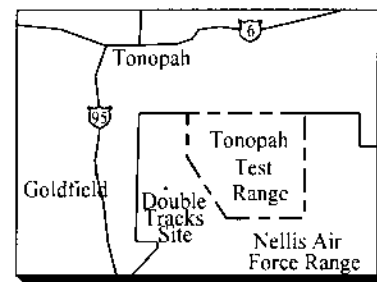
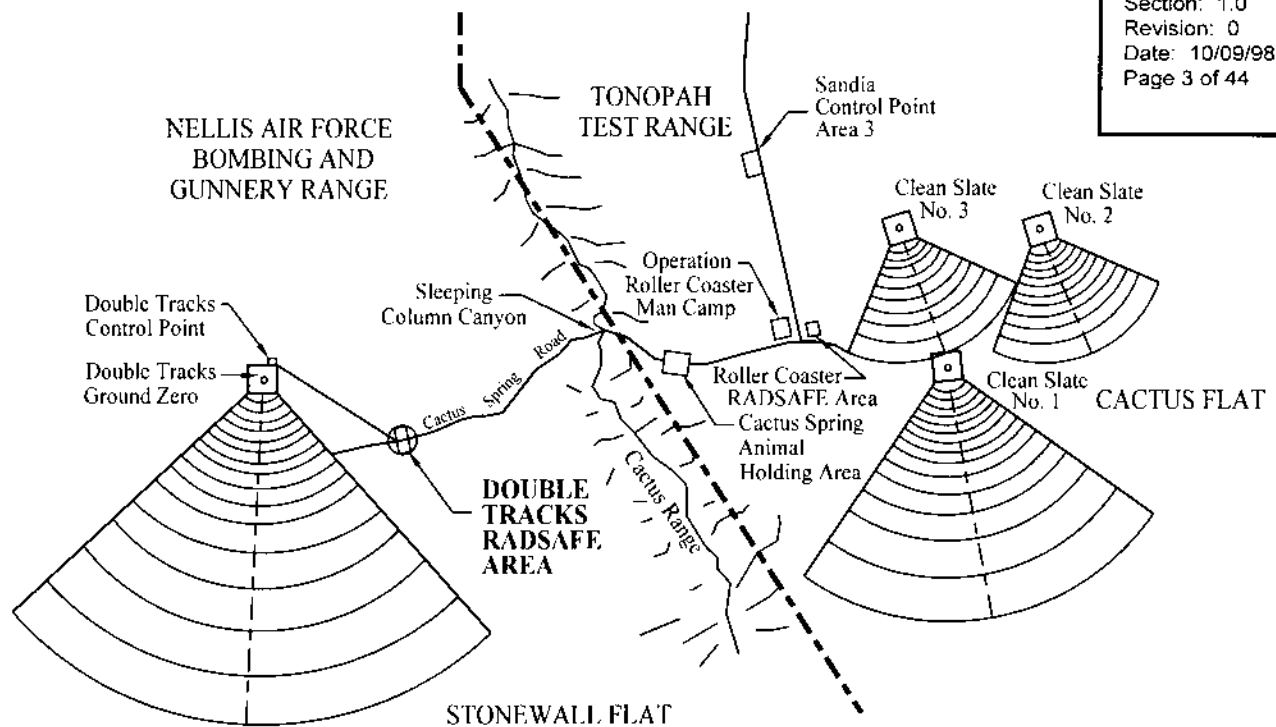
This Corrective Action Investigation Plan (CAIP) has been developed in accordance with the *Federal Facility Agreement and Consent Order* (FFACO) that was agreed to by the U.S. Department of Energy, Nevada Operations Office (DOE/NV); the State of Nevada Division of Environmental Protection (NDEP); and the U.S. Department of Defense (FFACO, 1996). The CAIP is a document that provides or references all of the specific information for investigation activities associated with Corrective Action Units (CAUs) or Corrective Action Sites (CASs). According to the FFACO, CASs are sites potentially requiring corrective action(s) and may include solid waste management units or individual disposal or release sites (FFACO, 1996). Corrective Action Units consist of one or more CASs grouped together based on geography, technical similarity, or agency responsibility for the purpose of determining corrective actions.

This CAIP contains the environmental sample collection objectives and the criteria for conducting site investigation activities at CAU 486, the Double Tracks Radiological Safety (RADSAFE) Area (DTRSA) which is located on the Nellis Air Force Range 71North (N), west of the Tonopah Test Range (TTR). The TTR, included in the Nellis Air Force Range Complex, is approximately 255 kilometers (km) (140 miles [mi]) northwest of Las Vegas, Nevada ([Figure 1-1](#)). Corrective Action Unit 486 is comprised of CAS 71-23-001-71DT consisting of two areas of concern referred to as the vehicle decontamination area and the animal burial pit.

The DTRSA is located on the west side of the Cactus Range approximately 8 km (5 mi) southwest of the Cactus Spring gate at the intersection of the Cactus Spring Road and the Double Tracks Control Point Road ([Figure 1-2](#)). The DTRSA was used during May 1963 to decontaminate vehicles, equipment, personnel, and animals from the Double Tracks test. The DTRSA is one of three areas identified as a potential location for the disposal of radioactively contaminated materials from the Double Tracks experiment. The other two locations are the Cactus Spring Waste Trenches (CAU 426) and the Roller Coaster RADSAFE Area (CAU 407), both of which have been investigated. The surface and subsurface soils are likely to have been impacted by plutonium and other contaminants of potential concern (COPCs) associated with decontamination activities at this site.



**Figure 1-1**  
**Nellis Air Force Range 71 North and Tonopah Test Range Location Map**



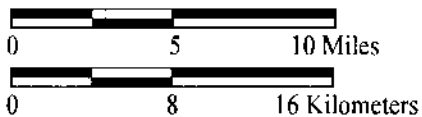
#### Explanation

--- Tonopah Test Range Boundary

#### Note

Size of arc arrays are not to scale and do not reflect actual areas of contamination that resulted from Double Tracks and Clean Slate tests.

#### Scale



Source: Modified from Burnett et al., 1964

**Figure 1-2**

**Location of CAU 486, Double Tracks RADSAFE Area  
 Range 71 North, Nellis Air Force Range, Nye County, Nevada**

## **1.1 Purpose**

This CAIP presents a plan to investigate the DTRSA where unregulated disposal of radioactive and possibly hazardous waste occurred during decontamination activities for the Double Tracks test. The purpose of the corrective action investigation described in this CAIP is to:

- Identify and verify the locations of the decontamination facility and animal burial pit within the DTRSA.
- Identify the presence and nature of COPCs.
- Determine the vertical and lateral extent of COPCs.
- Provide sufficient information and data to develop and evaluate appropriate corrective actions for the CAS.

This CAIP was developed using the U.S. Environmental Protection Agency (EPA) Data Quality Objectives (DQOs) (EPA, 1994d) process to clearly define the goals for collecting environmental data, to determine data uses, and to design a data collection program that will satisfy these uses. A DQO scoping meeting was held prior to preparation of this plan; a brief summary of the DQOs is presented in [Section 3.4](#). A more detailed summary of the DQO process and results is included in [Appendix A](#).

## **1.2 Scope**

The scope of this CAIP is to resolve the problem statement identified in the DQO process (see [Appendix A](#)). This problem entails the disposal of radioactive and possibly hazardous wastes at the DTRSA, and existing data are insufficient to support selection of a corrective action for the CAU. Therefore, the scope of the corrective action investigation at the DTRSA includes the following tasks that must be accomplished to answer the problem statement:

- Conduct excavation activities to identify and verify the boundary locations of the vehicle decontamination (decon) facility and the animal burial pit.
- Drill boreholes using a sonic drilling method or other suitable methods capable of reaching the expected vertical extent of COPCs, of penetrating potential subsurface geologic and project related anomalies (e.g., caliche, gravel, or buried waste), and of providing suitable core for sample collection and logging of subsurface conditions.

- Conduct field screening to direct drilling and sampling activities and provide an initial assessment of the subsurface conditions. Potential limitations in field screening capabilities for radionuclides will be addressed through laboratory analysis.
- Collect soil samples for laboratory analysis of environmental and geotechnical parameters.
- Log core to assess soil and waste characteristics.

### **1.3 CAIP Contents**

[Section 1.0](#) of this CAIP provides an introduction to this project, including the purpose and scope for this corrective action investigation. The remainder of the document details the investigation strategy and complies with FFACO (1996) requirements that CAIPs address the following elements:

- Management
- Technical aspects
- Quality assurance
- Health and safety
- Public involvement
- Field sampling
- Waste management

The managerial aspects of this project are discussed in the DOE/NV *Project Management Plan* (DOE/NV, 1994b) and the site-specific Field Management Plan that will be developed prior to field activities. A facility description is presented in [Section 2.0](#). The technical aspects of this CAIP are contained in [Section 3.0](#) and [Section 4.0](#) of this document and in the DQO summary presented in [Appendix A](#). Also discussed in [Section 4.0](#) are the field sampling activities and general health and safety concerns. General field and laboratory quality assurance and quality control (QA/QC) issues, including collection of QC samples, are presented in the *Industrial Sites Quality Assurance Project Plan* (QAPP) (DOE/NV, 1996d); the methods for field QA/QC are discussed in approved procedures. The generic health and safety aspects of this project are discussed in the *Environmental Restoration Project Health and Safety Plan* (HASP) (DOE/NV, 1996b) and will also be supplemented with a site-specific HASP (SSHASP) written prior to the start of field work. No CAU-specific public involvement activities are planned at this time; however, an overview of public involvement is documented in the “Public Involvement Plan” in Appendix V of the FFACO (1996). Waste management issues are discussed in [Section 5.0](#). The project schedule and records availability

information for this CAIP are discussed in [Section 6.0](#), and [Section 7.0](#) provides a list of project references.

## **2.0 Facility Description**

---

### **2.1 Physical Setting**

The DTRSA is an area of disturbed ground located in Stonewall Flat on the Nellis Air Force Bombing Range 71N west of the TTR. The site is approximately 8 km (5 mi) southwest of the Cactus Spring gate at the intersection of the Cactus Spring Road and the Double Tracks Control Point Road. The entire disturbed area is approximately 210 meters (m) by 120 m (700 feet [ft] by 400 ft). The areas of concern are not fenced or posted. The site is bounded by high desert on all sides. The Cactus Spring Road dissects the site into northern and southern halves.

The DTRSA lies near the northern end of Stonewall Flat on an alluvial fan that slopes westward from the Cactus Range. The elevation at the site is approximately 1,658 m (5,440 ft) above sea level (DOE/NV, 1996a). The depth to water below ground surface (bgs) is unknown, but is estimated to be approximately 250 to 270 m (820 to 890 ft) with an estimated general flow direction of southwest (DOE/NV, 1996a).

The site is comprised of disturbed soils with sparse vegetation. The near-surface alluvium at the site has never been studied in detail; however, it is likely to be similar to alluvial fans within the basin and range, consisting of boulders, cobbles and coarse gravel grading to sand typically covered by a thin, fine, loamy soil unit (DOE/NV, 1996a).

Two factors could potentially result in exposure of the buried waste within the areas of concern. Currently, drainage patterns for surface water runoff resulting from significant rainfall events dissect the DTRSA and may represent an exposure hazard in the future. Secondly, the site lies within an active bombing range where wayward artillery may impact the site and potentially expose the areas of concern. These factors will be taken into consideration for future corrective actions.

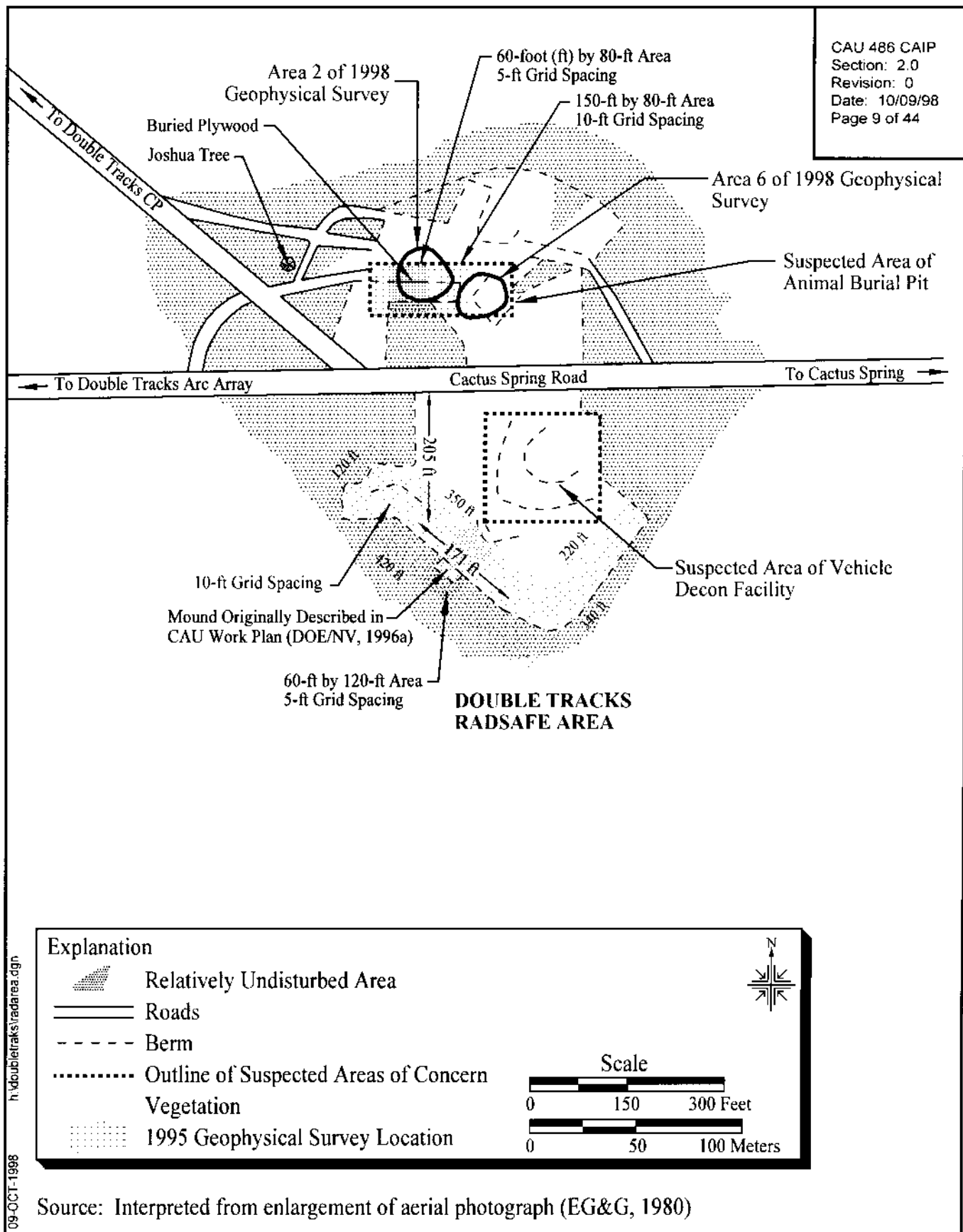
### **2.2 Operational History**

Project Roller Coaster consisted of four noncritical tests of a nuclear device: Double Tracks and Clean Slates 1, 2, and 3. The Clean Slate tests were conducted at Cactus Flat located within the boundaries of the TTR. The Double Tracks test was conducted in Stonewall Flat, approximately

32 km (20 mi) east of Goldfield, Nevada, located on the Nellis Air Force Range (REECo, 1964). The Clean Slate tests used a total of 3 devices containing plutonium and 44 devices without plutonium, containing DU only. The Double Tracks test used a single device containing plutonium and DU and was designed to investigate the characteristics of plutonium-bearing particulate material formed by the nonnuclear detonation of a nuclear weapon. The experiment exposed approximately 300 animals consisting of dogs, sheep, and burros to respirable concentrations of plutonium and uranium to assess the inhalation uptake of these radionuclides (REECo, 1964). Muslin shrouds were used to cover the 300 animals during the detonation to prevent airborne contamination from contacting major portions of the animals' bodies. Immediately following the test, the muslin shrouds were removed from the animals, and approximately 18 of these animals were sacrificed and skinned (Wilson and Terry, 1965).

All facilities associated with the DTRSA operation were removed. Based on available information, the assumed areas of concern at the DTRSA consist of the decontamination facility (vehicle decon pad and decon sump) in the southern half of the DTRSA, and an animal burial pit located in the northern half. Radioactive waste possibly containing other COPCs was discharged and/or buried here as part of the decontamination operations. [Figure 2-1](#) outlines the approximate areal dimensions which will be investigated for the decontamination facility and the animal burial pit.

Available historical information on vehicle and personnel decontamination operations for the DTRSA is limited. These decon operations are assumed to be similar to the Roller Coaster RADSAFE operations (DOE/NV, 1998a). Based on historical photos and documentation, the decontamination facility included a hotline area for doffing anti-contamination clothing and personal protective equipment (PPE); a vehicle decon area consisting of a vehicle decon pad, a sump, and a water tank; and possibly a waste disposal pit. The vehicle decon pad was filled with gravel to serve as a french drain for vehicle decon water. Former site employees indicate that the area associated with the vehicle decon was a bulldozed trench approximately 120 square yards in area (Penwell, 1995). Historic photos suggest the trench may be as wide as 6 to 9 m (20 to 30 ft) and is elongated parallel to Cactus Spring Road. After operations, the gravel associated with the french drain was likely removed and placed in the sump, possibly with other solid waste and contaminated debris resulting from field operations.



**Figure 2-1**  
**Potential Locations for the Areas of Concern at the DTRSA**

Available historical information indicates that animal decontamination activities for the DTRSA included removal of the muslin shrouds used during the test immediately after the animals were retrieved from the test area, skinning the 18 sacrificed animals, and removing exposed limbs of the sacrificed animals (Wilson and Terry, 1965). Reportedly, the doffed shrouds, hides, and amputated limbs were buried in an animal burial pit (Wilson, 1995a, 1995b; Shugart, 1995). This burial pit is believed to be located on the north side of the DTRSA. No information exists about an animal decon pad. The animal burial pit has been described as approximately 2 to 3 m (6 to 10 ft) deep, 1.8 to 2.4 m (6 to 8 ft) wide, and 9 to 12 m (30 to 40 ft) long (Wilson, 1995a).

Although the disturbed area of the DTRSA is clearly discernible at ground-level today, and historically in aerial and surface photos, there is currently little evidence for the exact locations of either the decon facility or the animal burial pit. Both areas have been covered with several feet of clean earth, making identification of the areas of concern difficult. The CAU Work Plan for TTR (DOE/NV, 1996a) describes two potential trench areas where IT Corporation conducted geophysical surveys in 1995 (IT, 1995). The surveyed areas are outlined in [Figure 2-1](#). Through additional photo interpretation, recent geophysical surveys, and physical evidence, only the area on the north side is strongly believed to represent a potential trench area. This area contains the partially exposed plywood and metallic posts at the ground surface and is believed to represent a portion of the animal burial pit (see [Figure 2-1](#)). [Section 2.5](#) offers a more detailed discussion of additional locations identified for both areas.

### **2.3 Waste Inventory**

The length of operations at the DTRSA is unknown but operations were probably of a short duration because the DTRSA only supported the single Double Tracks test. The volumes and types of hazardous waste disposed at the site were not documented; however, the volumes of waste can be assumed to be lower than those disposed of at the Roller Coaster RADSAFE Area (DOE/NV, 1998a) which supported an increased number of tests, personnel, and vehicles associated with Clean Slate tests. Interviews indicate that methyl ethyl ketone (MEK) from the decontamination of facemasks used during the Double Tracks experiment may have been disposed of in one of the DTRSA trenches (Sygitowicz, 1998). Lead-acid batteries are not assumed to be disposed of at the DTRSA, but rather would have been reused during the Clean Slate tests.

## **2.4 Release Information**

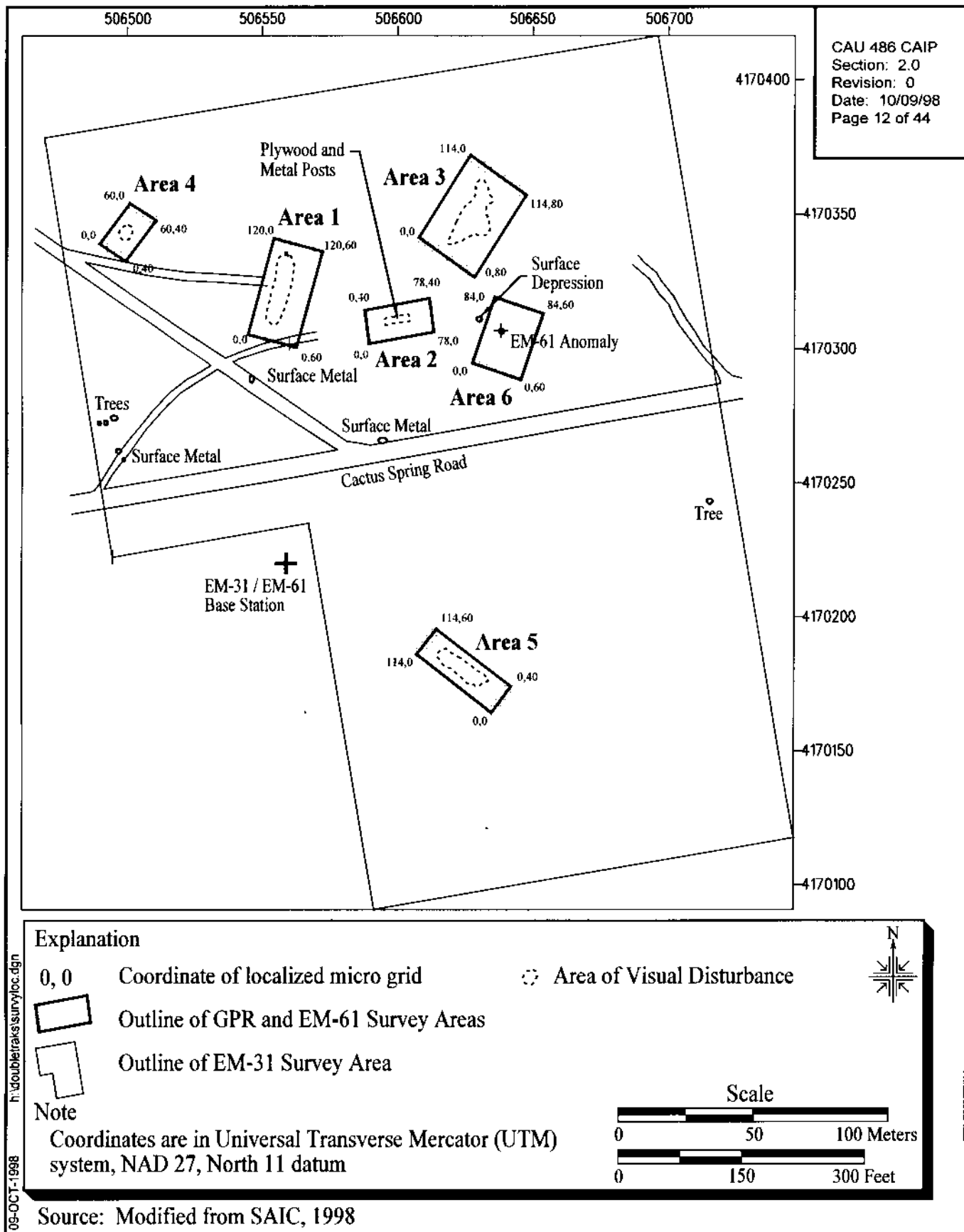
The COPCs were released directly to the soils of the DTRSA as a result of personnel, vehicle, and animal decontamination and waste burial. Subsurface COPCs are a result of direct release to the soil and subsequent migration through natural processes. Migration is assumed to be minor due to the arid climate and high evaporation. Exact quantities of liquids released to the DTRSA are unknown. Interviews indicate that approximately 300 muslin shrouds contaminated with plutonium were most likely buried in the animal burial pit at DTRSA. The exact amount and type of other contaminated debris and solid waste disposed in the sump or animal burial pit are unknown.

## **2.5 Investigative Background**

No surface or subsurface sampling has been conducted at the DTRSA to date. A surface radiological survey of the DTRSA was performed in March 1998 by Science Applications International Corporation (SAIC) for IT Corporation (IT) to identify any locations of surface contamination and show radiological trending information. The results of the survey demonstrate that there is no beta-gamma activity elevated above background on the surface soil of the DTRSA (Adams, 1998b).

Geophysical surveys conducted at the site in 1995 by IT (IT, 1995) included an electromagnetic (EM) and magnetometer survey. A rectangular area of 1,115 square meters ( $\text{m}^2$ ) (12,000 square feet [ $\text{ft}^2$ ]) was surveyed on the north side of the DTRSA. This area corresponds to Area 2 of the 1998 geophysical investigation (Figure 2-1). In addition, an L-shaped area of 6,112  $\text{m}^2$  (65,800  $\text{ft}^2$ ) was surveyed on the south side of the DTRSA. This area corresponds to Area 5 of the 1998 geophysical investigation (Figures 2-1 and 2-2). Based on the geophysical survey results, it is apparent that the southern survey area contains no metallic anomalies or trench-like characteristics. The surveyed area on the north contains excessive interference from the metal posts in the ground such that the presence of buried material could not be identified.

Additional geophysical investigations (SAIC, 1998) were conducted by SAIC for IT in March 1998. The geophysical investigation included an EM-31 survey over the entire disturbed area of the DTRSA covering approximately 59,450  $\text{m}^2$  (640,000  $\text{ft}^2$ ). Areas with the visual appearance of disturbance and areas of EM-31 anomalies were further evaluated using ground-penetrating radar (GPR) and a high resolution metal detector (EM-61). Figure 2-2 is a geophysical survey location



**Figure 2-2**  
**Double Tracks RADSAFE Area 1998 Geophysical Survey Location Map,**  
**Nellis Range 71N, Nye County, Nevada**

map of the DTRSA and relative cultural features identified during the 1998 surveys. The figure depicts both the EM-31 survey area and the six localized GPR and EM-61 survey areas.

The EM-31 survey revealed only one anomaly located within the suspect area of the animal burial pit. This area is not associated with any type of surface disturbance thought to be related to excavation or disposal. The partially exposed plywood and metal posts did not register as an anomalous area due to a weak signal on the EM-31.

The GPR and EM-61 surveys, conducted on the six localized areas, identified significant anomalies in Areas 2 and 6 only ([Figures 2-2 and 2-3](#)). Area 2 corresponds to the partially exposed plywood and metal posts visible at the ground surface. Interpretation of GPR data suggests that the depth of disturbed soil in Area 2 is less than 2 m (6 ft). Area 6 corresponds to the anomaly identified by the EM-31 survey. Area 6 GPR data ([Figure 2-4](#)) suggests that disturbed soil/buried material appears to reach a depth of 3 m (10 ft). The shape of the GPR anomaly boundary suggests an excavation and exhibits reflector patterns similar to those found in landfill settings. Both Area 2 and Area 6 will be investigated as possible locations of the animal burial pit as shown on [Figure 2-1](#). Although surface debris exists at Area 2 to suggest the presence of a buried trench, and reflector patterns in the Area 6 GPR data resemble, and are interpreted as landfill setting reflector patterns, the possibility exists that the Area 2 and 6 anomalies may be buried ordnance associated with historic and current activities of the bombing range.

Due to the lack of surface expression and geophysical evidence, locating the vehicle decon pad and sump required evaluation of other sources of information. Those sources included the review of historical documentation, interviews with former site workers, and inspection of historic photographs (i.e., surface and aerial photographs). Based on these sources, it is believed the vehicle decon area was situated, at a minimum, 9 m (30 ft) south of the Cactus Spring Road to allow room for the personnel decon area. The long axis of the vehicle decon area was oriented parallel to the Cactus Spring Road and had a width of approximately 6 to 9 m (20 to 30 ft). An area interpreted as representing the approximate location of the vehicle decon pad and sump is shown in [Figure 2-1](#).

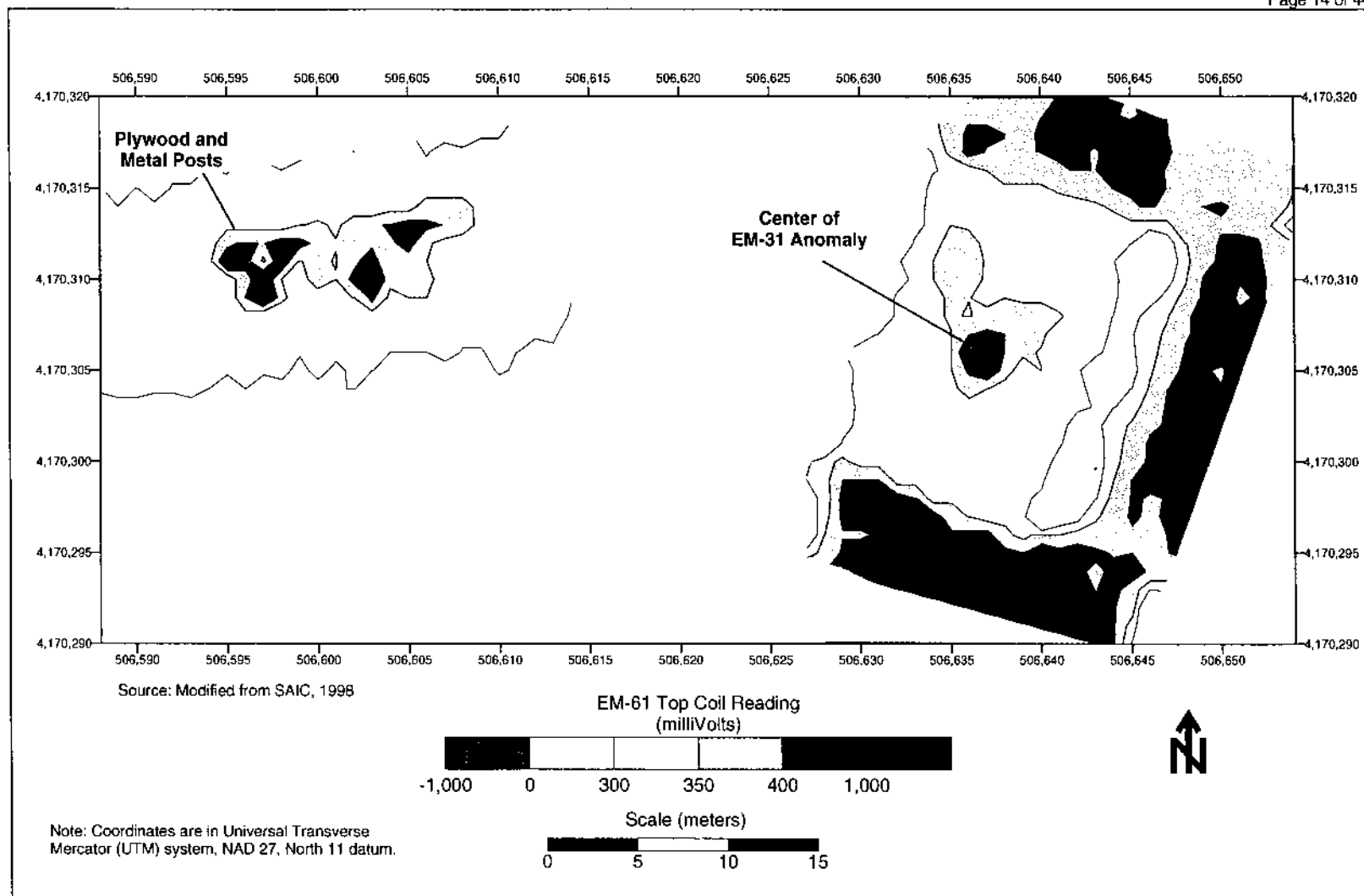
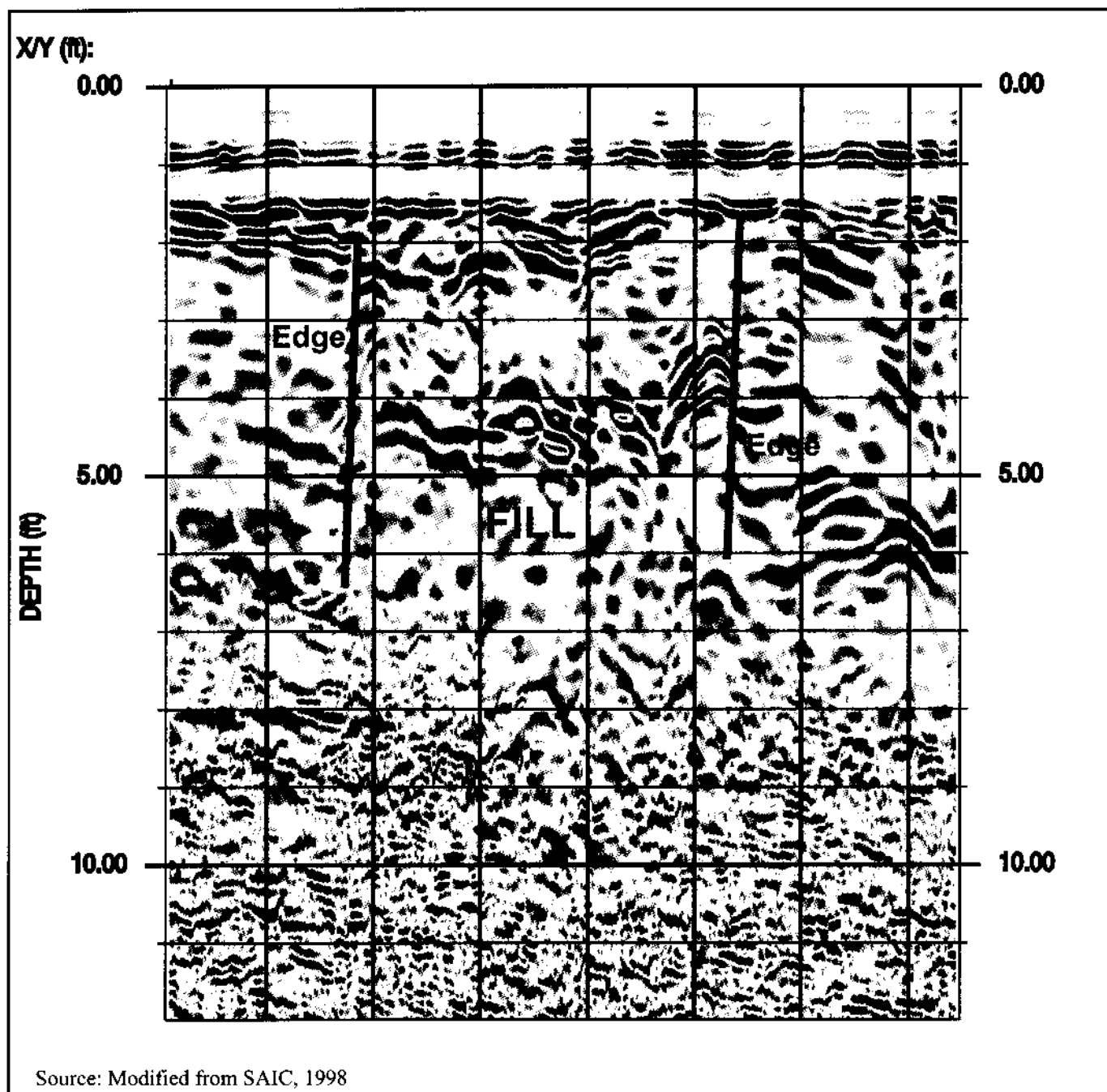


Figure 2-3  
 EM-61 Survey For Area 2 and Area 6 at the DTRSA



Refer to Figure 4-2 for location of traverse lines in Area 6.

**Figure 2-4**  
Area 6 Ground Penetrating Radar (GPR) Anomaly  
DTRSA, Range 71N, Nye County, Nevada

## **2.6    *National Environmental Policy Act (NEPA) Requirements***

In accordance with the DOE/NV NEPA compliance program, a NEPA checklist shall be completed prior to commencement of site investigation activities at CAU 486. This checklist compels DOE/NV projects to evaluate their proposed project against a list of several potential environmental impacts. These include, but are not limited to, air quality, chemical use, waste generation, noise level, and land use. Completion of the checklist results in a determination of the appropriate level of NEPA documentation by the DOE/NV NEPA Compliance Officer.

## **3.0 Objectives**

---

The DQOs are qualitative and quantitative statements that specify the quality of the data required to support potential courses of action for the DTRSA. The DQOs were developed to clearly define the purposes for which environmental data will be used and to design a data collection program that will satisfy these purposes. One element of the DQO process is the formulation of a conceptual site model.

### **3.1 Conceptual Site Model**

The conceptual site model defines the expected nature and extent of contamination at the DTRSA. The conceptual site model for the DTRSA is based on assumptions formulated on information presented in [Section 2.0](#) and discussed during the DQO process. The model is used to identify appropriate sampling strategy and data collection methods. The conceptual site model and assumptions for the DTRSA developed in the DQO process are presented in [Appendix A](#) and are summarized as follows:

- Well-defined trench locations and boundaries for the decon facility and the animal burial pit are unknown. Historical investigations indicate that the vehicle and personnel decon area were located in the southern half of the DTRSA while the animal burial pit was located in the northern half.
- COPCs primarily associated with decon fluids were released into the soil at the decon facility (i.e., vehicle washdown pad and sump trench).
- COPCs in solid form (i.e., contaminated materials) were released into the soil primarily at the animal burial pit.
- Post-shot radionuclide concentrations measured on the animal wagons stationed on the arcs are low (microgram quantities) (Wilson, 1995b). These concentrations are assumed to be worst case for radiological contamination at both the decon facility and animal burial pit.
- Lateral migration of COPCs is limited to within the trench dimensions.
- Vertical migration of COPCs is limited to less than 6 m (20 ft) from the ground surface or 3 m (10 ft) from bottom of trench.

- Original test device contained plutonium in metal form and depleted uranium reportedly in the form of oxides (Adams, 1998a).
- Plutonium and depleted uranium contamination are expected to be in the form of oxide, mixed oxides, silicates, carbides, and carbonates (Perry et al., 1966; Sherwood, 1966).
- Intrusion by U.S. Air Force personnel working on range may be a hazard because the site is not posted with signs or restricted by fences. Because of this, the potential for exposure to personnel from contaminated soil or buried waste exists.
- Environmental conditions (i.e., arid climate) and depth to groundwater (250 to 270 m [820 to 890 ft]) at the site make impact to groundwater by downward migration of COPCs highly unlikely.
- Current drainage patterns on the alluvial fan surface dissect parts of the DTRSA in which the areas of concern trenches are believed to exist. Because of this, there is a potential for surface water runoff to expose buried waste, if present, during significant rainfall events.

### **3.2 Contaminants of Potential Concern**

Based on process knowledge, COPCs at the DTRSA are believed to consist of plutonium, depleted uranium, volatile organic compounds (VOCs), semivolatile organic compounds (SVOCs), total petroleum hydrocarbons (TPH), and metals. Pesticides, polychlorinated biphenyls (PCBs), and radionuclides other than plutonium and depleted uranium are not expected at the DTRSA.

### **3.3 Preliminary Action Levels**

Field screening levels for on-site field screening methods and preliminary action levels for off-site analytical methods will be used to determine the presence of contamination.

#### **3.3.1 Field Screening Levels**

The following field screening levels will be used for on-site field screening methods:

- Volatile organic compound headspace screening levels are established at 20 parts per million (ppm) or 2.5 times background, whichever is greater.
- Total petroleum hydrocarbon screening levels are greater than 100 ppm.

- Radiation (alpha and beta/gamma) screening is the mean background activity level plus two times the standard deviation of the mean background activity level (to be determined prior to start of field activities).

Details of the methodology to determine the radiological field screening levels can be found in [Table A.3-1](#) and [Attachment 2](#) of the DQO worksheet ([Appendix A](#)).

Concentrations exceeding field screening levels indicate potential contamination at that sample location. This information will be documented, and the investigation will be continued to delineate the extent of the contamination. Additionally, this data may also be used to select discretionary laboratory sample locations.

### **3.3.2 Chemical Preliminary Action Levels**

Off-site laboratory analytical results will be compared to the following preliminary action levels to evaluate the need for possible corrective actions:

- NDEP Corrective Action Regulations (NAC, 1996a)
- TPH concentrations above the TPH limit of 100 ppm per the Nevada Administrative Code (NAC) 445A.2272 (NAC, 1996a)

The comparison of laboratory results to preliminary action levels will be discussed in the Corrective Action Decision Document (CADD). Laboratory results above action levels indicate the presence of COPCs at levels that may require corrective action. The evaluation of potential corrective actions and the justification for a preferred action will be included in the CADD based on the results of this field investigation.

### **3.3.3 Radiological Preliminary Action Levels**

The preliminary action levels for radioactive contaminants of potential concern will be defined in accordance with the guidance described in the Multi-Agency Radiation Survey and Site Investigation Manual (MARSSIM) (NRC, 1997). The MARSSIM provides detailed guidance for designing, conducting, and documenting radiological surveys. MARSSIM provides guidance on how to evaluate survey results prior to making a decision regarding whether or not the radionuclide concentration at a site exceeds the concentration in a background area. The assumption will be made

that any difference in the distribution of the radionuclide concentrations between the background area and the areas of concern within the DTRSA is due to the presence of residual radioactivity in addition to background. As stated in Section 8.4.1 of MARSSIM, some DTRSA analytical results may be larger than some background area results, while still not exceeding background concentrations. The result of the hypothesis testing determines whether or not the areas of concern within the DTRSA are deemed to exceed the background area.

The evaluation of potential corrective actions and the justification for a preferred action will be included in the CADD based on the results of this field investigation.

### **3.4 DQO Process Discussion**

Details of the DQO process are presented in [Appendix A](#). The DQO results indicated the need for excavation activities prior to sampling to locate the boundaries of the areas of concern. The DQO results indicated the need for biased sampling for the animal burial pit. The biased sampling approach will also be applied to the decontamination facility, only if the boundaries can be identified through preliminary excavation activities; otherwise, a systematic random sampling approach for collecting confirmatory samples will be implemented. Due to the potential subsurface migration of COPCs, an investigation consisting of subsurface sampling was identified. The COPCs, analytical methods, and reporting limits prescribed through the DQO process are provided in [Table 3-1](#).

The precision and accuracy requirements are those stated in EPA Contract Laboratory Program Statements of Work (EPA, 1994a; 1994b; 1994c). The sampling size and design and analytical results will be used to defend or refute the conceptual model.

**Table 3-1**  
**Laboratory Analytical Requirements**

Analyte	Medium <sup>a</sup>	Analytical Method	Minimum Reporting Limit <sup>b</sup>	Precision (RPD)	Accuracy (%R)
Total VOCs	Water	8260B <sup>c</sup>	Analyte-specific estimated quantitation limits <sup>d</sup>	14	60-132
	Soil			24	59-172
Total SVOCs	Water	8270C <sup>c</sup>	Analyte-specific estimated quantitation limits <sup>d</sup>	50	5-230
	Soil			50	11-142
Total RCRA Metals Arsenic Barium Cadmium Chromium Lead Mercury Selenium Silver	Water	6010B/7470A <sup>c</sup>	10 µg/L 200 µg/L 5 µg/L 10 µg/L 3 µg/L 0.2 µg/L 5 µg/L 10 µg/L	20	75-125
Total RCRA Metals Arsenic Barium Cadmium Chromium Lead Mercury Selenium Silver	Soil	6010B/7471A <sup>c</sup>	1 mg/kg 20 mg/kg 0.5 mg/kg 1 mg/kg 0.3 mg/kg 0.1 mg/kg 0.5 mg/kg 1 mg/kg	20	75-125
TPH	Water (gasoline)	8015B modified <sup>c</sup>	1 mg/L	20	25-145
	Water (diesel)		1 mg/L	20	25-145
	Soil (gasoline)		1 mg/kg	30	30-130
	Soil (diesel)		30 mg/kg	30	30-130
Isotopic Plutonium	Water	NAS-NS-3058 <sup>e</sup>	2 pCi/L	20	80-120
	Soil	NAS-NS-3058 <sup>e</sup>	0.5 pCi/g	20	80-120
Isotopic Uranium (U <sup>238</sup> )	Water	NAS-NS-3050 <sup>e, f, g</sup>	2 pCi/L	20	80-120
	Soil		1 pCi/g	20	80-120

<sup>a</sup>QC (water) samples area included in table

<sup>b</sup>Industrial Sites Quality Assurance Project Plan (DOE/NV, 1996d)

<sup>c</sup>EPA Test Methods for Evaluating Solid Waste, 3rd Edition, Parts 1-4, SW-846 (EPA, 1996)

<sup>d</sup>Estimated Quantitation Limit (EQL) as given in SW-846, U.S. EPA (EPA, 1996)

<sup>e</sup>National Academy of Science, Nuclear Science Series, September 1963

<sup>f</sup>Separation and Preconcentration of Uranium from Acidic Media by Extraction Chromatography (Horwitz et al. 1992)

<sup>g</sup>Separation and Preconcentration of Actinides from Acidic Media by Extraction Chromatography (Horwitz et al. 1993)

mg/kg = Milligram(s) per kilogram

pCi/L = Picocurie(s) per liter

mg/L = Milligram(s) per liter

pCi/g = Picocurie(s) per gram

µg/L = Microgram(s) per liter

RCRA = Resource Conservation and Recovery Act

## **4.0 Field Investigation**

---

This section of the CAIP contains the sampling approach for investigating the DTRSA. All sampling activities will be conducted in compliance with the Industrial Sites QAPP (DOE/NV, 1996d) and other applicable, approved procedures. Quality assurance and quality control requirements for field and laboratory environmental sampling are also contained in the Industrial Sites QAPP (DOE/NV, 1996d) and in [Table 3-1](#).

The field investigation at the DTRSA will consist of two phases. The first phase will involve excavation activities to delineate the boundaries of the decontamination facility (i.e., vehicle decon pad and sump) and the animal burial pit (details provided in [Section 4.2](#)). The second phase will involve drilling boreholes and collecting environmental samples at selected sites within the DTRSA based on data collected during the excavation phase (details provided in [Section 4.3](#)).

Field activities will be performed in accordance with an approved SSHASP; which concurs with the DOE Integrated Safety Management System. Safety, health, and protection of the environment take precedence over expediency and short cuts. Site personnel will take every reasonable step to reduce the possibility of injury, illness, or accidents, and to protect the environment during all project activities. The following will be taken into consideration when accessing the hazards associated with the field activities:

- Potential hazards to site personnel (plutonium, DU, heavy equipment, VOCs, rapidly changing weather, remote location, ordnance)
- Proper training of personnel to mitigate the anticipated hazards
- Engineering controls, where feasible, to reduce exposures
- Work controls to reduce hazards
- Monitoring for VOCs and radioactivity performed to minimize and control potential personnel exposures
- Exposures to be kept as low as reasonably achievable (ALARA)
- Communications (remote location)

#### **4.1 Technical Approach**

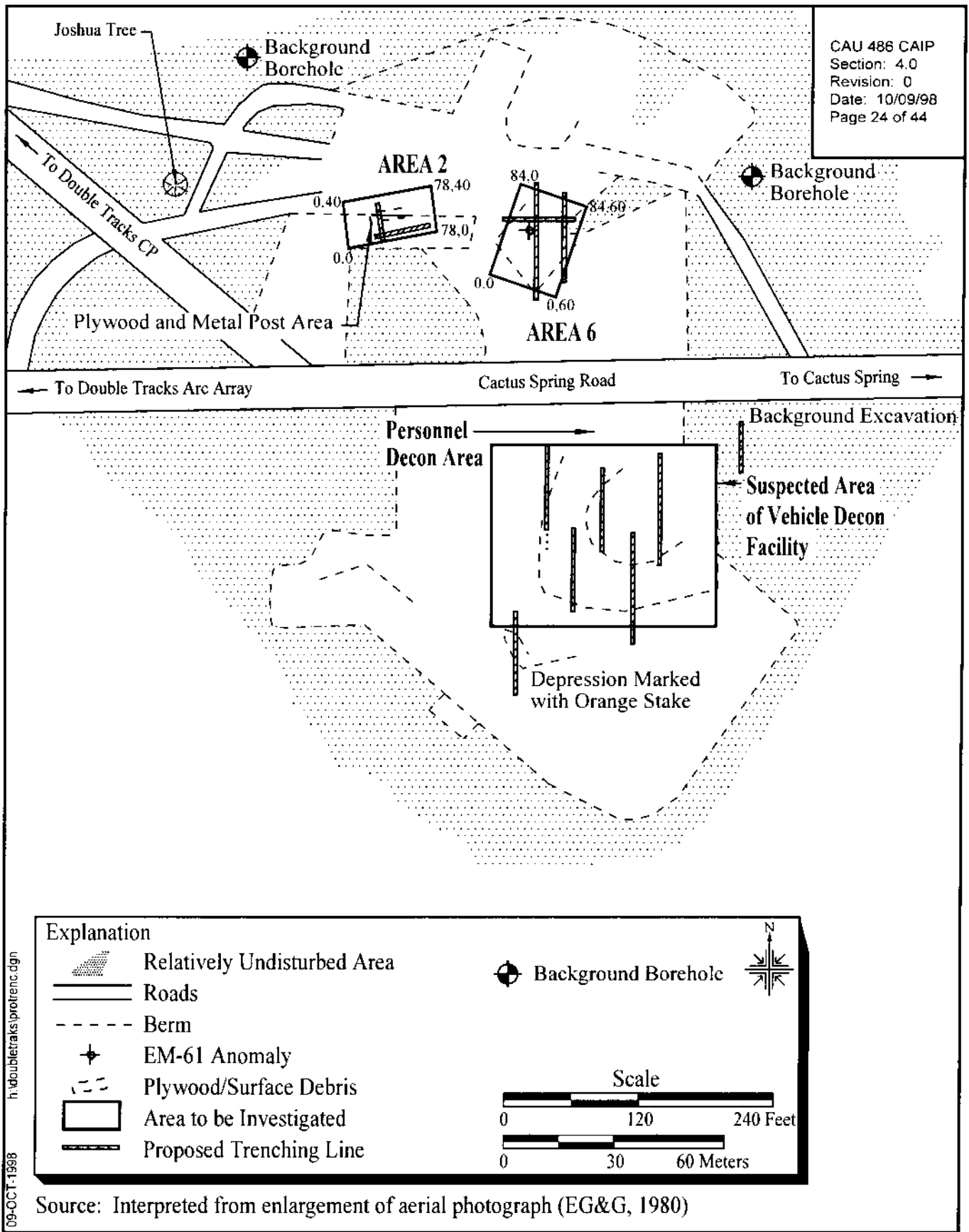
The following activities will be conducted during the site investigation:

- Excavate test pits to identify and verify the boundaries of the decon facility and the animal burial pit.
- Drill a minimum of two boreholes per identified area of concern to investigate the presence and extent of subsurface COPCs at the suspected location of the animal burial pit.
- If the boundaries of the decon facility are identified, drill a minimum of one borehole per identified area of concern (i.e., sump, decon pad) to investigate the presence and extent of subsurface COPCs.
- If the boundaries of the decon facility are not identified, collect confirmation samples based on field screening levels and visual observations.
- Drill two boreholes for the collection of background samples and to record subsurface geological conditions; and excavate one background test pit to record subsurface geological conditions.
- Drill step-out borings as needed to evaluate the lateral and vertical extent of COPCs.

Field screening and environmental sampling will be conducted during the investigation, and the results will be used during the corrective action decision process. In the following sections, the elements of the field investigation are described in greater detail.

#### **4.2 Excavation Activities**

The first phase of the field investigation will consist of excavating trenches/test pits along a defined line in an attempt to identify and delineate the boundaries of the decon facility and the animal burial pit. Locating the trench boundaries is imperative to placing soil borings in areas most likely to encounter COPCs. A description of phase one activities and a decision diagram were discussed in the DQO process and details are available in [Section A.7.0 of Appendix A](#). Through investigative methods previously discussed in [Section 2.5](#), several proposed trenching lines have been identified for potential excavation in both the northern and southern halves of the DTRSA. [Figure 4-1](#) shows the approximate locations of areas to be excavated. These areas may be altered at the discretion of the Site Supervisor during the field investigation.



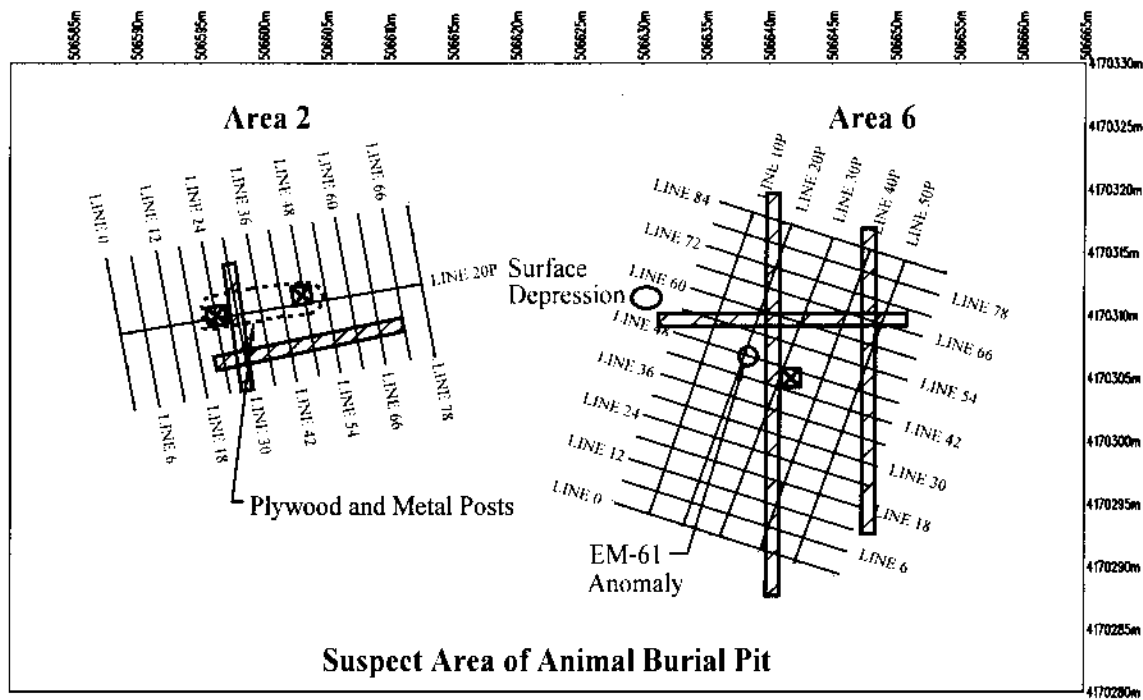
**Figure 4-1**  
**Proposed Trenching Lines**

In general, excavation activities will consist of using a backhoe to excavate trenches or test pits to an approximate depth of 1.5 m (5 ft) and a maximum length of 6 m (20 ft). The excavations will progress down the proposed trenching lines as shown in [Figure 4-1](#) and [Figure 4-2](#), at 1.5 to 3 m (5 to 10 ft) intervals until a boundary has been identified or the line is completed. Identifying the site boundaries will be conducted by visual assessment of soil characteristic changes (i.e., gravel layer, fill material/native soil interface) including the observation of trash or debris within the test pit, and through field screening for VOCs and radionuclides. If a north-south trench boundary is identified, then linear step-outs will be excavated to identify and delineate the east-west boundary of the trench. Based on historical information, excavating to a depth of 1.5 m (5 ft) should be sufficient for encountering evidence of the trenches.

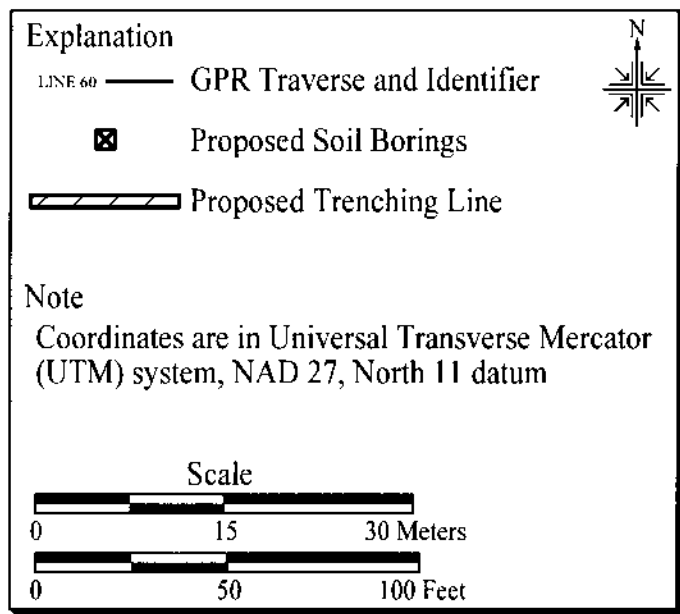
The possibility exists that the Area 2 and 6 anomalies ([Figure 2-3](#) and [Figure 4-2](#)) may be buried ordnance associated with historic and current activities at the bombing range. Health and safety precautions pertaining to buried ordnance will be in place during the field investigation activities at both the Area 2 and Area 6 anomalies. A minimum of one Unexploded Ordnance (UXO) specialist will be present during trenching activities at these anomalies. The UXO specialist will survey the excavation area prior to and during excavation activities to verify the proximity to buried metallic objects and identify whether the buried object may be ordnance based on the results of their field survey. The UXO specialist will use a metal/ordnance detector (i.e., a Schonstedt magnetometer or a Foerster Ferex Ordnance Locator) for conducting their surveys.

In the case that a buried ordnance is located, excavation activities at that location will stop and the situation evaluated. If it is safe to continue activities at a different area (either an anomaly or the area south of the road) then activities will move to the other location and a decision regarding the ordnance will be made based on the findings at the remaining anomaly/areas (i.e., the trench is identified and the ordnance requires removal/demilitarization prior to site closure). Additional health and safety precautions pertaining to buried ordnance will be discussed in more detail in the SSHASP for this project.

In the event the decon facility trench boundaries cannot be delineated by visual assessment and field screening results are below field screening levels, then two consecutive clean soil samples will be collected from random excavated test pits for off-site laboratory analysis to confirm COPCs are



Refer to Figure 4-1 to see Area 2 and Area 6 relative to cultural features at the DTRSA



Source: Modified from SAIC, 1998

**Figure 4-2**  
**Area 2 and Area 6 Geophysical Traverse Location Maps**  
**with Potential Soil Boring Locations**

below preliminary action levels. These samples will be analyzed for the constituents listed in [Table 3-1](#). This will eliminate drilling unnecessary boreholes for confirmatory samples. In the case elevated readings above preliminary action levels are obtained from confirmatory samples, subsurface investigation will be performed as described in [Section 4.3](#) at these locations. Random sample locations will be determined from grid cells imposed over the surface of a defined area. The grid method would allow sampling that could statistically demonstrate that the contamination does not exist or is below preliminary action levels.

The DQO process ([Appendix A](#)) uses Equation 8 in Chapter 9 of SW-846 (see [Section A.6.0](#)) to define the sampling grid and number of samples necessary to verify that COPCs are below preliminary action levels. Since this equation applies the student t value which assumes normal distribution of contaminants, it may not always be applicable to this investigation. The distribution of COPCs, especially plutonium, is rarely normally distributed. Therefore, as an alternative to Equation 8 in Chapter 9 of SW-846, the number of samples to be collected may be calculated using the guidance in Section 9 of NUREG 1505 (Gogolak et al., 1998).

A background trench/test pit will be excavated on the alluvial fan surface near the DTRSA to assess and record undisturbed subsurface geological conditions. This background data will be useful in comparing subsurface geological conditions and identifying fill material/native soil interfaces for phase one activities at the DTRSA.

Excavated soil will be used to backfill the location of removal. During excavation, soil will be stockpiled on plastic sheets as near the excavation as safely possible. The soil will be excavated and stockpiled in layers. The layers will be returned to the excavation hole in the opposite order as they were removed in an expedient manner. This process will help control the potential spread of any COPCs while considerably reducing the amount of potentially-contaminated media requiring management at the site, and reducing associated costs.

### **4.3 Subsurface Sampling**

The second phase of the field investigation will consist of drilling boreholes and collecting environmental samples. The number and placement of soil borings required to define the subsurface conditions will be determined at the completion of the first phase (excavation activities). Borings will

be placed in biased locations within the identified trench boundaries (i.e., along the linear axis, near metallic anomalies, or physical evidence at the surface) in areas most likely to encounter COPCs. Potential boring locations for the animal burial pit, based only on geophysical and physical evidence gathered to date, are shown on [Figure 4-2](#). Potential boring locations for the decon facility will be determined based on delineation of the facility boundaries in phase one activities. If facility boundaries are not identified then confirmation samples will be collected from random test pit locations as discussed in [Section 4.2](#).

Borings will be advanced in 1.5-m (5-ft) intervals starting from the ground surface to a minimum depth of 6 m (20 ft) bgs. These borings should adequately bound potential vertical contamination at the site. If two consecutive, nondetect field screening readings are not obtained above a depth of 6 m (20 ft) bgs, drilling and field screening will continue at 1.5-m (5-ft) intervals until two consecutive, nondetect field screening readings are obtained. [Section 4.3.1](#) provides additional details on field screening methods.

Step-out borings may be drilled to further delineate the lateral and vertical extent of COPCs. The location and depth of proposed step-out borings will be based on the results of the initial borings and at the discretion of the Site Supervisor, and will be drilled in the same manner as the initial borings.

Sonic drilling or another appropriate drilling method will be used to advance the boreholes. The drilling method will meet the following requirements:

- Provide continuous core for environmental sample collection and geologic description; and to allow the fill material and native soil interface depth to be determined.
- Provide high-quality, relatively undisturbed samples.
- Allow reasonable drill rates and penetration of substantial gravel fill and most solid waste.
- Limit the volume of investigation-derived waste (IDW).

#### **4.3.1 Field Screening**

The field-screening methods include radiological screening using instruments such as a field instrument for the detection of low energy radiation (FIDLER) to detect low energy gamma, and an Electra for alpha and beta emitters. Headspace testing for VOCs will use a photoionization detector.

Field screening for radioactivity and VOCs will be conducted on samples of soil excavated from the test pits and will provide an additional investigative tool in identifying the decon facility and animal burial pit by identifying areas where COPC concentrations exceed field screening levels. If field screening results exceed the field screening levels listed in [Section 3.3](#), excavation activities will stop for that test pit and the results and location recorded. Field screening will be performed at the midway point and bottom of the test pit, or at the discretion of the Site Supervisor.

Field screening for radioactivity and VOCs will also be conducted for all soil borings and will provide information to establish the required maximum drilling depth for each borehole and the need for step-out borings. If field-screening results exceed the field screening levels listed in [Section 3.3](#), drilling will continue until two consecutive results below these levels are obtained. Field screening will be performed at approximately 0.76-m (2.5-ft) intervals to around 6 m (20 ft) bgs for all borings. If drilling continues beyond this depth, field screening will continue in 1.5-m (5-ft) intervals to total depth.

Field-screening data will serve three purposes. First, the data will provide semiquantitative measurement of the subsurface conditions. Second, the data will provide a mechanism for guiding both depth and lateral extent of the investigation. Third, the data will be used to aid the selection of samples to be submitted for laboratory analysis.

#### **4.3.2 Sampling Criteria**

Environmental samples will be collected in approximately 1.5-m (5-ft) intervals beginning at the surface and continuing for the entire length of each boring. The bottom two samples with nondetect field screening results will be submitted for laboratory analysis to bound the vertical extent of contamination and verify field-screening results for each individual boring. Additionally, a sample from the interval with the highest field-screening measurement will be submitted for laboratory analysis. Samples submitted to the laboratory will be analyzed in accordance with [Table 3-1](#).

To better delineate potential vertical migration beneath the trench, an increased sampling frequency will be used for the first five-foot interval from the interface between the fill material and the native soil (assuming it can be identified), as core recovery allows, up to 0.3-m (1-ft) intervals and up to five samples. These samples will be field screened, sent to the laboratory, and analyzed for radionuclides

only. This interface should be apparent in the boring through the vehicle decontamination pad, but may be difficult to recognize in borings penetrating features where no gravel was present (i.e., animal burial pit) or was removed (i.e., hotline). If this interface is difficult to recognize, the increased sampling interval will be used from the anticipated interface for each individual sampling site to obtain vertical definition of COPC extent to support evaluation in the CADD. Additional samples may be collected at the discretion of the Site Supervisor.

All equipment which contacts soil to be sampled will be decontaminated in accordance with written and approved procedures consistent with the Environmental Restoration Division Procedure ERD-05-701, "Sampling Equipment Decontamination," Rev. 1 (DOE/NV, 1998c), or as appropriate for special equipment being decontaminated (i.e., decontaminating core barrels). Core barrels will be decontaminated prior to each sampling event and between boreholes to minimize the potential for cross-contamination of samples from different sample locations or depths.

Environmental samples collected for laboratory analysis will be samples of fresh (unused) media. Samples will be collected with highest priority given to those that will be analyzed for VOCs. When volatilization of COPCs is not a concern, the soil will be homogenized and the samples will be collected with priority given to those with the shortest hold times prior to analysis.

The analytes, analytical methods, and associated quality control ranges for precision and accuracy measurements of samples submitted to the laboratory are specified in [Table 3-1](#). Records will be maintained for a visual classification of the soil, field-screening measurements, and all other relevant data. Pertinent and required sampling information (e.g., date, time, sample interval) will be documented in accordance with the Industrial Sites QAPP (DOE/NV, 1996d). Approved chain of custody procedures will be followed to assure data defensibility (DOE/NV, 1998b).

#### **4.4 Quality Control Samples**

Quality control samples will be collected as required by the Industrial Sites QAPP (DOE/NV, 1996d). These samples will include trip blanks, equipment blanks, field blanks, field duplicates, and matrix spike/matrix spike duplicate (MS/MSD) samples. Except for trip blanks, all QC samples will be analyzed for applicable parameters in [Table 3-1](#). Trip blanks will only be analyzed for VOCs. One set of QC samples will be collected for every twenty (or fraction of twenty) environmental

characterization samples submitted to the laboratory. Additional QC samples may be submitted at the discretion of the Site Supervisor.

#### **4.5    *Background Samples***

Background samples will be collected from two background boreholes drilled north and northeast of the DTRSA ([Figure 4-1](#)) in areas not known to have been disturbed by Double Tracks operations. The locations are upslope and upgradient of the DTRSA. The Double Tracks testing was conducted to the west of the DTRSA. These boreholes will be drilled and samples will be collected at 1.5 m (5 ft) intervals in the same manner as the boreholes described in [Section 4.3](#) of this CAIP. Background information will be used to evaluate data for use in the CADD and in the dose and risk assessment to support the corrective action at this site.

#### **4.6    *Geotechnical Samples***

In addition to environmental samples, geotechnical samples will be collected from both the fill material above the original DTRSA operational features (e.g., gravel vehicle decontamination pad, animal burial pit) and in the native soil directly beneath the fill material/native soil interface. A minimum of one pair of geotechnical samples will be collected per area of concern. Analysis of geotechnical parameters listed in [Table 4-1](#) will be performed by an off-site, fixed-base laboratory. The methods shown are minimum standards and other equivalent or superior testing methods may be used.

**Table 4-1**  
**Geotechnical Analyses**

Geotechnical Parameter	Methods
Initial moisture content	ASTM <sup>a</sup> D 2216-92
Dry bulk density	ASTM <sup>a</sup> D 2937-94
Calculated porosity	EM <sup>b</sup> -1110-2-1906 or MOSA <sup>c</sup> Chp. 18
Saturated hydraulic conductivity	ASTM <sup>a</sup> D 2434-68(74) MOSA <sup>c</sup> Chp. 28
Unsaturated hydraulic conductivity	van Genuchten <sup>d</sup>
Particle-size distribution	ASTM <sup>a</sup> D 422-63(90)
Water-release (moisture retention) curve	MOSA <sup>c</sup> Chp. 26 ASTM <sup>a</sup> D 2325-68(94) MOSA <sup>c</sup> Chp. 24 Karanthanas and Hajek <sup>e</sup>

<sup>a</sup>ASTM, 1996

<sup>b</sup>USACE, 1970

<sup>c</sup>MOSA, 1986 (Soil Science Society of America)

<sup>d</sup>van Genuchten, 1980

<sup>e</sup>Karanthanas and Hajek, 1982

## **5.0 Waste Management**

---

Management of IDW will be based on regulatory requirements, field observations, process knowledge, and the results of laboratory analysis of DTRSA investigation samples. Decontamination activities will be performed according to approved contractor procedures specified in the contractor field sampling instructions and as appropriate for the COPCs likely to be identified at the DTRSA.

Waste other than soil is potentially contaminated waste only by virtue of contact with potentially contaminated media. Therefore, sampling and analysis of IDW, separate from analyses of site characterization samples, will not be required. The data generated as a result of site characterization and process knowledge will be used to assign the appropriate waste type (i.e., sanitary, hazardous, low-level radioactive waste [LLW], or mixed) to the IDW with the exception noted in [Section 5.3](#).

Sanitary, hazardous, radioactive, and/or mixed waste, if generated, will be managed and disposed of in accordance with U.S. Department of Energy (DOE) Orders, U.S. Department of Transportation (DOT) regulations, *Resource Conservation and Recovery Act* (RCRA) regulations, “Nevada Revised Statutes” (NAC, 1996b), and agreements and permits between the DOE and NDEP.

In the following sections, operational requirements are provided for managing sanitary, hazardous, low-level radioactive, and mixed wastes. However, when the waste is initially generated, the waste will be managed according to mixed waste requirements until laboratory analyses are received and a final waste determination is made.

### **5.1 Waste Minimization**

Corrective action investigation activities have been planned to minimize IDW generation. Decontamination activities are planned to minimize the use of rinsate; decontamination materials will consist of detergent, water, and wipes. Waste, such as disposable sampling equipment, decon rinsate, and PPE will be segregated to the greatest extent possible to minimize the generation of hazardous, radioactive, and/or mixed waste.

## **5.2 Potential Waste Streams**

Historical records and process knowledge indicate that MEK was used to clean respirators and the associated wipes may have been disposed of in the trenches at the DTRSA. If MEK contamination is confirmed the associated waste will be considered to be “listed waste” if other waste regulated by RCRA are identified they will be considered to be “characteristic.” Wastes generated during the investigation activities will include the following:

- Potentially contaminated disposable sampling equipment (such as plastic, paper, sample containers, aluminum foil, spoons, scoops, and bowls) and PPE
- Decontamination rinsate
- Potentially contaminated soil

The waste will be managed in three waste streams; additional segregation will occur within each waste stream based on sample location. Waste will be traceable to its source and to individual samples.

## **5.3 Investigation-Derived Waste Management**

To allow for the segregation of radioactive and nonradioactive waste and materials, radiological swipe surveys may be conducted on reusable sampling equipment and the PPE and disposable sampling equipment waste streams exiting from within the controlled area. Removable contamination limits, as defined in Table 2-2 of the DOE/NV *NV/YMP Radiological Control Manual* (DOE/NV, 1996c), shall be used to determine if such materials may be declared nonradioactive. Due to safety considerations including winter road conditions and ongoing activities at the Nellis Air Force Range, waste will be transferred to a radioactive materials area at the TTR and temporarily stored in accordance with 40 CFR 262.34 (CFR, 1997a). It is anticipated that this transfer will be performed when field activities are complete. Once a radiological or nonradiological disposition has been made for a particular waste stream, a sanitary or hazardous waste disposition will be made. The final disposition of such wastes will be determined by evaluating the analytical results of acquired soil samples. Management requirements for sanitary, low-level, hazardous, or mixed wastes are discussed further in the following sections.

### **5.3.1 Sanitary Wastes**

Sanitary waste generated outside the controlled area will be contained in plastic bags and will be transported to a solid waste management unit. Sanitary waste generated within the controlled area will be swiped to determine if the removable contamination is under the limits defined in Table 2-2 of the *NV/YMP Radiological Control Manual* (DOE/NV, 1996c). Analytical results from the swipe surveys will be used to determine if removable materials will be declared nonradioactive, and analytical results from soil sampling will be used to determine if the materials will be declared sanitary.

### **5.3.2 Low-Level Radioactive Waste**

Low-level radioactive waste, if generated, will be managed in accordance with the contractor-specific waste certification program plan and the *Nevada Test Site Waste Acceptance Criteria* (NTSWAC) (DOE/NV, 1997). Waste drums containing soil, PPE and disposable sampling equipment, and rinsate (when full) shall be staged at a designated Radioactive Material Area pending certification and disposal under NTSWAC requirements (DOE/NV, 1997). Waste drums shall be labeled “Radioactive Material Pending Analysis.” All drums shall be locked or fitted with tamper-indicating devices (TIDs). Traceability shall be maintained by assigning unique waste tracking numbers to each container and by maintaining records that trace the IDW back to the original sampling locations.

The PPE and disposable sampling equipment shall be placed in clear plastic bags marked with the date and an associated borehole number. The bags will be tagged with a contractor-specific waste tracking tag and logged in the contractor-specific waste management logbook.

Soil generated during borehole advancement (cuttings) shall be collected in 55-gallon drums that meet DOT specifications (49 CFR 172) (CFR, 1997b) and 6-mil liners will be placed in the drums. Cuttings shall be segregated by borehole. Drums used to contain soil shall be inspected prior to use. A drum shall not be used if it is damaged, cannot be locked, or cannot accommodate a TID placed on it. Absorbent Stergo™ pads shall be added to drums of radiologically contaminated soil waste drums. Contractor-specific waste tracking tags shall be used and may be attached to the inside liner, the exterior of the drums, or marked with the drums’s unique identification number, and stored with

the contractor-specific logbook. The borehole number must be placed on each tracking tag. Drum inspection and absorbent addition shall be documented on the appropriate form.

Rinsate shall be collected in 55-gallon drums that meet DOT specifications (49 CFR 172) (CFR, 1997b) pending further treatment. Rinsate determined to be potentially LLW, may be analyzed separately to determine final disposition.

### **5.3.3 Hazardous Waste**

Suspected hazardous waste will be managed in accordance with RCRA and State of Nevada hazardous waste management regulations, interpreted as follows. Suspected hazardous waste will be placed in 55-gallon drums that meet DOT specifications (49 CFR 172) (CFR, 1997b) which will be closed and secured when not in use. The IDW shall be containerized in a manner to comply with Subpart CC of 40 CFR 265 (CFR, 1996b) and the drums shall be compatible with the waste in accordance with the requirements of 40 CFR 265.172 (CFR, 1996b). No incompatible wastes are expected to be generated; however, if incompatible waste is encountered in the field, it will be managed in accordance with 40 CFR 265.177 (CFR, 1996b) (i.e., shall not be placed in the same container) and shall be separated so that in the event of a spill, leak, or release, incompatible wastes shall not contact one another. Drums shall be handled and inspected in accordance with the requirements of 40 CFR 265.173 and 174, respectively (CFR, 1996b).

Hazardous waste shall be characterized in accordance with the requirements of 40 CFR 261 (CFR, 1996a). Characterization will be based on laboratory results and process knowledge. Drums containing IDW pending characterization will be marked with the words "Hazardous Waste Pending Analysis" until its regulatory status can be determined through interpretation and evaluation of laboratory results. Traceability shall be maintained by assigning a unique waste tracking number to each container and by maintaining records that trace the IDW back to the samples. After receipt of analytical results, hazardous wastes, if identified will be labeled and marked in accordance with the requirements of 40 CFR 262.32 (CFR, 1997a) and State of Nevada requirements.

Alpha and gamma spectroscopy are included in the required site characterization analyses to determine if the waste will meet the *Nevada Test Site Performance Objectives for Certification of*

*Nonradioactive Hazardous Waste* (BN, 1995). These analysis are included in the event the waste generated during site characterization is determined to be a hazardous waste.

Hazardous waste management methods to include the establishment of Satellite Accumulation Areas or a 90-day Hazardous Waste Accumulation Area will be employed to temporarily accumulate IDW pending characterization. These methods will be appropriate for the amount of waste being accumulated and in compliance with applicable State of Nevada and federal requirements.

Suspected hazardous waste will be accumulated at or near the site of generation in accordance with 40 CFR 262.34 (CFR, 1997a). Prior to or on the 90th day of accumulation as specified in 40 CFR 262.34 (a) (CFR, 1997a), hazardous waste will be shipped by a licensed/permitted hazardous waste transporter to a permitted treatment storage and disposal facility. If hazardous waste must remain on-site for longer than 90 days due to unforeseen, temporary, and uncontrollable circumstances, a letter requesting an extension for up to 30 days will be sent to the NDEP in accordance with 40 CFR Part 262.11(b) (CFR, 1997a). A copy of the uniform hazardous waste manifest shall be provided to the State of Nevada.

#### **5.3.4 Mixed Wastes**

Mixed waste, if generated, shall be managed in accordance with RCRA (40 CFR 262) (CFR, 1997a) and State of Nevada NAC 444 (NAC, 1990). These regulations, as well as DOE requirements for radioactive waste, are interpreted as follows. Where there is a conflict in regulations or requirements, the most stringent shall apply. For example, the 90-day accumulation time limit and weekly inspections per RCRA regulations will be applied to mixed waste even though it is not required for radioactive waste. Conversely, while RCRA does not require documented traceability, the waste acceptance program for LLW does; therefore, traceability shall be documented as described in [Section 5.3.2](#).

In general, mixed waste shall be managed in the same manner as hazardous waste, with added mandatory radioactive waste management program requirements. Suspected mixed waste will be managed in accordance with applicable regulations and requirements and will be marked with the words "Hazardous Waste Pending Analysis" pending characterization and confirmation of its regulatory status. However, once the waste determination is made, or the RCRA 90-day time

requirement draws to an end, mixed waste shall be transported via a permitted hazardous waste hauler to the Nevada Test Site (NTS) transuranic (TRU) waste storage pad for storage pending treatment or disposal. Mixed waste with hazardous waste constituents below land disposal restrictions may be accepted for disposal at the Area 5 Radioactive Waste Management Site.

Mixed waste not meeting land disposal restrictions will require development of a treatment plan under the requirements of the Mutual Consent Order between DOE and the State of Nevada (NDEP, 1995).

## **6.0 *Duration and Records Availability***

---

### **6.1 *Duration***

After the submittal of the CAIP to NDEP (FFACO milestone date of February 26, 1999), the following is a tentative schedule of activities (in calendar days):

- Day 0: Preparation for field work will begin.
- Day 60: The field work, including field screening and sampling, will begin. Samples will be shipped to meet lab holding times.
- Day 110: The field work will be completed.
- Day 185: The quality-assured laboratory analytical sample data will be available for review.
- The FFACO date for the CADD is September 30, 1999.

### **6.2 *Records Availability***

Historic information and documents referenced in this plan are retained in the DOE/NV project files in Las Vegas, Nevada, and can be obtained through written request to the DOE/NV Project Manager. The NDEP maintains the official Administrative Record for all activities conducted under the auspices of the FFACO.

## 7.0 References

---

AEC, see U.S. Atomic Energy Commission.

ASTM, see American Society for Testing and Materials.

Adams, Steven. 1998a. E-mail to D. Arnold regarding responses from the Health Physics department to questions about the Double Tracks RADSAFE Area brought up at the DQO meeting, 18 June. Las Vegas, NV: IT Corporation.

Adams, Steven. 1998b. Memo to C. Rodriguez regarding "Review of Preassessment Survey Data for Selected Sites," 8 April. Las Vegas, NV: IT Corporation.

Adams, Steven. 1998c. Memo to B. McCall regarding "Methodology for Determining Preliminary Action Levels for CAU 407, The Roller Coaster RADSAFE Area," 16 June. Las Vegas, NV: IT Corporation.

American Society for Testing and Materials. 1996. *Annual Book of American Society for Testing and Materials (ASTM) Standards*, Section 4, "Construction," Volume 04.08, "Soil and Rock (1)," and Volume 04.09, "Soil and Rock (11)." Philadelphia, PA.

BN, see Bechtel Nevada.

Bechtel Nevada. 1995. *Nevada Test Site Performance Objective for Certification of Nonradioactive Hazardous Waste*, G-E11/96.01, Rev. 0. Las Vegas, NV.

Burnett, W.D., H.L. Rarrick, and G.E. Tucker, Jr. 1964. *Health Physics Aspects of Operation Roller Coaster*, Report # SC-4973 (RR). Albuquerque, NM: Sandia National Laboratories.

CFR, see *Code of Federal Regulations*.

*Code of Federal Regulations*. 1996a. 40 CFR Part 261, "Identification and List of Hazardous Waste." Washington, DC: U.S. Government Printing Office.

*Code of Federal Regulations*. 1996b. 40 CFR Part 265, "Interim Status Standards for Owners and Operators of Hazardous Waste Treatment, Storage, and Disposal Facilities." Washington, DC: U.S. Government Printing Office.

*Code of Federal Regulations*. 1997a. 40 CFR Part 262, "Standards Applicable to Generators of Hazardous Waste." Washington, DC: U.S. Government Printing Office.

*Code of Federal Regulations*. 1997b. 49 CFR Part 172, "Hazardous Materials Table, Special Provisions, Hazardous Materials Communications, Emergency Response Information, and Training Requirements." Washington, DC: U.S. Government Printing Office.

DOE, see U.S. Department of Energy.

DOE/NV, see U.S. Department of Energy, Nevada Operations Office.

EG&G/Energy Measurements. 1980. Aerial photograph, perf #3309, frame #092, 08-09-1980.

EPA, see U.S. Environmental Protection Agency.

FFACO, see *Federal Facility Agreement and Consent Order*.

*Federal Facility Agreement and Consent Order*. 1996. Agreed to by the State of Nevada, the U.S. Department of Energy, and the U.S. Department of Defense.

Gogolak, C.V., G.E. Powers, and A.M. Huffert. 1998. *A Nonparametric Statistical Methodology for the Design and Analysis of Final Status Decommissioning Surveys*, NUREG 1505. Washington, DC: U.S. Nuclear Regulatory Commission.

Hoover, Richard. SAIC. 1998. Memo to M. Foley (SAIC) regarding "Preliminary Geophysical Results Double Tracks RADSAFE Area Corrective Action Unit 486, Corrective Action Site 71-23-001-71DT," 22 March. Las Vegas, NV.

Horwitz, E.P., M.L. Dietz, R. Chiarizia, H. Diamond, A.M. Essling, and D. Graczyk. 1992. "Separation and Preconcentration of Uranium from Acidic Media by Extraction Chromotography." In *Analytica Chimica Acta*, 266: 25-37.

Horwitz, E.P., R. Chiarizia, M.L. Dietz, H. Diamond, and D.M. Nelson. 1993. "Separation and Preconcentration of Actinides from Acidic Media by Extraction Chromotography." In *Analytica Chimica Acta*, 281: 361-372.

IT Corporation. 1995. *Field Instructions for Geophysical Investigation of Double Tracks and Cactus Springs Sites*, DOE/NV/10972-145. Las Vegas, NV.

Karanthanas, A.D., and B.F. Hajek. 1982. "Quantitative Evaluation of Water Adsorption on Soil Clays." In *Soil Science Society of America Journal*, 46: 1321-1325. Madison, WI.

MOSA, see Soil Science Society of America.

NAC, see *Nevada Administrative Code*.

National Academy of Science. 1963. *Nuclear Science Series*.

NDEP, see Nevada Division of Environmental Protection.

*Nevada Administrative Code*. 1990. NAC444.940 - NAC444.9555, "Solid Waste Disposal." Carson City, NV: Nevada Division of Environmental Protection.

*Nevada Administrative Code*. 1996a. NAC445A.345 - NAC445A.22755, "Water Controls." Carson City, NV: Nevada Division of Environmental Protection.

*Nevada Administrative Code*. 1996b. NRS459.9973, 459.9975, and 459.9977, "Hazardous Materials." Carson City, NV: Nevada Division of Environmental Protection.

Nevada Division of Environmental Protection. 1995. "Mutual Consent Agreement Between the State of Nevada and the Department of Energy for the Storage of Low-Level Land Disposal Restricted Mixed Waste." Transmittal from P. Liebendorfer (NDEP) to D. Elle (DOE/NV), 7 June. Carson City, NV.

NRC, see U.S. Nuclear Regulatory Commission.

Penwell, C. 1995. Interview with B. Schier (DBS) regarding the burial pit and decon area at the DTRSA, 11 April. Las Vegas, NV.

Perry, J.K., W.N. Baillie, J.K. Trimble, and R.P. Bloodworth. 1966. *Operation Roller Coaster, Project Officers Report-Project 2.6d, Special Particulate Analysis (Soil)*, POR-2509 (WT-2509). Golden, CO: Colorado School of Mines, Colorado.

REEC Co, see Reynolds Electrical and Engineering Co., Inc.

Reynolds Electrical and Engineering Co., Inc. 1964. *Project Manager's Report, Project Roller Coaster*, NVO-10. Prepared for U.S. Atomic Energy Commission, Nevada Operations Office. Las Vegas, NV.

SAIC, see Science Applications International Corporation.

Science Applications International Corporation, R.E. Wright Environmental, Inc. 1998. *First Quarter 1998 Surface Geophysical Survey Report Double Tracks Rad Safe Area Corrective Action Unit 486 Corrective Action Site 71-23-001-71DT at the Tonopah Test Range, Tonopah, Nevada*, R.E. Wright Project 01-1408-08-3610-000. Middletown, PA.

Sherwood, R.D. 1966. *Operation Roller Coaster, Project Officers Report-Project 2.6b, Special Particulate Analysis (U)*, POR-2507 (WT-2507). Westwood, NJ: Isotopes, Inc.

Shugart, Jim. 1995. Interview with Brad Schier (DBS) regarding a burial pit at the DTRSA, 12 May. Las Vegas, NV.

Soil Science Society of America. 1986. *Methods of Soil Analysis*, 2nd Edition, Part 1. Madison, WI.

Sygitowicz, L. Bechtel Nevada. 1998. Interview with M. England (SAIC) regarding Operation Roller Coaster, 10 March. Las Vegas, NV.

USACE, see U.S. Army Corps of Engineers.

U.S. Army Corps of Engineers. 1970. "Laboratory Soils Testing." In *Engineering Manual* (EM) 1110-2-1906, Appendix II. Washington, DC.

U.S. Atomic Energy Commission. 1963. *Department of Defense Operations Plan, Operation Roller Coaster*, 77652. Albuquerque, NM.

U.S. Department of Energy, Nevada Operations Office. 1994b. *Project Management Plan*, Rev. 0. Las Vegas, NV.

U.S. Department of Energy, Nevada Operations Office. 1996a. *Corrective Action Unit Work Plan, Tonopah Test Range, Nevada*, Rev. 0. Las Vegas, NV: IT Corporation.

U.S. Department of Energy, Nevada Operations Office. 1996b. *Environmental Restoration Project Health and Safety Plan*, Rev. 2. Las Vegas, NV.

U.S. Department of Energy, Nevada Operations Office. 1996c. *NV/YMP Radiological Control Manual*, Rev. 2, DOE/NV/11718-079, UC-702. Las Vegas, NV.

U.S. Department of Energy, Nevada Operations Office. 1996d. *Industrial Sites Quality Assurance Project Plan*, Nevada Test Site, Nevada, Rev. 1, DOE/NV--372. Las Vegas, NV.

U.S. Department of Energy, Nevada Operations Office. 1997. *Nevada Test Site Waste Acceptance Criteria*, Rev. 1. Las Vegas, NV.

U.S. Department of Energy, Nevada Operations Office. 1998a. *Corrective Action Investigation Plan for the Roller Coaster RADSAFE Area, Corrective Action Unit 407, Tonopah Test Range, Nevada*, DOE/NV--503. Las Vegas, NV.

U.S. Department of Energy, Nevada Operations Office. 1998b. ERD-05-201, "Chain of Custody," Rev. 1. Las Vegas, NV.

U.S. Department of Energy, Nevada Operations Office. 1998c. ERD-05-701, "Sampling Equipment Decontamination," Rev. 1. Las Vegas, NV.

U.S. Environmental Protection Agency. 1994a. *Contract Laboratory Program: Statement of Work for Inorganics Analysis; Multi-Media, Multi-Concentration, ILMO 3.0*, EPA-540/R-94/076. Washington, DC.

- U.S. Environmental Protection Agency. 1994b. *Contract Laboratory Program: Statement of Work for Organics Analysis; Multi-Media, Multi-Concentration, OLMO 1.0, Including Revisions OLMO 1.1 Through OLMO 1.8*, EPA-540/R-94/078. Washington, DC.
- U.S. Environmental Protection Agency. 1994c. *Contract Laboratory Program: Statement of Work for Organics Analysis, OLMO 3.1*, EPA-540/R-94/073. Washington, DC.
- U.S. Environmental Protection Agency. 1994d. *Guidance for the Data Quality Objectives Process*, EPA QA/G-4. Washington, DC.
- U.S. Environmental Protection Agency. 1996. *Test Methods for Evaluating Solid Waste, Physical/Chemical Methods*, SW-846, 3rd Edition, CDROM. Washington, DC.
- U.S. Environmental Protection Agency. 1998. Memo from S.J. Smucker regarding *Region 9 Preliminary Remediation Goals (PRGs)*, 01 August. San Francisco, CA.
- U.S. Nuclear Regulatory Commission. 1997. *Multi-Agency Radiation Survey and Site Investigation Manual (MARSSIM)*, NUREG-1575/EPA 402-R-97-016. Prepared by the NRC, EPA, DOE, and DoD. Washington DC: U.S. Government Printing Office
- van Genuchten, M. 1980. "A Closed Form Equation for Predicting the Hydraulic Conductivity of Unsaturated Soils." In *Soil Science Society of America Journal*, 44: 892-898. El Cerrito, CA.
- Wilson, R.H. University of Rochester, N.Y. 1995a. Interview with B. Schier (Daniel B. Stephens and Associates [DBS]) regarding Double Tracks burial pit, 13 April. Las Vegas, NV.
- Wilson, R.H. University of Rochester, N.Y. 1995b. Interview with R. Dubiskas (IT Corporation) regarding Double Tracks RADSAFE Area, 2 May. Las Vegas, NV.
- Wilson, R.H. and J.L. Terry. 1965. *Plutonium uptake by animals exposed to a non-nuclear detonation of a plutonium-bearing weapon simulant, Part I. Field Operations*, UR-665. University of Rochester, NY.

# **Appendix A**

## **Data Quality Objectives Process**

## ***A.1.0 DQO Kickoff Meeting***

---

Data Quality Objectives Worksheets for the Double Tracks Radiological Safety Area-CAU 486.

Participant	Kickoff Meeting		
	Meeting 1 Date June 17, 1998	Meeting 2 Date July 16, 1998	Meeting 3 Date July 30, 1998
Janet Appenzeller-Wing, DOE	X		
Karen Beckly, NDEP	X		
Mike McKinnon, NDEP	X		
Kevin Cabble, DOE	X	X	X
Cheryl Rodriquez, HSI Geotrans	X	X	X
Steve Adams, IT	X		
Mark DiStefano, IT	X		X
Mary Todd, SAIC	X		X
Dawn Arnold, SAIC	X	X	X
Jeanne Wightman, Mactech	X		
Cindy Dutro, IT	X		
Jerry Bonn, BN	X		
Syl Hersh, IT	X		
Jason Moore, SAIC	X		
Marjorie England, SAIC	X		
Greg Raob, NDEP	X		
Lori Arent, DOE	X		
Thomas Fitzmaurice, BN	X		

## ***A.2.0 Problem Statement***

---

### ***A.2.1 State the Problem***

Radioactive wastes and possibly hazardous wastes were disposed at the Double Tracks RADSAFE Area. Existing information is insufficient to identify the locations of historical animal burial sites and the decontamination facility. Lacking this information hinders selecting a preferred corrective action.

#### ***A.2.1.1 Problem to be Resolved***

Identify and verify the locations of the animal burial pit, the decontamination facilities for vehicles and personnel, and the decontamination sump. Determine whether COPCs are present in quantities exceeding regulatory levels. If such contamination is detected, determine the extent of the contamination.

#### ***A.2.1.2 Site History and Known or Suspected Sources of Contamination***

A facility description including the physical setting, operational history, and suspected/known sources of contamination is described in [Section 2.0](#) of the CAIP.

## ***A.3.0 Conceptual Model***

---

### ***A.3.1 Contaminants of Potential Concern***

The site is believed to be contaminated by plutonium and uranium from the decontamination activities associated with the Double Tracks experiment. VOCs, SVOCs, TPH, and metals may be present from the decontamination of vehicles and personnel. Pesticides and PCBs are not expected at this site.

[Table A.3-1](#) lists COPCs, field screening methods if applicable, and laboratory analytical methods. Field screening and laboratory preliminary action levels for the anticipated COPCs or COPC group are also listed in [Table A.3-1](#) and discussed in [Figure 3.3](#) of the CAIP. Analytical methods, reporting limits, and precision and accuracy requirements are discussed in [Section 3.4](#) and [Table 3-1](#) of the CAIP. Field data and laboratory results will be compared to identify COPCs exceeding action levels.

Surface radiological surveys were performed in March 1998 for beta and gamma-emitting radionuclides. The survey covered the disturbed area of the former DTRSA. The results of the survey demonstrate that there is no beta-gamma activity elevated above background on the soil surface of the DTRSA (Adams, 1998b).

### ***A.3.2 Conceptual Site Model***

The conceptual site model describes the most probable scenario for current conditions at the DTRSA. [Table A.3-2](#) defines the assumptions for the DTRSA that are the basis for identifying appropriate sampling strategy and data collection methods.

**Table A.3-1  
Contaminants of Potential Concern**

Potential Contaminants	Comments	Field Screening Method	Field Screening Level	Analytical Method	Preliminary Action Level	Source
VOCs	Expected based on process knowledge (MEK and alcohol)	Headspace	20 ppm or 2.5X background (whichever is greater)	8260 <sup>a</sup>	PRGs <sup>b</sup>	NAC 445A <sup>c</sup>
SVOCs	May be expected at vehicle decon area	N/A	N/A	8270 <sup>a</sup>	PRGs <sup>b</sup>	NAC 445A <sup>c</sup>
TPH	May be expected at vehicle decon area	Hanby or comparable method	> 100 ppm	8015 Modified <sup>a</sup>	>100 ppm	NAC 445A <sup>c</sup>
Total RCRA Metals	May be expected at vehicle decon area	N/A	N/A	6010/7470 <sup>a</sup>	PRGs <sup>b</sup>	NAC 445A <sup>c</sup>
Radionuclides	May be expected based on process knowledge	Field screening with Electra (alpha/beta scintillator) and a FIDLER <sup>d</sup> (to identify <sup>241</sup> Am associated with <sup>241</sup> Pu decay)	Determination of action levels will follow the methodology used for CAU 407; 20 background surface soil samples surveyed for gross alpha, gross beta and gamma activity and calculate average. Standard deviation will be determined per the standard deviation equation, not the square root of average activity. PAL is mean background activity plus two times standard deviation. See Attachment 2.	N/A	N/A	Adams, 1998c
Isotopic Plutonium	May be expected based on process knowledge	N/A	N/A	NAS-NS-3058 <sup>e</sup>	PAL determined by applying nonparametric test to background concentration.	NUREG-1575 <sup>f</sup>
Isotopic Uranium (U238)	May be expected based on process knowledge	N/A	N/A	NAS-NS-3050 <sup>e</sup>	PAL determined by applying nonparametric test to background concentration.	NUREG-1575 <sup>f</sup>
Pesticides/PCBs	Not expected based on process knowledge	N/A	N/A	N/A	N/A	N/A

<sup>a</sup>EPA *Test Methods for Evaluating Solid Waste*, 3rd Edition, SW-846 (EPA, 1996)

<sup>b</sup>EPA *Region IX Preliminary Remediation Goals* (PRGs) (EPA, 1998); will be used as risk-based PALs for this CAU

<sup>c</sup>NDEP Corrective Action Regulations (NAC, 1996a)

<sup>d</sup>FIDLER, Field Instrument for Detecting Low Energy Radiation

<sup>e</sup>National Academy of Science, Nuclear Science Series, September 1963

<sup>f</sup>NUREG Nuclear Regulatory Commission Multiagency Radiation Survey and Site Investigation Manual (MARSSIM), NRC, 1997

PAL - Preliminary action level      Am - americium      Pu - plutonium

**Table A.3-2**  
**Conceptual Model**  
(Page 1 of 2)

Conceptual Model Element	Assumptions	Source
System dynamics	COPCs primarily in liquid form were released into the soil at the decon facility trench.	1995/96 Interviews with former site personnel; similar site knowledge; AEC, 1963; Wilson and Terry, 1965; REECo, 1964; field visits
	COPCs primarily in solid form were released into the soil at the animal burial pit. It is unknown if the decon sump trench was used as a disposal pit for solid waste other than pea-gravel used in the decon pad.	
	Plutonium and uranium concentrations measured on the animal wagons are low. These would be considered worst case for radiological contamination for the vehicle decon area.	
	Plutonium and uranium migration is known to be limited in soils (Adams, 1998a).	
	Environmental conditions such as low annual precipitation rates and high evaporation rates restrict both the vertical and lateral migration potential of contaminants, therefore, making groundwater contamination unlikely at this site.	
	There is a potential for the waste trenches to be exposed by erosional forces due to water runoff along the alluvial fan surface. Current drainage patterns dissect parts of the disturbed area in which the waste trenches are believed to exist. This drainage pattern trends in a general southwest to west direction.	
	Similar sites such as the Cactus Springs Waste Trenches show that contaminants have not traveled beyond extent of trenches and that action levels were not exceeded for known hazardous waste.	
	Investigation activities at the Roller Coaster RADSAFE Area may present a worst case scenario concerning migration and concentration of COPCs introduced by decon activities.	

**Table A.3-2**  
**Conceptual Model**  
(Page 2 of 2)

Conceptual Model Element	Assumptions	Source
Source location	Assumed that two trenches or pits exist at the DTRSA; one for vehicle and personnel decon and a second for animal decon and shroud/hide burial. Attempts to verify the exact locations of either trench in the field have been unsuccessful due to a lack of physical evidence.	Geophysical survey; (SAIC, 1998) 1993-1998 interviews; photo interpretation (photos located in IT Public Affairs office)
	Only two potential areas have been identified through geophysical surveys and some physical evidence (see Attachment 1). One of the two areas is suspected to be the animal burial pit because of its location on the north side of Cactus Springs Road.	
	Interviews suggest that dimensions of both trenches are approximately 3 m deep; 9 to 12 m long; 2 to 3 m wide and were excavated by a bulldozer.	
	Photo interpretation suggests the vehicle decon area was located on the south side of the Cactus Spring Road with length of trench running E-W and parallel to the road.	
	Personnel decon area appears to be north of vehicle decon but south of Cactus Springs Road.	
Lateral extent of potential contaminants	The lateral migration of potential contaminants are assumed to be confined within the trench dimensions.	Wilson, 1995a and 1995b; geophysical surveys, (SAIC, 1998)
Vertical extent of potential contaminants	Vertical extent is not known beyond the trench/native soil boundary. The waste is covered by soil, therefore, reducing exposure to contaminated dust.	Similar site knowledge
Practical constraints	Restricted access to bombing range; meteorological; heavy equipment and resource availability; health and safety concerns; approval of the CAIP.	Site knowledge
Future land use	Same as current use.	Assumptions for the Nellis Air Force Range
Potential exposures	Intrusion by site personnel working on range may be a hazard because the site is not posted with signs or restricted by fences; therefore, creating the potential for exposure to contaminated soil or waste. Intrusive behavior by wildlife may create exposure hazards.	Site knowledge

## ***A.4.0 Decisions, Input, and Strategy***

---

### ***A.4.1 Decisions to be Resolved by the Investigation***

Decisions to be resolved:

- Determine the locations and boundaries of the animal burial pit and the vehicle/personnel decon area.
- Determine if COPCs are present at the site.
- Determine if COPC concentrations exceed regulatory levels and/or standards for the protection of human health and the environment.
- Determine the extent of contamination with enough certainty to develop and evaluate a range of potential corrective actions, including closure in place and clean closure.
- Determine if the potential exists for future ordnance activity to expose the site.

### ***A.4.2 Inputs and Strategy***

Inputs to the decision include those elements of information used to support the decisions in addressing the identified problem. A list of information inputs, existing data, identified data gaps, and brief strategies are discussed in [Table A.4-1](#). A more detailed discussion of investigation strategies is found in [Section A.7.0](#) and [Section 4.0](#) of the CAIP.

**Table A.4-1**  
**Decision/Input Table for CAU 486**

Decision	Input	Existing Data	Data Gap	Strategy
Determine the location of the burial pit and the decon area	Identification of site boundaries	--Interviews with site workers indicate that gravel associated with the decon area was bulldozed into the sump trench and covered with dirt at the conclusion of activities. --Geophysical evidence indicates two potential areas on the north side of the Cactus Spring Road. --Ground level photos taken in May 1963 show the decon facility on the south side of Cactus Spring Road. Skinning racks are shown on north side of Cactus Spring Road. For additional details see <a href="#">Table A.3-2</a> and <a href="#">Section 2.2</a> of CAIP.	Exact location and size of the site boundaries (i.e., trench/pit boundaries) are unknown. Depth to native soil beneath the trenches is unknown.	Trench in the locations believed to be the decon area and the burial pit. Near-surface and subsurface field screening for elevated radiological levels. Visual observation for subsurface soil changes and miscellaneous trash/debris.
Determine if COPCs are present	COPC Identification	Animal shrouds are known to be contaminated with plutonium and uranium. The levels of contamination are unknown but thought to be low (less than 100 micrograms of plutonium for all shrouds combined) (Wilson, 1995a and 1995b; Wilson and Terry, 1965).	The presence of plutonium, uranium, VOCs, SVOCs, TPH and RCRA metals are unknown but suspected from decon activities that include waste water, doffed animal shrouds, french drain gravel, MEK, alcohol swabs; and misc trash such as used air balloons.	Analyze soils by field screening and laboratory methods for COPCs as listed in <a href="#">Table A.3.1</a> .
Determine if COPC concentrations exceed regulatory levels	Action Level Exceedance			Compare detectable analytes to established regulatory limits as prescribed in <a href="#">Section 3.3</a> of the CAIP.
Determine the extent of contamination with enough certainty to develop and evaluate a range of potential corrective actions for the site	COPC Distribution	No data exists for distribution and migration of COPCs. Assumptions are that migration of plutonium and uranium is minimal due to the insoluble nature of both isotopes. Original test device contained plutonium in the form of metal and depleted uranium reportedly in the form of oxides (Adams, 1998a).	Distribution and migration, including depth and lateral extent of COPCs, is unknown.	Collect data of sufficient quantity and quality to support the input needed to resolve the decision. Soil borings will be drilled to a minimum depth of 20 ft.
	Potential Corrective Actions			
	Meteorologic data	Available in the CAU Work Plan for TTR.	None	None
	Geologic/hydrologic data	Geologic summary in CAU Work Plan for TTR Depth to groundwater in CAU Work Plan for TTR.	Conductivities of soil Existing cover data	Collect geotechnical samples and analyze for soil characteristics.
Determine if potential exists for future ordnance activity to expose the site	Present and future use of ordnance near site	None observed in suspected decon areas today; historically, ordnance has been found within the disturbed area.	Unknown if wayward ordnance would impact the site in the future.	Evaluate site for clean closure if COPC exceed regulatory levels.
Health and Safety	Radiological concerns in subsurface, predominantly plutonium and uranium	Radiological surveys for surface contamination show no elevated readings; Anti-Cs only needed for intrusive work where screening levels are above established screening action levels.	Subsurface radiological concentrations are unknown.	Conduct field screening of excavated soil, samples and soil borings.

## **A.5.0 Decision Rules**

---

The decision rules are summary statements that specify the way data will be used to make the decisions. Data collected from the DTRSA field investigation will be evaluated and compared to both field screening and laboratory preliminary action levels, as identified in [Section 3.3](#) of the CAIP and [Table A.3-1](#) of the DQO worksheets, to make the following decisions:

- Presence of COPCs
- Concentrations of COPCs
- COPC concentrations above preliminary action levels

The following decision rules will be used to guide the investigation and subsequent data evaluation:

- If either of the following occur in the course of the investigation, then the investigation will be halted and rescoped as necessary:
  - The conceptual model fails to such a degree that rescoping is required.
  - Sufficient data are collected to support evaluation of closure options.
- For the subsurface investigation, if field screening indicates no COPCs above field-screening levels, then a sample at the next prescribed subsurface location will be field-screened. If no COPCs are indicated, a confirmatory laboratory sample will be collected, and the subsurface investigation will be halted for that boring.
- For the subsurface investigation, if field screening indicates the presence of COPCs above field screening levels, then the investigation will continue to determine extent of COPCs until two, consecutive samples indicate field screening results below field screening levels. Samples will be collected for laboratory analysis at those subsurface intervals that exceed field-screening levels and as stated in the previous bulleted item.
- For surface and near-surface locations, where field screening indicates the presence of COPCs above field screening levels, a sample will be collected for laboratory analysis.
- If laboratory results indicate the presence of COPCs above preliminary action levels, a CADD will be prepared.
- If no COPCs are identified above preliminary action levels, a CADD for *CAUs with Contamination below Regulatory Limits* will be prepared according to the outline agreed upon by NDEP and DOE/NV. This type of CADD incorporates the elements of the regular CADD and the corrective action plan and serves as the closure report for the site.

## ***A.6.0 Decision Error***

---

Biased sampling will be conducted on subsurface samples at the DTRSA within identified trench boundaries and/or metallic anomalies. Because biased sampling is to be performed, assigning confidence levels is not appropriate. Biased sampling will be conducted with sampling as close to selected locations (i.e., near anomalies, within trench/pit boundary) as possible, yielding the highest confidence that the problem has been found. To ensure confidence in determining the vertical extent of contamination, two consecutive clean samples, with field screening results below field screening levels, will be obtained from soil borings drilled to collect environmental samples. These samples will be confirmed clean through off-site laboratory analysis, and will define the lower limit of the affected soils.

If, during excavation activities, the decon area cannot be identified then systematic random sampling will be conducted to collect subsurface confirmatory samples for offsite laboratory analyses. The results from the confirmatory samples will be used in evaluating and supporting future corrective action strategies. Random samples will be collected from grid cells imposed on the assumed surface area of the decontamination activities. The grid method would allow sampling that could statistically demonstrate that the contamination does not exist or is below preliminary action levels.

Statistical methods will be employed in order to form a basis for determining the appropriate number of samples to verify that constituents of concern are present below preliminary action levels. Equation 8 of Chapter 9 of SW-846 (EPA, 1996) gives the calculation of the number of samples required to measure the sample mean of  $X$  of the sampled area, associated with a sample standard deviation of  $s$ , with an acceptably small probability of error,  $\alpha$ , as:

$$n = \left( t_{1-\alpha/2, n-1} \frac{s}{[RT - X]} \right)^2$$

where

$t_{1-\alpha/2, n-1}$  = the corresponding Student t value for the appropriate probability and number of degrees of freedom (= n-1)

s = the sample standard deviation

RT = the regulatory threshold for the constituent of concern

X = the mean concentration of the constituent of concern

For the Double Tracks RADSAFE Area, there is no preliminary information regarding the mean or standard deviation of the constituents of concern. In the absence of this information, each area of concern will be divided into equal grid spaces, and a systematic, random sampling pattern will be followed. The required number of samples will then be calculated from the analytical results using the above equation. If additional samples are required to demonstrate that the site is below preliminary action levels, they will be collected at a later time. If the initial sampling effort shows that there are areas which are above preliminary action levels, the contaminated areas will be investigated further. The data showing the presence of constituents of concern above preliminary action levels will be discarded for purposes of calculation, and Equation 8 will be applied again, using the new data. This will confirm that an adequate number of samples were collected and analyzed to demonstrate that the site is below preliminary action levels.

## ***A.7.0 Sampling Design***

---

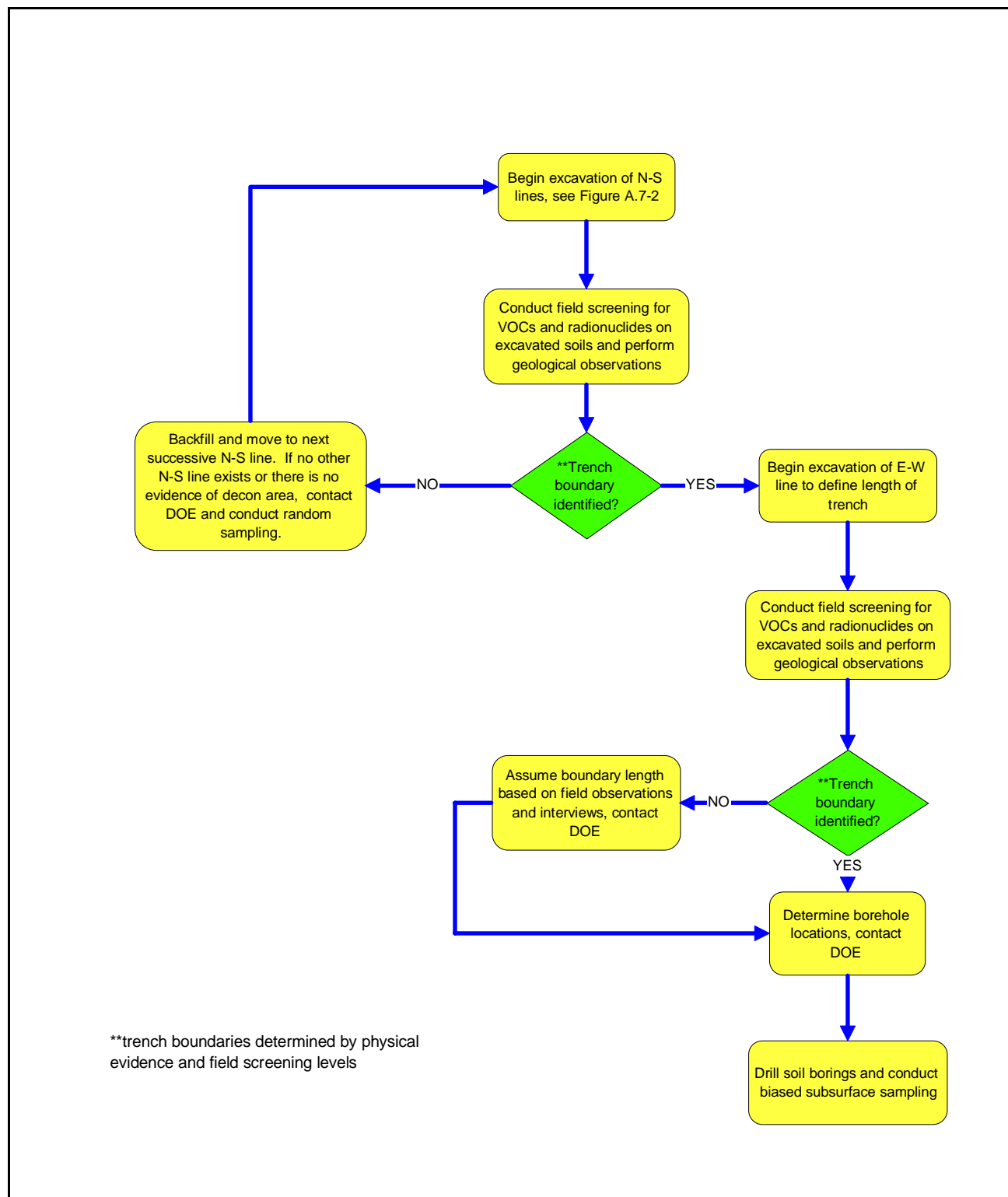
The field investigation at CAU 486 will consist of two phases. The first phase will involve trenching activities to locate the exact position of the decon sump/trench and the animal burial pit. The second phase will involve the drilling of boreholes and the collection of soil samples at the site. Additional details will be provided in [Section 4.0](#) of the CAIP.

The first phase of investigation will involve the following activities:

- Conduct test pit excavations every 1.5 to 3 m (5 to 10 ft) along the excavation lines shown in [Figure A.7-2](#) during the field investigation to determine the exact locations of decon sump/trench and animal burial pit. A decision diagram has been created for excavation activities in [Figure A.7-1](#) along with a location map for the proposed trenches in [Figure A.7-2](#).
- Conduct field screening on excavated soils for VOCs and radiological constituents.
- Conduct visual observation of excavated material for changes in soil characteristics that indicate the site boundary has been identified; this would include any trash/debris encountered.
- Determine borehole locations based on evidence from excavation activities.
- Place excavated soil back into the trench as close to the original spot as possible.

The second phase of investigation will involve the following activities:

- Collect bias surface and subsurface samples from borehole locations within trench/pit boundaries identified through excavation activities or at locations of geophysical anomalies.
- Collect random surface and subsurface samples if the trench/pit boundaries cannot be identified through excavation activities in the area south of the road.
- Conduct field screening for VOCs and radiological constituents at all sample locations.
- Conduct laboratory analysis on select samples based on field-screening results and other field data.
- Conduct adequate QC sampling to validate all data.
- After evaluation of acquired sampling data, advance step-out borings as needed to bound the lateral and/or vertical extent of contamination.



**Figure A.7-1**  
**Decision Diagram**

156 feet  
in  
area  
and  
anomaly

By \_\_\_\_\_ Date \_\_\_\_\_ Subject \_\_\_\_\_

Chkd By \_\_\_\_\_ Date \_\_\_\_\_

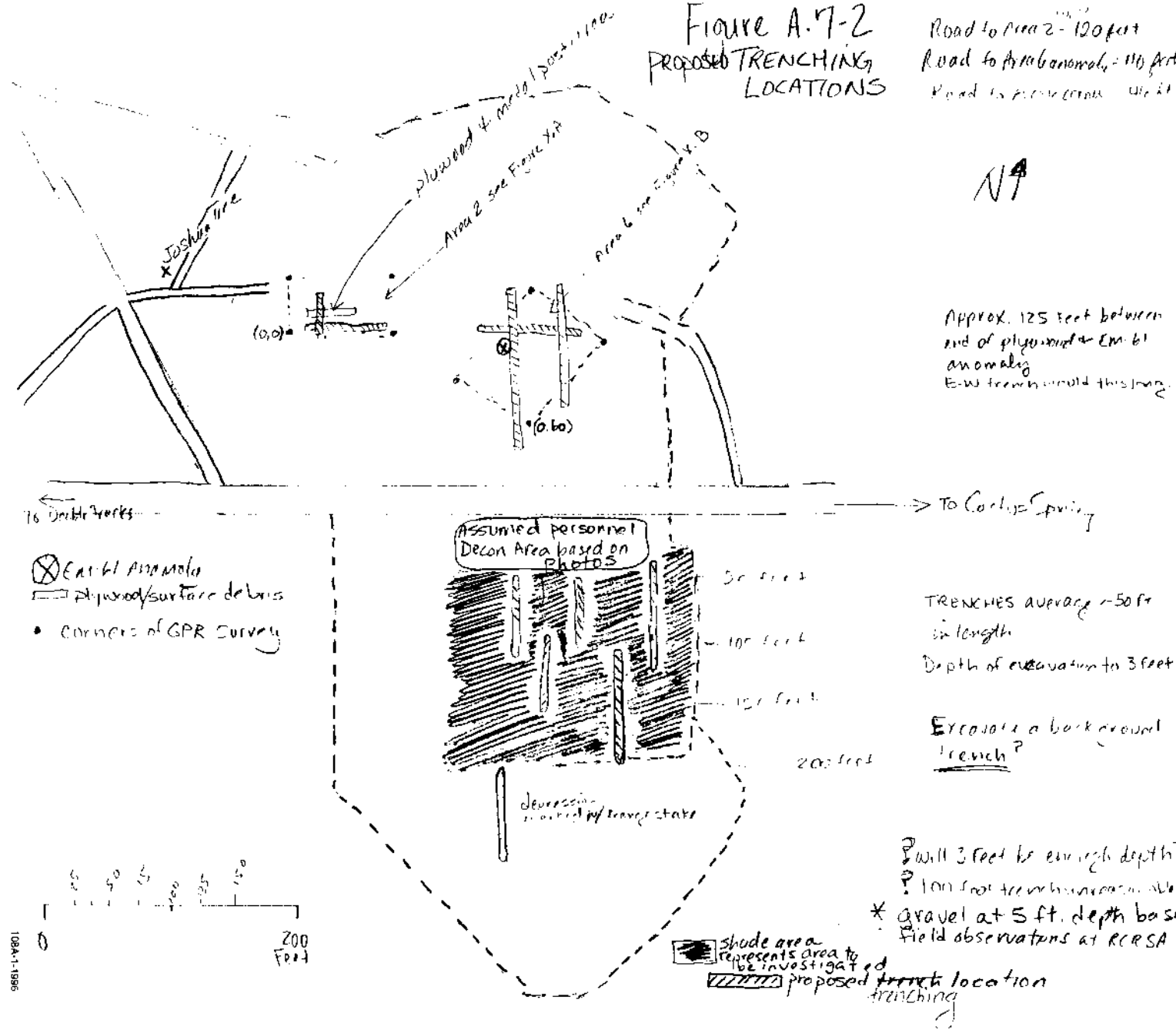
Proj. No. \_\_\_\_\_ Sheet No. \_\_\_\_\_

**Figure A.7-2  
PROPOSED TRENCHING  
LOCATIONS**

Road to Area 2 - 120 feet  
Road to Area 6 - 110 feet  
Road to Area 6 - 110 feet

N

Approx. 125 feet between  
end of plow and EM 61  
anomaly  
E-W trench would this long.



**Figure A.7-2  
Proposed Trenching Locations**

Determining the final placement of boreholes will be conducted in the field by the Site Supervisor after excavation activities have been completed.

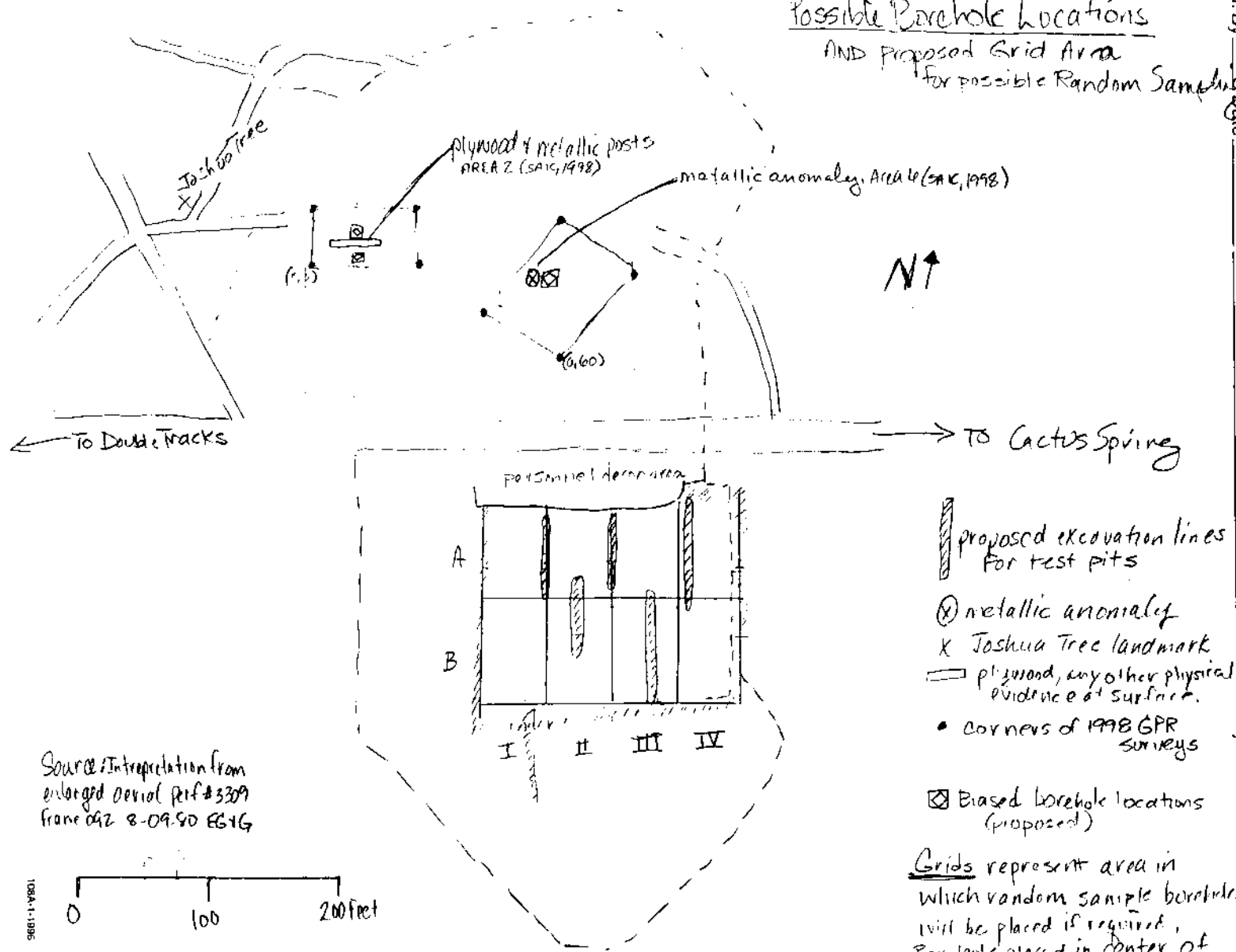
- If the decon area and animal burial pit boundaries are identified, then boreholes will be placed in biased locations within the trench such as along the linear axis, in the area of metallic anomalies and near physical evidence seen at the surface (i.e., plywood, depressions, mounds).
- In the event trench boundaries cannot be identified on the south side of the road through excavation, then confirmatory sample locations will be based on a grid method imposed over a defined area for the collection of random samples.

Figure A.7-3 depicts possible borehole locations for the animal burial pit based on historical research and recent geophysical surveys.

Excavation techniques are outlined in more detail in the CAIP ([Section 4.0](#)) and the field instructions. Essentially, excavation lines will not be continuous but rather a 0.6- to 1-m (2- to 3-ft) line (or test pit) will be excavated (north-south). If no evidence of the feature is found, another 0.6- to 1-m (2- to 3-ft) line (or test pit) will be excavated approximately 1.5 m (5 ft) from the previous line until the boundaries are identified. The length (east-west) will mostly likely be defined by excavating step-out lines (or test pits) orientated north-south.

By \_\_\_\_\_ Date \_\_\_\_\_ Subject \_\_\_\_\_  
Chkd. By \_\_\_\_\_ Date \_\_\_\_\_  
Proj. No. \_\_\_\_\_ Sheet No. \_\_\_\_\_ of \_\_\_\_\_

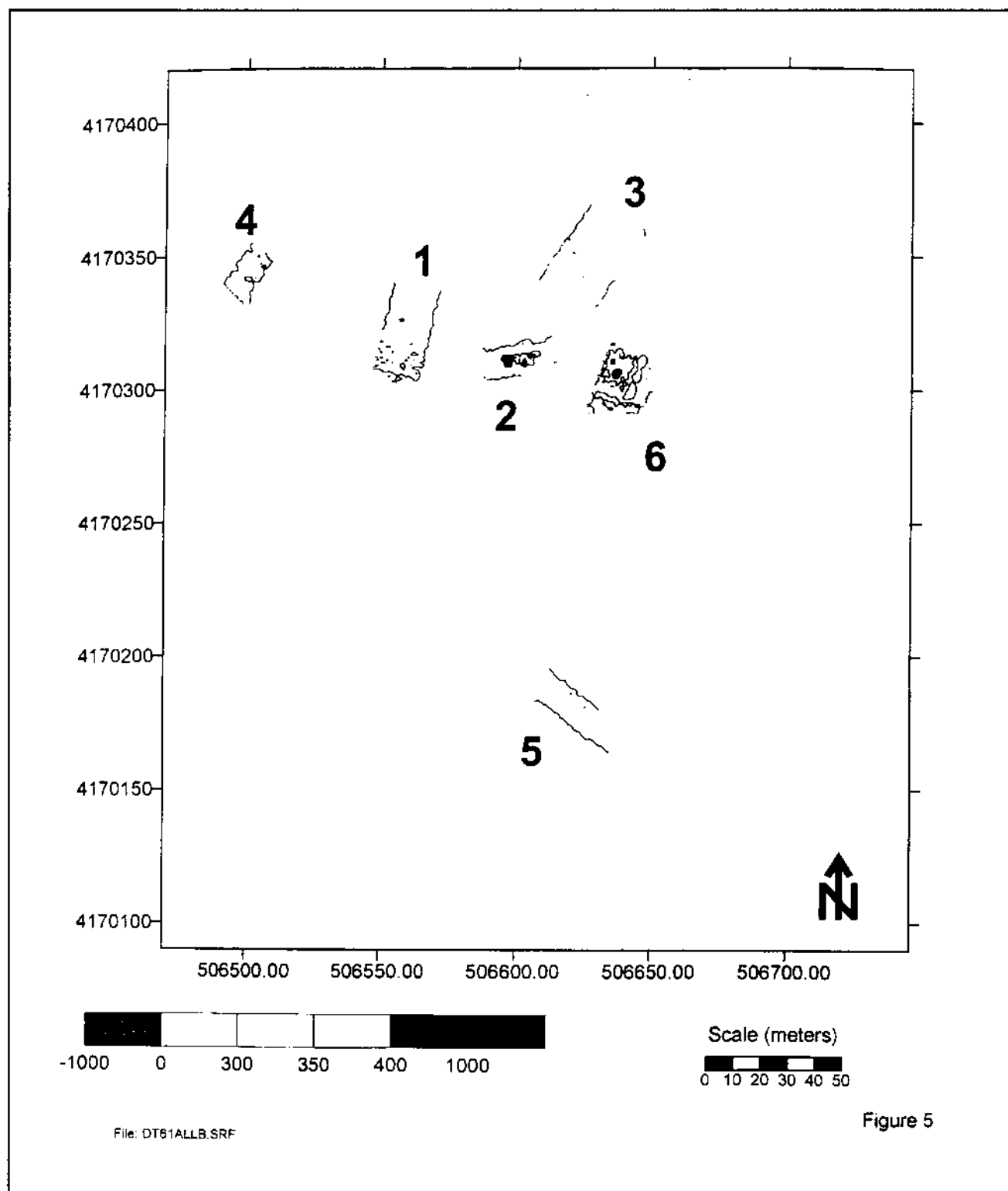
**Figure A.7-3**  
**Possible Borehole Locations**  
**AND Proposed Grid Area**  
**for possible Random Sampling**



**Figure A.7-3**  
**Possible Borehole Locations and Proposed Grid Area for Possible Random Sampling**

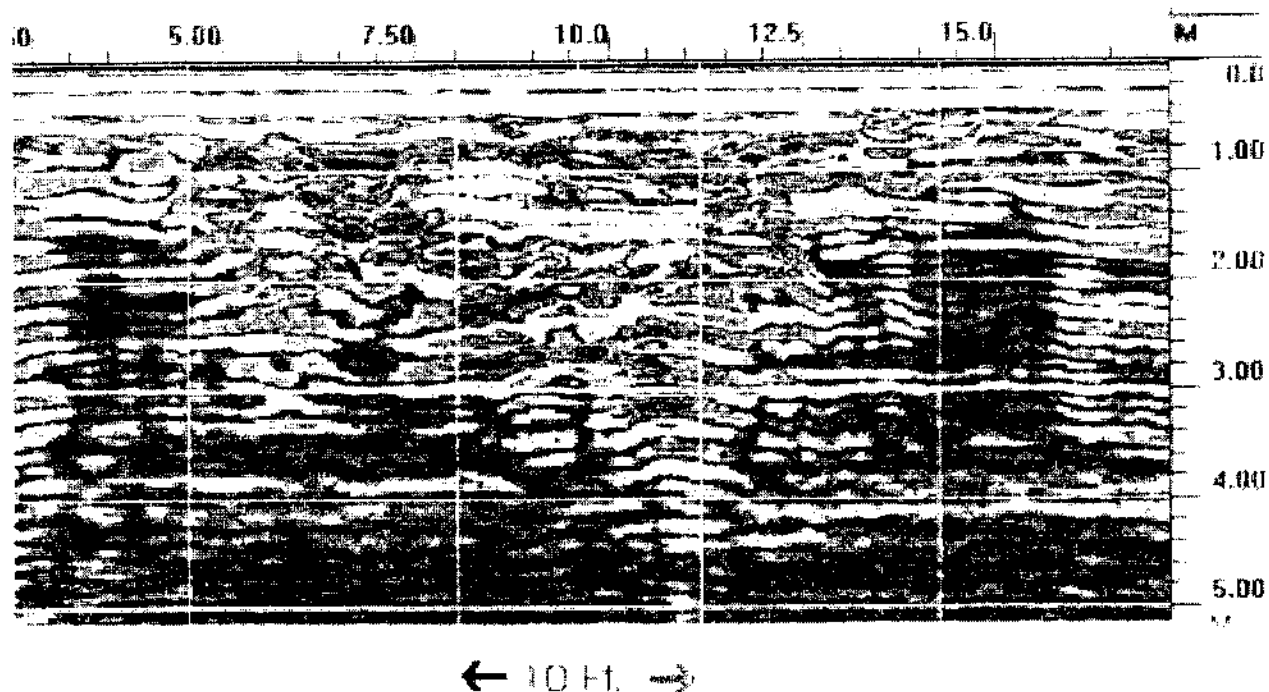
## **Attachment 1**

**Figures from Hoover, Richard (SAIC). 1998. Memo to M. Foley (SAIC) regarding "Preliminary Geophysical Results, Double Tracks RADSAFE Area Corrective Action Unit 486; Corrective Action Site 71-23-001-71DT," 22 March. Las Vegas, NV.**



**Figure A.7-4**  
**Double Tracks RADSAFE Area CAS 71-23-001-71DT**  
**EM61 Top Coil**

Feature 6



**Figure A.7-5**  
**Double Tracks RADSAFE Area GPR Excavation Examples**

## **Attachment 2**

### **“Methodology for Determining Preliminary Action Levels for CAU 407, Roller Coaster RADSAFE Area” (Adams, 1998C)**



# Memorandum

To: Robert L. McCall Date: June 16, 1998

From: Steven R. Adams *SR* Project No. 772847.010201

Subject: **METHODOLOGY FOR DETERMINING PRELIMINARY ACTION LEVELS FOR CAU 407, THE ROLLER COASTER RADSAFE AREA**

## Introduction

The Nevada Division of Environmental Protection (NDEP) has requested that a preliminary action level (PAL) be established for on-site field screening of soil samples. In addition, NDEP requests that the method used for determining the PAL and the results of this method be sent to them prior to drilling activities. This memorandum presents a methodology for determining an on-site field screening PAL for gross alpha activity, gross beta activity, and gamma activity at the Roller Coaster Radsafe Area (RCRSA). The PAL determination will be performed one time and will be done prior to starting field work. The PAL determination is a separate task from the daily field instrument background checks that are performed to check consistency in instrument response.

A PAL is defined such that the probability of a false positive or false negative decision on whether a soil sample is contaminated above background will not exceed 5 percent. A soil sample with activity exceeding any PAL requires that the information be documented and the investigation to be continued to delineate the extent of the contamination. Additionally, the information may also be used to select discretionary samples to be submitted to an analytical laboratory.

## Methodology

Twenty surface soil samples will be taken from an area (approximately 75 feet by 75 feet) that is south of Browne's Lake Road and west of Main Road (Attachment 1). The sampling location is in the vicinity of the RCRSA. However, the sampling location is up gradient and away from the traffic routes used during the RCRSA operational period. The sampling location should ensure that the radionuclide concentration in the soil is not significantly different from soil samples taken at other background locations in Nevada.

Each of the twenty soil samples will be surveyed for gross alpha activity, gross beta activity, and gamma activity. The gross alpha and the gross beta activity measurements will be taken with the NE Technology "Electra" alpha/beta survey instrument calibrated to plutonium-239/240 and strontium/yttrium-90 in units of disintegrations per minute per 100 square

R. McCall

2

June 16, 1998

centimeters (dpm/100cm<sup>2</sup>). The gross alpha and gross beta activity measurements will be recorded by placing the detector at the soil surface for a one minute integrated count. The gamma measurements will be taken with a Field Instrument for Detecting Low Energy Radiation (FIDLER) calibrated to americium-241 in units of counts minute (cpm). The measurements will be recorded at the soil surface by placing the FIDLER detector at the soil surface for a one minute count or until the count rate stabilizes. The results of all alpha, beta, and gamma measurements will be recorded.

The average activity for the twenty gross alpha, gross beta, and gamma measurements will be calculated and recorded. The standard deviation for each set of twenty measurements will be defined as equal to the square root of the average activity. The PAL for each type of activity will be equal to the average activity plus two times the standard deviation of the average activity.

### **Conclusion**

A method has been presented for determining the PALs at the RCRSA. The results of this method will be sent to NDEP prior to drilling activities being conducted. The PALs will ensure that there is only a 5 percent probability that a soil sample with a background concentration of radionuclides will be discerned as having contamination. In addition, the PAL will ensure that there is only a 5 percent probability that a soil sample with contamination will be discerned as having a background concentration of radionuclides.

cc: Mike O'Hagan  
Mike Foley  
Laura Tryboski  
Jared Dominick  
Chrono Files

## **Appendix B**

### **Project Organization**

### ***B.1.0 Project Organization***

---

The DOE/NV Project Manager is Janet Appenzeller-Wing, telephone (702) 295-0461.

The names of the project Health and Safety Officer and the Quality Assurance Officer can be found in the appropriate DOE/NV plan. However, personnel are subject to change, and it is suggested that the Project Manager be contacted for further information. The Task Manager will be identified in the FFACO Biweekly Activity Report prior to the start of field activities.

**Appendix C**

**NDEP Document Review Sheet**

## NEVADA ENVIRONMENTAL RESTORATION PROJECT

### DOCUMENT REVIEW SHEET

(Page 1 of 1)

1. Document Title/Number: <u>Draft Corrective Action Investigation Plan for CAU 486 Double Tracks RADSAFE Area, Nellis Air Force Range, Nevada</u>			2. Document Date: <u>August 1998</u>	
3. Revision Number: <u>0</u>			4. Originator/Organization: <u>IT Corporation</u>	
5. Responsible DOE/NV ERP Subproject Mgr.: <u>Kevin Cabbie</u>			6. Date Comments Due: <u>September 25, 1998</u>	
7. Review Criteria: <u>Full</u>				
8. Reviewer/Organization/Phone No.: <u>NDEP</u>			9. Reviewer's Signature:	

10. Comment Number/ Location	11. Type*	12. Comment	13. Comment Response	14. Accept
1) Page 19, <a href="#">Section 3.3</a> Preliminary Action Levels, 3 <sup>rd</sup> Bulleted Item		The Nuclear Regulatory Commission (NRC), Multi-Agency Radiation Survey and Site Investigation Manual (MARSSIM) should not be listed as a source of preliminary action levels unless the MARSSIM method is to be used for determining appropriate clean-up levels. If MARSSIM is to be used, this should also be indicated elsewhere in this plan.	The MARSSIM was incorrectly referenced as a source for supplying PALs. To more adequately describe the use of the MARSSIM in regards to preliminary action levels for radioactive COPCs, <a href="#">Section 3.3.3</a> was added to the CAIP with the following text: "The preliminary action levels for radioactive contaminants of potential concern will be defined in accordance with the guidance described in the Multi-Agency Radiation Survey and Site Investigation Manual (MARSSIM) (NRC, 1997). The MARSSIM provides detailed guidance for designing, conducting, and documenting radiological surveys. MARSSIM provides guidance on how to evaluate survey results prior to making a decision regarding whether or not the radionuclide concentration at a site exceeds the concentration in a background area. The assumption will be made that any difference in the distribution of the radionuclide concentrations between the background area and the areas of concern within the DTRSA is due to the presence of residual radioactivity in addition to background. As stated in Section 8.4.1 of MARSSIM, some DTRSA analytical results may be larger than some background area results, while still not exceeding background concentrations. The result of the hypothesis testing determines whether or not the areas of concern within the DTRSA are deemed to exceed the background area."	Yes

<sup>a</sup> Comment Types: M = Mandatory, S = Suggested.

## Distribution

\*Provide copy in distribution of Rev. 0 and subsequent revisions if applicable. Copies of the approved revision only should be distributed to the others.

Paul J. Liebendorfer  
State of Nevada  
Bureau of Federal Facilities  
Division of Environmental Protection  
333 W. Nye Lane, Room 138  
Carson City, NV 89706-0851

2 (Controlled)\*

Supervisor  
State of Nevada  
Bureau of Federal Facilities  
Division of Environmental Protection  
555 E. Washington, Suite 4300  
Las Vegas, NV 89101

1 (Controlled)\*

Sabrina Lawrence  
Environmental Restoration Division  
DOE/Nevada Operations Office  
P.O. Box 98518, M/S 505  
Las Vegas, NV 89193-8518

1 (Controlled)\*

Janet Appenzeller-Wing  
Environmental Restoration Division  
DOE/Nevada Operations Office  
P.O. Box 98518, M/S 505  
Las Vegas, NV 89193-8518

1 (Uncontrolled)\*

Kevin Cabble  
Environmental Restoration Division  
DOE/Nevada Operations Office  
P.O. Box 98518, M/S 505  
Las Vegas, NV 89193-8518

1 (Uncontrolled)\*

Technical Information Resource Center  
DOE/Nevada Operations Office  
P.O. Box 98518, M/S 505  
Las Vegas, NV 89193-8518

1 (Uncontrolled)

U.S. Department of Energy  
Office of Scientific and Technical Information  
175 Oak Ridge Turnpike  
P.O. Box 62  
Oak Ridge, TN 37831

1 (Uncontrolled, electronic)

Manager Southern Nevada FFACO Public Reading Room  
P.O. Box 98521, M/S NLV040  
Las Vegas, NV 89193-8521

1 (Controlled)

1 (Uncontrolled)

Manager Northern Nevada FFACO  
Public Reading Room  
c/o Rosa Silver  
IT Corporation  
P.O. Box 93838  
Las Vegas, NV 89193

1 (Uncontrolled)

Rosa Silver  
IT Corporation  
P.O. Box 93838  
Las Vegas, NV 89193

1 (Controlled)

Steve Nacht  
Bechtel Nevada  
P.O. Box 98521, M/S NTS306  
Las Vegas, NV 89193-8521

1 (Uncontrolled)\*

Jerry Bonn  
Bechtel Nevada  
P.O. Box 98521, M/S NTS306  
Las Vegas, NV 89193-8521

1 (Uncontrolled)\*

U.S. Air Force Liaison Office  
DOE/Nevada Operations Office  
P.O. Box 98518, M/S 505  
Las Vegas, NV 89193-8518

2 (Uncontrolled)\*

Cheryl Rodriguez  
HSI GeoTrans  
P.O. Box 93838  
Las Vegas, NV 89193

1 (Uncontrolled)\*

Mark DiStefano  
IT Corporation  
P.O. Box 93838  
Las Vegas, NV 89193

1 (Uncontrolled)\*

Mary Todd  
SAIC  
P.O. Box 93838  
Las Vegas, NV 89193

1 (Uncontrolled)\*

Dawn Arnold  
SAIC  
P.O. Box 93838  
Las Vegas, NV 89193

1 (Uncontrolled)\*

IT Corporation Central Files  
IT Corporation  
P.O. Box 93838  
Las Vegas, NV 89193

1 (Uncontrolled)\*

Dustin Wilson  
SAIC  
P.O. Box 93838  
Las Vegas, NV 89193

1 (Uncontrolled)