

ANL/ET/CP-91938  
CONF-970758--

**RECENT ADVANCES IN PROCESSING OF Ag-CLAD Bi-2223 SUPERCONDUCTORS\***

U. Balachandran  
Energy Technology Division  
Argonne National Laboratory  
Argonne, IL 60439

M. Lelovic, T. Deis, and N. G. Eror  
Dept. of Materials Science and Engineering  
University of Pittsburgh  
Pittsburgh, PA 15261

P. Haldar and V. Selvamanickam  
Intermagnetics General Corporation  
Latham, NY 12110

RECEIVED  
SEP 02 1997  
OSTI

August 1997

The submitted manuscript has been created by the University of Chicago as Operator of Argonne National Laboratory ("Argonne") under Contract No. W-31-109-ENG-38 with the U.S. Department of Energy. The U.S. Government retains for itself, and others acting on its behalf, a paid-up, nonexclusive, irrevocable worldwide license in said article to reproduce, prepare derivative works, distribute copies to the public, and perform publicly and display publicly, by or on behalf of the Government.

DISTRIBUTION OF THIS DOCUMENT IS UNLIMITED

**MASTER**

To be published in Proc. Cryogenic Engineering Conference and International Cryogenic Materials Conference (CEC/ICMC), Portland, OR, July 28-Aug. 1, 1997.

\*Work is supported by the U.S. Department of Energy, Energy Efficiency and Renewable Energy, as part of a program to develop electric power technology, under Contract W-31-109-Eng-38.

## **DISCLAIMER**

This report was prepared as an account of work sponsored by an agency of the United States Government. Neither the United States Government nor any agency thereof, nor any of their employees, makes any warranty, express or implied, or assumes any legal liability or responsibility for the accuracy, completeness, or usefulness of any information, apparatus, product, or process disclosed, or represents that its use would not infringe privately owned rights. Reference herein to any specific commercial product, process, or service by trade name, trademark, manufacturer, or otherwise does not necessarily constitute or imply its endorsement, recommendation, or favoring by the United States Government or any agency thereof. The views and opinions of authors expressed herein do not necessarily state or reflect those of the United States Government or any agency thereof.

**DISCLAIMER**

**Portions of this document may be illegible  
in electronic image products. Images are  
produced from the best available original  
document.**

## RECENT ADVANCES IN PROCESSING OF Ag-CLAD Bi-2223 SUPERCONDUCTORS

U. Balachandran,<sup>1</sup> M. Lelovic,<sup>2</sup> T. Deis,<sup>2</sup> N. G. Eror,<sup>2</sup>  
P. Haldar,<sup>3</sup> and V. Selvamanickam<sup>3</sup>

<sup>1</sup>Argonne National Laboratory, Argonne, IL 60439, USA

<sup>2</sup>University of Pittsburgh, Pittsburgh, PA 15261, USA

<sup>3</sup>Intermagetics General Corporation, Latham, NY 12110, USA

### ABSTRACT

Enhancements in the transport current properties of long lengths of multifilament Ag-sheathed  $(\text{Bi,Pb})_2\text{Sr}_2\text{Ca}_2\text{Cu}_3\text{O}_y$  (Bi-2223) superconducting tapes were made as a function of increased packing density of precursor powder, improved mechanical deformation, and adjusted cooling rate. Improved processing parameters had a pronounced effect on the transport critical current ( $I_c$ ) of the superconducting tapes. At 77 K and zero applied magnetic field, an  $I_c$  of 60 A was obtained in short length samples (4 cm), an  $I_c$  of 54 A in a 164 m length, and 18 A in a 1,260 m length. These enhancements were based on the increase in packing density accompanied with improved mechanical deformation and cooling schedule. Maximum critical current values were two to three times higher in slow-cooled tapes than in fast-cooled tapes.

### INTRODUCTION

Continuing as the most promising approach for fabricating wires and tapes is the powder-in-tube (PIT) process. The critical current density ( $J_c$ ) of Ag-sheathed  $(\text{Bi,Pb})_2\text{Sr}_2\text{Ca}_2\text{Cu}_3\text{O}_y$  (Bi-2223) superconducting tapes is the most important factor for practical applications. The Ag-clad Bi-2223 tapes now being used in demonstrations of a prototype HTS motor, transmission cable, and fault current limiter are performing reasonably well.<sup>1,2</sup> However, their applicability in large electrical equipment is presently limited to the temperature range of <30 K because of their low overall  $J_c$  and susceptibility to magnetic fields.

Within the past three years, several research groups reported that in Ag-sheathed Bi-2223 superconducting tapes, the supercurrent is transported in a very thin region at the silver superconductor interface.<sup>3-12</sup> The bulk of the superconductor core does not contribute to the total critical current ( $I_c$ ). Very thin layers ( $\approx 2-3 \mu\text{m}$ ) of superconductor in a processed tape were able to support a transport current that translated into a  $J_c$  value  $> 10^5 \text{ A/cm}^2$  at 77 K.<sup>3-5</sup> Furthermore, tapes were produced with the same superconductor total cross sectional area but different lengths of interface with the Ag sheath.<sup>6</sup> The  $I_c$  was shown to be directly proportional to the relative amount of superconductor/Ag interface and was expressed as a linear function of the interface

perimeter length (IPL). These results were consistent with observations that <10% of the 2223 superconductor transports the supercurrent in the silver-sheathed superconducting tapes.<sup>7-12</sup> Therefore, low overall  $J_c$  values can be expected to increase by improving the processing parameters.

Experimental results for  $J_c$  as a function of temperature and applied magnetic field in BSCCO/Ag wires and tapes showed that  $J_c$  was very anisotropic.<sup>13-15</sup> In Bi-2223 tapes, for the same average  $J_c$  value, the effective pinning energy ( $U_{eff}$ ) for H perpendicular to 'c' is two orders of magnitude higher than that for H parallel to 'c'.<sup>15</sup> Effort is currently focused on circumventing the problem of flux creep by adopting various metallurgical techniques, for example, precipitating secondary phases and introducing fine-scale microstructural defects.<sup>16-18</sup>

Parrel et al.<sup>19</sup> observed that changing the cooling rate had a significant effect on transport critical current. The partial decomposition of the Bi-2223 phase during the slow cooling was used as the basis for rationalizing the results. The 2212 phase ( $Bi_2Sr_2CaCu_2O_x$ ) formed by decomposition had a very different morphology than that of the residual 2212 phase and affects the connectivity of the core. Tetenbaum and Maroni<sup>20</sup> showed that slow cooling increases the oxygen content of the Bi-2223 phase. This increase in oxygen content may contribute to the enhanced critical current density observed during slow cooling. In a postannealing study, Nomura et al.<sup>21</sup> observed that the  $J_c$  values of tapes increase with an increase in oxygen content. In our previous study,<sup>22</sup> changing the cooling rate showed a pronounced effect on the transport current of Bi-2223 superconducting tapes. The thin layer of superconductor adjacent to the Ag sheath was under compression during fast cooling, and the compressive stress caused microcracking and affected the interconnectivity of superconductor grains in the thin layer next to the silver sheath. This changed the current path through the high-critical-current-density region in the superconductor.

## EXPERIMENTAL PROCEDURE AND RESULTS

In the first step before the mechanical processing, packing density of the precursor powder was varied. The second step was to improve the mechanical processing of multifilament tapes. The third step was related to improving the heat treating schedule. A series of experiments was designed to study these factors. Multifilament Ag-sheathed Bi-2223 tapes were made by the PIT technique with precursor powders having the overall stoichiometry of Bi-2223. The precursor powder contained 2212 (Pb added),  $Ca_2PbO_4$ , and alkaline earth cuprate phases. Before packing into Ag tubes, the powder had an average particle size of  $\approx 3-5 \mu m$ . Packing density in the Ag tubes was varied by using precursor powder, as well as precursor powder prepressed into billets, that was then placed in the silver tubes. The precursor powder was packed into the silver tubes at a density of  $\approx 2.25 g/cm^3$ , while the precursor rods were prepressed into billets of  $\approx 3.5 g/cm^3$  (low-packing-density precursor rod) and  $\approx 4.5 g/cm^3$  (high-packing-density precursor rod). As seen in Figure 1, the higher packing density resulted in higher  $I_c$  values when heat treated at  $820^\circ C$ . These higher  $I_c$  values were maintained uniformly over a length of 1.45 m (see Figure 2).

After packing, the tubes were drawn and rolled to a tape that was  $\approx 200 \mu m$  thick. The mechanical deformation schedule was also varied. The cross-sectional area of each sample was observed by scanning electron microscopy (SEM); compositional analysis was accomplished by energy-dispersive spectroscopy (EDS). Figure 3 is a composite of low-magnification SEM images showing the effect of mechanical deformation on the cross sections of two multifilament tapes. Improved mechanical processing of the high-density precursor rod showed a pronounced effect on the uniformity of silver/superconductor interface. The standard mechanical processing consisted of  $> 10\%$  reduction per pass, while the improved mechanical processing reduced the rate of mechanical deformation to

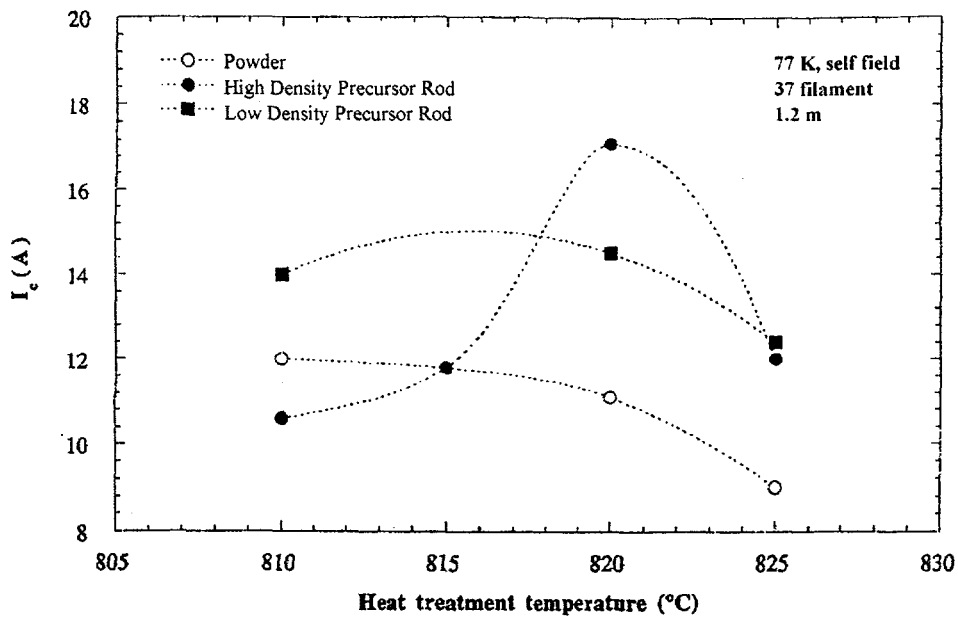


Figure 1. Transport critical current ( $I_c$ ) as a function of heat treatment temperature for 1.2-m-long tapes with various precursor packing densities.

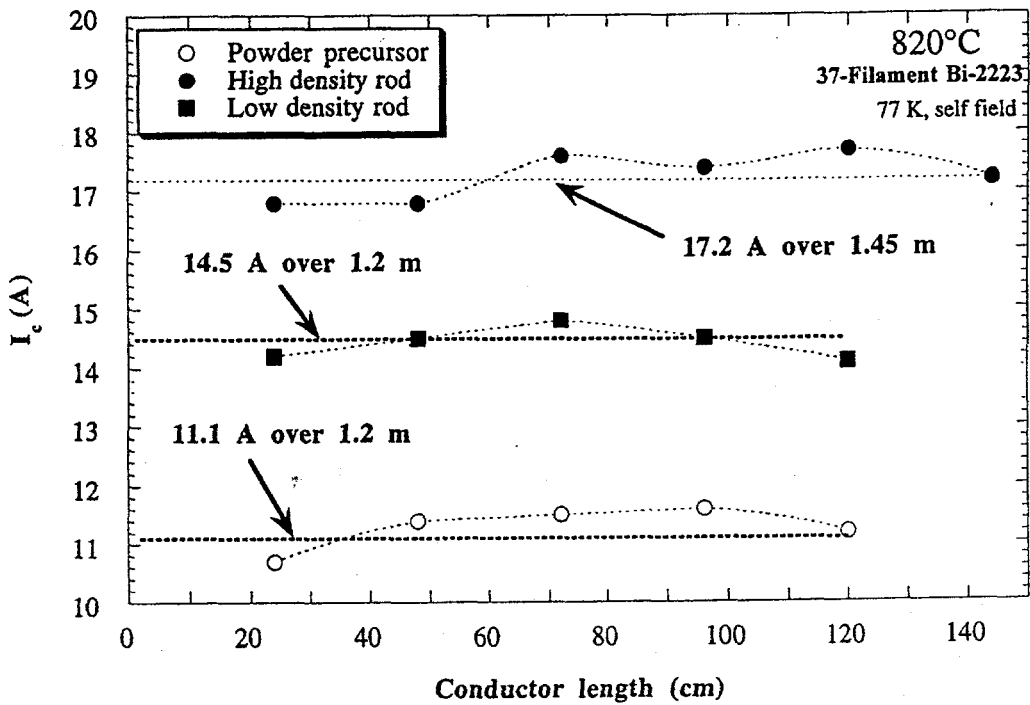
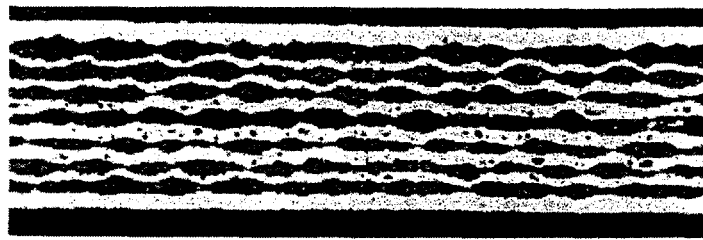
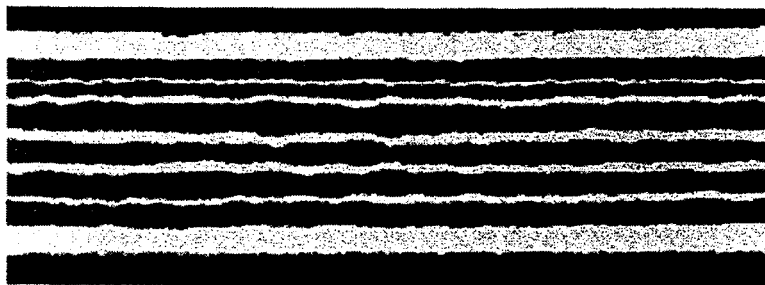


Figure 2.  $I_c$  along 1.2 - 1.45-m-long tapes with various precursor packing densities.

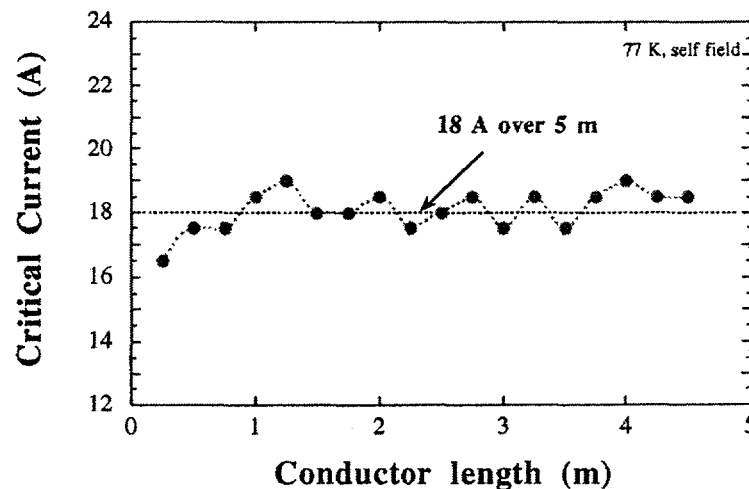


*Consolidated  
Precursor Rod  
Standard  
Mechanical  
Processing  
 $I_c = 18$  to  $20$  A*



*Consolidated  
Precursor Rod  
Improved  
Mechanical  
Processing  
 $I_c = 36$  A*

**Figure 3.** SEM photomicrographs of multifilament tapes showing the effect of improved mechanical processing. SEM photomicrograph of tapes processed under standard mechanical deformation is also shown for comparison.



*Consolidated Precursor Rod  
Standard Mechanical Processing*

**Figure 4.** Uniform  $I_c$  values along a 5-m-long tape fabricated with consolidated precursor powder rod in the silver tube.

< 10% reduction. Again, the  $I_c$  values were quite uniform, as shown in Figure 4 for a 5-m length of tape. The tapes were heat treated in reduced oxygen partial pressure under the following schedule:

1. Heating to  $\approx 820^\circ\text{C}$  at a rate of  $\approx 2^\circ/\text{min}$ ,
2. Holding at  $820^\circ\text{C}$  for 50 h, and
3. Cooling: standard cool ( $1\text{-}2^\circ/\text{min}$ ), slow cool from  $820$  to  $725^\circ\text{C}$ , and slow cool from  $820$  to  $790^\circ\text{C}$ .

The transport critical current  $I_C$  (77 K, self-field, 1  $\mu\text{V}/\text{cm}$  criterion) was measured by a conventional four-probe method. Figure 5 shows the effect of cooling rate on the  $I_C$  value for 1.2-m-long samples. Table 1 summarizes the best transport critical current values achieved for the multifilament tapes.

Slow cooling improved the transport current properties by a factor of 2 to 3 over that of the previous standard cooling rate. The faster cooling rate played a dominant role in reducing the current-carrying capacity of samples. During fast cooling, the thin layer of superconductor next to the silver sheath is subjected to thermal stresses. The thermal gradient between the central core of superconductor and the silver sheath tends to exert compression on the thin layer next to the silver sheath. This affects the alignment and interconnectivity of 2223 grains in this region and changes the current path through the superconductor. Misaligned c-axes and bent or curved grains increase the percolative path for current flow,<sup>22</sup> and weak links along the "a-b" planes force the current to flow along the c-axis of the 2223 phase. In extreme cases, compression caused by a thermal gradient can cause microcracking in this layer, which is detrimental to current transport. Control of present processing parameters results in consistent  $I_C$  values for long lengths of superconducting tape. This can be seen in Figure 6 for 17 manufacturing runs of 100 to 150-m lengths of Bi-2223 tapes with  $I_C$  values above 20 A.

## CONCLUSIONS

Improvements in the transport current properties in long lengths of multifilament Ag-sheathed  $(\text{Bi,Pb})_2\text{Sr}_2\text{Ca}_2\text{Cu}_3\text{O}_y$  (Bi-2223) superconducting tapes were made by varying mechanical and thermal parameters during tape processing. The packing density of precursor powder, improved mechanical deformation, and cooling rate were all parameters that had a pronounced effect on the critical transport current ( $I_C$ ) of the superconducting tapes. At 77 K and zero applied magnetic field, an  $I_C$  of 60 A was obtained in a short sample (4 cm), an  $I_C$  of 54 A was seen in a 164-m length, and 18 A was observed in a 1260-m length. These enhancements were based on the increase in packing density, accompanied by an improved mechanical deformation and cooling schedule. Maximum critical current values were two to three times higher in slow-cooled tapes than in fast-cooled tapes.

## ACKNOWLEDGMENTS

Work was supported by the U.S. Department of Energy (DOE), Energy Efficiency and Renewable Energy, as part of a DOE program to develop electric power technology, under Contract W-31-109-Eng-38.

## REFERENCES:

1. U. Balachandran, A.N. Iyer, P. Haldar and L.R. Motowidlo, *Journal of Metals* 9 (1993) 54-57.
2. P. Haldar, J.G. Hoehn Jr., L.R. Motowidlo, U. Balachandran, and Y. Iwasa, *Advances in Cryogenic Engineering* 40 A (1994) 313.
3. M. Lelovic, P. Krishnaraj, N.G. Eror, and U. Balachandran, *Physica C* 242, (1995) 246-250.
4. M. Lelovic, P. Krishnaraj, N.G. Eror, and U. Balachandran, *Superconductor Science and Technology* 8 (5) (1995) 334-340.
5. M. Lelovic, P. Krishnaraj, N.G. Eror, A.N. Iyer, U. Balachandran, *Superconductor Science and Technology* 9 (3) (1996) 201-204.

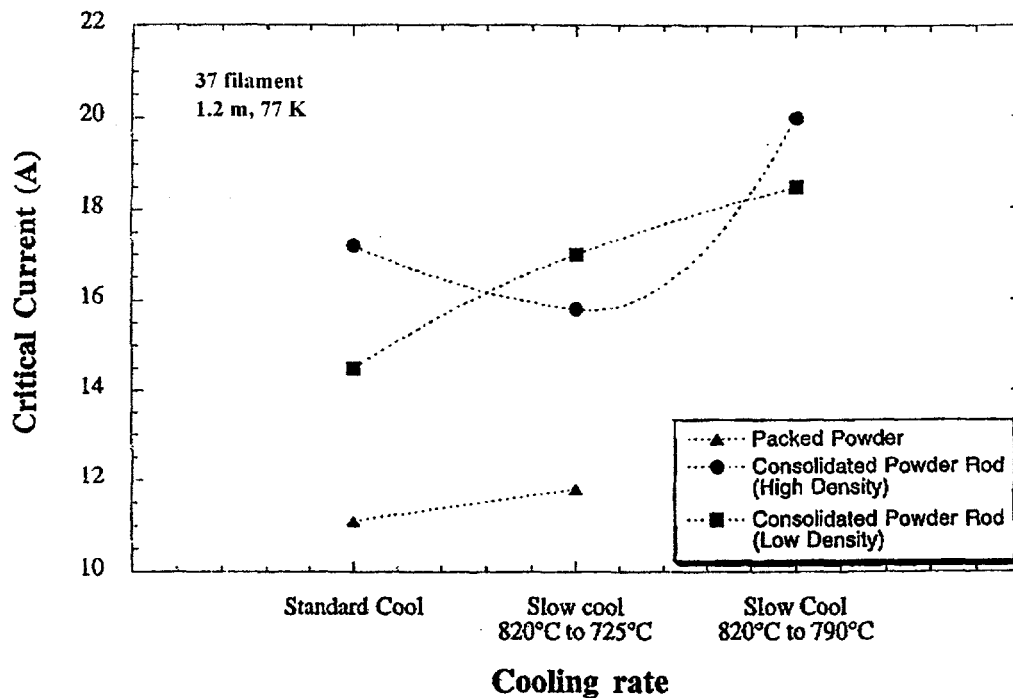


Figure 5. Transport critical current along a 1.2-m-long tape as a function of cooling rate and precursor powder packing density.

TABLE 1. Transport critical current,  $I_c$ ; engineering critical current density,  $J_e$ ; and critical current density,  $J_c$ ; for multifilament tape as a function of conductor length.

Conductor Length (m)	$I_c$ (A)	$J_e$ (A/cm <sup>2</sup> )	$J_c$ (A/cm <sup>2</sup> )
0.04	60	6,400	25,000
164	54	6,000	24,000
1260	18	3,500	12,000

6. B.C. Prorok, M. Lelovic, N.G. Eror, U. Balachandran, T.A. Deis, P. Krishnaraj, and A. N. Iyer, "Optimization of Critical Current Density for BSCCO (2223) OPIT Tapes by Increasing Contact Length Between the Core and Sheath," in *Advances in Cryogenic Engineering*, ed. L. T. Summers, **42**, 739 (1997).
7. S.P. Ashworth and B.A. Glowacki, *Physica C* **226** (1994) 159-164.
8. D.C. Larbalestier, X.Y. Cai, Y. Feng, H. Edelman, A. Umezawa, G.N. Riley Jr., and W.L. Carter, *Physica C* **221** (1994) 299-303.
9. H.K. Liu, R.K. Wang, and S.X. Dou, *Physica C* **229** (1994) 39-46.
10. Y. Feng and D.C. Larbalestier, *Interface Science* **1** (1994) 401-410.
11. D.C. Larbalestier, X.Y. Cai, H. Edelman, M.B. Field, Y. Feng, J. Parrell, A. Pashitski, and A. Polyanskii, *J. of Metals* **V 46**, No. 12 (1994) 20-22.
12. U. Welp, D.O. Gunter, G.W. Crabtree, J.S. Luo, V.A. Maroni, W.L. Carter, V.K. Vlasko-Vlaskov, and V.I. Nikitenko, *Appl. Phys. Letters* **66-10** (1995) 1270.
13. M.P. Maley, P.J. Kung, J.Y. Coulter, W.L. Carter, G.N. Riley, and M.E. McHenry, *Phys. Rev. B* **V 45**, No. 13 (1992) 7566-7569.

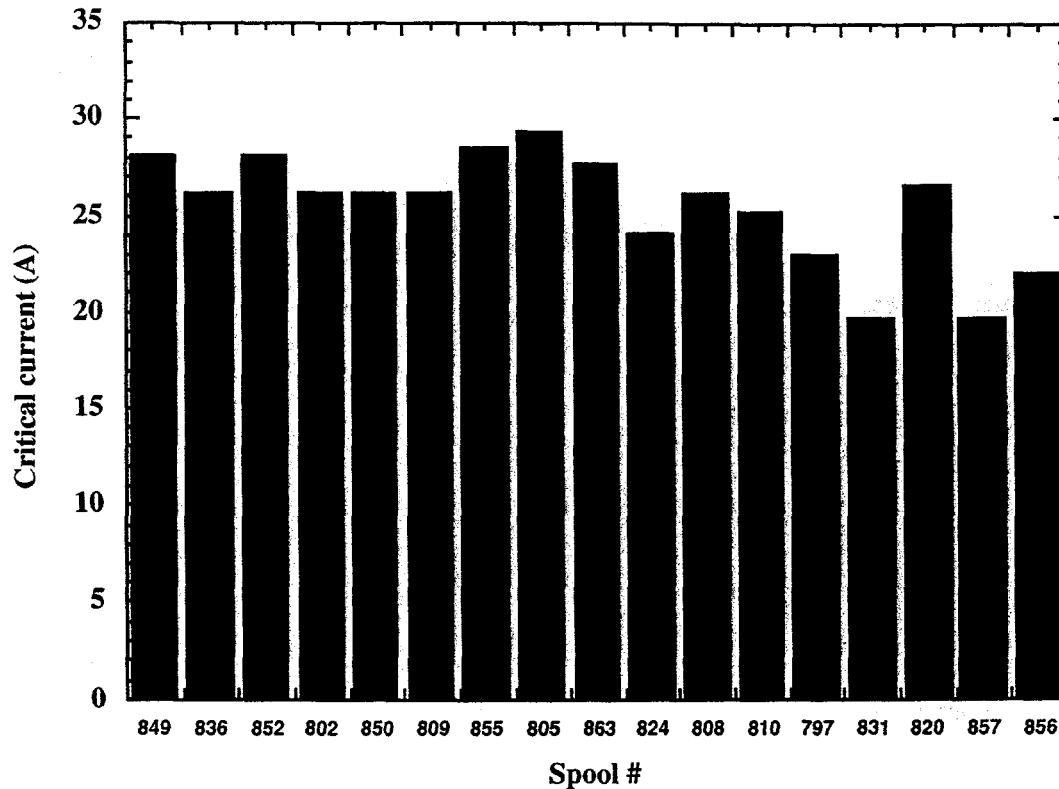


Figure 6. Distribution of  $I_c$  values for 17 different manufacturing runs of 100 to 150-m-long tapes.

14. M.E. McHenry, P.J. Kung, M.P. Maley, J.O. Willis, and J.Y. Coulter, *IEEE Transactions on Applied Superconductivity*, V3 No. 1 (1993) 1143-1146.
15. P.J. Kung, M.E. McHenry, M.P. Maley, P.H. Kes, D.E. Laughlin, and W.W. Mullins, *Physica C* 249 (1995) 53-68.
16. L.N. Bulaevskii, J.R. Clem, L.I. Glazmann, and A.P. Malozemoff, *Phys. Rev. B* 45 (1992) 1231.
17. S.E. Babcock and D.C. Larbalestier, *J. Phys. Chem. Solids* V 55 No. 10 (1994) 1125-1136.
18. B. Hensel, G. Grasso, and R. Flukiger, *Phys. Rev. B* 51 (1995) 15456-15473.
19. J.A. Parrel, D.C. Larbalestier, and S.E. Dorris, *IEEE Transactions on Applied Superconductivity*, Vol. 5, No. 2 (1995) pp. 1275-1278.
20. M. Tetenbaum and V.A. Maroni, *Physica C* 260 (1996) 71-80.
21. S. Nomura, H. Fuke, H. Yoshino, and K. Ardo, *Superconductor Science and Technology* 6 (1993) 858-862.
22. M. Lelovic, T. Deis, N.G. Eror, U. Balachandran, and P. Haldar, *Superconductor Science and Technology* 9 (11) (1996) 965-970.