

CONF-961110--4

LBNL-39508  
UC-406



# ERNEST ORLANDO LAWRENCE BERKELEY NATIONAL LABORATORY

## Amorphous Silicon/Crystalline Silicon Heterojunctions for Nuclear Radiation Detector Applications

J.T. Walton, W.S. Hong, P.N. Luke, N. W. Wang,  
and F.P. Ziemba

**Engineering Division**

RECEIVED

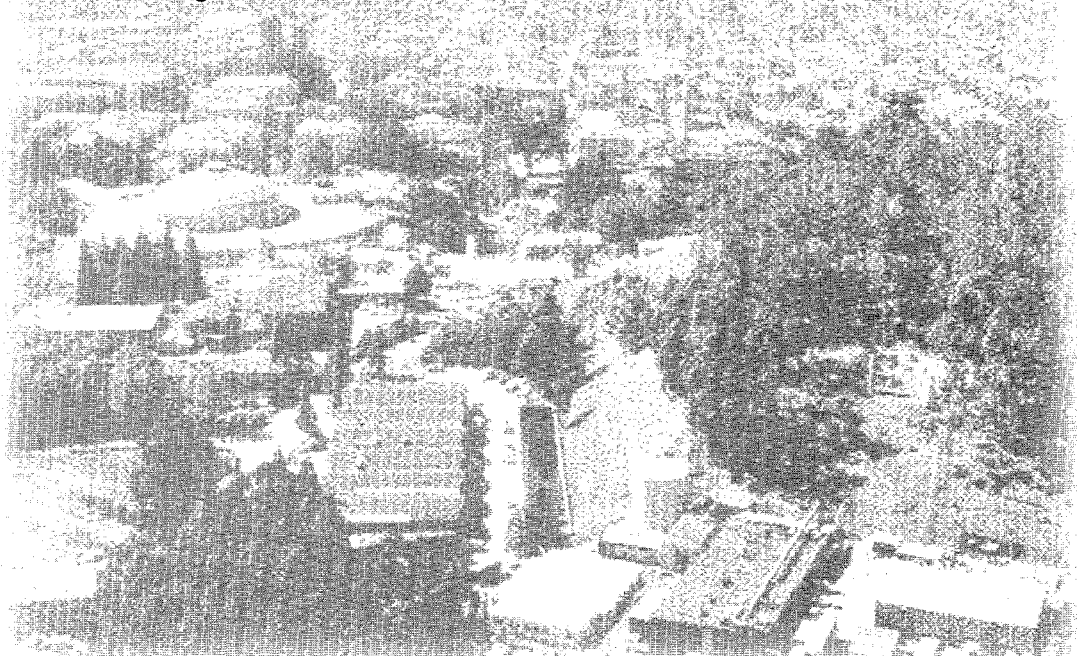
MAR 25 1997

OSTI

DISTRIBUTION OF THIS DOCUMENT IS UNLIMITED

October 1996  
Presented at the  
*1996 IEEE Nuclear  
Science Symposium*,  
Los Angeles, CA,  
November 12-15, 1996,  
and to be published in  
the Proceedings

MASTER 



#### DISCLAIMER

This document was prepared as an account of work sponsored by the United States Government. While this document is believed to contain correct information, neither the United States Government nor any agency thereof, nor The Regents of the University of California, nor any of their employees, makes any warranty, express or implied, or assumes any legal responsibility for the accuracy, completeness, or usefulness of any information, apparatus, product, or process disclosed, or represents that its use would not infringe privately owned rights. Reference herein to any specific commercial product, process, or service by its trade name, trademark, manufacturer, or otherwise, does not necessarily constitute or imply its endorsement, recommendation, or favoring by the United States Government or any agency thereof, or The Regents of the University of California. The views and opinions of authors expressed herein do not necessarily state or reflect those of the United States Government or any agency thereof, or The Regents of the University of California.

Ernest Orlando Lawrence Berkeley National Laboratory  
is an equal opportunity employer.

LBNL-39508  
UC-406

**Amorphous Silicon/Crystalline Silicon Heterojunctions for  
Nuclear Radiation Detector Applications**

J.T. Walton, W.S. Hong, P.N. Luke, and N. W. Wang

Engineering Division  
Ernest Orlando Lawrence Berkeley National Laboratory  
University of California  
Berkeley, California 94720

F.P. Ziemba

Quantrad Sensor, Inc.  
2360 Owen Street  
Santa Clara, CA 95054

October 1996

This work was supported in part by the U.S. Department of Energy under Contract No. DE-AC03-76SF00098,  
and DOE STTR Grant No. 02066-95-I.

**DISCLAIMER**

**Portions of this document may be illegible  
in electronic image products. Images are  
produced from the best available original  
document.**

# Amorphous Silicon/Crystalline Silicon Heterojunctions for Nuclear Radiation Detector Applications

J.T. Walton, W.S. Hong, P.N. Luke and N.W. Wang

Lawrence Berkeley National Laboratory  
1 Cyclotron Road, Berkeley, CA 94720

F.P. Ziemba

Quantrad Sensor, Inc.  
2360 Owen Street, Santa Clara, CA 95054

## Abstract

Results on the characterization of the electrical properties of amorphous silicon films for the three different growth methods, RF sputtering, PECVD, and LPCVD are reported. The performance of these a-Si films as heterojunctions on high resistivity p-type and n-type crystalline silicon is examined by measuring the noise, leakage current and the alpha particle response of 5 mm diameter detector structures. It is demonstrated that heterojunction detectors formed by RF sputtered films and PECVD films are comparable in performance with conventional surface barrier detectors. The results indicate that the a-Si/c-Si heterojunctions have the potential to greatly simplify detector fabrication. Directions for future avenues of nuclear particle detector development are indicated.

## I. INTRODUCTION

Recently reported work on amorphous silicon/crystalline silicon, a-Si/c-Si, heterojunctions[1] plus our own experience with amorphous semiconductor contacts for Si and Ge radiation detectors[2] suggested that a significant simplification of silicon detector technology could be realized by replacing conventional contacts with heterojunctions.

The principal contact technologies presently used in the fabrication of silicon detectors are either surface barrier or diffused/implanted p-n junctions. Both of these technologies have limitations. The surface barrier technology results in contacts that are extremely fragile. The diffused/implanted junction technology requires high process temperatures that can degrade the carrier generation lifetime in high purity silicon. A-Si/c-Si heterojunctions offer a novel alternative. These heterojunctions can exhibit nearly ideal p-n junction performance and can be grown at very low temperatures[3]. Surprisingly, while amorphous silicon has been studied as a radiation detector material because of its radiation hardness and large-area capability[4], there has been only a very limited amount of work on detector structures based on the a-Si/c-Si system[5].

In the following, we discuss our results on a-Si/c-Si heterojunctions formed via three different deposition techniques: RF sputter deposition, plasma enhanced chemical vapor deposition (PECVD), and low pressure chemical vapor deposition (LPCVD). RF sputter deposition has been used

successfully at LBNL to fabricate a-Ge/c-Ge and a-Si/c-Si heterojunction detectors. PECVD, the standard method used to grow solar cells and thin film transistors, has been used to fabricate segmented radiation detectors on high purity crystalline silicon[6]. LPCVD is commonly used to grow the amorphous silicon that serves as the precursor stage for polycrystalline silicon growth. In addition, the different process temperatures required for RF sputtering (room temperature), PECVD (~200-250°C) and LPCVD (~600°C) may have varying effects on the surface electronic properties of a high resistivity c-Si substrate. These three a-Si film growth techniques span a wide range in deposition temperatures and produce films with distinctly different electronic properties, which are discussed further below.

## II. A-SI FILM CHARACTERISTICS

To characterize the a-Si films, we deposited the films onto glass substrates using each of the three deposition techniques. The deposition conditions were as follows. The RF sputtered films were grown at room temperature with an RF power of 400 W, a pressure of 7.0 mTorr and in ambients of pure Ar or Ar with 17.5% H<sub>2</sub>. The PECVD depositions were carried out with a substrate temperature of 190°C, an RF power of 5-7 W, a pressure of 0.3 Torr and a flow of 40 sccm SiH<sub>4</sub> (undoped film), with the addition of 7.6 sccm 1% Phosphine in Silane (phosphorus-doped, N-type film) or 15.2 sccm 0.5 % Diborane in Helium (boron-doped, P-type film). The LPCVD films were deposited in a furnace at 590°C, a pressure of ~50 Torr, and with a SiH<sub>4</sub> flow of 20 sccm. The deposition times with each technique were selected to produce an a-Si film thickness of ~200 nm.

Coplanar Cr/Au contacts 10 mm long and 1.0 mm apart were then evaporated onto the a-Si films to allow measurement of the film resistivity. From these measurements, we obtained information on the film conductivity dependence on deposition process, doping effects and dominant conduction mechanism. As expected, the three deposition techniques yielded films with distinctly different electronic conductivity.

Our conductivity versus temperature data for the RF sputtered films (both in pure Ar and with 17.5% H<sub>2</sub>) and the LPCVD film are better fitted with a  $1/T^{1/4}$  dependence than a  $1/T$  dependence, which is characteristic of an activation energy type conductance. This indicates that the RF sputtered films

and possibly the LPCVD film conduct via hopping, which is characteristic of highly disordered films with high defect densities ( $\sim 1 \times 10^{18} / \text{cm}^3$ ). The PECVD grown films appear to conduct via an activation type mechanism, which is characteristic of longer range ordered films with lower defect densities ( $\sim 1 \times 10^{15} / \text{cm}^3$ ). Table 1 contains a listing of the parameters used to fit the conductivity data.

Table 1. Summary of a-Si Conductivity Measurements

No.	Deposition Process	Constant	Value	Conductivity (300 K) $\Omega^{-1}\text{-cm}^{-1}$
1	Sputter-Argon	$\sigma_0$ ( $\Omega^{-1}\text{-cm}^{-1}$ )	$5.02 \times 10^4$	$1.5 \times 10^{-6}$
		A ( $\text{K}^{1/4}$ )	98.7	
2	Sputter-Argon+H <sub>2</sub>	$\sigma_0$ ( $\Omega^{-1}\text{-cm}^{-1}$ )	$1.0 \times 10^{29}$	$5.4 \times 10^{-11}$
		A ( $\text{K}^{1/4}$ )	377.2	
3	PECVD-undoped	$\sigma_0$ ( $\Omega^{-1}\text{-cm}^{-1}$ )	15.31	$1.4 \times 10^{-7}$
		$E_A$ (eV)	0.642	
4	PECVD-boron	$\sigma_0$ ( $\Omega^{-1}\text{-cm}^{-1}$ )	0.379	$2.0 \times 10^{-6}$
		$E_A$ (eV)	0.304	
5	PECVD-Phosphorus	$\sigma_0$ ( $\Omega^{-1}\text{-cm}^{-1}$ )	$11.9 \times 10^3$	$3.0 \times 10^{-4}$
		$E_A$ (eV)	0.518	
6	LPCVD-undoped	$\sigma_0$ ( $\Omega^{-1}\text{-cm}^{-1}$ )	$3 \times 10^{24}$	$5.2 \times 10^{-8}$
		A ( $\text{K}^{1/4}$ )	303.3	

Table Notes:

- a) Samples 1, 2, and 6 we assume conduct via hopping; the conductivity is then modeled by:  $\sigma = \sigma_0 \exp(-A/T^{1/4})$ .
- b) Samples 3, 4, and 5, we assume conduct via an activation energy; the conductivity is then modeled by:  $\sigma = \sigma_0 \exp(-E_A/kT)$ .

The results in Table 1 confirm that the three deposition techniques yielded a-Si films with substantially different electronic characteristics. Much of the recent emphasis in a-Si film development has been on improving the film transport properties. But, as discussed in Section V below, the a-Si film transport properties do not appear to be important in a-Si/c-Si contact formation for silicon radiation detector technology.

### III. TEST DIODES

Using the same deposition conditions as employed with the glass substrates, we also deposited  $\sim 200$  nm thick a-Si films onto high resistivity p-type (1,000 and 5,000  $\Omega\text{-cm}$ ) and n-type (5,000  $\Omega\text{-cm}$ ) 375  $\mu\text{m}$  thick silicon wafers (one side polished; 1% HF dip and H<sub>2</sub>O rinse before deposition). Onto these deposited films we then evaporated metals (Al or Cr/Au) to form the a-Si/c-Si heterojunction contact structure, which is shown schematically in Figure 1. Ohmic contacts, p<sup>+</sup> or n<sup>+</sup>, were implanted into the substrates prior to the a-Si film depositions. These contacts ensured that only the a-Si

heterojunction blocking characteristics would be measured in our subsequent tests.

To determine whether photolithographic processes (positive photoresist) have any detrimental effect on the a-Si/c-Si heterojunction properties, we formed the metal contacts on the test samples both with an evaporation mask and with a photolithographic process. For most of the samples prepared, we fabricated at least nine 5 mm diameter diodes.

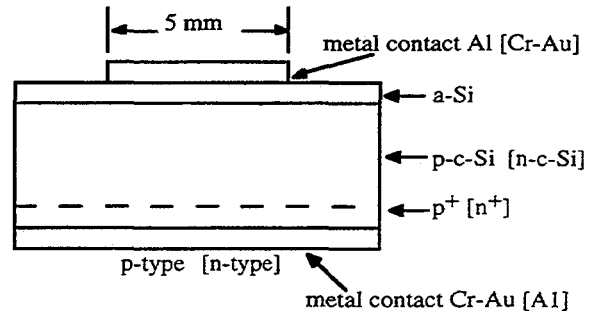


Figure 1. Cross-section of the p-type and [n-type] a-Si heterojunction detectors. The active area of the detector is defined by the 5 mm diameter metal evaporation on the 200 nm thick a-Si film. The n-type device metals etc. are noted in [ ] in the figure. The p<sup>+</sup> [n<sup>+</sup>] ohmic contact was formed by boron [phosphorus] ion implantation, 50 keV,  $2 \times 10^{15}$  ions/cm<sup>2</sup> and annealed at 800 °C for 30 minutes prior to the a-Si film deposition.

### IV. DIODE RESULTS

We first checked each of the heterojunction-based diodes by measuring their leakage current and noise as a function of reverse bias voltage at room temperature. Since the devices fabricated are, in fact, partially depleted charged particle detectors, our procedures followed ANSI/IEEE Std. 300-1988[7]. Our average values from these measurements are summarized in Table 2, while a representative <sup>241</sup>Am alpha spectrum is shown in Figure 2. There was no appreciable difference in the heterojunction diodes formed by evaporation through a metal mask and those with the metal contacts formed by photoresist patterning. The values in the table are, therefore, averaged over both sets, typically a total of 18 diodes. From these results, it can be seen that the a-Si heterojunctions formed by RF sputtering in Ar yielded the best diode performance on p-type substrates, while diborane-doped PECVD yielded the best diode performance on n-type.

### V. DISCUSSION

Table 3 summarizes our assessment of the a-Si/c-Si heterojunction properties at room temperature of the various a-Si film depositions that we performed on three different silicon substrates. While not denoted as such in Table 2 or 3, the RF sputtered films are "undoped" in that phosphorus or boron dopants have not been added to alter the film conductivity, as has been demonstrated by Paul et. al. [8].

Table 2. Summary of  $^{241}\text{Am}$  alpha measurements

Process	P-type, 1,000 $\Omega\text{-cm}$				P-type, 5,000 $\Omega\text{-cm}$				N-type, 5,000 $\Omega\text{-cm}$			
	Bias V	I $\mu\text{A}$	$\Delta E_\alpha$ keV	$\Delta E_p$ keV	Bias V	I $\mu\text{A}$	$\Delta E_\alpha$ keV	$\Delta E_p$ keV	Bias V	I $\mu\text{A}$	$\Delta E_\alpha$ keV	$\Delta E_p$ keV
RF Argon	60	0.68	31.3	11.9	80	0.70	27.0	8.6	30	1.50	35.7	27.0
RF Argon + $\text{H}_2$	60	3.20	30.3	19.5	90	0.60	31.4	8.6	14	0.41	47.6	34.6
PECVD-undoped	60	4.80	27.0	18.4	90	0.86	33.5	21.6	leaky	leaky	leaky	leaky
PECVD-boron	---	---	---	---	---	---	---	---	20	0.16	24.9	10.8
PECVD-phosphorus	60	0.72	32.2	12.2	80	0.77	31.3	10.2	---	---	---	---
LPCVD-undoped	60	2.80	35.6	32.4	90	10.0	34.6	24.8	leaky	leaky	leaky	leaky

Table Notes:

- The measurements were performed with an amplifier peaking time of 0.8  $\mu\text{sec}$ .
- $\Delta E_\alpha$  and  $\Delta E_p$  are the Full Width Half Maximum (FWHM) values for the  $^{241}\text{Am}$  alpha peak and electronic pulser respectively.
- The table entries noted " --- " were not fabricated as these a-Si/c-Si structures were not expected to form blocking contacts.
- The table entries noted "leaky" had reverse leakage currents greater than 10  $\mu\text{A}$  with 10 V reverse bias.

Table 3. Characterization of heterojunctions formed

Process	P-type, 1000 $\Omega\text{-cm}$	P-type, 5000 $\Omega\text{-cm}$	N-type, 5000 $\Omega\text{-cm}$
RF Argon	n <sup>+</sup>	n <sup>+</sup>	p
RF Argon + $\text{H}_2$	n	n <sup>+</sup>	p
PECVD-undoped	n	n <sup>+</sup>	n
PECVD-boron	---	---	p <sup>+</sup>
PECVD-phosphorus	n <sup>+</sup>	n <sup>+</sup>	---
LPCVD-undoped	n	n	n

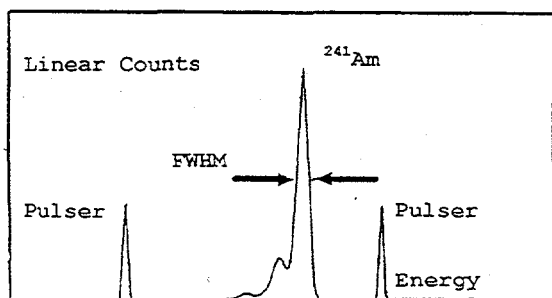


Figure 2. The  $^{241}\text{Am}$  alpha spectrum produced by a 5 mm diameter a-Si/c-Si heterojunction produced by RF sputtering in Argon. The contact metal is Al.

It is interesting to note the similarities in behavior of the a-Si/c-Si contacts on high resistivity silicon with a-Ge/c-Ge contacts on high purity germanium. Our previous investigation of sputtered a-Ge/c-Ge heterojunctions has shown that the a-Ge contacts functioned as blocking contacts under either polarity of applied bias. The sputtered a-Ge/c-Ge contacts however exhibited better blocking properties when used as n-type contacts than as p-type contacts [9]. Also, the

hydrogen concentration of the sputter gas used in the deposition process affected the electrical properties of the contacts. Higher hydrogen concentrations resulted in higher barrier heights for hole injection and lower barrier heights for electron injection, thus resulting in a more n-type behavior.

The a-Si/c-Si junctions also showed similar bipolar blocking properties, i.e., diode behavior was obtained both for n-type and p-type materials. And like germanium, the sputtered a-Si/c-Si contacts performed better as n-type than as p-type contacts, although the presence of hydrogen does not appear to influence junction properties as much as with germanium. However, the present device structure, with the a-Si as the blocking contact, does not allow the ready measurement of the barrier height as was done on germanium, where the a-Ge heterojunction acted as an ohmic contact. Therefore, no definite conclusion can be drawn at the present time regarding the effect of hydrogen and different deposition processes on the blocking properties of the contacts.

Comparison of the performance of the RF sputtered and the phosphorus-doped PECVD deposited contacts on the p-type substrates suggests that the a-Si film quality is not important to a-Si/c-Si heterojunction leakage currents. As noted earlier in the discussion on film conductivity, the RF sputtered films appear to have high defect densities, while the PECVD films appear to have lower defect densities. Yet, from the results in Table 2, the RF sputtered contact yielded slightly lower leakage currents than the PECVD grown films. But the results here may be misleading, as in both instances the a-Si films are also acting as passivating layers at the heterojunction edge, and the diode leakage currents are possibly dominated by this peripheral "surface" current arising partially from the conductivity of the a-Si films. We have further tests planned to explore the sources of the diode leakage current.

conductivity of the a-Si films. We have further tests planned to explore the sources of the diode leakage current.

The "undoped" films produced by PECVD and LPCVD did not, with the exception of the PECVD deposition on the 5000  $\Omega$ -cm sample, yield low leakage junctions. While both the boron-doped and phosphorus-doped PECVD films produced low leakage current diodes, we did not have the capability of producing similarly doped films with LPCVD. Therefore we cannot now make an assessment as to whether doped LPCVD films have application in detector fabrication.

A figure of merit against which to compare these a-Si/c-Si heterojunction leakage currents is the  $\ln A/1\text{cm}^2/100\ \mu\text{m}$  (reverse leakage current/device area/depletion depth) commonly quoted for oxide-passivated silicon planar technology devices[10]. For the a-Si/c-Si heterojunctions fabricated here, this figure of merit is  $\sim 0.5\text{-}2.0\ \mu\text{A}/1\text{cm}^2/100\ \mu\text{m}$ , comparable to values we have obtained with silicon surface barrier technology.

While our present heterojunction performance falls short of that attained by oxide-passivated devices, this heterojunction technology does open the possibility of fabricating novel Si detectors such as thick (>1 mm) segmented Si detectors and Si x-ray detectors. Thick Si detectors and Si x-ray detectors are normally fabricated via lithium-ion compensation, a process that is incompatible with high processing temperatures[11]. We have already successfully fabricated thick Si(Li) segmented and Si(Li) x-ray detectors with heterojunctions. In particular a "normal" Si(Li) x-ray detector with an entrance contact composed of aluminum and RF sputtered (Ar + 17.5% H<sub>2</sub>) a-Si had photopeak/background performance equivalent to that reported earlier on an "inverted" Si(Li) diode structure[12].

## VI. CONCLUSIONS

With these results we have shown that contacts can be formed by RF sputtering or PECVD. In particular:

- Both "undoped" RF sputtered films and phosphorous-doped PECVD films form blocking contacts on p-type silicon that have low leakage currents and low noise.
- Only boron-doped PECVD films form blocking contacts on n-type silicon that also have low leakage currents and low noise.
- Both RF sputtered films and PECVD deposited films also act as passivating layers. The leakage currents on the test structures have been stable with time, and the behavior of these devices has been similar to the surface barrier detectors now commonly used.

## VII. ACKNOWLEDGMENTS

We gratefully acknowledge the assistance of Amy Barnes and Julie Lee with the measurements reported.

Funding for this work was provided by DOE STTR Grant No. 02066-95-I.

## VIII. REFERENCES

1. H. Matsuura, "Hydrogenated Amorphous-Silicon/Crystalline-Silicon Heterojunctions: Properties and Applications," *IEEE Trans. E.D.*, vol. 36, no. 12, p.2908, 1989.
2. P.N. Luke, C.S. Rossington, and M.F. Wesela, "Low Energy X-ray Response of Ge Detectors with Amorphous Ge Entrance Contacts," *IEEE Trans. Nucl. Sc.*, vol.41, no.4, p.1074, 1994.
3. H. Matsuura, T. Okuno, H. Okushi and K. Tanaka, "Electrical Properties of N-Amorphous/P-Crystalline Silicon Heterojunctions," *J.Appl.Phys.*,55(4), p.1012, 1984.
4. W.S. Hong, J.S. Drewery, T. Jing, H. Lee, S.N. Kaplan, A. Miresghhi and V. Perez-Mendez, "Thick ( $\sim 50\mu\text{m}$ ) amorphous silicon p-i-n diodes for direct detection of minimum ionizing particles," *Nucl. Inst. and Meth.*, A365, p.239, 1995.
5. M. Yabe and N. Sato, "Silicon Nuclear Radiation Detectors of a -Si:H/c-Si Heterojunction Structure with Sensitive Large Area or Array Area," *Sensors and Actuators*, A21-A23, p.487, 1990.
6. Y. Chiba, I. Endo, M. Kubola, T. Ohsugi, S. Okada, S. Asai, Y. Kitano, T. Ohta, K. Seki, T. Yokoyama, M. Yabe and F. Takasaki, "A position-sensitive radiation detector using a heterojunction of amorphous and crystalline silicon," *Nucl. Inst. and Meth.*, A299, p.152, 1990.
7. IEEE Nuclear Science Standards Collection, IEEE, New York, N.Y., 1991.
8. W. Paul, A.J. Lewis, G.A.N. Connell and T.D. Moustakas, "Doping, Schottky Barrier and p-n Junction Formation in Amorphous Germanium and Silicon by RF Sputtering," *Solid State Comm.*, vol.20, p.969, 1976.
9. P.N. Luke, C.P. Cork, N.W. Madden, C.S. Rossington and M.F. Wesela, "Amorphous Ge Bipolar Contacts on Ge Detectors," *IEEE Trans. Nucl. Sc.*, vol. 39, no. 4, p.590, 1992.
10. S. Holland, "Fabrication of Detectors and Transistors on High Resistivity Silicon," *Nucl. Inst. and Meth.*, A275, p.537, 1989.
11. J.T. Walton, N. Derhacopian, Y.K. Wong and E.E. Haller, "Lithium Drifted Silicon Detector Fabrication on Gettered Floating Zone Silicon," *IEEE Trans. Nucl. Sc.*, Vol. 41, p.1031, 1994.
12. N.W. Madden, F.S. Goulding, J.M. Jaklevic, D.A Landis, and C.S. Rossington, "An Improved Operating Mode for a Si(Li) X-ray Spectrometer," *IEEE Trans. Nucl. Sc.*, vol. 37, No. 2, p.171, 1990.