

# SUMMARY OF LITHOLOGIC LOGGING OF NEW AND EXISTING BOREHOLES AT YUCCA MOUNTAIN, NEVADA, MARCH 1994 TO JUNE 1994

by Jeffrey K. Geslin and Thomas C. Moyer

---

U.S. GEOLOGICAL SURVEY

Open-File Report 94-451

Prepared in cooperation with the  
NEVADA OPERATIONS OFFICE,  
U.S. DEPARTMENT OF ENERGY under  
Interagency Agreement DE-AI08-92NV10874

## DISCLAIMER

This report was prepared as an account of work sponsored by an agency of the United States Government. Neither the United States Government nor any agency thereof, nor any of their employees, makes any warranty, express or implied, or assumes any legal liability or responsibility for the accuracy, completeness, or usefulness of any information, apparatus, product, or process disclosed, or represents that its use would not infringe privately owned rights. Reference herein to any specific commercial product, process, or service by trade name, trademark, manufacturer, or otherwise does not necessarily constitute or imply its endorsement, recommendation, or favoring by the United States Government or any agency thereof. The views and opinions of authors expressed herein do not necessarily state or reflect those of the United States Government or any agency thereof.

Denver, Colorado  
1995



DISTRIBUTION OF THIS DOCUMENT IS UNLIMITED

**MASTER**

**U.S. DEPARTMENT OF THE INTERIOR**

**BRUCE BABBITT, Secretary**

**U.S. GEOLOGICAL SURVEY**

**Gordon P. Eaton, Director**

The use of trade, product, industry, or firm names is for descriptive purposes only and does not imply endorsement by the U.S. Government.

---

For additional information write to:  
Chief, Earth Science Investigations  
Program  
Yucca Mountain Project Branch  
U.S. Geological Survey  
Box 25046, MS 421  
Denver Federal Center  
Denver, CO 80225

Copies of this report can be purchased from:  
U.S. Geological Survey  
Earth Science Information Center  
Open-File Reports Section  
Box 25286, MS 517  
Denver Federal Center  
Denver, CO 80225

## **DISCLAIMER**

**Portions of this document may be illegible in electronic image products. Images are produced from the best available original document.**

# CONTENTS

Abstract .....	1
Introduction .....	1
Study methods .....	1
Continuing logging .....	2
References .....	7
Appendix 1. Graphical lithologic logs for boreholes at Yucca Mountain, Nevada .....	10
Notes for graphical lithologic logs .....	10
UE-25 NRG #2C .....	10
UE-25 NRG #2D .....	10
USW NRG-77A .....	10
All graphical lithologic logs .....	10

## FIGURES

1. Borehole location map .....	3
--------------------------------	---

## TABLES

1. Location and information for boreholes logged at Yucca Mountain, March 1994 to June 1994 .....	2
2. Lithostratigraphic nomenclature of the Paintbrush Group at Yucca Mountain .....	4
3. Generalized lithostratigraphy of boreholes at Yucca Mountain, Nevada .....	5
4. Summary of depths to basal contacts for boreholes at Yucca Mountain, Nevada .....	6

## CONVERSION FACTORS AND VERTICAL DATUM

Multiply	By	To obtain
millimeter (mm)	0.03937	inch
centimeter (cm)	0.3937	inch
meter (m)	3.281	foot
kilometer (km)	0.6214	mile

**Sea level:** In this report "sea level" refers to the National Geodetic Vertical Datum of 1929 (NGVD of 1929)—a geodetic datum derived from a general adjustment of the first-order level nets of both the United States and Canada, formerly called Sea Level Datum of 1929.

# Summary of Lithologic Logging of New and Existing Boreholes at Yucca Mountain, Nevada, March 1994 to June 1994

By Jeffrey K. Geslin and Thomas C. Moyer

## Abstract

This report summarizes lithologic logging of core from boreholes at Yucca Mountain, Nevada, conducted from March 1994 to June 1994. Units encountered during logging include Quaternary-Tertiary alluvium and colluvium, Tertiary Rainier Mesa Tuff, all units in the Tertiary Paintbrush Group, and Tertiary Calico Hills Formation. Logging results are presented in a table of contact depths for core from unsaturated zone neutron (UZN) boreholes and graphic lithologic logs for core from north ramp geology (NRG) boreholes.

## INTRODUCTION

Yucca Mountain, Nevada, is being investigated as a potential site for a high-level radioactive waste repository. This report summarizes the lithologic logging of new and existing boreholes at Yucca Mountain that was done from March to June 1994, by the Yucca Mountain Project Branch of the U.S. Geological Survey (USGS). This logging was undertaken with the objective to determine the spatial distribution and characteristics of stratigraphic units within the Yucca Mountain site area. Stratigraphic data obtained from lithologic logging are used in a preliminary three-dimensional lithostratigraphic model of Yucca Mountain. These data also can be integrated into hydrologic studies at Yucca Mountain and applied to engineering and construction of the Exploratory Studies Facility.

Lithostratigraphic units identified during logging include Quaternary-Tertiary alluvium and colluvium, the Tertiary Rainier Mesa Tuff of the Timber Mountain Group, all units in the Tertiary Paintbrush Group, and the Tertiary Calico Hills Formation. Criteria used to identify contacts between these units, and between lithostratigraphic units within the Paintbrush Group, are discussed in Geslin and others (in press). Stratigraphic nomenclature and lithologic descriptions of stratigraphic units in the Tiva Canyon, Yucca Mountain, Pah Canyon, and Topopah Spring Tuffs of the Paintbrush Group are from Sawyer and others (in

press) and also are summarized in Buesch and others (USGS, written commun., 1994).

The boreholes logged from March to June 1994 are listed, with their location and elevation, in table 1. Table 1 also lists the Data Tracking Number (DTN) for stratigraphic data from each borehole that have been released to the Yucca Mountain Project, submitted to the USGS Local Records Center in Denver, Colorado, and stored in the Yucca Mountain Project Central Records Facility in Las Vegas, Nevada. The locations of these boreholes are shown in figure 1. Cores from boreholes logged during this study are stored at the Yucca Mountain Project Sample Management Facility at the Nevada Test Site.

## STUDY METHODS

Lithostratigraphic units identified in core follow the stratigraphic hierarchy and nomenclature for the Paintbrush Group defined in Sawyer and others (in press) and followed by Buesch and others (USGS written commun., 1994) (table 2). The criteria used to identify contacts between stratigraphic units are described in Geslin and others (in press). Lithologic logging includes either identification of the depths of stratigraphic contacts (herein referred to as type 1 logging) or identification of the depths of contacts and detailed unit descriptions (herein referred to as type 2 logging). The lithostratigraphic units encountered during type 1 and type 2 logging of core from boreholes are summarized in table 3. The results of type 1 logging are reported as tables of contact depths (summarized in table 4), whereas the results of type 2 logging are reported in graphical form (appendix 1).

Type 1 logs were completed for core recovered from unsaturated zone neutron (UZN series) boreholes (table 4). Core recovered from UZN-series boreholes is stored in lexan tubing that limits viewing of the core and modifies colors by retaining moisture. Contacts that are difficult to identify through lexan or that were removed by sampling were confirmed or constrained by examination of processed samples at the Hydrologic Research Facility or by viewing videotapes of core photographed prior to sample removal.

**Table 1.** Location and information for boreholes logged at Yucca Mountain, March 1994 to June 1994

[Northing, easting, and elevation data are from EG&G and were provided as information to the Yucca Mountain Project. Northing and easting are based on the Nevada State Coordinate System. Locations and elevations are in feet.]

Borehole number	Northing	Easting	Elevation	Data tracking number
<b>Identification of lithologic contacts (type 1 logging)</b>				
USW UZ-N11	780,573.93	559,020.93	5,224.0	GS940308314211.010
USW UZ-N15	778,090.54	559,551.76	5,109.4	GS940308314211.019
USW UZ-N16	778,150.80	559,625.98	5,116.6	GS940308314211.019
USW UZ-N17	778,224.12	559,995.10	5,127.9	GS940308314211.019
USW UZ-N36	773,899.50	563,582.66	4,642.0	GS940308314211.018
USW UZ-N38	767,466.37	563,343.41	4,148.9	GS940308314211.011
UE-25 UZN #63	768,836.54	566,169.39	3,944.1	GS940308314211.017
USW UZ-N64	765,728.46	559,435.76	4,790.9	GS940308314211.016
<b>Detailed lithologic logging (type 2 logging)</b>				
UE-25 NRG #2C	765,771.68	569,189.76	3,801.2	GS940308314211.012
UE-25 NRG #2D	765,825.10	569,132.29	3,792.1	GS940308314211.013
USW NRG-7A	768,879.96	562,984.13	4,207.0	GS940408314211.020

Type 2 lithologic logs (appendix 1) were created for core recovered from north ramp geology (NRG) boreholes. These logs use the criteria of Buesch and others (USGS, written commun., 1994) to identify the welding and crystallization zones in each unit. Accompanying lithologic unit descriptions include the phenocryst content and assemblage; lithophysae content and size; pumice content, size, and composition; lithic clast content, size, and composition; and matrix color and content. The percentage of phenocrysts, lithic clasts, pumice clasts and lithophysae are visually estimated using charts included in the Munsell Soil Color Charts (Kollmorgen Instruments Corp., 1992). Phenocryst, pumice, and lithic clast types are identified with the aid of a hand lens. Phenocryst, pumice, and lithic clast types are identified with the aid of a hand lens or binocular microscope. The maximum and minimum dimensions of pumice, lithic clast, and lithophysae (void) sizes are measured along two perpendicular axes and recorded as either typical or maximum sizes observed. Pumice, lithic clast, and matrix colors are determined on dry core using Munsell Color Charts

(Geological Society of America, 1991; Kollmorgen Instruments Corp., 1992). Other features of the core, including fracture geometry and morphology, fracture mineralization, and development and orientation of foliation (dip angle measured from horizontal), also are recorded and included in unit descriptions.

## CONTINUING LOGGING

Continued logging in 1994 and 1995 will produce a table of contact depths for boreholes NRG #5A, SD-9, SD-10, SD-12, UZ-7A, SRG-1, SRG-2, SRG-3, and SRG-4 (depending on drilling progress) that will be submitted to the USGS Yucca Mountain Project Branch Local Records Center upon completion of drilling and following internal review. Graphical lithologic logs that summarize detailed logging will be prepared for UZ-14, SD-9, SD-12, and UZ-7A (depending on drilling progress). These data will be integrated into the preliminary three-dimensional lithostratigraphic model of Yucca Mountain.

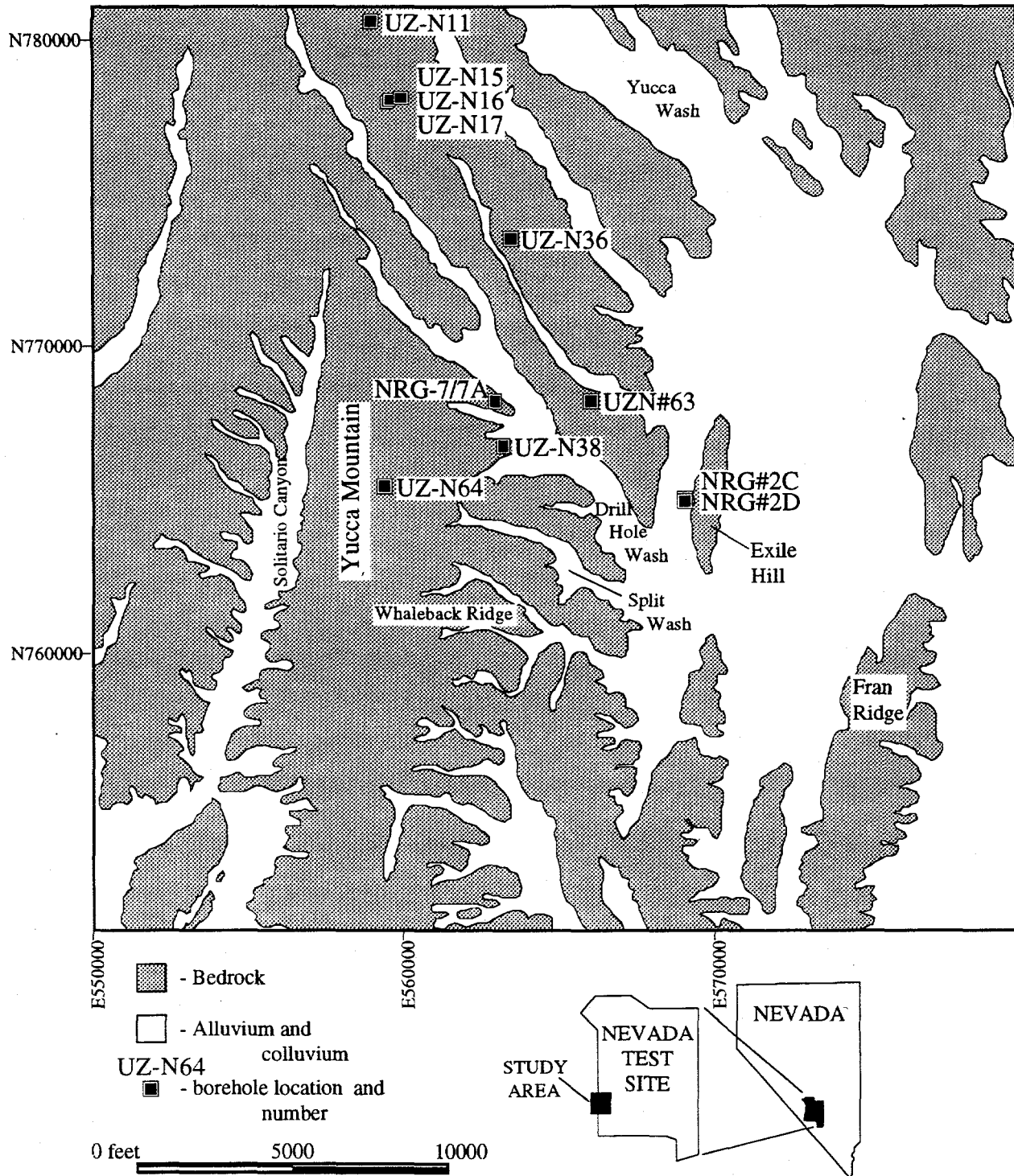


Figure 1. Borehole location map (modified from Nelson and others, 1991).

**Table 2.** Lithostratigraphic nomenclature of the Paintbrush Group at Yucca Mountain (from Sawyer and others, in press; Buesch and others, USGS, written commun., 1994)

---

<b>Tuff unit "x" (Tpki)</b>	
<b>Pre-Tuff unit "x" bedded tuff (Tpbt5)</b>	
<b>Tiva Canyon Tuff (Tpc)</b>	<b>Topopah Spring Tuff (Tpt)</b>
crystal-rich member (Tpcr) (quartz latite)	crystal-rich member (Tptr) (quartz latite)
vitric zone (rv)	vitric zone (rv)
non- to partially welded subzone (rv3)	non- to partially welded subzone (rv3)
moderately welded subzone (rv2)	moderately welded subzone (rv2)
vitrophyre subzone (rv1)	vitrophyre subzone (rv1)
nonlithophysal zone (rn)	nonlithophysal zone (rn)
subvitrophyre transition subzone (rn4)	crystal transition subzone (rn1)
pumice-poor subzone (rn3)	lithophysal zone (rl)
mixed pumice subzone (rn2)	crystal transition subzone (rl1)
crystal transition subzone (rn1)	crystal-poor member (Tptp) (high-silica rhyolite)
lithophysal zone (rl)	
crystal transition subzone (rl1)	upper lithophysal zone (pul)
crystal-poor member (Tpcp) (high-silica rhyolite)	cavernous lithophysae subzone (pul2)
upper lithophysal zone (pul)	small lithophysae subzone (pul1)
spherulite-rich subzone (pul1)	middle nonlithophysal zone (pmn)
middle nonlithophysal zone (pmn)	upper subzone (pmn3)
upper subzone (pmn3)	lithophysae-bearing subzone (pmn2)
lithophysae-bearing subzone (pmn2)	lower subzone (pmn1)
lower subzone (pmn1)	lower lithophysal zone (pll)
lower lithophysal zone (pll)	lower nonlithophysal zone (pln)
lower nonlithophysal zone (pln)	vitric zone (pv)
hackly subzone (plnh)	vitrophyre subzone (pv3)
columnar subzone (plnc)	moderately welded subzone (pv2)
spherulitic pumice interval (plnc3)	non- to partially welded subzone (pv1)
argillic pumice interval (plnc2)	
vitric pumice interval (plnc1)	<b>Pre-Topopah Spring Tuff bedded tuff (Tpbt1)</b>
vitric zone (pv)	
vitrophyre subzone (pv3)	
moderately welded subzone (pv2)	
non- to partially welded subzone (pv1)	
<b>Pre Tiva Canyon Tuff bedded tuff (Tpbt4)</b>	
<b>Yucca Mountain Tuff (Tpy)</b>	
<b>Pre-Yucca Mountain Tuff bedded tuff (Tpbt3)</b>	
<b>Pah Canyon Tuff (Tpp)</b>	
<b>Pre-Pah Canyon Tuff bedded tuff (Tpbt2)</b>	

---

Table 3. Generalized lithostratigraphy of boreholes at Yucca Mountain, Nevada

	Borehole number										NRG -777A	
	UZ-N 11	UZ-N 15	UZ-N 16	UZ-N 17	UZ-N 36	UZ-N 38	UZ-N #63	UZ-N 64	NRG #2C	NRG #2D		
Rainier Mesa Tuff (Tmr)												
Pre-Rainier Mesa Tuff bedded tuff (Tmbt1)												
Tuff unit "x" (Tpki)												
Pre-Tuff unit "x" bedded tuff (Tpbt5)												
Tiva Canyon Tuff (Tpc)												
crystal-rich member (Tpcr)												
vitric zone (rv)												
nonlithophysal zone (rn)												
lithophysal zone (rl)												
crystal-poor member (Tpcp)												
upper lithophysal zone (pul)												
middle nonlithophysal zone (pmn)												
lower lithophysal zone (pll)												
lower nonlithophysal zone (pln)												
hackly subzone (plnh)												
columnar subzone (plnc)												
vitric zone (pv)												
Pre-Tiva Canyon Tuff bedded tuff (Tpbt4)												
Yucca Mountain Tuff (Tpy)												
Pre-Yucca Mountain Tuff bedded tuff (Tpbt3)												
Pah Canyon Tuff (Tpp)												
Pre-Pah Canyon Tuff bedded tuff (Tpbt2)												
Topopah Spring Tuff (Tpt)												
crystal-rich member (Tptr)												
vitric zone (rv)												
nonlithophysal zone (rn)												
lithophysal zone (rl)												
crystal-poor member (Tptp)												
upper lithophysal zone (pul)												
middle nonlithophysal zone (pmn)												
lower lithophysal zone (pll)												
lower nonlithophysal zone (pln)												
vitric zone (pv)												
Pre-Topopah Spring Tuff bedded tuff (Tpbt1)												
Calico Hills Formation (Tac)												

Table 4. Summary of depths to basal contacts for boreholes at Yucca Mountain, Nevada

UNIT* no core	USW UZ-N11	USW UZ-N15	USW UZ-N16	USW UZ-N17	USW UZ-N36	USW UZ-N38	UE-25 UZN #63	USW UZ-N64
Alluvium/colluvium (Q <sub>fac</sub> )	1.7	2.3	4.2	2.5	0.9	17.9	4.4	1.8
Tiva Canyon Tuff (T <sub>pc</sub> )							8.6†	
crystal-rich member (T <sub>pct</sub> )								
nonlithophysal zone (m)								
subvolcanic transition subzone (m4)		16.2†		19.3†	16.1†			
pumice-poor subzone (m3)		57.6	36.5†		47.5			
mixed pumice subzone (m2)								39.8†
crystal transition subzone (m1)								
crystal-poor member (T <sub>pcp</sub> )								
lower nonlithophysal zone (pln)								
hackly subzone (plnh)						27.3†	25.0††	
columnar subzone (plnc)						49.1	44.3	
spherulitic pumice interval (c3)						80.9		
argillic pumice interval (c2)	25.2†							
vitric zone (pv)								
moderately welded subzone (pv2)	29.7							
non- to partially welded subzone (pv1)	46.4							
Bedded tuff (T <sub>bt4</sub> )	60.6							
Yucca Mountain Tuff (T <sub>py</sub> )								
Total depth	84.4	59.9	60.0	59.9	59.8	89.4	60.0	60.0

\* Stratigraphic subdivisions follow the nomenclature defined by Buesch and others (USGS, written commun., 1994). All measurements are in feet.

† The first unit encountered in the borehole.

†† The contact between the hackly and columnar subzones of the crystal-poor lower nonlithophysal zone is gradational from 25.0 to 37.3 feet. This unit is overlain by alluvium or colluvium.

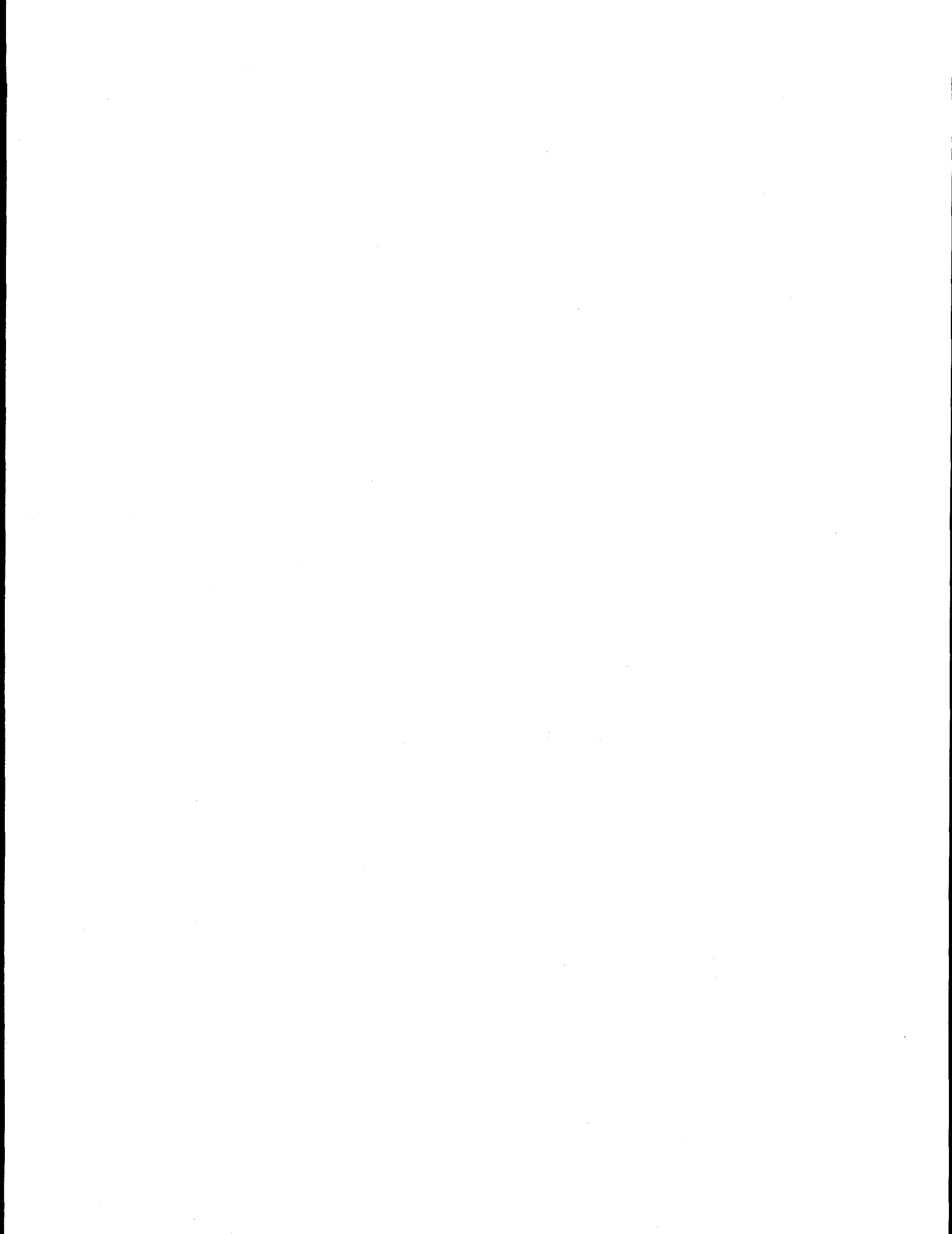
## REFERENCES

- Geological Society of America, 1991, Rock-color chart: Boulder, Colo., Geologic Society of America. (MOL.19940810.0002)
- Geslin, J.K., Moyer, T.C., and Buesch, D.C., 1994, Summary of lithologic logging of new and existing boreholes at Yucca Mountain, Nevada, August 1993 to February 1994: U.S. Geological Survey Open-File Report 94-342, in press. (MOL.19940810.0011)
- Kollmorgen Instruments Corporation, 1992, Munsell soil color charts: New York, Kollmorgen Instruments Corporation. (MOL.19940810.0003)
- Nelson, P.H., Muller, D.C., Schimschal, Ulrich, and Kibler, J.E., 1991, Geophysical logs and core measure-

ments from forty boreholes at Yucca Mountain, Nevada: U.S. Geological Survey, Geophysical Investigations Map GP-1001, 64 p. (NNA.920211.0022)

Sawyer, D.A., Fleck, R.J., Lanphere, M.A., Warren, R.G., Broxton, D.E., and Hudson, M.R., Episodic caldera volcanism in the Miocene southwestern Nevada volcanic field—Revised stratigraphic framework,  $^{40}\text{Ar}/^{39}\text{Ar}$  geochronology, and implications for magmatism and extension: Geological Society of America Bulletin, in press. (MOL.19940725.0004)

**NOTE:** Parenthesized numbers following each cited reference are for U.S. Department of Energy OCRWM Records Management purposes only and should not be used when ordering the publication.



---

---

# APPENDIX

---

---

## APPENDIX 1. GRAPHICAL LITHOLOGIC LOGS FOR BOREHOLES AT YUCCA MOUNTAIN, NEVADA

### Notes for Graphical Lithologic Logs

#### UE-25 NRG #2C

Core was recovered from the borehole with a hollow-stem auger, and includes nonlithified pyroclastic-flow and fall deposits of the Rainier Mesa Tuff (Timber Mountain Group), nonlithified bedded tuffs that underlie Rainier Mesa Tuff, and lithified tuff unit "x" (Paintbrush Group).

#### UE-25 NRG #2D

Core that was recovered from the borehole with a hollow-stem auger includes nonlithified pyroclastic-flow and fall deposits of the Rainier Mesa Tuff (Timber Mountain Group), nonlithified bedded tuffs that underlie Rainier Mesa Tuff, and lithified tuff unit "x" (Paintbrush Group).

#### USW NRG-77A

NRG-7 is a vertical hole located at approximately 768,846.20 N; 563,004.90 E that was drilled from the surface to 17.0 ft and then abandoned. NRG-7A is an adjacent vertical hole located at approximately 768,879.96 N; 562,984.13 E that was cored from 17.0 to 1513.4 ft (total depth). Samples were collected from NRG-7, however, it is not known if these samples represent colluvium or bedrock. Therefore, surface to 17 ft depth was not included in this log. Lithostratigraphic units in the core include the lower zones of the Tiva Canyon Tuff, Yucca Mountain Tuff, Pah Canyon Tuff, Topopah Spring Tuff, interbedded

nonwelded tuffs of the Paintbrush Group, and the upper part of the Calico Hills Formation.

(V)—Contacts depths designated with this symbol were identified using videotape of the core prior to sample removal.

\*—The top of the Topopah Spring Tuff is typically marked by a 2-cm-thick lithic-rich fallout deposit. This deposit apparently is represented by an unrecovered interval at approximately 280 ft. This depth is estimated from stratigraphic relationships in adjacent NRG boreholes.

### All Graphical Lithologic Logs

#### Welding Definitions

Nonwelded = nondeformed pumice, no to slight sintering of matrix.

Partially welded = nondeformed pumice, sintered/incipiently welded matrix (some macroscopic porosity).

Moderately welded = partial deformation of pumice (some macroscopic porosity), densely welded matrix (no porosity).

Densely welded = collapsed pumice (no macroscopic porosity), densely welded matrix.

#### Mineral Notation

qtz = quartz

san = sanidine

plag = plagioclase

feld = sanidine and plagioclase, undifferentiated

hbld = hornblende

cpx = clinopyroxene

bio = biotite

(oxy)bio = partially oxidized biotite

oxybio = completely oxidized biotite

**Zones of welding (W)**

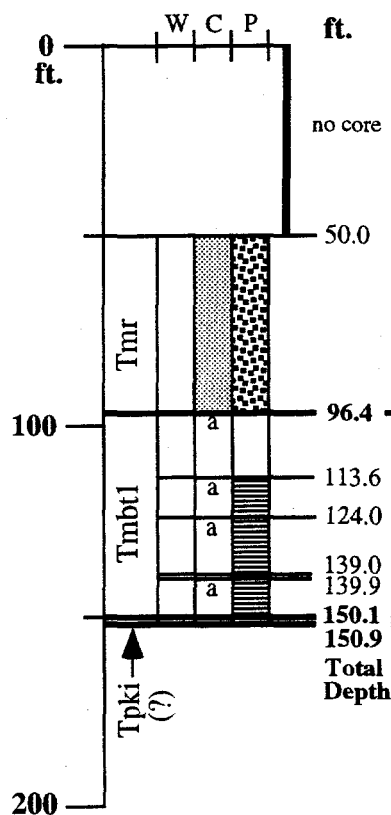
- Moderately to Densely (o-lithophysae)
- Partially to Moderately
- Non- to Partially
- Nonwelded

**Zones of crystallization (C)**

- Devitrified / Devit. + vapor-phase mins.
- Vitric / Vitric + vapor-phase mins.
- Altered (a) / to clay (c) / to zeolite (z)

**Phenocryst content (P)**

- greater than 10 percent
- 5 - 10 percent
- less than 5 percent



**Rainier Mesa Tuff (Tmr) -**

*Nonlithified pyroclastic-flow deposit: 50.0-96.4 ft*

Matrix, which changes downward from pale yellowish brown to pinkish white, contains distinctive colorless, bubble-wall glass shards. Pumice clasts (10-15 percent) are vitric, colorless, light gray, light brown, or brownish orange. Crystals (10-15 percent) include qtz, plag, san, and bio. Deposit may be lithified above 51.5 ft.

**Bedded Tuff (Tmbt1) -**

*96.4-113.6 ft: Nonlithified fallout tephra.* White, vitric pumice lapilli and volcanic lithic clasts. Moderately sorted. Lithic content is 10-20 percent above 108.5 ft, but less than 2 percent below 108.5 ft. Pumice clasts are typically less than 3 mm diameter. Grades upward into a light brown paleosol (96.4-100.8 ft). *113.6-124.0 ft: Nonlithified pumice-rich fallout.* Moderately well sorted, normally graded. Pumice grades upward from less than 5 mm to less than 3 mm diameter. Contains grayish yellow-green lithic clasts. Crystals of feld, qtz, bio. Light brown paleosol from 113.6-118.8 ft. *124.0-139.9 ft: Nonlithified pyroclastic-flow (?) deposit.* Light brown with glass shards and white pumice less than 5 mm. Crystals of feld, qtz, bio. Pumice fallout from 139.0 to 139.9 ft. *139.9-150.1 ft: Nonlithified pyroclastic-flow (?) deposit.* Medium brown with glass shards and 10-20 percent white pumice, most less than 5 mm. Crystals of feld, qtz, bio. Poorly consolidated.

**Tuff Unit "x" (Tpki) (?) -**

*Lithified pyroclastic-flow deposit: 150.1 ft-Total Depth*

Pumice clasts (10-15 percent), white to pale yellowish or greenish (zeolitized?), in a brownish gray altered matrix. Volcanic lithic clasts (5-7 percent) are dark gray, dark reddish gray, or medium light gray.

**Zones of welding (W)**

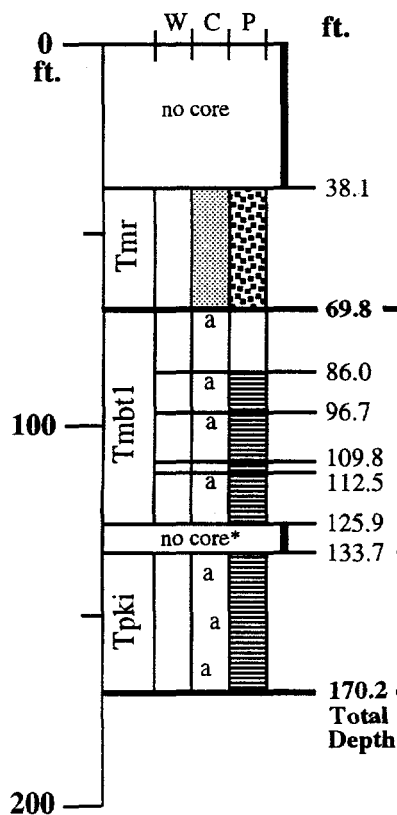
- Moderately to Densely (o-lithophysae)
- Partially to Moderately
- Non- to Partially
- Nonwelded

**Zones of crystallization (C)**

- Devitrified / Devit. + vapor-phase mins.
- Vitric / Vitric + vapor-phase mins.
- Altered (a) / to clay (c) / to zeolite (z)

**Phenocryst content (P)**

- greater than 10 percent
- 5 - 10 percent
- less than 5 percent



**Rainier Mesa Tuff (Tmr) -**

*Nonlithified pyroclastic-flow deposit: 38.1-69.8 ft*

Matrix, which changes downward from pale yellowish brown to pinkish white, contains distinctive colorless, bubble-wall glass shards. Pumice clasts (10-20 percent) are vitric, colorless, white, light brown, or brownish orange. Crystals (10-15 percent) include qtz, plag, san, and bio.

**Bedded Tuff (Tmbt1) -**

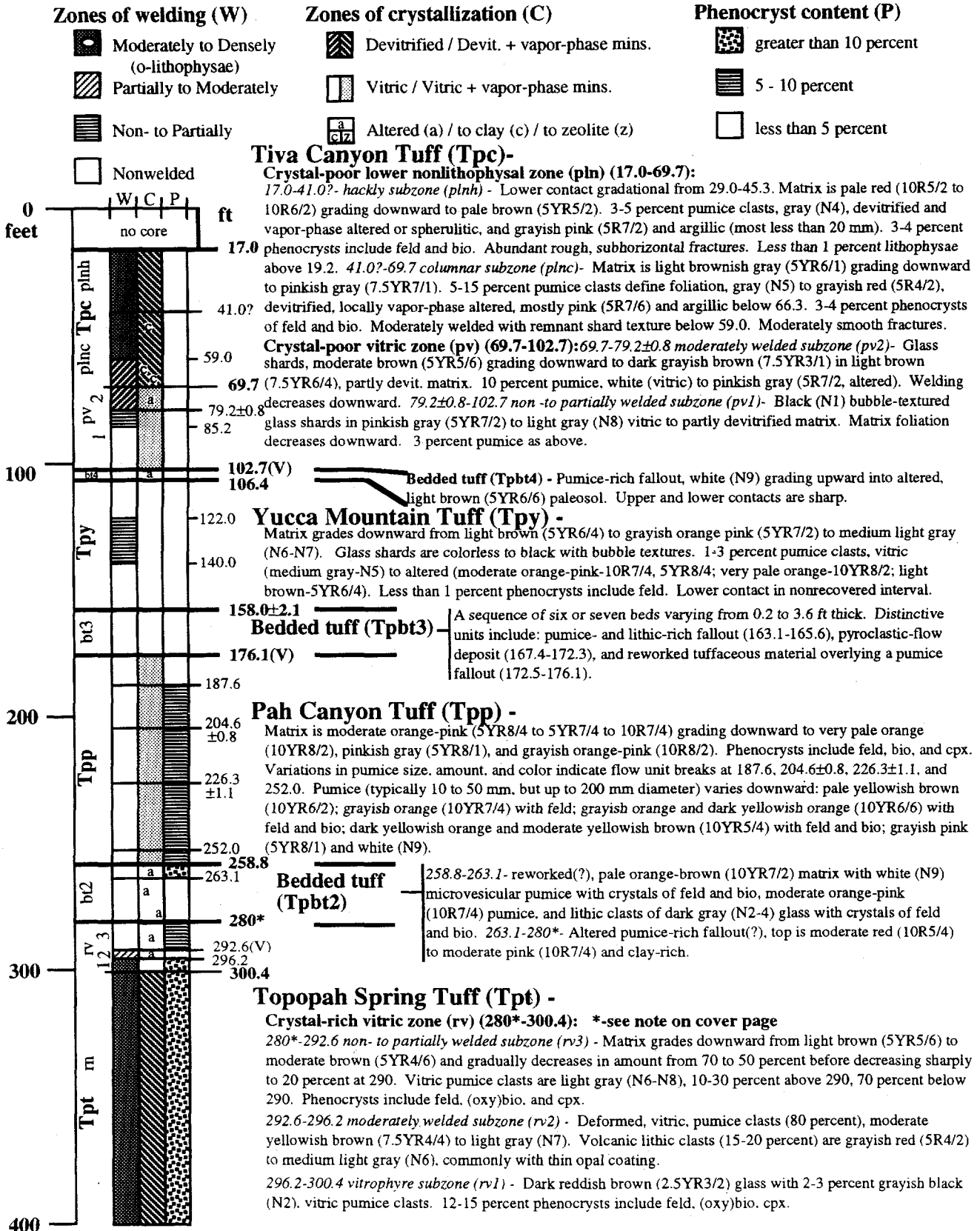
*69.8-86.0 ft: Nonlithified fallout tephra.* White, vitric pumice lapilli and volcanic lithic clasts. Moderately sorted, lithic content increases from about 5 percent to about 20 percent upward, pumice clasts are typically less than 3 mm diameter. Grades upward into a light brown paleosol (69.8-74.0 ft). *86.0-96.7 ft: Nonlithified pumice-rich fallout.* Moderately well sorted, normally graded. Pumice grades upward from less than 5 mm to less than 3 mm diameter. Crystals of feld, qtz, bio. Light brown paleosol from 86.0-91.0 ft. *96.7-112.5 ft: Nonlithified pyroclastic-flow (?) deposit.* Light brown with glass shards and white pumice less than 5 mm. Crystals of feld, qtz, bio. Pumice-rich fallout from 109.8 to 112.5 ft. *112.5-125.9 ft: Nonlithified pyroclastic-flow (?) deposit.* Medium brown with glass shards and 10-20 percent white pumice, most less than 5 mm. Crystals of feld, qtz, bio. Poorly consolidated below 118.0 ft.

\* Core run marker notes lithified material at 127.4 ft.

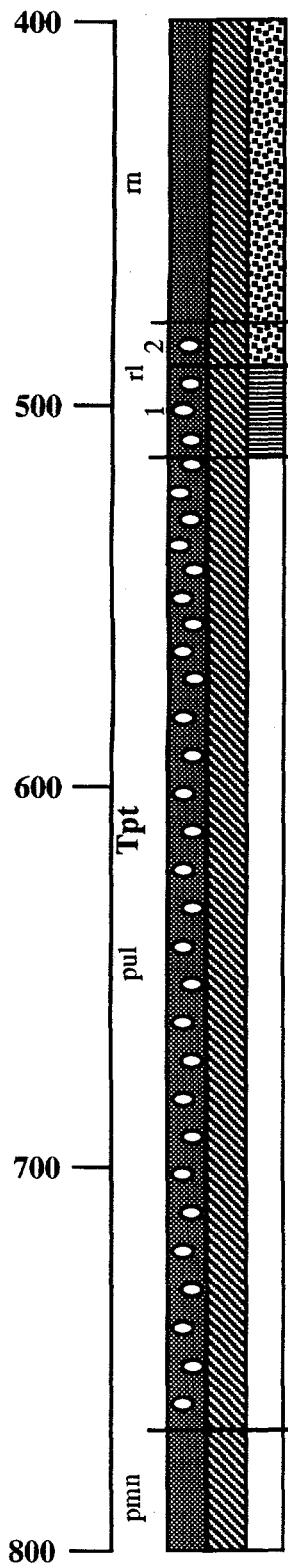
**Tuff Unit "x" (Tpki) -**

*Lithified pyroclastic-flow deposit: 133.7 ft-Total Depth*

Pumice clasts (10-15 percent), white to pale yellowish or greenish (zeolitized?), in a brownish gray altered matrix. Volcanic lithic clasts (5-7 percent) are dark gray, dark reddish gray, or medium light gray.



**Borehole :USW NRG-7/7A**



**Crystal-rich nonlithophysal zone (rn) (300.4-478.2):**

Vapor-phase altered pumice clasts (10-15 percent, locally 5-7 percent) are corroded, mostly less than 30 mm (up to 45 x greater than 80 mm) above about 380 and mostly greater than 30 mm (up to greater than 80 mm, width of the core) below. Pumice clasts grayish red (10R4/2), pale red (10R6/2), white (N9), and light gray to very light gray (N7 to N8). Phenocrysts include feld, oxybio, rare cpx, and rare hblld (?). Matrix grades downward from brownish gray and moderate brown (5YR4/1 and 5YR3/4) to pale red (10R6/2) to pale reddish brown and light brown (10R5/4 and 5YR5/4). Matrix contains white (N9) streaks of vapor-phase minerals. Degree of devitrification and vapor-phase mineralization increases downward, zone of intense vapor-phase mineralization at about 332-360.

**Crystal-rich lithophysal zone (rl) (478.2-518.4):**

**478.2-489.5 crystal-rich lithophysal subzone (rl2) -** Lithophysae (1-3 percent) up to 42 x 37 mm. Vapor-phase altered pumice clasts (about 10 percent) are corroded, most less than 40 mm (up to greater than 80 mm, width of the core), white to very light gray (N9 to N8) or rarely pale red (10R6/2). Phenocrysts (10 percent) include feld, oxy bio, and rare altered cpx. Matrix is light brown (5YR5/6) with white (N9) streaks of vapor-phase minerals.

**489.5-518.4 crystal transition subzone (rl1) -** Phenocrysts decrease downward from 10 percent to 2-3 percent, and include feld, oxybio, and rare altered cpx. Lithophysae (5 percent at top, 10-15 percent downward) are mostly less than 35 mm (up to 39 x 55 mm), and have very light gray (N8) rims. Pumice clasts (10 percent), most less than 40 mm (up to 24 x greater than 80 mm, width of core), are pale brown (5YR5/2) and white (N9). Matrix is grayish orange-pink (5YR7/2) to very light gray (N8).

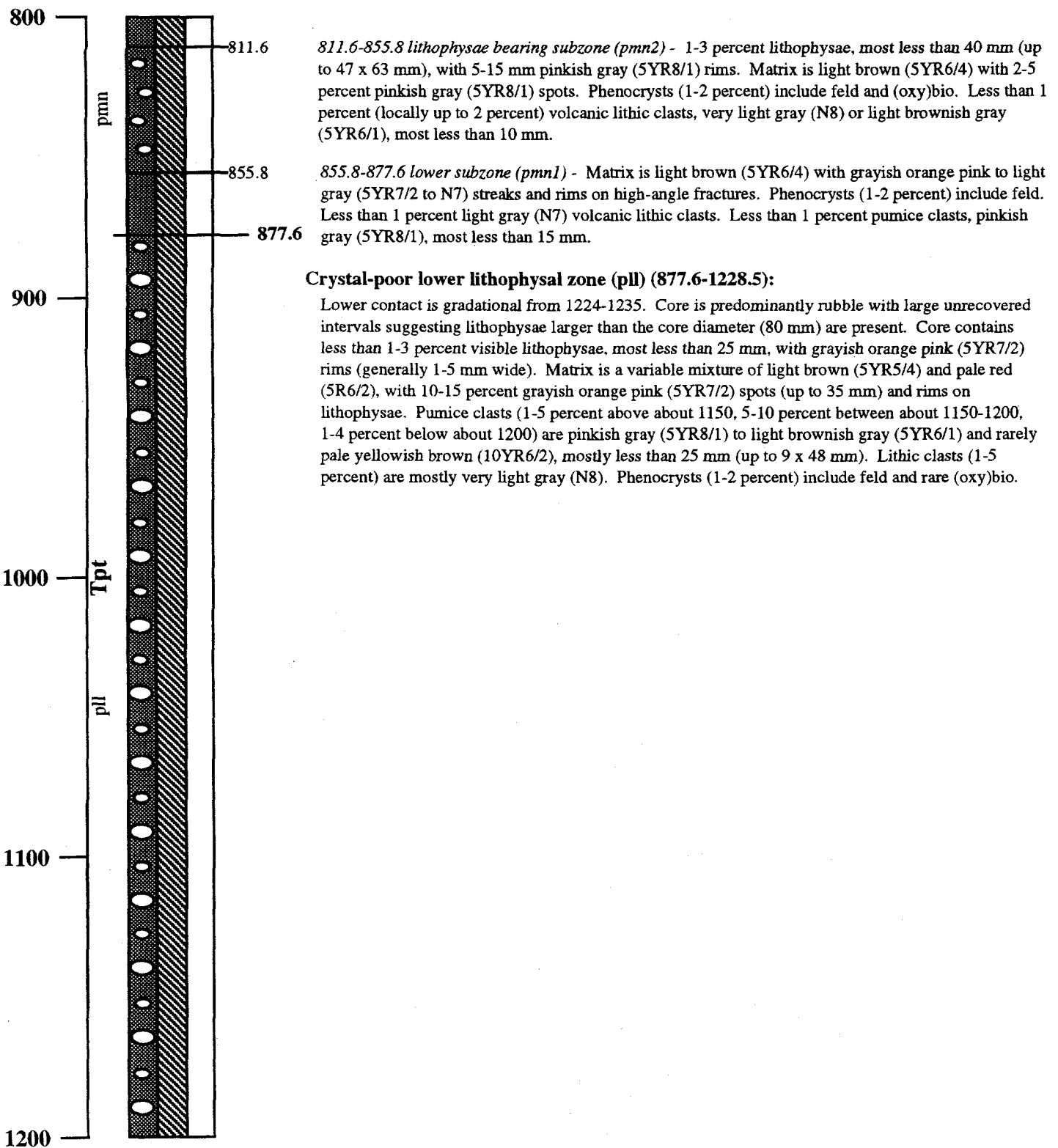
**Crystal-poor upper lithophysal zone (pul) (518.4-768.5):**

Lower contact gradational from 763-780. Lithophysae range from 2-3 percent to 15-25 percent, mostly greater than 10 percent above about 570. Lithophysae are mostly less than 40 mm (up to 60 mm) above about 570, mostly less than 25 mm (up to 50 mm) below, with pinkish gray (5YR8/1) rims. Up to 25 percent spots in matrix that are pinkish gray (5YR8/1). Pumice clasts (5-7 percent at top of unit) decrease downward, pumice textures absent below about 610. Pumice clasts are mostly less than 30 mm (up to greater than 80 mm, width of the core), pale brown (5YR5/2) to moderate brown (5YR4/4). Phenocrysts (2-3 percent) include feld and (oxy)bio. Matrix grades downward from grayish orange pink (5YR7/2) to pale red purple and moderate orange pink (5YR6/2 and 10YR7/4) to a variable mixture of red purple (5YR5/2) and pale red (10R6/3).

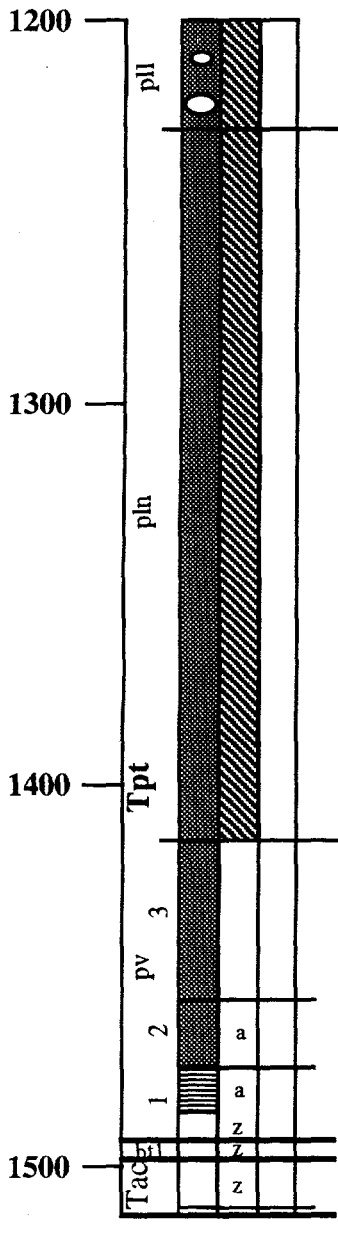
**Crystal-poor middle nonlithophysal zone (pmn) (768.5-877.6):**

**768.5-811.6 upper subzone (pmn3) -** Less than 1 percent lithophysae above 785. Matrix is light brown (5YR6/4) with 1-5 percent pinkish gray (5YR8/1) spots. Phenocrysts (1-2 percent) include feld and (oxy)bio. Lithic clasts (less than 1 percent) include very light gray to light brownish gray (N8 to 5YR6/1), most less than 10 mm.

**Borehole :USW NRG-7/7A**



**Borehole : USW NRG-7/7A**



**Crystal-poor lower nonlithophysal zone (pln) (1228.5-1414.8±1.6):**

Less than 1 percent lithophysae above about 1260, most less than 25 mm. Matrix in upper part of zone is pale brown (5YR5/4) with grayish orange pink (5YR7/2) vapor-phase streaks, grading downward (at about 1320) to a variable mixture of light brown (5YR6/4) and pale red (5R6/2), then grading downward (at about 1380) to a variable mixture of pale red (5R6/2), grayish orange (10YR7/4) and pale yellowish brown (10YR6/2). Pumice clasts comprise 5-7 percent above about 1270, 3-5 percent between about 1270-1340, and 7-10 percent below about 1340, most less than 25 mm (up to 45 x greater than 55 mm, width of core). Pumice clasts are devitrified, light brownish gray to medium light gray (5YR6/1 to N6) and light brown to pale brown (5YR6/4 to 5YR5/2) above 1398. Pumice clasts are vitric, dark gray (N3), devitrified, pale red (5R6/2), or argillic, reddish yellow (7.5YR7/8) below 1398, and below 1410 are vitric and dark gray (N3). Lithic clasts comprise 1-4 percent above 1300, 3-7 percent below 1300, locally as high as 10-15 percent. Lithic clasts are very light gray (N8) and pale red (5R6/2), some contain crystals of feld, most less than 10 mm above 1300 and most less than 20 mm below 1300 (up to 50 x 150 mm). Phenocrysts (1-2 percent) include feld and rare (oxy)bio.

**Crystal-poor vitric zone (pv) (1414.8±1.6-1493.6±0.9):**

*1414.8±1.6-1457.0 vitrophyre subzone (pv3)* - Grayish black (N2) glass with light brown (5YR5/4) spherulites. Lithic clasts (5-7 percent near top, 7-10 percent near base) are very light gray (N8) and grayish red (10R4/2), most less than 10 mm (up to 85 x greater than 55 mm, width of core). Phenocrysts (1-2 percent) include feld.

*1457.0-1474.6 moderately welded subzone (pv2)* - Matrix grades downward from a mixture of grayish black (N2) and reddish yellow (7.5YR7/6) to pinkish gray (7.5YR8/2) with grayish black (N2) glass shards. Pumice clasts (10-15 percent) are vitric and grayish black (N2) or grayish orange (7.5YR7/4), most less than 30 mm (up to 20 x 51 mm). Lithic clasts (5-7 percent) are very light gray (N8), grayish red (10R4/2), and grayish brown (5YR4/4), most less than 10 mm. Phenocrysts (1-2 percent) include feld.

*1474.6-1493.6±0.9 non- to partially welded subzone (pv1)* - Matrix is light brown (5YR6/4 to 5YR5/6) with grayish black (N2) glass shards at top to grayish yellow (5Y8/4) at base. Pumice clasts (10-20 percent) are altered and light gray (N7) at top and grayish orange pink (10R8/2) at base, most less than 15 mm (up to 46 x greater than 55 mm, width of core). Lithic clasts (5-7 percent at top, 10-15 percent at base) are grayish black (N2), light brownish gray (5YR6/2), and rarely moderate orange pink (10R7/4) and light brown (5YR5/6), most less than 15 mm (up to 48 x 50 mm). Phenocrysts (1-2 percent) include feld and rare qtz (?) and (oxy)bio.

*1493.0(V) - 1498.0(V) Bedded tuff (Tpbt)* - Fallout deposit. Pumice clasts (75-85 percent) are white (N9), pinkish gray (5YR8/1) and grayish yellow (5Y8/4), most less than 5 mm. Lithic clasts (15-25 percent) are dark gray (N3) and grayish red (10R3/2), most less than 3 mm. Phenocrysts (2-5 percent) include feld, qtz, (oxy)bio.

**Calico Hills Formation (Tac) -**

*1498.3±0.8-1511.6 pyroclastic flow deposit* - Matrix is grayish orange pink (5YR7/2 to 5YR8/3). Pumice clasts (15-20 percent) are grayish yellow to moderate yellow (5Y8/4 to 5Y7/6) or light gray (N7), most less than 15 mm (up to 7 x 27 mm). Lithic clasts (3-5 percent) are dark gray (N3 to N4) or dark reddish brown (10R3/4), most less than 5 mm. Phenocrysts (1-3 percent) include feld, qtz, and (oxy)bio.

*1511.6-1513.4(TD) fallout deposit* - Inversely graded. Pumice clasts (85-90 percent) are pinkish gray (5YR8/1) and grayish yellow to moderate yellow green (5Y8/4 to 5GY7/4), most less than 3 mm above 1512.3 and less than 1 mm below. Lithic clasts (7-10 percent) are dark reddish brown to grayish red (10R3/4 to 5R4/2), most less than 3 mm above 1512.3 and less than 1 mm below. Phenocrysts (1-3 percent) include feld, qtz, and (oxy)bio.