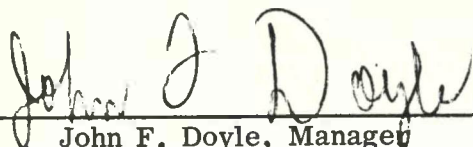


9 May 1973

**RADIOLOGICAL SURVEY OF THE AREA SURROUNDING
THE NINE MILE POINT NUCLEAR STATION
SCRIBA, NEW YORK
DATE OF SURVEY: 20 SEPTEMBER 1969**

Approved for Publication

MASTER

John F. Doyle, Manager
Aerial Surveillance Department



Clyde Jupiter, Manager
Radiation and Environmental Sciences Department

This Document is
UNCLASSIFIED



Classification Officer

NOTICE

This report was prepared as an account of work sponsored by the United States Government. Neither the United States nor the United States Atomic Energy Commission, nor any of their employees, nor any of their contractors, subcontractors, or their employees, makes any warranty, express or implied, or assumes any legal liability or responsibility for the accuracy, completeness or usefulness of any information, apparatus, product or process disclosed, or represents that its use would not infringe privately owned rights.

NOTICE

This report contains information of a preliminary nature and was prepared primarily for internal use at the originating installation. It is subject to revision or correction and therefore does not represent a final report. It is passed to the recipient in confidence and should not be abstracted or further disclosed without the approval of the originating installation or DTI Extension, Oak Ridge.

MASTER

DISTRIBUTION OF THIS DOCUMENT IS LIMITED
To AEC CONTRACTORS

Prepared for the U.S. Atomic Energy Commission Under Contract No. AT(29-1)-1183

DISTRIBUTION OF THIS DOCUMENT IS UNLIMITED

DISCLAIMER

This report was prepared as an account of work sponsored by an agency of the United States Government. Neither the United States Government nor any agency thereof, nor any of their employees, makes any warranty, express or implied, or assumes any legal liability or responsibility for the accuracy, completeness, or usefulness of any information, apparatus, product, or process disclosed, or represents that its use would not infringe privately owned rights. Reference herein to any specific commercial product, process, or service by trade name, trademark, manufacturer, or otherwise does not necessarily constitute or imply its endorsement, recommendation, or favoring by the United States Government or any agency thereof. The views and opinions of authors expressed herein do not necessarily state or reflect those of the United States Government or any agency thereof.

DISCLAIMER

Portions of this document may be illegible in electronic image products. Images are produced from the best available original document.

ABSTRACT

The Aerial Radiological Measuring System (ARMS) was used to survey the area surrounding the Nine Mile Point Nuclear Station during September 1969. The survey measured terrestrial background gamma radiation.

A high-sensitivity detection system collected gamma-ray spectral and gross-count data. The data were then computer processed into a map of a 600 square mile area showing isoexposure contours three feet above the ground. Exposure rates and isotopes identified are consistent with normal terrestrial background radiation.

ACKNOWLEDGMENTS

Special appreciation is given to L. J. Deal (Assistant Director, DOS/Health Protection, USAEC) and to Dr. Charles Pelletier (Chief, Environmental Inspection Branch, Regulatory Operations, USAEC) for their support and encouragement in this program.

CONTENTS

1.	INTRODUCTION.	1
1.1	Identification of Surveyed Plant and Area	1
1.2	ARMS Program	1
1.3	ARMS Equipment and Procedures	1
1.4	Reduction and Presentation of Data	4
2.	REACTOR AND SITE CHARACTERISTICS	5
2.1	Reactor Characteristics	5
2.2	Site Area Characteristics	6
3.	SURVEY PLAN	8
3.1	Specification of Flight Lines	8
3.2	Coordination with Local Authorities	8
4.	RADIOLOGICAL SURVEY	9
4.1	Survey Missions	9
4.2	Gross-Count Data.	9
4.3	Spectral Data.	9
5.	SUMMARY AND CONCLUSIONS	14

1. INTRODUCTION

1.1 Identification of Surveyed Plant and Area

The Aerial Radiological Measuring System (ARMS) (Ref. 1) operated by EG&G, Inc., Las Vegas, Nevada, for the U. S. Atomic Energy Commission was used to perform a gamma radiation survey of an extensive area surrounding the Nine Mile Point Nuclear Station during September 1969. The Nine Mile Point station, operated by the Niagara Mohawk Power Corp., is located near Scriba, New York. The size of the survey area was 600 square miles.

1.2 ARMS Program

The present survey was made as part of a continuing nationwide ARMS program started in 1958 to monitor radiation levels surrounding facilities producing or utilizing radioactive materials. This is the first such survey performed in the Nine Mile Point area.

The detection system on board the aircraft collects gamma-ray gross-count and spectral data on each flight line of the survey. The gamma radiation and aircraft position information are processed by a computer into an isoexposure contour map of the area surveyed.

1.3 ARMS Equipment and Procedures

The ARMS aircraft and its on-board radiation detection equipment were used in the survey. Since the ARMS equipment and procedures have been discussed in detail elsewhere (Ref. 1), they will only be described briefly here.

The ARMS surveys are flown in a Beechcraft Twin Bonanza at an altitude of 300 to 500 feet above terrain and a ground speed of about 140 knots (235 ft/sec). The ground position of the aircraft and its altitude above terrain are measured and recorded every other second by a radar navigation computer system. The position and altitude measurements are accurate to ± 350 ft and ± 5 ft, respectively.

A typical flight pattern consists of a series of parallel lines spaced one nautical mile (6080 feet) apart, covering all of the land area within a twelve and one-half nautical mile radius of the facility.

At an altitude of 300 feet the field of view of the detectors is approximately 1/4 mile wide for a mean gamma energy of naturally occurring isotopes.

The aerial radiation measurements are of two distinct types, made simultaneously: (1) gross gamma count (intensity) measurements and (2) gamma spectral measurements. The detector system consists of an array of fourteen 4 x 4 in. NaI (Tl) scintillation crystals, each coupled to its own photomultiplier assembly. The detector system output is directed both to the gross gamma count computing system and to the multichannel spectrum analyzer. The data collecting system is shown in Figure 1.

The gross gamma count system consists of an amplifier-discriminator-computer unit that counts and records the total number of gamma-rays of energy greater than 50 keV that are detected during a 1-second time interval. The gross gamma count rate (number of gamma-rays detected per second) is digitally recorded along with aircraft position and altitude every other second. Aircraft position data are supplied by a track navigational computer and doppler radar. Altitude above terrain is measured with a radar altimeter. As a backup and complement to the digital recording of the gross-count data, a record is made on a continuous strip chart of both gross gamma count rate and radar altitude as a function of distance. Typical gross-count rates for natural background are several thousand per second.

Whereas the gross gamma count data specify the intensity of radiation as a function of position, the gamma spectral data are useful in identifying particular radioactive isotopes. A pulse-height analyzer automatically sorts detected gamma-rays according to energy, thereby generating a number per unit-energy versus energy spectrum. Although gamma rays occur only at well known discrete energies characteristic of the emitting species, air scattering tends to smear the detected distribution. Nevertheless, the characteristic peaks that permit isotope identification are readily observable. In wide area surveys the typical acquisition time for a gamma-ray spectrum is several minutes; thus the spectrum represents the average radiological properties of a tract several miles in length. However, if an area of interest is indicated by an increase in the gross gamma count rate, spectral data acquisition times of only a few seconds are used to isolate the area spatially. If further investigation is warranted, a ground

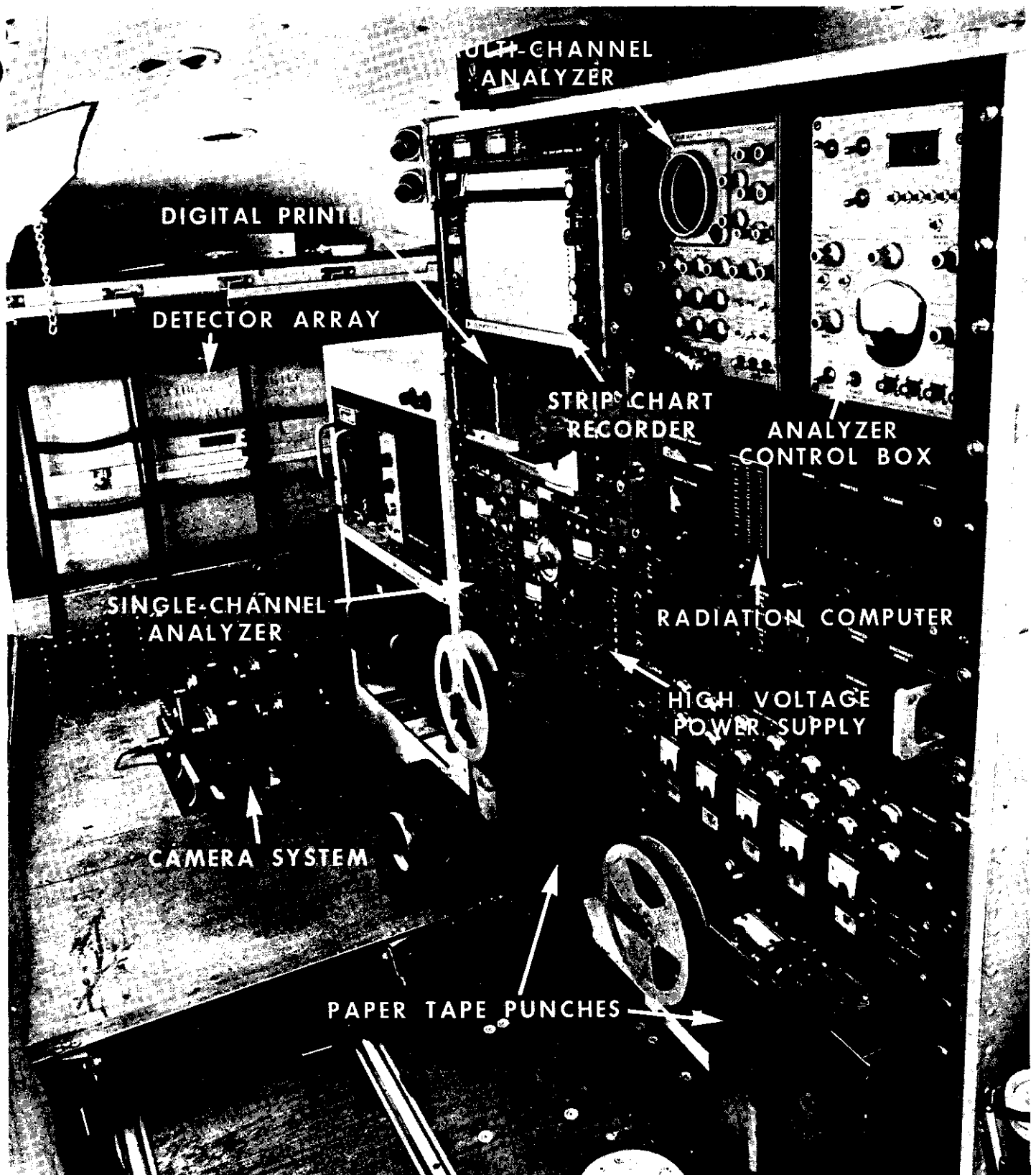


FIGURE 1. View of the interior of the Aerial Radiological Measuring System (ARMS) aircraft showing detector package and electronic data collection system.

mobile unit with equipment similar to that in the aircraft is available to provide greater spatial and energy resolution.

In addition to the equipment just described, the ARMS aircraft also carries an air sampling and analysis system for the measurement of airborne radioactivity.

1.4 Reduction and Presentation of Data

The raw data from the gross gamma count and the gamma spectral measurements are permanently recorded on paper tape, which is computer processed and analyzed to characterize the radiological properties of the area surveyed. Using an altitude-dependent conversion factor obtained from prior calibration measurements, the raw gross-count rate is converted to exposure rate ($\mu\text{R/hr}$) at three feet above ground.

The exposure rate conversion factor was obtained from repeated flights 200 to 1000 feet above terrain containing known distributions of natural isotopes. Such conversion factors have proved valid over distributed fission product fields, with a variation of less than 25%. In practice, variations of 2 $\mu\text{R/hr}$ or greater can be reliably observed in repeated flights over the same area.

2. REACTOR AND SITE CHARACTERISTICS

2.1 Reactor Characteristics

The Nine Mile Point Reactor is located in Oswego County, New York, five miles northeast of the town of Scriba.

The principal nuclear contractor is the General Electric Company. The facility is operated by the Niagara Mohawk Power Corp.

Table 1 gives the specifications of the reactor facility at the time of the survey.

TABLE 1. Reactor facility specifications.

Reactor Unit	Reactor Type	Start-Up Date	Power Levels (Megawatts)		Status
			Electrical	Thermal	
1	Boiling water	1969	625	1,850	Initial start-up phase

2.2 Site Area Characteristics

The shore of Lake Ontario forms the northwest boundary of the survey area. The terrain is mainly rolling hills covered by a mixture of forest, brushwoods, and orchards. Numerous small lakes and marshes occur throughout the area.

Table 2 lists the towns in the survey area with significant populations, by distance and direction from the reactor site.

TABLE 2. Principal population centers within the Nine Mile Point area.

Town	Direction from Power Station	Population *		
		Distance from Station (Miles)		
		0 - 5	5 - 10	10 - 15
Fernwood	E			3,659
Fulton	S			14,003
Lakeview	W	5,471		
Mexico	ESE		1,555	
Oswego	WSW		23,844	
Parish	SE			634
Pulaski	ENE			2,480
Totals		5,471	25,399	20,776
Grand Total				51,646

* 1970 census figures (Ref. 2).

3. SURVEY PLAN

3.1 Specification of Flight Lines

The flight pattern for the Nine Mile Point survey consisted of 25 flight lines 6 to 25 nautical miles long and spaced one nautical mile apart. The lines were oriented in a north-south direction and terminated on the shore of Lake Ontario. Radiation data together with aircraft position and meteorological information were collected along each flight line. The area covered by the survey was about 450 square nautical miles, or 600 square statute miles.

3.2 Coordination with Local Authorities

ARMS survey missions are conducted under special waiver from the Federal Aviation Administration. The survey plan was discussed with the appropriate General Aviation District Office, and public announcements were published in the local newspapers prior to the survey operation in accordance with the FAA waiver for low-level flights.

The base of operations for the survey mission was Springfield, Massachusetts.

4. RADIOLOGICAL SURVEY

4.1 Survey Missions

The aerial survey of the Nine Mile Point area was conducted on 20 September 1969. This survey required a total flying time of 5.7 hours.

Gamma gross-count and spectral data were simultaneously collected at an altitude of 300 feet. One or two spectra were accumulated along each flight line, depending on line length. The collection time for most of the spectra was about four minutes; during this time the aircraft traveled approximately 12 miles.

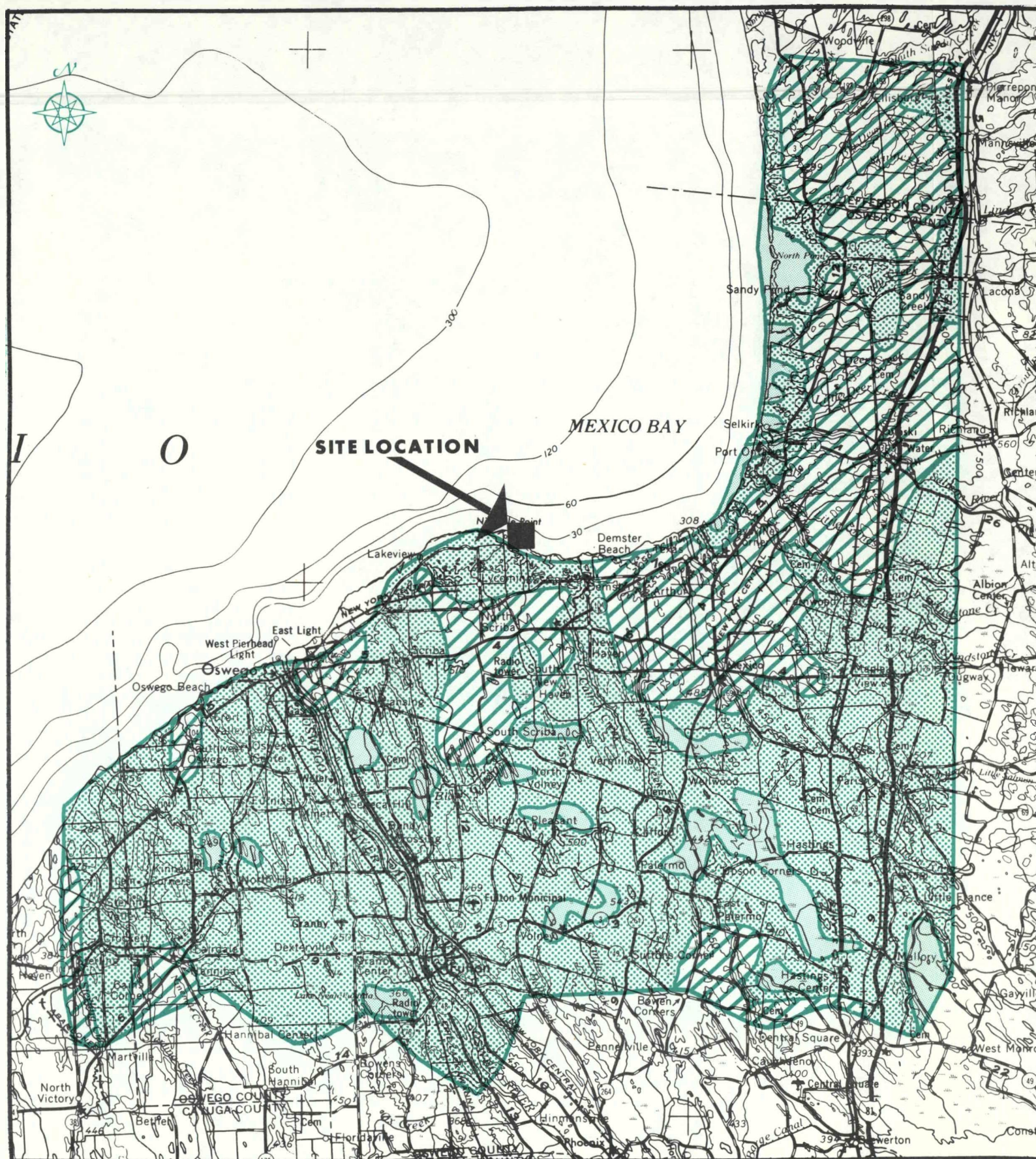
4.2 Gross-Count Data

As a first step in the analysis of the gross-count data, the background due to nonterrestrial radiation was subtracted. This background consists of cosmic-ray, aircraft, and airborne radioactivity contributions (Ref. 3). After correction for background, the data were normalized to a standard air mass. The resultant net-count data were then converted to exposure rate in microroentgens per hour ($\mu\text{R/hr}$) at the 3-foot level above the ground. The cosmic-ray exposure rate was then added back to the terrestrial exposure rate. Finally, the composite exposure rate data, together with aircraft position information, were processed into an isoexposure contour map for overlay on U. S. Geological Survey topographic maps of the survey area.

An isoexposure map of the Nine Mile Point area is shown in Figure 2. The data shown on the map include a cosmic radiation contribution of 2 to 4 $\mu\text{R/hr}$. Spatial resolution of the exposure rate data is determined by the field of view of the detector system, which is about 1/4 mile.

4.3 Spectral Data

Spectral data were recorded from about 0.03 to 3.0 MeV. The recording system was calibrated prior to takeoff with an yttrium-88 source, which emits two prominent gamma-rays of 0.898 and 1.836 MeV. The gain for each crystal in the 14-crystal detector array was set independently.



BASE FROM USGS TOPOGRAPHIC MAP SCALE 1:250,000

SCALE

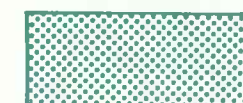
0 5 10 MILES

GAMMA EXPOSURE RATE CONTOURS NINE MILE NUCLEAR STATION, NEW YORK SEPTEMBER 1969

LEGEND



2-4 μ R/hr



4-6 μ R/hr



6-8 μ R/hr

Figure 2.

A spectrum typical of those taken during the survey is shown in Figure 3. Table 3 lists the prominent gamma-ray energies and associated source isotopes identified in the spectrum. Differences in shape between spectra taken over different portions of the survey area are minor, and the isotopes identified in all spectra are the same. Only isotopes consistent with normal background radiation are apparent.

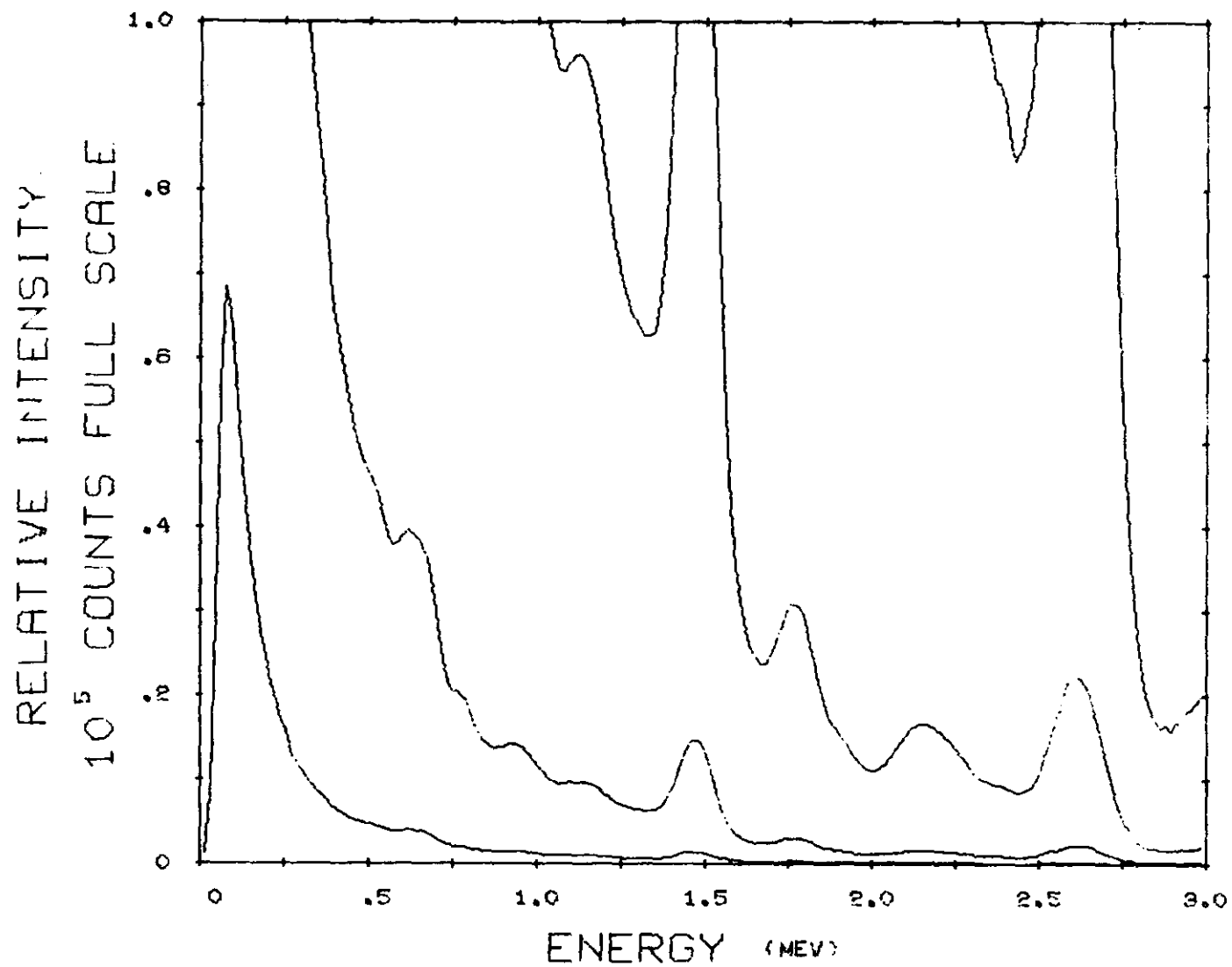


FIGURE 3. Typical gamma spectrum for survey area.

TABLE 3. Gamma-ray energies and isotopes consistent with spectral data of Figure 3.

Observed Energy (MeV)	Radionuclides Consistent With Spectral Photopeaks											
	Fission Products								Activation Products			
0.61	Bi-214
0.94	Bi-214
1.12	Bi-214
1.46	K-40
1.76	Bi-214
2.20	Bi-214
2.62	Tl-208

5. SUMMARY AND CONCLUSIONS

The gamma exposure rates and radioactive isotopes revealed in the survey of the area surrounding the Nine Mile Point Station are consistent with normal terrestrial background radiation. No significant anomalies were detected that could be attributed to reactor operations.

The 3-foot level exposure rates mapped during the survey were mostly in the 4 to 8 $\mu\text{R/hr}$ range.

REFERENCES

1. "Aerial Radiological Measuring Systems (ARMS) - Systems and Procedures Employed Through FY71," AEC Report No. ARMS-71.6, in preparation.
2. 1970 Census of Population, Advance Report PC(VI)-34, U. S. Dept. of Commerce, Bureau of Census, Jan. 1971.
3. Burson, Z. G., Boyns, P. K., and Fritzsche, A. E., "Technical Procedures for Characterizing the Terrestrial Gamma Radiation Environment by Aerial Surveys," EG&G/LVAO Report No. 1183-1559, 1972.

DISTRIBUTION

AEC/DOS

L. J. Deal (15)

AEC/NV

J. A. Koch
R. R. Loux
R. B. Purcell

AEC/TIC

Librarian (2)

EG&G/LVAO

Aerial Surveillance Dept. (30)

EG&G/SBD

H. A. Lamonds