

DISCLAIMER

This report was prepared as an account of work sponsored by an agency of the United States Government. Neither the United States Government nor any agency thereof, nor any of their employees, makes any warranty, express or implied, or assumes any legal liability or responsibility for the accuracy, completeness, or usefulness of any information, apparatus, product, or process disclosed, or represents that its use would not infringe privately owned rights. Reference herein to any specific commercial product, process, or service by trade name, trademark, manufacturer, or otherwise does not necessarily constitute or imply its endorsement, recommendation, or favoring by the United States Government or any agency thereof. The views and opinions of authors expressed herein do not necessarily state or reflect those of the United States Government or any agency thereof. Reference herein to any social initiative (including but not limited to Diversity, Equity, and Inclusion (DEI); Community Benefits Plans (CBP); Justice 40; etc.) is made by the Author independent of any current requirement by the United States Government and does not constitute or imply endorsement, recommendation, or support by the United States Government or any agency thereof.



U.S. DEPARTMENT
of **ENERGY**

Federal Energy
Management Program

REopt Federal User Support Session Two

Valerie Michel (FEMP), Kathleen Krah (NREL), Bill Becker (NREL), Dan Olis (NREL)

Sept 10, 2025

This presentation was produced when the laboratory operated as the National Renewable Energy Laboratory (NREL). The laboratory is now the National Laboratory of the Rockies (NLR).

Session 2 Overview

Agenda

- I. Welcome and Discussion

- II. Capability Overview & Demo:
Evaluating Heat Pumps in REopt

- III. Federal Success Story:
GHP at Denver Federal Center

- IV. Next Steps, Discussion, Q&A

Learning Objectives

- Understand **REopt capabilities and resources.**
- **Learn from federal colleagues** about how they're using REopt.
- **Discuss priorities for future REopt user support sessions.**

Presenters



Valerie Michel
FEMP, AAAS STPF Fellow
valerie.michel@hq.doe.gov



Bill Becker
NREL, Research Engineer
william.becker@nrl.gov



Kathleen Krah
NREL, REopt Lead
kathleen.krah@nrl.gov



Dan Olis
NREL, Senior Engineer
dan.olis@nrl.gov

Welcome to Our Second REopt Federal User Support Session!

These sessions include:

- Overviews of REopt capabilities
- Hands-on REopt trainings
- Discussion and feedback about the tool and user support
- Federal REopt case studies / success stories
- Open Q&A

We want these sessions to be helpful and engaging,
and we look forward to your input on the tool and sessions!

REopt Web Tool

REopt identifies the cost-optimal **system mix, sizing, and dispatch** for a building, campus, or microgrid to achieve site energy **cost savings** and **resilience** goals.

- Only **requires 3–4 user inputs** while offering hundreds of customizable inputs with default values
 - **Required:** Site location, energy consumption, and energy costs
 - **Optional:** Technology costs and performance, financial parameters
- Users specify their site's unique **energy goals** and **technologies of interest**
- Users can evaluate a **single site** or screen a **portfolio** of sites for distributed energy resource (DER) opportunities

Step 1: Select Use Case

Single Site

Portfolio/Sensitivity Analysis

Step 2: Choose Your Energy Goals

Cost Savings

Resilience

Clean Energy

Step 3: Select Technologies to Evaluate

PV

Battery

Grid

Wind

CHP

Prime Generator

Chilled Water Storage

Geothermal Heat Pump

Air-Source Heat Pump (Beta)

Step 4: Enter Your Site Data

Site (required)

Evaluation name * Required field

Site location * Required field [Use sample site](#)

PV & wind space available Land only Roofspace only Land & roofspace

Land available for PV & Wind (acres) Unlimited

Roofspace available (ft²) Unlimited

[Advanced Inputs](#) [Reset to default values](#)

Utilities (required)

Load Profiles (required)

Financial

Clean Energy Accounting

PV

Battery

[Reset to default values](#)

REopt Web Tool: reopt.nrel.gov/tool

Recap Session 1:

Agenda	Session 1 topics
Poll and discussion	<ul style="list-style-type: none">• What are you hoping to get out of these REopt federal user support sessions?
Federal REopt success story	<ul style="list-style-type: none">• Lynn Chan, National Parks Service: REopt national-scale screening and detailed site analyses
Capability overview, demo, and resources	<ul style="list-style-type: none">• REopt overview• Web tool demo: Basic PV and battery analysis• REopt resources and training materials
Optional homework	<ul style="list-style-type: none">• Spend 15 minutes trying REopt on your own!

Discussion: On-Site Energy

1. What types of on-site energy projects are you considering or actively working on? (e.g., technologies, goals)

Discussion: On-Site Energy

1. What types of on-site energy projects are you considering or actively working on? (e.g., technologies, goals)
- 2. What are your biggest challenges/hurdles for these projects?**

Discussion: On-Site Energy

1. What types of on-site energy projects are you considering or actively working on? (e.g., technologies, goals)
2. What are your biggest challenges/hurdles for these projects?
- 3. How familiar are you with REopt?**

Discussion: Experience using REopt

For those that have used the REopt web tool, either for last session's optional homework or for other purposes:

- What went well?
- What questions came up about how to use REopt?
- Feedback: I wish REopt could _____.

Capability Overview: Evaluating Heat Pumps in REopt

Bill Becker

What Is a Heat Pump?

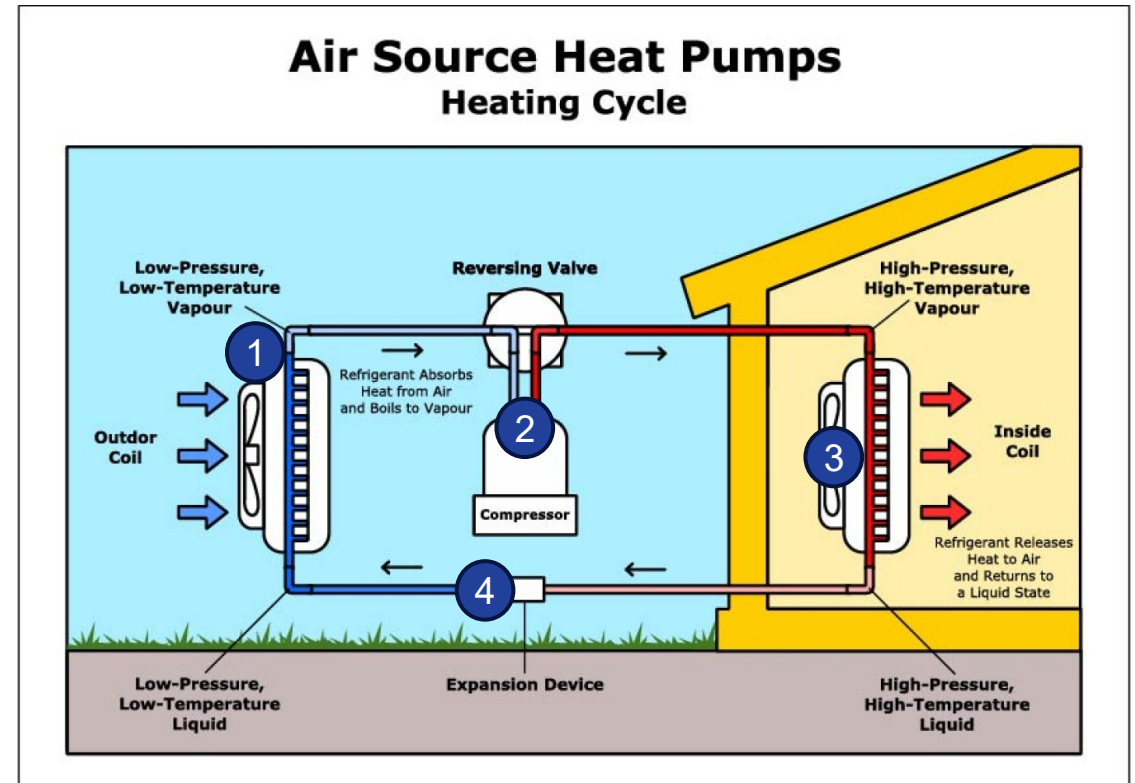
- A heat pump is a set of equipment used for **heating, ventilation, and air-conditioning (HVAC)** for space heating or cooling
- A heat pump operates as a refrigeration cycle which **transfers heat** from a **source** (e.g., outside air for **air-source heat pumps (ASHP)** or ground for **geothermal heat pumps (GHP)**) to a **sink** (e.g., inside space), and is **powered by electricity**
 - **Heating:** A heat pump extracts heat from the outside air or ground and delivers it to a conditioned space
 - **Cooling:** A heat pump extracts heat from the conditioned space and delivers it to the outside air or ground
- Heat pumps can be used to **replace or supplement** conventional HVAC equipment such as:
 - Natural gas boilers and furnaces, and resistive heaters for heating
 - Chillers and air-conditioning systems for cooling (which are also types of heat pumps)

How Do Air-Source Heat Pumps Work?

Heating mode, shown to the right:

- 1 **Outdoor air provides the heat (air-source)** for the evaporation of the refrigerant.
 - Refrigerant evaporates at very low temperatures, allowing it to absorb heat from cold outdoor air.
- 2 The compressor pressurizes the refrigerant while driving the flow of the cycle.
- 3 The pressurized vapor refrigerant is condensed by transferring heat to the indoor air, **heating the space**.
- 4 The condensed liquid is expanded to lower pressure and returns to the evaporator (outdoor unit) to repeat the cycle.

For cooling mode, the cycle is reversed and acts like an air-conditioning system.



<https://www.energy.gov/energysaver/air-source-heat-pumps>

How Do Geothermal Heat Pumps Work?

A GHP provides space heating and cooling from a **geothermal heat exchange (GHX) loop** that is placed in the ground and facilitates **heat exchange between the ground and the building**.

As with ASHPs, a **refrigeration cycle** facilitates energy transfer between the GHX loop and the building.

GHPs are sometimes called ground-source heat pumps, geo-exchange, earth-sourced, ground-coupled, etc.

A GHP **is not:**

- Direct use from a hot reservoir
- Power generation

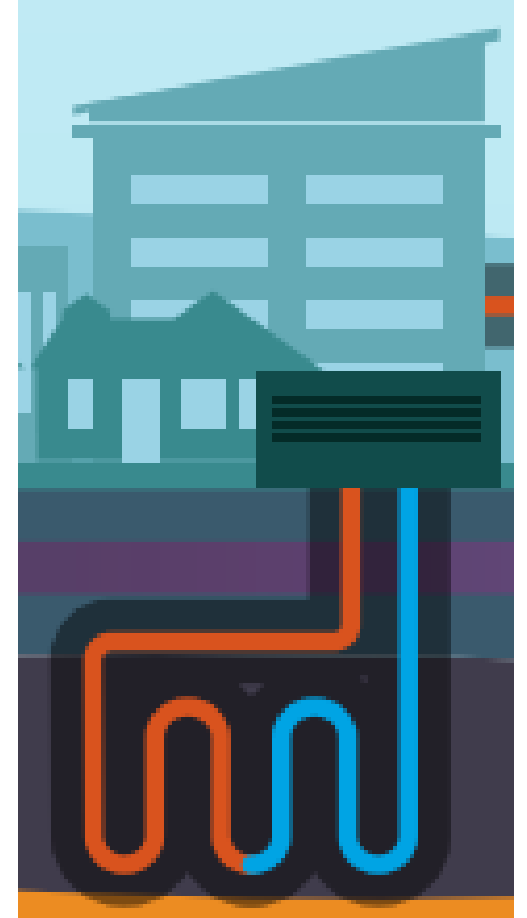


Image Credit-NREL

ASHP Technology Selection in REopt Web Tool

Step 3: Select Technologies to Evaluate

PV ☀️

Battery 🔋

Grid ⚡️

Wind 🌬️

CHP 🏭

Prime Generator ⚡️

Chilled Water Storage ❄️

Geothermal Heat Pump 🌐

Air-Source Heat Pump (Beta) 🌬️🔥 (for space heating)

Also evaluate ASHP water heater to serve the domestic hot water load: ⓘ

ASHP Water Heater 🌬️🔥 (for domestic hot water (DHW) heating)

Air-Source Heat Pump configuration ⓘ

1: Hybrid heating

Air-Source Heat Pump configuration ⓘ

1: Hybrid heating

2: Full replacement heating

3: Hybrid heating and cooling

4: Full replacement heating and cooling

When selected, expands to show these options

Click the blue "tool tip" for more information about each configuration

GHP Technology Selection in REopt Web Tool

Require GHP in the solution?:

- Yes or no
- *Note: GHPs cannot currently be evaluated as supplementary to the existing system due to REopt's modeling framework*

Heat pump configuration options:

- **Distributed water-to-air heat pumps (WAHP)**, sometimes called water-source heat pumps
- **Central plant water-to-water heat pumps (WWHP)**

Heat exchanger (GHX) configuration:

- **Closed loop, vertical bores** most common in commercial applications
- **Optional Hybrid GHX:**
 - Supplement heat sink/source with boiler or cooling unit
 - Can be used with WWHPs or distributed WAHPs
 - Not an option for sites with large-asymmetric heating and cooling loads

Geothermal Heat Pump

Require GHP purchase in the solution ? No

Heat pump configuration ? No

GHX configuration ? Non-hybrid

Geothermal Heat Pump

Require GHP purchase in the solution ? No

Heat pump configuration ? Distributed water-to-air heat pumps (WAHP)

GHX configuration ? Distributed water-to-air heat pumps (WAHP)

Geothermal Heat Pump

Require GHP purchase in the solution ? No

Heat pump configuration ? Distributed water-to-air heat pumps (WAHP)

GHX configuration ? Hybrid

Total installed cost for heat pump (\$/ton) ? Non-hybrid

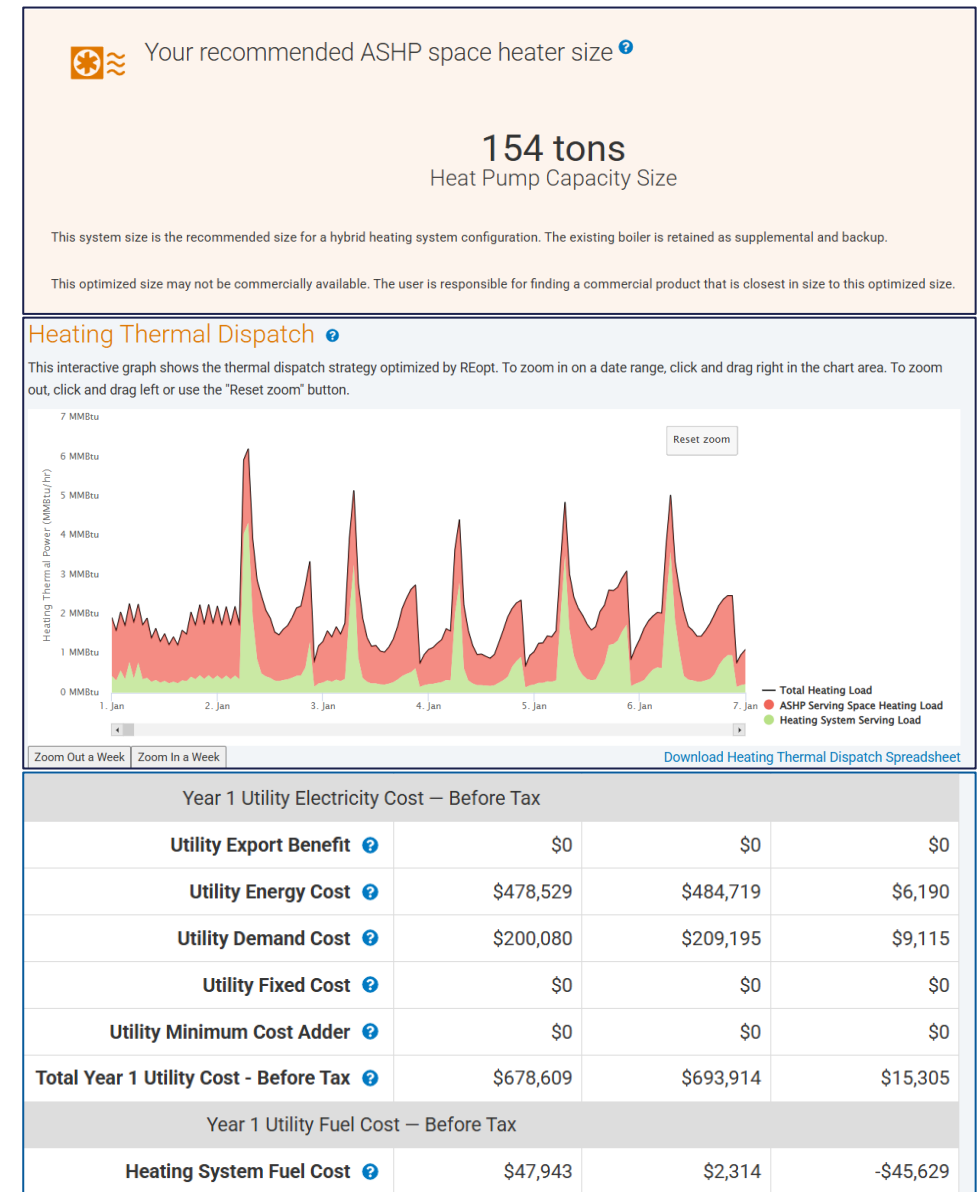
Heat Pump Results

- Heat pump **size** (ton)
- **Operations** data for how the load is served, with or without the existing heating system
- Annual **energy** production
- Annual average **performance**
- And all the other outputs that REopt provides for any technology, such as investment costs, energy costs, and **financial metrics**

Size

Operations

Financials



REopt Demo

<https://reopt.nrel.gov/tool>

Notes:

- When evaluating multiple heat pump technologies concurrently, REopt will only pick one heat pump technology in the solution (or none).
- For faster solve times and to compare heat pump technology cost-effectiveness, consider running REopt multiple times.
- REopt offers high-fidelity screening for DER potential, but is not a design tool. Consultation with heat pump engineering companies is strongly recommended before making investment decisions.

Step 1: Select Use Case

Single Site

Portfolio/Sensitivity Analysis

Step 2: Choose Your Energy Goals

Cost Savings

Resilience

Renewable Energy & Emissions

Step 3: Select Technologies to Evaluate

PV

Battery

Grid

Wind

CHP

Prime Generator

Chilled Water Storage

Geothermal Heat Pump

Air-Source Heat Pump (Beta)

Step 4: Enter Your Site Data

Site (required)

Evaluation name

Site location

Use latitude & longitude

PV & wind space available Land only Roofspace only Land & roofspace

Land available for PV & Wind (acres)

Advanced inputs

Utilities (required)

Load Profiles (required)

Financial

Renewable Energy & Emissions Accounting

PV

Battery

Federal Success Story: Geothermal Heat Pumps at Denver Federal Center

Geothermal Heat Pump REopt Analysis at Denver Federal Center

GSA's Denver Federal Center has **distributed water-source heat pumps** connected to a building-interior water loop.

REopt was used to evaluate the integration of a **geothermal heat exchanger** into the heat pump system to replace (**non-hybrid**) or supplement (**hybrid**) the boiler and cooling tower used to maintain the water loop temperature within specified temperature limits.

The analysis suggested hybrid GHX could provide cost savings while the non-hybrid GHX may increase energy costs at this site.



<https://www.energy.gov/femp/denver-federal-center-geothermal-heat-pump-reopt-analysis>

Discussion, Q&A, Next Steps

What's New and What's Coming Soon in REopt

Recent Updates

- **Solar photovoltaics (PV) and battery cost scaling:** PV and battery cost assumptions adjust based on the likely system size (e.g., residential vs. commercial vs. industrial)
- **Portfolio and sensitivity analysis enhancements:** Screen multiple sites for DER opportunities or explore how key assumptions impact results.

Coming Soon (~1 month)

- **Federal default values:** Financial assumptions prescribed by statute for the federal sector
- **Simulate electric vehicle charging loads** to be considered in DER sizing
- **Concentrated solar thermal** as a technology option

Next Steps

- **Please help spread the word!** Who else do you know who might benefit from REopt?
- **Optional homework:** Spend 15 minutes using REopt to evaluate ASHP or GHP at your site! Jot down the following (and optionally email reopt@nrel.gov):
 - Questions about how to use REopt
 - Feedback: I wish REopt could _____.
- **Success stories? Feedback?** Please reach out to Valerie (valerie.michel@hq.doe.gov) and/or Kathleen (kathleen.krah@nrel.gov) to share how REopt is supporting energy decisions at your agency!

Additional REopt Resources

- **FEMP REopt training webinars:**
 - [Evaluating Your Utility Rate Options](#)
 - Additional recent REopt training webinars to be posted for on-demand access in the coming months.
- **General REopt Resources:**
 - YouTube Tutorial Series: youtube.com/watch?v=DEeCdVfU0VU&feature=emb_logo
 - User Manual: reopt.nrel.gov/tool/reopt-user-manual.pdf
 - User Forum: github.com/NREL/REopt-Analysis-Scripts/discussions
 - Project Examples: nrel.gov/reopt/projects/

Request Project Assistance!

Review FEMP's [Distributed Energy Technical Assistance](#) services.

Ready to start? [Request Technical Assistance](#).

Federal Energy Management Program's Distributed Energy Catalog of Services

The Federal Energy Management Program (FEMP) can provide limited funding to federal agencies that are committed to implementing distributed energy projects—including on-site renewable energy, storage, and combined heat and power technologies—with targeted technical assistance to help them complete their projects.

Review FEMP's list of renewable energy technical assistance services below.

Ready to start?

[Request Technical Assistance >](#)

Q&A

Thank you!

Valerie Michel (FEMP), valerie.michel@hq.doe.gov

Kathleen Krah (NREL), kathleen.krah@nrl.gov

Bill Becker (NREL), william.becker@nrl.gov

Dan Olis (NREL), dan.olis@nrl.gov



U.S. DEPARTMENT
of **ENERGY**

Federal Energy
Management Program

NLR/PR-7A40-97025

This work was authored in part by the National Laboratory of the Rockies for the U.S. Department of Energy (DOE), operated under Contract No. DE-AC36-08GO28308. Funding provided by U.S. Department of Energy Office of Energy Efficiency and Renewable Energy Federal Energy Management Program Office. The views expressed in the article do not necessarily represent the views of the DOE or the U.S. Government. The U.S. Government retains and the publisher, by accepting the article for publication, acknowledges that the U.S. Government retains a nonexclusive, paid-up, irrevocable, worldwide license to publish or reproduce the published form of this work, or allow others to do so, for U.S. Government purposes.