

Fracture Networks Imaging in CO2 Injection Zones in IBDP Site: An Unsupervised Machine Learning Application with Multiple Datasets

Abhash Kumar^{1,2}; William Harbert^{1,4}; Evgeniy Myshakin^{1,2}; Guoxiang Liu^{1*}, Hema Siriwardane³

¹National Energy Technology Laboratory, 626 Cochran Mill Road, Pittsburgh, PA 15236, USA; ²NETL Support Contractor, 626 Cochran Mill Road, Pittsburgh, PA 15236, USA; ³National Energy Technology Laboratory, 3610 Collins Ferry Road, Morgantown, WV 26505; ⁴Oak Ridge Institute for Science and Education, 1299 Bethel Valley Road, Oak Ridge, TN 37830, USA

* Corresponding author. Tel.: +1-412-386-7386, E-mail address: guoxiang.liu@netl.doe.gov



Science-informed Machine Learning to Accelerate Real Time (SMART) Decisions in Subsurface Applications

Introduction

- Mapping fracture and fault networks is crucial for the safety, security, and environmental sustainability of CO₂ sequestration projects. It ensures that potential risks are identified and mitigated effectively.
- Accurate mapping of fracture network enables the identification of preferential flow paths for CO₂ migration. This understanding helps optimize injection strategies and predict CO₂ movement within the reservoir, enhancing the efficiency and reliability of sequestration efforts.
- In the ongoing SMART Phase II efforts, a suite of machine learning algorithms have been employed to quantify the temporal and spatial distributions of fracture networks at the CO₂ injection site for the Illinois Basin – Decatur Project (IBDP). These advanced techniques provide detailed insights into the evolving fracture systems.

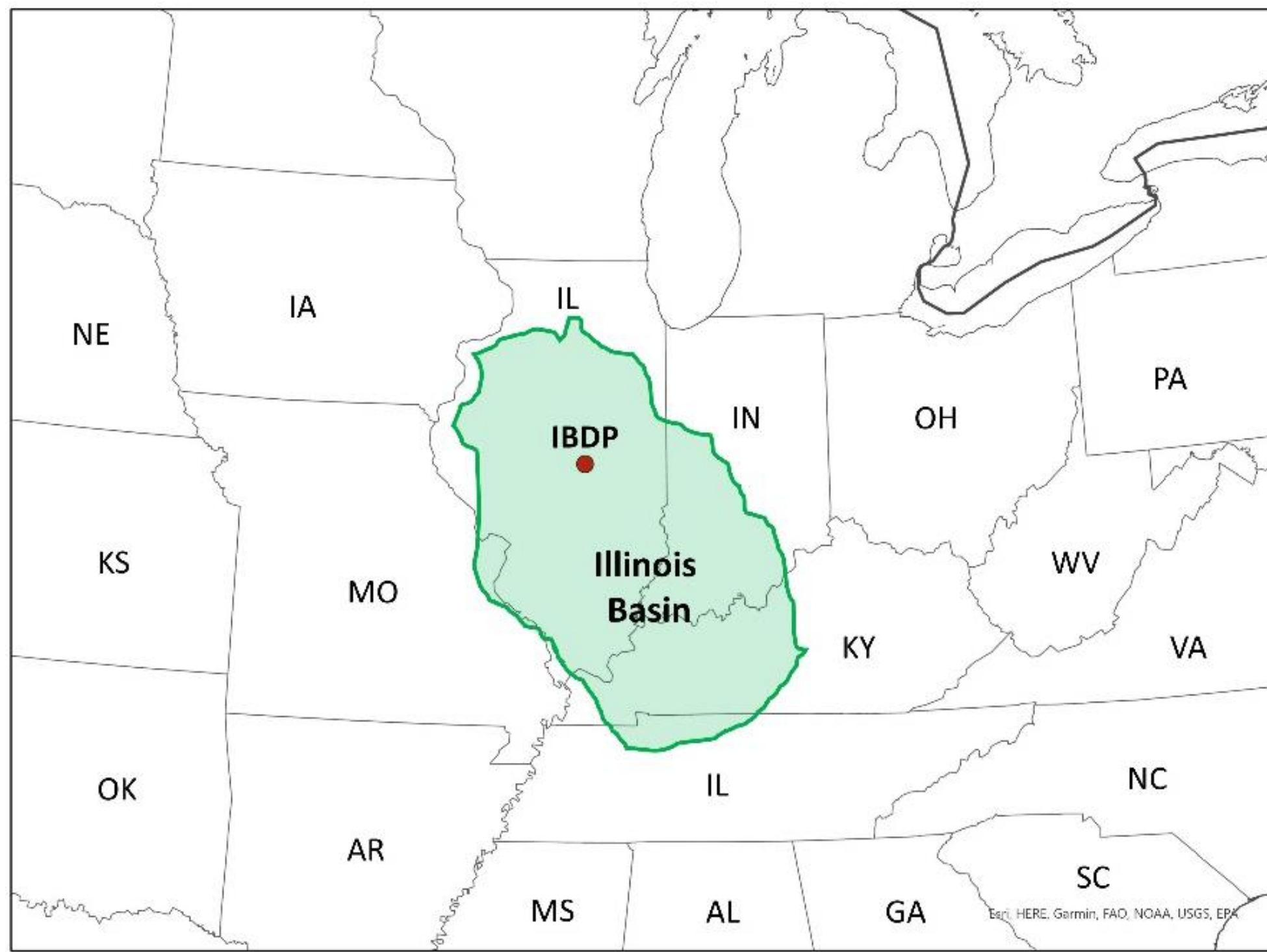


Figure 1. Map showing the location of IBDP site (red dot) within the Illinois Basin (green shaded region).

Data & Site Details

- The Illinois Basin – Decatur Project (IBDP) is a carbon capture and storage (CCS) initiative undertaken by the Midwest geological sequestration consortium. It is located in east-central Illinois within the north-central region of the Illinois Basin.
- Approximately 1 million tonnes of super critical CO₂ were injected into the lower Mt. Simon Sandstone at the IBDP site over a period of three years, from November 2011 until November 2014.
- For this study, the microseismic catalog recorded by subsurface arrays from three separate wells at the IBDP site has been utilized, providing critical data for fracture network quantification.
- The preliminary microseismic catalog was comprised of 5397 events, which were subsequently relocated utilizing a modified version of HypoDD, resulting in the successful relocation of 4293 events.
- In addition to microseismic, the study also incorporates injection-related data, such as bottomhole pressure and CO₂ flow rate, to provide a comprehensive analysis of the reservoir engineering parameters.

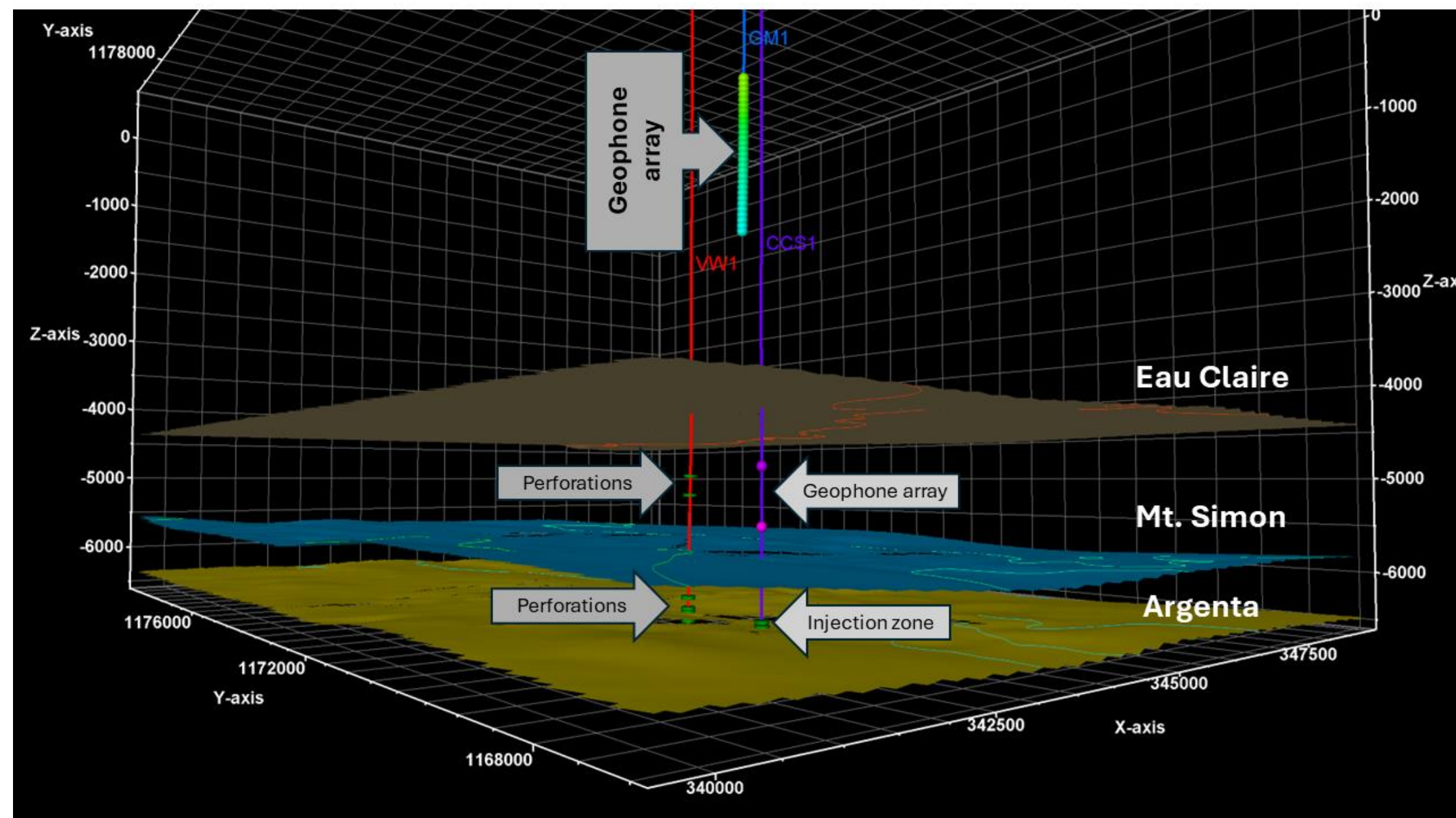


Figure 2. Configuration of borehole and seismic monitoring network at the IBDP site.

Methods

- The magnitude of completeness and seismicogenic b-value are calculated for the microseismic catalog. These parameters help infer the dominant stress regime and failure mode of the recorded seismic events.
- Discrete microseismic time windows are determined based on variations in bottomhole pressure recordings.
- The concept of hydraulic diffusivity is employed to identify discrete microseismic triggering fronts within each time window.
- A suite of unsupervised machine learning algorithms is tested to identify spatial clusters of microseismic events within each triggering front of individual time windows.
- Two-sigma standard deviational ellipsoids are fitted to individual microseismic clusters, capturing the spatial variation of event distribution in each cluster.
- The eigenvectors corresponding to the largest eigen value of each standard deviational ellipsoid are extracted. These eigenvectors represent the trace of 3D distribution of fracture planes around the injection well.

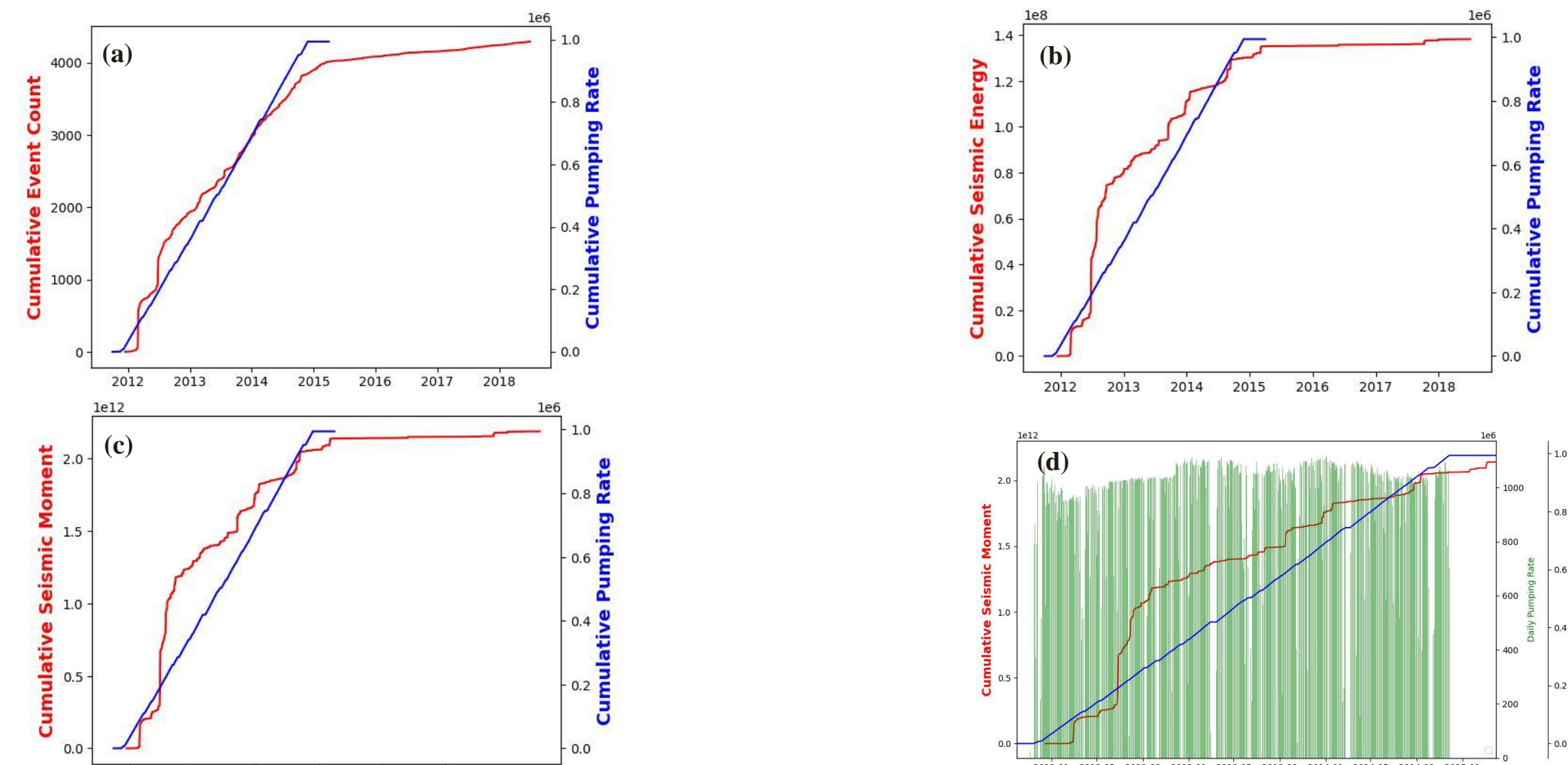


Figure 3. Plots showing the comparison of cumulative pumping rate with (a) event count, (b) seismic energy, (c) seismic moment, and (d) joint variation of seismic moment and daily pumping rate (green bars).

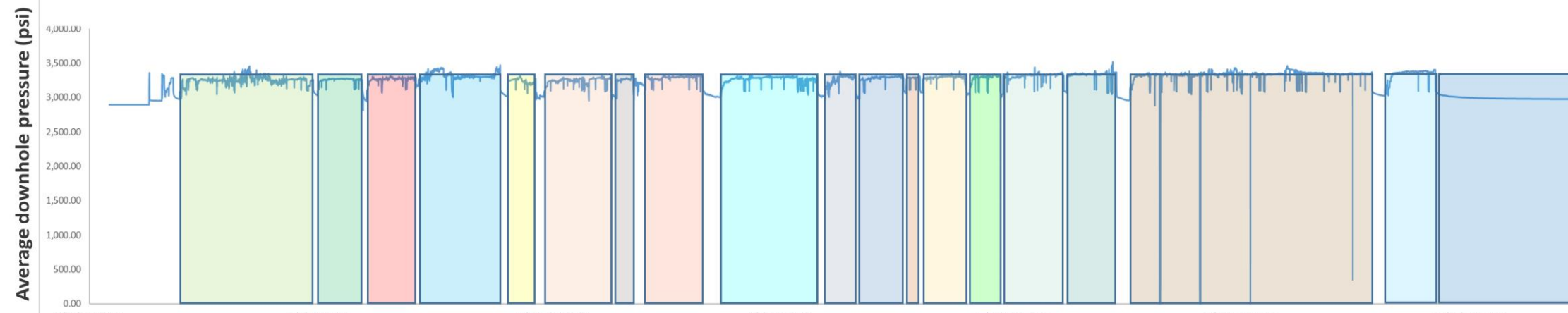


Figure 4. Plots showing the variation in average downhole pressure. Nineteen microseismic time windows (shaded boxes) marked by extended period of bottomhole pressure changes.

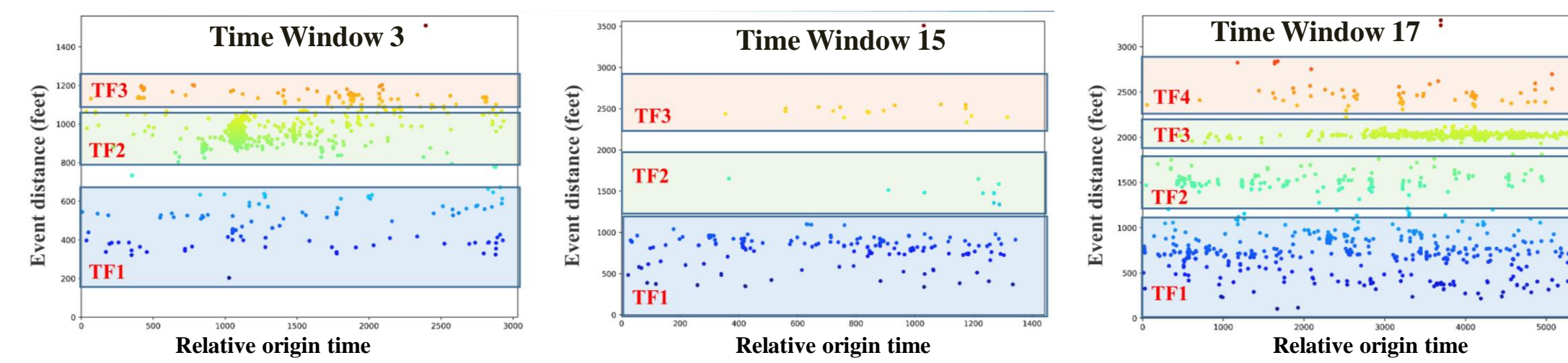


Figure 5. Discrete triggering fronts (shaded rectangles) identified within each microseismic time window.

Workflow

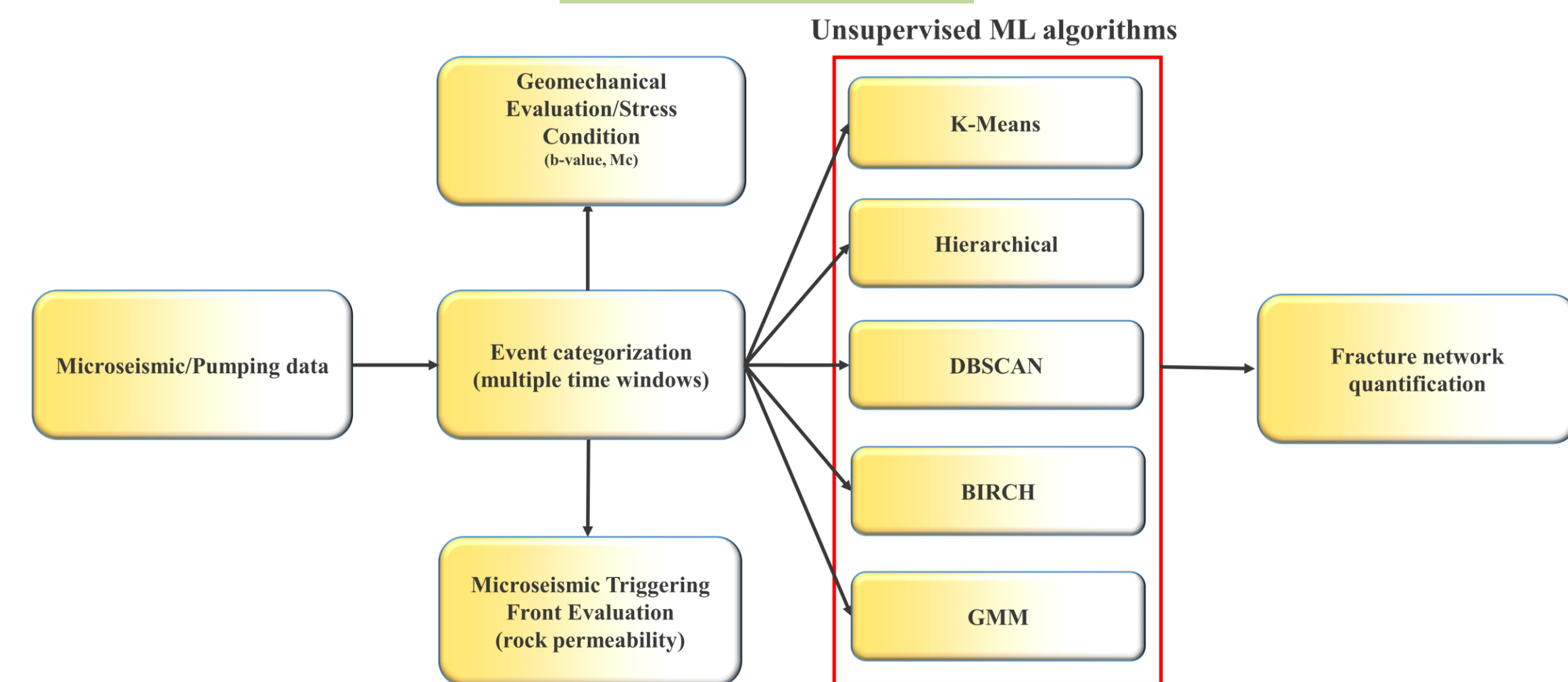


Figure 6. Diagram showing the workflow of the current study for fracture network mapping.

Results

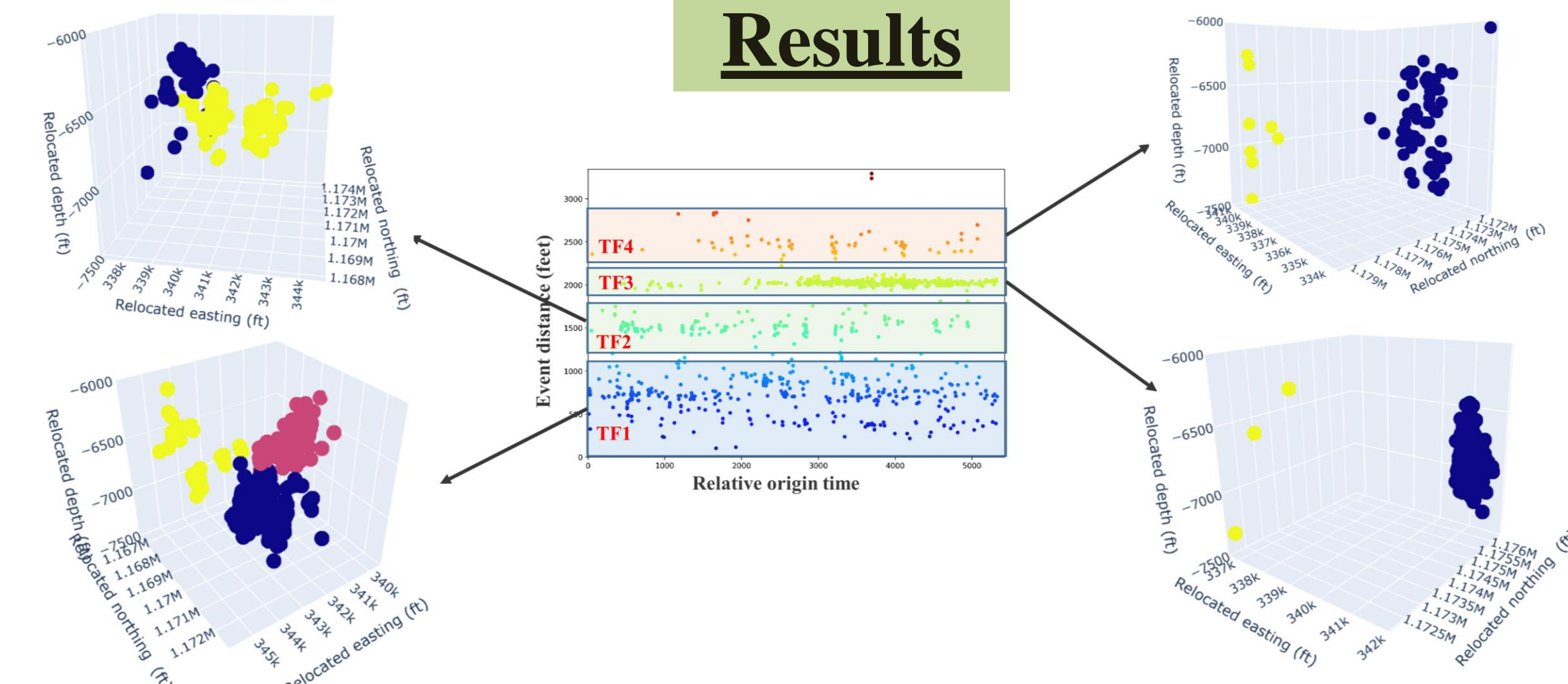


Figure 7. Identified clusters of microseismic events within each triggering front of time window 17 (center plot).

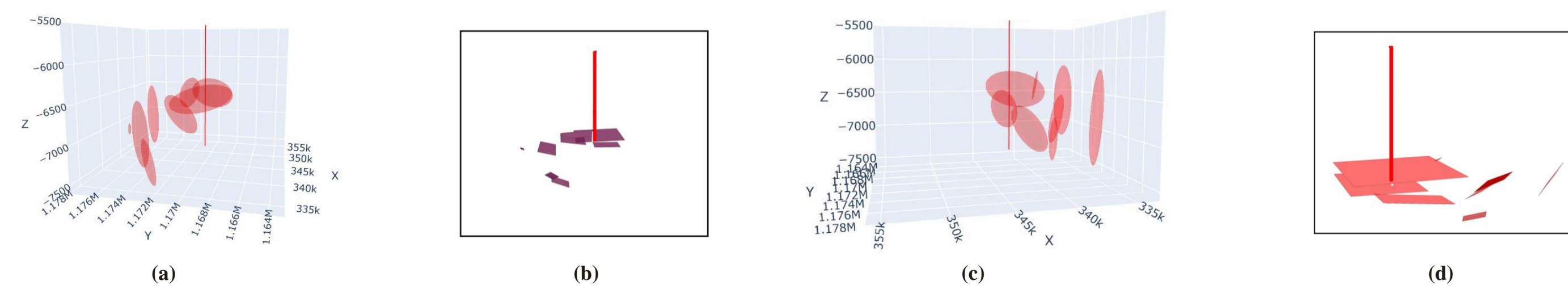


Figure 8. 3D distribution of fracture ellipsoids (red ellipsoids) and fracture planes around the injection well (red line) for time windows 16 (a, b) and 17 (c, d).

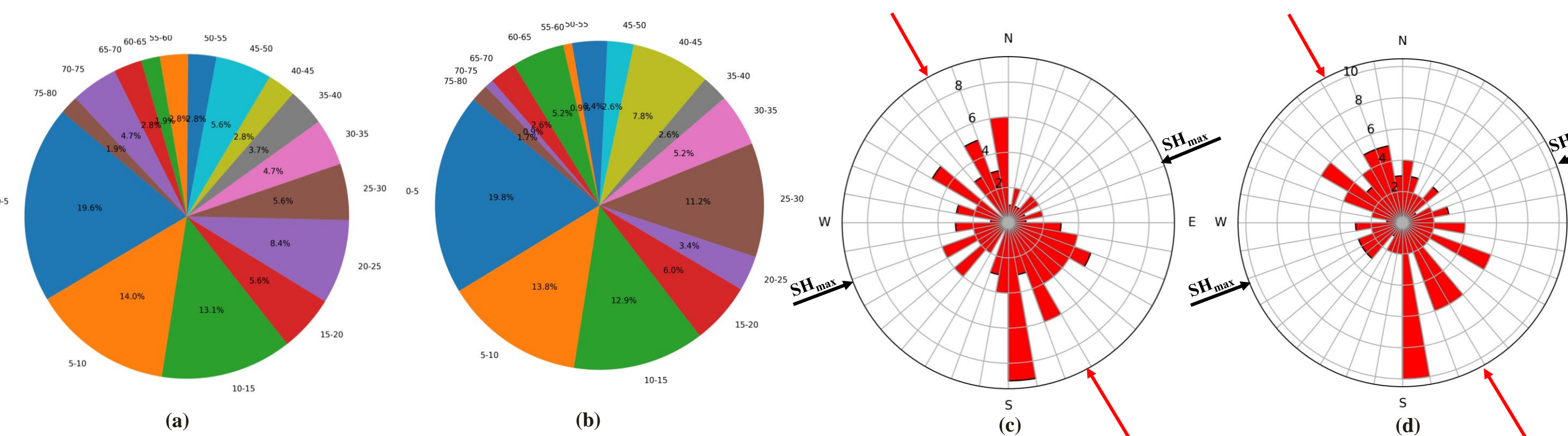


Figure 9. Fracture attributes showing variation in the amount of dip for (a) K-Means, (b) Hierarchical; and dip direction for (c) K-Means, (d) Hierarchical .

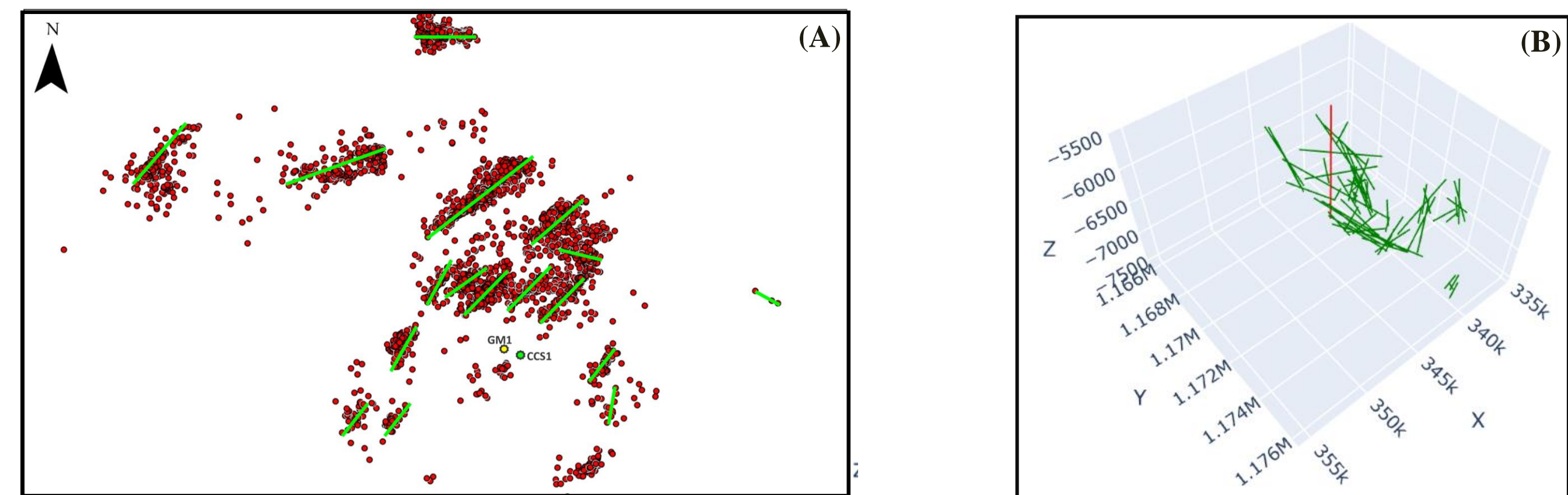


Figure 10. (A) Previously identified fault plane solutions (green lines) for the microseismic clusters. (B) 3D distribution of fracture network (green lines) around the injection well as determined using machine learning techniques in the current study.

Acknowledgements

This work was performed in support of the U.S. Department of Energy's (DOE) SMART Research Initiative. We would like to thank Illinois State Geologic Survey for providing microseismic data and pumping data from the IBDP site that was used in this fracture network mapping study.

References

- Liu, G., Siriwardane, H., Kumar, A., Harbert, W., Crandall, D., and Cunha, L., 2024, Fracture Analysis and Mapping in The Illinois Basin Carbon Dioxide Storage Site, American Rock Mechanics Association Conference, Golden, Colorado.
- Liu, G., Kumar, A., Harbert, W., Crandall, D., Siriwardane, H., Bromhal, G., and Cunha, L., 2023, Machine Learning Application for CCUS Carbon Storage: Fracture Analysis and Mapping in The Illinois Basin, SPE Annual Technical Conference and Exhibition, San Antonio, Texas.

Disclaimer

This project was funded by the United States Department of Energy, National Energy Technology Laboratory, in part, through a site support contract. Neither the United States Government nor any agency thereof, nor any of their employees, nor the support contractor, nor any of their employees, makes any warranty, express or implied, or assumes any legal liability or responsibility for the accuracy, completeness, or usefulness of any information, apparatus, product, or process disclosed, or represents that its use would not infringe privately owned rights. Reference herein to any specific commercial product, process, or service by trade name, trademark, manufacturer, or otherwise does not necessarily constitute or imply its endorsement, recommendation, or favoring by the United States Government or any agency thereof. The views and opinions of authors expressed herein do not necessarily state or reflect those of the United States Government or any agency thereof.