

LA-UR-24-20664

Approved for public release; distribution is unlimited.

Title: RECAP October & November 2023 Highlights

Author(s): Mangum, Taylor Don

Intended for: Report

Issued: 2024-01-24



Los Alamos National Laboratory, an affirmative action/equal opportunity employer, is operated by Triad National Security, LLC for the National Nuclear Security Administration of U.S. Department of Energy under contract 89233218CNA000001. By approving this article, the publisher recognizes that the U.S. Government retains nonexclusive, royalty-free license to publish or reproduce the published form of this contribution, or to allow others to do so, for U.S. Government purposes. Los Alamos National Laboratory requests that the publisher identify this article as work performed under the auspices of the U.S. Department of Energy. Los Alamos National Laboratory strongly supports academic freedom and a researcher's right to publish; as an institution, however, the Laboratory does not endorse the viewpoint of a publication or guarantee its technical correctness.

RECAP

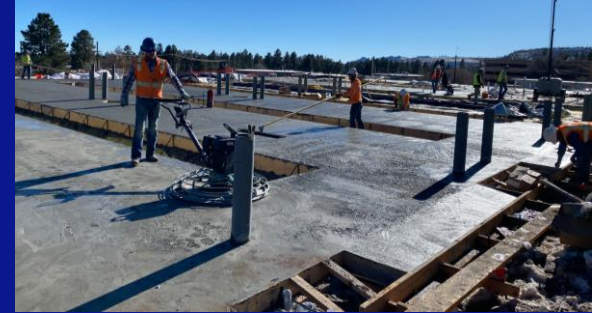
October & November 2023

Highlights

December 14, 2023

90.3.356 Fire Station 5

- Second concrete placement completed in early December
- Apparatus bay placement includes box-outs for trench drains
- Concrete work 95% complete – misc. placements at plumbing boxouts to be worked as scheduled



90.3.356 Fire Station 5

- Progress photos of the apparatus bay concrete placement



90.3.358 FITL / 90.3.351 DARHT Hydro

- Preconstruction site prep (temp construction roads, fencing and clearing and grubbing) work for FITL is 100% complete. DVR site prep is 90%.



90.3.432 Fire Station 1

- Preconstruction utility work is wrapping up. Overhead powerline was realigned to skirt the northern boundary of the site. Final tie-ins are expected in January, but winter weather may affect completion



90.3.425 RLUOB Secondary Fire Pump

- Commissioning and testing activities underway – full operation of pump with water released under the NOI permits and dechlorination machine
- Testing of control system
- Facility engineers and operations staff walking down enclosure
- Once Cx is complete, turnover to ops will begin

