

LA-UR-23-32016

Approved for public release; distribution is unlimited.

Title: LANL & SPO Overview for SCGSR

Author(s): Holtzclaw-Stone, Heather Nicole

Intended for: Presentation for DOE Office of Science Graduate Student Research Program

Issued: 2023-10-20



Los Alamos National Laboratory, an affirmative action/equal opportunity employer, is operated by Triad National Security, LLC for the National Nuclear Security Administration of U.S. Department of Energy under contract 89233218CNA000001. By approving this article, the publisher recognizes that the U.S. Government retains nonexclusive, royalty-free license to publish or reproduce the published form of this contribution, or to allow others to do so, for U.S. Government purposes. Los Alamos National Laboratory requests that the publisher identify this article as work performed under the auspices of the U.S. Department of Energy. Los Alamos National Laboratory strongly supports academic freedom and a researcher's right to publish; as an institution, however, the Laboratory does not endorse the viewpoint of a publication or guarantee its technical correctness.



LANL & SPO Overview for SCGSR

Nicole Holtzclaw-Stone, Ph.D.

October 17, 2023

LA-UR-



Managed by Triad National Security, LLC., for the U.S. Department of Energy's NNSA.

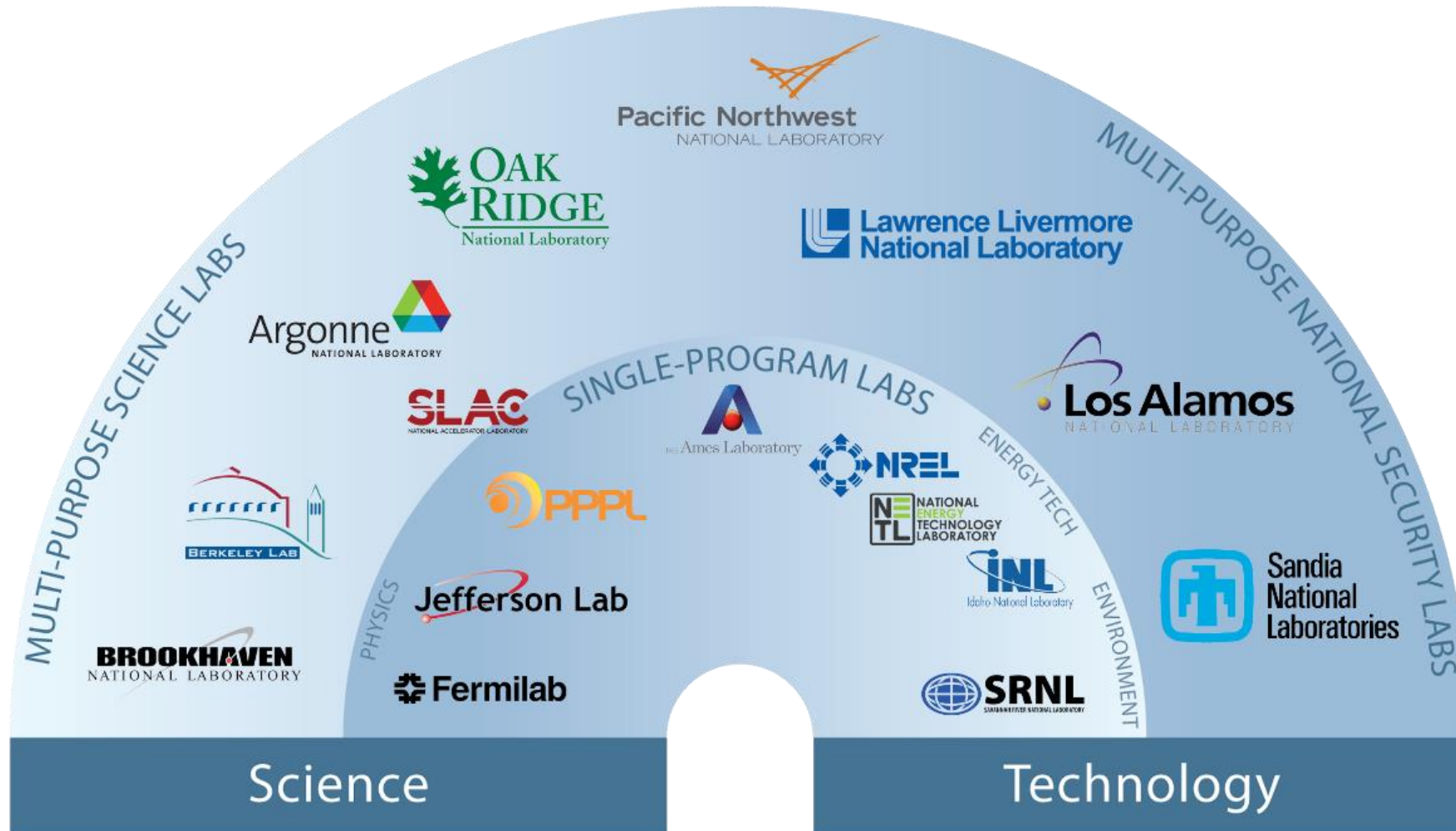
10/2/2023

LANL Overview: A common goal

A Common Goal:

https://www.youtube.com/watch?v=g_QOV3UAjuk

17 Department of Energy national laboratories



LANL is a key part of the U.S. nuclear security enterprise

National labs
& test sites



LANL*



Lawrence Livermore
National Laboratory



Nevada National Security Site



Sandia National Laboratories*

Production
complexes



Kansas City Nat. Security
Campus



Pantex Plant



Savannah River Site



Y-12 National Security Complex

*Also production facilities

10/2/2023



80 years serving the nation

- In 1943, Los Alamos National Laboratory was founded with a single, urgent purpose: to build an atomic bomb
- Today, LANL focuses on maintaining a strategic nuclear deterrent to protect the nation's security
- Our workers, facilities, and instruments:
 - Detect nuclear weapons and improvised devices
 - Promote cooperation and diplomacy
 - Limit nuclear arms and the spread of nuclear materials, technology, and expertise
 - Advance the frontiers of science and engineering



Employees manipulate materials inside a glovebox at TA-55.

LANL by the numbers



40

size of the site, in
square miles



13

Employee Resource
Groups (ERGs)



\$130K

average salary



17,273

total workforce



49%

staff who identify
as minority



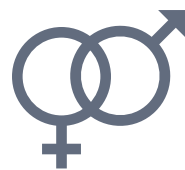
3,500

telework or hybrid
employees



~2,100

hires in FY22



33/67

staff who ID as
female/male

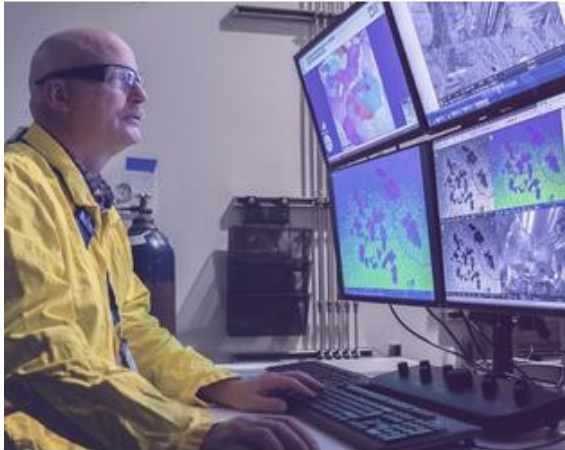


\$103K

average starting
salary

Lab Agenda outlines our priorities

Nuclear Deterrent



Lead the nation in evaluating, developing, and ensuring effectiveness of our nuclear deterrent, including the design, production, and certification of current and future nuclear weapons.

Threat Reduction



Anticipate persistent and emerging threats to global security; develop and deploy revolutionary tools to detect, deter, and respond proactively.

Trustworthy Operations



Consistently demonstrate and be recognized by diverse stakeholders for trusted and trustworthy operations.

Technical Leadership



Deliver scientific discoveries and technical breakthroughs to advance relevant research frontiers and anticipate emerging national security risks.



World-class science underpins the mission

- LANL is the design lab for 4 of the 7 weapons systems in the on-alert deterrent
- U.S. nuclear testing ended in 1992, but weapons are highly complex and dynamic
 - Modern stockpile stewardship involves testing facilities, surveillance, supercomputing, & more
- Science developed via LANL's stockpile research also advances:
 - Climate change, vaccine development, cybersecurity, epidemic & disaster modeling, space exploration, and many more fields



Modernizing our site to attract and retain the workforce



Breaking ground for new cell towers

- Significantly improving our 40-square-mile campus
- This work positively impacts the area economy



One of the new Santa Fe offices, occupied in 2021

- Leased facilities in Northern NM connect the community to LANL events like STEM education and teacher development



Photo credit UbiQD

UbiQD, which uses technology spun off from LANL, installs a solar window at a NM hotel.

- LANL directly & indirectly creates 24,000 jobs in the state

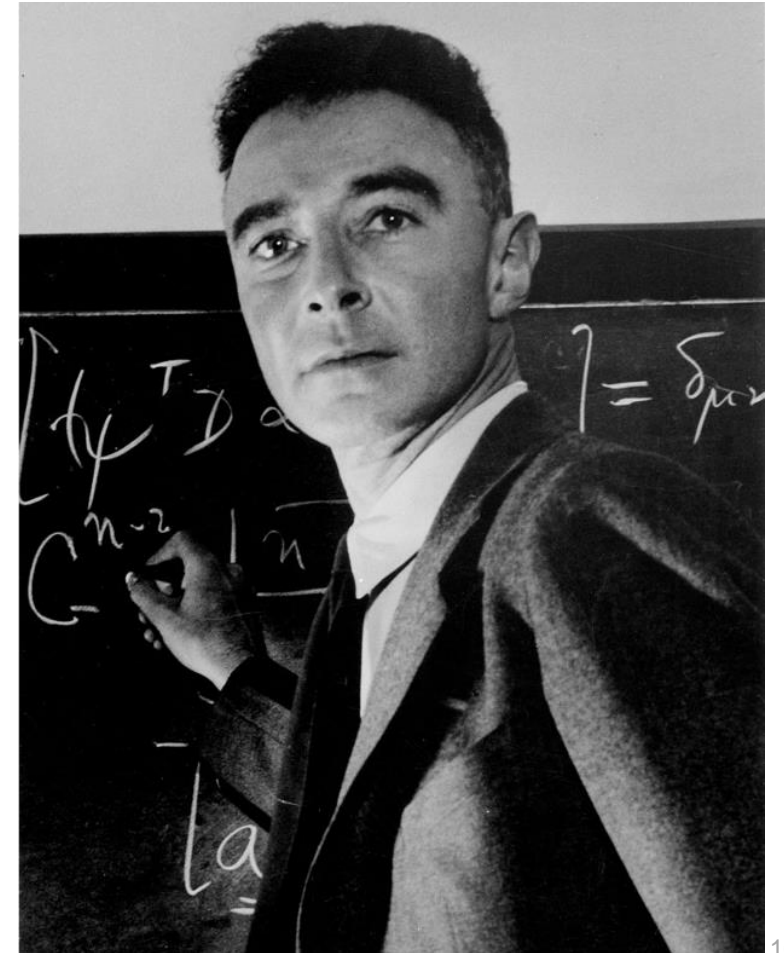


LANL's work helps the U.S. stay competitive in a shifting geopolitical landscape

“There must be no barriers for freedom of inquiry. There is no place for dogma in science.

The scientist is free, and must be free, to ask any question, to doubt any assertion, to seek for any evidence, to correct any errors.”

—J. Robert Oppenheimer



Los Alamos delivers national security solutions

We are dedicated to addressing complex national security issues and the world's most difficult challenges

- By applying multidisciplinary science, technology & engineering capabilities;
- In unique experimental, computational, and nuclear facilities;
- With an agile, responsive, and innovative workforce;
- And by partnering with peer institutions for mission success



LANL STATISTICS

\$4B budget

40 square miles,
47 technical areas

897 bldgs.,
8.4M sq ft.

13 nuclear facilities

15,000 workers

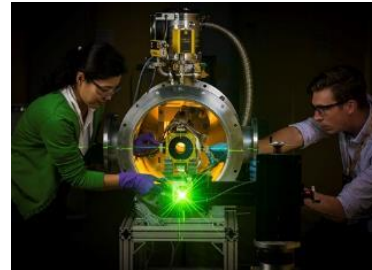
~10,000 career employees

1,850 students,
462 postdocs

Employee average age:
43

67% male;
33% female
49% minorities

40.2% of employees are native New Mexicans



Student Programs

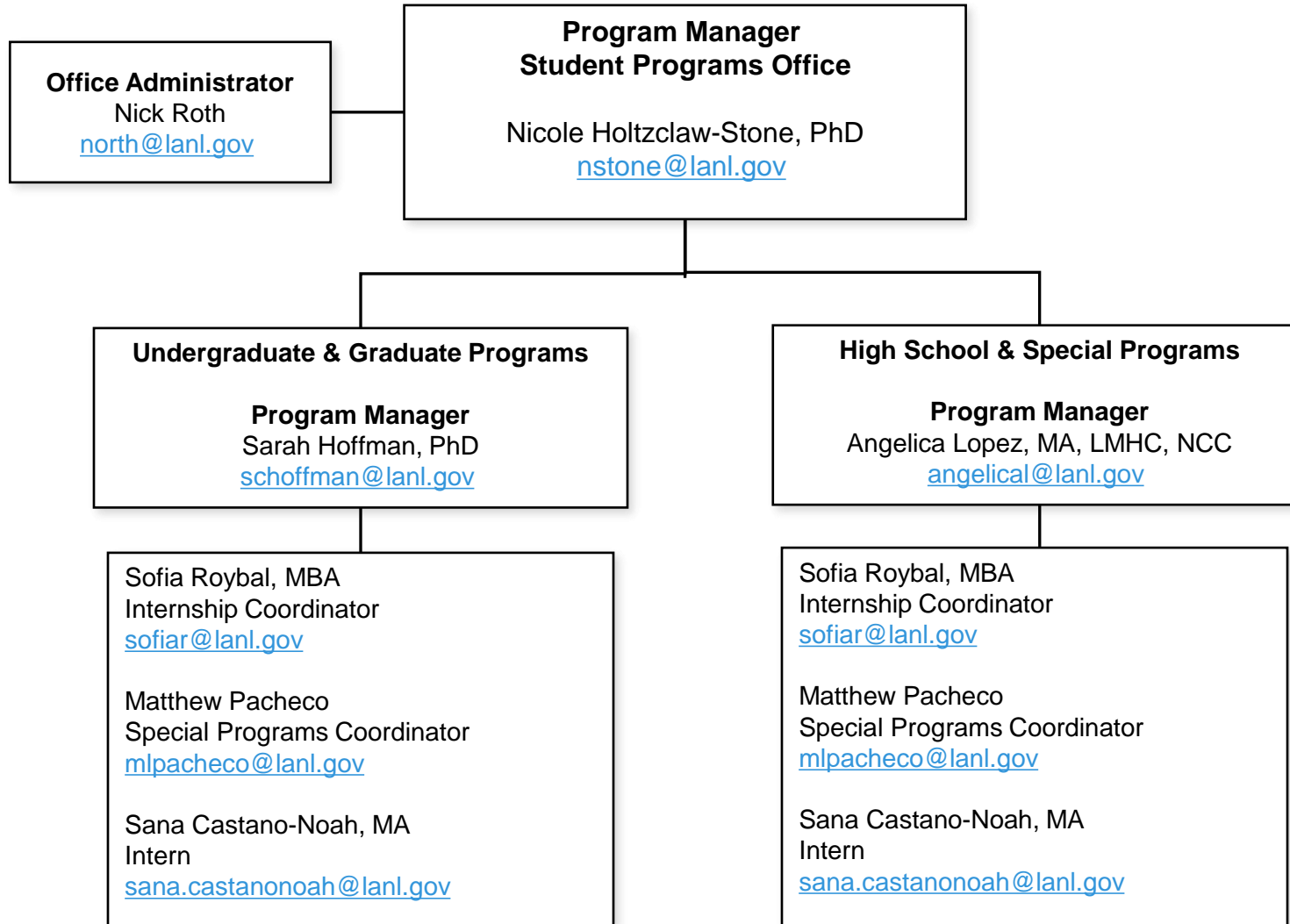
Further the Laboratory's goal of developing and mentoring the next generation of scientific, technical, and professional staff by supporting:

- 2,000+ interns at all levels (high school, undergraduate, graduate, and postgraduate)
- 2,000+ mentors, 70 division student liaisons

Our activities:

- Internship promotion and external engagement
- Intern identification and sourcing
- Training and orientation
- Professional and career development
- Social and community engagement
- Compliance

Student Programs Office (SPO)



Important Next Steps

- Housing
 - If you will be relocating to Los Alamos, housing is a challenge. Housing resources follow on the next slides
 - Be in touch with your mentor
 - Complete all preboarding and onboarding paperwork requested of you
 - LANL SCGSR participants onboard as **Official Student Guests** and must complete the following:
 1. Complete requested sections on **Form 1298: Student Guest Agreement**
 2. Provide copies of **current transcript** (may be unofficial) and **resume/CV** to LANL host organization
- Questions regarding the pre- and onboarding processes can be directed to Matthew Pacheco, mlpacheco@lanl.gov, or Angelica Lopez, angelical@lanl.gov
- After appointment begins, complete all onboarding activities, including [badging](#) and required trainings

Housing Resources

We encourage you to look for housing as early as possible.

- [LANL Student Housing website](#)
- The following services are external to LANL and we do not have any quality control over them. Please do your own research and check reviews and/or references prior to signing a contract. You should use the same degree of care in selecting a rental property or roommate that you would use in any other circumstance. LANL does not take responsibility for, or assist in, resolving any issues that may occur as a result of using these sites.
- [Los Alamos Intern Housing Self-Help](#)
- <https://www.apartments.com/los-alamos-nm/>
- <http://www.ladailypost.com/content/classifieds>
- <https://santafe.craigslist.org/search/hhh> – search for Los Alamos
- <http://ziarealtygroup.com/>
 - James Chrobocinski - (505) 695-3400 james@ziarealtygroup.com
 - Jeanette Metzger-Thorp - (505) 690-1199 jeanettemetzgerthorp@gmail.com
- <http://losalamoshouses.com/rentals/> - Pixie Koetter (505) 412-0344 info@losalamoshouses.com

Additional Housing Resources

- **Facebook Groups:**
 - [Rentals in Los Alamos & White Rock \(NM\)](#)
 - [Students @ LANL](#)
 - [Los Alamos Global Housing](#)
- **Los Alamos Apartment Complexes**
 - [Canyon Village Apartments](#)
 - [Ponderosa Pines Apartments](#)
 - [Casa De Luz](#)
 - [Chapel Apartments](#)
 - [Plateau Property Management](#)
 - Shannon Corporation Apartments – (505) 662-6000
 - Caballo Peak Apartments - (505) 661-9742
 - Mountain Vista Apartments - (505) 662-5417
- **Miscellaneous**
 - [Intern Housing](#)
 - [Virtual Los Alamos](#)
 - [VRBO](#)
 - [Airbnb](#)

Our mission: To solve national security challenges through simultaneous excellence

Our vision: To be trusted by our nation, emulated by our peers, and respected by the world

Our culture: *How* we do work is as important as *what* we do

Our values: service, integrity, teamwork, and excellence



LANL is in a culturally and environmentally rich location



Students & postdocs are crucial for our future workforce

- **Postdoc and student programs, summer schools, and universities are critical to our pipeline efforts and recruitment**
 - 7% of students converted to regular employees in FY21
 - Conversion rate for postdocs averages ~50%
- **We need the best and the brightest to continue our mission to protect our nation**
 - National labs offer good compensation packages and are competitive with high-profile companies



STUDENT STATS



LANL 2022

1812 students at peak in summer 2022

430 postdocs at LANL
The number ranges from 425–450 every year

35% employees who started as students/postdocs (regular and term)

50% average conversion rate for postdocs

Careers at LANL Video

Continue Your Career at LANL:

<https://www.youtube.com/watch?v=hml9ZOo6vKM>

Questions? Student Programs Office Staff

**Matthew Pacheco, mlpacheco@lanl.gov, or
Angelica Lopez, angelical@lanl.gov**