



Exceptional service in the national interest

High Security Operations

Summer Undergraduate Internship Program

Annie Goodman, FIE PS Student Intern (org 5118)

Aaron Armijo, FIE ASSM (org 5118)

Rebecca Lopez, FIE Manager (org 5118)



Sandia National Laboratories is a multimission laboratory managed and operated by National Technology and Engineering Solutions of Sandia LLC, a wholly owned subsidiary of Honeywell International Inc. for the U.S.

Sandia National Laboratories is a multimission laboratory managed and operated by National Technology and Engineering Solutions of Sandia, LLC, a wholly owned subsidiary of Honeywell International Inc., for the U.S. Department of Energy's National Nuclear Security Administration under contract DE-NA0003525.





MS Project Development & Scheduling



Project Management, Scheduling, and the Field Intelligence Element

- Identified need for Master Scheduling of all large projects
 - Relevant items for tracking included completed tasks, relevant dates, and duration metrics
- Trained on the Microsoft Project program
- Began identifying, locating, and recording dates for existing projects
 - Struggled with filing, procedures, and the Project design flaws
- Tentatively completed the original deliverable and began working towards other identified scheduling needs



Scheduling projects cont.

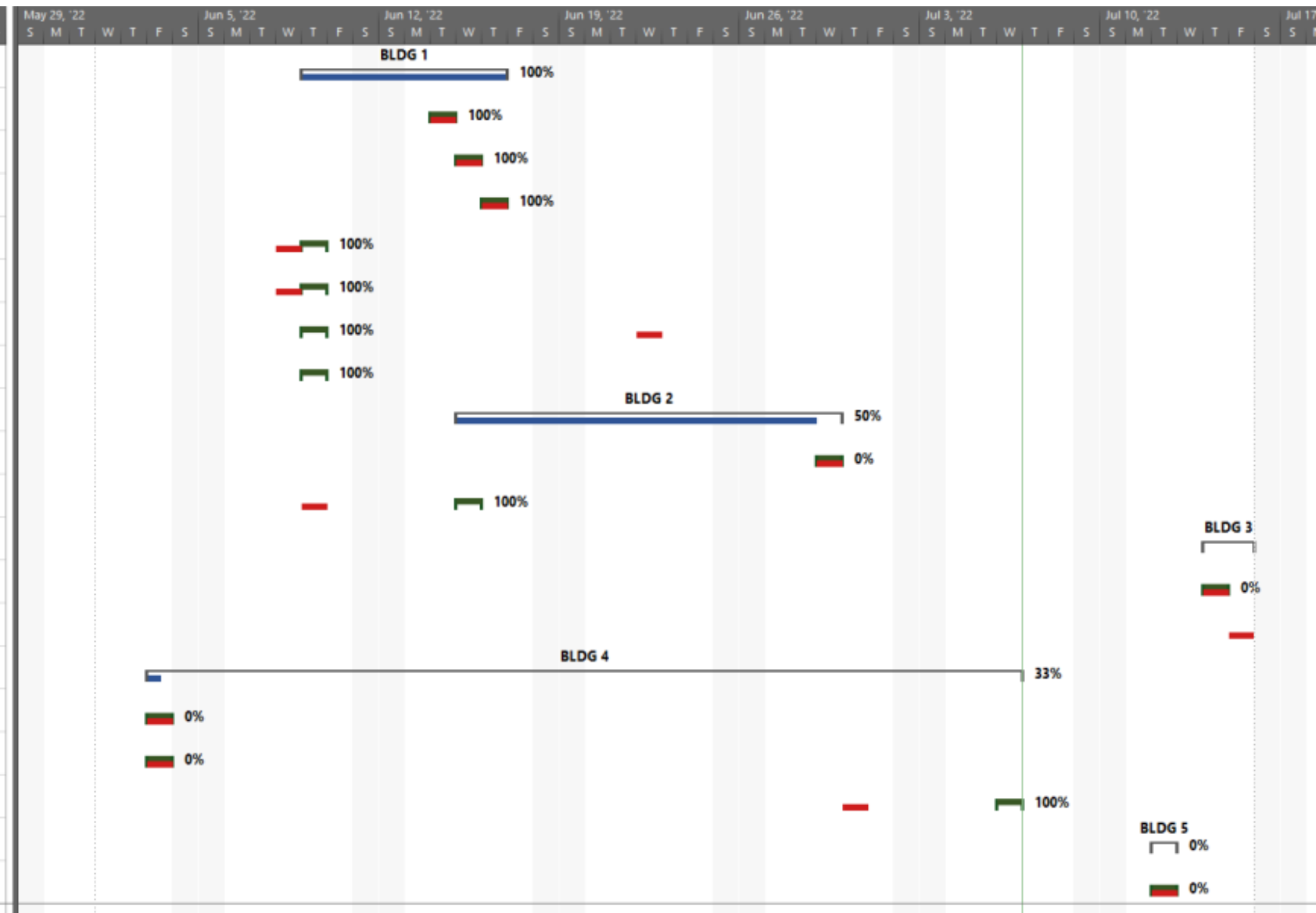
- Now developing logic based shells with columns for planned and adjusted dates, graphical depictions of task status, and color coding for submitting metric reports internally and to DOE oversight
- Working to implement that logic shell on a newly started project so we can grow and develop its capabilities to better support future projects
- Developed smaller MS Project based schedules to assist field technologists with meeting deadlines and supporting customers
- Began leading the weekly meetings, filing relevant documentation, and transitioned to maintenance of the master schedule



Task Name	Duration	Start	Finish	Predecessors	Resource Names	Pending Completion/Final Approval	Missing Info	DOE-IN Approval Needed
Project A	788 days	Thu 7/9/20	Mon 7/17/23			+		☹
Design Phase	521 days	Thu 7/9/20	Thu 7/7/22			+		☹
Charter Approved	0 days	Thu 7/9/20	Thu 7/9/20			◆		
CSP Submitted	0 days	Wed 3/2/22	Wed 3/2/22			◆		
CSP Approved	92 days	Wed 3/2/22	Thu 7/7/22	4	DOE-IN,pending	+		☹
30% Design Approved	0 days	Mon 6/21/21	Mon 6/21/21			◆		
60% Design Approved	0 days	Mon 8/9/21	Mon 8/9/21			◆		
90% Design Approved	0 days	Tue 11/16/21	Tue 11/16/21			◆		
100% IFC	0 days	Thu 12/23/21	Thu 12/23/21			◆		
Construction Phase	137 days	Thu 7/7/22	Sun 1/15/23			+		
Construction out for Bid	3 wks	Thu 7/7/22	Wed 7/27/22		pending	+		
Construction Award	0 days	Thu 7/28/22	Thu 7/28/22	11	pending,missing	+		
Construction Start Date	23 days	Thu 7/28/22	Mon 8/29/22	12	pending	+		
Period of Performance	137 days	Sat 7/9/22	Sun 1/15/23		pending	+		



Task Name	Duration	Baseline Start	Baseline Finish	Actual Start	Actual Finish
BLDG 1	6 days	Wed 6/8/22	Wed 6/22/22	Thu 6/9/22	Thu 6/16/22
ROOM A	1 day	Tue 6/14/22	Tue 6/14/22	Tue 6/14/22	Tue 6/14/22
ROOM B	1 day	Wed 6/15/22	Wed 6/15/22	Wed 6/15/22	Wed 6/15/22
ROOM C	1 day	Thu 6/16/22	Thu 6/16/22	Thu 6/16/22	Thu 6/16/22
ROOM D	1 day	Wed 6/8/22	Wed 6/8/22	Thu 6/9/22	Thu 6/9/22
ROOM E	1 day	Wed 6/8/22	Wed 6/8/22	Thu 6/9/22	Thu 6/9/22
ROOM F	1 day	Wed 6/22/22	Wed 6/22/22	Thu 6/9/22	Thu 6/9/22
ENTRYWAY	1 day	NA	NA	Thu 6/9/22	Thu 6/9/22
BLDG 2	11 days	Thu 6/9/22	Wed 6/29/22	Wed 6/15/22	NA
ROOM A	1 day	Wed 6/29/22	Wed 6/29/22	NA	NA
ROOM B	1 day	Thu 6/9/22	Thu 6/9/22	Wed 6/15/22	Wed 6/15/22
BLDG 3	2 days?	Thu 7/14/22	Fri 7/15/22	NA	NA
ROOM A	1 day?	Thu 7/14/22	Thu 7/14/22	NA	NA
PERIMETER	1 day?	Fri 7/15/22	Fri 7/15/22	NA	NA
BLDG 4	24 days	Fri 6/3/22	Thu 6/30/22	Fri 6/3/22	NA
BASEMENT	1 day	Fri 6/3/22	Fri 6/3/22	NA	NA
ROOM A	1 day	Fri 6/3/22	Fri 6/3/22	NA	NA
AUXILLARY BLDG	1 day	Thu 6/30/22	Thu 6/30/22	Wed 7/6/22	Wed 7/6/22
BLDG 5	1 day	Tue 7/12/22	Tue 7/12/22	NA	NA
PERIMETER	1 day	Tue 7/12/22	Tue 7/12/22	NA	NA





Field Work & Other Contributions



- Collecting and organizing minutes/agendas for DOE-IN
- Developing update lists to present at weekly High Risk Security Professional meetings
- Semi-daily visits to high security space construction facility for record keeping and updating
- Annotating documents for internal use and distribution
- Assisting with sound testing in the field



Door and Frame Schedule

Qty	Opng	Hand	Opng Width	Opng Height	Rating	Frame Information								Door Information										UC/ Hw Hdg	
						Constr	Series	Ga	Anchor	Depth	Type	Mat'l	Fin	Size	Series	Style	Core	Mat'l	Fin	Type	Edge	Thk			
1	SGL	RHR	3 - 0	7 - 0		FW		14		6 1/2	HMF B	G60	PRI	3 - 0		F	STC4 5	SS 16	PRI	HMD A	S	1 3/4	HDWS 01.1		
						Fr Note:								7-0	Dr Note: RF SHI ELDED										
6-1/2" door jambs																									

6-1/2" door jambs will not accommodate planned 6" stud with 3x 5/8" gyp board. Appropriate jambs would be 7-7/8th" minimum.

1	SGL	LHR	3 - 0	7 - 0		FW		14		6 1/2	board. Appropriate jamb would be 7-7/8th" minimum.		F	STC4 5	SS 16	PRI	HMD A	S	1 3/4	HDWS 01.1
						Fr Note:						Dr Note: RF SHI ELDED								

See seq 23 details A & C

1	SGL	LHR	3 - 0	7 - 0		FW		14		6 1/2	HMF B	G60	PRI	3 - 0		F	STC4 5	SS 16	PRI	HMD A	S	13/4	HDWS 01.1
						Fr Note:								7-0	Dr Note: RF SHI ELDED								



Concern regarding framing around this piping RE sound testing (not enough layers of gyp around this piece)

06 22 2022

RFI going in to raise & shorten this fire protection plumbing to raise it above the plywood deck

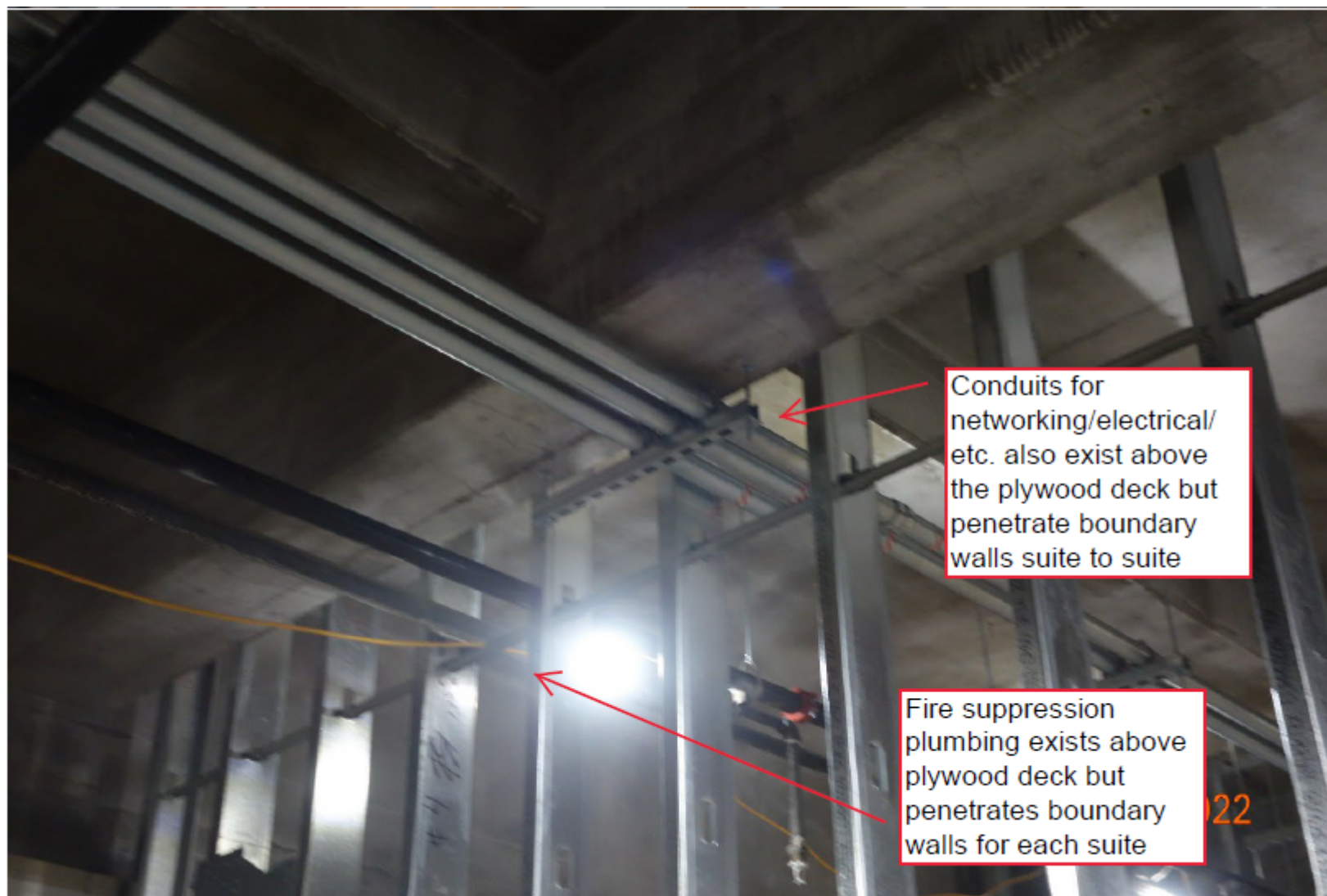
06 22 2022

Additional view of electrical and network conduits penetrating walls between [redacted] spaces (all will exist above decking).

06 22 2022

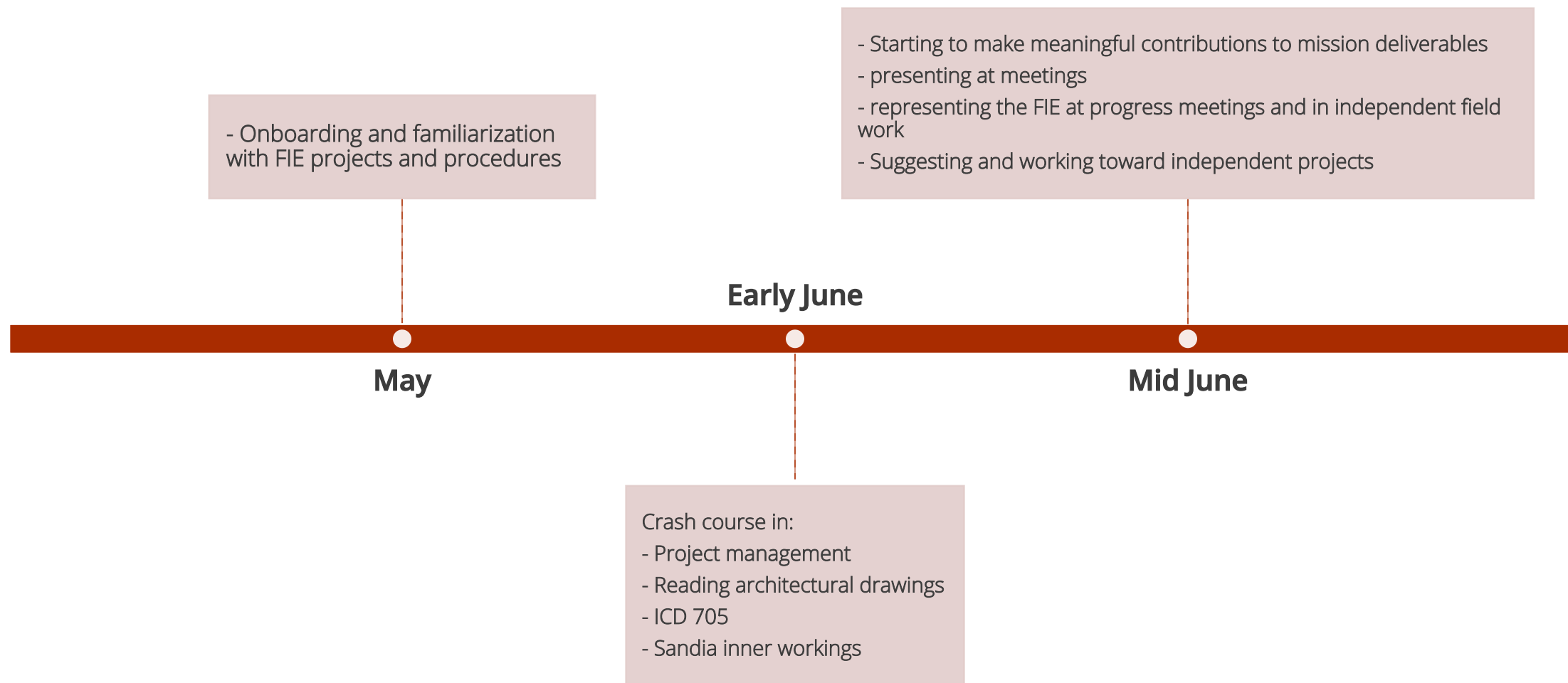
Same issue with too few gyp boards around this penetration, concerns because this is the VTC conference room and must be STC 50



06 22 2022





Internship Timeline & Learning Curve



- 
- 
- Leading progress meetings
 - Independently developing and implementing solutions
 - Generating deliverables for peer review
 - Completing delegated tasks with minimal supervision or direction

Late June -
Present

Transition to Year-Round

- Taking on additional responsibilities for meetings and maintenance of records
- Completing additional training to further contribute to deliverables
- Learning about, and contributing to, the overall FIE mission as well as the larger missions of the Labs