

# LA-UR-23-26813

Approved for public release; distribution is unlimited.

**Title:** Student Programs Office Overview

**Author(s):** Holtzclaw-Stone, Heather Nicole

**Intended for:** Presentation to TAMU administrator

**Issued:** 2023-06-23



Los Alamos National Laboratory, an affirmative action/equal opportunity employer, is operated by Triad National Security, LLC for the National Nuclear Security Administration of U.S. Department of Energy under contract 89233218CNA000001. By approving this article, the publisher recognizes that the U.S. Government retains nonexclusive, royalty-free license to publish or reproduce the published form of this contribution, or to allow others to do so, for U.S. Government purposes. Los Alamos National Laboratory requests that the publisher identify this article as work performed under the auspices of the U.S. Department of Energy. Los Alamos National Laboratory strongly supports academic freedom and a researcher's right to publish; as an institution, however, the Laboratory does not endorse the viewpoint of a publication or guarantee its technical correctness.

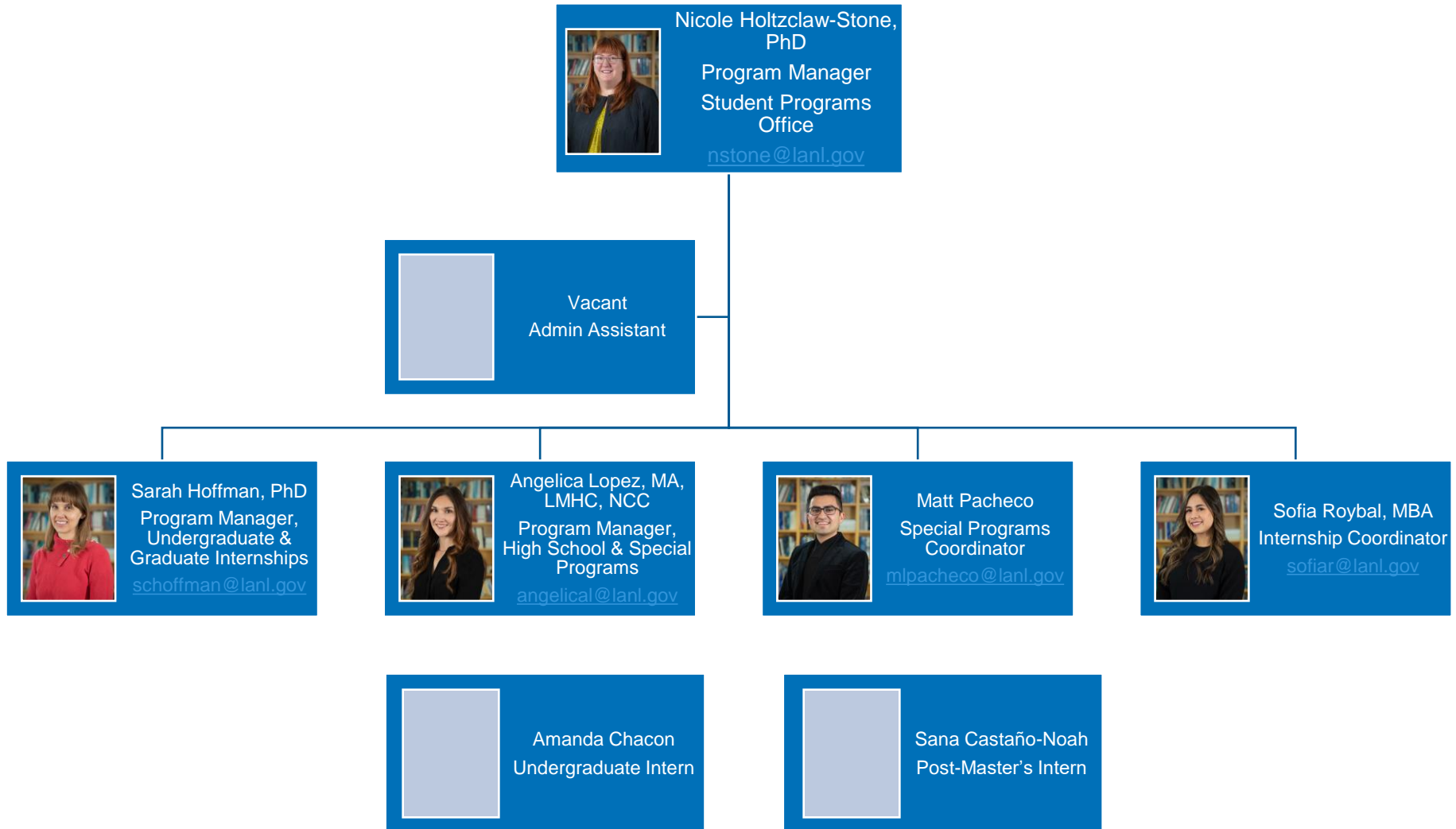


# Student Programs Office Overview

Nicole Holtzclaw-Stone, PhD  
Student Programs Office

June 28, 2023

# Student Programs Office: Who are we?



# Student Programs

- Further the Laboratory's goal of developing and mentoring the next generation of scientific, technical, and professional staff by supporting:
  - 2,000+ interns at all levels (high school, undergraduate, graduate, and postgraduate)
  - 2,000+ mentors, 70 division student liaisons
- Our activities:
  - Internship promotion and external engagement
  - Intern identification and sourcing
  - Training and orientation
  - Professional and career development
  - Social and community engagement
  - Compliance

# Internship Appointments

LANL interns onboard under one of the following appointment types:

## Student Intern

- HS, UGS, Post-BS, GRA, Post-MS appointments
- Compensated based on institutional [Student Salary Structure](#)
- Casual, part-time, or full-time appointments
- Eligible for travel reimbursement and some benefits

## Student Guest

- Official Student Guest or Fellowship Student Guest
- Utilize LANL resources to meet academic requirements
- Eligible for travel reimbursement
- May receive compensation if participating in externally-administered educational program

# Internship Types

## Technical/Scientific

- Most areas in STEM (biological sciences, computational sciences, engineering, mathematical sciences, physical sciences)
- Experimental, computational, or theoretical
- Research or applied

## Professional/Administrative

- Program/project management
- Finance/accounting
- Human resources
- Operations
- Capital Projects

# Undergraduate (UGS) & Graduate (GRA) Internships

- UGS Eligibility:
  - Acceptance into an accredited undergraduate program
  - Enroll in and successfully complete a full course load (e.g., 12 credit hours per semester)
  - 3.0 Cumulative GPA on a 4.0 scale (or equivalent)
  - Pass a new employment drug test
- GRA Eligibility:
  - Acceptance into an accredited graduate program
  - Full-time status (6 credit hours per semester, or equivalent)
  - 3.2 Cumulative GPA on a 4.0 scale, or equivalent
  - Pass a new employment drug test





# Post-Baccalaureate & Post-Master's Internships

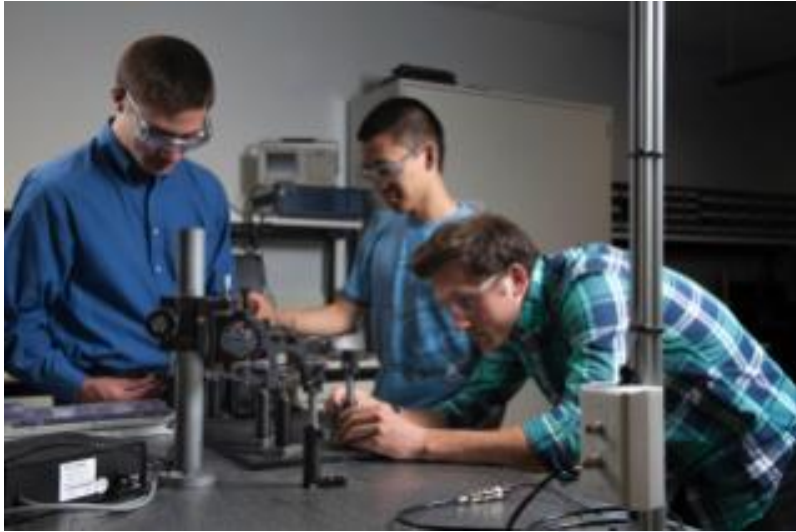
- Post-bac Eligibility:
  - Awarded a bachelor's degree within the last three years
  - 3.0 Cumulative GPA on a 4.0 scale (or equivalent)
  - Not yet accepted into an accredited graduate program
  - Pass new employment drug test
- Post-Master's Eligibility:
  - Awarded a master's degree within the last three years
  - 3.2 Cumulative master's GPA on a 4.0 scale (or equivalent)
  - Not yet accepted into a second master's program or a doctoral program
  - Pass a new employment drug test
- Time limit:
  - Two years
    - use this time to gain relevant work experience, prepare job applications, and/or apply for a doctoral or second master's program



# Special Internship and Fellowship Programs

- Externally-funded internship and fellowship programs administered by Department of Energy (DOE), the National Nuclear Security Administration (NNSA), National Science Foundation (NSF), and various educational consortia
- Support diversity advancement across DOE complex of national laboratories
- Summer and year-round internship and fellowship opportunities
- Graduate and research fellowships for students at undergraduate and graduate level
- Each program has distinct eligibility requirements, application processes, deliverables, and funding
- Students receive full funding from external administrator and onboard as Student Guests or Student Employees

# 2022: Successful Hybrid Summer



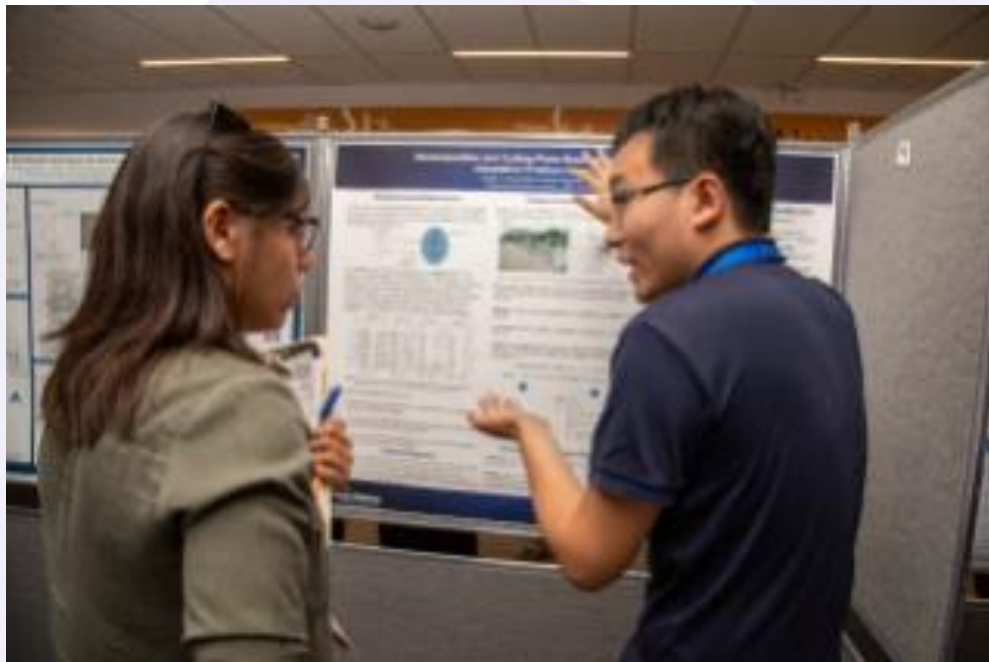
LANL student interns working in their lab.

- Approximately **1,812** summer student interns in 2022
- **35.7%** were returning student interns
- **70.9%** of interns worked on-site or hybrid in 2022
- **55** students from Texas A&M University

# Student Symposium – August 2022

Approximately **185** student interns participated in the 2022 Student Symposium

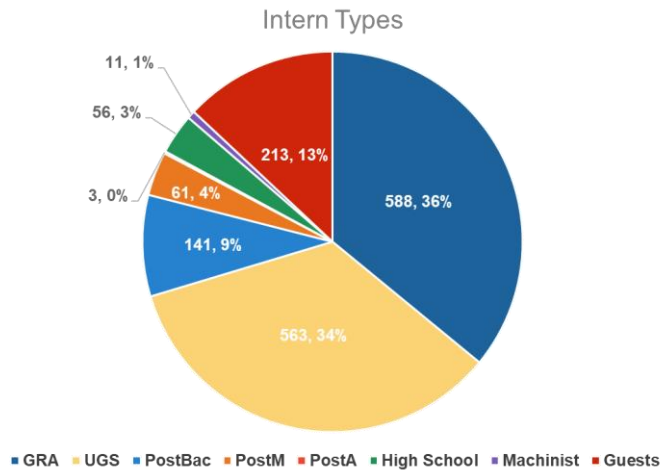
Interns, mentors, and judges enjoyed an afternoon of poster presentations



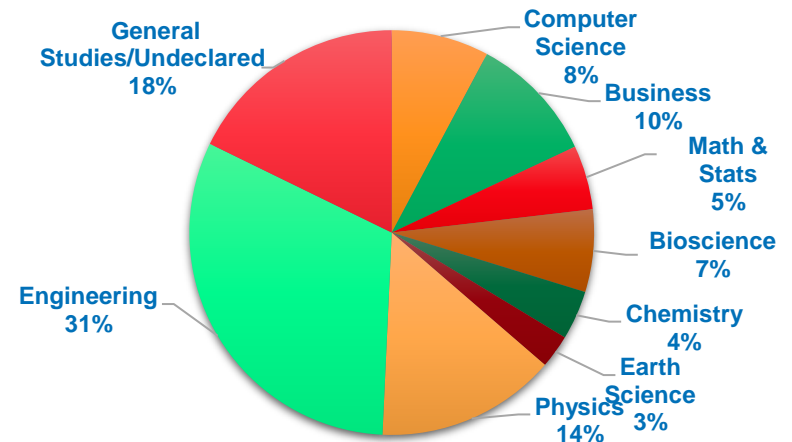
A student explains their poster to a guest.

# Students are used as a staff pipeline for all LANL organizations

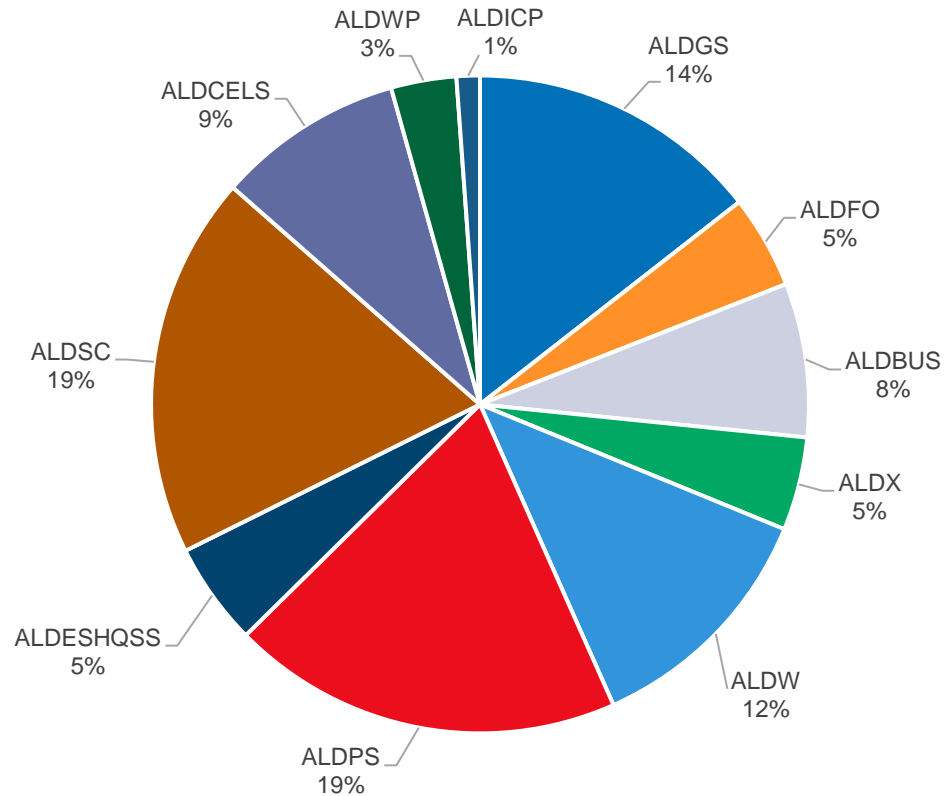
- The majority of LANL students are in four-year or graduate degree programs
- 70% are in a declared technical degree program
- ~550 year-round students (mostly UGS & GRA)



## Student Majors



# 2022 Student Hires by ALD





# Special Internship Programs

[DOE Office of Energy Efficiency and Renewable Energy Advanced Manufacturing Office Summer Internships](#)

[DOE Office of Environmental Management Minority Serving Institutions Partnership Program](#)

[DOE Office of Science Office of Workforce Development for Teachers and Scientists Science Undergraduate Laboratory Internships Program](#)

[Mentorship for Environmental Scholars Program](#)

[NNSA Minority Serving Institution Partnership Program](#)

[NNSA Minority Serving Institutions Internship Program](#)

[NSF Mathematical Sciences Graduate Internship Program](#)

# Fellowship Programs

[DOE Computational Science Graduate Fellowship](#)

[DOE Office of Environmental Management Graduate Fellowship Program](#)

[DOE Office of Fossil Energy and Carbon Management Mickey Leland Energy Fellowship Program](#)

[DOE Office of Science Graduate Student Research Program](#)

[Graduate Fellowships for STEM Diversity](#)

[National GEM Consortium Fellowship Program](#)



# Questions?

**Student Programs Office Staff**

[studentprograms@lanl.gov](mailto:studentprograms@lanl.gov)

**Nicole Holtzclaw-Stone, Ph.D.**

[nstone@lanl.gov](mailto:nstone@lanl.gov)