

LA-UR-22-31500

Approved for public release; distribution is unlimited.

Title: X-ray CT images of the LOKI-PDMS impact tests

Author(s): Patterson, Brian M.
Gladysz, Gary Michael

Intended for: communicate results from X-ray CT analysis to a university collaborator

Issued: 2022-10-30



Los Alamos National Laboratory, an affirmative action/equal opportunity employer, is operated by Triad National Security, LLC for the National Nuclear Security Administration of U.S. Department of Energy under contract 89233218CNA000001. By approving this article, the publisher recognizes that the U.S. Government retains nonexclusive, royalty-free license to publish or reproduce the published form of this contribution, or to allow others to do so, for U.S. Government purposes. Los Alamos National Laboratory requests that the publisher identify this article as work performed under the auspices of the U.S. Department of Energy. Los Alamos National Laboratory strongly supports academic freedom and a researcher's right to publish; as an institution, however, the Laboratory does not endorse the viewpoint of a publication or guarantee its technical correctness.

X-ray CT images of the LOKI-PDMS impact tests

Brian M. Patterson, Gary Gladysz

October 2022

CT Imaging

- Imaged using a Carl Zeiss X-ray Microscopy Inc. Xradia 520 Versa
- Flat panel detector
- 80 kVp, 7W, 1 s dwell (0.05 s, n=20), 4501 radiographs
- 10.43 micrometer voxels

- Samples were trimmed to a hexagon to limit imaging artifacts.

Test Series J-3: PDMS Optical Photographs

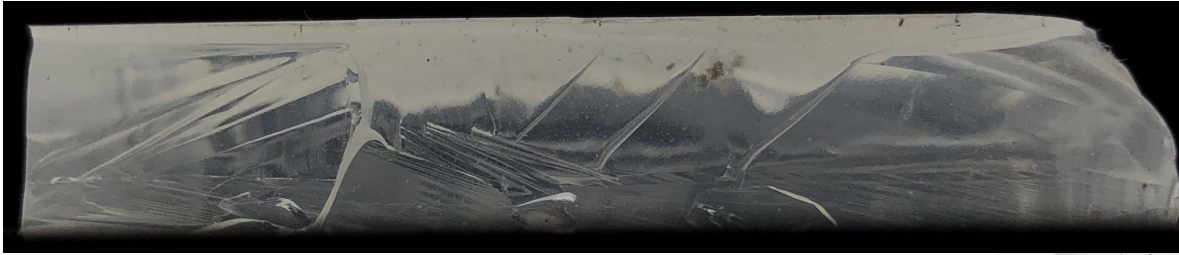
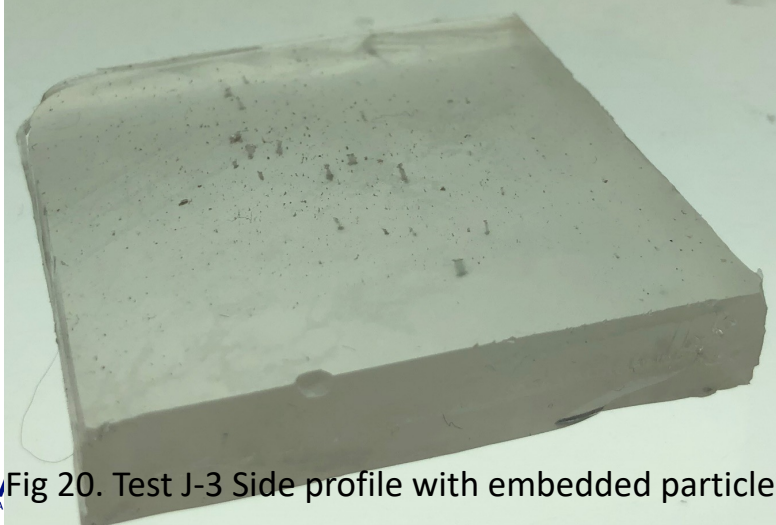



Fig 19. Test J-3 Side profile with embedded particles



 Fig 20. Test J-3 Side profile with embedded particles

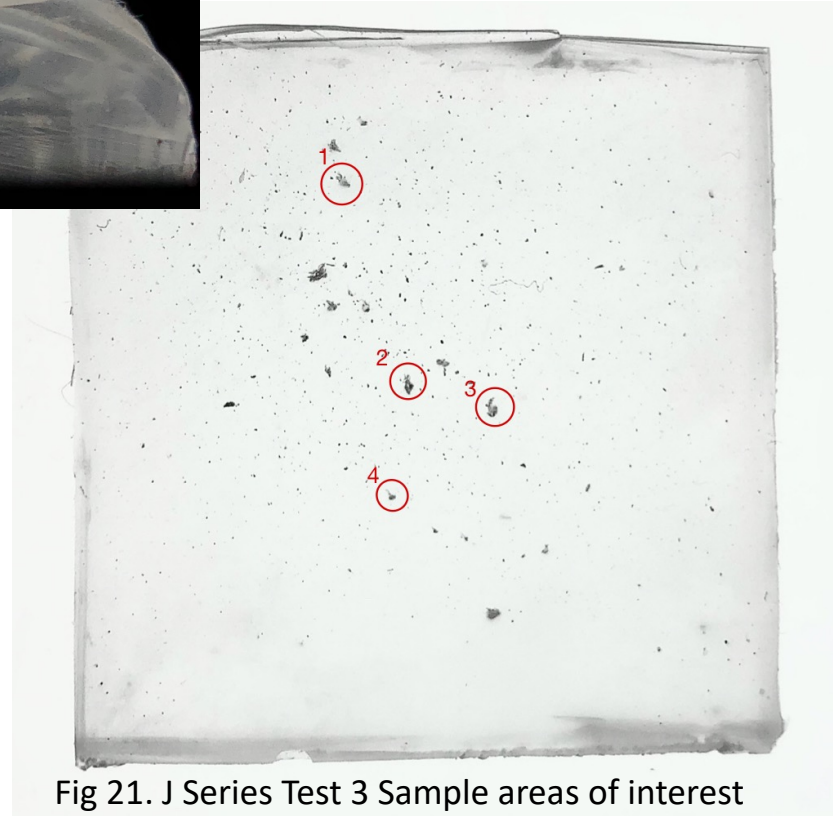
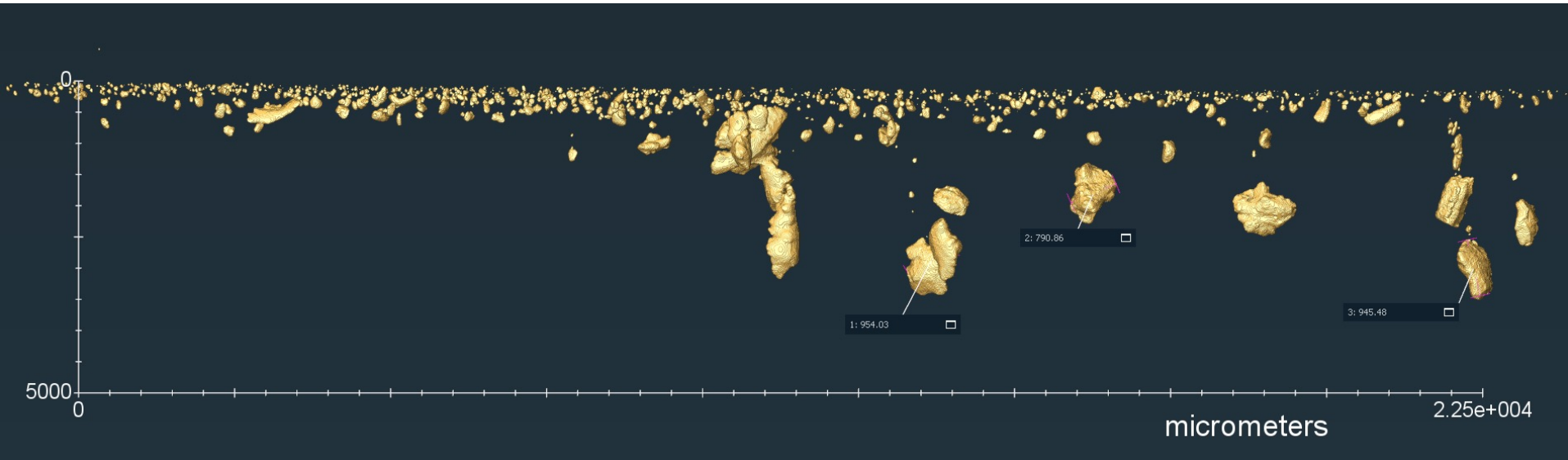


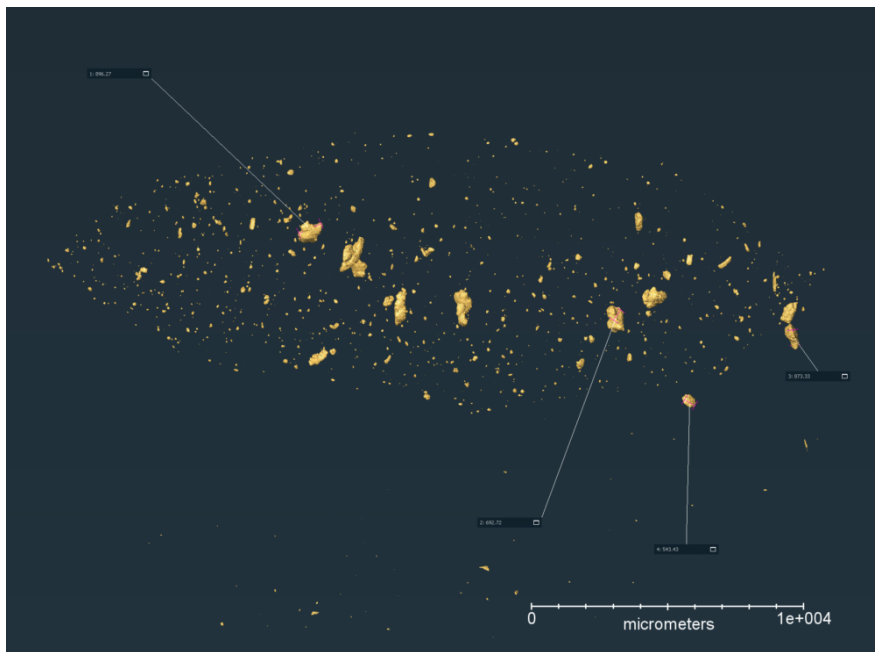
Fig 21. J Series Test 3 Sample areas of interest

Surface rendering of the J-3 embedded particles

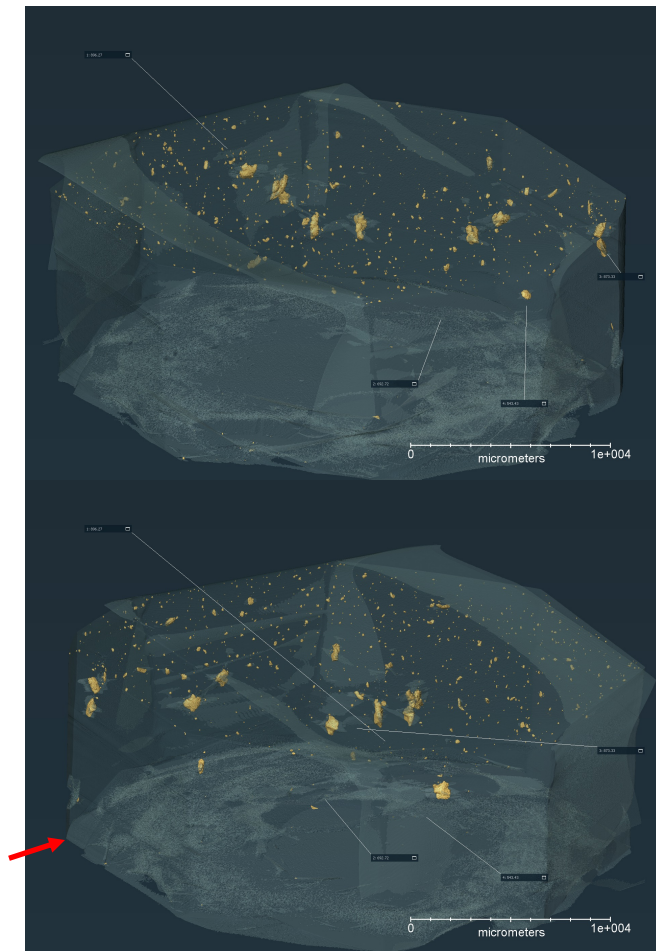


Side orientation looking from the bottom side of the optical image. No parallax. Particles 1-3 are labeled.

Test Series J-3 volume rendering and movie



NB: This is not the entire thickness of the sample;
the bottom was cropped.



Test R-1.5: PDMS Optical Photographs

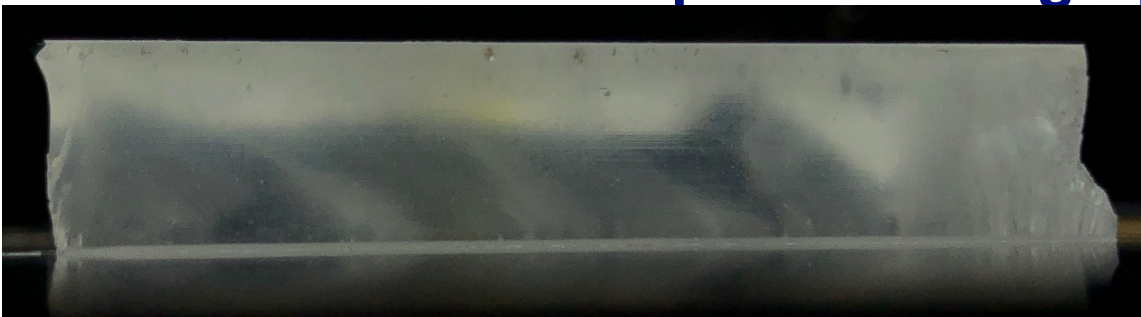


Fig 1. Test R-1.5 Side profile with embedded particles

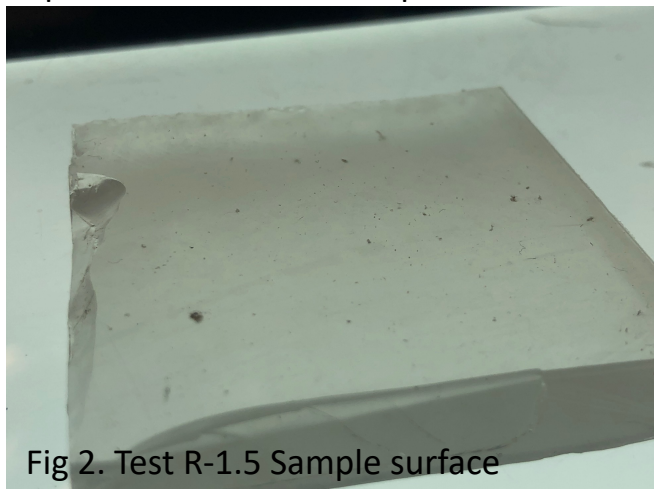


Fig 2. Test R-1.5 Sample surface

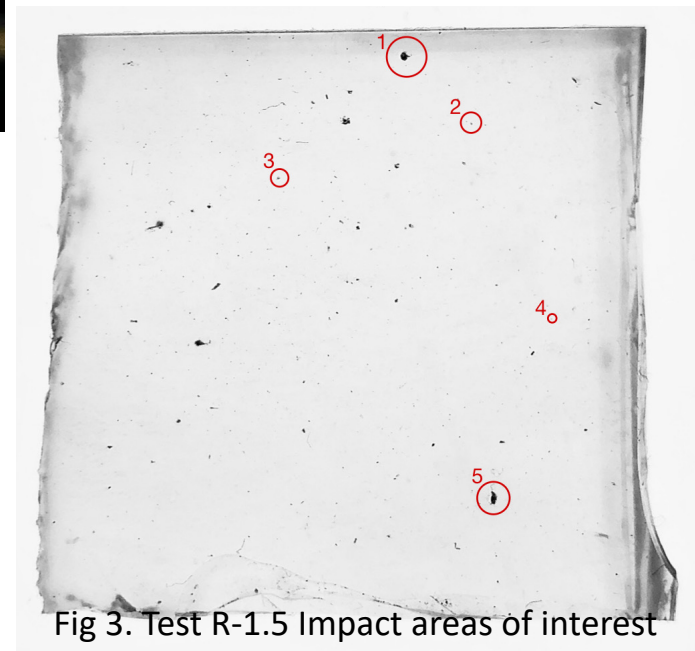
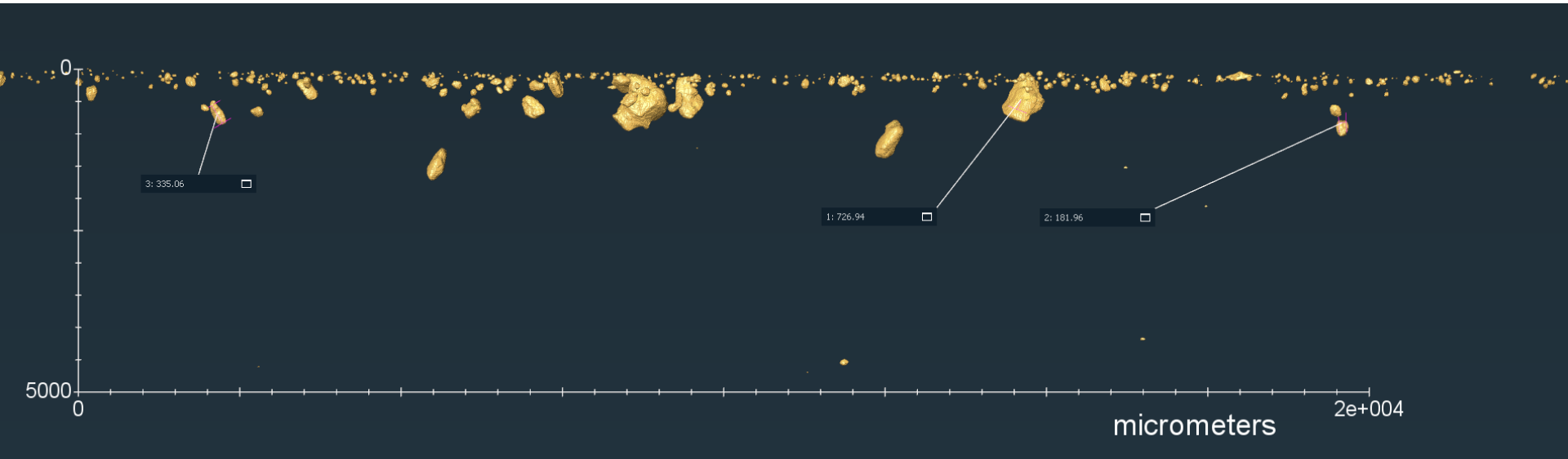


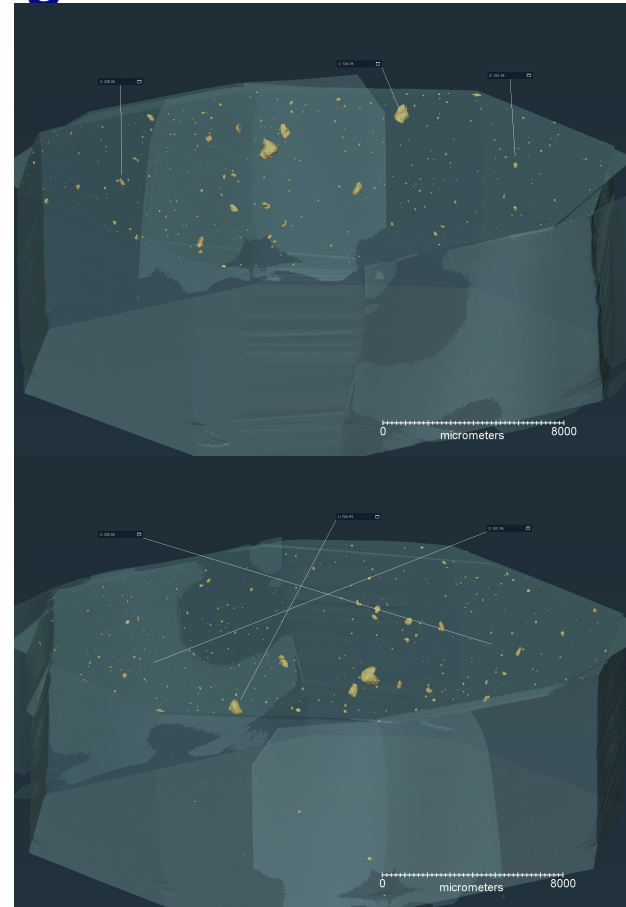
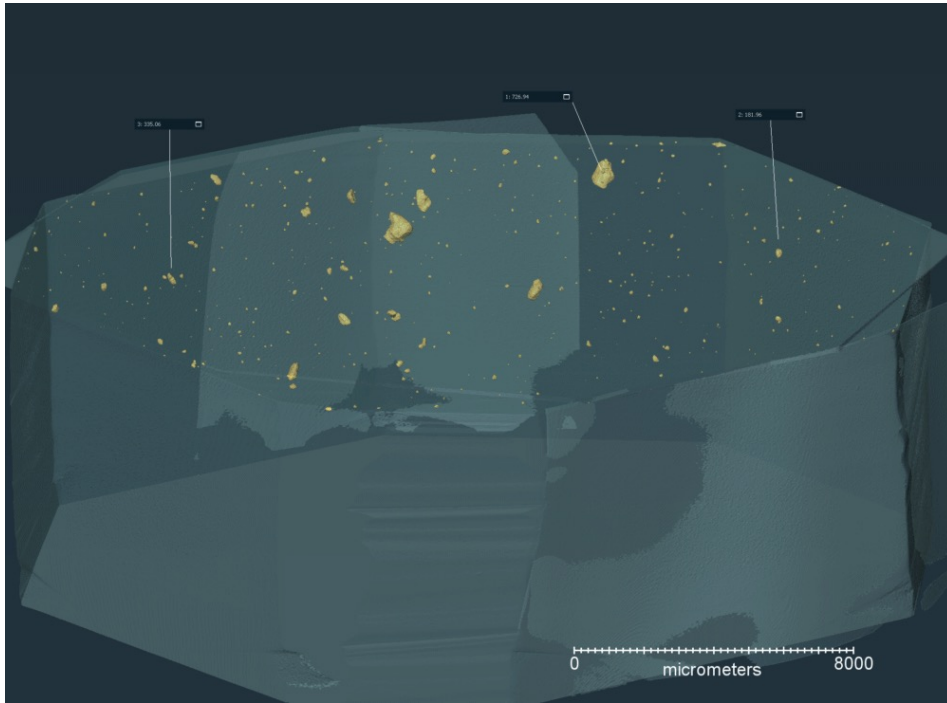
Fig 3. Test R-1.5 Impact areas of interest

Surface rendering of the R-1.5 embedded particles



Side orientation looking from the bottom side of the optical image. No parallax. Particles 1-3 are labeled.

Test Series R-1.5 volume rendering and movie



Quick results

- J-3 has larger particles, embedded further into the PDMS.