

# Characterization and borehole analysis of the Ghareb Formation for nuclear waste disposal in Israel

- Ghareb Formation
- ~120 m thick
- Chalk, marl, and oil shales, kerogen
- High porosity- 20-45%
- Depth of ~500 m

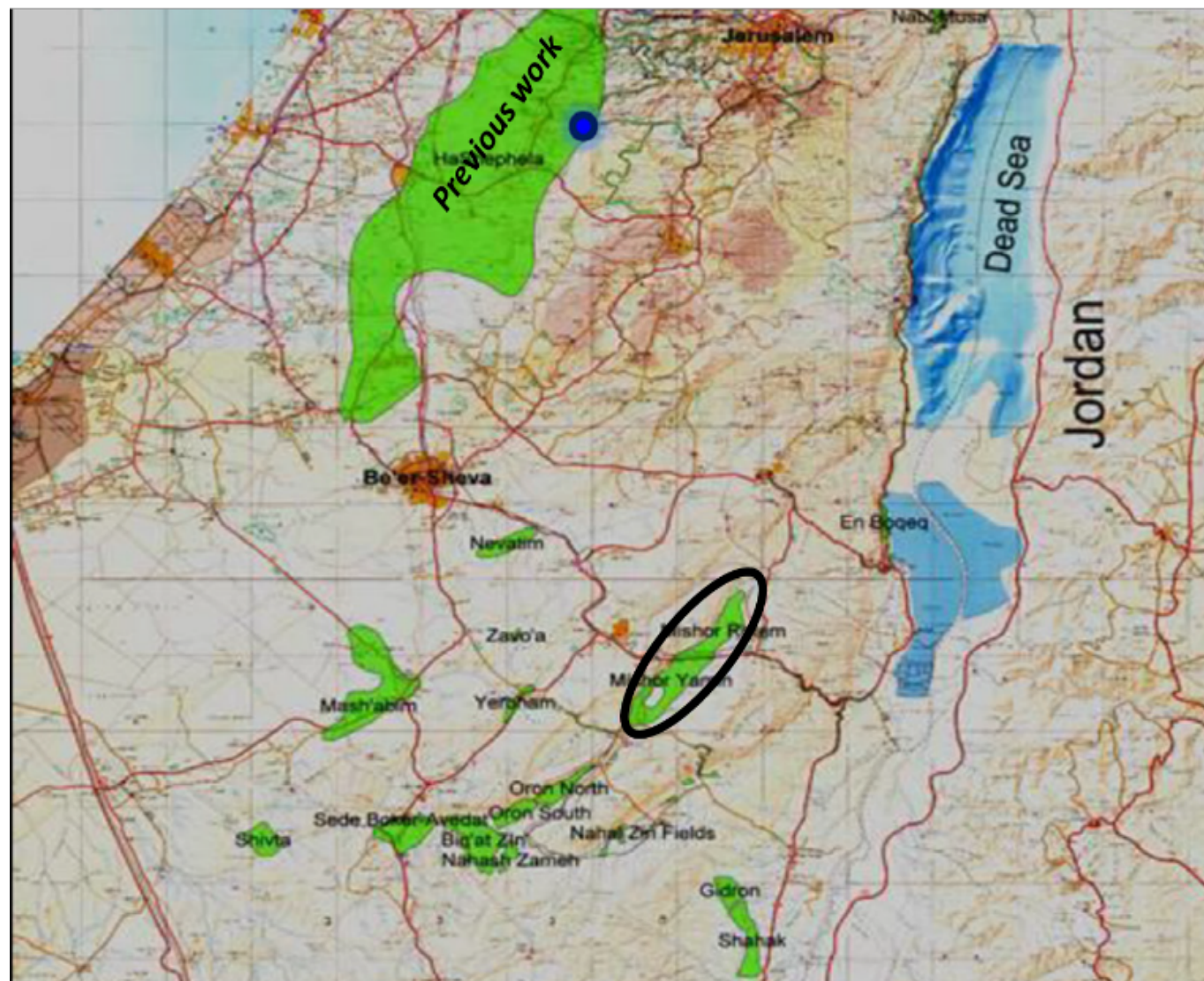
S Bauer, C. Choens, and W. Kibikas<sup>1</sup>

Sandia National Laboratories, Albuquerque, NM, USA

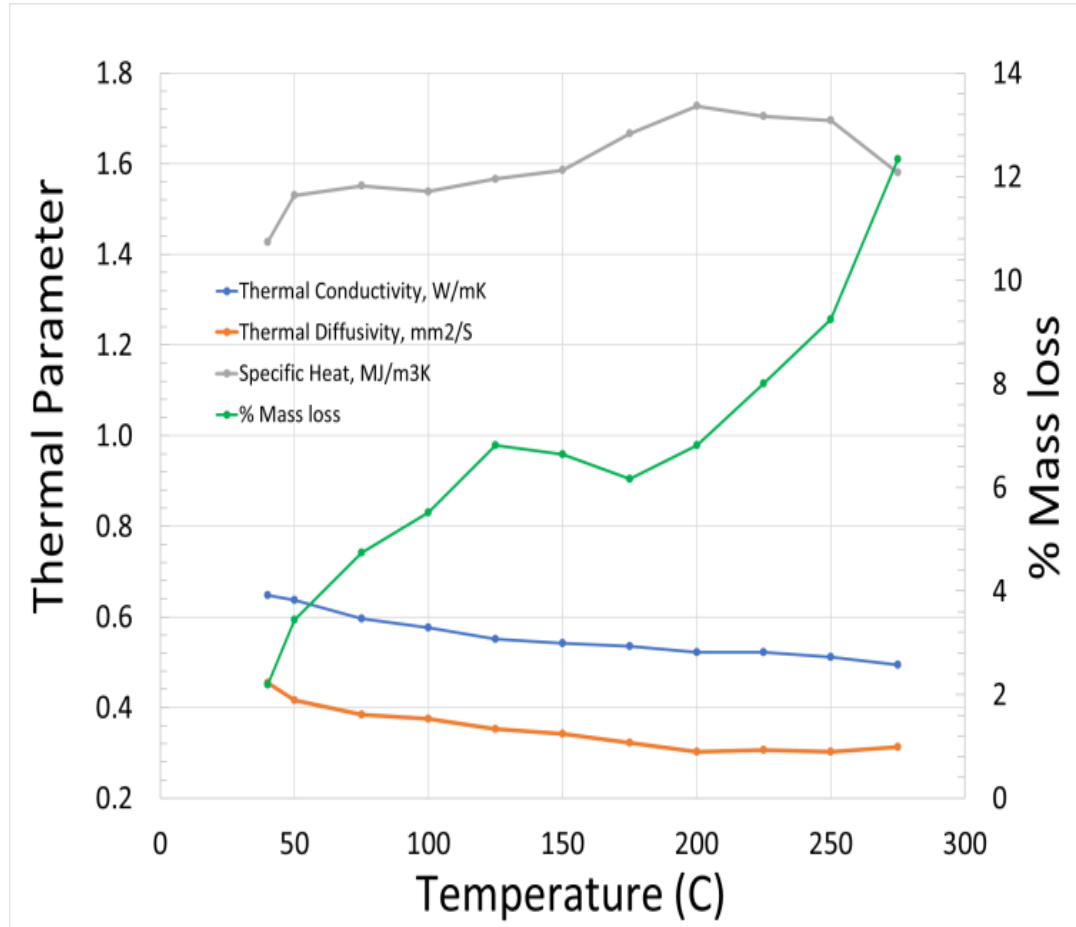
E. Shalev and V. Lyakhovsky

Geological Survey Israel, Jerusalem, Israel

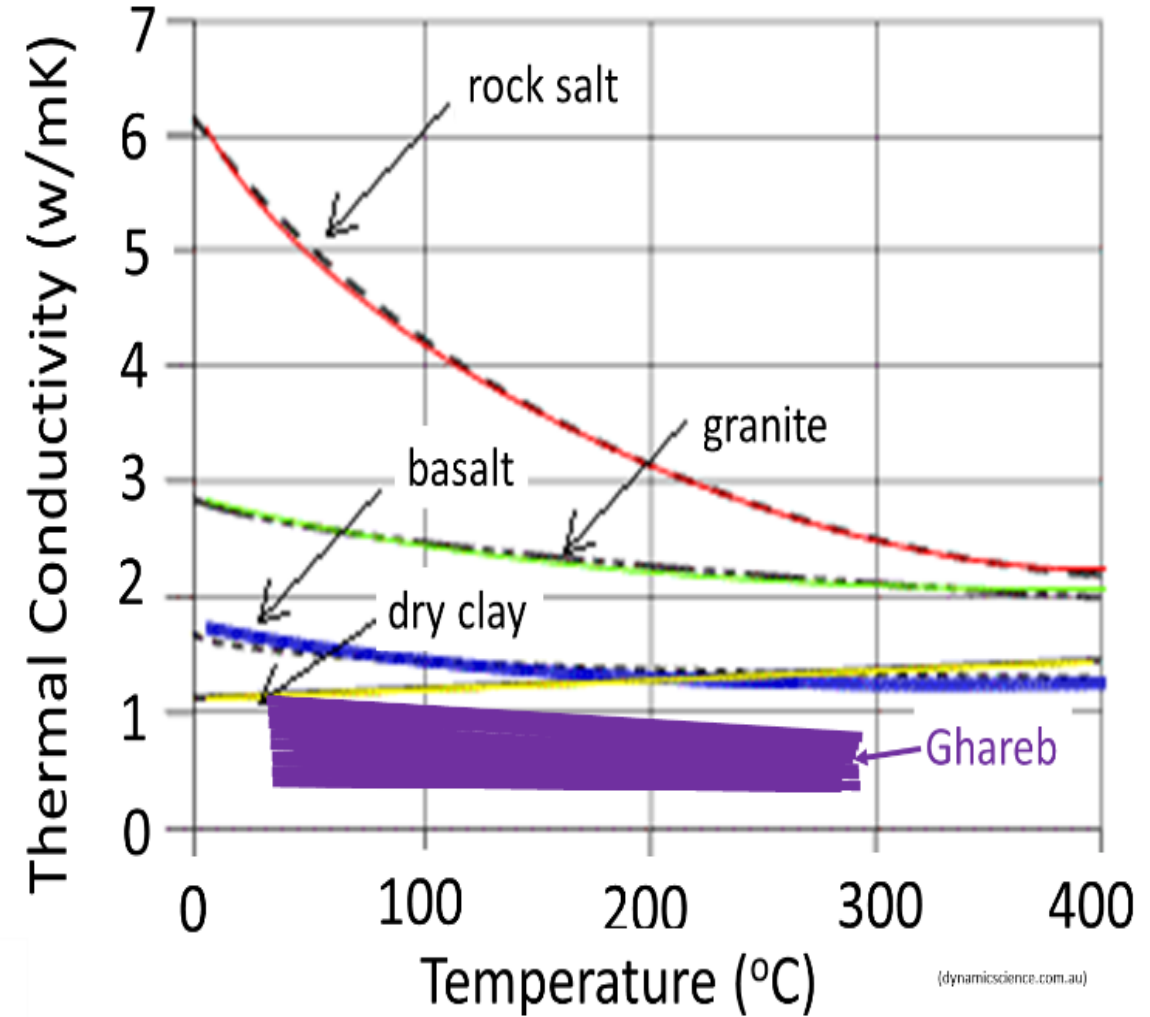
<sup>1</sup>University of Oklahoma

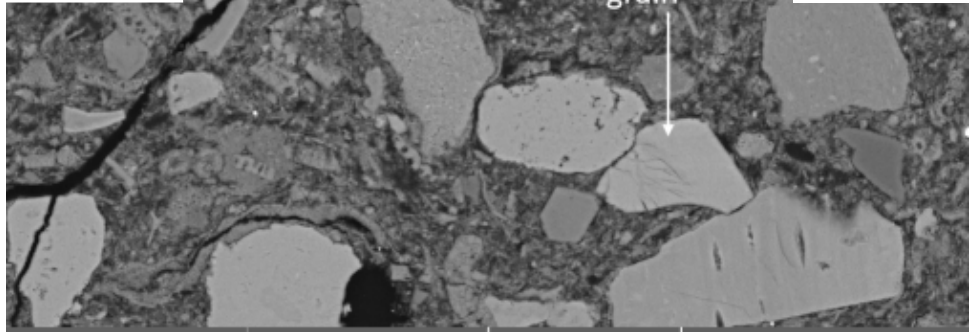
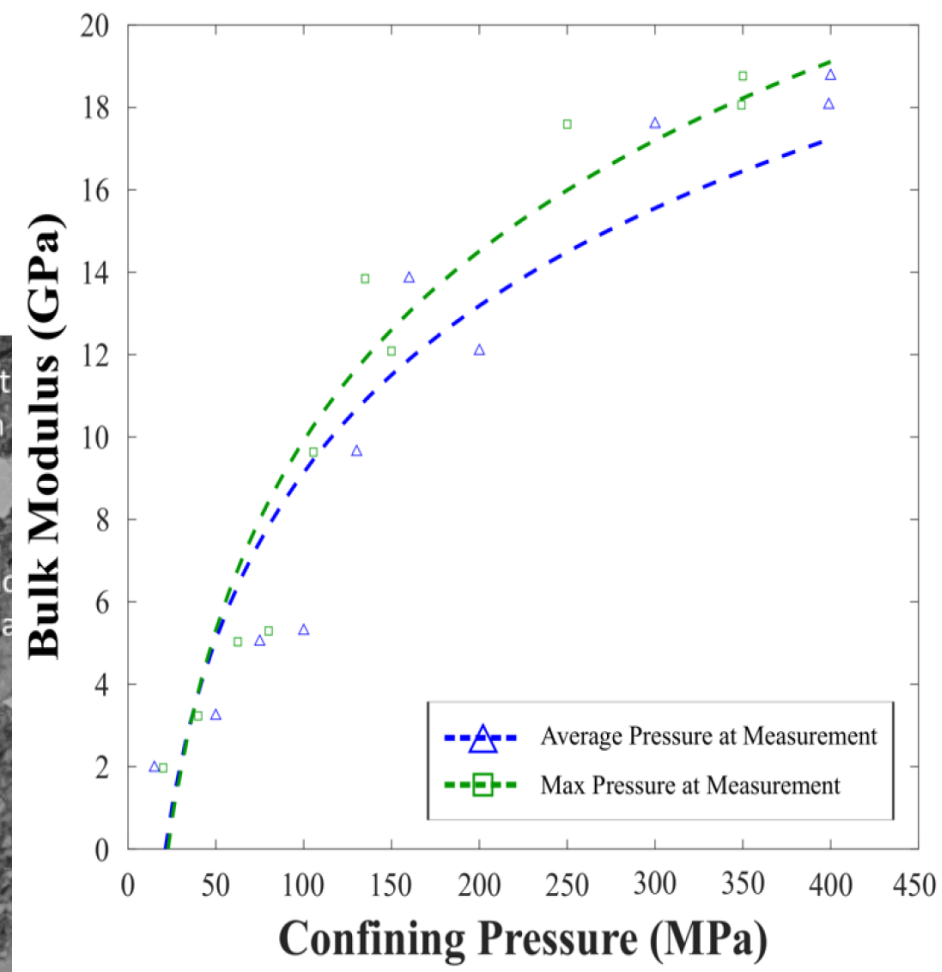
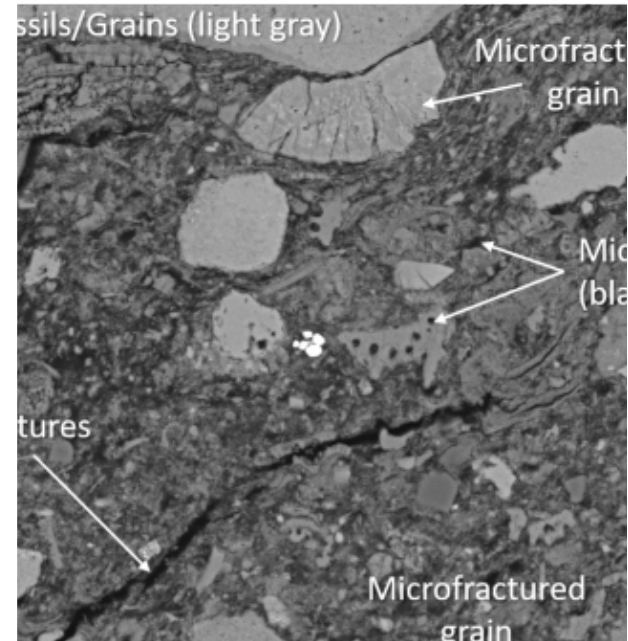
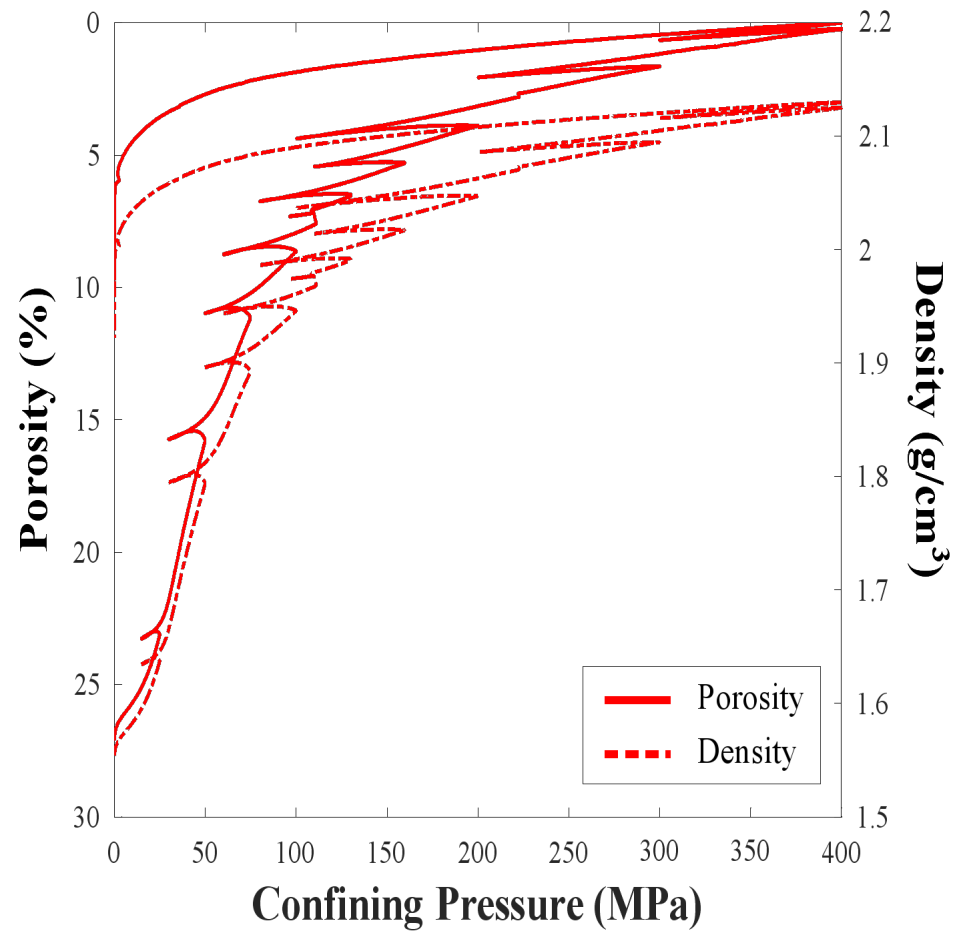


# Mass loss upon heating



# Thermal conductivity comparison with other rocks





SEM HV: 30.0 kV	WD: 14.92 mm	100 μm	VEGA3 TESCAN
View field: 500 μm	Det: BSE		
SEM MAG: 554 x	Date(m/d/y): 04/20/21		

Sandia National Laboratories is a multimission laboratory managed and operated by National Technology and Engineering Solutions of Sandia, LLC, a wholly owned subsidiary of Honeywell International, Inc., for the U.S. Department of Energy's National Nuclear Security Administration under contract DE-NA-0003525. This presentation describes objective technical results and analysis. Any subjective views or opinions that might be expressed in the paper do not necessarily represent the views of the U.S. Department of Energy or the United States Government.