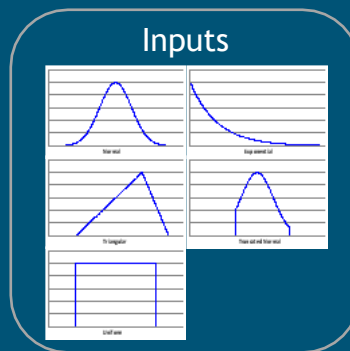
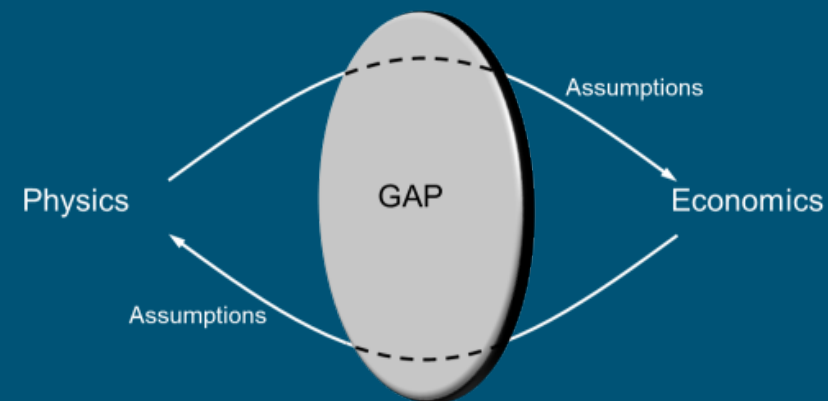
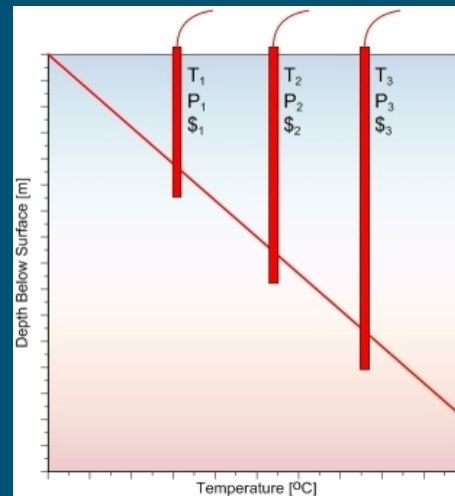
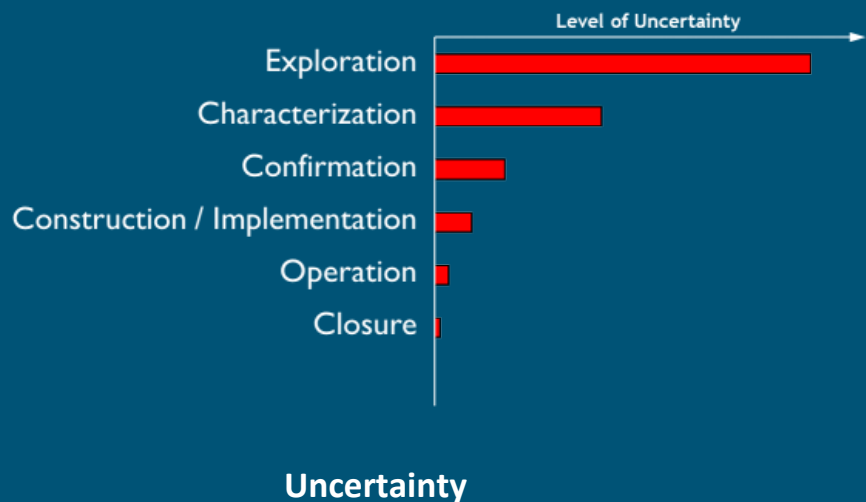
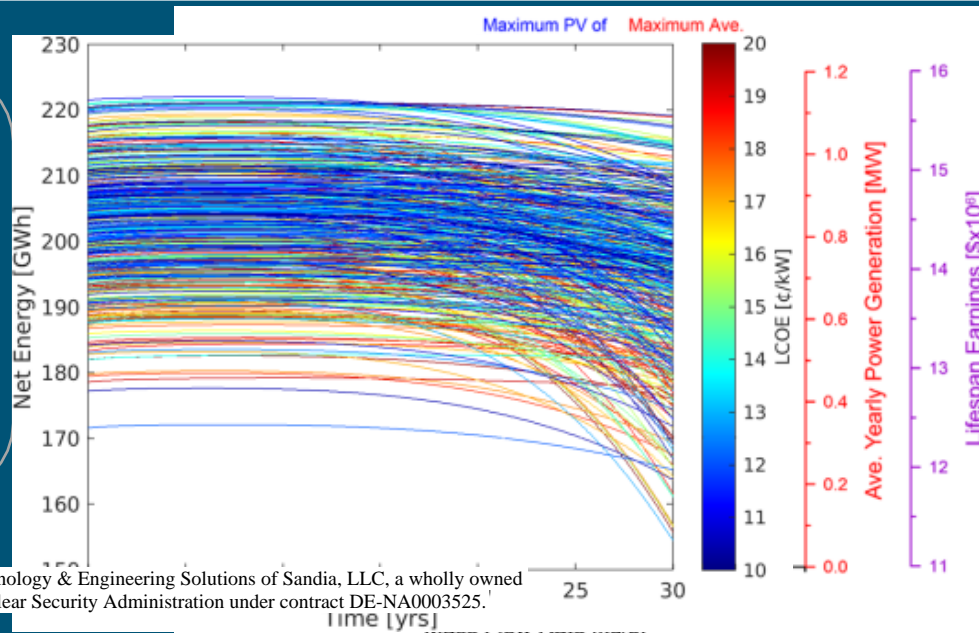
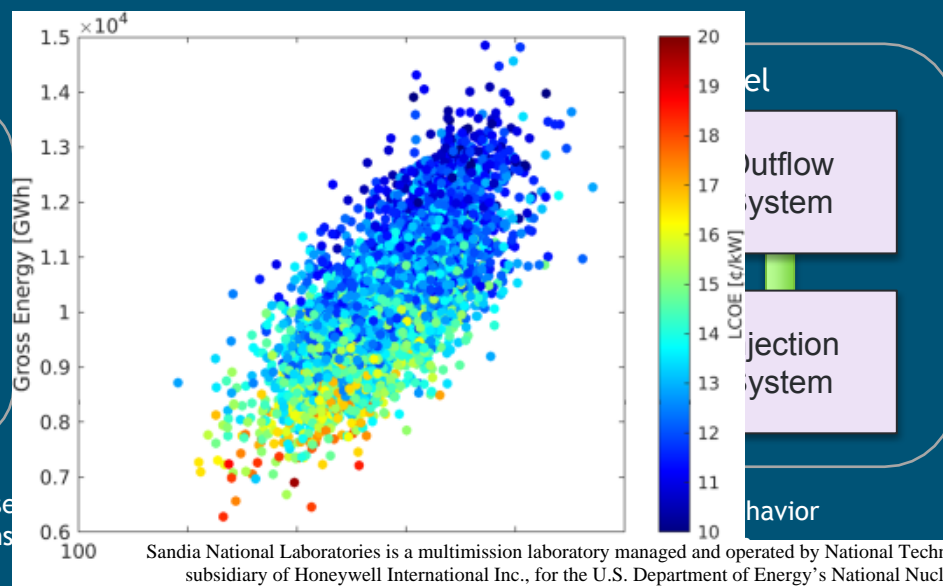


# GT-Mod: A Techno-Economic Model for Geothermal Resource Evaluation

SAND2021-6281PE



Input uncertainties are expressed as probability density functions



Sandia National Laboratories is a multimission laboratory managed and operated by National Technology & Engineering Solutions of Sandia, LLC, a wholly owned subsidiary of Honeywell International Inc., for the U.S. Department of Energy's National Nuclear Security Administration under contract DE-NA0003525.