

Prioritization of Cross-Cutting Research & Development Activities: Unsaturated Alluvium Reference Case, Disposal of Dual Purpose Canisters, and Geologic Disposal Safety Assessment

U.S. Nuclear Waste Technical Review Board
Fact-Finding Meeting
November 4 and 5, 2020
Online Virtual Meeting

Emily Stein, PhD
Manager, Applied Systems Analysis and Research
Sandia National Laboratories

SAND2020-xxxx PE

Disclaimer & Legal Notice

Disclaimer

This is a technical presentation that does not take into account contractual limitations or obligations under the Standard Contract for Disposal of Spent Nuclear Fuel and/or High-Level Radioactive Waste (Standard Contract) (10 CFR Part 961). For example, under the provisions of the Standard Contract, spent nuclear fuel in multi-assembly canisters is not an acceptable waste form, absent a mutually agreed to contract amendment.

To the extent discussions or recommendations in this presentation conflict with the provisions of the Standard Contract, the Standard Contract governs the obligations of the parties, and this presentation in no manner supersedes, overrides, or amends the Standard Contract.

This presentation reflects technical work which could support future decision making by DOE. No inferences should be drawn from this presentation regarding future actions by DOE, which are limited both by the terms of the Standard Contract and Congressional appropriations for the Department to fulfill its obligations under the Nuclear Waste Policy Act including licensing and construction of a spent nuclear fuel repository.

Legal Notice

This report was prepared as an account of work sponsored by an agency of the United States Government. Neither the United States Government, nor any agency thereof, nor any of their employees, nor any of their contractors, subcontractors, or their employees, make any warranty, express or implied, or assume any legal liability or responsibility for the accuracy, completeness, or usefulness of any information, apparatus, product, or process disclosed, or represent that its use would not infringe privately owned rights. Reference herein to any specific commercial product, process, or service by trade name, trademark, manufacturer, or otherwise, does not necessarily constitute or imply its endorsement, recommendation, or favoring by the United States Government, any agency thereof, or any of their contractors or subcontractors. The views and opinions expressed herein do not necessarily state or reflect those of the United States Government, any agency thereof, or any of their contractors.

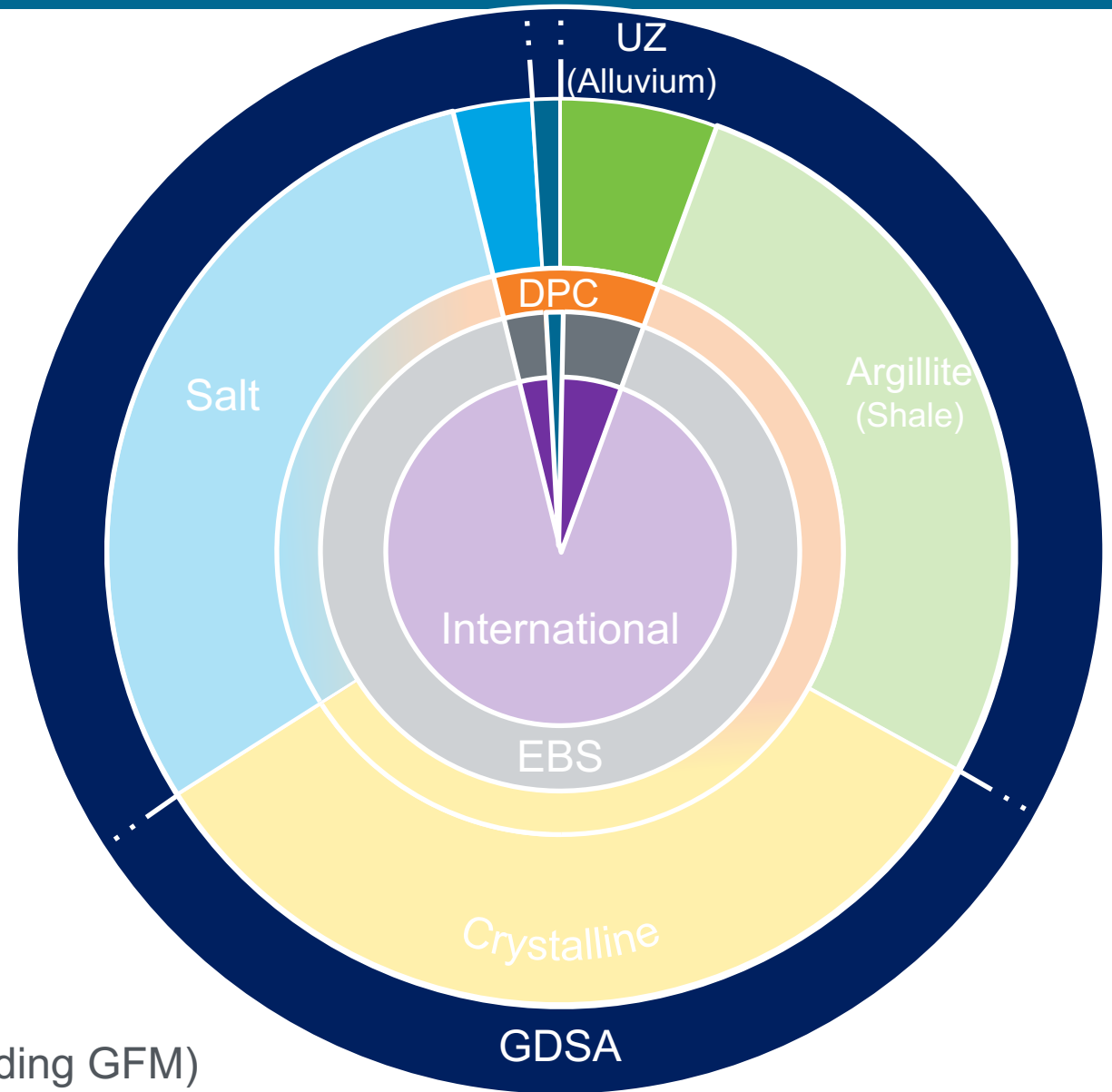
Acknowledgements

Mohamed Ebeida, Kris Kuhlman, Tara LaForce, Paul Mariner, Michael Nole,
Heeho Park, Frank Perry, Alex Salazar
Michael Gross, Elizabeth Miller, Terry Miller
Zhufeng Fang, Scott Painter



R&D Priorities

- Unsaturated alluvium reference case is not associated with a host rock R&D program
- Concept of a deep geologic repository in the unsaturated zone (UZ) is used to improve understanding and drive capability development
- Within Geologic Disposal Safety Assessment (GDSA) and Direct Disposal of Dual Purpose Canisters (DPC)
- Resulting capabilities are broadly applicable



UZ = Unsaturated Zone

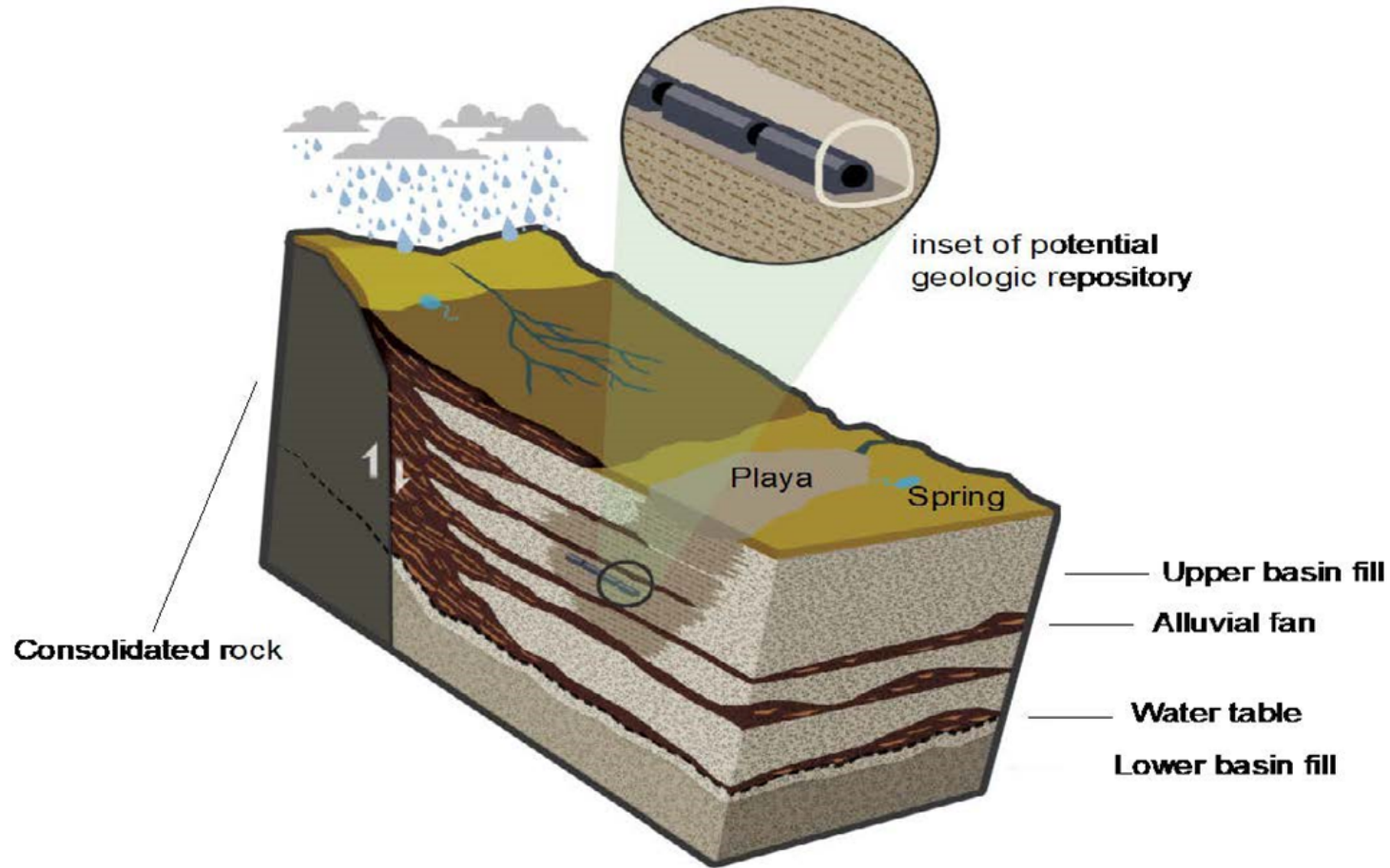
DPC = Dual Purpose Canisters

EBS = Engineered Barrier System

GDSA = Geologic Disposal Safety Assessment (including GFM)

Host Rock Characteristics

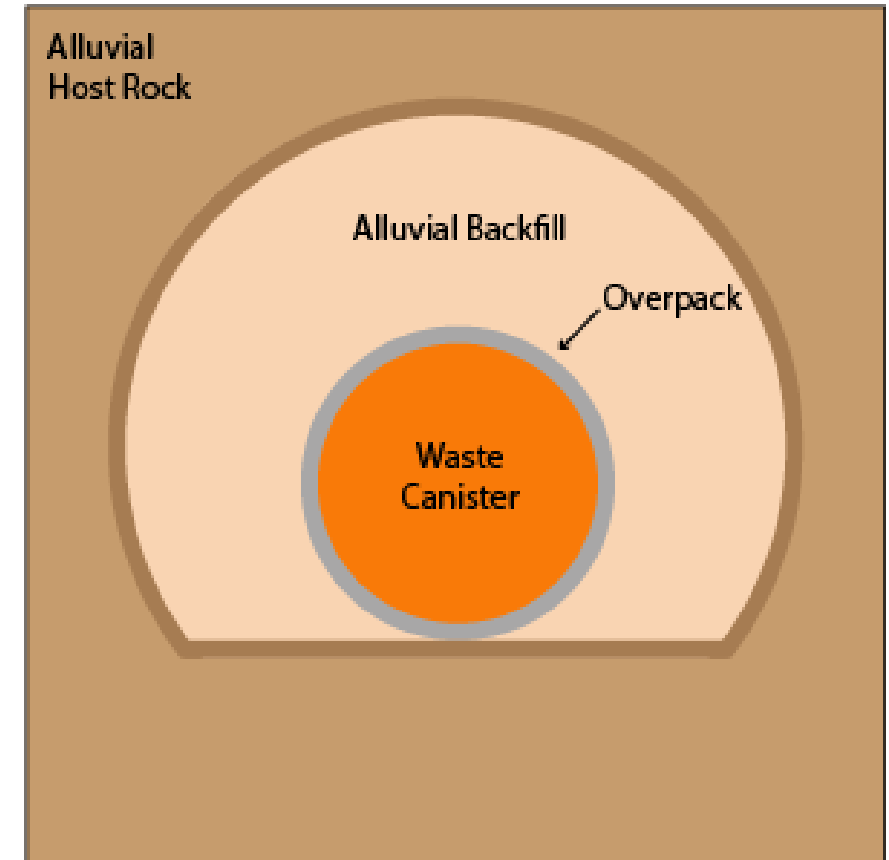
- Repository above the water table
- Complex stratigraphy and structure
- Lithologic heterogeneity
- Perched water tables and local aquifers
- Oxidizing in repository; reducing at some depth below water table



Mariner et al. 2018

Disposal Concept

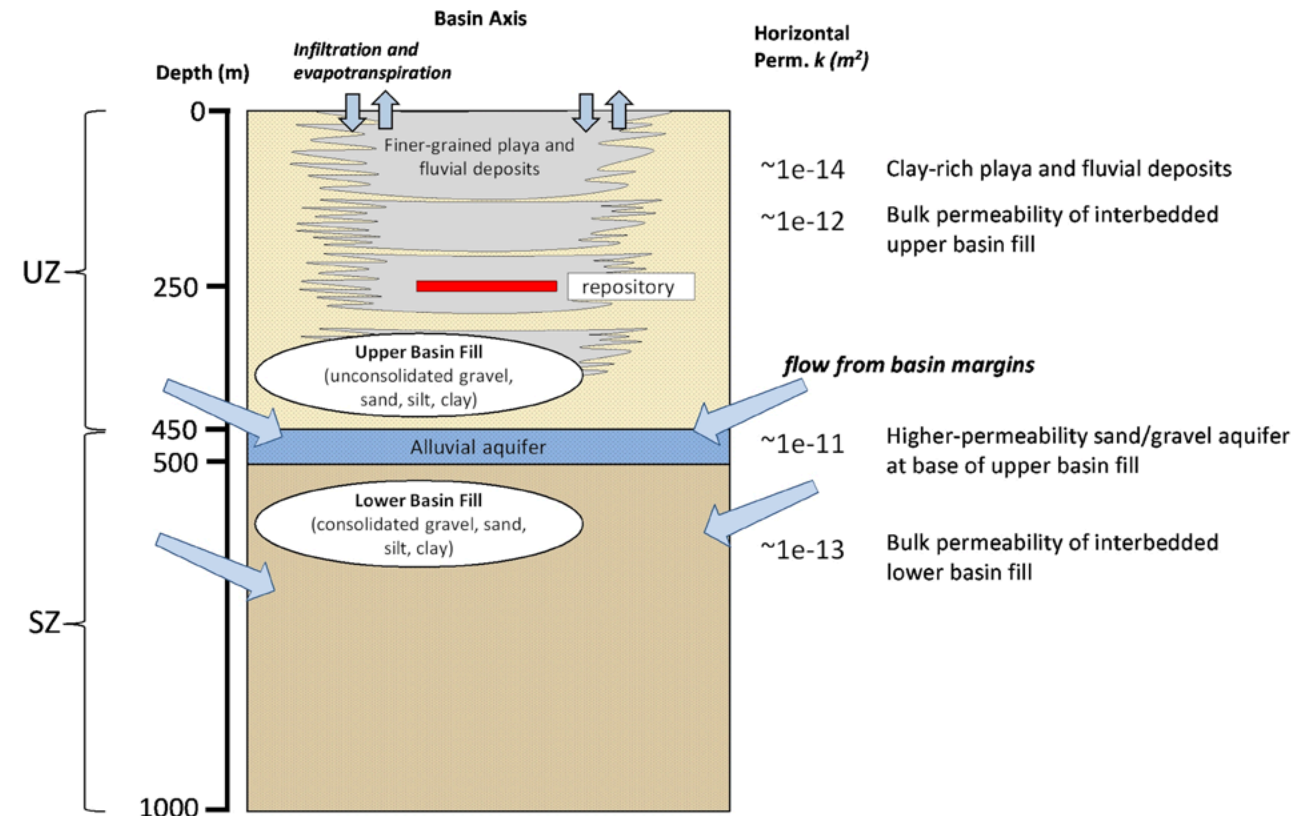
- Direct disposal of Dual Purpose Canisters (DPCs)
 - e.g., containing 24 or 37 pressurized water reactor (PWR) assemblies
- Overpack provides mechanical strength and appropriate protection against corrosion
- Crushed alluvium backfill provides shielding and protects against rockfall
- Thermal management achieved through waste package loading, aging, and spacing
- Maintain temperature $< 100\text{ }^{\circ}\text{C}$ and water saturation > 0 along axes of pillars



Sevougian et al. 2019

Post Closure Safety Strategy

- Containment
 - Corrosion resistant overpack
 - Low water saturation
- Limited Transport
 - Deep water table
 - Low effective permeability (k_{eff})
- Dilution
 - In saturated zone
- Climate variability (arid to pluvial)
 - In some locations recharge has not occurred over the last 100,000 y
 - Under pluvial conditions, downward liquid flux may be 5 to 10 mm/yr
 - Saturation would increase only until k_{eff} balances the infiltration rate



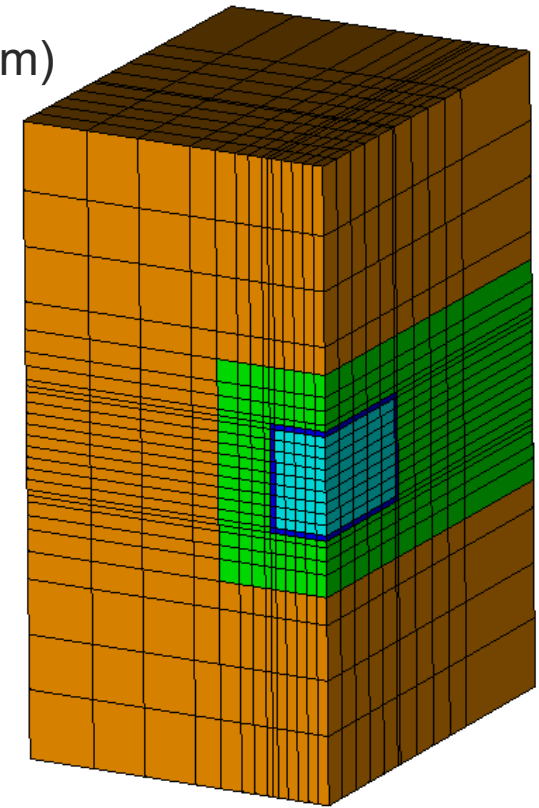
Mariner et al. 2018; Perry et al. 2018

Knowledge and Capability Gaps

- Criticality Consequence Analysis for Direct Disposal of DPCs
 - What is the power output that can be sustained before driving water out of the package?
 - What are impacts to radionuclide inventory?
 - What are impacts to disposal system?
- Integrated DPC/GDSA Process Model Capability Development
 - Heat and radionuclide source terms associated with criticality event
 - Numerical methods for solution of highly nonlinear partial differential equations
 - Temperature-dependent properties and processes
- Geologic Framework Modeling (GFM) Capability Development
 - Complex structure and stratigraphy
 - Spatial heterogeneity
 - Workflow from GFM to flow and transport simulation
- Geologic meshing

Priority R&D – DPC Criticality Consequence Analysis

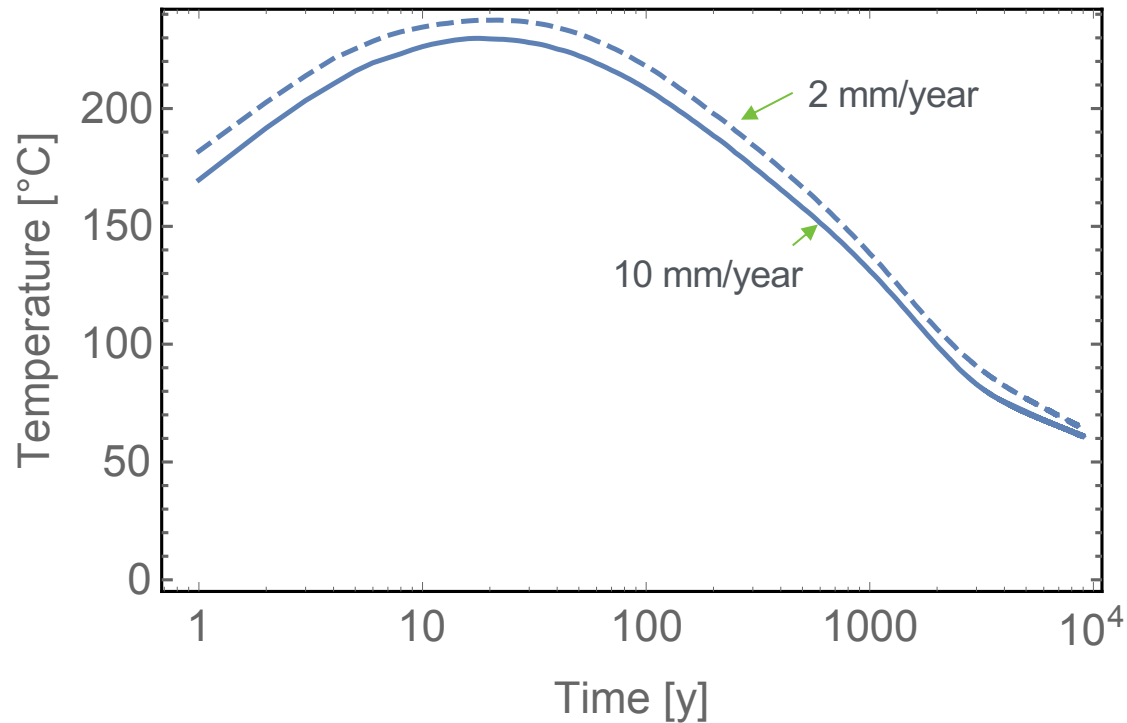
- Geometry
 - Consistent with GDSA Unsaturated Alluvium reference case (Sevougian 2019; Hardin and Kalinina 2016)
 - 40 m drift spacing, 40 m center-to-center spacing within drift
 - Square cross-section for drift (4m x 4m) and DPC (1.67 m x 5 m x 1.67 m)
 - 0.1 m overpack/shell
- Properties
 - Permeability 10^{-14} m^2 (alluvium) 10^{-13} m^2 (backfill)
 - Thermal conductivity = 1 W/(m·K) (dry) and 2 W/(m·K) (wet)
 - Canister internals = hydraulic properties of backfill
- Scenario
 - Postclosure with 37-PWR assembly and backfilled drifts in place
 - Top of DPC shell breached at 9000 years allowing water to enter
 - Initiate criticality event when canister is filled with water
- Cases
 - 10 mm/year and 2 mm/year percolation into waste package
 - Range of power outputs for criticality event



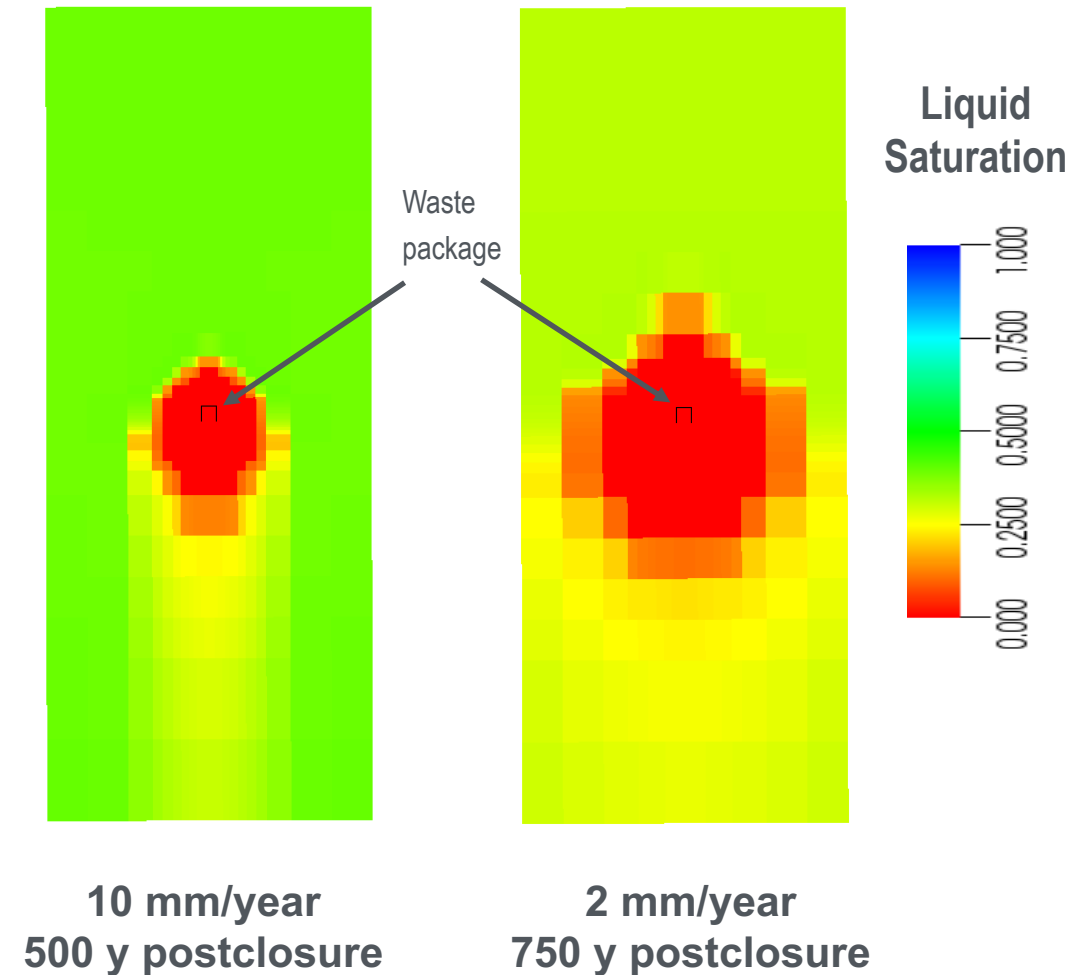
Price et al. 2019; Price 2020

37-PWR DPC in Unsaturated Alluvium: Before Breach

Temperature up to 9000 y



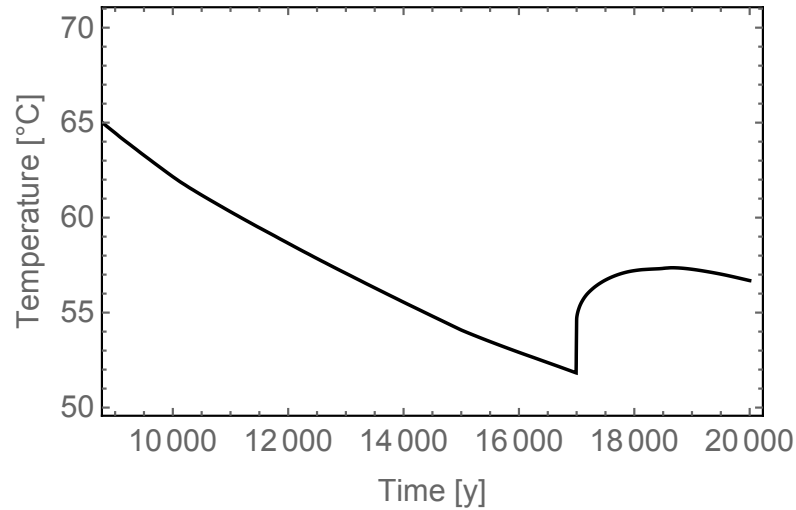
Maximum dryout
40 m x 80 m vertical cross sections



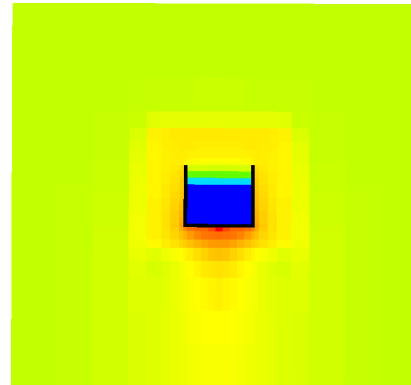
Price et al. 2019; Price 2020

37-PWR DPC Hypothetical Criticality Events

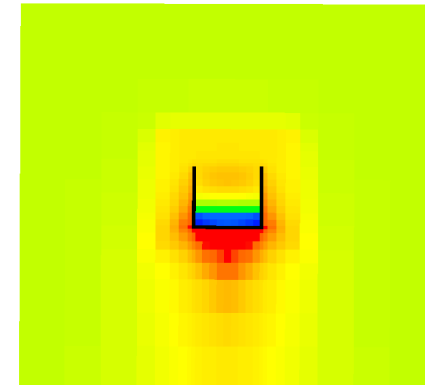
2 mm/year
100 W event



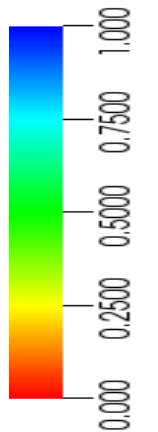
17,000 y



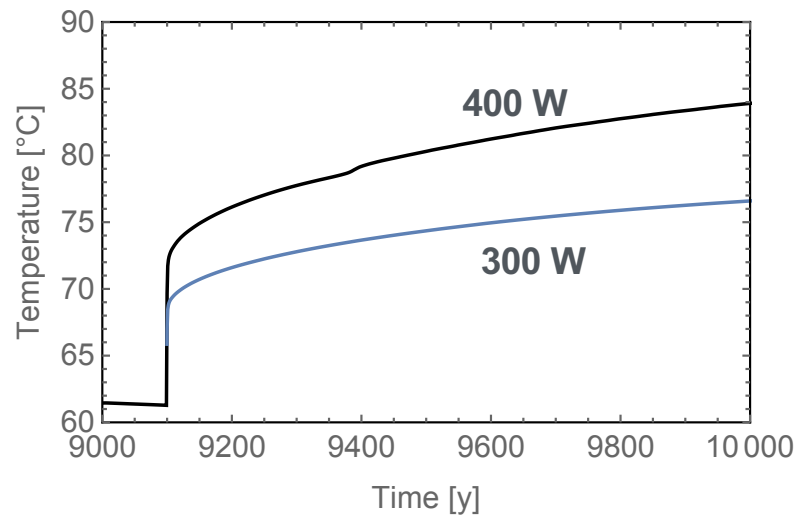
18,000 y



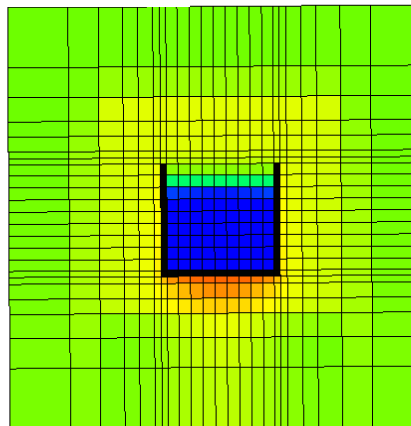
Liquid
Saturation



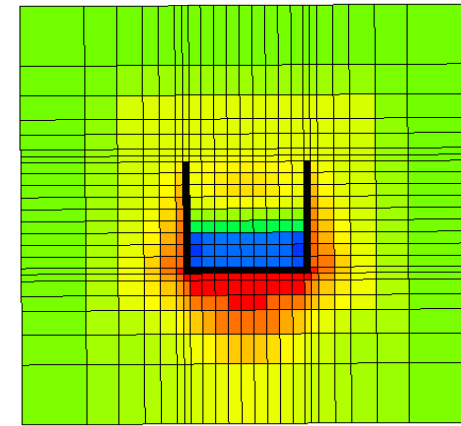
10 mm/year
400 W event



9100 y



9310 y

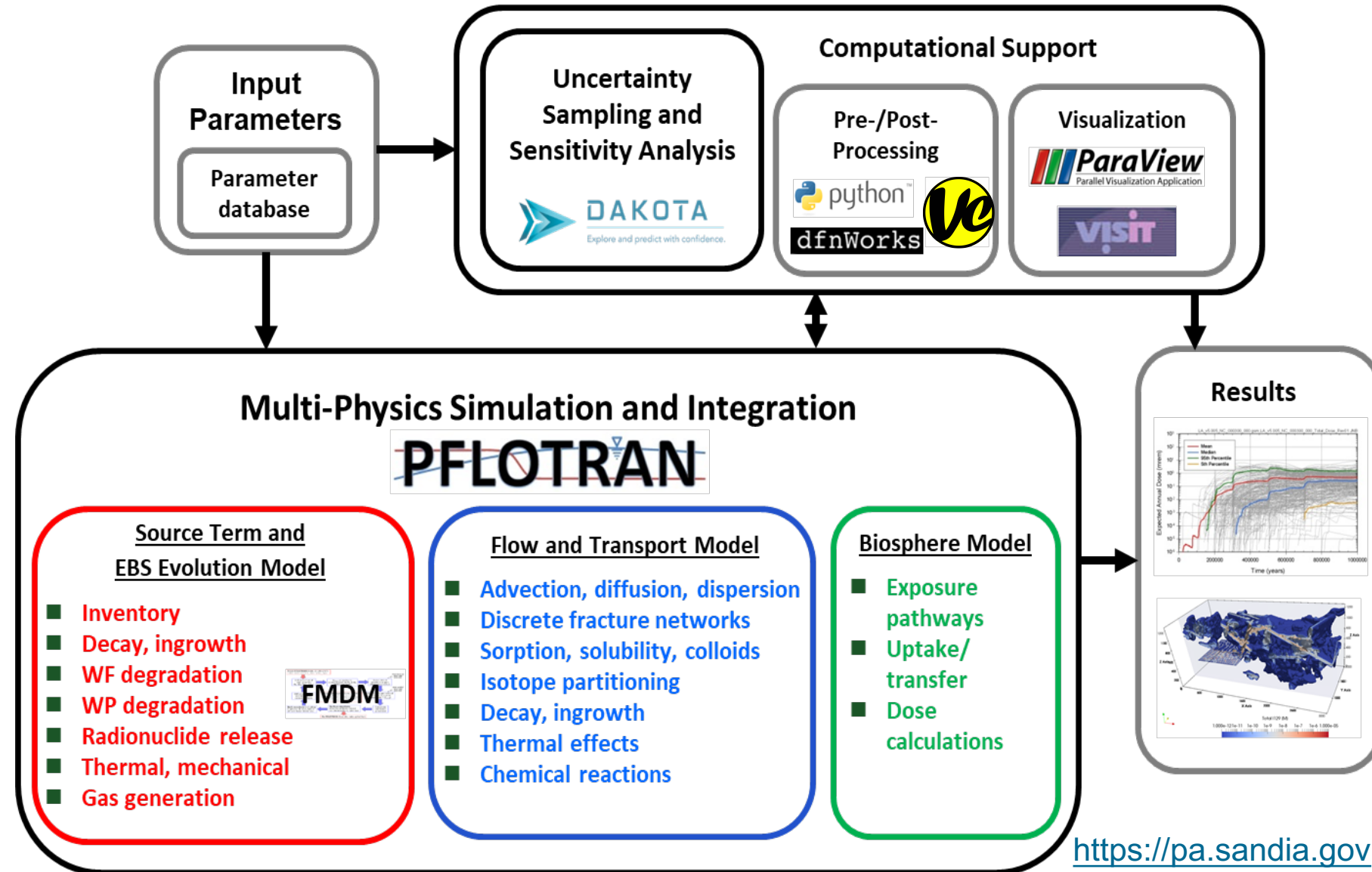


Price et al. 2019; Price 2020

Priority R&D – Simulation Capability for High Temperature Systems

■ GDSA Framework

- Open-source software
- Leverages high-performance computing
- Transparent model development and implementation

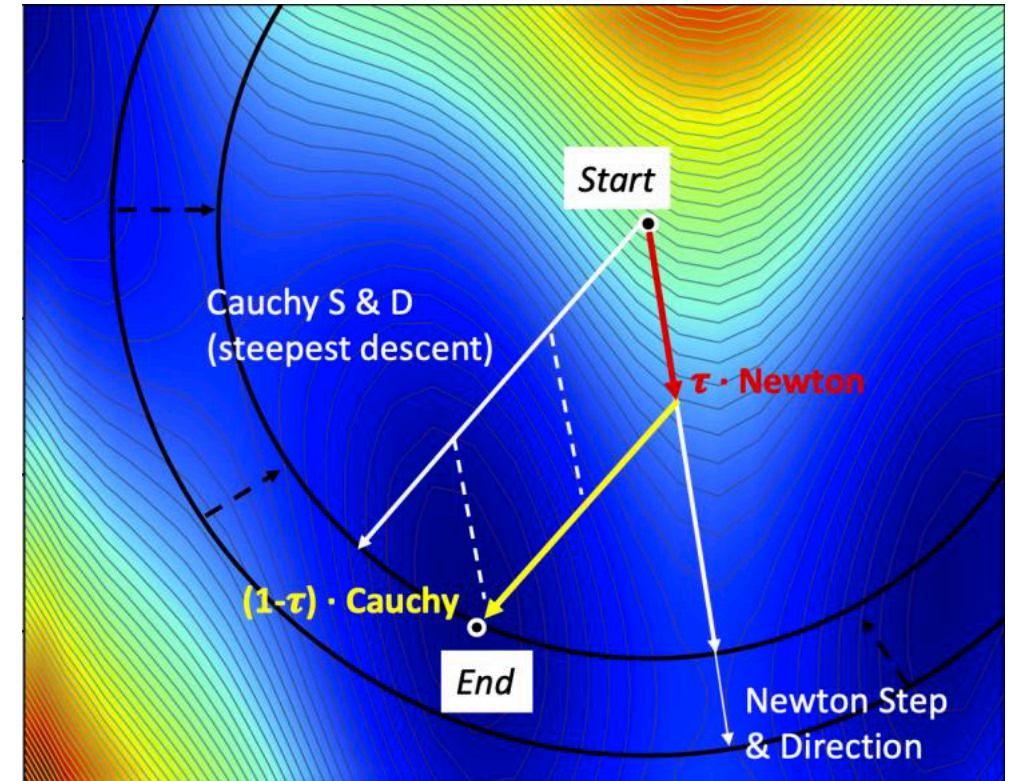


Advanced Nonlinear Solvers

Minimize the residual of a multi-dimensional function

1. Newton Step and Direction overshoots.
2. Newton Trust Region (NTR) truncates the step to keep it within the region in which minimum is predicted to exist.
3. Cauchy Step and Direction follows the steepest descent.
4. Newton Trust Region Dogleg Cauchy (NTRDC) combines NTR with Cauchy to find the minimum in a single iteration.

NTRDC reduces computation time by a factor of approximately 35.

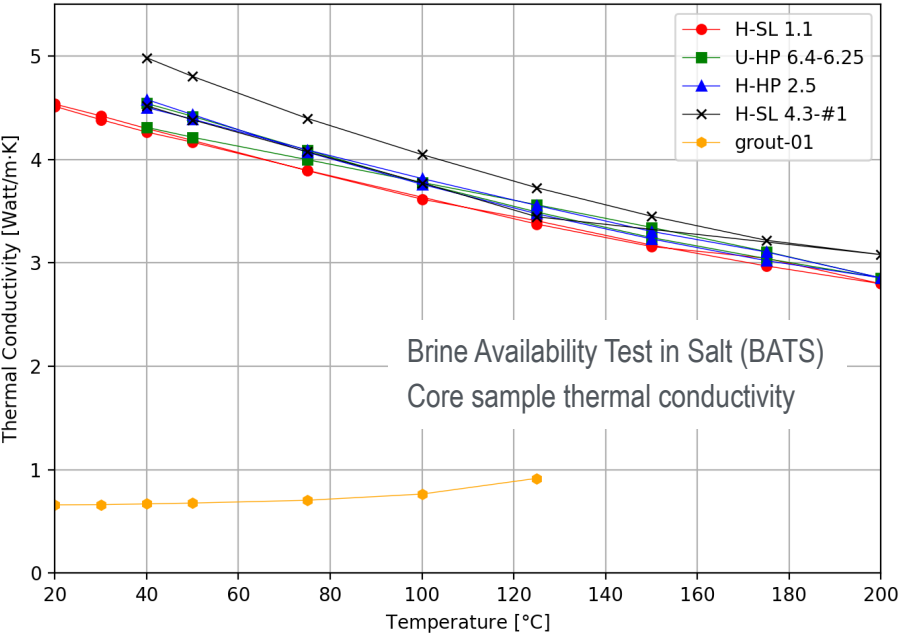


A demonstration of the NTRDC method. The algorithm corrects the appropriate Newton step-and-direction by reducing the trust region and adds Cauchy step-and-direction if the solution update can be improved further in the same iteration.

Mariner et al. 2020

Temperature-Dependent Thermal Conductivity

- Temperature-dependent processes
 - Corrosion
 - Mineralogical changes
 - Aqueous speciation (radionuclide solubilities)
 - Thermal expansion of solids
 - Buoyancy-driven fluid flow

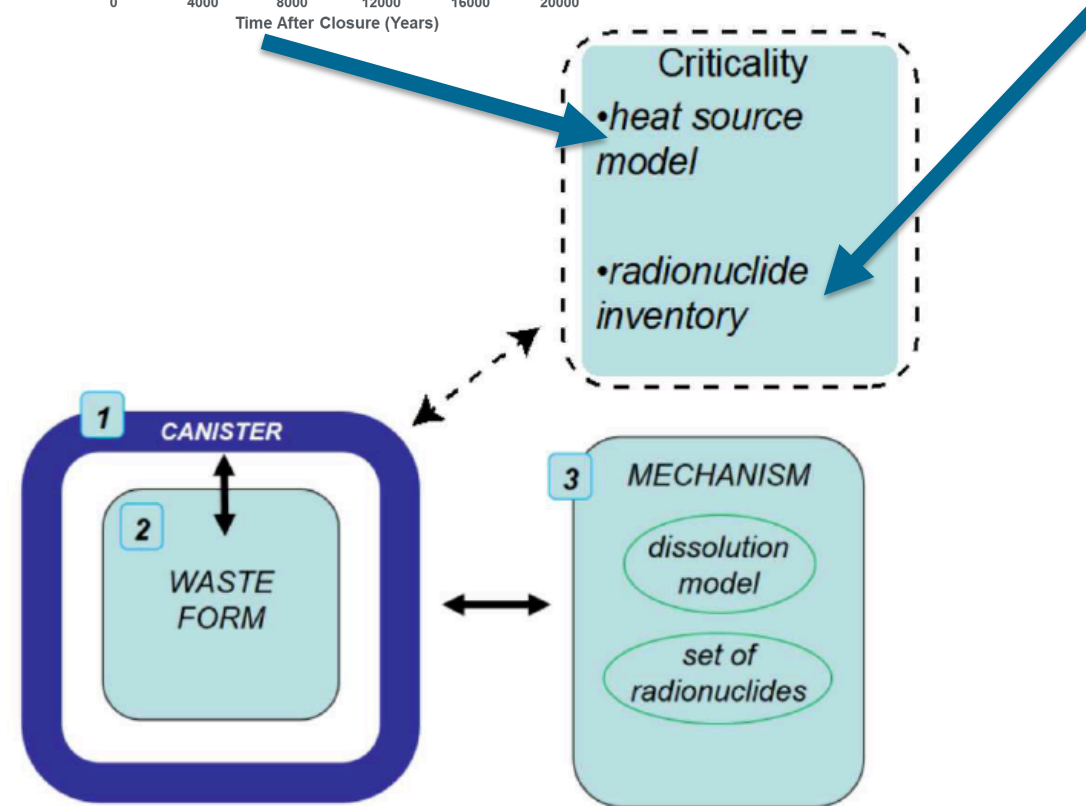
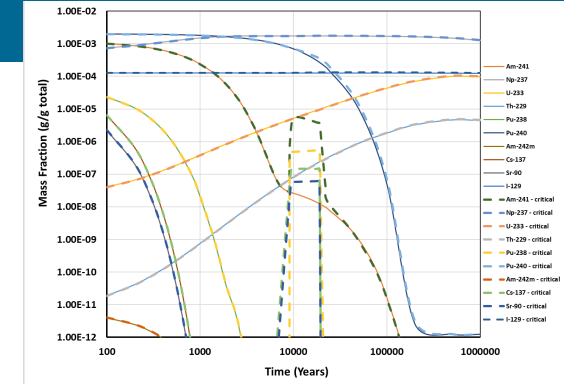
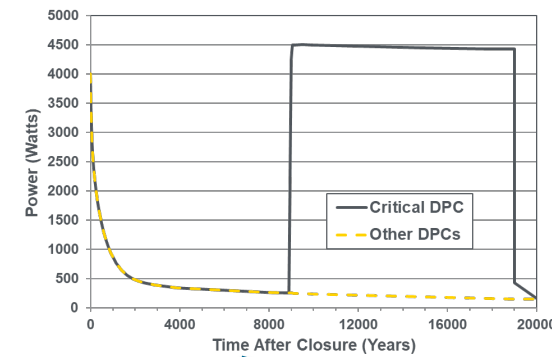


Kuhlman et al. 2020;
LaForce et al. 2020

Name	Function
Default	$\kappa_T^D(S_1)=\kappa_T^{dry}+\sqrt{S_1}(\kappa_T^{wet}-\kappa_T^{dry}) \tag{24}$
Constant	$\kappa_T=\kappa_T^C \tag{25}$
Linear Resistivity	$\kappa_T(S_1,T)=\frac{\kappa_T^D(S_1)}{a_1+a_2(T-T_{ref})} \tag{26}$ <p>Granite, basalt, shale, and salt</p>
Cubic Polynomial	$\kappa_T(S_1,T)=\kappa_T^D(S_1)[1+\beta_1(T-T_{ref})+\beta_2(T-T_{ref})^2+\beta_3(T-T_{ref})^3] \tag{27}$ <p>Various soils at temperatures up to 1700 °C</p>
Power Law	$\kappa_T(S_1,T)=\kappa_T^D(S_1)\left(\frac{T-T_{ref}}{300}\right)^{\gamma} \tag{28}$ <p>Crystals, ceramics, and engineering materials</p>

Criticality Submodule

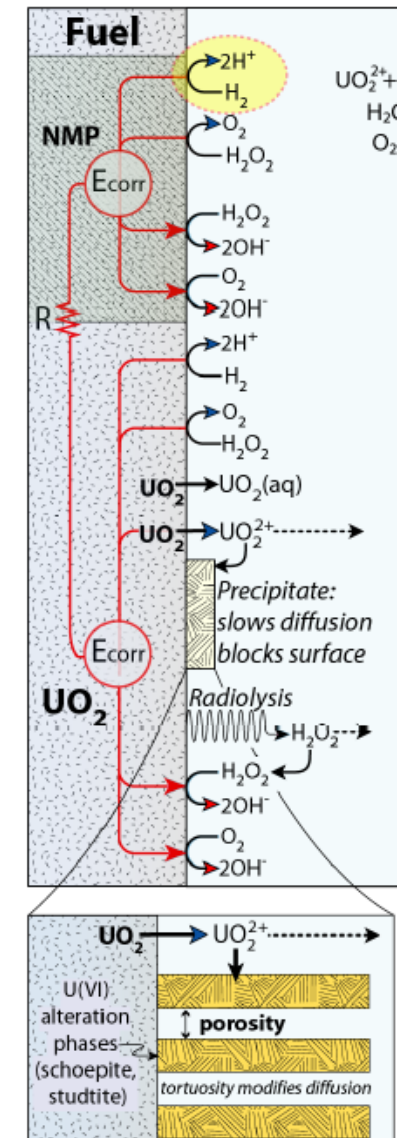
- Capability added to PFLOTRAN's Waste Form Process Model
- Reads files containing
 - Power as function of time
 - Radionuclide inventory as function of time
- Future: integrate with neutronics calculations to model criticality power output as a function of water saturation



Price et al. 2019

Fuel Matrix Degradation Model (FMDM)

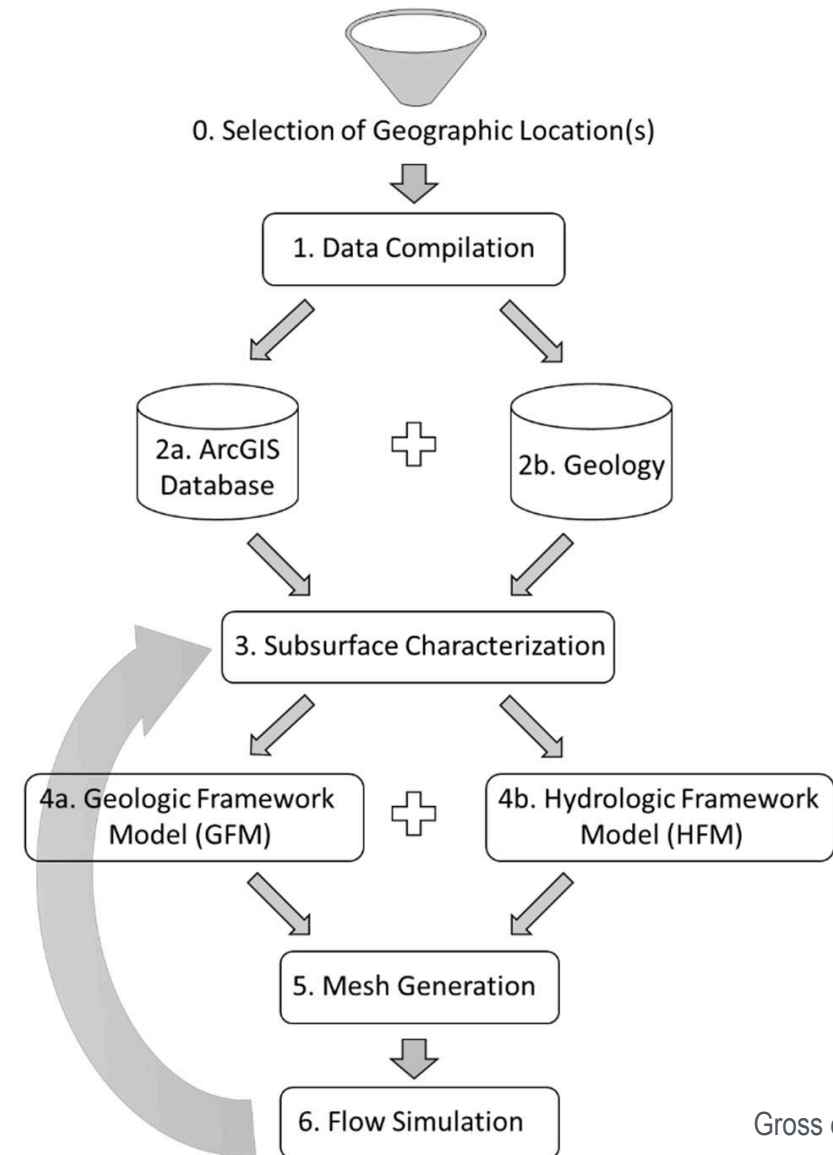
- 1-D reactive transport model to simulate dissolution of spent nuclear fuel (SNF) as a function of
 - Radiolysis
 - Diffusion of reactants through growing alteration layer
 - Interfacial corrosion potential
- GDSA Framework integration:
 - Implement efficient numerical methods for mechanistic coupling
 - Speed computation using machine-learned surrogate models
 - Future: Couple to evolution of in-package chemistry given specific conditions
 - Future: Model validation against SNF dissolution experiments



(Jerden et al. 2018; Mariner et al. 2020)

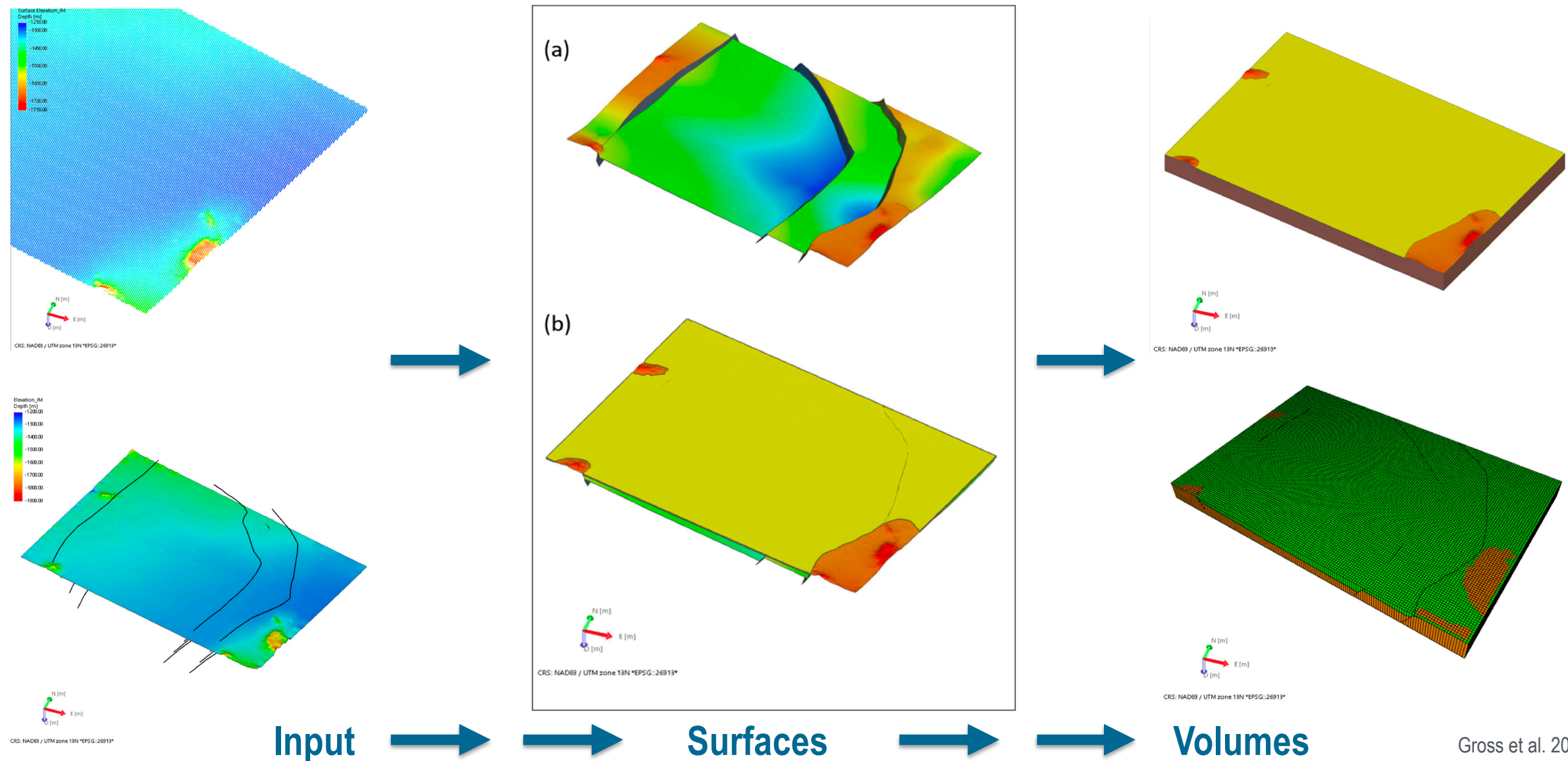
Priority R&D – 3-Dimensional Geologic Framework Model (GFM)

- Constructed from surfaces (stratigraphic horizons, faults) derived from 3D seismic surveys and borehole data
- Informed by digital elevation maps, geologic maps, cross sections, and conceptual models
- May also hold lithologic data, hydrologic data
- Iteration improves subsurface characterization



Gross et al. 2019

Complexity Makes Alluvial Basin GFM a Useful Test Case

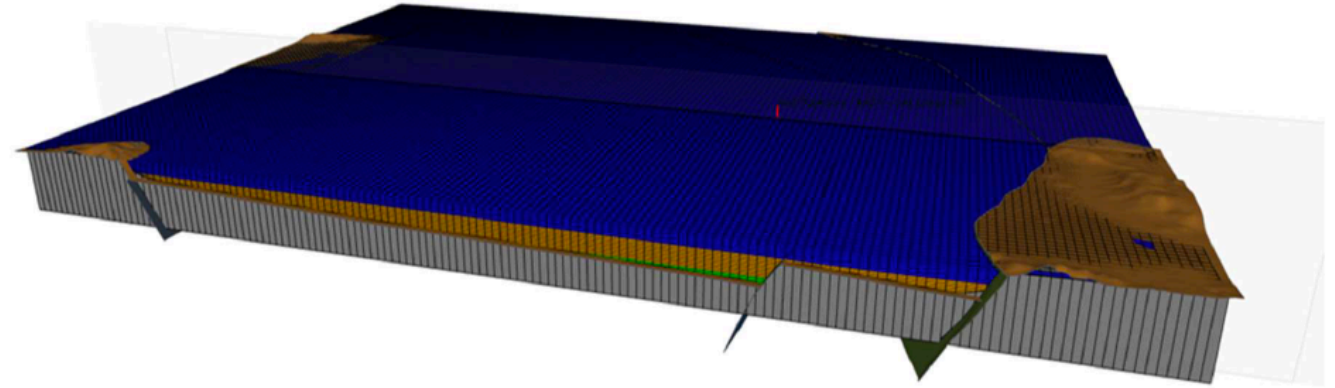


Adding Lithofacies and Hydrologic Properties

- Lithofacies

- 3 alluvial facies
- Bedrock

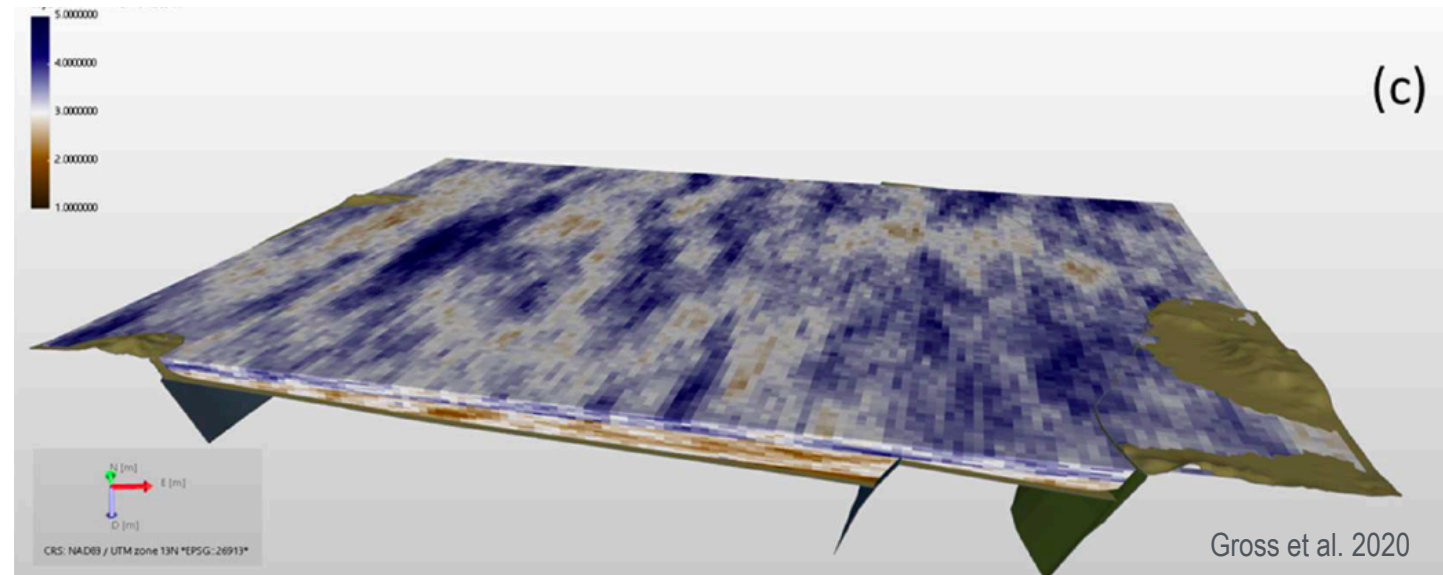
(a)



- Geostatistical distributions describe hydrologic properties

- Porosity
- Permeability

(c)



Gross et al. 2020

GFM to Computational Mesh

■ LaGriT

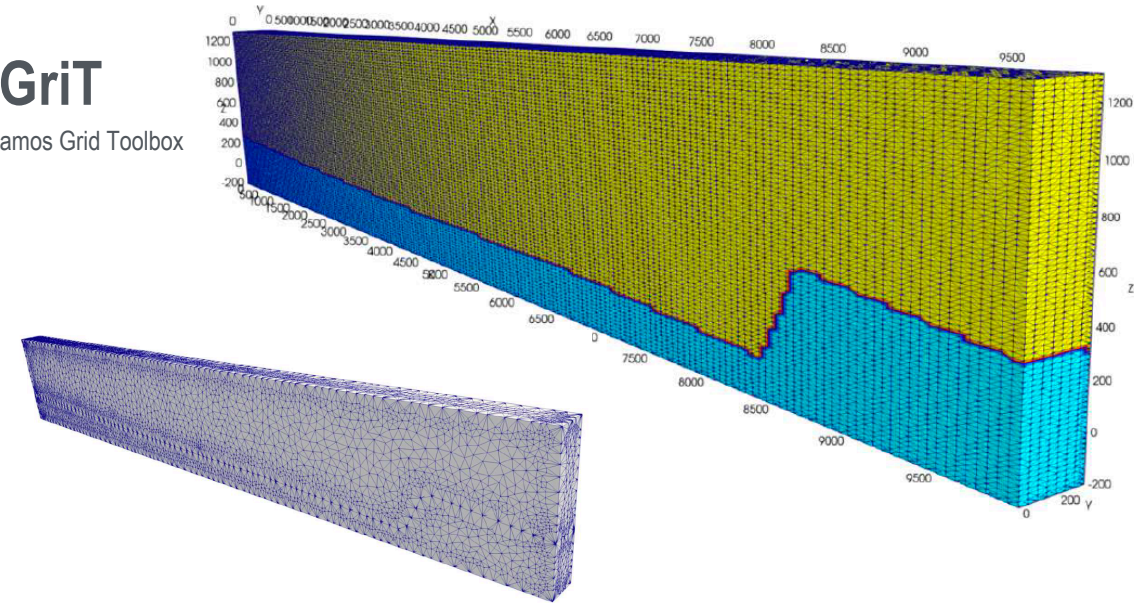
- Automate information processing and workflow to create computational mesh from GFM
- Versatile tools for user-controlled generation of Voronoi mesh using Delauney triangulation

■ VoroCrust

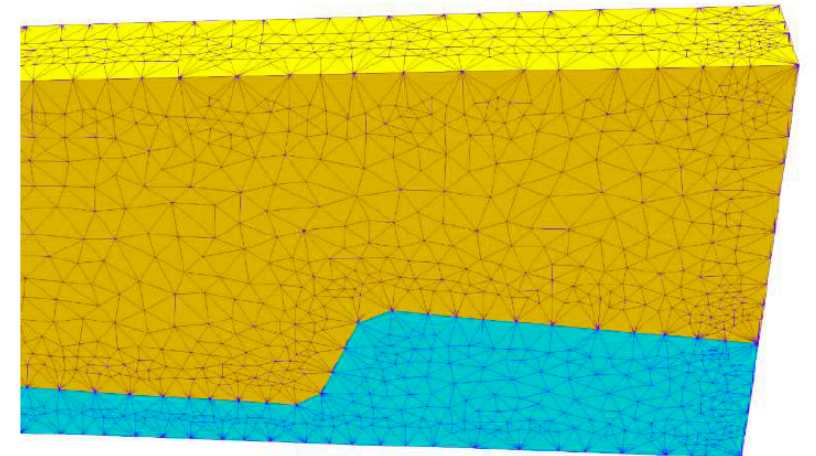
- The first provably correct algorithm for conforming Voronoi tessellation
- Automated algorithm simplifies meshing

LaGriT

Los Alamos Grid Toolbox



Vorocrust

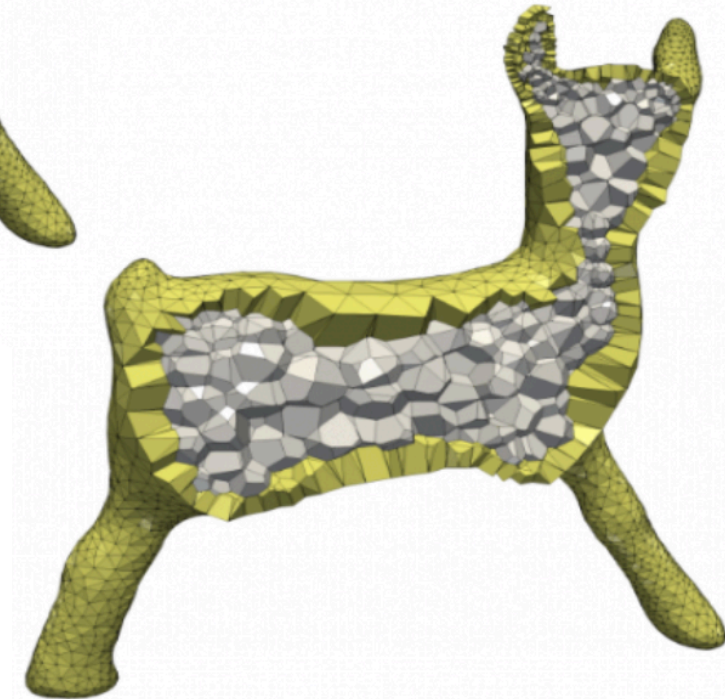
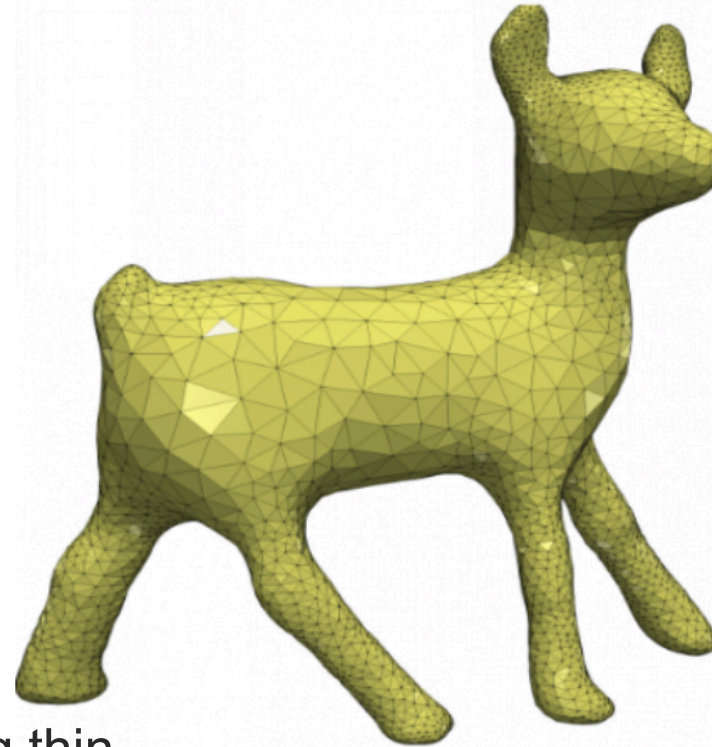


Gross et al. 2020

VoroCrust Development



- User-friendliness
 - User-controlled mesh specifications
 - Input and output formats
 - User manual and website
- Computational efficiency
 - Parallelization
- Advanced capability
 - Anisotropic Voronoi cells for meshing thin features and stratigraphic layers



Priority R&D – Forward Look at GDSA-DPC Integration

Prioritization of Cross-Cutting Research & Development Activities: High-Temperature Shale Reference Case, Disposal of Dual Purpose Canisters, and Geologic Disposal Safety Assessment

- Representative waste package loading using UNF ST&NDARDS database
- Temperature dependent reactions
 - Mineralogy
 - Aqueous speciation
 - Radionuclide solubility and sorption
- Corrosion models
 - Temperature-dependent, material-specific
 - Waste package
 - Cladding
 - Neutron absorbers
- Thermal-Hydrological-Mechanical evolution of the near field

Price 2020; Freeze and Howard 2020; Stein et al. 2020



References

- Freeze, G. A. and R. Howard 2020, July 27-28, 2020. *Cross-Cutting Research and Development*. Paper presented at the Nuclear Waste Technical Review Board Summer 2020 Board Meeting, Virtual Meeting. SAND2020-7275 PE.
- Gross, M., G. Bussod, C. W. Gable, R. Kelley, A. Lavadie-Bulnes, D. Milazzo, E. Miller, T. A. Miller, R. Roback, P. H. Stauffer, E. Swanson, and F. V. Perry 2019. *Progress Report on the Development of a Geologic Framework Model Capability to Support GDSA*. LA-UR-19-27943. Los Alamos National Laboratory, Los Alamos, NM.
- Gross, M., E. Miller, D. Milazzo, T. A. Miller, A. Lavadie-Bulnes, E. Swanson, N. Hayes-Rich, R. Roback, P. H. Stauffer, T. LaForce, and M. S. Ebeida 2020. *Geologic Framework Models for the Alluvial Basin Reference Case*. LA-UR-20-25594. Los Alamos National Laboratory, Los Alamos, NM.
- Hardin, E. L. and E. Kalinina 2016. *Cost Estimation Inputs for Spent Nuclear Fuel Geologic Disposal Concepts (Revision 1)*. SAND2016-0235. Sandia National Laboratories, Albuquerque, NM.
- Jerden, J. E., V. K. Gattu and W. Ebert 2018. Update on Validation and Incorporation of a New Steel Corrosion Module into Fuel Matrix Degradation Model. Argonne National Laboratory, Illinois.
- Kuhlman, K. L., M. M. Mills, R. S. Jayne, E. N. Matteo, C. Herrick, M. Nemer, J. Heath, Y. Xiong, C. Choens, P. H. Stauffer, H. Boukhalfa, E. Guiltinan, T. Rahn, D. Weaver, B. Dozier, S. Otto, J. Rutqvist, Y. Wu, M. Hu, S. Uhlemann, and J. Wang 2020. *FY20 Update on Brine Availability Test in Salt*. Sandia National Laboratories, Albuquerque, NM.
- LaForce, T., K. W. Chang, F. V. Perry, T. S. Lowry, E. Basurto, R. S. Jayne, D. M. Brooks, S. Jordan, E. R. Stein, R. C. Leone, and M. Nole 2020. *GDSA Repository Systems Analysis Investigations in FY2020*. SAND2020-12028R. Sandia National Laboratories, Albuquerque, NM.
- Mariner, P. E., M. Nole, E. Basurto, T. M. Berg, K. W. Chang, B. J. Debusschere, A. C. Eckert, M. S. Ebeida, M. Gross, G. Hammond, J. Harvey, S. Jordan, K. L. Kuhlman, T. LaForce, R. C. Leone, W. C. McLendon, M. M. Mills, H. Park, F. V. Perry, A. Salazar, D. T. Seidl, S. D. Sevougian, E. R. Stein, and L. P. Swiler 2020. *Advances in GDSA Framework Development and Process Model Integration*. SAND2020-10787R. Sandia National Laboratories, Albuquerque, NM.
- Mariner, P. E., E. R. Stein, S. D. Sevougian, L. J. Cunningham, J. M. Frederick, G. E. Hammond, T. S. Lowry, S. Jordan, and E. Basurto 2018. *Advances in Geologic Disposal Safety Assessment and an Unsaturated Alluvium Reference Case*. SFWD-SFWST-2018-000509; SAND2018-11858R. Sandia National Laboratories, Albuquerque, NM.
- Perry, F. V., E. Swanson, G. Bussod, D. Milazzo, and R. Kelley 2018. *Regional Geologic Evaluations for Disposal of HLW and SNF: Alluvial Basins of the Basin and Range Province*. LA-UR-18-28909. Los Alamos National Laboratory, Los Alamos, NM.
- Price, L. 2020, July 28, 2020. *Ongoing Research and Development: Consequences of Nuclear Criticality in DPCs After Disposal*. Presented at the Nuclear Waste Technical Review Board Summer 2020 Board Meeting, Virtual Meeting. SAND2020-7153 PE.
- Price, L., A. A. Alsaed, A. Barela, P. V. Brady, F. Gelbard, M. Gross, M. Nole, J. L. Prouty, K. Banerjee, S. Bhatt, G. G. Davidson, Z. Fang, R. Howard, S. R. Johnson, S. L. Painter, M. Swinney, and E. Gonzalez 2019. *Preliminary Analysis of Postclosure DPC Criticality Consequences*. SAND2020-4106. Sandia National Laboratories, Albuquerque, NM.
- Sevougian, S. D., E. R. Stein, T. LaForce, F. V. Perry, T. S. Lowry, L. J. Cunningham, M. Nole, C. B. Haukwa, K. W. Chang, and P. E. Mariner 2019. *GDSA Repository Systems Analysis Progress Report*. M2SF-19SN010304051 SAND2019-5189R. Sandia National Laboratories, Albuquerque, NM.
- Stein, E. R., C. Bryan, D. C. Dobson, E. L. Hardin, C. F. Jove Colon, C. Lopez, E. N. Matteo, S. Mohanty, M. Pendleton, F. V. Perry, J. L. Prouty, D. Sassani, Y. Wang, J. Rutqvist, L. Zheng, K. B. Sauer, F. Caporuscio, R. Howard, A. Adeniyi, K. Banerjee, and R. Joseph 2020. *Disposal Concepts for a High-Temperature Repository in Shale*. DRAFT. Sandia National Laboratories, Albuquerque, NM.