



LAWRENCE
LIVERMORE
NATIONAL
LABORATORY

LLNL-TR-806278

American WAKE experimeNt (AWAKEN)

P. Moriarty, N. Hamilton, M. Debnath, T. Herges, B.
Isom, J. K. Lundquist, D. Maniaci, B. Naughton, R.
Pauly, J. Roadman, W. Shaw, J. van Dam, S. Wharton

March 4, 2020

Disclaimer

This document was prepared as an account of work sponsored by an agency of the United States government. Neither the United States government nor Lawrence Livermore National Security, LLC, nor any of their employees makes any warranty, expressed or implied, or assumes any legal liability or responsibility for the accuracy, completeness, or usefulness of any information, apparatus, product, or process disclosed, or represents that its use would not infringe privately owned rights. Reference herein to any specific commercial product, process, or service by trade name, trademark, manufacturer, or otherwise does not necessarily constitute or imply its endorsement, recommendation, or favoring by the United States government or Lawrence Livermore National Security, LLC. The views and opinions of authors expressed herein do not necessarily state or reflect those of the United States government or Lawrence Livermore National Security, LLC, and shall not be used for advertising or product endorsement purposes.

This work performed under the auspices of the U.S. Department of Energy by Lawrence Livermore National Laboratory under Contract DE-AC52-07NA27344.



American WAKE experiment (AWAKEN)

Patrick Moriarty,¹ Nicholas Hamilton,¹ Mithu Debnath,¹
Tommy Herges,² Brad Isom,³ Julie K. Lundquist,^{1,4}
David Maniaci,² Brian Naughton,² Rebecca Pauly,¹
Jason Roadman,¹ Will Shaw,³ Jeroen van Dam,¹
and Sonia Wharton⁵

¹ *National Renewable Energy Laboratory*

² *Sandia National Laboratories*

³ *Pacific Northwest National Laboratory*

⁴ *University of Colorado Boulder*

⁵ *Lawrence Livermore National Laboratory*

**NREL is a national laboratory of the U.S. Department of Energy
Office of Energy Efficiency & Renewable Energy
Operated by the Alliance for Sustainable Energy, LLC**

This report is available at no cost from the National Renewable Energy Laboratory (NREL) at www.nrel.gov/publications.

Contract No. DE-AC36-08GO28308

Technical Report
NREL/TP-5000-75789
May 2020



American WAKE experiment (AWAKEN)

Patrick Moriarty,¹ Nicholas Hamilton,¹ Mithu Debnath,¹
Tommy Herges,² Brad Isom,³ Julie K. Lundquist,^{1,4}
David Maniaci,² Brian Naughton,² Rebecca Pauly,¹
Jason Roadman,¹ Will Shaw,³ Jeroen van Dam,¹
and Sonia Wharton⁵

¹ *National Renewable Energy Laboratory*

² *Sandia National Laboratories*

³ *Pacific Northwest National Laboratory*

⁴ *University of Colorado Boulder*

⁵ *Lawrence Livermore National Laboratory*

Suggested Citation

Moriarty, Patrick, Nicholas Hamilton, Mithu Debnath, et al. 2020. *American WAKE experiment (AWAKEN)*. Golden, CO: National Renewable Energy Laboratory. NREL/TP-5000-75789. <https://www.nrel.gov/docs/fy20osti/75789.pdf>.

**NREL is a national laboratory of the U.S. Department of Energy
Office of Energy Efficiency & Renewable Energy
Operated by the Alliance for Sustainable Energy, LLC**

This report is available at no cost from the National Renewable Energy Laboratory (NREL) at www.nrel.gov/publications.

Contract No. DE-AC36-08GO28308

Technical Report
NREL/TP-5000-75789
May 2020

National Renewable Energy Laboratory
15013 Denver West Parkway
Golden, CO 80401
303-275-3000 • www.nrel.gov

NOTICE

This work was authored in part by the National Renewable Energy Laboratory, operated by Alliance for Sustainable Energy, LLC, for the U.S. Department of Energy (DOE) under Contract No. DE-AC36-08GO28308. Funding provided U.S. Department of Energy Wind Energy Technologies Office. The views expressed herein do not necessarily represent the views of the DOE or the U.S. Government.

This work was performed under the auspices of the U.S. Department of Energy by Lawrence Livermore National Laboratory under Contract DE-AC52-07NA27344. This report is also published as Lawrence Livermore National Laboratory Technical Report LLNL-TR-806278.

Pacific Northwest National Laboratory is operated by Battelle Memorial Institute for the DOE under Contract DE-AC05-76RL01830.

Sandia National Laboratories is a multitechnology laboratory managed and operated by National Technology & Engineering Solutions of Sandia LLC, a wholly owned subsidiary of Honeywell International Inc., for the U.S. Department of Energy's National Nuclear Security Administration under contract DE-NA0003525. This report is also published as Sandia National Laboratories Report SAND2020-4296 O.

This report is available at no cost from the National Renewable Energy Laboratory (NREL) at www.nrel.gov/publications.

U.S. Department of Energy (DOE) reports produced after 1991 and a growing number of pre-1991 documents are available free via www.OSTI.gov.

Cover Photos by Dennis Schroeder: (clockwise, left to right) NREL 51934, NREL 45897, NREL 42160, NREL 45891, NREL 48097, NREL 46526.

NREL prints on paper that contains recycled content.

Executive Summary

The national laboratories, directed by the U.S. Department of Energy Wind Energy Technologies Office, will organize, design, and execute a landmark international wake observation and validation campaign known as the American WAKE experiment or AWAKEN. This document describes the vision and purpose for AWAKEN and describes some of the organizational activities that have taken place to date. The driving need for this experimental campaign is that wake interactions are among the least understood physical phenomena in wind plants today, leading to unexpected power and financial losses. New observation data gathered will be used to further validate wind plant models and lead to both improved layout and more optimal operation of wind farms with greater power production and improved reliability, ultimately leading to lower wind energy costs.

This campaign will occur in the U.S. Midwest, where the largest concentration of wind farms in the U.S. is located and where significant future growth is most likely. The field campaign will provide a data set that is unique among wake studies, based on location, scope, and observational fidelity: most wake studies have largely focused on offshore wind farms, which are not currently critical to the U.S. wind energy supply, and with a limited number of observations. While AWAKEN is focused on land-based wind farms in flat terrain, many of the observations will help researchers understand fundamental wake behavior applicable in both offshore and complex terrain environments.

Project organization has begun with initial kickoff meetings to stimulate interest in the community and prioritize science goals that a new wake field campaign can and should accomplish. The design of the experimental campaign will rely on the successful collaborative model based on one used within the New European Wind Atlas. Leading up to the experiment, U.S.-Department-of-Energy-funded researchers will assist interested participants with developing proposals for individual external funding agencies to build a large collaborative team funded through multiple sources. The AWAKEN team will include industry members, such as wind farm owners, who wish to learn more about wake impacts within their wind farms, turbine manufacturers who want to study turbine response in wind farm environments, and observational measurement companies with a desire to demonstrate their own sensing technology applied to the wind energy wake problem. The national laboratories are uniquely suited to assemble the international team to perform the observational and model validation campaign envisioned.

Researchers will narrow their experimental design and select a site that will fulfill the critical science goals identified by the international group of experts. Once a site has been identified, numerical studies of the potential observation campaign will be conducted to give researchers a sense of quantities that can be observed and to what resolution in the weather situations typical of this location. These simulations will also assist researchers in identifying optimal placement of instruments for the greatest potential benefit toward validation of numerical models. Concurrently, researchers will develop a roadmap for advanced microscale sensing technologies to improve observational capabilities of complex flow fields within wind plants. The expert-driven roadmap will guide the multiyear effort to advance remote sensing technologies specifically for wind energy applications. New sensing technologies will be simulated and potentially prototyped for use in the AWAKEN campaign, once sufficient measurement quality and reliability are achieved.

Researchers will then identify the optimal instrumentation to acquire through purchase, rental, or collaboration and then commence setup of the experiment. With all partners in place, the experiment will be executed through an iterative process of observation and model validation focused primarily on the important wake science goals outlined in planning meetings. Researchers will develop new model validation benchmarks that will be used internationally to improve a wide range of wind plant models worldwide. Data gathered from the field campaign and a select set of validation simulations will be made publicly available through the Atmosphere to Electrons Data Archive and Portal. A series of publications of the field campaign and validation studies will be prepared and presented at relevant academic and industry events.

Contents

Executive Summary	ii
1 Introduction	1
2 Previous Wake Observation Campaigns	2
2.1 Future Directions for Observational Technology	3
3 Project Objectives and Outcomes	4
4 Project Tasks	5
4.1 Test Planning	5
4.2 Partnership Engagement	7
4.3 Microscale Instrumentation Development	7
4.4 Experimental Design	8
4.5 Experimental Execution	10
4.6 Data Analysis and Model Validation and Archival	10
5 Expert Elicitation Meeting	12
5.1 Key Points by Speakers	12
5.2 Feedback Sessions	12
6 Next Steps	16
7 Timeline and Milestones	17
References	18
A Science Goals	23
A.1 Instrumentation Matched to Science Questions	26
B Feedback sessions	28
B.1 Feedback Session #1 - Science Goals	28
B.2 Feedback Session #2 - Science Goal Prioritization	30
B.3 Feedback Session #3 - Testing Plan Feedback	30
C Expert Elicitation Meeting Agenda	36
D Expert Elicitation Meeting Attendees	38

1 Introduction

The American WAKE experimeNt (AWAKEN) is an international multi-institutional wind energy field campaign to better understand wake losses within operational wind farms. Wake interactions are among the least understood physical interactions in wind plants today, leading to unexpected power and profit losses. For example, Ørsted, the world's largest offshore wind farm developer, recently announced (Ørsted 2019) a downward revision in energy estimates across their energy generation portfolio, primarily caused by underprediction of energy losses from wind farm blockage and wakes. In their announcement, they noted that the standard industry models used for their original energy estimates were inaccurate, and this was likely an industry-wide issue. To help further improve and validate wind plant models across scales from individual turbines as well as interfarm interactions between plants, new observations, such as those planned for AWAKEN, are critical. These model improvements will enable both improved layout and more optimal operation of wind farms with greater power production and improved reliability, ultimately leading to lower wind energy costs.

The average wind power plant in the United States loses 10% of its potential energy production to wake interactions between turbines and wind farms (Clifton, Smith, and Fields 2016), some of which may be recoverable through advanced wind farm design and operation. The models used to predict these losses have uncertainty levels of 20%–50%, which lead to excessive wind project financial costs. The reduction in overall plant power output and the mechanical stresses associated with transient turbine-to-turbine wake interaction are among the major causes of poor wind plant performance as well as a contributor to degraded turbine reliability. Addressing these issues requires detailed knowledge about the complex fluid dynamic interactions throughout a plant and well-validated models to predict future performance and impacts. The ability to predict wake evolution, merging, and dissipation, along with plant inflow conditions and turbine control strategies, will improve optimization of plant layout, power output, and turbine reliability. More accurate modeling capabilities can also lead to revolutionary turbine and plant designs that will support the renewable-energy-centered grid of the future (Veers et al. 2019). Because of their impact on wind plant profitability and unresolved physical understanding, wakes have been a significant focus of the U.S. Department of Energy's (DOE's) Atmosphere to Electrons (A2e) program (Cline, Haupt, and Shaw 2017) since its inception, and AWAKEN represents a culmination of the work done within this program to date.

Numerous data sets gathered from around the world have been used in initial validation studies of increasing sophistication with the passage of time. Some of the first data sets consisted primarily of coarse observations of wakes using supervisory control and data acquisition (SCADA) data available from offshore wind farms (e.g., Barthelmie et al. 2010; Hansen et al. 2012). More recently, new data sets have directly measured the wake and its impact. The advent of scanning lidar and scanning radar technology led to remote-sensing studies of individual wakes. Some of these campaigns took place at DOE facilities (Smalikho et al. 2013; Aitken et al. 2014a), research sites (Iungo, Wu, and Porté-Agel 2013; Vollmer et al. 2015; Machefaux et al. 2016; Kumer et al. 2016; Trujillo et al. 2016; Krishnamurthy et al. 2017), or at commercial facilities (Käsler et al. 2010; Hirth et al. 2012; Iungo, Wu, and Porté-Agel 2013; Aitken and Lundquist 2014; Bodini, Zardi, and Lundquist 2017; Menke et al. 2018; Wildmann, Vasiljevic, and Gerz 2018; Bromm et al. 2018). Recent field campaigns have also included two measurement campaigns currently taking place under the A2e Wake Dynamics program: the Sandia National Laboratories (Sandia) Scaled Wind Farm Technology (SWiFT) wake measurement and validation campaign (Herges et al. 2017; Doubrawa et al. 2019) and the NextEra Peetz Table wake steering campaign (Fleming et al. 2019; Murphy, Lundquist, and Fleming 2019; Fleming et al. 2020). Experiments at the SWiFT facility on smaller-scale V27 turbines have produced the highest resolution data to date (~ 1.25 m) (Herges et al. 2017), but questions remain as to what physics are sufficiently represented that are relevant to modern utility-scale turbines. The ongoing test at Peetz Table has primarily utilized SCADA data output, with a small effort to directly observe wakes using scanning lidars.

To beyond smaller-scale and ungeneralizable tests that examine the wakes from a handful of turbines and capture full-plant interaction physics, a multinational wakes experiment is needed. This new experiment can leverage the experience, instrumentation, and combined funding of multiple institutions to create the most highly detailed, comprehensive wind energy wake experiment to date is needed.

Investment in augmented observational technology is also required to complement high-fidelity simulations to improve the systematic validation of wind plant modeling tools. Validation has not advanced as quickly as model development,

mainly because of the lack of observations at a similar range of fidelities, particularly for full-scale wind plants. Recent advances in remote-sensing technology, such as Ka-band and X-band radars, have been promising (Nygaard and Newcombe 2018), but further development across a range of technologies is necessary to improve data availability, temporal and spatial resolution, and the reliability of observations of quantities of interest related to wind plant performance.

2 Previous Wake Observation Campaigns

Wind energy wake experiments have taken place since the 1970s and can generally be separated into two categories: wind tunnel testing and field testing in the atmosphere. Both approaches are helpful for improved understanding of wind plant atmosphere interactions, but have limitations leading to knowledge gaps to be addressed by AWAKEN. Wind tunnel tests are executed in a controlled environment where flow conditions are well quantified but lack large-scale atmospheric behavior, which can only be addressed through full-scale testing. Early and more recent field tests at smaller than utility scale have provided valuable information about single wake formation and evolution, but lack the physics of larger farms, such as deep array effects and farm blockage. Utility-scale observations have been limited to lower-fidelity observations and an inability to control the driving physical processes. A large-scale field campaign such as AWAKEN will fill many of the knowledge gaps of previous observations by providing higher fidelity measurements across a wider range of scales, particularly at the mesoscale where data are limited.

Researchers have performed wind tunnel tests of single turbines (e.g., Krogstad and Adaramola 2012, some of which include the impacts of atmospheric stability (e.g., Chamorro and Porté-Agel 2010). There have also been studies of scaled full wind farms within wind tunnels (e.g., Cal et al. 2010; Hamilton and Cal 2015). Such studies have been useful for calibration of wind farm models and studies of wind farm layout impacts.

At full scale, measurements of older and smaller turbines have produced valuable data sets for the early wind industry. For example, in a series of observations at Sexberium (Cleijne 1992, 1993), a wind farm containing eighteen 310-kW turbines and three meteorological masts proved useful for model intercomparison and validation (Moriarty et al. 2014). In this data set, tower-based wind speed measurements were taken over a period of 6 months and wake impacts measured as the wind changed directions for multiple rotors and downstream spacings.

Some years later, operational data from full-scale offshore wind farms have been used for better understanding of wind farm flows, such as in the ENDOW project (Rados et al. 2001) and UpWind project (Barthelmie et al. 2011). SCADA data taken from Horns Rev, a wind farm in the Danish North Sea, have been popular and serve as a base validation data set for many industry and research wind farm wake models (Barthelmie et al. 2009; Hansen et al. 2012). The focus on offshore experiments has been because lower turbulence levels result in longer propagation of wakes, which are thought to have greater impact offshore than wakes from land-based wind farms. These validation cases are based on meteorological observations coupled with turbine supervisory control and SCADA data, binned according to wind direction, atmospheric stability, and turbulence.

SCADA data have also been useful to diagnose large-scale interactions between wind plants (Nygaard 2014; Nygaard and Hansen 2016). These studies highlighted the importance of accounting for spatial variations in inflow conditions that must be observed as wind farm size increases. The disadvantages of these offshore data sets are that the atmospheric conditions, such as wind direction and stability, as well as detailed turbine characteristics and operating behavior, are not always observed or reported. In any full-scale test, turbine design information, particularly control system behavior, is often proprietary, making scientific analysis and comparisons to models more difficult.

More high-fidelity observations with direct measurement of wakes using remote sensing are now being used to augment data taken from wind farm SCADA systems. Remote-sensing measurements made in land-based wind farms have provided direct observation of wakes (e.g., Barthelmie et al. 2006; Krishnamurthy et al. 2017, and similar validation studies were also done for land-based scale turbines (Machefaux et al. 2016), including the DOE Crop Wind Energy Experiment campaign, as published in Rajewski et al. 2013; Rajewski et al. 2014; Bodini, Zardi, and Lundquist 2017; Lee and Lundquist 2017; Muñoz-Esparza et al. 2017; Sanchez Gomez and Lundquist 2020. Researchers have also found value in airborne and unmanned aerial vehicle observations that can be used to augment remote sensing (Kocer et al. 2011; Reuder and Jonassen 2012; Wildmann et al. 2014; Lundquist and Bariteau 2015).

Remote-sensing instruments are also valuable in gathering wind field data of an atmospheric boundary layer profile needed for wind energy. For example, there have been field campaigns using remote-sensing instruments in land-based (Rhodes and Lundquist 2013; Klein et al. 2015; Wilczak et al. 2015; Bianco et al. 2017; Lundquist et al. 2017; Mann et al. 2017; Wilczak et al. 2019) and offshore (Pichugina et al. 2012) locations to examine the inflow and thermodynamic conditions within potential wind energy areas. Radiometers used in many of these campaigns have been valuable for determining atmospheric stability, which can substantially influence turbine wake behavior.

New remote-sensing measurements are becoming available that will serve as validation data sets for the near future. New observations with scanning lidars (Bingöl, Mann, and Larsen 2010; Käsler et al. 2010; Trujillo et al. 2011; Aitken et al. 2014b; Iungo and Porté-Agel 2014; Aitken and Lundquist 2014; Banta et al. 2015) are proving valuable; for example, Sandia National Laboratories have the SWiFT facility, and researchers there have performed detailed observations of a single turbine wake using a high-resolution scanning lidar (Herges et al. 2017). Remote-sensing techniques will continue to be important as turbines grow in size, and more traditional meteorological towers will become cost prohibitive at larger heights. New technologies, such as Ka- and X-band radars, are making real-time measurements of entire wind farm interactions and wind farm wakes possible (Hirth et al. 2012; Nygaard and Newcombe 2018). Additionally, using an offshore synthetic aperture radar is a promising method for investigating wind farm wakes (Christiansen and Hasager 2005; Ahsbahs et al. 2018; Jagdish et al. 2018; Hasager et al. 2019). While combining satellite with aircraft observations has been shown to be useful (Emeis et al. 2016), larger scale instrumented aircraft can measure wind speed, wind direction, turbulence, and temperature data within the wind farm or wake from wind farms (Platis et al. 2018; Tucker et al. 2018). In complex terrain, recent observations (Menke et al. 2018; Barthelmie et al. 2018; Wildmann, Kigle, and Gerz 2018) of single-turbine wakes show that local features of the surface topology can have significant effects on wake evolution.

2.1 Future Directions for Observational Technology

The importance of gathering quality data within the atmosphere is not limited to the wind energy community. Researchers in the atmospheric, aeronautical, and even planetary exploration communities are exploring new technologies for atmospheric observation. The quantities of interest for each community may be diverse, but the AWAKEN project and wind energy industry as a whole can benefit from what is being done in other sectors.

A major task within AWAKEN is the development and execution of an instrumentation development roadmap that will advance the state of the art in observational technologies for wind energy applications. The AWAKEN team will organize a group of researchers and industry partners early in the project to create this roadmap. They will build on similar roadmaps developed in other communities, such as recent ones published by the National Academy of Sciences (Board, Sciences, and Medicine 2018) and the National Center for Atmospheric Research (Vömel et al. 2018; Geerts et al. 2018).

Given the growing size of turbines and potential cost of more traditional tower-based observation systems, much focus will be on remote-sensing technologies based on the ground, in the air, and possibly in space. Note that AWAKEN will serve as a starting point for other field campaigns; much of the instrumentation deployed will also be deployed for a future DOE-planned offshore wind farm field experiment in the United States, known as the Wind Forecast Improvement Project 3 (WFIP3). Of particular importance for AWAKEN is gathering observations of the sort of mesoscale impacts on wind turbine wakes that have been observed offshore (e.g., Emeis et al. 2016; Platis et al. 2018), as land-based data are not currently available.

3 Project Objectives and Outcomes

The overall objective of this project is to gather high-fidelity observations of wind turbines and power plants operating in representative atmospheric conditions and to use the data to advance the understanding of wind plant physics. The data gathered as part of this project will also be used to validate computational simulation tools developed under the A2e initiative and by project partners. Advanced instrumentation for microscale observation will be developed and deployed to enable higher-resolution observations beyond present capabilities. Validation studies will be undertaken for both high-performance and engineering models of wind plant operation and design, as well as publicly shared, to ensure dissemination of this work to the wind research and development and industry community. Specific multiyear project objectives are to:

1. Acquire high-quality, high-resolution wind plant wake data sets suitable for the validation of wind turbine and wind plant high-fidelity modeling tools.
2. Demonstrate validation and uncertainty quantification of computational modeling tools developed under the A2e initiative and those of project partners.
3. Advance the fundamental understanding of wind turbine and wind plant physics.
4. Enhance measurement instrumentation and methods as needed to support validation data requirements.
5. Create an international team to observe critical wind plant phenomena and advance wind plant models.
6. Leverage funding opportunities outside of DOE and partnerships to design and collect the highest-quality wind plant observational data set to date.

Advanced observation of wind turbine wakes at utility scale will produce a unique data set for validating high-fidelity models, reduce the uncertainty of a range of wake models, and lead to better overall design and operation of wind plants. This data set will be unique as a U.S. wind energy resource and therefore provide validation data for U.S. developers and manufacturers. By advancing observational technology, researchers will be in a better position to gather observational data with quantified uncertainty at the temporal and spatial resolution required to properly confirm new theories and validate models for wind farm performance. New technology will help enhance the fundamental understanding of wind plant flow physics by research and industry communities alike. Technology transfer will benefit industry by providing more advanced observational tools for understanding the wind resource, wake interactions, and other phenomena of interest that drive wind plant performance and industry profits.

4 Project Tasks

The key tasks for the AWAKEN project are: organize an international team to perform new wind farm observations, leverage funding and partnership opportunities external to DOE, design the experiment, advance the state of the art in microscale observational technologies, execute the experiment, perform useful validation studies to advance wind plant models, and disseminate validation data and publish research results.

4.1 Test Planning

One of the first subtasks in the project will be to finalize the science goals of the AWAKEN field campaign. These goals are aligned with the A2e verification and validation documents (Hills, Maniaci, and Naughton 2015) and presented in detail through phenomena importance and ranking tables (Maniaci 2016). These goals were further prioritized during an international expert meeting held in 2018 to begin defining the motivation and objectives of the new field campaign, which is explained in more detail in Section 5 and Appendix A. The science goals identified by National Renewable Energy Laboratory (NREL) researchers and the international community range from turbulence breakdown of individual wakes and their interactions with downstream turbines to large-scale wind plants and their mesoscale interactions with the atmosphere and neighboring wind plants. Figure 1 provides a view of the rankings of important phenomena to be studied in the AWAKEN field campaign, according to expert meeting breakout groups. Research topic areas listed on the left side of the graph were deemed most important by all the groups. The final set of science goals will synthesize items from this list into a few overarching topics, many of which can be observed simultaneously using similar instrumentation. An overview of potential instrumentation and their link to science goals is provided in Appendix A.1.

As for site selection, the site must first have representative physical behavior commensurate with the science goals. The site will be located somewhere in the central U.S., where the majority of wind farms are located. The willingness of both the wind farm owner and landowners to share access to the wind farm turbines, as well as the openness of the turbine manufacturer to share turbine data, will all be considered for the selection of the site. Researchers will work with local landowners to identify locations for instrument placement and begin land lease procurement, which is often a long lead-time item in field studies.

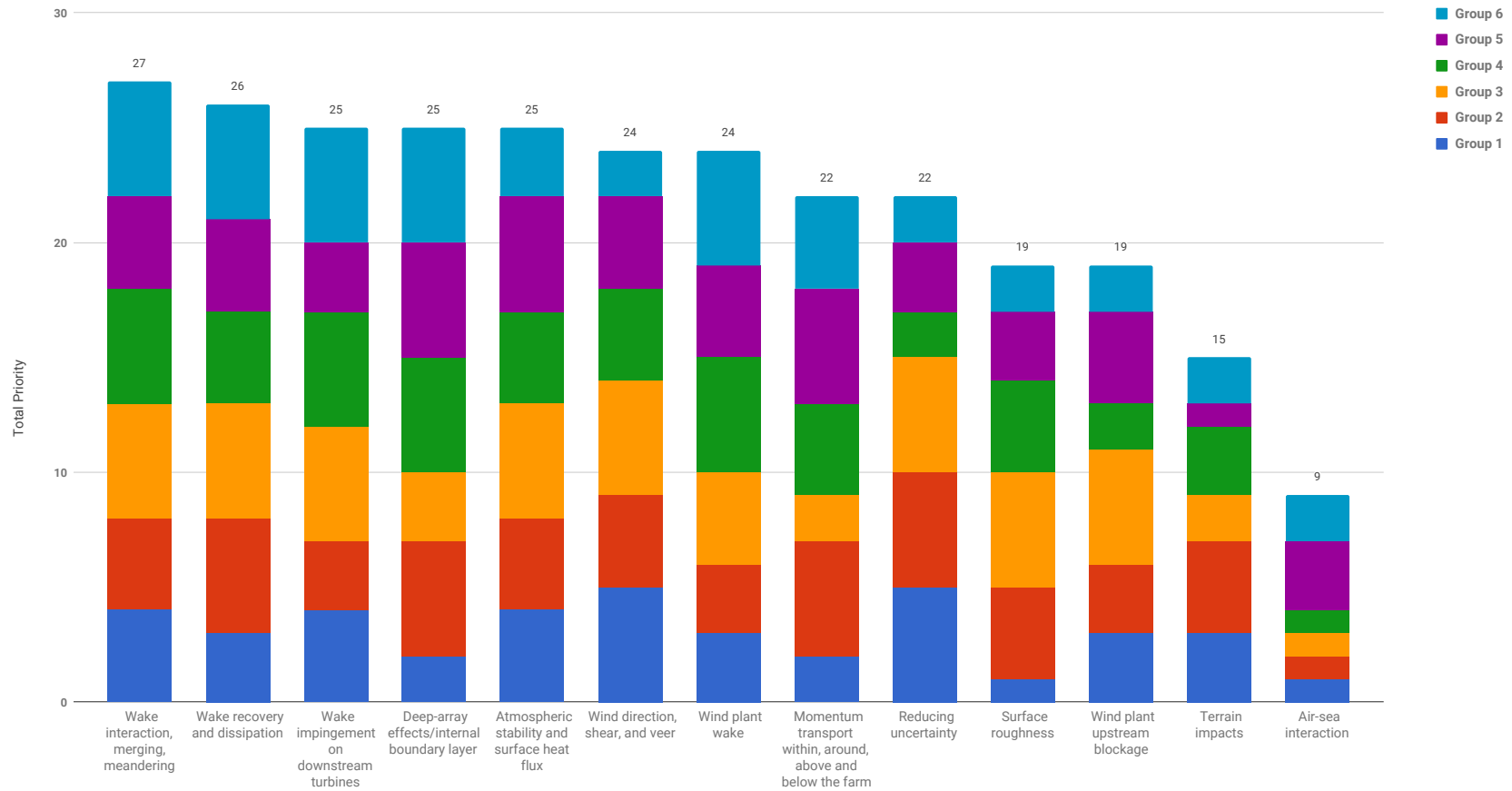


Figure 1. Prioritization of science goals from expert meeting feedback sessions. Color bars are ranking of individual feedback groups. A larger bar indicates a higher priority score. Goals on left hand side of chart were highest priority for all groups combined.

4.2 Partnership Engagement

Because the wind farms and turbines used in the AWAKEN experiment will not be DOE-owned, partnerships with industry are critical. With work and research partnerships comes the need for agreements on specific issues (e.g., site access and data sharing) that may require considerable negotiation between project partners. A fully open data set that is publicly available would be ideal for DOE goals, but certain data may need to be protected to ensure participation by industry members. Often, protections such as normalizing data and granting editorial power on publications to industry partners are useful compromises that can strengthen partnerships between collaborating entities and open paths forward for the project.

DOE laboratories have experience in complex partnership arrangements and commercial data sharing through the Wind Forecasting Improvement projects (Wilczak et al. 2015; Shaw et al. 2019; Wilczak et al. 2019), which can be applied to the AWAKEN project. This includes data sharing with researchers before, during, and after the field campaigns as well as commercially sensitive data protected in the A2e Data Archive and Portal (DAP) (Sivaraman et al. 2014).

Following the example of the New European Wind Atlas Perdigão experiment (Mann et al. 2017; Fernando et al. 2019), external funding sources will be pursued to leverage existing DOE funds and enable the largest possible field and validation campaign. The New European Wind Atlas consortium consisted mainly of European entities, but also included three teams funded by the U.S. National Science Foundation. Two National-Science-Foundation-funded teams were consortia of multiple universities, and the other was the National Center for Atmospheric Research's Earth Observing Laboratory, all of which added considerably to the instrumentation suite available for the project. While the key science goals of AWAKEN will be achieved by the core DOE-funded team, the acquisition of external funding will enhance the team and value of the overall data set. Potential sources for AWAKEN within the United States include government agencies like the National Science Foundation, National Oceanic and Atmospheric Administration, and U.S. Department of Interior, who may be willing to fund their traditional partner institutions. The team will also investigate international funding cost sharing from industry in the form of staff time and access to equipment and instrumentation.

4.3 Microscale Instrumentation Development

The current state of the art for instrumentation to observe complex wind farm flows is generally of much lower fidelity than the current range of simulation tools in terms of temporal and spatial resolution. Current instrumentation can provide real-time data with higher temporal frequency but with lower spatial resolution. To cover spatial variability of a wind field within the atmospheric boundary layer and wind farm, the accuracy of the measurements needs to be compromised. Therefore, validation of numerical models based on the field observation data is not at the required or targeted fidelity, and the quality of the assessment of the numerical models is often obstructed by the limitations of measurements. To narrow the gap between observation and simulation and improve confidence in validation exercises, researchers involved in this task will seek to develop next-generation instrumentation that will improve the spatial and temporal fidelity of microscale observations. Researchers will also quantify the uncertainty of experimental data and the propagation of that uncertainty to the quantities of interest.

The national laboratories will develop and execute an advanced wind plant observation instrumentation development strategy. The strategy will begin with a summary of the state of the art of remote-sensing technology for wind plant applications, which begins with an instrumentation atlas (Lundquist et al. 2019) and will be augmented through a meeting of international experts. The outcome of the experts' meeting will be a document to detail and compare currently available technology and make recommendations and estimate potential costs for the most promising technologies to develop. During this meeting, prioritization of advanced instrumentation will be informed by the A2e high-fidelity modeling (HFM) verification and validation (V&V) roadmap (Hills, Maniaci, and Naughton 2015; Maniaci and Naughton 2019) and AWAKEN science goals (see Appendix A). Potential technologies of interest include X-band radars, acoustic tomography, the Sandia Wake Imaging System (Herges et al. 2016), unmanned aerial vehicle swarms, multistatic lidar, and so on. Using this document as a basis, an International Energy Agency task on remote-sensing technology will be created to allow for international collaboration on advanced instrumentation during the

period of the project. Starting with the feedback from the experts' meeting, national laboratory researchers will conduct observing system studies experiments using numerical simulations of different technologies to better understand their ability to measure wind plant quantities of interest.

Results from these studies will highlight the temporal and spatial resolutions possible across a range of technologies for the highest-priority quantities of interest. From these studies, laboratory researchers will identify promising technologies for future development. Assuming technologies are at a sufficient technology readiness level, laboratory researchers will collaborate with private industry to help develop and validate the performance of early prototypes in the field. Prototype testing will occur at DOE field testing sites with atmospheric observation capabilities, such as NREL's Flatirons Campus, SWiFT, and DOE Atmospheric Radiation Measurement (ARM) sites. Testing may also occur at operational wind farms as needed for validation. Finally, new technologies will be compared with current industrial and research technologies to help quantify the improvement in observational capability.

An important task will be the creation of an instrumentation development roadmap, starting from the current state of the art and proceeding through the end of the AWAKEN project. In 2019, an instrumentation atlas (Lundquist et al. 2019) was developed that provided a current state of the art of microscale instrumentation and measurement capability gaps. The instrumentation atlas has been updated and ported to the AWAKEN wiki website (<https://openei.org/wiki/AWAKEN>), where it can be maintained throughout the AWAKEN project. This summary will be useful for providing current capabilities of existing observational equipment as a baseline for improvements made within this task. The primary purpose of the instruments to be developed will be those to provide high-resolution validation data within AWAKEN following the A2e HFM V&V roadmap. However, we envision that such technology will also be useful for industry in advancing their observational methods. Therefore, this subtask will involve close collaboration with industry remote-sensing manufacturers and others. The roadmap will initially be written by laboratory researchers but then distributed to outside partners and finalized after feedback from an expert elicitation meeting in the beginning of 2020. The roadmap will highlight the potential capabilities of new instruments, matching observational requirements for AWAKEN validation goals and projected timelines and funding requirements for development. Researchers will modify the roadmap during the project as more accurate performance estimates and realistic development timelines become available, and the AWAKEN experimental design becomes clearer.

During expert elicitation meetings, promising technologies will be identified that show the greatest promise for investment in further development. The different technologies, depending on their level of maturity and needs for future growth, will first be modeled in high-fidelity simulation tools such as A2e-developed Nalu-Wind (Lawson et al. 2019). Assuming these simulations show promise and significant potential impact for better microscale observation, prototypes will be built and tested in a laboratory setting before being deployed and validated in a field location. Go/no-go decisions for each technology will be made prior to prototyping based on the potential ability to fill measurement gaps and estimated development timeline. Researchers will ensure technology testing can be completed within the project time window and, if not available for the AWAKEN experiment, be available for future observational campaigns. Facilities at the NREL Flatirons Campus, Sandia, SWiFT, and DOE ARM sites will be used for development and testing of new instrumentation. Depending on the pace of development, these new technologies could also be deployed during the actual AWAKEN test.

4.4 Experimental Design

A major task following site selection is the planning of the experiment itself. Planning will involve developing multiple timelines, incorporating the availability and applicability of different sorts of instrumentation, and understanding project partner constraints. Logistical considerations, such as instrument power supply, spare parts, and estimated repair times, will also be included. We envision a field campaign of at least 18 months to capture seasonal variability of the atmosphere. Such a long field campaign can be very challenging, and lessons learned regarding instrumentation monitoring and support, real-time data visualization, and so on, from the 18-month Wind Forecast Improvement Project 2 and Perdigo field campaigns will be incorporated into the planning. The range of instruments to be deployed in the field will be simulated with high-fidelity models, and the overall test plan will be optimized to gather the best possible data set with the available instruments based on previous work to reduce the measurement errors caused by instrument coordination or their placement (Stawiarski et al. 2013; Simley et al. 2016; Choukulkar et al. 2017; Deb-

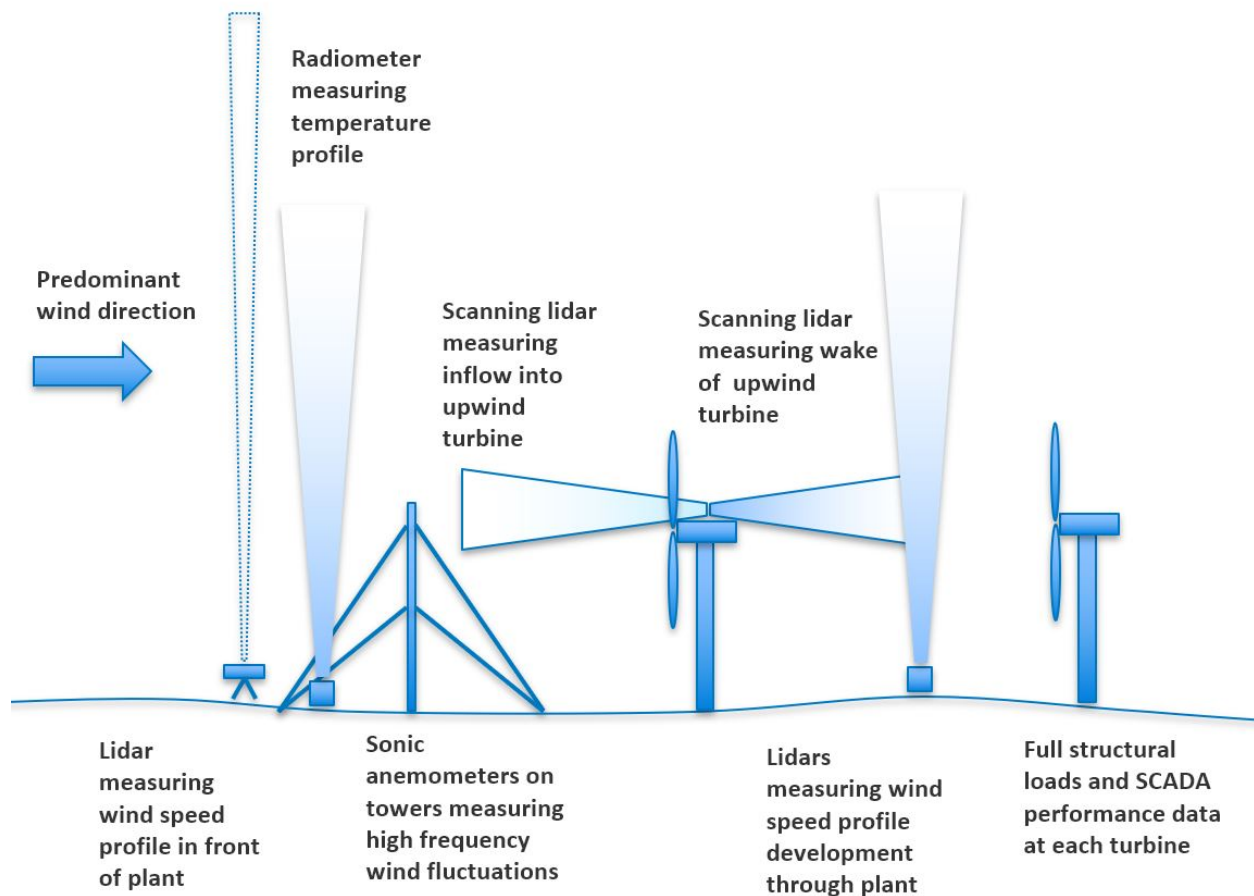


Figure 2. Examples of instrumentation for the AWAKEN project

nath et al. 2017; Newsom et al. 2017; Peña and Mann 2019). The combination of instruments with different spatial and temporal resolutions can modify measurement error. Therefore, the instrument setup and measurement strategy will be tested and optimized to reduce the error within the measurements prior to and during the experiment. Figure 2 provides an example of some instrumentation that may be deployed and its relative location to wind turbines.

Using the instrumentation atlas, science goals, and site properties, researchers will develop and prioritize a list of instrumentation needed for the campaign. See Appendix A.1 for an initial matching of potential instruments to science goals. A portion of the project budget will fund purchases and rental of critical systems. Partnerships will augment DOE funding with other participants providing their own equipment for microscale measurement. As stated in Section 4.2, these externally funded partnerships will not be required to achieve the key AWAKEN science goals but will increase the amount and value of the overall data gathered. Researchers will work with partners to develop timelines for deployment. In some cases, such as with the National Center for Atmospheric Research Earth Observing Laboratory and DOE ARM programs, team members will submit proposals for usage of the institutions' equipment over specific stages of the field test. These proposals require significant lead time and have been initiated. Another consideration in the selection process is the time period each instrument will be deployed; some instruments will be observing complex flow for the duration of an 18-month test, whereas others will be deployed for shorter durations of 6 months or less.

High-fidelity simulation tools such as Nalu-Wind will be used to identify the errors associated with a particular instrument and its applications to achieve the related science goals. Such observing system simulation experiments will provide researchers with an idea of the types of data the AWAKEN experiment will produce and the advantages and disadvantages of different types of instrumentation. The experiments will also serve as the basis for the first validation

studies. A prerequisite for such studies is representations of each observational technology within HFM codes. Models for profiling lidars, scanning lidars, and Ka/X-band radar are currently in development. Other technologies will be added as needed. Researchers will use these tools to inform the sensor layout of the AWAKEN experiment during the different phases of the campaign.

4.5 Experimental Execution

Execution of the AWAKEN field campaign at minimum will occur over a period of 18 months to ensure capture of a full set of seasonal variations with some overlap to identify a wide range of atmospheric conditions at a specific site. We anticipate that not all equipment will be available during the entire campaign, particularly those from externally funded collaborators and those instruments that require significant labor to operate. However, we will seek to maximize the amount of data gathered to ensure operation of a critical mass of instruments during the different phases of the campaign.

A month prior to test execution, researchers will begin to deploy the instrumentation at the test site. Instruments will initially be deployed according to the experimental design studies, and adjustments will be made to meet real-world constraints (e.g., insufficient power available, terrain or access complications, and so on). All instruments will be calibrated and ready to use prior to the first simultaneous day of testing.

Long-term observations will be recorded over the duration of the test. Researchers will seek to leverage existing instrumentation in the area, such as locally owned meteorological towers or automated surface observing system stations or state-supported mesonets (Brock et al. 1995; Schroeder et al. 2005) (or DOE ARM facilities [Sisterson et al. 2016]), and incorporate their data streams into the overall data set. These existing data sets will likely be most useful for observing larger-scale physical phenomena. DOE-owned/rented instrumentation, such as meteorological towers, vertically profiling lidars, some scanning lidars, sodars, and radiosonde launches, will be deployed and kept operational for the duration of the experiment. Time and budget will be planned for instrumentation maintenance, data handling, and quality control. Data will be uploaded to the A2e DAP (Sivaraman et al. 2014) in a timely, reasonable manner.

Researchers will perform more highly detailed measurements over short targeted time periods using instrumentation that cannot be easily deployed over longer periods. As possible, data will be made available in real-time to assist with episodic intensive measurement periods and deployments of airborne instrumentation. Examples include unmanned aerial vehicles for measuring turbine wakes, aircraft to measure wind plant impacts, and mobile radar systems that have short deployment windows. The actual deployment of each of these instruments is highly dependent on the instrument itself and the data gathered. Researchers using instruments that are best for observational campaigns lasting less than a month will plan for multiple deployments during the test to capture some seasonal variability and provide repeatability of observations.

4.6 Data Analysis and Model Validation and Archival

Model validation is one of the key goals of the AWAKEN project, and while the primary focus is on high-fidelity simulation tools such as Nalu-Wind, other models will be used in a multifidelity validation approach. The process for this validation is being developed in a related verification & validation and uncertainty quantification project being led by Sandia researchers and currently being applied in other A2e tasks. Many researchers overlap between the AWAKEN project and the verification and validation/uncertainty quantification project and thus will be well educated as to the best practice for validation using observations from the test. The process of validation requires careful processing, analysis, and understanding of observations, which will lead to new insights of wind plant behavior and driving physical phenomena.

It is important that during execution of the AWAKEN field campaign, researchers perform validation tests to ensure that the data being gathered are valuable. These iterative tests provide feedback to the researchers in the field, who may have time to adjust the observational campaign and improve validation results during the test. Prior to gathering and analyzing data, team members will identify key quantities of interest on which to focus initial validation studies

based on the A2e V&V roadmap. Validation metrics for simulation tools will also be devised to measure overall performance of the simulation tools, identify areas of improvement, and help steer ongoing measurements in the field.

International Energy Agency Task 31, also known as Wakebench (Sanz Rodrigo et al. 2017), is a critical venue for validation exercises with a large representative group of researchers interested in wind farm model validation. The group has been active for 6 years and is a well-established international working group. Various new wind plant model benchmarks from the field campaign will be created and led by AWAKEN team members. International researchers will use their own models following the prescribed validation process, beginning with a blind comparison between observations and simulations, followed by a gradual release of observational results. The iterative validation process provides insights into which models perform best under a range of conditions. Guidelines for "best practices" for each of the different models will then be developed, following the recommendations produced in the validation study. The principal investigator of AWAKEN is a co-lead of Wakebench and will ensure seamless interaction between the international efforts.

All observations will be uploaded to the A2e DAP on an ongoing basis during the AWAKEN test, including a capability for real-time monitoring of instrument performance. A dedicated web page for the AWAKEN field campaign will be created on the DAP site. AWAKEN researchers have experience with archiving with DAP and uploading data in near real time, so the process is well vetted. The Wind Forecast Improvement Project 2 18-month experiment highlighted the importance of real-time instrument monitoring and local technical support to quickly identify and repair instrumentation problems. During the long-term observational campaign, weekly weather and turbine event discussions will enable the creation of an event log that will also be archived at the DAP to identify notable events of interest to the modeling community. An event discussion coordinator will be identified early in the project to lead regular meetings during the field campaign. Researchers will work with the DAP team to ensure commonality of data formats that will make it easier for future data users to analyze. Both raw data from observations and processed data from analysis will be uploaded and maintained. As validation studies proceed, researchers will upload simulation results of interest for the wider community. Data storage limits prevent storage of all simulations, and criteria will need to be developed to determine what data will be kept over what time periods. Analysis scripts used by team members will be uploaded to enable reproducible research results and easier continued analysis after the AWAKEN project is complete. In general, researchers will strive to follow FAIR (Findable, Accessible, Interoperable, and Reusable) data principles (Wilkinson et al. 2016) to ensure lasting value from the data gathered.

5 Expert Elicitation Meeting

The first AWAKEN meeting to gauge interest in collaborative wind farm field observations and to begin the formation of a central repository for past experiences was convened by NREL at the University of Colorado in Boulder, Colorado, March 21, 2018. The agenda for the meeting can be found in Appendix C. More than 50 participants attended the meeting, representing the interests of academics, wind energy industry professionals, government agencies, and national laboratories. The agenda for the meeting is found in Appendix C, and names of the participants and their affiliations are listed in Appendix D. Throughout the meeting, researchers offered their perspectives on past experience in utility-scale wind farm observation campaigns and provided insights on lessons learned about international collaborative work and emerging technologies and instrumentation; they also contributed to the prioritization of scientific objectives of the forthcoming study.

5.1 Key Points by Speakers

Some of the key points emphasized by the speakers include the following:

- Models, physics, experiments, and applications must all work together. Improving one benefits each of the other elements, as described by the "virtuous cycle" introduced by David Maniaci from Sandia and repeated by several other speakers. The importance of model validation cannot be overstated. Validation needs to outstrip observational capabilities, and remote-sensing technology is improving, but not as fast a model's technology. Therefore, comparisons between models and data may be most effective when reconciled against performance or other averaged turbine data.
- Multiple forms of observations are important. Co-locating and correlating observations reduce uncertainty and increase reliability. Duplicate measurements are important for redundancy, reduction of uncertainty, and correlated observations. Long-term turbine SCADA data are necessary to get a complete picture of the operation of a wind farm. SCADA data include using turbines as anemometers through power output. Turbine anemometer and unsteady responses correlate to turbulence from performance and loads observations. Common data formats and time stamping across observational platforms are vital for consistent access to data and method development.
- Long-term project planning and careful partnership engagement are essential. Three to four years' planning before a campaign begins might be necessary. The success of the project will depend on long-term relationships. Landowner/wind farm owner/operator relationships are crucial to the success of a project. Service relationships with instrument manufacturers are important during long campaigns.
- The added value of collaboration in large projects is attractive to a variety of potential partners. There are many funding sources that could be leveraged to benefit the group effort. Within DOE, collaboration frequently occurs between laboratories and sometimes across programs. One question discussed was: How will other funding agencies interact with DOE? Collaboration may be difficult because of the proposed timeline alone, and establishing funding could potentially require years of planning. Funding collaborations between sources will be important if the scope will be on the order of the Perdigo campaign.

5.2 Feedback Sessions

During the meeting, feedback from the attendees was solicited through three short surveys completed in group breakout sessions, and results were tabulated into a spreadsheet. The meeting attendees were divided into working groups of 8–10 people, with representatives from each sector of the wind energy research community. Each survey was designed to collect input on the relevance of the supplied science goals, attendees' respective priority of study, and what should be added or removed from the preliminary test plan. Below, the feedback solicited from the small work groups during the meeting is summarized. The aggregated data from each of the feedback sessions have been consolidated into a summary that is located in Appendix B.

5.2.1 Which science goals can be removed or combined?

Although most of the small work groups suggested some sort of reorganization and/or combination of the science goals (Appendix A and priorities, a single recommended hierarchy or structure did not emerge from the feedback suggested by the groups. Rather, most groups suggested identifying the two or three overarching topic areas for the campaign, under which all other science questions were nested within.

Some other comments made about the science goals were:

- While not a science goal per se, instrumentation and experimental design should be given equal standing in terms of planning and consideration. Questions that should be considered carefully are: How will measurements be made to address science goals? How well can the quantities of interest be measured? Does an optimal arrangement of sensors exist? Can we reach it?
- Add depth to the large-scale phenomena/wind farm effects science goal. Mesoscale effects on a wind farm are important. To capture these effects, ensure instruments are movable and dispersed instead of localized at a fixed point. Expand the instrumentation plan to include observations of mesoscale recirculation effects. Also, some observations should seek to measure the correlation between large coherent structures' effects on wind turbines and structural fatigue loads.
- Additional thinking is needed around terrain impacts and how boundary conditions affect science goals. Be sure to include observations that can capture the homogeneity (or heterogeneity) of the surface (trees, roughness, terrain, and so on). It is useful to start with flat terrain to eliminate areas of uncertainty. It is also easy to start with areas or data sets with consistency of wind direction. Layout spacing is similar; large idealized wind farms exist on flat terrain, but not very many are placed on regular gridded layouts.
- How do the science goals tie into the desired outcomes of the campaign? Consider which goals are achievable in terms of observations and for model validation. Should goals be tuned to match needs for model development or validation? What data do wind farm control designs need?
- More detail could be added to the inflow and operating conditions science goals. Inflow and atmospheric conditions are equally important as measuring wakes: shear, veer, wind direction, wind direction variability, speed, turbulence, and stability. If turbine structural loads are important, then so are turbulence and variations in flow parameters along the blade. Can the freestream wind speed be measured? It is important to measure the flow around the wind farm, in addition to inside it. Lastly, atmospheric stability has a big impact on the ability to control turbine wakes. For example, in highly turbulent/unstable conditions, flow wakes will be difficult to control, but also create less energy loss due to faster wake dissipation.
- Selection of instrumentation is a priority. Try to get wind direction variability from SCADA data immediately to begin analysis. Use the Richardson number or Obukhov length for stability; use temperature profile from the meteorological mast or the sonic anemometer close to the ground. The preferred measurement depends on the surface homogeneity. Some planning is required for dissipation measurements and how best to make measurements with tethered lift systems and/or hot-wire anemometry. Strongly consider how to best instrument blades with strain measurements along blades, accelerometers, and so on.

5.2.2 Instrumentation

The next question posed of the breakout groups was: What instrumentation should be added to the testing plan and why? Participants suggested a substantial list of instrumentation they would like to see deployed and used during the testing campaign. In addition to a list of instruments, many attendees offered recommendations on specific models of sensors and measurement devices for a wide range of reasons. Next is a brief summary of recommendations. Additional suggestions and their relation to the science goals are discussed further in Appendix A.1.

- Meteorological masts and in-situ point measurements
 - Sonic anemometers

- Pressure-temperature-humidity
- Remote sensing
 - Sodar and radar radio acoustic sounding system)
 - Ka-band and X-band radar
 - A diversity of lidars (e.g., ground-based, nacelle-mounted, scanners, profilers)
 - Field-particle-image-velocimetry-type systems
 - Satellite imaging
- Other instruments
 - Radiosondes and sounding systems (difficult with the Federal Aviation Administration; labor-intensive)
 - Eddy covariance (surface flux stations) both upwind and throughout the wind plant
 - Ceilometer for planetary boundary layer heights
 - SCADA (performance/operational data, loads)
 - Upwelling/downwelling radiation sensors
 - Sensors for surface properties (e.g. soil moisture/temperature, surface albedo, etc)
 - Tethered lifting systems
 - Airborne measurement systems and unmanned aerial vehicles
- Other advice
 - Plan for backup units, (re)calibration of instruments, maintenance/downtime, data formatting, and time synchronization.

5.2.3 Recommendations for Test Site

The breakout groups were asked about a potential site for the AWAKEN campaign. Most groups recommended sites that have a wide range of atmospheric conditions and constrained terrain complexity. It was also recommended that the potential test site be one that has already been the subject of previous research experience, as forging relationships with landowners and wind farm operators can be a significant hurdle in any field campaign. A short list of potential sites includes the following.

- Wind Forecast Improvement Project site (Columbia River Gorge): too complex terrain for this test, but instrumentation already exist
- ARM climate research facilities
- Story County, Iowa: there are existing, maintained tall towers, and the site of the successful CWEX campaigns
- North of Mason City, Iowa: there are three farms close together
- NextEra pre/postconstruction test site in the Midwest: data sharing may be sensitive
- Texas wind farms (Roscoe, Loraine, Champion).

5.2.4 *Additional Thoughts on Test Planning*

Lastly, breakout groups were asked about preliminary thoughts on the initial AWAKEN test plan. Potential testing plans will be compiled in an open-source test planning document, which will soon be open to public scoping. Input requested included specific strategies that would be beneficial to the AWAKEN project as well as potential locations for the campaign, instrumentation to be considered, and wind turbine models that would be good test candidates. The main suggested additions to the testing document fall into the categories of:

- Preassessment
- Flowfield measurements
- Turbine operational data/site characterization
- Logistics (points of contact, responsible parties, scheduling, and so on)
- Concurrent modeling.

Please refer to the aggregated results in Appendix B for a complete list of suggestions.

6 Next Steps

With the vision of the AWAKEN project summarized in this document, the next steps are execution of the tasks outlined earlier and according to a timeline described in Section 7. The initial year of the project will focus on partnership management, such as working with interested parties on agreements for wind farm and data access. There will be considerable time spent working with research partners submitting proposals to augment DOE funding to increase the overall scope and potential impact of the project. Site selection will be an early goal as well, once strong partnerships are established. While negotiations proceed, instrument selection can proceed concurrently, identifying key instruments and matching them to science goals. The identification of instruments will also include a gaps analysis of the current state of the art and formulation of an instrumentation development roadmap. This roadmap will be executed throughout the AWAKEN project. Once a site is selected, detailed simulation studies will be done to design the experiment for optimal observation of phenomena related to the science goals. Once the design is complete, instruments will be acquired, then deployed and calibrated, and the observational campaign will begin. Throughout the campaign, validation studies against models will be executed and the observation plan adjusted accordingly. Validation studies will continue past the completion of the field observations until the end of the project. All data and some simulations will be uploaded to the A2e DAP for further use by the wind energy community.

As part of the ongoing AWAKEN planning efforts, organizers at NREL will continue to solicit feedback from the wind energy community as a whole through monthly update meetings and sporadic expert meetings. Given the early stage of the campaign, participants are encouraged to communicate with any potential participants or collaborators and to share the public AWAKEN-related literature.

7 Timeline and Milestones

Milestones and events key to the success of the AWAKEN project are described in the AWAKEN timeline, reproduced below. Note that the proposed timeline here will develop as the number of participants increases, the scope of the campaign comes into focus, and opportunities arise for funding and collaboration. Meetings and working group sessions will be added to the timeline as they are scheduled.

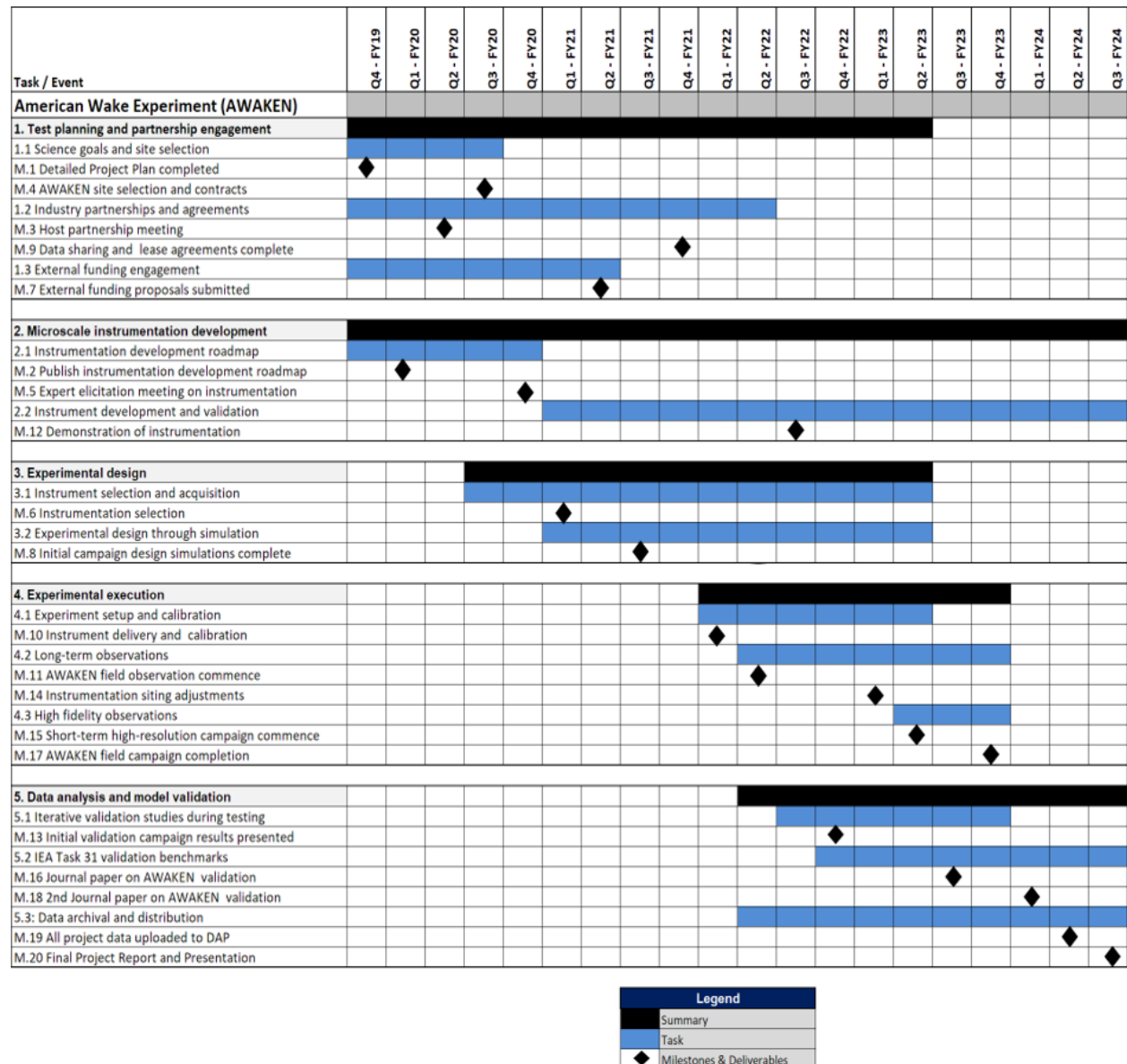


Figure 3. Timeline and milestones for AWAKEN project, as of publication

References

- Ahsbahs, T. T., M. Badger, P. Volker, K. S. Hansen, and C. B. Hasager. 2018. "Applications of satellite winds for the offshore wind farm site Anholt." *Wind Energy Science* 3 (2): 573–588.
- Aitken, M. L., and J. K. Lundquist. 2014. "Utility-scale wind turbine wake characterization using nacelle-based long-range scanning lidar." *Journal of Atmospheric and Oceanic Technology* 31 (7): 1529–1539.
- Aitken, M. L., R. M. Banta, Y. L. Pichugina, and J. K. Lundquist. 2014a. "Quantifying wind turbine wake characteristics from scanning remote sensor data." *Journal of Atmospheric and Oceanic Technology* 31 (4): 765–787.
- . 2014b. "Quantifying wind turbine wake characteristics from scanning remote sensor data." *Journal of Atmospheric and Oceanic Technology* 31 (4): 765–787.
- Banta, R. M., Y. L. Pichugina, W. A. Brewer, J. K. Lundquist, N. D. Kelley, S. P. Sandberg, R. J. Alvarez II, R. M. Hardesty, and A. M. Weickmann. 2015. "3D Volumetric Analysis of Wind Turbine Wake Properties in the Atmosphere Using High-Resolution Doppler Lidar." *Journal of Atmospheric and Oceanic Technology* 32 (5): 904–914. doi:10.1175/JTECH-D-14-00078.1.
- Barthelmie, R. J., G. Larsen, S. Frandsen, L. Folkerts, K. Rados, S. Pryor, B. Lange, and G. Schepers. 2006. "Comparison of wake model simulations with offshore wind turbine wake profiles measured by sodar." *Journal of atmospheric and oceanic technology* 23 (7): 888–901.
- Barthelmie, R. J., K. S. Hansen, S. T. Frandsen, O. Rathmann, J. Schepers, W. Schlez, J. Phillips, K. Rados, A. Zervos, E. Politis, et al. 2009. "Modelling and measuring flow and wind turbine wakes in large wind farms offshore." *Wind Energy* 12 (5): 431–444.
- Barthelmie, R. J., S. C. Pryor, S. T. Frandsen, K. S. Hansen, J. Schepers, K. Rados, W. Schlez, A. Neubert, L. Jensen, and S. Neckelmann. 2010. "Quantifying the impact of wind turbine wakes on power output at offshore wind farms." *Journal of Atmospheric and Oceanic Technology* 27 (8): 1302–1317.
- Barthelmie, R. J., et al. 2011. *Flow and wakes in large wind farms: Final report for UpWind WP8*. Tech. rep. Risø-R-1765(EN). Danmarks Tekniske Universitet, Risø Nationallaboratoriet for Bæredygtig Energi.
- Barthelmie, R., S. Pryor, N. Wildmann, and R. Menke. 2018. "Wind turbine wake characterization in complex terrain via integrated Doppler lidar data from the Perdigão experiment." In *Journal of Physics: Conference Series*, 1037:052022. 5. IOP Publishing.
- Bianco, L., K. Friedrich, J. M. Wilczak, D. Hazen, D. Wolfe, R. Delgado, S. P. Oncley, and J. K. Lundquist. 2017. "Assessing the accuracy of microwave radiometers and radio acoustic sounding systems for wind energy applications." *Atmospheric Measurement Techniques* 10 (5): 1707.
- Bingöl, F., J. Mann, and G. C. Larsen. 2010. "Light detection and ranging measurements of wake dynamics part I: one-dimensional scanning." *Wind Energy* 13 (1): 51–61.
- Board, O. S., E. National Academies of Sciences, Medicine, et al. 2018. *The Future of Atmospheric Boundary Layer Observing, Understanding, and Modeling: Proceedings of a Workshop*. National Academies Press.
- Bodini, N., D. Zardi, and J. K. Lundquist. 2017. "Three-dimensional structure of wind turbine wakes as measured by scanning lidar." *Atmospheric Measurement Techniques* 10 (8).
- Brock, F. V., K. C. Crawford, R. L. Elliott, G. W. Cuperus, S. J. Stadler, H. L. Johnson, and M. D. Eilts. 1995. "The Oklahoma Mesonet: a technical overview." *Journal of Atmospheric and Oceanic Technology* 12 (1): 5–19.
- Bromm, M., A. Rott, H. Beck, L. Vollmer, G. Steinfeld, and M. KÄijhn. 2018. "Field investigation on the influence of yaw misalignment on the propagation of wind turbine wakes." *Wind Energy* 21 (11): 1011–1028. doi:10.1002/we.2210.
- Cal, R. B., J. Lebrón, L. Castillo, H. S. Kang, and C. Meneveau. 2010. "Experimental study of the horizontally averaged flow structure in a model wind-turbine array boundary layer." *Journal of Renewable and Sustainable Energy* 2 (1): 013106.
- Chamorro, L. P., and F. Porté-Agel. 2010. "Effects of thermal stability and incoming boundary-layer flow characteristics on wind-turbine wakes: a wind-tunnel study." *Boundary-layer meteorology* 136 (3): 515–533.
- Choukulkar, A., et al. 2017. "Evaluation of single and multiple Doppler lidar techniques to measure complex flow during the XPIA field campaign." *Atmospheric Measurement Techniques* 10 (1): 247–264. doi:10.5194/amt-10-247-2017. <https://www.atmos-meas-tech.net/10/247/2017/>.
- Christiansen, M. B., and C. B. Hasager. 2005. "Wake effects of large offshore wind farms identified from satellite SAR." *Remote Sensing of Environment* 98 (2-3): 251–268.

- Cleijne, J. 1992. *Results of Sexbierum Wind Farm; Double Measurements*. Tech. rep. TNO Report 92-388. TNO (Netherlands).
- . 1993. *Results of Sexbierum Wind Farm; Single Wake Measurements*. Tech. rep. TNO Report 93-082. TNO (Netherlands).
- Clifton, A., A. Smith, and M. Fields. 2016. *Wind plant preconstruction energy estimates. current practice and opportunities*. Tech. rep. NREL/TP-5000-64735. National Renewable Energy Lab. (NREL), Golden, CO (United States).
- Cline, J, S. Haupt, and W. Shaw. 2017. “Meteorology Research in DOE’s Atmosphere to Electrons (A2e) Program.” In *AGU Fall Meeting Abstracts*.
- Debnath, M., G. V. Iungo, R. Ashton, W. A. Brewer, A. Choukulkar, R. Delgado, J. K. Lundquist, W. J. Shaw, J. M. Wilczak, and D. Wolfe. 2017. “Vertical profiles of the 3-D wind velocity retrieved from multiple wind lidars performing triple range-height-indicator scans.” *Atmospheric Measurement Techniques* 10 (2): 431–444. doi:10.5194/amt-10-431-2017.
- Doubrawa, P., M. Debnath, P. J. Moriarty, E. Branlard, T. Herges, D. Maniaci, and B. Naughton. 2019. “Benchmarks for model validation based on lidar wake measurements.” In *Journal of Physics: Conference Series*, 1256:012024. 1. IOP Publishing.
- Emeis, S., S. Siedersleben, A. Lampert, A. Platis, J. Bange, B. Djath, J. Schulz-Stellenfleth, and T. Neumann. 2016. “Exploring the wakes of large offshore wind farms.” In *Journal of Physics: Conference Series*, 753:092014. 9. IOP Publishing.
- Fernando, H., J. Mann, J. Palma, J. Lundquist, R. J. Barthelmie, M. Belo-Pereira, W. Brown, F. Chow, T. Gerz, C. Hocut, et al. 2019. “The Perdigao: Peering into microscale details of mountain winds.” *Bulletin of the American Meteorological Society* 100 (5): 799–819.
- Fleming, P., et al. 2020. “Continued Results from a Field Campaign of Wake Steering Applied at a Commercial Wind Farm: Part 2.” *Wind Energy Science Discussions* 2020:1–24. doi:10.5194/wes-2019-104. <https://www.wind-energy-sci-discuss.net/wes-2019-104/>.
- Fleming, P., J. King, K. Dykes, E. Simley, J. Roadman, A. Scholbrock, P. Murphy, J. K. Lundquist, P. Moriarty, K. Fleming, et al. 2019. “Initial results from a field campaign of wake steering applied at a commercial wind farm—Part 1.” *Wind Energy Science* 4 (2): 273–285.
- Geerts, B., D. J. Raymond, V. Grubišić, C. A. Davis, M. C. Barth, A. Detwiler, P. M. Klein, W.-C. Lee, P. M. Markowski, G. L. Mullendore, et al. 2018. “Recommendations for in situ and remote sensing capabilities in atmospheric convection and turbulence.” *Bulletin of the American Meteorological Society* 99 (12): 2463–2470.
- Hamilton, N., and R. B. Cal. 2015. “Anisotropy of the Reynolds stress tensor in the wakes of wind turbine arrays in Cartesian arrangements with counter-rotating rotors.” *Physics of Fluids* 27 (1): 015102.
- Hammond, S. W., M. A. Sprague, D. Womble, and M. Barone. 2015. *A2e High Fidelity Modeling: Strategic Planning Meetings*. Tech. rep. NREL/TP-2C00-64697. National Renewable Energy Lab. (NREL), Golden, CO (United States).
- Hansen, K. S., R. J. Barthelmie, L. E. Jensen, and A. Sommer. 2012. “The impact of turbulence intensity and atmospheric stability on power deficits due to wind turbine wakes at Horns Rev wind farm.” *Wind Energy* 15 (1): 183–196.
- Hasager, C. B., A. N. Hahmann, T. Ahsbahs, I. Karagali, T. Sile, M. Badger, and J. Mann. 2019. “Europe’s offshore winds assessed from SAR, ASCAT and WRF.” *Wind Energy Science Discussions* 2019:1–27. doi:10.5194/wes-2019-38.
- Herges, T., D. C. Maniaci, B. T. Naughton, T. Mikkelsen, and M. Sjöholm. 2017. “High resolution wind turbine wake measurements with a scanning lidar.” In *Journal of Physics: Conference Series*, 854:012021. 1. IOP Publishing.
- Herges, T. G., D. Bossert, R. Schmitt, M. Johnson, D. C. Maniaci, C. Glen, and B. Naughton. 2016. “Field Demonstration of the Sandia Wake Imaging System Capabilities at the Scaled Wind Farm Technology Facility.” In *34th Wind Energy Symposium*, 1524.
- Hills, R. G., D. C. Maniaci, and J. W. Naughton. 2015. *V&V Framework*. Tech. rep. SAND2015-7455. Sandia National Laboratories. Albuquerque, NM (United States).
- Hirth, B. D., J. L. Schroeder, W. S. Gunter, and J. G. Guynes. 2012. “Measuring a utility-scale turbine wake using the TTUKa mobile research radars.” *Journal of Atmospheric and Oceanic Technology* 29 (6): 765–771.
- Iungo, G. V., and F. Porté-Agel. 2014. “Volumetric lidar scanning of wind turbine wakes under convective and neutral atmospheric stability regimes.” *Journal of Atmospheric and Oceanic Technology* 31 (10): 2035–2048.

- Iungo, G. V., Y.-T. Wu, and F. Porté-Agel. 2013. "Field measurements of wind turbine wakes with lidars." *Journal of Atmospheric and Oceanic Technology* 30 (2): 274–287.
- Jagdish, S. A. Kumar, A. Chakraborty, and R. Kumar. 2018. "Validation of wind speed retrieval from RISAT-1 SAR images of the North Indian Ocean." *Remote Sensing Letters* 9 (5): 421–428.
- Käsler, Y., S. Rahm, R. Simmet, and M. Kühn. 2010. "Wake measurements of a multi-MW wind turbine with coherent long-range pulsed Doppler wind lidar." *Journal of Atmospheric and Oceanic Technology* 27 (9): 1529–1532.
- Klein, P., et al. 2015. "LABEL: A Multi-Institutional, Student-Led, Atmospheric Boundary Layer Experiment." *Bulletin of the American Meteorological Society* 96 (10): 1743–1764. doi:10.1175/BAMS-D-13-00267.1.
- Kocer, G., M. Mansour, N. Chokani, R. S. Abhari, and M. Müller. 2011. "Full-scale wind turbine near-wake measurements using an instrumented uninhabited aerial vehicle." *Journal of Solar Energy Engineering* 133 (4).
- Krishnamurthy, R., J. Reuder, B. Svandal, H. J. S. Fernando, and J. B. Jakobsen. 2017. "Offshore wind turbine wake characteristics using scanning doppler lidar." *Energy Procedia* 137:428–442.
- Krogstad, P.-Å., and M. S. Adaramola. 2012. "Performance and near wake measurements of a model horizontal axis wind turbine." *Wind Energy* 15 (5): 743–756.
- Kumer, V.-M., J. Reuder, M. Dorninger, R. Zauner, and V. Grubišić. 2016. "Turbulent kinetic energy estimates from profiling wind LiDAR measurements and their potential for wind energy applications." *Renewable Energy* 99:898–910.
- Lawson, M. J., J. Melvin, S. Ananthan, K. M. Gruchalla, J. S. Rood, and M. A. Sprague. 2019. *Blade-Resolved, Single-Turbine Simulations Under Atmospheric Flow*. Tech. rep. NREL/TP-5000-72760. National Renewable Energy Lab. (NREL), Golden, CO (United States).
- Lee, J. C., and J. K. Lundquist. 2017. "Evaluation of the wind farm parameterization in the Weather Research and Forecasting model (version 3.8. 1) with meteorological and turbine power data." *Geoscientific Model Development* 10 (11).
- Lundquist, J., and L. Bariteau. 2015. "Dissipation of Turbulence in the Wake of a Wind Turbine." *Boundary-Layer Meteorology* 154 (2): 229–241.
- Lundquist, J., A. J. Clifton, S. Dana, T. Herges, A. Huskey, P. J. Moriarty, and J. J. Van Dam. 2019. *Wind Energy Instrumentation Atlas*. Tech. rep. NREL/TP-5000-68986. National Renewable Energy Lab. (NREL), Golden, CO (United States).
- Lundquist, J. K., et al. 2017. "Assessing State-of-the-Art Capabilities for Probing the Atmospheric Boundary Layer: The XPIA Field Campaign." *Bulletin of the American Meteorological Society* 98 (2): 289–314. doi:10.1175/BAMS-D-15-00151.1.
- Machefaux, E., G. C. Larsen, N. Troldborg, K. S. Hansen, N. Angelou, T. Mikkelsen, and J. Mann. 2016. "Investigation of wake interaction using full-scale lidar measurements and large eddy simulation." *Wind Energy* 19 (8): 1535–1551.
- Maniaci, D. C. 2016. *Overview of the V&V Framework*. Tech. rep. SAND2016-2862PE. Sandia National Laboratories. Albuquerque, NM (United States).
- Maniaci, D. C., and J. Naughton. 2019. *V&V Integrated Program Planning for Wind Plant Performance*. Tech. rep. SAND2019-6888. Sandia National Laboratories. Albuquerque, NM (United States).
- Maniaci, D. C., P. J. Moriarty, M. F. Barone, M. J. Churchfield, M. A. Sprague, and S. Arunajatesan. 2020. *Wind Energy High Fidelity Model Verification and Validation Plan*. Tech. rep. SAND2020-1332. Sandia National Laboratories. Albuquerque, NM (United States).
- Mann, J., N. Angelou, J. Arnqvist, D. Callies, E. Cantero, R. C. Arroyo, M. Courtney, J. Cuxart, E. Dellwik, J. Gottschall, et al. 2017. "Complex terrain experiments in the New European Wind Atlas." *Philosophical Transactions of the Royal Society A: Mathematical, Physical and Engineering Sciences* 375 (2091): 20160101.
- Menke, R., N. Vasiljević, K. S. Hansen, A. N. Hahmann, and J. Mann. 2018. "Does the wind turbine wake follow the topography? A multi-lidar study in complex terrain." *Wind Energy Science* 3 (2): 681–691.
- Moriarty, P., et al. 2014. "IEA-task 31 wakebench: Towards a protocol for wind farm flow model evaluation. Part 2: Wind farm wake models." In *Journal of Physics: Conference Series*, 524:012185. 1. IOP Publishing.
- Muñoz-Esparza, D., J. K. Lundquist, J. A. Sauer, B. Kosović, and R. R. Linn. 2017. "Coupled mesoscale-LES modeling of a diurnal cycle during the CWEX-13 field campaign: From weather to boundary-layer eddies." *Journal of Advances in Modeling Earth Systems* 9 (3): 1572–1594.

- Murphy, P., J. K. Lundquist, and P. Fleming. 2019. "How wind speed shear and directional veer affect the power production of a megawatt-scale operational wind turbine." *Wind Energy Science Discussions* 2019:1–46. doi:10.5194/wes-2019-86.
- Newsom, R. K., W. A. Brewer, J. M. Wilczak, D. E. Wolfe, S. P. Oncley, and J. K. Lundquist. 2017. "Validating precision estimates in horizontal wind measurements from a Doppler lidar." *Atmospheric Measurement Techniques* 10 (3): 1229.
- Nygaard, N. G. 2014. "Wakes in very large wind farms and the effect of neighbouring wind farms." In *Journal of Physics: Conference Series*, 524:012162. 1. IOP Publishing.
- Nygaard, N. G., and S. D. Hansen. 2016. "Wake effects between two neighbouring wind farms." In *Journal of Physics: Conference Series*, 753:032020. 3. IOP Publishing.
- Nygaard, N. G., and A. C. Newcombe. 2018. "Wake behind an offshore wind farm observed with dual-Doppler radars." In *Journal of Physics: Conference Series*, 1037:072008. 7. IOP Publishing.
- Ørsted. 2019. "Ørsted presents update on its long-term financial targets." *Ørsted Company Announcement List*. <https://orsted.com/en/Company-Announcement-List/2019/10/1937002>.
- Peña, A., and J. Mann. 2019. "Turbulence Measurements with Dual-Doppler Scanning Lidars." *Remote Sensing* 11 (20). ISSN: 2072-4292. doi:10.3390/rs11202444.
- Pichugina, Y. L., R. M. Banta, W. A. Brewer, S. P. Sandberg, and R. M. Hardesty. 2012. "Doppler Lidar-Based Wind-Profile Measurement System for Offshore Wind-Energy and Other Marine Boundary Layer Applications." *Journal of Applied Meteorology and Climatology* 51 (2): 327–349. doi:10.1175/JAMC-D-11-040.1.
- Platis, A., et al. 2018. "First in situ evidence of wakes in the far field behind offshore wind farms." *Scientific Reports* 8 (1): 2163. doi:10.1038/s41598-018-20389-y.
- Rados, K., G. Larsen, R. Barthelmie, W. Schlez, B. Lange, G. Schepers, T. Hegberg, and M. Magnusson. 2001. "Comparison of wake models with data for offshore windfarms." *Wind Engineering* 25 (5): 271–280.
- Rajewski, D., E. Takle, J. Lundquist, S. Oncley, J. Prueger, T. Horst, M. Rhodes, R. Pfeiffer, J. Hatfield, K. Spoth, et al. 2013. *Crop Wind Energy Experiment (CWEX): observations of surface-layer, boundary layer, and mesoscale interactions with a wind farm*, *B. Am. Meteorol. Soc.*, 94, 655–672.
- Rajewski, D. A., E. S. Takle, J. K. Lundquist, J. H. Prueger, R. L. Pfeiffer, J. L. Hatfield, K. K. Spoth, and R. K. Doorenbos. 2014. "Changes in fluxes of heat, H₂O, and CO₂ caused by a large wind farm." *Agricultural and forest meteorology* 194:175–187.
- Reuder, J., and M. O. Jonassen. 2012. "First results of turbulence measurements in a wind park with the Small Unmanned Meteorological Observer SUMO." *Energy Procedia* 24:176–185.
- Rhodes, M. E., and J. K. Lundquist. 2013. "The effect of wind-turbine wakes on summertime US midwest atmospheric wind profiles as observed with ground-based doppler lidar." *Boundary-layer meteorology* 149 (1): 85–103.
- Sanchez Gomez, M., and J. K. Lundquist. 2020. "The effect of wind direction shear on turbine performance in a wind farm in central Iowa." *Wind Energy Science* 5 (1): 125–139. doi:10.5194/wes-5-125-2020.
- Sanz Rodrigo, J., R. A. Chavez Arroyo, P. Moriarty, M. Churchfield, B. Kosović, P.-E. Réthoré, K. S. Hansen, A. Hahmann, J. D. Mirocha, and D. Rife. 2017. "Mesoscale to microscale wind farm flow modeling and evaluation." *Wiley Interdisciplinary Reviews: Energy and Environment* 6 (2): e214.
- Schroeder, J. L., W. Burgett, K. Haynie, I. Sonmez, G. Skwira, A. Doggett, and J. Lipe. 2005. "The West Texas mesonet: a technical overview." *Journal of Atmospheric and Oceanic Technology* 22 (2): 211–222.
- Shaw, W. J., L. K. Berg, J. Cline, C. Draxl, I. Djalalova, E. P. Grit, J. K. Lundquist, M. Marquis, J. McCaa, J. B. Olson, et al. 2019. "The Second Wind Forecast Improvement Project (WFIP2): General Overview." *Bulletin of the American Meteorological Society* 100 (9): 1687–1699.
- Simley, E., N. Angelou, T. Mikkelsen, M. Sjöholm, J. Mann, and L. Y. Pao. 2016. "Characterization of wind velocities in the upstream induction zone of a wind turbine using scanning continuous-wave lidars." *Journal of Renewable and Sustainable Energy* 8 (1): 013301. doi:10.1063/1.4940025.
- Sisterson, D., R. Peppler, T. Cress, P. Lamb, and D. Turner. 2016. "The ARM southern great plains (SGP) site." *Meteorological Monographs* 57:6–1.
- Sivaraman, C., E. G. Stephan, M. C. Macduff, and C. D. Hagler. 2014. *Data Archive and Portal Thrust Area Strategy Report*. Tech. rep. PNNL-23718. Pacific Northwest National Laboratory. (PNNL), Richland, WA (United States).
- Smalikho, I., V. Banakh, Y. Pichugina, W. Brewer, R. Banta, J. Lundquist, and N. Kelley. 2013. "Lidar investigation of atmosphere effect on a wind turbine wake." *Journal of Atmospheric and Oceanic Technology* 30 (11): 2554–2570.

- Stawiarski, C., K. Trümner, C. Knigge, and R. Calhoun. 2013. “Scopes and Challenges of Dual-Doppler Lidar Wind Measurements-An Error Analysis.” *Journal of Atmospheric and Oceanic Technology* 30 (9): 2044–2062. doi:10.1175/JTECH-D-12-00244.1.
- Trujillo, J. J., J. K. Seifert, I. Würth, D. Schlipf, and M. Kühn. 2016. “Full-field assessment of wind turbine near-wake deviation in relation to yaw misalignment.” *Wind Energy Science* 1 (1): 41–53. doi:10.5194/wes-1-41-2016. <https://www.wind-energ-sci.net/1/41/2016/>.
- Trujillo, J.-J., F. Bingöl, G. C. Larsen, J. Mann, and M. Kühn. 2011. “Light detection and ranging measurements of wake dynamics. Part II: two-dimensional scanning.” *Wind Energy* 14 (1): 61–75.
- Tucker, S. C., C. S. Weimer, S. Baidar, and R. M. Hardesty. 2018. “The Optical Autocovariance Wind Lidar. Part I: OAWL Instrument Development and Demonstration.” *Journal of Atmospheric and Oceanic Technology* 35 (10): 2079–2097. doi:10.1175/JTECH-D-18-0024.1.
- Veers, P., et al. 2019. “Grand challenges in the science of wind energy.” *Science* 366 (6464). doi:10.1126/science.aau2027.
- Vollmer, L., M. van Dooren, D. Trabucchi, J. Schneemann, G. Steinfeld, B. Witha, J. Trujillo, and M. Kühn. 2015. “First comparison of LES of an offshore wind turbine wake with dual-Doppler lidar measurements in a German offshore wind farm.” In *Journal of Physics: Conference Series*, 625:012001. 1. IOP Publishing.
- Vömel, H., et al. 2018. *The NCAR/EOL Community Workshop On Unmanned Aircraft Systems For Atmospheric Research*. UCAR/NCAR Earth Observing Laboratory. doi:10.5065/D6X9292S.
- Wilczak, J., C. Finley, J. Freedman, J. Cline, L. Bianco, J. Olson, I. Djalalova, L. Sheridan, M. Ahlstrom, J. Manobianco, et al. 2015. “The Wind Forecast Improvement Project (WFIP): A public–private partnership addressing wind energy forecast needs.” *Bulletin of the American Meteorological Society* 96 (10): 1699–1718.
- Wilczak, J. M., M. Stoelinga, L. K. Berg, J. Sharp, C. Draxl, K. McCaffrey, R. M. Banta, L. Bianco, I. Djalalova, J. K. Lundquist, et al. 2019. “The Second Wind Forecast Improvement Project (WFIP2): Observational Field Campaign.” *Bulletin of the American Meteorological Society*, no. 2019.
- Wildmann, N., M. Hofsäb, F. Weimer, A. Joos, and J. Bange. 2014. “MASC-a small remotely piloted aircraft (RPA) for wind energy research.” *Advances in Science and Research* 11:55.
- Wildmann, N., S. Kigle, and T. Gerz. 2018. “Coplanar lidar measurement of a single wind energy converter wake in distinct atmospheric stability regimes at the Perdigão 2017 experiment.” In *Journal of Physics: Conference Series*, 1037:052006. 5. IOP Publishing.
- Wildmann, N., N. Vasiljevic, and T. Gerz. 2018. “Wind turbine wake measurements with automatically adjusting scanning trajectories in a multi-Doppler lidar setup.” *Atmospheric Measurement Techniques Discussions (AMTD)* 2018:1–20.
- Wilkinson, M. D., M. Dumontier, I. J. Aalbersberg, G. Appleton, M. Axton, A. Baak, N. Blomberg, J.-W. Boiten, L. B. da Silva Santos, P. E. Bourne, et al. 2016. “The FAIR Guiding Principles for scientific data management and stewardship.” *Scientific data* 3.

A Science Goals

The science goals for the Atmosphere to Electrons project have been identified at a high level during previous strategic workshops (Hammond et al. 2015) under a process using Phenomena Identification Ranking Tables (Hills, Maniaci, and Naughton 2015). The major phenomena important for wind plant flow physics are identified in this section, and many have been identified as high priority (Maniaci 2016; Maniaci and Naughton 2019; Maniaci et al. 2020). The experts who attended the first AWAKEN expert elicitation meeting helped refine the critical scientific goals and questions to be answered through a new test based on their experience. The science goals and associated questions to be answered are as follows:

1. Wake recovery and dissipation

- A. How does the wake recovery rate change with atmospheric stability throughout the wind plant? How does stability within the wind farm evolve over the diurnal and seasonal cycles in contrast to concurrent ambient stability?
- B. How does wake-added and ambient turbulence affect the recovery rate and expansion?
- C. What is the best way to calculate or parameterize and observe wake recovery?
- D. How and why is turbulent dissipation in a wake modified compared to the freestream, and how can it be measured and modeled? How does dissipation rate affect wake recovery?
- E. How does the wake width change with background conditions, especially the stratification and shear?
- F. How does available momentum above the wind farm impact wake recovery?
- G. How is wake recovery related to wake meandering?
- H. How does yaw angle influence wake recovery and dissipation under different stratification conditions?

2. Wake interaction, merging, meandering

- A. How do wakes merge under different atmospheric conditions?
- B. How is the meandering affected by turbine separation distance?
- C. What are the dominant contributing factors to wake meandering? How do atmospheric conditions contribute to wake meandering? How does turbine design contribute to wake meandering? How does turbine operation contribute to wake meandering? Can these various effects be separated in a measurement campaign?
- D. How does turbine yaw misalignment influence meander and merger?
- E. How does meandering change between the upstream wakes (for the front row of turbines) and wakes deep in the plant?
- F. Is meandering driven only by the large scales in the flow, or does turbulence kinetic energy redistribution within the wake (and therefore its expansion) also contribute to wake motion? What is the influence of topography?

3. Wake impingement on downstream turbines

- A. How do wakes influence blade, tower, and nacelle loading and acceleration on downstream turbines?
- B. How is wake influence impacted by different wake mixing scenarios (single wake vs. mixed wakes from multiple turbines)? How does that change in partial-wake scenarios?
- C. How do yawed wakes impinge differently than standard wakes?
- D. At what wind speeds and other atmospheric conditions do wakes have the greatest loading impact on downstream turbines?

- E. Is the half-wake situation the most detrimental for loads?
 - F. What are the important loads for wake interaction? Can loading impacts be best isolated in a wake experiment, in combination with simulation or with simulation alone?
 - G. How can the inflow—wind turbine—wake system be modeled effectively to predict loads on downstream turbines?
4. Deep-array effects/internal boundary layer
- A. How would a deep-array effect be seen and detected in a land-based wind farm?
 - B. What are the dominant physical processes required to model the deep-array effect for a land-based wind farm?
 - C. How does the deep-array effect change with atmospheric stability?
 - D. How does the deep-array effect change with different turbine spacing and layout?
 - E. How does the deep-array effect change with turbine operation?
 - F. What is the shape of internal boundary layer growth above and on the sides of a wind farm? And how is this related to the ambient boundary layer depth?
5. Atmospheric stability and surface heat flux
- A. How do the dynamics of a single wake and of the wind plant (intensity/recovery/meandering) change under clear-sky, radiative forcing-driven atmosphere vs. under specific weather events?
 - B. What is the impact of lateral coherence (and its height dependence) in the freestream atmosphere on an unwaked turbine vs. a waked turbine (e.g., in terms of yaw loading), and how does it vary with turbine separation?
6. Momentum transport within, around, above, and below the farm
- A. How does boundary layer height (and the development of a wind farm internal boundary layer) affect momentum entrainment above the farm? How does this depend on stability conditions?
 - B. Can the influence of the wind farm on momentum be separated from the atmospheric dynamics? In simulation or observation?
 - C. Does the speed reduction of the wind farm lead to surface convergence and enhanced upward motion?
7. Wind direction, shear, and veer
- A. How does the wake behavior change under changing shear and veer?
 - B. How does the wake move under sudden changes in wind direction? What is a quantitative measure of direction change vs. a turbulent gust? Is the International Electrotechnical Commission standard a sufficient definition?
8. Surface roughness
- A. How do seasonal changes in roughness affect power performance and plant aerodynamics in general?
 - B. How important is it to accurately model roughness in our wind plant aerodynamics simulations? How dependent is the surface roughness impact to other local features such as terrain? How can individual roughness and terrain impacts be isolated in measurements?
 - C. How is the levelized cost of energy affected by roughness management (e.g., corn vs. soy, dormant season roughness management)?
9. Wind plant wake

- A. How far downstream does a wind plant wake persist? How can this be defined if the background wind field is changing?
 - B. How does the intensity/fetch of the plant wake vary with atmospheric conditions/terrain/obstacles/plant operating conditions?
 - C. How is the plant wake defined? Are there near and far wakes with different physical descriptions and influences as with individual turbine wakes?
 - D. Are there downstream turbine loading impacts from wind plant wakes, or is the dominant effect power loss?
 - E. How does the wind plant wake affect the local climate downstream?
 - F. Does a wind plant wake meander?
 - G. How can a wind plant wake be best observed?
10. Terrain impacts
- A. How does terrain affect wake recovery and trajectory (of a single wake vs. the entire plant)?
 - B. How does terrain affect loads? If increased shear/turbulence reflects in increased fatigue loads, do terrain-induced speedup effects outweigh the decreased fatigue lifetime of the components/turbine?
 - C. At which resolution does the terrain need to be modeled so that its speedup effect and its effect on wake dynamics are reproduced?
11. Wind plant upstream blockage
- A. How far upstream is the wind speed changed by presence of the wind farm?
 - B. How is the blockage effect influenced by turbine size, spacing, operation, and layout?
 - C. How does the wind accelerate around the wind farm?
12. Air-sea interaction (American WAKE experiment [AWAKEN] is envisioned for the U.S. Midwest, but if offshore is prioritized highly, these science goals can be incorporated.)
- A. Relationship between wave height and period on tower loads (and platform/anchor system loads for floating offshore wind turbines), on the flow within the plant, on wake recovery.
 - B. How far off are we when we use similarity theory to estimate surface fluxes (from buoy or satellite or model data), and how does this propagate to our extrapolation to hub heights?
 - C. Should we revisit how we model (or not model) offshore roughness?
 - D. What are the consequences of using equivalent neutral winds (satellite product) instead of stability-dependent winds when estimating vertical wind profiles and extrapolating low wind speeds to nominal hub heights? Corrections accounting for stability are often based on similarity/models.
 - E. How do swell conditions affect the atmospheric surface layer, wake recovery, and the turbine power/loads?
13. Reducing Uncertainty
- A. How will measurement sites be selected to construct ensembles of multiple experiments (e.g., single wakes, merged wakes, wind plant wakes, wind plant-to-wind-plant interactions)?
 - B. How will the selection of sites help reduce measurement uncertainty?

A.1 Instrumentation Matched to Science Questions

In addition to the feedback sessions conducted at the experts meeting, an online participation survey was conducted to gauge interest in participating in AWAKEN. Feedback was collected about what instrumentation may be available to AWAKEN for data collection. Between the participation survey and the expert meeting feedback, the following instruments are the primary instrument types identified to meet the science questions in Appendix A.

- Lidar: Lidars are remote-sensing instruments widely used in the wind energy community to remotely measure wind speed and direction in and around wind farms through the Doppler effect.
 - Scanning lidar: A scanning lidar was identified as a key instrument for the AWAKEN project, and numerous instruments may be available for deployment for the AWAKEN campaign.
 - Profiling lidar: A profiling lidar can be used to measure the profile of wind, shear, and turbulence. Based on the participation survey, multiple profiling lidars may be available for the AWAKEN project.
- Radar: Radars are remote-sensing instruments that use long-wave radiation and can be used to measure wind speed and direction at long ranges from the instrument, using the Doppler effect. Several radars, both mobile and fixed, may be available for the AWAKEN field measurements.
- Ceilometers: Ceilometers are remote-sensing instruments that can be used to measure vertical profiles of particulates in the air. They can primarily be used for determining the boundary layer and cloud heights.
- Sodar: Sodars use sound waves to measure wind speed and direction.
- Temperature/humidity profilers: Temperature/humidity profilers measure the profile of temperature and humidity is important for understanding atmospheric stability, which is important for setting boundary condition for model runs.
- Radiometers: Radiometers are used to measure radiative flux.
- Pitot tubes and turbine surface pressure measurement systems: Pitot tubes and other pressure measurement systems are used to measure the speed of air flow near the turbine surface. Several different systems may be available for AWAKEN measurements.
- Tethersondes: Tethersondes are balloon systems that are tethered to the ground, allowing for repeated profile measurements, or stationary measurements at a singular elevated location. Measurements of wind, temperature, pressure, humidity, and other atmospheric quantities are possible, depending on the instruments in the payload. Several tethered systems may be available for the AWAKEN project.
- Radiosondes: Radiosondes are single-use, balloon-borne instruments used to measure profiles of wind, temperature, pressure, and humidity.
- Towers and surface meteorological stations: Towers and surface meteorological stations can be used to measure wind, pressure, temperature, humidity, and other atmospheric parameters at set heights using in-situ instruments. Numerous towers and their associated instruments (i.e., sonic anemometers) may be available for the AWAKEN measurements campaign.
- Turbine loads and alignment measurements: Measuring the loads and alignment of turbines will be critical to understanding how the wakes impact turbine performance as well as how turbine operation impacts the creation of wakes.

Table A.1 matches the previously mentioned instrument type to science questions listed in Appendix A. Instruments in each class of instrument can be used to address the questions listed.

There are certainly other instruments available for use in the AWAKEN project, such as those that can be mounted on aerial vehicles that will be deployed. This is considered an initial list of ideas based on feedback from meeting experts as to what is immediately available.

Table A.1. Instruments Match to Science Questions

Instrument	Science Questions
Scanning lidar	1.A, 1.B, 1.C, 1.D, 1.E, 1.G, 1.H, 2.A, 2.B, 2.E, 3.B, 3.C, 4.A, 5.A, 7.A, 7.B, 9.A, 9.B, 9.F, 11.A, 11.C
Profiling lidar	1.B, 1.D, 1.E, 1.F, 2.C, 3.D, 4.A, 4.B, 4.C, 4.F, 5.A, 5.B, 6.A, 6.C, 7.A
Radar	1.A, 1.G, 1.H, 2.A, 2.B, 2.E, 3.B, 3.C, 4.A, 5.A, 7.A, 9.A, 9.B, 9.F, 11.A, 11.B
Ceillometer	2.A, 2.C, 4.F, 5.A, 6.A, 9.B
Sodar	1.A, 1.B, 1.E, 1.F, 1.H, 2.A, 3.D, 4.A, 4.B, 4.C, 4.F, 5.A, 5.B, 6.A, 6.B, 7.A
Temperature/humidity profilers	1.A, 1.B, 2.A, 2.C, 4.B, 4.C, 4.F, 5.A, 6.A, 6.B, 9.B
Radiometer	1.A, 2.B, 2.C, 5.A, 9.A
Pitot probes	All
Tethersondes	1.E, 1.F, 1.H, 2.1, 3.D, 4.B, 4.C, 6.A, 7.A, 9.A
Radiosondes	1.E, 1.F, 1.H, 2.1, 3.D, 4.B, 4.C, 6.A, 7.A, 9.A
Tower-based systems	1.A, 1.B, 2.A, 2.C, 3.D, 4.B, 4.C, 6.B, 6.C
Turbine loads and alignment	1.H, 2.C, 2.D, 3.A, 3.D, 3.F, 3.G, 9.D

B Feedback sessions

Here are the aggregated notes from feedback sessions that took place at the American WAKE experiment expert elicitation meeting that took place on March 21, 2018.

B.1 Feedback Session #1 - Science Goals

B.1.1 Question #1 - Which science goals can be removed or combined?

Reduce the length of the list of science goals. While there are many important topics listed, it seems ambitious to try and address all of them in a single campaign. In addition, several goals or topics seem nested or interdependent. For instance, while characterizing the atmospheric conditions (wind direction, wind speed, stability, shear, veer) is necessary to drawing consistent and reproducible conclusions from the observations; they are not in and of themselves high-priority goals for wind energy.

By reorganizing the science goals, the main purpose of the campaign can be more clearly identified. The other topics can be nested within the main purpose as subgoals or additional topics of interest that could be answered along the way.

The main goals appear to combine points 1 through 4:

- Goal 1. Turbine interaction with the near wake, correlation between near- and far-wake interactions. Wake vortex startup and dissipation. Wake contraction based on turbine operation
- Goal 2. How do wakes from individual turbines combine to form a wind farm wake? Does that affect our wake management strategy from one place to another?
- Goal 3. How do we characterize the transition to fully developed internal boundary layers? How does wake steering affect transition to or development of the internal boundary layer?

Within the main goals, other points from the list could be combined:

- Combine 5, 7, 8, and 10 as atmospheric boundary conditions.
 - Atmospheric stability and surface heat flux
 - Wind direction, shear, and veer
 - Surface roughness
 - Terrain impacts.
- Combine 6, 9, and 11 as transport and plant-scale phenomena.
 - Momentum transport within, around, above, and below the farm
 - Wind plant wake
 - Wind plant upstream blockage.

Point #13 (reducing uncertainty) as written is important but is not a science goal by itself. It is more about experiment design. However, there should be a goal related to quantifying uncertainties of the full range of models we use, with situational dependence.

B.1.2 Question #2 - Which science goals are missing?

While not a science goal, instrumentation and experimental design should be give equal standing in terms of planning and consideration.

- How do we make measurements in order to address science goals?

- How well can we measure quantities of interest?
- Does an optimal arrangement of sensors exist? Can we reach it?
- Unmanned aerial vehicles? Thermal imaging?

Add to large-scale phenomena/wind farm effects.

- Mesoscale effects on a wind farm, maybe not localizing instruments at one point (for example, recirculation from a nearby mountain range) or maybe expand item 6 to include these mesoscale recirculation effects.
- Large coherence structure of wind turbines for fatigue load assessment.

Add to terrain impacts/boundary conditions.

- Homogeneity (or heterogeneity) of surface (e.g., trees, roughness, terrain).

How do the science goals tie into the desired outcomes of the campaign?

- Should goals be tuned to match needs for model development or validation?
- What data do wind farm controllers need?

B.1.3 Question #3 - Additional comments on science goals?

Reorganize priorities, including:

- Goals 3 and 4 seem to be the overarching goals of the campaign, and the other points seem to feed into those high-level concepts. Those are the points that are most salient on wind plant controls. Does the wake management strategy for a single wind turbine scale work for a full plant?
- A lot of these topics are interconnected (e.g. stability greatly impacts wake recovery).
- Some reorganization might be needed, as the goals are at different levels, perhaps inputs (turbine parameters, boundary conditions) vs. outputs (e.g., wake).
- Misalignment between academia/industry on goals. Single validation/case study is not enough for industry.
- Goals we want to see/view as important:
 - Atmospheric stability vs. wake controllability
 - Freestream flow; need to have an idea of what happens around the wind farm
 - Wind-farm-to-wind-farm interaction
 - Catch the dynamics of the wake
 - Wake-to-wake interaction
 - Wind plant blockage/induction zone.
- Active control of wind turbines for wake control—industry hesitant to adopt. For example:
 - Open-loop strategies will not work
 - As an owner: never a chance to increase production after installation; wake steering could change that.
 - Need additional measurements on the turbines
 - Misalignment between academia/industry on goals; single validation/case study not enough for industry.

Idealize/control conditions

- Large idealized wind farm on flat terrain, but not very many regular gridded layouts

- Validation purposes: it is useful to start with a flat surface to eliminate areas of uncertainty and consistency of wind direction
- We must consider which goals are achievable in terms of observations and for model validation as we plan the campaign and identify goals.

Inflow/operating conditions

- Inflow is equally important as measuring the wakes, such as shear, veer, wind direction, wind direction variability, speed, turbulence, and stability
- If loads are important, then turbulence is important and the change of inflow parameters along the blade.
- Freestream flow: need to have an idea of what happens around the wind farm
- Atmospheric stability vs. wake controllability.

Instrumentation is a priority

- Think about potential new ways to instrument a site, but limited advancement by 2020
- Try to get wind direction variability from supervisory control and data acquisition (SCADA) data today; also use Richardson number or Obukhov length for stability; use temperature profile from meteorological tower or sonic anemometer close to ground; depends on homogeneity of the surface.
- How will dissipation be measured (e.g., tethered lift systems, hot-wire anemometry)?
- Possibility to instrument blades, strain measurements along blades; different (scales of) models require different measurements (e.g., long-term statistics for wind farm layout models vs. high-resolution measurements for high-fidelity models). Suggest scanning techniques to answer multiple science questions (e.g., different scanning strategies [faster scans for wake meandering vs. multiple wakes at the same time]).

Catalog "lessons learned" from previous work

- Do we have lessons learned from other measurement campaigns? Do we know at this stage?
- Researchers have a list of what they wish they did differently in Wind Forecast Improvement Project 2 (WFIP2).

Offshore

- In air-sea interactions (gulf-stream interaction—sea surface temperature and winds)
- There is a great deal of interest (professionally and scientifically) about offshore, for most of the science goals identified.
- Offshore is important. Meteorology and underlying surface are simpler. But instrumentation is more challenging.

B.2 Feedback Session #2 - Science Goal Prioritization

Please see the prioritized list of science goals and questions in Appendix A.

B.3 Feedback Session #3 - Testing Plan Feedback

B.3.1 Question #1 - What should be added to the testing plan?

Preassessment

- Lidar aerial survey prior (and perhaps after) to experiment helps in planning, and useful for modeling
- Strong surface characterization.

Flowfield measurements

- Long-range lidar/radar for multiple wakes
- Multiple lidars for multi-Doppler retrievals
- Thermodynamic properties
- Temperature profiles
- Consideration of the flow above the wind turbine array concurrent with wake observations, momentum entrainment (Do large-scale motions above the wind farm affect systemwide performance by constraining or augmenting momentum flux?).

Turbine operational data/site characterization

- High-frequency SCADA data are important
- Surface characterization (soil moisture measurements are vital for large-eddy simulation)
- Quantification of (simple) terrain
- Consider which turbines are important (GE? Siemens?)
- Turbine-mounted instrumentation.

Logistics

- Duration: the longer the better; 3–5 years
- Plan for on-site maintenance
- Infrastructure (power and cell phone coverage)
- Webcams to monitor sensors
- Calibration plan.

Concurrent modeling

- Access to real-time model output for evaluating observations (as in WFIP2)
- Models that we want to evaluate include Simulator fOr Wind Farm Applications (SOWFA), Nalu-Wind, Weather Research and Forecasting Model (WRF), wake merging/meandering, constants or parameters and their stability dependence, inertial range of turbulence in wakes.)
- Consider low- or midfidelity models that can be used iteratively, or sweep over a larger experimental matrix, compare to high-fidelity modeling
- Tune observations to measure the quantities of interest for model validation.

B.3.2 Question #2 - What should be removed from the testing plan?

Because the test plan has not yet come together into a final form, none of the small workgroups had suggestions for removing items from the plan.

B.3.3 Question #3 - What instrumentation should be added to testing plan and why?

Meteorological masts

- Temperature profiles along with the wind speed measurements
- Sonic anemometers

- Pressure-temperature-humidity sensors
- Radiometers (calibrated before/after experiment)
- Thermal imaging, flux stations (thermal, momentum, moisture fluxes).

Remote sensing

- Radiosondes
- Sodar and radio acoustic sounding systems (RASS)
- Ka-band and X-band radar
- A diversity of lidars, including:
 - Ground-based
 - Nacelle-mounted
 - Scanning
 - Profiling
 - All possible scan patterns.
- Sounding systems (difficult with the Federal Aviation Administration (FAA); a lot of labor)
- Field particle-image-velocimetry (PIV)-type systems have gone through some field testing, or possibly a lidar or multi-Doppler technique
- Satellite may be useful for cloudiness and crop measurements. Can use satellite cloudiness index for Nowcasting forecasting.

Other instruments

- Eddy covariance (surface flux stations) both upwind and throughout the wind plant
- Higher-frequency drone profiles for temperature, humidity, and wind that could include:
 - Multirotors for vertical profiling
 - Fixed wing for long transects
 - Tethered balloons for profiling winds and temperature
 - Ceilometer for planetary boundary layer heights.
- SCADA
 - Performance/operational data
 - Structural loads.

Other advice

- Plan for backup units
- Plan for calibration
- Plan for maintenance.

B.3.4 Question #4 - Any recommendations for test site location?

Sites

- Wind Forecast Improvement Project 2 (WFIP2) site (Columbia River Gorge): too complex terrain for this test, but instrumentation already exist
- Atmospheric Radiation Measurement (ARM) climate research facility
- Story County, Iowa: great towers
- North of Mason City, Iowa: there are three farms close together
- NextEra: pre/postconstruction test site
- Roscoe
- Loraine
- Champion
- ARM site: Oklahoma.

Considerations

- Keep site as simple as possible.
- Flat, simple terrain. As uniform as possible in roughness surrounding site.
- An area that already has atmospheric characterization should be prioritized.
- Atmospherically complex, topographically simple
- Consider a wind farm that operates with snow, if we wish to use particle image velocimetry (PIV)

B.3.5 Question #5 - Additional thoughts on test planning?

Logistics

- Need to be flexible with landowner
 - Land use
 - Access
 - Incentives (?)
- 2020 seems like an ambitious timeline; more likely 2022.
- In Perdigao a lot of institutes could not commit until late, which then caused disruptions for others; need strict deadlines (but balance with flexibility)
- Do projects in phases
- Make sure safety rules are clear.

Data access, archiving, and permissions

- Common architecture for data archive
- Create data management group
- Data transfer is important, often a bottleneck for partners
- Create a team responsible for permissions, access, nondisclosure agreements, and so on
- Infrastructure to support instrumentation, such as:

- A data processing center
- A data access center
- An FTP server.

Instrumentation

- How will instruments be obtained? Some examples could include:
 - Subcontracts with universities
 - Lease from companies or international labs
 - Partnerships with other national organizations: National Oceanic and Atmospheric Administration, National Center for Atmospheric Research, and laboratories
- Power: deploying many lidars will require a reliable network for instrumentation
- Carnet issues for loaned equipment from Europe
- Careful calibration/alignment of the instrumentation.

Modeling component

- Should get the right suite of models, including:
 - High-fidelity models
 - Midfidelity and engineering models
 - Parameterized models
- These should be used in the design of the experiment, during the experimental campaign, and in data analysis.

B.3.6 Question #6 - Beyond meeting attendees, any potential partners that should be included?

Agencies

- United States Department of Agriculture
- International Energy Agency (IEA) Task 31/WakeBench, IEA Task (new).

Labs

- National Laboratory for Agriculture and the Environment
- National Center for Atmospheric Research
- National Renewable Energy Centre of Spain.

University partners/research groups

- ARM climate research facility
- Technical University of Denmark
- WindForS
- ForWind
- University of Hohenheim: ability to measure atmospheric properties, aerosols
- Wind tunnel researchers
- Sowento.

Industry partners

- Wind energy supply chain
- Lidar manufacturers
- Drone companies
- ECN wind energy facilities
- Someone that can provide operational forecasts to plan hours or a day ahead.

C Expert Elicitation Meeting Agenda

MEETING FOR AWAKEN - AMERICAN WAKE EXPERIMENT
University of Colorado
Sustainability, Energy and Environment Complex (SEEC)
Boulder, Colorado, USA
March 21, 2018

8:00 am: Introductions

8:15 am: A2e Overview

- A2e Overview - Will Shaw, PNNL, DOE wind resource coordinator
- PIRT Development, Modeling needs and Validation and Verification plan - David Maniaci, Sandia National Laboratories
- AWAKEN Vision and Science Goals - Pat Moriarty, NREL

9:15 am: Breakout groups - Science goals feedback sessions #1

- Discussion of science goals, relevance, missing items etc.

9:45 am: Break - 20 minutes

10:05 am: Large Group - Summary of feedback session #1 and group discussion

10:35 am: Previous wake and atmospheric studies overview and future recommendations

- Perdigão overview - Jakob Mann, DTU
- SWiFT Testing - Tommy Herges, Sandia National Laboratories
- TWICS/CWEX 13 - Julie Lundquist, CU- Boulder

11:20 am: Breakout groups - Science goals feedback sessions #2

- From comments generated by groups in session #1, continue to modify science goals list and prioritize the science goals

11:50 am: Lunch

12:40 pm: Previous wake and atmospheric studies overview and future recommendations

- TTU radar studies/BEACON project - John Schroeder, TTU
- Perdigão wakes and others - Rebecca Barthelmie, Cornell University
- Iowa Wind Farm Observations - Daniel Rajewski, Iowa State University
- NextEra experience with wakes - Bob Conzemius, NextEra

1:40 pm: Large Group - Summary of feedback session #2 and group discussion

2:00 pm: Previous wake and atmospheric studies overview and future recommendations

- Lidar wake measurements - Peter Clive, Wood Group
- GE lidar, radar and validation - Stefan Kern, GE
- Texas Panhandle Lidar Study - Valerio Iungo, UT Dallas

2:45 pm: Initial testing plans for AWAKEN and instrumentation overview - Jeroen van Dam, NREL

3:00 pm: Breakout groups - Initial plan and instrumentation feedback session #3

- Discuss suggestion for improvement

3:30 pm: Break - 20 minutes

3:50 pm: Summary of feedback session #3 and group discussion

4:10 pm: Future testing plans with potential overlap

- WFIP II/III - Will Shaw, PNNL
- Overview of upcoming lidar wake experiments at DTU - Elliot Simon, DTU

4:40 pm: Partnering ideas and funding opportunities

- NCAR EOL Capabilities and Timeline for Involvement -Alison Rockwell, NCAR
- Group discussion - Pat Moriarty, NREL

5:15 pm: Next Steps and Wrap-up

5:30 pm: Adjourn

D Expert Elicitation Meeting Attendees

Name	Affiliation
National Laboratories	
Pat Moriarty	National Renewable Energy Laboratory
Jeroen van Dam	
Jennifer Annoni	
Nicholas Hamilton	
Jason Fields	
Jason Roadman	
Andy Scholbrock	
Paul Fleming	
David Maniaci	Sandia National Laboratories
Tommy Herges	
Sonia Wharton	Lawrence Livermore National Laboratory
Will Shaw	Pacific Northwest National Laboratory
Yelena Pichugina	National Oceanic and Atmospheric Administration
Bob Banta	
Jim Wilczak	
Aditya Choukulkar	
Alison Rockwell	National Center for Atmospheric Research
Thomas Gerz	German Aerospace Center (DLR)
Norman Wildmann	
Universities	
Julie Lundquist	University of Colorado Boulder
Nicola Bodini	
Chris Heney	
Cory Dixon	
Jessica Tomaszewski	
Rochelle Worsnop	
Joseph Lee	
John Schroeder	Texas Tech University
Jakob Mann	Technical University of Denmark
Robert Menke	
Elliot Simon	
Giacomo Valerio Iungo	The University of Texas at Dallas
Rebecca Barthelmie	Cornell University
Daniel Rajewski	Iowa State University
Tyler Bell	The University of Oklahoma
Joe Fernando	University of Notre Dame
Raghu Krishnamurthy	
Laura Leo	
Marc Calaf	The University of Utah
Jiarong Hong	University of Minnesota
Jose Lagnihia Palma	University of Porto
José Carlos Matos	

Name	Affiliation
Industry	
Cory Jog	EDF Renewables North America
Peter Clive	Wood Group
John Wang	
Bob Conzemius	WindLogics
Fatma Demet Ulker	Envision Energy
Ewan Machefaux	Vestas
Stefan Kern	General Electric
Lawrence Cheung	
Scott Schreck	Siemens Gamesa Renewable Energy
Jens Madsen	Suzlon Energy
Mark Stoelinga	Vaisala