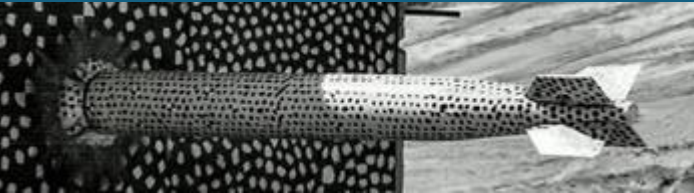
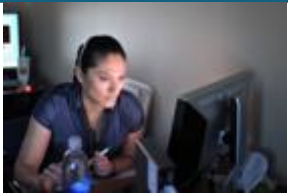


# Custom Permission Model Using Relationship Access Rules



PRESENTED BY

Curt Schneider & Rebecca Sousa

Software Systems Engineer & R&D S&E Computer Science  
Lifecycle Management Solutions



Sandia National Laboratories is a multimission laboratory managed and operated by National Technology & Engineering Solutions of Sandia, LLC, a wholly owned subsidiary of Honeywell International Inc., for the U.S. Department of Energy's National Nuclear Security Administration under contract DE-NA0003525.

SNL SAND#: SAND2020-2600 C



**Federally Funded Research and Development Center (FFRDC)**  
Operated by NTESS, subsidiary of Honeywell International, Inc.  
For U.S. Department of Energy (DOE), National Nuclear Security Administration (NNSA)

**Multi-mission Science and Engineering Laboratory (3.8B USD Budget FY19)**





Our internal customer requires access control to relationship items based on:

- Metadata values
- User role
- Relationship type
- Lifecycle state
- Workflow activity

At the time of our solution implementation, we found that the built-in permission model in Aras did not meet our specific requirements.

# The Solution

A new, custom ItemType: the Relationship Access Rule


Fields:

- Source item type
- Related item type
- Group Identity/User Role this rule pertains to
- Whether the Group Identity can Add, Delete, or Update the relationship
- “Where” fields with metadata values:
  - Type of document
  - Lifecycle state of item
  - Whether a certain activity in the workflow is complete

File Edit Views Search Actions Reports Tools Help

+ Save Undo Redo Print Excel Word Lock Unlock Refresh Copy Paste ? Checkmark

## Relationship Rule



Created By: Rebecca Sousa  
 Created On: 2/20/2020  
 Modified By: Rebecca Sousa  
 Modified On: 2/20/2020  
 Locked By: Rebecca Sousa  
 State:

## Relationship Access Rule

Rule ID  
 RR-00241

Source Item Type  
 Document ...

Relationship  
 Related Document ▼

This Role  
 Author ▼

**Can**

Add Delete Update  
☒ ☐ ☒

**Where**

Document Type  
 Procedure ▼

Source Item State is  
 Draft ▼

IMQA Approval Step Completed ?  
☐



# Defining the Access Rules



	A	B	C	D	E	F	G	H	I	J	K	L	M	N	O	P	Q	R	S
1		Procedure (Draft state)						Manual (Draft state)						Record (Draft state)					
2	Relationship	IM			General Users			Management			General Users			Management			General Users		
3		Add	Del	Upd	Add	Del	Upd	Add	Del	Upd	Add	Del	Upd	Add	Del	Upd	Add	Del	Upd
4	Procedure Approvals	No	N/A	N/A	No	N/A	N/A	N/A	N/A	N/A	N/A	N/A	N/A	N/A	N/A	N/A	N/A	N/A	N/A
5	Quick Approvals	N/A	N/A	N/A	N/A	N/A	N/A	No	N/A	N/A	No	N/A	N/A	No	N/A	N/A	No	N/A	N/A
6	File Attachments	Yes	Yes	Yes(5)	Yes	Yes	Yes(5)	Yes	Yes	Yes(5)	No	No	No	Yes	Yes	Yes(5)	No	No	No
7	Notes	Yes	Yes	Yes	Yes	Yes	Yes	Yes	Yes	Yes	No	No	No	Yes	Yes	Yes	No	No	No
8	Related Documents	Yes	Yes	No(6)	Yes	Yes	No	Yes	Yes	No	Yes	Yes	No	Yes	Yes	No	Yes	Yes	No
9	Facilities	Yes	Yes	No(7)	Yes	Yes	No	Yes	Yes	No	Yes	Yes	No	Yes	Yes	No	Yes	Yes	No
10	SSCs	Yes	Yes	No(8)	Yes	Yes	No	Yes	Yes	No	Yes	Yes	No	Yes	Yes	No	Yes	Yes	No
11	Assessments	Yes	Yes	No(8)	Yes	Yes	No	Yes	Yes	No	No	No	No	Yes	Yes	No	No	No	No
12	Condition Reports	Yes	Yes	No(8)	Yes	Yes	No	Yes	Yes	No	No	No	No	Yes	Yes	No	No	No	No
13	Corrective Actions	Yes	Yes	No(8)	Yes	Yes	No	Yes	Yes	No	No	No	No	Yes	Yes	No	No	No	No
14	Responsibilities	Yes	Yes	Yes	No	No	No	Yes	Yes	Yes	No	No	No	Yes	Yes	Yes	No	No	No
15	DCRs	No	No	Yes (1)	No	No	No	No	No	Yes (1)	No	No	No	N/A	N/A	N/A	N/A	N/A	N/A

Individual rule

An event is triggered when a user attempts to:

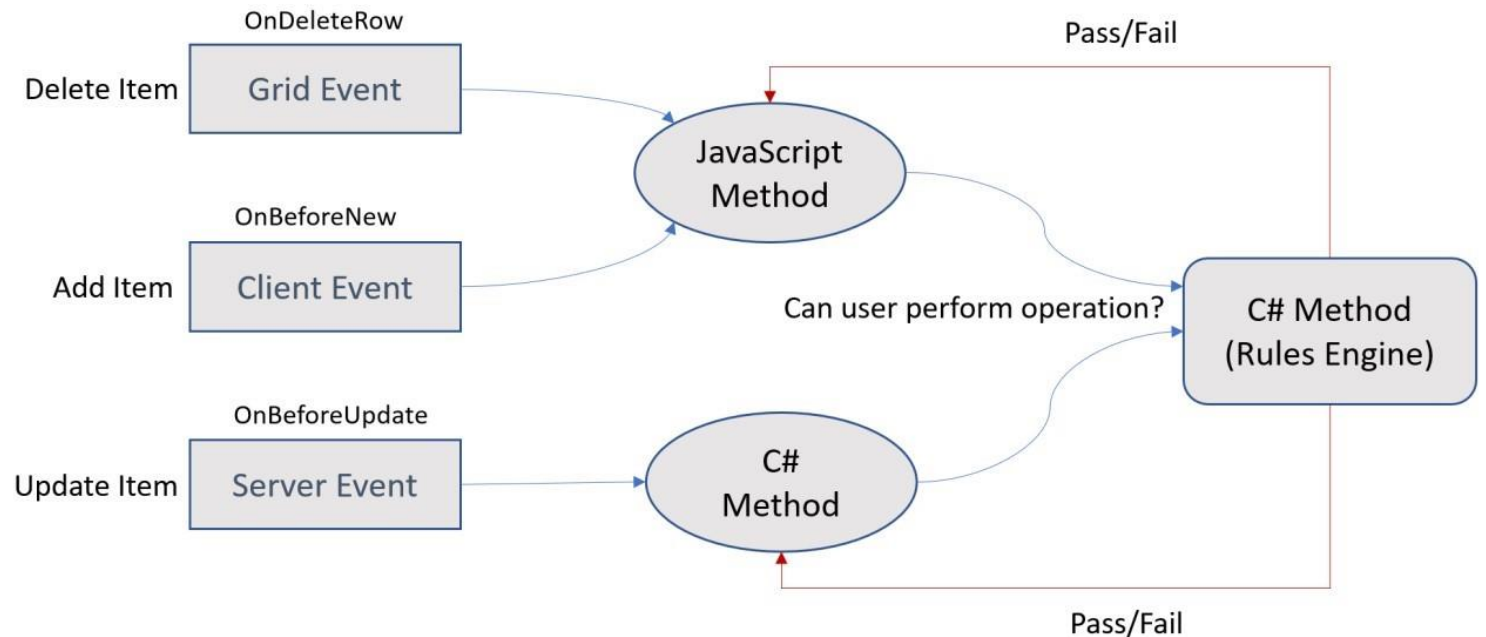
- Delete a relationship
- Add a relationship
- Update a relationship

The above events are bound to the following methods:

- A client-side JavaScript method
- A server-side C# method

Both of the above methods consult a server side Rules Engine method, which queries the Relationship Access Rules

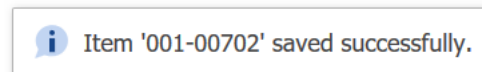
The Rules Engine returns “1” if the user can perform the action, “0” if not



If the user cannot perform the action, an error message will pop up.



Otherwise, the user will be able to save the item with the added, deleted, or updated relationship.





Questions?

