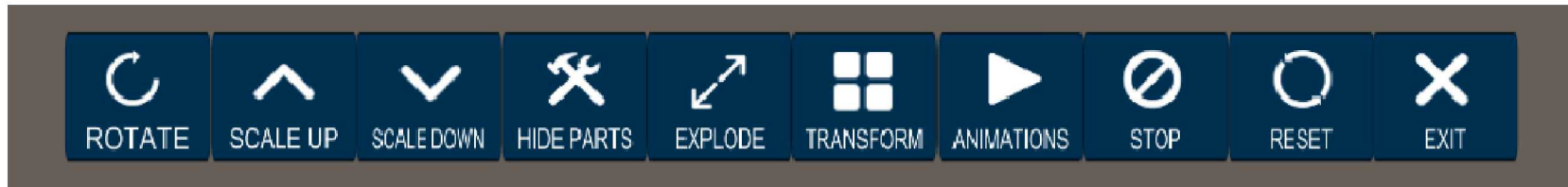


CRITR Exploration Augmented Reality (AR) Demonstration

Brandon T. Klein, Trent Yocom, Nadine Miner

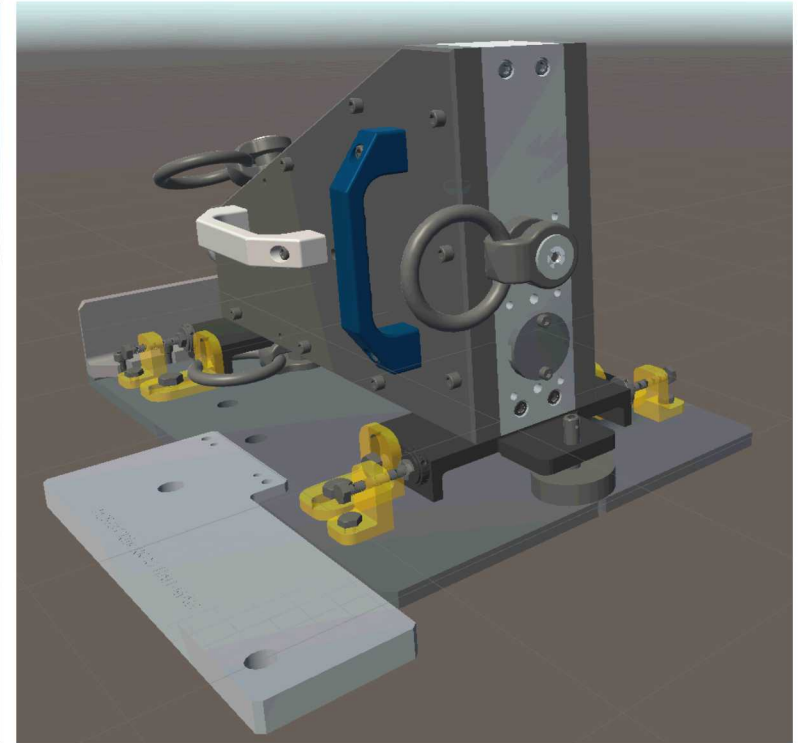
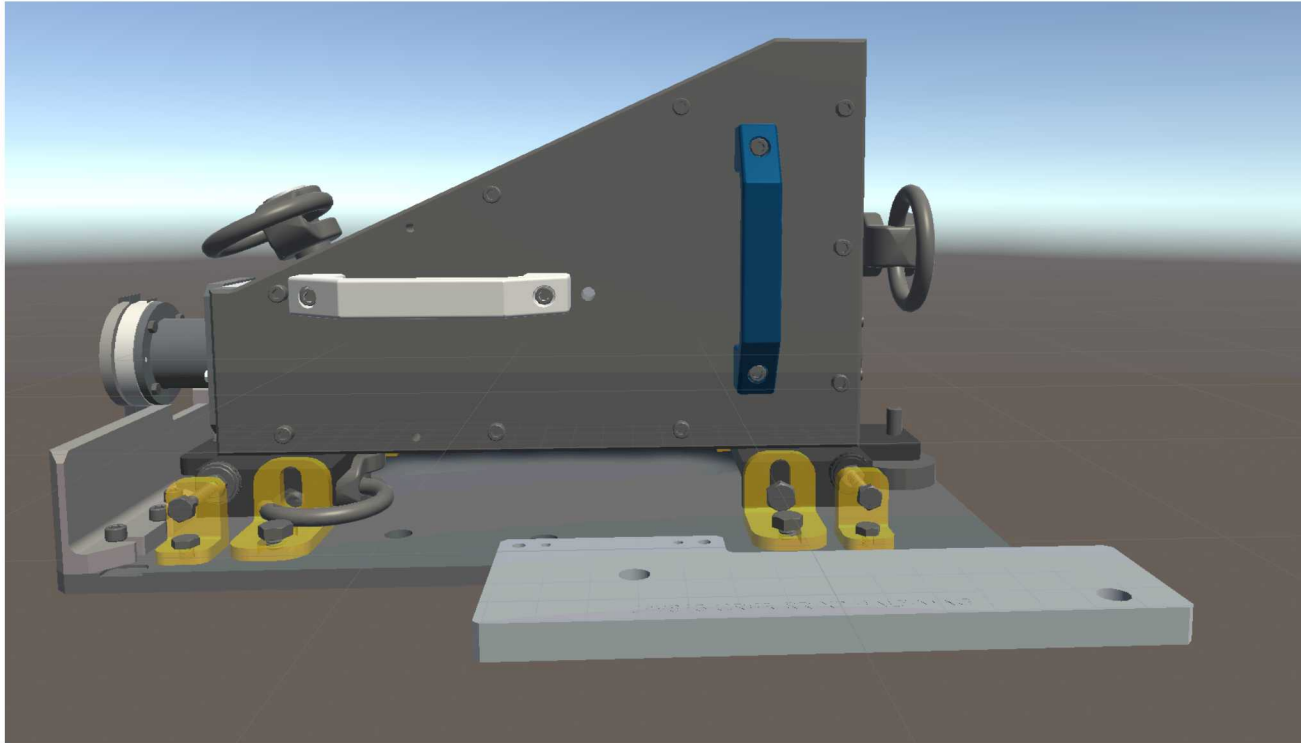
AR Demonstration Description

- The user is able to explore the CRITR model in an Augmented Reality (AR) environment through the use of a Commercial Off the Shelf device made by Microsoft called the HoloLens.
- The user is able to execute several exploration functions by “selecting” (through voice command or gesture) one of these functions:



- One animation is included in the AR demo consisting of the CRITR parts flying apart.
- The Unity development platform was used to develop the AR demonstration which is not being licensed or distributed. The demonstration is being “played” for users to experience in real-time.

Contracted views of CRITR¹ (taken from the AR demo in Unity)



Exploded views of CRITR (taken from the AR demo in Unity)

