

SANDIA REPORT

SAND2013-XXXX
Unlimited Release
Printed XXXX XXXX

Endogenous Assessment of the Capacity Value of Solar PV in Generation Investment Planning Studies

Francisco D. Munoz, Andrew D. Mills

Prepared by
Sandia National Laboratories
Albuquerque, New Mexico 87185 and Livermore, California 94550

Sandia National Laboratories is a multi-program laboratory managed and operated by Sandia Corporation, a wholly owned subsidiary of Lockheed Martin Corporation, for the U.S. Department of Energy's National Nuclear Security Administration under contract DE-AC04-94AL85000.

Approved for public release; further dissemination unlimited.



Sandia National Laboratories

Issued by Sandia National Laboratories, operated for the United States Department of Energy by Sandia Corporation.

NOTICE: This report was prepared as an account of work sponsored by an agency of the United States Government. Neither the United States Government, nor any agency thereof, nor any of their employees, nor any of their contractors, subcontractors, or their employees, make any warranty, express or implied, or assume any legal liability or responsibility for the accuracy, completeness, or usefulness of any information, apparatus, product, or process disclosed, or represent that its use would not infringe privately owned rights. Reference herein to any specific commercial product, process, or service by trade name, trademark, manufacturer, or otherwise, does not necessarily constitute or imply its endorsement, recommendation, or favoring by the United States Government, any agency thereof, or any of their contractors or subcontractors. The views and opinions expressed herein do not necessarily state or reflect those of the United States Government, any agency thereof, or any of their contractors.

Printed in the United States of America. This report has been reproduced directly from the best available copy.

Available to DOE and DOE contractors from
U.S. Department of Energy
Office of Scientific and Technical Information
P.O. Box 62
Oak Ridge, TN 37831

Telephone: (865) 576-8401
Facsimile: (865) 576-5728
E-Mail: reports@adonis.osti.gov
Online ordering: <http://www.osti.gov/bridge>

Available to the public from
U.S. Department of Commerce
National Technical Information Service
5285 Port Royal Rd
Springfield, VA 22161

Telephone: (800) 553-6847
Facsimile: (703) 605-6900
E-Mail: orders@ntis.fedworld.gov
Online ordering: <http://www.ntis.gov/help/ordermethods.asp?loc=7-4-0#online>



Endogenous Assessment of the Capacity Value of Solar PV in Generation Investment Planning Studies

Francisco D. Munoz, *Member, IEEE*, and Andrew D. Mills

Abstract—There exist several different reliability- and approximation-based methods to determine the capacity contribution of solar resources towards resource adequacy. However, most of these approaches require knowing in advance the installed capacities of both conventional and solar generators. This is a complication since generator capacities are actually decision variables in capacity planning studies. In this article we study the effect of time resolution and solar PV penetration using a capacity planning model that accounts for the full distribution of generator outages and solar resource variability. We also describe a modification of a standard deterministic planning model that enforces a resource adequacy target through a reserve margin constraint. Our numerical experiments show that at least 50 days worth of data are necessary to approximate the results of the full-resolution model with a maximum error of 2.5% on costs and capacity. We also show that the amount of displaced capacity of conventional generation decreases rapidly as the penetration of solar PV increases. We find that using an exogenously defined and constant capacity factor based on time-series data can yield relatively accurate results for small penetration levels (less than 5%). For higher penetration levels (up to 20%), the modified deterministic planning model better captures avoided costs and the decreasing value of solar PV. Although our results are not general, they highlight the importance of accounting for the variation in both energy and capacity value of solar resources endogenously in capacity planning models. All numerical experiments are performed using the IEEE Reliability Test System and 7 years worth of demand and solar data from a utility in Arizona.

Index Terms—Capacity Value, Solar, Generation Planning, Approximation Techniques, Installed Reserve Margin.

NOMENCLATURE

Sets and Indexes:

G	Set of conventional generators, indexed g
H	Set of hours, indexed h
$S(X)$	Set of outage scenarios, indexed s

Parameters:

AV_{ghs}	Generator availability
CAP_g	Nominal capacity of generator [MW]
CC_g	Annualized capital cost of generator [\$/MW-year]
CPV	Capacity value of solar PV [MW]
D_h	Demand level [MW]
D_{h*}	Peak demand [MW]

EUE	Threshold of expected unserved energy, expressed as a percentage of total demand
FOR_g	Generator forced outage rate
MC_g	Marginal cost of generator [\$/MWh]
ND_h	Demand less solar PV output [MW]
P_s	Probability of outage scenario
PV_h	Solar PV output [MW]
RM	Installed reserve margin

Variables:

u_{hs}	Amount of unserved energy [MW]
x_g	Generation investment decision (binary)
y_{gas}	Generation dispatch level [MW]
X	Vector of investment decisions, x_g

I. INTRODUCTION

SIGNIFICANT reductions in the price of solar generation technologies increasingly make it a viable economic alternative to supply power at competitive prices [1], to offset greenhouse gas emissions [2], and to meet renewable targets at minimum cost for consumers [3], [4]. Advancements in the last decades have reduced the installed price of small solar PV systems from approximately \$12 per W in 1998 to less than \$5 per W in 2013 [5], and projections indicated further reductions in the near future [6]. Installed solar capacity in the U.S. now exceeds 15,000 MW and, due primarily to growth in utility-scale PV, is expected to exceed 20,000 MW by 2016 [7].

Decisions by load-serving entities (LSEs) regarding the selection of resource portfolios to meet forecasted demand, maintain the reliability of the system, and fulfill policy objectives can be complex. Weighing one option over another involves consideration of several attributes that determine the economic value of a resource to the overall system [8]. Our focus in this article is the contribution of solar PV (and other variable energy resources like wind) to resource adequacy requirements as part of these broader resource planning decisions.

Several methods can be used to assess the capacity value of variable energy resources (VER). Probabilistic methods are among the most accepted because they rely on standard metrics such as the loss of load expectation (LOLE) or the expected unserved energy (EUE) [9]. A popular method is the computation of Effective Load Carrying Capability (ELCC), which provides a measure of the amount by which demand could be increased after adding a generator while maintain the same reliability level [10]. Other reliability-based metrics include the Equivalent Conventional Power (ECP) and the Equivalent Firm Power (EFP), but these are rarely used in

Sandia National Laboratories is a multi-program laboratory managed and operated by Sandia Corporation, a wholly owned subsidiary of Lockheed Martin Corporation, for the U.S. Department of Energy's National Nuclear Security Administration under Contract DE-AC04-94-AL85000.

F. D. Munoz is with the Analytics Department at Sandia National Laboratories (e-mail: fdmunoz@sandia.gov)

A. D. Mills is with the Electricity Markets and Policy group at the Lawrence Berkeley National Laboratory (e-mail: admills@lbl.gov)

practice [11]. Although these metrics can provide very accurate measures of the capacity value of renewable generators, they require extensive amounts of system data and can be computationally difficult to evaluate.

Approximation methods, on the other hand, can provide relatively good estimates of the capacity value of time-dependent resources at a much lower computational cost. Some approximation approaches aim at providing direct estimates of the ELCC (e.g., Garver's method [12], an extension of Garver's approach to multi-state capacity representation of power plants [13], and the Z method [14]). Other approximation methods base calculations on the availability of VER during risky periods, such as peak load. Milligan and Parsons [15], for instance, propose approximating the capacity value of wind by computing the LOLP-weighted sum of hourly capacity factors over a subset of peak-load hours. An even simpler method that is used by several ISOs in the U.S. is to average the capacity factor of a generator over, say, the top 10% load hours [10]. Milligan and Parsons [15] find that for wind, these approximations based on time-dependent data provide sufficiently accurate results. Madaeni et al. [11] compare the performance of approximation methods to reliability-based approaches for solar PV and also conclude that capacity factor-based metrics give good estimates of the capacity value for this technology. However, they point out that due to the high correlation between load and solar irradiance, setting a low threshold of peak hours (e.g., less than top 30%) can result in underestimation of the capacity value of PV.

An important limitation of these methods is that the installed capacities of all generators need to be known in advance. It is challenging to identify the optimal portfolio of resources if the portfolio of resources has to be specified in order to estimate contributions to adequacy. Instead, ELCC is estimated for one technology at a time which foregoes the opportunity to investigate portfolio interactions when multiple resources are changed.

An alternative to determining the capacity contribution of one resource at a time is to establish a portfolio-wide reliability target, such as LOLE or EUE, and find the optimal mix of resources that meet the constraint. Examples of capacity expansion models with such capabilities include the algorithms described in [16] and in [17], which are now part of the EGEAS model managed by the EPRI [18]. These capacity expansion tools find the optimal portfolio of generation investments that minimize capital and operating costs subject to a constraint on the maximum amount of expected unserved energy. By considering both production costs and the full space of outages, the contribution of solar or wind towards resource adequacy is done endogenously, without the need for computing reliability metrics such as the ELCC.

In this article we examine the contribution of solar PV and wind to adequacy using a probabilistic capacity expansion model that uses a portfolio-wide EUE constraint. We also compare the results of the probabilistic model to a simplified alternative model that is similarly designed to endogenously represent the capacity contribution of VER without the full probabilistic simulation. We introduce these models in Section II and describe the data used in a case study in Section III.

In Section IV we evaluate the impact of using a sample of all available days in the dataset. We then use the models to estimate the capacity contribution of VER and find the avoided cost associated with adding VER to the portfolio. Finally, we conclude with the specific contributions in Section V.

II. CAPACITY EXPANSION MODELS

In this section we describe the probabilistic capacity expansion model used with our case study. This model minimizes total system cost subject to a reliability constraint and considers the full space of generator outage possibilities. We then describe a standard deterministic capacity expansion model that enforces resource adequacy through an installed reserve margin constraint. We introduce a variation to this model we call the virtual demand curtailment (VDC) model that endogenously represents the capacity contribution of VER. In all cases the objective is to minimize the sum of the annualized capital cost and operations for a representative year. For analysis purposes we specify the installed capacity of solar PV in each case. However, the capacity expansion models could be extended to account for different investment alternatives in wind, solar, or hydro technologies. Examples of such implementations are in [19]–[21].

For the sake of simplicity, we ignore ramping constraints, unit commitment variables/constraints, and transmission limits. Although it has been shown that relaxing unit commitment constraints could result in biased generation investment portfolios [22]–[24], the additional cost that result from using such approximation are rather small [25].¹ Moreover, transmission limits are often accounted for in resource adequacy studies through the definition of reliability areas within decongested regions. Thus, we believe that the impact of relaxing unit commitment variables and transmission limits in our analyses does not affect our conclusions. A simplification with a potentially larger effect on our findings is ignoring ramping limits, particularly for large penetrations of solar PV due to higher magnitude of extreme ramp events in the early evening and, therefore, the need for a more flexible fleet of conventional generators.² However, studying the impact of these features on the capacity value of solar PV is beyond the scope and we leave it as a subject of future research.

A. Probabilistic model

To investigate capacity expansion decisions with solar PV we use a benchmark probabilistic model that fully accounts for forced outages in conventional generation and variability in demand and solar PV. Variability in demand and PV is accounted for through hourly profiles from historical data.

¹Jin et al [25] find the generation investment portfolio found using a simple economic dispatch model differs from the one found using a detailed unit commitment simulation. However, the performance of the solution found using the economic-dispatch based model is only 0.02% more expensive relative to the one found using the unit-commitment based capacity expansion model.

²The California ISO projects that the total capacity of variable energy resources (i.e., solar PV, solar thermal, distributed PV, and wind) will be 15,701 MW in 2016. This will result in an increment of system maximum 3-hour net-load ramps from 7,654 MW in 2012 to 10,190 MW in 2016. Solar resources will be the largest contributors (52%) to maximum 3-hour continuous net-load ramps in the evenings of the non-summer months in 2016 [26].

The objective of the probabilistic model (Equation (1)) is to minimize the sum of the annualized cost of investments in conventional generation and the expected costs of dispatching those investments to meet net demand. We allow for spillage of power from solar PV if $PV_h > D_h$ and define the net demand as $ND_h = \max\{D_h - PV_h, 0\}$.

$$\min \sum_{g \in G} CC_g x_g + \sum_{s \in S(x)} P_s(X) \sum_{g \in G} MC_g y_{ghs} \quad (1)$$

Subject to constraints:

$$\sum_{g \in G} y_{ghs} + u_{hs} = ND_h \quad \forall h \in H, s \in S(x) \quad (2)$$

$$y_{ghs} \leq AV_{ghs}(X) CAP_g x_g \quad \forall g \in G, h \in H, s \in S(x) \quad (3)$$

$$\sum_{s \in S} P_s \sum_{h \in H} u_{hs} \leq EUE \sum_{h \in H} D_h \quad (4)$$

$$x_g \in \{0, 1\} \quad \forall g \in G \quad (5)$$

$$y_{ghs}, u_{hs} \geq 0 \quad \forall g \in G, h \in H, s \in S(x) \quad (6)$$

The outage space $S(X)$ depends on the vector of investment decisions $X = [x_1, x_2, \dots, x_{|G|}]$ and defines all the possible combinations of generator availabilities³ for the units that have been selected for construction (i.e., $AV(X)_{gs} = 0$ if $x_g = 0$). Thus, for a given X , the probabilities of each scenario are defined as follows.

$$P(X)_s = \prod_{g \in G} (1 - AV_{gs}(X)) FOR_g + AV_{gs}(X) (1 - FOR_g) \quad (7)$$

Constraint (4) requires the expected unserved energy, which occurs when the generation capacity that is not on outage is less than the net demand, to remain below a chosen threshold. In addition, constraint (3) imposes a limit on the dispatch level from any unit, which must be less than its capacity if the unit is available (i.e., $AV_{gs}(X) = 1$), or equal to zero if the unit is on outage (i.e., $AV_{gs}(X) = 0$).

Fully evaluating the previously described problem is exceedingly challenging for realistic numbers of generators as the number of possible combinations of outages grows exponentially.⁴ Various methods have been developed to reduce the complexity of the probabilistic production cost problem included in the investment planning model without sacrificing accuracy. These include the convolution of equivalent load duration curves through the Baleriaux-Booth method [27], [28], Monte Carlo simulations [29], and bounding techniques [30], among others [31], [32]. Bloom [16] proves that the model described by equations (1)-(6) can be separated into an investment problem (master problem) and a dispatch problem (subproblem) and solved to optimality using Benders decomposition. The dispatch problem accounts for all combinations of forced outages through the Baleriaux-Booth probabilistic simulation method [27], [28]. Duals from the dispatch problem with a candidate set of investment decisions are then passed to the investment problem to identify candidate investments that further reduce costs (e.g. an optimality cut) or bring the reliability level closer to the target level (e.g. a feasibility cut).

³In this article we assume that there are no derated states (i.e., $AV(X)_{gs} \in \{0, 1\} \forall s \in S(X), g \in G$).

⁴For instance, on a system with 100 generators there exist 2^{100} outage scenarios on each dispatch hour considered in the capacity expansion model.

We implement the Bloom method to solve the probabilistic model to optimality. This model is our benchmark since it fully accounts for all possible combinations of forced outages when making investment decisions and estimating the operating cost of those units. In addition to the Bloom method for finding optimal generation investment decisions, we also employ standard methods for evaluating hourly unmet energy and Expected Unserved Energy (EUE) (as detailed by Fockens et al [33]), or Loss of Load Probability (LOLP) and Loss of Load Expectation (LOLE) (as detailed in Billinton and Allan [9]).

B. Deterministic model

In many instances the enumeration of forced outages in the probabilistic model introduces too much complexity for typical capacity expansion decisions, especially when considering transmission constraints. A standard approximation method is the use of a deterministic economic dispatch problem. Deterministic planning models enforce reliability requirements through an installed reserve margin constraint and derate the capacities of conventional generators based on their forced outage rates [34]. Examples of planning models that utilize these approximations are described in [21], [34]–[39].

We formulate the deterministic planning model as follows.

$$\min \sum_{g \in G} CC_g x_g + \sum_{g \in G} MC_g y_{gh} \quad (8)$$

Subject to constraints:

$$\sum_{g \in G} y_{ghs} = ND_h \quad \forall h \in H \quad (9)$$

$$y_{ghs} \leq (1 - FOR_g) CAP_g x_g \quad \forall g \in G, h \in H \quad (10)$$

$$\sum_{g \in G} CAP_g x_g + CPV \geq (1 + RM) D_{h^*} \quad (11)$$

$$x_g \in \{0, 1\} \quad \forall g \in G \quad (12)$$

$$y_{ghs} \geq 0 \quad \forall g \in G, h \in H \quad (13)$$

Note that in constraint (10) the capacity of generators is derated in proportion to the expression $1 - FOR_g$, as in [34]. Constraint (11) enforces an installed reserve margin RM with respect to the peak demand, D_{h^*} . The capacity of all conventional generators counts 100% towards this reserve margin. However, only a fraction of the installed capacity of solar PV, denoted CPV , counts towards the reserve requirement. The evaluation of CPV , which is often replaced by the estimate of the ELCC, is nontrivial for two reasons. First, the capacity value of solar decreases rapidly and nonlinearly as penetration increases [40]–[42]. Second, even if the capacity of solar PV is known in advance, evaluating the ELCC for the resource requires knowledge of the capacity of all conventional generators (i.e., knowing the vector X), which are actually a variable in capacity expansion studies.

Existing deterministic capacity expansion models and resource adequacy studies use different assumptions to account for the deterioration of the capacity value of solar at higher penetration levels [8], [43]. Some ISOs use a constant pre-determined value to determine capacity payments for all new solar resources [8]. This is the same simplification used in the capacity expansion models IPM [37] and PLEXOS LT

[39]. Other models account for the variation in the capacity value of solar indirectly by, for instance, a requirement of backup conventional generation that changes with penetration levels [44]. However, the capacity value of solar in all of these models and studies is exogenously defined, which could over or underestimate the need for firm capacity to meet resource adequacy targets. A potentially better approximation is the one used in the ReEDS model [45]. Since ReEDS is solved sequentially, using a rolling horizon, the model computes the updated estimates of the average and marginal capacity contributions of solar *in between* periods. Nevertheless, since the parameters used *within* periods are constant and do not depend on the investment variables, it is not clear whether such approximation will provide the right economic signals for large additions of solar PV.

C. Virtual Demand Curtailment model

A trivial modification to the installed reserves constraint (11) is to enforce the reserve margin requirements with respect to the peak net demand. This approach is used in the SWITCH-WECC model [46] and it does not require the specification of a value (or function) CPV for the capacity value of solar. Since the peak net demand is not necessarily known in advance—if the installed capacity of solar PV is variable—this modification requires enforcing the installed reserve margin on an hourly basis. Here we enhance this formulation by adding variables v_h that allow for small violations to the modified installed reserve constraint (15).

$$\sum_{g \in G} CAP_g x_g \geq (1 + RM)(ND_h - v_h) \quad \forall h \in H \quad (14)$$

$$\sum_{h \in H} v_h \leq \delta \sum_{h \in H} D_h \quad (15)$$

The v_h variables can be interpreted as virtual demand curtailments. We control the maximum amount of virtual curtailment through the parameter δ on equation (15), which is comparable to the expected unserved energy constraint (4) in the probabilistic model. The value of δ is, however, chosen independently of the EUE target used in the probabilistic model. The purpose of relaxing some of the modified installed reserves constraints is to prevent low-probability events from imposing too conservative minimum required investment levels in conventional generation.⁵ In summary, the virtual demand curtailment (VDC) model replaces the constraint from the deterministic planning model (11) with the modified installed reserve constraint (14) and the maximum virtual demand curtailment constraint (15).

III. TEST-CASE AND DATA

For the conventional generation investment options we use the 32 generators described in the IEEE Reliability Test System [9], which total 3,405 MW of potential generation

⁵Not relaxing constraint (15) can result in a model that is extremely sensitive to the selection of representative dispatch hours. For instance, if the parameter δ is set to zero, as in [46], a cloudy day in the dataset could drive excessive investments in conventional generation. In that situation the model will be “blind” with respect to the contribution of solar PV towards resource adequacy if $PV_{h^*} = 0$ and $ND_{h^*} = D_{h^*}$.

capacity. Investment cost and operating costs were updated to reflect current estimates based on EIA data.

We developed an hourly dataset of load, PV and wind generation based on information available for Arizona Public Service. Historical hourly loads were collected from Ventyx Velocity Suite. Inter-annual load growth trends were removed from the data by projecting all years to 2012 based on the long-term growth trends. The remaining load data still has inter-annual variation due to weather and other factors, but not due to long-term load growth. Historical solar generation was estimated through historical satellite observations in the National Solar Resource Database (NSRDB). The satellite data was converted to PV production data using the NREL PVWatts model assuming an AC to DC derate factor of 0.83. The individual sites and orientation of PV (azimuth, tracking/flat, etc) were based on previous information collected from APS [47]. Based on the available load and PV data we were able to create a time-synchronized dataset that covers seven years: 2003-2009. We also created a time series of wind data based on a set of 30 MW wind sites in the Western Wind and Solar Integration Study (WWSIS) dataset for 2004-2006 [48]. For the remaining years we repeated the 2004-2006 wind dataset. As a results the wind data is not fully time synchronous with the load and PV data over the seven year period, though wind is not the primary focus of our analysis.

We scale the load data such that the peak load hour over the full seven year period is equal to 1500 MW. With these assumptions choosing to build roughly half of the generation investment options in the IEEE RTS would meet this peak demand.

IV. RESULTS

In this section we summarize the results from a range of numerical experiments using the probabilistic, deterministic, and VDC planning models. In Section IV-A we study the accuracy of two hour selection algorithms. In Section IV-B we compute the contribution of solar PV towards resource adequacy using the probabilistic model, the VDC model, and a capacity-factor based approach. Section IV-C discusses the implications of the decreasing marginal capacity contribution of solar PV. Section IV-D describes the reduction in utility costs as a function of solar PV penetration and highlights the importance of using a model capable of computing the capacity of the resource endogenously. Throughout Sections IV-C - IV-D we also display results for a wind site as a point of comparison to the results with solar PV.

All models were implemented in the Coopr open-source Python library [49] and run on a 48-core workstation with 512GB of RAM. Solution times for the probabilistic method range from 2 hrs. for the full 7-year dataset to 131 sec. for a 50-day sample.

A. Comparison of hour selection methods

For all models, the computational burden increases with the length of the load, PV, and wind data. Here we investigate two approaches for reducing the length of the time series: daily sampling and clustering.

The daily sampling algorithm selects a sample of days that minimizes the sum of the square differences of the means,

standard deviations, and correlations between the sampled days and the full dataset for 10,000 random replications. This method has been used in [50] and in [51]. We examine the results of samples of 1 up to 300 days.

The clustering approach uses the k-means algorithm. This method groups all hours of the dataset into k different clusters trying to minimize the distance between each observation and the centroids. The k-means algorithm has been used as a scenario reduction approach in [51], [52], and [53]. We use the centroid of each cluster to create representative hours, which are weighted in the objective function in proportion to the size of each cluster. We examine the effect of considering 5 to 2000 clusters and also consider a variant of this method by forcing the top 10 peak load hours to be included as individual clusters.

As a benchmark, we find the optimal investment decisions with the seven years of hourly data using the probabilistic model with 100 MW of PV (roughly 4% PV penetration on an energy basis). We chose an EUE reliability target of 0.01% of the annual demand.⁶ The total installed capacity of the 22 selected conventional generators is 1527 MW with a total cost of \$339.4 million/yr (composed of \$184.4 and \$150.0 million/yr in investment and operational costs, respectively).

We assess the impact of only using a sample of hours (or of using the clusters) by comparing the capacity expansion model decisions and costs with sampling to the capacity expansion model decisions costs with the full dataset. Figure 1 shows the total capacity and cost from the decisions using sampled days divided by the total capacity and cost determined with the full set of seven years of hourly data. Our results suggest that using a sample of less than 10 days is not sufficient to accurately capture the variability of demand and solar resources. As shown in Figure 1, a small sample can bias the investment and operating costs by more than 20% with respect to the results of the full dataset. However, as more days are included, the results found using a sample of days quickly converge to the results with the full seven years of data. A sample of 50 days yields investment decisions and costs that are within $\pm 2.5\%$ of the results with the full seven years of data.

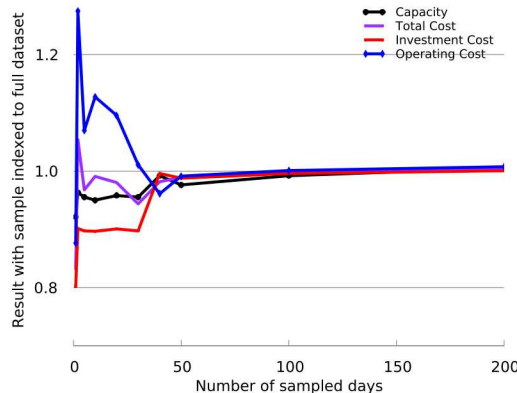


Fig. 1. Capacity expansion decisions and costs of the probabilistic model using sampled days normalized by the results with the full seven-year dataset.

⁶An EUE target of between 0.01% to 0.005% led to a reserve margin of about 9% to 12% of the median annual peak demand.

We similarly evaluate clustering and constrained clustering with peak hours. The minimum number of clusters required to be within $\pm 2.5\%$ of the result from the full sample is more than 2,000 (83 days). Including the top 10 peak demand hours allows 1000 clusters (42 days) to closely replicate the investment decisions from a full seven years of data (within the $\pm 2.5\%$ tolerance). This difference in the performance of the clustering algorithm is because the regular k-means method tends to average out the peak hours with some non-peak load hours, which leads to too little investments in generation capacity.⁷

For the remainder of this analysis we conduct all analyses using the 50 sampled days.

B. Contribution of solar PV towards resource adequacy

The core of any method to assess resource adequacy is to identify periods with high risk of not meeting demand. These periods of high risk, which typically occur during times of high demand, are evaluated endogenously in the probabilistic capacity expansion model and the VDC model. Figure 2 characterizes risk in each hour on a high demand day using three different metrics: the expected energy not served per hour ($U_h = \sum_{s \in S} P_s u_{hs}$) and the loss of load probability (LOLP).⁸ The risk metrics for the Demand profile (solid blue line), are based on the generation investments chosen by the probabilistic model without any PV (or wind). As expected, all three metrics show that the periods with high risk of having unmet demand are between noon and 8pm.

We next add 500 MW of PV (roughly 20% PV penetration on an energy basis) and re-solve the probabilistic model. The addition of PV reduces the net demand in the afternoon (solid red line). Since the capacity expansion with and without PV both meet EUE target of 0.01% of demand, the annual risk level stays the same. The periods of high risk, however, shift from the afternoon (without PV) to the early evening (with PV), when solar resources are no longer producing. It is this shift in high-risk periods to the early evening, depicted through the U_h and LOLP metrics in Figure 2, that causes the deterioration in the capacity value of solar PV at higher penetration levels [42].

Since PV production occurs during periods of high risk, the addition of PV contributes to meeting the resource adequacy constraint. Here we estimate the contribution of PV (or wind) towards resource adequacy by finding the total installed capacity chosen by the probabilistic capacity expansion model with increasing deployment of PV (or wind). The difference between the installed conventional capacity found for demand alone and the installed capacity with the addition of PV (or

⁷As a sensitivity analysis we also forced the inclusion of the peak days in the sampling algorithm. However, we find that fifty samples without the peak days provides more accurate results than 50 samples with the peak day. For this particular case, including the peak day in the samples led to investment decisions that over-built the system.

⁸Note the risk metric is a scaled representation of U_h and LOLP. The scaling factors were chosen such that each metric would be visible on the same axis.

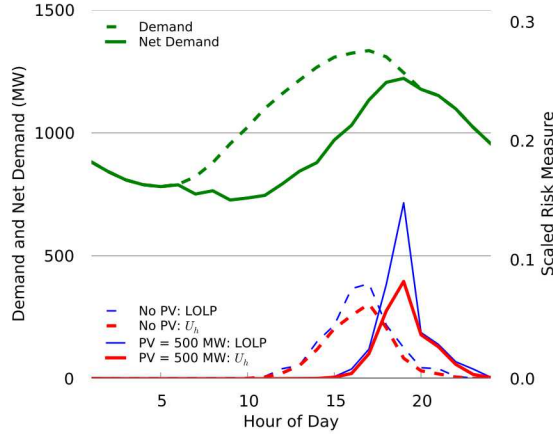


Fig. 2. Periods of high risk with generation investments based on the demand or net demand (with 20% PV).

wind) is referred to as the capacity contribution.⁹

As expected, we find that the capacity contribution of solar (as a fraction of installed capacity of PV) decreases rapidly for high penetration levels. For instance, Figure 3 shows that the first 5% of solar penetration (125 MW of PV) displaces 50 MW of conventional capacity. However, since the high-risk periods shift to the early evening for higher penetration of solar PV, increasing the capacity of solar PV to meet 20% of the annual demand (500 MW of PV) with this resource would only displace 128 MW of conventional generation.

A simple approach to estimate the capacity value of solar PV is to average the capacity factor of PV generation among the top 10% load hours [11]. This method is justified because the periods of high risk are correlated with periods of peak demand. However, for large penetration levels this method does not account for the shift of the high-risk periods shown in Figure 2. The dashed green line shows the projected capacity value of solar PV approximated by averaging the capacity factor of solar PV based on this method. We find that this capacity-factor based approach can provide a relatively accurate estimation of the capacity contribution of solar towards adequacy for small penetration levels (less than 5%). However, using this approach for higher penetration levels (more than 10%) could significantly overstate the contribution of solar PV. For a 20% penetration level this method predicts that solar PV could displace 215 MW of conventional generation, which is nearly double of the true value computed using the probabilistic model.

On the other hand, we find that the VDC model described in Section II-C can accurately replicate the capacity contribution of solar PV (in terms of magnitude, change with penetration, and difference between PV and wind) found with the probabilistic model.¹⁰

⁹As a validation experiment we computed the ELCCs for solar and wind for all penetration levels. The capacity contribution measured using either approach, the ELCC or the amount of displaced conventional generation, yield the same results.

¹⁰Replicating the behavior of the probabilistic model with the approximation model depends in part on the selection of the reserve margin and δ . In this case we chose parameter values that produce a good match to the probabilistic model for the no PV case. The reserve margin is set to 20% and δ is 0.1%.

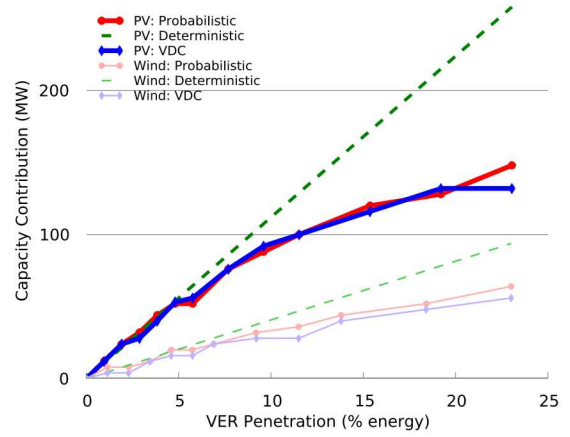


Fig. 3. Capacity contribution of PV or wind with increasing shares based on the change in investments found using the probabilistic model or the approximation model.

C. Marginal Capacity Contribution

The decision of how much solar PV to add in a capacity expansion model depends on the impact that solar has on the total system cost. In general terms, the investment planning model will add solar capacity until the marginal benefits of this resource equal its marginal cost. One contributor to the marginal benefits of solar is the marginal capacity contribution. To illustrate how the marginal capacity contribution of solar changes with penetration, we fit a 3rd or 4th order polynomial to the capacity contribution line in Figure 3, and then took the derivative of the fit to find the marginal capacity contribution, depicted in Figure 4.

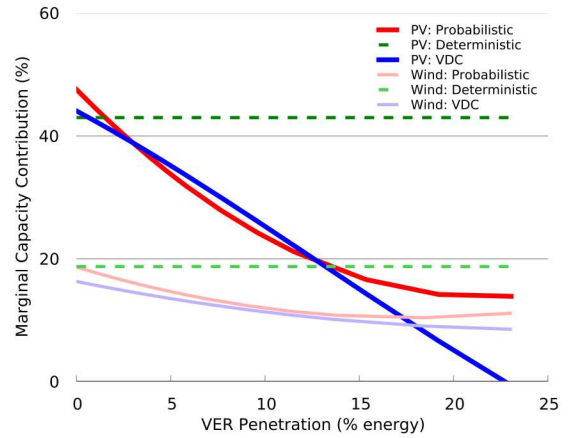


Fig. 4. Estimated marginal capacity contribution of PV and wind.

The marginal capacity contribution of PV found by both the probabilistic and the approximation method is above 40% of the nameplate capacity at low penetration levels (less than 2%). However, it falls below 20% for penetration levels above 15%, approximately. In contrast, the marginal capacity contribution of wind is below 20% for low penetration levels and only decreases to 10% for penetration levels above for 15%. This result highlights that taking into account the decreasing capacity value of VERs in generation planning studies is particularly important for solar PV.

We find that the most significant deviation of the results from the probabilistic model and the approximation method occurs with high penetrations of PV (>15% penetration). The approximation method shows that the marginal capacity

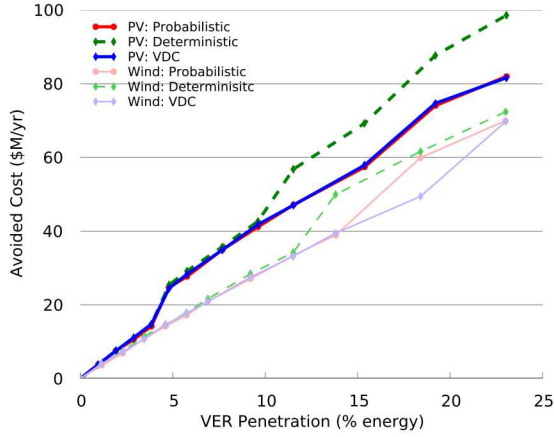


Fig. 5. Avoided total costs with increased PV and wind with both the probabilistic model and the approximation method

contribution decreases toward 0% at penetrations above 20% whereas the probabilistic models continues to show a larger, though still low, contribution. In contrast, the capacity-factor based approximation (dashed green line) yields a constant marginal capacity value that is only accurate for extremely low penetration levels.

D. Reduction in Utility Costs

The capacity contribution of solar is important in reducing investments, as is the reduction in the need to dispatch conventional generation. The combination results in the total avoided costs of PV. Here we calculate the total avoided costs as the difference of total system cost in the no PV case and the case with PV, using both the probabilistic model and the approximation method.¹¹ The same analysis was also done for wind as a comparison.

Figure 5 shows the results for a range of VER penetration. The curves are non smooth due to the lumpiness of generation investment alternatives. Again, the VDC model yields almost identical estimations of avoided costs for solar PV for the whole range of penetration levels analyzed.

Here we measure effect of the inaccuracy of the capacity-factor based approximation (deterministic method) discussed in Sections IV-B and IV-C in economic terms. For penetration levels below 10%, the deterministic method provides an accurate estimate of the avoided costs for both solar PV and wind. However, since at larger penetration levels the deterministic method overstates the capacity value of solar PV (Figure 3), the estimates of the avoided costs computed using this method are biased upwards. For instance, at 20% penetration, both the probabilistic and VDC models estimate that the avoided costs of solar PV are \$74 M/year. However, the deterministic approach overstates this value by 19%.

V. CONCLUSIONS

In this article we show that the contribution of PV (and wind) to maintaining resource adequacy can be represented in capacity expansion models endogenously. Our main contributions are a threefold. First, we perform the first analysis of the capacity contribution of solar PV (and wind) using a

probabilist capacity expansion model that considers the full space of generator outages and that can be solved to optimality. Second, we compare the accuracy of existing deterministic planning methods to predict the economic value of solar PV (and wind). Third, we propose a variant of the deterministic reserve margin planning approach that can reasonably replicate the behavior of the more detailed probabilistic model over a range of penetrations of solar PV (and wind).

We find that daily or hourly sampling techniques can be used to reduce the computational complexity in capacity expansion models. Our results suggest that only a small fraction of hourly data (50 days) is needed to replicate the results of the probabilistic model using a seven-year dataset (2557 days), but which is more than what it is often used in capacity expansion models.

With the probabilistic model we confirm that the capacity value of solar PV decreases rapidly as penetration increases. The contribution of PV to resource adequacy is high (>40% of the nameplate capacity) at low penetration levels, but that the marginal contribution declines with increasing penetration. The decline was due in part to the periods of high risk shifting from the late afternoon to early evening. In contrast, a capacity-factor based approach (deterministic model) significantly overestimates the contribution of solar PV towards resource adequacy. For a 20% penetration the capacity-factor based approximation estimates that the capacity value of solar is nearly double (215 MW) its true contribution (128 MW). This discrepancy is directly reflected in the estimated avoided cost for the same penetration level. The deterministic model overestimates the avoided cost of solar by 19% with respect to what is computed using the probabilistic model.

Due to the importance of contributions to resource adequacy to the overall economic value of PV, it is important that capacity expansion models carefully represent this change in contribution with increasing penetration. The VDC model presented here is one promising approach that does not significantly increase the computational burden. However, for small penetration levels the capacity-factor based method provides a reasonably accurate estimate of the capacity contribution and avoided cost of PV. Thus, in the context of identifying cost-effective portfolios of generation, the VDC model (for a range of VER penetrations) or deterministic model (for low penetrations) could be help planners identify high quality investments strategies. Though it is important to recognize that they do not replace detailed probabilistic production cost simulations.

REFERENCES

- [1] K. Branker, M. Pathak, and J. M. Pearce, "A Review of Solar Photovoltaic Levelized Cost of Electricity," *Renewable and Sustainable Energy Reviews*, vol. 15, no. 9, pp. 4470–4482, 2011.
- [2] K. Bokenkamp, H. LaFlash, V. Singh, and D. Bachrach Wang, "Hedging Carbon Risk: Protecting Customers and Shareholders from the Financial Risk Associated with Carbon Dioxide Emissions," *The Electricity Journal*, vol. 18, no. 6, pp. 11–24, 2005.
- [3] R. Wiser and G. Barbose, "Renewables Portfolio Standards in the United States," LBNL, Tech. Rep., 2008. [Online]. Available: <http://eetd.lbl.gov/ea/ems/reports/lbnl-154e.pdf>
- [4] R. Wiser, G. Barbose, and E. Holt, "Supporting Solar Power in Renewables Portfolio Standards: Experience from the United States," *Energy Policy*, vol. 39, no. 7, pp. 3894–3905, 2011.

¹¹Note that the avoided costs only take into account the economic benefits of adding the resource and not its capital or operating costs.

- [5] G. Barbose, N. Darghouth, and S. Weaver, "Tracking the Sun VII: An Historical Summary of the Installed Cost of Photovoltaics in the United States from 1998 to 2013," LBNL, Tech. Rep., 2014. [Online]. Available: http://emp.lbl.gov/sites/all/files/LBNL-6808e_0.pdf
- [6] D. Feldman, G. Barbose, R. Margolis, T. James, S. Weaver, N. Darghouth, R. Fu, C. Davidson, S. Booth, and R. Wiser, "Photovoltaic System Pricing Trends: Historical, Recent, and Near-Term Projections 2014 Edition," NREL, Tech. Rep., 2014. [Online]. Available: <http://www.nrel.gov/docs/fy14osti/62558.pdf>
- [7] "Solar Market Insight Report 2014 Q2," SEIA, Tech. Rep., 2014. [Online]. Available: <http://www.seia.org/research-resources/solar-market-insight-report-2014-q2>
- [8] A. Mills and R. Wiser, "An evaluation of solar valuation methods used in utility planning and procurement processes," LBNL, Tech. Rep., 2012. [Online]. Available: http://emp.lbl.gov/sites/all/files/lbnl-5933e_0.pdf
- [9] R. Billinton, R. N. Allan, and R. N. Allan, *Reliability evaluation of power systems*. Plenum press New York, 1984, vol. 2.
- [10] "Methods to Model and Calculate Capacity Contributions of Variable Generation for Resource Adequacy Planning," NERC, Tech. Rep., 2011. [Online]. Available: <http://www.nerc.com/files/ivgtf1-2.pdf>
- [11] S. H. Madaeni, R. Sioshansi, and P. Denholm, "Comparing Capacity Value Estimation Techniques for Photovoltaic Solar Power," *IEEE Journal of Photovoltaics*, vol. 3, no. 1, pp. 407–415, 2013.
- [12] L. L. Garver, "Effective Load Carrying Capability of Generating Units," *IEEE Transactions on Power Apparatus and Systems*, no. 8, pp. 910–919, 1966.
- [13] C. D'Annunzio and S. Santoso, "Noniterative Method to Approximate the Effective Load Carrying Capability of a Wind Plant," *IEEE Transactions on Energy Conversion*, vol. 23, no. 2, pp. 544–550, 2008.
- [14] K. Dragoon and V. Dvortsov, "Z-Method for Power System Resource Adequacy Applications," *IEEE Transactions on Power Systems*, vol. 21, no. 2, pp. 982–988, 2006.
- [15] M. R. Milligan and B. K. Parsons, "A Comparison and Case Study of Capacity Credit Algorithms for Intermittent Generators," NREL, Tech. Rep., 1997. [Online]. Available: www.nrel.gov/docs/legosti/fy97/22591.pdf
- [16] J. A. Bloom, "Solving an Electricity Generating Capacity Expansion Planning Problem by Generalized Benders' Decomposition," *Operations Research*, vol. 31, no. 1, pp. 84–100, 1983.
- [17] J. A. Bloom, M. Caramanis, and L. Charny, "Long-Range Generation Planning Using Generalized Benders' Decomposition: Implementation and Experience," *Operations Research*, vol. 32, no. 2, pp. 290–313, 1984.
- [18] (2014) Electric Generation Expansion Analysis System (EGEAS), Version 10.0, EPRI. [Online]. Available: <http://www.epri.com/abstracts/Pages/ProductAbstract.aspx?ProductId=000000000001016192>
- [19] M. Caramanis, "Analysis of non-dispatchable options in the generation expansion plan," *IEEE Transactions on Power Apparatus and Systems*, no. 7, pp. 2098–2103, 1983.
- [20] J. A. Bloom, "Probabilistic production costing with dependent generating sources," *IEEE Transactions on Power Apparatus and Systems*, no. 8, pp. 2064–2071, 1985.
- [21] F. D. Munoz, B. F. Hobbs, J. Ho, and S. Kasina, "An Engineering-Economic Approach to Transmission Planning Under Market and Regulatory Uncertainties: WECC Case Study," *IEEE Transactions on Power Systems*, vol. 29, no. 1, pp. 307–317, Jan. 2014.
- [22] B. Palmintier and M. Webster, "Impact of Unit Commitment Constraints on Generation Expansion Planning with Renewables," *IEEE Power and Energy Society General Meeting*, 2011.
- [23] C. I. Nweke, F. Leanez, G. R. Drayton, and M. Kolhe, "Benefits of Chronological Optimization in Capacity Planning for Electricity Markets," in *IEEE International Conference on Power System Technology (POWERCON)*, 2012, pp. 1–6.
- [24] A. Shortt, J. Kiviluoma, and M. O'Malley, "Accommodating Variability in Generation Planning," *IEEE Transactions on Power Systems*, vol. 28, no. 1, pp. 158–169, 2013.
- [25] S. Jin, A. Botterud, and S. M. Ryan, "Temporal versus stochastic granularity in thermal generation capacity planning with wind power," *IEEE Transactions on Power Systems*, vol. PP, no. 99, pp. 1–9, 2014.
- [26] "Final 2014 Flexible Capacity Needs Assessment," CAISO, Tech. Rep., 2014. [Online]. Available: http://www.caiso.com/Documents/Final_2014_FlexCapacityNeedsAssessment.pdf
- [27] H. Baleriaux, E. Jamouille, and F. L. de Guertechin, "Simulation de l'exploitation d'un parc de machines thermiques de production d'électricité couple à des stations de pompage," *Revue E*, vol. 5, no. 7, pp. 225–245, 1967.
- [28] R. R. Booth, "Power system simulation model based on probability analysis," *IEEE Transactions on Power Apparatus and Systems*, no. 1, pp. 62–69, 1972.
- [29] M. Pereira, M. Maceira, G. Oliveira, and L. Pinto, "Combining Analytical Models and Monte-Carlo Techniques in Probabilistic Power System Analysis," *IEEE Transactions on Power Systems*, vol. 7, no. 1, pp. 265–272, 1992.
- [30] B. F. Hobbs and Y. D. Ji, "Stochastic Programming-Based Bounding of Expected Production Costs for Multiarea Electric Power Systems," *Operations Research*, vol. 47, no. 6, pp. 836–848, 1999.
- [31] M. Lin, A. Breipohl, and F. Lee, "Comparison of Probabilistic Production Cost Simulation Methods," *IEEE Transactions on Power Systems*, vol. 4, no. 4, pp. 1326–1334, 1989.
- [32] J. Pérez-Ruiz and A. J. Conejo, "Multi-period Probabilistic Production Cost Model Including Dispatch Constraints," *IEEE Transactions on Power Systems*, vol. 15, no. 2, pp. 502–507, 2000.
- [33] S. Fockens, A. van Wijk, W. Turkenburg, and C. Singh, "A Concise Method for Calculating Expected Unserved Energy in Generating System Reliability Analysis," *IEEE Transactions on Power Systems*, vol. 6, no. 3, pp. 1085–1091, 1991.
- [34] B. F. Hobbs, "Optimization Methods for Electric Utility Resource Planning," *European Journal of Operational Research*, vol. 83, no. 1, pp. 1–20, 1995.
- [35] W. Short, P. Sullivan, T. Mai, M. Mowers, C. Uriarte, N. Blair, D. Heimiller, and A. Martinez, "Regional Energy Deployment System (ReEDS). NREL/TP-6A2- 46534. Golden, CO: National Renewable Energy Laboratory." 2011.
- [36] A. Paul and D. Burtraw, "The RFF Haiku Electricity Market Model. Resources for the Future," <http://www.rff.org/RFF/Documents/RFF-Rpt-Haiku.v2.0.pdf>, 2002.
- [37] ICF, "Integrated Planning Model brochure," <http://www.icfi.com/insights/products-and-tools/ipm>, 2013.
- [38] EIA, "MARKAL Technology Database and Model," http://www.epa.gov/nrmrl/appcd/climate_change/markal.htm, 2013.
- [39] E. Exemplar, "PLEXOS Integrated Energy Model product brochure," <http://energyexemplar.com/software/plexos-desktop-edition/>, 2014.
- [40] R. Perez, M. Taylor, T. Hoff, and J. Ross, "Reaching Consensus in the Definition of Photovoltaics Capacity Credit in the USA: A Practical Application of Satellite-Derived Solar Resource Data," *IEEE Journal of Selected Topics in Applied Earth Observations and Remote Sensing*, vol. 1, no. 1, pp. 28–33, 2008.
- [41] S. Pelland and I. Abboud, "Comparing photovoltaic capacity value metrics: A case study for the city of toronto," *Progress in Photovoltaics: Research and Applications*, vol. 16, no. 8, pp. 715–724, 2008.
- [42] A. Mills and R. Wiser, "Changes in the Economic Value of Photovoltaic Generation at High Penetration Levels: A Pilot Case Study of California," *IEEE Journal of Photovoltaics*, vol. 3, no. 4, pp. 1394–1402, 2013.
- [43] P. Sullivan, K. Eureka, and R. Margolis, "Advanced Methods for Incorporating Solar Energy Technologies into Electric Sector Capacity-expansion Models: Literature Review and Analysis," NREL, Tech. Rep., 2014. [Online]. Available: <http://www.nrel.gov/docs/fy14osti/61185.pdf>
- [44] S. J. Smith, A. H. Mizrahi, J. F. Karas, M. Nathan, "US Renewable Futures in the GCAM," PNNL, Tech. Rep., 2011. [Online]. Available: http://www.pnnl.gov/main/publications/external/technical_reports/PNNL-20823.pdf
- [45] B. Sigrin, P. Sullivan, E. Ibanez, and R. Margolis, "Representation of the Solar Capacity Value in the ReEDS Capacity Expansion Model," in *Photovoltaic Specialist Conference (PVSC), 2014 IEEE 40th*. IEEE, 2014, pp. 1480–1485.
- [46] J. Nelson, J. Johnston, A. Mileva, M. Fripp, I. Hoffman, A. Petros-Good, C. Blanco, and D. M. Kammen, "High-resolution Modeling of the Western North American Power System Demonstrates Low-cost and Low-carbon Futures," *Energy Policy*, vol. 43, pp. 436–447, 2012.
- [47] A. Mills, A. Botterud, J. Wu, Z. Zhou, B. M. Hodge, and M. Heaney, "Integrating Solar PV in Utility System Operations," Argonne National Laboratory, Argonne, IL, Tech. Rep. ANL/DIS-13/18, Oct. 2013. [Online]. Available: <http://www.osti.gov/scitech/biblio/1107495>
- [48] C. Potter, D. Lew, J. McCaa, S. Cheng, S. Eichelberger, and E. Grimit, "Creating the dataset for the western wind and solar integration study (u.s.a.)," *Wind Engineering*, vol. 32, no. 4, pp. 325–338, Jun. 2008.
- [49] W. E. Hart, C. Laird, J.-P. Watson, and D. L. Woodruff, *Pyomo: Optimization Modeling in Python*. Springer, 2012.
- [50] A. H. van der Weijde and B. F. Hobbs, "The Economics of Planning Electricity Transmission to Accommodate Renewables: Using Two-Stage Optimisation to Evaluate Flexibility and the Cost of Disregarding Uncertainty," *Energy Economics*, vol. 34, no. 6, pp. 2089–2101, 2012.

- [51] F. D. Munoz, B. F. Hobbs, and J.-P. Watson, "New Bounding and Decomposition Methods for MILP Investment Problems: Multi-Area Transmission and Generation Planning Under Policy Constraints," *JHU Working Paper*, 2014.
- [52] L. Baringo and A. Conejo, "Correlated Wind-Power Production and Electric Load Scenarios for Investment Decisions," *Applied Energy*, vol. 101, pp. 475–482, 2013.
- [53] S. Wogrin, P. Duenas, A. Delgadillo, and J. Reneses, "A New Approach to Model Load Levels in Electric Power Systems With High Renewable Penetration," *IEEE Transactions on Power Systems*, vol. 29, no. 5, pp. 2210–2218, Sept 2014.
- [54] A. Keane, M. Milligan, C. J. Dent, B. Hasche, C. D'Annunzio, K. Dragoon, H. Holttinen, N. Samaan, L. Soder, and M. O'Malley, "Capacity value of wind power," *IEEE Transactions on Power Systems*, vol. 26, no. 2, pp. 564–572, 2011.

BIOGRAPHIES



Francisco D. Munoz (SM'11) is Postdoctoral Appointee in the Analytics Department at Sandia National Laboratories. He holds a Ph.D. in Energy Economics and Operations Research at The Johns Hopkins University. He received a Bachelors degree in Mechanical Engineering from the Universidad de Chile and a M.S.E. in Environmental Management and Economics from The Johns Hopkins University.



Andrew D. Mills is a Staff Research Associate in the Electricity Markets and Policy Group at Lawrence Berkeley National Laboratory. He conducts research and provides policy analysis on renewables and transmission, including power system operations and valuation of wind and solar. Andrew has an M.S. in Energy and Resources from UC Berkeley and a B.S. in Mechanical Engineering from the Illinois Institute of Technology.