



Sandia National Laboratories

Presentation to the

Society for the Marketing Professional Services

Nydia Schmidt

GPP Program Manager, Facilities Project
Planning & Development



Sandia National Laboratories

Sandia is a government-owned/contractor operated (GOCO) facility. Lockheed Martin manages Sandia for the U.S. Department of Energy's National Nuclear Security Administration. We seek collaborative partnerships on emerging technologies that support our mission.



Organization

- Infrastructure Operations & Business Management (VP 10000)
 - Facilities Management & Operations (10800)
 - Planning
 - Corporate Projects
 - Customer Funded
 - Maintenance
 - Other Orgs



Facilities Management & Operations Vision

The Facilities Management & Operations Center provides physical assets fit for the Sandia line organizations' use and provides the Laboratory Institutional control of those assets



Ten-Year Site Plan (TYSP)

Integrates the NNSA and non-NNSA mission needs with budgetary constraints to produce a realistic and achievable near-term plan for operating and maintaining facilities and infrastructure, as well as a long-term vision of what is needed to improve the Site and meet future technical requirements.



Type of Projects

- **Line Items** - separately identified capital project activities specifically reviewed and approved by Congress as a line item in the Federal budget
 - Funding Range - \$5M and above



Type of Projects

- **General Plant Projects (GPP)** – Capital projects that provide for the design and construction of improvements to land, buildings, and utility systems
 - Funding Range - \$25,000 - \$5M

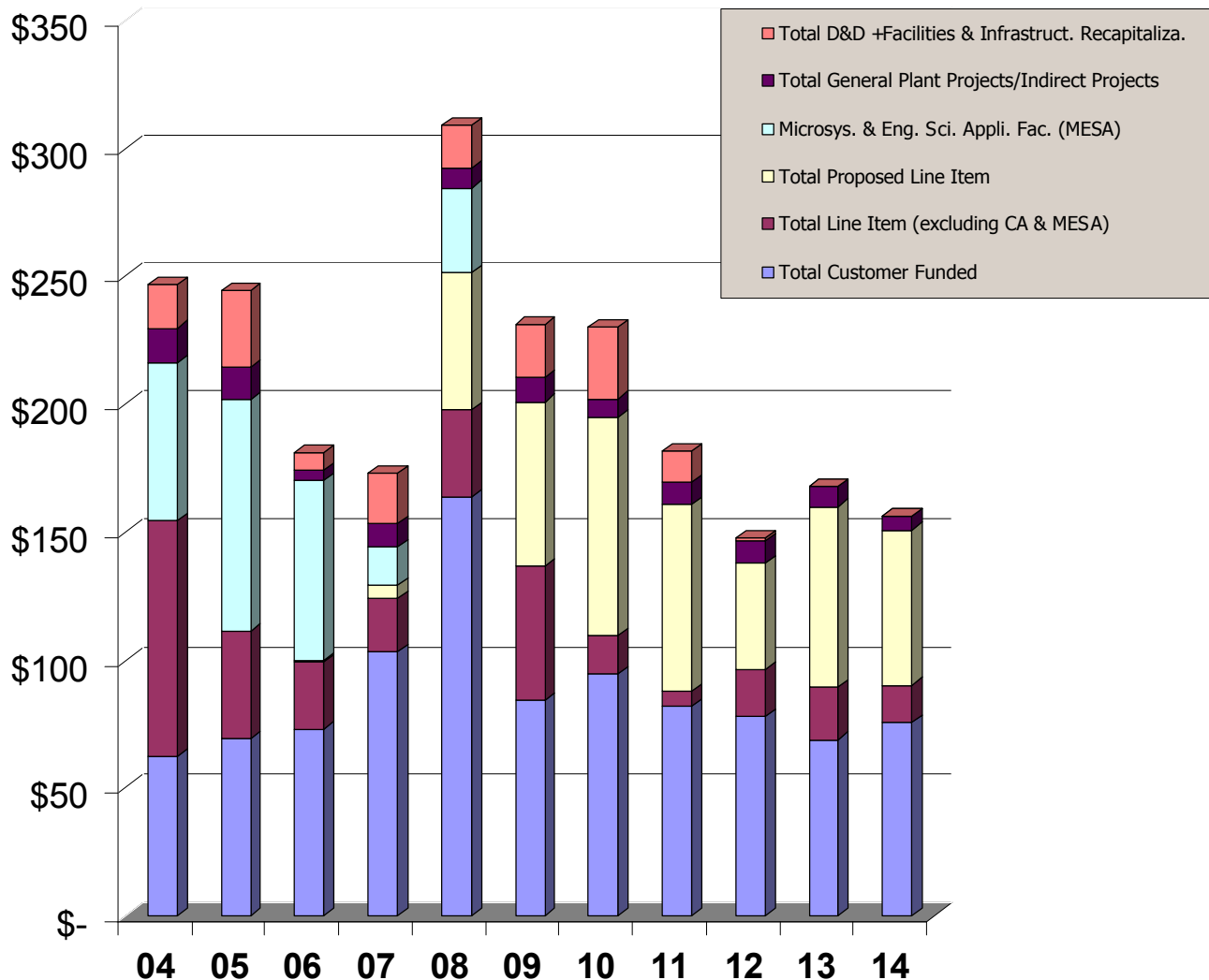


Type of Projects

- **Major Renovation** – \$250K - \$5M
- **IGPP** – Institutional General Plant Projects – Up to \$5M
- **O&M Restoration** - Repair or replacement of major building equipment, components, or an entire building system, if the building is in good condition

Sandia Facilities Work Projections

New Mexico





Microsystems Engineering and Systems Applications Project (MESA)



Total Estimated Costs:
\$462 million

Status:
In construction, MicroFab
and MicroLab completed

- Provides facilities & equipment to enable design, integration, and qualification of microsystem components
- Three facilities (MicroFab, MicroLab & WIF) associated with the infrastructure, utilities & retooling of MDL
- Total of 391,000 sf for 648 personnel



Weapons Evaluation Test Laboratory (WETL)



Total Project Costs:

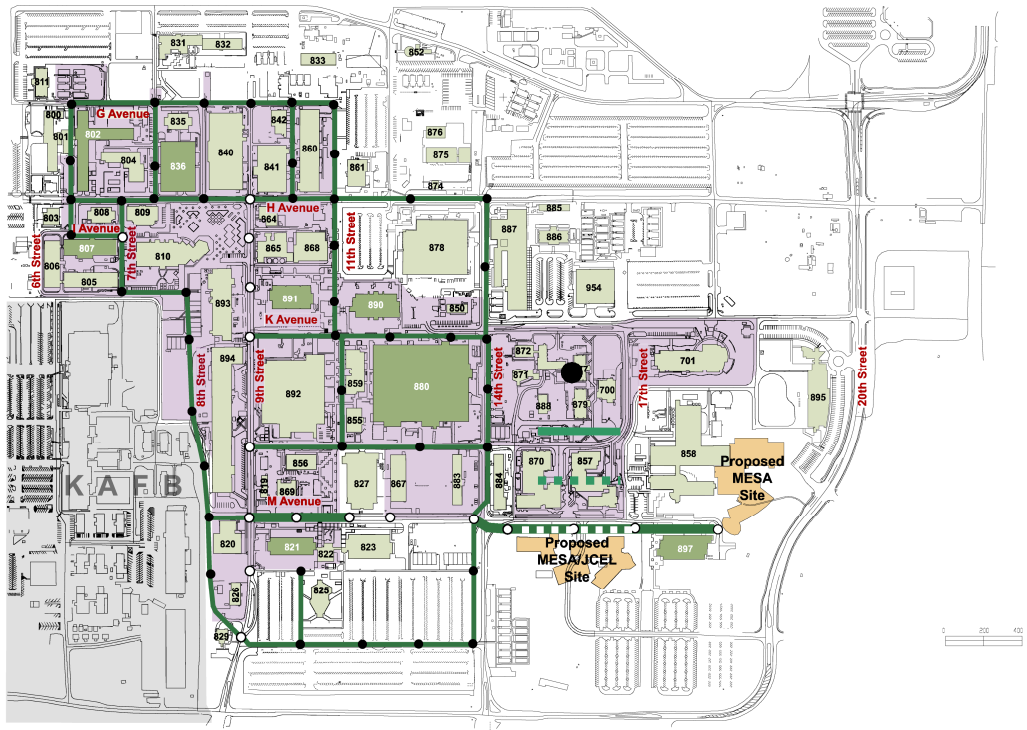
\$28 million

Status:

Close-out

- 31,400 sf of state-of-the-art laboratory designed to test weapon component devices
- Located at Pantex in Amarillo, TX and operated by SNL

Exterior Communications Infrastructure Modernization (ECIM)



Total Project Costs:
\$25 million

Status:
In Construction

- Upgrade, renovate, refurbish, and replace the underlying communications infrastructure in the western half of TA I



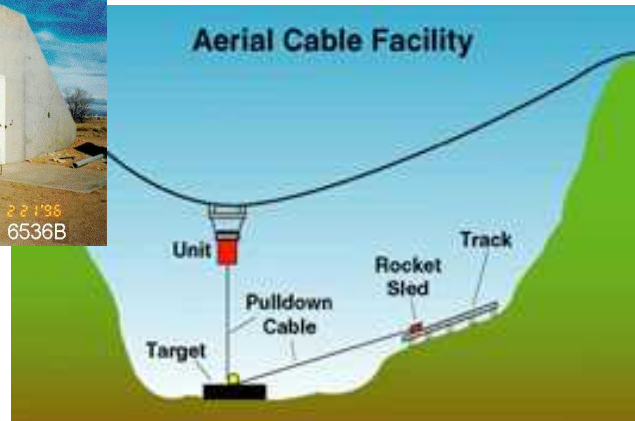
Heating System Modernization (HSM)

- Install new local boilers to address heating requirements in TAI, upgrade the TAI gas distribution system as required, abate the current steam pit asbestos, and D&D the steam plant and related systems

Total Project Costs:
\$59 million

Status:
Title II Design

Test Capabilities Revitalization (TCR)



Total Project Costs:
\$110 million

Status:

**Phase I – In construction,
Phase II – Title I Design**

- Revitalize test capabilities in areas of weapons qualification, development, surveillance, investigation, and model validation
- Capabilities include TA III Central Services, 10K Sled Track, Aerial Cable, Burn Site, Centrifuge, Dynamic Shock, Thermal Radiant Heat, and Vibration & Acoustics



New Master Substation



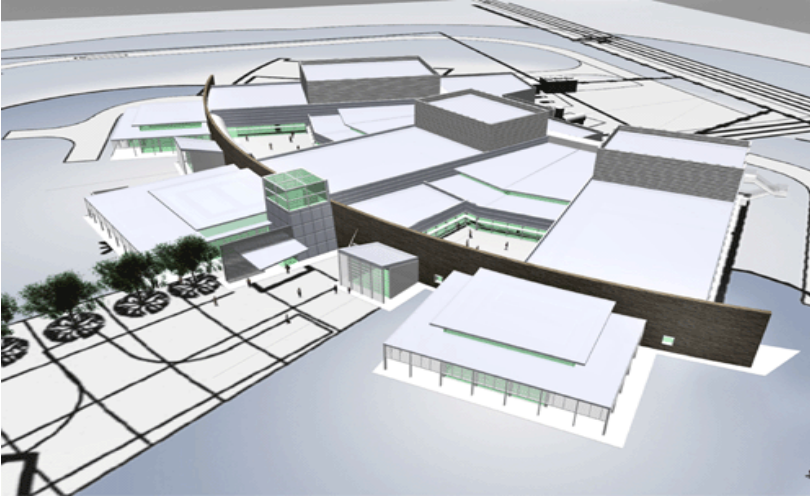
Total Project Costs:
\$9 million

Status:
In Construction

- NMSU is an electric infrastructure system upgrade and Substation connecting the underground distribution grid serving buildings/facilities throughout TA I, II, and IV



Center for Integrated Nanotechnologies (CINT)



Total Project Costs:

\$59 million

Status:

In Construction

- 83,000 sf of Nanoscale Science Research Centers
- Distributed center operated jointly by SNL and LANL
- Two new facilities are included in CINT's scope
 - Core Facility in Albuquerque and a Gateway in Los Alamos



Supplier Partnerships

- Shared information
- Integrated processes
- Mutual improvement plans/shared metrics
- Better value to our customers
- Mutual awareness of expectations and capabilities
- Business best practice



A/E Partners

- Terradigm Inc. (Estimating/Scheduling)
- Siemens Government Services Inc. (Preventative and Corrective Maintenance)
- DWL Architects & Planners of NM (Landscaping)
- Architectural Research Consultants (Full Service)
- Dekker Perich Sabatini Ltd. (Full Service)
- Chavez-Grieves Consulting Engineers (Full Service)
- Merrick & Co. (Full Service)
- Fanning Bard Tatum Architects AIA Ltd (Full Service)
- Bridgers & Paxton Consulting Engineers (Full Service)
- Van H Gilbert Architect (Full Service)
- Garrett Smith Ltd (Full Service)
- McKown Belangers Associates (Interior Design)



Construction Partners General Construction Awardees

- Projects up to \$500K
 - Builtek Contractors, Inc.
 - Del Rio Enterprises, Inc.
 - Engineering Constructors, Inc.
 - MV Industries, Inc.
 - TEF Construction Inc.
- Projects between \$500K and \$4M
 - Engineering Constructors, Inc.
 - MV Industries, Inc.
 - Summit Construction, Inc.



Procurement

- Best Value – Technical evaluation completed for all contractor partners
- Contractor Selection – lowest net price
- A/E partners
 - Firm Fixed Price
 - Time & Material
- Contact: Daniel Stafford 284-6170



Conclusion

- Various type of projects at Sandia
 - Approximately a yearly \$145+ million program into the foreseeable future
- Sliding budgets –the plan changes constantly
- A/E and contractor partnerships are essential to our work
- We continue to seek collaborative partnerships on emerging technologies that support our mission