

Environmental Management System SAND2006-1467P

EMS is a continuing cycle of planning, implementing, evaluating, and improving processes to achieve environmental goals

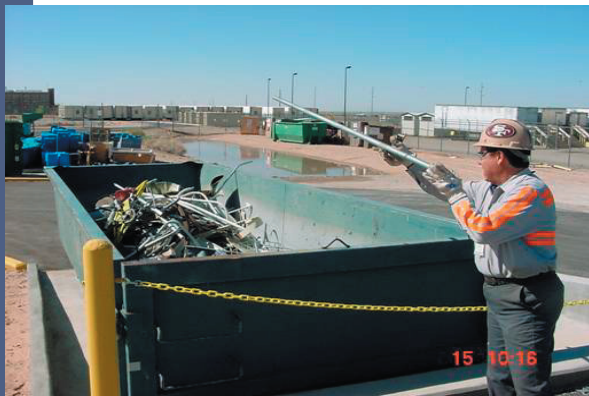
Sandia National Laboratories (SNL) demonstrates its commitment to environmental excellence through implementing the requirements and practices outlined in the Environmental Management System (EMS) that is part of our Integrated Safety Management System (ISMS). An EMS is a systematic approach to address the impacts of an organization's activities on the environment. Potential environmental impacts are identified, evaluated, and prioritized. Processes are then implemented to mitigate potential environmental impacts. Finally, environmental impacts are monitored to ensure that environmental performance goals are being met and process improvement opportunities are identified and integrated into a new, improved version of the EMS.

This Plan-Do-Check-Act cycle is repeated each year, ensuring that SNL environmental performance continues to improve and move towards "best in class" environmental stewardship.



Benefits of Implementing an EMS at SNL

- Provides a proactive, integrated, and consistent approach to identify, manage and reduce environmental risks and liabilities
- Improves compliance with environmental regulations
- Saves money through a reduction in the consumption of energy and materials
- Improves SNL's image among regulators, customers, and the public
- Promotes long-term stewardship of our natural resources



For additional EMS information,
please visit:
<http://EMS.sandia.gov>



Environmental Management System

SANDIA'S ES&H POLICY (CPSR 400.1)

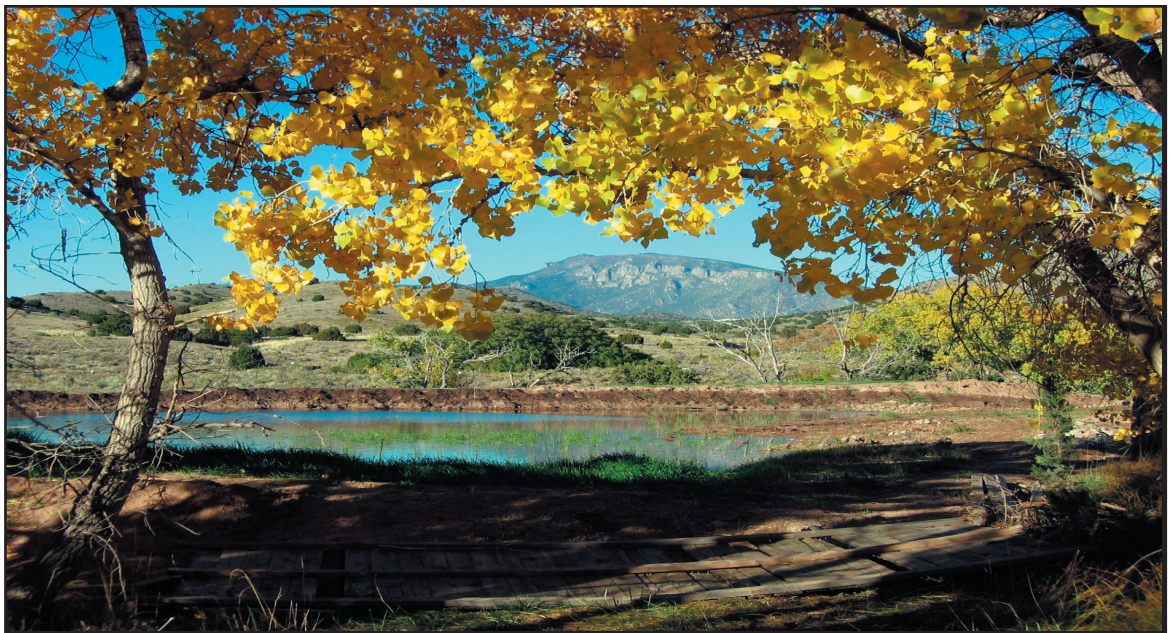
Sandia has adopted the core values of: integrity; excellence; service to the nation and each other; and teamwork. Sandia strives to:

- Plan work, incorporating safety awareness, protective health practices, environmental management, pollution prevention and stewardship of resources
- Evaluate, monitor and manage risk with effective ES&H systems
- Implement controls to prevent injuries, hazardous exposures, or releases
- Do quality work while protecting people, the environment, and our nation's security
- Continually improve our ES&H performance and incorporate Lessons Learned
- Communicate ES&H issues to our employees, the community, regulators, and stakeholders

YOUR ROLE IN EMS IMPLEMENTATION

EMS implementation is required by DOE as part of the ISMS. It is important to understand your role to ensure that EMS/ISMS implementation is a success. What can you do?

- Know Sandia's ES&H Policy
- Identify and document potential ES&H hazards associated with the work you perform (your environmental coordinator can help!)
- Identify steps you can take to minimize the risk of ES&H impacts in your work
- Be proactive! Identify steps to conserve energy, reduce waste, conserve water, and purchase environmentally-friendly products
- Visit SNL's Environmental Management System website (<http://ems.sandia.gov>) to learn more



Sandia is a multiprogram laboratory operated by Sandia Corporation, a Lockheed Martin Company, for the United States Department of Energy's National Nuclear Security Administration under contract DE-AC04-94AL85000.