



# CS&T Text Related Product Descriptions

Travis Bauer  
505-284-8723

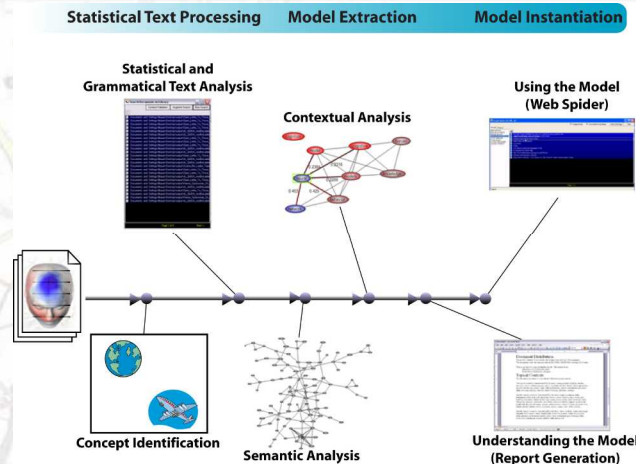


# CS&T Related Products

- STANLEY
- Sandia Analyst Aide
- Views Backend/Threatview Prototype
- Sounding Board
- ESC Investigator
- Data Warehouse Server/Client
- Ontology Helper



# STANLEY Library



*The STANLEY library uses different techniques to create models.*

## What are example applications?

- Any application where one wants to integrate Sandia's cognition text analysis capability into some new application.
- Finding new relevant documents
- Understanding how a person or source has changed across time.

## What is it?

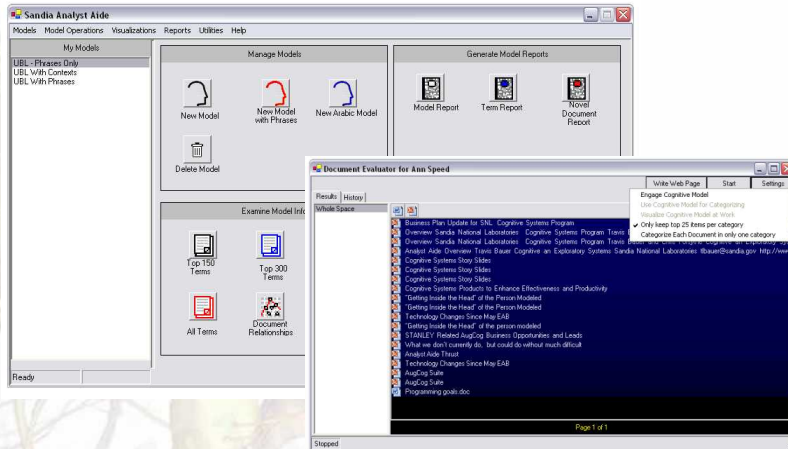
Text analysis library designed for building and utilizing models of individuals from text that they produce or access

## What are the main features?

- Reusable library that programmers can implement into new applications.
- Flexible implementation of text analysis algorithms
- Identification of key concepts, relationships, and contexts from text documents.
- Web spider for evaluating new information based on a previous analysis.
- Generation of reports in MS Word describing key characteristics of an individual based on the text analysis.



# Sandia Analyst Aide



*The Analyst Aide exposes most of STANLEY's functionality*

## What are example applications?

- Understanding the “big picture” of what the key concepts and relationships are for a person.
- Look at how a particular term or group of terms has become more or less important across time.
- Find documents that a person is likely to find of value.
- Query a model of an individual for related terms and documents.

## What is it?

Application for building models of individuals from text they produce as well as understanding and utilizing those models.

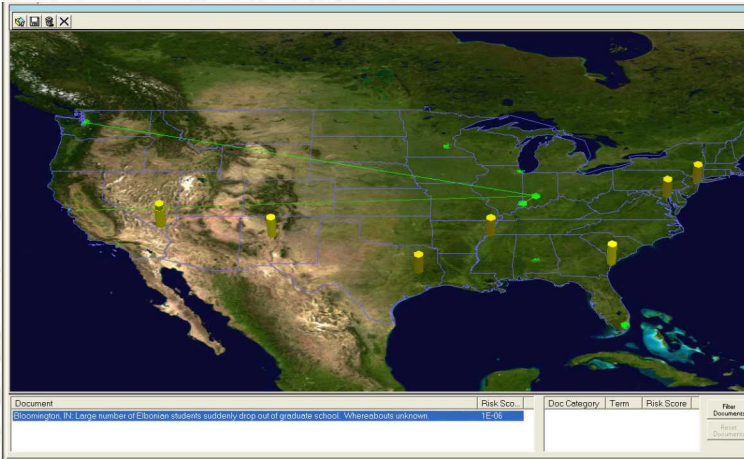
## What are the main features?

- Convenient interface to most of the features in the STANLEY library.
- Manage multiple models at one time
- Track how a person changes across time.
- Use a model to find new information on the web or evaluate new documents.
- Create graphical visualizations of the relationships among models.





# Views Backend/ Threatview Prototype



*Documents can be plotted geographically*

## What is it?

Server version of STANLEY with the capability of displaying documents geographically

## What are example applications?

- Letting a third party application provide data or query STANLEY across a network.
- Letting a user see how geographical locations that may be related based on available documents.

## What are the main features?

- Server interface lets other applications add in new documents and query for information through a network interface using XML
- Identify the geographical locations mentioned in a document.
- Plot documents on a map based on the geographical locations listed in them.
- Shows links among documents graphically on the map.

# Sounding Board



*User can query multiple expert models at one time.*

## What is it?

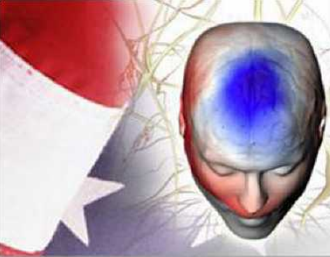
An application that lets you query and explore multiple models at one time.

## What are example applications?

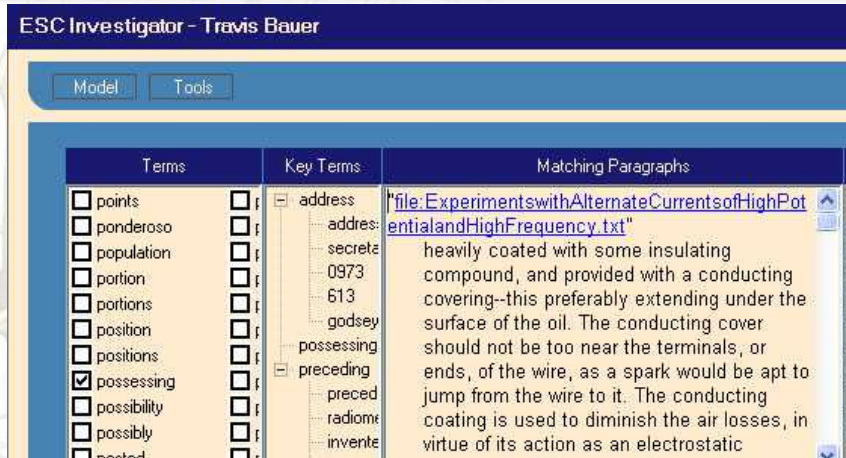
- Helping the user determine what human expert most likely understands a particular situation.
- Helping a user to find new related concepts they may not have previously known about.
- Helping the user to find texts showing how an expert uses particular terms.

## What are the main features?

- Free text query allows the user to describe a situation.
- Multiple models read query and display themselves if they think it is in their area of expertise.
- User can find related terms for a particular model as well as texts used to create the model.



# ESC Investigator



*ESC Investigator provides flexible exploration of document sets*

## What is it?

An application for exploring a particular set of documents

## What are example applications?

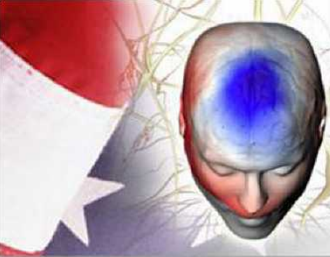
- Helping a user to find new related concepts they may not have previously known about.
- Helping the user to find texts showing how an expert uses particular terms.

## What are the main features?

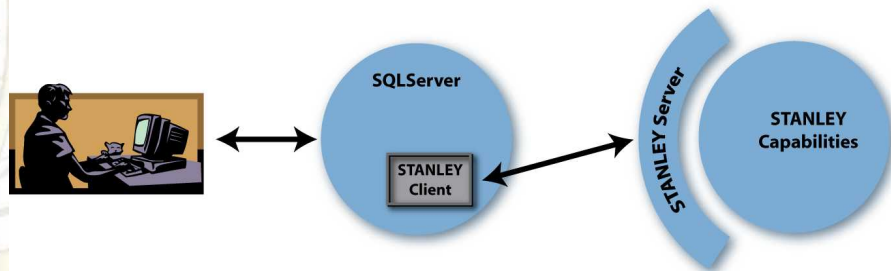
- Free text query allows the user to describe a situation.
- Check box listing all terms so the user can select terms of interest.
- User can find related terms for a particular model as well as texts used to create the model.







# Data Warehouse Server and Client



*The user accesses STANLEY analysis through an SQL server*

## What are example applications?

- When a user wants to create a model of an individual, but the individual's documents are located in a database.
- When you want to deploy the software to an organization, but don't want to install the software on every individual's desktop.

## What is it?

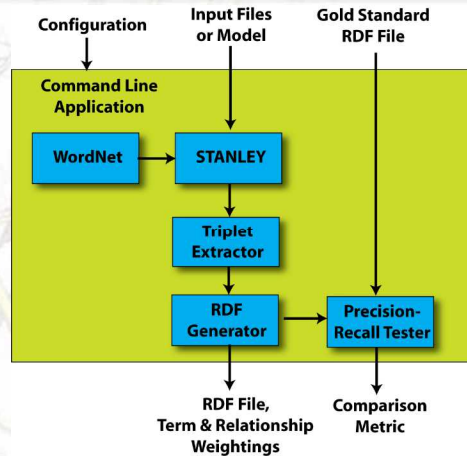
An interface to STANLEY that lets its features be accessible directly from a SQL server database

## What are the main features?

- Complete integration with SQL server – STANLEY features become available as SQL functions.
- Flexible server architecture lets the analysis be done on any machine, not just the server.
- Querying for documents and key terms.
- Querying for changes across time.



# Ontology Helper



*A multi-stage process is used to create seed ontologies*

## What is it?

A command line application that finds key terms and relationships for an ontology from a corpus of text.

## What are example applications?

- When the user wants to create an ontology from a large corpus and doesn't know where to begin. This application can create a "seed" ontology which the user can subsequently edit.

## What are the main features?

- Extraction of triplets (subject/verb/object) from text.
- Identification of key terms and phrases.
- Export to RDF format for compatibility with other ontology tools.