

# Sandia National Laboratories' ElectroNeedle™ Biomedical Sensor Array

*The ElectroNeedle™ Biomedical Sensor Array will provide rapid, on-demand, multiplexed, point-of-care biomedical assays for medical diagnosis in emergency, battlefield, home healthcare, and remote settings.*

*The significance of ElectroNeedle™ technology has been recognized by both the commercial sector and by the medical community. Two new biotechnology companies — New Mexico Biotech, Inc., and Life BioScience, Inc., — have been formed explicitly for ElectroNeedle™ commercialization.*

*Not even a single drop of blood needs to be drawn from the patient because the sensors can make measurements through the skin.*

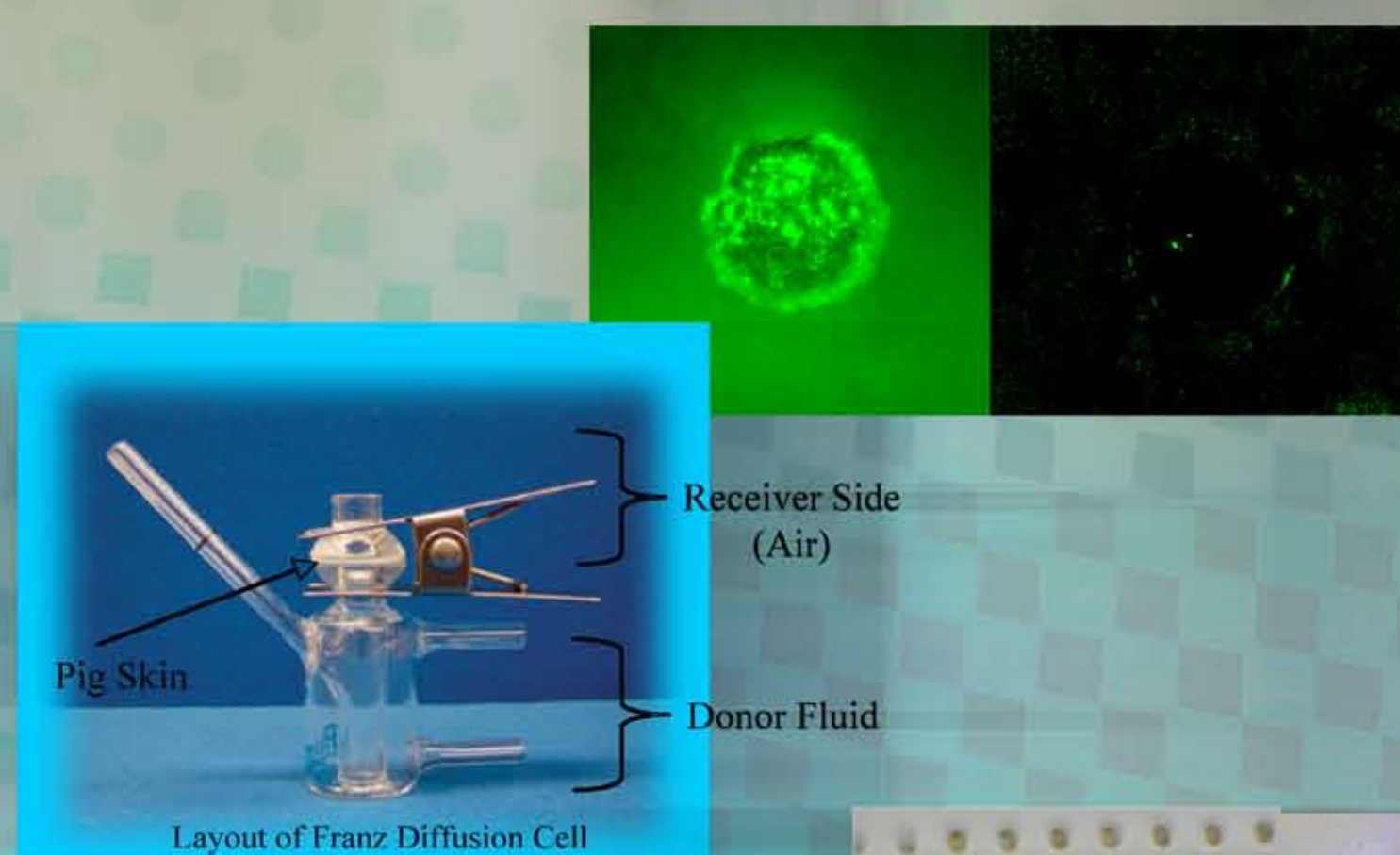
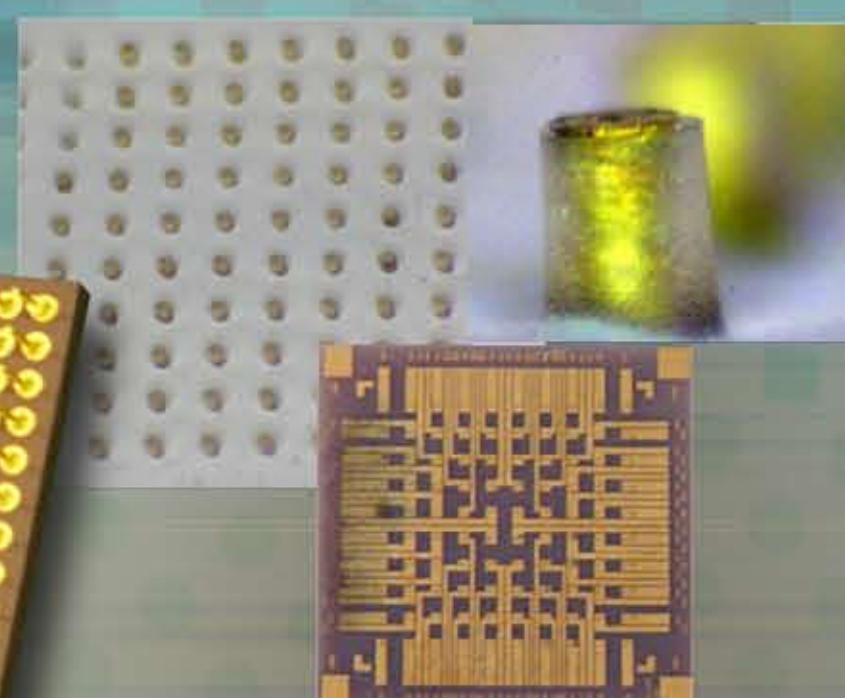
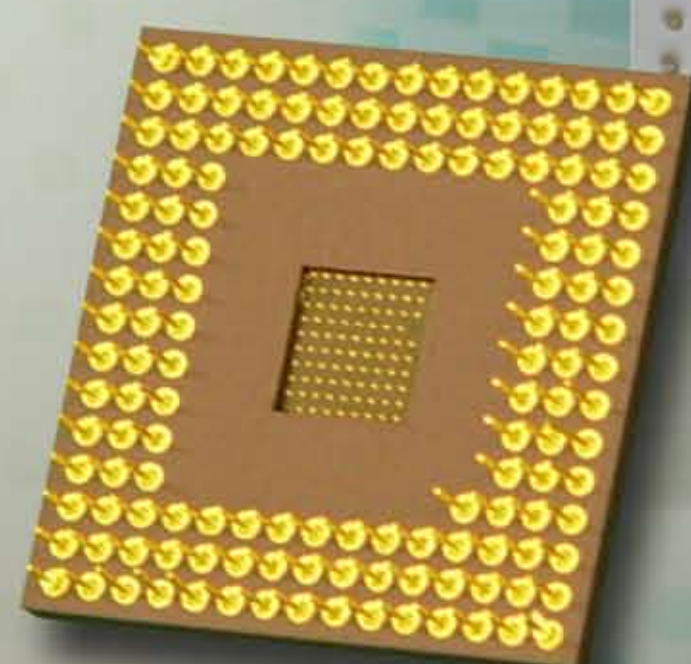


Fig. 3 Franz cell used for Electro-Needle® measurements in pigskin.



**Sandia National Laboratories**