

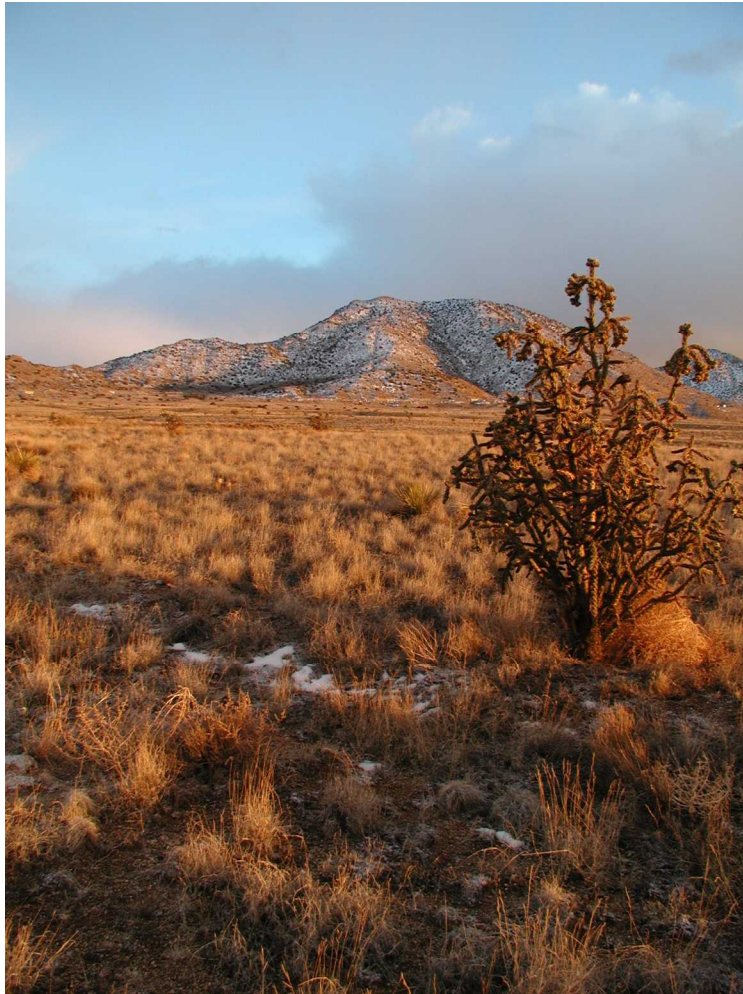
Long-term Environmental Stewardship at Sandia

April 30, 2008

**Su Hwang
Environmental Planning Department**



Long-Term Environmental Stewardship (LTES)



- The LTES mission ensures long-term protection of human health and the environment.
- It also provides proactive management toward sustainable use and protection of natural and cultural resources affected by Sandia National Laboratories operations and operational legacies.



What does the LTES Program do and Why?

- The LTES Program promotes the long-term stewardship of a site's natural and cultural resources throughout its operational, closure, and post-closure life-cycle.
- The LTES Program is the umbrella program for long-term stewardship (LTS) that is responsible for the long-term monitoring and maintenance of former Environmental Restoration Sites.
- This is directed through DOE Order 450.1, *Environmental Protection Program*. The LTES Program is one of 17 Environmental Programs currently implemented at Sandia for the protection of the environment.



What's happening in LTES for FY08?

- **The LTES program is working toward creating a corporate policy that would require all projects to incorporate environmental life-cycle (cradle to grave) in their planning activities. Sandia is the first DOE Nuclear Weapons Complex Site to consider an environmental life-cycle cost model.**
- **We are developing a life-cycle cost model to proactively create a funding mechanism for future cleanup and disposition costs.**



What's happening in LTS (legacy) for FY08?



The LTS Program is applying more than \$2.8 M to conduct long term monitoring activities required by the New Mexico Environment Department.

- Sampling and data analysis at more than 50 groundwater wells**
- Well maintenance / replacement**
- Site inspections, maintenance, and vadose zone sampling**



Outreach activities



- **National Atomic Museum
LTES Exhibit – Ongoing**
- **Community Checklist
Work Group– Held 4/30/08
(prior to this meeting)**
- **Fall LTES Newsletter –
Mail to community mailing
list in October 2008.**
- **To keep posted on
upcoming activities,
please visit our website at**

<http://ltes.sandia.gov/>