

# Border Management Systems Model

**INTERNATIONAL BORDER  
MANAGEMENT SYSTEMS**

# Why utilize a systems model?

---

- **All levels of border security policy, planning, and operations need to be considered as an integrated, interactive whole**
- **What happens in one area inevitably impacts another**
- **No person or organization operates in a vacuum**
- **The systems model provides an integrated framework by which we can consider all of the components of border management**

# Model Mission Statement

---

***Strategically deploy a system of  
personnel, physical elements, and information systems  
to implement border policies  
regulating the flow of people and goods across  
national boundaries,  
and defending against national security threats.***

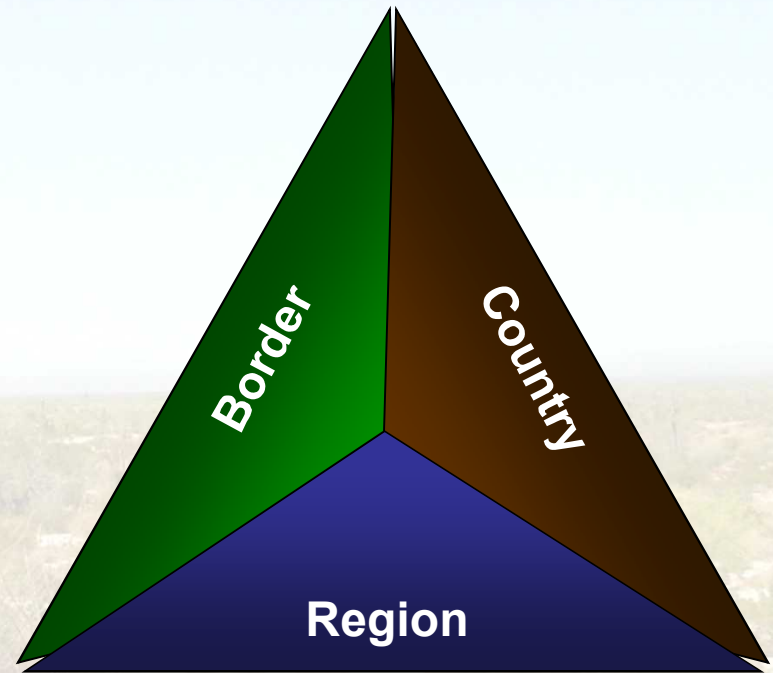


# Model Principles

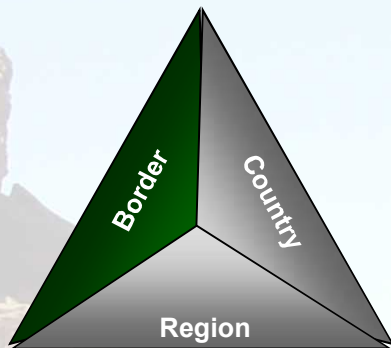
---

- **Command Structure Clarity**  
Clear top-down articulation of policies, postures, and priorities
- **Information-Driven Operations**  
Operators should be informed by timely intelligence and event analysis
- **Deterrence through Enforcement and Defense-in-Depth**  
Enforcement and defensive measure send a message to challengers and adversaries
- **Technology Deployment as a Force Multiplier**  
Technology is not a substitute for human resources, but can enhance capabilities
- **Flexibility to Address Dynamic Challenges**  
The system must respond and adapt to ever growing and adapting challenges

# Border Management Systems Model



# Border System Elements

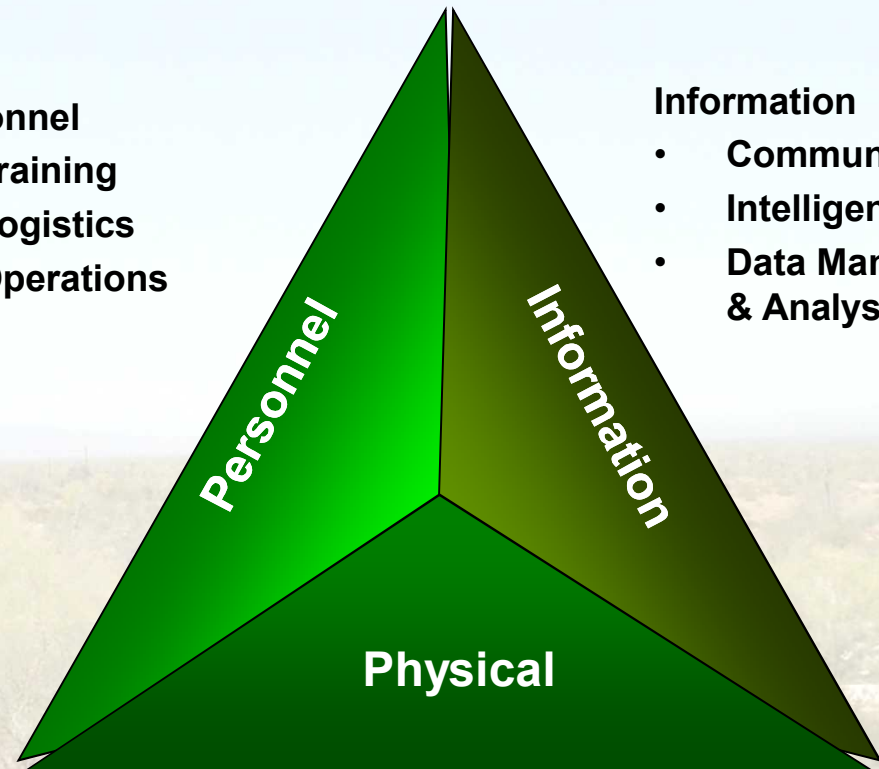


## Personnel

- Training
- Logistics
- Operations

## Information

- Communications
- Intelligence
- Data Management & Analysis



## Physical

- Infrastructure
- Equipment & Technology
- Logistics

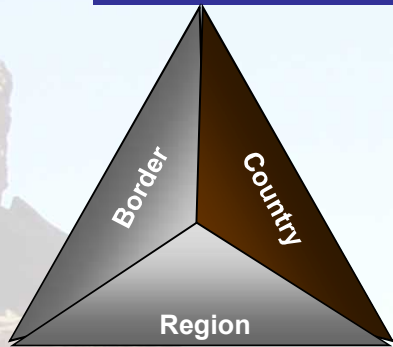
Points of Entry  
and areas in  
between in the  
domains of

- Land
- Water
- Air





# Country System Elements

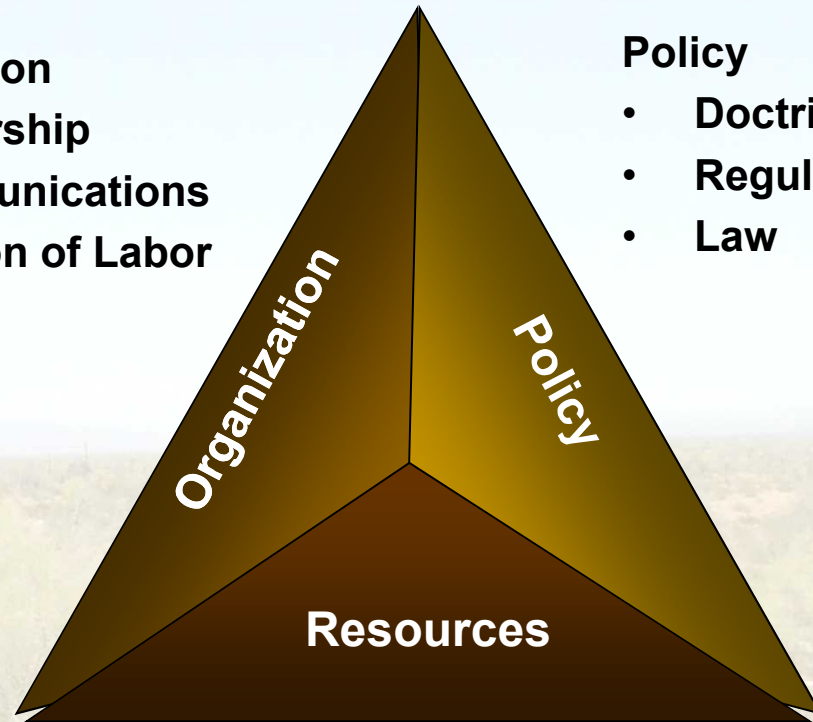


## Organization

- Leadership
- Communications
- Division of Labor

## Policy

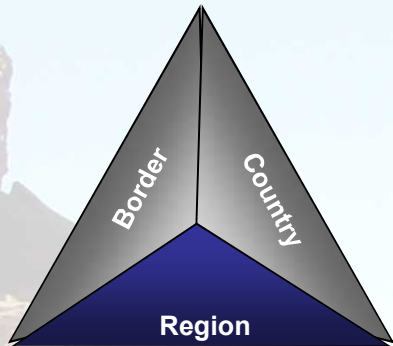
- Doctrine
- Regulations
- Law



## Resources

- Financial
- Technical
- Human

# Regional System Elements

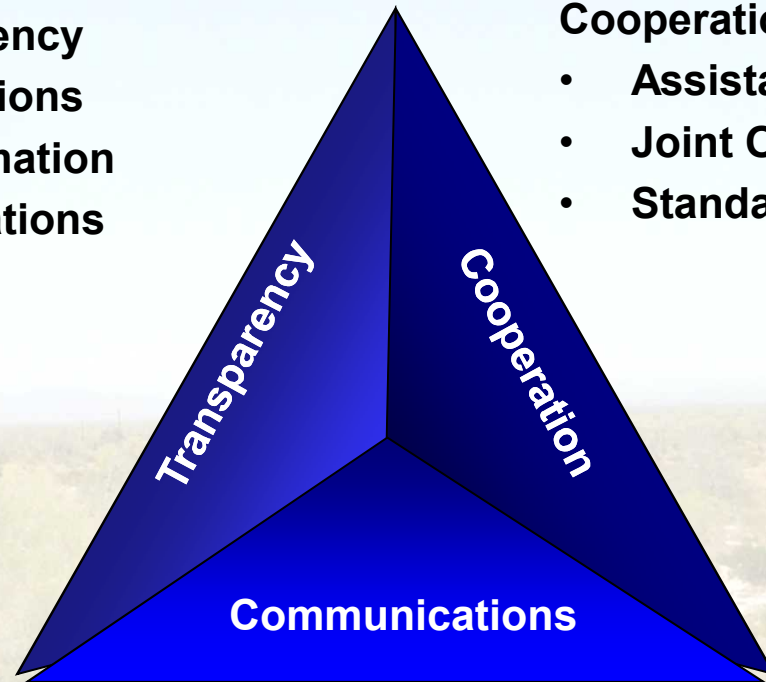


## Transparency

- Intentions
- Information
- Operations

## Cooperation

- Assistance
- Joint Operations
- Standards



## Communications

- Operational
- Bilateral
- Multilateral



# Discussion

- What defines your border management system?  
Civilian, Military, Both?
- What, in your opinion, would you like to do more of, better, or differently to get the outcomes you desire at the border?

