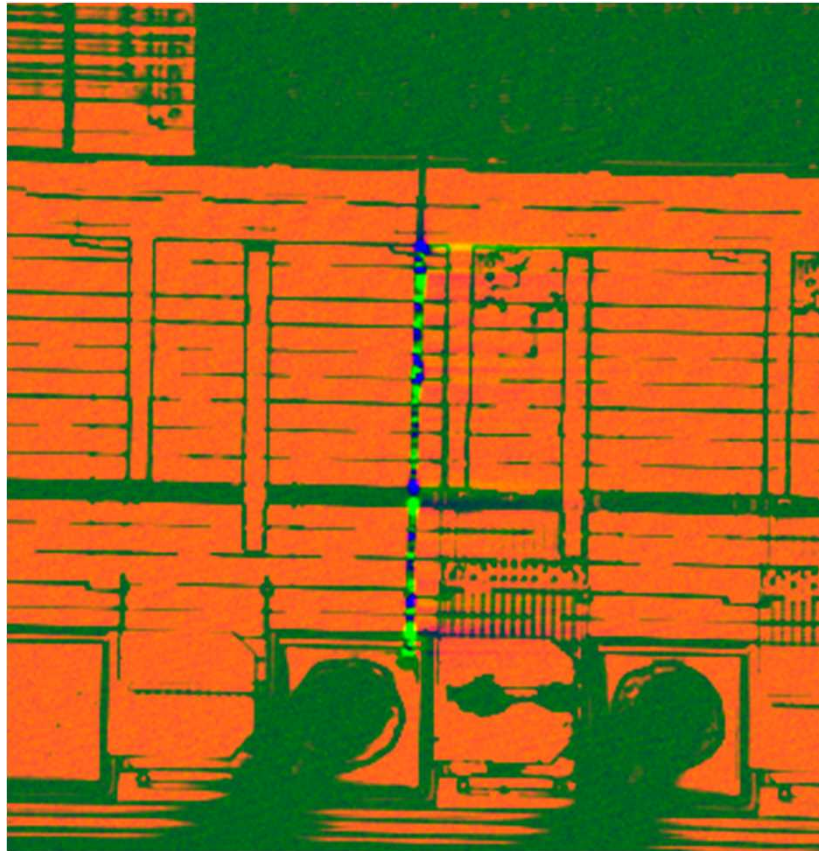


The FIB conductor is shorted to an underlying power bus where the TIVA contrast abruptly stops. No direct bias was applied. The TIVA voltage signals, yielding the black and white speckled pattern, are believed to result from laser heating of “thermocouples” produced from random Pt grains along the deposited line.



The FIB conductor is shorted to an underlying power bus where the TIVA contrast abruptly stops. No direct bias was applied. The TIVA voltage signals, yielding the blue and green speckled pattern, are believed to result from laser heating of “thermocouples” produced from random Pt grains along the deposited line.