

# **Facilities Engineering Management III**

## **Sandia National Laboratories**

**9/8/08**

**Orlando L Griego  
Building Manager**





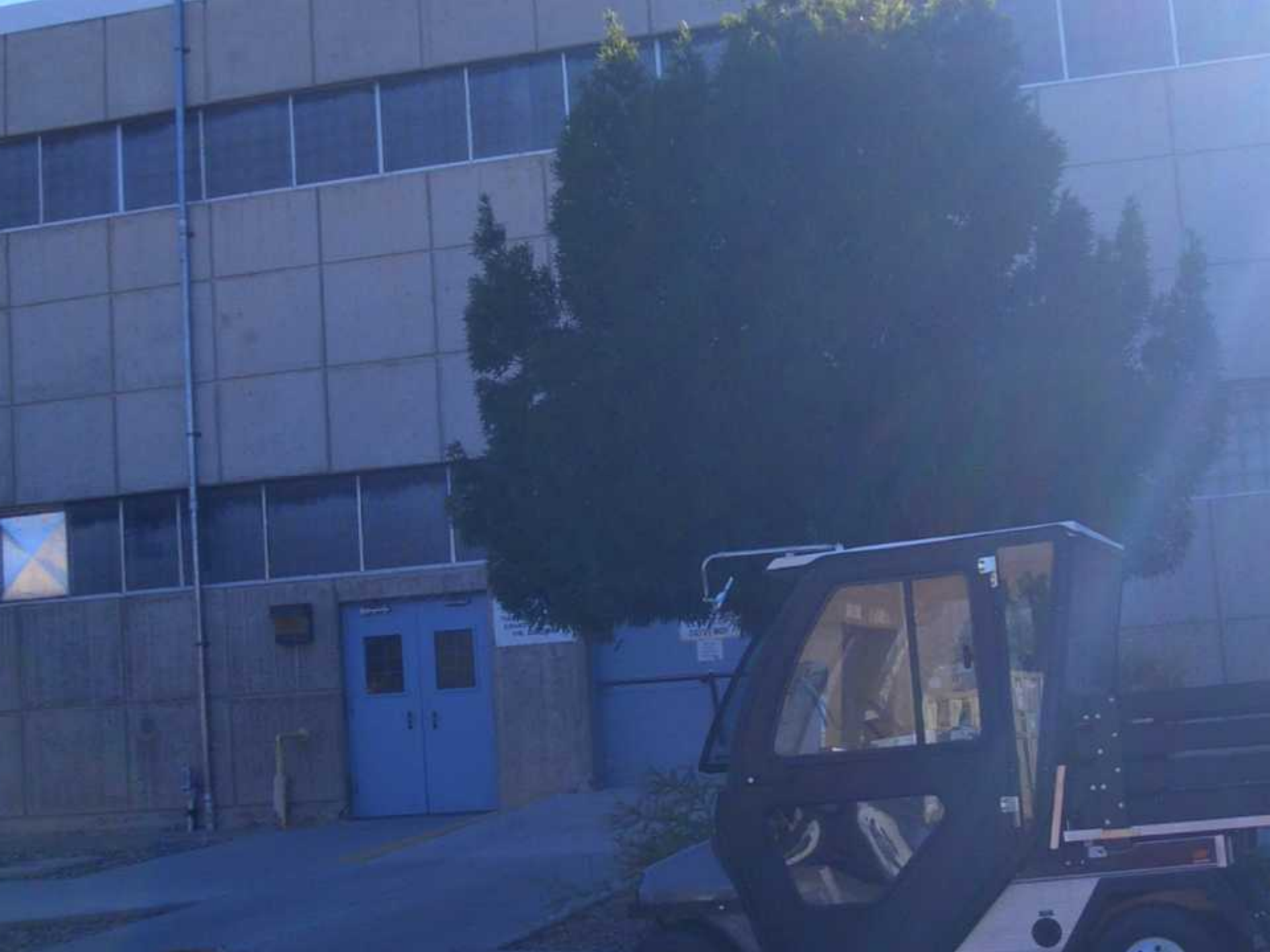














840




























100 PSI  
200 PSI  
300 PSI  
400 PSI

0 = OFF  
152 ON



 POWERS

**DANGER**  
ELECTRICAL EQUIPMENT  
NEVER OPEN  
DOOR WHILE RUNNING



EMERGENCY  
STOP



START



STOP



AUTOMATIC SHUTDOWN  
CONTROL CIRCUIT



AIR PRESSURE  
G.P.S.



AIR SHUTDOWN SCHEDULE

0 PSI	SHUT DOWN
0 PSI	10 MIN. WARM-UP
0 PSI	FAST WARM-UP
0 PSI	NORMAL OPERATION









The image shows a close-up of industrial machinery. On the right, a large, curved, yellow-painted metal structure with a perforated mesh surface is visible. A yellow warning label is affixed to this structure. In the center, a grey metal control box is mounted on a green-painted metal frame. Two vertical metal rods pass through the frame above the control box. To the left, a white vertical panel is partially visible. The background consists of orange and green painted metal surfaces.

**CAUTION**  
ROTATING  
EQUIPMENT











GRIEGO, ROBERT

WRIGHT, J.

3RD SHIFT

Rogers

SMITH, LARRY



INSPECTION RECORDS

**EMERGENCY  
STOP BUTTON**

• 2000年12月，中国加入世界贸易组织。

• **BRUNNEN** 40.27

• **Section 9** 901-904

THE UNITED STATES OF AMERICA  
DEPARTMENT OF JUSTICE  
FEDERAL BUREAU OF INVESTIGATION  
WASHINGTON, D. C. 20535





FORCED DRAFT PRESSURE



BOILER OUTLET WATER TEMP



FUEL OIL BURNER PRESSURE



BOILER MASTER CONTROLLER



PERCENT OXYGEN CONTROLLER



INDUCED DRAFT FAN CONTROLLER



DRUM LEVEL CONTROLLER



ECONOMIZER AIR FLOW CONTROLLER



FUEL OIL BURNER PRESSURE

INDUCED DRAFT FAN CONTROLLER

INDUCED DRAFT FAN CONTROLLER



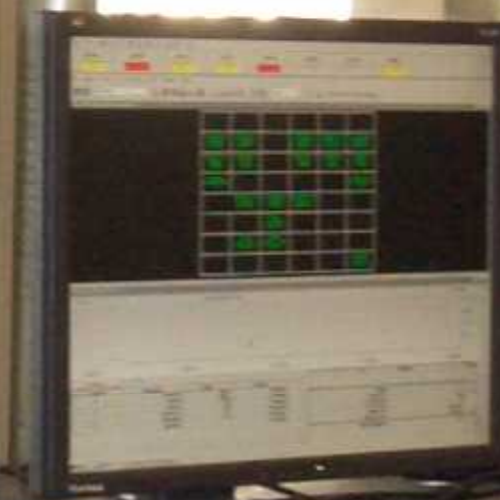




TUS

NO. 5

NO. 6



UNION STEAM GENERATOR

DATE 12-8-49 TEST NO. 5000

HEATING SURFACE 1200 SQ

WORKING PRESSURE 150 LB

CONTRACT 90065 ASSEMBLER

BUILT BY

Smiley Equip. & Const. Co

**SMECO**

Boiler Contractors

Kansas City,

Missouri

**MAINT.**





→ HIGH PRESSURE STEAM →



















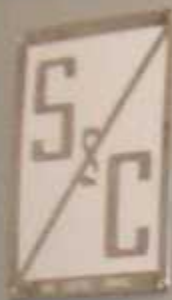












**B**

Chiller 2  
3rd







MBC-A



MBC-B





655 South















