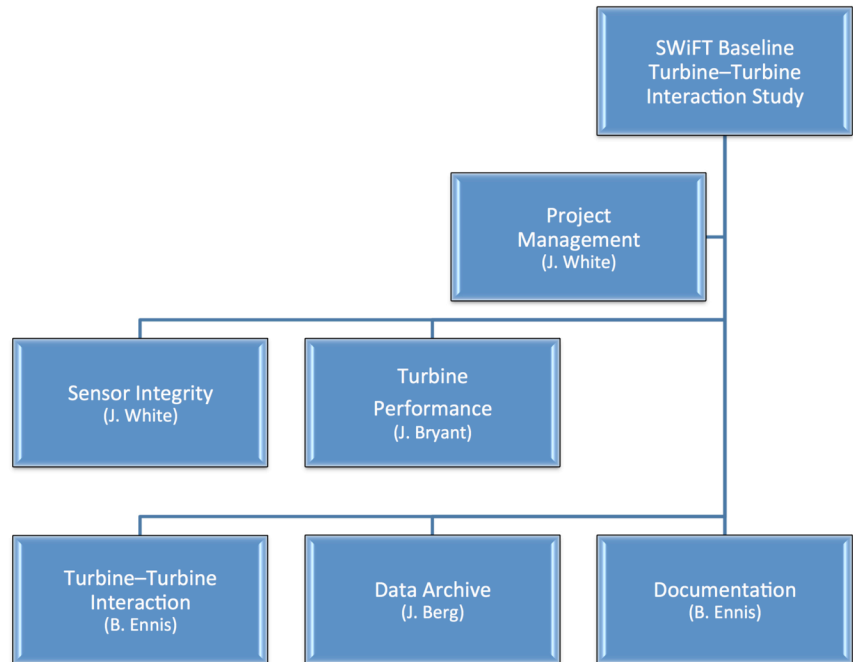


Scaled Wind Farm Technologies Facility Baselining Project Accelerates Work

With the [Scaled Wind Farm Technologies \(SWiFT\) facility](#)'s basic operation and data collection now operational, the SWiFT Baselining Team met at Sandia on February 20th to kick-off the SWiFT Facility Baselining Project's major work phase.

The project's goal is to achieve complete operational readiness and verification of all SWiFT controller, data acquisition, and instrumentation systems for future research efforts. To complete this project, the work has been organized into the major work packages as shown. An International Electrotechnical Commission (IEC) power performance test of all turbines was identified as the critical project path, and work is currently focused with this as a priority.



SWiFT Baselining Project work packages and work-package managers.

Exceptional Service in the National Interest