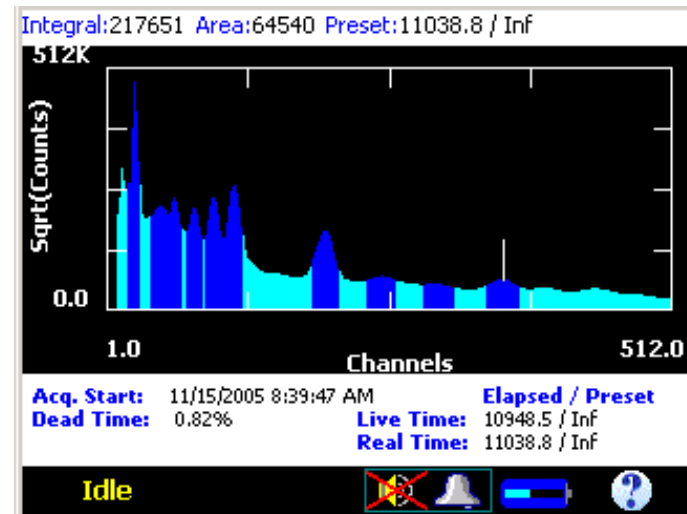
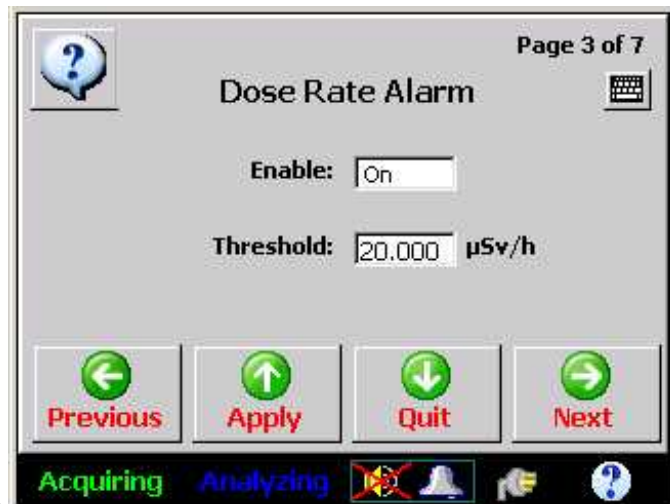
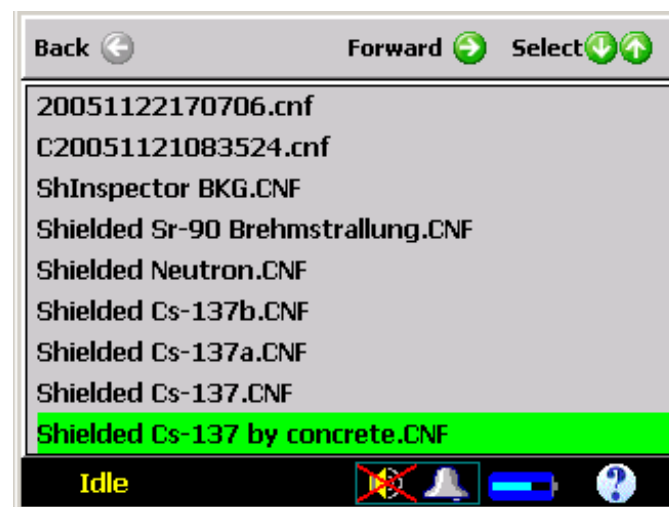
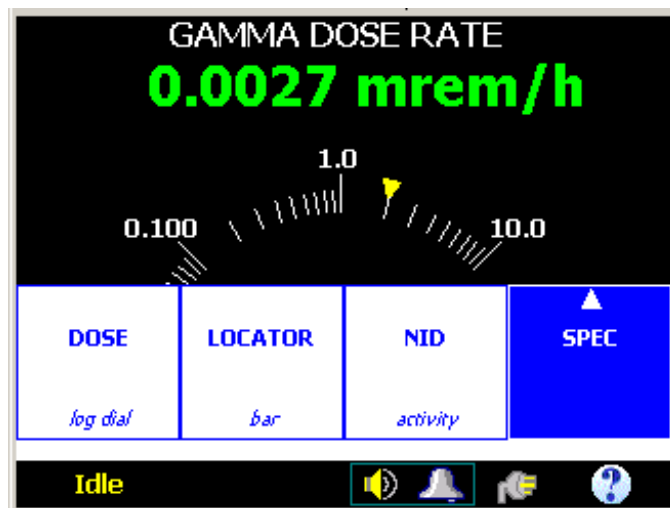




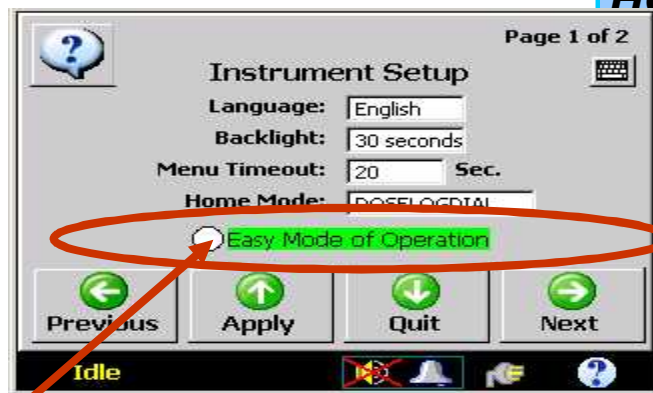
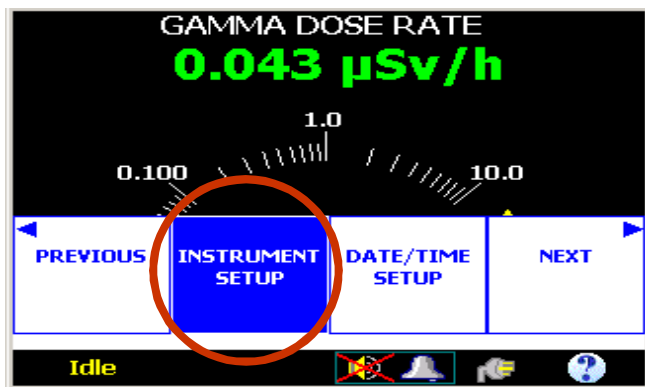
Inspector 1000 in Expert Mode





In Expert Mode Only

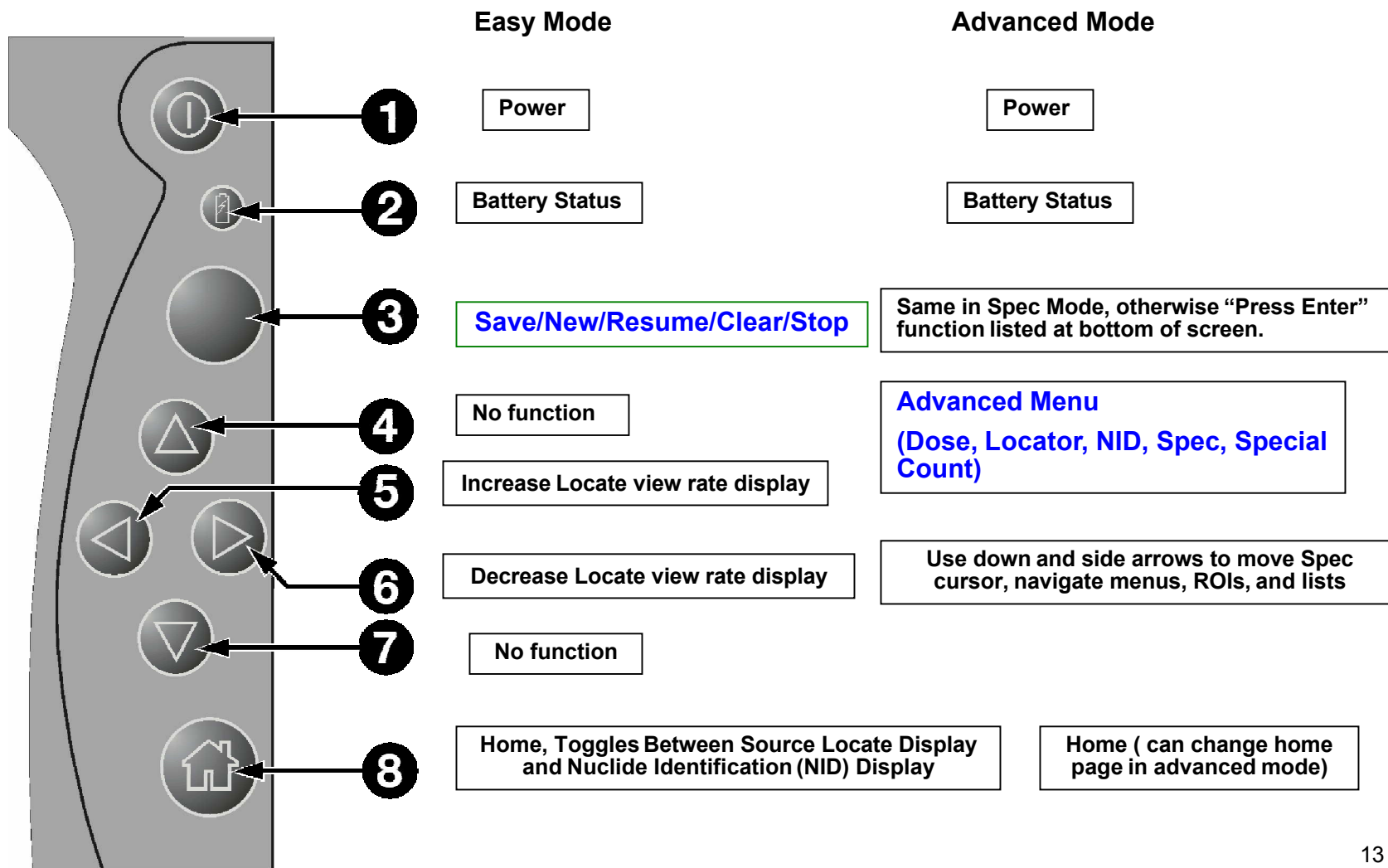
- Preferences can only be changed in the field while in EXPERT mode
- To change from EASY MODE to EXPERT mode
 - Press the HOME button and hold. While holding, press ENTER (green circle button) simultaneously
 - Select “NEXT” – “NEXT” – “INSTRUMENT SETUP”
 - Disable the option: “Easy Mode of Operation”
 - Always Press Home and Enter to access “Setup” options
 - Press “APPLY” and then “QUIT”



- Recommendation: Change the “Menu Timeout” to 20 Sec



Easy Mode and Expert Mode Front Panel Controls

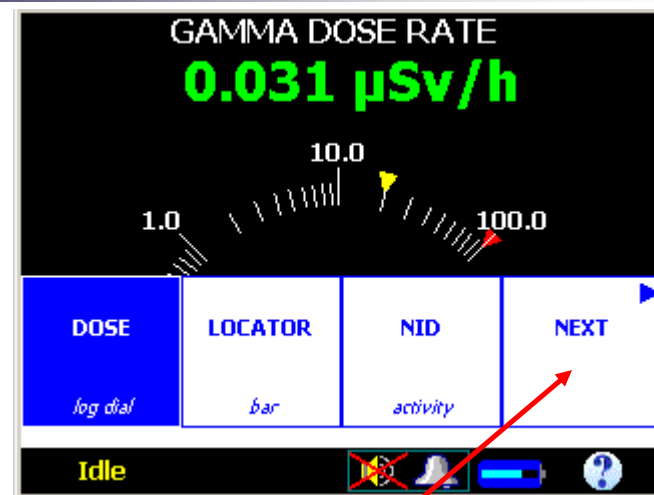
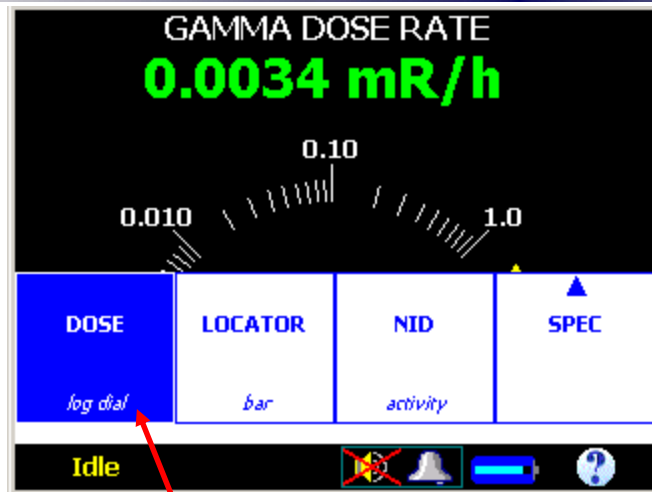




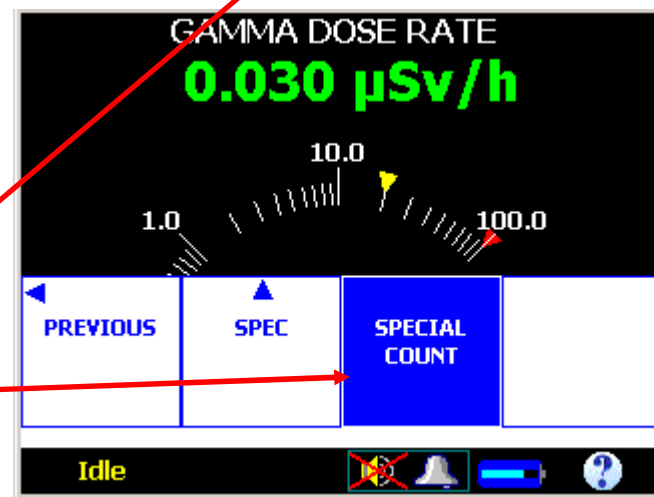
Inspector 1000 Expert Mode Main Menu



- Main menu with “Special Count” disabled
- Press the Up Arrow for the main menu

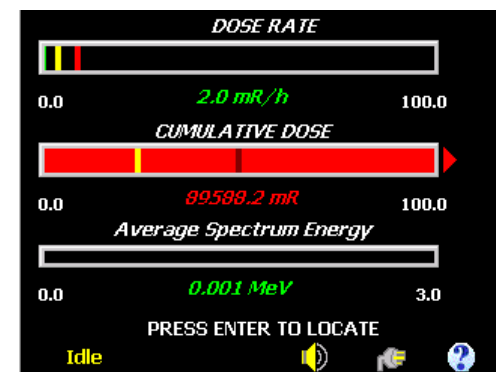
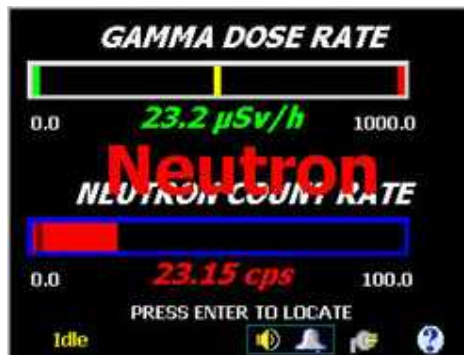
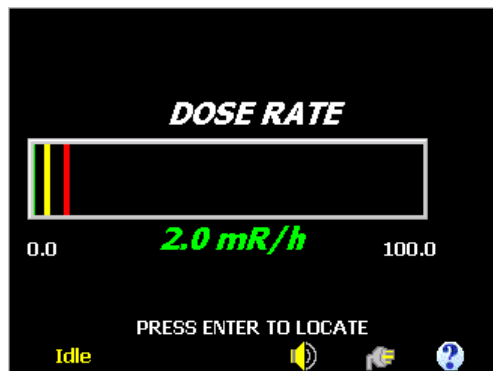
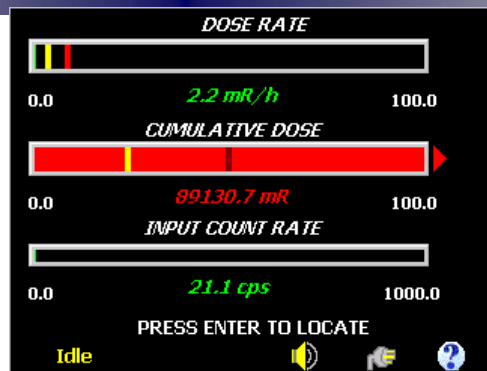


- Main menu with “Special Count” enabled

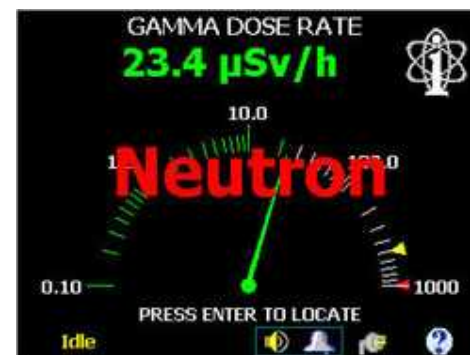




Dose Rate Screen Display Options (Expert Mode)



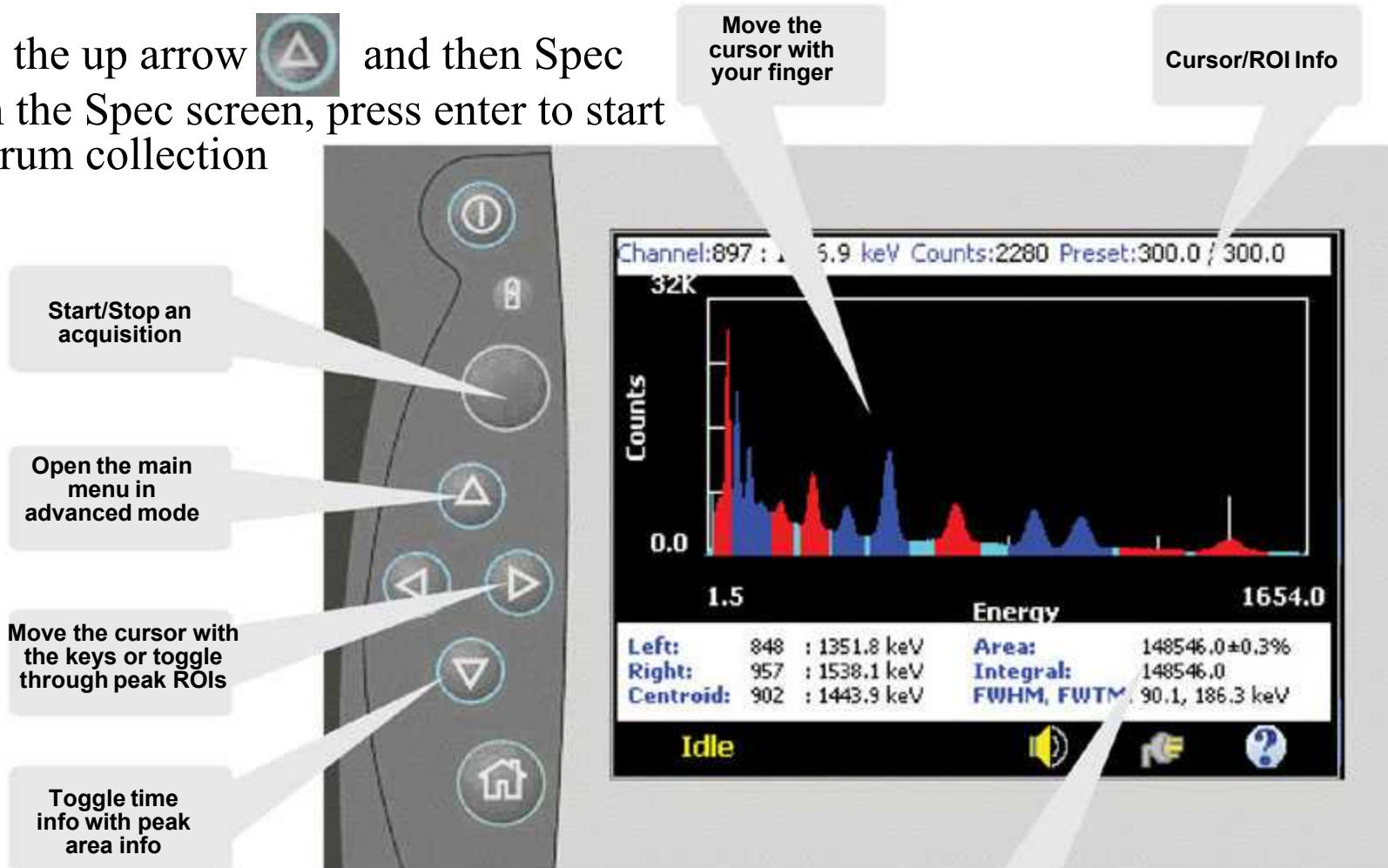
Neutron
Count Rate
Alarms





Spectrum and Full Spectroscopy Options Available In Expert Mode

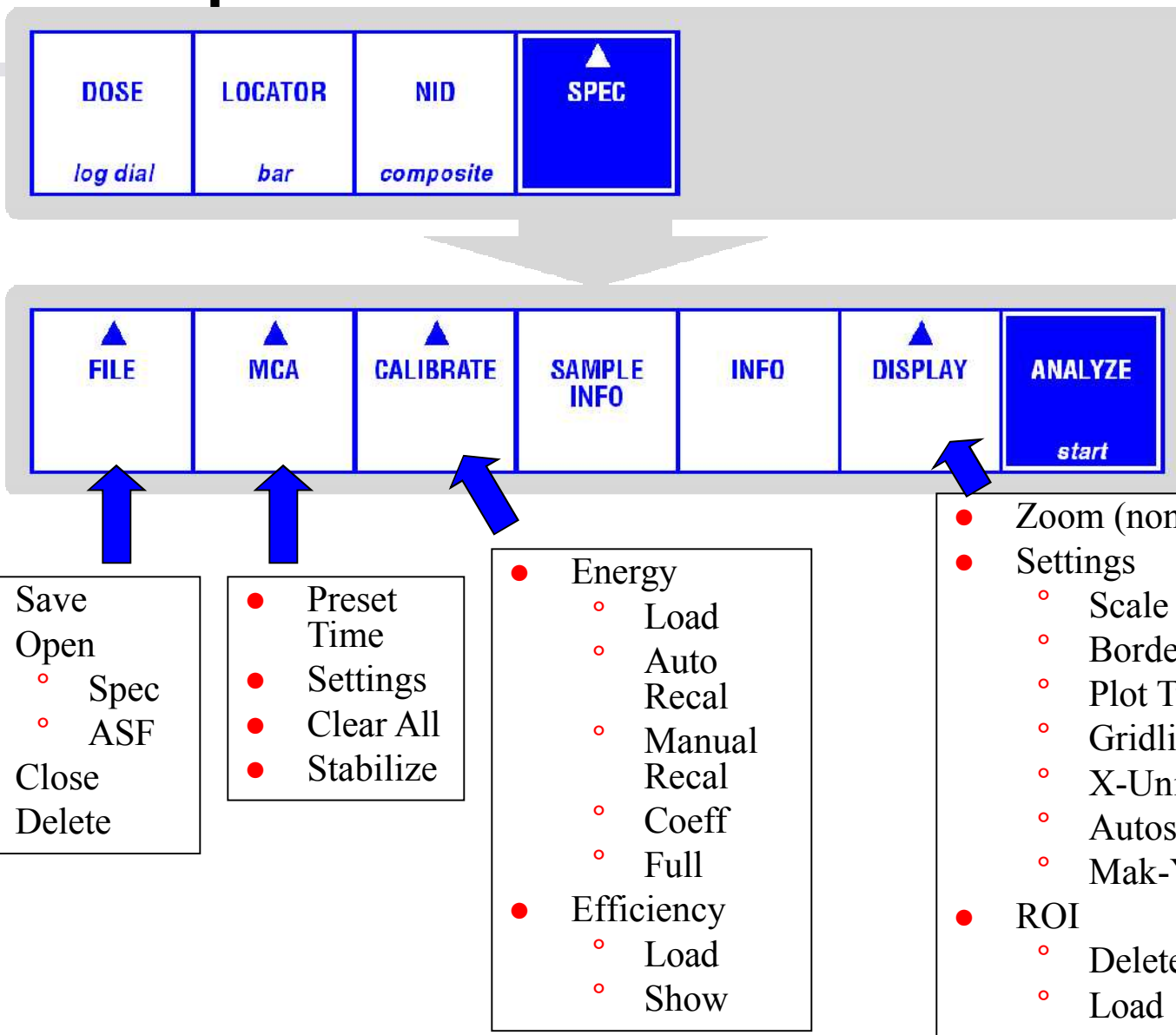
- Press the up arrow  and then Spec
- From the Spec screen, press enter to start spectrum collection



- Touch the Status Page to toggle among information bars



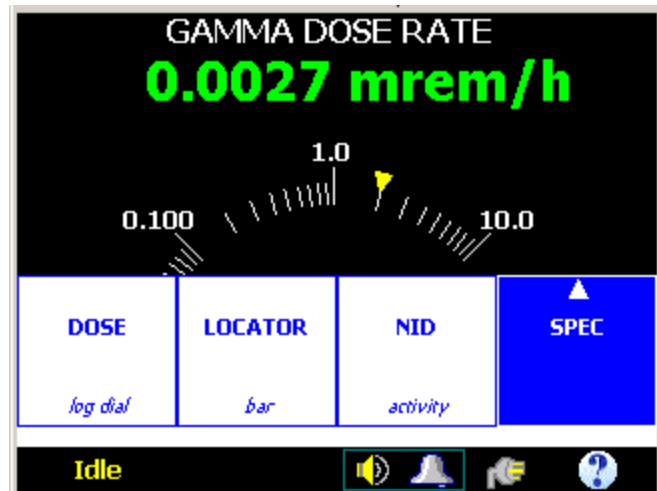
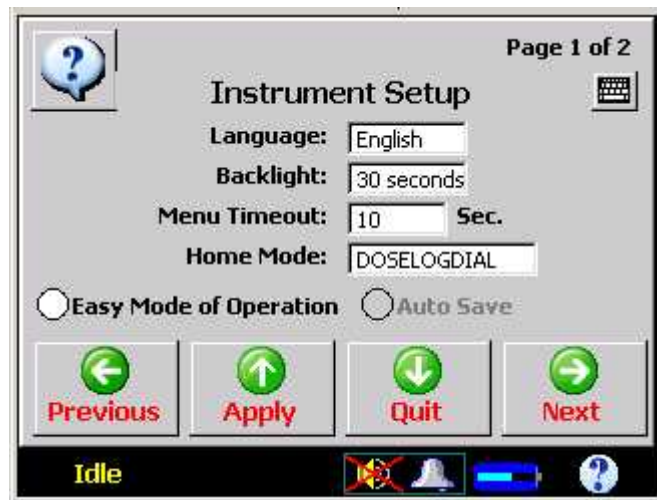
Spec Menu Tree





Expert Mode Exercise

- Place Inspector in expert mode (Home+Enter, Next, Instrument Setup)
- Using the Up Arrow, select the source Locator Mode and locate sources in the room
- Using the Up Arrow, monitor the dose rate of the source
- Using the Up Arrow, place the unit into Spectroscopy View
- Use the green button to collect a spectrum
- Using the Up Arrow, select NID to view identified isotopes
- Use the green Enter button and the touch screen to save the file





See Appendix F

-Inspector 100 maintenance and software

