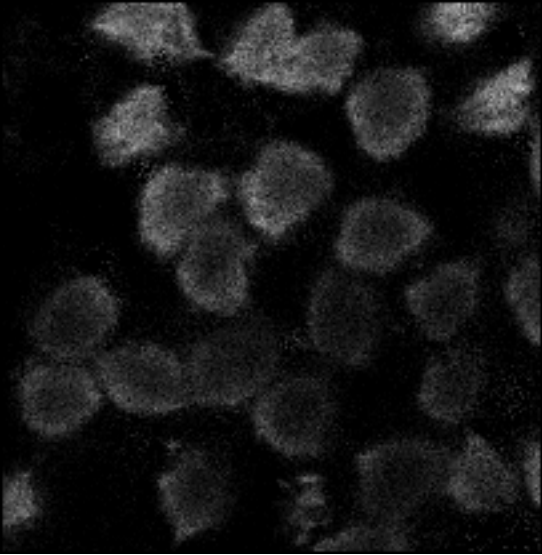
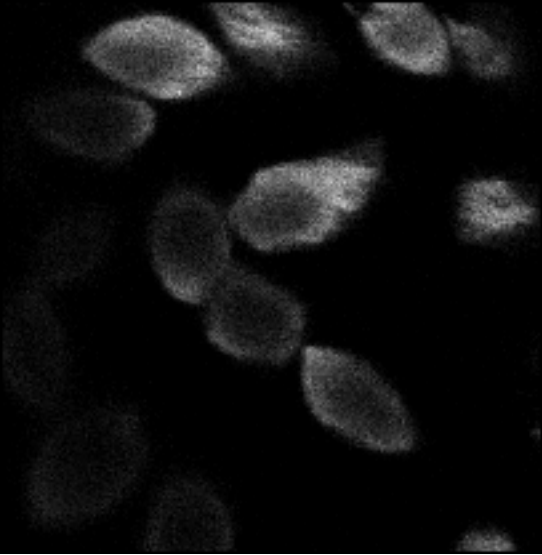
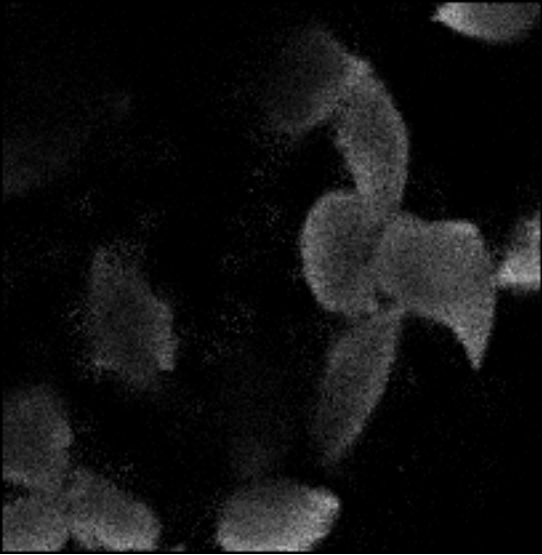


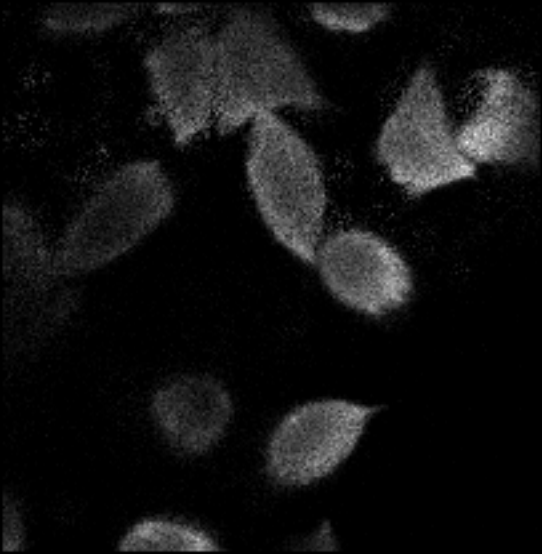
SAND2012-9625P



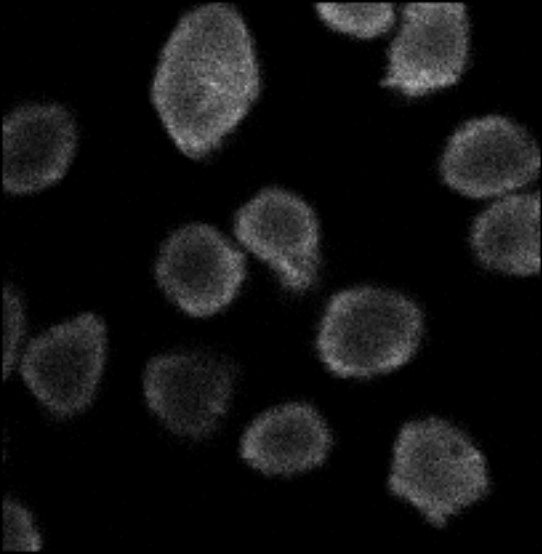


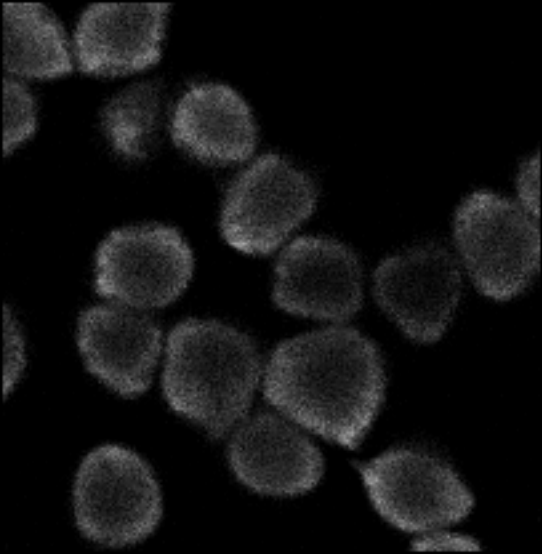


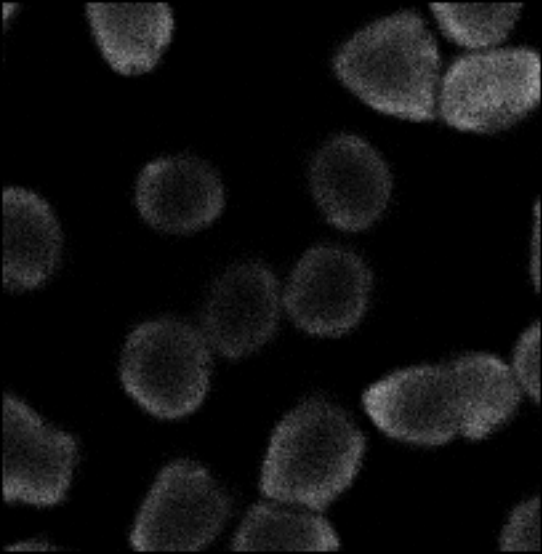


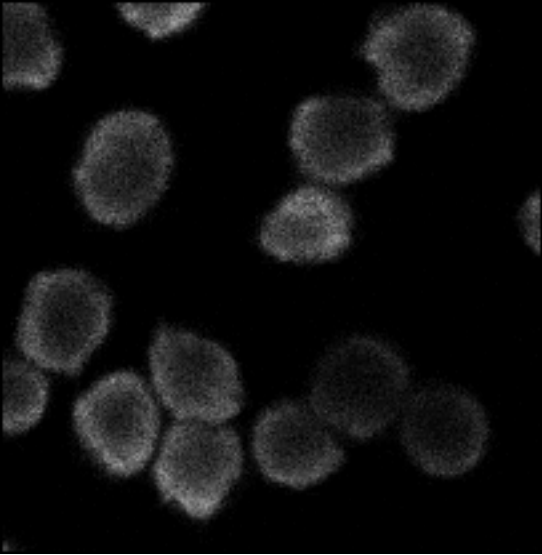


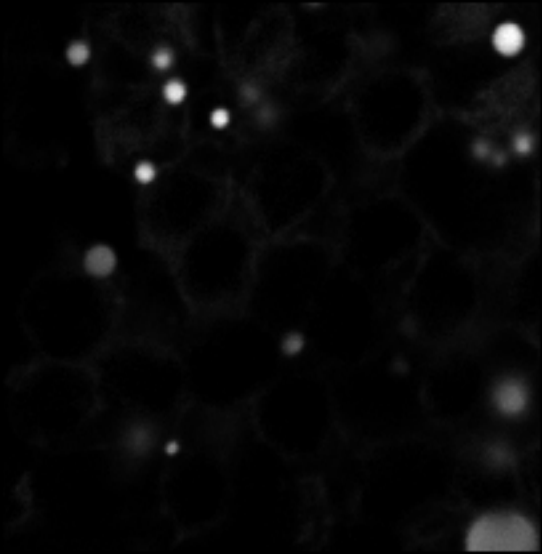


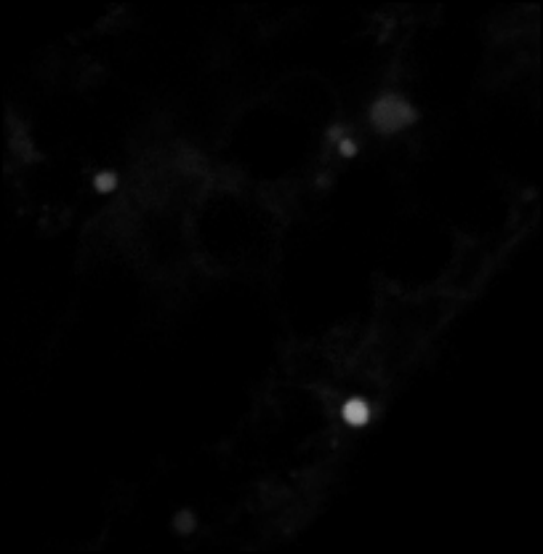




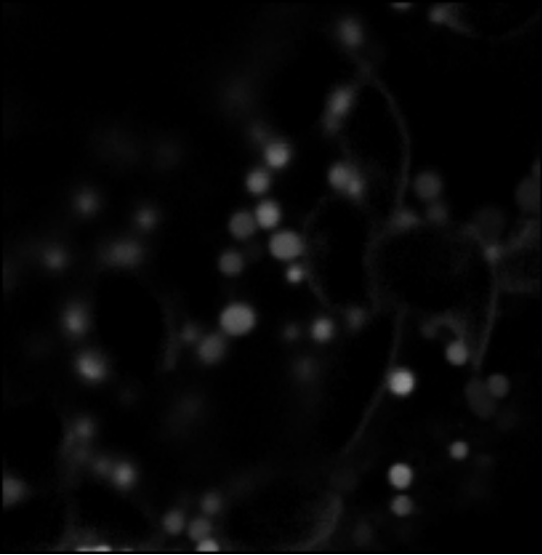




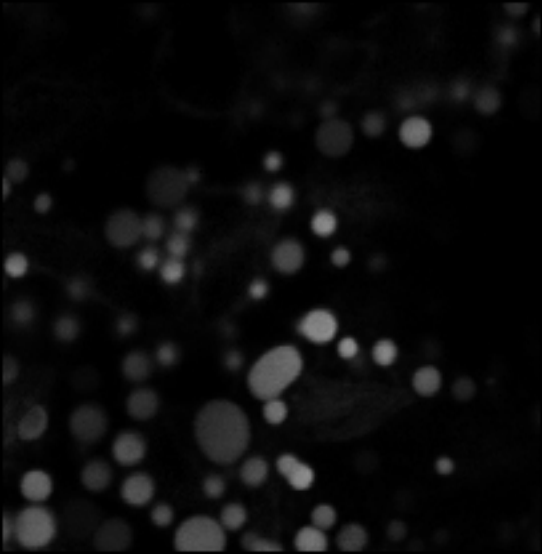


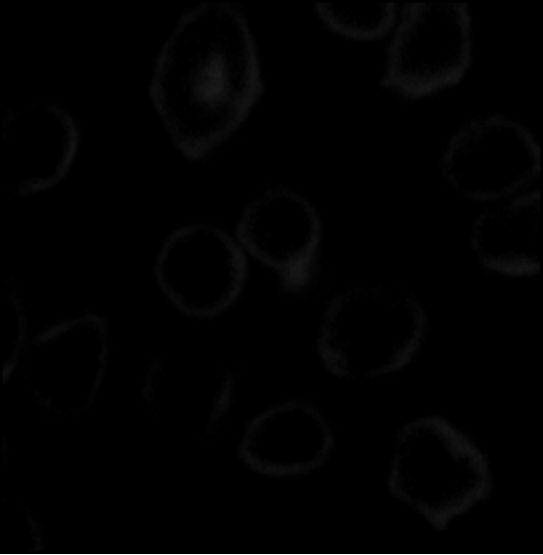










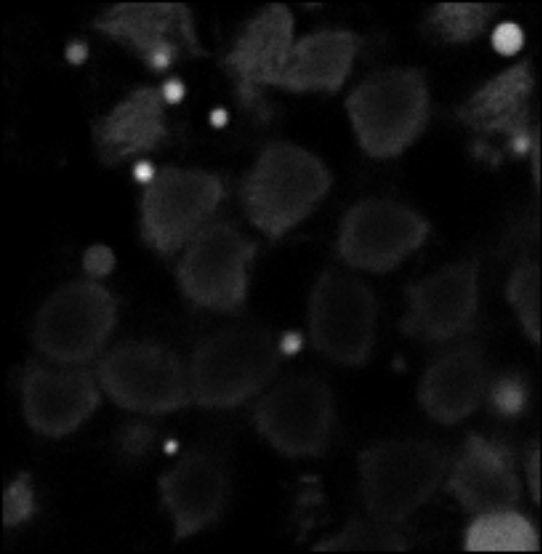


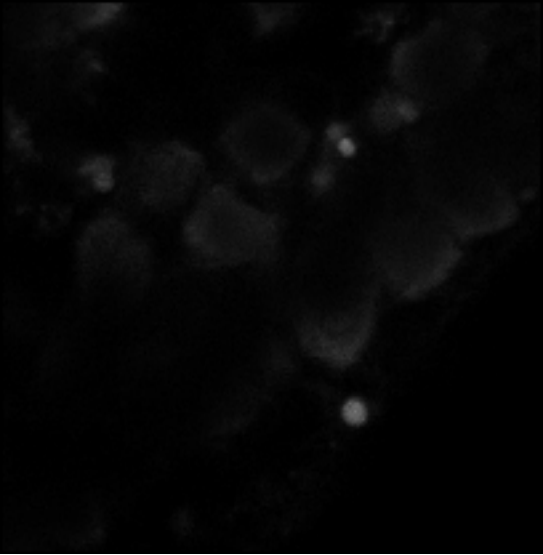


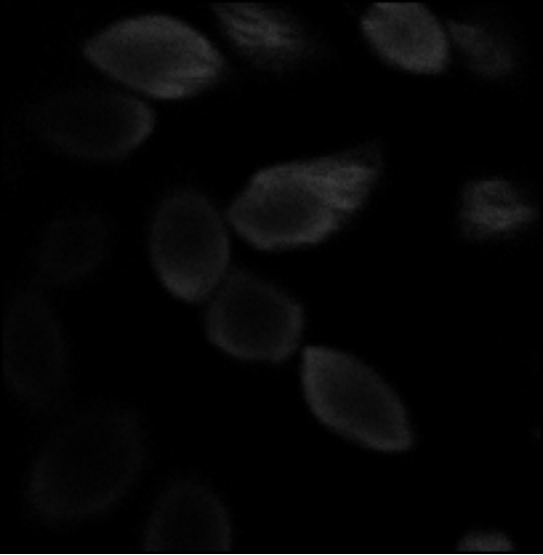


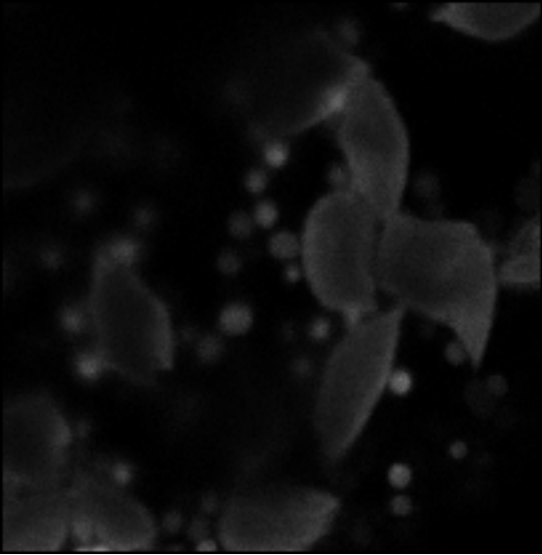
- 1995). The authors also found that the prevalence of *Trichostrongylus axei* was higher in cattle than in sheep, and that the prevalence of *Ostertagia circumcincta* was higher in sheep than in cattle. The authors also found that the prevalence of *Trichostrongylus axei* was higher in cattle than in sheep, and that the prevalence of *Ostertagia circumcincta* was higher in sheep than in cattle.
20. Roberts, J. A., & Nisbet, A. E. (1997). The prevalence of *Trichostrongylus axei* in cattle and sheep in Scotland. *Journal of the Helminthological Society of Australia*, 18, 1-4.
21. Roberts, J. A., & Nisbet, A. E. (1998). The prevalence of *Ostertagia circumcincta* in cattle and sheep in Scotland. *Journal of the Helminthological Society of Australia*, 19, 1-4.
22. Roberts, J. A., & Nisbet, A. E. (1999). The prevalence of *Trichostrongylus axei* in cattle and sheep in Scotland. *Journal of the Helminthological Society of Australia*, 20, 1-4.
23. Roberts, J. A., & Nisbet, A. E. (2000). The prevalence of *Ostertagia circumcincta* in cattle and sheep in Scotland. *Journal of the Helminthological Society of Australia*, 21, 1-4.
24. Roberts, J. A., & Nisbet, A. E. (2001). The prevalence of *Trichostrongylus axei* in cattle and sheep in Scotland. *Journal of the Helminthological Society of Australia*, 22, 1-4.
25. Roberts, J. A., & Nisbet, A. E. (2002). The prevalence of *Ostertagia circumcincta* in cattle and sheep in Scotland. *Journal of the Helminthological Society of Australia*, 23, 1-4.
26. Roberts, J. A., & Nisbet, A. E. (2003). The prevalence of *Trichostrongylus axei* in cattle and sheep in Scotland. *Journal of the Helminthological Society of Australia*, 24, 1-4.
27. Roberts, J. A., & Nisbet, A. E. (2004). The prevalence of *Ostertagia circumcincta* in cattle and sheep in Scotland. *Journal of the Helminthological Society of Australia*, 25, 1-4.
28. Roberts, J. A., & Nisbet, A. E. (2005). The prevalence of *Trichostrongylus axei* in cattle and sheep in Scotland. *Journal of the Helminthological Society of Australia*, 26, 1-4.
29. Roberts, J. A., & Nisbet, A. E. (2006). The prevalence of *Ostertagia circumcincta* in cattle and sheep in Scotland. *Journal of the Helminthological Society of Australia*, 27, 1-4.
30. Roberts, J. A., & Nisbet, A. E. (2007). The prevalence of *Trichostrongylus axei* in cattle and sheep in Scotland. *Journal of the Helminthological Society of Australia*, 28, 1-4.

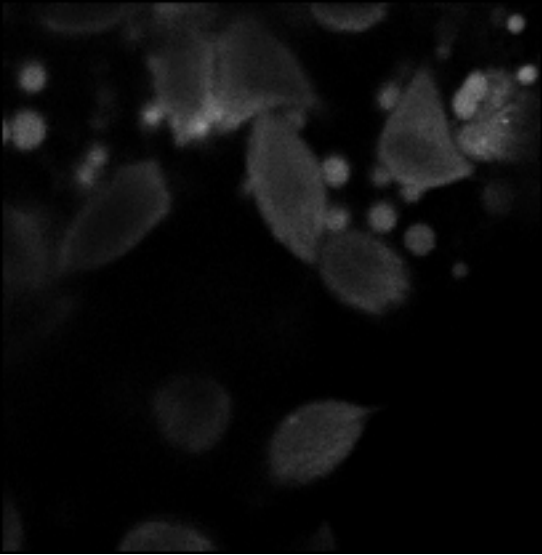
11. Roberts JA, Cookson BA, Smith RJ, et al. (1999) The epidemiology of *Legionnaires' disease* in the United Kingdom. *Journal of Clinical Microbiology* **37**, 1111-1116.
12. Smith RJ, Cookson BA, Roberts JA, et al. (2000) The epidemiology of *Legionnaires' disease* in the United Kingdom. *Journal of Clinical Microbiology* **38**, 1111-1116.
13. Smith RJ, Cookson BA, Roberts JA, et al. (2001) The epidemiology of *Legionnaires' disease* in the United Kingdom. *Journal of Clinical Microbiology* **39**, 1111-1116.
14. Smith RJ, Cookson BA, Roberts JA, et al. (2002) The epidemiology of *Legionnaires' disease* in the United Kingdom. *Journal of Clinical Microbiology* **40**, 1111-1116.
15. Smith RJ, Cookson BA, Roberts JA, et al. (2003) The epidemiology of *Legionnaires' disease* in the United Kingdom. *Journal of Clinical Microbiology* **41**, 1111-1116.
16. Smith RJ, Cookson BA, Roberts JA, et al. (2004) The epidemiology of *Legionnaires' disease* in the United Kingdom. *Journal of Clinical Microbiology* **42**, 1111-1116.
17. Smith RJ, Cookson BA, Roberts JA, et al. (2005) The epidemiology of *Legionnaires' disease* in the United Kingdom. *Journal of Clinical Microbiology* **43**, 1111-1116.
18. Smith RJ, Cookson BA, Roberts JA, et al. (2006) The epidemiology of *Legionnaires' disease* in the United Kingdom. *Journal of Clinical Microbiology* **44**, 1111-1116.
19. Smith RJ, Cookson BA, Roberts JA, et al. (2007) The epidemiology of *Legionnaires' disease* in the United Kingdom. *Journal of Clinical Microbiology* **45**, 1111-1116.
20. Smith RJ, Cookson BA, Roberts JA, et al. (2008) The epidemiology of *Legionnaires' disease* in the United Kingdom. *Journal of Clinical Microbiology* **46**, 1111-1116.



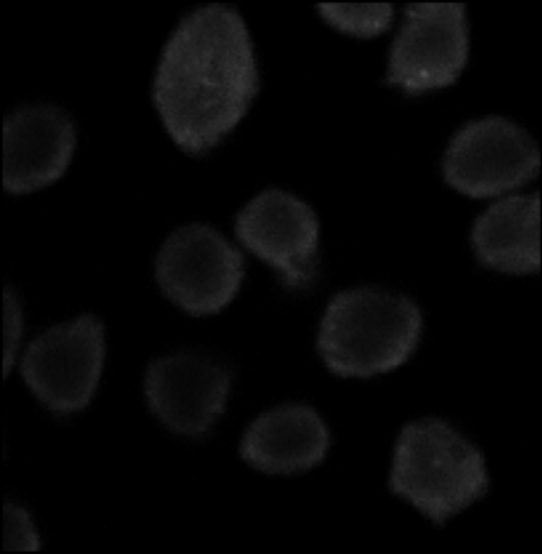


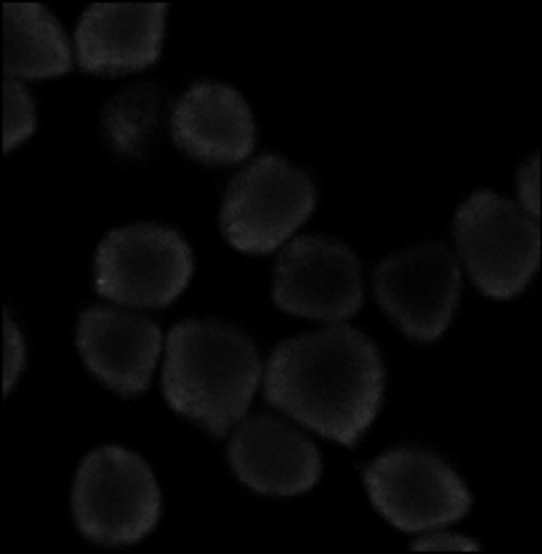


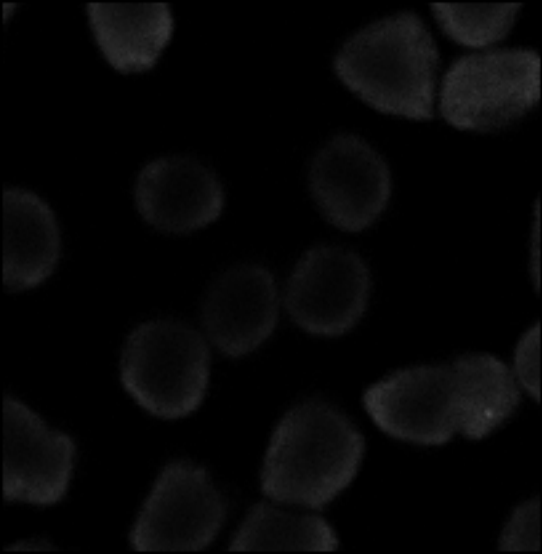


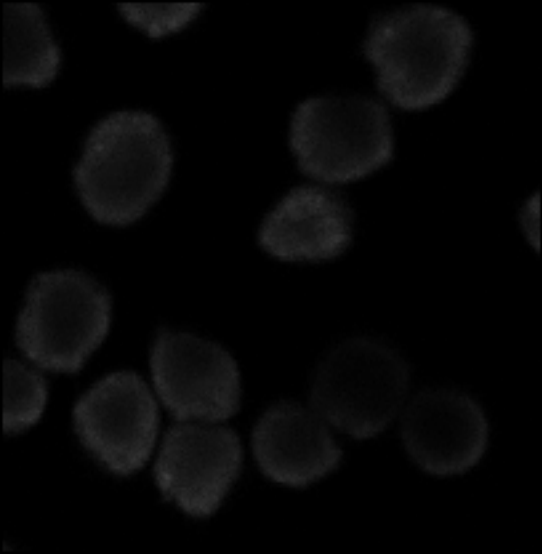


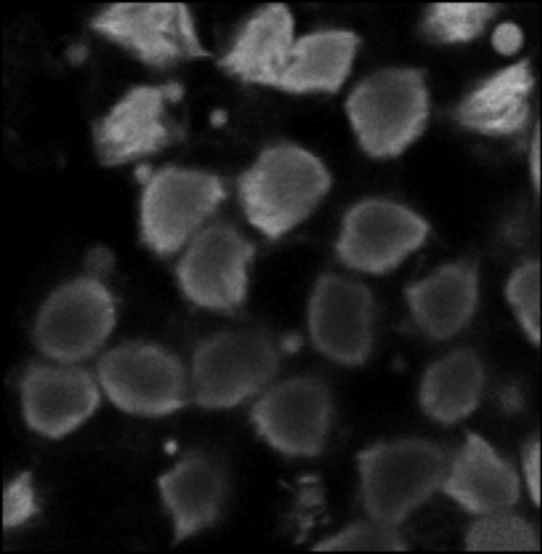


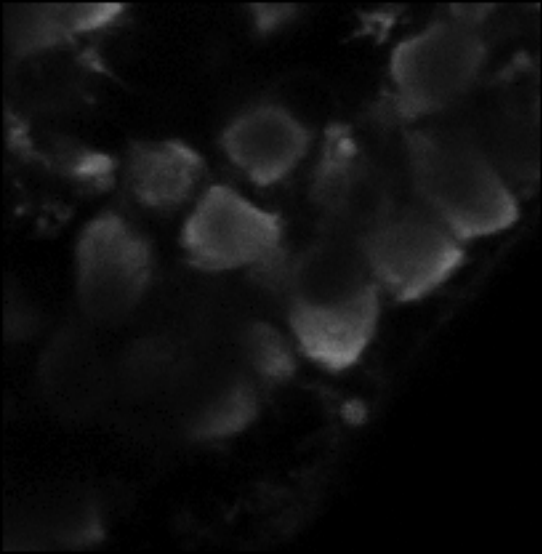


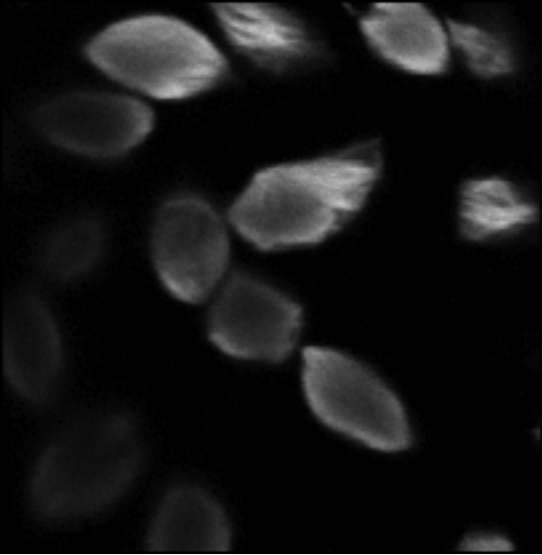


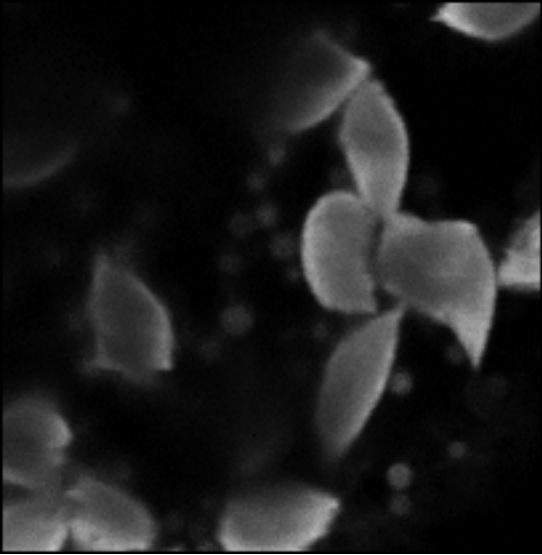


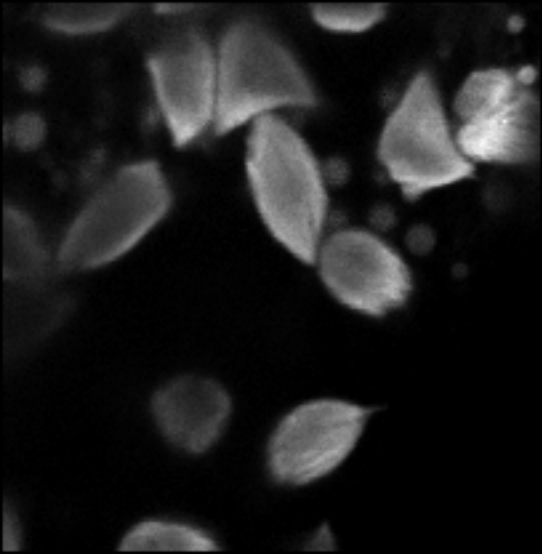




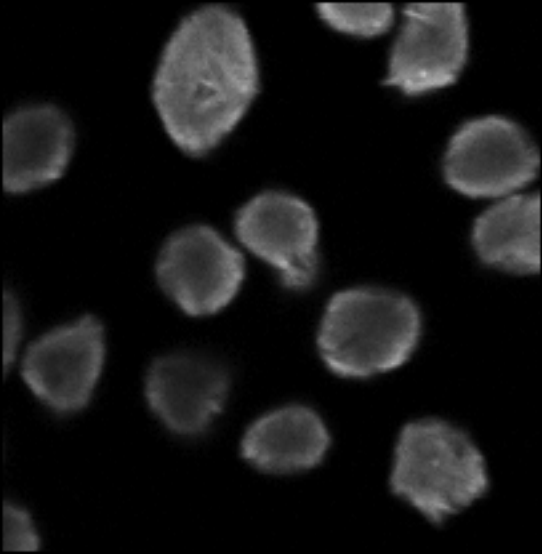


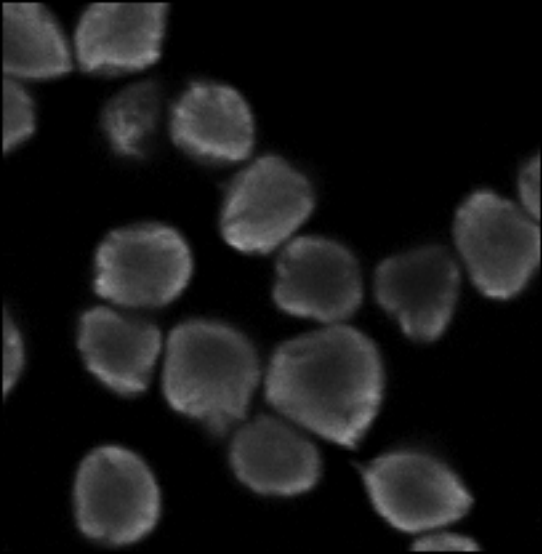


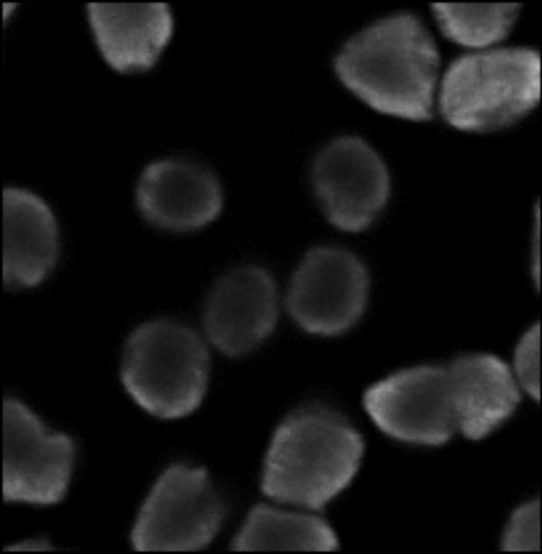


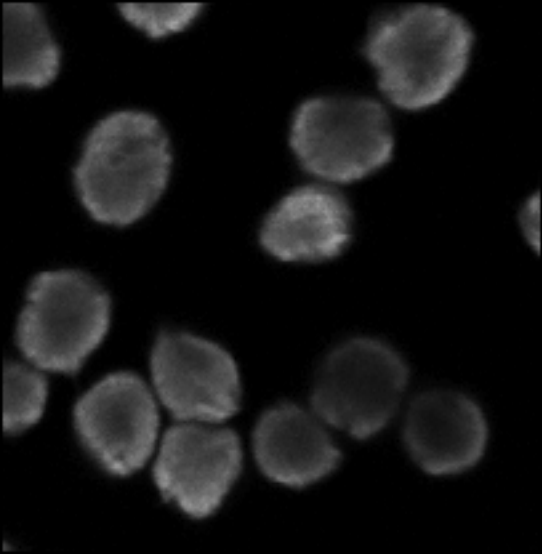


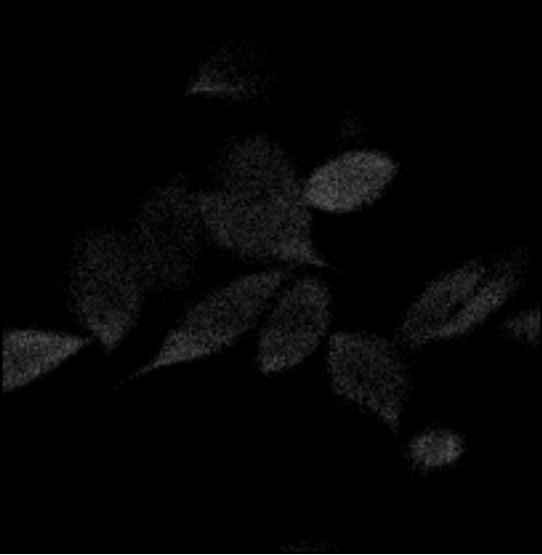


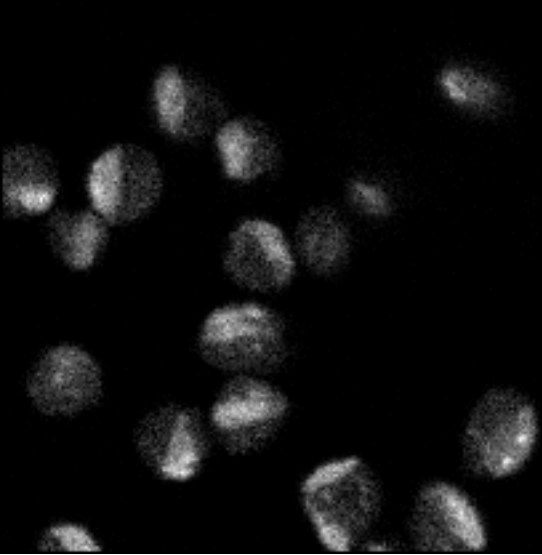


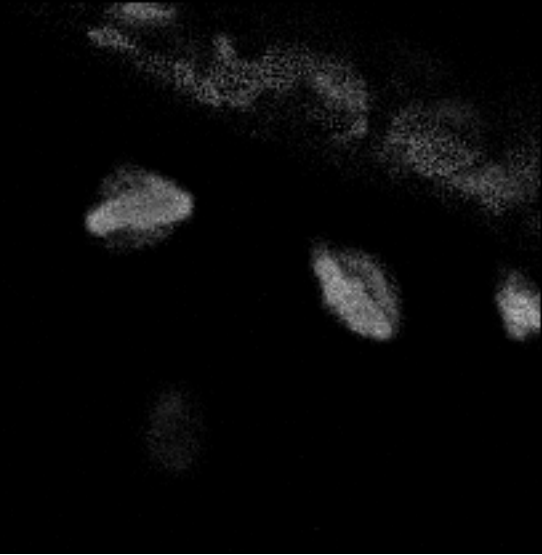




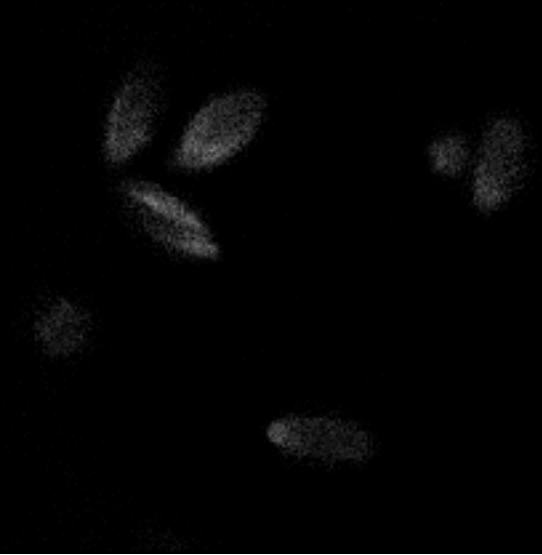


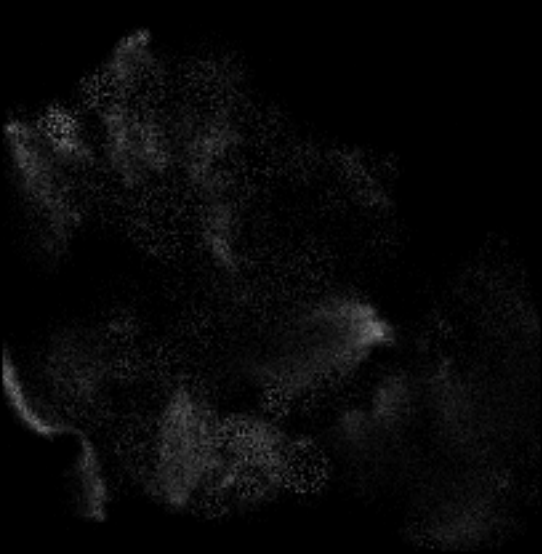




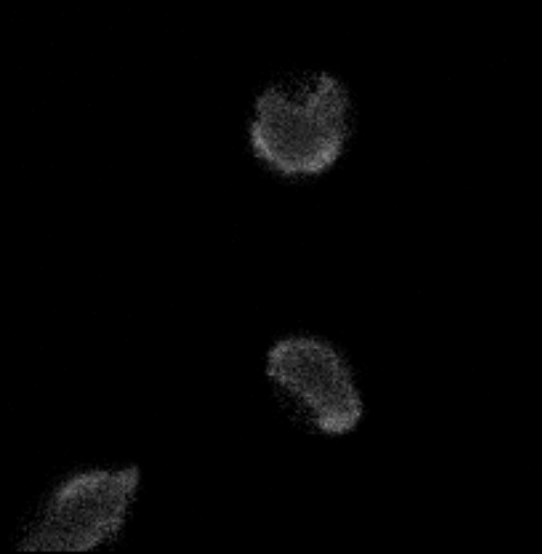




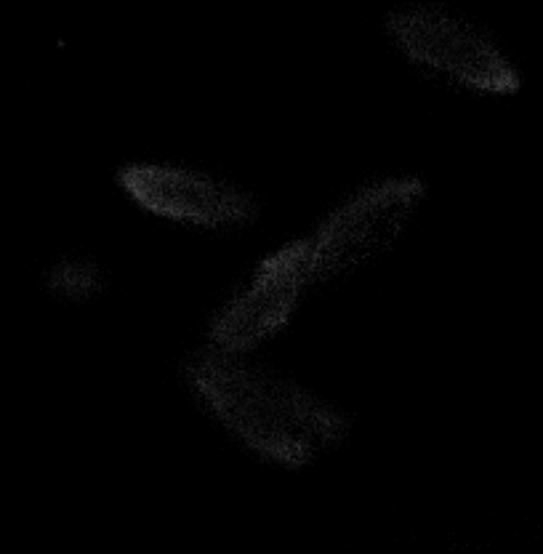


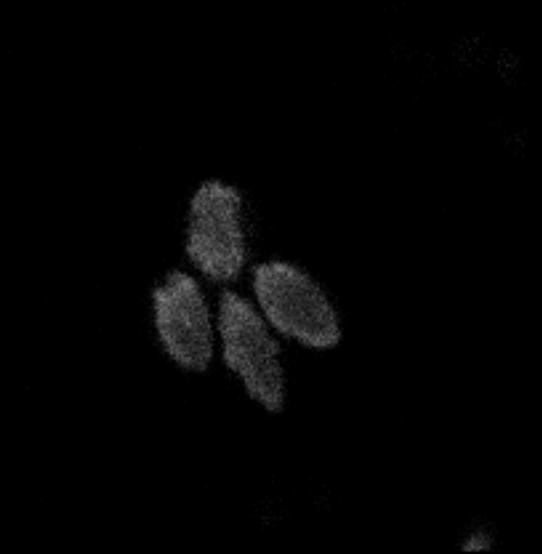


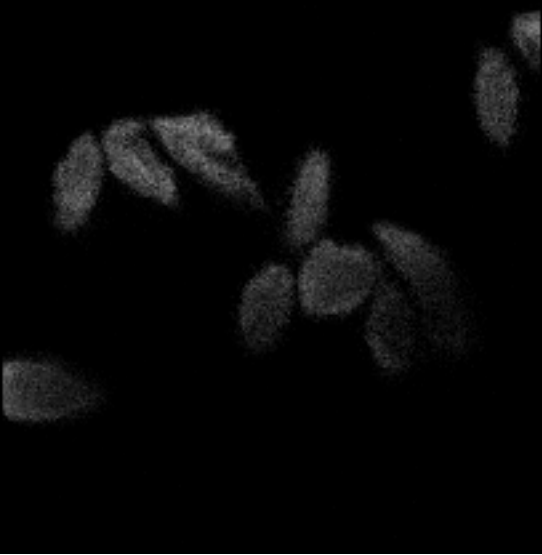


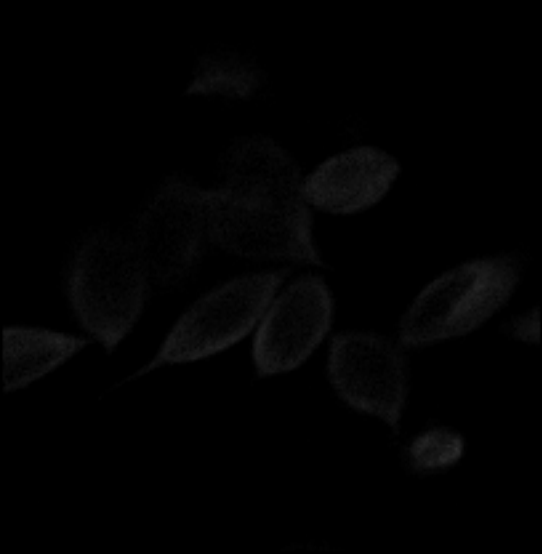


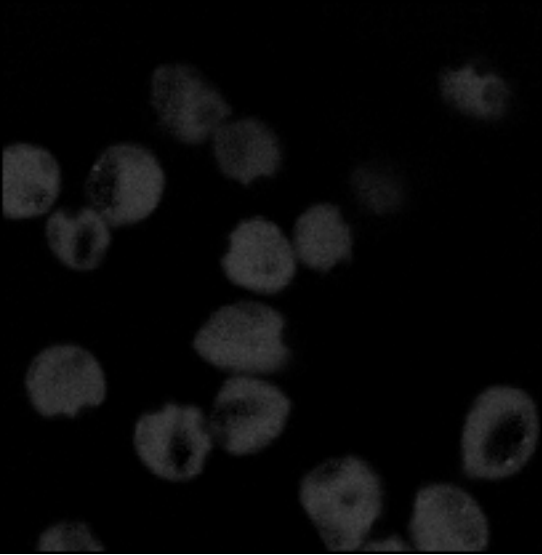




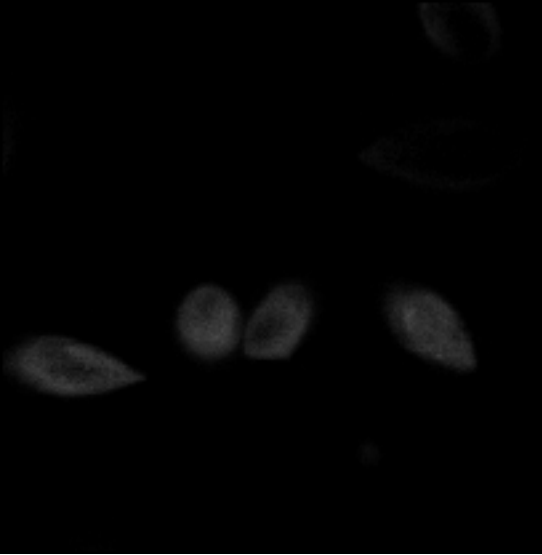


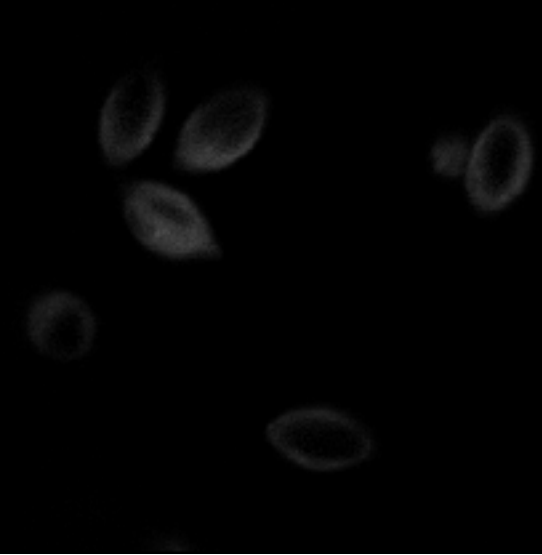


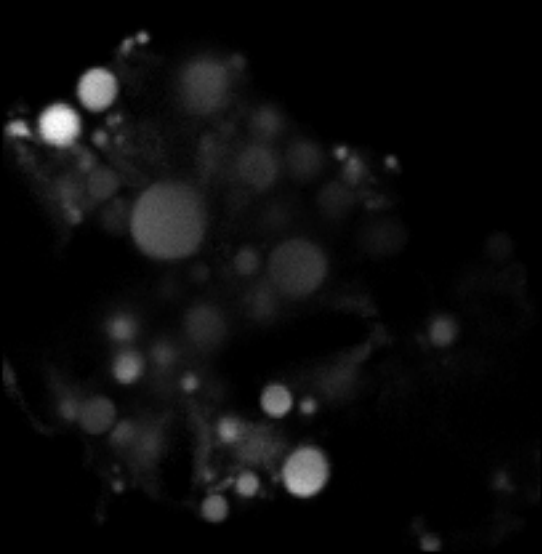




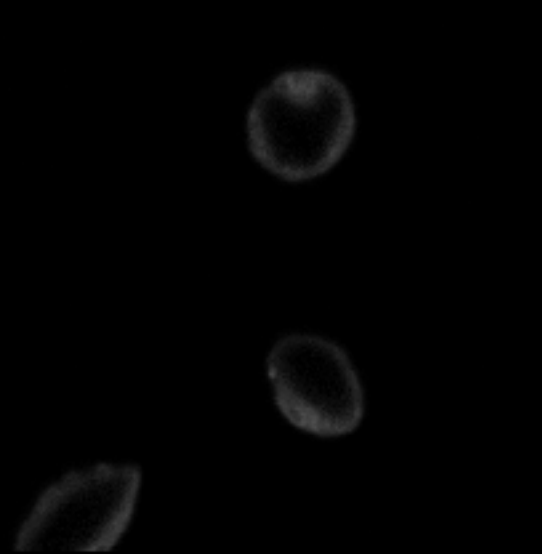


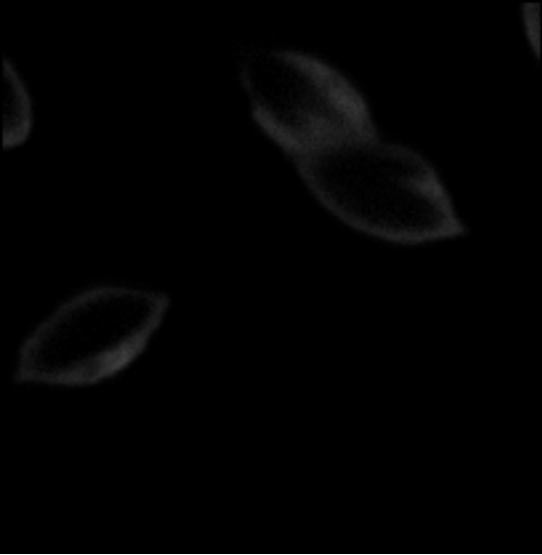


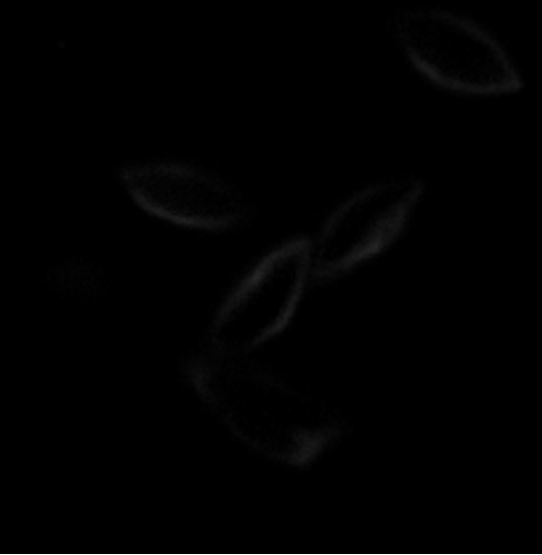


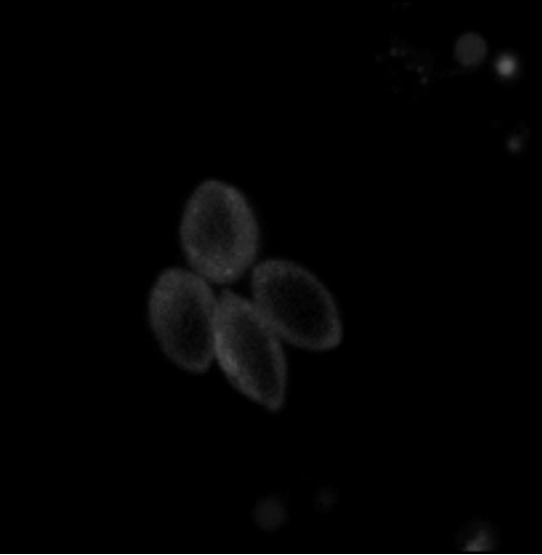


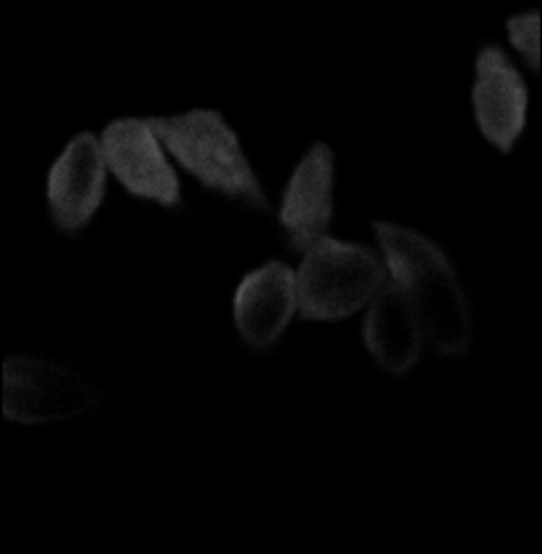


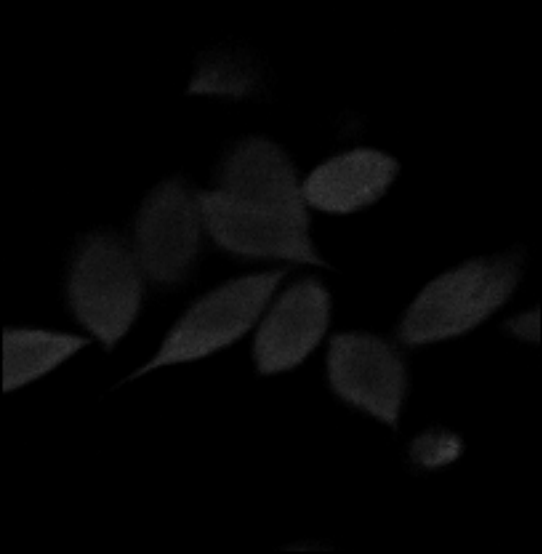


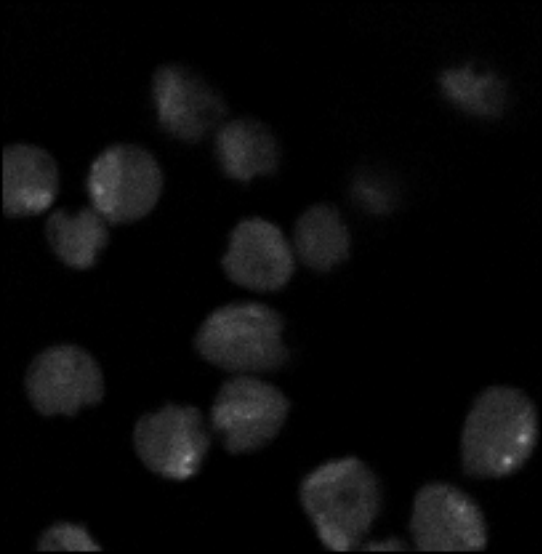


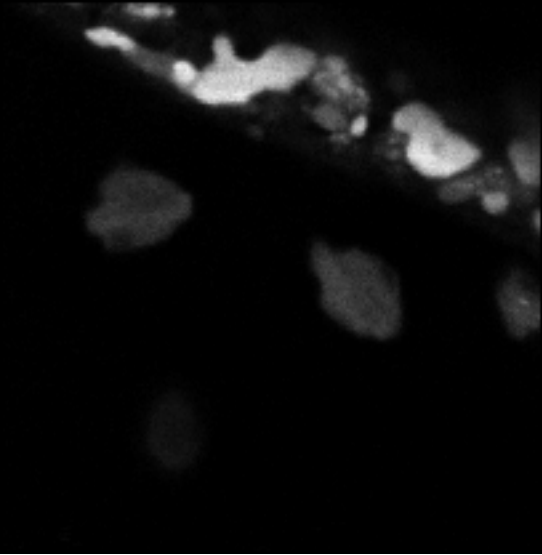




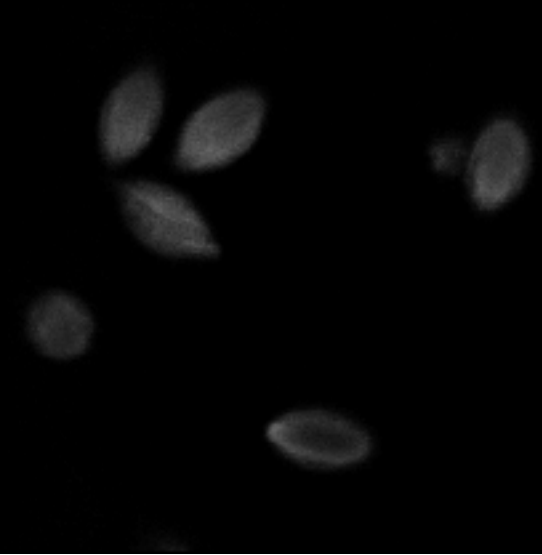


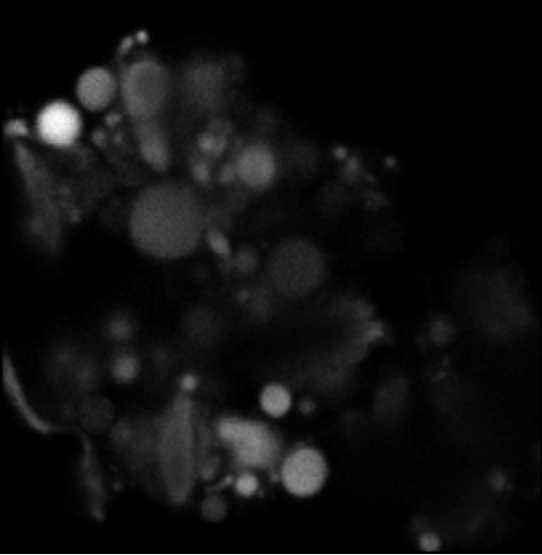




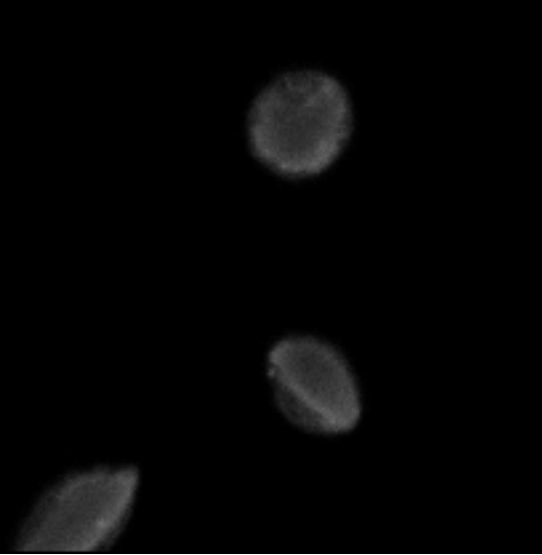


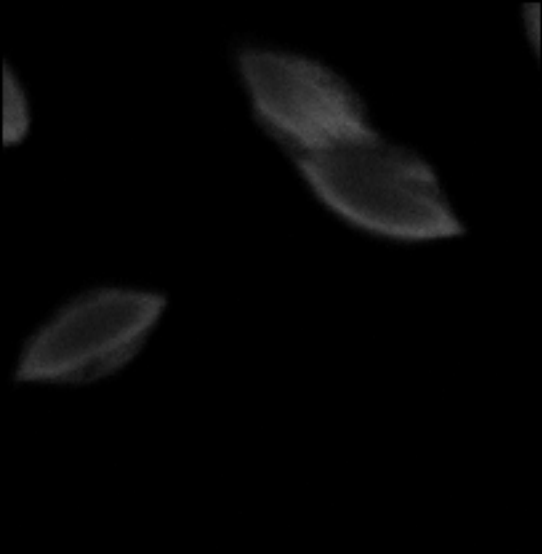


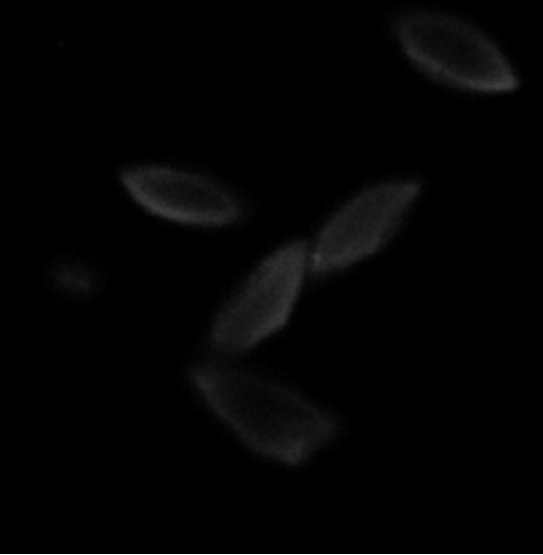


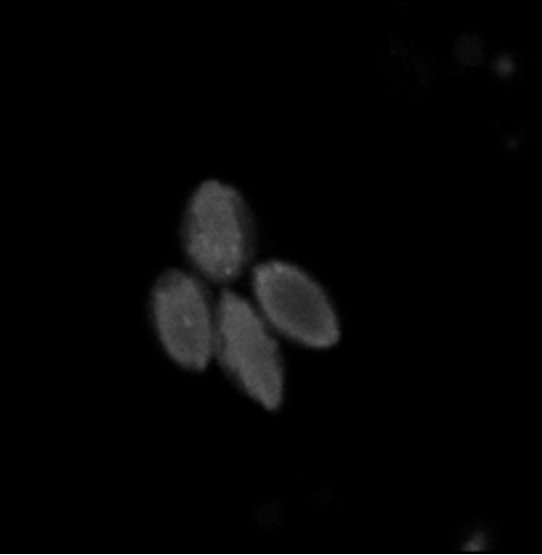


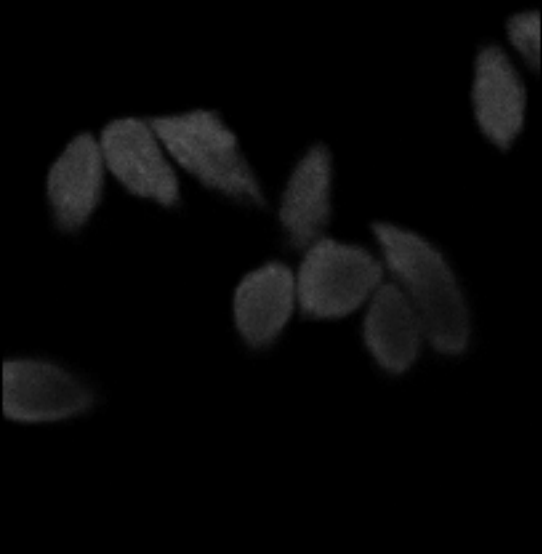




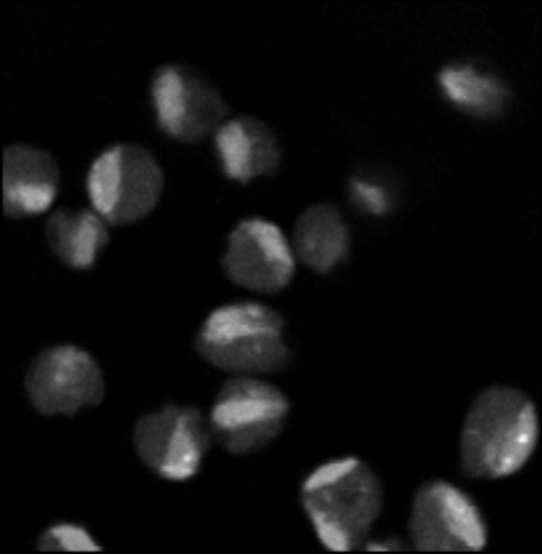


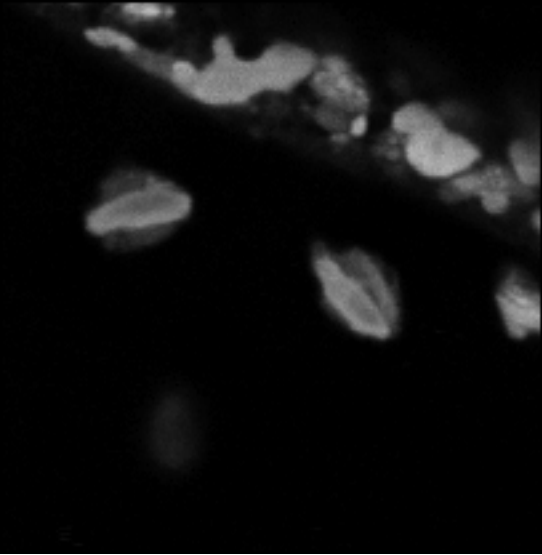


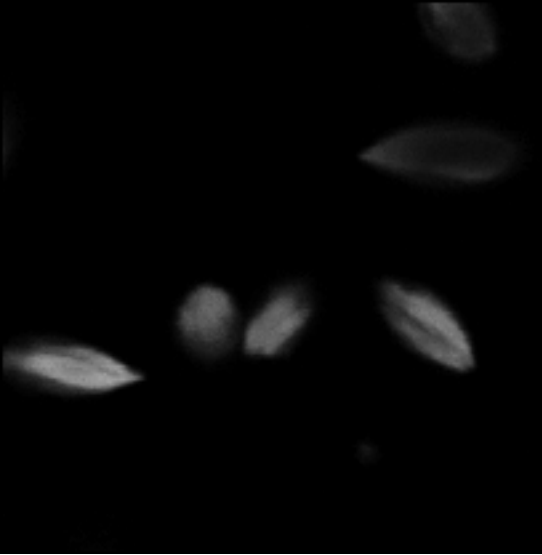


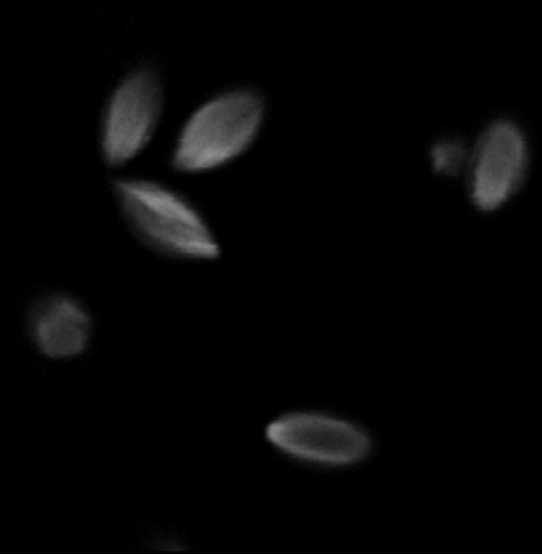


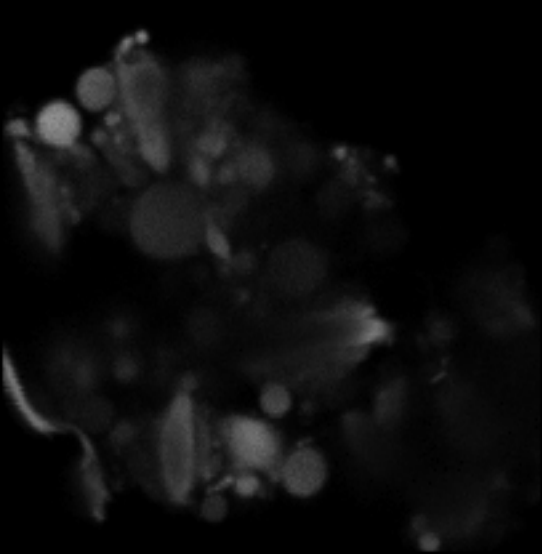




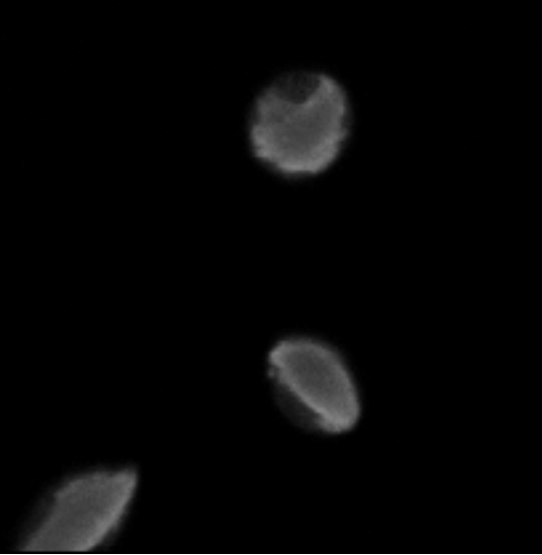


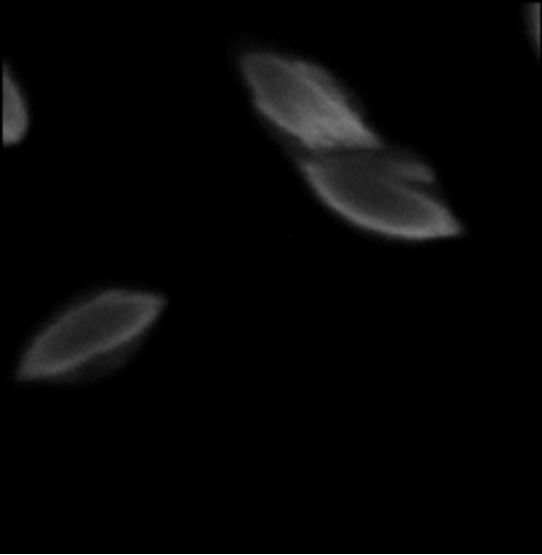


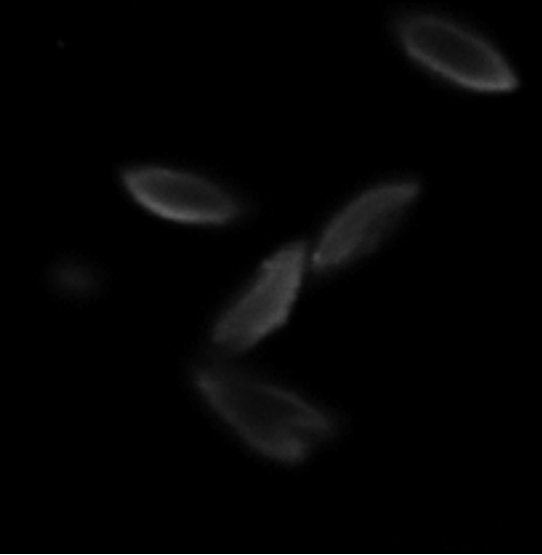




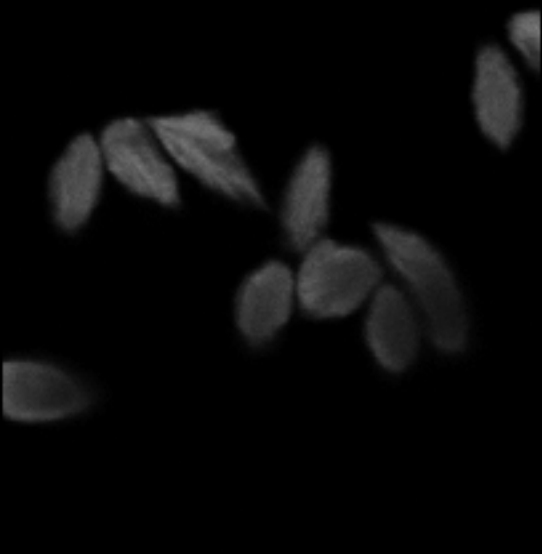




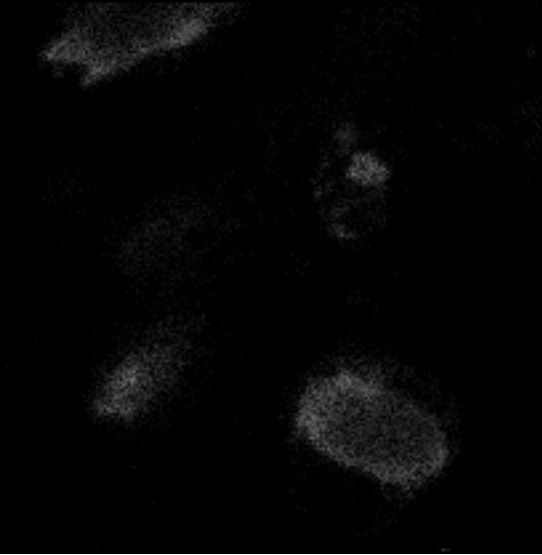


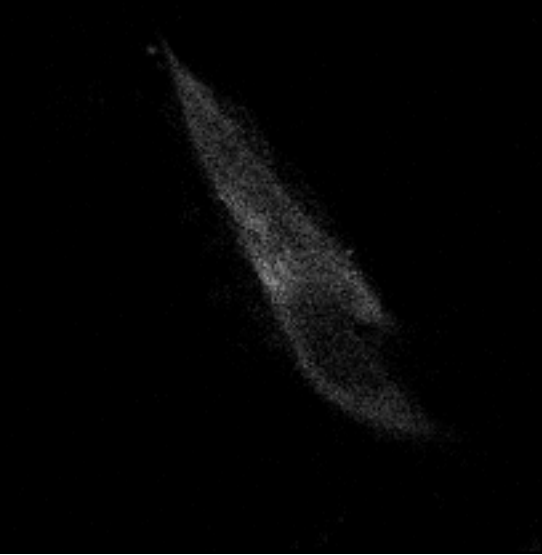




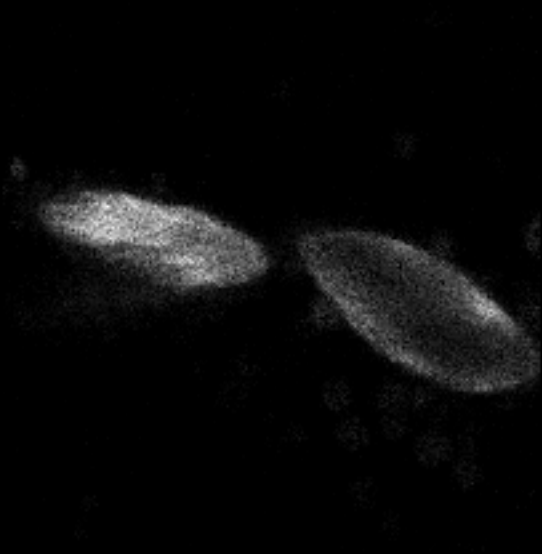










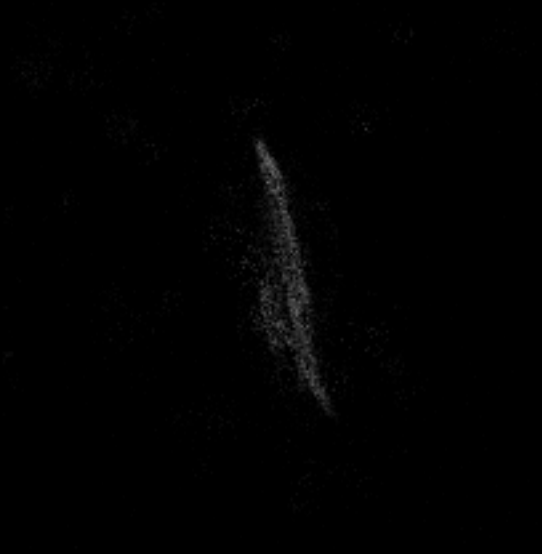




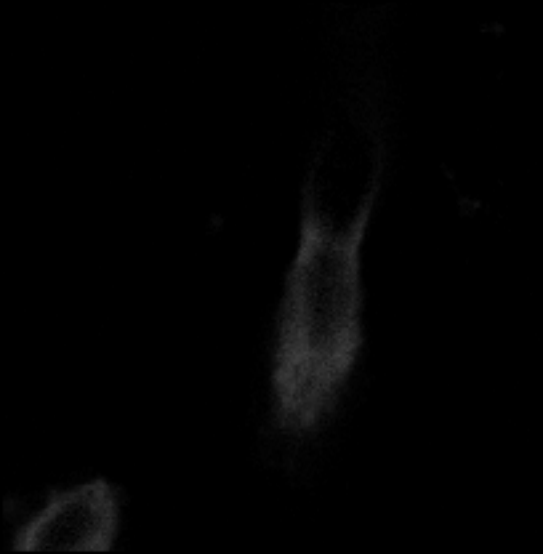


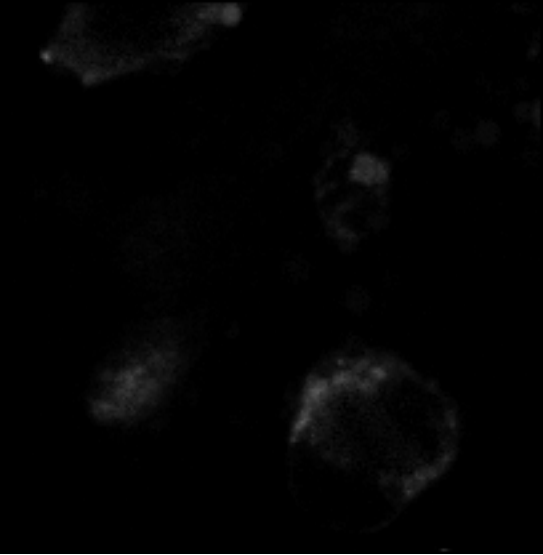


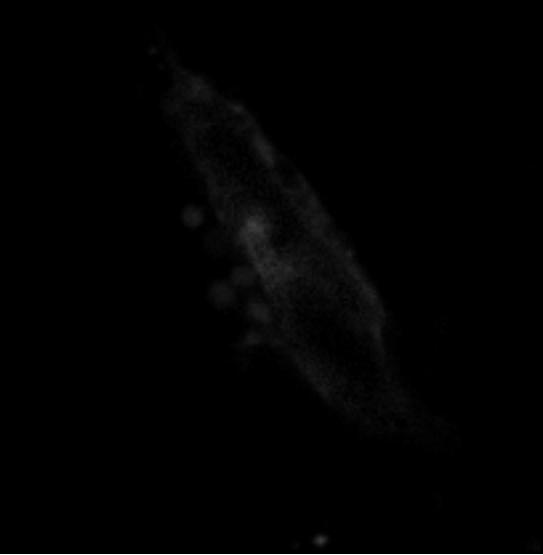


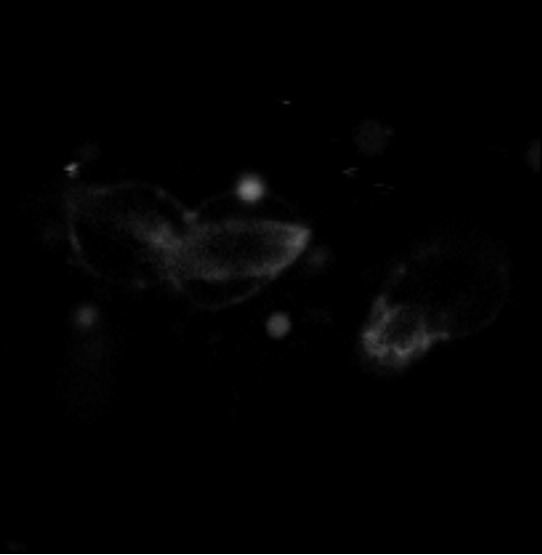


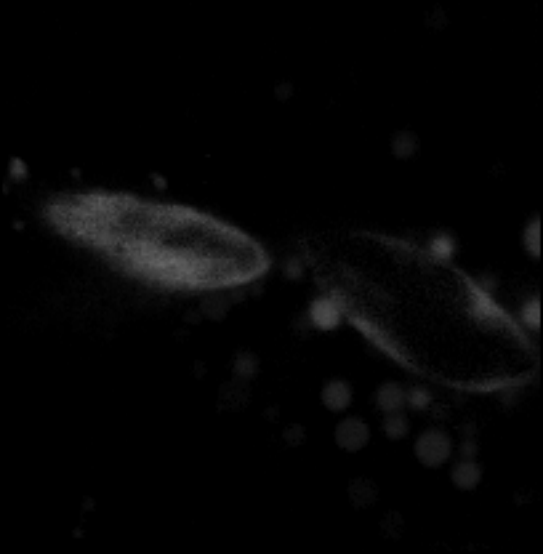


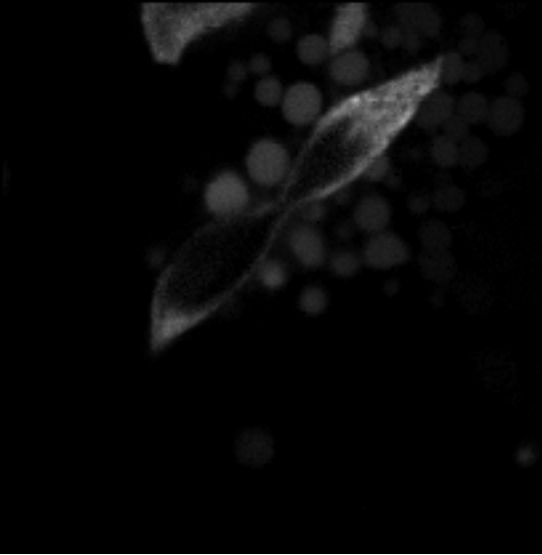


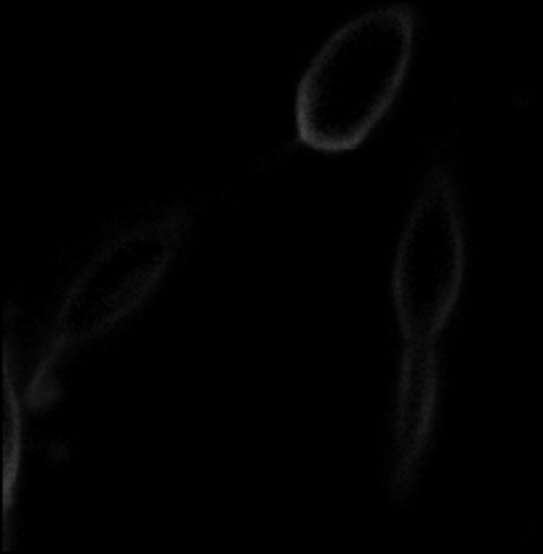


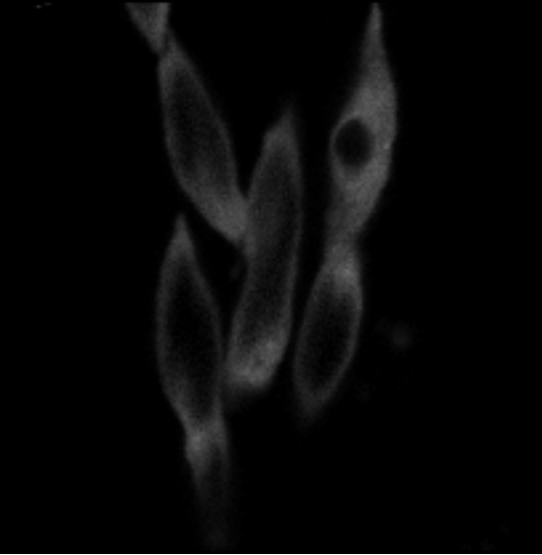




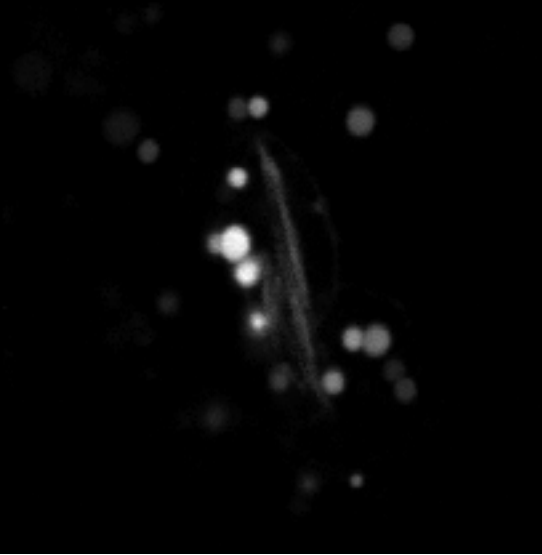






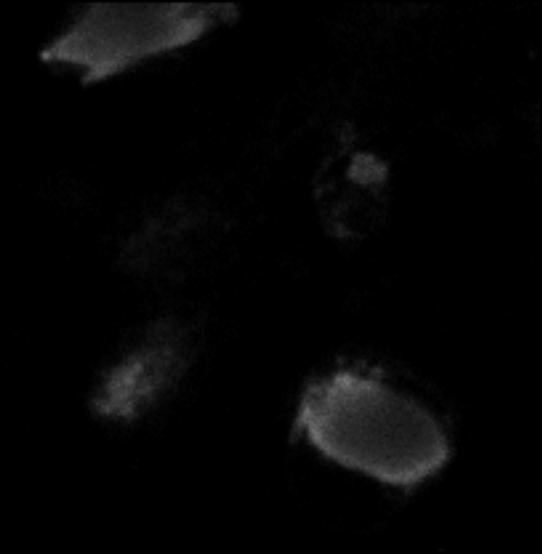


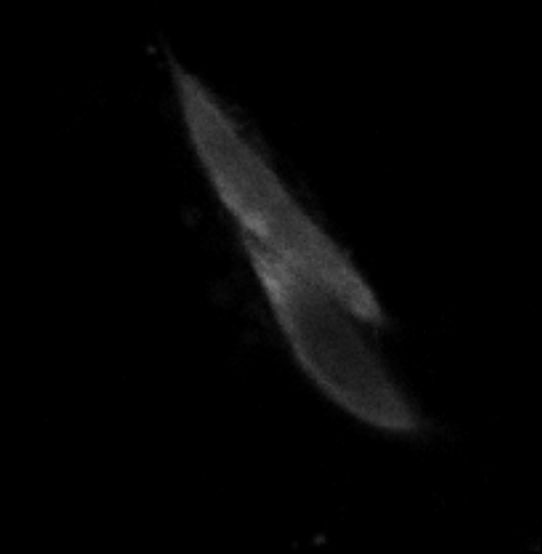


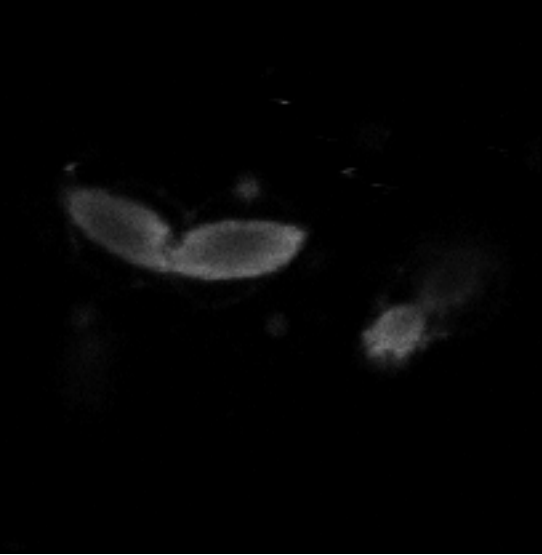


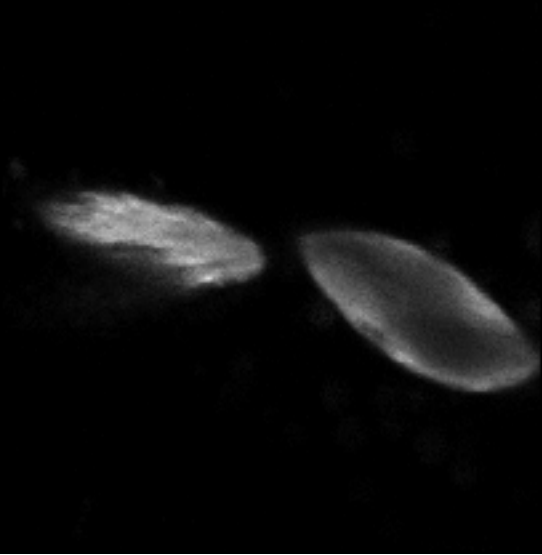




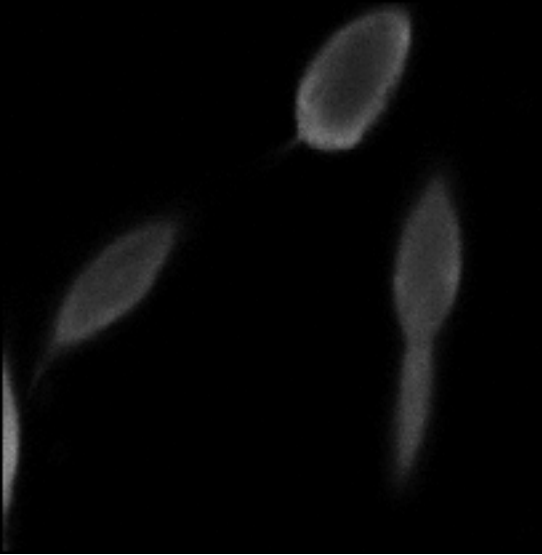












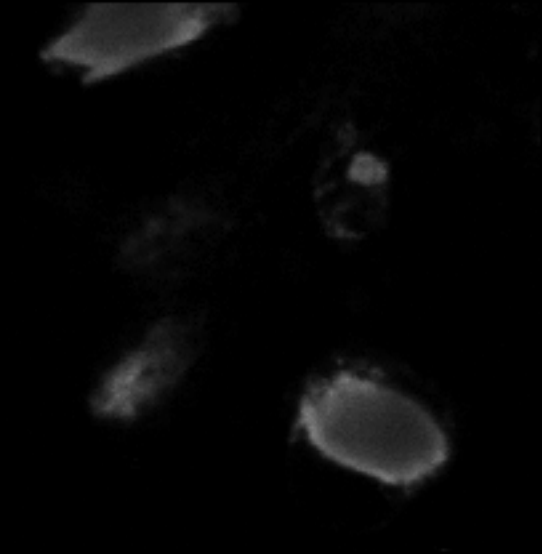


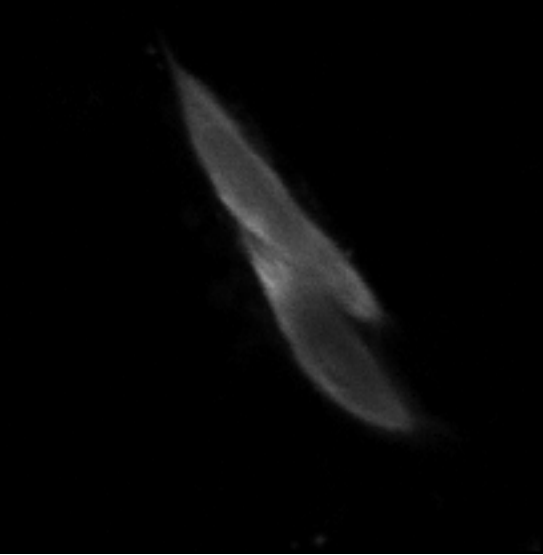


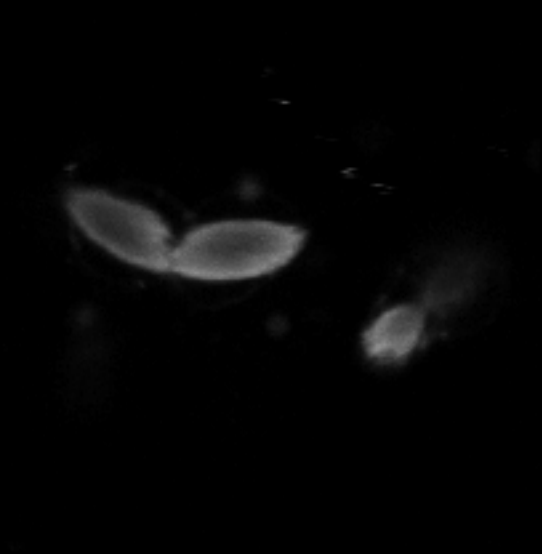


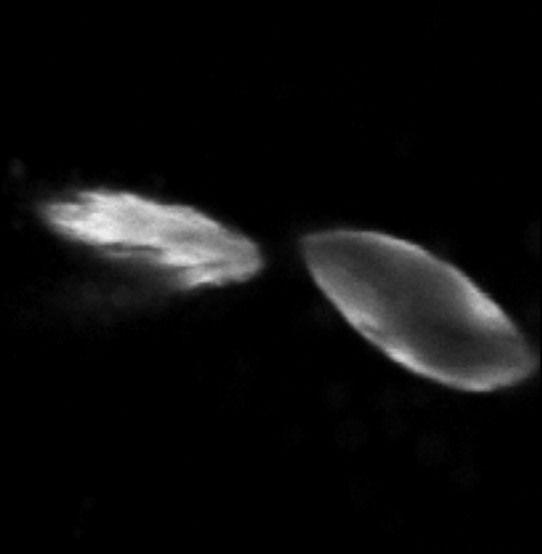


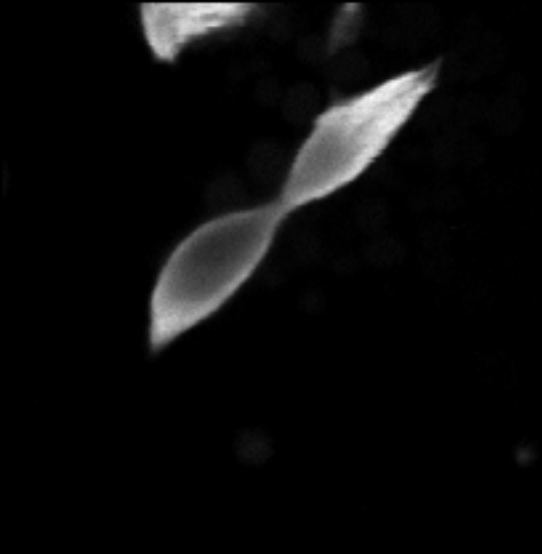


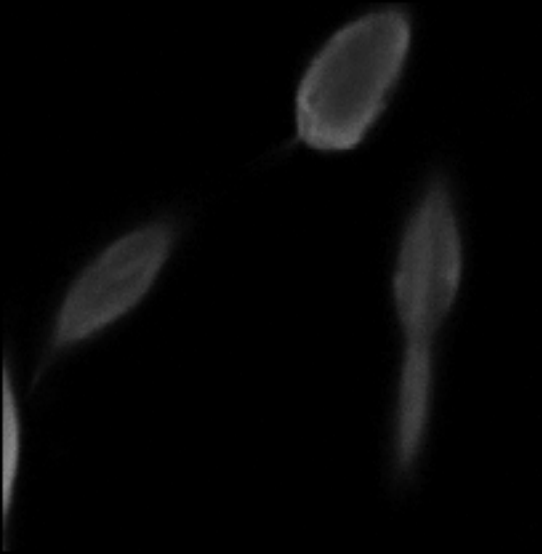










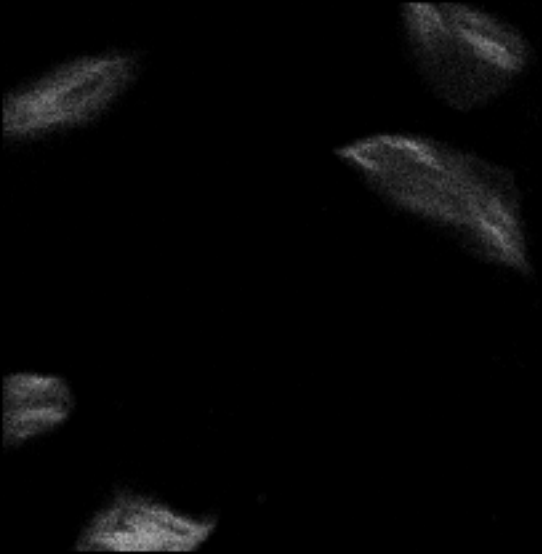




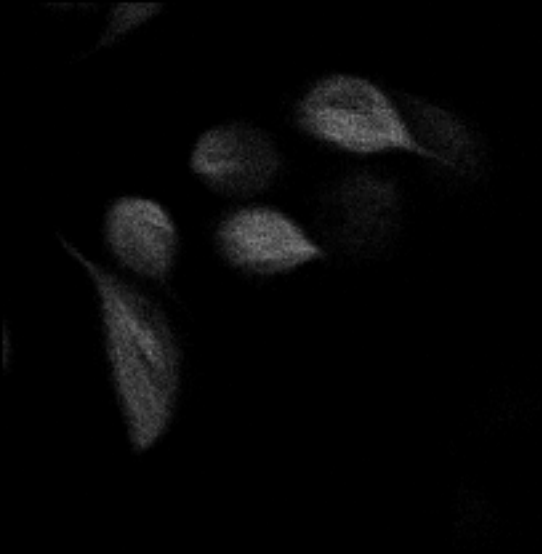


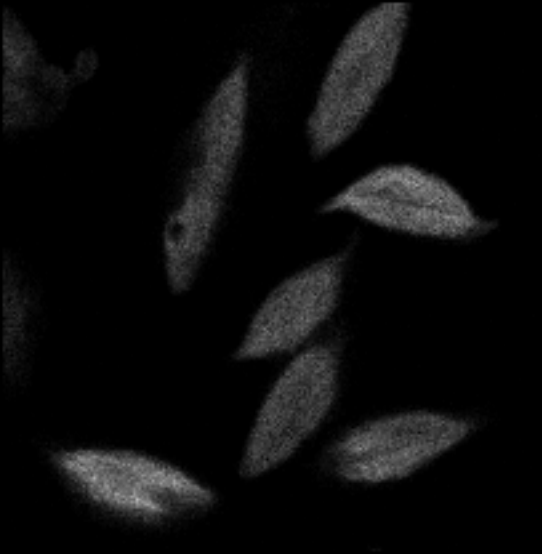


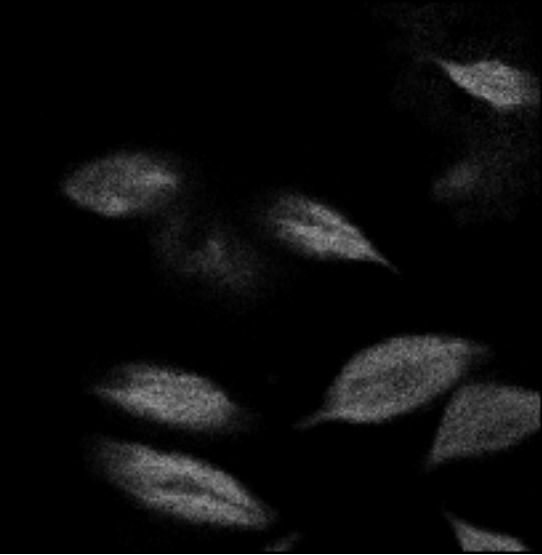


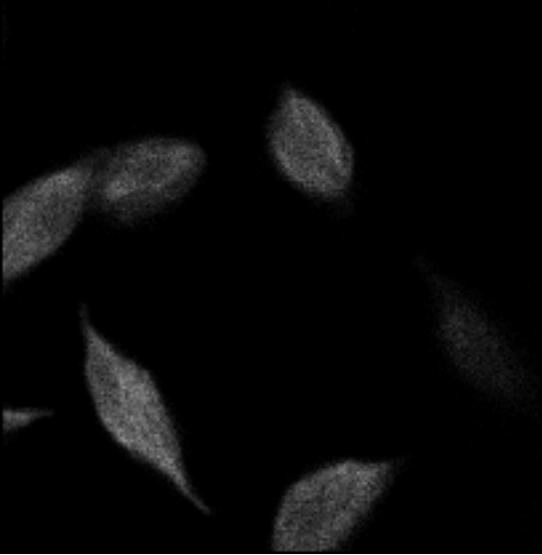


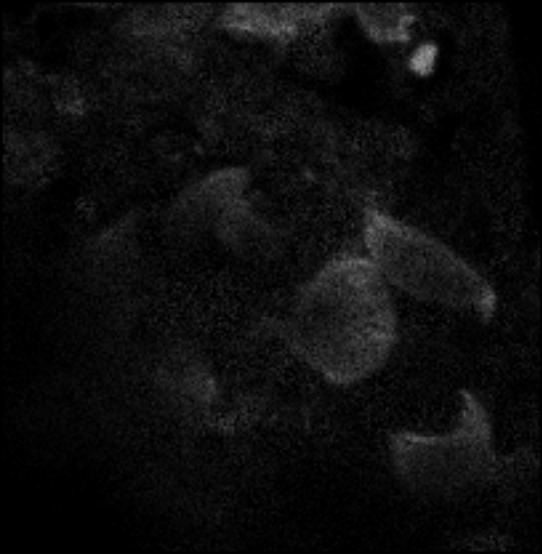




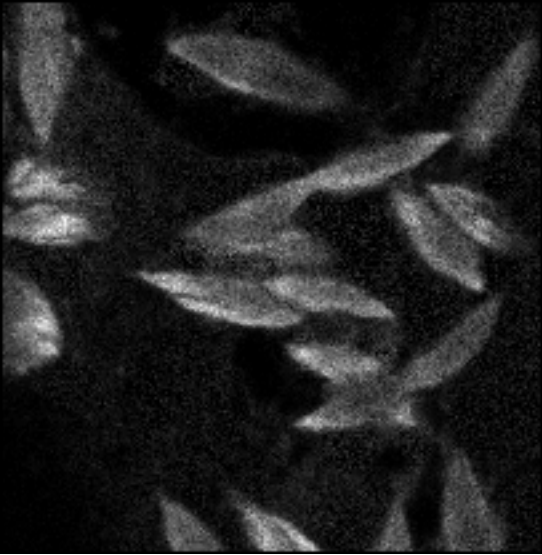


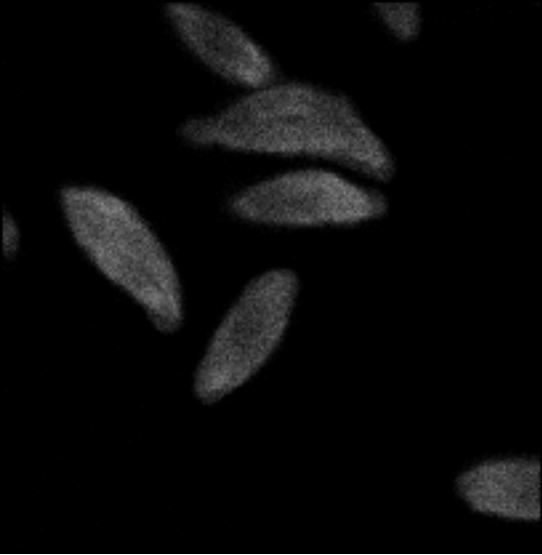








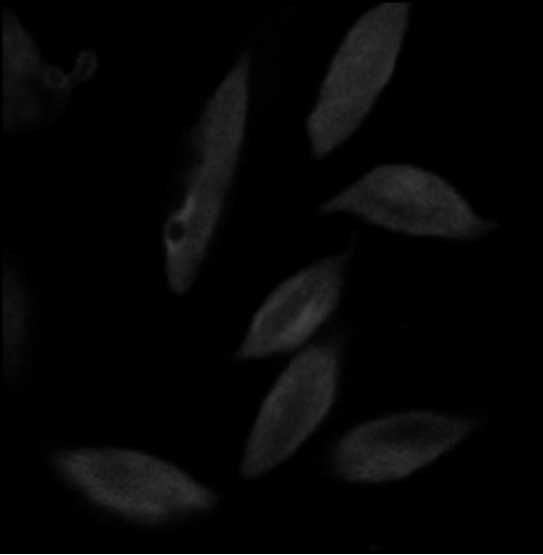




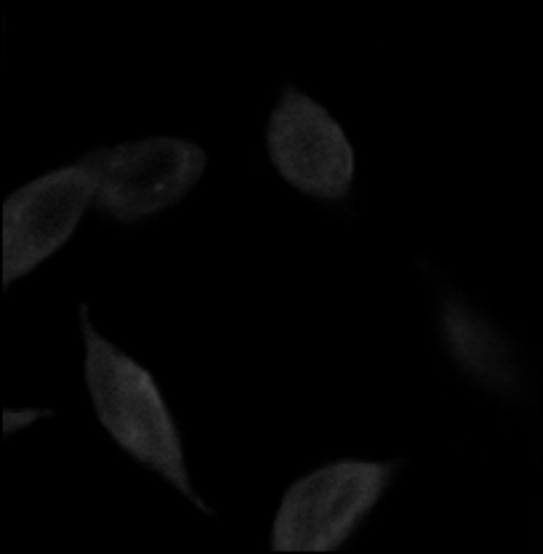


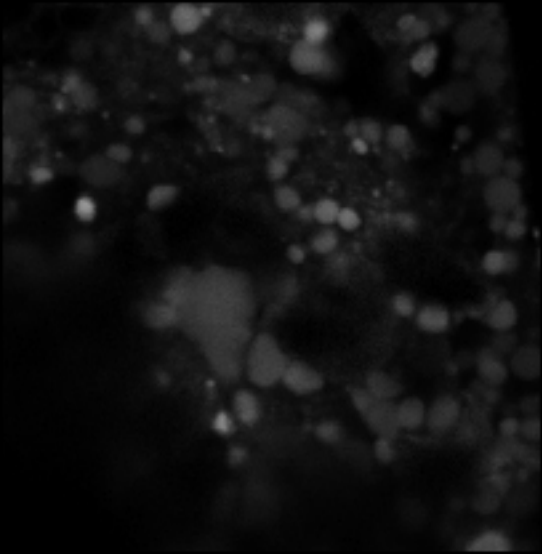




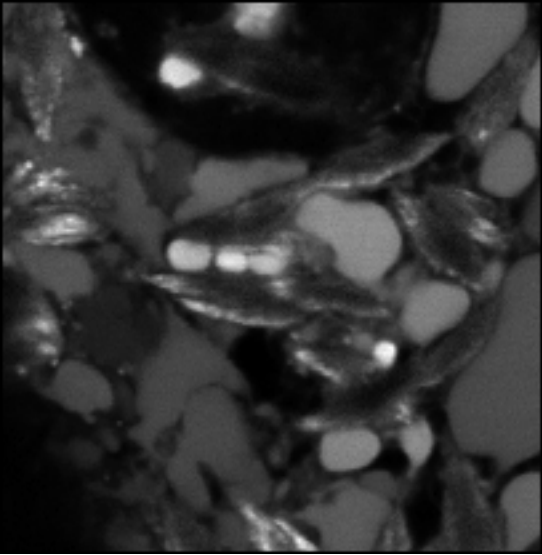




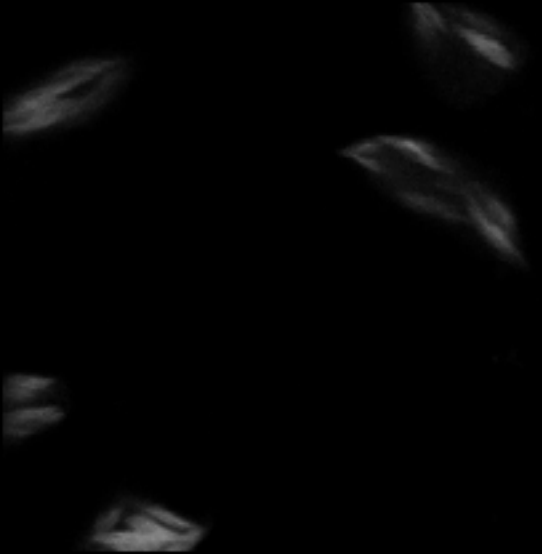






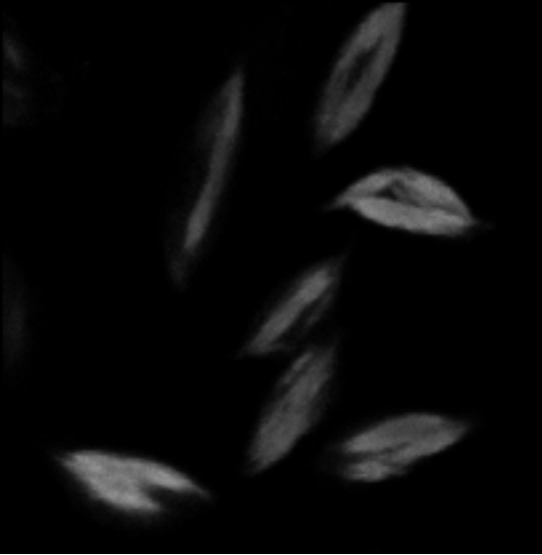




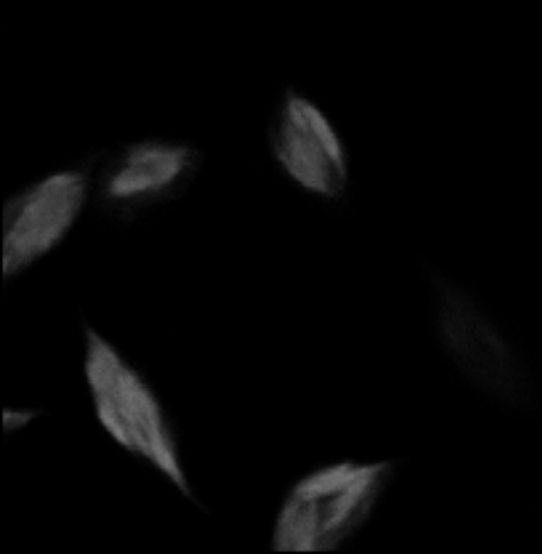




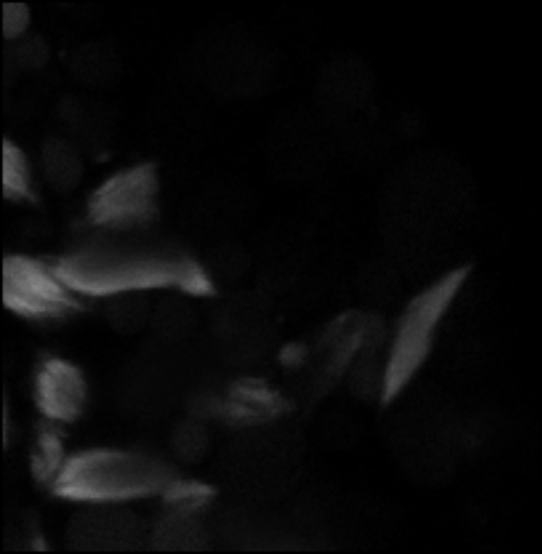


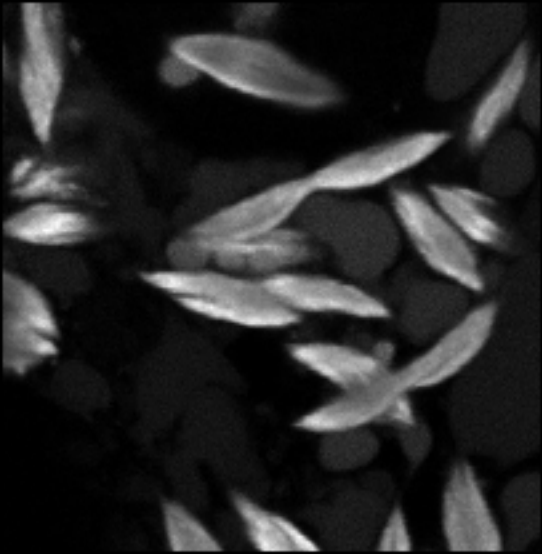




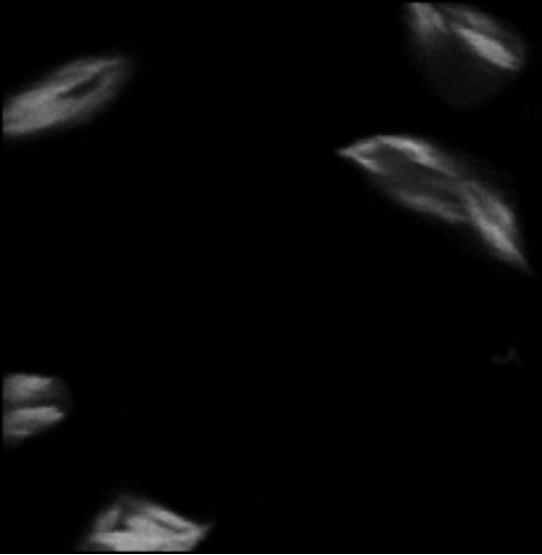




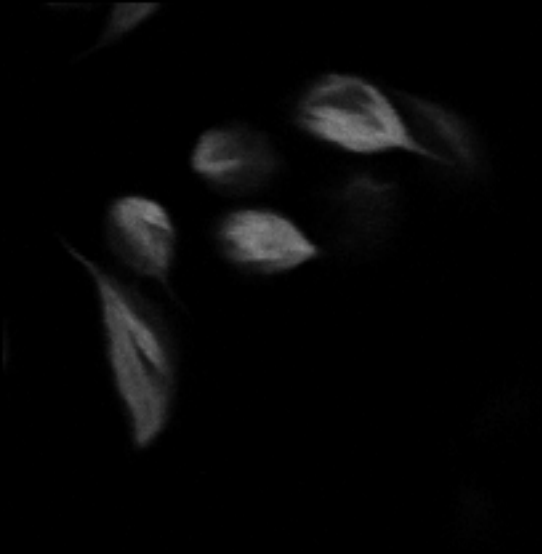


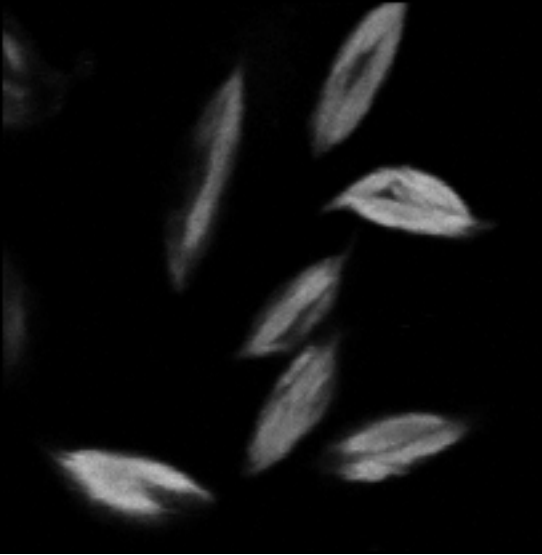


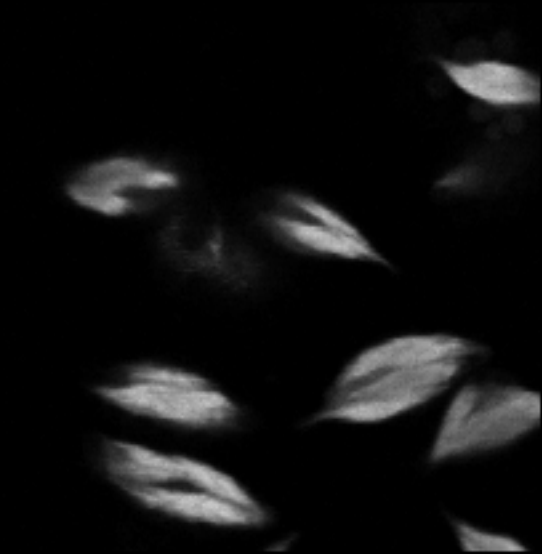


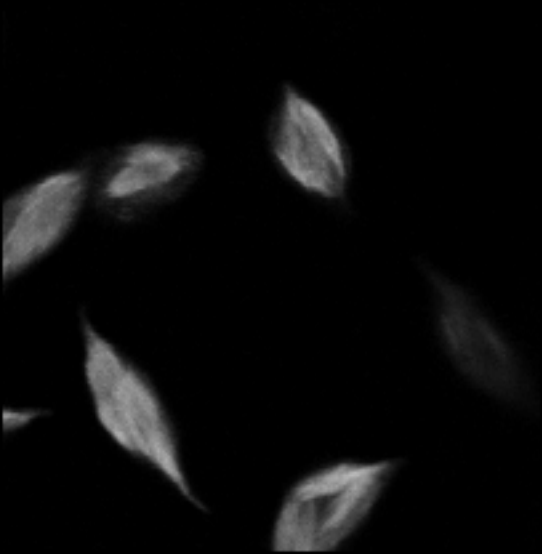




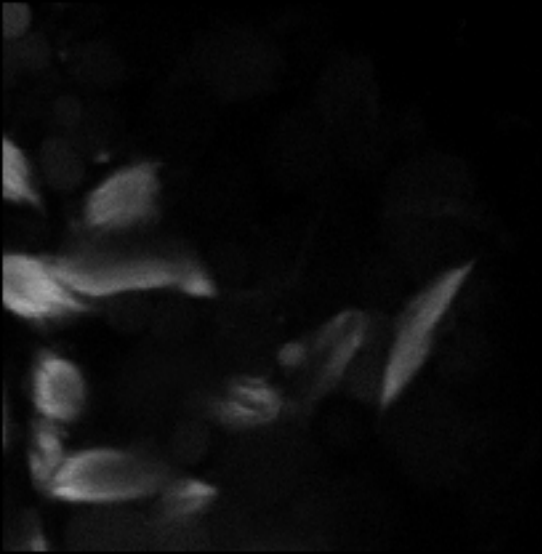


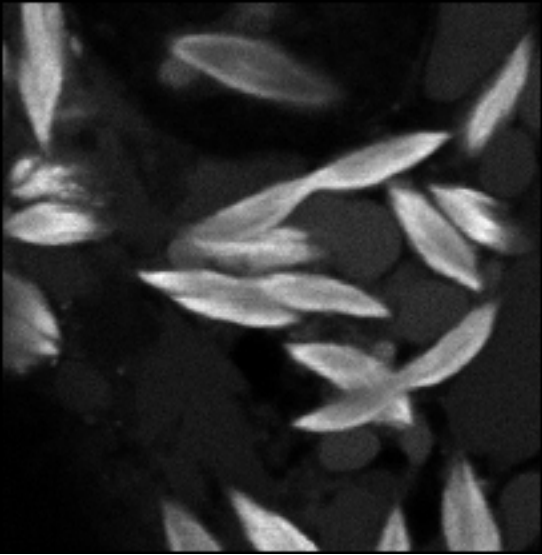


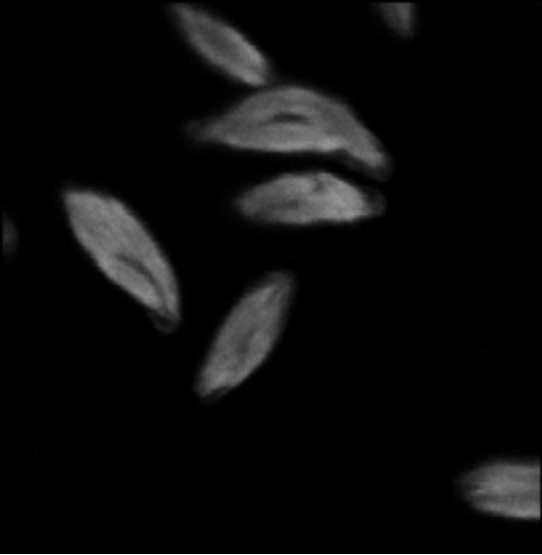














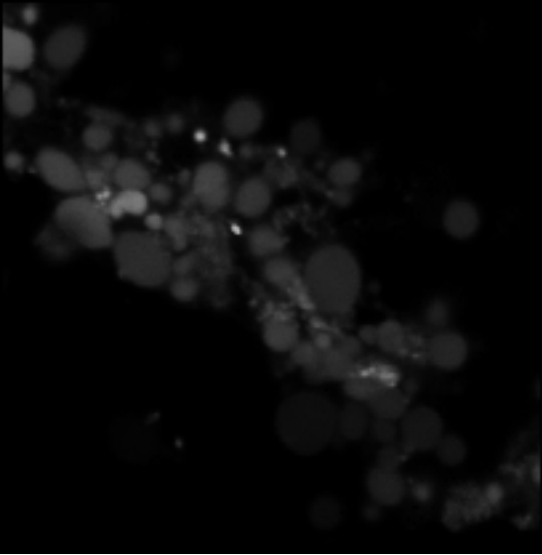




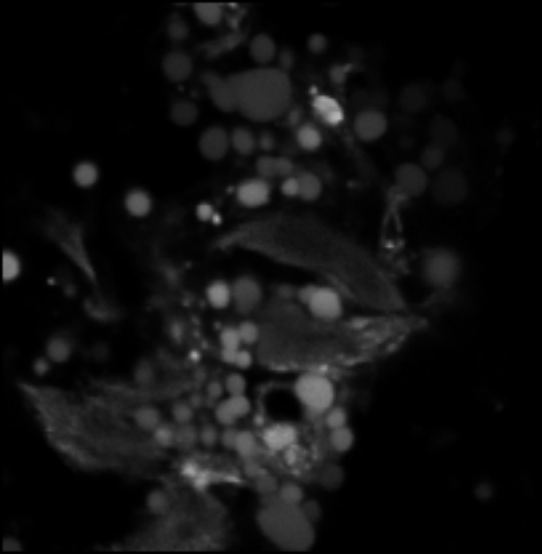


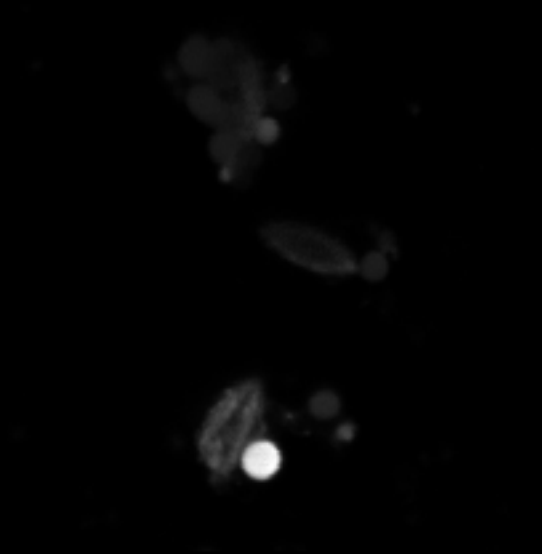














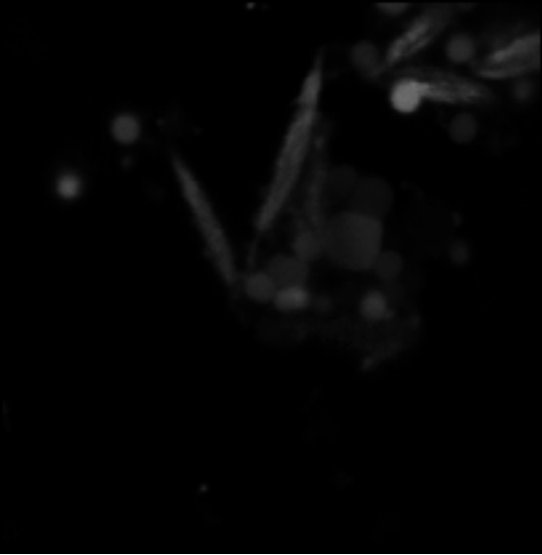
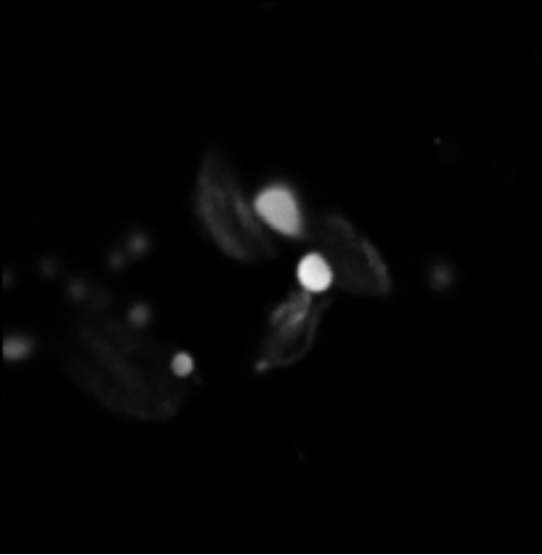


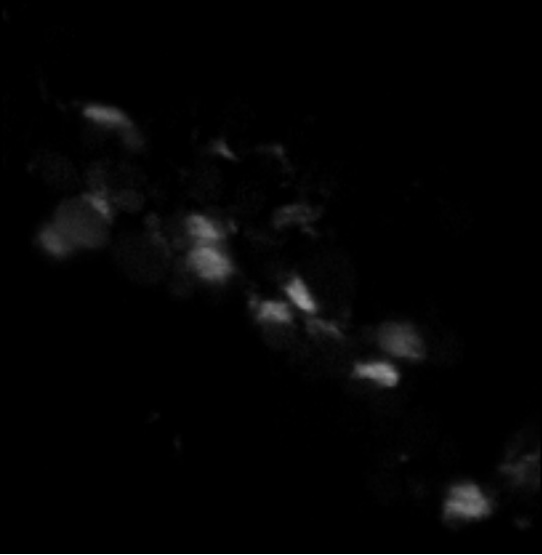


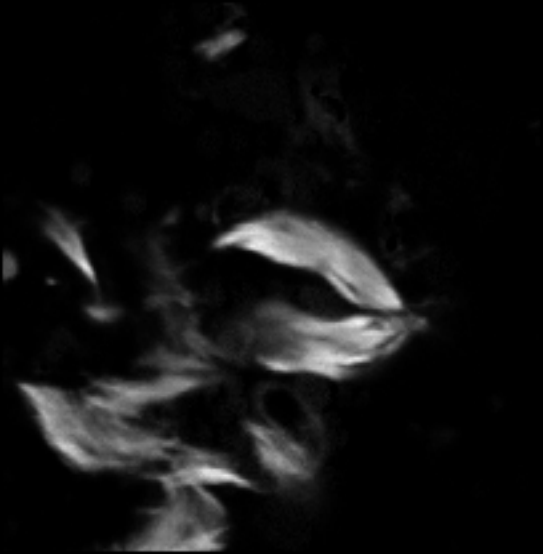


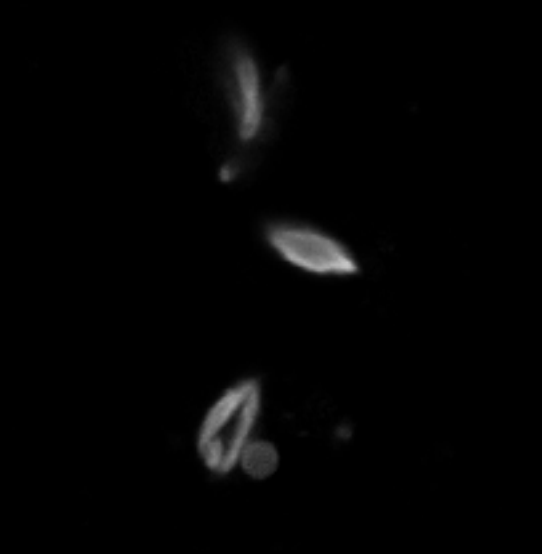


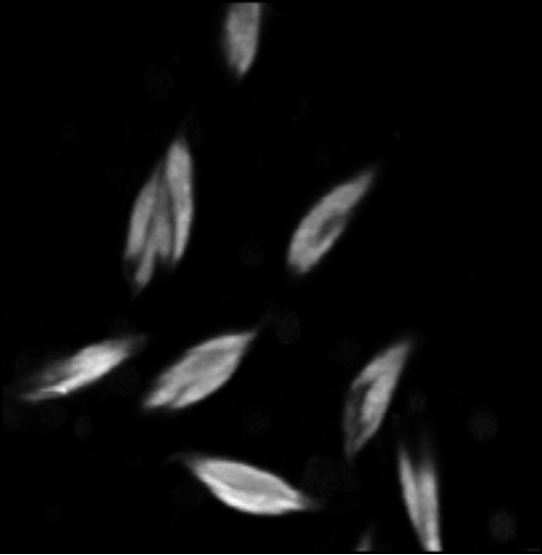
Figure 1. Developmental stages of the biological specimen. The images show a progression from early, diffuse structures to highly developed, segmented forms.



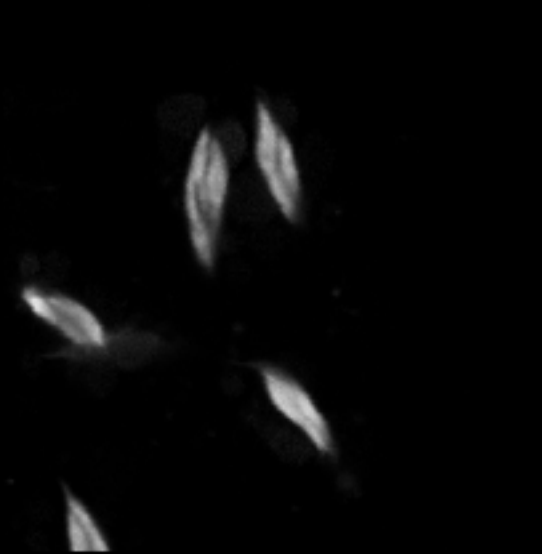


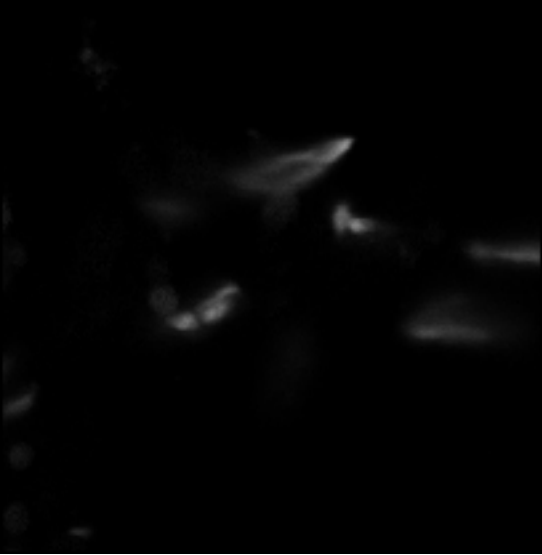














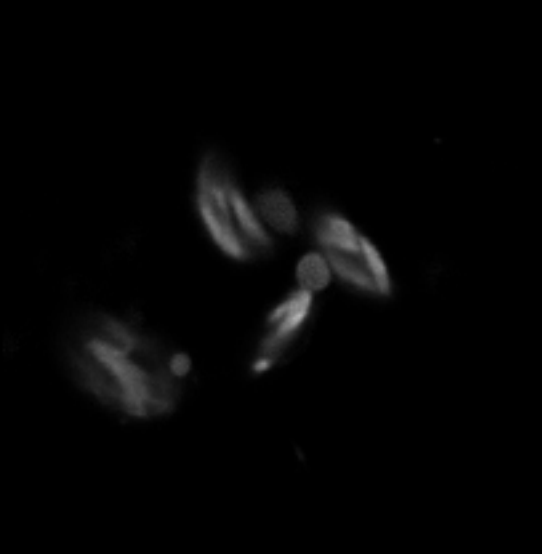












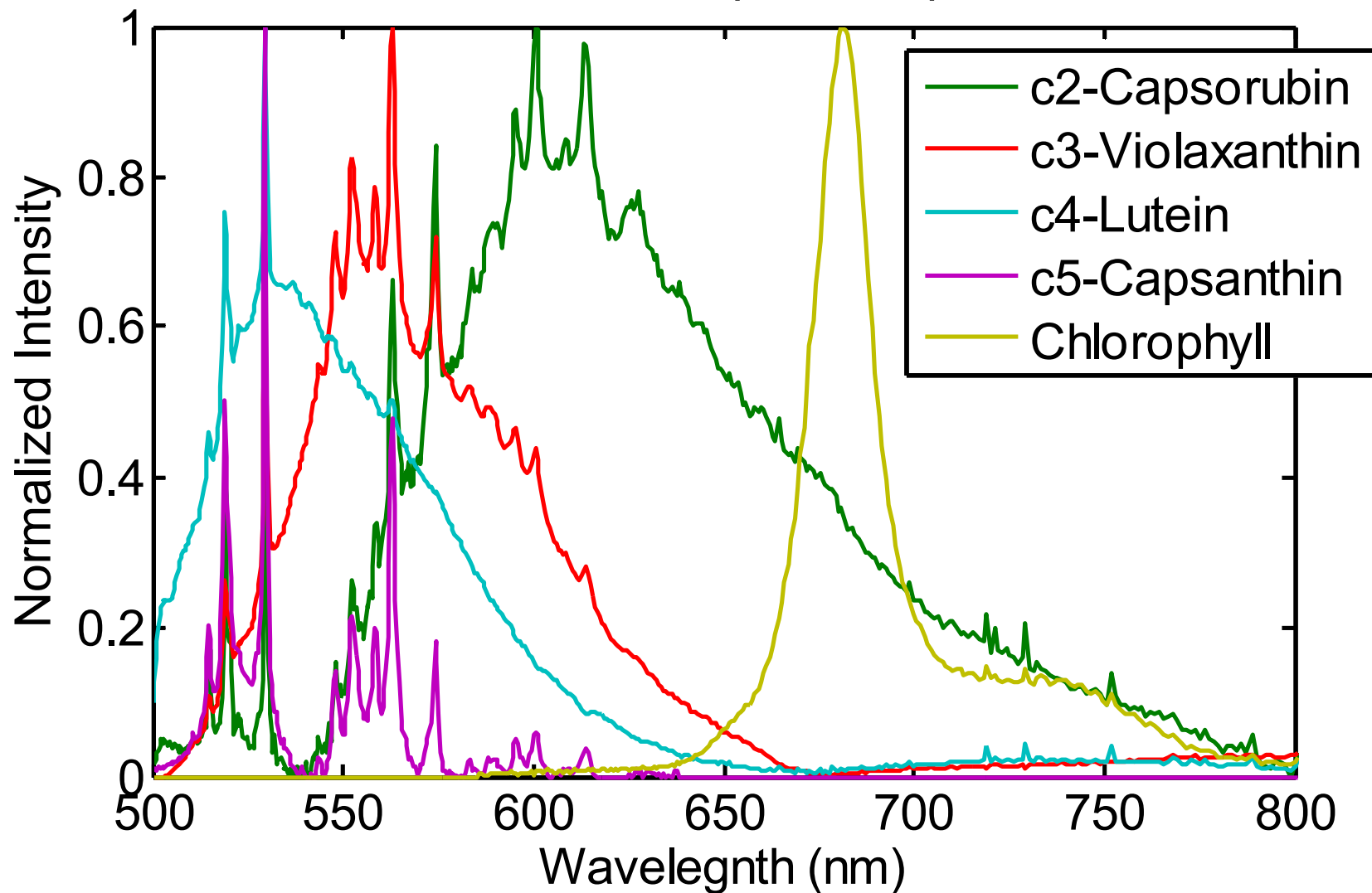


Figure 1. Microscopic view of cells showing various morphological features.

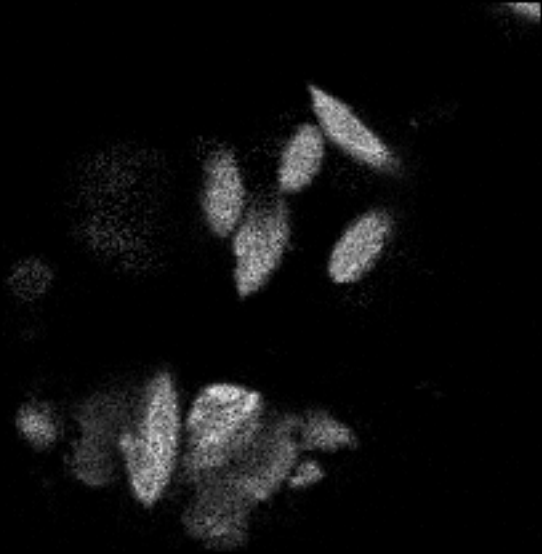


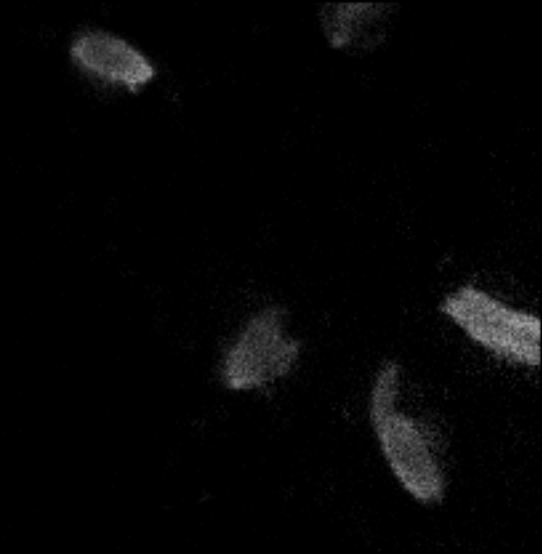


MCR Pure Component Spectra



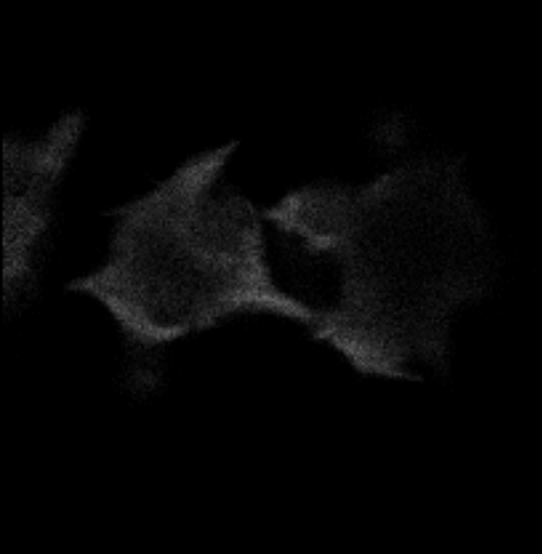




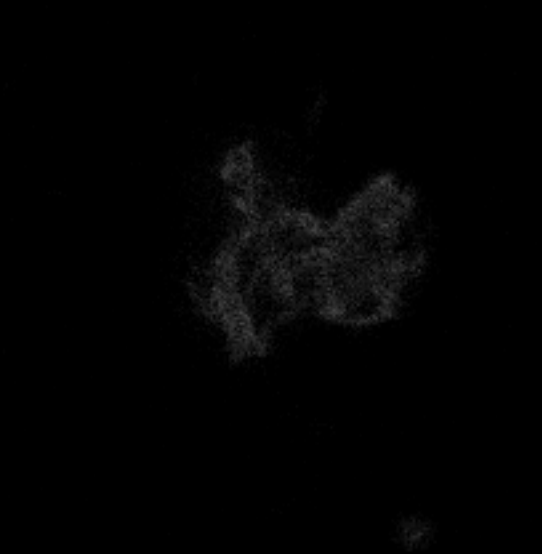




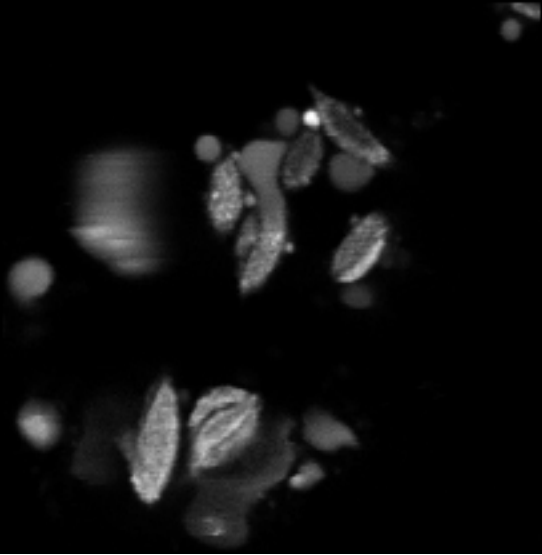


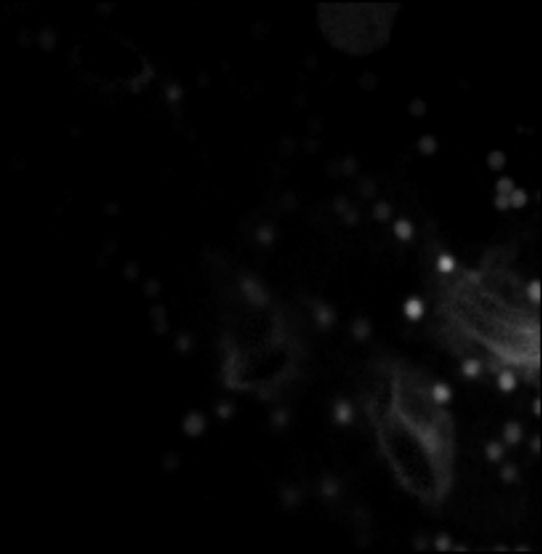












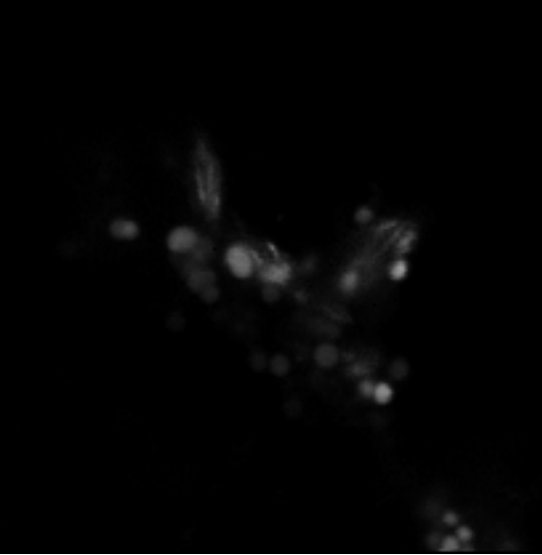




Figure 1. The location of the 1000 m depth contour (solid line), the 500 m depth contour (dashed line) and the 200 m depth contour (dotted line) in the North Sea. The map shows the location of the study area in the North Sea, with the 1000 m depth contour (solid line), the 500 m depth contour (dashed line) and the 200 m depth contour (dotted line).

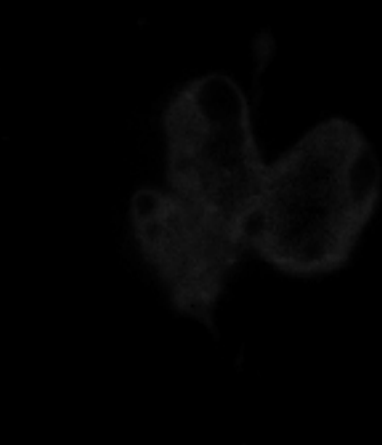


The first part of the paper discusses the importance of understanding the cultural context of the research. It highlights the need for researchers to be sensitive to the values and beliefs of the communities they are studying. This is particularly important in the field of health care, where cultural differences can significantly impact patient outcomes.

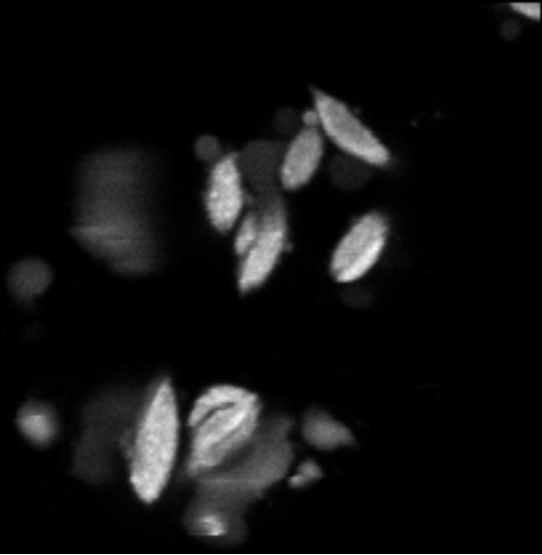
The second part of the paper focuses on the methodology used in the study. It describes the process of selecting participants, collecting data, and analyzing the results. The authors emphasize the importance of using a mixed-methods approach, which combines qualitative and quantitative techniques to provide a more comprehensive understanding of the research topic.

The third part of the paper presents the findings of the study. It discusses the results of the qualitative interviews and the quantitative survey data. The authors note that there are significant differences in health care utilization between different cultural groups, and they provide examples of how these differences manifest in practice.

The final part of the paper discusses the implications of the findings for health care practice and policy. It suggests that health care providers should be trained to recognize and address cultural differences in their patients. Additionally, it recommends that health care systems should develop policies and procedures that are culturally sensitive and inclusive.







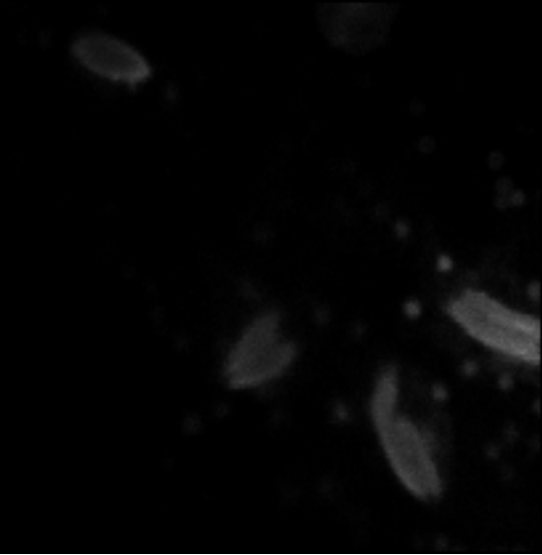






Figure 1. Map of the study area in the North Sea. The 100-m depth contour is shown as a solid line, and the 1000-m depth contour is shown as a dashed line. The shaded region indicates the study area.

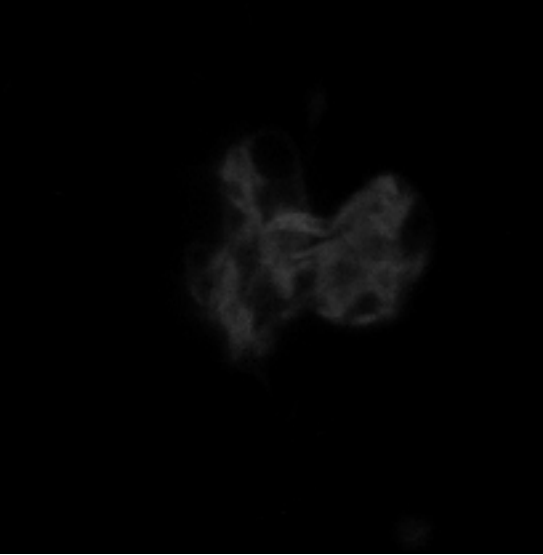
4.1. *Geographical and bathymetric characteristics*

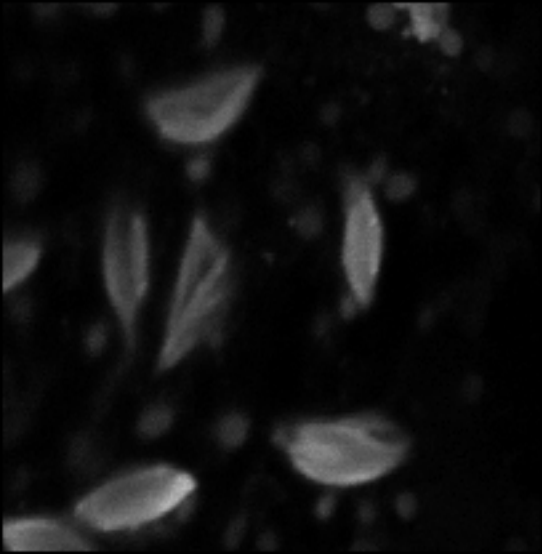
The study area is located in the central North Sea, between 56°N and 58°N latitude and 2°E and 6°E longitude (Figure 1). The area is bounded by the 100-m and 1000-m depth contours.

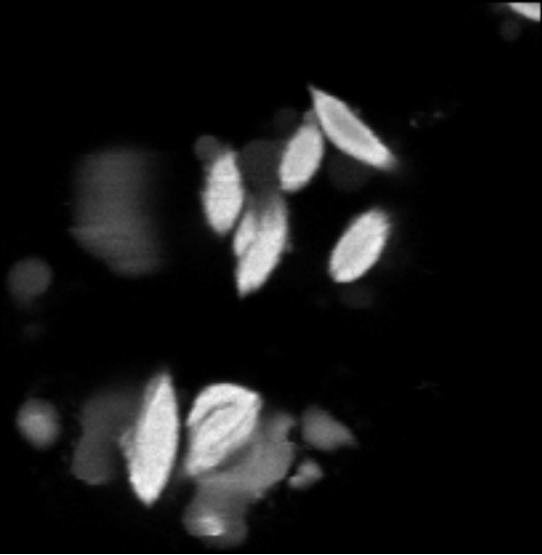
The bathymetry of the study area is characterized by a deep, narrow channel (the Dogger Bank) running north-south, and a shallower, wider area (the Humbly Grove Bank) to the east. The depth of the channel is greater than 1000 m, while the depth of the bank is less than 100 m.

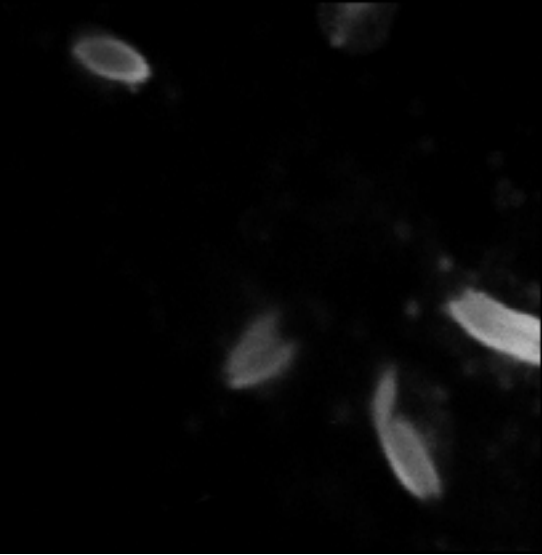




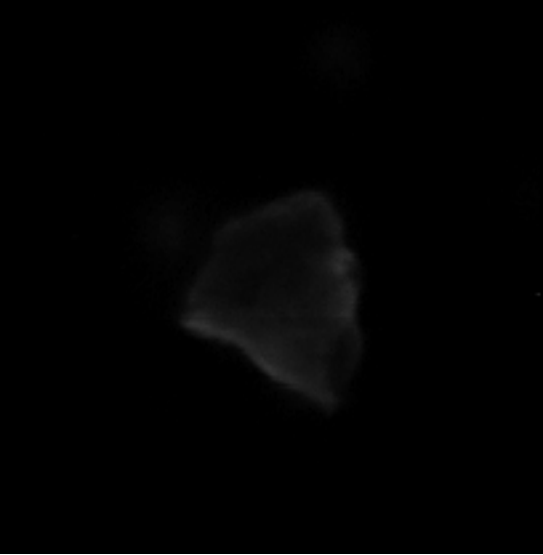


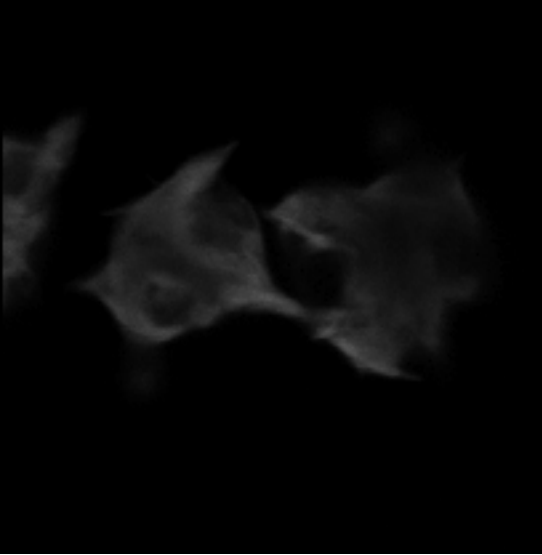












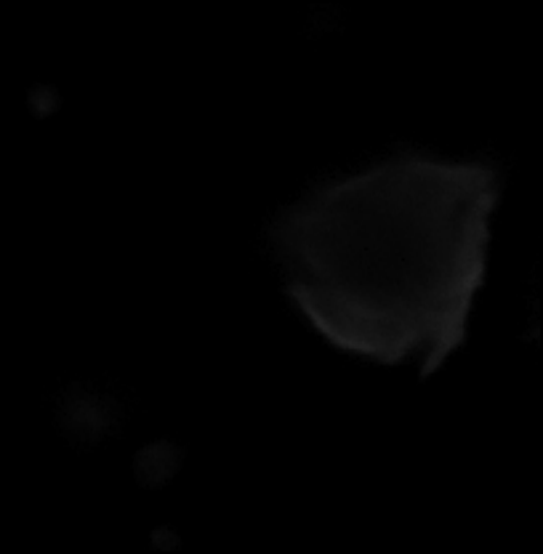




Figure 1. Distribution of the invasive species in the study area in the year (a) 2000 and (b) 2005. The red shading indicates the density of the species, with the highest density (red) in the central part of the study area.



