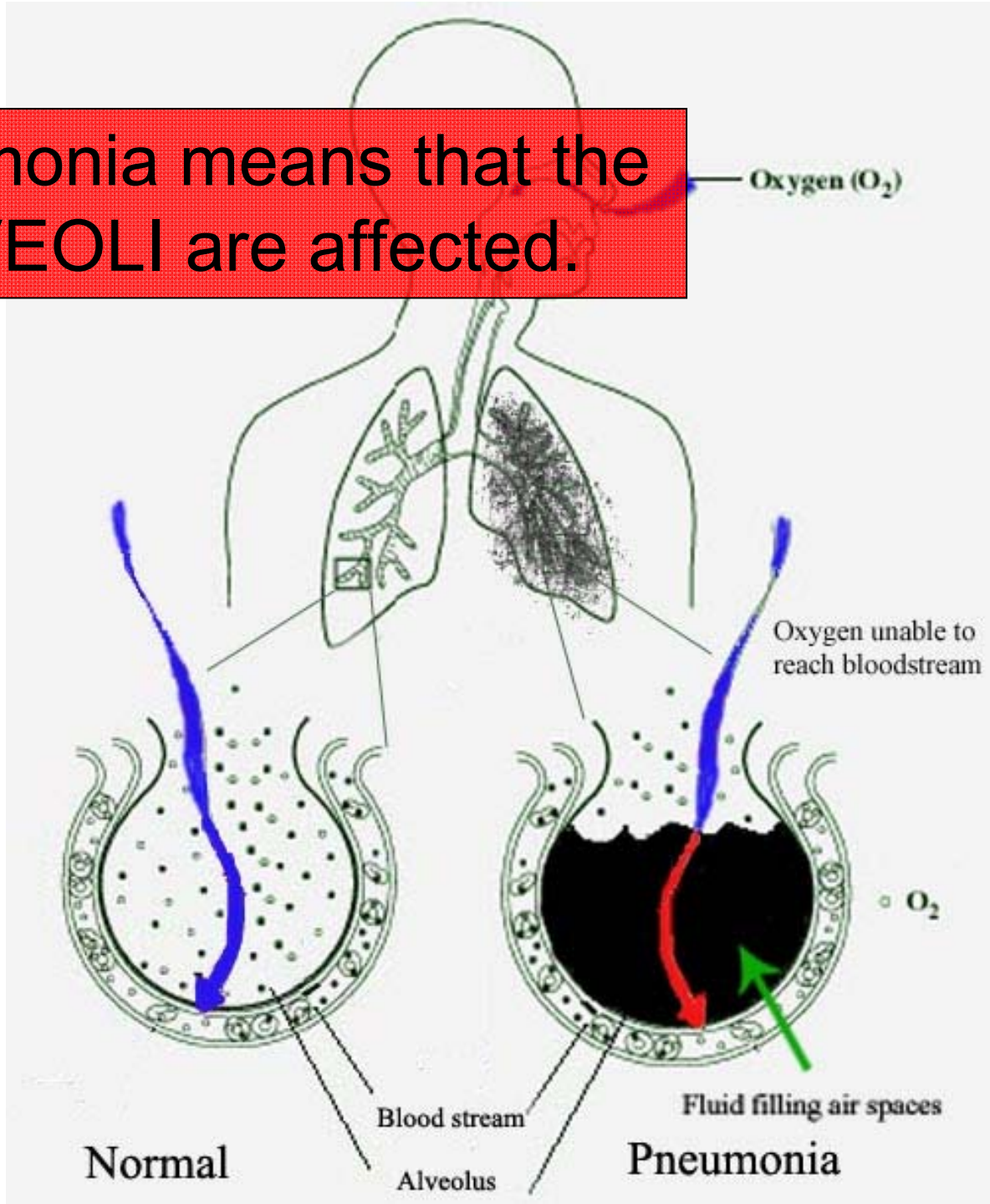


PNEUMONIA

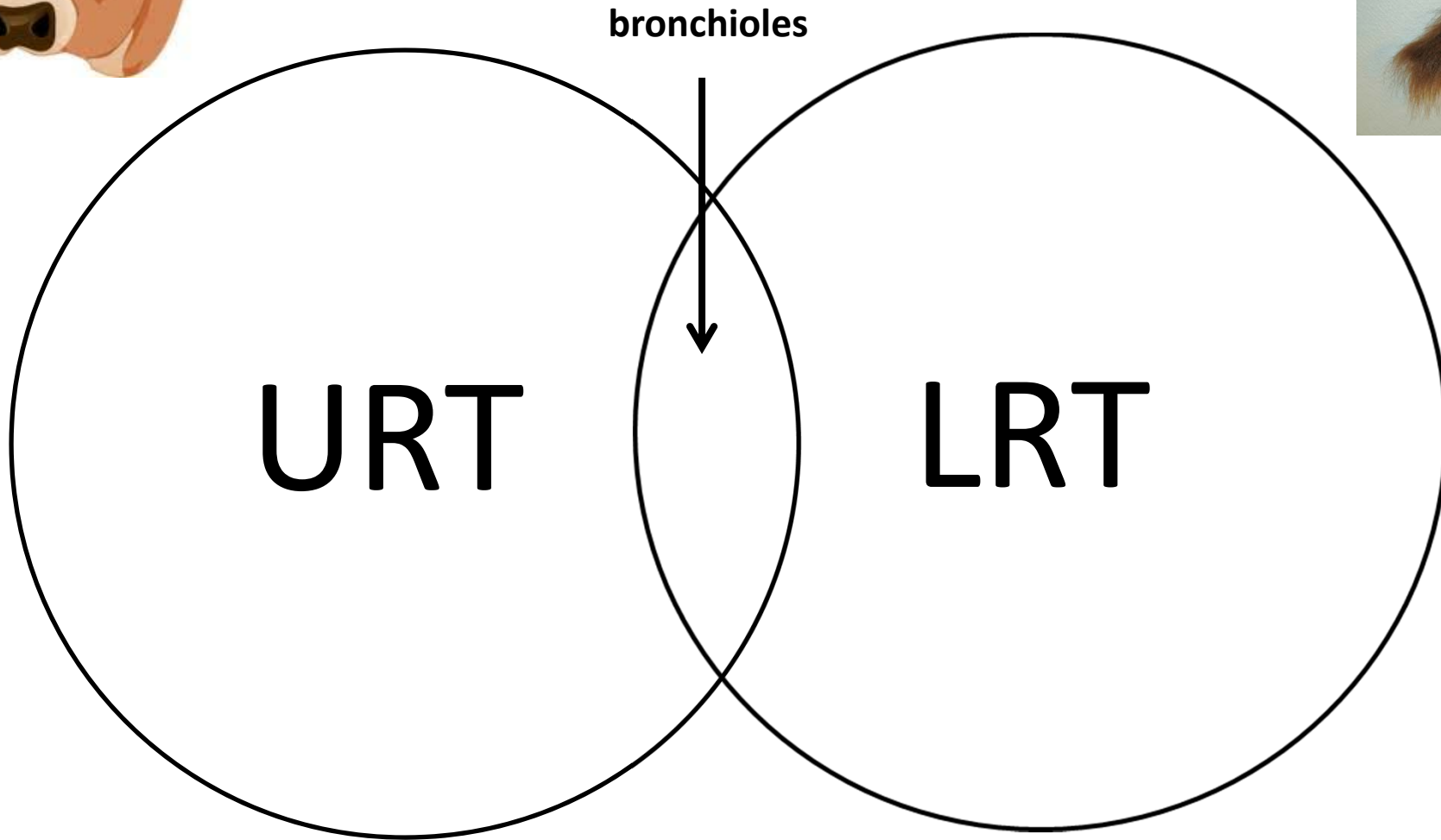
- What is it?
- Categories?
- Pneumonias with a specific etiology
 - Viral
 - Bacterial
 - Fungal

Pneumonia means that the ALVEOLI are affected.



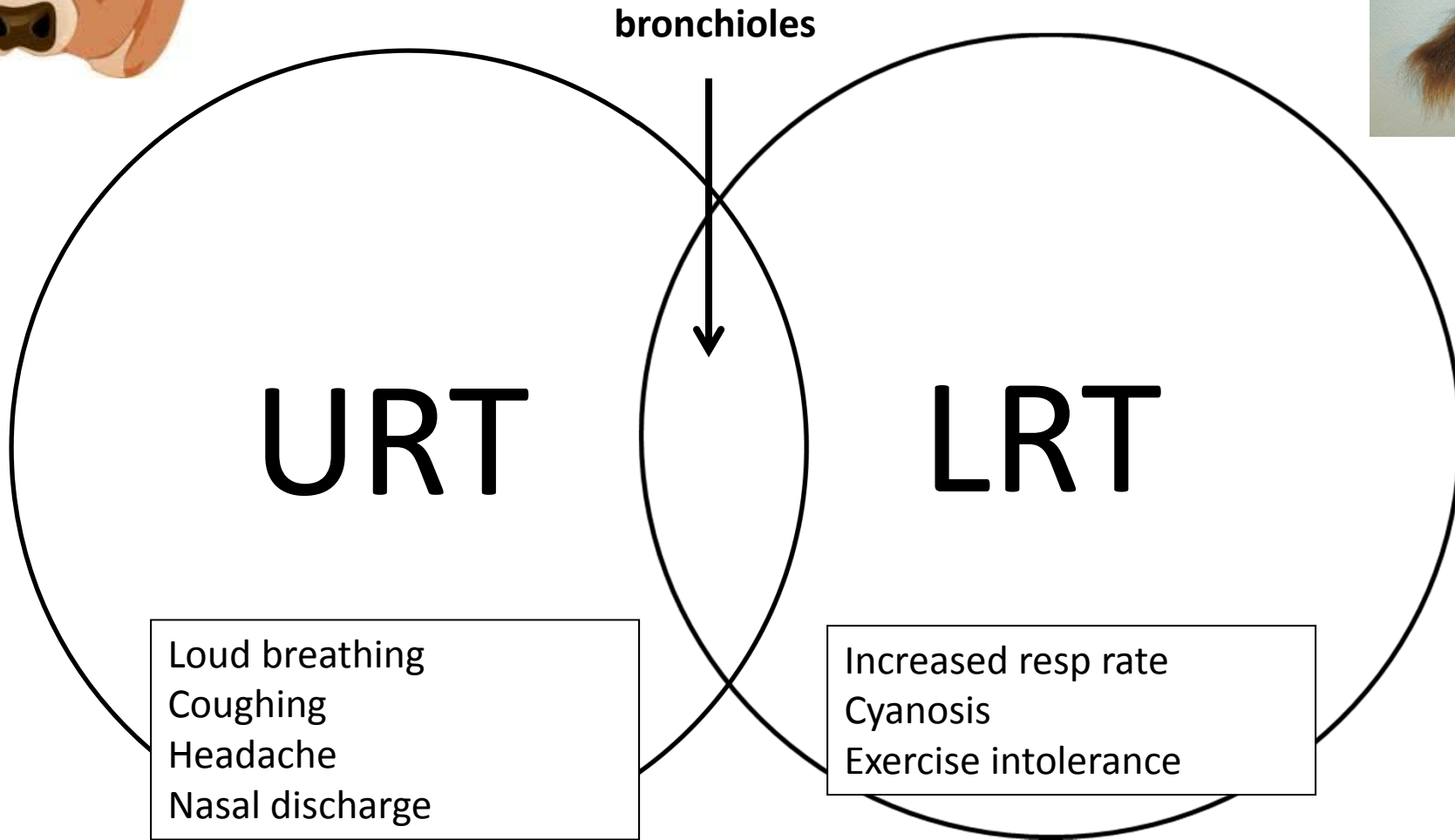


Clinical signs associated with disorders in each?





Clinical signs associated with disorders in each?



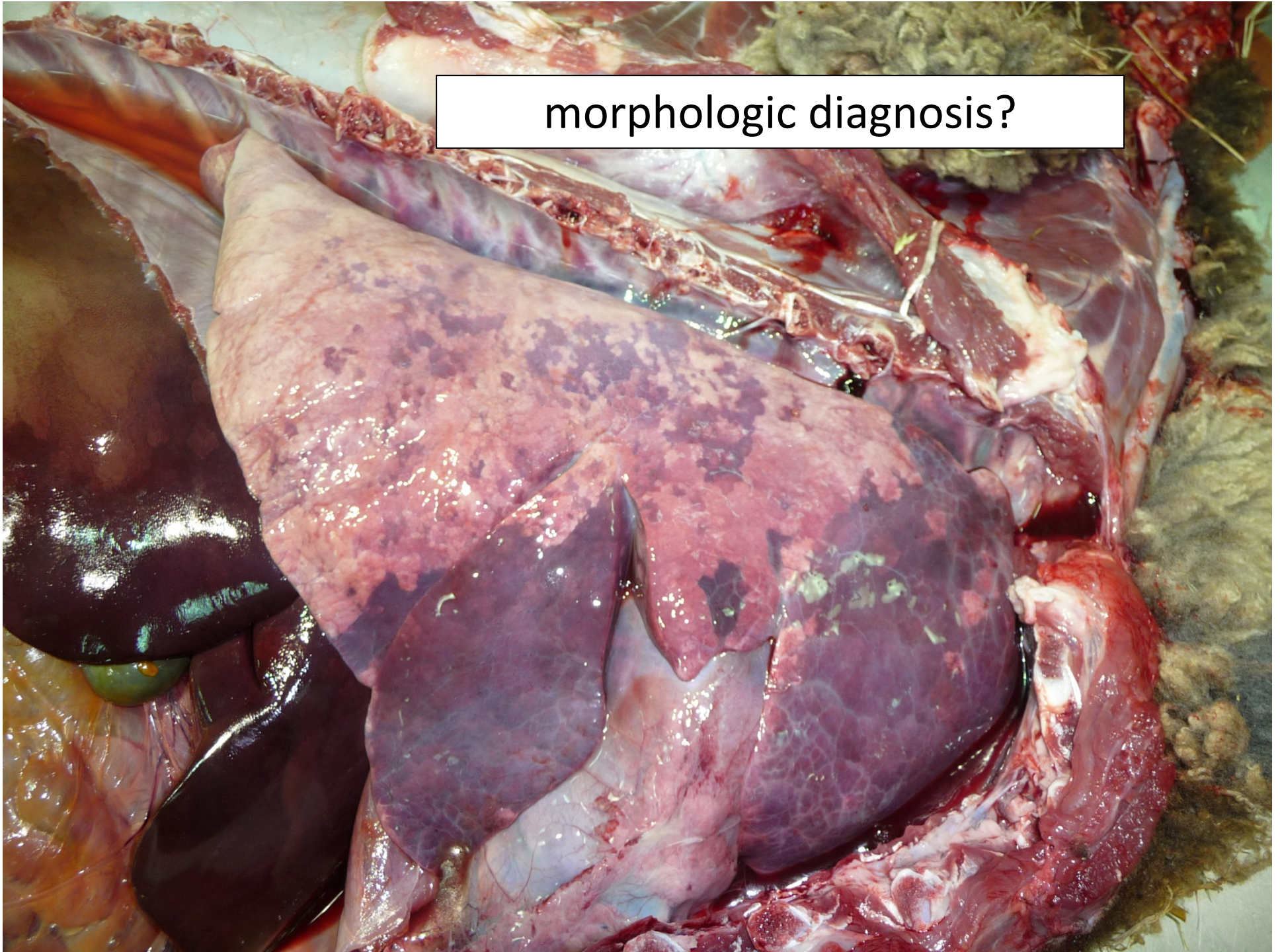
Types of Pneumonia

CATEGORIES

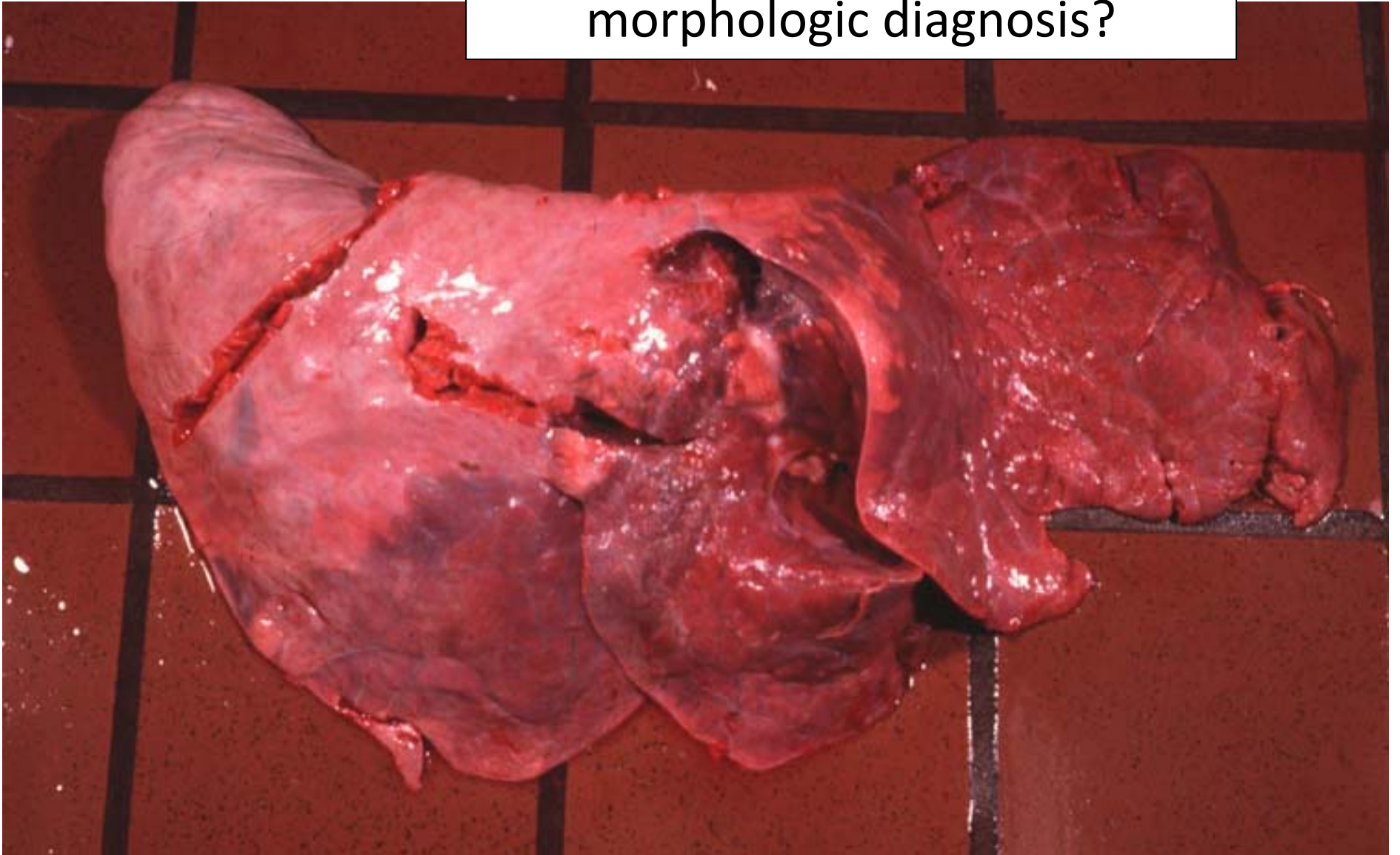


| Type of pneumonia | Portal of entry | Lesion distribution | Kind of exudates | Example |
|-------------------------|----------------------------|--------------------------|---|--|
| Broncho-pneumonia | Aerogenous | cranioventral | Suppurative or fibrinous, on surfaces (bronchi, pleura) | Enzootic pneumonia, shipping fever |
| Interstitial pneumonia | Aerogenous or hematogenous | cranioventral or diffuse | Often can't see them, they are within alveoli | Influenza, PRRS, toxins |
| Granulomatous pneumonia | Aerogenous or hematogenous | Multifocal | Granulomas | TB, Blasto, <i>Aspergillus</i> |
| Embolic pneumonia | Hematogenous | Multifocal | Purulent foci | Septicemia, <i>Actinobacillus equuli</i> |

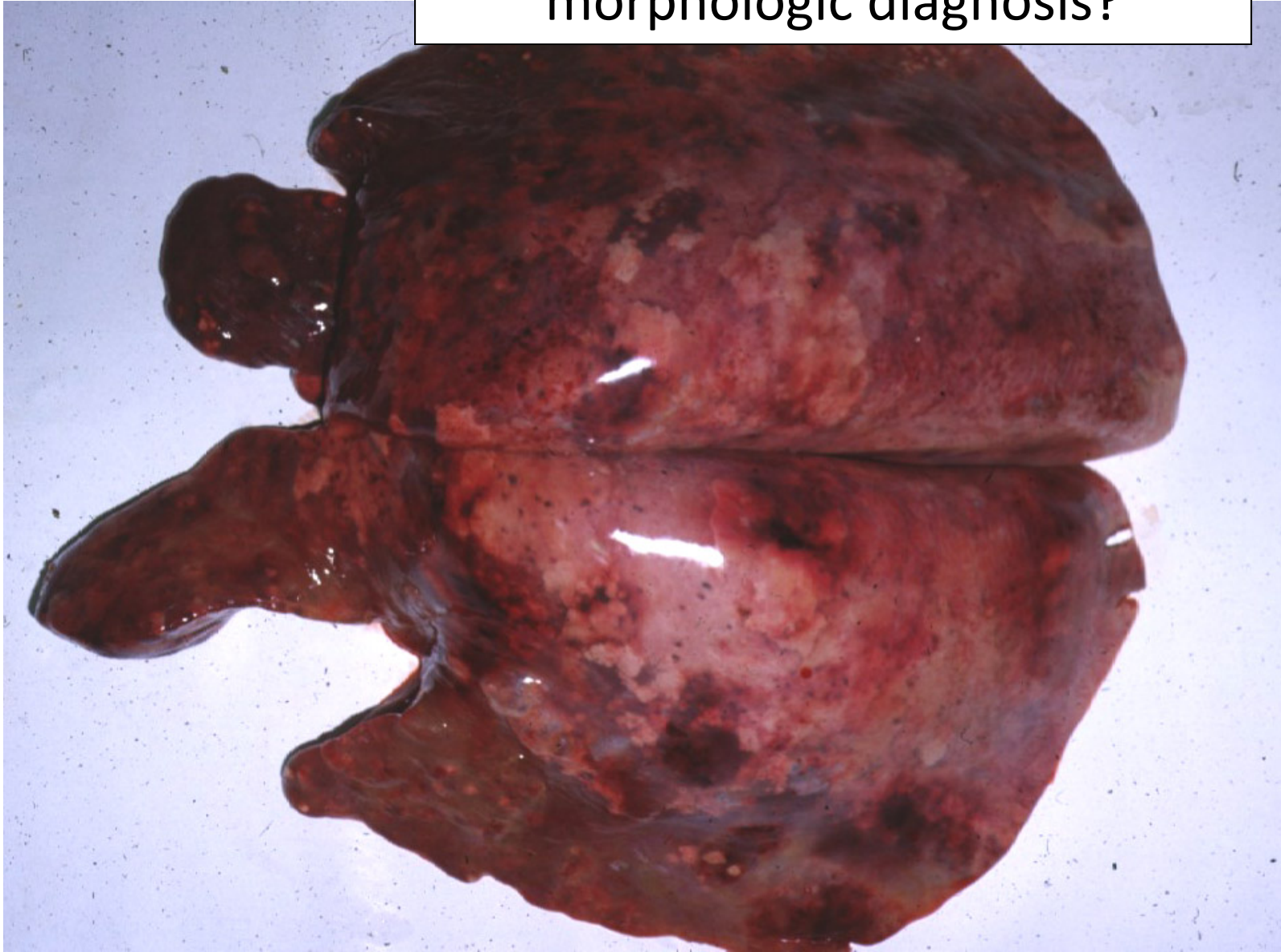
morphologic diagnosis?



morphologic diagnosis?



morphologic diagnosis?



Interstitial pneumonia

- ALL alveolar walls are affected, to varying degrees
- So, it has to be something that gets to the lung through the BLOODSTREAM
- Or, maybe it can be a gas, that is inhaled and goes to all alveoli

Types of Pneumonia

CATEGORIES



| Type of pneumonia | Portal of entry | Lesion distribution | Kind of exudates | Example |
|-------------------------|----------------------------|--------------------------|---|--|
| Broncho-pneumonia | Aerogenous | cranioventral | Suppurative or fibrinous, on surfaces (bronchi, pleura) | Enzootic pneumonia, shipping fever |
| Interstitial pneumonia | Aerogenous or hematogenous | cranioventral or diffuse | Often can't see them, they are within alveoli | Influenza, PRRS, toxins |
| Granulomatous pneumonia | Aerogenous or hematogenous | Multifocal | Granulomas | TB, Blasto, <i>Aspergillus</i> |
| Embolic pneumonia | Hematogenous | Multifocal | Purulent foci | Septicemia, <i>Actinobacillus equuli</i> |





Predisposing causes for aspiration pneumonia?

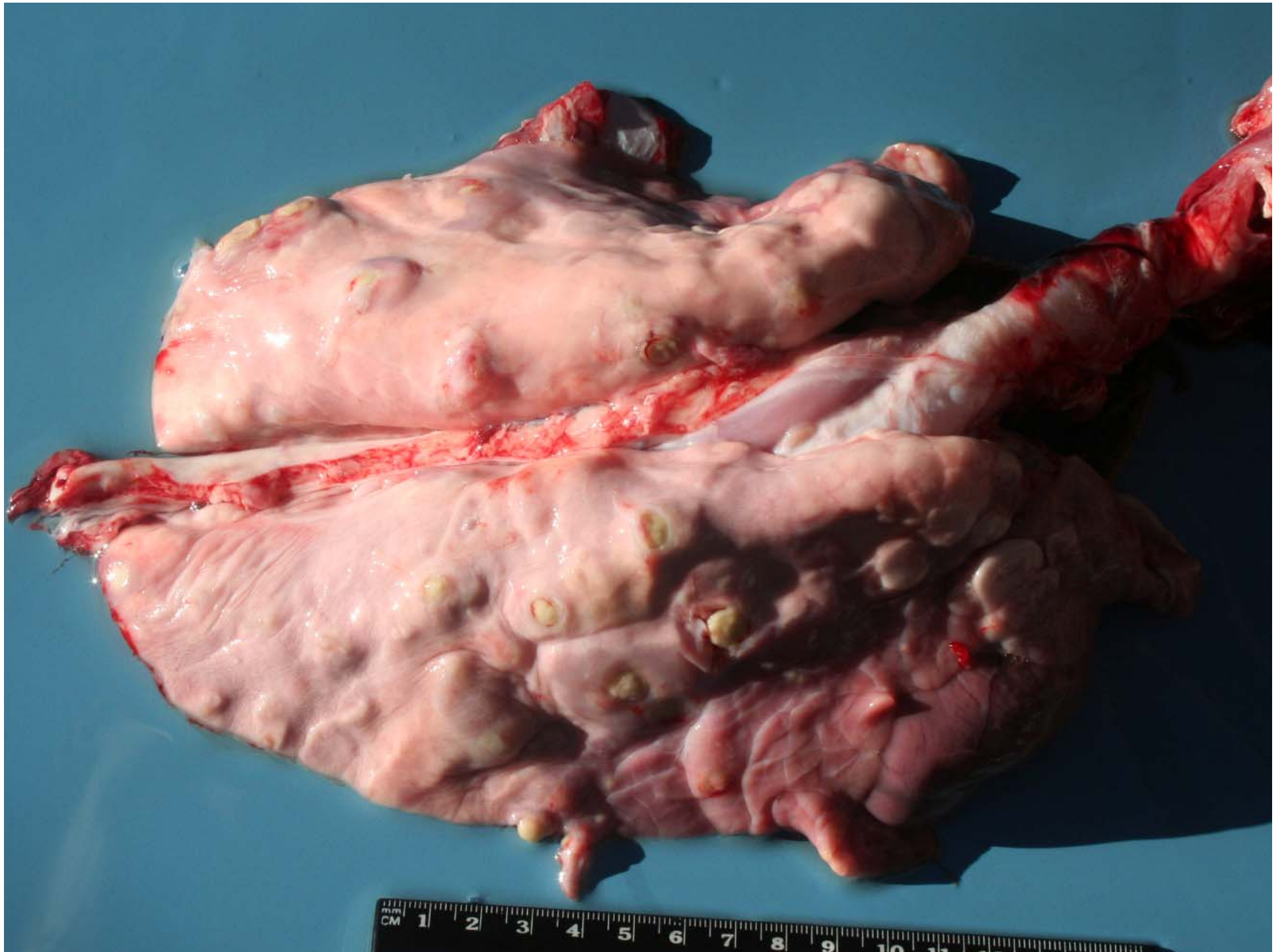
- Megaesophagus
- Swallowing disorder
- Cleft palate
- Unconscious
- Tube feeding

Types of Pneumonia

CATEGORIES



| Type of pneumonia | Portal of entry | Lesion distribution | Kind of exudates | Example |
|-------------------------|----------------------------|--------------------------|---|--|
| Broncho-pneumonia | Aerogenous | cranioventral | Suppurative or fibrinous, on surfaces (bronchi, pleura) | Enzootic pneumonia, shipping fever |
| Interstitial pneumonia | Aerogenous or hematogenous | cranioventral or diffuse | Often can't see them, they are within alveoli | Influenza, PRRS, toxins |
| Granulomatous pneumonia | Aerogenous or hematogenous | Multifocal | Granulomas | TB, Blasto, <i>Aspergillus</i> |
| Embolic pneumonia | Hematogenous | Multifocal | Purulent foci | Septicemia, <i>Actinobacillus equuli</i> |

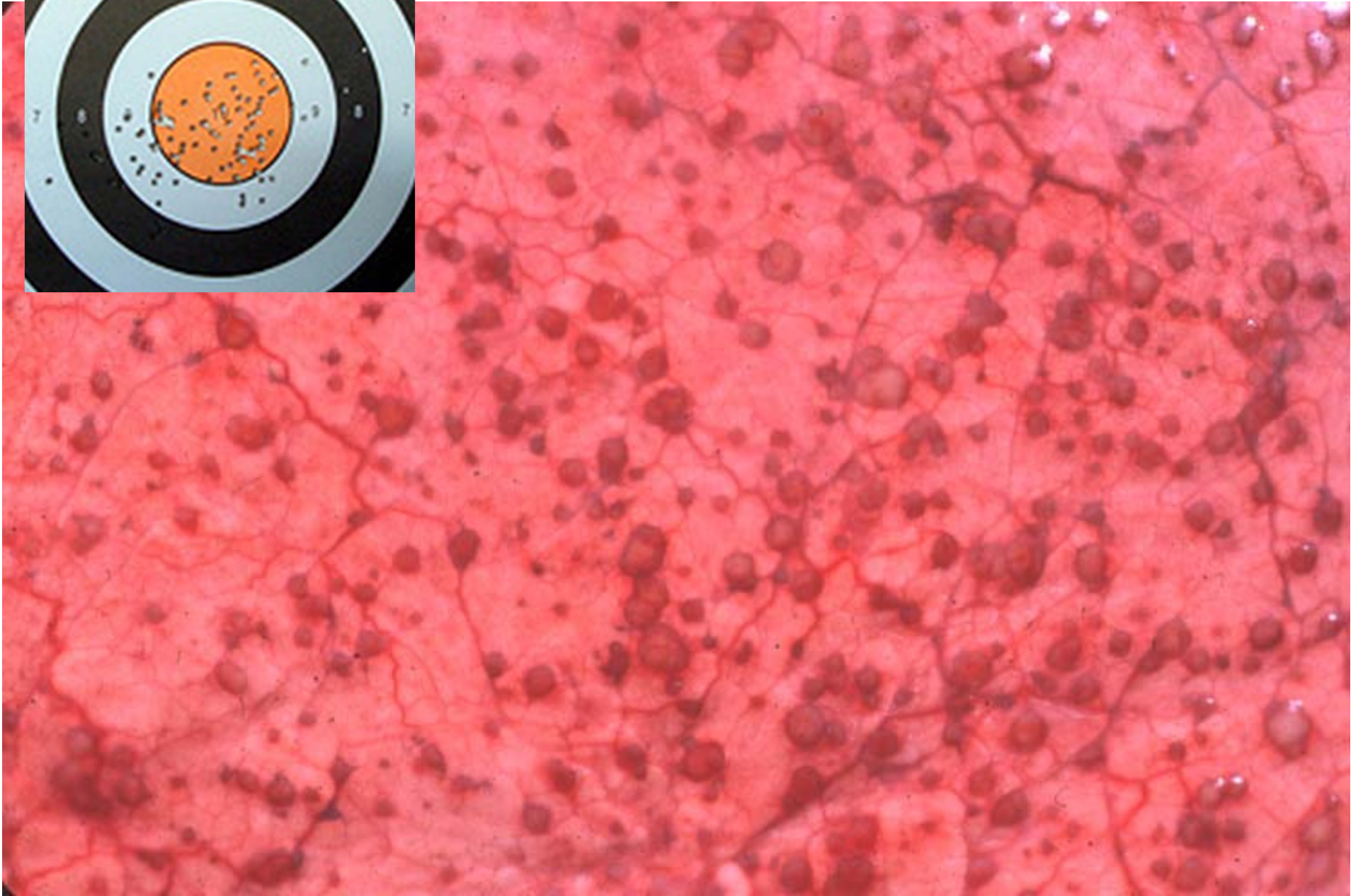


Types of Pneumonia

CATEGORIES



| Type of pneumonia | Portal of entry | Lesion distribution | Kind of exudates | Example |
|-------------------------|----------------------------|--------------------------|---|--|
| Broncho-pneumonia | Aerogenous | cranioventral | Suppurative or fibrinous, on surfaces (bronchi, pleura) | Enzootic pneumonia, shipping fever |
| Interstitial pneumonia | Aerogenous or hematogenous | cranioventral of diffuse | Often can't see them, they are within alveoli | Influenza, PRRS, toxins |
| Granulomatous pneumonia | Aerogenous or hematogenous | Multifocal | Granulomas | TB, Blasto, <i>Aspergillus</i> |
| Embolic pneumonia | Hematogenous | Multifocal | Purulent foci | Septicemia, <i>Actinobacillus equuli</i> |



Embolic pneumonias

- The stuff that is embolizing to the lung has to come from somewhere.....
- What are the possible origins?



Bronchopneumonias are

- A. Usually diffuse in the lung
- B. Always due to viruses
- C. Often subsequent to impaired defenses
- D. Invariably bacterial



Bronchopneumonias are

- A. Usually diffuse in the lung
- B. Always due to viruses
- C. Often subsequent to impaired defenses
- D. Invariably bacterial



Interstitial pneumonias are

- A. Usually anteroventral
- B. Always due to viruses
- C. Often subsequent to impaired defenses
- D. Centered on the alveoli



Interstitial pneumonias are

- A. Usually anteroventral
- B. Always due to viruses
- C. Often subsequent to impaired defenses
- D. Centered on the alveoli



Granulomatous pneumonias are

- A. Caused by higher order bacteria and fungi
- B. Hard to treat
- C. Characterized by granulomas anywhere in the lung
- D. All of the above are true



Granulomatous pneumonias are

- A. Caused by higher order bacteria and fungi
- B. Hard to treat
- C. Characterized by granulomas anywhere in the lung
- D. All of the above are true

