

**U.S. DEPARTMENT OF ENERGY
SANDIA CORPORATION**

**SANDIA NATIONAL LABORATORIES
EPA ID NM5890110518**

New Mexico Environment Department
Soil Samples
Thermal Treatment Unit

November 21, 2013

Figures and Photos

Figure 1. NMED TTU Soil Sample Locations, November 21, 2013

Figure 2. Personnel Collecting Sample TTU-1

Figure 3. Location of Sample TTU-2

Figure 4. Location of Samples TTU-3 and TTU-3 dup

Figure 5. Location of Sample TTU-4

Figure 1. NMED TTU Soil Sample Locations, November 21, 2013

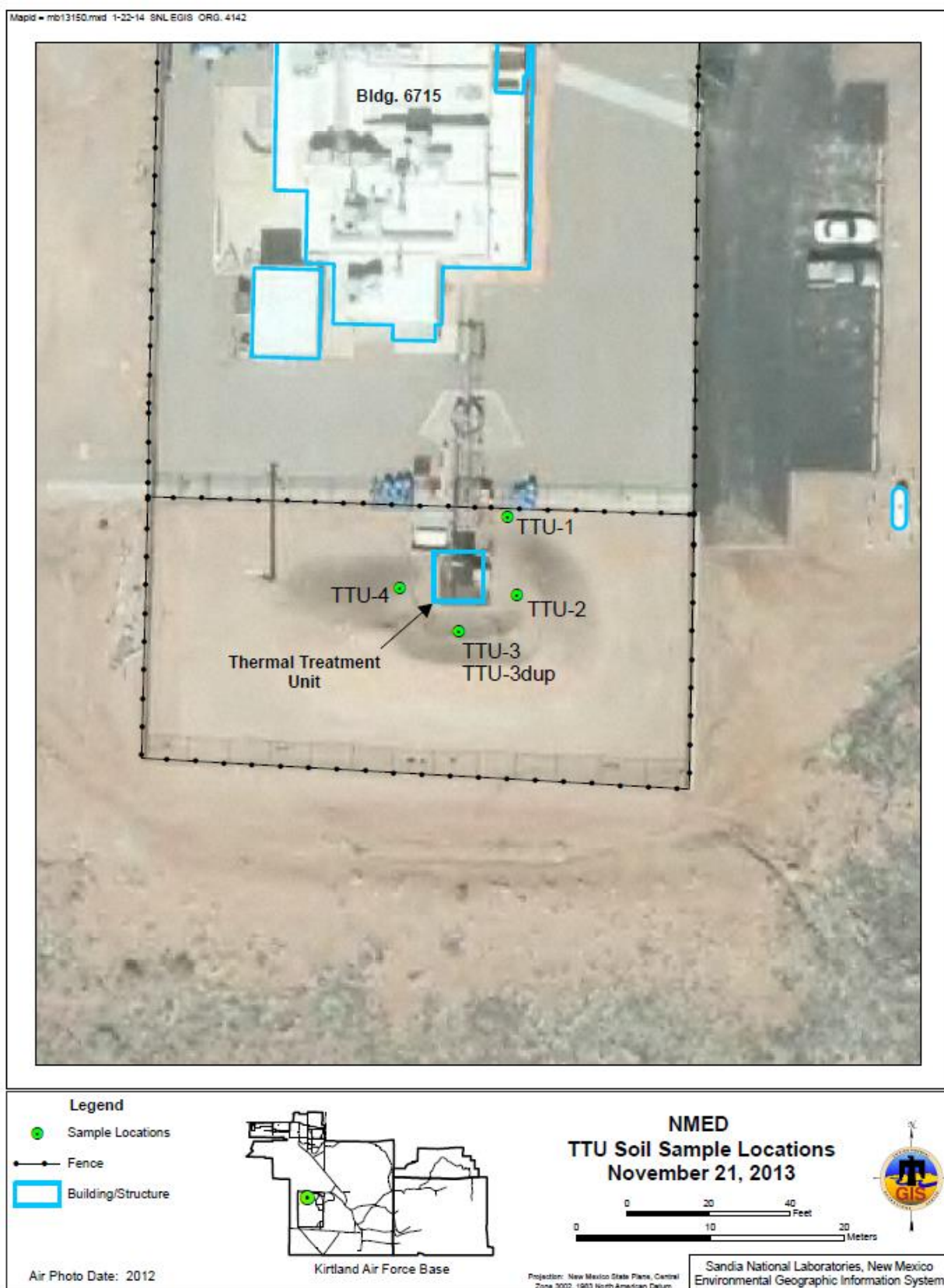


Figure 2. Personnel Collecting Sample TTU-1



The TTU burn cage and soil berm are visible. The fence at the north edge of the TTU is visible in the foreground.

Figure 3. Location of Sample TTU-2



The sample was collected from 0-6 inch depth in the disturbed area at the base of the marker flag on the inside face of the east berm.

Figure 4. Location of Samples TTU-3 and TTU-3 dup



The samples were collected from 0-6 inch depth in the disturbed area at the base of the marker flag on the inside face of the south berm

Figure 5. Location of Sample TTU-4



The sample was collected from 0-6 inch depth in the disturbed areas on the inside face of the west berm.