

08/16/2011

GOMA 6.0: Computational Mechanics Capabilities for Manufacturing: Thin-film Coating and Drying, Imprinting/Embossing, Dispersion casting

P. R. Schunk et al.
Nanoscale and Reactive Processes
Department
Sandia National Laboratories

Title



Sandia National Laboratories is a multi program laboratory managed and operated by Sandia Corporation, a wholly owned subsidiary of Lockheed Martin Corporation, for the U.S. Department of Energy's National Nuclear Security Administration under contract DE-AC04-94AL85000.



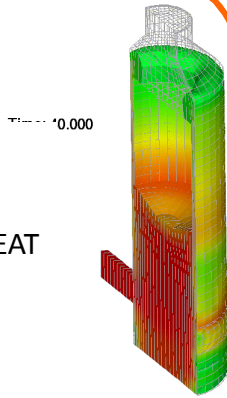
COMPUTER SIMULATIONS IN MANUFACTURING AT SANDIA – *GOMA 6.0, A Multiphysics Finite Element Code*

MOLD FILLING

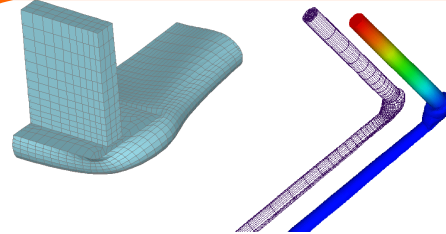
-POLYMERS

-METALS

--FLUID FLOW, HEAT
PHASE CHANGE,
FREE SURFACES



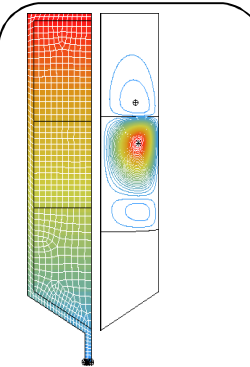
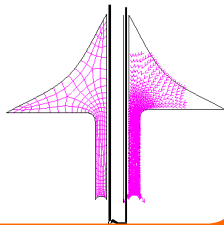
DP



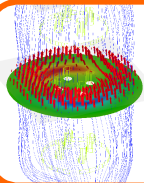
EXTRUSION AND COATING
3D FLUID FLOW, FREE SURF

SOLDERING

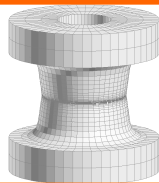
-HEAT, MOMENTUM,
FREE SURFACE,
SOLIDIFICATION



ALLOY
PROCESSING

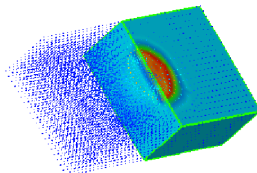
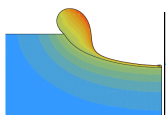


BRAZING, FURNACE
MODELING



WELDING

-HEAT, MOMENTUM,
SOLIDIFICATION,



- COUPLED OR SEPARATE HEAT, N-SPECIES, MOMENTUM (SOLID AND FLUID) TRANSPORT

- FULLY-COUPLED FREE AND MOVING BOUNDARY PARAMETERIZATION

- SOLIDIFICATION, PHASE-CHANGE, CONSOLIDATION, REACTION OF PURE AND BLENDED MATERIALS

- HOST OF MATERIAL MODELS FOR COMPLEX RHEOLOGICAL FLUIDS AND SOLIDS

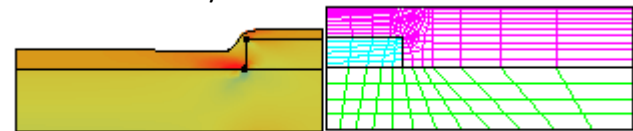
UNIQUE FEATURES

- FREE SURFACES ARE UBIQUITOUS

- COUPLED FLUID-SOLID MECHANICS

- COMPLEX MATERIAL RHEOLOGY/LOW SPEED

COATING/ENCAPSULATION



CRMPC CRADA/DP

GOMA'S CAPABILITY BASED ON CUSTOMER NEED -- INVOLVES MANY TECHNOLOGIES

- 1) **MECHANICS** – INCLUDES ALL MAJOR BRANCHES OF MECHANICS, AND MORE. CONJUGATE CAPABILITY
- 2) **MATERIALS MODELS AND CONSTITUTIVE EQUATIONS** -- INCLUDES GENERALIZED NEWTONIAN AND VE FOR FLUIDS, ELASTIC AND ELASTOVISCOPLASTIC FOR SOLIDS, FICKIAN, MULTICOMPONENT, AND NON-FICKIAN FLUXES, AND MORE
- 3) **FREE SURFACE/FREE BOUNDARY TRACKING** -- SOLIDIFICATION SURFACES, CAPILLARY FREE SURFACES, CONSOLIDATION FRONTS, MOLD FILLING FRONTS, SATURATION FRONTS, USER-PRESCRIBED KINEMATICS/GEOMETRY, ABLATION FRONTS, AND MORE
- 4) **MULTIDIMENSIONAL WITH 2.5D CAPABILITY. FULL SHELL CAPABILITY.**
- 5) **PLATFORM GENERALITY.** HIGH-END, HIGH-PERFORMANCE, AND COMMODITY HARDWARE

GOMA'S CAPABILITY BASED ON CUSTOMER NEED -- INVOLVES MANY TECHNOLOGIES

6) **USER-PRESCRIBED/USER-DEFINED CAPABILITY**

7) **FLUID-STRUCTURAL INTERACTIONS**. *COMPUTATIONAL LAGRANGIAN SOLIDS AND ALE IN BOTH SOLIDS AND FLUIDS WITH EULERIAN-EULERIAN METHODS AN ACTIVE RESEARCH AREA*

8) **SATURATED AND UNSATURATED, DEFORMABLE, POROUS MEDIA** - PORO-ELASTIC/PORO-PLASTIC

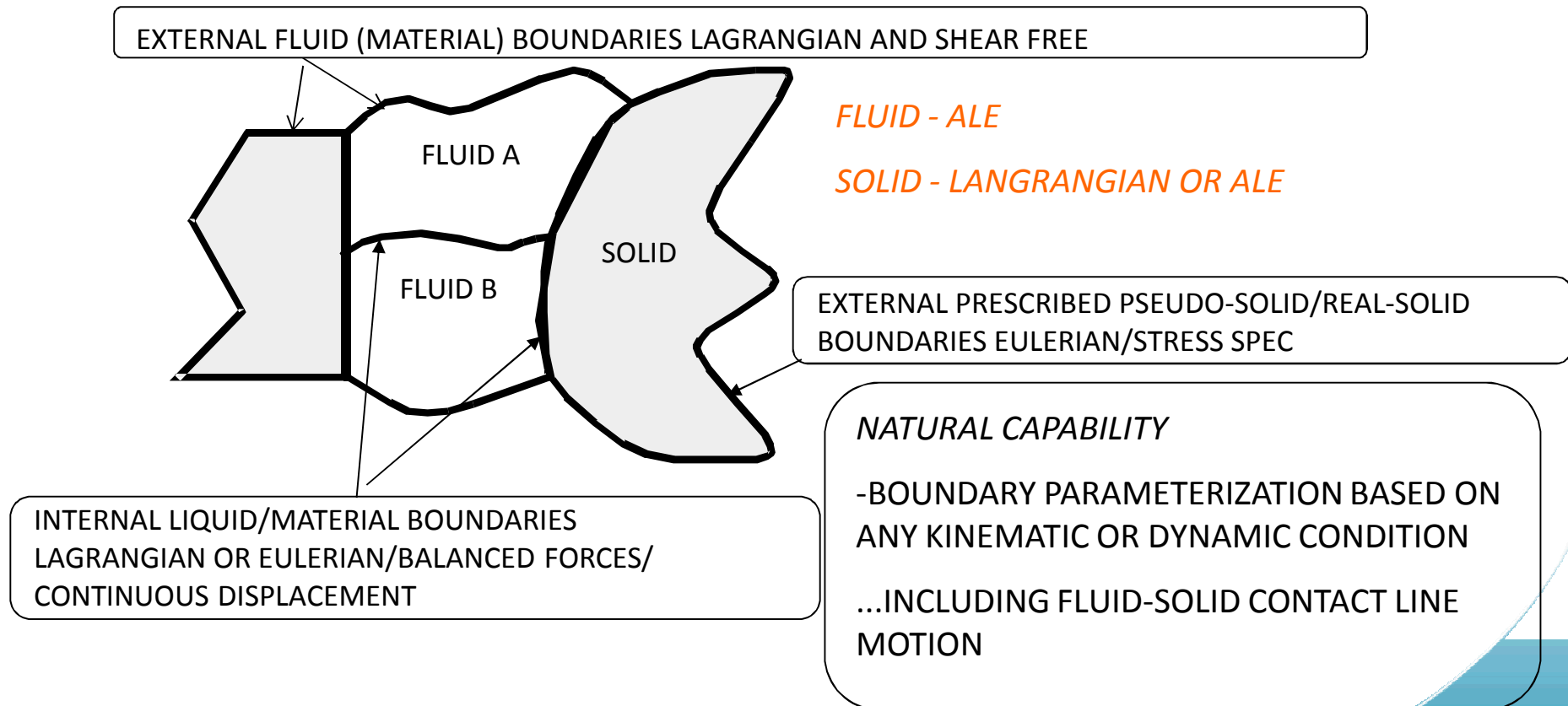
9) **FULL-NEWTON COUPLED ALGORITHMS/AUTOMATED CONTINUATION, AUGMENTING CONDITIONS, STABILITY ANALYSIS** - *ALL IN A PRODUCTION SETTING*

10) **OTHER ADVANCED FEATURES- SHELL REDUCED ORDER MODELS, SOLID-MODEL-BASED GEOMETRY SUPPORT; ADVANCED POST PROCESSING FEATURES**

11) **PIXEL/VOXEL-TO-MESH CAPABILITY**

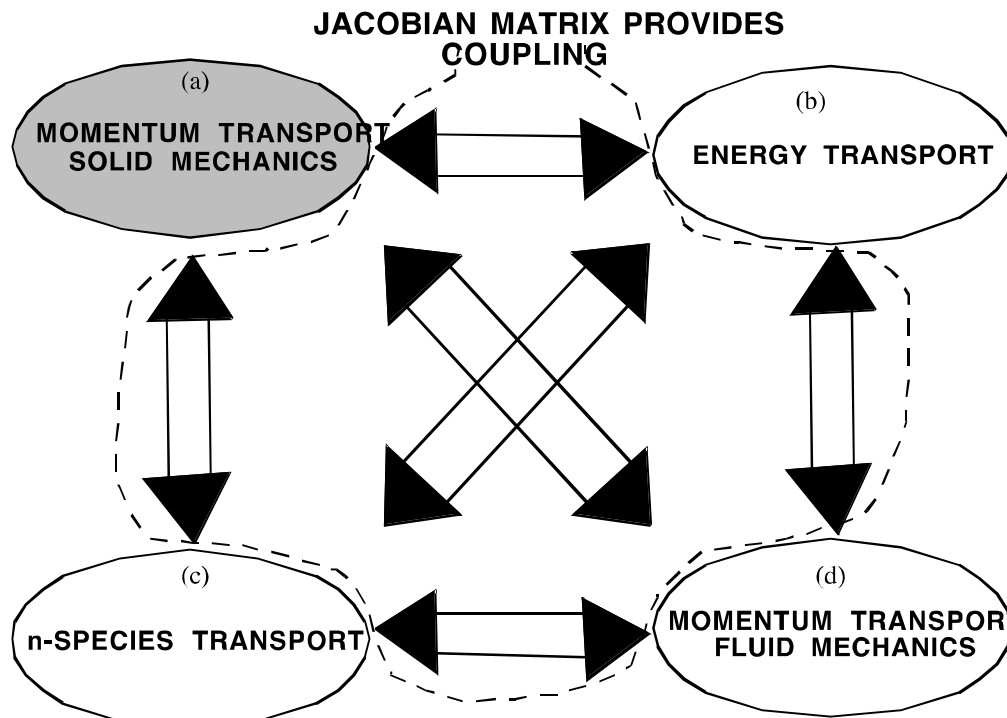
GOMA - BASIC FOUNDATION FOR COUPLED MECHANICS – ALE/LAGRANGIAN

- TREAT MESH EVERYWHERE AS A DEFORMABLE SOLID BODY
- INVOKES LAGRANGIAN AND/OR ALE FORMULATIONS AS REQUIRED BY REGION
- APPLY IMPLICIT DISTINGUISHING CONDITIONS FOR USER-PRESCRIBED, KINEMATIC, OR DYNAMIC BOUNDARY MOTION



GOMA 6.0 - CLOSE, COMPREHENSIVE MECHANICS COUPLING

NEWTON'S
METHOD



*EVERY
MAJOR
BRANCH OF
MECHANICS
CLOSELY
COUPLED!*

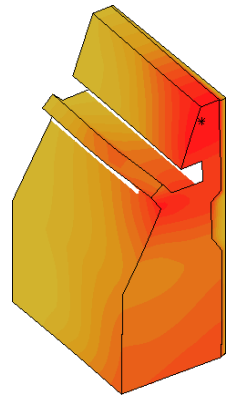
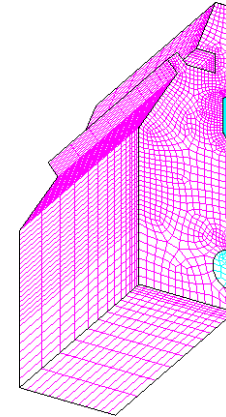
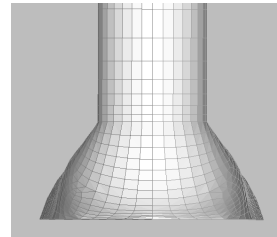
- MINIMAL TUNING REQUIRED OF ALGORITHMS
- FASTER, QUADRATIC CONVERGENCE
- OPTIMAL ALGORITHM FOR VISCOUS AND CAPILLARY-DOMINATED PROBLEMS
- MACHINERY FOR INCORPORATING ADVANCED ALGORITHMS, E.G., AUGMENTING CONDITION CAPABILITY, LINEAR STABILITY, AUTOMATED, HIGHER-ORDER CONTINUATION...

GOMA - HIGHLIGHTS/FEATURES...

MATERIAL MODELS - FLUIDS

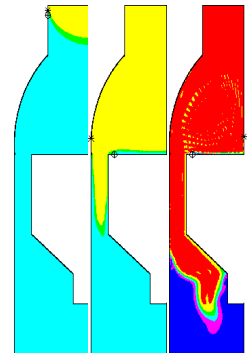
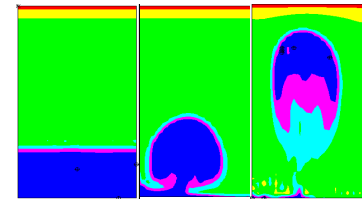
- GENERALIZED NEWTONIAN (CONCENTRATION, TEMPERATURE AND SHEAR-RATE DEPENDENCE). CARREAU, CARREAU-WLF, MOLTEN GLASS, EPOXY, EPOXY CURE, BINGHAM-PLASTIC)

INDUSTRY APPS: EXTRUSION, POLYMER PROCESSING, COATING



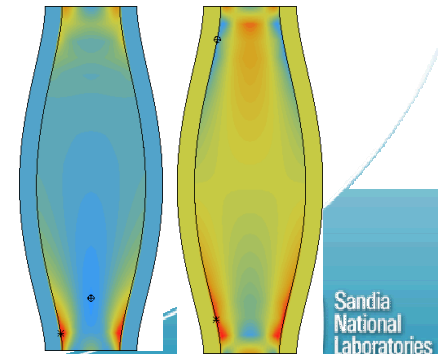
- SUSPENSION BALANCE MODELS (PHILLIPS MODEL FOR PARTICLE CONCENTRATION, KRIEGER FOR VISCOSITY)

INDUSTRY APPS: MULTIPHASE MANUFACTURING FLOWS



- SINGLE OR MULTIMODE VISCOELASTIC WITH EVSS SPLIT STRESS APPROACH

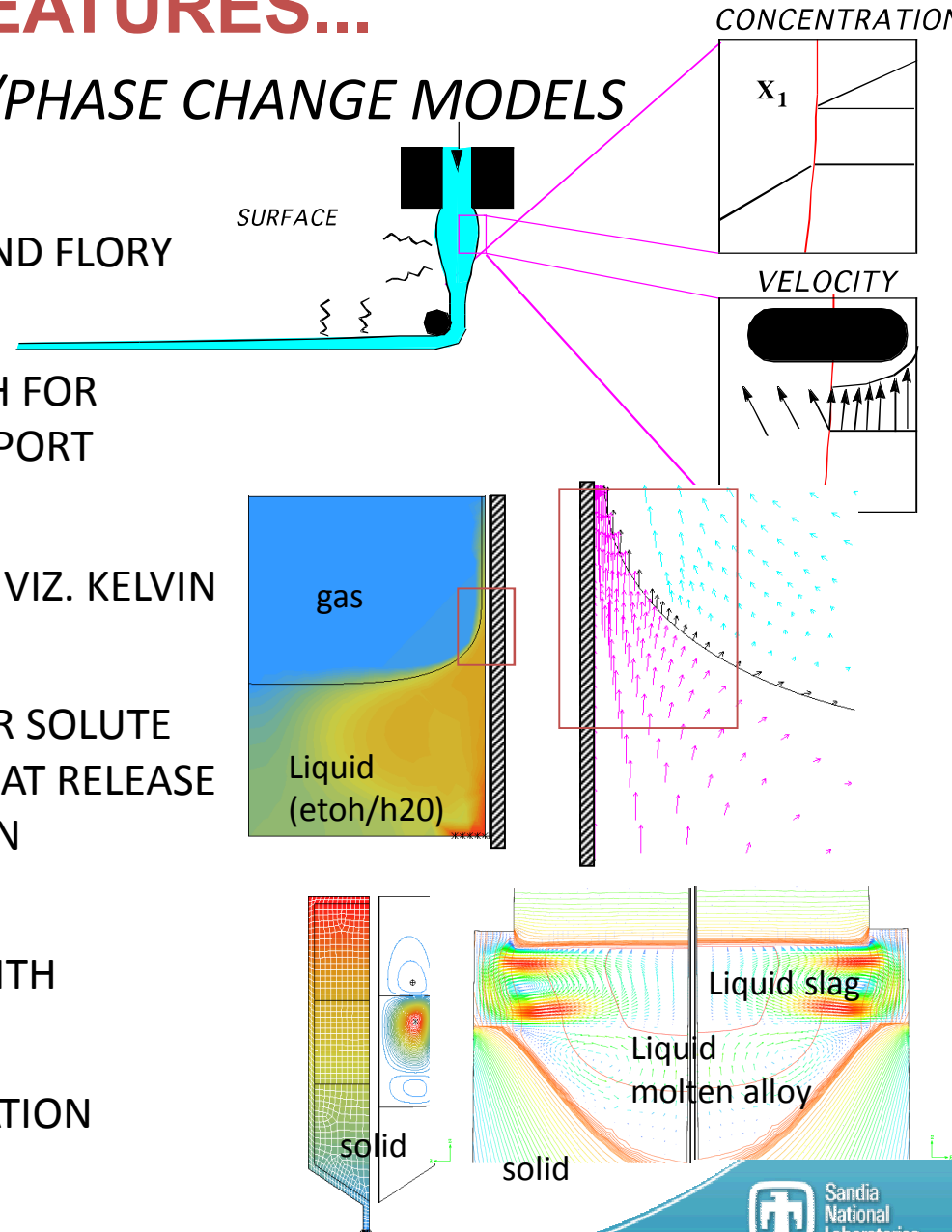
INDUSTRY APPS: EXTRUSION, POLYMER PROCESSING, COATING



GOMA - HIGHLIGHTS/FEATURES...

THERMO-PHYSICAL PROPERTY/PHASE CHANGE MODELS

- VAPOR/LIQUID EQUILIBRIUM - IDEAL AND FLORY HUGGINS
- DISCONTINUOUS VARIABLES APPROACH FOR INTERPHASE MASS-MOMENTUM TRANSPORT (SCHUNK AND RAO, IJNMF 1994)
- VAPOR-PRESSURE VS (T, C, K) MODELS, VIZ. KELVIN EQUATION, RIEDEL, ANTOINE, ETC.
- LIQUID/SOLID EQUILIBRIUM - SCHEIL OR SOLUTE DEPENDENT SOLIDIFICATION (LATENT HEAT RELEASE WITH ENTHALPY OR INTERFACIAL STEPHAN CONDITION)
- LIQUID/SOLID MACROSEGREGATION WITH FLEMINGS-MEHRABIAN MODEL
- POLYMER THERMOSET AND CONDENSATION CURING



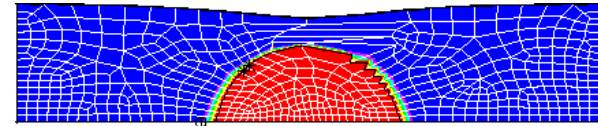
GOMA - ADDITIONAL UNIQUE FEATURES...

FOR DRYING, CURING, ELECTROLYTIC PROCESSES

MATERIAL MODELS - SPECIES TRANSPORT

- FICKIAN OR NON-FICKIAN WITH CONSTANT, USER-DEFINED, OR FREE-VOLUME THEORY DIFFUSIVITIES

POLYMER-SOLVENT, SOLVENT-SOLVENT SYSTEMS, ELECTROCHEMICAL SYSTEMS.



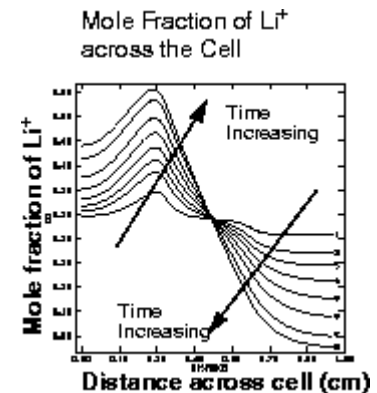
SOLVENT SYSTEM AND GAS BUBBLE

- MULTICOMPONENT DIFFUSION

STEFAN-MAXWELL FORMULATION

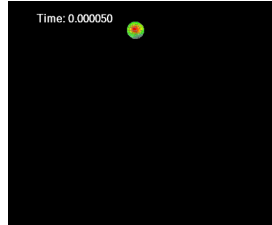
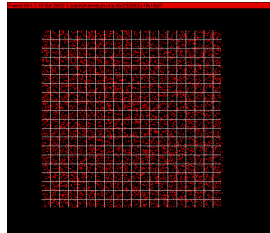
COMPANION ELECTROSTATICS FOR CHARGED SPECIES

- CHEMISTRY: SURFACE CHEMKIN/ LIQUID PHASE CHEMKIN (IN PROGRESS FOR CORROSION AND ELECTROCHEMICAL APPS.)
CONDENSATION CHEMISTRY FOR EPOXIES



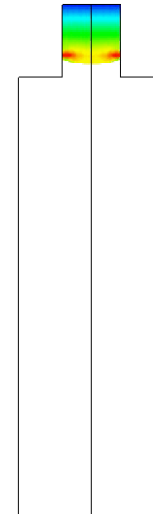
GOMA FREE AND MOVING BOUNDARY TECHNOLOGY: **MECHANICS AND FRAME OF REFERENCE GENERALITY**

Large Kinematic/Small Mechanical



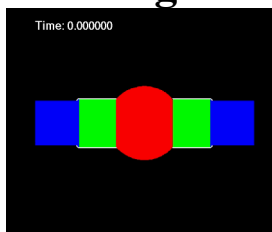
2, 6, 8, 4

**Large Kinematic/
Large Mechanical Fluid**
2, 7



1. ALE SOLID
2. ALE FLUID
3. ALE SOLID & FLUID (TALE)
4. LAGRANGIAN SOLID (DYNAMIC)
5. ALE FLUID/LAGRANGIAN SOLID
6. ***EULERIAN SOLID***
7. EULERIAN FLUID(LEVEL SET)
8. ***EULERIAN SOLID/FLUID***
9. ***EULERIAN FLUID/LAGRANGIAN SOLID (OVERSET GRID)***

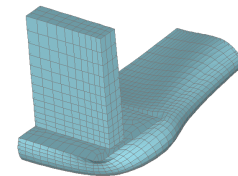
Large Kinematic/Large Mechanical Solid



6, 7, 8

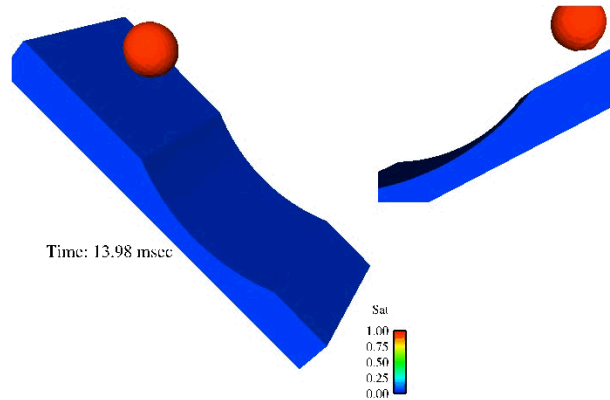
**Small Kinematic/
Large Mechanical**

1, 2, 3, 4

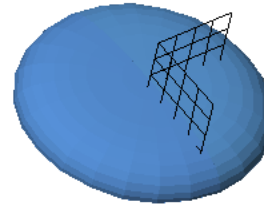


General Free Surface Capability for Continuum and Shell Regions.

Drop Impact on Porous Substrate (Porous, Wetting, 3D free surface)



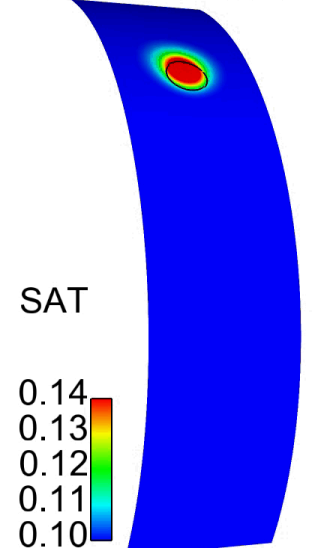
Drop Running Down a Hydrophobic Surface (Wetting, free Surface)



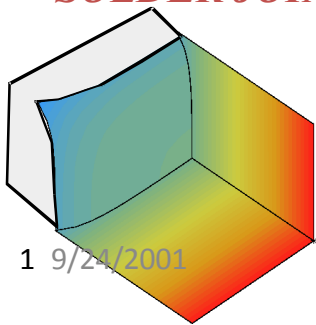
Time: 0.000

Drop Running between a impermeable and porous shell (shell thin region, LS)

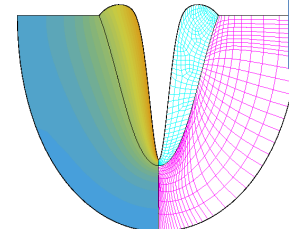
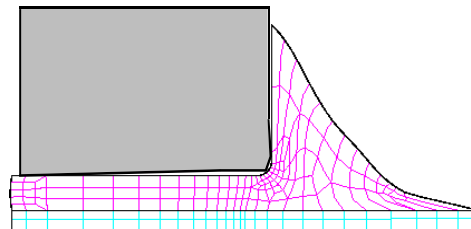
Time = 0.001898 s



SOLDER JOINTS



LEADLESS CHIP SOLDER JOINTS



LASER WELDING

GOMA 6.0 - GENERAL FEM/SOLVER FEATURES...

FINITE ELEMENT INFRASTRUCTURE/SOLVER TECHNOLOGY

- 4/9 NODE QUADS, 9/27 NODE HEXES (MIXED Q2/P1 OR NO CONSTRAINTS ON Q2, Q1, OR DISCONTINUOUS ON ANY DOF). TRI-3, TET-4, SHELL-4, SHELL-9 PRESSURE STABILIZED SCHEMES, MASS LUMPING.
- FULLY INTEGRATED ELEMENTS - GAUSSIAN QUADRATURE
- STEADY/TRANSIENT (1ST OR 2ND ORDER, NEWMARK-BETA)
- NEWTON'S AND RELAXED NEWTON'S METHOD, MODIFIED NEWTON
- DIRECT (SPARSE, UMF, FRONT, SUPERLU_DIST), ITERATIVE (**TRILINOS 10.2**) SOLVERS
- DISCONTINUOUS GALERKIN FOR STRESS, SPECIES, ETC.
- LBB ELEMENTS DEFAULT, PSPG/SUPG OPTIONS AVAILABLE
- DECOUPLED MARCHING LOOP FOR HYPERBOLIC EQUATIONS
- ANALYTICAL JACOBIAN FOR ALL BUT EVP AND AUGMENTING CONDITIONS
- GENERALIZED COORDINATE SYSTEMS (2D, CYLINDRICAL, SWIRLING, SPHERICAL, 3D)
- ~100 DIFFERENT DIFF EQS, ~200 DIFFERENT BOUNDARY CONDITIONS
- HIGHER-ORDER QUANTITY POST-CALC., INTEGRATED FLUX OUTPUT, ...
- EXTENSION SHELL-ELEMENT AND REDUCED ORDER ELEMENT TECHNOLOGY (LUBRICATION, STRUCTURAL, SPECIES, HEAT-TRANSFER)
- FULLY PARALLEL PASS-OFF TIME

GOMA - ADDITIONAL UNIQUE FEATURES...

ADVANCED ANALYSIS CAPABILITIES

- AUGMENTING CONDITIONS (E.G. VOLUME & MESH CONSTRAINTS, OPTIMIZATION)

BORDERED ALGORITHM, NUMERICAL & ANALYTICAL JACOBIAN

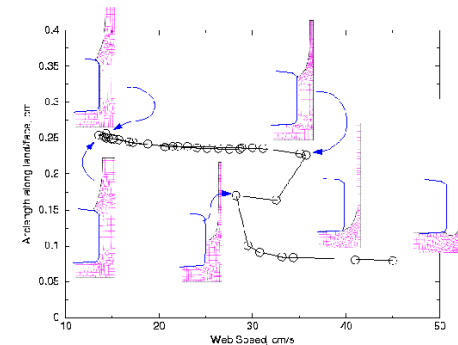
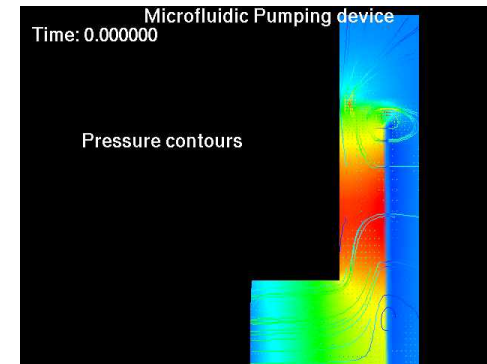
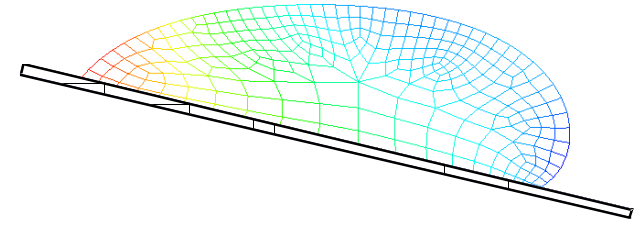
- AUTOMATED ZEROth, FIRST, ARCLength AND MULTIPARAMETER CONTINUATION

NONLINEAR PARAMETER OPERATING SPACE PREDICTION FOR MANUFACTURING

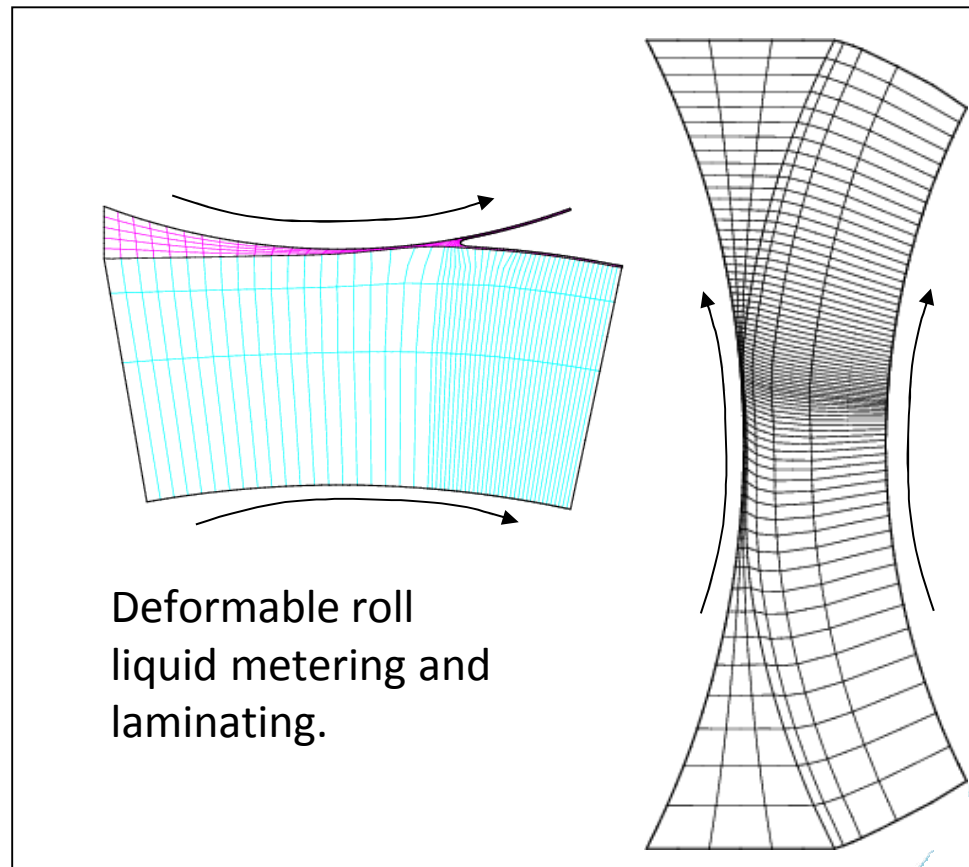
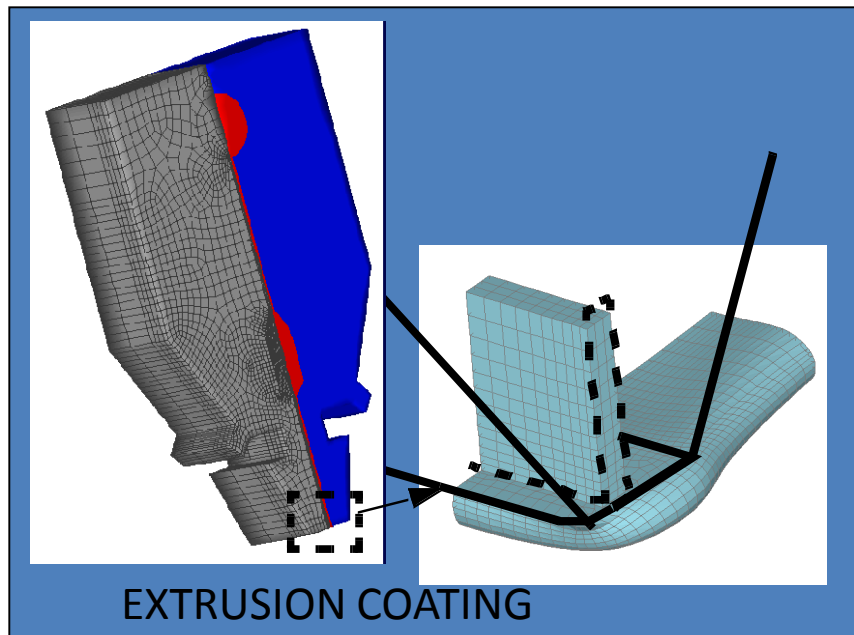
- LINEAR STABILITY ANALYSIS USING (ARPACK AND ANAZAZI)

2D AND 3D LINEAR STABILITY OF DYNAMIC SYSTEMS. 3D STABILITY OF 2D BASE FLOW.

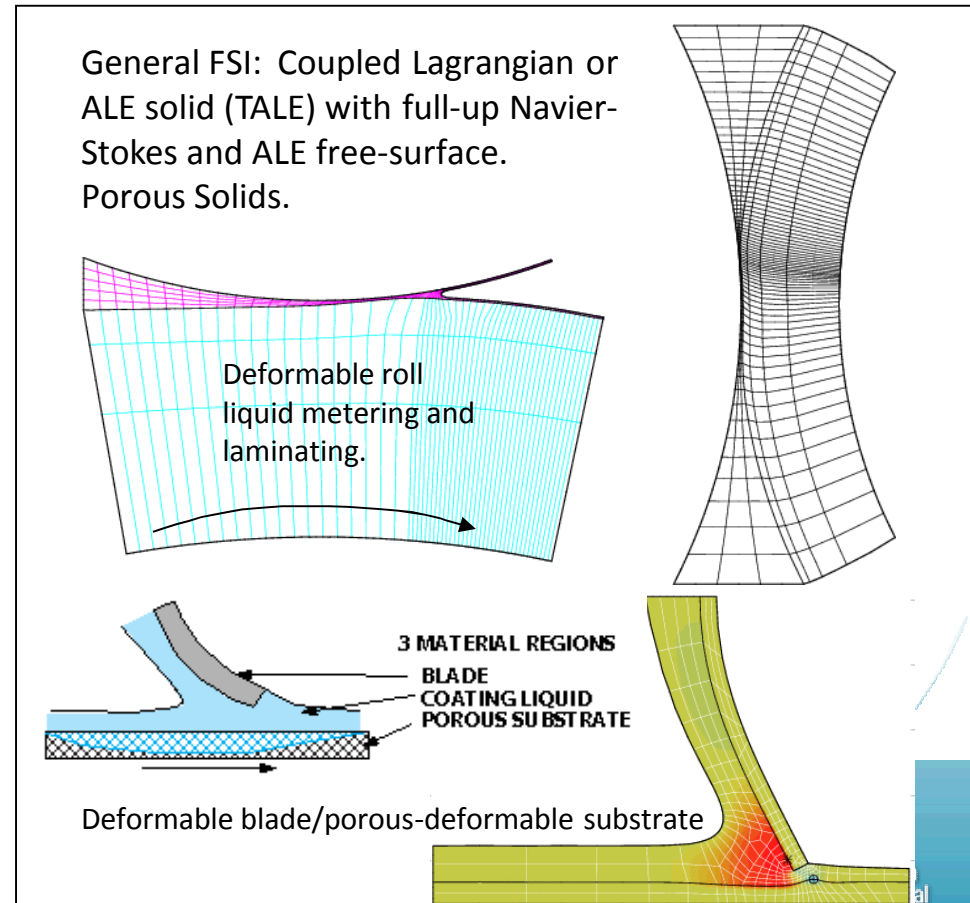
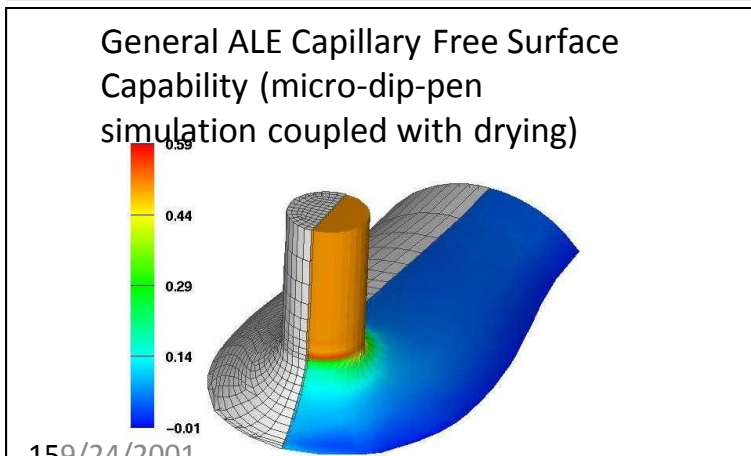
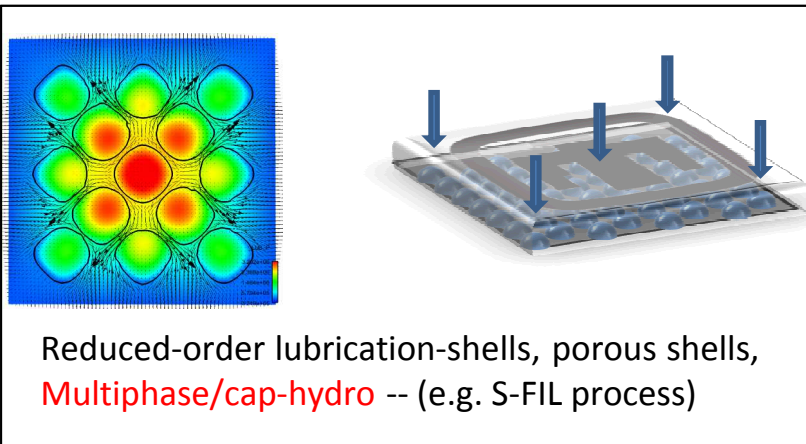
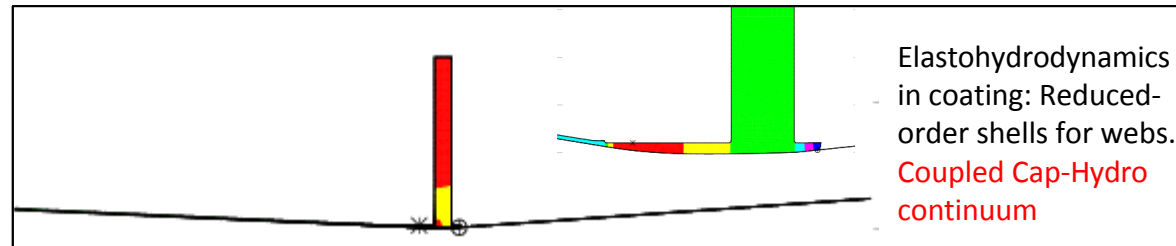
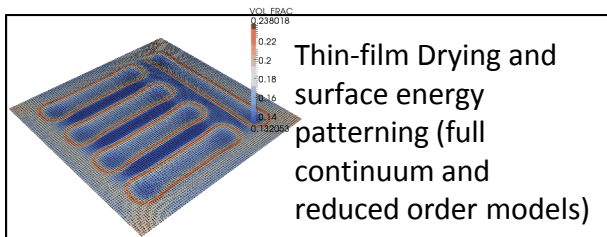
SUPPORT OF THESE IS “HIGH MAINTENANCE” AND REQUIRES GOOD INTERFACE FOR USER TO DEFINE CONDITIONS



THIN-CONTINUOUS LIQUID FILM COATINGS AND STRUCTURES



Current State-of-the-Art Capabilities: Thin film manufacturing flows.

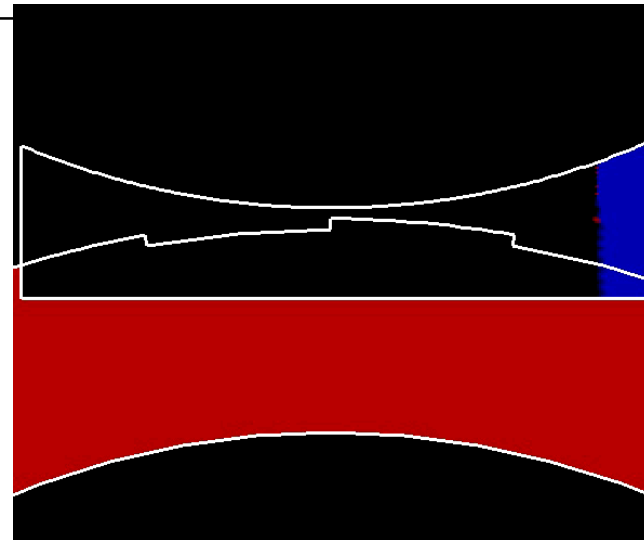
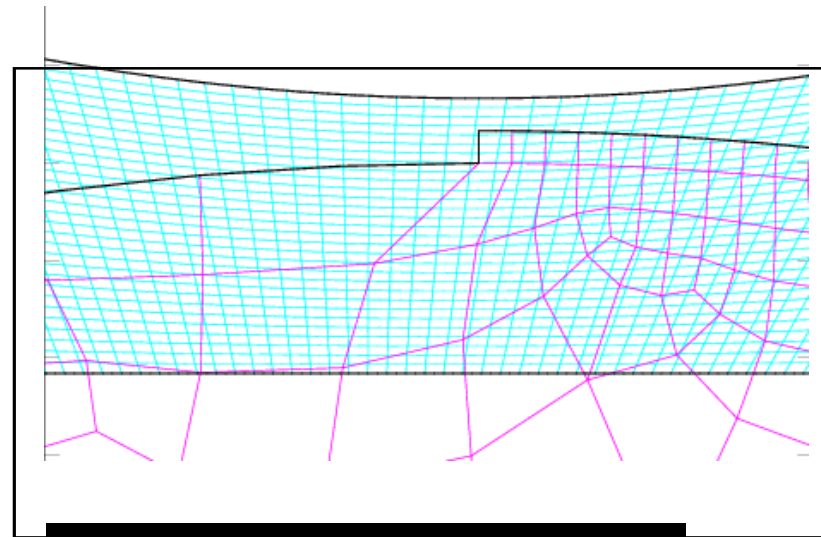
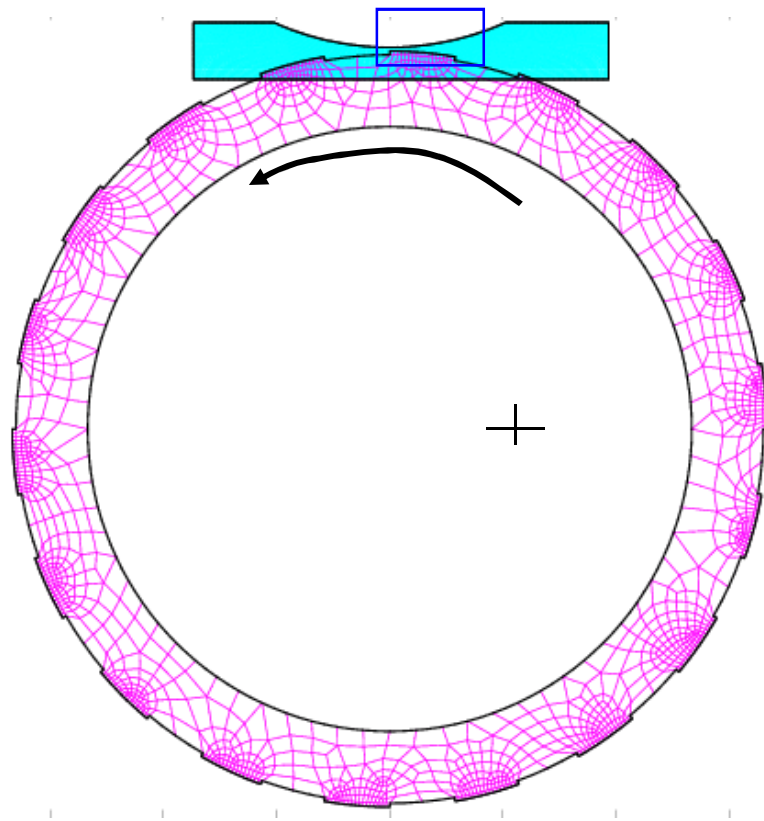


Gravure Roll Coating (Overlap Grid Method – 2D only)

Viscosity – 10 P

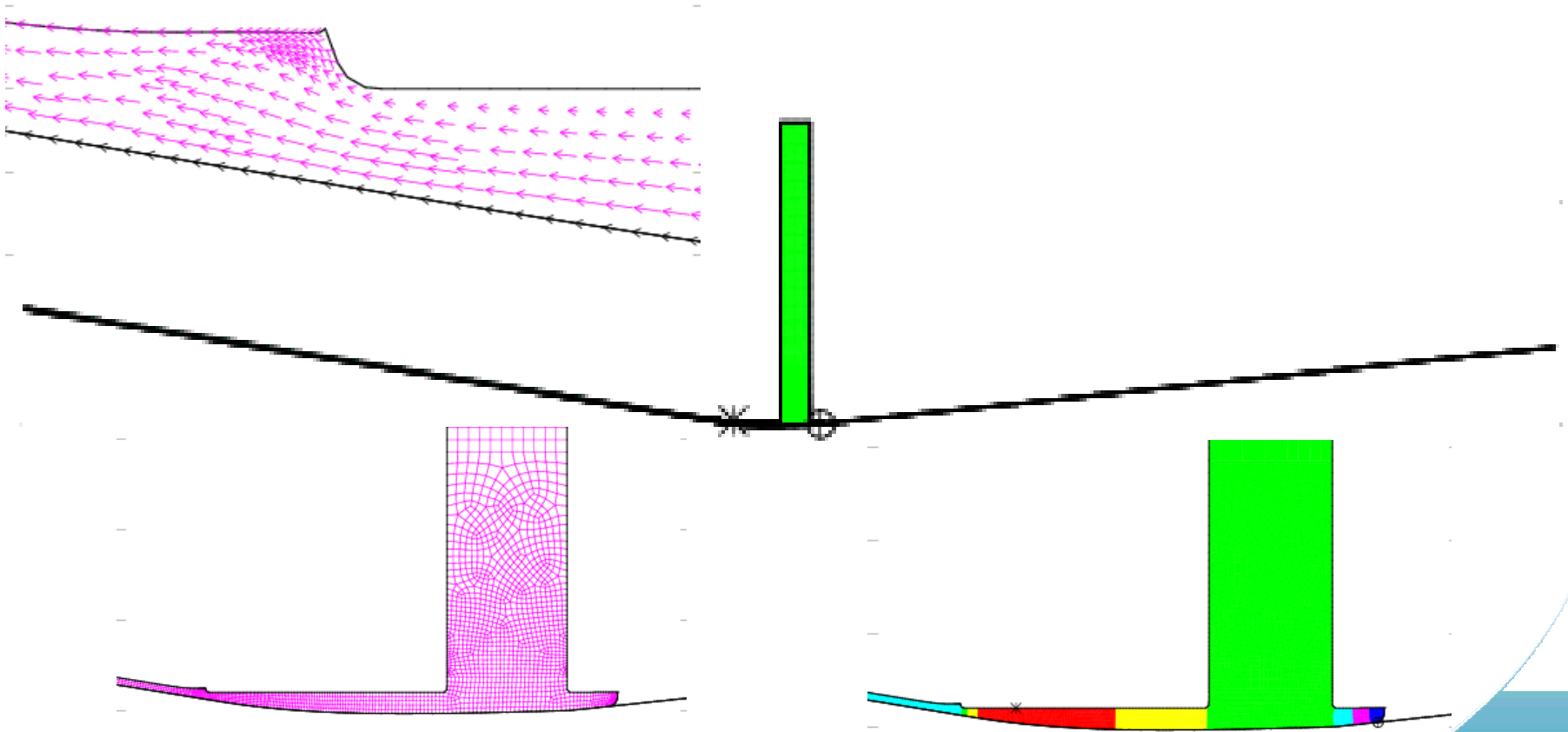
Roll Speed – 100 cm/s (ID)

Density – 1 gm/cm³

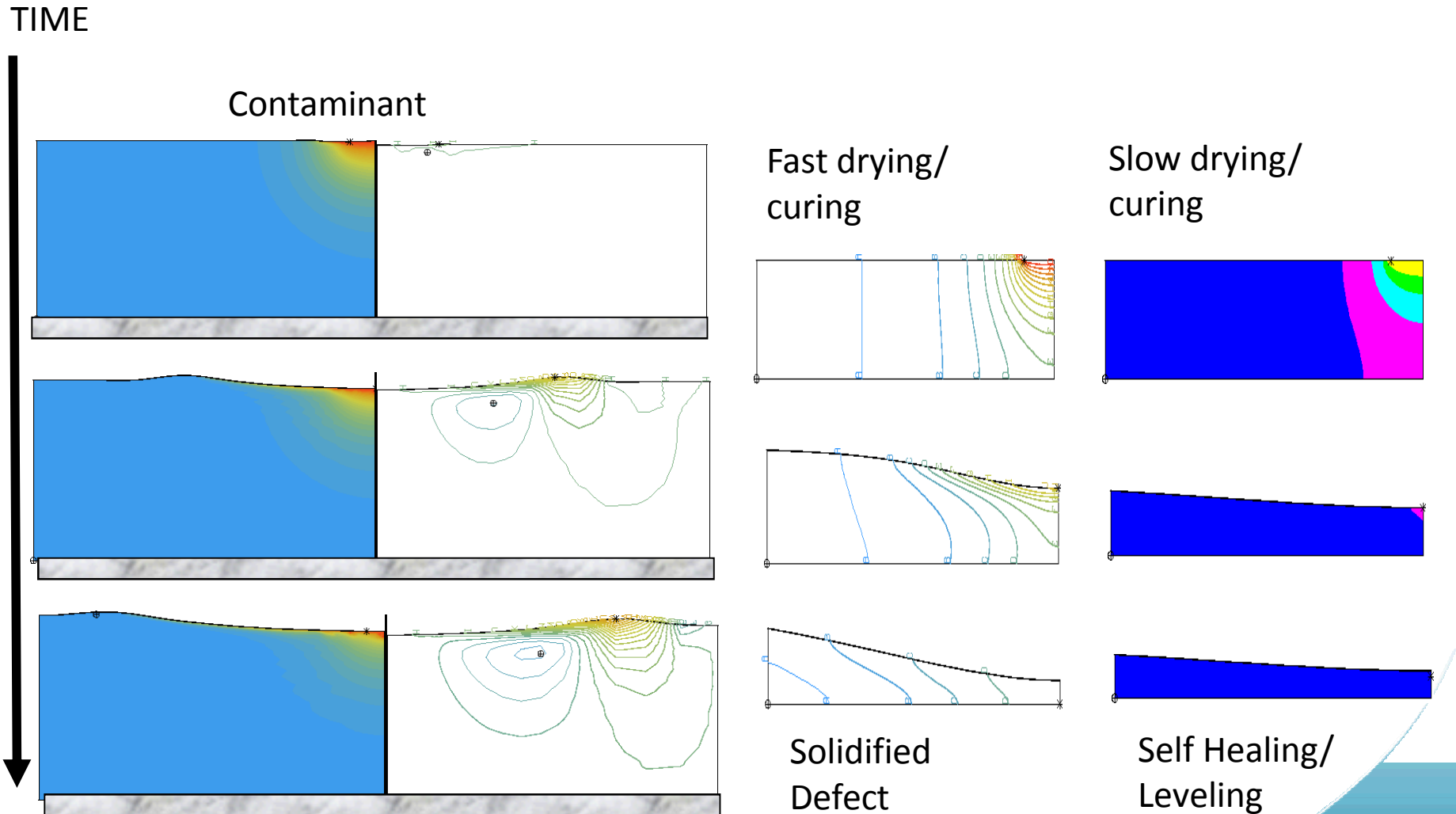


Tensioned-Web Slot Coating

Viscosity = 2 g/mm-s; Web_tension = 1.e8 Web_angle_U = 6 deg
Web_angle_D = 10.7, Webspeed = 1 m/s, ST = 60 dyn/cm



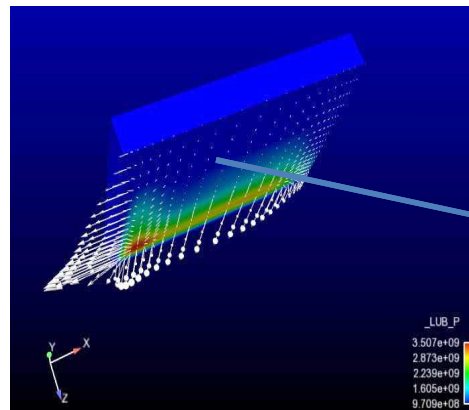
DRYING AND CURING OF THIN FILMS



Finite Elements and thin regions calls for Shell Elements!

- Shell Element Technology Ideal when large-aspect-ratio regions (structures) prevail.
 - Shell-Element: reduced-order continuum element (integrated with presumed mechanical response in one direction – membrane, inextensible shell, lubrication, porous) – *Three dimensional coordinates but only two integration coordinates*
 - We have developed and integrated true curvilinear shell capability for *lubrication* (first of its kind to our knowledge integrated with continuum codes), *porous penetration*, and *integrated structure*.

Lubricated
Slider Bearing,
Melt Lubrication

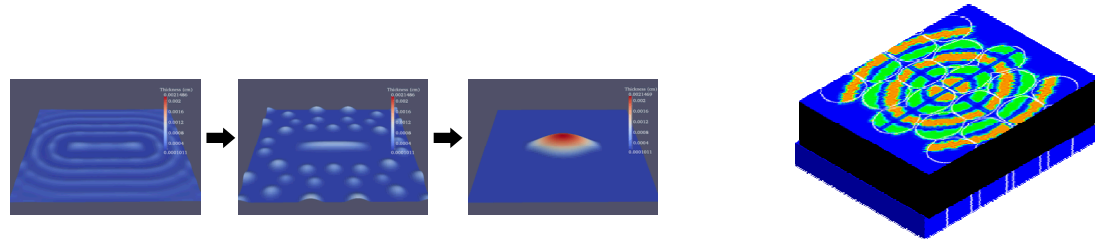


Layer thickness < 5
microns, slider
dimension ~10 cm

“Shell elements are also thought of as a way (data-structure, mechanism) to apply overloaded, fancy BCs”

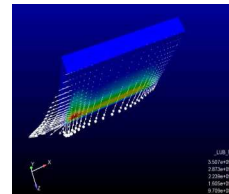
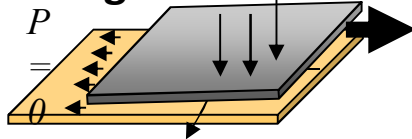
Motivation is Application Driven

Top-down nano-manufacturing: fluid distribution, printing, mold filling in large-aspect ratio regions



Thin-liquid film coating: film flow, metering flows, thin metering structures

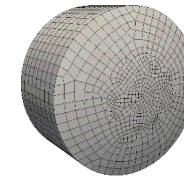
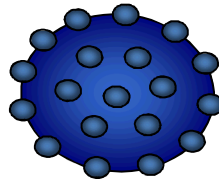
Sliding Contacts: electrical brush



Tensioned web Slot



Capillary surface microstructure, surface rheology: emulsions, surface rheometry, oil recovery



Miscellaneous: surface microprobes (Moore et al., "Hydrophilicity and the Viscosity of Interfacial Water", submitted to Langmuir), *tire hydro-plane* etc.

GOMA 6.0: DOCUMENTATION PROJECT

TRAINING, VERIFICATION, VALIDATION, ADVANCED USE

- GOMA 6.0 USER'S MANUAL – **Unlimited release**
- GOMA SUPPLEMENTAL MANUAL FOR ADVANCED TOOLS (Automated Continuation, Stability, Augmenting conditions)
- MEMOS/TUTORIALS/RELATED DOCUMENTATION - 3 VOLUMES, ~1000 PAGES
 - GT-001.pdf – *Introduction and Beginner's Training* – **Unlimited release**
 - GT-002 -> GT-043 – *Various and sundry tutorials and training templates covering many examples including: Premetered coating flows, roll coating flows, viscoelasticity, parallel processing, drying and solidification, overset grid method, and much more...*
- DEVELOPERS' MANUAL ~200 PAGES
- Technical memos (validation studies, etc.) – 20-30. C

PATTERN REPRESENTATION

COARSE – GRAINING METHOD

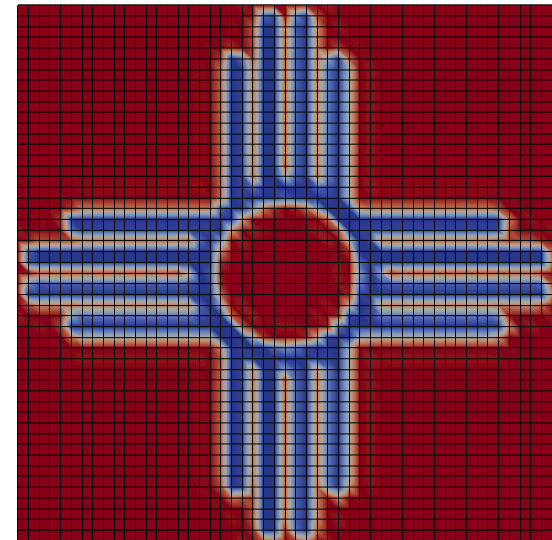
ORIGINAL PATTERN IMAGE



IMAGE PROCESSING
+
LEAST SQUARES FIT TO
MESH



PATTERN OVERLAID MESH



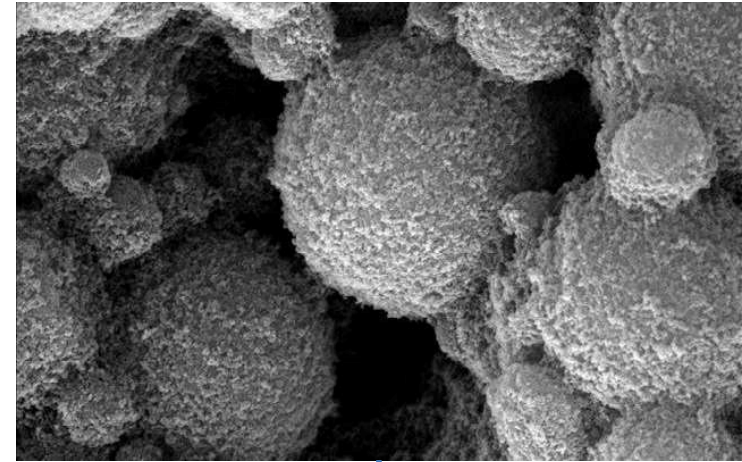
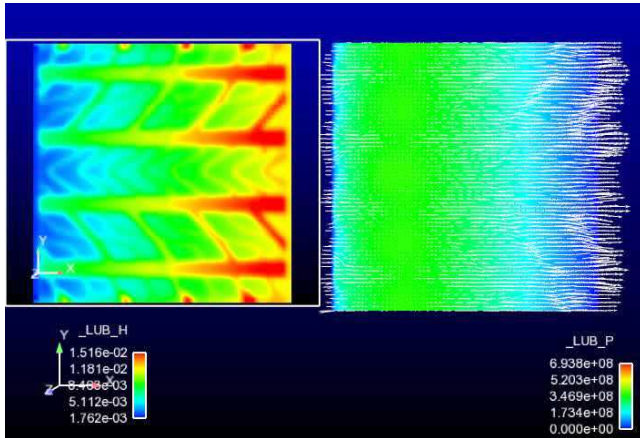
THETA
160
120
80
40
10

➤ **NO NEED TO GRID THE PATTERN INTO THE MESH → REDUCE MESH REQUIREMENTS TO RESOLVE THE PATTERN**

➤ **CAN BE GENERALIZED TO OTHER FIELD PARAMETERS SUCH AS PORES HEIGHT, PILLAR HEIGHT, ...**

Examples: Application of Pattern-to-Mesh Tool:

Rolling tire hydroplaning, Microstructure/property calculation



DEM-To Background Structured Mesh

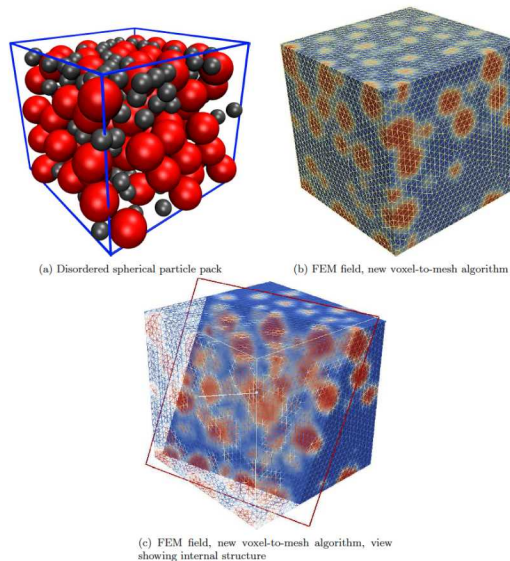
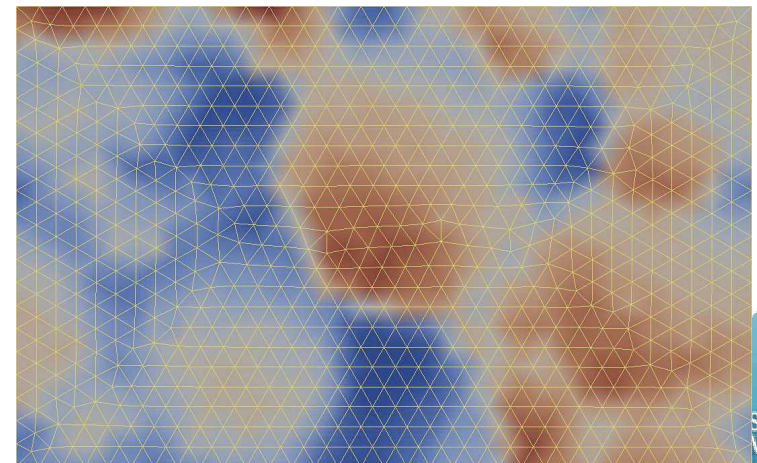


Figure 2: 3-D pixel-to-mesh capability
BB

Tomographic Data-To-Mesh



GOMA 6.0 Wrap-Up and Outlook

- **GOMA 6.0 released under the GNU public license**
- **Third party library requirements: Trilinos 10.0 or higher, Sparse 1.3, SEAMS, other.**
- **State-of-the-Art Mod/Sim technology for a variety of manufacturing processes (liquid-based with solidification) exists within Sandia (GOMA)**
- **Support and training available**

INFRASTRUCTURE STATUS—GOMA 6.0

ONGOING TRANSLATOR DEVELOPMENT

Post Processing

- PARAVIEW (available freely on web)
- ENSIGHT
- SEAMS and SEACAS
- Tecplot ? (translator available)

Pre-Processing

- ANSYS Workbench
- MSC Software-PATRAN (PATEXO)
- CSIMSOFT - CUBIT/Trelis (C
- I-DEAS ?? Bought out by someone.
- SOLIDWORKS/PRO-E geometries. Read these into CUBIT/Trelis

Platforms

LINUX/UNIX (Preferred flavor RedHat 6.0) –