

Accelerometer structure

9/13/2010

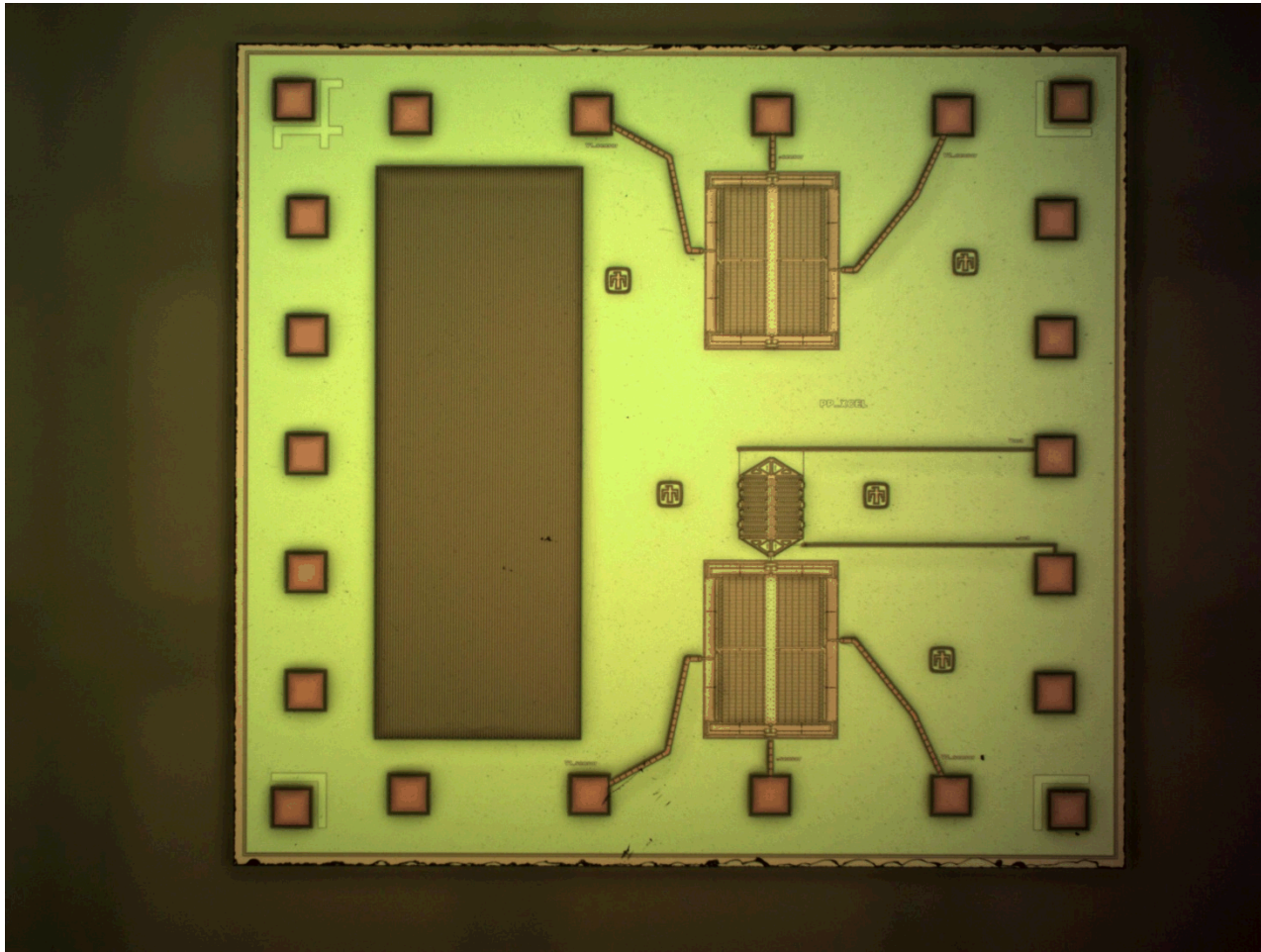
Anton Filatov



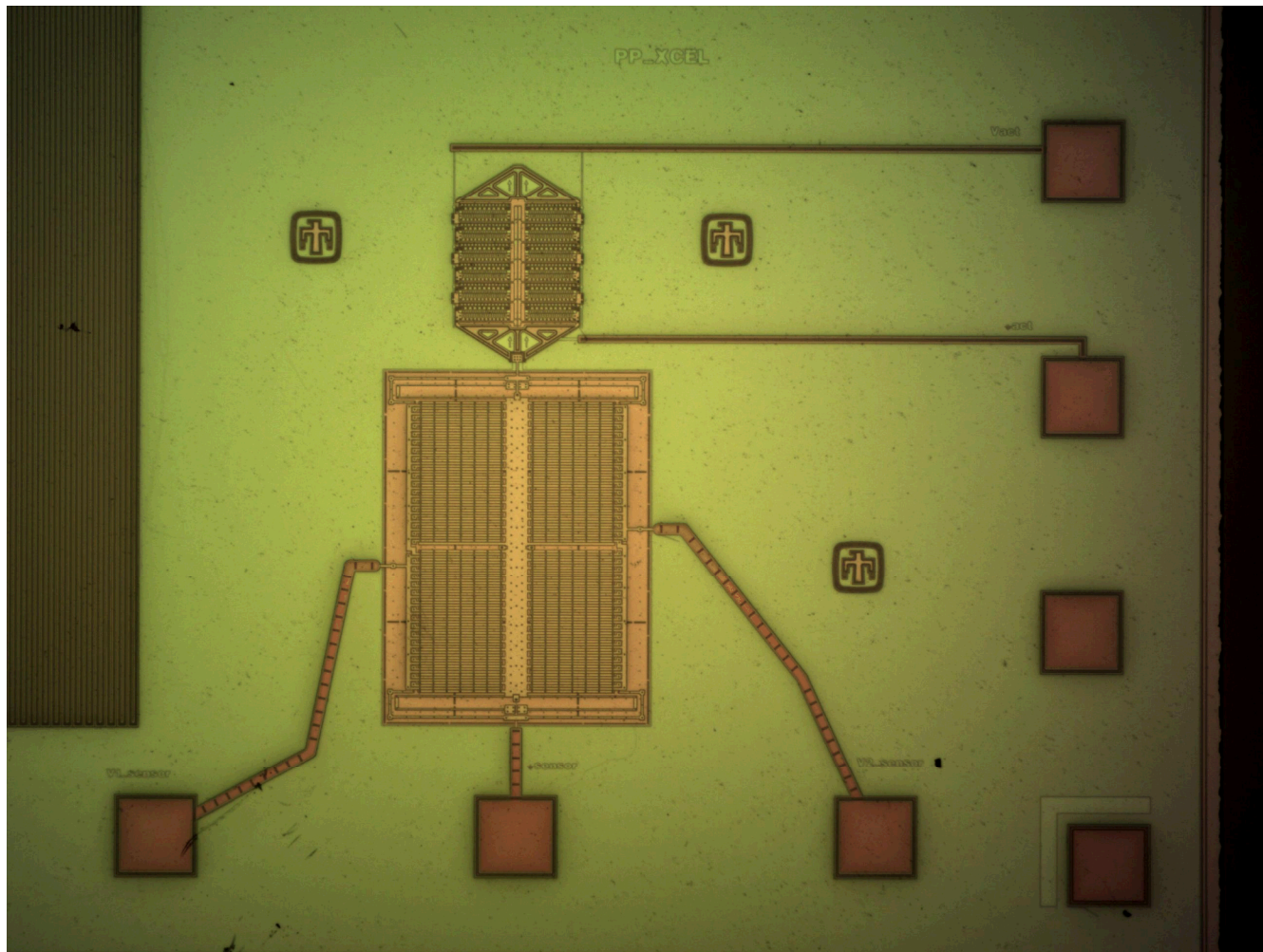
Accelerometers

- **Two kinds of devices**
 - Parallel plate
 - Comb finger
- **Each die has**
 - Accelerometer
 - Accelerometer w/ attached actuator
- **Actuator is a comb finger design (electrostatic)**
- **Whole die is ~3mm x 3mm**
 - Stand by for more precise dimensions of individual features

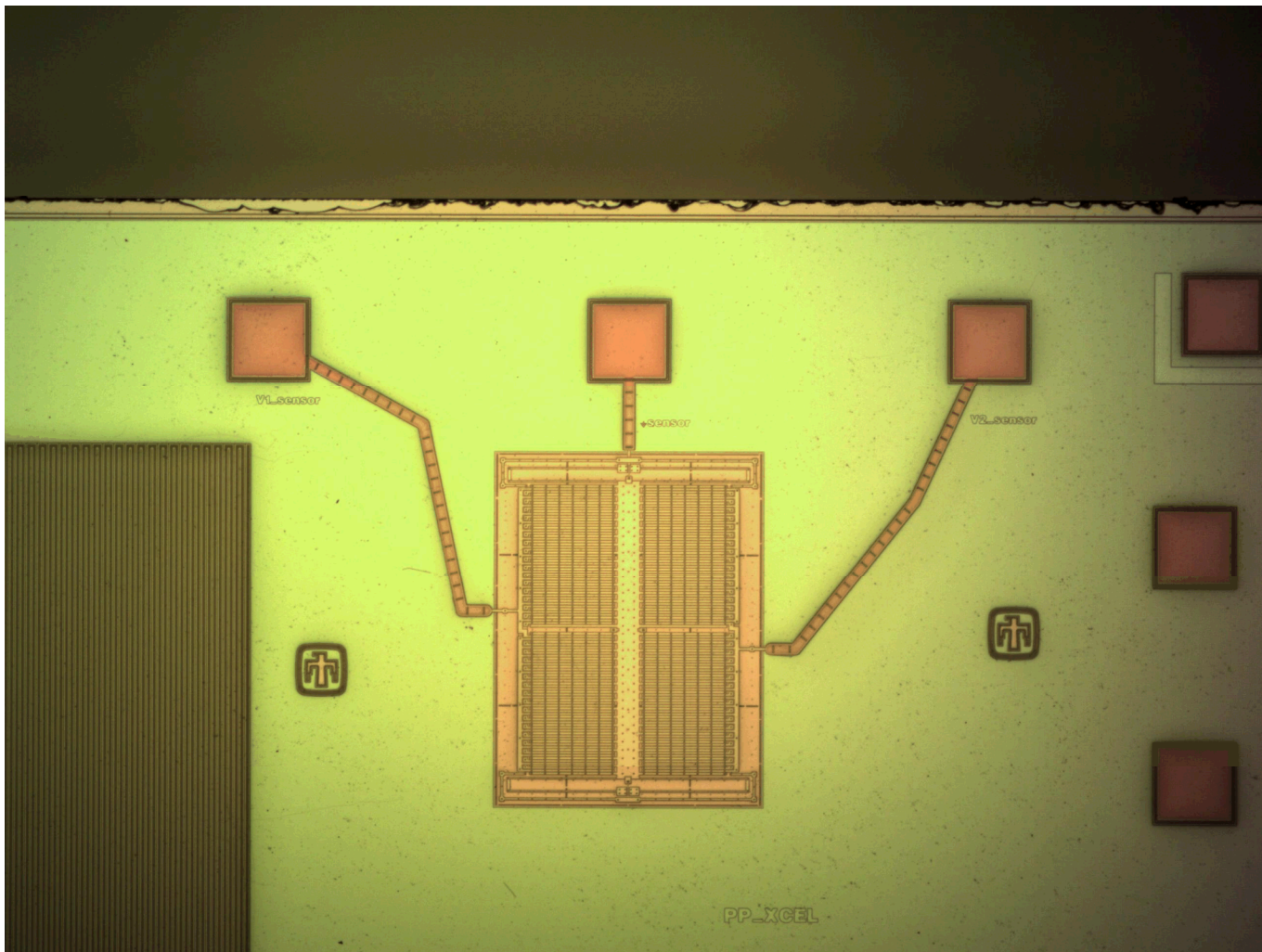
Parallel Plate Accelerometer Die



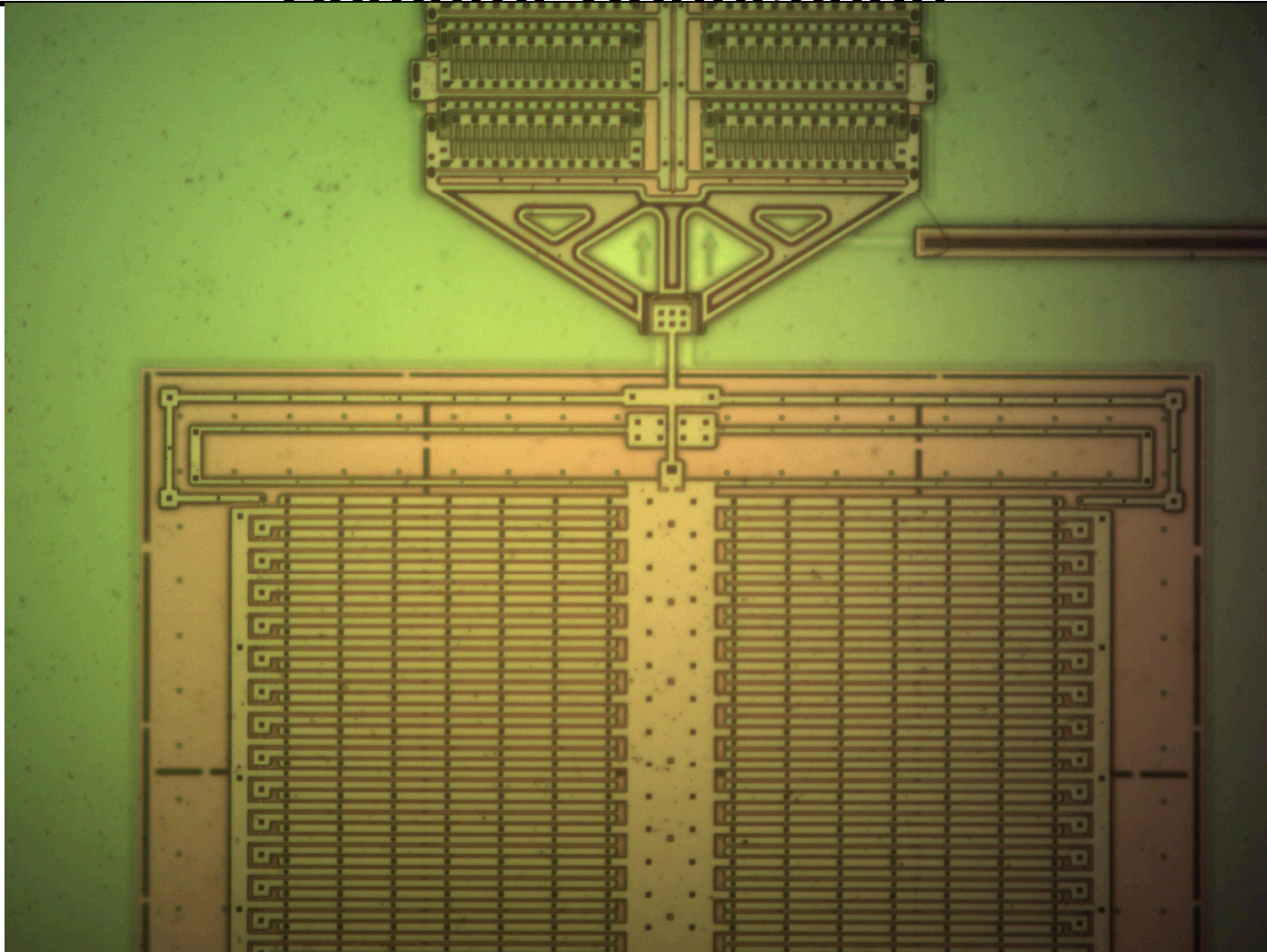
Parallel Plate Accelerometer w/ Actuator



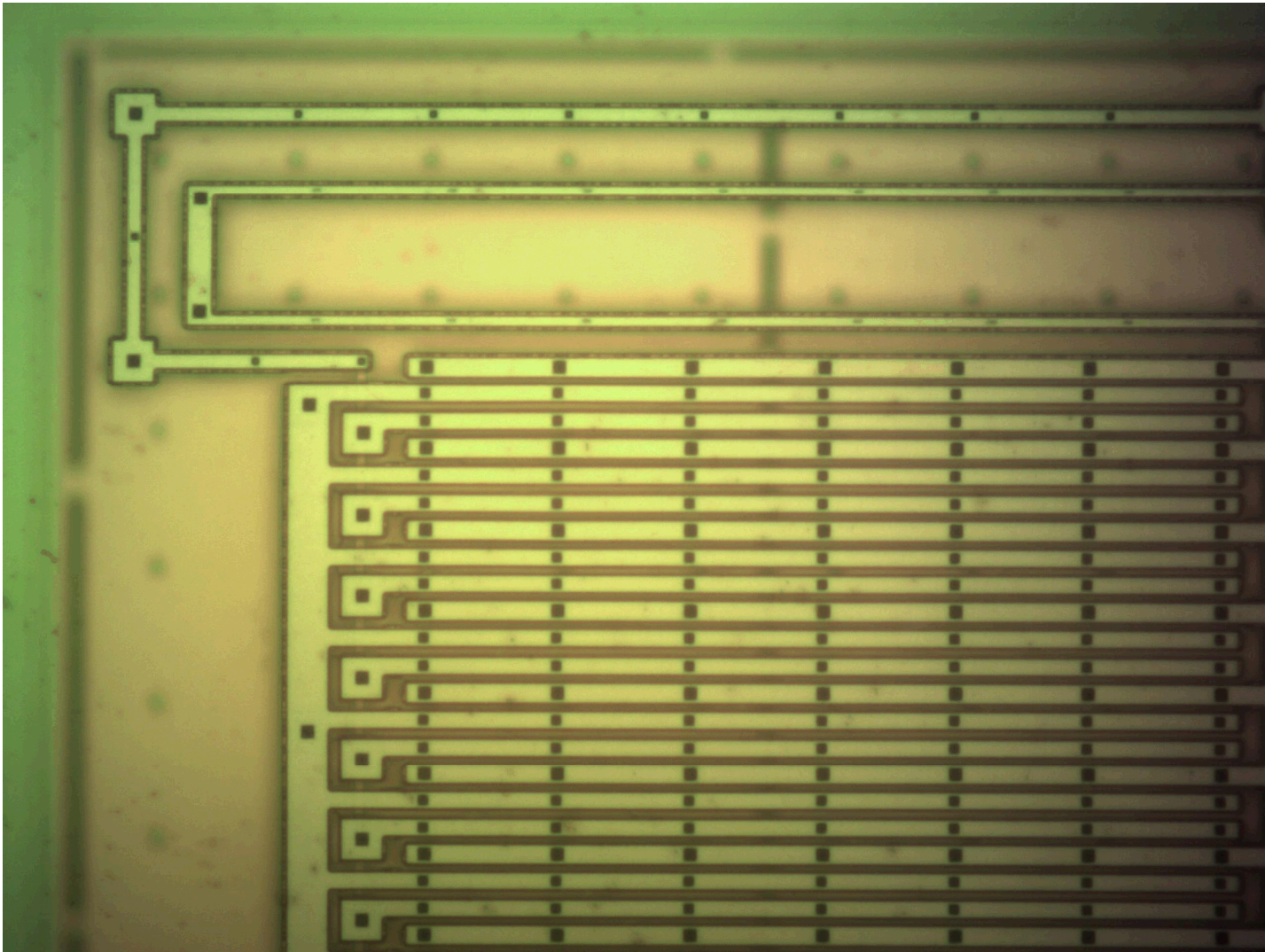
Parallel Plate Accelerometer, w/o Actuator



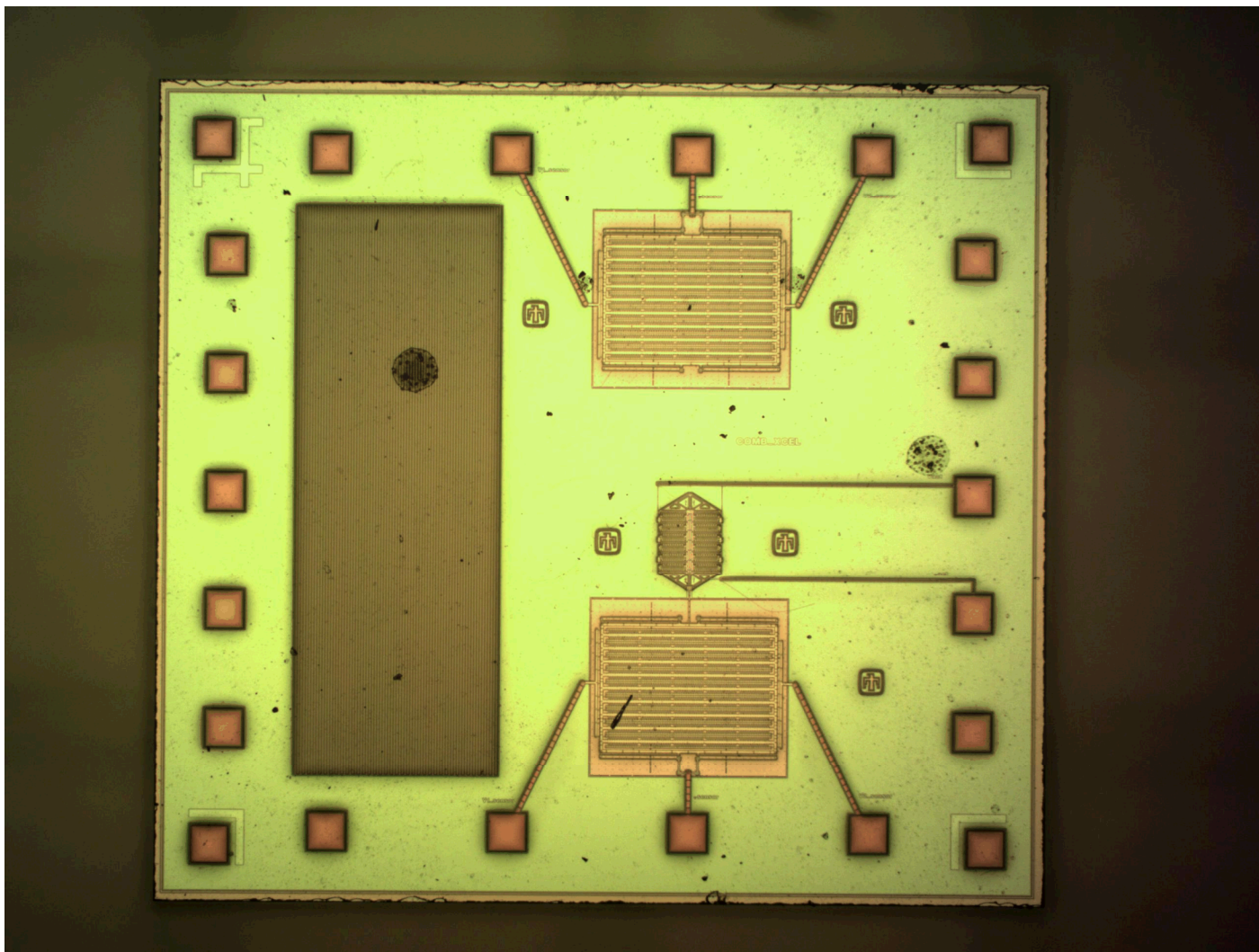
Parallel Plate Accelerometer, Detail of Actuator Connection



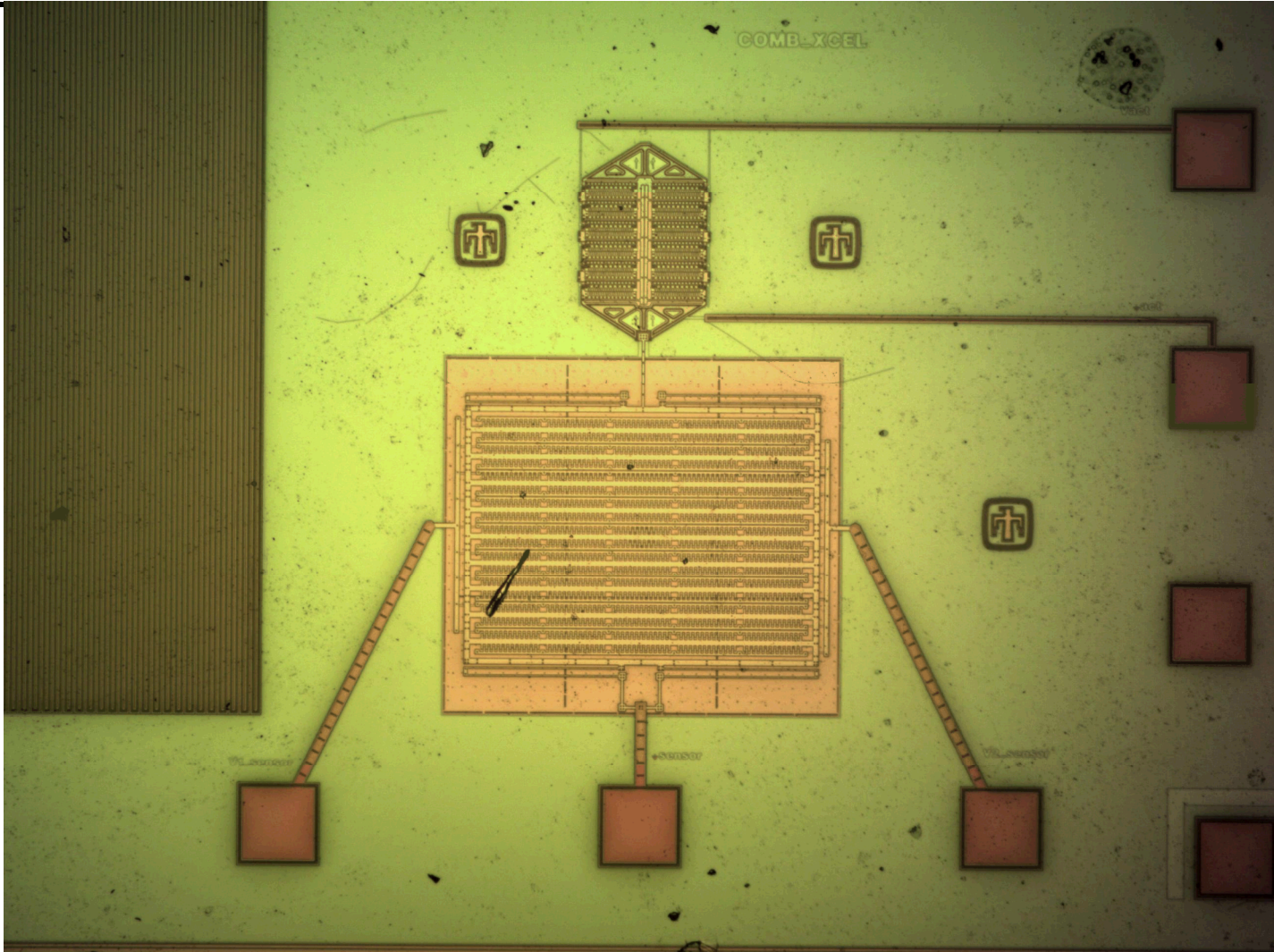
Parallel Plate Accelerometer, Detail of Sensor



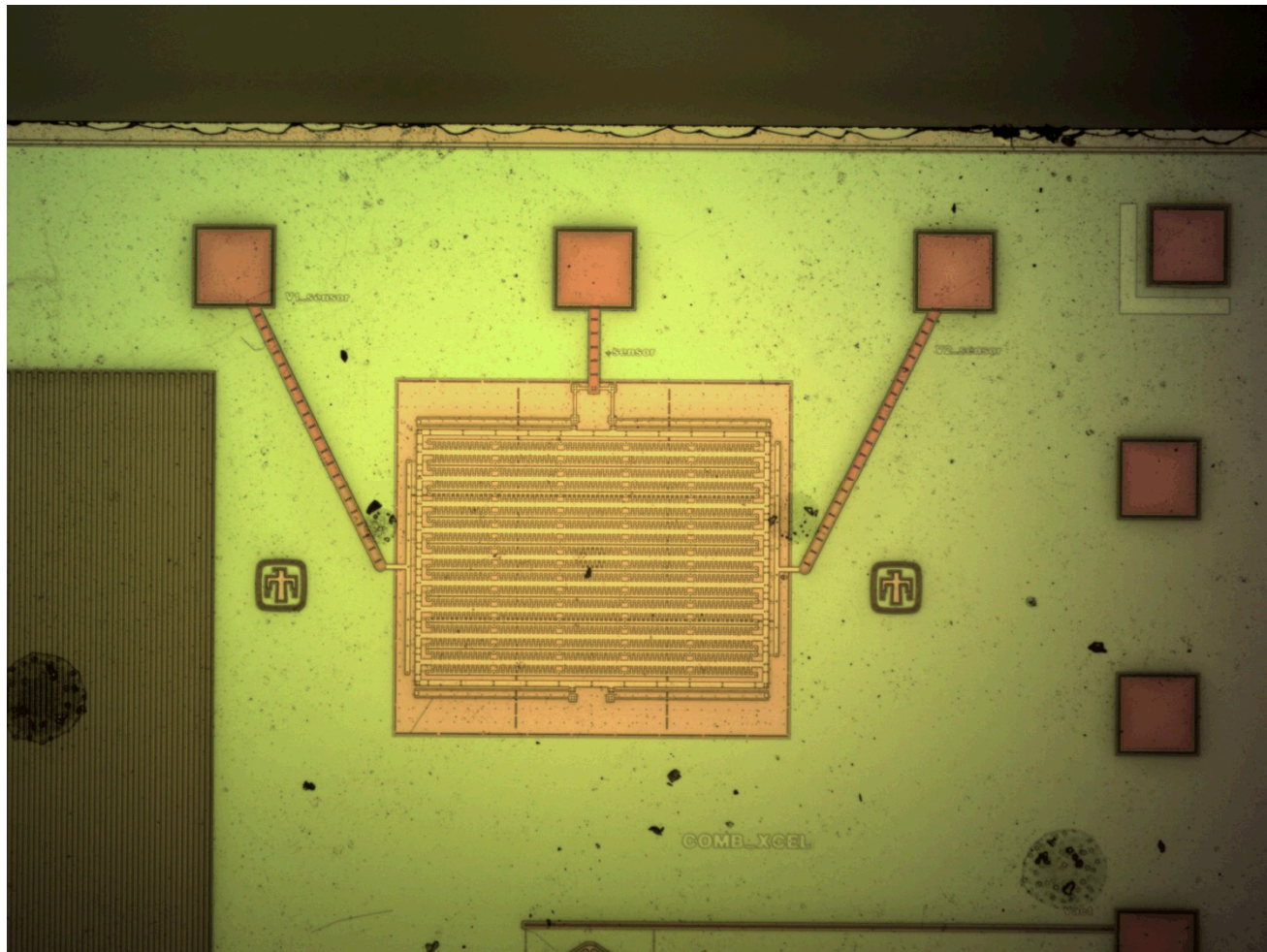
Comb Finger Accelerometer Die



Comb Finger Accelerometer w/ Actuator



Comb Finger Accelerometer, w/o Actuator



Comb Finger Accelerometer, Detail of Sensor

