

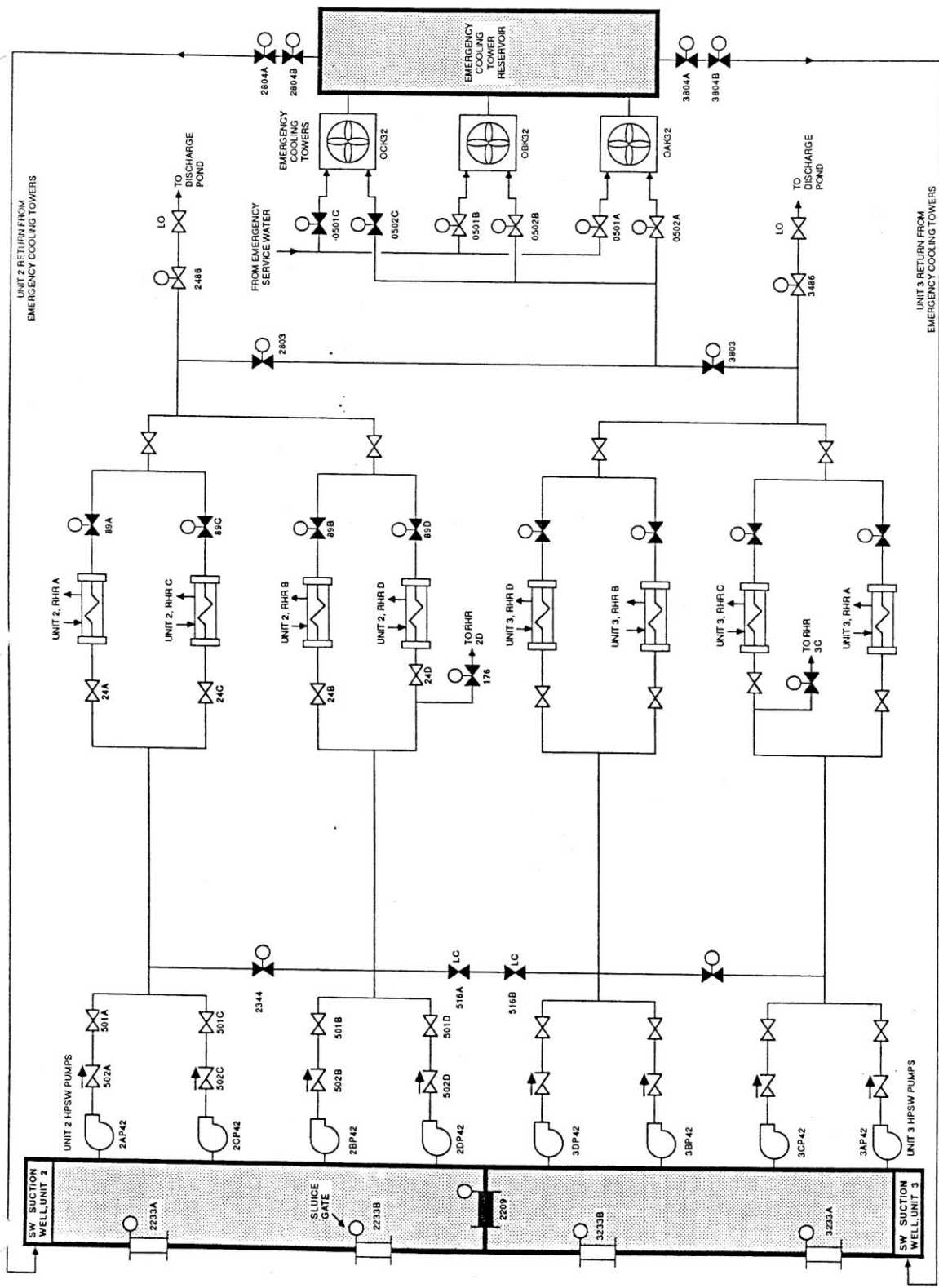
## **EXAMPLES OF P&ID AND LOCATIONS\***

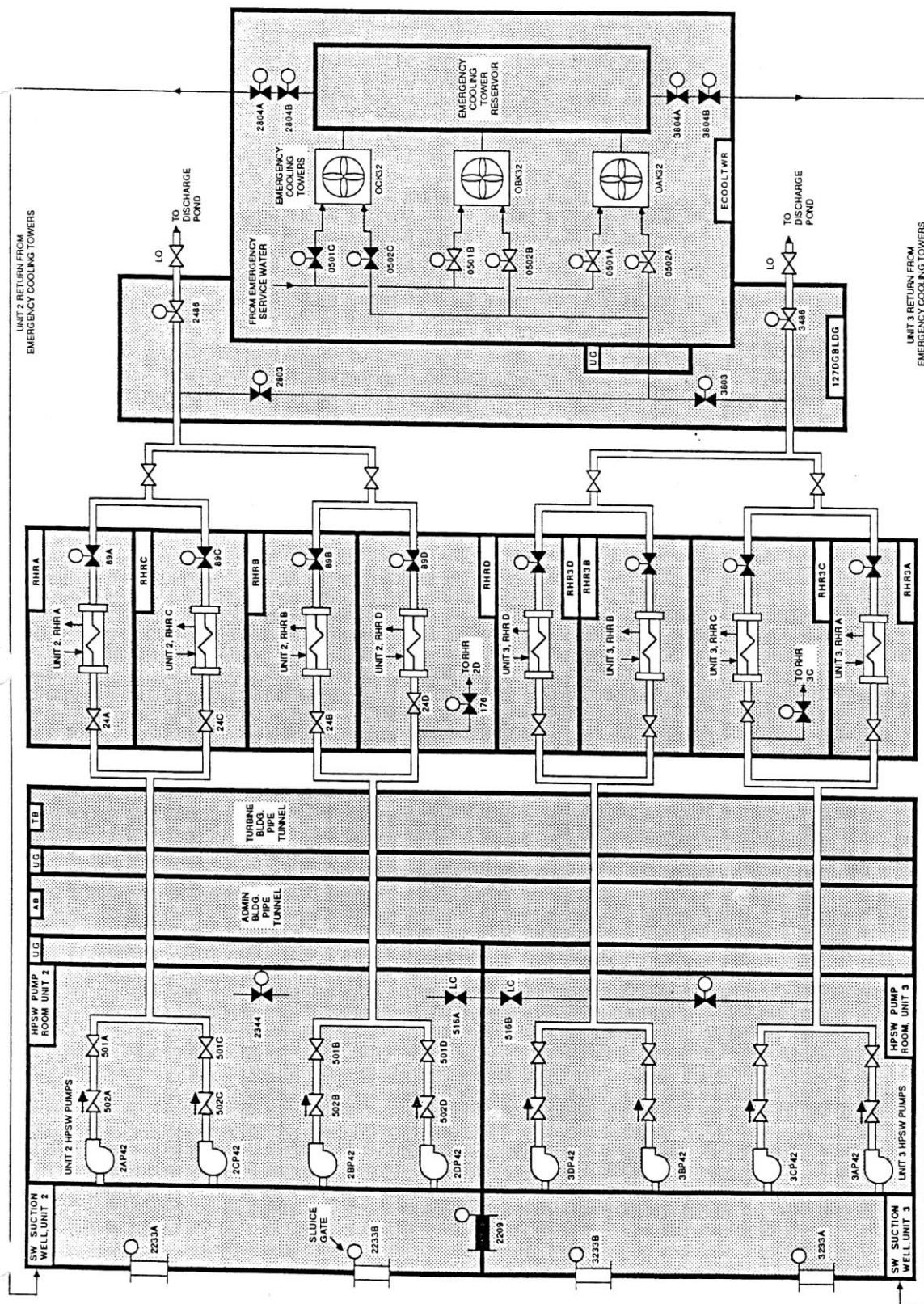
Four examples include:

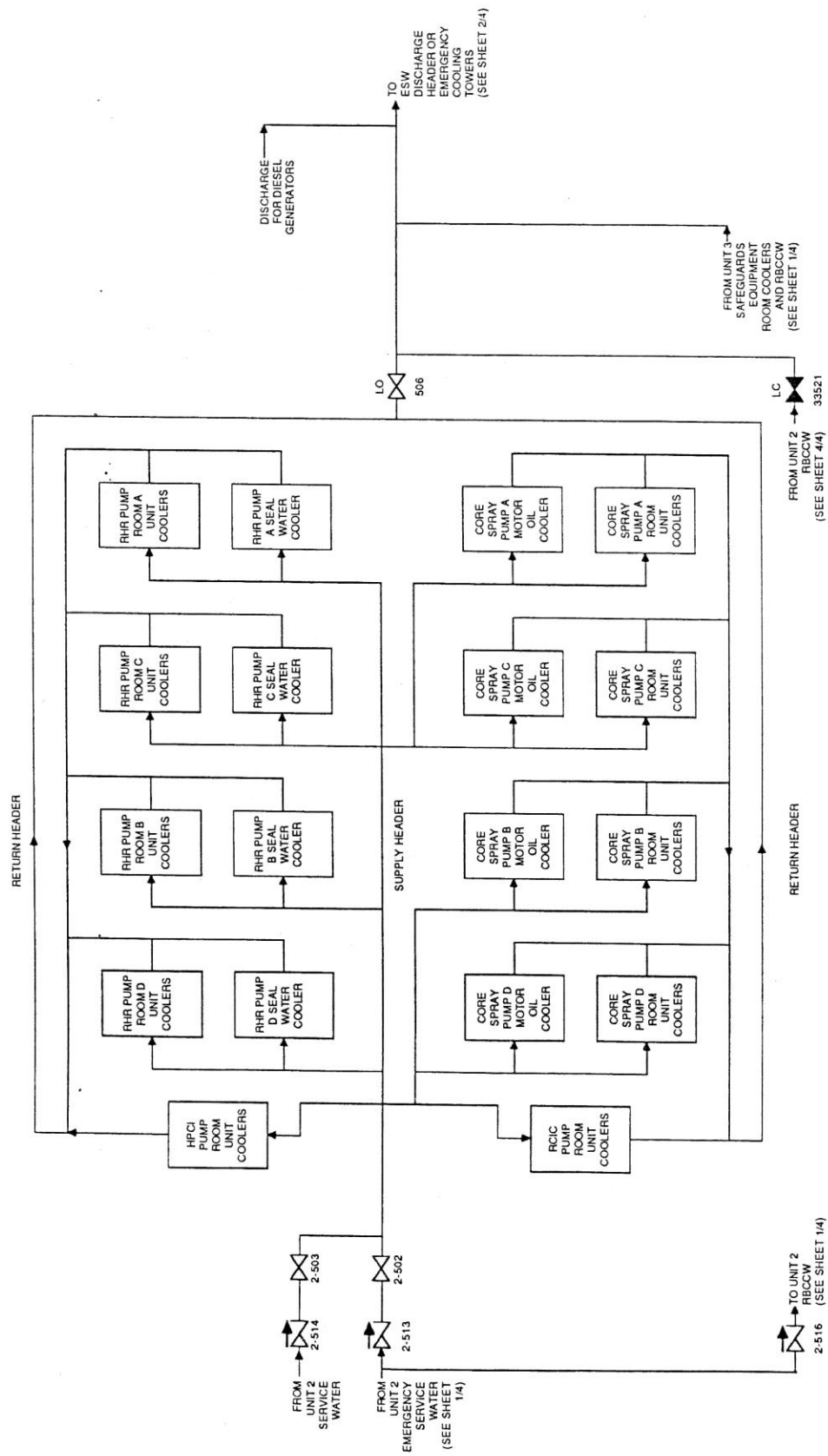
- High Pressure Service Water System (pp. 2-3)
- Emergency Service Water System (2 of 4 parts – pp. 4-7)
- 120 VAC Instrumentation Power System and Uninterruptible Power System (pp. 8-9)
- 4160 and 480 VAC Electric Power Distribution System (pp. 10-11)

---

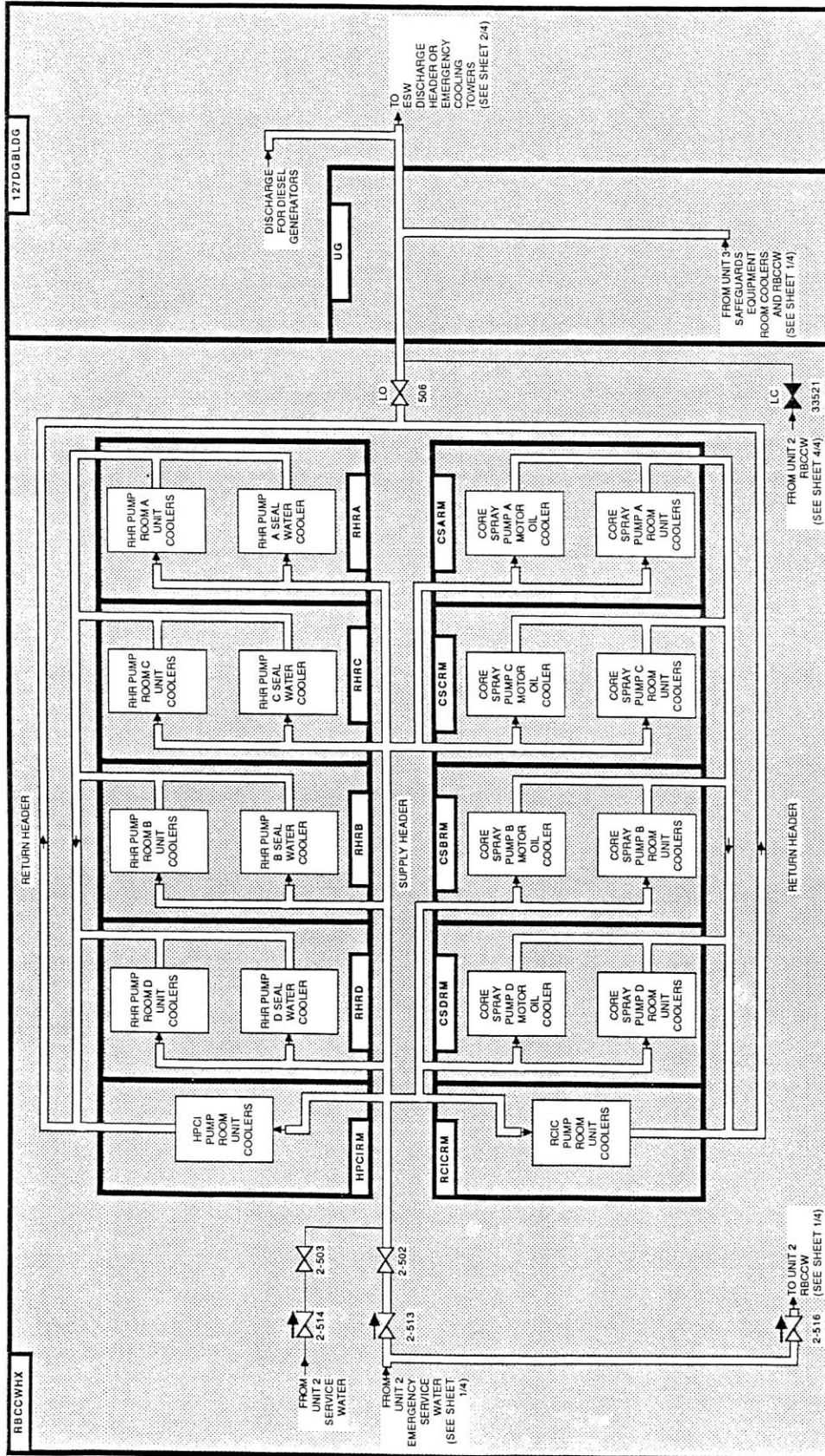
\* Sandia National Laboratories is a multi program laboratory managed and operated by Sandia Corporation, a wholly owned subsidiary of Lockheed Martin Corporation, for the U.S. Department of Energy's National Nuclear Security Administration under Contract DE-AC04-94AL85000. SAND2013-XXXX Unclassified/Unlimited Release.







- NOTES: (1) AT UNIT 3 THE SEQUENCE OF THE RHR AND THE CS SUPPLY AND RETURN TAPS IS A,C,B,D  
 (2) LOCKED OPEN VALVES ON THE INLET SIDES OF ALL PUMP SEAL AND MOTOR COOLERS  
 (3) A PNEUMATIC CONTROL VALVE ON THE INLET SIDE OF ALL ROOM COOLERS MODULATES COOLING WATER FLOW, THESE VALVES FALL OPEN



- NOTES: (1) AT UNIT 3, THE SEQUENCE OF THE RHR AND THE CS SUPPLY AND RETURN TAPS IS A.C.B.D.  
 (2) LOCKED OPEN MANUAL VALVES ARE ON THE INLET SIDES OF ALL PUMP SEAL AND MOTOR COOLERS  
 (3) A PNEUMATIC CONTROL VALVE ON THE INLET SIDE OF ALL ROOM COOLERS MODULATES COOLING WATER FLOW, THESE VALVES FALL OPEN

