



# **Biorisk Management: Risk Assessment**

---

A background graphic featuring a stylized globe with a blue rectangular box overlaid in the center. The globe is divided into several vertical segments, and the continents are visible in a light blue color. The blue box has a white border and contains the text 'Biorisk Management' in white.

**Biorisk Management**

# Learning Objectives

**By the end of the session, participants should be able to meet the following objectives:**

- Discuss biorisk management as a concept
- Identify the key components of biorisk management





## Biorisk: Definition

---

- ⚠ The **risk** associated with biological materials in the laboratory has a **safety** and a **security** component
- ⚠ **Biorisk** encompasses **biosafety** and **biosecurity**



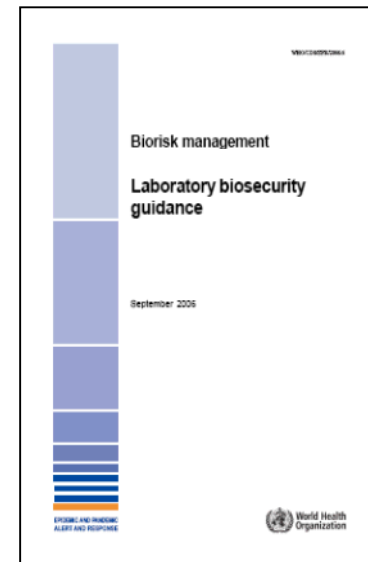
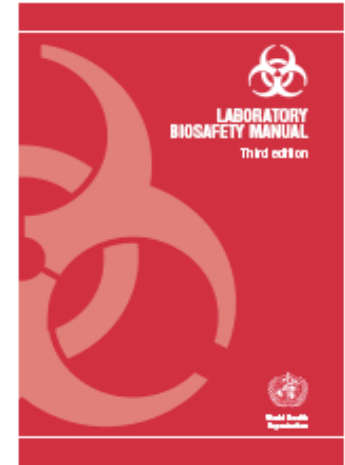
# Definitions

⚠ **Laboratory biosafety:** containment principles, technologies, and practices implemented to prevent unintentional exposure to pathogens and toxins, or their unintentional release

⚠ **Laboratory biosecurity:** institutional and personal security measures designed to prevent the loss, theft, misuse, diversion, or intentional release of pathogens and toxins

---

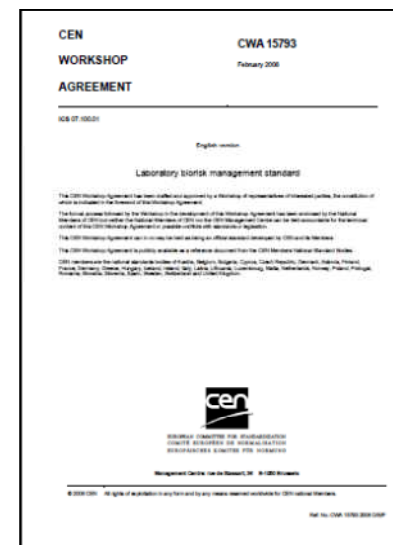
<sup>1</sup>*Laboratory biosafety manual, Third edition*  
(World Health Organization, 2004)



# Laboratory Biorisk Management

⚠ System or process to control safety and security risks associated with the handling or storage and disposal of biological agents and toxins in laboratories and facilities

⚠ CWA 15793:2008





## Group Exercise 2

In your group, take 10 min to discuss and answer the following three questions:

***How do you identify these risks?***

***Which steps do you take to manage these risks?***

***How do you know that your risk management is working, and will continue to work?***



Use **post-it notes** to write down your answers, one idea per note, and post them on a flip chart

Report your answers to the class



## Group Exercise 3

Let's get organized:

Take the *post-it notes*, and place them under one of the following columns:

Assessment	Mitigation	Performance

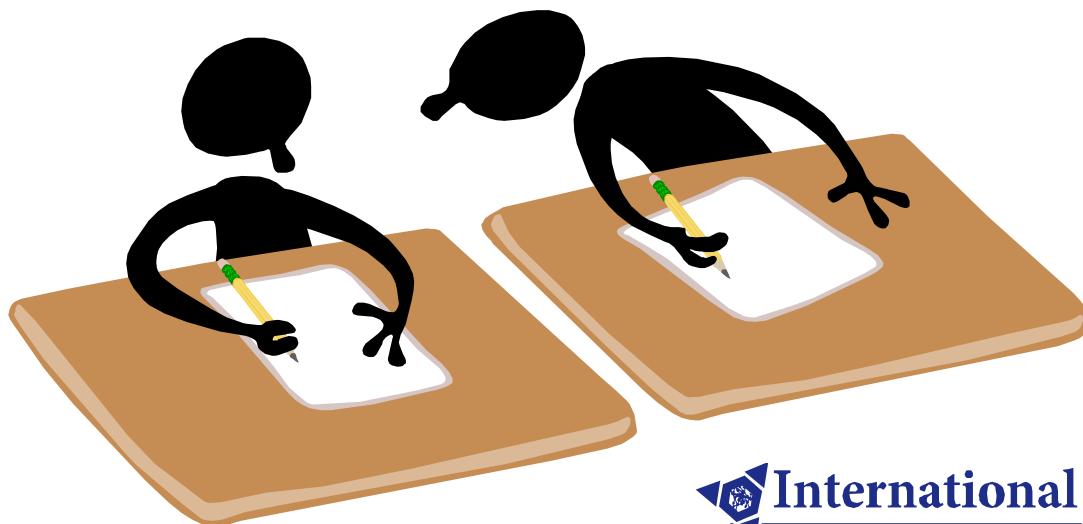


# Key Components of Biorisk Management

⚠ Biorisk Assessment

⚠ Biorisk Mitigation

⚠ Performance







# Biorisk Management: the **AMP** Model

**Biorisk Management =  
Assessment, Mitigation, Performance**



# Key Components of Biorisk Management

- ⚠ During the next sessions, we will always refer back to the AMP model and individually address the three components

**Biorisk Management =  
Assessment, Mitigation, Performance**