



Plastics in a Tough Market



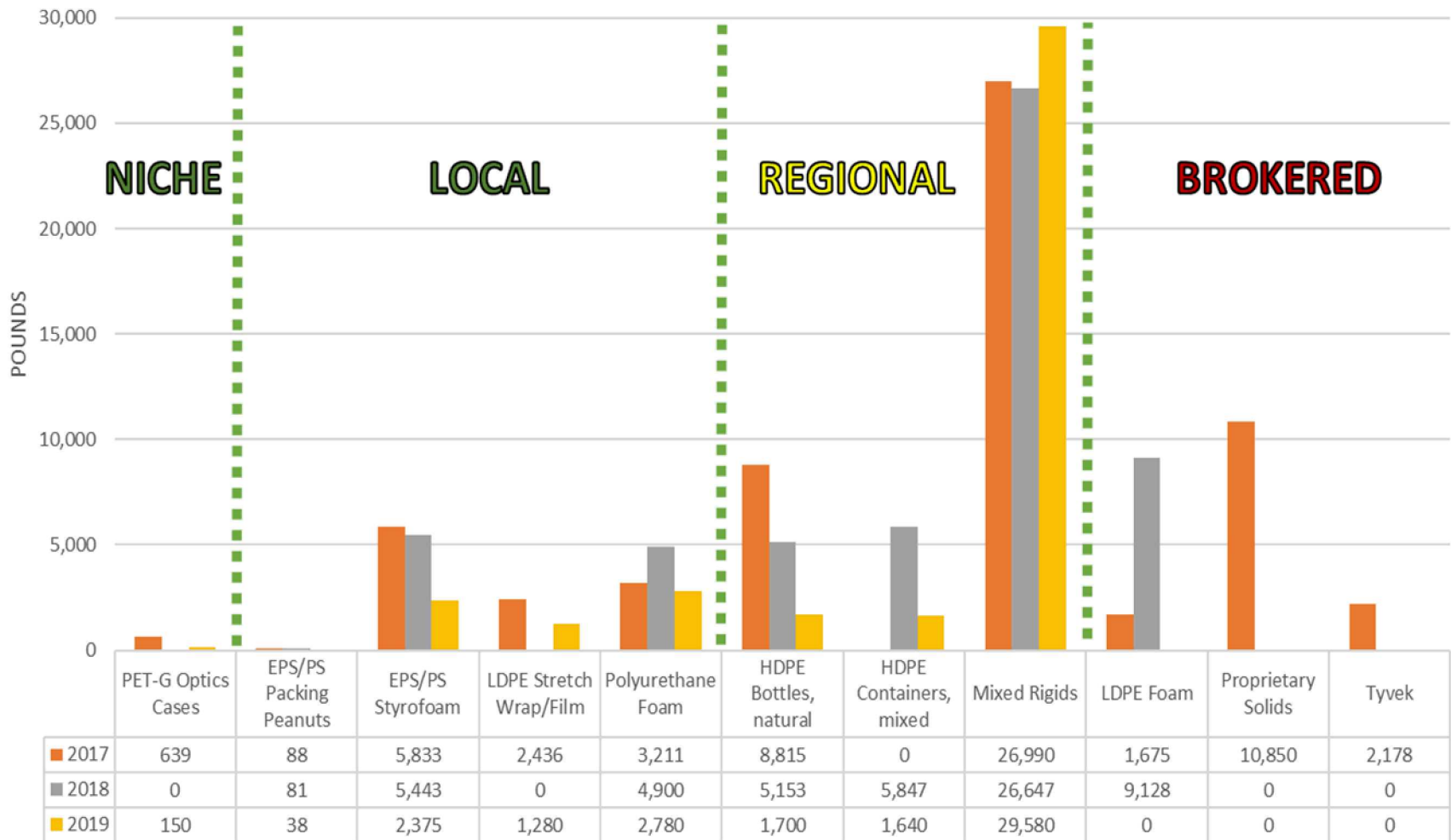
Samuel McCord
Recycling Planner

Going to cover...

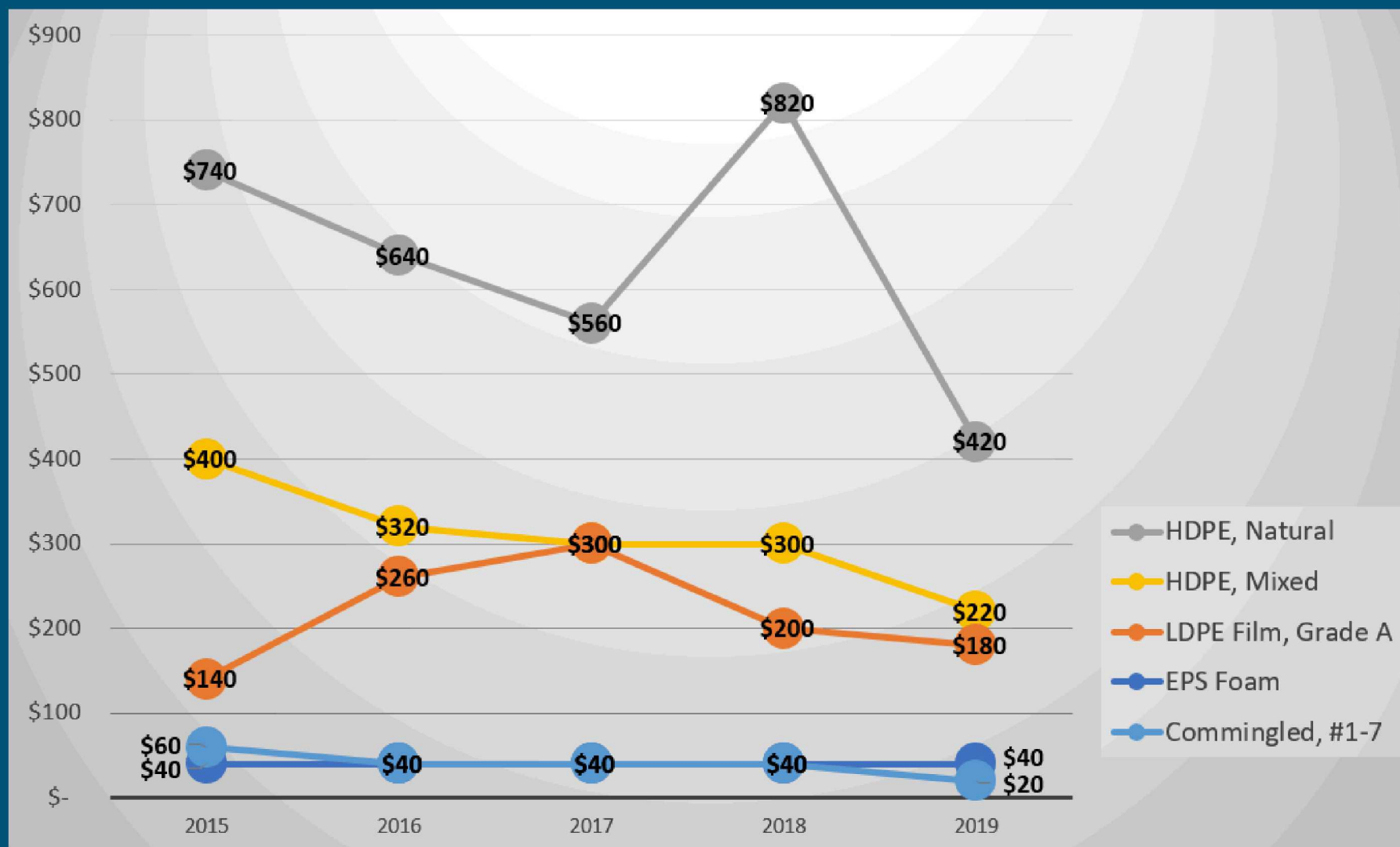
- Scrapping Outlets
- Regional Pricing
- Specific Materials Still Processed
- Viability of Plastics

Plastics Shipped in the Last Three Years from Sandia National Labs (NM)

Plastic Types Shipped



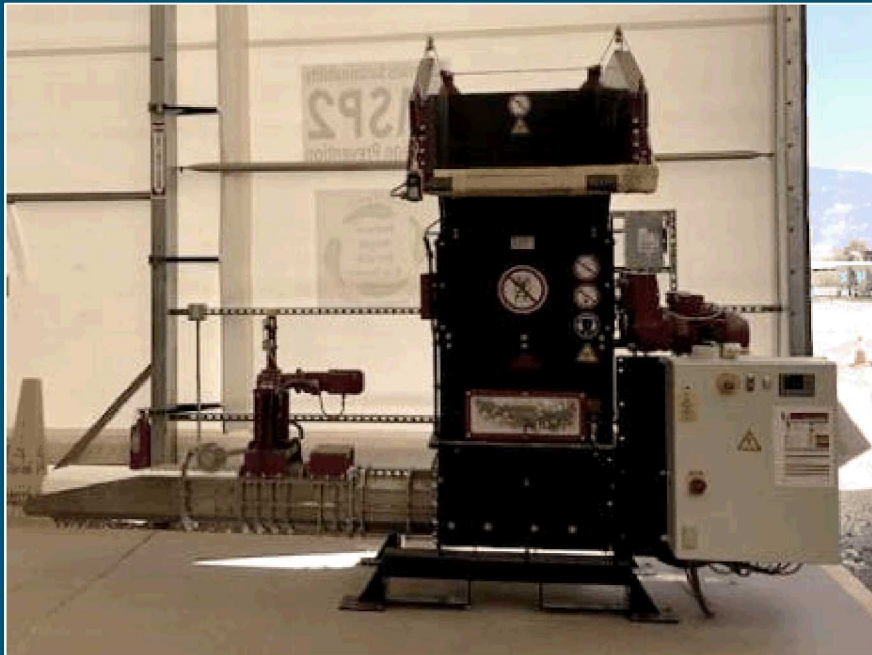
Houston Market Prices per Standard Ton from 2015 through 2019



Source: RecyclingMarkets.net, 7/2019

EPS / Polystyrene

- Post-consumer
- Hand processed onsite
- 500 lbs. per pallet
- Made into picture frames

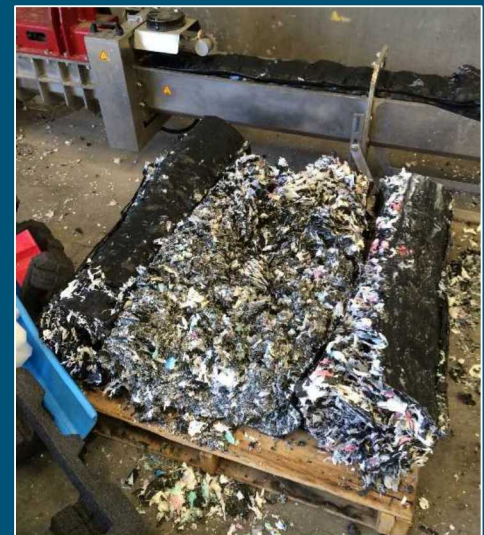
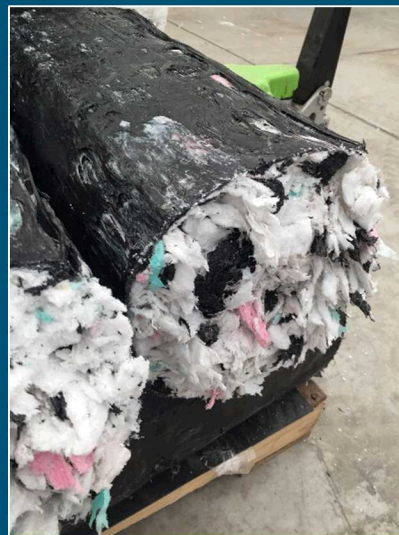


6 LDPE Colored Foam

- Same process as Polystyrene
- 1000 lbs. per pallet
- Shipped to broker in California



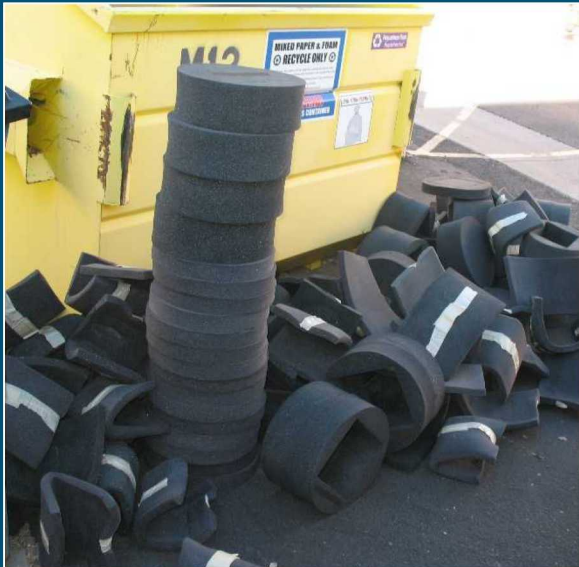
2011	2013	2015	2016	2017	2018
\$180/ton	\$200/ton	\$200/ton	\$40/ton	\$40/ton	\$0/ton



7 Polyurethane and Peanuts

- Hand collected to remove contaminants
- No mechanical processing
- Foam sold loose locally

2014	2015	2016	2017	2018	2019
\$100/ton	\$80/ton	\$80/ton	\$80/ton	\$20/ton	\$60/ton



Local
Shipping
Company

PET-G

- Rigid PET, mixed with a glycol
- Not recyclable with PET
- Returns to manufacturer to grind and reuse for new packaging
- Shipped 2011, 2017, and 2019 to California, not overseas



Proprietary Rigid Plastics

Sheets and blocks of acrylics: Lexan, Plexiglas, etc.

- Never really sure what we're getting
- Comes mixed, sometimes dirty
- Shipping in:
 - 2010-2016 = \$
 - 2017 = Accepted, no \$
 - 2018 = Declined
 - 2019 = Declined



LDPE Film (Grade A - 95% Clear)

- From busy docks
- Collected loose
- Picked clean before baling

2014	2015	2016	2017	2018	2019
\$160/ton	\$160/ton	\$80/ton	\$80/ton	\$20/ton	



Common Rigid Plastics

HDPE, Natural & Colored

- Still good value
- Keep it clean!

Mixed Plastics (1-7)

- Barely any value
- Negative value after local MRF
- How to report recycling weight?





If it doesn't make money:

- Continue collecting until market improves?
- Change what you accept?
- Tell the generators?
- Retrain generators?
- How do you report when there is known contamination?

Take Aways

- Mixed plastics is not working in the Southwest
- Identify what you have the most of and segregate it
- Look for direct buyers such as manufacturers
- Keep tabs on your markets
- Can you change your inputs? Procurement control...