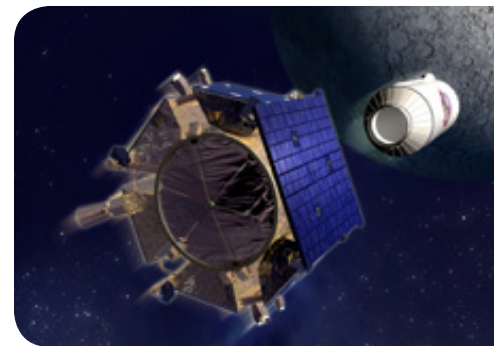


Sandia Science & Technology Park

An Internationally Recognized Technology Community



where technology works



**SANDIA SCIENCE &
TECHNOLOGY PARK**

Albuquerque, New Mexico USA

An Internationally Recognized Technology Community

Published by
the
Sandia Science & Technology Park Development Corporation
and the
Sandia Science & Technology Park Program Office

in partnership with
New Mexico Department of Workforce Solutions

and funded by a
Workforce Innovation in Regional Economic Development grant
from the
US Department of Labor



An aerial photograph of the Sandia Science & Technology Park. The image shows several large, modern industrial and office buildings with flat roofs and large windows. The buildings are arranged in a cluster, with some featuring prominent red and grey facades. In the background, there are rugged, brown mountains under a clear blue sky. The foreground shows a paved road and some greenery.

Sandia Science & Technology Park

Nationally recognized, master-planned and strategically located, Albuquerque's Sandia Science & Technology Park (SS&TP) is home to companies, scientists and researchers involved in advancing new technologies. Currently 31 companies and organizations and more than 2,050 employees reside in SS&TP's 340-acre high-tech campus.

Adjacent to the multi-billion-dollar engineering and science facilities of Sandia National Laboratories and the Air Force Research Laboratory (AFRL), SS&TP's mature companies and startups collaborate with these top laboratories on a broad assortment of technologies, products and services.

This booklet is an introduction to the SS&TP companies involved in research, technology development, design, and precision manufacturing. Details include company descriptions, major products and services, core competencies, major customers, workforce makeup and some of their educational and training requirements. Our companies possess the most productive workforce in the country measured by value added per worker (deducting the cost of material inputs in the manufacturing process, but leaving the cost of equipment and workers).



Letter from the Chairman & Executive Director

The Sandia Science & Technology Park is a premier technology and research park. Its location, adjacent to Sandia National Laboratories and the Air Force Research Laboratory, makes it desirable to the resident companies who use this proximity to further their own research and commercial progress.

There is an unequalled synergy between SS&TP businesses and their laboratory neighbors. Many are strategic suppliers to the two national laboratories and work with them on Cooperative Research and Development Agreements (CRADAS) and licensing agreements. These collaborative associations are extremely beneficial, resulting in numerous product lines from technology transfer and commercialization.

Coexistence also fosters collaboration between SS&TP companies, which use their location in this beautiful pedestrian-oriented campus, with walking trails, a child daycare center, pocket parks and shade trees, to their advantage. Just a short stroll brings residents to their partners' facilities. SS&TP management also provides regular opportunities for company interaction, creating the possibility of even more cooperation between Park businesses.

In the SS&TP, companies produce a multitude of products including precision manufactured nanotechnology, photovoltaic systems and other components for small, operationally responsive satellites, lasers and photodiodes for data communications, laser guidestar systems, materials coating, and motion control technology. They also provide services such as pulsed power systems engineering, electronics analysis, and telecommunication and IT support.

The cluster of companies and organizations in the SS&TP help make Albuquerque a desirable location for high tech careers. Positions at SS&TP companies are available for trained technicians, engineers and scientists. Disciplines in demand include engineering, physics, chemistry, materials engineering, mechanical engineering, software engineering, and electrical engineering, as well as skills in technical manufacturing, assembly, and testing.

The Sandia Science & Technology Park is a global center of technical and scientific innovation. Contact us to find out more about how you or your organization can take part in its future.

Sincerely,

Sherman McCorkle, *Chairman of the Board*
Sandia Science & Technology Park
Development Corporation

Jackie Kerby Moore, *Executive Director*
Sandia Science & Technology Park



Jackie Kerby Moore



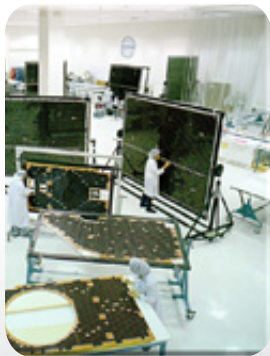
Sherman McCorkle

SS&TP Collaborations

Many of the companies in the SS&TP collaborate with each other and with the adjacent Laboratories. Here are a couple of examples.

TEAM Technologies

In addition to being a Sandia Strategic Partner in pulsed power, TEAM Technologies has licensed technology from Sandia National Laboratories for Stingray, a compact water disrupter that disables IEDs (improvised explosive devices). The company manufactured and shipped over 7000 of the life-saving units to Afghanistan in 2010, and Stingray was named one of the Best Inventions of 2010 by a leading national magazine. TEAM credits their location in the SS&TP with helping the company to grow and with bringing their collaborations with SNL to fruition.

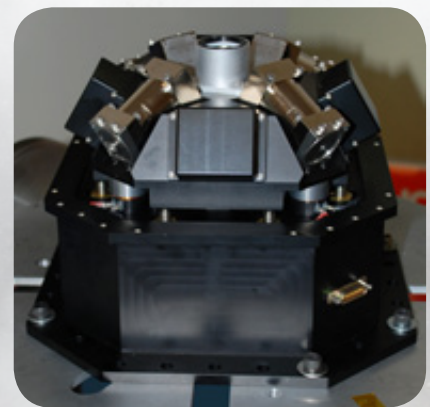


EMCORE Fiber Optics and EMCORE Photovoltaics

EMCORE Fiber Optics and EMCORE Photovoltaics have developed and commercialized a number of Sandia National Laboratories technologies. With these collaborations has come corporate growth. Over the last 12 years, EMCORE has licensed VCSEL, solar cell and transponder technologies, and plans to continue to partner with Sandia to find new business opportunities. The company also collaborates with nearby SS&TP companies including Ktech, TEAM Technologies and Analytical Solutions, using their neighbors' capabilities and services to further their own business goals.

Applied Technology Associates

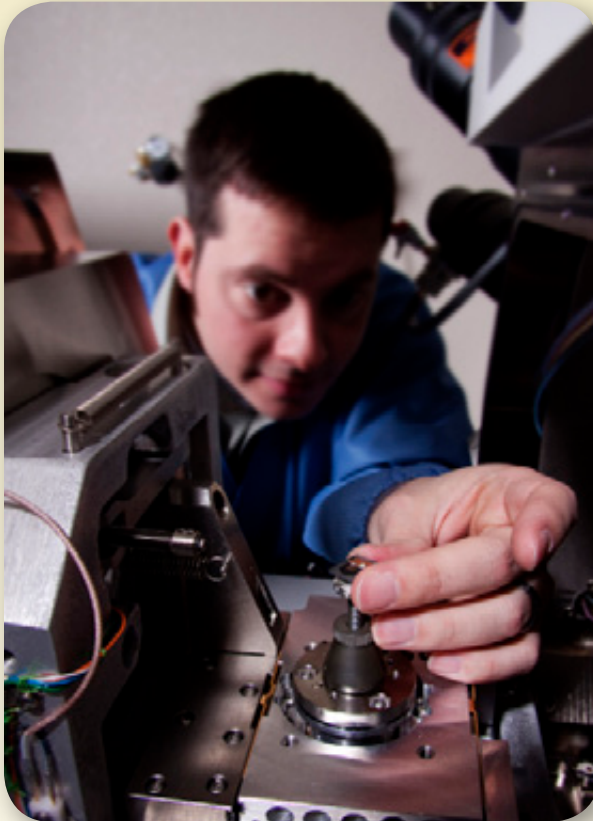
Applied Technology Associates (ATA) was founded and thrives to this day through contracts supporting the US Air Force Research Laboratory's Directed Energy & Space Vehicles Directorates. This work has led ATA to the development of a family of products in the areas of precision sensing, measurement, and control. For example, under the sponsorship of AFRL and with SBIR funds, the company recently designed a state-of-the-art fast steering mirror that ATA subsequently developed and was key to the US Airborne Laser Program's first and longest-range shoot down of a ballistic missile.





Analytical Solutions, Inc.

10401 Research Road SE - Albuquerque, NM 87123 - 505.299.1967 - asinm.com



Analytical Solutions, Inc. (ASI) is an electronic analysis laboratory providing state-of-the-art services including reverse engineering; failure and construction analysis; destructive physical analysis and non-destructive test; counterfeit device investigation and security analysis of electronic components and devices.

ASI is a DMEA Trusted IC Supplier Test Facility with the equipment and capabilities necessary to analyze electronic devices and validate them as trusted devices, providing the assurance needed for customers' internal or external suppliers in the design, manufacture, and production of high reliability products for the defense, aerospace, and commercial industries.



Products & Services

- ❖ Product Evaluation—expertise analyzing all types of microelectronic devices.
- ❖ Product Analysis—semiconductor failure and construction analysis.
- ❖ DPA/NDT—evaluate the quality of construction of a particular lot of electronic devices slated for high reliability usage
- ❖ Test Analysis—environmental and electrical reliability and qualification test services.

Major Customers

Lockheed Martin, Boeing, Honeywell, Raytheon, Goodrich, Northrop Grumman, NSA, Orbital Science, and Sandia National Laboratories.



Training & Educational Requirements

Skills required: Electronics, software engineering, and failure and reliability testing.

Education: Employees are trained in electrical engineering, electronics, test, failure and reliability, and software engineering.

Applied Technology Associates

1300 Britt Street SE - Albuquerque, NM 87123 - 505.767.1200 - aptec.com

Applied Technology Associates (ATA) is a precision sensing, measurement and controls company providing custom hardware solutions and services to government, aerospace and commercial customers. ATA also manages joint ventures, including ATA Aerospace and ATAMIR WSMR. Their market applications include Acquisition, Tracking & Pointing; Guidance, Navigation & Control; and Test & Evaluation solutions for ground, air and space systems. ATA has expanded to include a new satellite assembly, integration and test facility to support its efforts with government agencies and aerospace prime contractors.

Products & Services

- ❖ The Sensors & Systems unit develops high performance custom hardware solutions with expertise in Inertial Guidance Sensors, Beam Control Solutions and Test Instrumentation.
- ❖ The R&D Services unit conducts scientific, engineering and technician services at customer locations with expertise in research for Tactical ISR Sensor Systems, High Energy Laser Beam Control, Cryocooler Research & Test, and Space Situational Awareness.

- ❖ The Systems Test & Evaluation unit provides integrated systems engineering services including Design, Fabrication and Assembly (DFA), and Integration and Test (I&T).



Major Customers

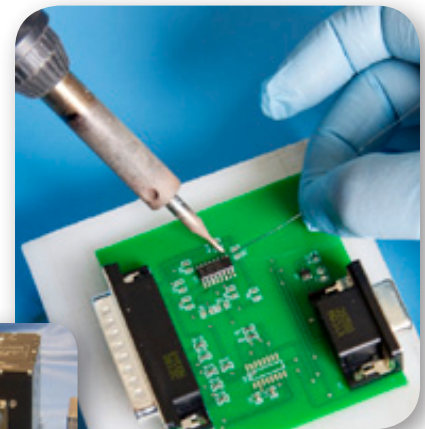
Organizations within the DoD and DOE, domestic aerospace prime contractors, international aerospace contractors, and government organizations. Local customers include Air Force Research Laboratory, Sandia

National Laboratories, Office of Responsive Space, and White Sands Missile Range.

Training & Educational Requirements

Skills required: Electrical design, board layout, circuit analysis and power/controls, modeling and simulation, material analysis, loads and design margin, thermal analysis and parts selection, software architecture design, coding, and controls system verification. Specialized skills include clean room and flow bench operations, certification in contamination control and electrostatic discharge procedures and various space flight hardware disciplines such as crimp, cable and harnessing; hand soldering; polymeric applications; and repair, rework and modifications.

Education: Employees have degrees and education in electrical engineering, mechanical engineering, computer science, physics, and math.





Center for Integrated Nanotechnologies

1101 Eubank Boulevard SE - Albuquerque, NM 87123 - 505.283.2468 - cint.lanl.gov

The Center for Integrated Nanotechnologies (CINT) is a DOE Office of Basic Energy Sciences nanoscale science research center operated as a national user facility by Los Alamos and Sandia National Laboratories. Through its Core facility in Albuquerque and Gateway facility in Los Alamos, CINT provides access to capabilities and scientific expertise. Together, CINT users and staff are establishing the scientific principles that govern the design, predict the performance, and enable the integration of nanostructured materials into the micro and macro worlds.

Products & Services

CINT is a National user facility providing access to world class researchers and capabilities via peer-reviewed technical proposals. Pre-competitive research that will be published in the open literature can be approved for no-fee access. Proprietary research may be conducted in accord with Federal regulations for full-cost recovery. Joint proposals involving other national user facilities, including the Los Alamos Neutron Science Center and the National High Magnetic Field Laboratory, are encouraged. The scientific staff and capabilities at CINT are organized into four interdisciplinary Science Thrusts:

❖ **Nanophotonics & Optical Nanomaterials**—synthesis, excitation and energy transformations of optically active nanomaterials and collective or emergent electromagnetic phenomena (plasmonics, metamaterials, photonic lattices).

❖ **Nanoscale Electronics and Mechanics**—control of electronic transport and wavefunctions, and mechanical coupling and properties using nanomaterials and integrated nanosystems.

❖ **Soft, Biological & Composite Nanomaterials**—solution-based materials synthesis and assembly of soft, composite and artificial bio-mimetic nanosystems.

❖ **Theory & Simulation of Nanoscale Phenomena**—assembly, interfacial interactions, and emergent properties of nanoscale systems, including their electronic, magnetic, and optical properties.

Major Customers

Academia, Industry, and Government Researchers.

Training & Educational Requirements

Handled through Sandia and Los Alamos National Laboratories.



Computer Science Research Institute

1450 Innovation Parkway SE - Albuquerque, NM 87123 - 505.845.7599 - cs.sandia.gov

The Computer Science Research Institute (CSRI) is a research organization within Sandia National Laboratories. The institute engages in collaborative computing and mathematical research with academia and industry. Their work advances the state of the art of computational science and also creates capabilities that support Sandia's missions.

Products & Services

As a research organization within Sandia National Laboratories, CSRI's major line of business is research and development in support of the federal government. CSRI has distinguishing expertise in high performance computing, mathematics, and algorithms.

Major Customers

CSRI's principal customers are within the federal government, but they also have substantial interactions with a range of high tech companies.

Training & Educational Requirements

Handled through Sandia National Laboratories.





EMCORE Fiber Optics

1600 Eubank Boulevard SE - Albuquerque, NM 87123 - 505.559.2600 - emcore.com/fiber_optics

EMCORE Fiber Optics designs, develops, and manufactures high-quality, cost-effective solutions for today's data communications, telecommunications, cable television, and fiber-to-the-home/curb/business markets. With a vertically integrated approach, EMCORE is able to offer art-to-part solutions in various degrees of assembly. The base technologies include VCSEL lasers, edge-emitting lasers, and PIN/APD photodiodes. EMCORE's product offerings range from the level of bare die and packaged components/optical subassemblies, through complete transponder and transceiver assemblies.

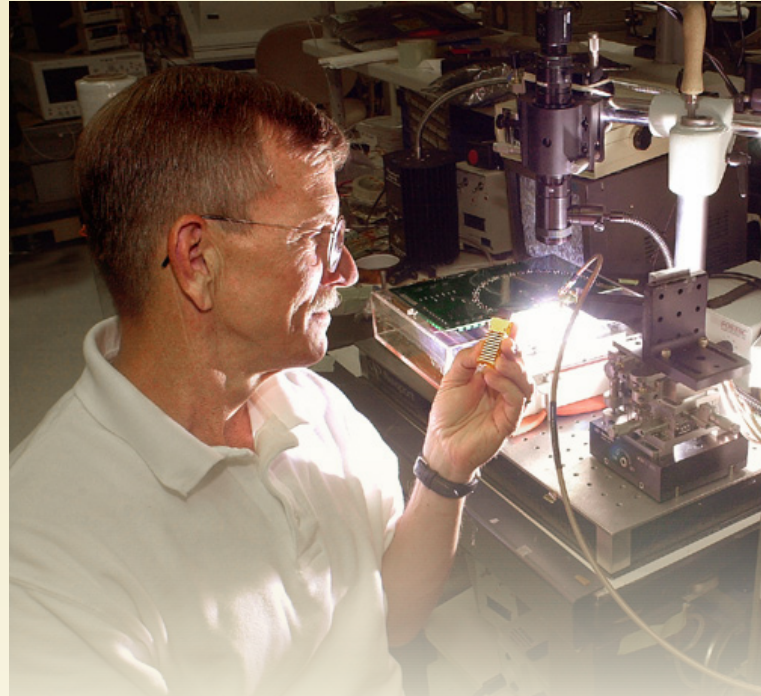
Products & Services

Expertise in semiconductor materials, semiconductor processes, fiber optic device, and product design and manufacturing.

- ❖ Laser and photodetector devices for fiber optics (both long wavelength and short wavelength).
- ❖ Transmitter and receiver modules and sub-assemblies for fiber optic communications.
- ❖ Transceivers for fiber optic communications.

Major Customers

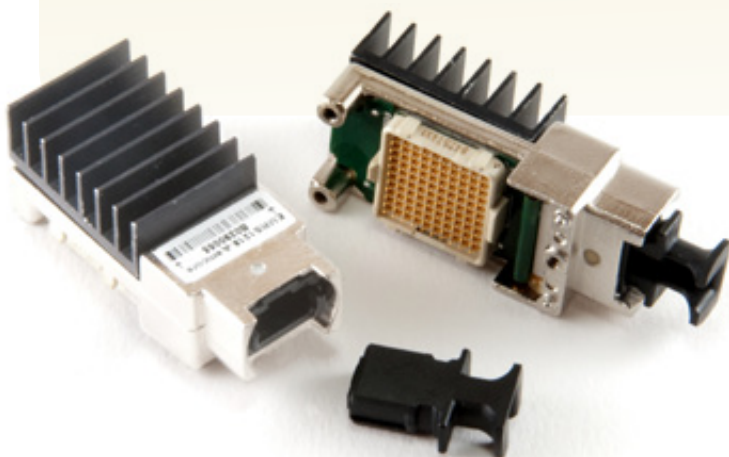
Commercial data communications, telecommunications, and cable television markets. They also do work for government programs that are closely aligned with commercial fiber optics markets.



Training & Educational Requirements

Skills required: Background in engineering, mechanical engineering, materials science, or chemical engineering; semiconductor processing.

Education: Most employees with college degrees have obtained them in electrical engineering and mechanical engineering.



EMCORE Photovoltaics

10420 Research Road SE - Albuquerque, NM 87123 - 505.332.5000 - emcore.com/solar_photovoltaics

EMCORE Photovoltaics designs and manufactures multi-junction solar cells and fully integrated solar panels for satellite and terrestrial power generation. The Photovoltaics Division operates from a 50,000-square-foot facility and has the capacity to produce approximately 350kW of power for space photovoltaic applications and 350MW for terrestrial use. Having well-established partnerships with major satellite manufacturers and proven on-orbit performance, EMCORE plays a vital role in the evolution of telecommunication and data communications around the world. EMCORE is committed to the renewable energy business and is uniquely positioned to succeed in the concentrated photovoltaic (CPV) power market by driving the costs of solar power toward grid parity within the next few years.

Products & Services

Expertise in materials science, semiconductor device design and fabrication, high volume semiconductor device/solar cell manufacturing, and solar power system design and fabrication.

- ❖ Solar cells and panels for space power generation.
- ❖ Solar cells and modules for terrestrial power generation.
- ❖ Design and testing services for solar power components and systems.

Major Customers

Space Systems/Loral, Lockheed Martin, Northrop Grumman, and Alliant Techsystems.

Training & Educational Requirements

Skills required: Hands-on semiconductor wafer processing, soldering, crimping, microelectronics welding, and wire harness assembly.

Education: Employees have been educated in engineering, physics, and materials science.





FASORtronics, LLC

1400 Eubank Boulevard SE - Albuquerque, NM 87123 - 505.918.3243 - fasortronics.com

FASORtronics is a start-up company focused on the design and development of laser guidestar systems for astronomy and other single-frequency laser systems. By defeating the blurring effects from atmospheric turbulence, a ground-based adaptive optical telescope making use of a laser guidestar can achieve unprecedented resolution of astronomical objects. FASORtronics specializes in building the laser systems for creating the brightest guidestars in the world. FASORtronics is located within the TEAM Technologies, Inc. facility where an ideal incubation environment is provided by leveraging the broad engineering services of TEAM for the development of new commercial laser products.

Products & Services

- ❖ Sodium Guidestar Laser systems, single-frequency lasers, and non-linear frequency converted lasers.
- ❖ Unique set of skills related to the design and manufacture of high power single-frequency lasers.

- ❖ Techniques for the efficient frequency conversion of lasers and in the design of extremely stable and low-noise lasers.
- ❖ Automation of highly complex laser systems for robust remote operation.

Major Customers

Current customers include the Office of Naval Research/Code-32 and the University of Arizona. Previous contracts include those with the European Southern Observatory, the W.M. Keck Observatory, Sandia National Laboratories, and Boeing-LTS/Air Force Research Laboratory.

Training & Educational Requirements

Skills required: Lasers, optics, opto-mechanics, analog electronics, embedded controllers with an FPGA, and computer control.

Education: Applied physics, optical sciences, and electrical, mechanical, and software engineering.



Heel USA

10421 Research Road SE - Albuquerque, NM 87123 - 505.559.2900 - heelusa.com

Heel helps people live healthier lives. Albuquerque is home to the US subsidiary of Heel, a research-oriented international company that distributes to more than 50 countries. The company's homeopathic medicines such as Traumeel work to stimulate the body's natural ability to heal itself. Heel enforces quality control from the time the plants that produce their medicines are still seeds until they are finished products. Heel commits substantial resources to understanding the mechanisms of their drugs and providing further evidence of their efficacy.

Products & Services

Homeopathic medicines—including Traumeel, Neurexan, Zeel, Engystol, Detox-Kit, Allergy, and Viburcol.

Educational programs—delivered to doctors' offices as well as hosted events with internationally known speakers helping practitioners better understand bioregulatory medicine.

Major Customers

Physicians, licensed health care practitioners, independent pharmacies and retailers throughout the US including Whole Foods, Sunflower, Vitamin Cottage, Pharmaca and GNC.



Training & Educational Requirements

Skills required: Accounting, computer, analytical, communications, sales, math, assembly line experience, and IT skills including web development, help desk support, and data administration.

Education: More than half of the employees have undergraduate or graduate degrees with majors including accounting, business administration, management, finance, and communications.



Ktech Corporation

1300 Eubank Boulevard SE - Albuquerque, NM 87123 - 505.998.5830 - ktech.com

Ktech is an employee-owned, high technology firm based in Albuquerque, NM, providing technical services and manufacturing expertise worldwide. Headquartered in the Sandia Science & Technology Park, Ktech occupies approximately 175,000-square-feet of office, light lab, and custom manufacturing facilities. Ktech is a world leader in pulsed power and directed energy systems development for commercial and military applications.

Products & Services

- ❖ Pulsed power systems engineering
- ❖ High Power Microwave (HPM) systems engineering
- ❖ Accelerator development
- ❖ Radiation sciences
- ❖ Large research facility O&M
- ❖ Ground, sea and airborne telemetry system engineering
- ❖ Custom manufacturing
- ❖ Fully automated control systems
- ❖ Technical publications

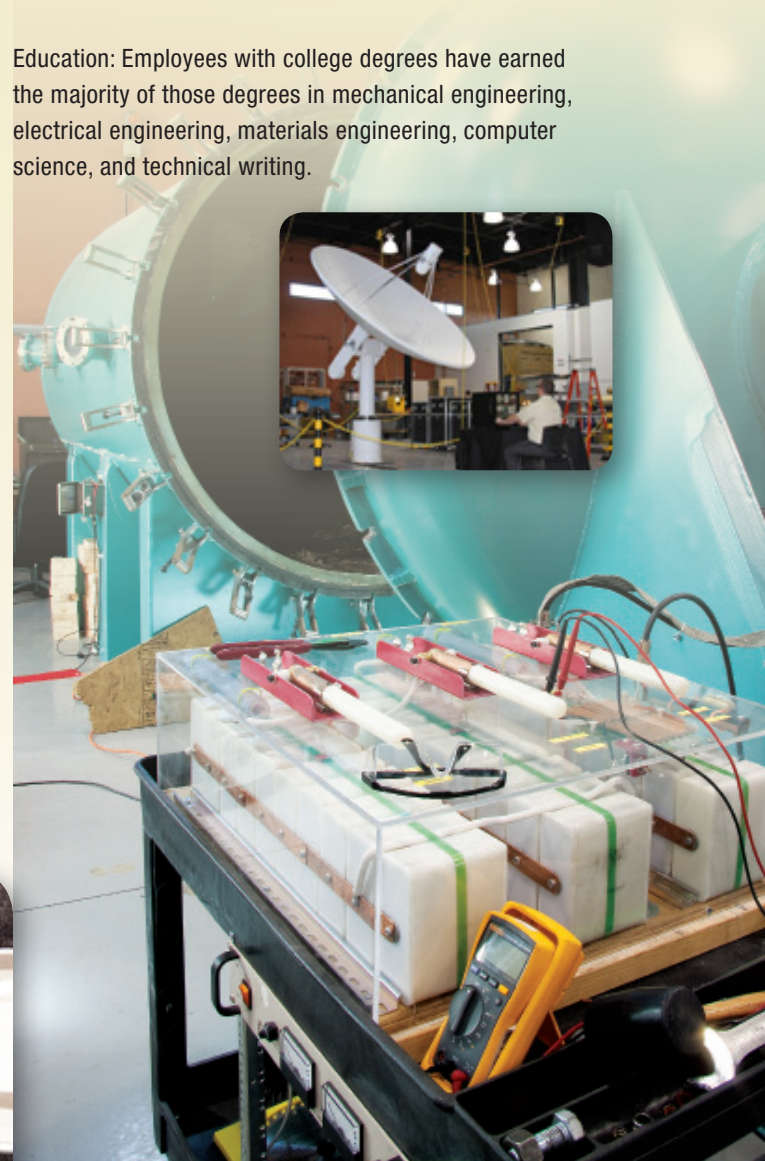
Major Customers

A variety of agencies within the DoD, DOE, and commercial areas supporting directed energy system development, compact pulsed power applications for commercial and military applications, and telemetry support for agencies such as NASA and SMDC.

Training & Educational Requirements

Skills required: Mechanical engineering and design, electrical engineering, materials engineering, software design, technical writing and editing, electromechanical engineering, and explosives handling.

Education: Employees with college degrees have earned the majority of those degrees in mechanical engineering, electrical engineering, materials engineering, computer science, and technical writing.



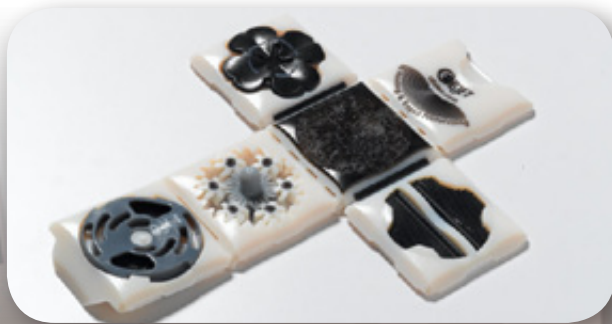
MCAD Technologies, Inc.

10501 Research Road SE - Albuquerque, NM 87123 - 505.323.6144 - mcad.com

MCAD Technologies specializes in sales, support and training of engineering productivity tools including 3D Solid Modeling, Design Validation, Product Data Management, Product Documentation and 3D Color Printing Technology. These solutions utilize the market-leading technologies provided by SolidWorks and OBJET Geometries. MCAD's Applications Engineers can easily and accurately assess customers' current processes, make recommendations, and assist in implementing solutions that help increase productivity within a short period of time. Working in the mechanical engineering community for over two decades, MCAD has earned the reputation as one of the top organizations for sales and customer support.

Products & Services

❖ Sales, support and training of engineering productivity tools including 3D solid modeling, design validation, product data management, product documentation, and 3D color printing technology.



- ❖ Certified product experts are all degreed mechanical engineers.
- ❖ Certified product experts have experience in a wide range of fields including product development, manufacturing, and structural analysis.

Major Customers

Sandia National Laboratories, Los Alamos National Laboratory, Air Force Research Laboratory, Ball Aerospace, Boeing, Sierra Nevada Corp., Ktech, EMCORE and many others in New Mexico, Colorado and the Pacific Northwest.

Training & Educational Requirements

Skills required: Mechanical design, Microsoft Office (Excel and Word), CAD software experience, and outside sales experience. Employees will be trained in all areas of software that they sell. Prefer, but do not require training in SolidWorks.

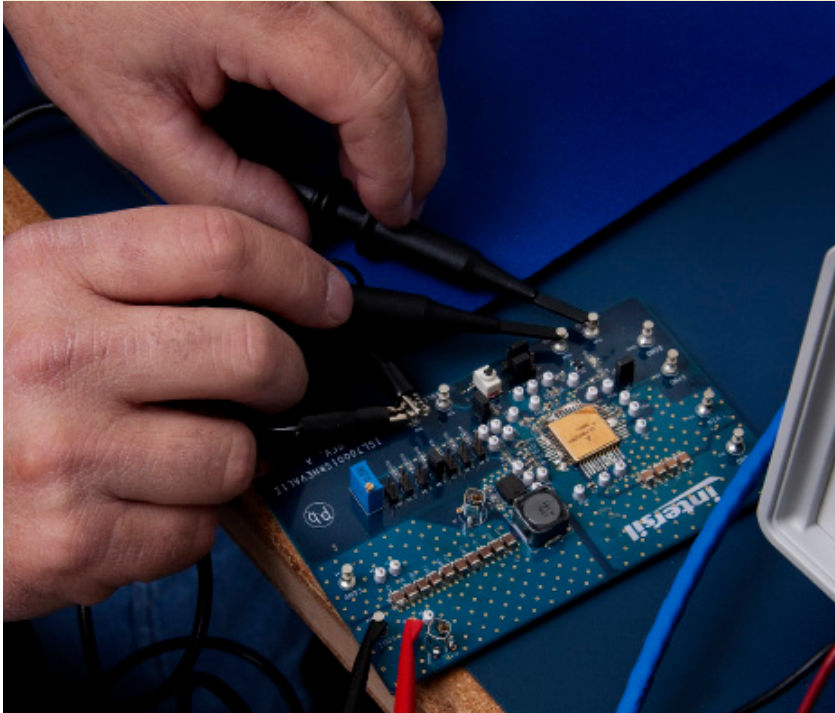
Education: The majority of employees have college degrees, while some also have graduate degrees. MCAD employs product experts with mechanical engineering degrees, and this is part of how they differentiate their company.





Moog, Inc.

1451 Innovation Parkway SE - Albuquerque NM, 87123 - 505.314.9071 - moog.com



Training & Educational Requirements

Skills required: Digital design, Actel and BGA design, VHDL skills, and general signal processing.

Education: Most employees have undergraduate or graduate degrees in fields including electrical engineering and mechanical engineering.

Over fifty years ago, Moog started as a designer and supplier of aircraft and missile components. Today, the company's motion control technology enhances performance in a variety of markets and applications, from commercial aircraft cockpits, to power-generation turbines, to Formula One racing, to medical infusion systems.

Products & Services

- ❖ Actuation and motion control systems for space and defense, aircraft, medical device and industrial applications.
- ❖ Expertise in hydraulic and electro-mechanical actuation systems.

Major Customers

NASA, Boeing, Lockheed Martin, and Airbus.



Moog-CSA Engineering

1451 Innovation Parkway SE, Suite 100 - Albuquerque NM, 87123 - 505.323.4900 - csaengineering.com

Moog-CSA Engineering provides products and services in vibration suppression, precision motion and noise control including secondary payload adapters, SoftRide launch vibration and shock attenuation systems, ground test equipment including very low frequency suspension/isolation systems and hexapod positioners, mechanical design, finite element analysis, vibration isolation and damping, control systems and dynamic testing.

Products & Services

The company has worked on hundreds of programs, most involving launch vehicles, aircraft, missiles or spacecraft. CSA's core areas are structural dynamics, control systems, vibration control and structures.

- ❖ Vibration isolation systems and dampers
- ❖ Systems for ground testing of spacecraft and aircraft
- ❖ Launch load alleviation for spacecraft and missiles
- ❖ Hexapod positioners and flight motion simulators
- ❖ Metal and composite payload adapter
- ❖ Stable platforms

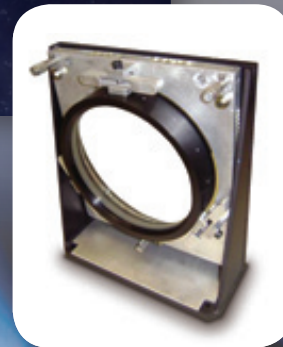
Major Customers

Air Force, Army, DARPA, NASA, Navy, and NRO, ULA, Lockheed Martin, Raytheon, Boeing, SpaceX, and L3.

Training & Educational Requirements

Skills required: Finite element modeling and analysis; computer aided design tools such as SolidWorks, I-DEAS, UG-NX; Matlab, and C++.

Education: Most employees are mechanical or electrical engineers; roughly one-third have a master's or PhD degree. They work in areas including structural design, analysis, and testing, structural dynamics, control systems, vibration passive and active control, opto-mechanical systems, control-structure interaction, and systems engineering where multi-disciplinary skills are required. As a highly engineered products company, Moog-CSA Engineers work to provide vibration and motion control services and product solutions to our customers that include both standard offerings such as tuned mass dampers, gravity off-load test support equipment, and reaction mass actuators as well as customized solutions.





Materials Processing & Coatings Laboratory

10421 Development Road SE - Albuquerque, NM 87123 - 505.338.4900
ktech.com/Pulsed_Power/Materials_Processing/Materials_Processing.html

Ktech's 13,000-square-foot Materials Processing & Coatings Laboratory facility is a one-stop shop for precision machining with single point diamond turning, electrochemical coatings and polishing with an electrochemical processing lab, and vacuum coatings with hydrogen and vacuum firing, physical vapor deposition, and plasma etching capabilities.

Products & Services

- ❖ Physical Vapor Deposition for micron thin film deposition using various materials for sensors, optics, and filters.
- ❖ Electrochemistry for electrochemical cleaning and plating for high purity films including Aluminum electroplating.
- ❖ Single Point Diamond Turning for precision machining including optical quality finishes.
- ❖ Metrology for precision measurements.



Major Customers

Sandia National Laboratories, Lawrence Livermore National Laboratory, Los Alamos National Laboratory, Air Force Research Laboratory, and NSTech.

Training & Educational Requirements

Skill requirements: materials science, vacuum technology, chemistry/chemical engineering, physics, electronics, machining and machine tool technology including programming, precision assembly, thin film technology, and mechanical design/mechanical engineering.

Education: The majority of employees have college degrees in physics, chemistry or machine tool technology. Some also have graduate degrees in physics or chemistry.



Nanogenesis, A Division of AEGIS Technologies Group

10501 Research Road SE, Suite D - Albuquerque, NM 87123 - 505.938.9225 - nanogenesisgroup.com

Nanogenesis was formed in 2010 in an effort to create a unique identity for the advanced technology development arm of AEGIS Technologies (Huntsville, AL). The team was originally called the Microsystems Group at AEGIS Technologies. In the late 1990s and early 2000s, the Microsystems Group primarily supported the development of MEMS and photonic technologies in Huntsville. Their work has expanded significantly over the last five years, with new laboratories in Albuquerque, New Mexico, opening in 2008, new clean room and electro-optics facilities in Huntsville in 2009, and personnel stationed in the Oak Ridge, Tennessee, area in 2010.

Products & Services

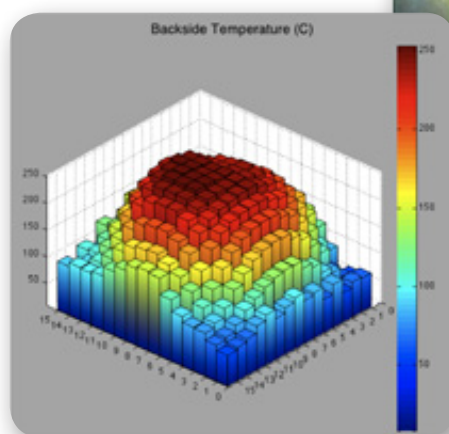
Nanogenesis offers products and services in the areas of:

- ❖ Sensors and Instrumentation
- ❖ Optical components
- ❖ Laser Protection
- ❖ Energy
- ❖ Terahertz
- ❖ Life Sciences
- ❖ Physics-based modeling

Training & Educational Requirements

Skills required: Engineering, programming (C, MATLAB, LabVIEW, Perl, Python), physics-based modeling, systems engineering, and strong interpersonal skills.

Education: All employees have college degrees, with the majority having degrees in engineering, physics, marketing or computer science.





Poly-Flow Engineering

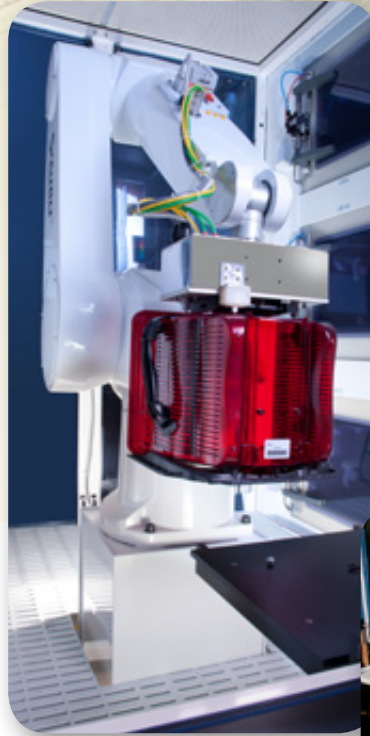
10800 Gibson Avenue SE - Albuquerque, NM 87123 - 505.338.8410 - polyflow.com



Poly-Flow Engineering manufactures capital equipment for the semiconductor, optical fiber, and medical industries. The company offers equipment in 200/300/450 mm configurations for critical slurry delivery applications; process chemical delivery; FOUP, FOSB, SMIF pod and reticle pod purifying; wafer cleaning, as well as leading the industry in quartzware and parts cleaning equipment. Poly-Flow's full automation and factory integration features are standard for critical cleaning applications. Flexible configuration style conveyor systems are also available for high throughput container cleaning applications.

Products & Services

The company's expertise is in semiconductor support operations. Poly-Flow manufactures carrier cleaning equipment, acid and solvent chemical benches, and chemical delivery equipment.



Major Customers

Semiconductor manufacturers.

Training & Educational Requirements

Skills required: Equipment engineering, assembly, and testing.

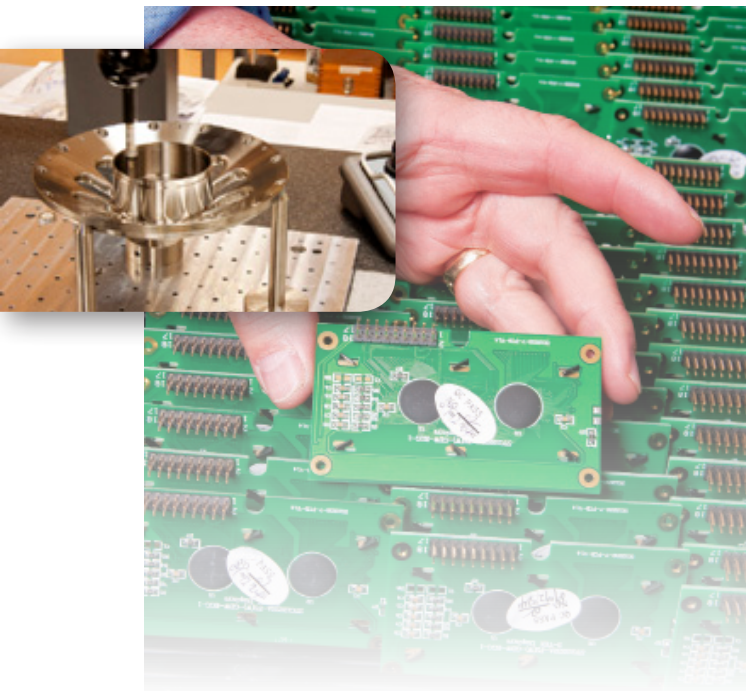
Education: Employees have a mix of educational backgrounds with undergraduate and graduate degrees. About half of the undergraduates have majors in engineering and half in business administration. At the masters degree level, the mix of engineering and business degrees is approximately the same.



TEAM Technologies, Inc.

1400 Eubank Boulevard SE - Albuquerque, NM 87123 - 505.291.0182 - team-technologies.com

TEAM Technologies is an ISO 9001:2008 registered engineering, manufacturing, and product development company. It is a minority owned and operated, SBA certified 8(a)/SDB firm serving aerospace, defense, energy, national laboratory, industrial automation, medical, and industrial commercial clients. TEAM's SS&TP facility, with over 40,000-square-feet of floor space, houses a state-of-the-art machine shop; electronics manufacturing facility; electrical, mechanical, and controls engineering labs; metrology & inspection facility; and administrative office space.



Products & Services

Expertise in high performance data acquisition systems development; multi-platform distributed and real time control systems design; development, installation and testing; highly flexible and re-configurable data acquisition and process control application software design and development; embedded systems; FPGA; ultrafast electromechanical/pneumatic linear and rotary actuators.



Products and services marketed worldwide include:

- ❖ Pulse power diagnostics and instrumentation
- ❖ Real time controls
- ❖ Energetic systems development
- ❖ Explosive ordnance disposal
- ❖ Explosive breaching
- ❖ Photovoltaic inspection and diagnostics
- ❖ Medical and industrial controls
- ❖ Procurement portal for rapid acquisition of parts and equipment

Major Customers

Sandia National Laboratories, Lawrence Livermore National Laboratory, Los Alamos National Laboratory, United States Military, Law Enforcement, URS, Ethicon Endo-Surgery, and EMCORE.

Training & Educational Requirements

Skills required: Mechanical engineering and design, electronic engineering and design, software design, and electronic manufacturing to include state-of-the-art surface mount technology. The company also hires machinists, machine operators, and individuals for mechanical inspection, with both CMM and video systems to include open setup.

Education: The majority of college degrees which employees have completed are in engineering, mechanical engineering, electrical engineering, and business.



Park Metrics

Employees and Companies

Companies/Organizations **31**

Employees **2,085**

Salaries

Average Salary in Park **\$71,612**

Average Salary in Albuquerque **\$39,342**

Cumulative Payroll **\$2.3 billion**

Available Space

Total Acres **340**

Available Acres **238**

Total Square Footage **989,425**

Available Square Footage **70,478**

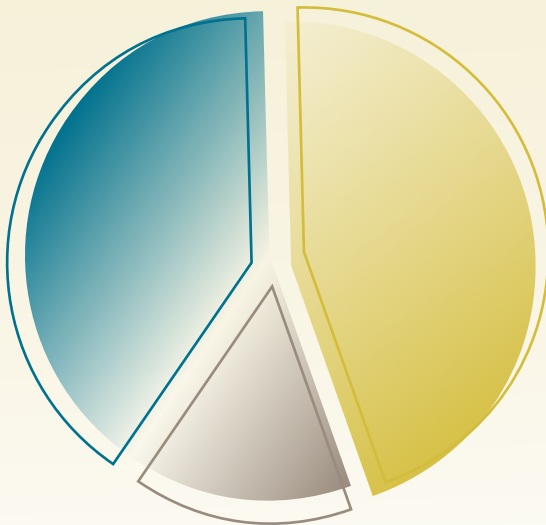
Vacancy Rate **7%**

Public & Private Investment in Park

Public **\$69 million**

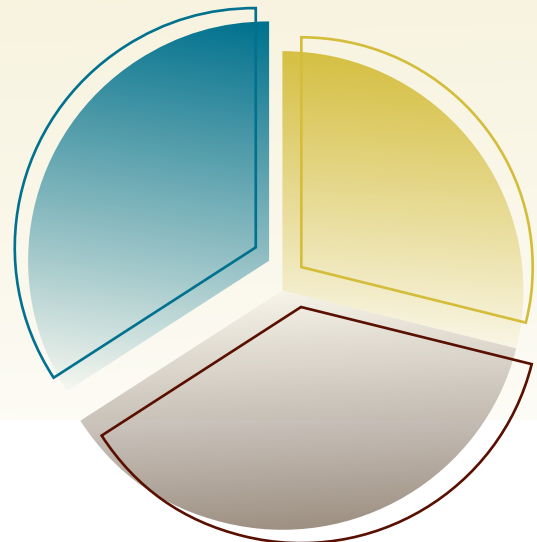
Private **\$282 million**

Total **\$351 million**



Workforce Job Classification

- Professional/Engineering 40%
- Technician/Technologist 45%
- Management/Administrative 15%



Workforce Education

- Graduate School 29%
- College 37%
- Certification/Other 34%

Survey Description

This booklet features selected companies in the Sandia Science & Technology Park who responded to an employer based labor market survey. The SS&TP Development Corporation and the SS&TP Program Office prepared and administered the survey and produced the booklet using survey results in cooperation with the New Mexico Department of Workforce Solutions.

The SS&TP participating companies were selected for their involvement in energy efficient high-technology design and manufacturing, or for being in the supply chain of products and services marketed to government entities, business and/or industry.

The surveys were distributed via email along with a cover letter and return email address. They requested short answer quantitative and qualitative information on company description, major products and services, core competencies and major customers and markets served. Additional information

was sought on workforce makeup and educational and training requirements.

NM WIRED

The New Mexico Department of Workforce Solutions works with public and private partnerships in the New Mexico Workforce Innovation in Regional Economic Development (NM WIRED) initiative. NM WIRED's goals are significant—to stimulate entrepreneurship, to advance the development of the technical workforce, and to create a public policy environment that supports and rewards innovation.

NM WIRED is a partnership of the New Mexico workforce development system, local businesses, economic development organizations and educational institutions. Its goal is to drive local economic transformation by promoting and integrating economic workforce development activities, and ensuring that all New Mexicans have access to educational opportunities, cutting edge workforce training, and high-quality employment opportunities.

SS&TP and SSTPDC Overview

The Sandia Science & Technology Park (SS&TP) is a 300+ acre technology community affiliated with Sandia National Laboratories. Resident companies and organizations have easy access to world-class facilities, technologies, scientists, and engineers.

The SS&TP Program Office was formed in 1998 to assist in the development of the Park and provision of services to its residents. It is funded by Sandia National Laboratories.

The Sandia Science & Technology Park Development Corporation (SSTPDC) was formed in 1998 to assist in the development of the SS&TP and its high speed telecommunications infrastructure. It is a non-profit 501 c3 charitable foundation.

Park Recognition

Outstanding Research Park of the Year
(Association of University Research Parks)

Community Leadership Award
(Association of University Research Parks)

Career Achievement Award
(Association of University Research Parks)

Technology-Led Economic Development Award
(US Department of Commerce Economic Development Administration)

Public-Private Partnership Award
(International Economic Development Council)

Sandia Science & Technology Park

An Internationally Recognized Technology Community

Sandia Science & Technology Park Development Corporation

1451 Innovation Parkway SE, Suite 600, Albuquerque, NM 87123-3853
Sherman McCorkle, Chairman and CEO, 505.843.1346, sherman.mccorkle@lmco.com
Carl Becker, Project Engineer, 505.843.4281, carl.l.becker@lmco.com

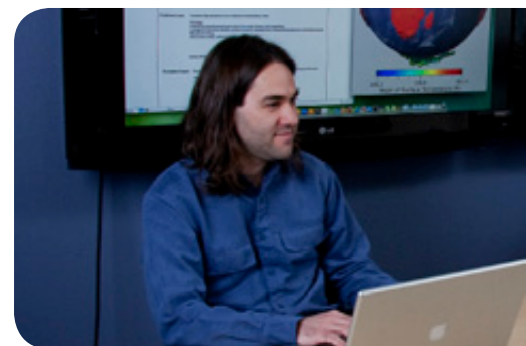
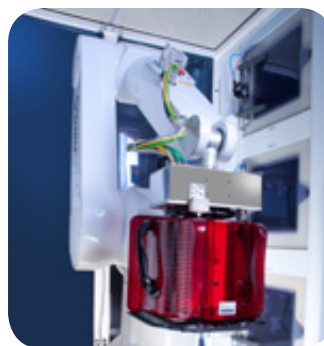
Sandia Science & Technology Park

Sandia National Laboratories, P.O. Box 5800, MS 1495, Albuquerque, NM 87185-1495
Jackie Kerby Moore, Executive Director, 505.845.8107, jskerby@sandia.gov

where technology works



**SANDIA SCIENCE &
TECHNOLOGY PARK**



**SANDIA SCIENCE & TECHNOLOGY PARK
DEVELOPMENT CORPORATION**

a nonprofit 501 (c)(3) charitable foundation



**New Mexico
Workforce Innovation in
Regional Economic Development**

Contract: WR-16380-07-60-A-35



**Sandia
National
Laboratories**

Sandia National Laboratories is a multi-program laboratory managed and operated by Sandia Corporation, a wholly owned subsidiary of Lockheed Martin Corporation, for the U.S. Department of Energy's National Nuclear Security Administration under contract DE-AC04-94AL85000. SAND No. 2010-XXXXP.