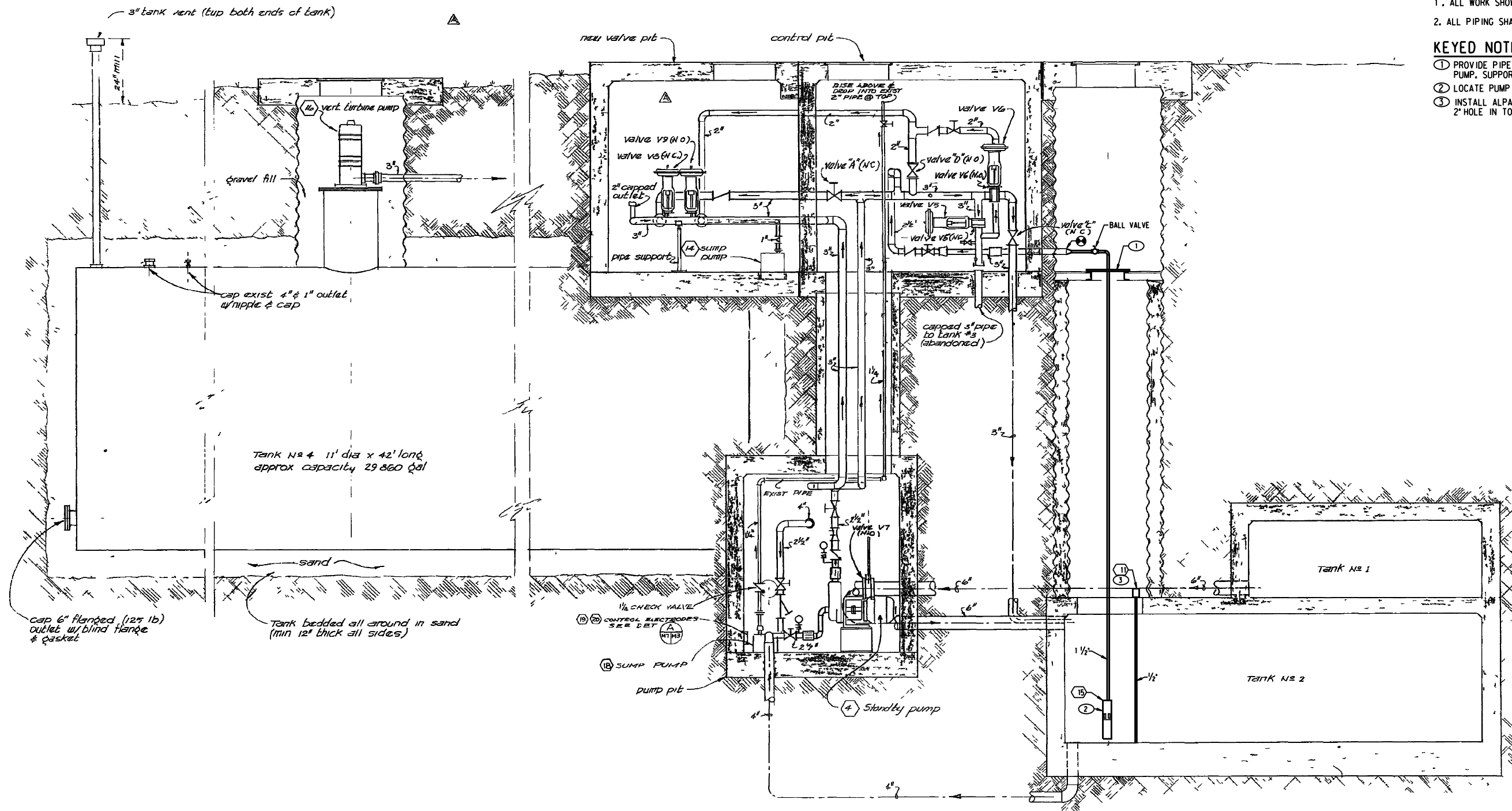


**GENERAL NOTES**

1. ALL WORK SHOWN IS IN THE SCOPE OF PHASE I.
2. ALL PIPING SHALL BE STEEL STR SAND2013-0379P

**KEYED NOTES**

- 1 PROVIDE PIPE SUPPORT CAPABLE OF SUPPORTING PIPING AND PUMP. SUPPORT SHALL INCLUDE VIBRATION ISOLATION.
- 2 LOCATE PUMP 4" ABOVE THE BOTTOM OF THE TANK.
- 3 INSTALL ALPASONIC LEVEL TRANSMITTER ON THE TANK. COORDRILL 2" HOLE IN TOP OF TANK FOR LEVEL TRANSMITTER.



**SECTION**  
SCALE 1/2"=1'-0"

45-3411	11/80	INSTALL NEW PUMPS (4) & (16)	FCB
364-80-175	7/80	INSTALL NEW PUMPS 4 & 18	CEC
53756	1/07	CLEANED FILE FOR VIEWING	DAA
BASELINE	4/09	ROLLUP PROJECT 53756	DAA
12/19/99	2/9/92	Remove pneumatic controls	EBM

EQUIPMENT SCHEDULE								
DESCRIPTION								
11	LEVEL TRANSMITTER: TWO-WIRE ALPHA SONIC, 0.3 TO 1 0' RANGE, +/- 1% OF SPAN ACCURACY, 4-20 MA OUTPUT TEMPERATURE COMPENSATING, 1/2" WAVE GUIDE, POLYPROPYLENE ENCLOSURE. UNIT SHALL BE PROVIDED WITH LCD DISPLAY OF LEVEL IN NEMA 4X ENCLOSURE. FLOWLINE MODEL LA12-1 001 LEVEL TRANSMITTER AND LI21-1 001 DISPLAY.							
15	SUBMERSIBLE PUMPS: 300 SERIES STAINLESS STEEL CONSTRUCTION. CHECK VALVE AND SEAT. NBR SEALS. MULTI-STAGE PUMPING. GRUNDFOS OR EQUIVALENT.							
	SYMBOL	GPM	HEAD. FT.	MOTOR HP	POWER	GRUNDFOS MODEL NO.	OPERATING WT. LBS.	SERVICE
	15	25	50	.50	208/3/60	255	26	TANK #2
	16	25	50	.50	208/3/60	255	26	TANK #4

NO.	REV	DATE	DESCRIPTION	DWN	CKD	APP
53786		11/02	INSTALL NEW PUMP 15	CAW	SDB	
45-3411		7/80	INSTALL NEW PUMPS 4 & 18	CEC	CRM	
364-80-175		1/07	CLEANED FILE FOR VIEWING	DAA		
53756		4/09	ROLLUP PROJECT 53756	DAA		

U.S. DEPARTMENT OF ENERGY  
ALBUQUERQUE, NEW MEXICO

**SANDIA NATIONAL LABORATORIES**

SECTION - PROCESS WASTE SYSTEM

Reactor Facility

DISCP: D SUB-DISCP: P 6580 DATE 8/17/68

P.O. PROJECT NO. DRAWN BY MILLS CHECKED BY TE ENL ENGR

Property of Sandia National Laboratories Facilities Management and Operation Center (FMOC). No duplication or alteration allowed without the expressed permission and authorization of FMOC.