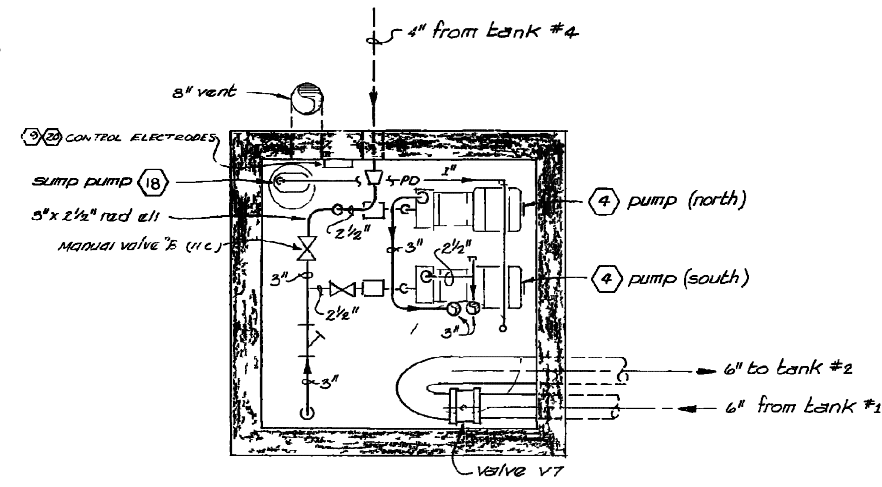
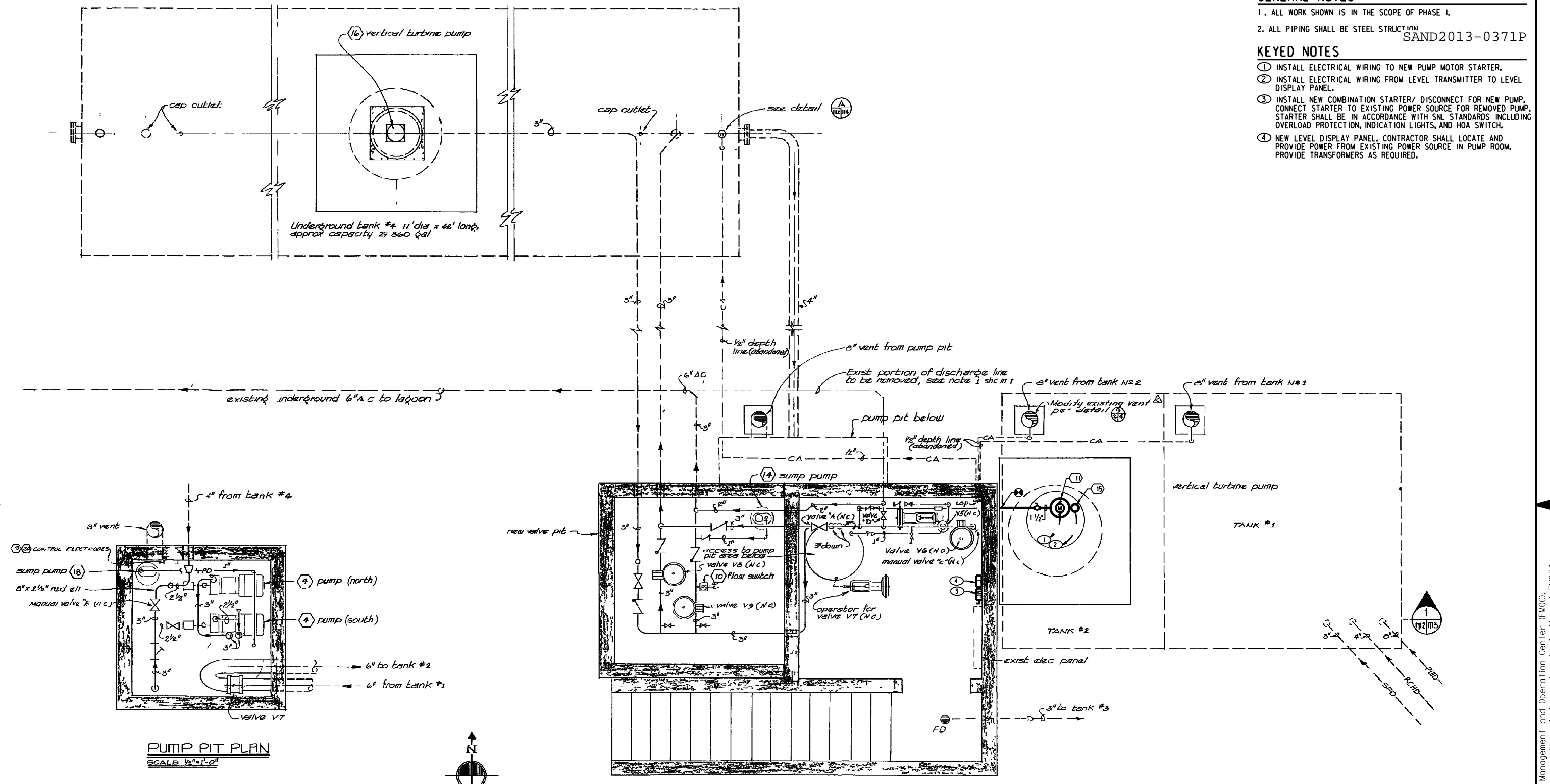


GENERAL NOTES

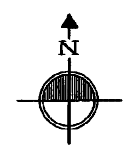
1. ALL WORK SHOWN IS IN THE SCOPE OF PHASE I.
2. ALL PIPING SHALL BE STEEL STRUCTURE SAND2013-0371P

KEYED NOTES

1. INSTALL ELECTRICAL WIRING TO NEW PUMP MOTOR STARTER.
2. INSTALL ELECTRICAL WIRING FROM LEVEL TRANSMITTER TO LEVEL DISPLAY PANEL.
3. INSTALL NEW COMBINATION STARTER/ DISCONNECT FOR NEW PUMP. CONNECT STARTER TO EXISTING POWER SOURCE FOR REMOVED PUMP. STARTER SHALL BE IN ACCORDANCE WITH SNL STANDARDS INCLUDING OVERLOAD PROTECTION, INDICATION LIGHTS, AND HOA SWITCH.
4. NEW LEVEL DISPLAY PANEL. CONTRACTOR SHALL LOCATE AND PROVIDE POWER FROM EXISTING POWER SOURCE IN PUMP ROOM. PROVIDE TRANSFORMERS AS REQUIRED.



PUMP PIT PLAN
SCALE 1/2"=1'-0"



PLAN
SCALE 1/2"=1'-0"

45-3411	7/1/80	INSTALL NEW PUMPS (4) & (18)	CC	11/1/80
45-3411	7/1/80	REMOVE PUMPS (4) & (18)	CC	11/1/80
45-3411	2/1/83	Remove pneumatic control system	CC	

56756	11/82	INSTALL NEW PUMP 15	CAW	SOB		
364-80-175	7/80	INSTALL NEW PUMPS 4 & 18	CEC	CFM		
	1/07	CLEANED FILE FOR VIEWING	DAA			
53756	4/09	ROLLUP PROJECT 53756	DAA			
BASELINE						
P.O.	REV	DATE	DESCRIPTION	DWN	CKD	APP

U.S. DEPARTMENT OF ENERGY
SANDIA NATIONAL LABORATORIES

PLAN - PROCESS WASTE SYSTEM

Reactor Facility

DISCP: 0	SUB-DISCP: P	6580	DATE	8/19/68
FILENAME: 090326M.02	SIZE	DRAWING NO	SEQ.	
FILENAME: DP10016580.DGN	D+	DP10016580.DGN		

Property of Sandia National Laboratories Facilities Management and Operation Center (FMOC). No duplication or alteration allowed without the expressed permission and authorization of FMOC.